

# V&V Reference Report

## L2 ASCDS Version : 8.5.1.1

Observation 6200 - L2 Version 4  
Chandra X-Ray Center

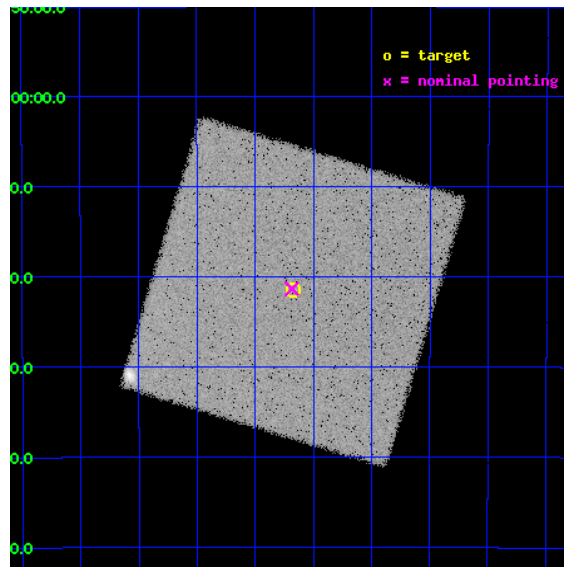
L2 Processing Date : Dec 24 2012

## Contents

<b>1</b>	<b>Front</b>	<b>2</b>
<b>2</b>	<b>OBI</b>	<b>3</b>
2.1	OBI . . . . .	3
2.1.1	Images . . . . .	3
2.1.2	Parameters . . . . .	4
2.1.3	Events . . . . .	4
2.2	Compared Parameters . . . . .	5
2.3	Aspect . . . . .	6
2.4	Star Slots . . . . .	9
2.4.1	Slot 3 . . . . .	9
2.4.2	Slot 4 . . . . .	10
2.4.3	Slot 5 . . . . .	11
2.4.4	Slot 6 . . . . .	12
2.4.5	Slot 7 . . . . .	13
2.5	FID Slots . . . . .	14
2.5.1	Slot 0 . . . . .	14
2.5.2	Slot 1 . . . . .	15
2.5.3	Slot 2 . . . . .	16
<b>A</b>	<b>Summary</b>	<b>17</b>
A.1	Status . . . . .	17
A.2	Comments . . . . .	17

# 1 Front

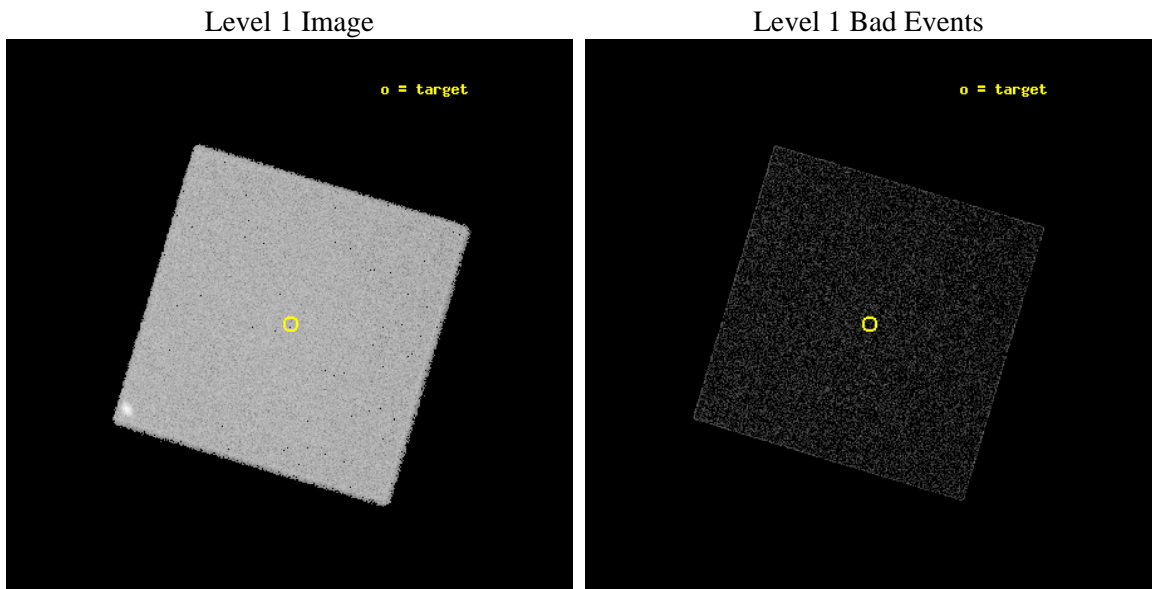
seq_num	400460	Sequence number
obs_id	6200	Observation id
title	Monitoring observations of the Galactic Center region	Proposal tit
observer	Dr. Rudy Wijnands	Principal investigator
object	GC-10	Source name
ra_targ	266.1675	Observer's specified target RA [deg]
dec_targ	-29.358611	Observer's specified target Dec [deg]
ra_nom	266.17124276083	Nominal RA [deg]
dec_nom	-29.356144378479	Nominal Dec [deg]
roll_nom	61.759564757815	Nominal Roll [deg]
revision	4	Processing version of data
ontime	5183.681486547	[s]
livetime	5147.1424672629	Ontime multiplied by DTCOR
l2events	196470	Number of level 2 events



## 2 OBI

### 2.1 OBI

#### 2.1.1 Images



### 2.1.2 Parameters

obi_num	0	Obi number	sched_exp_time	5000.000000	[s] Scheduled observation exposure time
ascdsver	8.5.1.1	Processing system revision	ontime	5183.681486547	[s]
caldsver	4.5.5	&#160	l1events	385980	Number of level 1 events
date	2012-12-24T12:03:23	Date and time of file creation			
revision	4	Processing version of data			

### 2.1.3 Events

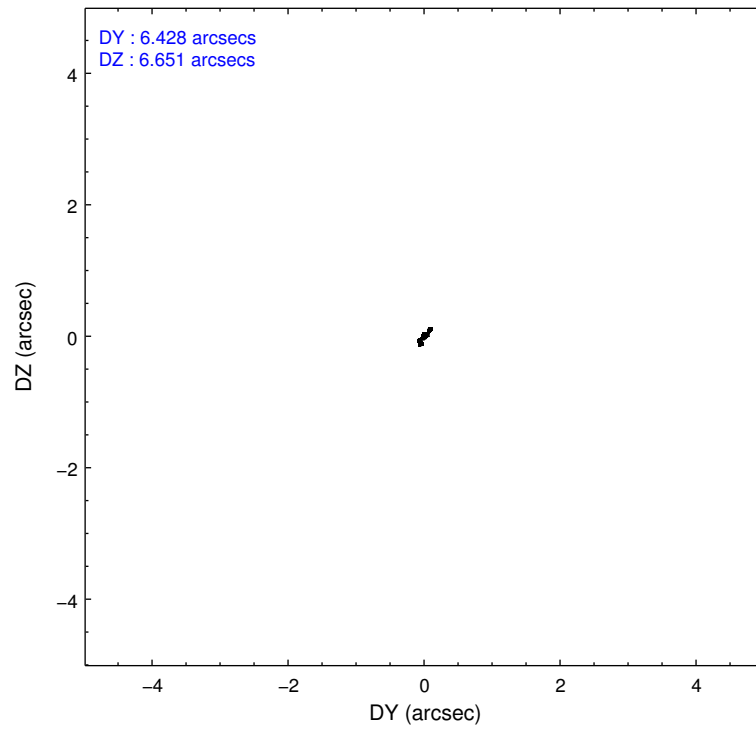
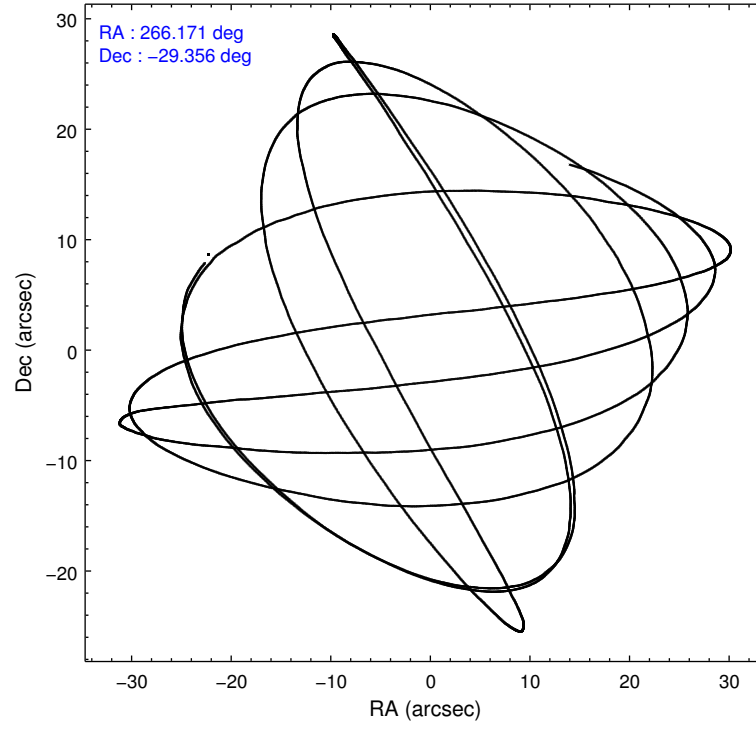
#### Level 1 Events

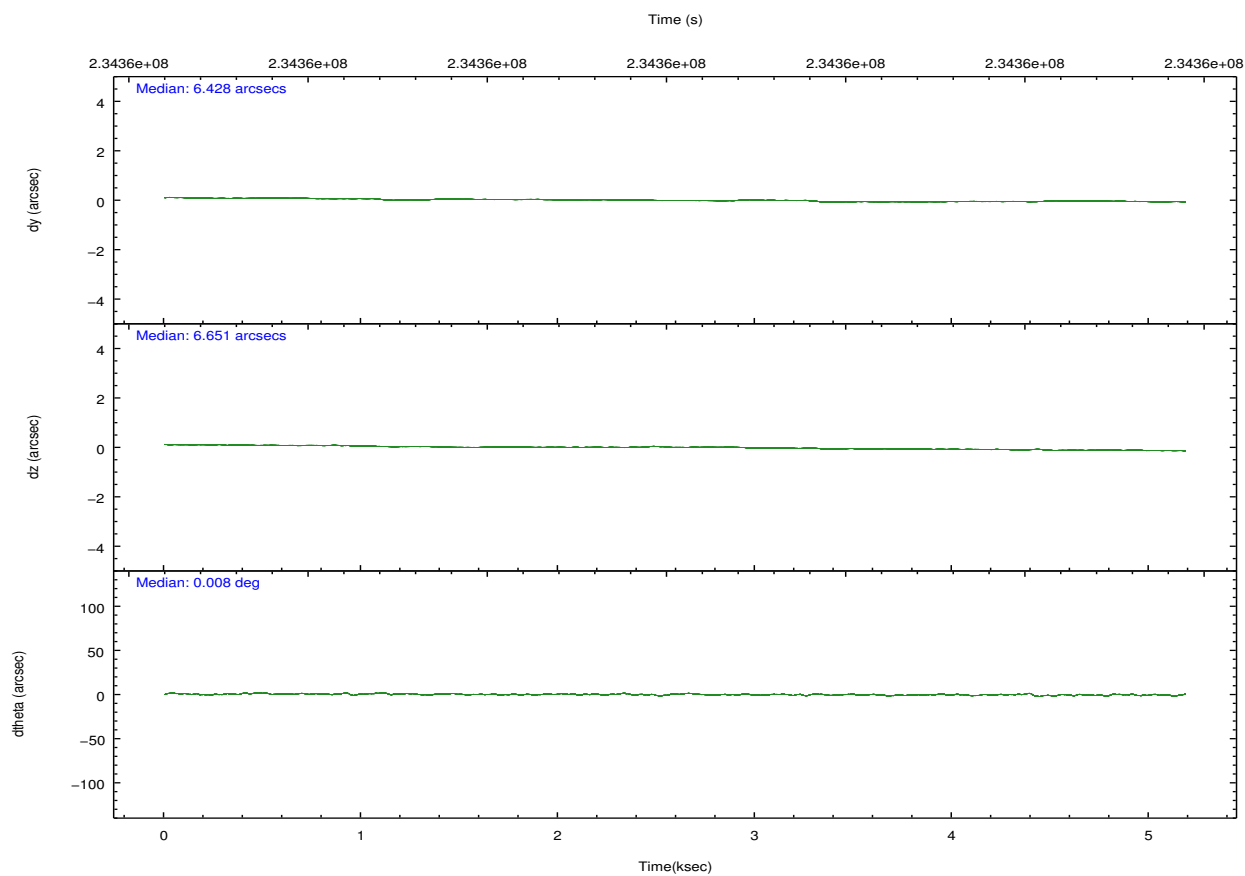
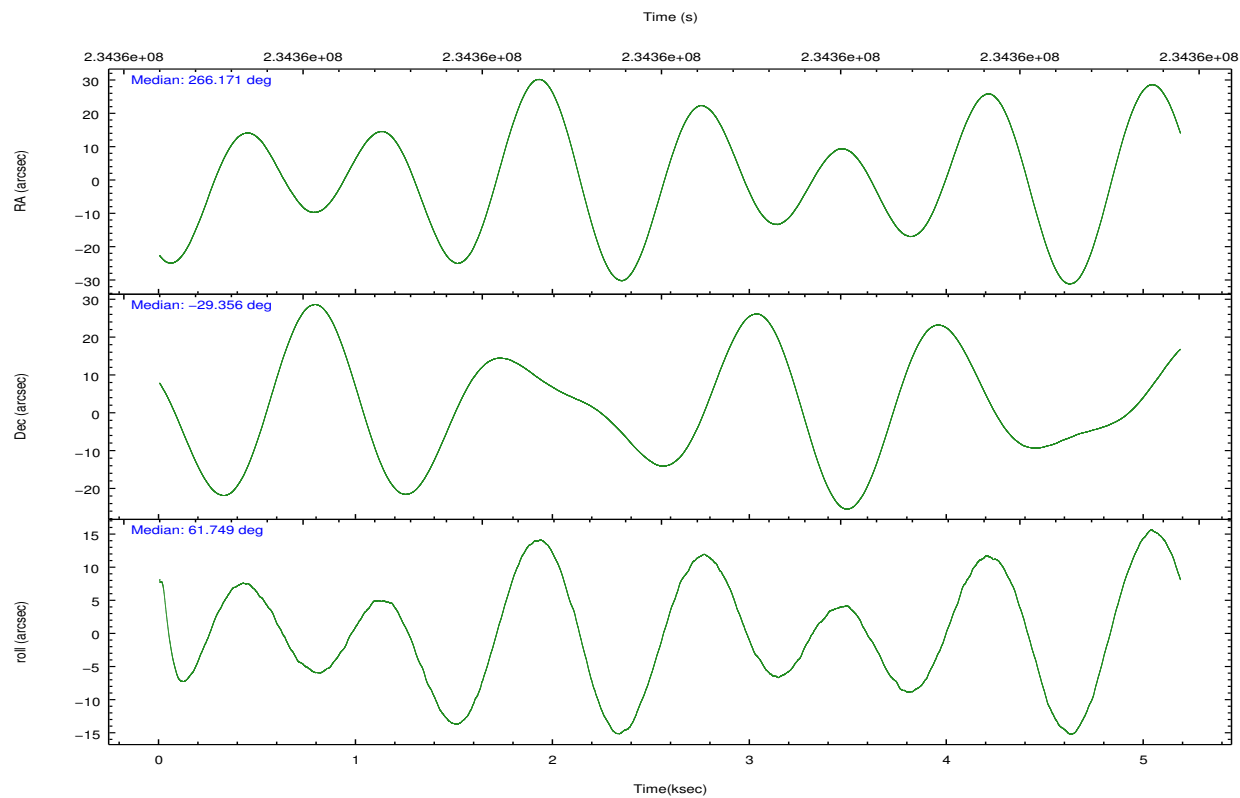
	<b>segment 0</b>
level 1 events	385980
rejected events	94361
rejected %	24%

## 2.2 Compared Parameters

Parameter	Planned	Actual	Parameter	Planned	Actual
Instrument	HRC	HRC	Obspar format version number	7	7
Detector	HRC-I	HRC-I	Obspar file type	PREDICTED	ACTUAL
Grating	NONE	NONE	Obspar update status	NONE	UPDATED
Data mode	OBSERVING	OBSERVING			
Observation mode	POINTING	POINTING			
[deg] Pointing RA	266.172883	266.1712427608322			
[deg] Pointing Dec	-29.383052	-29.35614437847901			
[deg] Pointing Roll	61.855853	61.75956475781469			
[mm] SIM focus pos	-1.040293	-1.038866356238299			
[mm] SIM defocus	0	0.001426264420575141			
[mm] SIM translation stage pos	126.985494	126.9829799899862			
[mm] SIM translation stage offset	0	0.002508901615314585			
[s] Observation start time (MET)	234357645.184000	234357265.80874			
Observation start date	2005-06-05T11:19:41	2005-06-05T11:14:25			
[s] Observation end time (MET)	234362645.184000	234364135.87155			
Observation end date	2005-06-05T12:43:01	2005-06-05T13:08:55			

## 2.3 Aspect



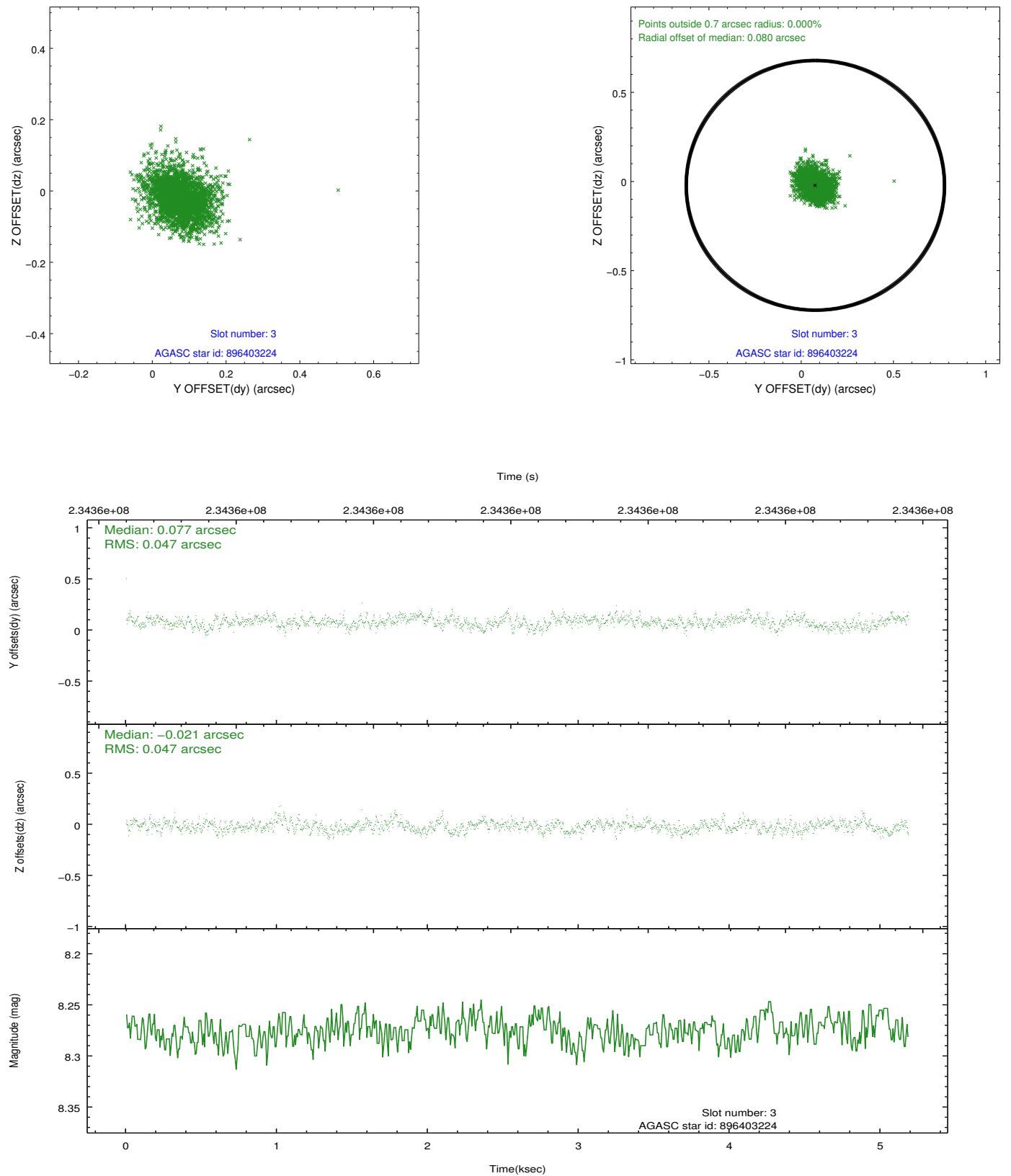


### Slot Statistics

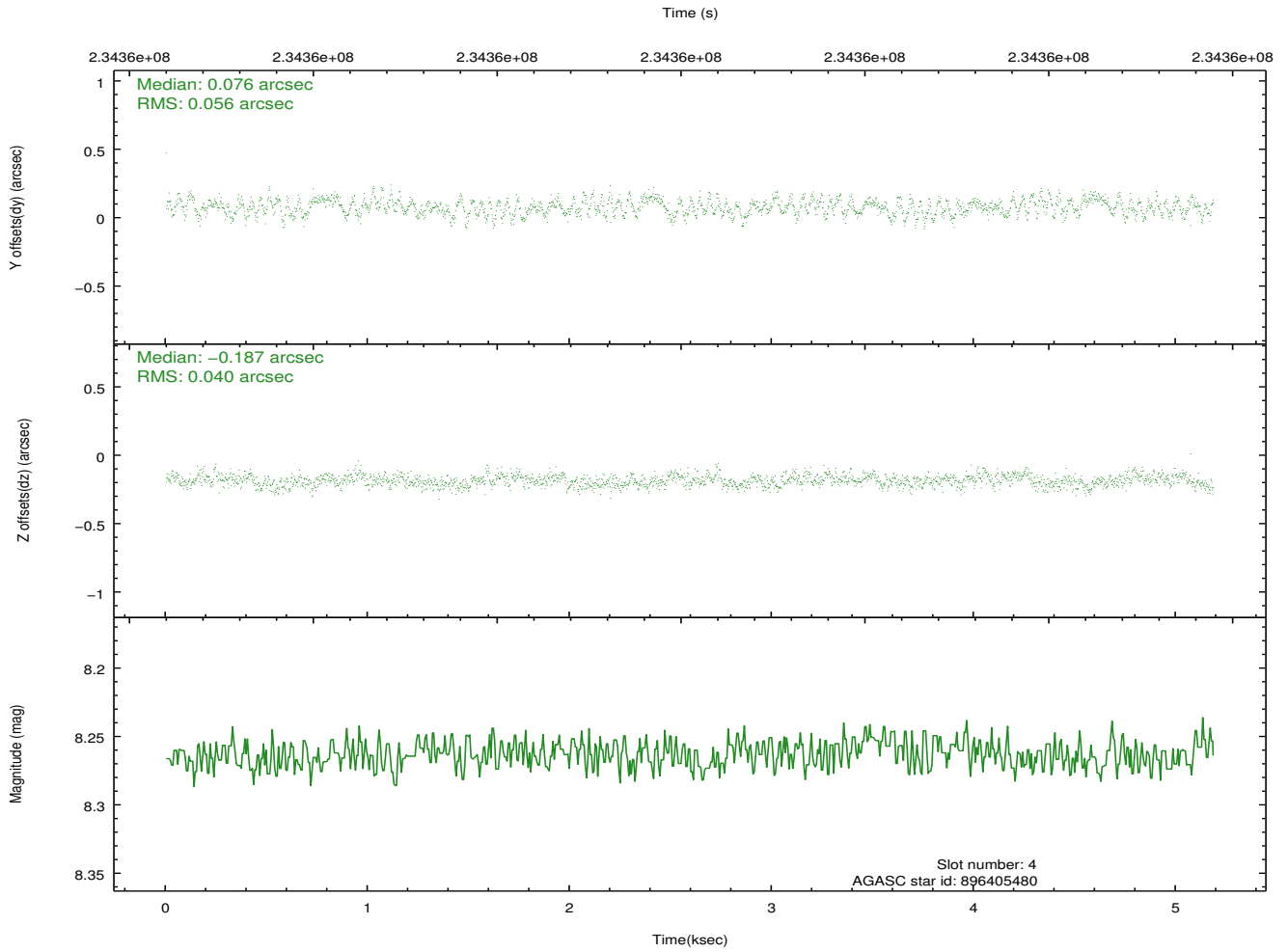
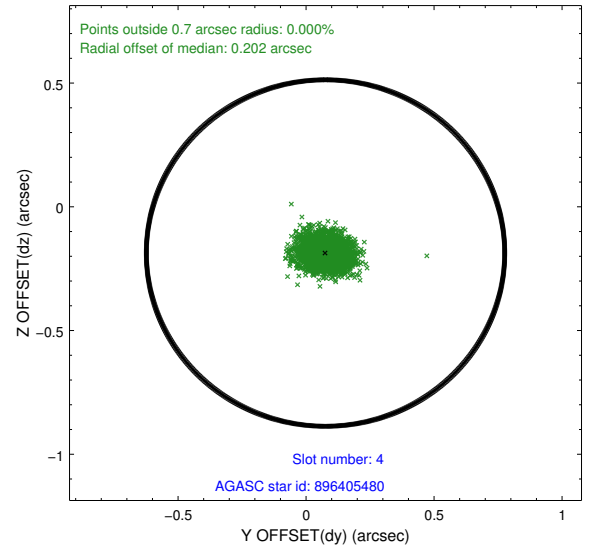
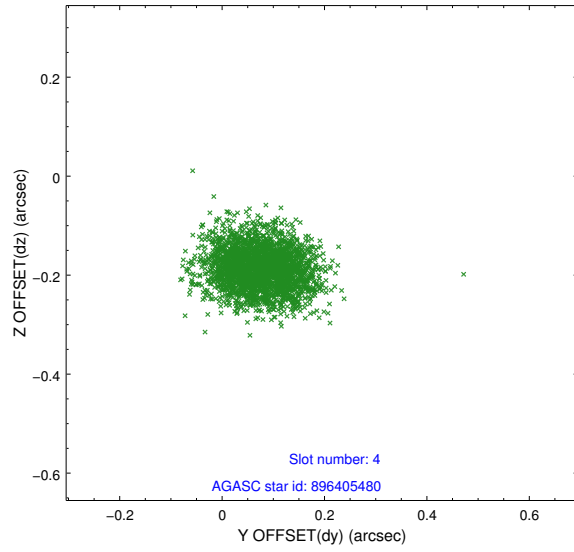
slot	status	id	mag	n_pts	med_dy	med_dz	dr1	dr2	ra	dec	mean_y	mean_z
0	FID	HRC-I-1	6.99	1265	0.005	-0.015	0.013	0.029	0.000000	0.000000	-761.98	-1294.50
1	FID	HRC-I-2	7.04	1265	0.105	-0.070	0.010	0.017	0.000000	0.000000	850.15	-1297.13
2	FID	HRC-I-3	7.08	1264	0.008	-0.006	0.009	0.018	0.000000	0.000000	-1189.82	1009.04
3	GUIDE	896403224	8.28	2530	0.077	-0.021	0.069	0.116	265.612825	-29.438915	-1008.88	1451.73
4	GUIDE	896405480	8.26	2530	0.076	-0.187	0.073	0.116	265.220460	-29.599691	-2104.79	2255.81
5	GUIDE	896541168	8.15	2530	0.024	0.018	0.064	0.104	266.319970	-29.850801	-1268.44	-1198.07
6	GUIDE	896541360	7.72	2530	-0.076	0.083	0.053	0.089	266.684478	-29.453744	529.36	-1535.47
7	GUIDE	896533888	7.03	2529	-0.102	0.110	0.054	0.084	266.666434	-29.392757	697.59	-1382.82

## 2.4 Star Slots

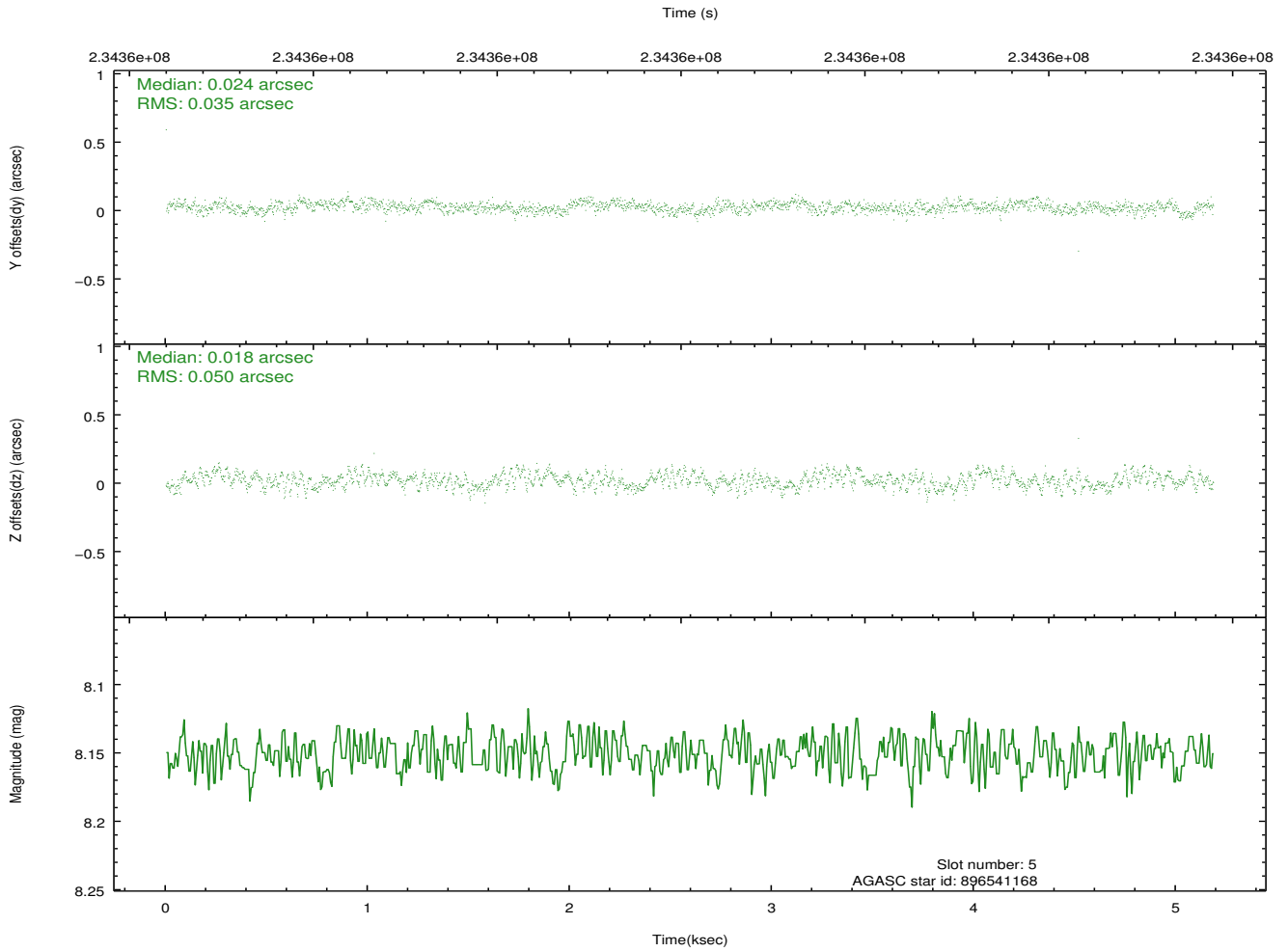
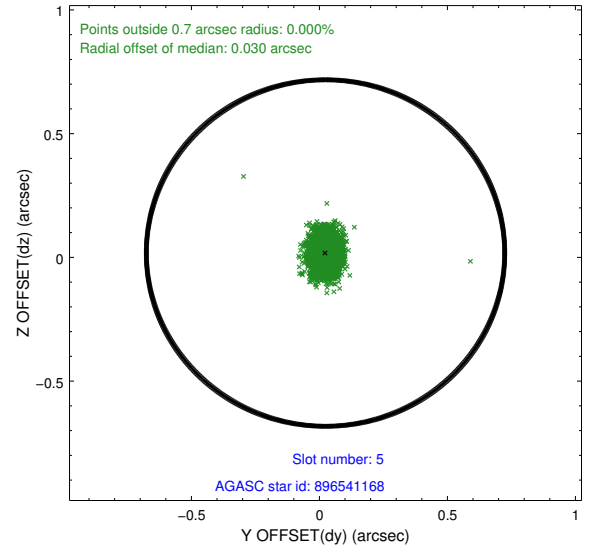
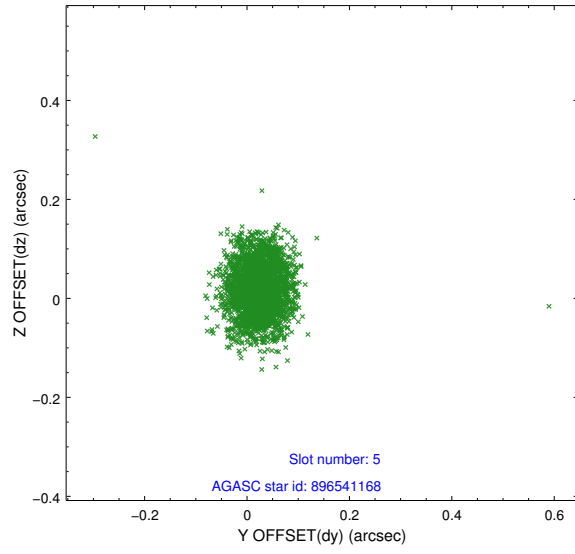
### 2.4.1 Slot 3



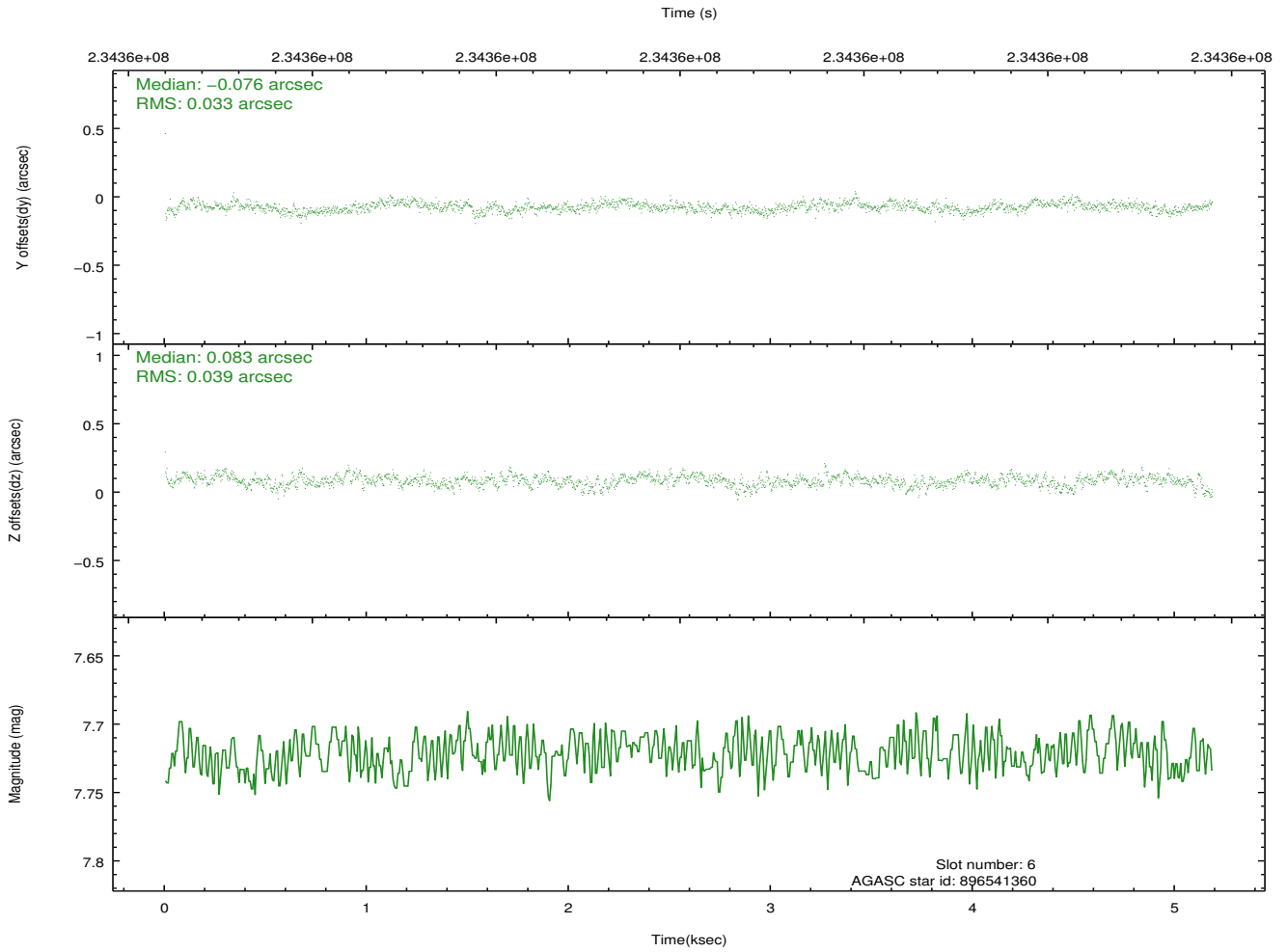
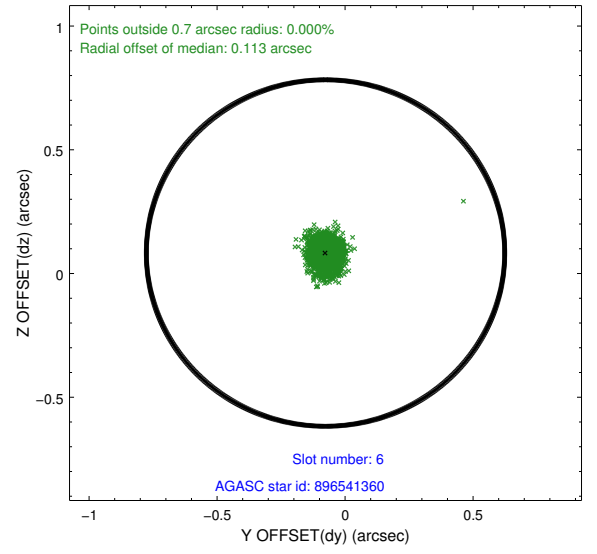
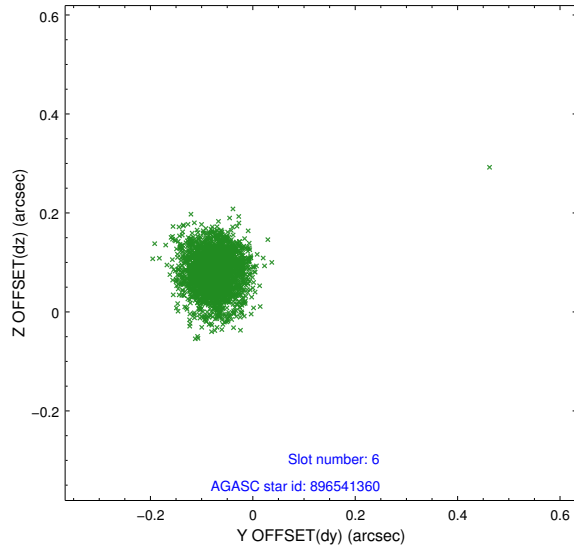
## 2.4.2 Slot 4



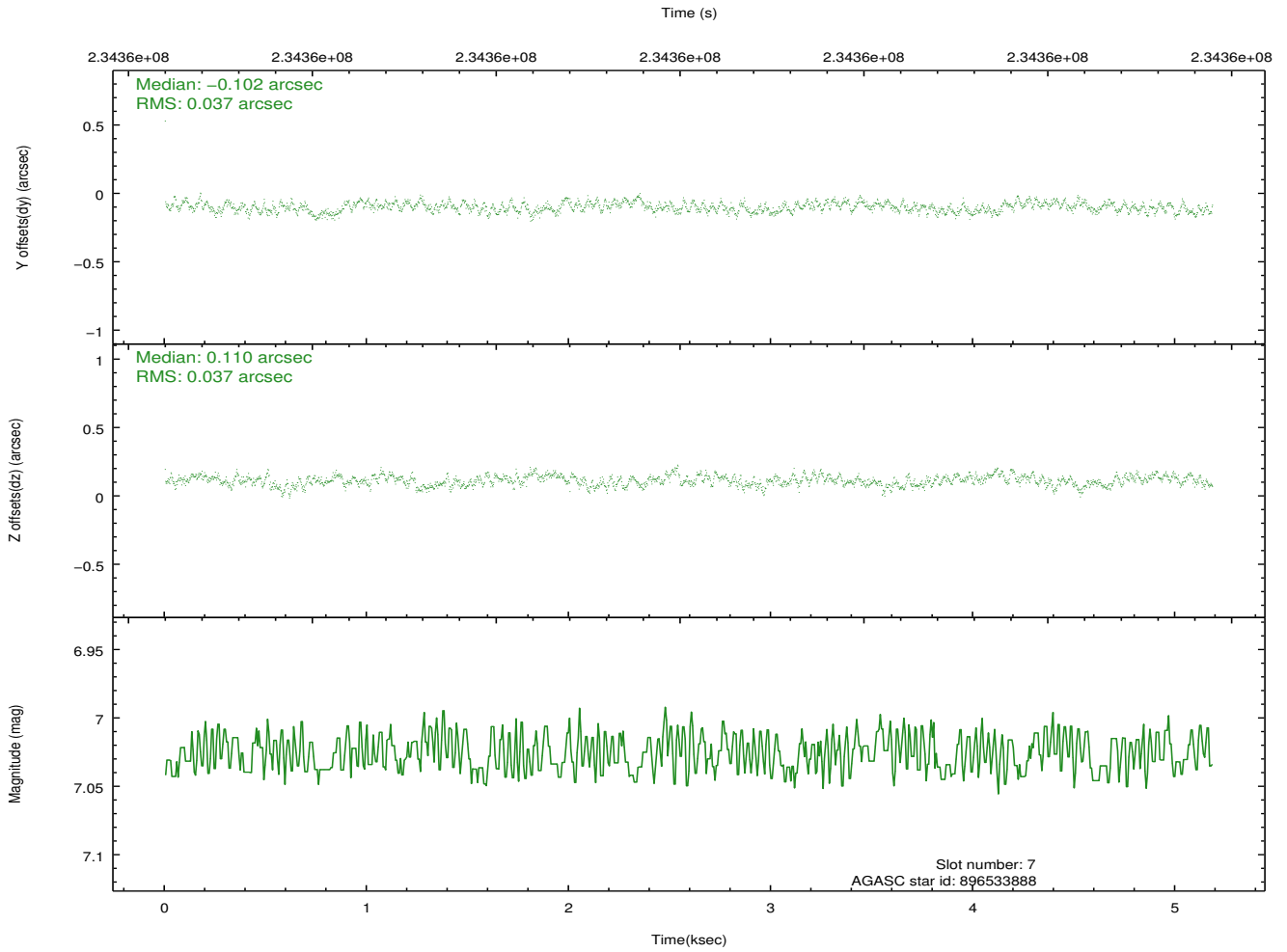
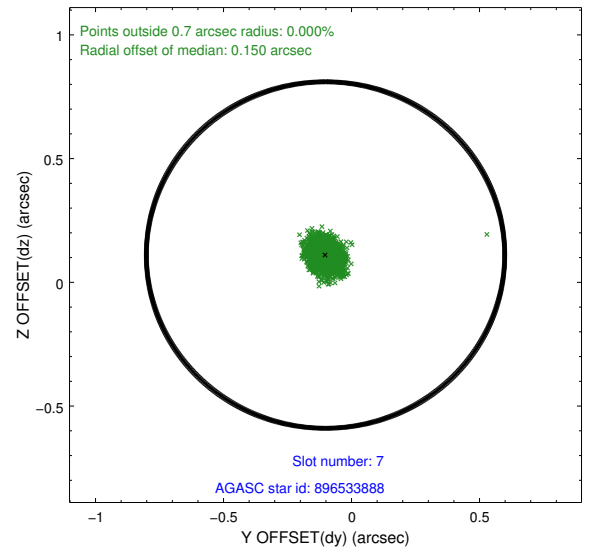
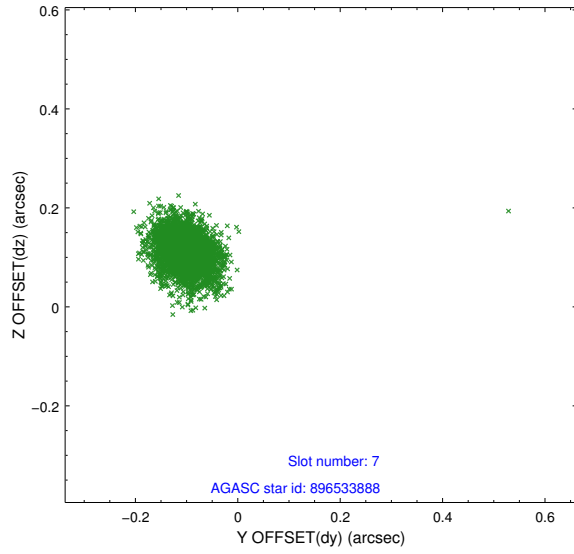
### 2.4.3 Slot 5



## 2.4.4 Slot 6

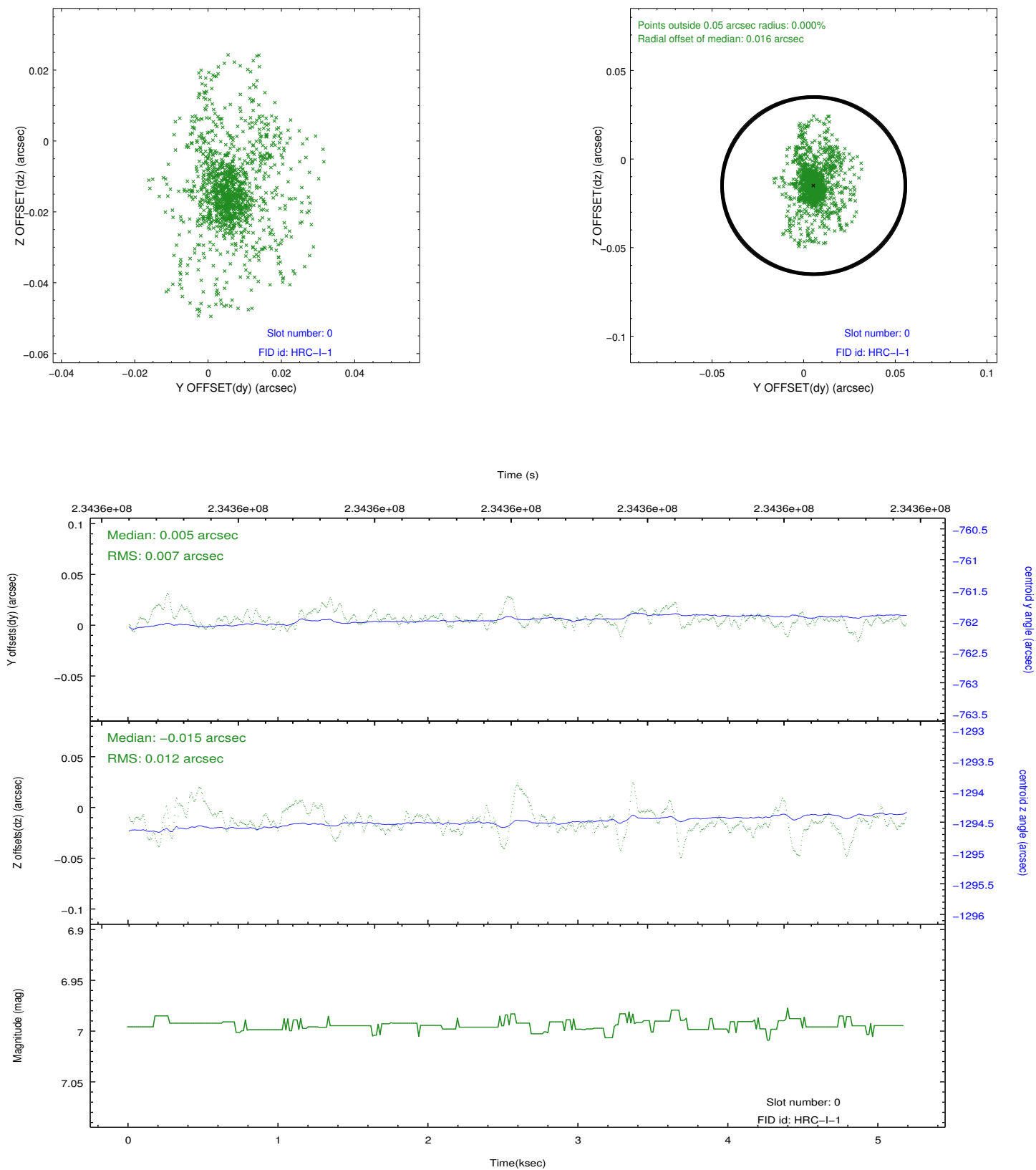


## 2.4.5 Slot 7

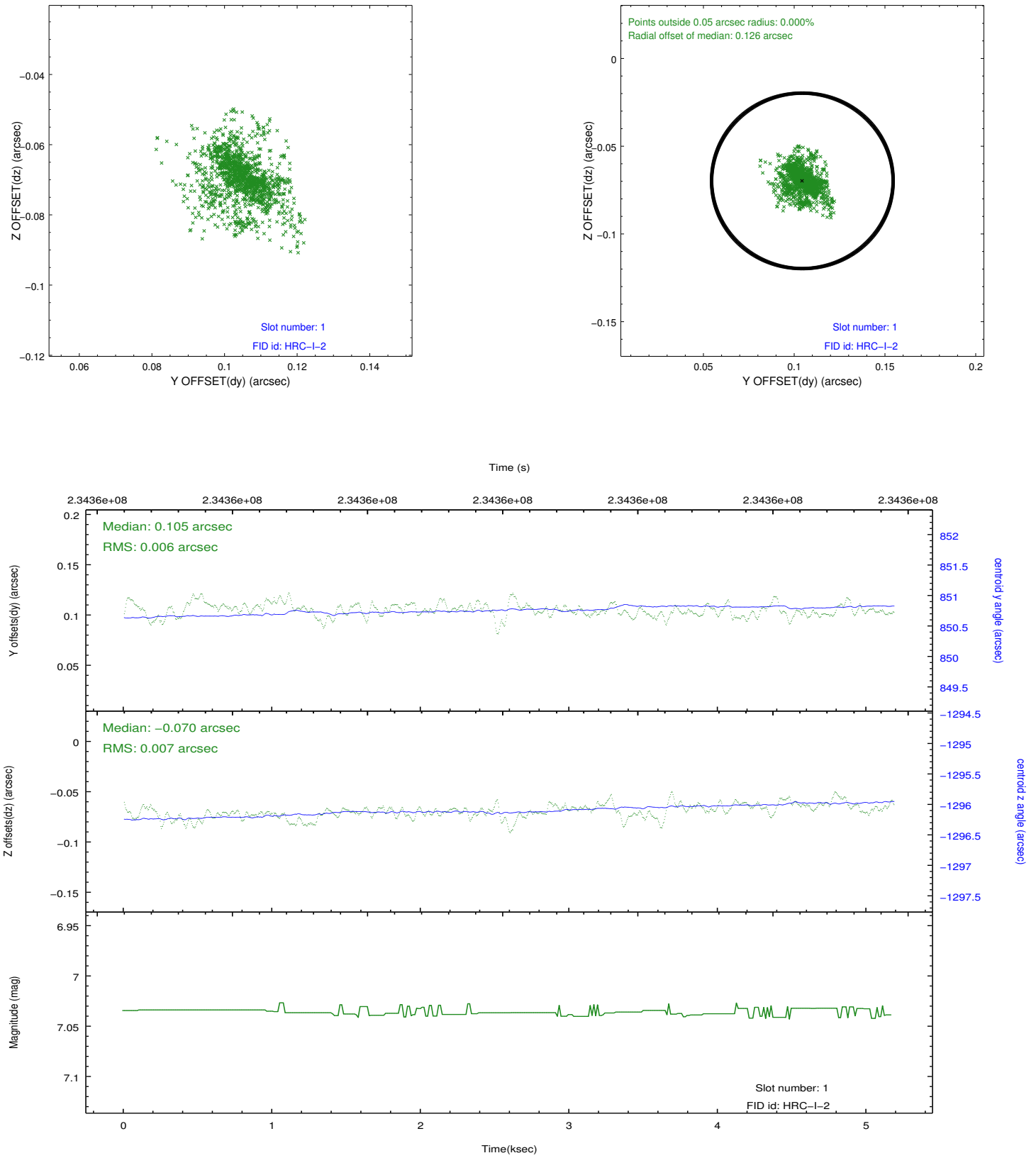


## 2.5 FID Slots

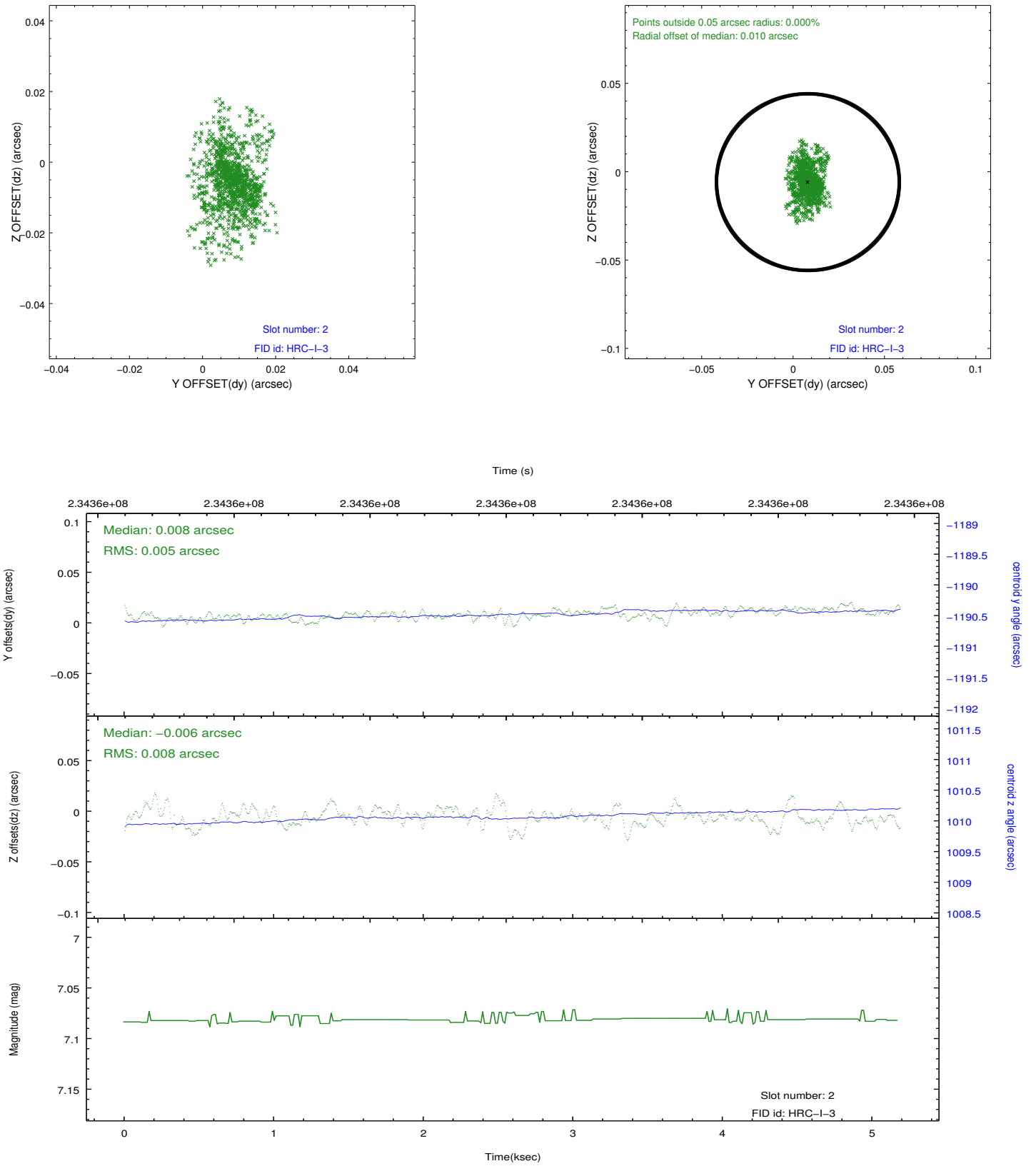
### 2.5.1 Slot 0



## 2.5.2 Slot 1



### 2.5.3 Slot 2



## A Summary

### A.1 Status

V&V Scientist	Jen Lauer
V&V Date (YYYY-MM-DD)	2013.01.16
V&V Edition	1
V&V Disposition and Status	OK
V&V Charge Time	5.183425

### A.2 Comments

Joint Proposal: CX0-XMM