

V&V Reference Report

L2 ASCDS Version : 7.6.7.1

Observation 6196 - L2 Version 3
Chandra X-Ray Center

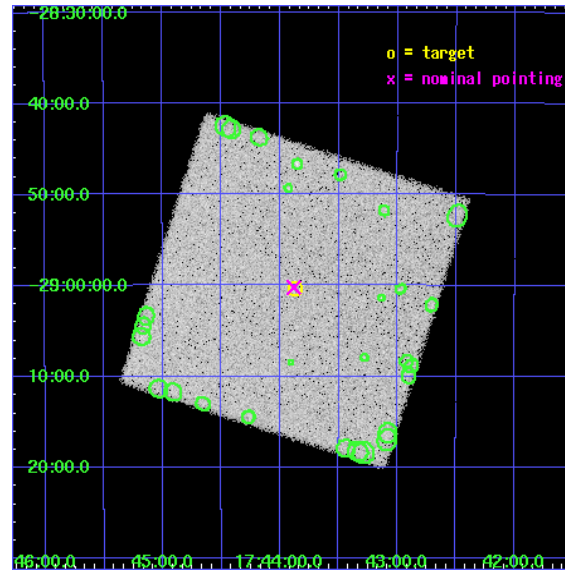
L2 Processing Date : Nov 24 2007

Contents

1	Front	2
2	OBI	3
2.1	OBI	3
2.1.1	Images	3
2.1.2	Parameters	4
2.1.3	Events	4
2.2	Compared Parameters	5
2.3	Aspect	6
2.4	Star Slots	9
2.4.1	Slot 3	9
2.4.2	Slot 4	10
2.4.3	Slot 5	11
2.4.4	Slot 6	12
2.4.5	Slot 7	13
2.5	FID Slots	14
2.5.1	Slot 0	14
2.5.2	Slot 1	15
2.5.3	Slot 2	16
3	Point Sources	17
A	Summary	18
A.1	Status	18
A.2	Comments	18

1 Front

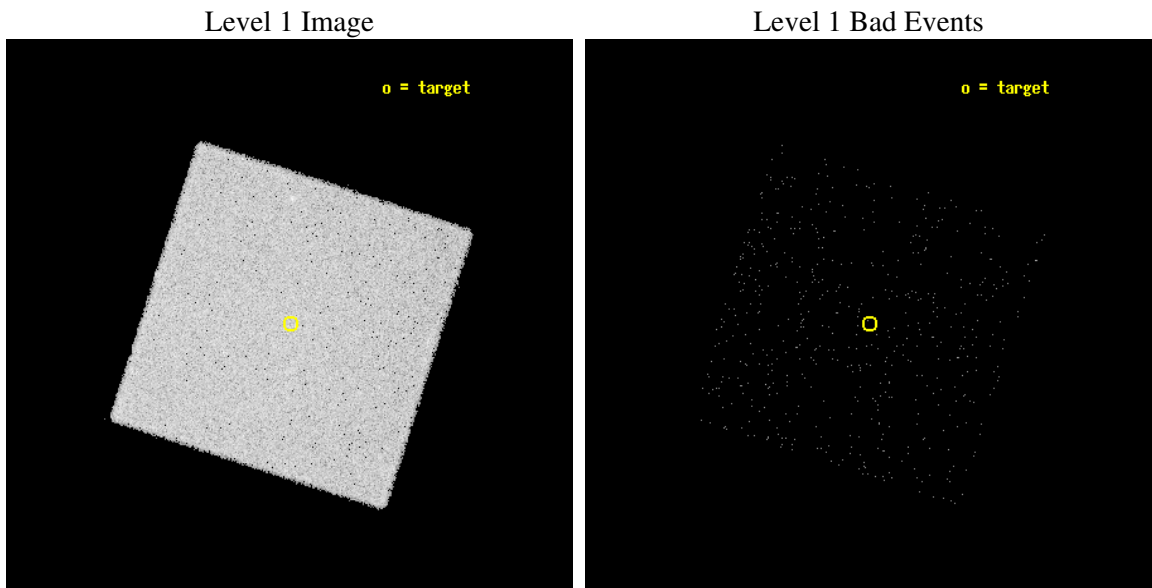
seq_num	400456
obs_id	6196
title	Monitoring observations of the Galactic Center region
observer	Dr. Rudy Wijnands
object	GC-8
ra_targ	265.967083
dec_targ	-29.006389
ra_nom	265.97037971049
dec_nom	-29.003844321317
roll_nom	62.886170548523
revision	3
ontime	5181.6314864755
livetime	5145.206305099
l2events	194412



2 OBI

2.1 OBI

2.1.1 Images



2.1.2 Parameters

obi_num	0
ascdsver	7.6.11.2
caldbver	3.4.1
date	2007-11-24T14:41:20
revision	3

sched_exp_time	5000.000000
ontime	5181.6314864755
l1events	310558

2.1.3 Events

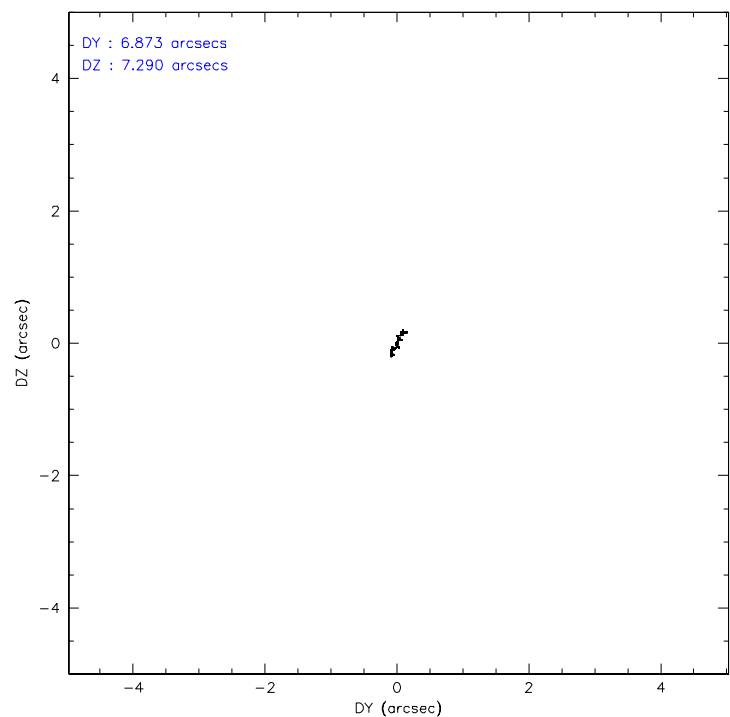
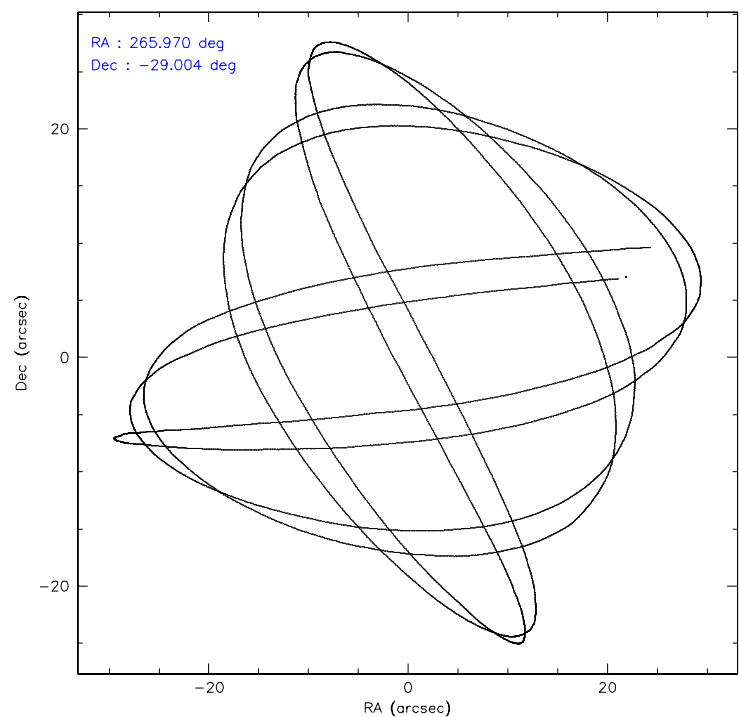
Level 1 Events

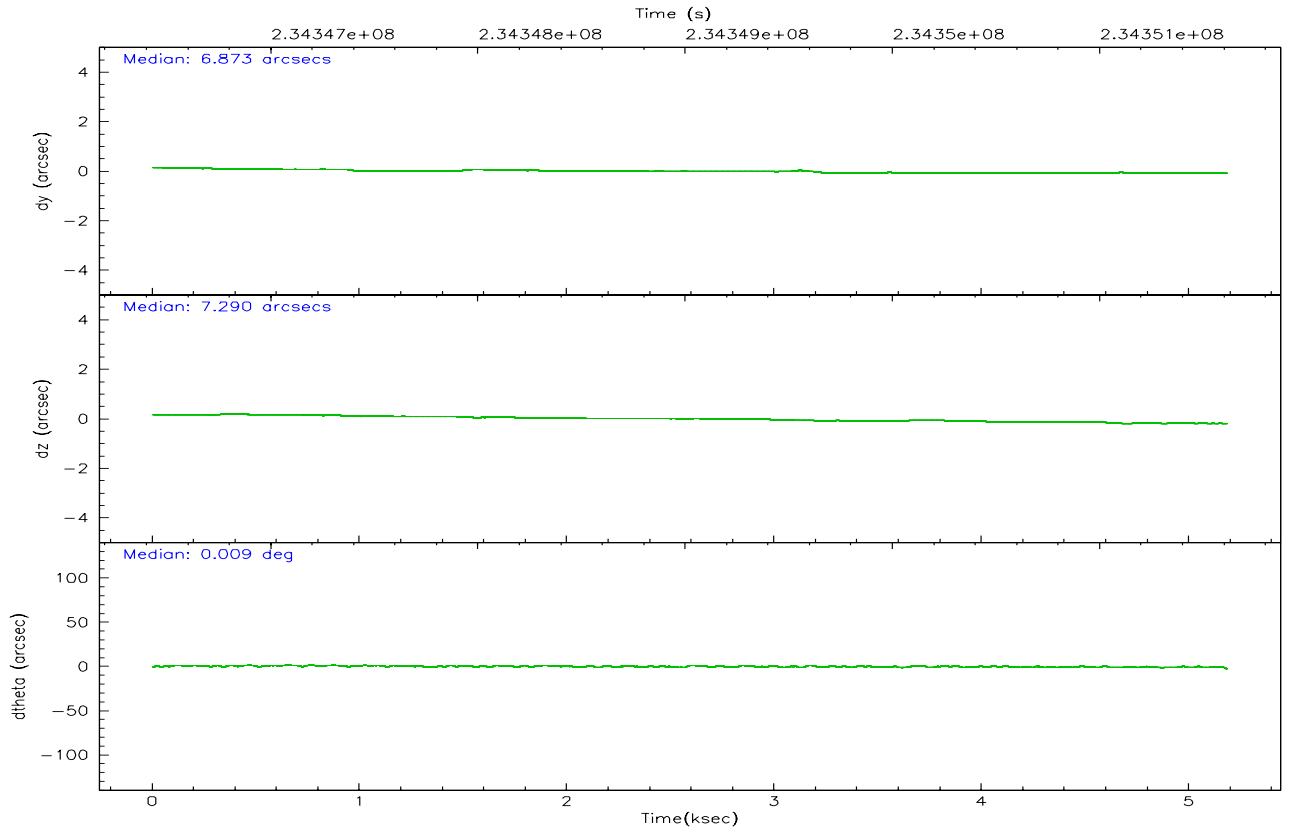
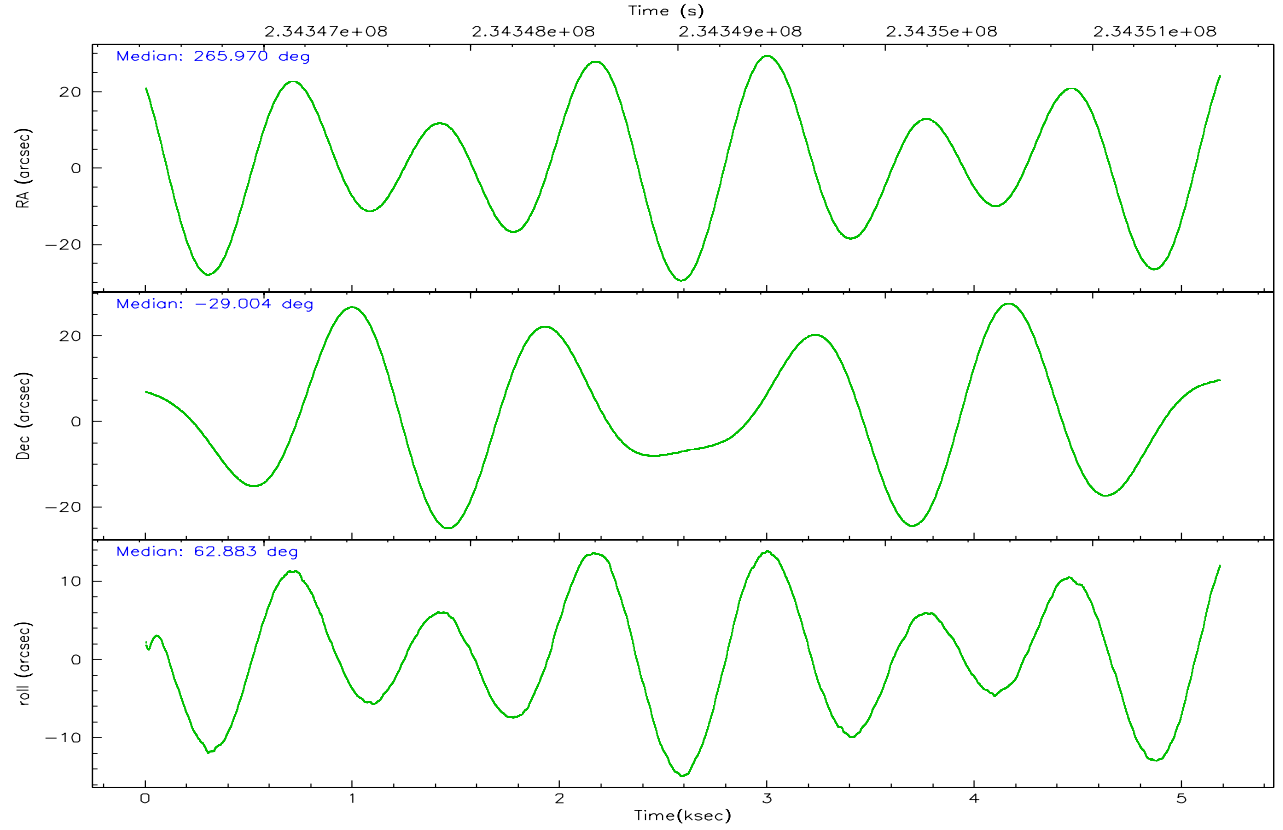
	segment 0
level 1 events	310558
rejected events	20622
rejected %	6%

2.2 Compared Parameters

Parameter	Planned	Actual	Parameter	Planned	Actual
Instrument	HRC	HRC	Obspar format version number	6	6
Detector	HRC-I	HRC-I	Obspar file type	PREDICTED	ACTUAL
Grating	NONE	NONE	Obspar update status	NONE	UPDATED
Data mode	OBSERVING	OBSERVING			
Observation mode	POINTING	POINTING			
Pointing RA	265.973004	265.9703797104889			
Pointing Dec	-29.030732	-29.00384432131714			
Pointing Roll	62.982927	62.88617054852306			
SIM focus pos (mm)	-1.040293	-1.038866356238299			
SIM defocus (mm)	0	0.001426264420575141			
SIM translation stage pos (mm)	126.985494	126.9829799899862			
SIM translation stage offset (mm)	0	0.002508901615314585			
Observation start time	234346618.184000	234346204.52073			
Observation start date	2005-06-05T08:15:54	2005-06-05T08:10:04			
Observation end time	234351618.184000	234351752.33349			
Observation end date	2005-06-05T09:39:14	2005-06-05T09:42:32			

2.3 Aspect



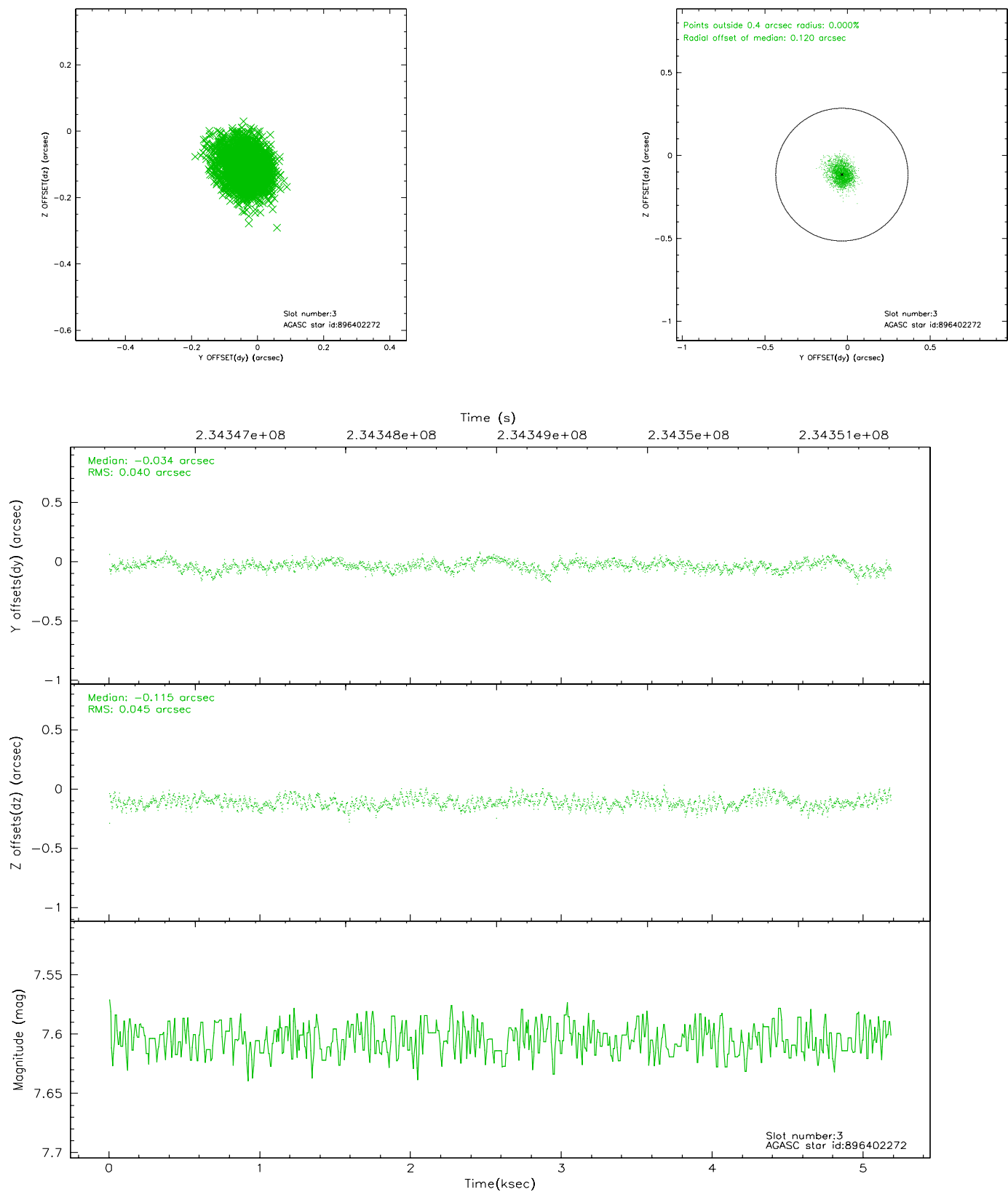


Slot Statistics

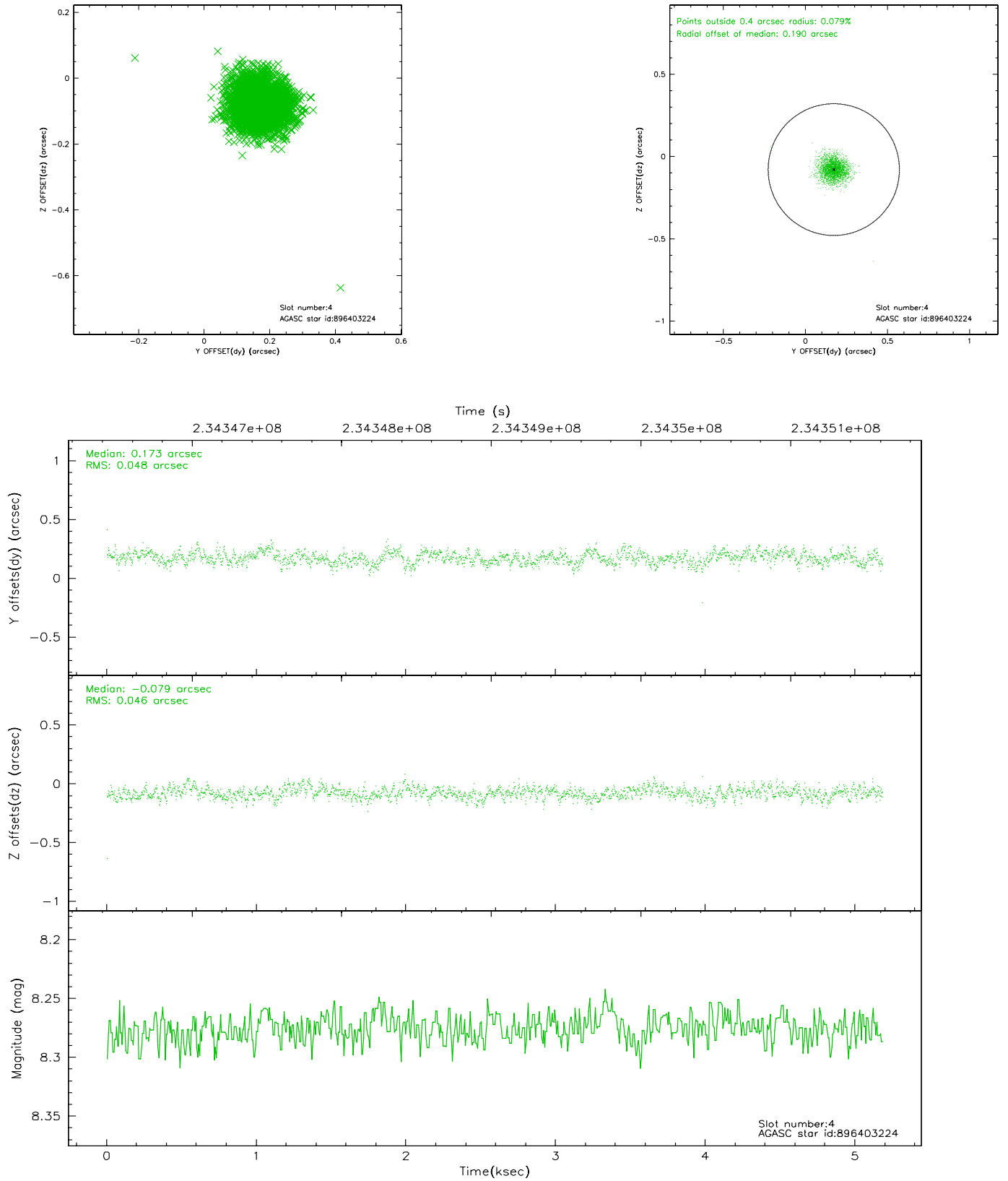
slot	status	id	mag	n_pts	med_dy	med_dz	dr1	dr2	ra	dec	mean_y	mean_z
0	FID	HRC-I-1	7.00	1264	0.014	0.021	0.009	0.014	0.000000	0.000000	-762.44	-1295.12
1	FID	HRC-I-2	7.03	1264	0.109	-0.091	0.009	0.016	0.000000	0.000000	849.68	-1297.83
2	FID	HRC-I-3	7.08	1264	-0.005	-0.018	0.008	0.012	0.000000	0.000000	-1190.26	1008.39
3	GUIDE	896402272	7.60	2529	-0.034	-0.115	0.063	0.106	265.637294	-28.313189	1817.50	2119.91
4	GUIDE	896403224	8.28	2529	0.173	-0.079	0.069	0.113	265.612825	-29.438915	-1821.81	337.51
5	GUIDE	896404568	7.85	2529	-0.096	-0.121	0.068	0.105	265.687293	-28.431080	1511.43	1785.32
6	GUIDE	896537176	8.04	2529	-0.040	0.187	0.061	0.098	266.498272	-28.678259	1882.39	-903.00
7	GUIDE	896541168	8.15	2528	-0.000	0.123	0.072	0.115	266.319970	-29.850801	-2137.67	-2308.13

2.4 Star Slots

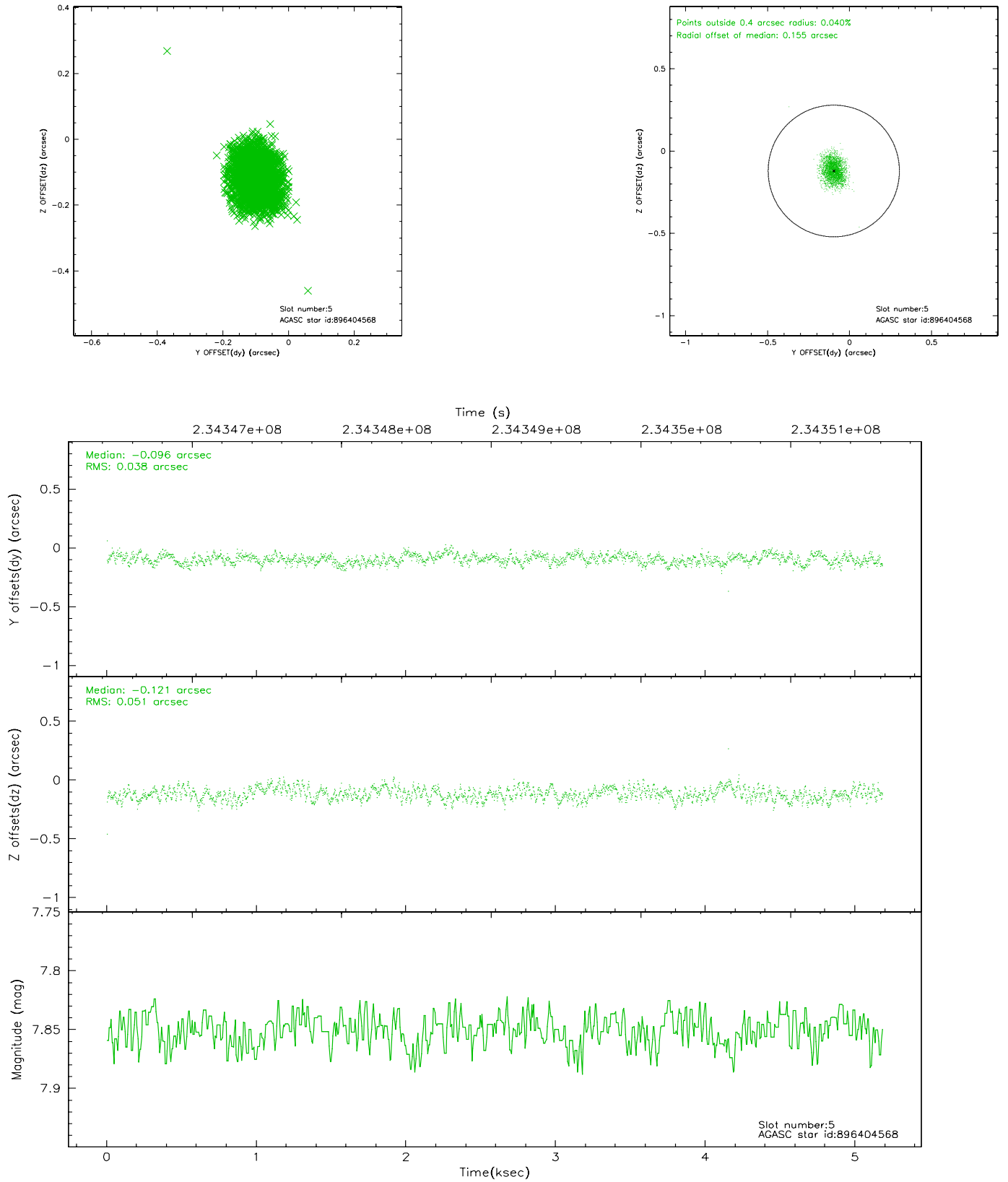
2.4.1 Slot 3



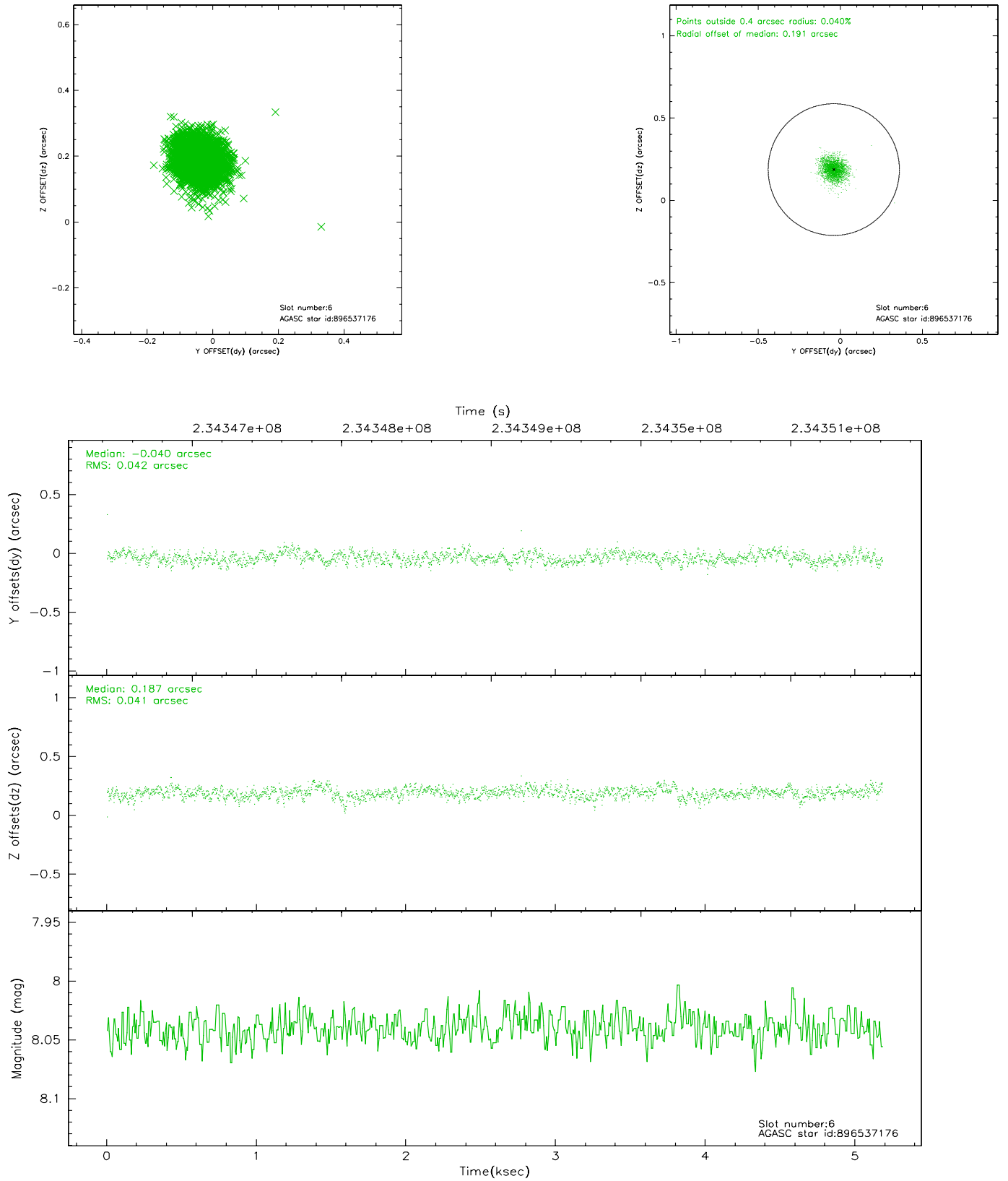
2.4.2 Slot 4



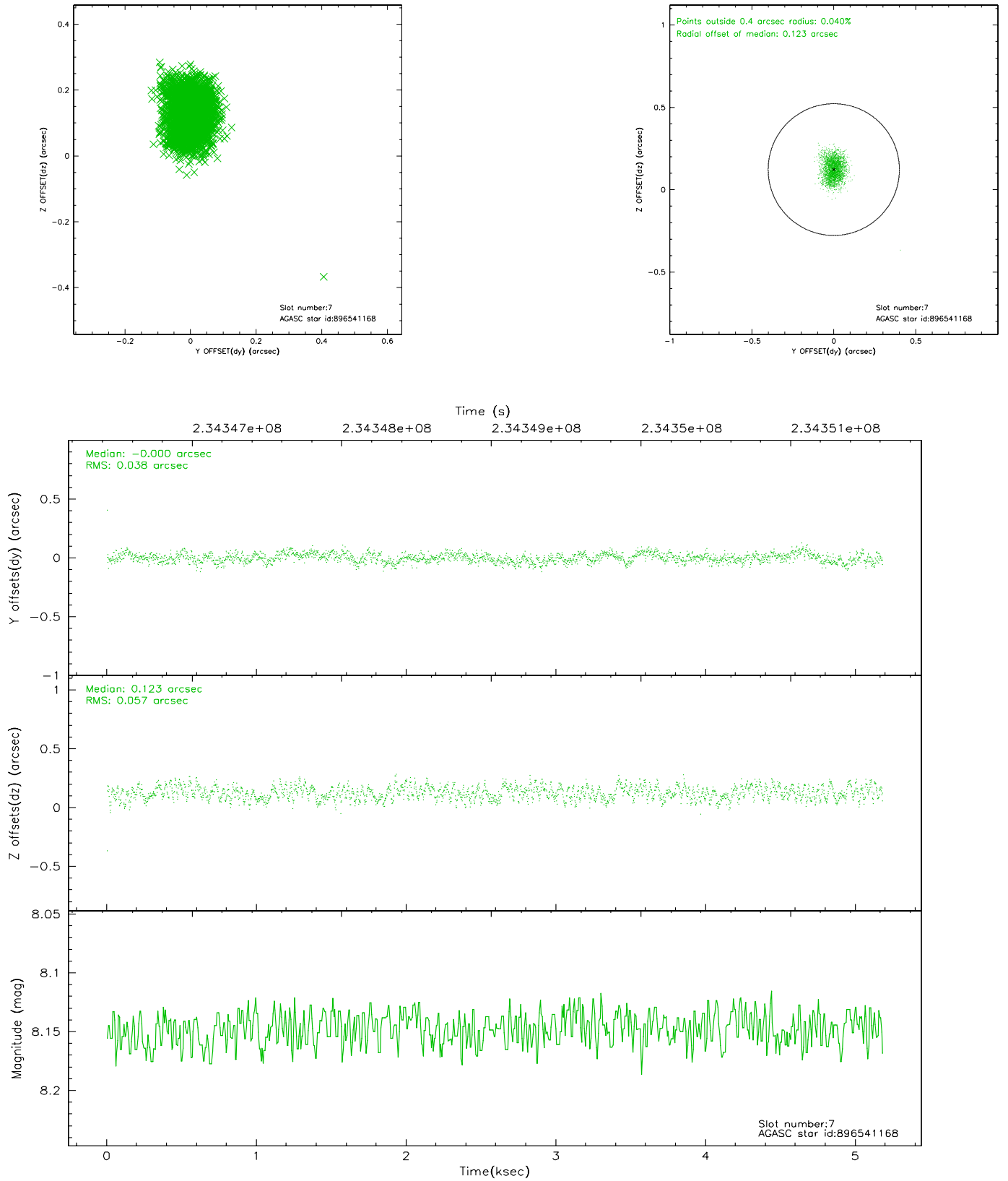
2.4.3 Slot 5



2.4.4 Slot 6

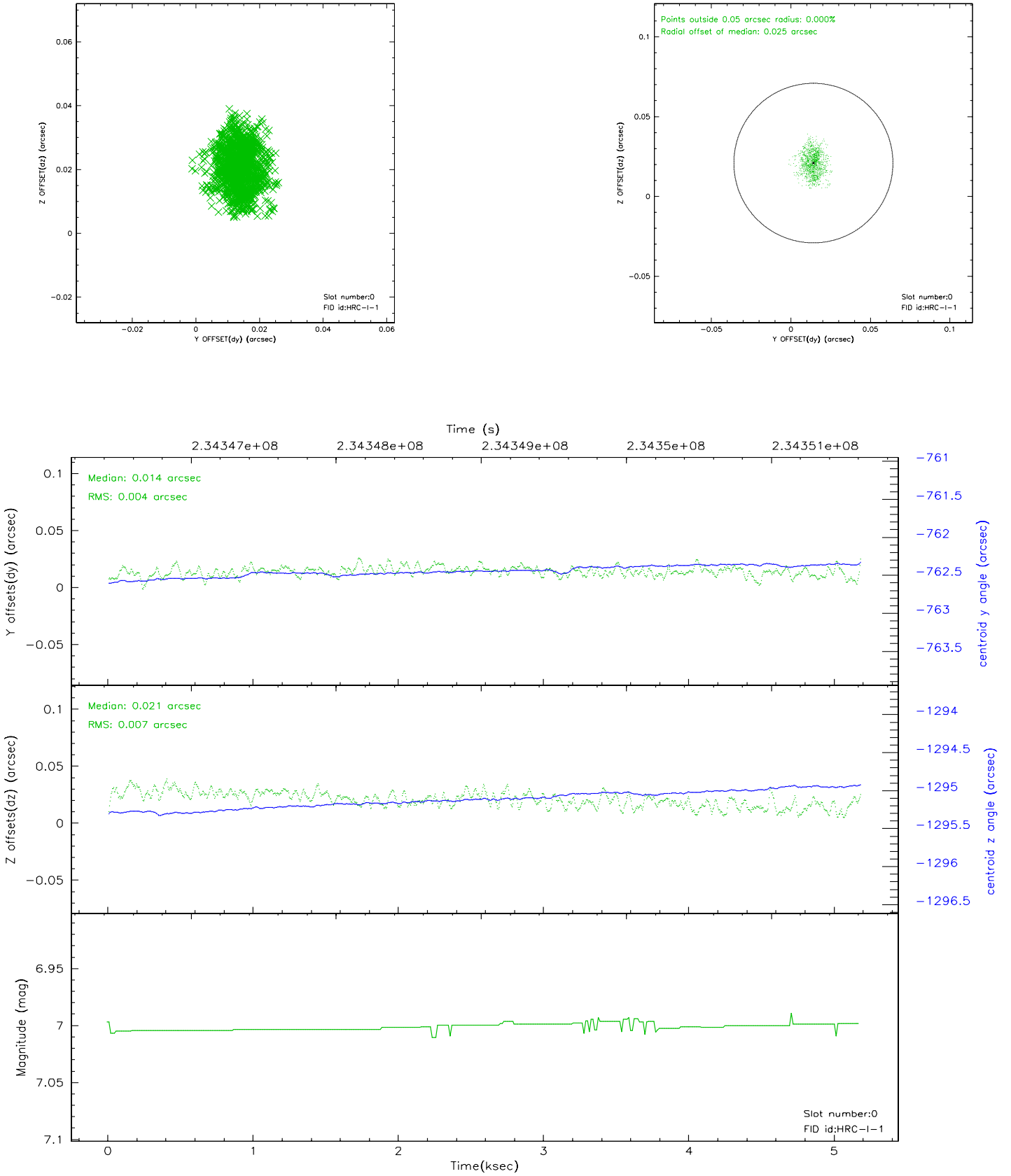


2.4.5 Slot 7

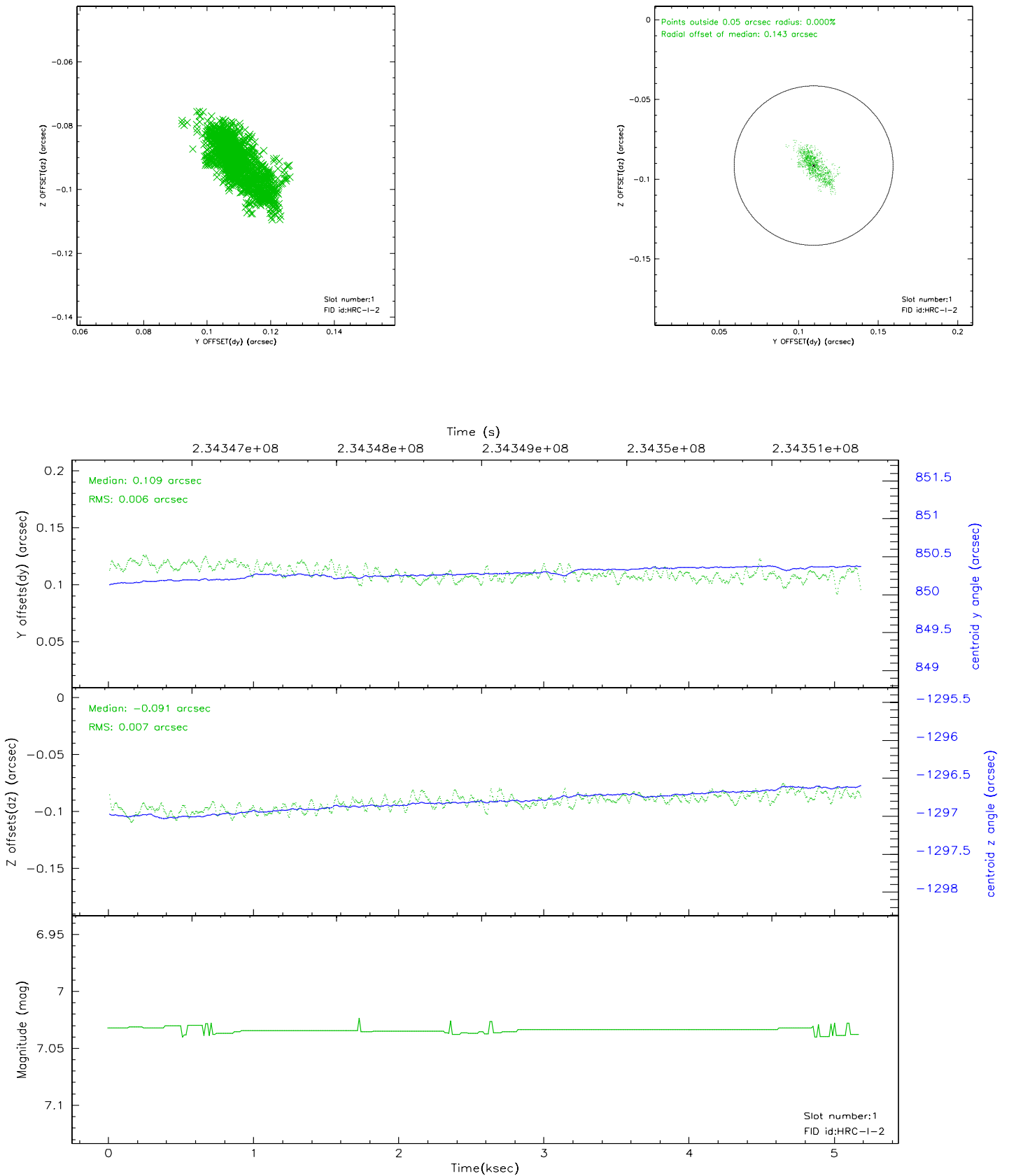


2.5 FID Slots

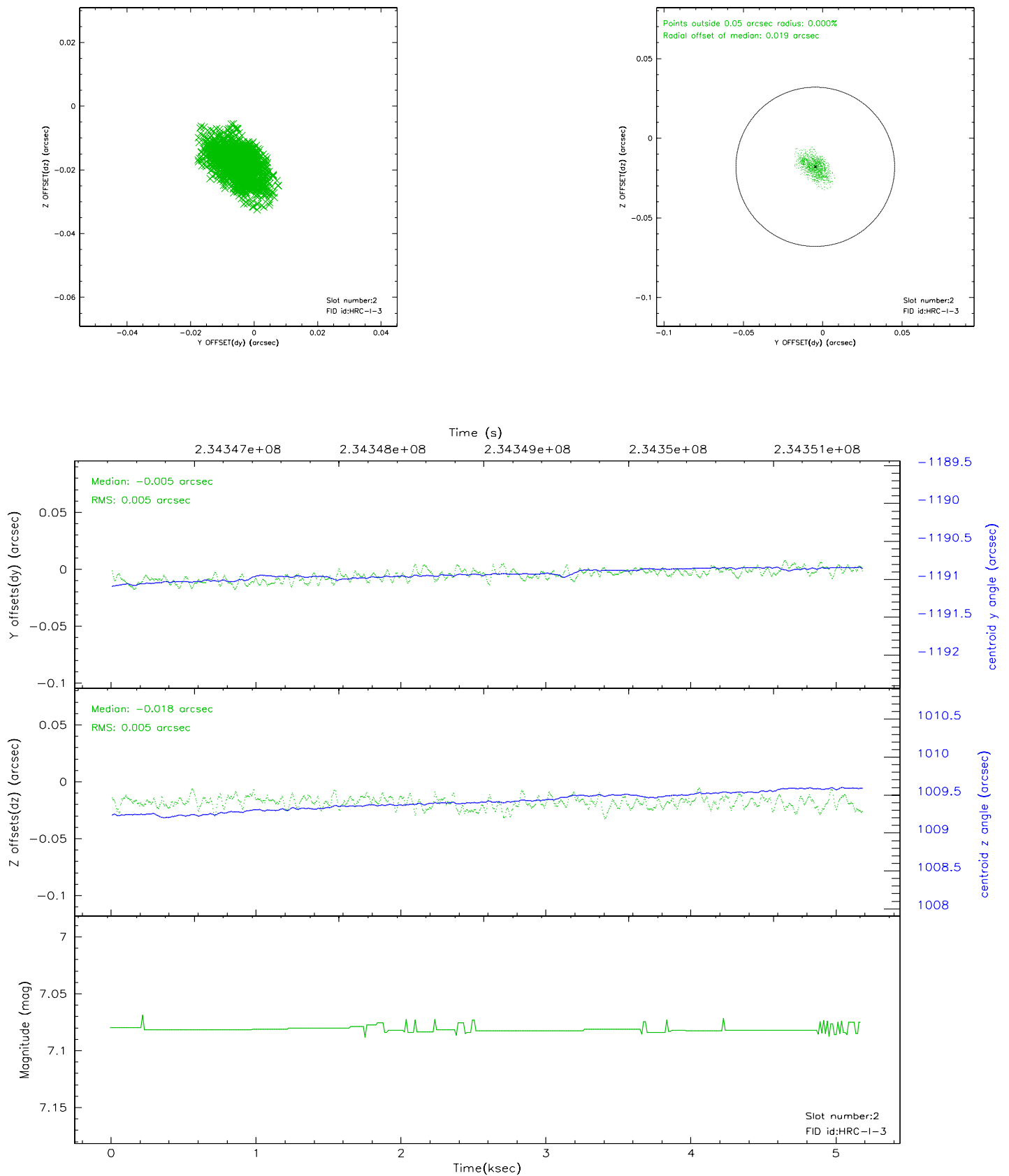
2.5.1 Slot 0



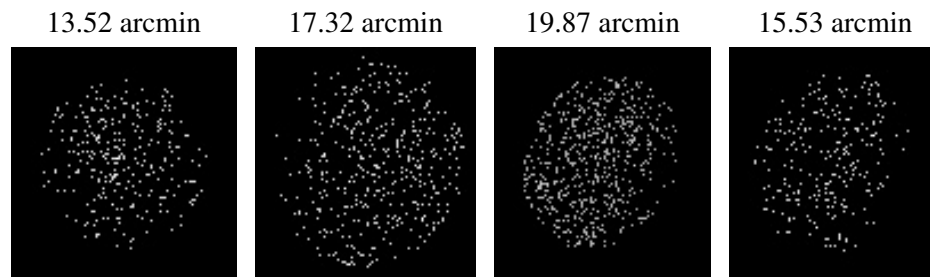
2.5.2 Slot 1



2.5.3 Slot 2



3 Point Sources



A Summary

A.1 Status

V&V Scientist	Beth Sundheim
V&V Date (YYYY-MM-DD)	2007.12.06
V&V Edition	1
V&V Disposition and Status	OK
V&V Charge Time	5.181375

A.2 Comments

The current observation has been reprocessed as part of Repro III ('C' supplement) the purpose of which is to update all HRC-I ObsIDs since Jan 2000 to the latest calibrations available for that configuration. Specifically, we are updating the DEGAP solution and the Gain Maps applied. For more information see the Repro IIIC web page at:

<http://asc.harvard.edu/cda/repro3.html#IIIC>

and the associated links.