

V&V Reference Report

L2 ASCDS Version : 8.5.1.1

Observation 6190 - L2 Version 4
Chandra X-Ray Center

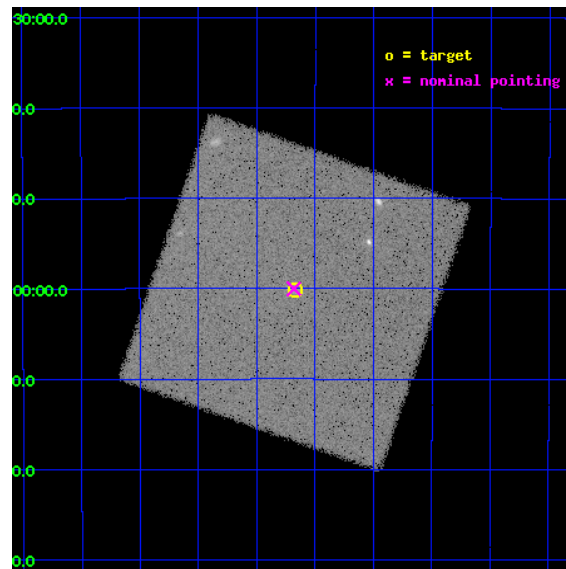
L2 Processing Date : Dec 24 2012

Contents

1	Front	2
2	OBI	3
2.1	OBI	3
2.1.1	Images	3
2.1.2	Parameters	4
2.1.3	Events	4
2.2	Compared Parameters	5
2.3	Aspect	6
2.4	Star Slots	9
2.4.1	Slot 3	9
2.4.2	Slot 4	10
2.4.3	Slot 5	11
2.4.4	Slot 6	12
2.4.5	Slot 7	13
2.5	FID Slots	14
2.5.1	Slot 0	14
2.5.2	Slot 1	15
2.5.3	Slot 2	16
A	Summary	17
A.1	Status	17
A.2	Comments	17

1 Front

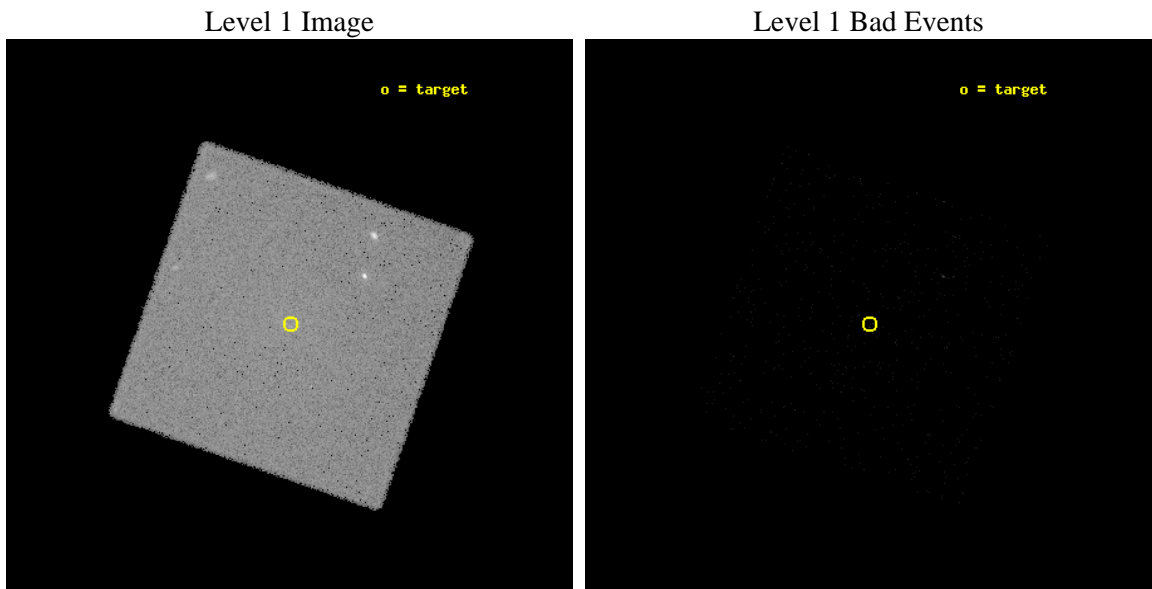
seq_num	400450	Sequence number
obs_id	6190	Observation id
title	Monitoring observations of the Galactic Center region	Proposal tit
observer	Dr. Rudy Wijnands	Principal investigator
object	GC-2	Source name
ra_targ	266.416667	Observer's specified target RA [deg]
dec_targ	-29.003056	Observer's specified target Dec [deg]
ra_nom	266.42038243492	Nominal RA [deg]
dec_nom	-29.000344599696	Nominal Dec [deg]
roll_nom	64.194578125708	Nominal Roll [deg]
revision	4	Processing version of data
ontime	5187.7814867496	[s]
livetime	5150.8309150213	Ontime multiplied by DTCOR
l2events	202859	Number of level 2 events



2 OBI

2.1 OBI

2.1.1 Images



2.1.2 Parameters

obi_num	0	Obi number	sched_exp_time	5000.000000	[s] Scheduled observation exposure time
ascdsver	8.5.1.1	Processing system revision	ontime	5187.7814867496	[s]
caldbver	4.5.5	 	l1events	319173	Number of level 1 events
date	2012-12-24T11:43:19	Date and time of file creation			
revision	4	Processing version of data			

2.1.3 Events

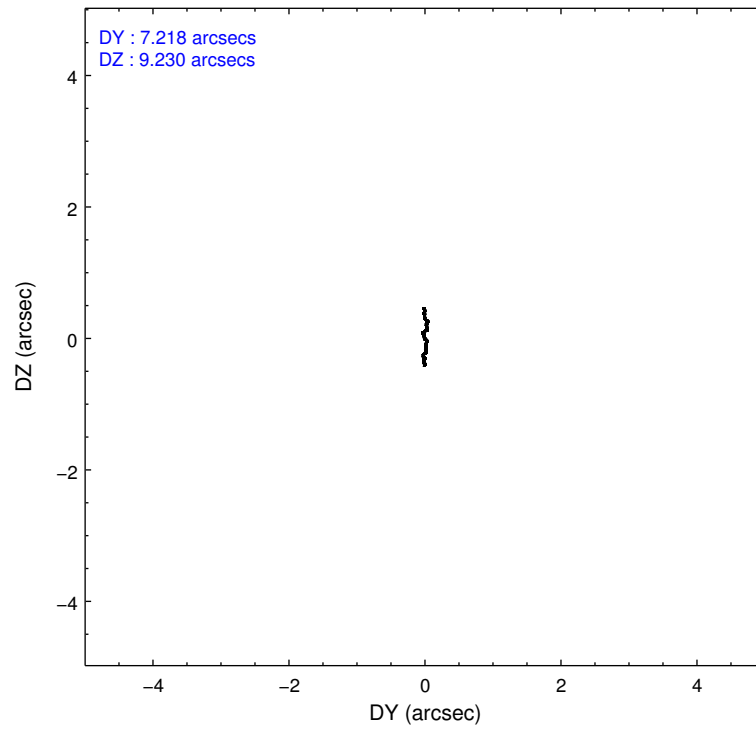
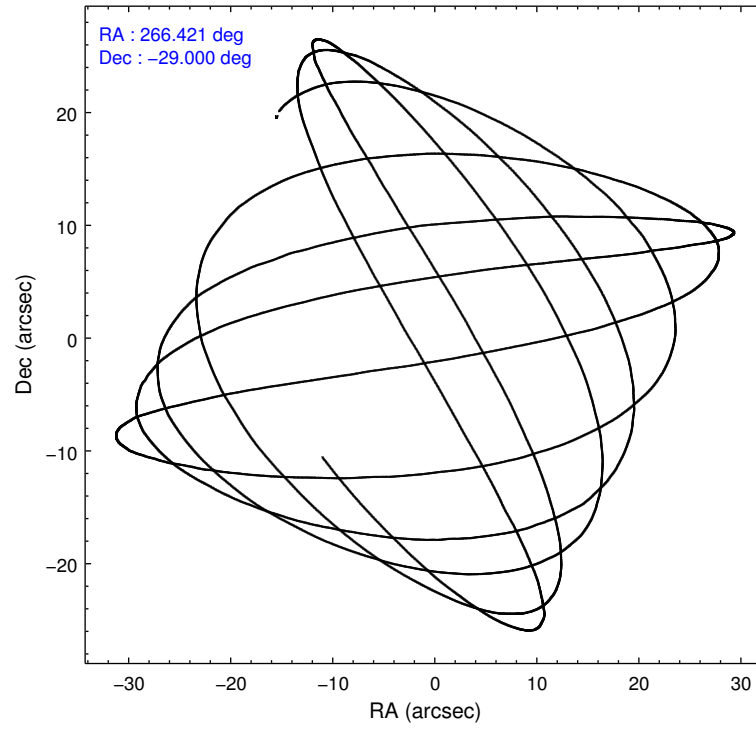
Level 1 Events

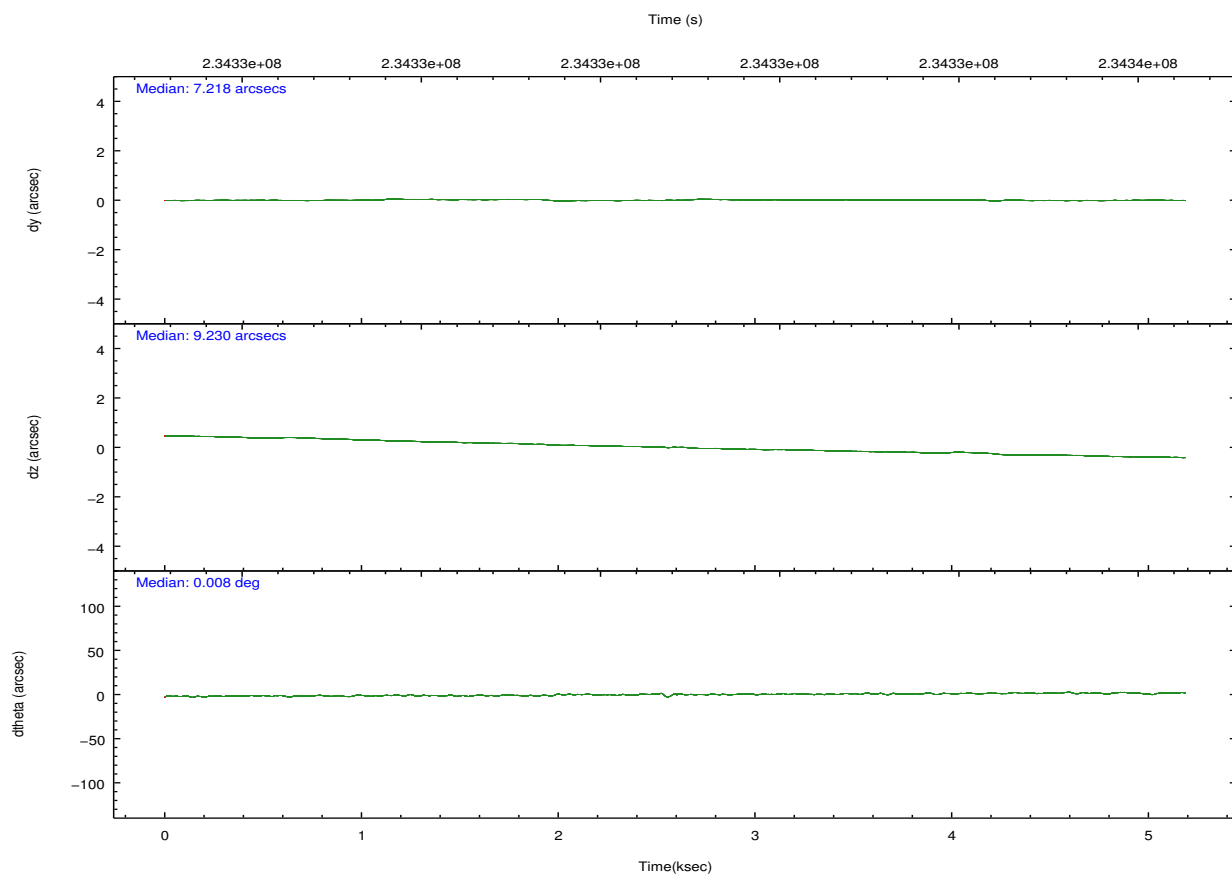
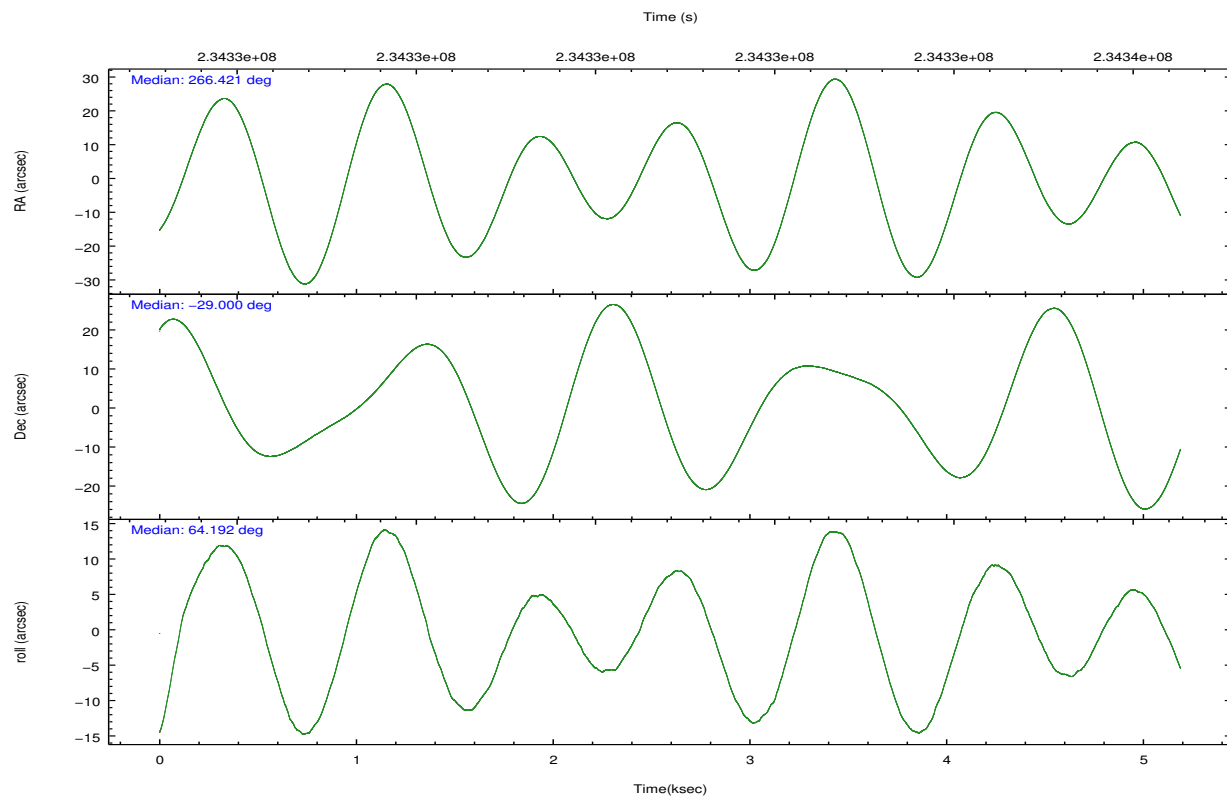
	segment 0
level 1 events	319173
rejected events	20579
rejected %	6%

2.2 Compared Parameters

Parameter	Planned	Actual	Parameter	Planned	Actual
Instrument	HRC	HRC	Obspar format version number	7	7
Detector	HRC-I	HRC-I	Obspar file type	PREDICTED	ACTUAL
Grating	NONE	NONE	Obspar update status	NONE	UPDATED
Data mode	OBSERVING	OBSERVING			
Observation mode	POINTING	POINTING			
[deg] Pointing RA	266.423223	266.4203824349173			
[deg] Pointing Dec	-29.027272	-29.00034459969591			
[deg] Pointing Roll	64.291445	64.19457812570813			
[mm] SIM focus pos	-1.040293	-1.038866356238299			
[mm] SIM defocus	0	0.001426264420575141			
[mm] SIM translation stage pos	126.985494	126.9829799899862			
[mm] SIM translation stage offset	0	0.002508901615314585			
[s] Observation start time (MET)	234330012.184000	234329599.51998			
Observation start date	2005-06-05T03:39:08	2005-06-05T03:33:19			
[s] Observation end time (MET)	234335012.184000	234335146.30773			
Observation end date	2005-06-05T05:02:28	2005-06-05T05:05:46			

2.3 Aspect



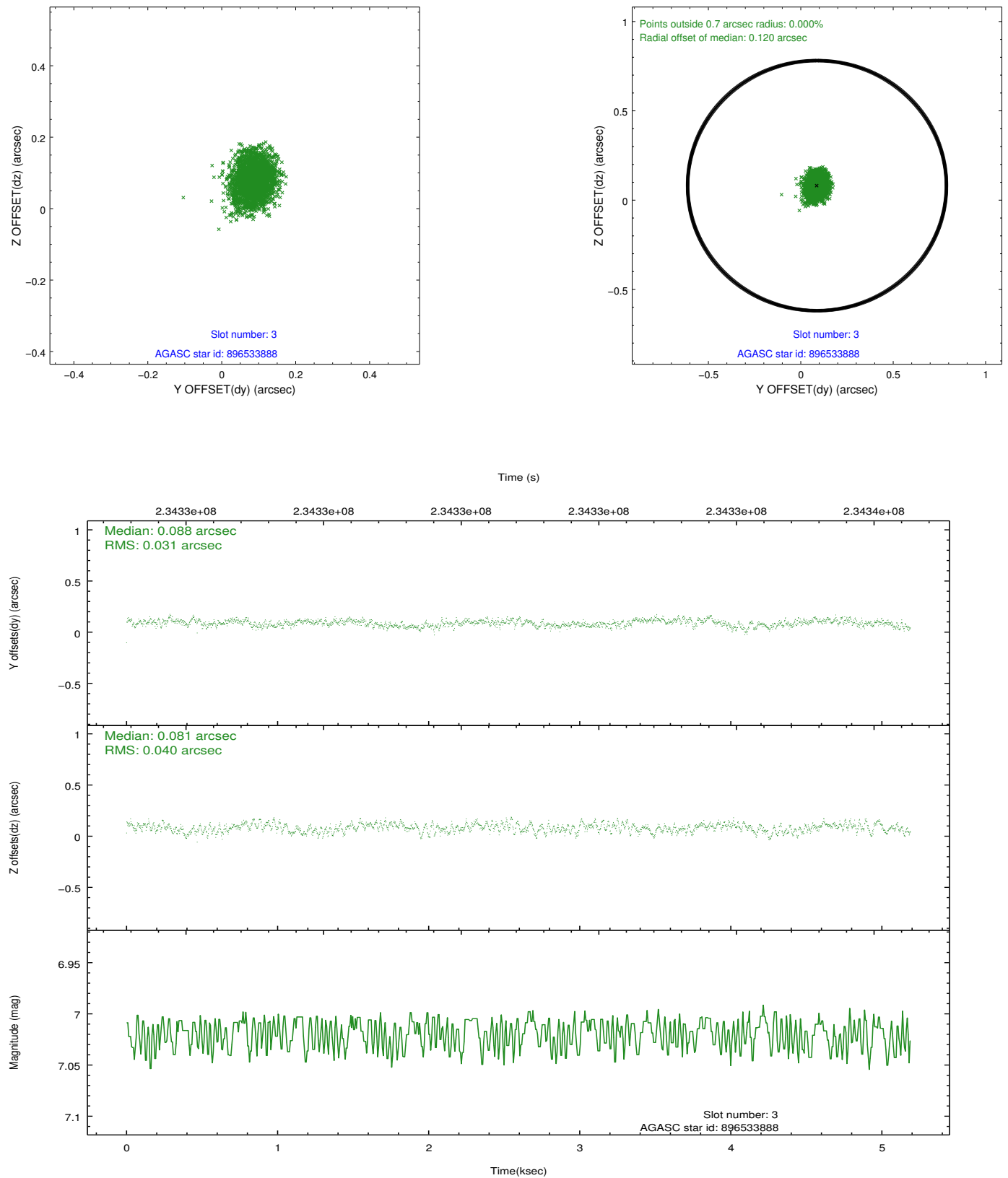


Slot Statistics

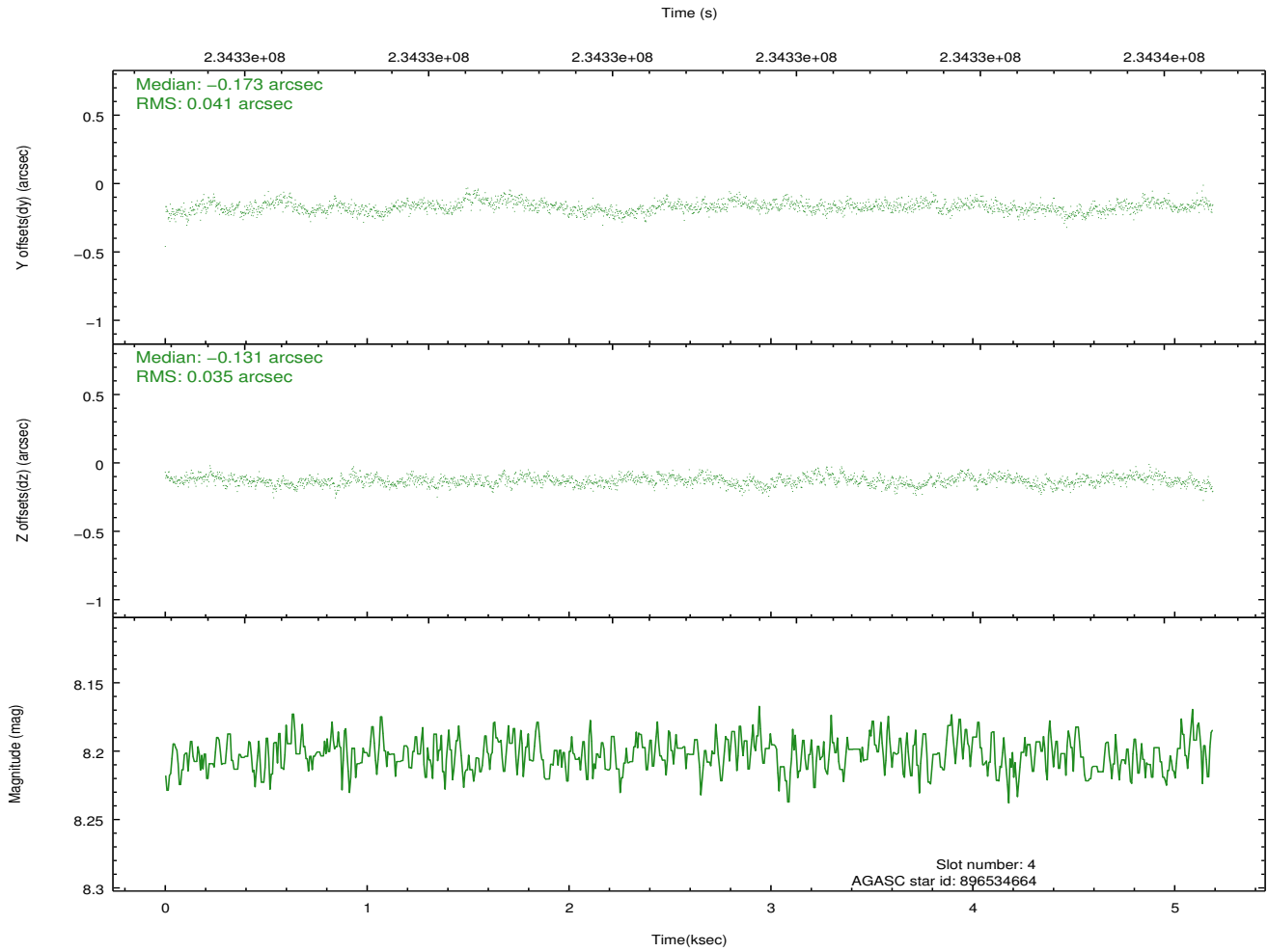
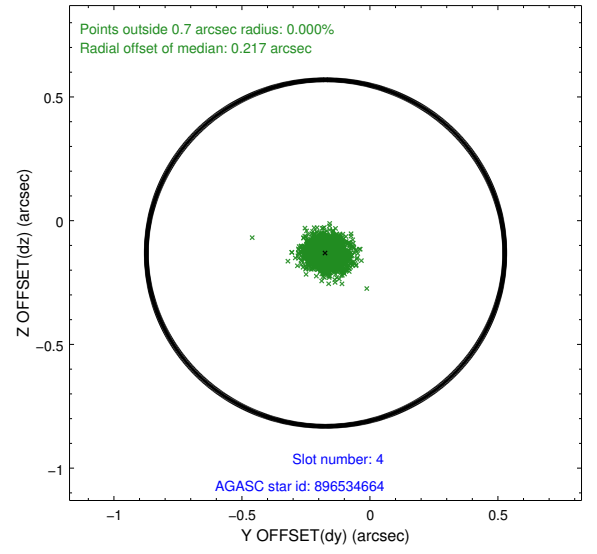
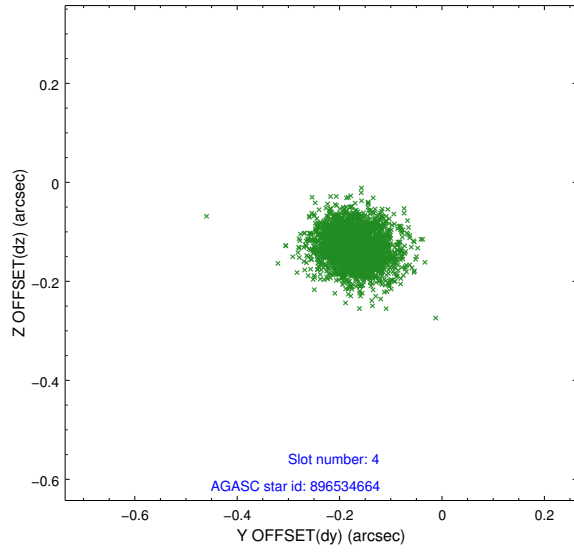
slot	status	id	mag	n_pts	med_dy	med_dz	dr1	dr2	ra	dec	mean_y	mean_z
0	FID	HRC-I-2	7.04	1266	0.049	-0.051	0.014	0.022	0.000000	0.000000	849.87	-1298.77
1	FID	HRC-I-3	7.08	1266	-0.052	-0.018	0.014	0.020	0.000000	0.000000	-1190.68	1006.36
2	FID	HRC-I-4	7.04	1266	0.123	-0.019	0.009	0.017	0.000000	0.000000	1279.16	1005.80
3	GUIDE	896533888	7.02	2532	0.088	0.081	0.054	0.086	266.666434	-29.392757	-855.02	-1257.87
4	GUIDE	896534664	8.20	2532	-0.173	-0.131	0.056	0.095	266.405570	-28.407461	1985.81	1018.32
5	GUIDE	896537776	7.53	2532	0.136	0.127	0.059	0.097	266.655684	-29.665673	-1754.85	-1651.52
6	GUIDE	896538696	6.82	2532	-0.169	-0.142	0.049	0.082	266.298470	-28.325572	2103.64	1451.81
7	GUIDE	896541360	7.72	2530	0.121	0.068	0.061	0.099	266.684478	-29.453744	-1027.74	-1403.16

2.4 Star Slots

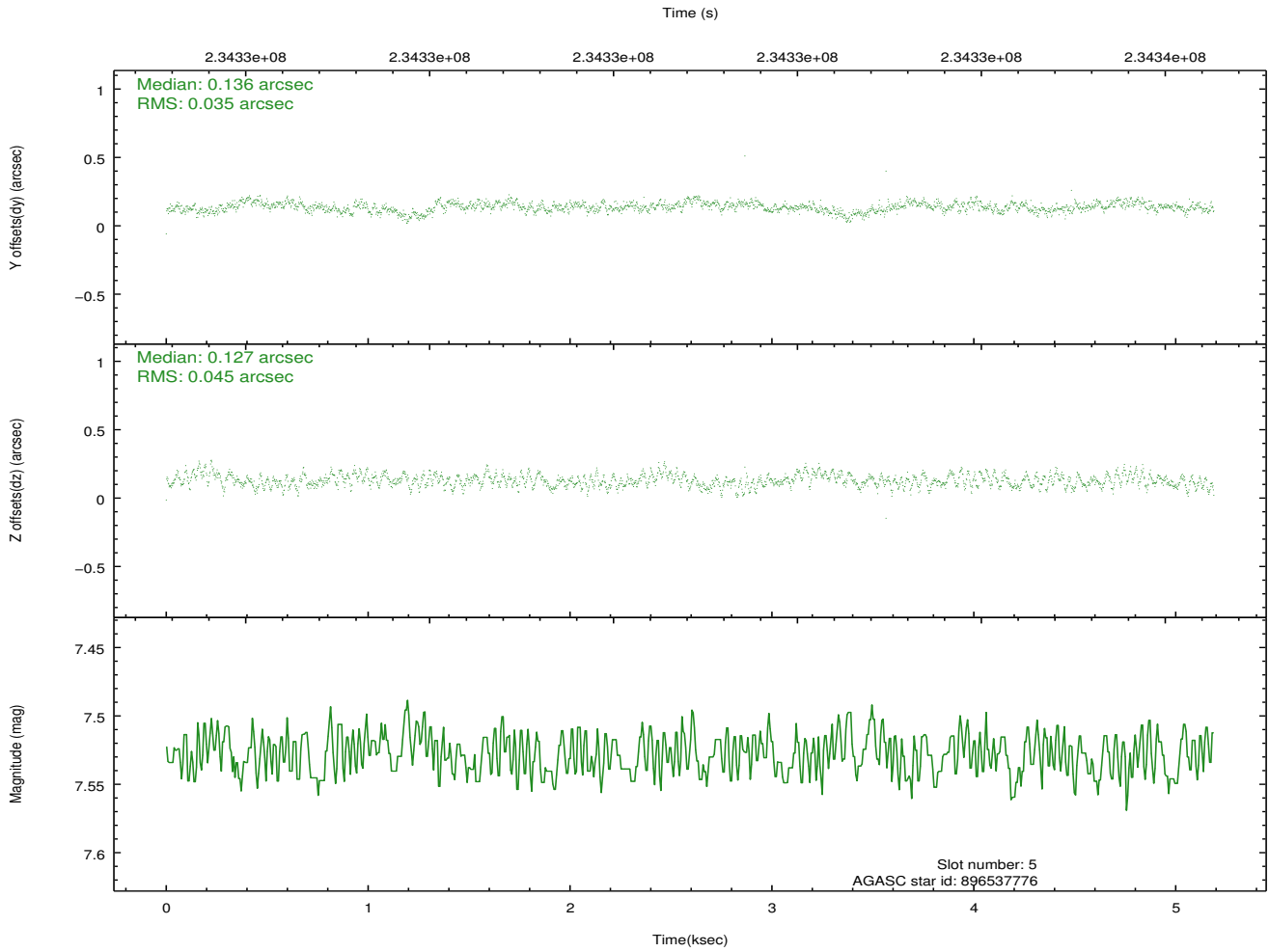
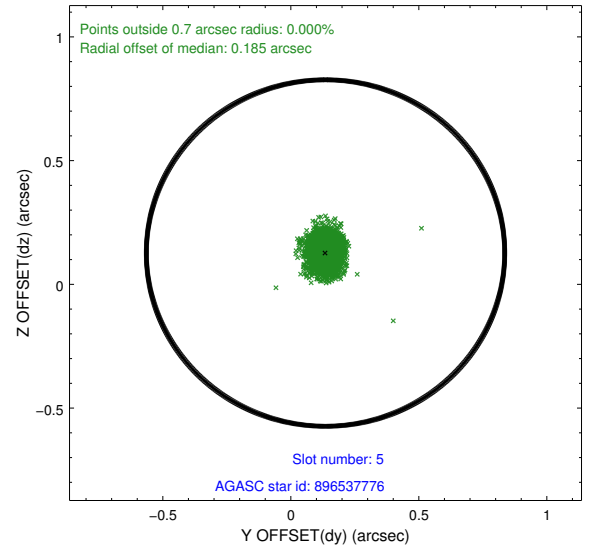
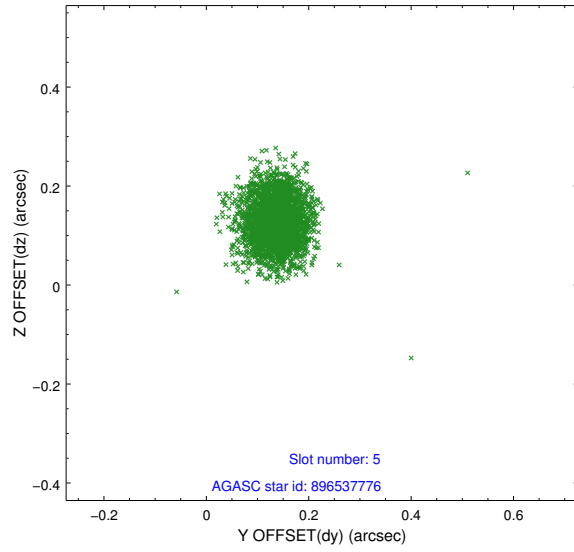
2.4.1 Slot 3



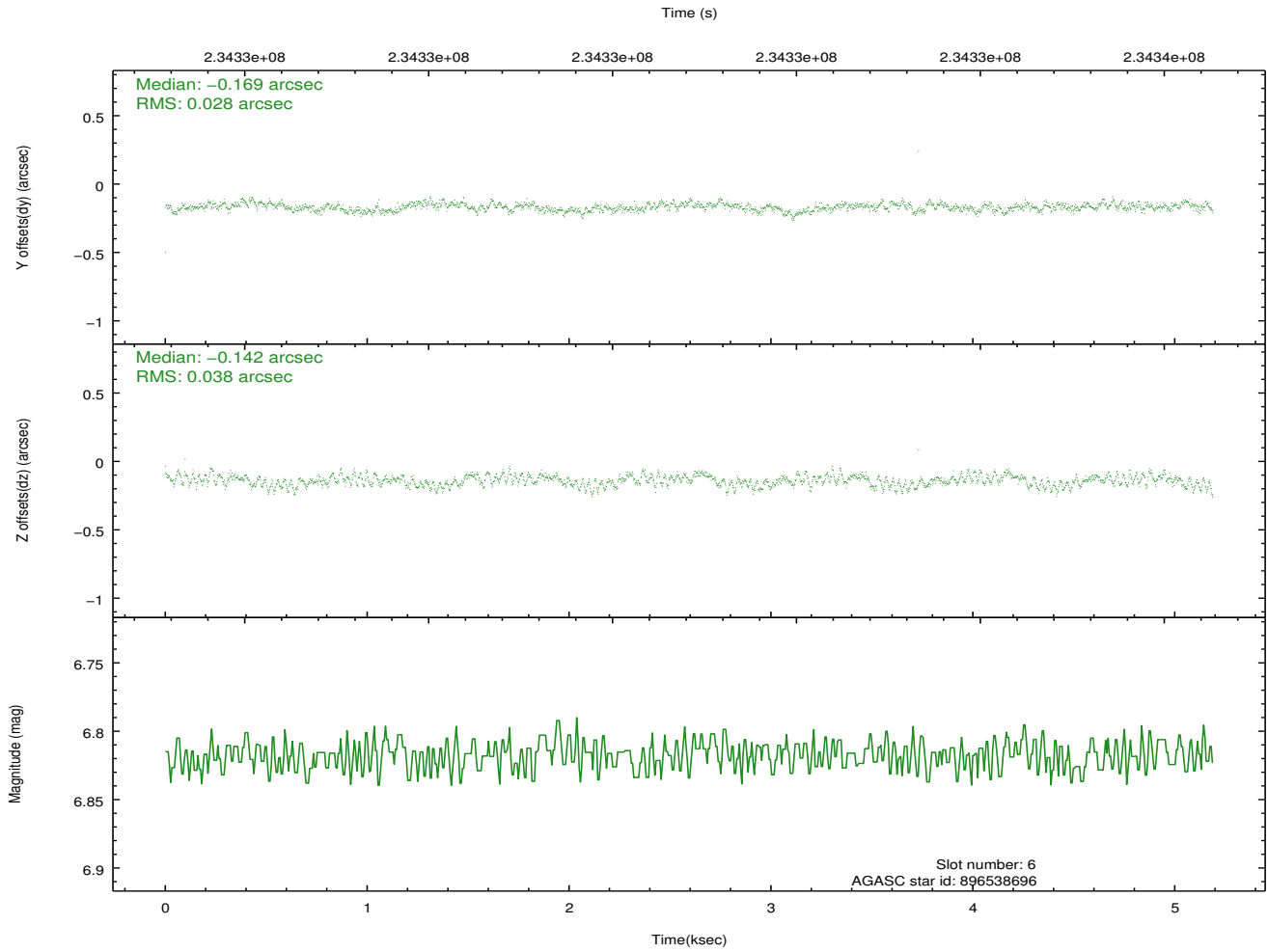
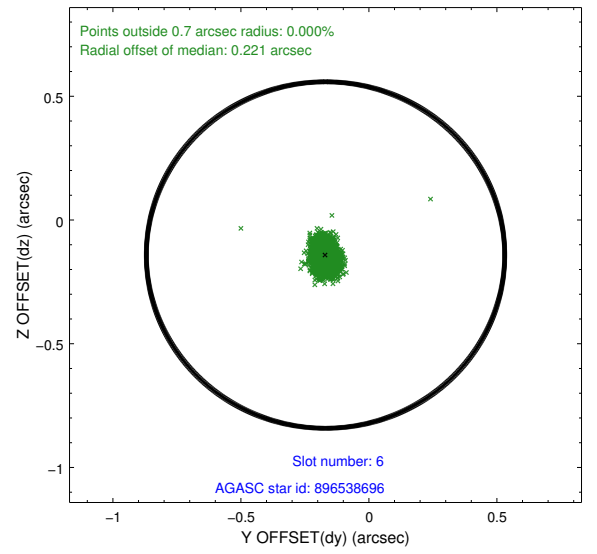
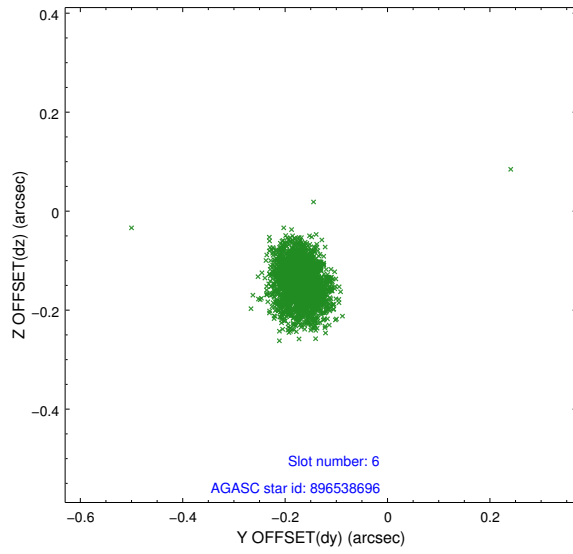
2.4.2 Slot 4



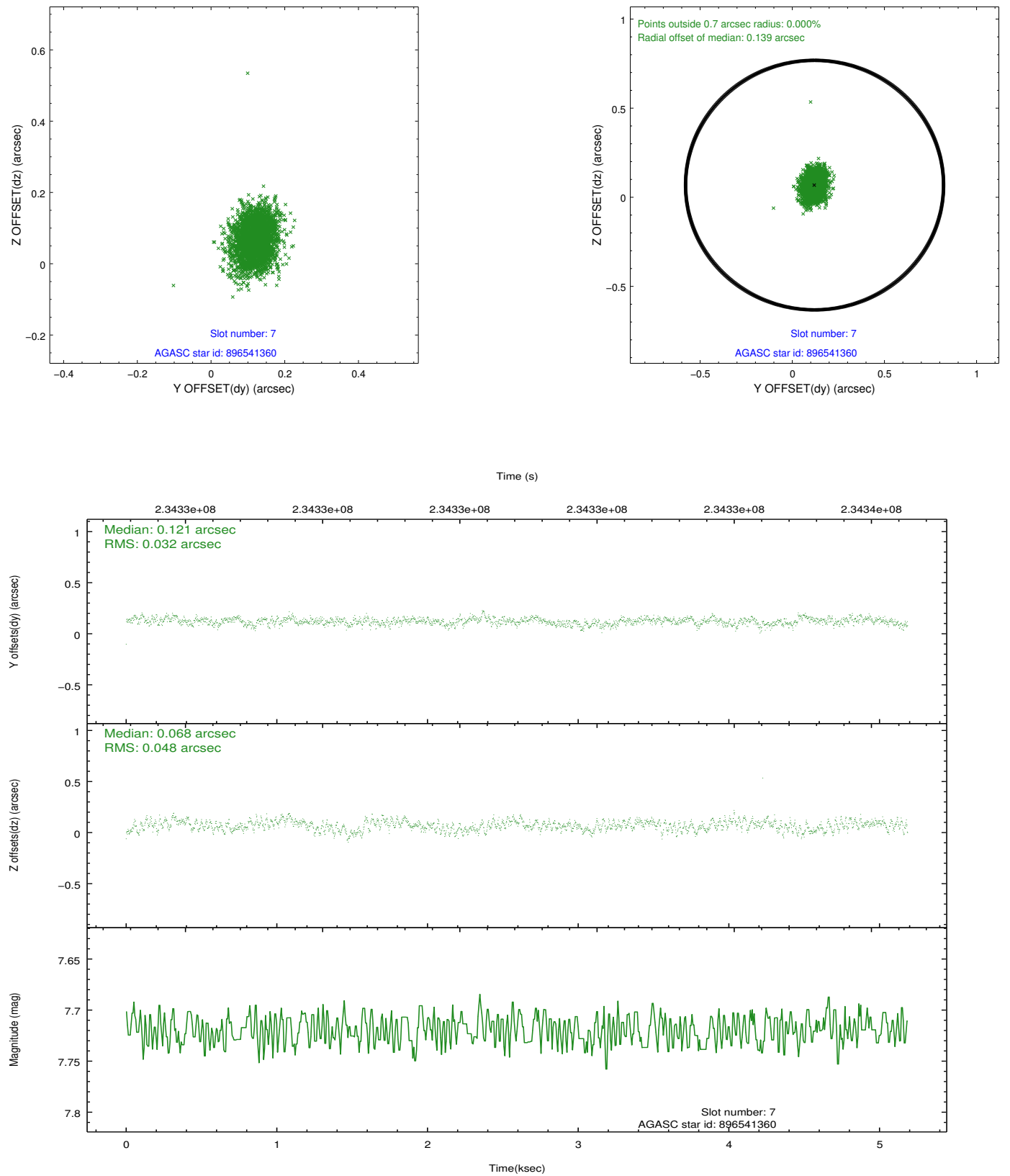
2.4.3 Slot 5



2.4.4 Slot 6

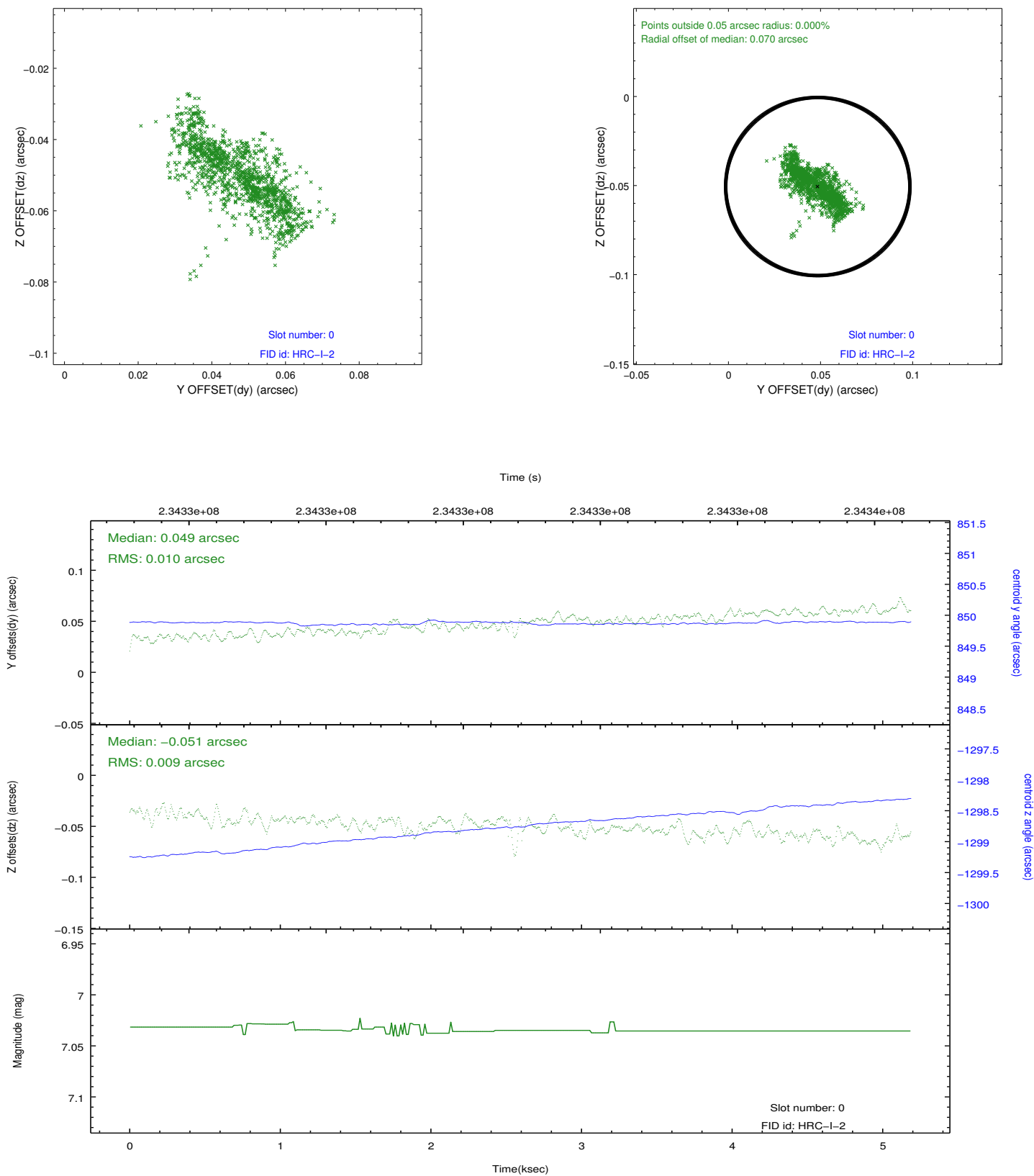


2.4.5 Slot 7

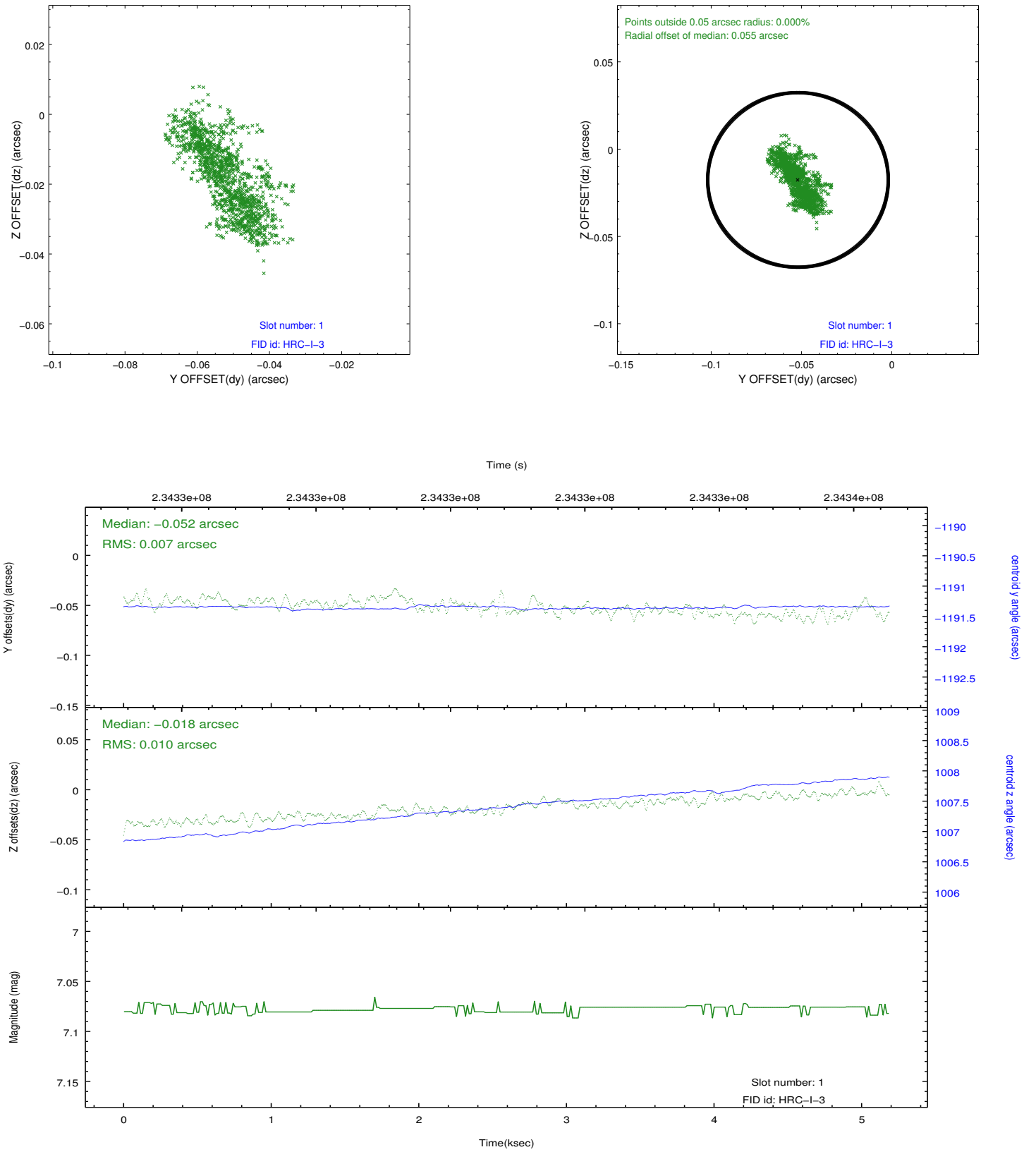


2.5 FID Slots

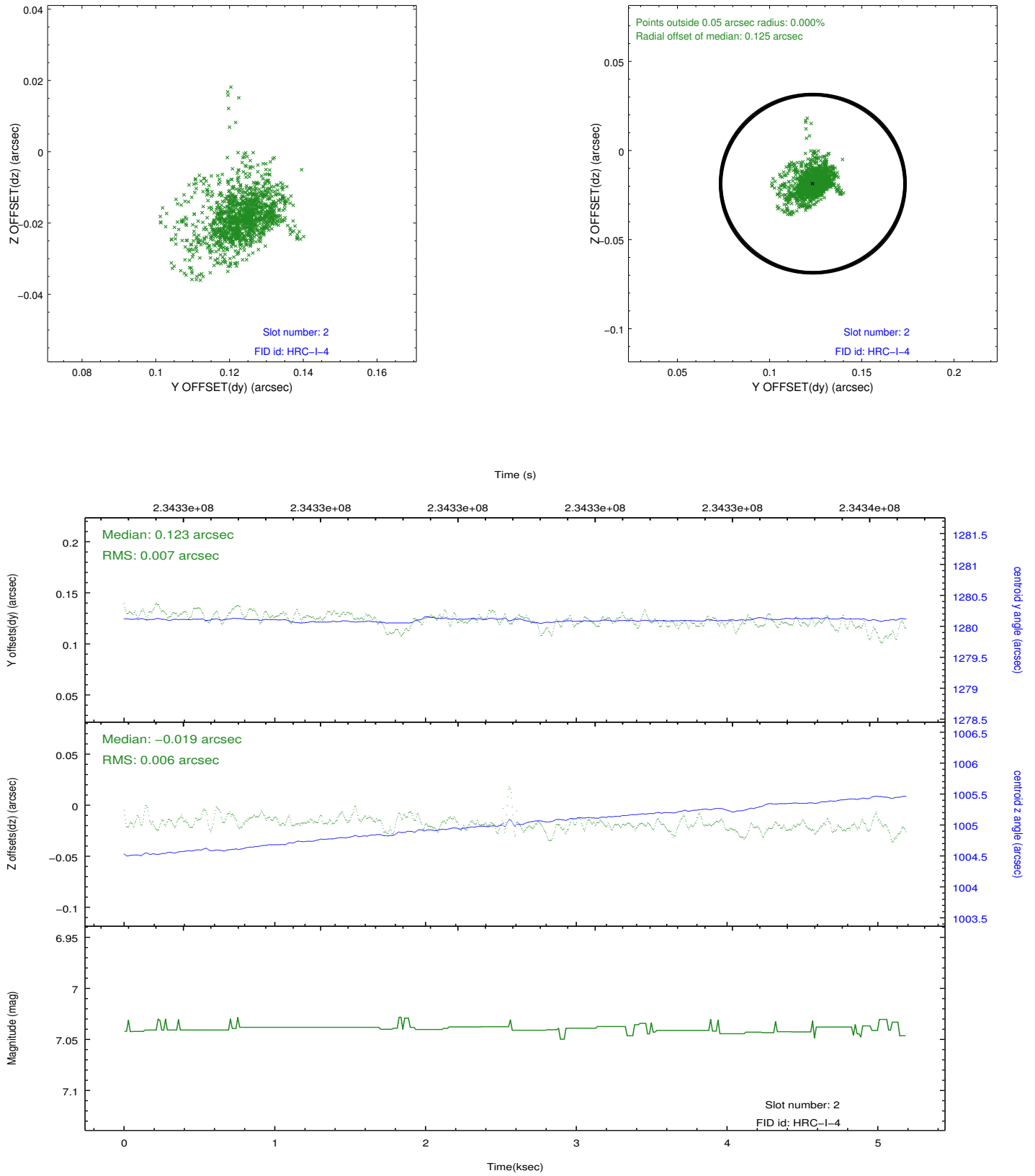
2.5.1 Slot 0



2.5.2 Slot 1



2.5.3 Slot 2



A Summary

A.1 Status

V&V Scientist	Jen Lauer
V&V Date (YYYY-MM-DD)	2013.01.16
V&V Edition	1
V&V Disposition and Status	OK
V&V Charge Time	5.187781

A.2 Comments

Joint Proposal: CX0-XMM