

# V&V Reference Report

## L2 ASCDS Version : 7.6.7.1

Observation 6189 - L2 Version 3  
Chandra X-Ray Center

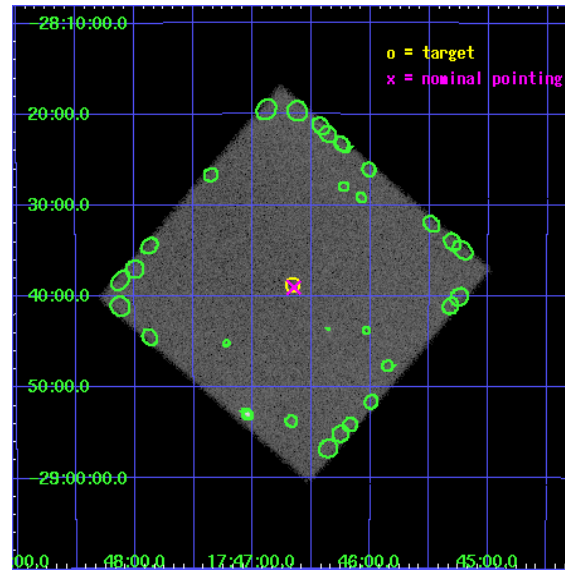
L2 Processing Date : Nov 24 2007

## Contents

<b>1</b>	<b>Front</b>	<b>2</b>
<b>2</b>	<b>OBI</b>	<b>3</b>
2.1	OBI . . . . .	3
2.1.1	Images . . . . .	3
2.1.2	Parameters . . . . .	4
2.1.3	Events . . . . .	4
2.2	Compared Parameters . . . . .	5
2.3	Aspect . . . . .	6
2.4	Star Slots . . . . .	9
2.4.1	Slot 3 . . . . .	9
2.4.2	Slot 4 . . . . .	10
2.4.3	Slot 5 . . . . .	11
2.4.4	Slot 6 . . . . .	12
2.4.5	Slot 7 . . . . .	13
2.5	FID Slots . . . . .	14
2.5.1	Slot 0 . . . . .	14
2.5.2	Slot 1 . . . . .	15
2.5.3	Slot 2 . . . . .	16
<b>3</b>	<b>Point Sources</b>	<b>17</b>
<b>A</b>	<b>Summary</b>	<b>18</b>
A.1	Status . . . . .	18
A.2	Comments . . . . .	18

# 1 Front

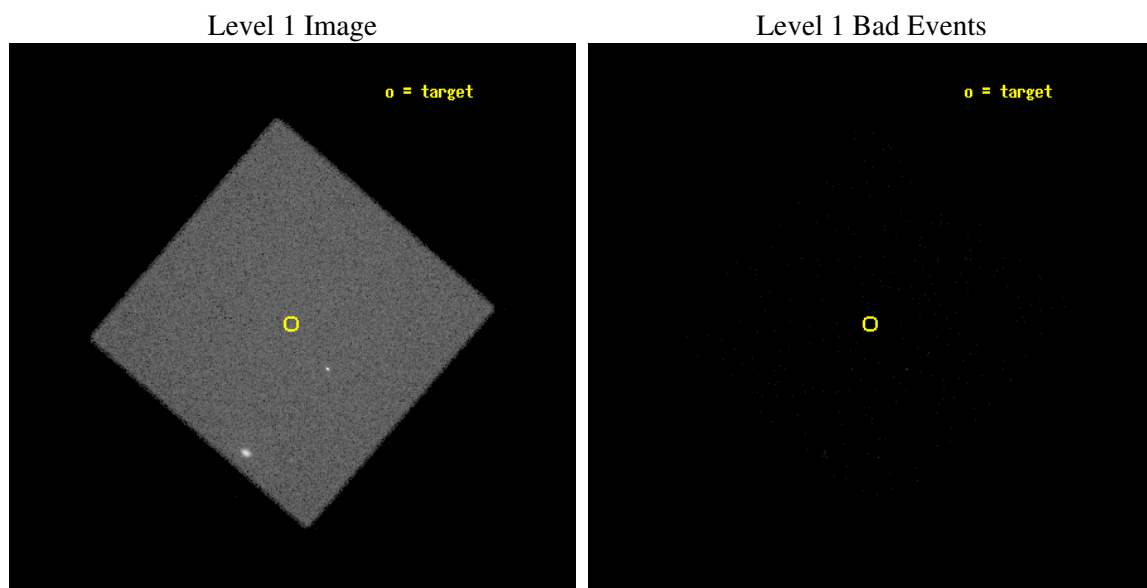
seq_num	400471
obs_id	6189
title	Monitoring observations of the Galactic Center region
observer	Dr. Rudy Wijnands
object	GC-1
ra_targ	266.664167
dec_targ	-28.647222
ra_nom	266.66230781167
dec_nom	-28.650928848611
roll_nom	265.81735474107
revision	3
ontime	4382.1314519048
livetime	4336.698158758
l2events	314393



## 2 OBI

### 2.1 OBI

#### 2.1.1 Images



### 2.1.2 Parameters

obi_num	0
ascdsver	7.6.11.2
caldbver	3.4.1
date	2007-11-24T19:17:23
revision	3

sched_exp_time	4200.000000
ontime	4382.1314519048
l1events	536958

### 2.1.3 Events

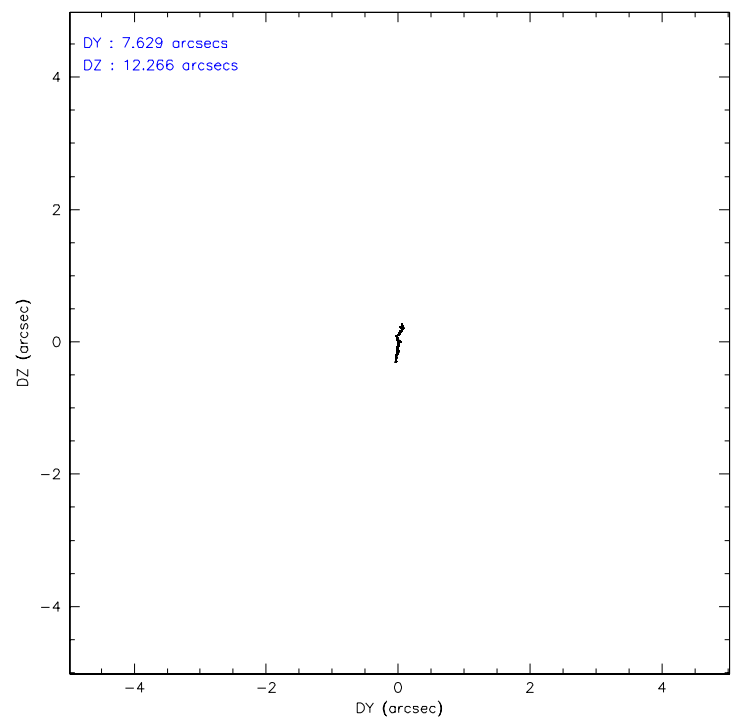
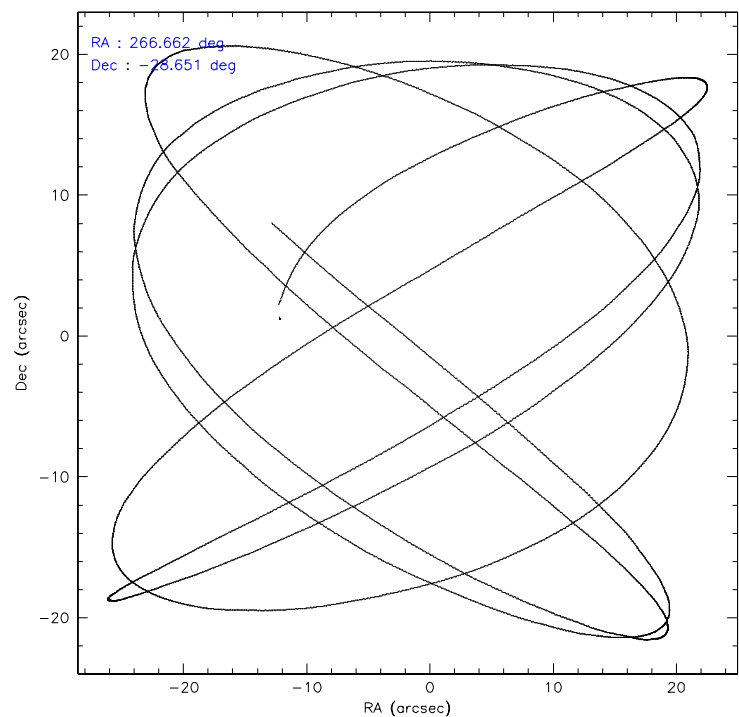
#### Level 1 Events

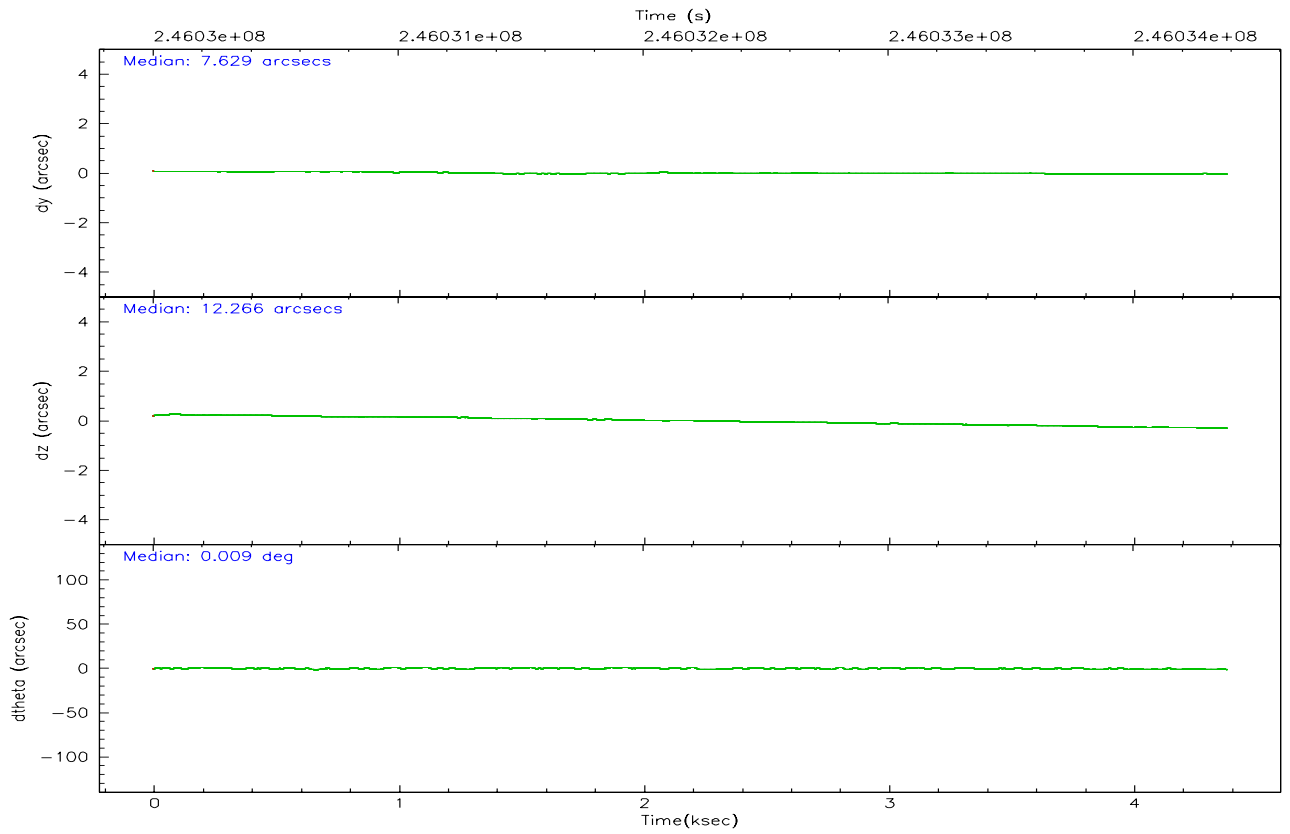
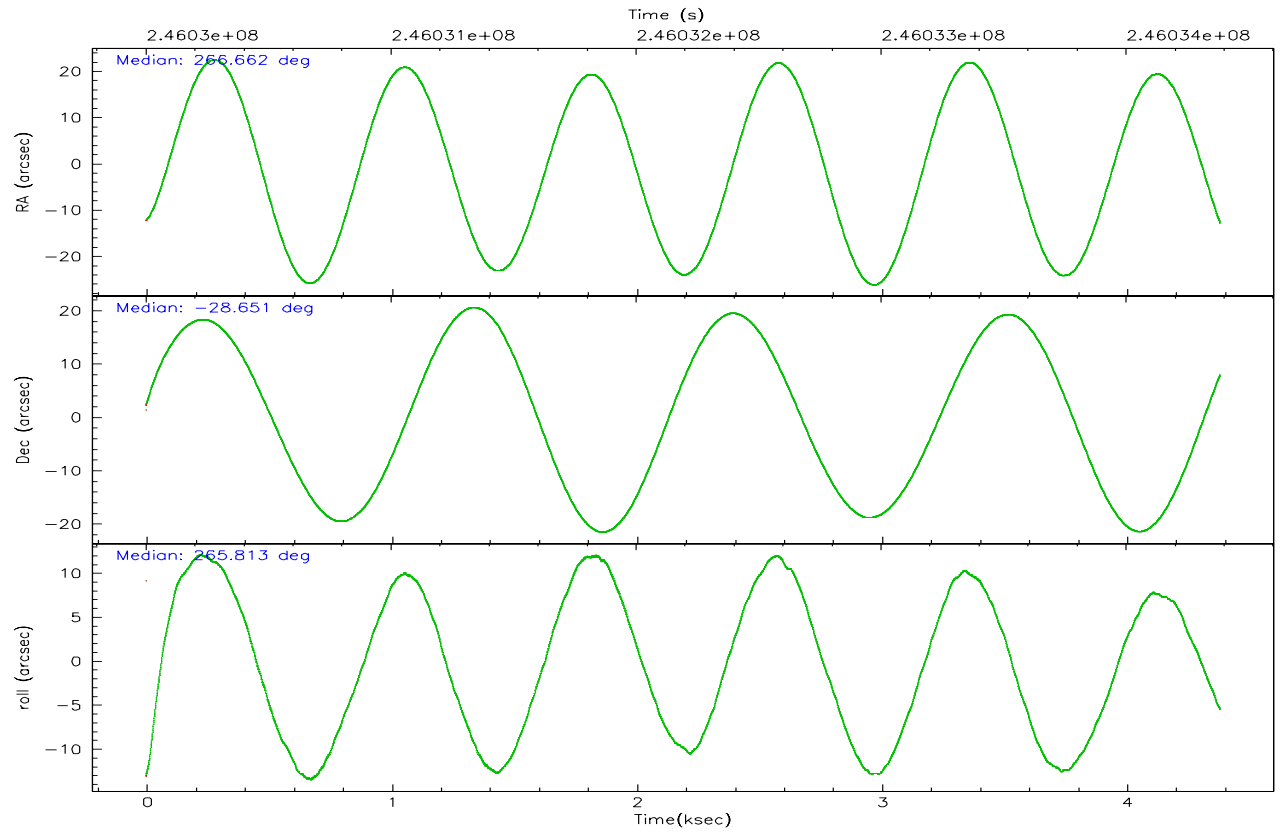
	<b>segment 0</b>
level 1 events	536958
rejected events	96016
rejected %	17%

## 2.2 Compared Parameters

Parameter	Planned	Actual	Parameter	Planned	Actual
Instrument	HRC	HRC	Obspar format version number	6	6
Detector	HRC-I	HRC-I	Obspar file type	PREDICTED	ACTUAL
Grating	NONE	NONE	Obspar update status	NONE	UPDATED
Data mode	OBSERVING	OBSERVING			
Observation mode	POINTING	POINTING			
Pointing RA	266.647934	266.6623078116672			
Pointing Dec	-28.626822	-28.65092884861139			
Pointing Roll	265.905994	265.8173547410736			
Window start time	245721664.184000	245721664.184000			
Window stop time	247190464.184000	247190464.184000			
SIM focus pos (mm)	-1.040293	-1.038866356238299			
SIM defocus (mm)	0	0.001426264420575141			
SIM translation stage pos (mm)	126.985494	126.9829799899862			
SIM translation stage offset (mm)	0	0.002508901615314585			
Observation start time	246030178.184000	246029276.51884			
Observation start date	2005-10-18T13:41:54	2005-10-18T13:27:56			
Observation end time	246034378.184000	246035309.66912			
Observation end date	2005-10-18T14:51:54	2005-10-18T15:08:29			

### 2.3 Aspect





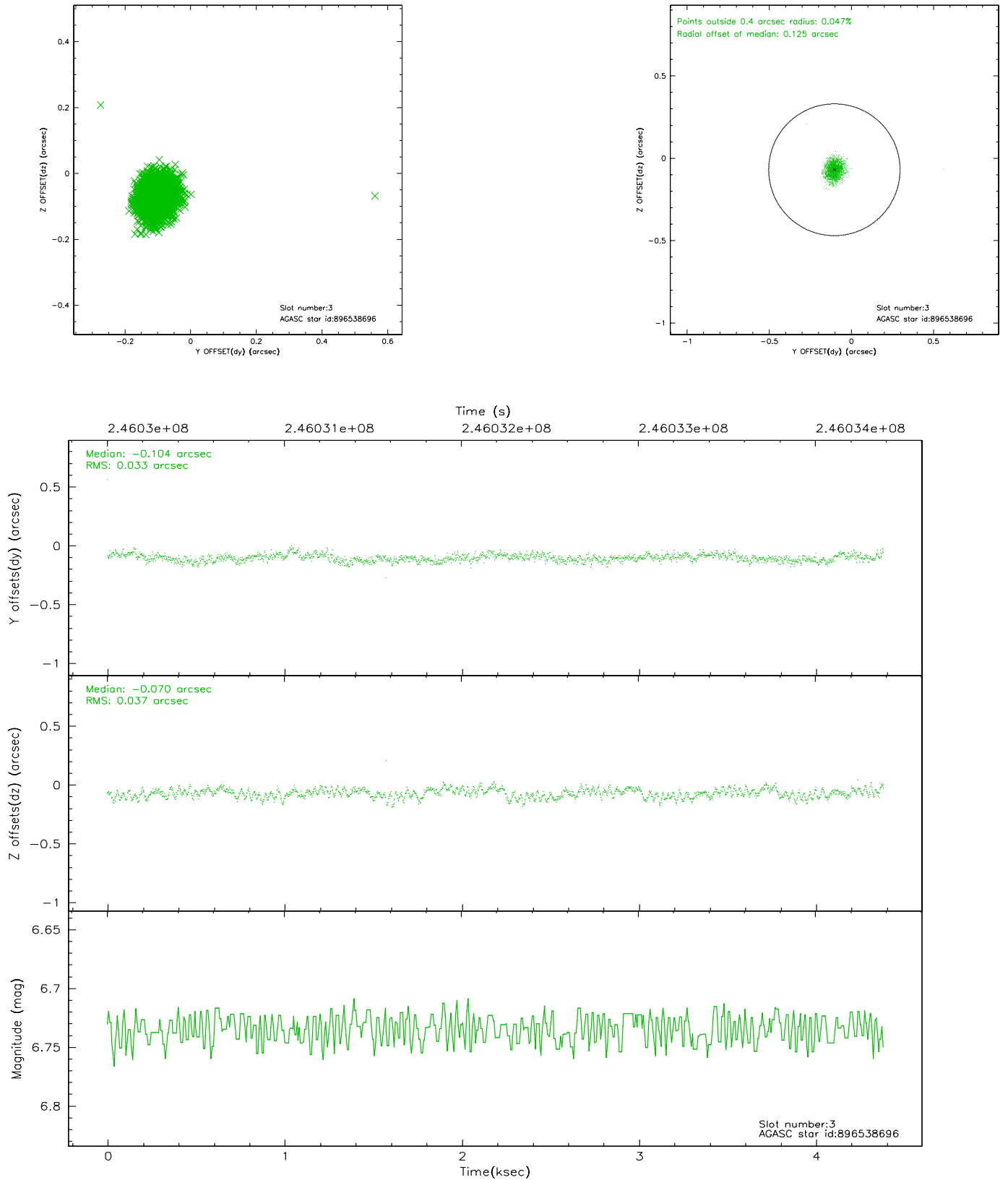
### Slot Statistics

slot	status	id	mag	n_pts	med_dy	med_dz	dr1	dr2	ra	dec	mean_y	mean_z
0	FID	HRC-I-1	7.05	1070	-0.006	0.016	0.010	0.017	0.000000	0.000000	-763.26	-1300.23
1	FID	HRC-I-2	7.08	1070	0.167	-0.134	0.011	0.020	0.000000	0.000000	848.83	-1303.18
2	FID	HRC-I-3	7.14	1070	-0.043	0.028	0.008	0.015	0.000000	0.000000	-1190.96	1003.14
3	GUIDE	896538696	6.73	2139	-0.104	-0.070	0.051	0.080	266.298470	-28.325572	-1000.88	-1182.88
4	GUIDE	896540888	7.91	2138	-0.063	-0.001	0.063	0.103	267.212234	-28.246138	-1491.04	1686.03
5	GUIDE	896541576	8.18	2138	0.003	0.100	0.066	0.103	267.051055	-28.762912	399.38	1304.20
6	GUIDE	896539744	8.34	2138	-0.064	-0.161	0.071	0.113	266.154264	-28.178023	-1496.08	-1678.23
7	GUIDE	896534000	9.28	2134	0.224	0.135	0.090	0.151	267.299113	-29.228915	2021.14	2194.47

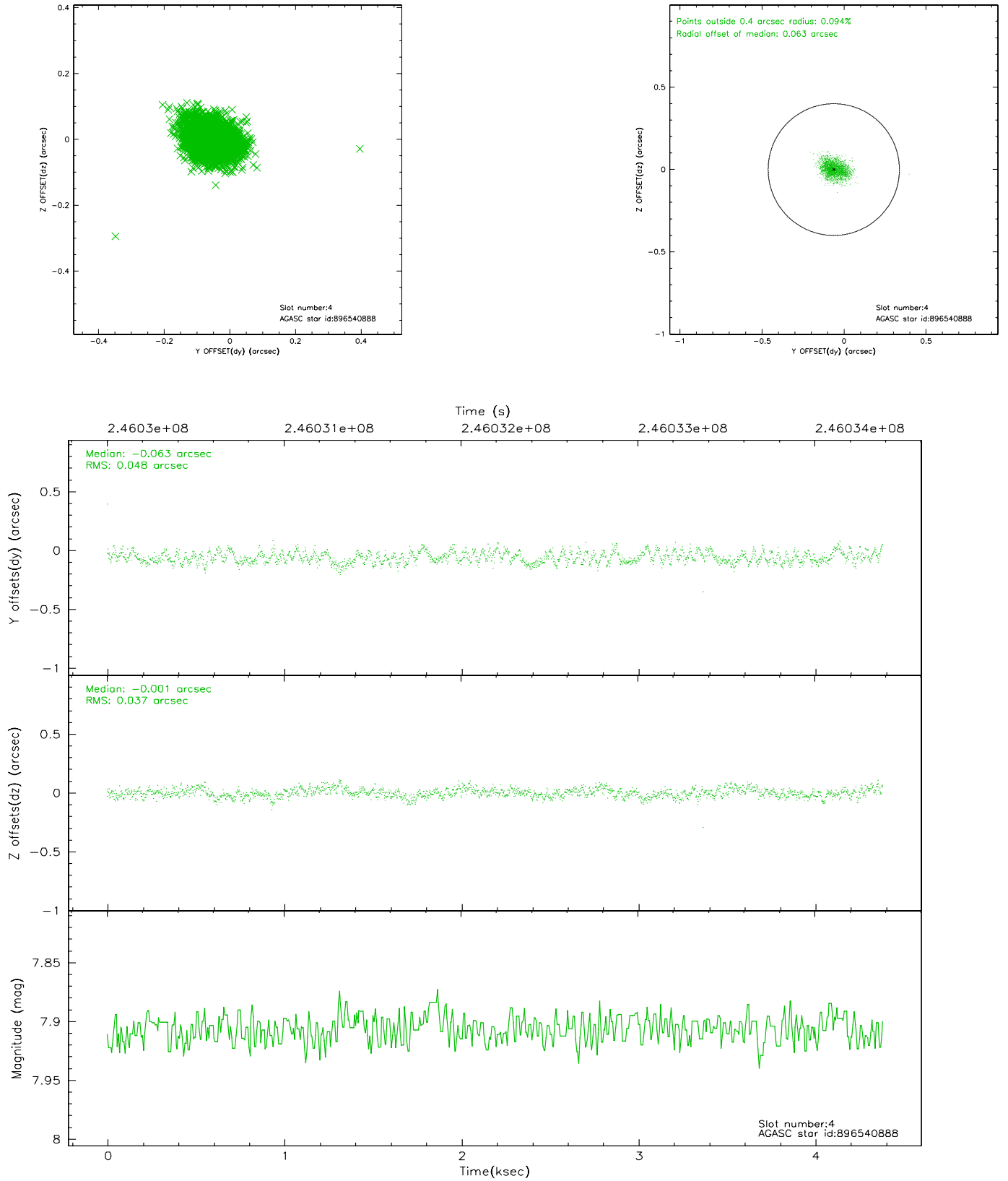


## 2.4 Star Slots

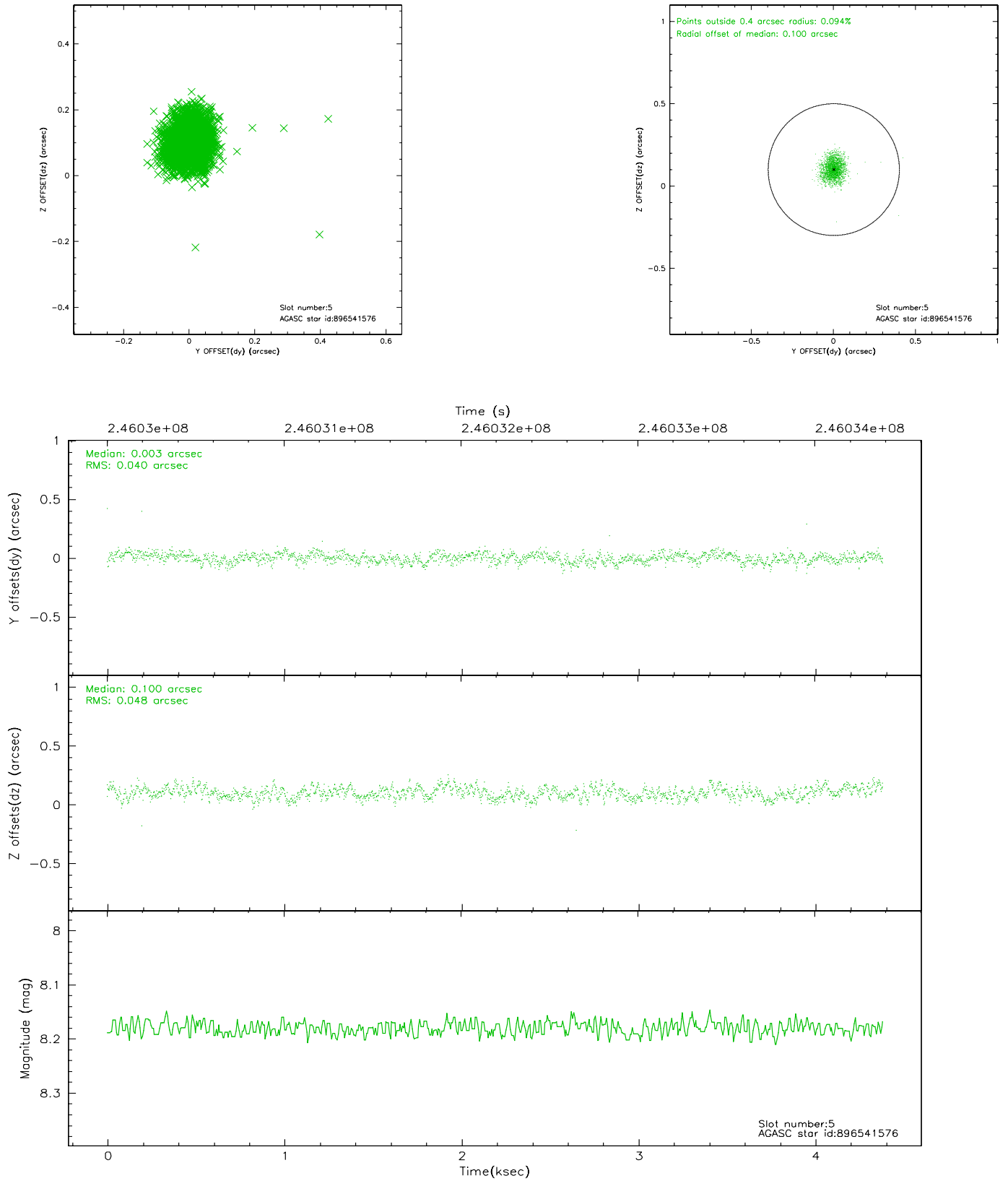
### 2.4.1 Slot 3



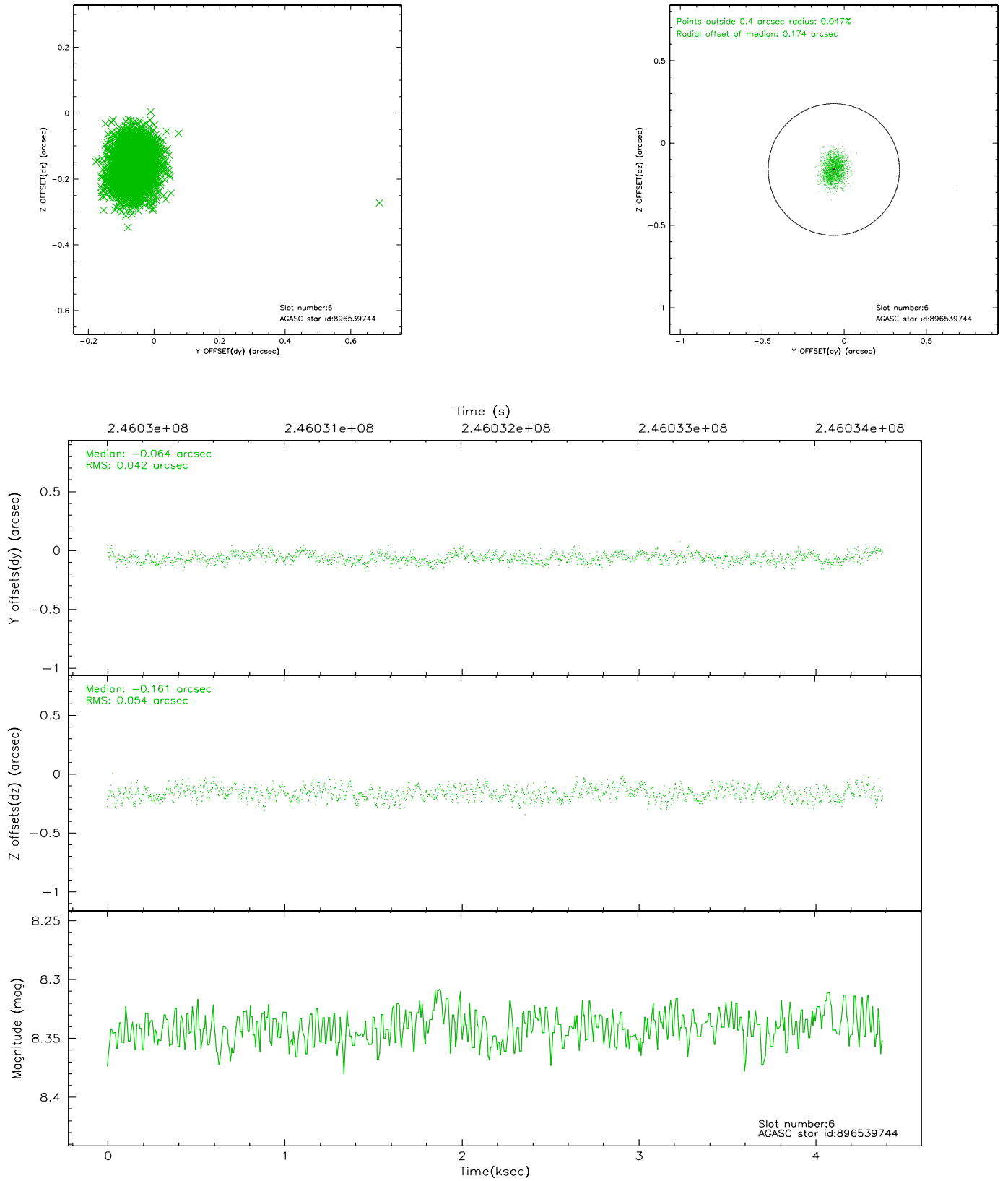
## 2.4.2 Slot 4



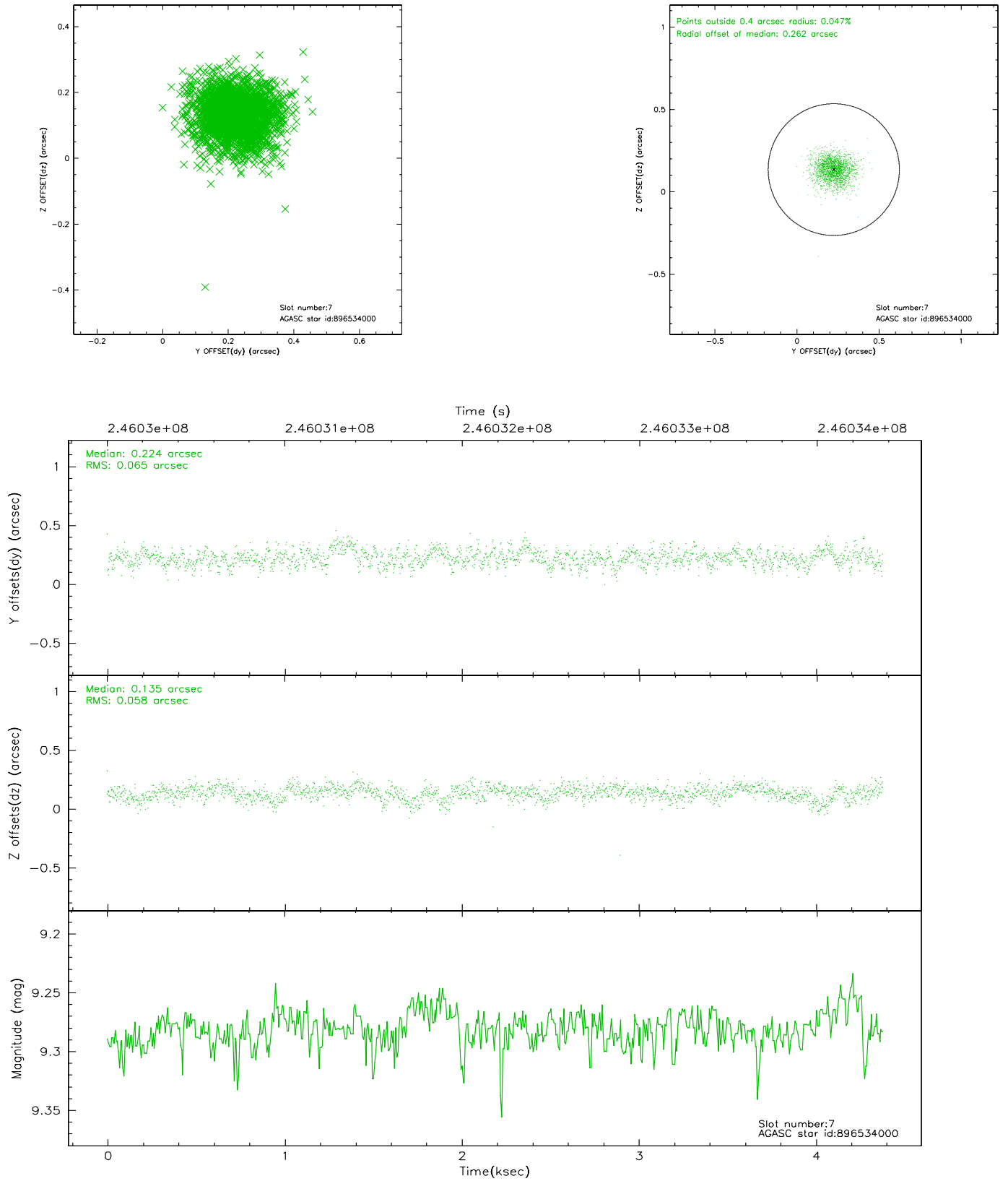
### 2.4.3 Slot 5



## 2.4.4 Slot 6

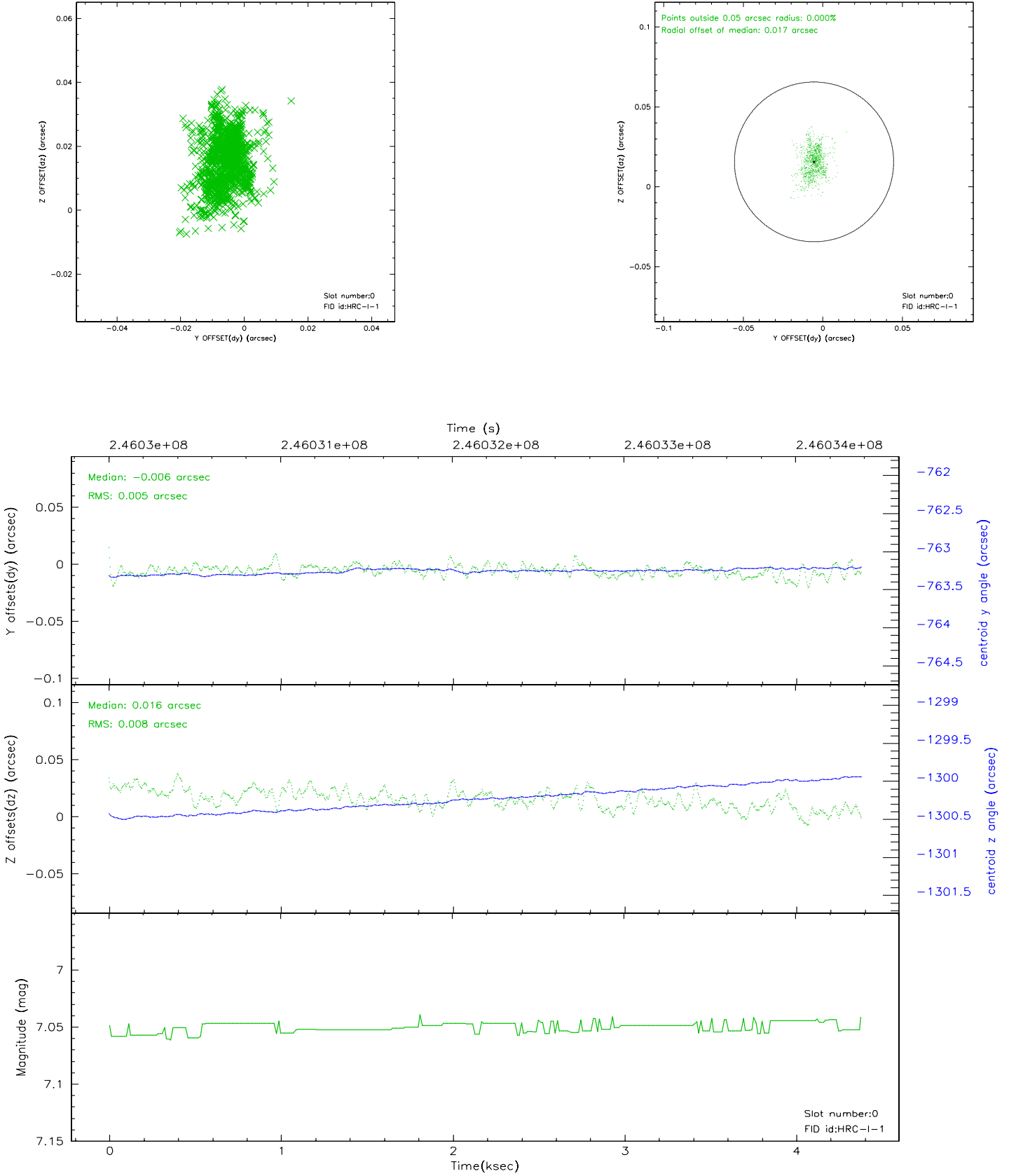


## 2.4.5 Slot 7

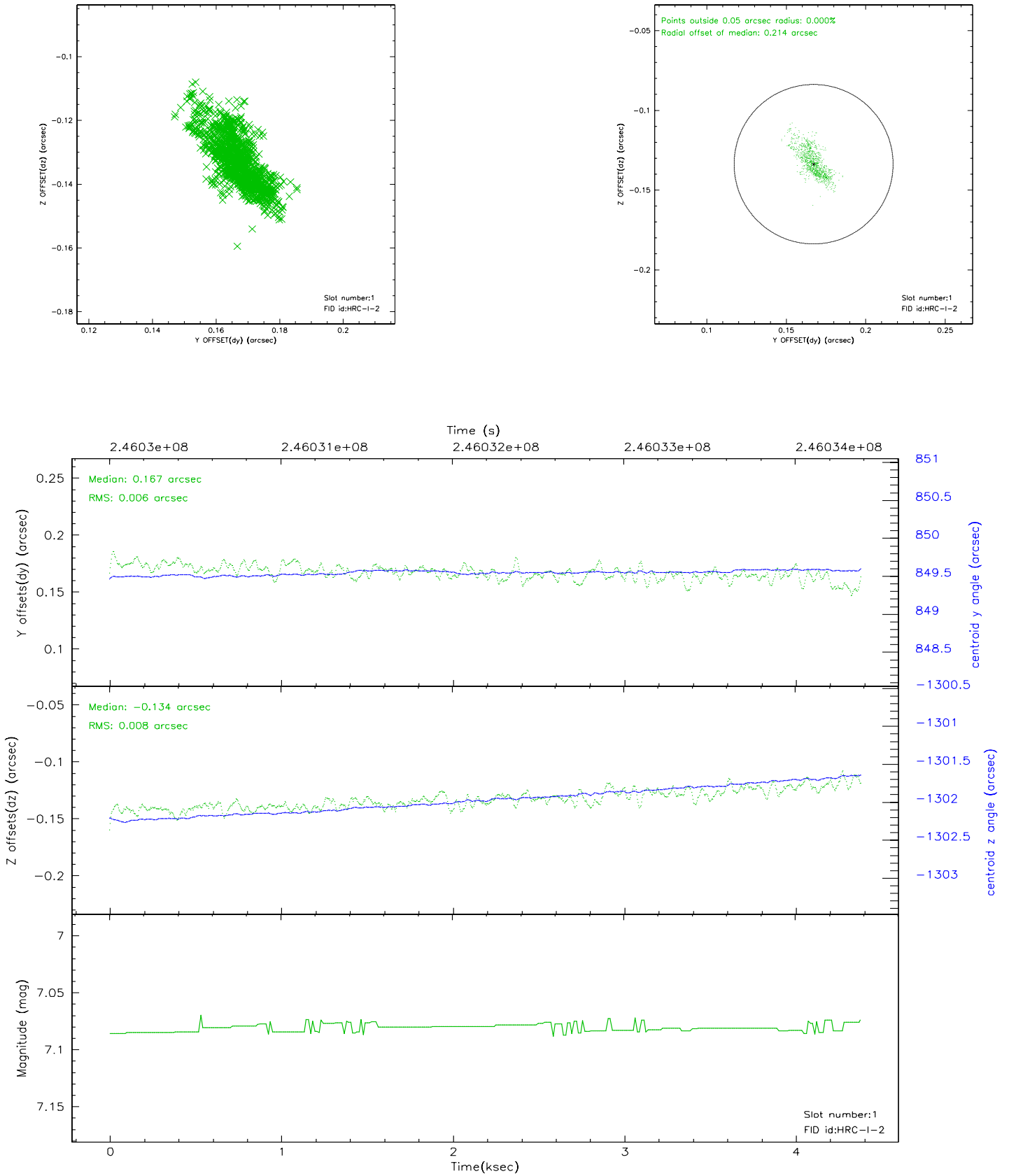


## 2.5 FID Slots

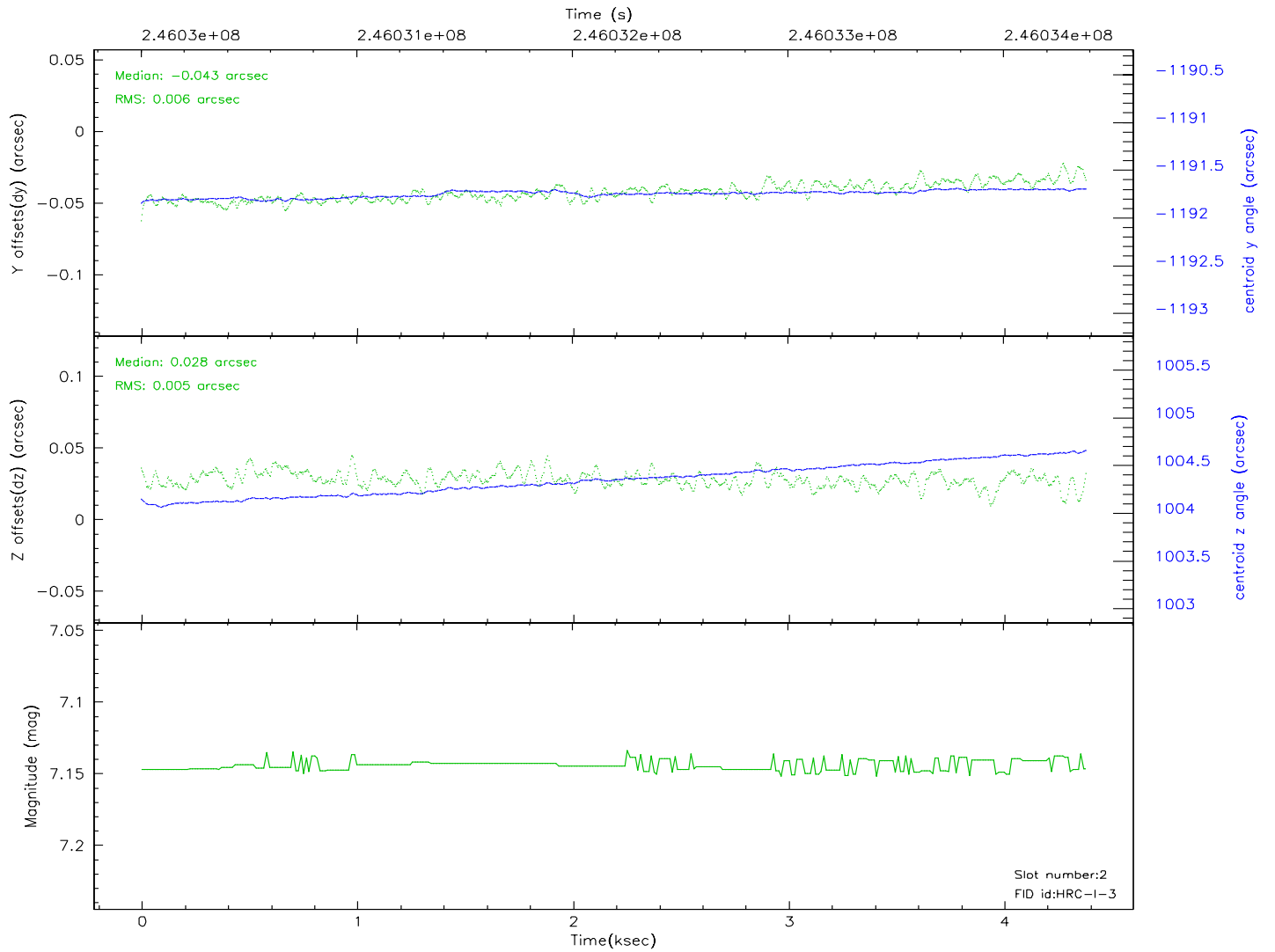
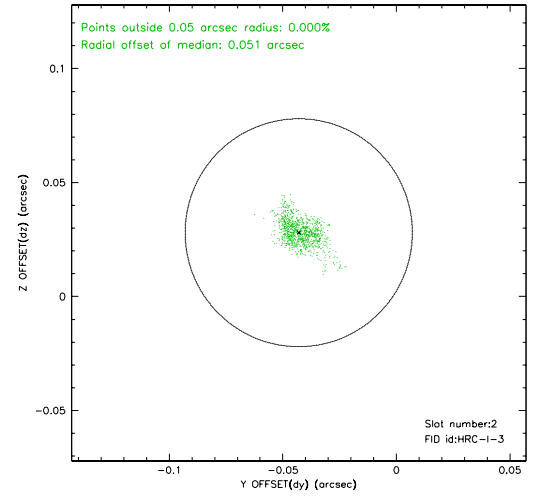
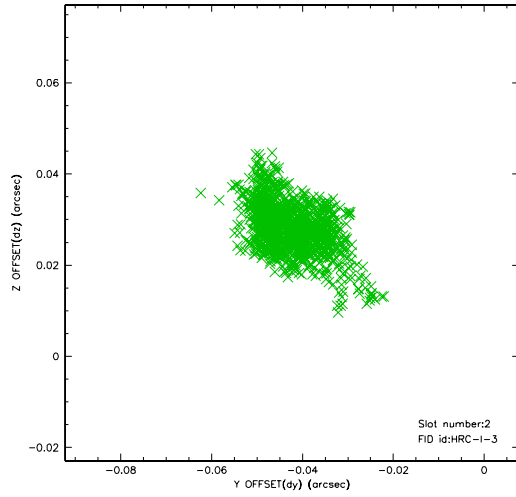
### 2.5.1 Slot 0



## 2.5.2 Slot 1

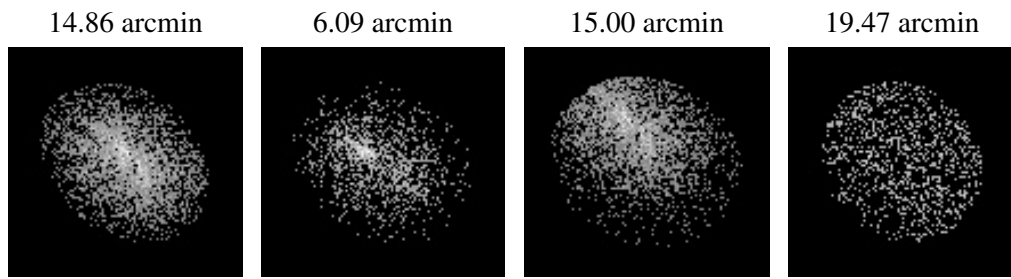


### 2.5.3 Slot 2





### 3 Point Sources



# A Summary

## A.1 Status

V&V Scientist	Jen Lauer
V&V Date (YYYY-MM-DD)	2007.12.07
V&V Edition	1
V&V Disposition and Status	OK
V&V Charge Time	4.382131

## A.2 Comments

Window constraint met.

The current observation has been reprocessed as part of Repro III ('C' supplement) the purpose of which is to update all HRC-I ObsIDs since Jan 2000 to the latest calibrations available for that configuration. Specifically, we are updating the DEGAP solution and the Gain Maps applied. For more information see the Repro IIIC web page at

<http://asc.harvard.edu/cda/repro3.html#IIIC>

and the associated links.