

V&V Reference Report

L2 ASCDS Version : 7.6.7.1

Observation 5512 - L2 Version 002
Chandra X-Ray Center

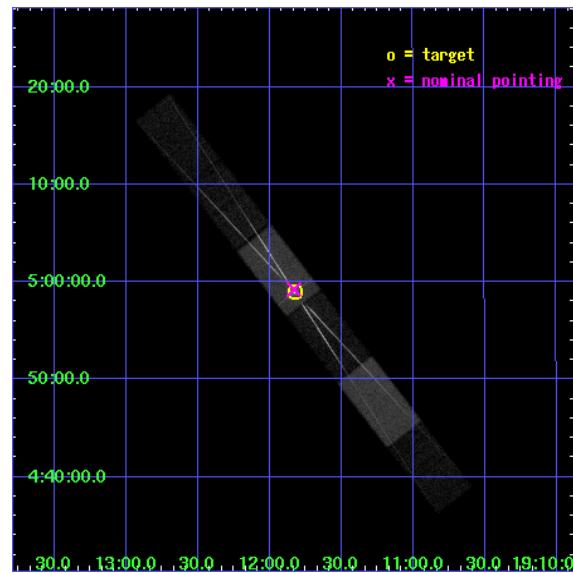
L2 Processing Date : Mar 18 2006

Contents

1	Front	2
2	OBI	3
2.1	OBI	3
2.1.1	Images	3
2.1.2	Bias	3
2.1.3	Parameters	4
2.1.4	Events	4
2.2	Compared Parameters	5
2.3	Aspect	6
2.4	Star Slots	9
2.4.1	Slot 3	9
2.4.2	Slot 4	10
2.4.3	Slot 5	11
2.4.4	Slot 6	12
2.4.5	Slot 7	13
2.5	FID Slots	14
2.5.1	Slot 0	14
2.5.2	Slot 1	15
2.5.3	Slot 2	16
3	Gratings	17
3.1	HEG Arm	17
3.2	MEG Arm	19
A	Summary	21
A.1	Status	21
A.2	Comments	21

1 Front

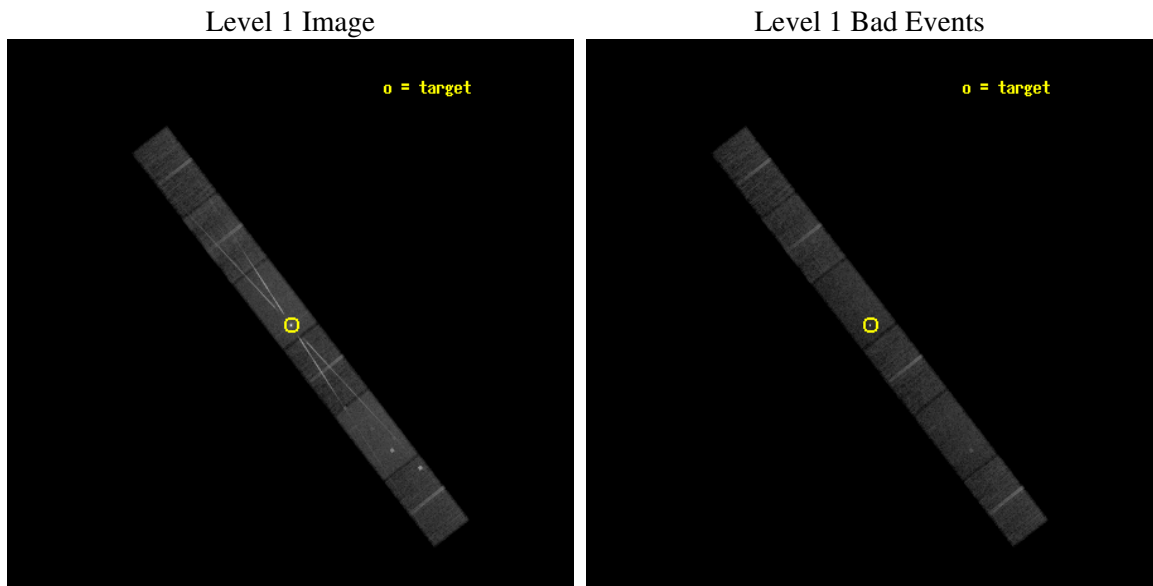
seq_num	400442
obs_id	5512
title	Detailed Studies of the Jets in SS 433
observer	Dr. Claude Canizares
object	SS 433
dtcycle	0
cycle	P
ra_targ	287.95625
dec_targ	4.982778
ra_nom	287.95760170927
dec_nom	4.9872260188245
roll_nom	232.07158647017
revision	2
ontime	20165.40013355
livetime	19715.878112583
ontime4	20165.40013355
ontime5	20165.40013355
ontime6	20165.40013355
ontime7	20165.40013355
ontime8	20165.40013355
ontime9	20165.40013355
l2events	196019



2 OBI

2.1 OBI

2.1.1 Images

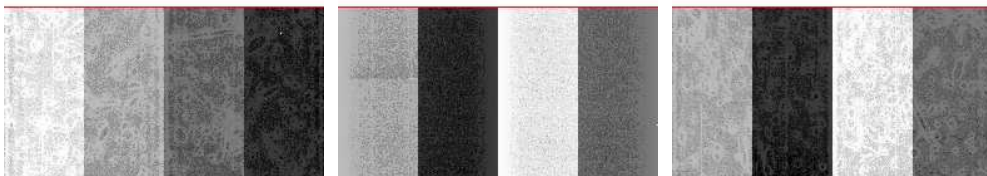


2.1.2 Bias

Chip 4

Chip 5

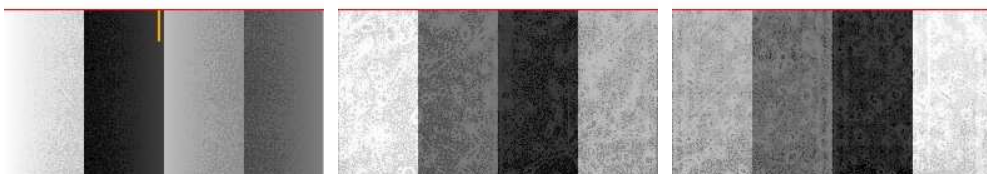
Chip 6



Chip 7

Chip 8

Chip 9



2.1.3 Parameters

obi_num	1
ascdsver	7.6.7.1
caldsver	3.2.1
date	2006-03-18T22:20:14
revision	2

sched_exp_time	20000.000000
ontime	21523.413156241
ontime4	21523.413156241
ontime5	21523.413156241
ontime6	21525.254176348
ontime7	21523.413156241
ontime8	21525.254176348
ontime9	21525.254176348
l1events	690494

2.1.4 Events

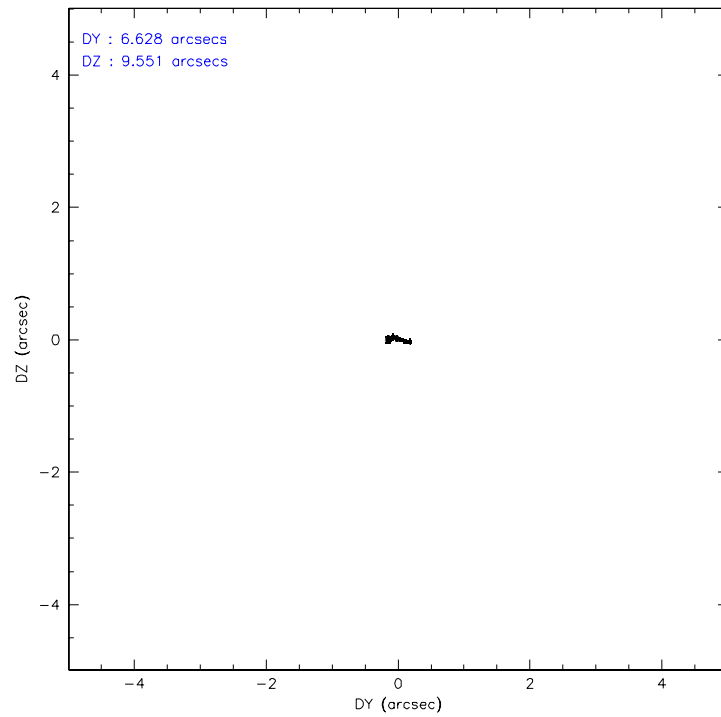
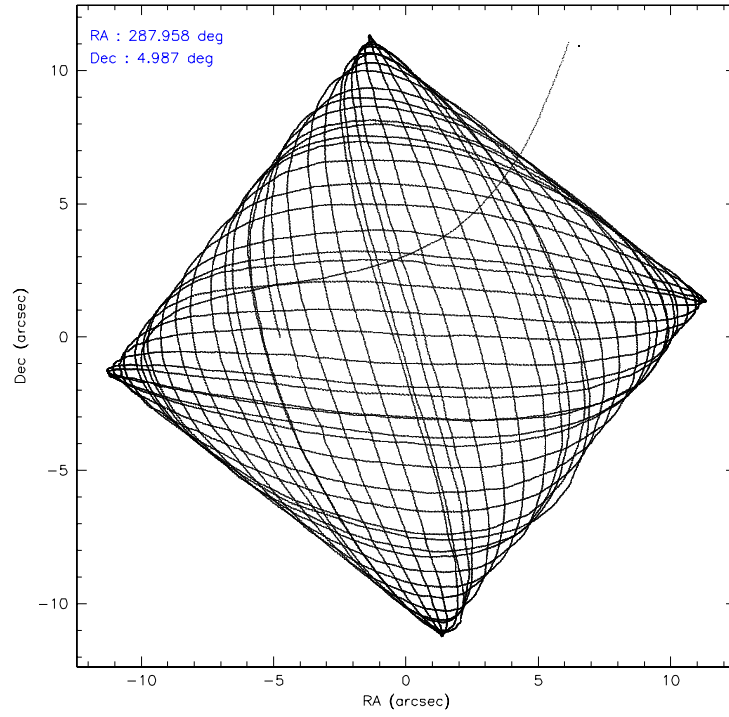
	ccd 4	ccd 5	ccd 6	ccd 7	ccd 8	ccd 9
level 1 events	98104	128731	111177	154155	112956	85371
rejected events	83499	73461	75666	75806	83373	74251
rejected %	85%	57%	68%	49%	73%	86%

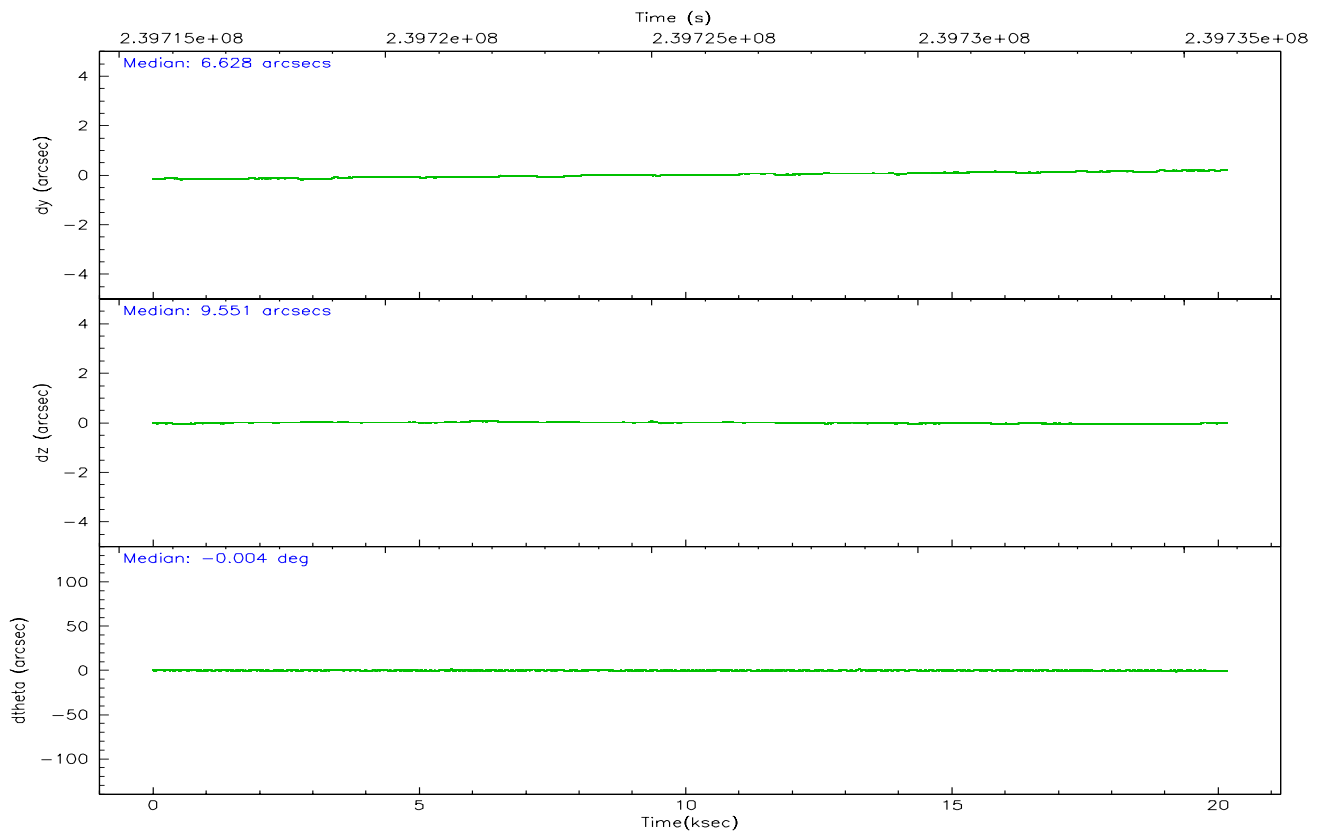
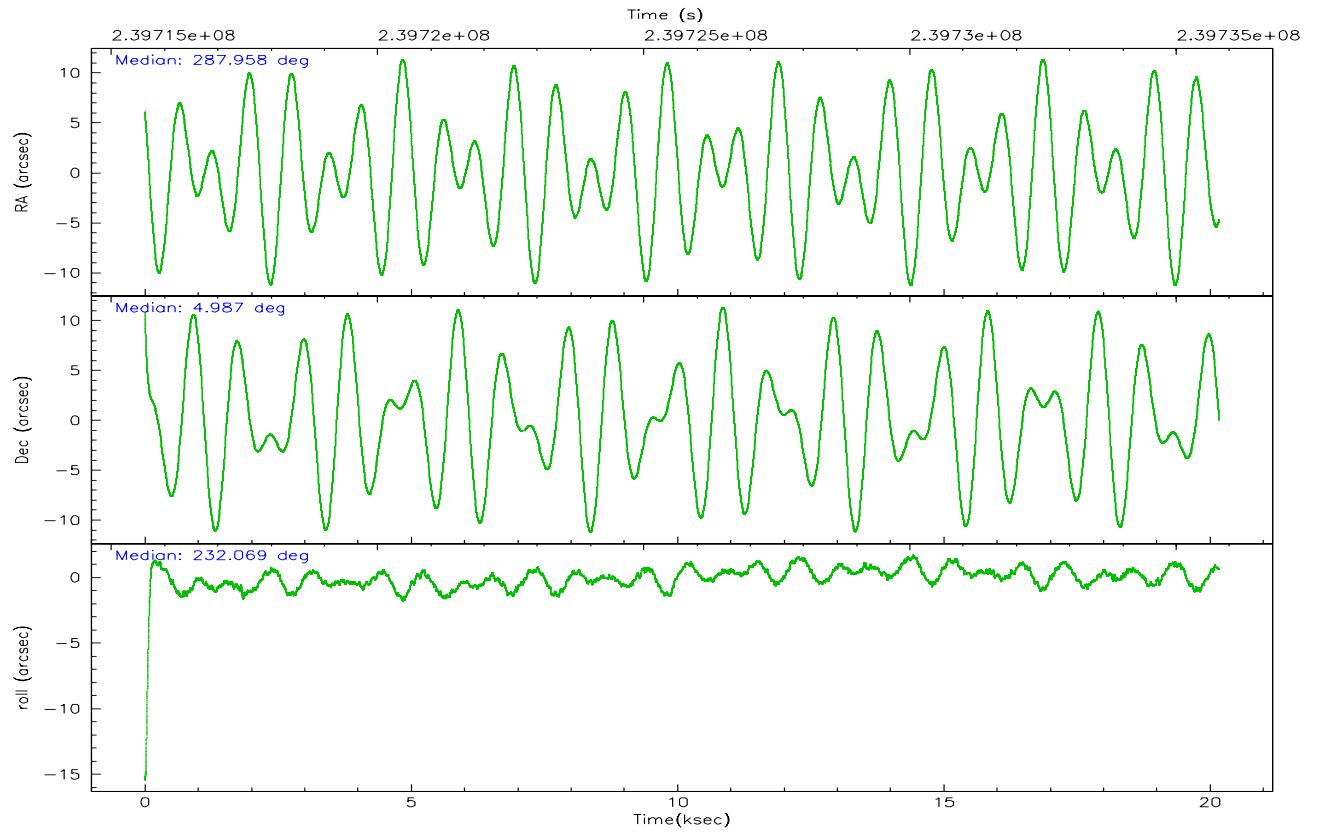
	ccd 4	ccd 5	ccd 6	ccd 7	ccd 8	ccd 9
grade 0 events	8970	6238	22826	9343	12924	5207
	9%	4%	20%	6%	11%	6%
grade 1 events	78	544	100	252	73	44
	0%	0%	0%	0%	0%	0%
grade 2 events	2411	17218	5541	19779	5985	2159
	2%	13%	4%	12%	5%	2%
grade 3 events	1264	2022	2275	6372	2911	1210
	1%	1%	2%	4%	2%	1%
grade 4 events	1165	1944	2237	6334	2757	1166
	1%	1%	2%	4%	2%	1%
grade 5 events	3374	6322	3805	9403	4682	3821
	3%	4%	3%	6%	4%	4%
grade 6 events	1806	31697	3670	39595	6410	2054
	1%	24%	3%	25%	5%	2%
grade 7 events	79036	62746	70723	63077	77214	69710
	80%	48%	63%	40%	68%	81%

2.2 Compared Parameters

Parameter	Planned	Actual	Parameter	Planned	Actual
Instrument	ACIS	ACIS	Obspar format version number	6	6
Detector	ACIS-456789	ACIS-456789	Obspar file type	PREDICTED	ACTUAL
Grating	HETG	HETG	Obspar update status	NONE	UPDATED
Data mode	FAINT	FAINT	On-chip summing requested	N	N
Observation mode	POINTING	POINTING	Subarray requested	CUSTOM	CUSTOM
Pointing RA	287.961005	287.95760170927	Subarray start row	1	1
Pointing Dec	5.014213	4.987226018824477	Subarray row count	542	542
Pointing Roll	231.914668	232.0715864701711	Alternating exposures requested	N	N
Window start time	233971264.184000	233971264.184000	Primary exposure time	0.000000	1.8
Window stop time	235094464.184000	235094464.184000			
SIM focus pos (mm)	-0.684267	-0.6828225247311905			
SIM defocus (mm)	0	0.001444936568705701			
SIM translation stage pos (mm)	-184.532523	-184.52811429679			
SIM translation stage offset (mm)	-5.6	-5.604408286217847			
Observation start time	239715802.184000	239714213.81618			
Observation start date	2005-08-06T11:42:18	2005-08-06T11:16:53			
Observation end time	239735802.184000	239736808.91722			
Observation end date	2005-08-06T17:15:38	2005-08-06T17:33:28			
Read mode	TIMED	TIMED			

2.3 Aspect



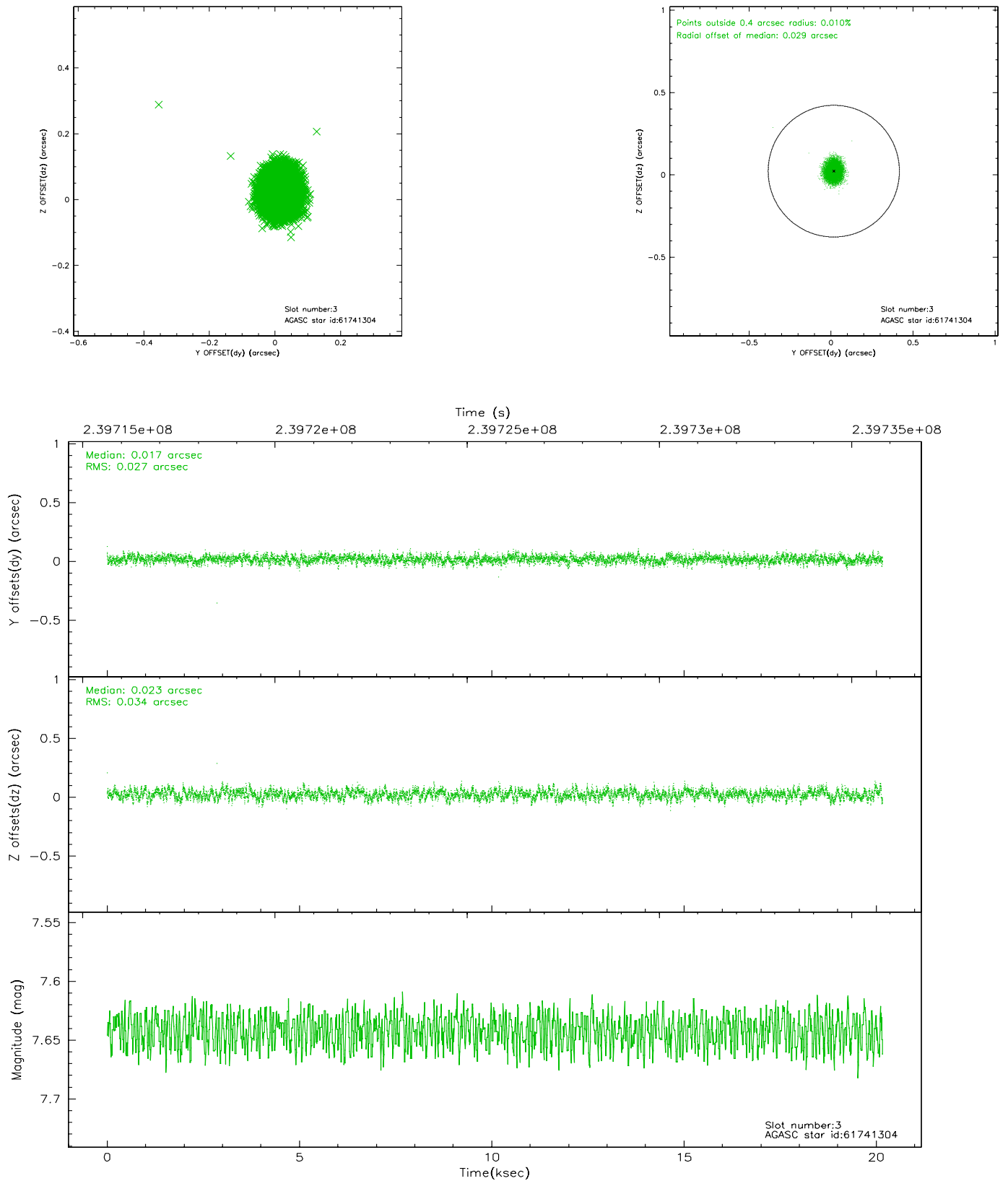


Slot Statistics

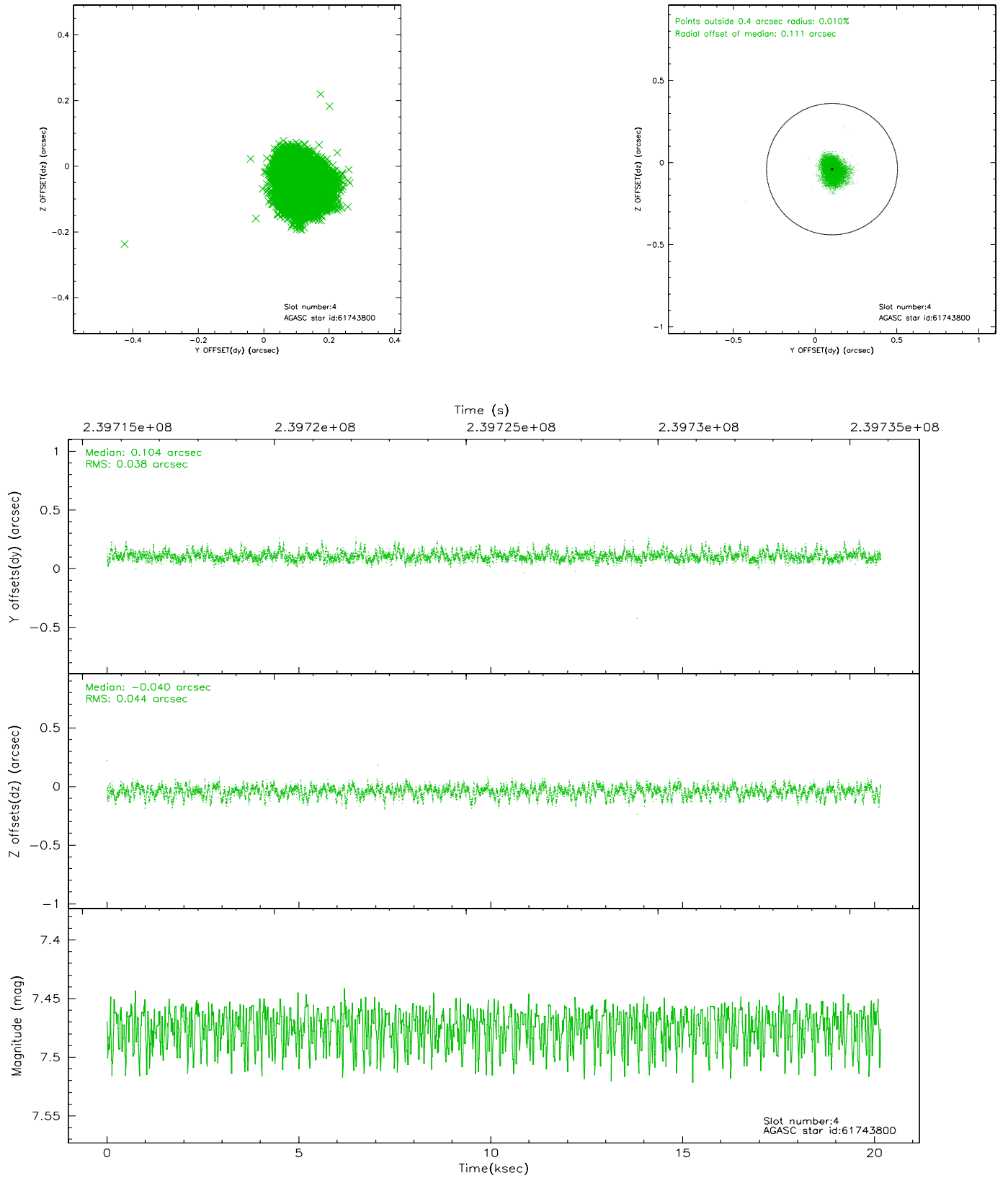
slot	status	id	mag	n_pts	med_dy	med_dz	dr1	dr2	ra	dec	mean_y	mean_z
0	FID	ACIS-S-2	7.09	4920	-0.076	-0.076	0.007	0.012	0.000000	0.000000	-759.05	-1846.40
1	FID	ACIS-S-4	7.19	4920	0.092	0.057	0.005	0.009	0.000000	0.000000	2154.30	62.00
2	FID	ACIS-S-5	7.22	4920	-0.047	0.027	0.006	0.010	0.000000	0.000000	-1811.63	55.84
3	GUIDE	61741304	7.64	9839	0.017	0.023	0.046	0.075	287.957418	5.377327	-1020.83	-816.15
4	GUIDE	61743800	7.47	9840	0.104	-0.040	0.061	0.102	287.776811	5.274666	-330.52	-1098.00
5	GUIDE	61744976	7.58	9839	-0.027	-0.004	0.042	0.070	288.430364	5.306675	-1866.88	674.51
6	GUIDE	61745024	7.61	9839	-0.144	0.035	0.047	0.075	288.156168	5.297362	-1234.05	-77.86
7	GUIDE	61738240	7.23	9839	0.046	-0.010	0.039	0.068	287.996556	4.354861	1789.66	1565.00

2.4 Star Slots

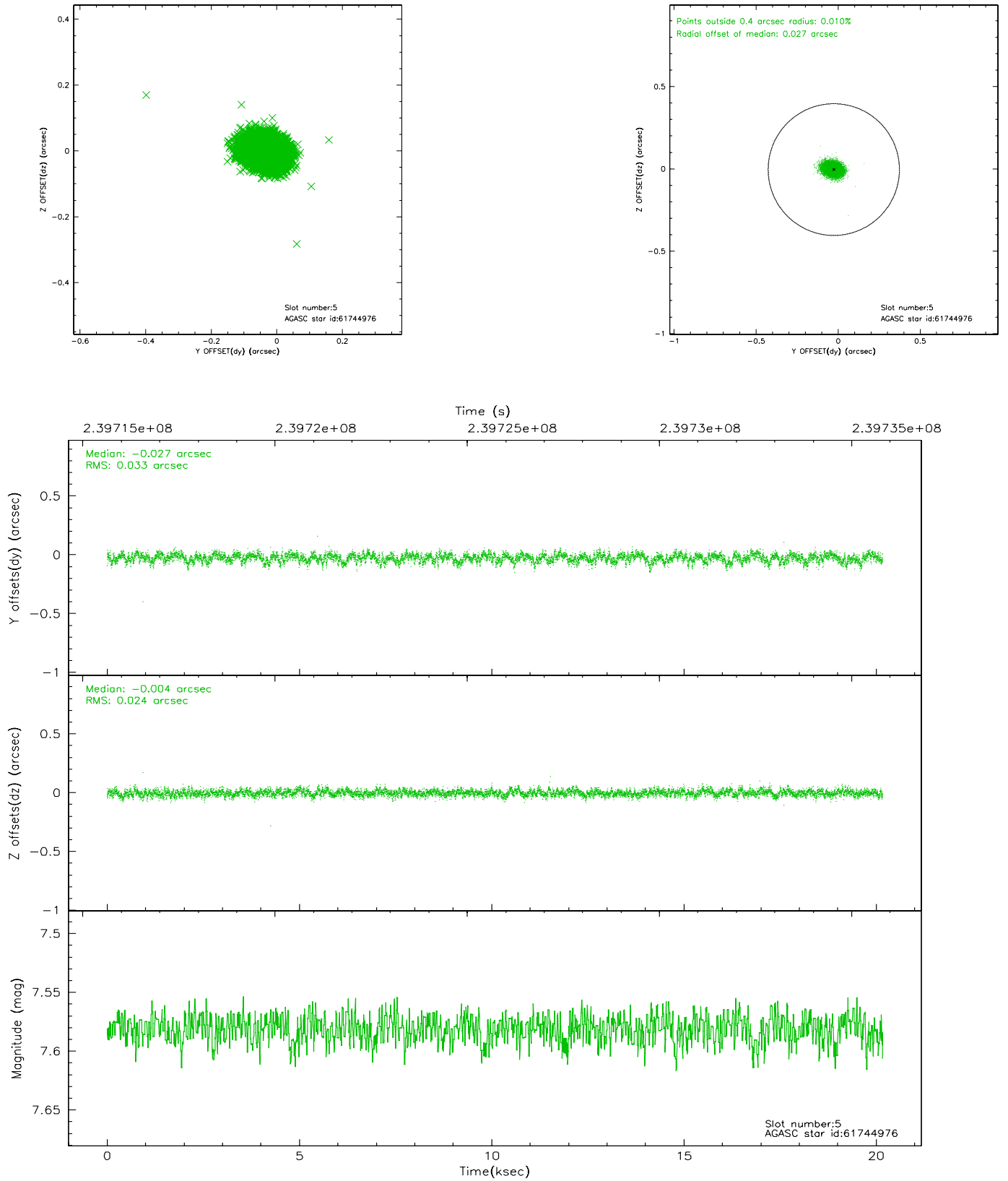
2.4.1 Slot 3



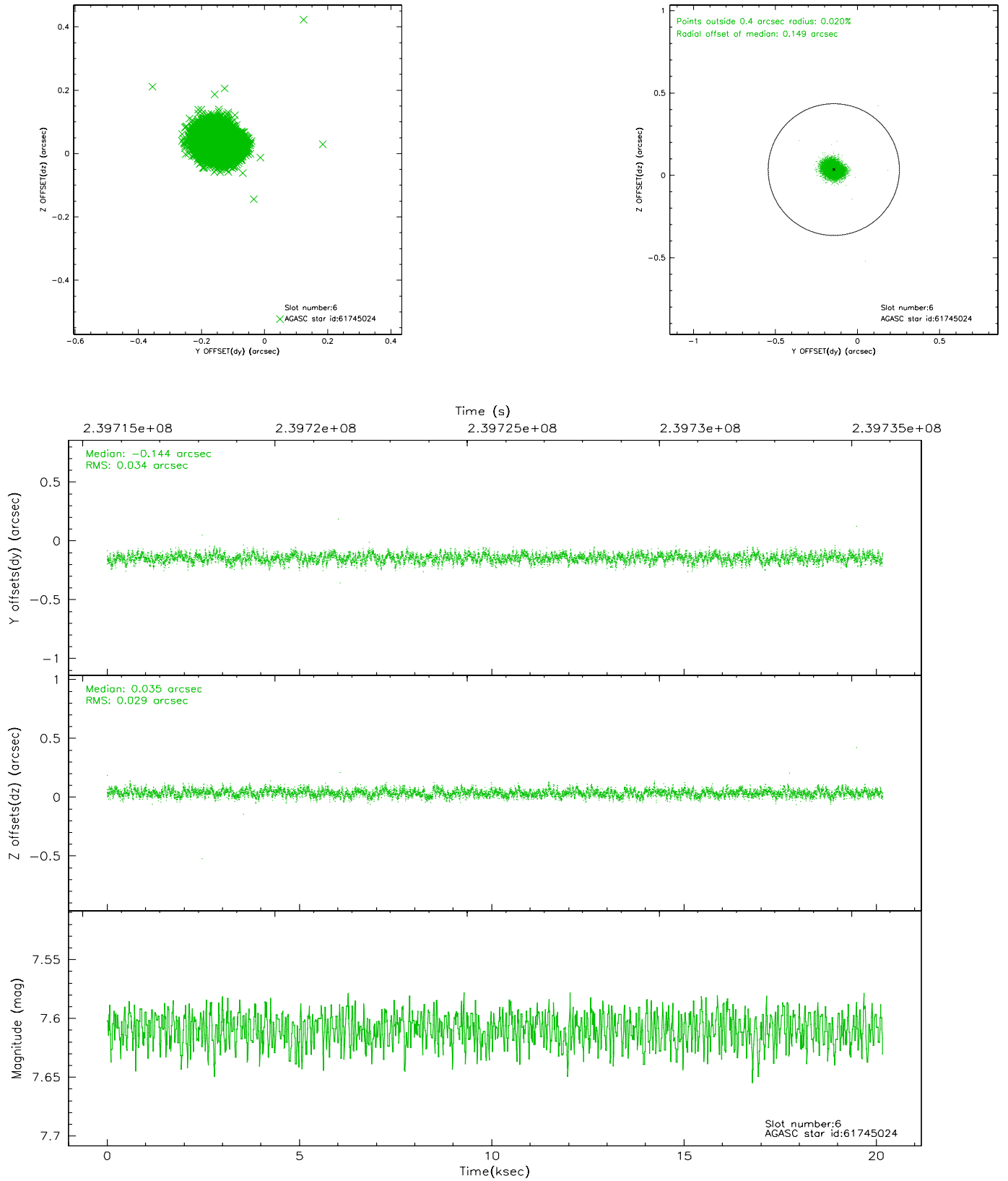
2.4.2 Slot 4



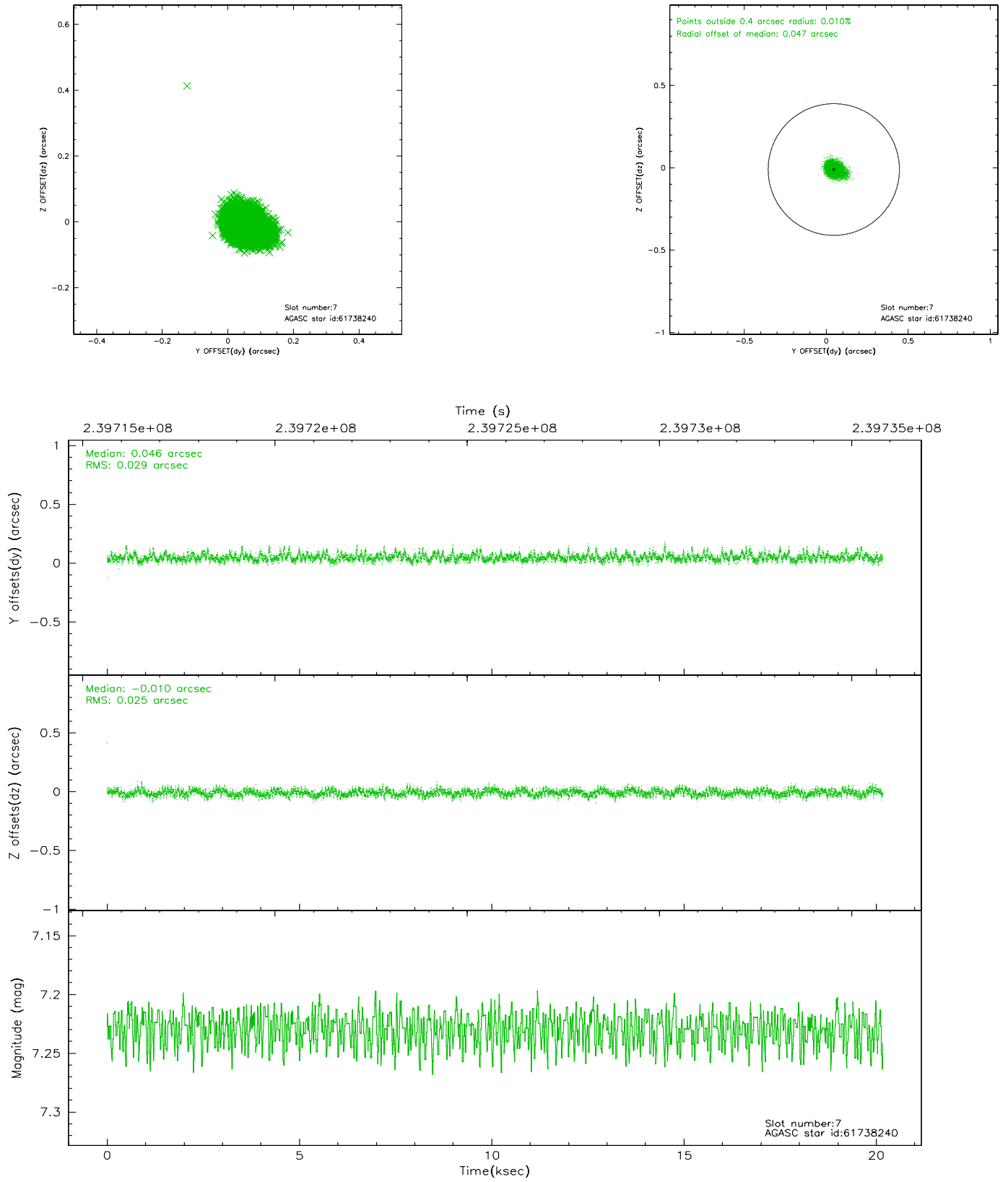
2.4.3 Slot 5



2.4.4 Slot 6

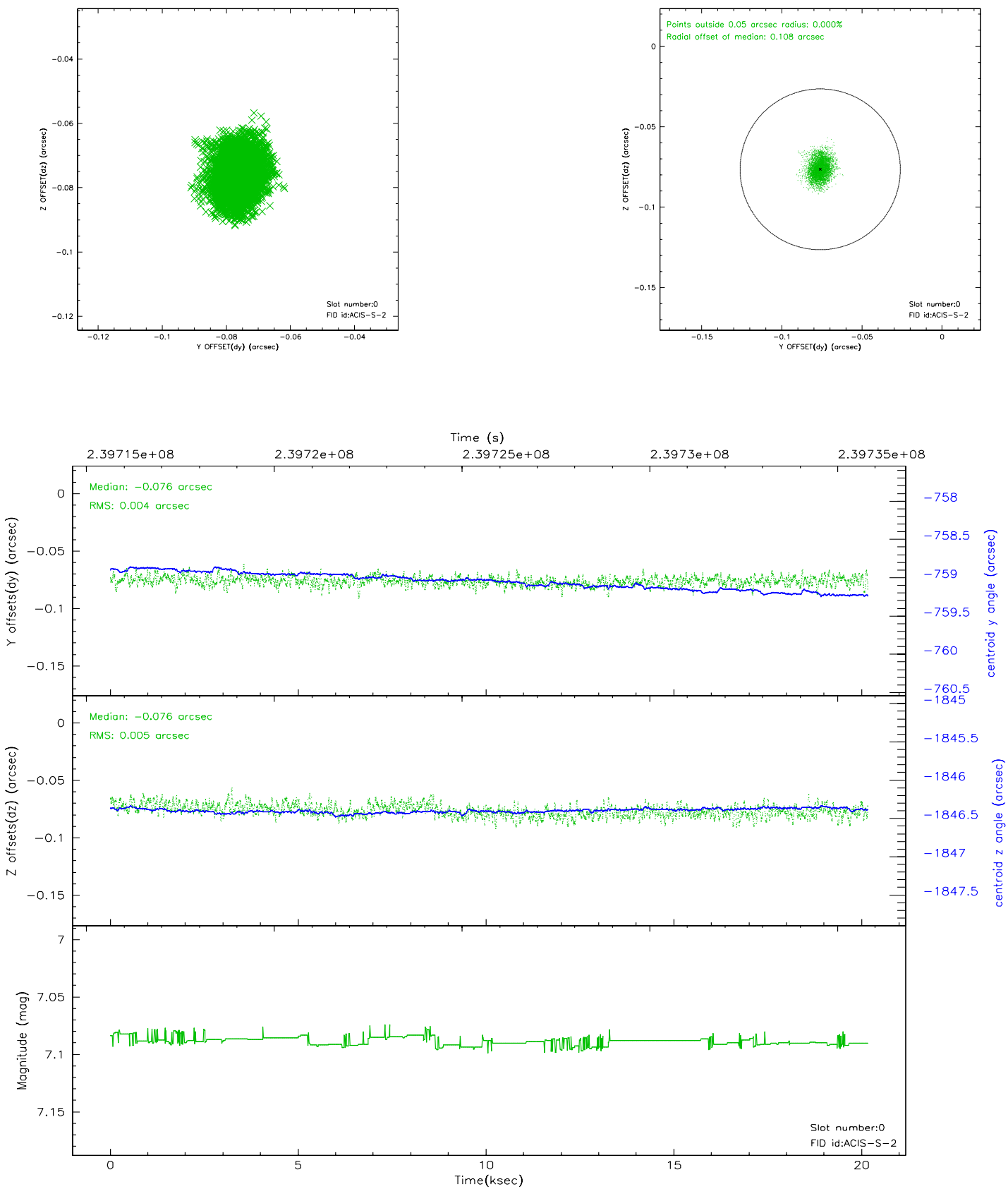


2.4.5 Slot 7

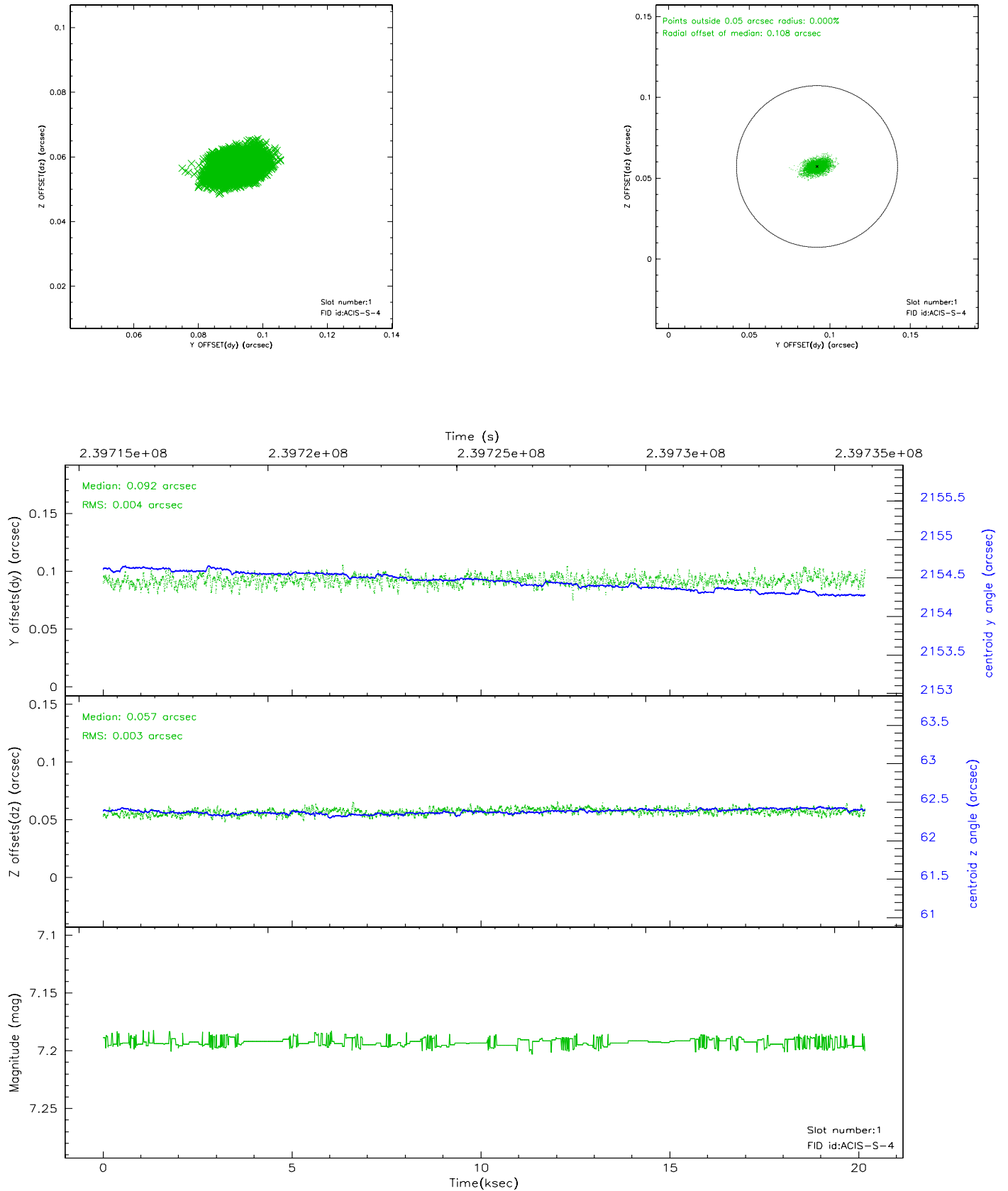


2.5 FID Slots

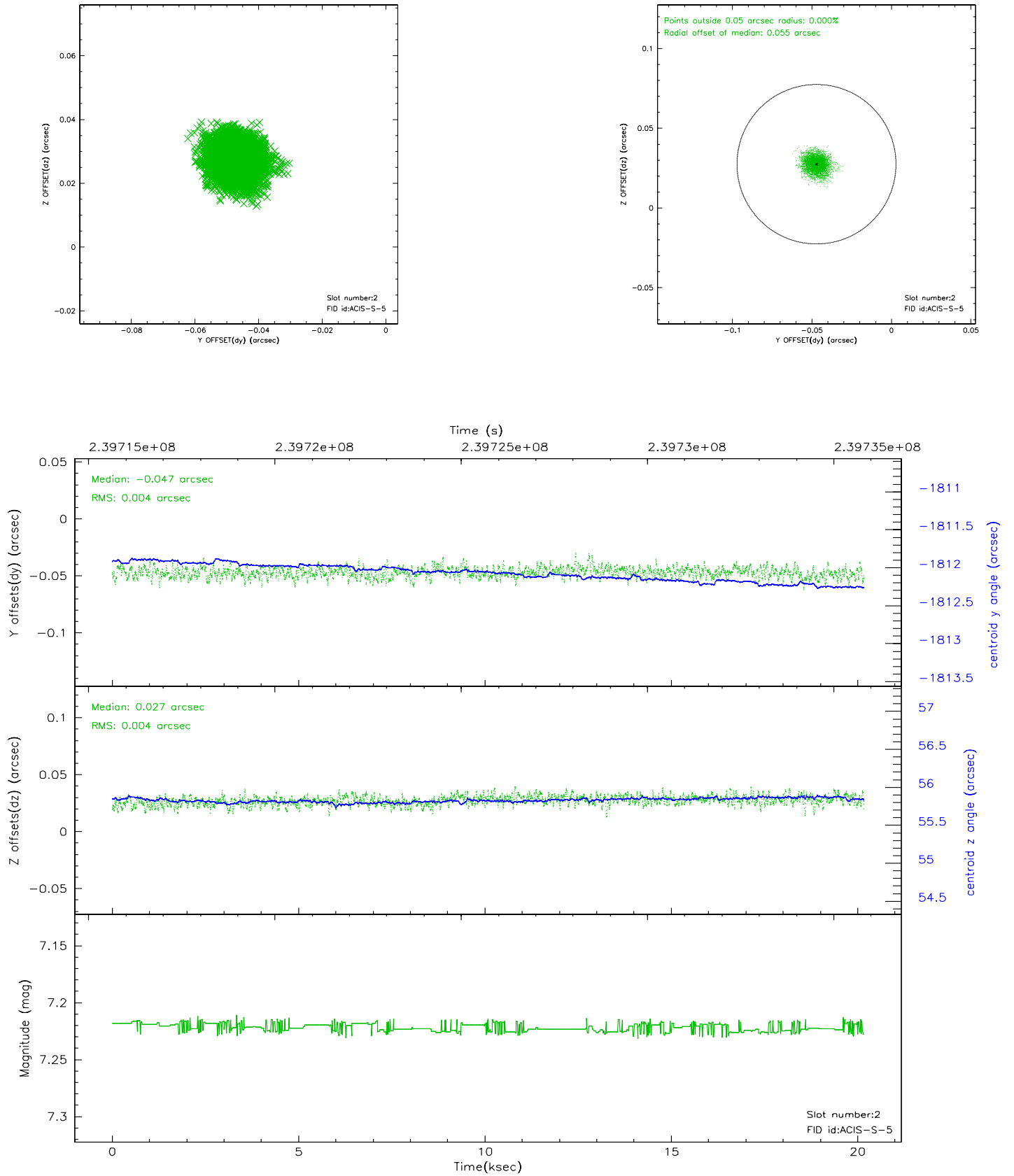
2.5.1 Slot 0



2.5.2 Slot 1

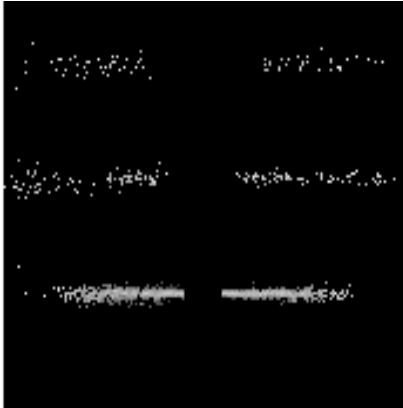


2.5.3 Slot 2

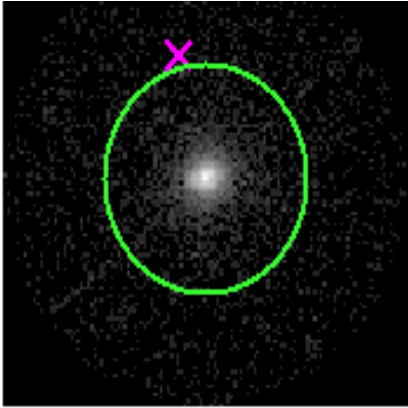


3 Gratings

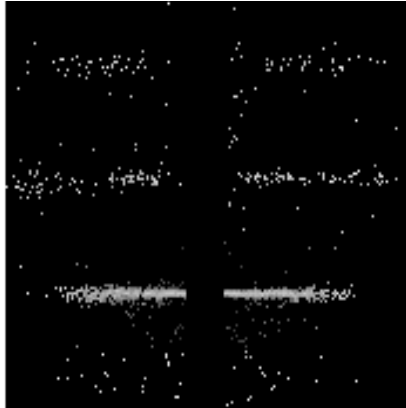
3.1 HEG Arm



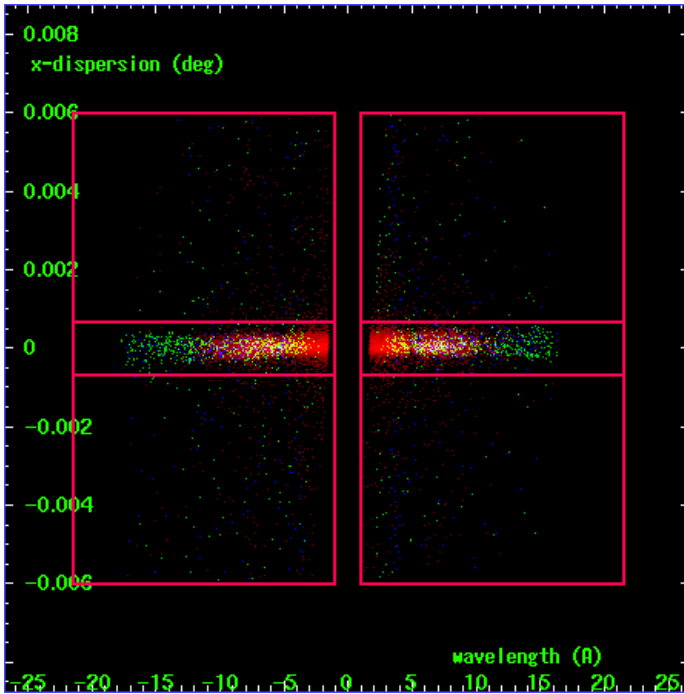
HEG Order Sort 123



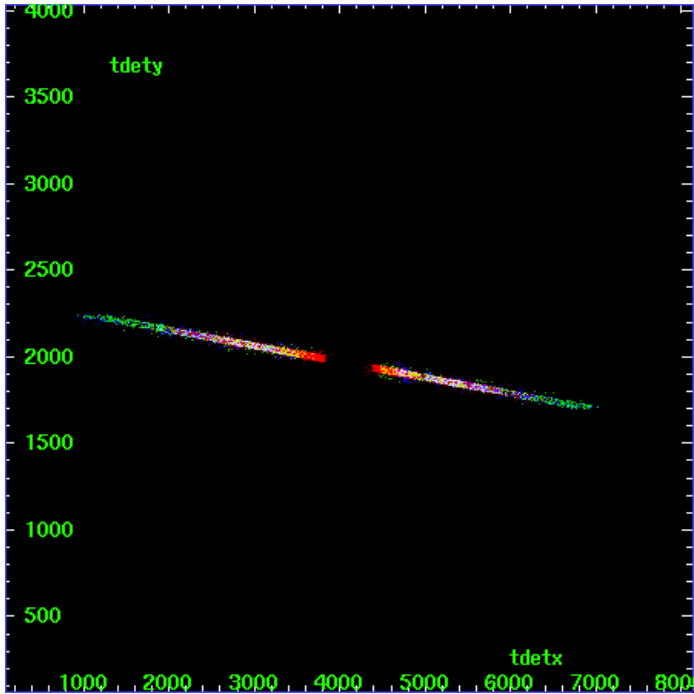
HEG Zero Order



HEG Order Sort ALL

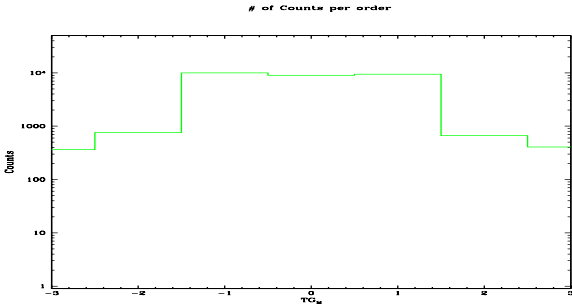


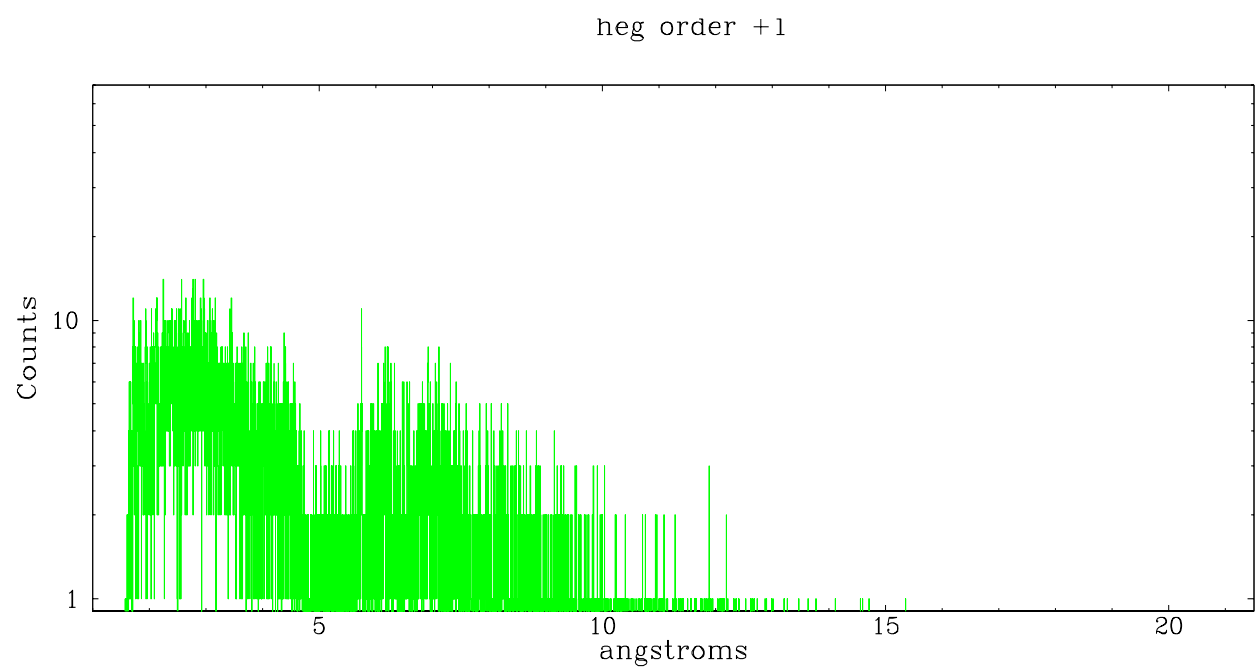
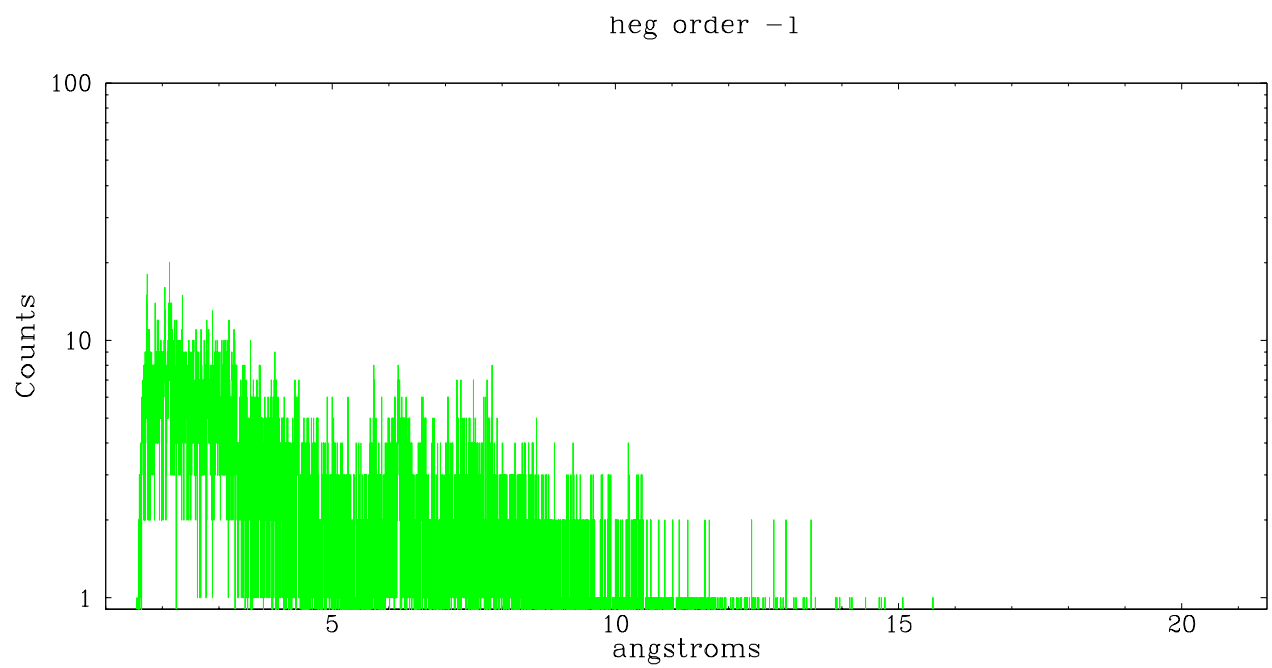
Spot Image HEG



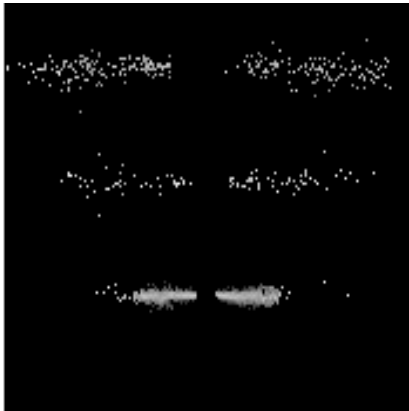
Full Detector HEG

	order -3	order -2	order -1	order 0	order 1	order 2	order 3
Events	363	754	9950	8968	9415	665	408

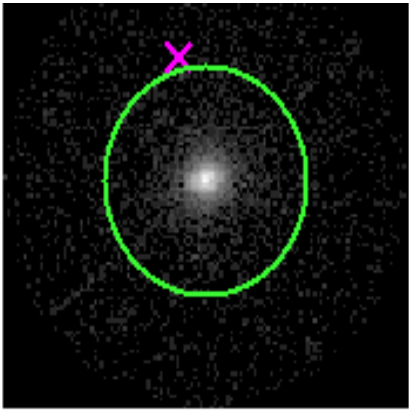




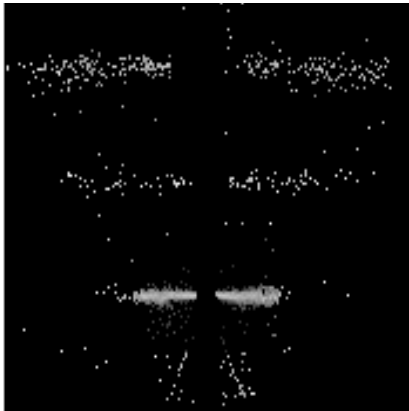
3.2 MEG Arm



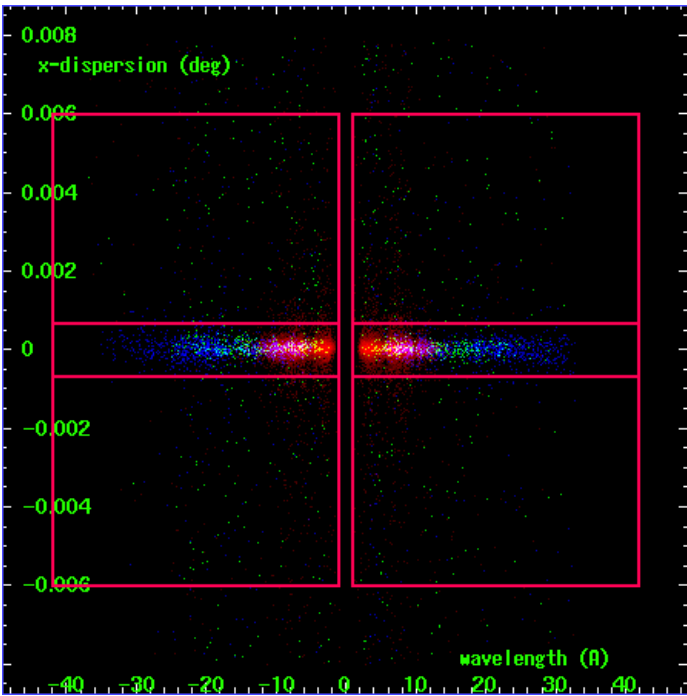
MEG Order Sort 123



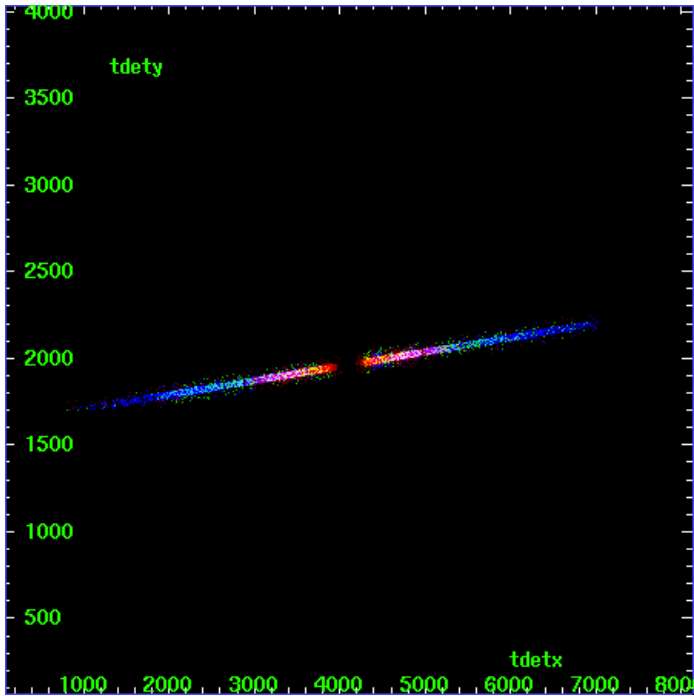
MEG Zero Order



MEG Order Sort ALL

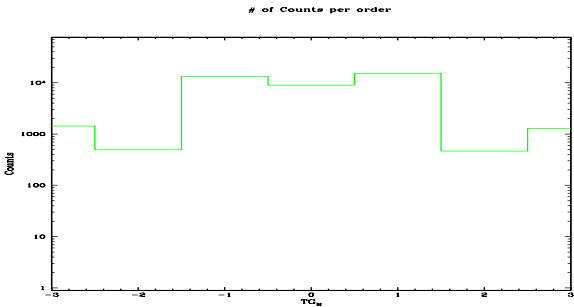


Spot Image MEG

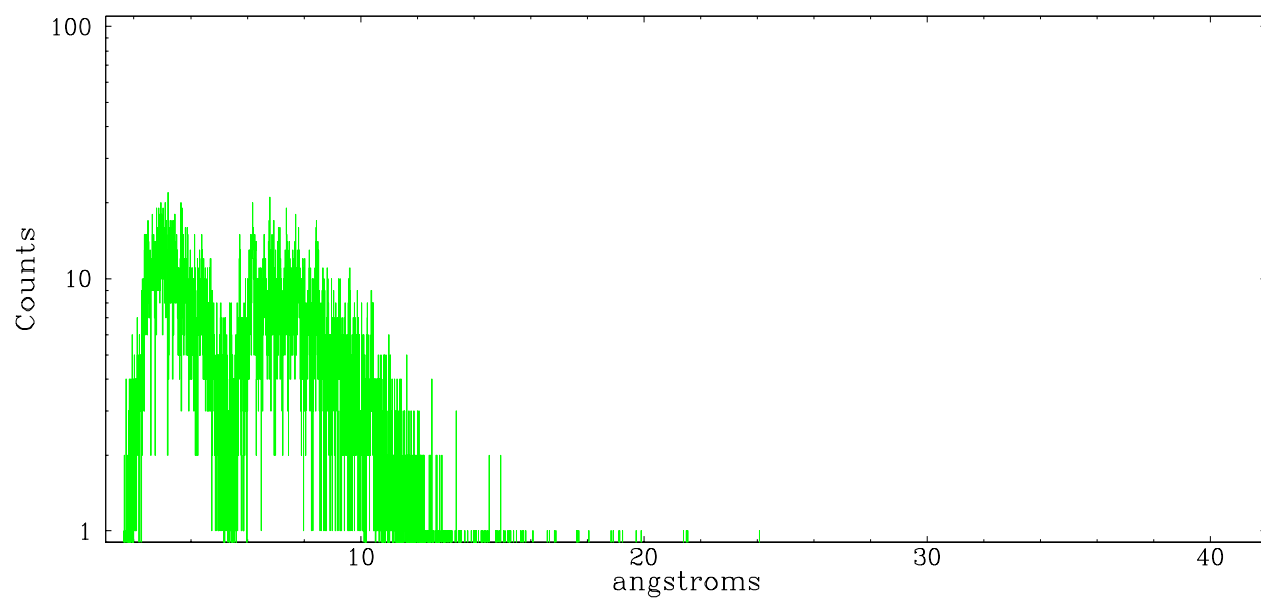


Full Detector MEG

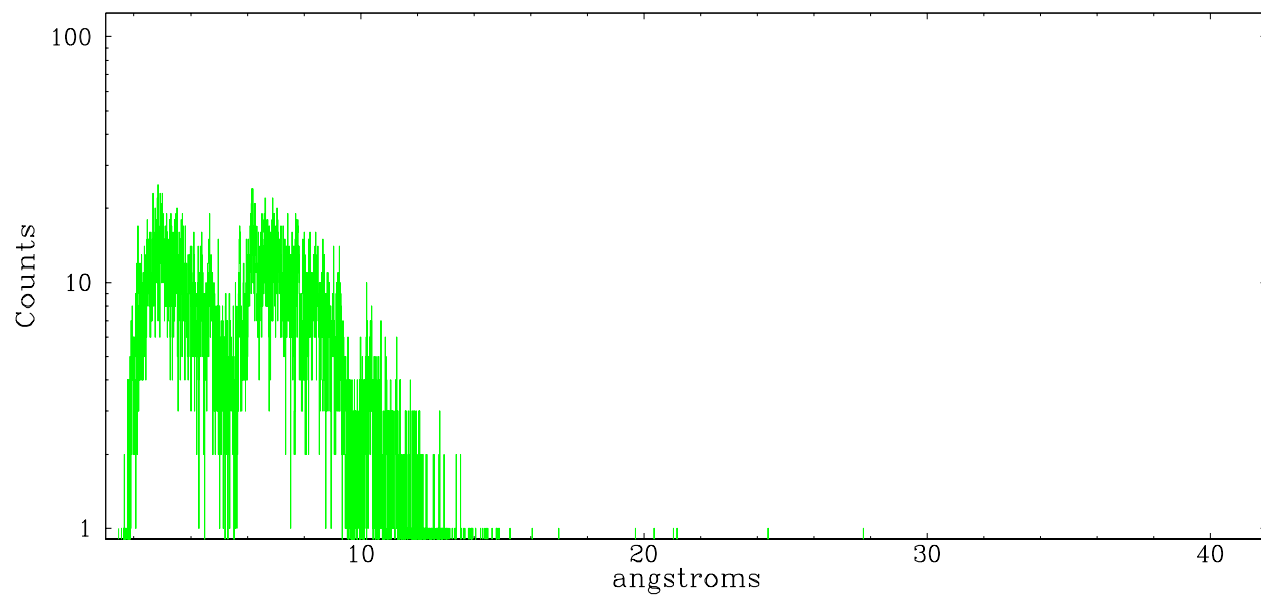
	order -3	order -2	order -1	order 0	order 1	order 2	order 3
Events	1434	494	13274	8968	15378	464	1282



meg order -1



meg order +1



A Summary

A.1 Status

V&V Scientist	Joy Nichols
V&V Date (YYYY-MM-DD)	2006.04.05
V&V Edition	1
V&V Disposition and Status	OK
V&V Charge Time	20.1654001

A.2 Comments

Charge time:

New charge time is less than charge time used in previously distributed version

NEW CHARGE TIME = 20.165400 ks, 1 Obis

PREVIOUS CHARGE TIME = 21.523410 ks, 1 Obis.

Window constraint met. The ACIS focal plane temperature was above the calibration limit of -118 C for the entire observation.