

V&V Reference Report

L2 ASCDS Version : 7.6.7.1

Observation 5511 - L2 Version 002
Chandra X-Ray Center

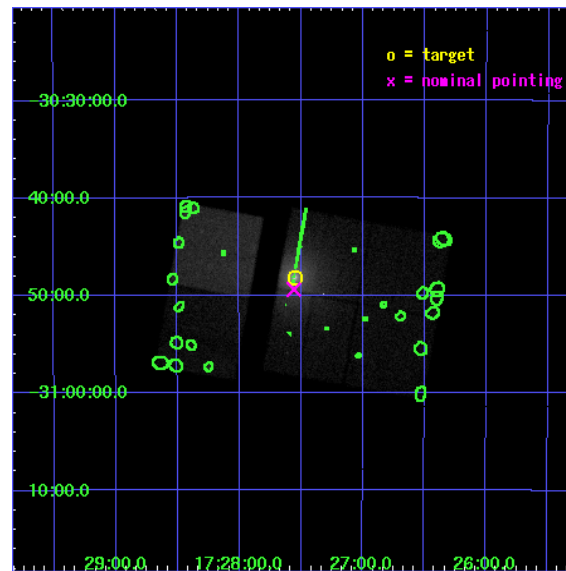
L2 Processing Date : Mar 14 2006

Contents

1	Front	2
2	OBI	3
2.1	OBI	3
2.1.1	Images	3
2.1.2	Bias	3
2.1.3	Parameters	4
2.1.4	Events	4
2.2	Compared Parameters	5
2.3	Aspect	6
2.4	Star Slots	9
2.4.1	Slot 3	9
2.4.2	Slot 4	10
2.4.3	Slot 5	11
2.4.4	Slot 6	12
2.4.5	Slot 7	13
2.5	FID Slots	14
2.5.1	Slot 0	14
2.5.2	Slot 1	15
2.5.3	Slot 2	16
3	Point Sources	17
A	Summary	18
A.1	Status	18
A.2	Comments	18

1 Front

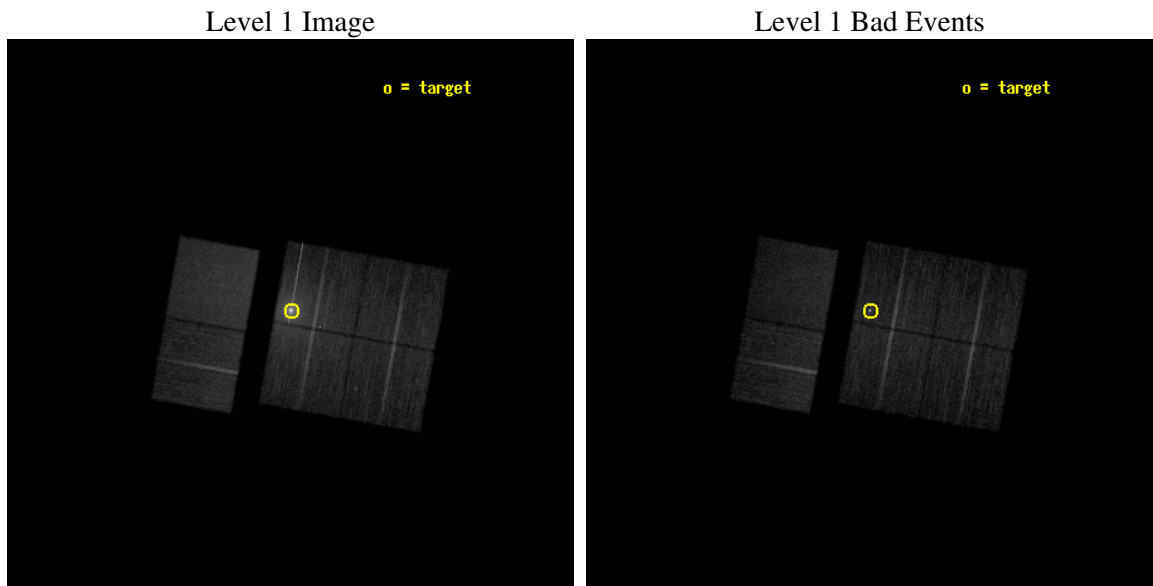
seq_num	400441
obs_id	5511
title	Measuring Dense Clouds with X-rays and Millimeter Waves
observer	Dr. Randall Smith
object	X1724-307
dtcycle	0
cycle	P
ra_targ	261.887083
dec_targ	-30.8024
ra_nom	261.88930147623
dec_nom	-30.823305283539
roll_nom	280.20982730427
revision	2
ontime	14755.199945033
livetime	14568.360718814
ontime0	14755.199945033
ontime1	14755.199945033
ontime2	14755.199945033
ontime3	14755.199945033
ontime6	14755.199945033
ontime7	14755.199945033
l2events	228973



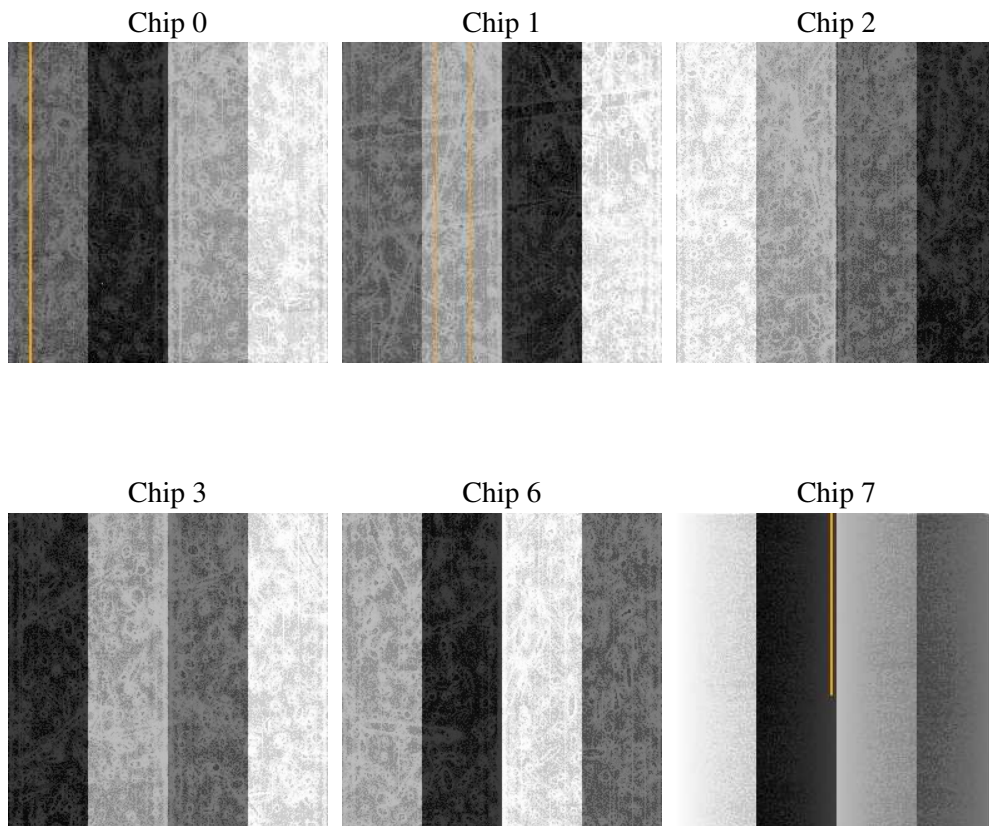
2 OBI

2.1 OBI

2.1.1 Images



2.1.2 Bias



2.1.3 Parameters

obi_num	1
ascdsver	7.6.7.1
caldsver	3.2.1
date	2006-03-14T19:37:17
revision	2

sched_exp_time	15000.000000
ontime	14759.57584554
ontime0	14759.57584554
ontime1	14759.57584554
ontime2	14759.57584554
ontime3	14759.57584554
ontime6	14759.57584554
ontime7	14759.57584554
l1events	790199

2.1.4 Events

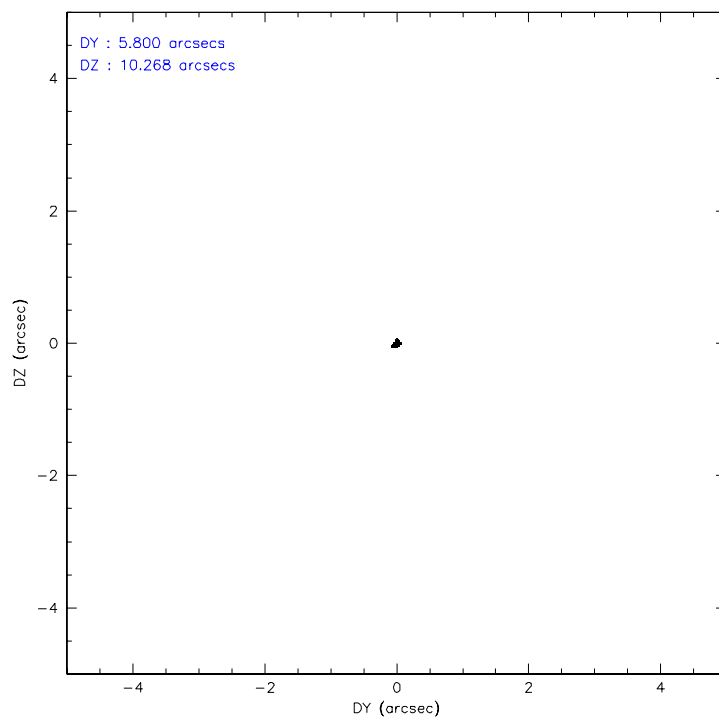
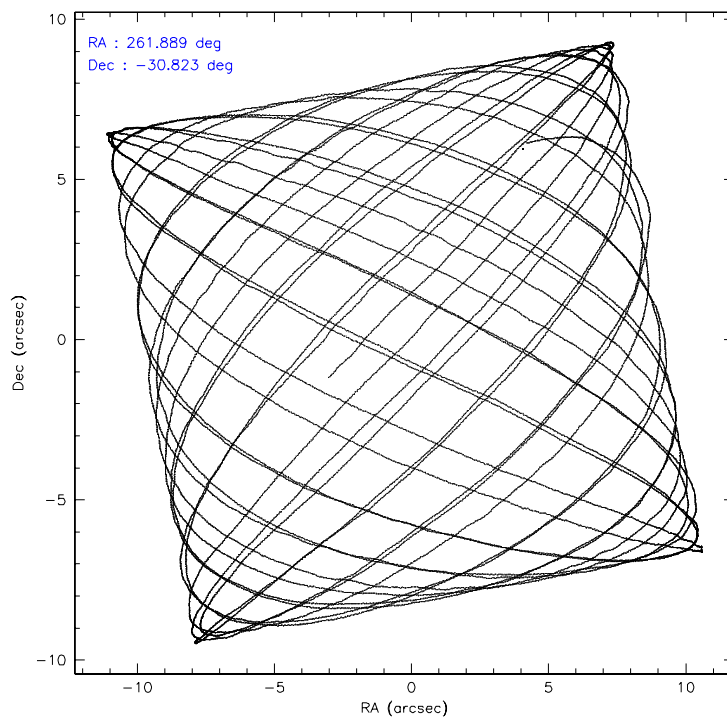
	ccd 0	ccd 1	ccd 2	ccd 3	ccd 6	ccd 7
level 1 events	99038	103855	122397	200381	115296	149232
rejected events	82270	86197	92377	98918	97646	86879
rejected %	83%	82%	75%	49%	84%	58%

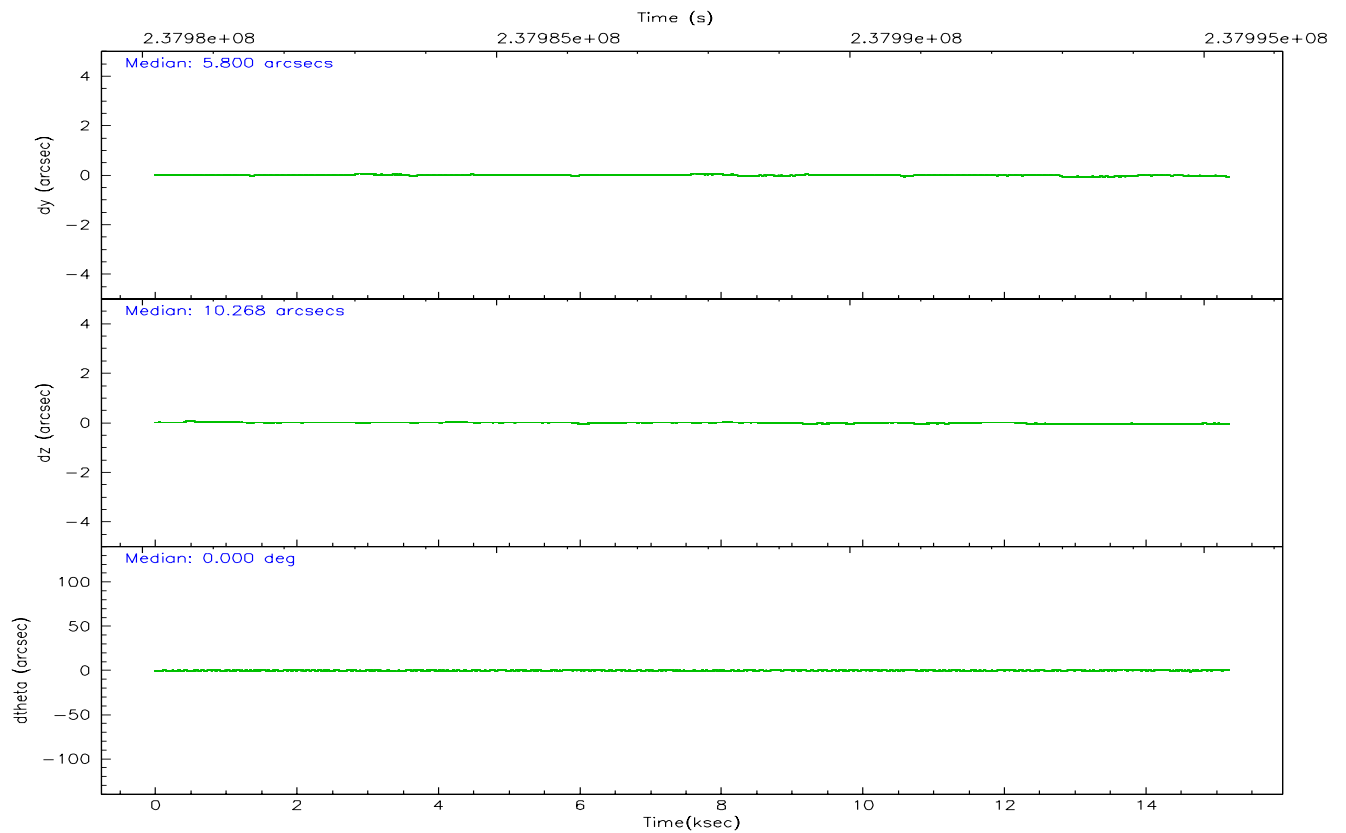
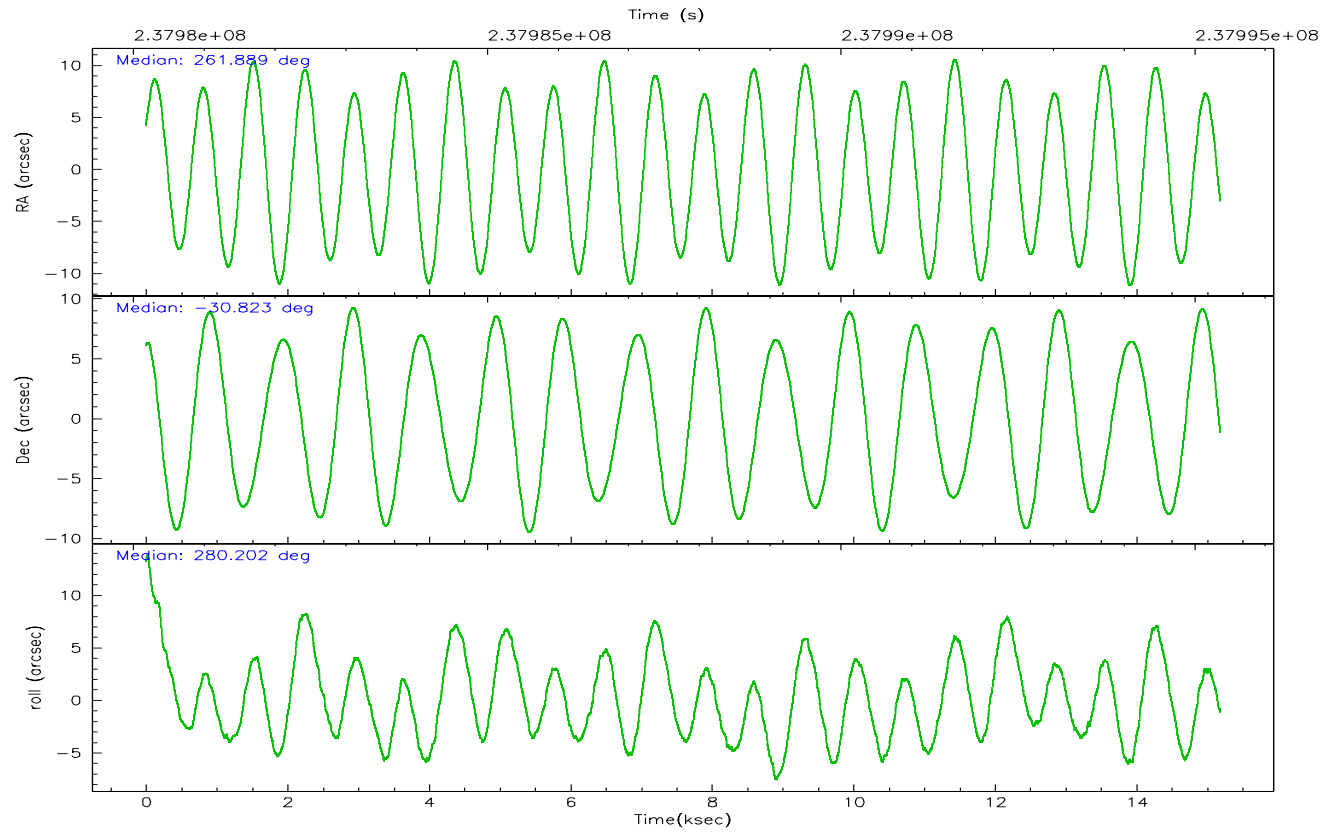
	ccd 0	ccd 1	ccd 2	ccd 3	ccd 6	ccd 7
grade 0 events	7999	7687	18813	71253	8311	4620
	8%	7%	15%	35%	7%	3%
grade 1 events	69	48	147	1967	79	89
	0%	0%	0%	0%	0%	0%
grade 2 events	3584	3948	4923	13527	3824	16228
	3%	3%	4%	6%	3%	10%
grade 3 events	1308	1370	1722	4784	1337	3457
	1%	1%	1%	2%	1%	2%
grade 4 events	1271	1479	1835	4891	1316	3397
	1%	1%	1%	2%	1%	2%
grade 5 events	4141	4310	4175	6495	4913	9137
	4%	4%	3%	3%	4%	6%
grade 6 events	2609	3176	2736	7026	2872	34662
	2%	3%	2%	3%	2%	23%
grade 7 events	78057	81837	88046	90438	92644	77642
	78%	78%	71%	45%	80%	52%

2.2 Compared Parameters

Parameter	Planned	Actual	Parameter	Planned	Actual
Instrument	ACIS	ACIS	Obspar format version number	6	6
Detector	ACIS-012367	ACIS-012367	Obspar file type	PREDICTED	ACTUAL
Grating	NONE	NONE	Obspar update status	NONE	UPDATED
Data mode	FAINT	FAINT	On-chip summing requested	N	N
Observation mode	POINTING	POINTING	Subarray requested	NONE	NONE
Pointing RA	261.868589	261.889301476226	Alternating exposures requested	N	N
Pointing Dec	-30.802494	-30.82330528353922	Primary exposure time	0.000000	3.2
Pointing Roll	279.990533	280.2098273042659			
SIM focus pos (mm)	-0.782348	-0.7809083437167272			
SIM defocus (mm)	0	0.001439871863259334			
SIM translation stage pos (mm)	-215.592463	-215.5874512169607			
SIM translation stage offset (mm)	-18	-18.00500178596903			
Observation start time	237980354.184000	237979695.41176			
Observation start date	2005-07-17T09:38:10	2005-07-17T09:28:15			
Observation end time	237995354.184000	237996675.05004			
Observation end date	2005-07-17T13:48:10	2005-07-17T14:11:15			
Read mode	TIMED	TIMED			

2.3 Aspect



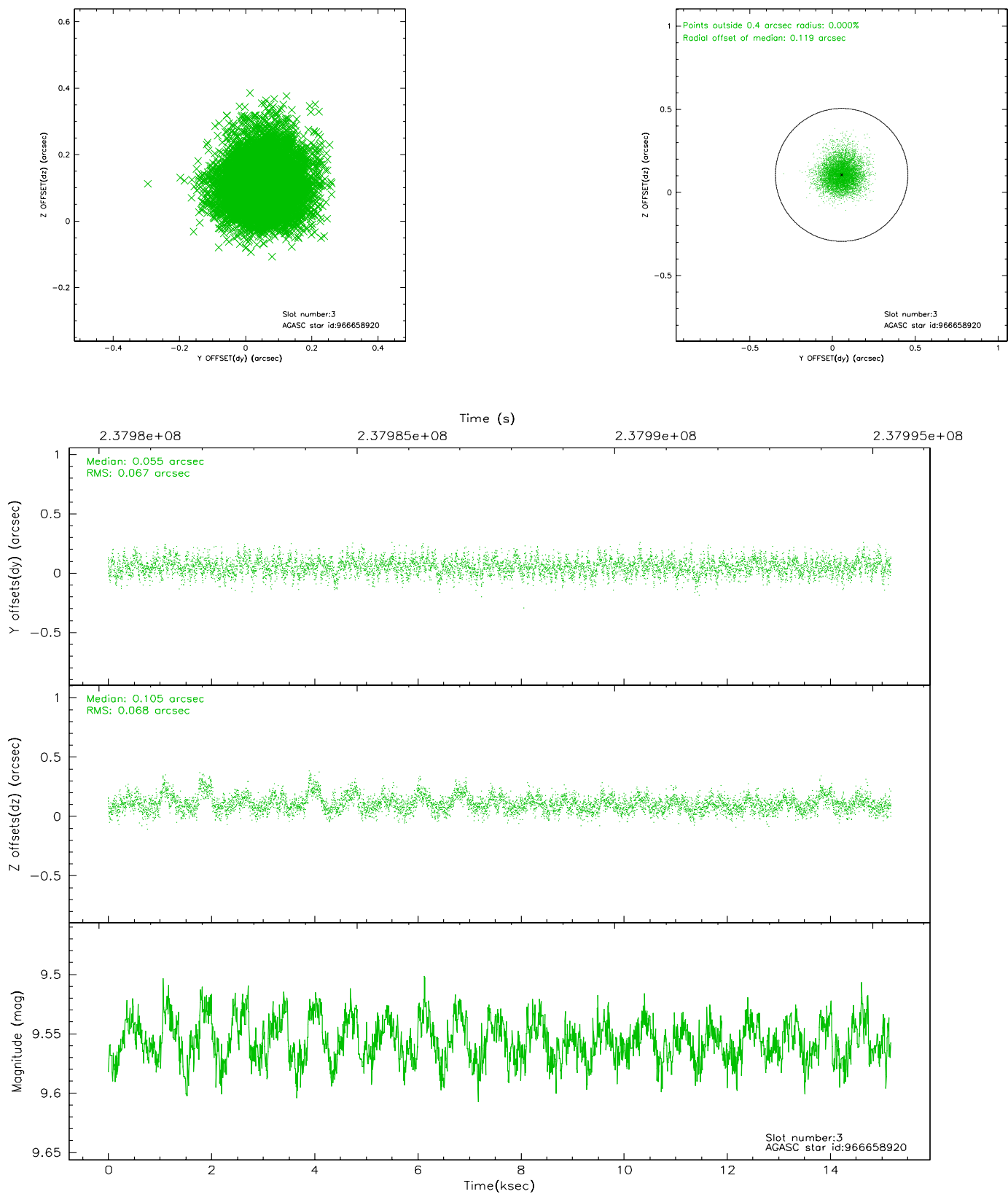


Slot Statistics

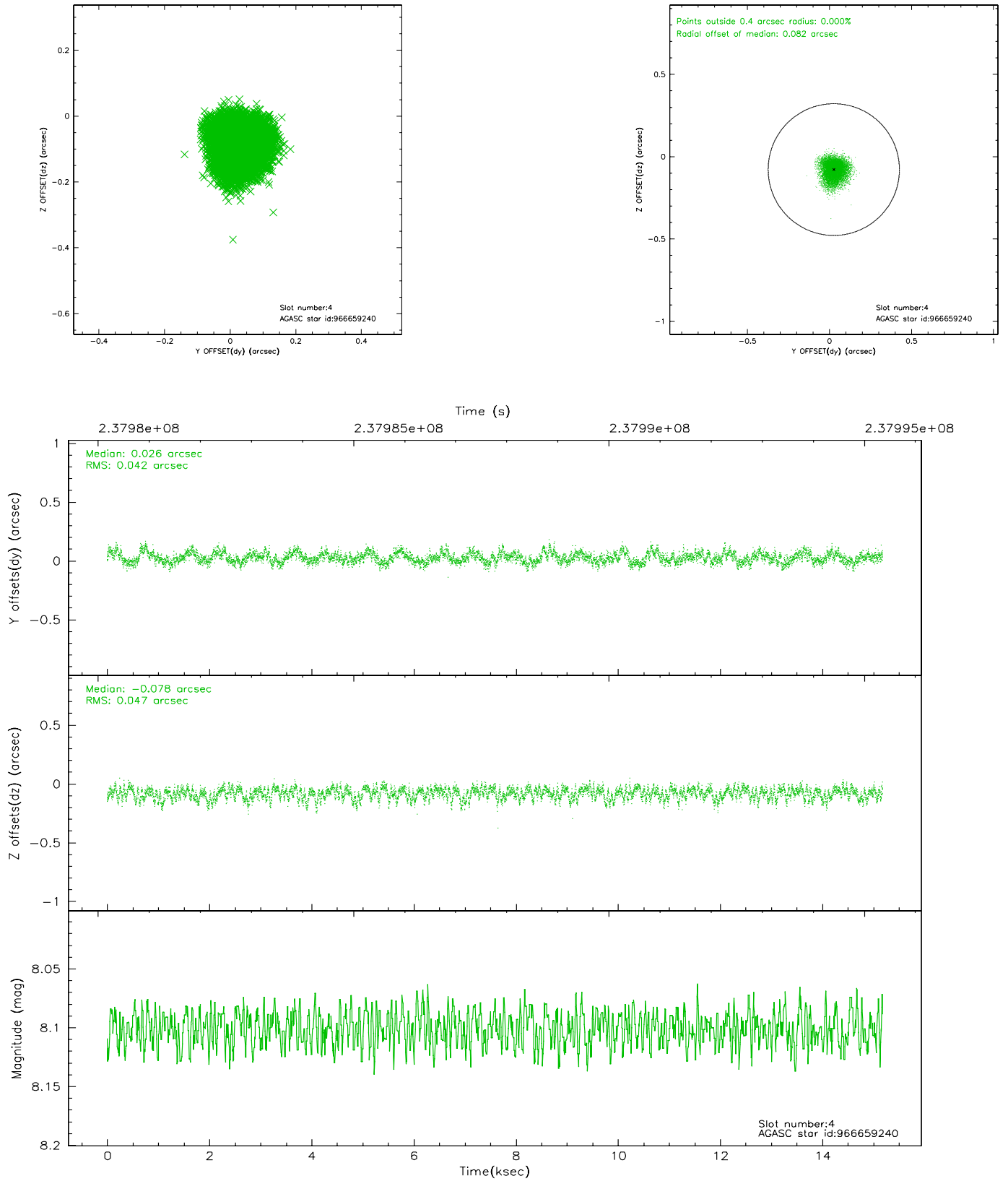
slot	status	id	mag	n_pts	med_dy	med_dz	dr1	dr2	ra	dec	mean_y	mean_z
0	FID	ACIS-I-1	7.21	3704	0.262	-0.207	0.006	0.010	0.000000	0.000000	933.80	-1203.74
1	FID	ACIS-I-5	7.22	3704	-0.376	0.204	0.006	0.010	0.000000	0.000000	-1814.71	694.01
2	FID	ACIS-I-6	7.27	3702	0.022	0.074	0.007	0.011	0.000000	0.000000	398.87	1338.65
3	GUIDE	966658920	9.56	7406	0.055	0.105	0.101	0.166	262.388325	-31.303244	2056.74	1261.16
4	GUIDE	966659240	8.10	7409	0.026	-0.078	0.067	0.108	262.189777	-30.931568	631.67	895.84
5	GUIDE	966662864	6.51	7408	-0.114	0.016	0.037	0.059	261.732957	-31.091595	953.15	-592.40
6	GUIDE	966663720	7.86	7409	-0.022	-0.022	0.053	0.087	262.170068	-31.384212	2224.92	548.73
7	GUIDE	966663784	8.73	7379	0.054	-0.022	0.077	0.124	261.636886	-31.482666	2289.74	-1125.44

2.4 Star Slots

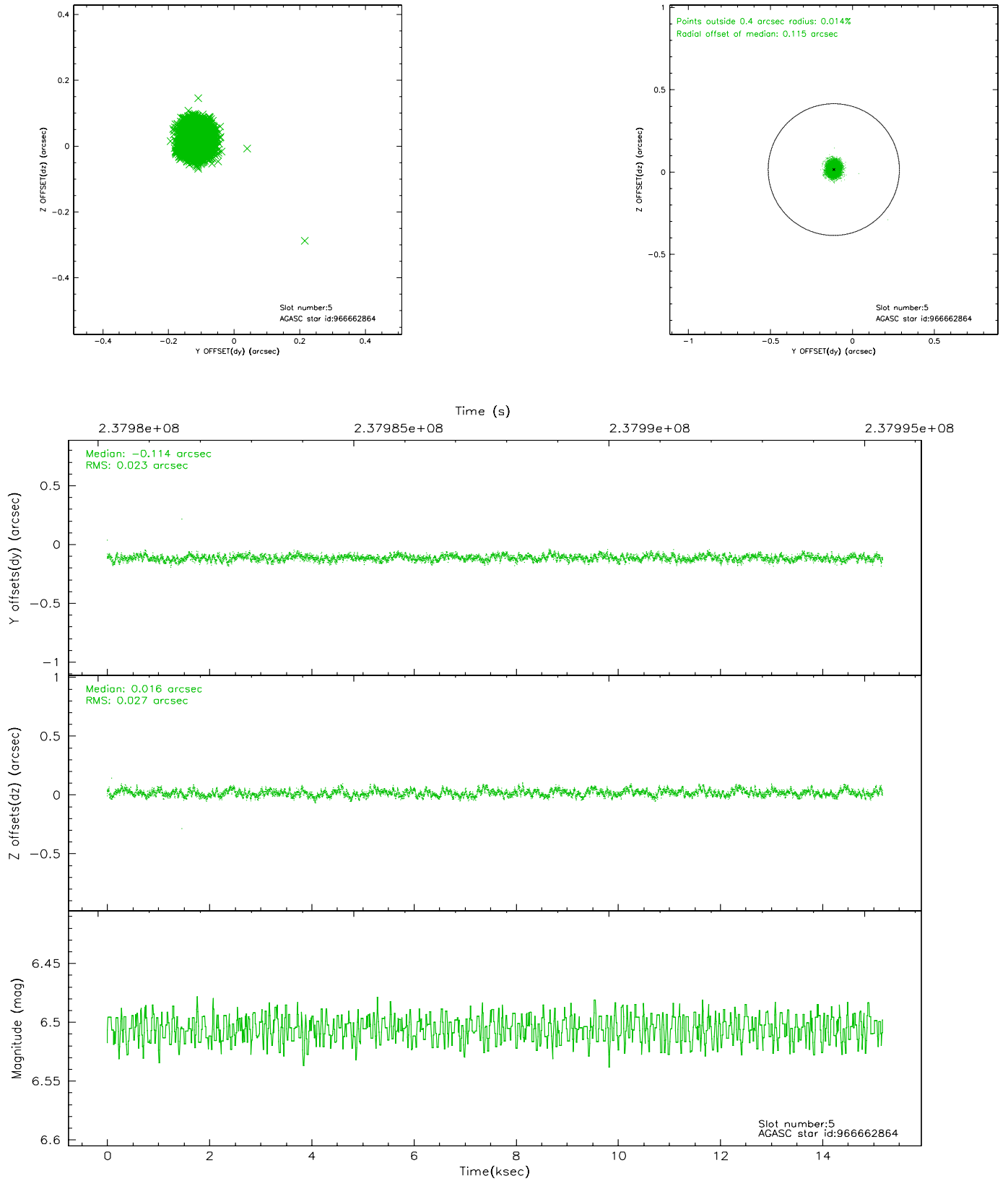
2.4.1 Slot 3



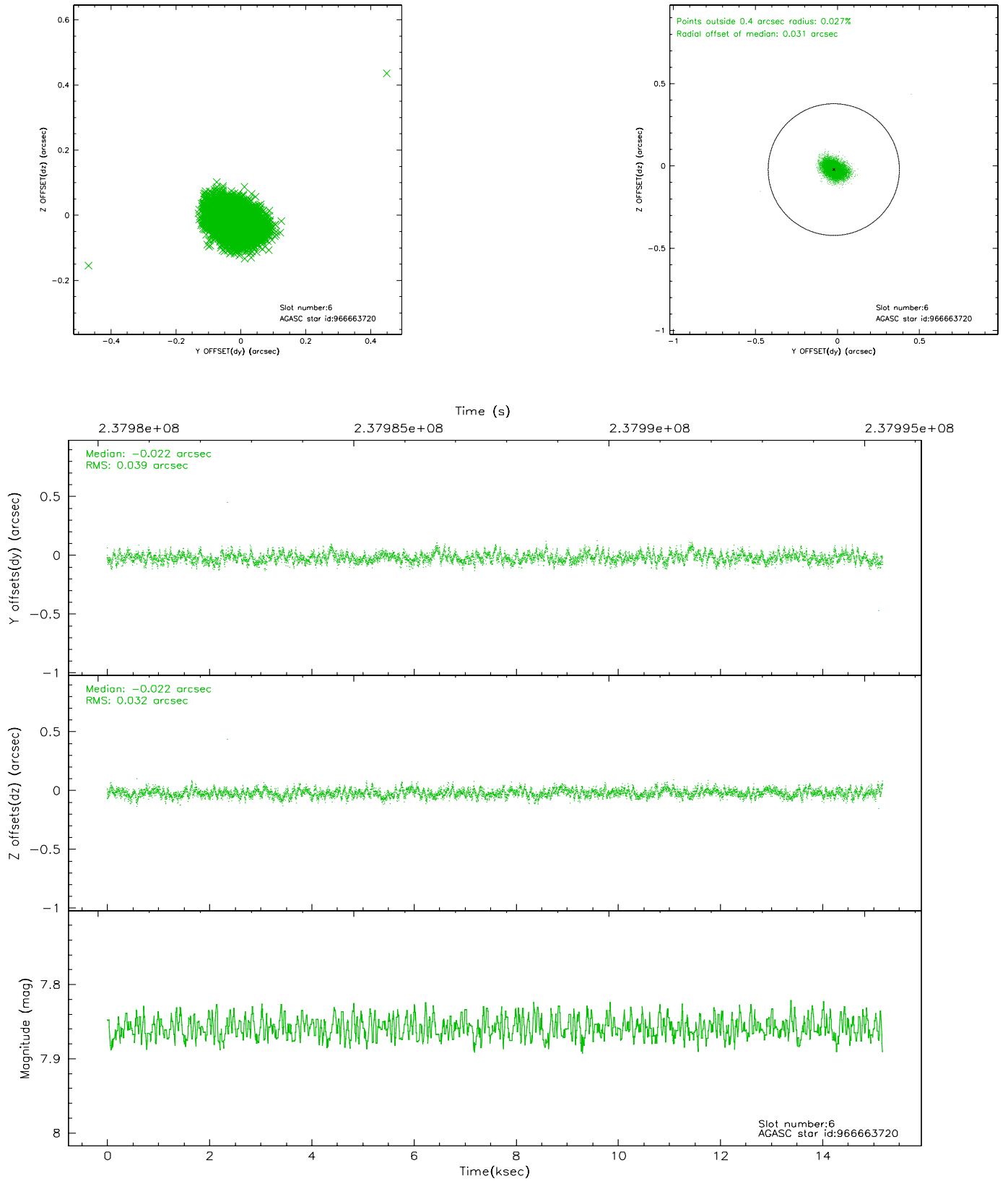
2.4.2 Slot 4



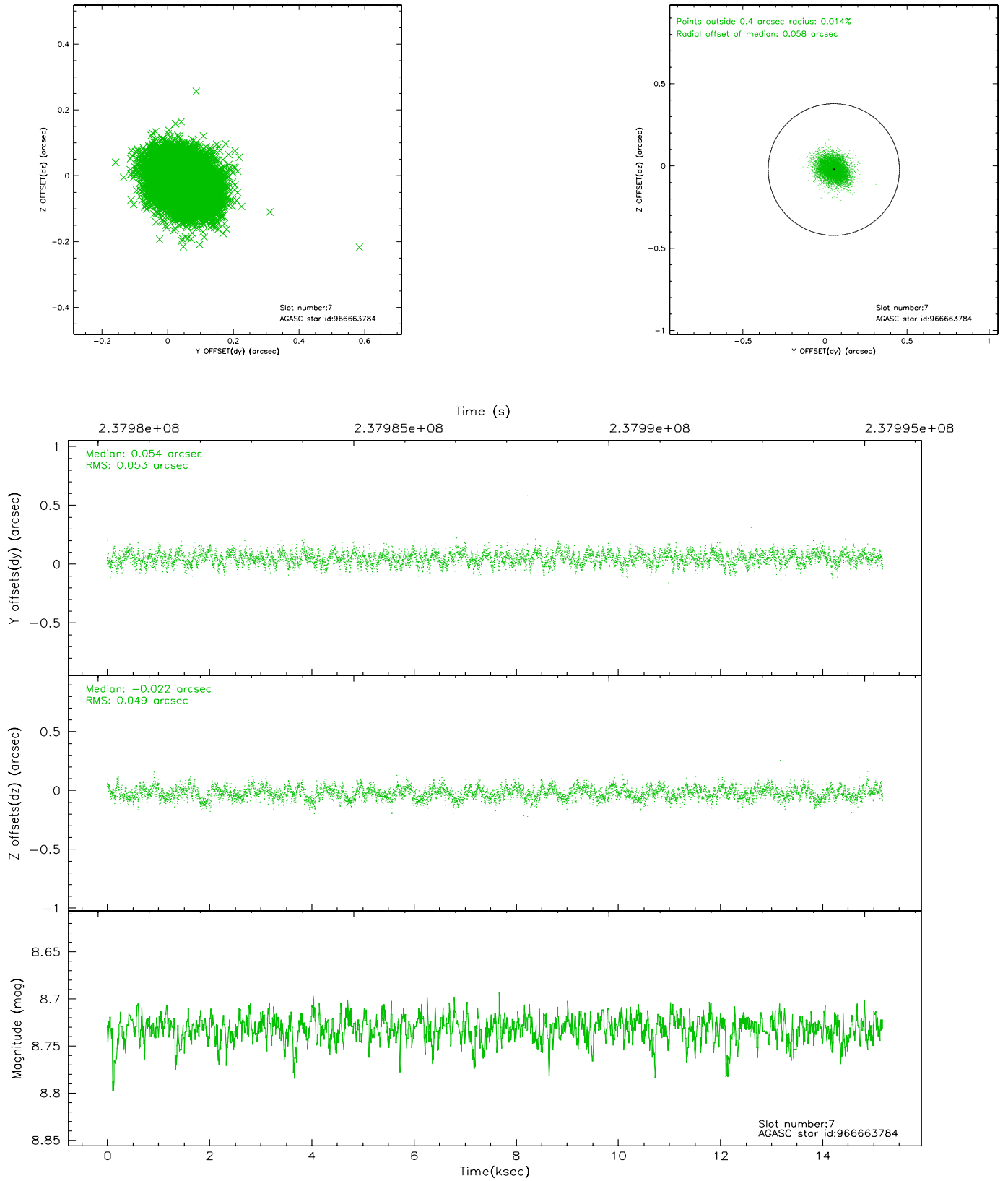
2.4.3 Slot 5



2.4.4 Slot 6

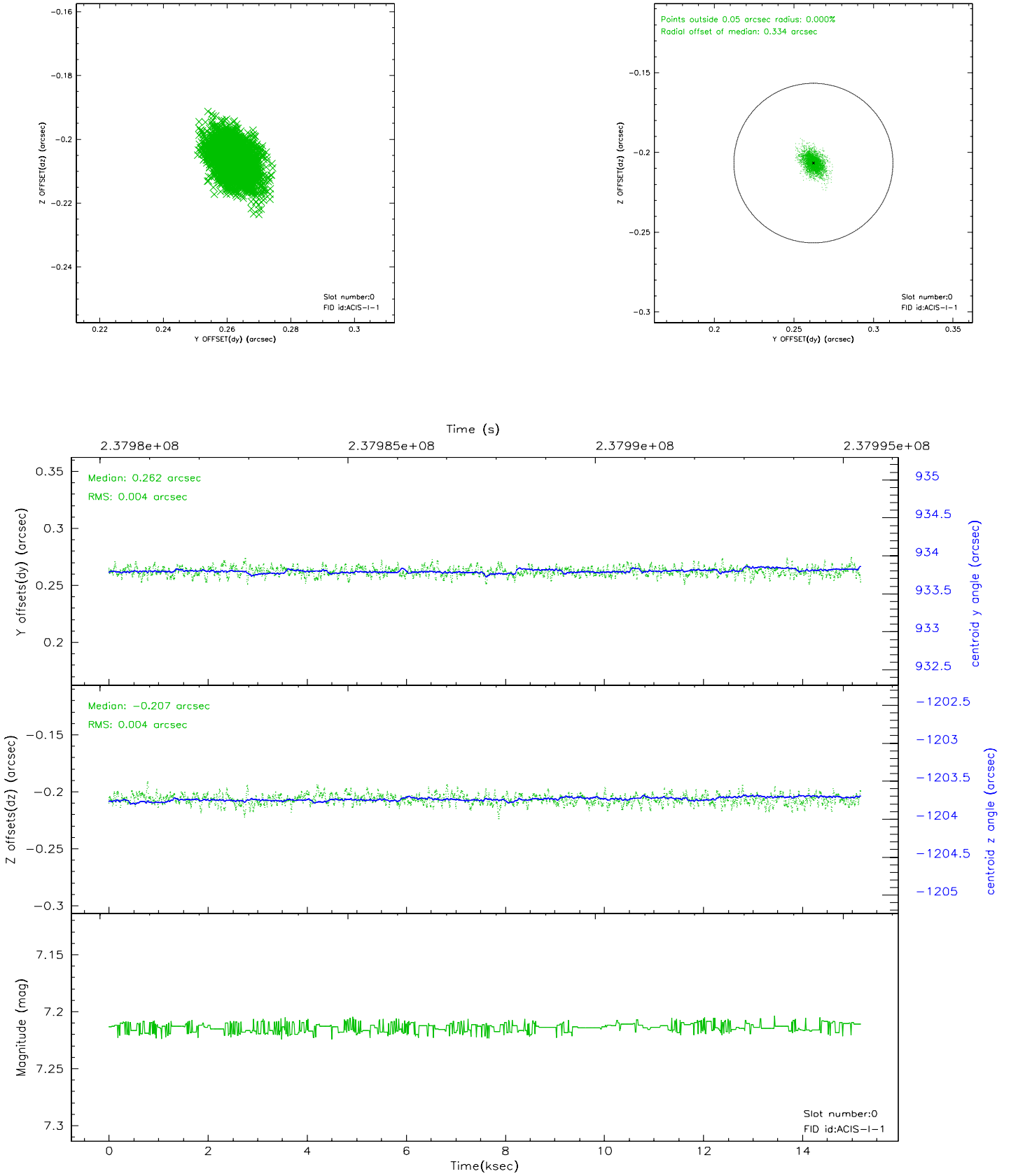


2.4.5 Slot 7

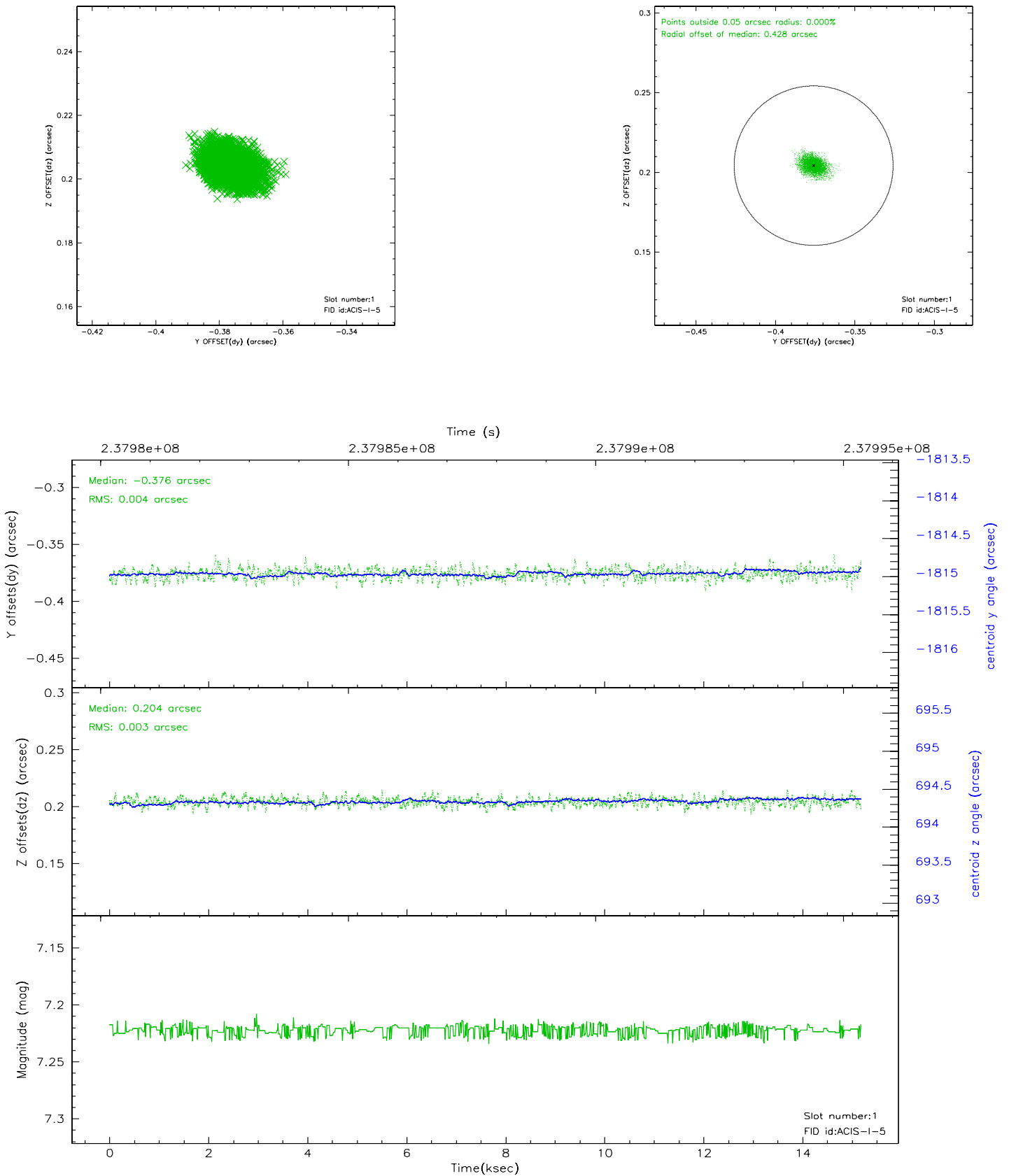


2.5 FID Slots

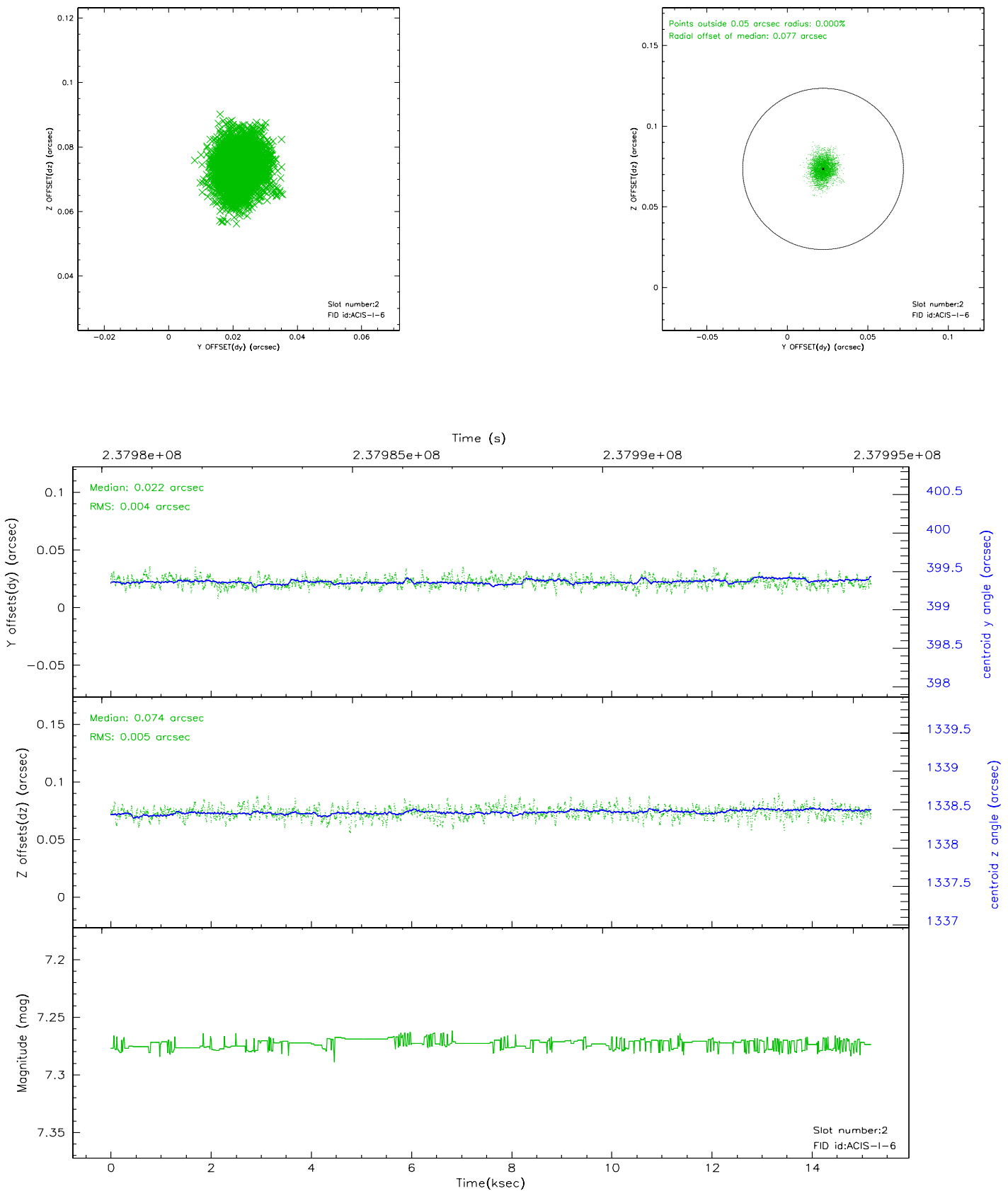
2.5.1 Slot 0



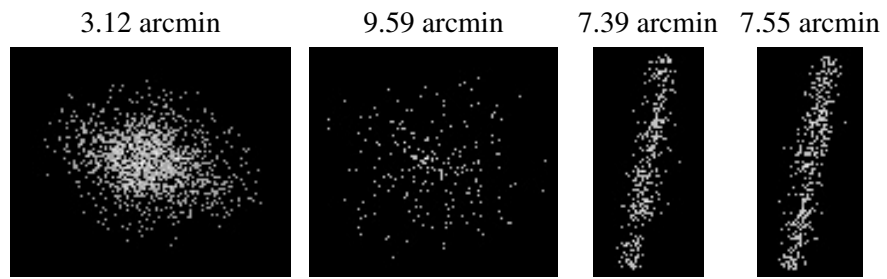
2.5.2 Slot 1



2.5.3 Slot 2



3 Point Sources



A Summary

A.1 Status

V&V Scientist	Joy Nichols
V&V Date (YYYY-MM-DD)	2006.04.13
V&V Edition	1
V&V Disposition and Status	OK
V&V Charge Time	14.75519

A.2 Comments

Fid in slot 1 radial offset > 0.400000 arcsec, but is not large enough to negatively affect the aspect solution.