

V&V Reference Report

L2 ASCDS Version : 8.4.3

Observation 5493 - L2 Version 2
Chandra X-Ray Center

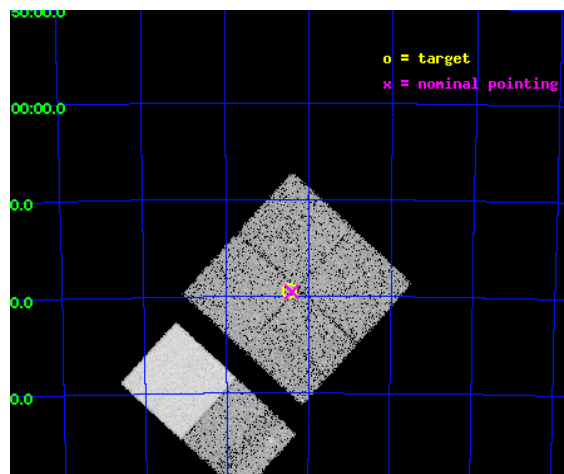
L2 Processing Date : Mar 26 2012

Contents

1	Front	2
2	OBI	3
2.1	OBI	3
2.1.1	Images	3
2.1.2	Bias	3
2.1.3	Parameters	4
2.1.4	Events	4
2.2	Compared Parameters	5
2.3	Aspect	6
2.4	Star Slots	9
2.4.1	Slot 3	9
2.4.2	Slot 4	10
2.4.3	Slot 5	11
2.4.4	Slot 6	12
2.4.5	Slot 7	13
2.5	FID Slots	14
2.5.1	Slot 0	14
2.5.2	Slot 1	15
2.5.3	Slot 2	16
A	Summary	17
A.1	Status	17
A.2	Comments	17

1 Front

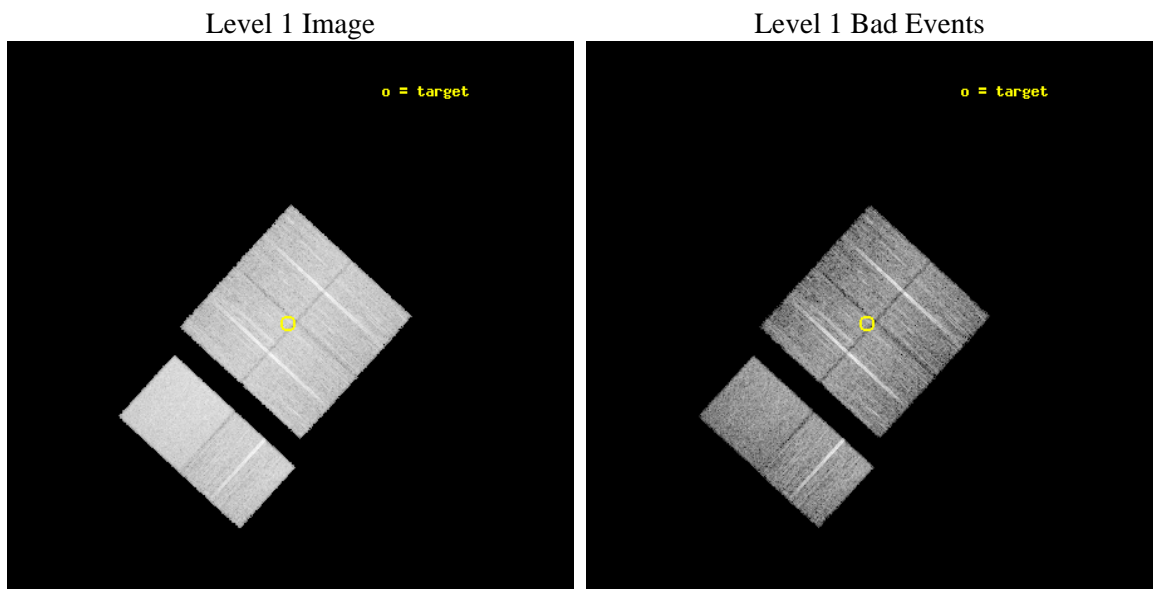
seq_num	400423	Sequence number
obs_id	5493	Observation id
title	Discovering X-ray pulsars in the Wing of the Small Magellanic Cloud	
observer	Prof Malcolm Coe	Principal investigator
object	SMCwing 14	Source name
dtcycle	0	
cycle	P	events from which exps? Prim/Second/Both
ra_targ	20.116667	Observer's specified target RA [deg]
dec_targ	-73.324167	Observer's specified target Dec [deg]
ra_nom	20.1013232587	Nominal RA [deg]
dec_nom	-73.325731558873	Nominal Dec [deg]
roll_nom	222.53148217132	Nominal Roll [deg]
revision	2	Processing version of data
ontime	9804.7589931488	Sum of GTIs [s]
livetime	9680.6052310605	Livetime [s]
ontime0	9807.9999634624	Sum of GTIs [s]
ontime1	9807.9999634624	Sum of GTIs [s]
ontime2	9807.9999634624	Sum of GTIs [s]
ontime3	9804.7589931488	Sum of GTIs [s]
ontime6	9807.9999634624	Sum of GTIs [s]
ontime7	9807.9999634624	Sum of GTIs [s]
l2events	96358	Number of level 2 events



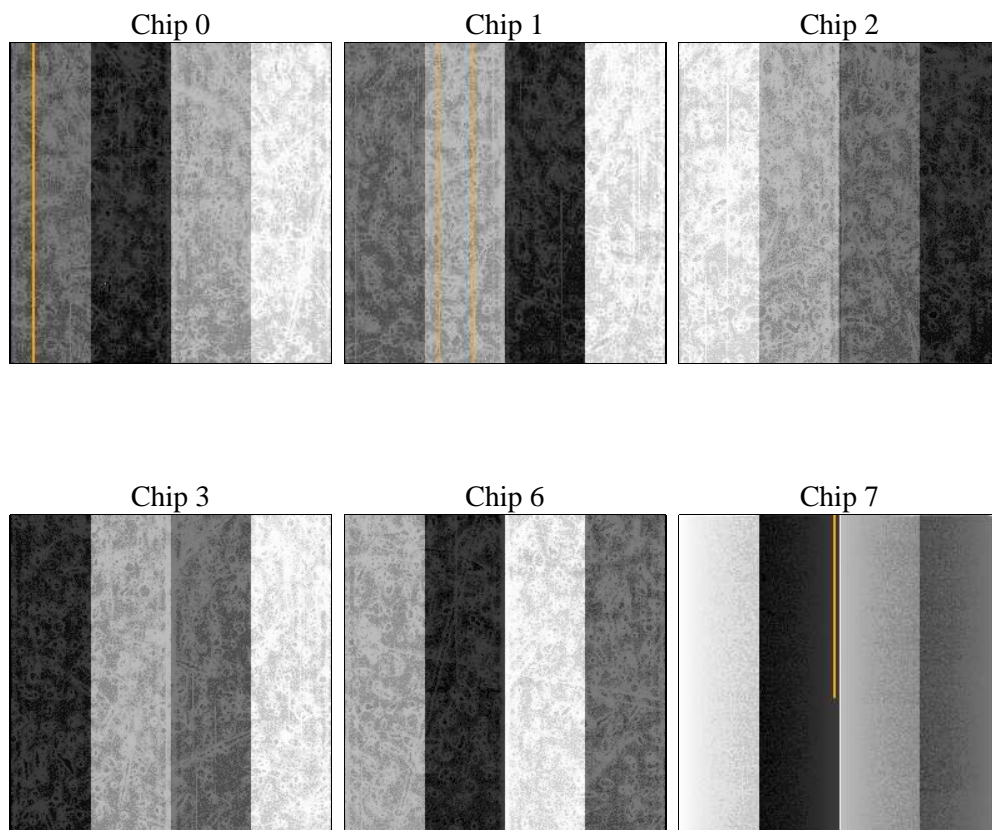
2 OBI

2.1 OBI

2.1.1 Images



2.1.2 Bias



2.1.3 Parameters

obi_num	0	Obi number	sched_exp_time	9695.606000	[s] Scheduled observation exposure time
ascdsver	8.4.3	Processing system revision	ontime	9804.7589931488	Sum of GTIs [s]
caldsver	4.4.8	 	ontime0	9807.9999634624	Sum of GTIs [s]
date	2012-03-26T06:57:08	Date and time of file creation	ontime1	9807.9999634624	Sum of GTIs [s]
revision	2	Processing version of data	ontime2	9807.9999634624	Sum of GTIs [s]
			ontime3	9804.7589931488	Sum of GTIs [s]
			ontime6	9807.9999634624	Sum of GTIs [s]
			ontime7	9807.9999634624	Sum of GTIs [s]
			l1events	566625	Number of level 1 events

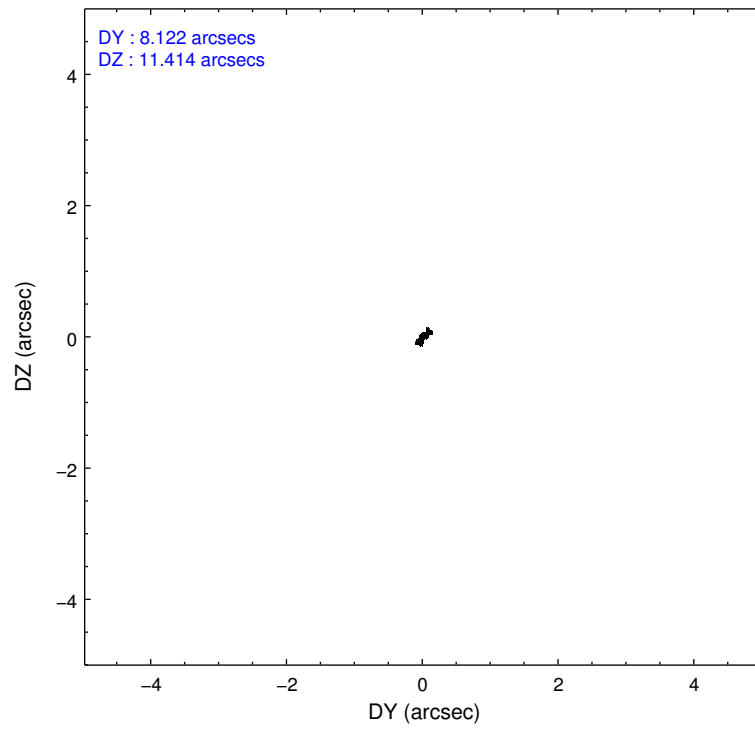
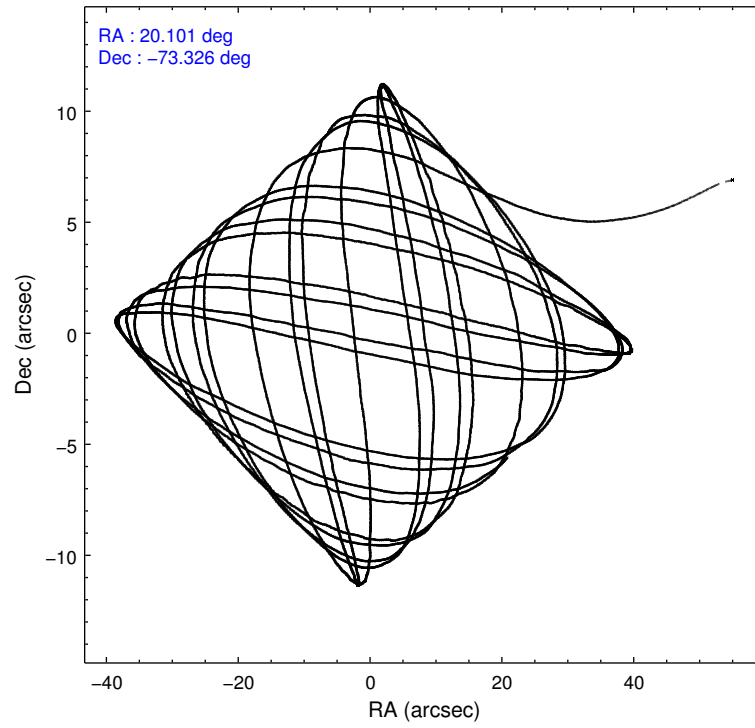
2.1.4 Events

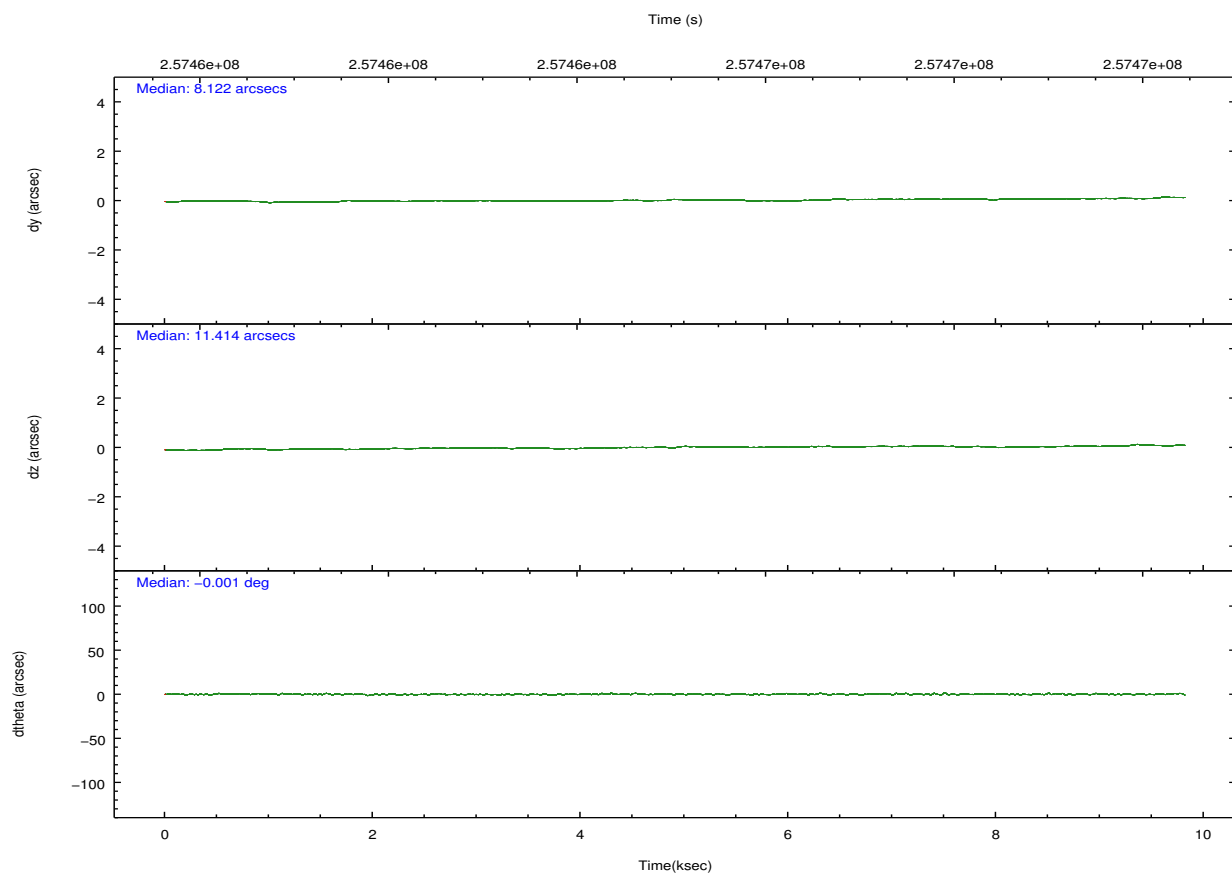
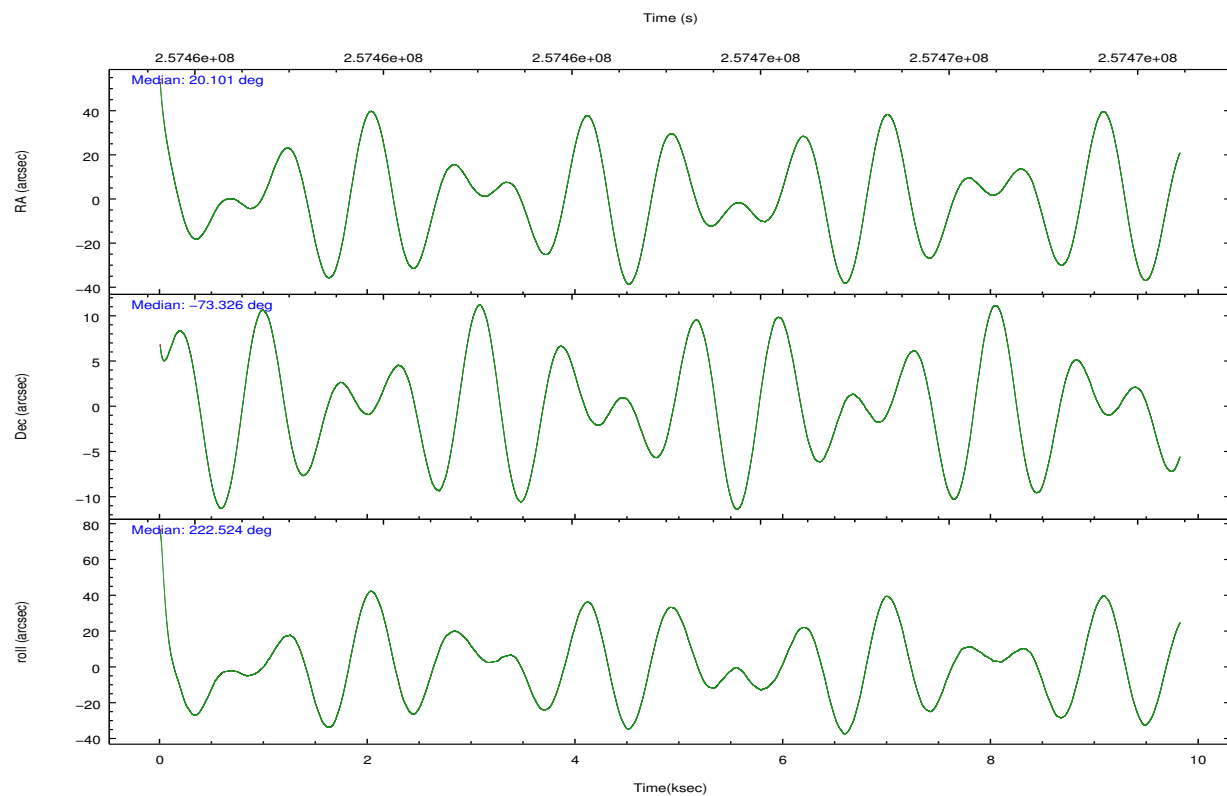
	ccd 0	ccd 1	ccd 2	ccd 3	ccd 6	ccd 7		ccd 0	ccd 1	ccd 2	ccd 3	ccd 6	ccd 7
level 1 events	84374	84489	91632	89276	93398	123456	grade 0 events	5862	5245	5619	5287	5012	4621
rejected events	72947	73087	80557	78437	82185	74720		6%	6%	6%	5%	5%	3%
rejected %	86%	86%	87%	87%	87%	60%	grade 1 events	118	91	59	75	57	104
								0%	0%	0%	0%	0%	0%
							grade 2 events	2657	2689	2248	2151	2448	10285
								3%	3%	2%	2%	2%	8%
							grade 3 events	1140	1132	1032	1024	1083	4533
								1%	1%	1%	1%	1%	3%
							grade 4 events	1025	1156	1080	1003	1054	4405
								1%	1%	1%	1%	1%	3%
							grade 5 events	3562	3892	3453	4168	4220	11657
								4%	4%	3%	4%	4%	9%
							grade 6 events	1887	2302	1776	2038	2295	27906
								2%	2%	1%	2%	2%	22%
							grade 7 events	68123	67982	76365	73530	77229	59945
								80%	80%	83%	82%	82%	48%

2.2 Compared Parameters

Parameter	Planned	Actual	Parameter	Planned	Actual
Instrument	ACIS	ACIS	Obspar format version number	7	7
Detector	ACIS-012367	ACIS-012367	Obspar file type	PREDICTED	ACTUAL
Grating	NONE	NONE	Obspar update status	NONE	UPDATED
Data mode	FAINT	FAINT	Number of optional ACIS chips dropped	0	0
Observation mode	POINTING	POINTING	On-chip summing requested	N	N
[deg] Pointing RA	20.129669	20.10132325870046	Subarray requested	NONE	NONE
[deg] Pointing Dec	-73.299561	-73.32573155887277	Alternating exposures requested	N	N
[deg] Pointing Roll	222.349913	222.5314821713189	[s] Primary exposure time	0.000000	3.2
[mm] SIM focus pos	-0.782348	-0.7809083437167272			
[mm] SIM defocus	0	0.001439871863259334			
[mm] SIM translation stage pos	-233.592463	-233.5874344608287			
[mm] SIM translation stage offset	0	-0.005018542100998502			
[s] Observation start time (MET)	257460257.184000	257458909.06034			
Observation start date	2006-02-27T20:43:12	2006-02-27T20:21:49			
[s] Observation end time (MET)	257469952.184000	257470193.79836			
Observation end date	2006-02-27T23:24:47	2006-02-27T23:29:53			
Read mode	TIMED	TIMED			

2.3 Aspect



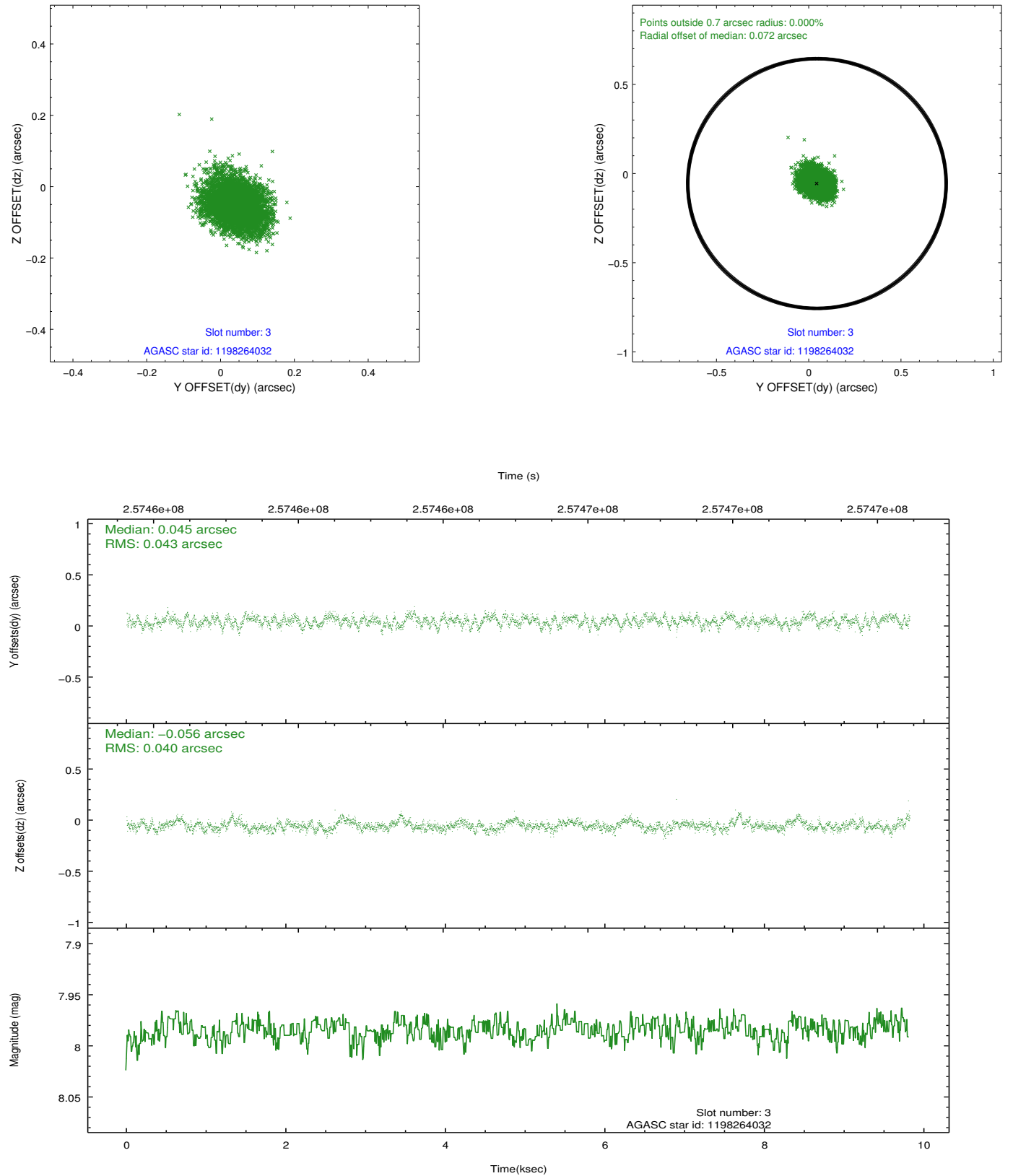


Slot Statistics

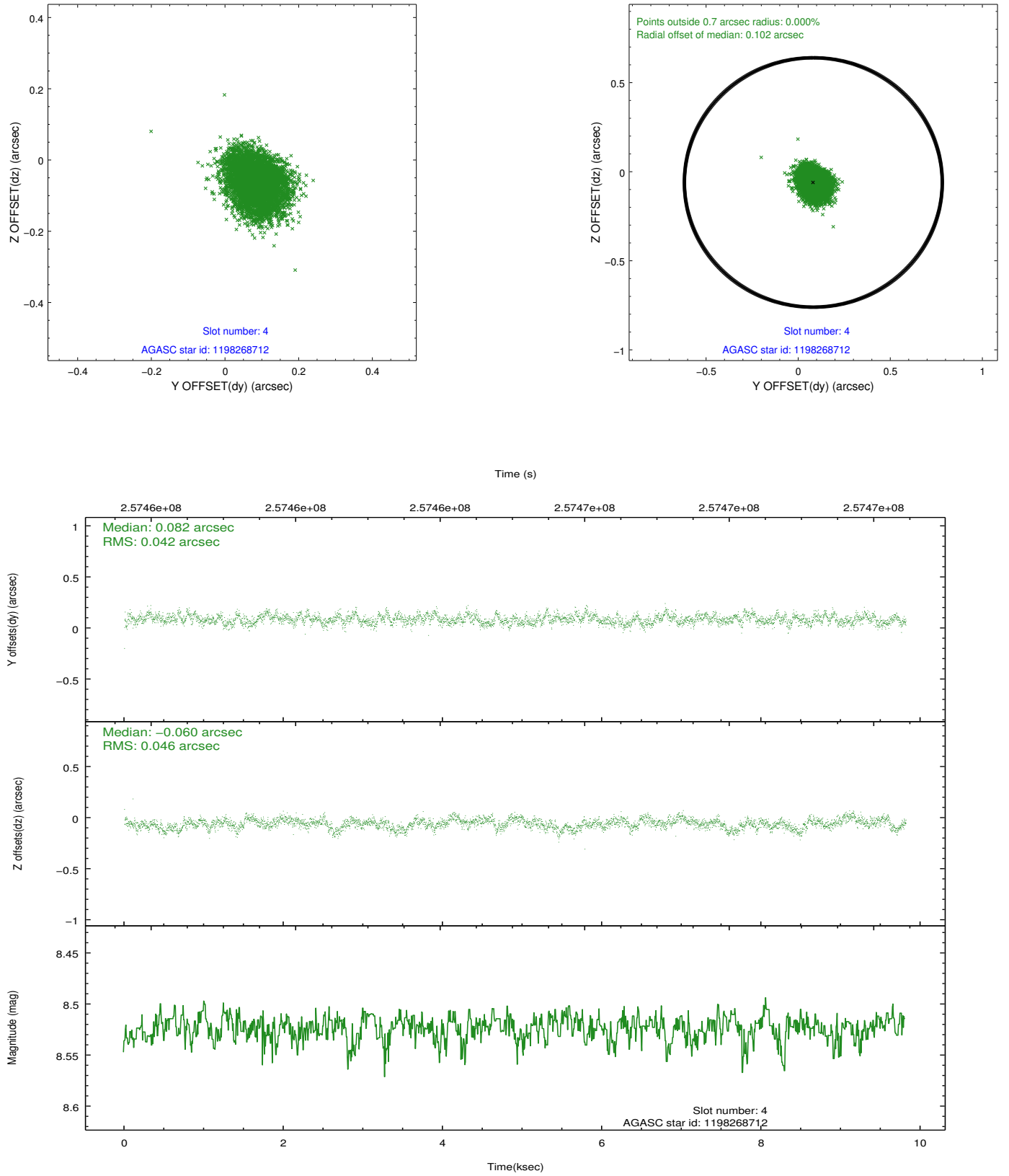
slot	status	id	mag	n_pts	med_dy	med_dz	dr1	dr2	ra	dec	mean_y	mean_z
0	FID	ACIS-I-1	7.24	2395	0.058	-0.039	0.007	0.012	0.000000	0.000000	931.55	-834.97
1	FID	ACIS-I-5	7.22	2395	-0.188	0.065	0.006	0.011	0.000000	0.000000	-1816.46	1062.41
2	FID	ACIS-I-6	7.25	2395	0.039	0.044	0.007	0.011	0.000000	0.000000	396.55	1707.46
3	GUIDE	1198264032	7.98	4789	0.045	-0.056	0.062	0.101	22.563131	-73.173817	-2143.47	1411.51
4	GUIDE	1198268712	8.52	4787	0.082	-0.060	0.066	0.107	21.961983	-73.269598	-1456.75	1221.38
5	GUIDE	1198269920	8.27	4790	0.007	0.067	0.064	0.098	20.316466	-73.033728	-789.68	-574.13
6	GUIDE	1198272400	9.16	4785	-0.067	-0.056	0.097	0.154	20.411923	-73.620598	567.10	1047.98
7	GUIDE	1198282880	9.57	4786	-0.070	0.107	0.114	0.184	17.772623	-73.017886	1181.17	-2381.39

2.4 Star Slots

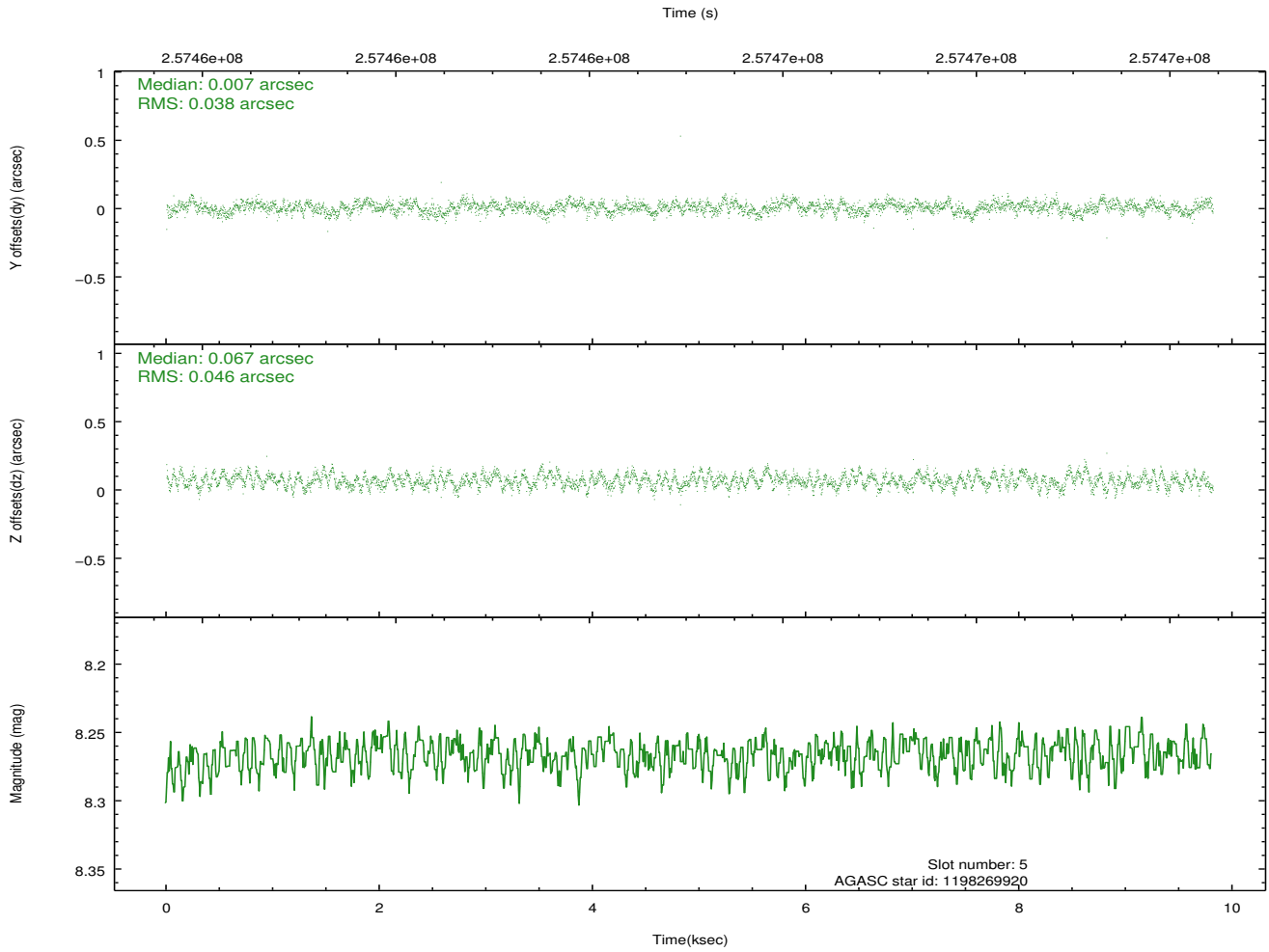
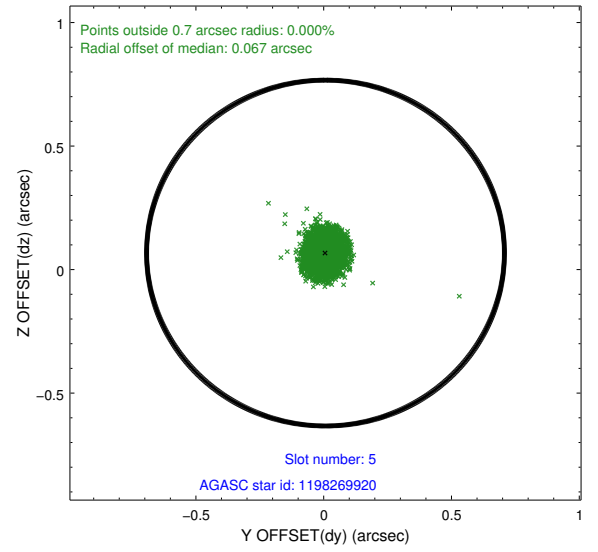
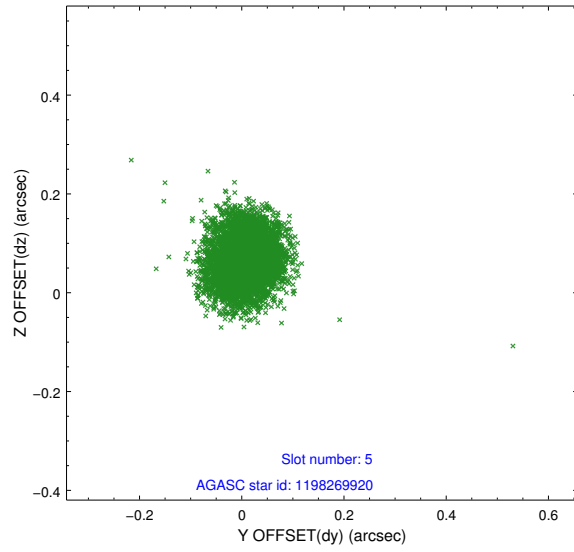
2.4.1 Slot 3



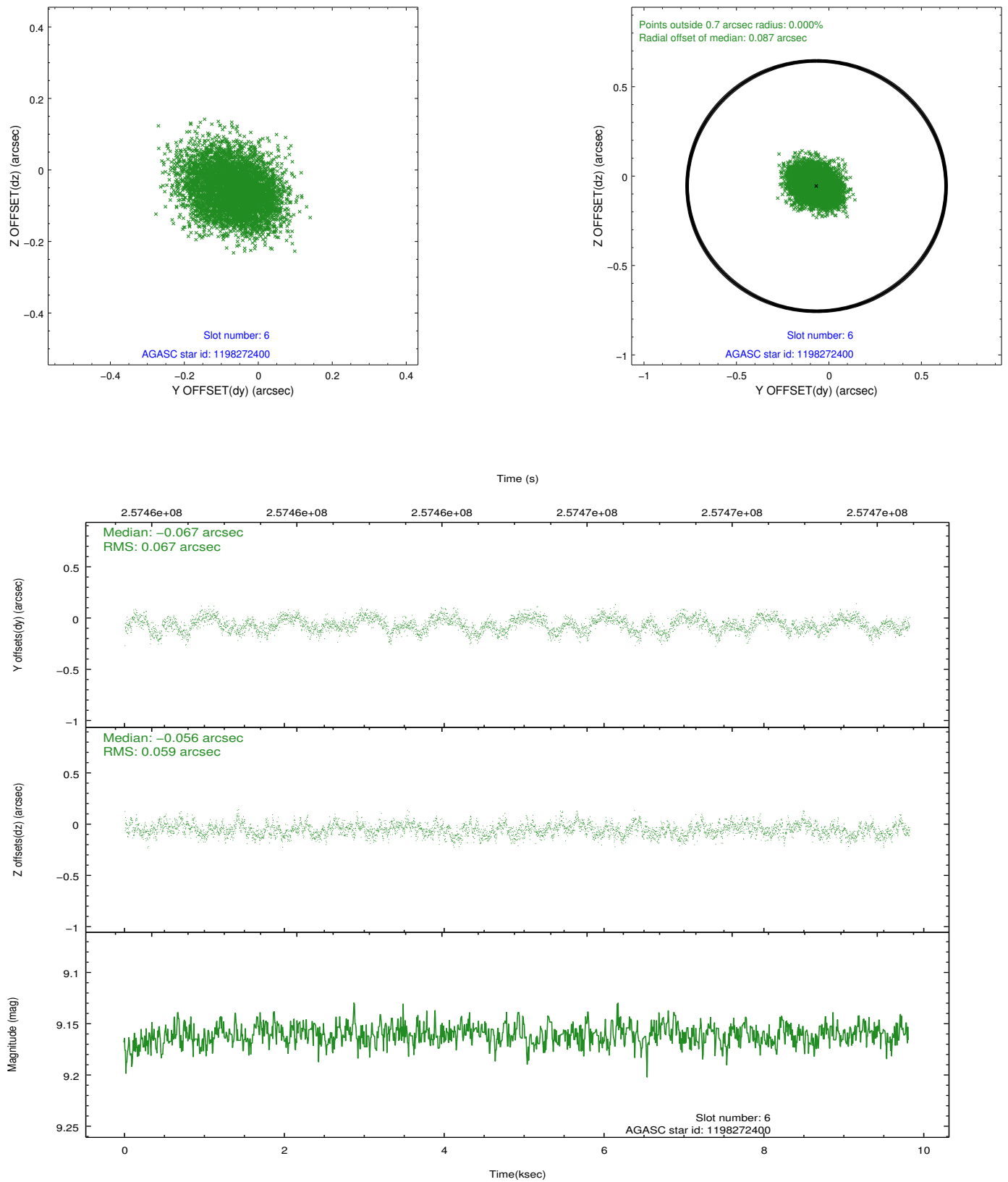
2.4.2 Slot 4



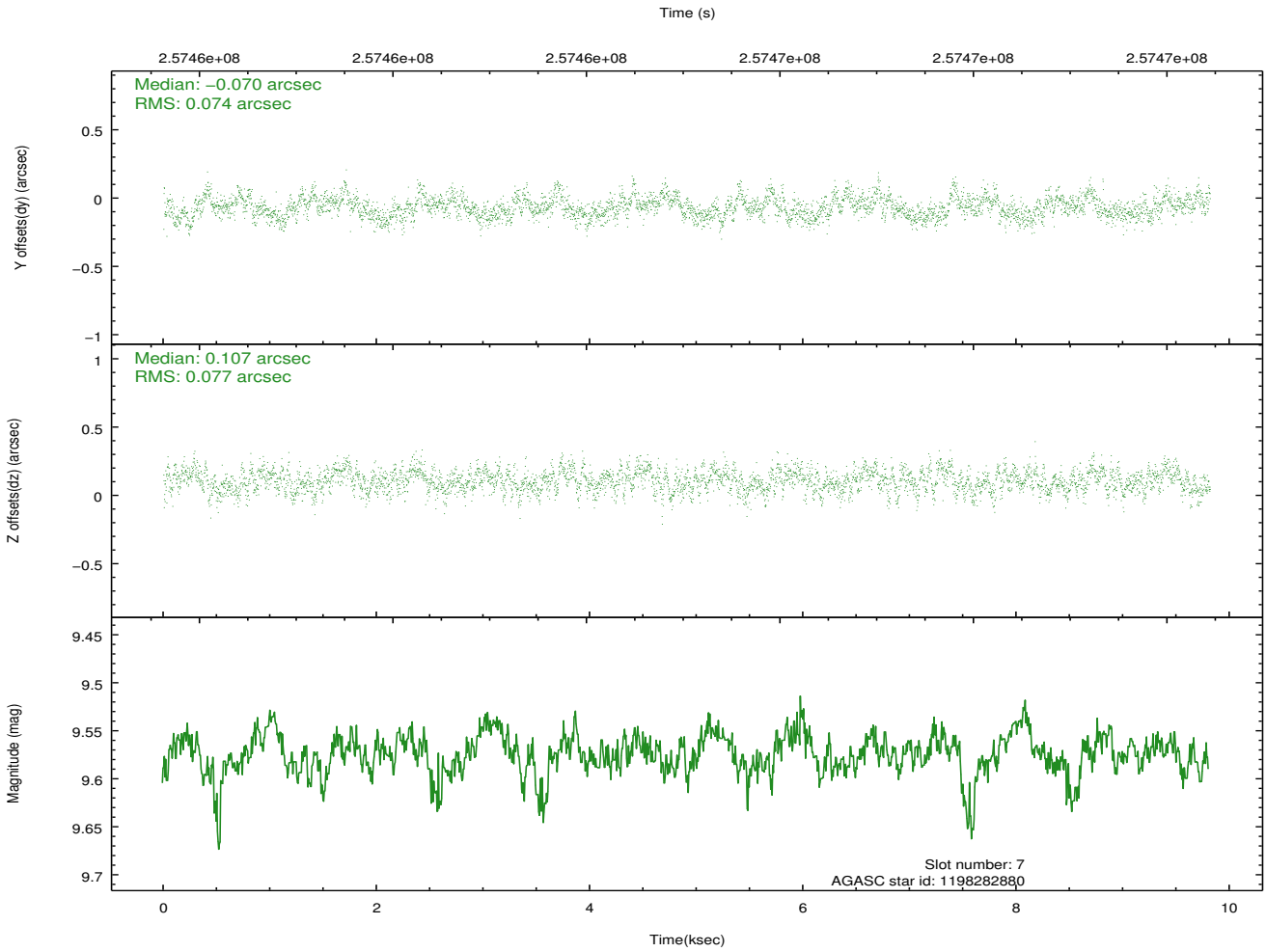
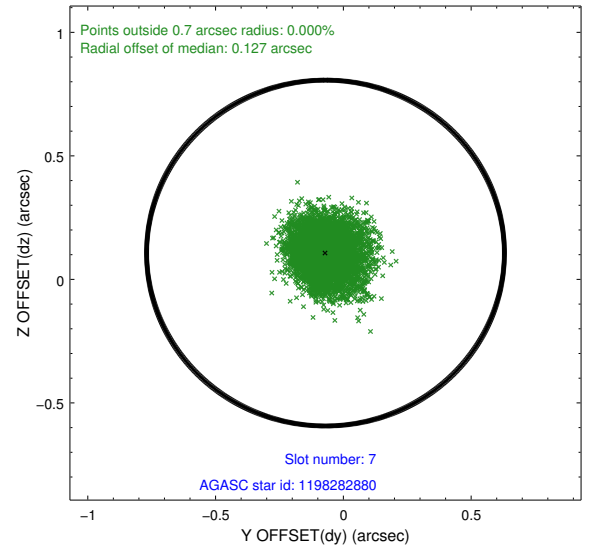
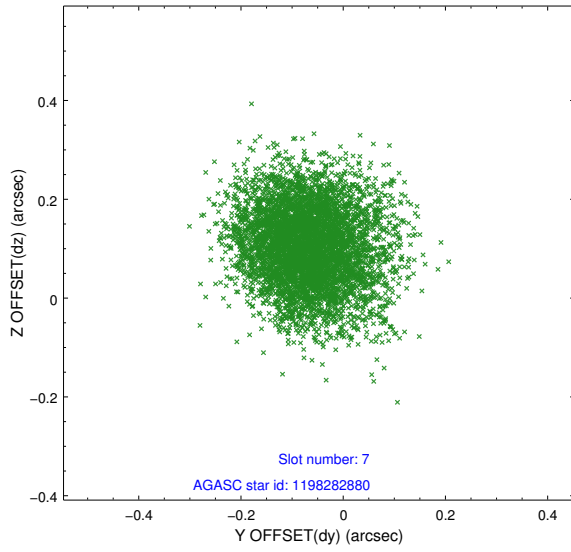
2.4.3 Slot 5



2.4.4 Slot 6

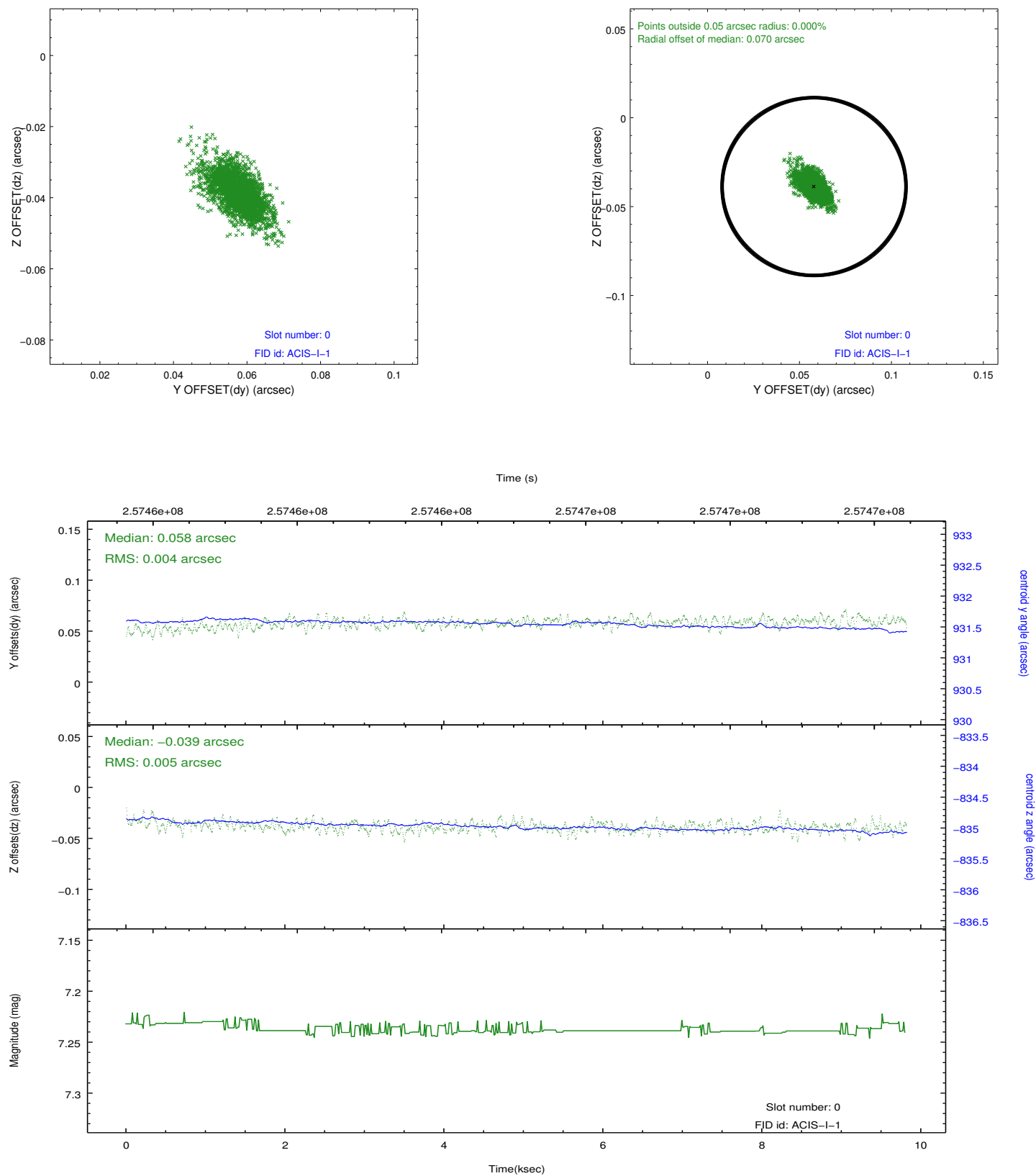


2.4.5 Slot 7

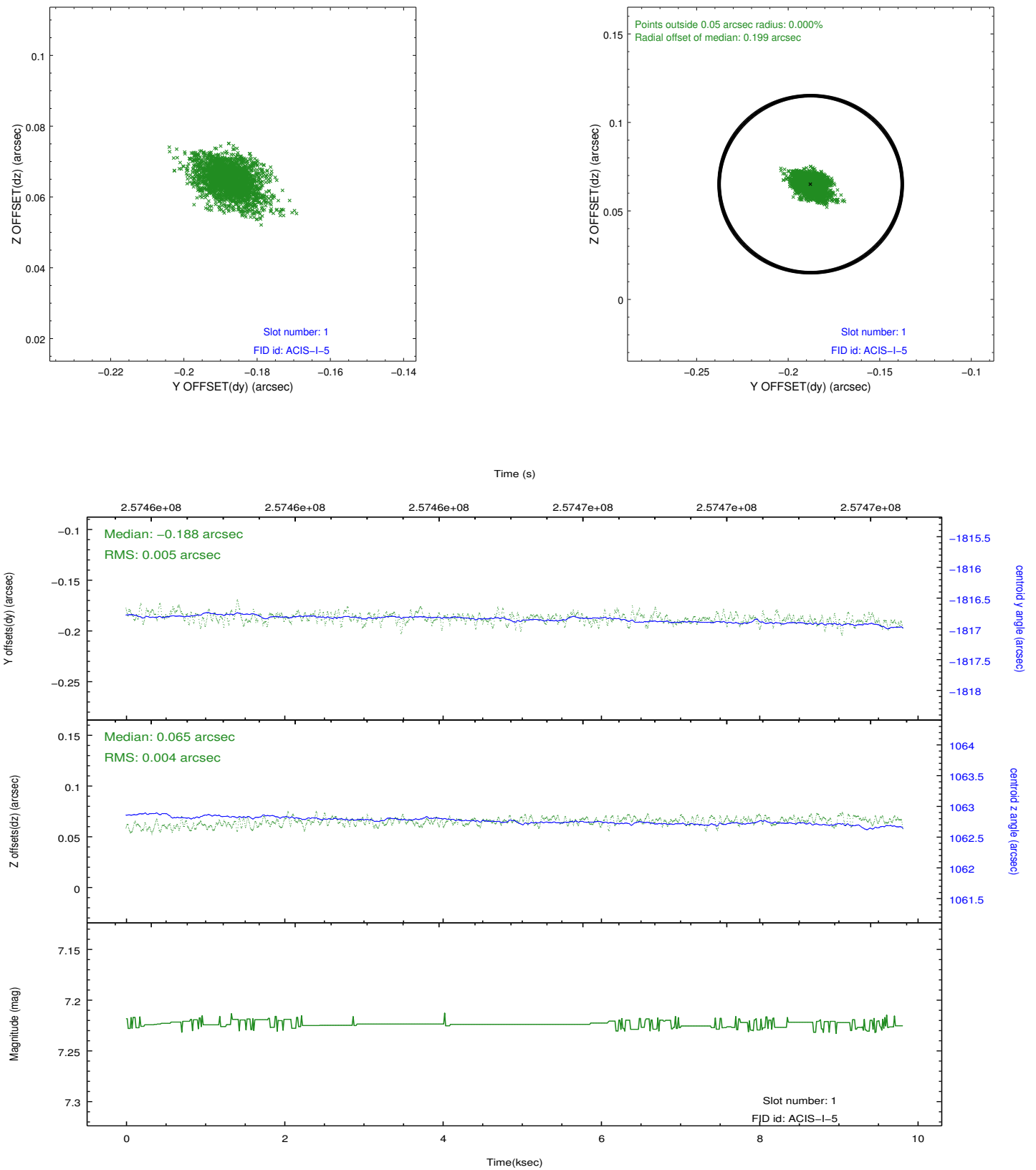


2.5 FID Slots

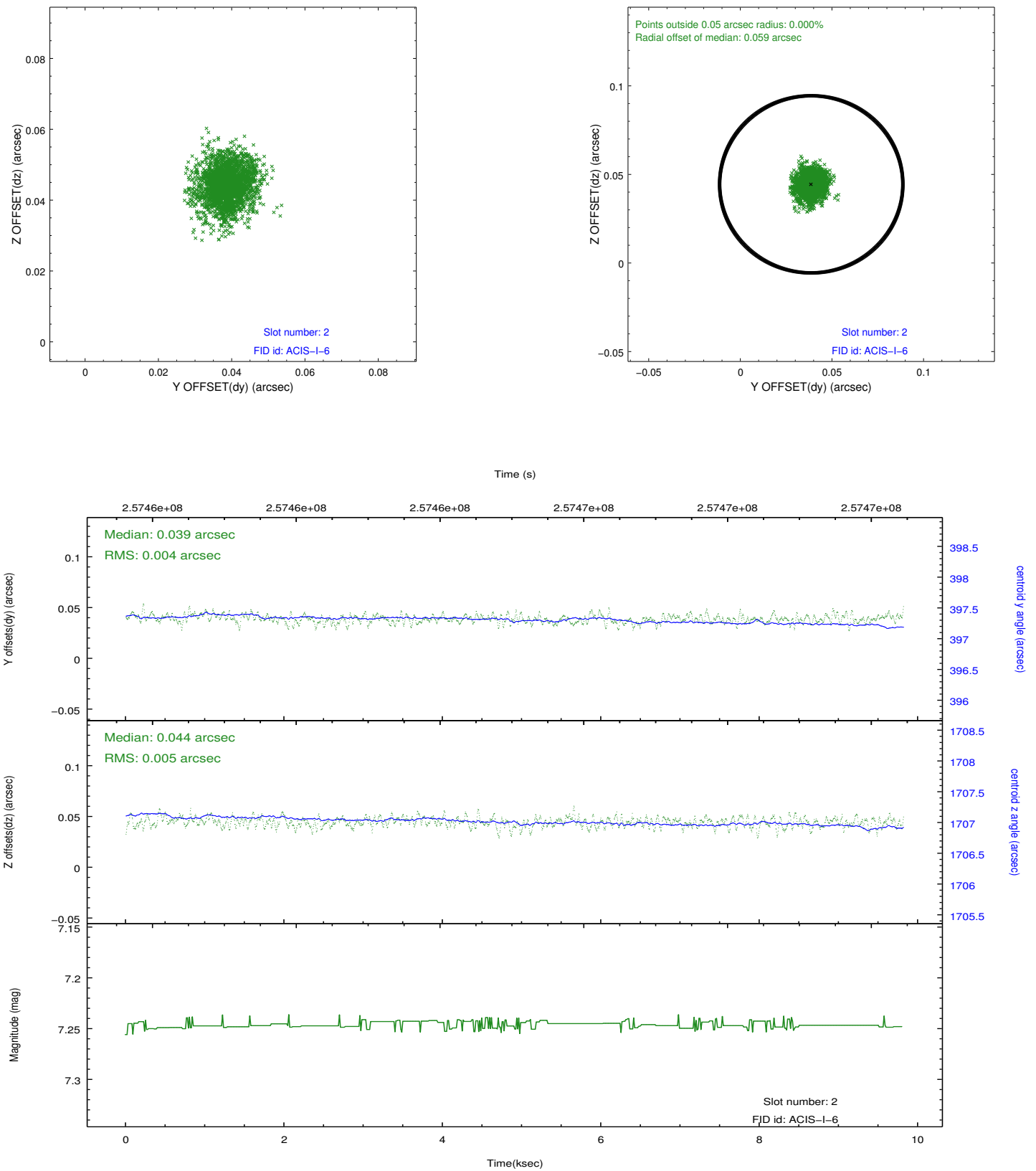
2.5.1 Slot 0



2.5.2 Slot 1



2.5.3 Slot 2



A Summary

A.1 Status

V&V Scientist	Jen Lauer
V&V Date (YYYY-MM-DD)	2012.03.27
V&V Edition	1
V&V Disposition and Status	OK
V&V Charge Time	9.80475899

A.2 Comments