

V&V Reference Report

L2 ASCDS Version : 8.5.1.1

Observation 5476 - L2 Version 3
Chandra X-Ray Center

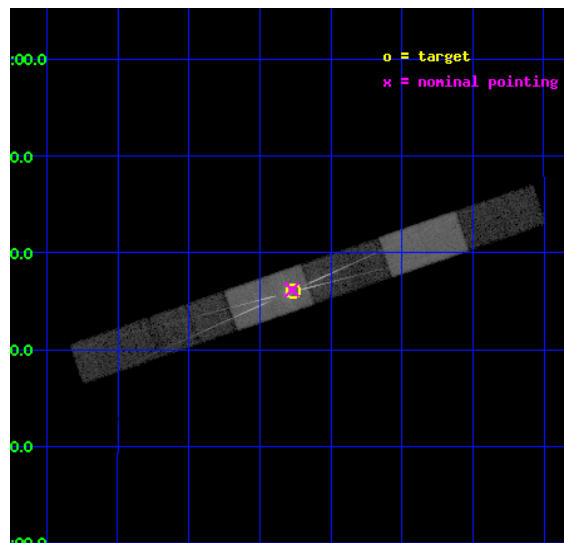
L2 Processing Date : Dec 25 2012

Contents

1	Front	2
2	OBI	3
2.1	OBI	3
2.1.1	Images	3
2.1.2	Bias	3
2.1.3	Parameters	4
2.1.4	Events	4
2.2	Compared Parameters	5
2.3	Aspect	6
2.4	Star Slots	9
2.4.1	Slot 3	9
2.4.2	Slot 4	10
2.4.3	Slot 5	11
2.4.4	Slot 6	12
2.4.5	Slot 7	13
2.5	FID Slots	14
2.5.1	Slot 0	14
2.5.2	Slot 1	15
2.5.3	Slot 2	16
3	Gratings	17
3.1	HEG Arm	17
3.2	MEG Arm	19
A	Summary	21
A.1	Status	21
A.2	Comments	21

1 Front

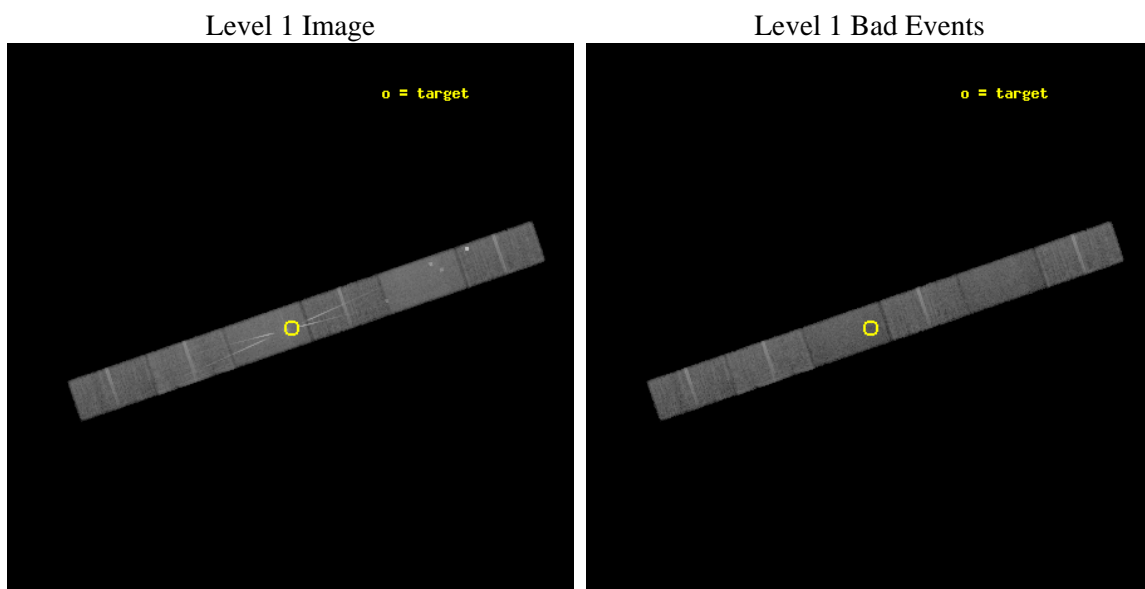
seq_num	400406	Sequence number
obs_id	5476	Observation id
title	X-RAY DIAGNOSTICS OF THE WIND OF HMXB X1908+075: POSSIBLE PROGENITOR BH-NS SYSTEM	Proposal title
observer	Prof. Saul Rappaport	Principal investigator
object	X1908+075: Low N _H	Source name
dtcycle	0	
cycle	P	events from which exps? Prim/Second/Both
ra_targ	287.691667	Observer's specified target RA [deg]
dec_targ	7.601944	Observer's specified target Dec [deg]
ra_nom	287.69362637602	Nominal RA [deg]
dec_nom	7.603038859577	Nominal Dec [deg]
roll_nom	161.10357323748	Nominal Roll [deg]
revision	3	Processing version of data
ontime	19177.69986552	Sum of GTIs [s]
livetime	18725.640864876	Livetime [s]
ontime4	19177.69986552	Sum of GTIs [s]
ontime5	19177.69986552	Sum of GTIs [s]
ontime6	19177.69986552	Sum of GTIs [s]
ontime7	19177.69986552	Sum of GTIs [s]
ontime8	19177.69986552	Sum of GTIs [s]
ontime9	19177.69986552	Sum of GTIs [s]
l2events	167570	Number of level 2 events



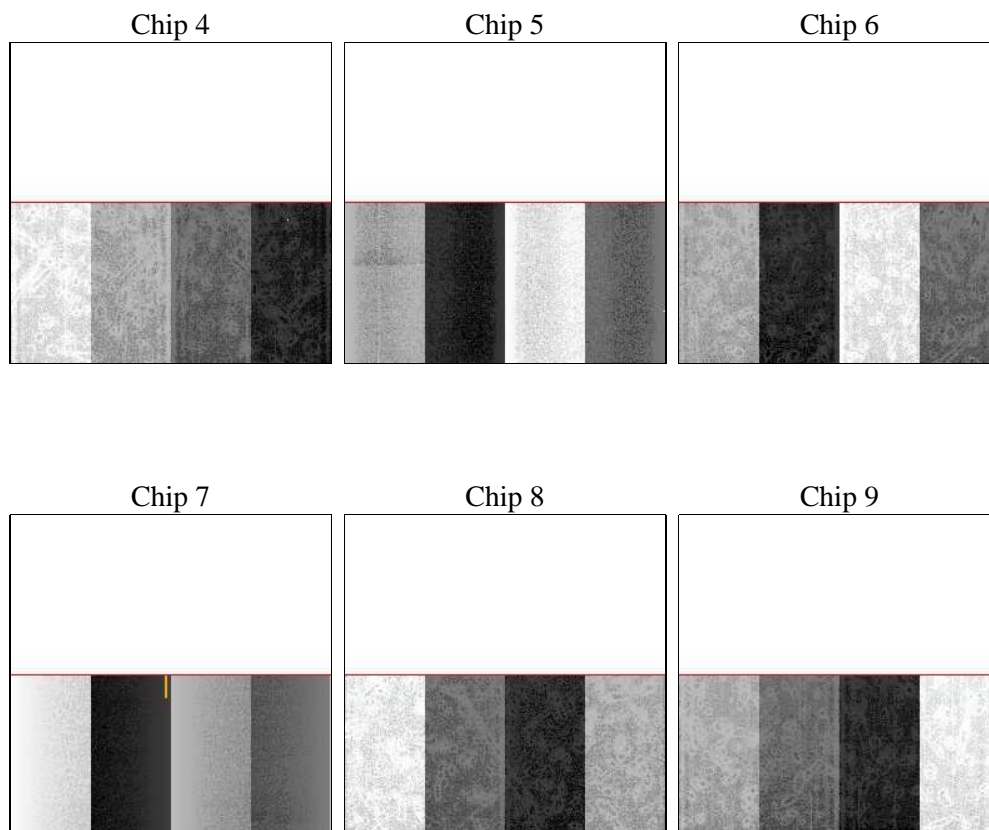
2 OBI

2.1 OBI

2.1.1 Images



2.1.2 Bias



2.1.3 Parameters

obi_num	0	Obi number	sched_exp_time	19000.000000	[s] Scheduled observation exposure time
ascdsver	8.5.1.1	Processing system revision	ontime	19177.69986552	Sum of GTIs [s]
caldsver	4.5.5	 	ontime4	19177.69986552	Sum of GTIs [s]
date	2012-12-25T06:55:36	Date and time of file creation	ontime5	19177.69986552	Sum of GTIs [s]
revision	3	Processing version of data	ontime6	19177.69986552	Sum of GTIs [s]
			ontime7	19177.69986552	Sum of GTIs [s]
			ontime8	19177.69986552	Sum of GTIs [s]
			ontime9	19177.69986552	Sum of GTIs [s]
			l1events	636346	Number of level 1 events

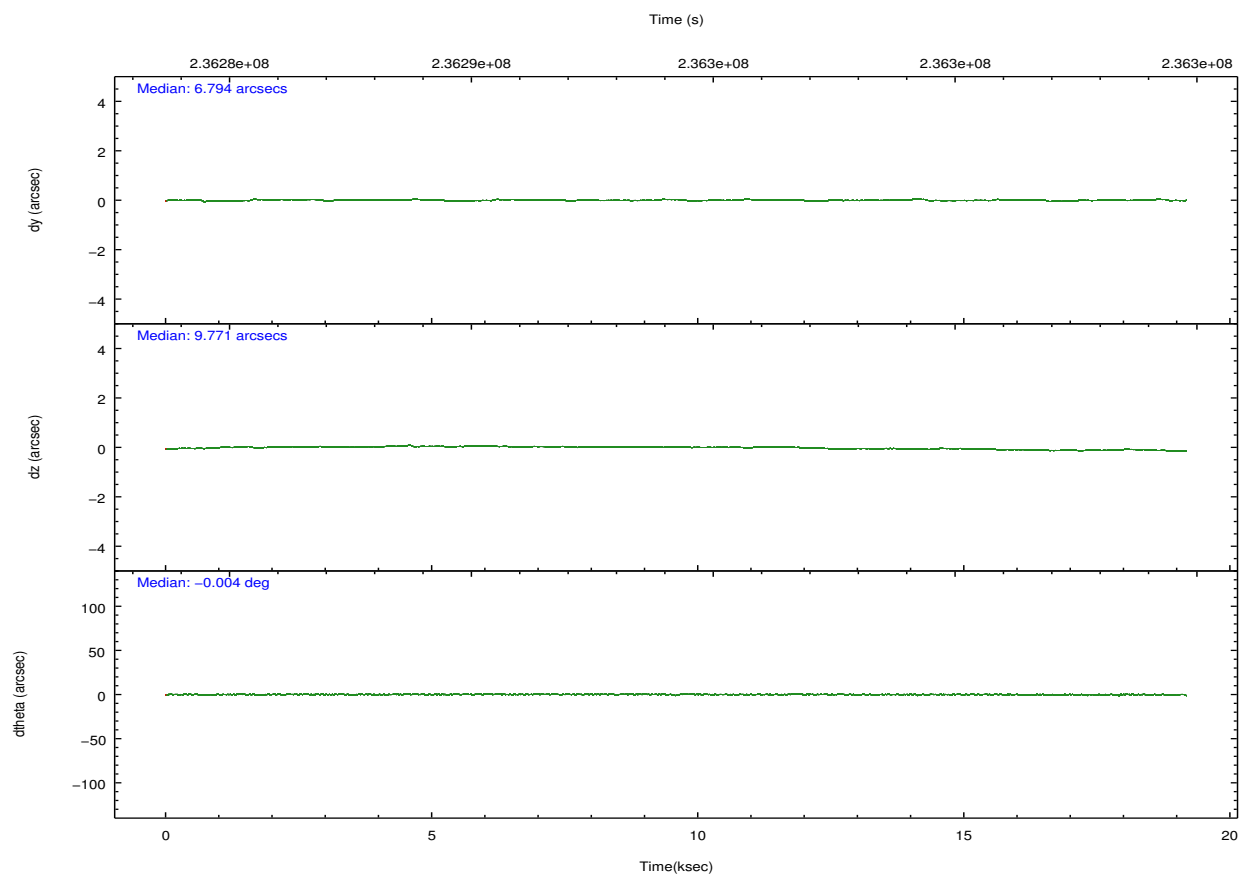
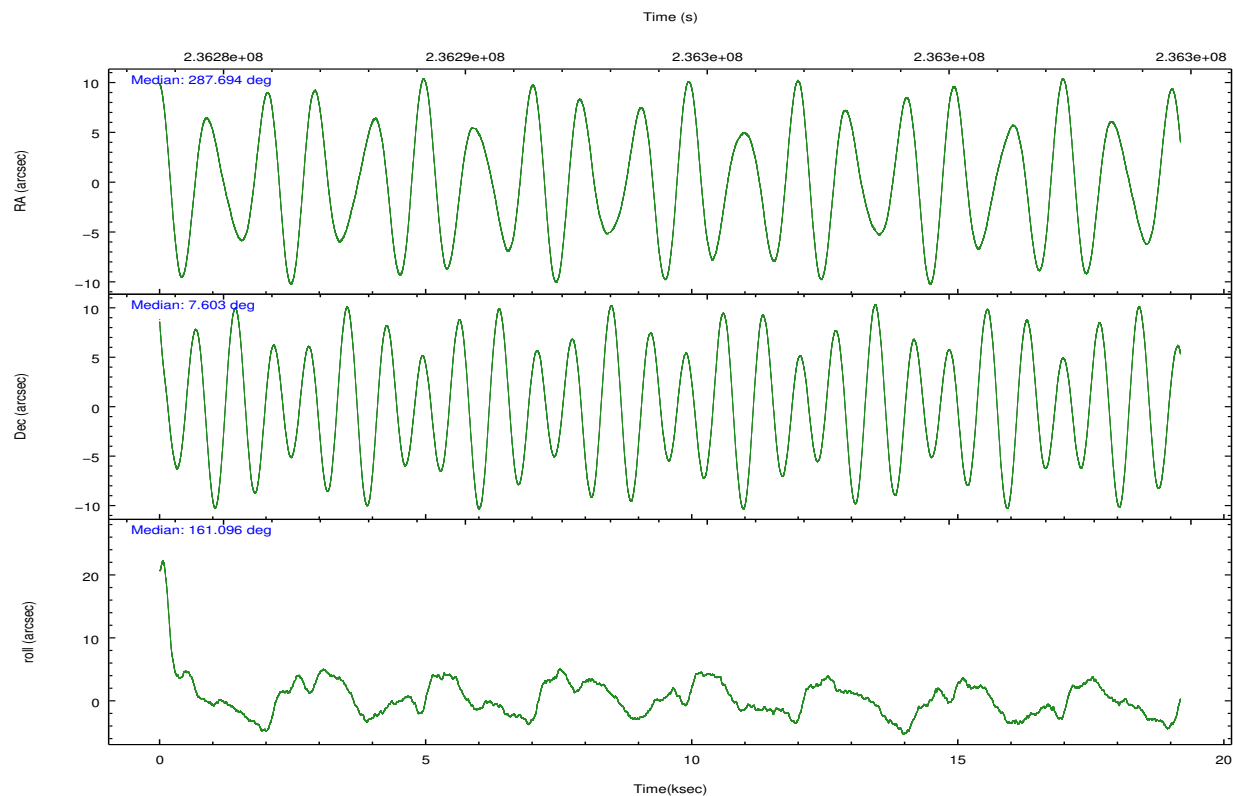
2.1.4 Events

	ccd 4	ccd 5	ccd 6	ccd 7	ccd 8	ccd 9		ccd 4	ccd 5	ccd 6	ccd 7	ccd 8	ccd 9
level 1 events	99534	116898	95185	138772	105732	80225	grade 0 events	14876	6421	10902	9414	7827	3920
rejected events	78624	63039	74665	65551	82518	70277		14%	5%	11%	6%	7%	4%
rejected %	78%	53%	78%	47%	78%	87%	grade 1 events	89	225	64	395	59	40
								0%	0%	0%	0%	0%	0%
							grade 2 events	2142	15068	3511	15401	4794	1822
								2%	12%	3%	11%	4%	2%
							grade 3 events	1236	2631	1694	6936	2525	1157
								1%	2%	1%	4%	2%	1%
							grade 4 events	1165	2521	1657	6947	2417	1157
								1%	2%	1%	5%	2%	1%
							grade 5 events	3191	8739	3386	11080	4508	3551
								3%	7%	3%	7%	4%	4%
							grade 6 events	1649	27719	2893	35132	5788	1970
								1%	23%	3%	25%	5%	2%
							grade 7 events	75186	53574	71078	53467	77814	66608
								75%	45%	74%	38%	73%	83%

2.2 Compared Parameters

Parameter	Planned	Actual	Parameter	Planned	Actual
Instrument	ACIS	ACIS	Obspar format version number	7	7
Detector	ACIS-456789	ACIS-456789	Obspar file type	PREDICTED	ACTUAL
Grating	HETG	HETG	Obspar update status	NONE	UPDATED
Data mode	FAINT	FAINT	Number of optional ACIS chips dropped	0	0
Observation mode	POINTING	POINTING	On-chip summing requested	N	N
[deg] Pointing RA	287.720510	287.6936263760192	Subarray requested	CUSTOM	1/2
[deg] Pointing Dec	7.608647	7.603038859577006	Subarray start row	1	1
[deg] Pointing Roll	160.943396	161.1035732374828	Subarray row count	512	512
[mm] SIM focus pos	-0.684267	-0.6828225247311905	Alternating exposures requested	N	N
[mm] SIM defocus	0	0.001444936568705701	[s] Primary exposure time	0.000000	1.7
[mm] SIM translation stage pos	-183.992523	-183.985022191653			
[mm] SIM translation stage offset	-6.14	-6.147500391354811			
Phase constraints	Y	Y			
[d] Phase period	4.400700	4.400700			
[d] Phase epoch (MJD)	52631.383000	52631.383000			
Phase start	0.434200	0.434200			
Phase end	0.565800	0.565800			
Phase start error	0.134200	0.134200			
Phase end error	0.134200	0.134200			
[s] Observation start time (MET)	236284825.184000	236283852.30919			
Observation start date	2005-06-27T18:39:21	2005-06-27T18:24:12			
[s] Observation end time (MET)	236303825.184000	236304906.32265			
Observation end date	2005-06-27T23:56:01	2005-06-28T00:15:06			
Read mode	TIMED	TIMED			

2.3 Aspect

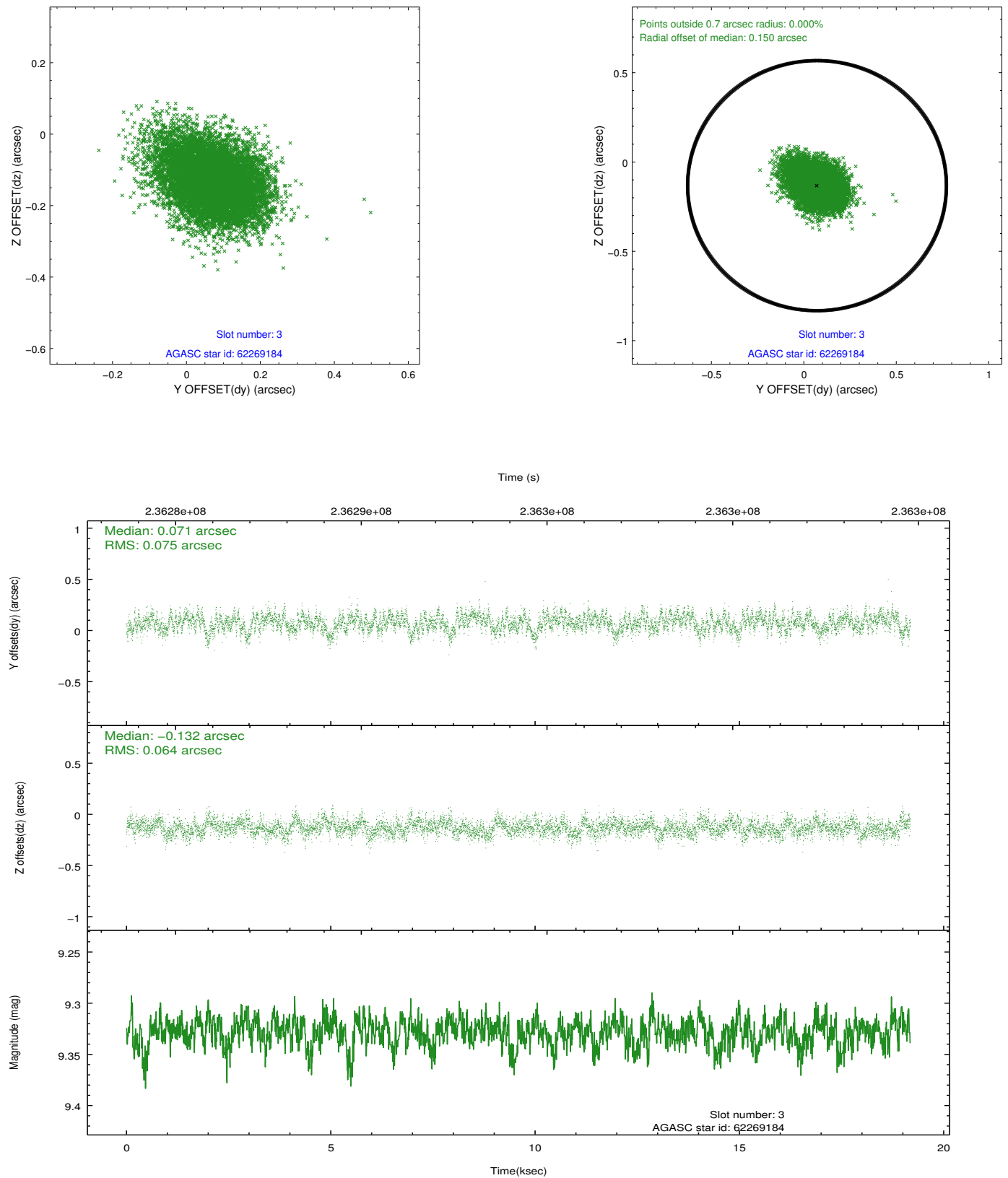


Slot Statistics

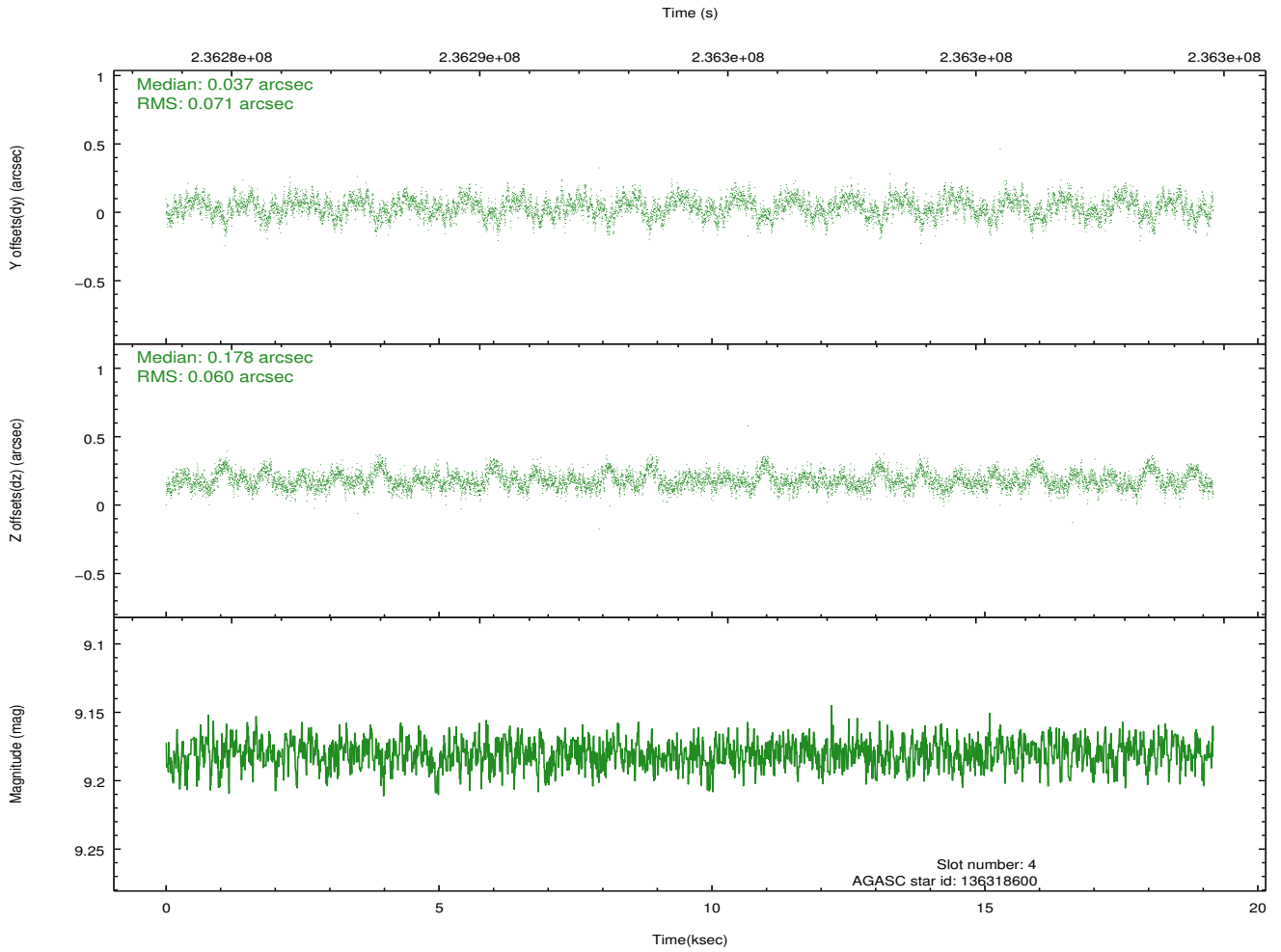
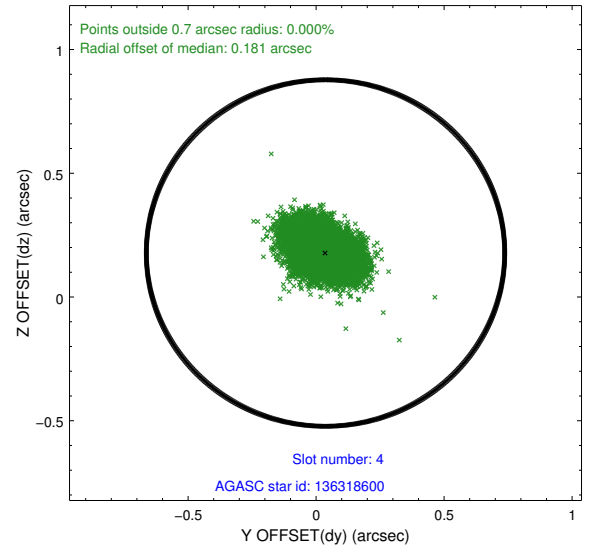
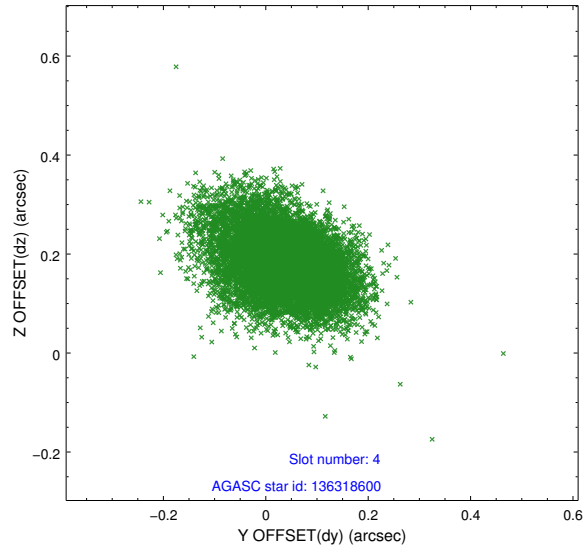
slot	status	id	mag	n_pts	med_dy	med_dz	dr1	dr2	ra	dec	mean_y	mean_z
0	FID	ACIS-S-2	7.08	4679	-0.065	-0.116	0.007	0.012	0.000000	0.000000	-759.18	-1857.81
1	FID	ACIS-S-4	7.18	4678	0.114	0.062	0.006	0.010	0.000000	0.000000	2154.19	50.60
2	FID	ACIS-S-5	7.23	4678	-0.080	0.062	0.007	0.011	0.000000	0.000000	-1811.77	44.51
3	GUIDE	62269184	9.33	9354	0.071	-0.132	0.104	0.173	288.138932	6.932418	-2207.83	1812.51
4	GUIDE	136318600	9.18	9347	0.037	0.178	0.098	0.163	287.193672	7.971966	2203.08	-623.20
5	GUIDE	136450656	10.09	9355	-0.306	0.096	0.134	0.215	287.814143	8.235606	422.27	-2241.99
6	GUIDE	136451568	9.68	9346	0.135	0.040	0.104	0.171	287.608270	8.059160	908.49	-1402.23
7	GUIDE	136446056	9.36	9337	0.067	-0.187	0.089	0.145	287.496360	7.664883	822.59	69.53

2.4 Star Slots

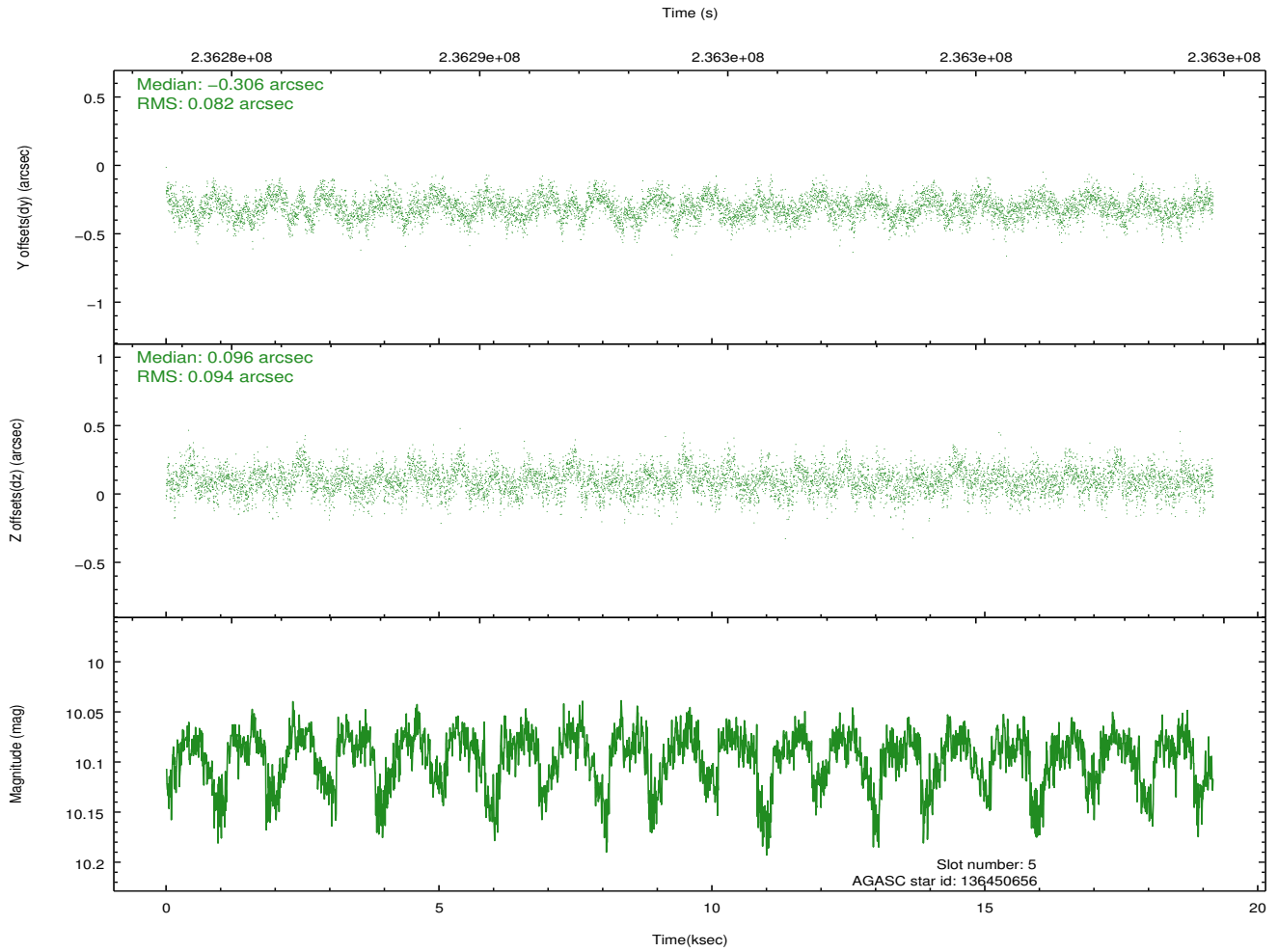
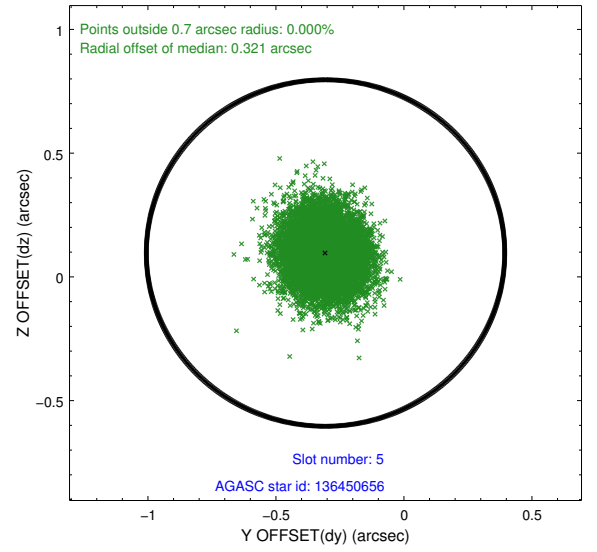
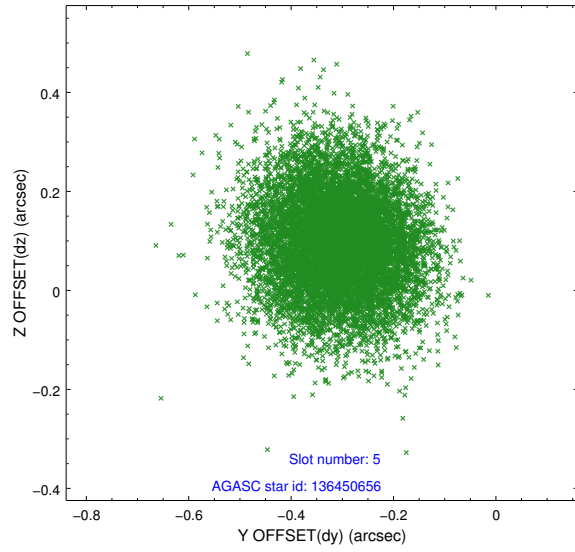
2.4.1 Slot 3



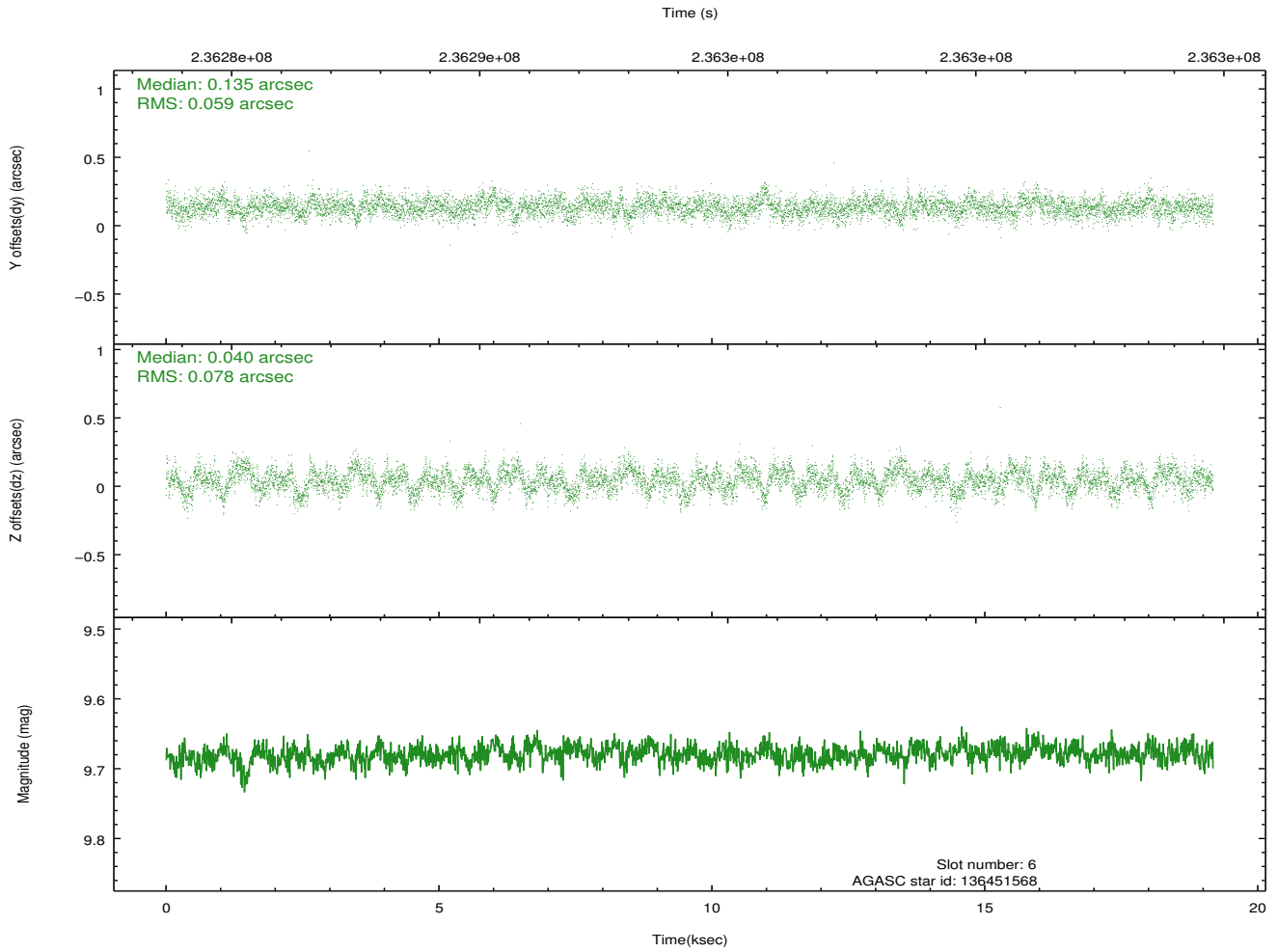
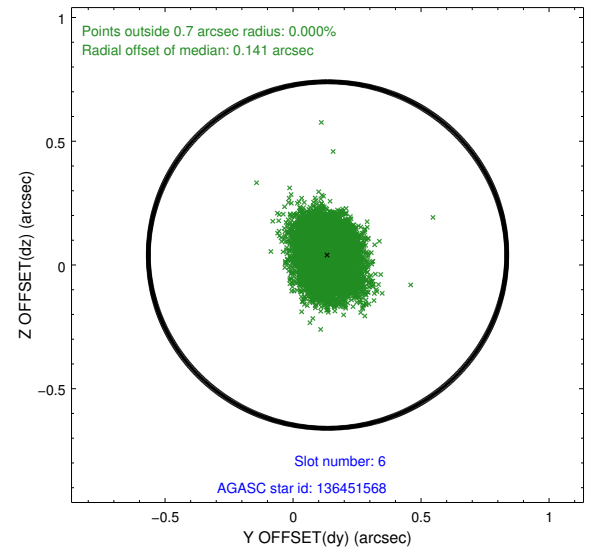
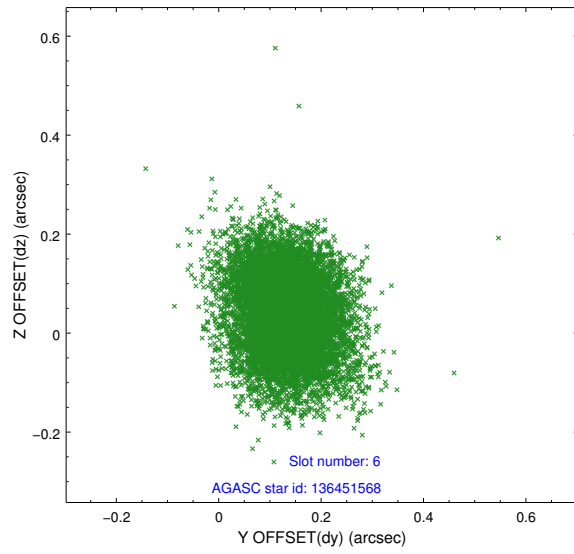
2.4.2 Slot 4



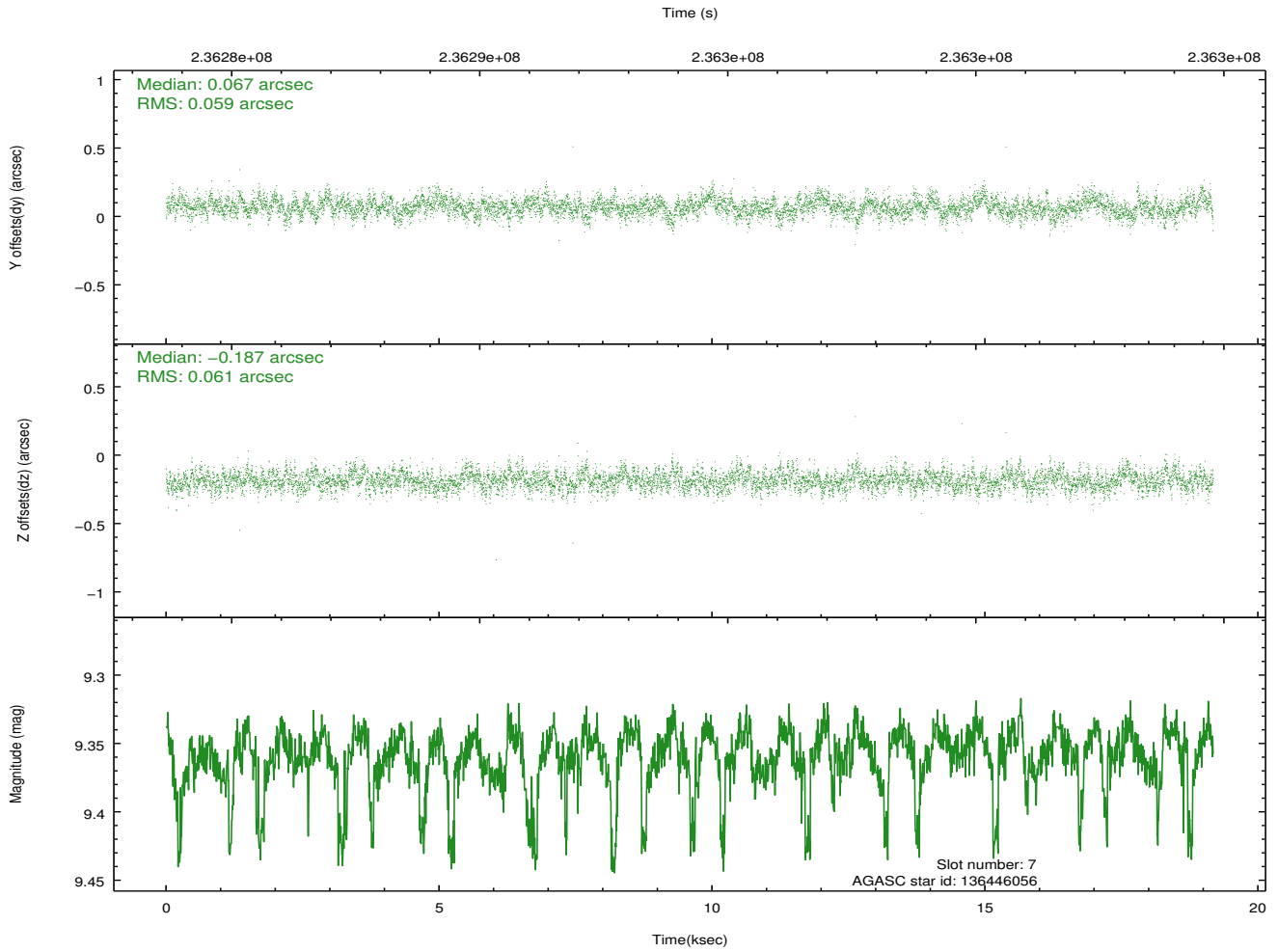
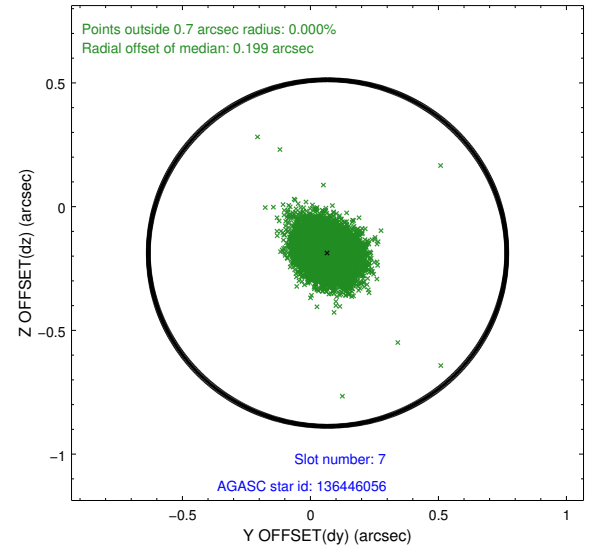
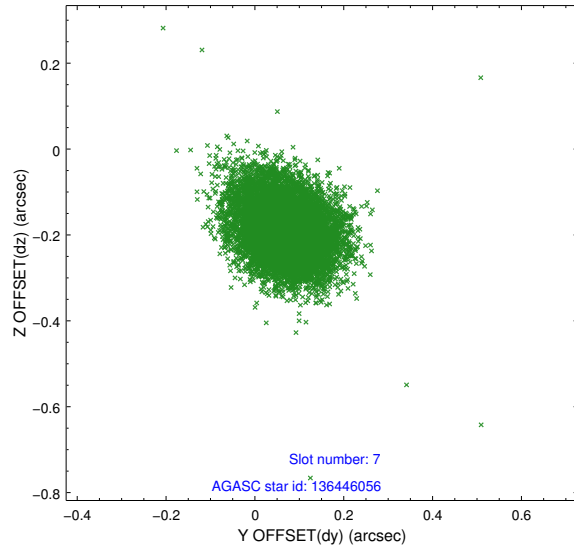
2.4.3 Slot 5



2.4.4 Slot 6

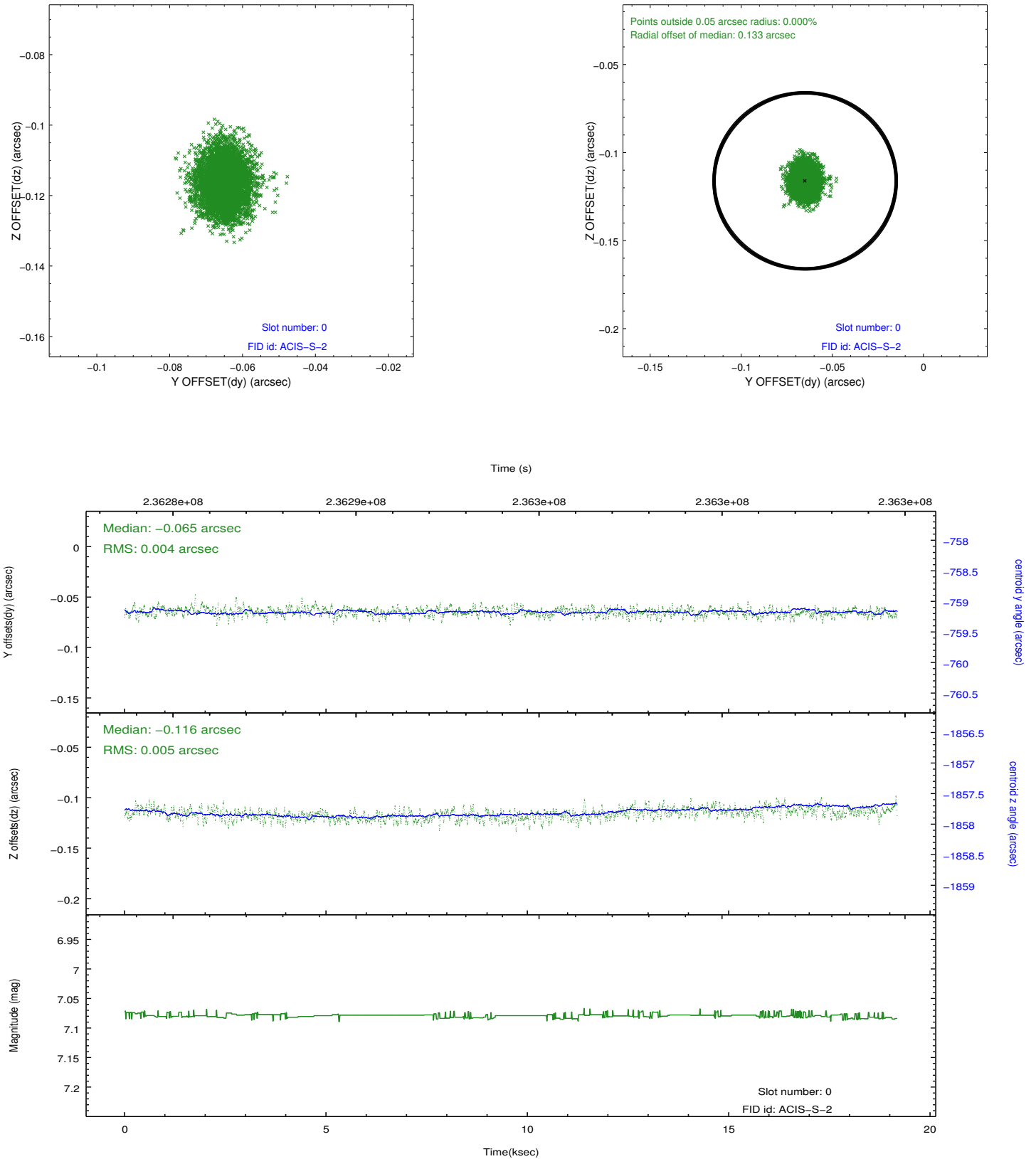


2.4.5 Slot 7

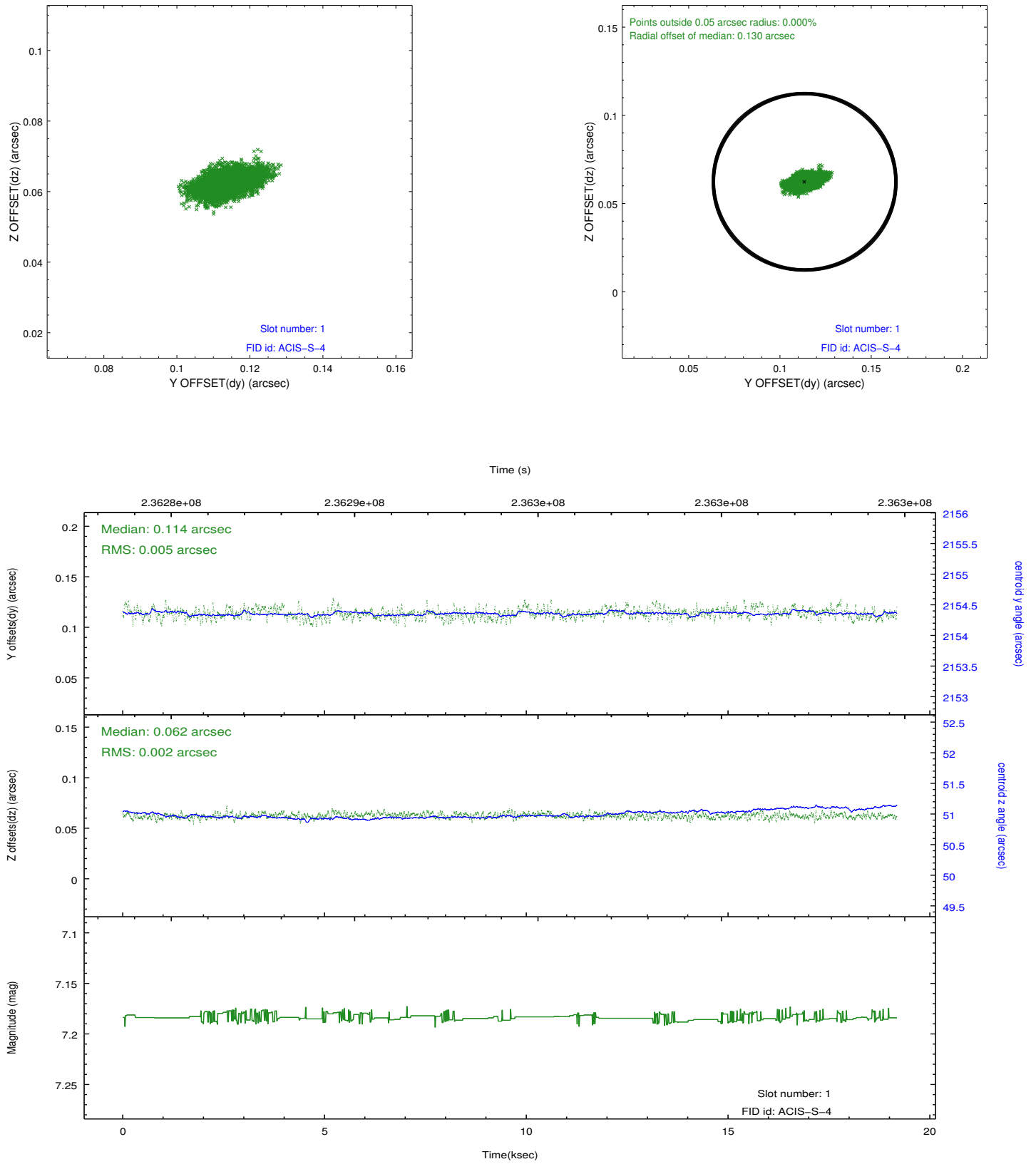


2.5 FID Slots

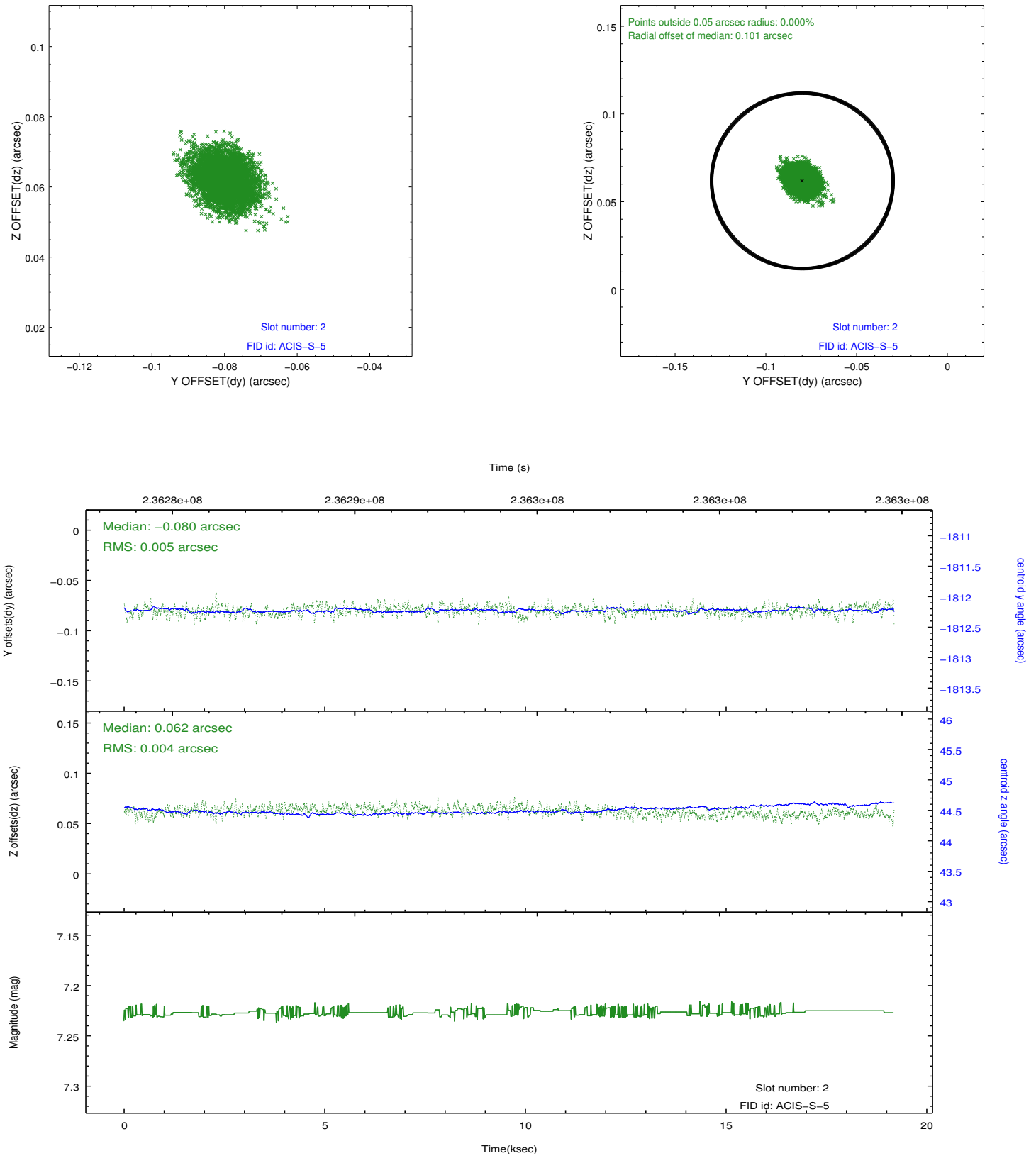
2.5.1 Slot 0



2.5.2 Slot 1



2.5.3 Slot 2

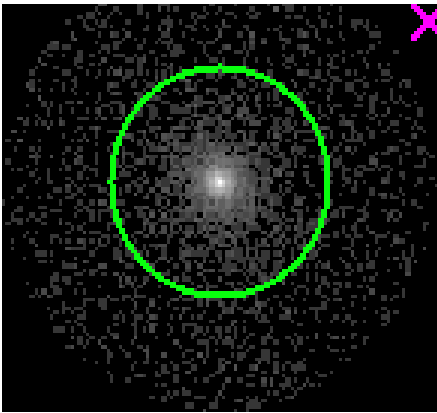


3 Gratings

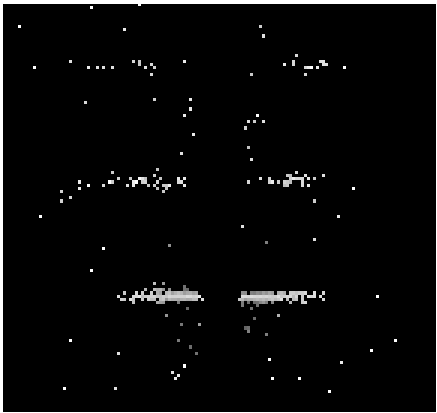
3.1 HEG Arm



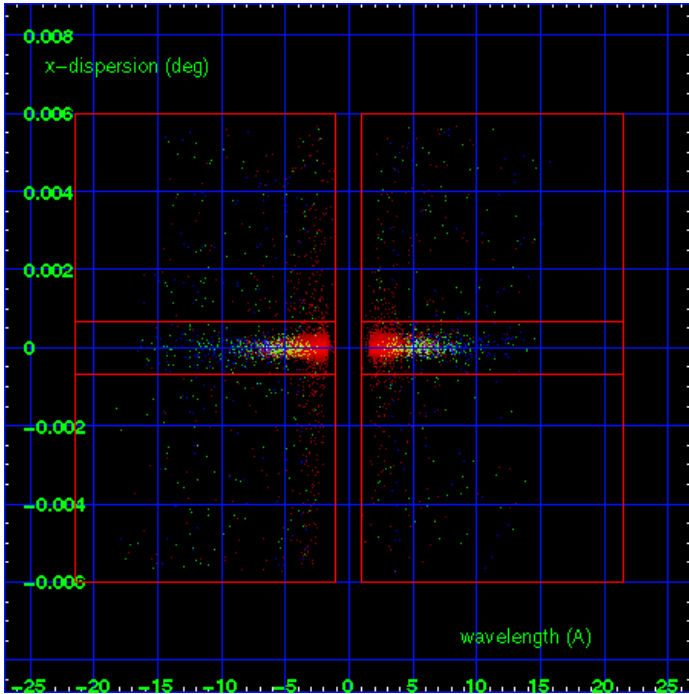
HEG Order Sort 123



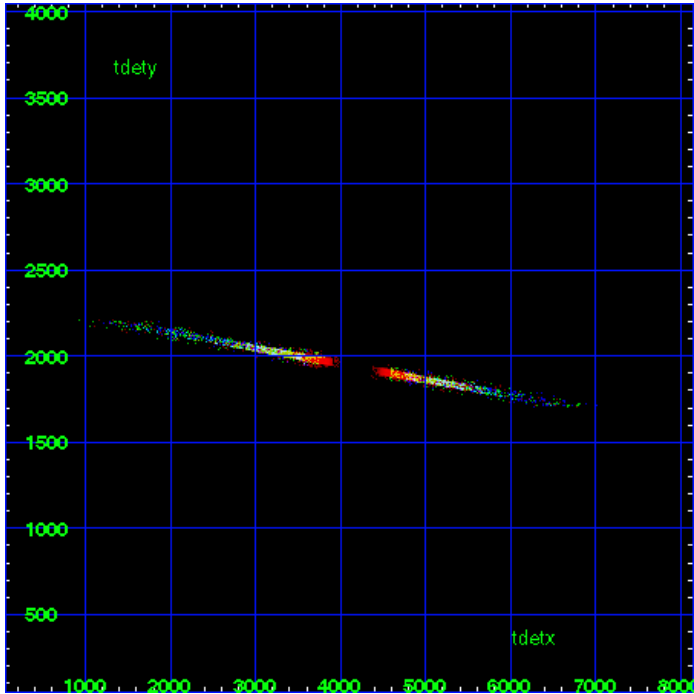
HEG Zero Order



HEG Order Sort ALL

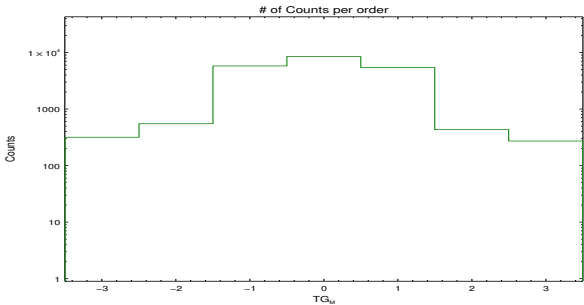


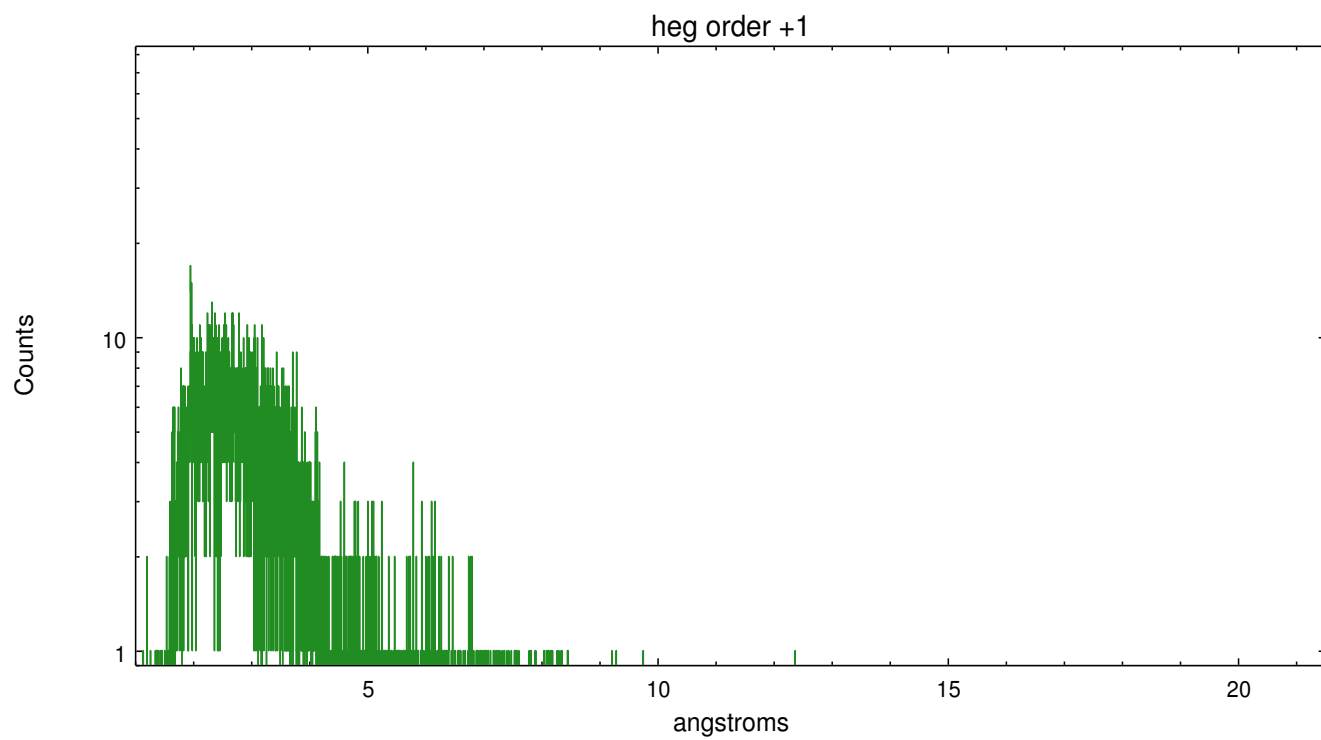
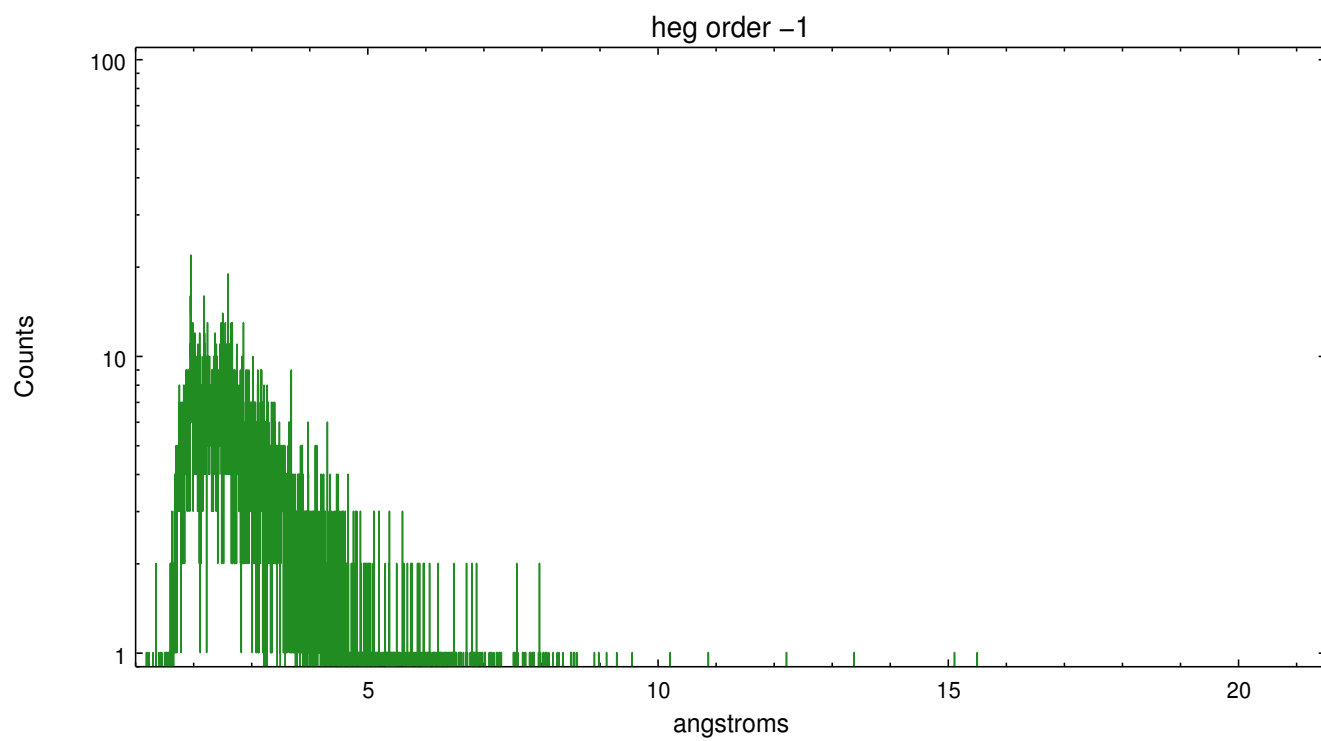
Spot Image HEG



Full Detector HEG

	order -3	order -2	order -1	order 0	order 1	order 2	order 3
Events	317	552	5820	8553	5451	433	272

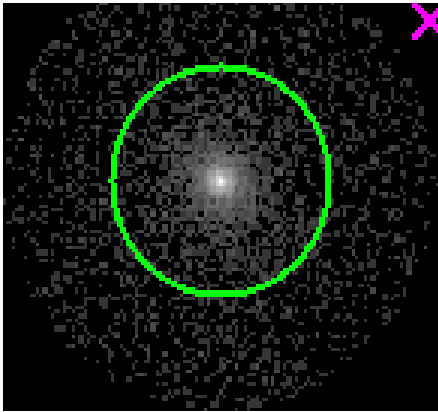




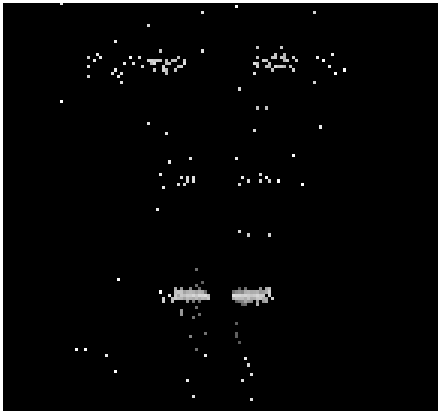
3.2 MEG Arm



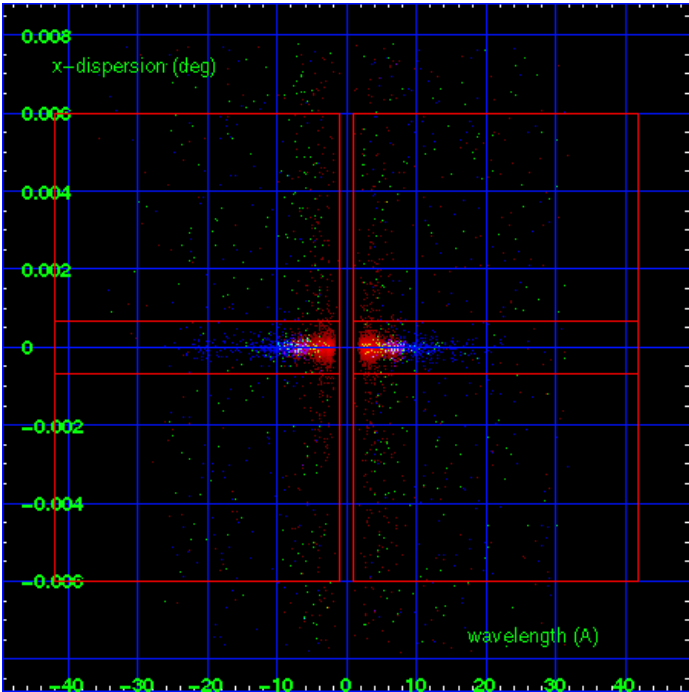
MEG Order Sort 123



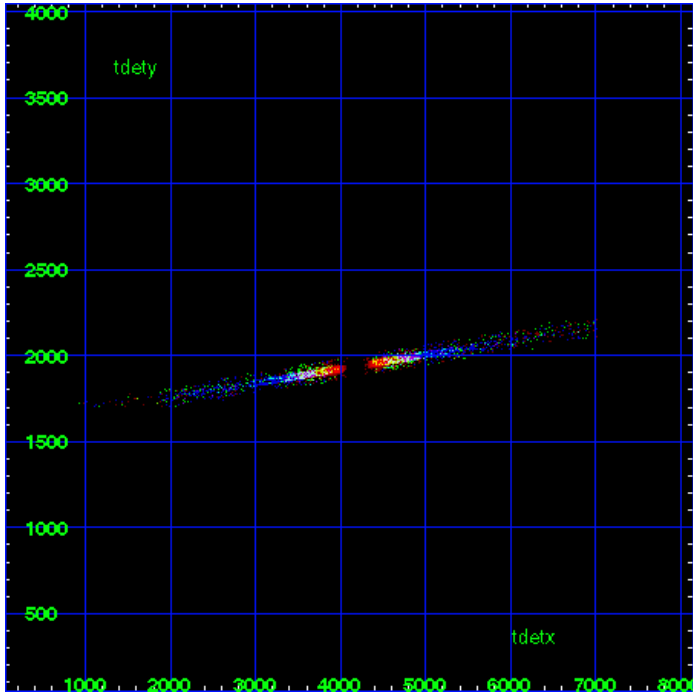
MEG Zero Order



MEG Order Sort ALL

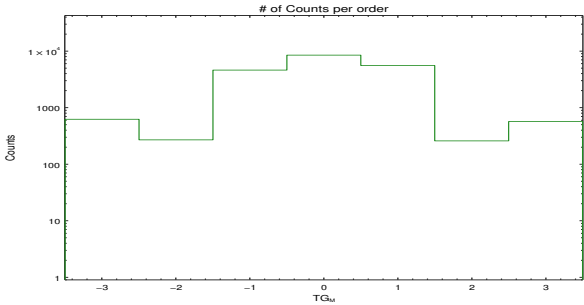


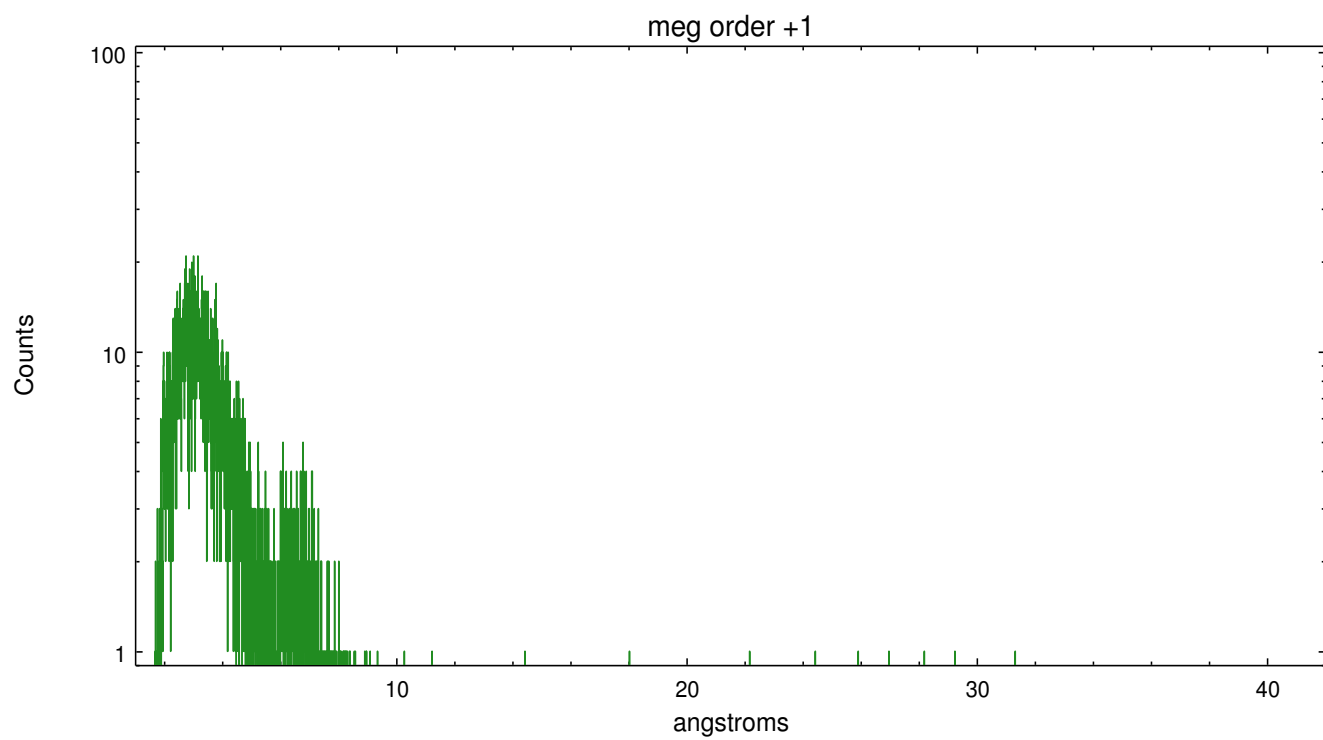
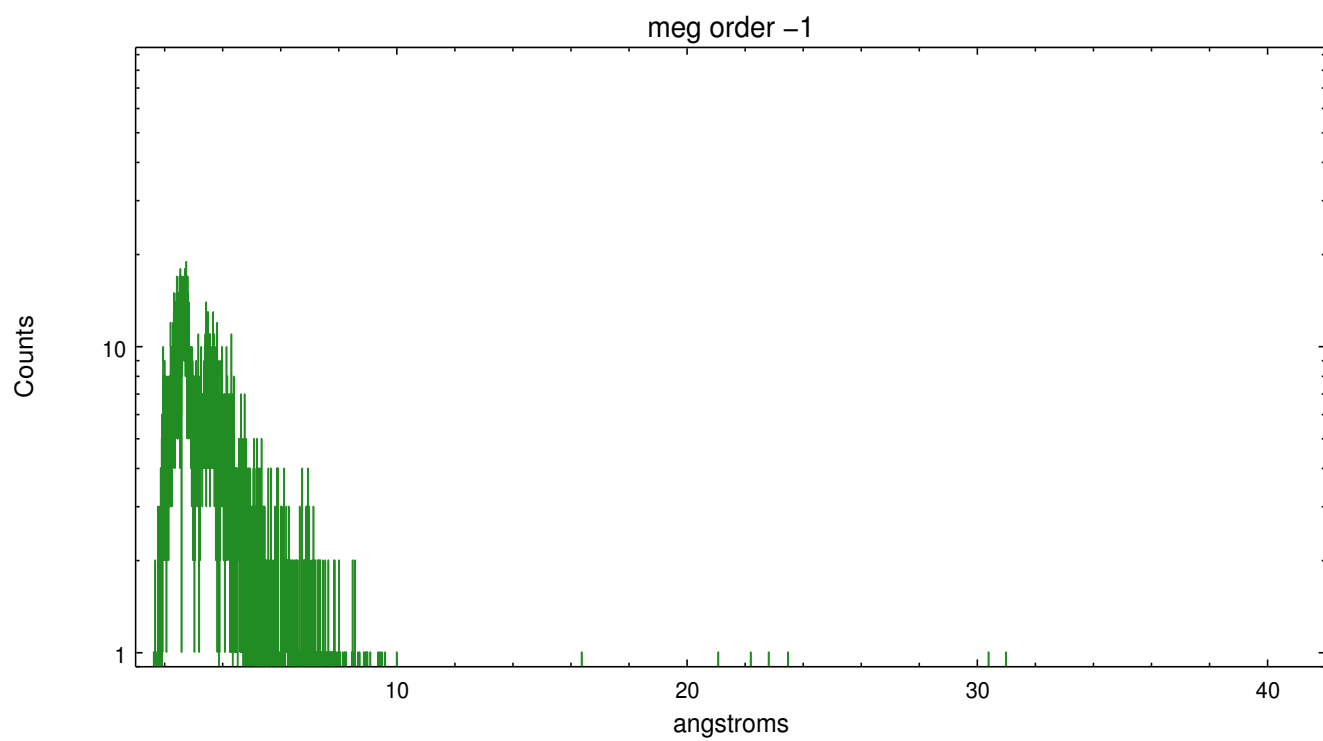
Spot Image MEG



Full Detector MEG

	order -3	order -2	order -1	order 0	order 1	order 2	order 3
Events	625	270	4647	8553	5599	259	570





A Summary

A.1 Status

V&V Scientist	Joy Nichols
V&V Date (YYYY-MM-DD)	2013.01.18
V&V Edition	1
V&V Disposition and Status	OK
V&V Charge Time	19.17769

A.2 Comments