

# V&V Reference Report

## L2 ASCDS Version : 7.6.7.1

Observation 5474 - L2 Version 002  
Chandra X-Ray Center

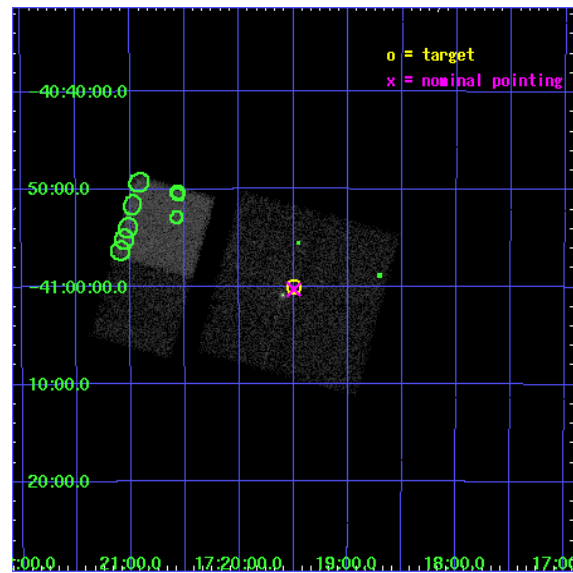
L2 Processing Date : Mar 15 2006

## Contents

<b>1</b>	<b>Front</b>	<b>2</b>
<b>2</b>	<b>OBI</b>	<b>3</b>
2.1	OBI . . . . .	3
2.1.1	Images . . . . .	3
2.1.2	Bias . . . . .	3
2.1.3	Parameters . . . . .	4
2.1.4	Events . . . . .	4
2.2	Compared Parameters . . . . .	5
2.3	Aspect . . . . .	6
2.4	Star Slots . . . . .	9
2.4.1	Slot 3 . . . . .	9
2.4.2	Slot 4 . . . . .	10
2.4.3	Slot 5 . . . . .	11
2.4.4	Slot 6 . . . . .	12
2.4.5	Slot 7 . . . . .	13
2.5	FID Slots . . . . .	14
2.5.1	Slot 0 . . . . .	14
2.5.2	Slot 1 . . . . .	15
2.5.3	Slot 2 . . . . .	16
<b>3</b>	<b>Point Sources</b>	<b>17</b>
<b>A</b>	<b>Summary</b>	<b>18</b>
A.1	Status . . . . .	18
A.2	Comments . . . . .	18

# 1 Front

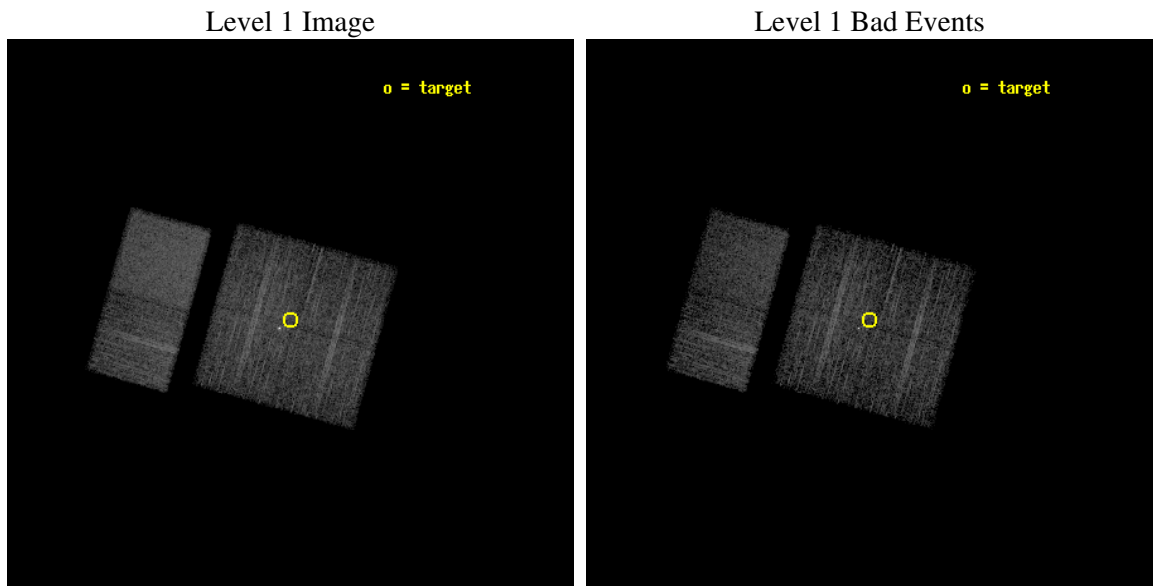
seq_num	400404
obs_id	5474
title	Localization of INTEGRAL-Selected Sources in the Norma Region
observer	Dr. John Tomsick
object	IGR J17195-4100
dtcycle	0
cycle	P
ra_targ	259.875
dec_targ	-41.0
ra_nom	259.87400158416
dec_nom	-41.005159505813
roll_nom	285.704732137
revision	2
ontime	4761.5999822617
livetime	4701.305736195
ontime0	4761.5999822617
ontime1	4761.5999822617
ontime2	4761.5999822617
ontime3	4761.5999822617
ontime6	4761.5999822617
ontime7	4761.5999822617
l2events	40534



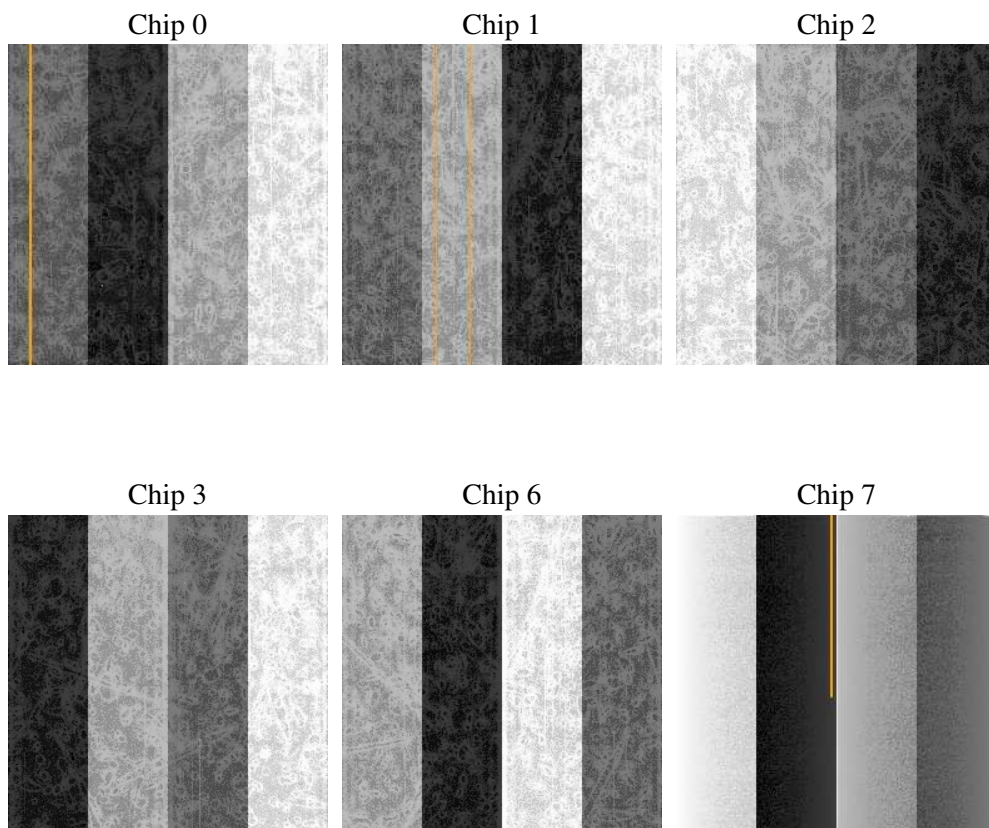
## 2 OBI

### 2.1 OBI

#### 2.1.1 Images



#### 2.1.2 Bias



### 2.1.3 Parameters

obi_num	0
ascdsver	7.6.7.1
caldsver	3.2.1
date	2006-03-15T19:27:56
revision	2

sched_exp_time	5000.000000
ontime	4764.2758980095
ontime0	4764.275868088
ontime1	4764.275868088
ontime2	4764.2759179175
ontime3	4764.2758980095
ontime6	4764.2758980095
ontime7	4764.2758980095
l1events	238218

### 2.1.4 Events

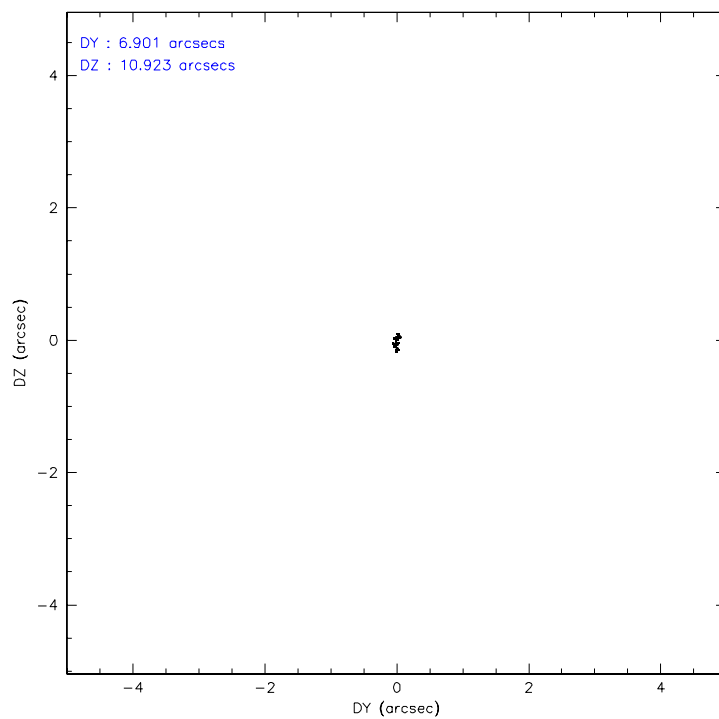
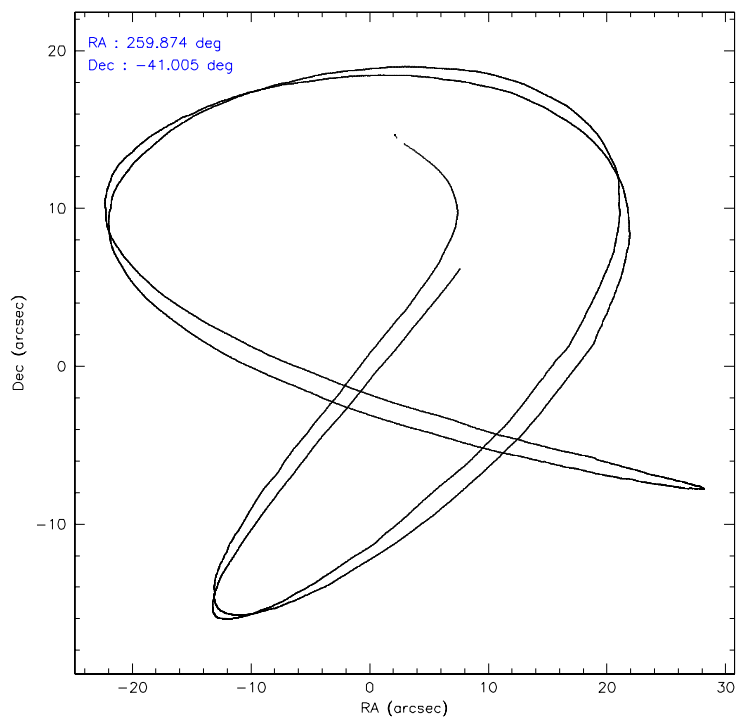
	ccd 0	ccd 1	ccd 2	ccd 3	ccd 6	ccd 7
level 1 events	35504	34596	40079	36747	40164	51128
rejected events	30773	29627	34018	32049	35526	31921
rejected %	86%	85%	84%	87%	88%	62%

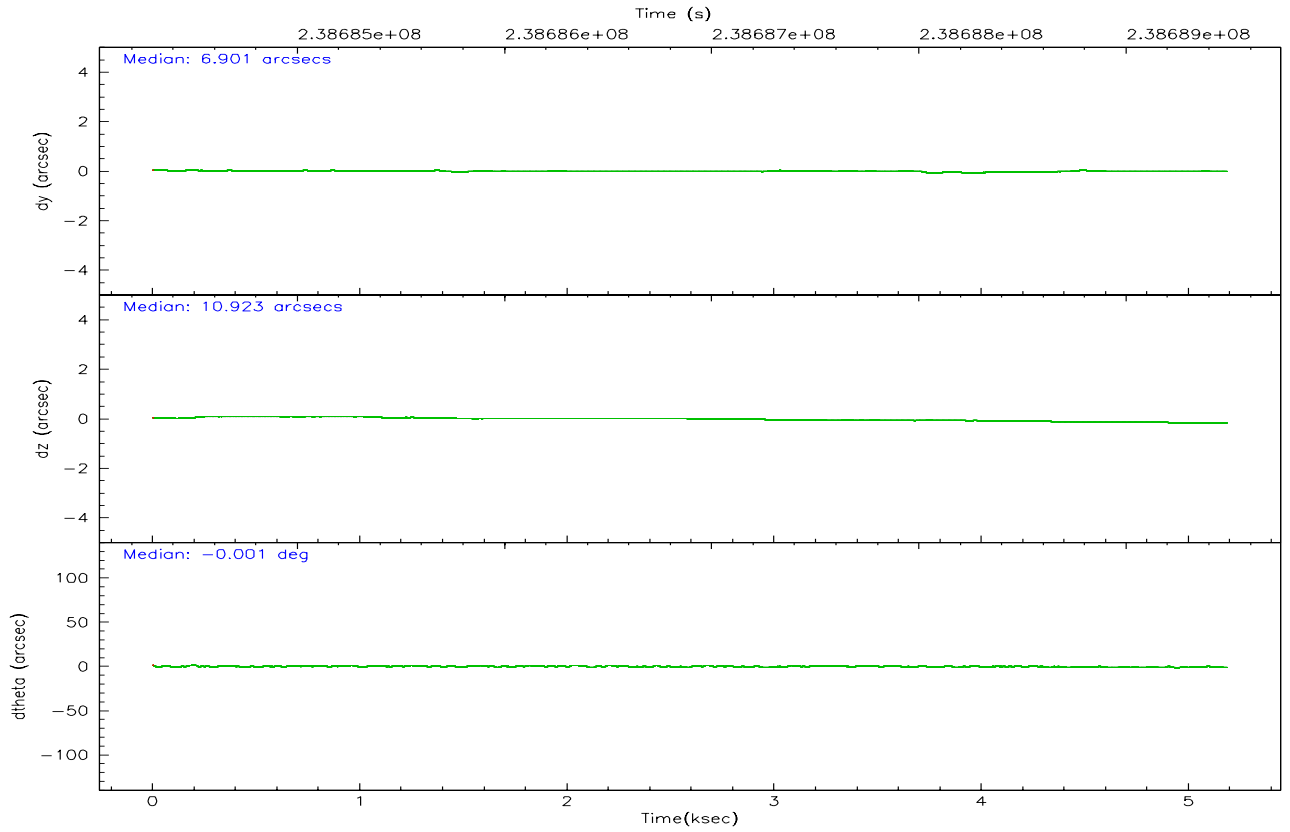
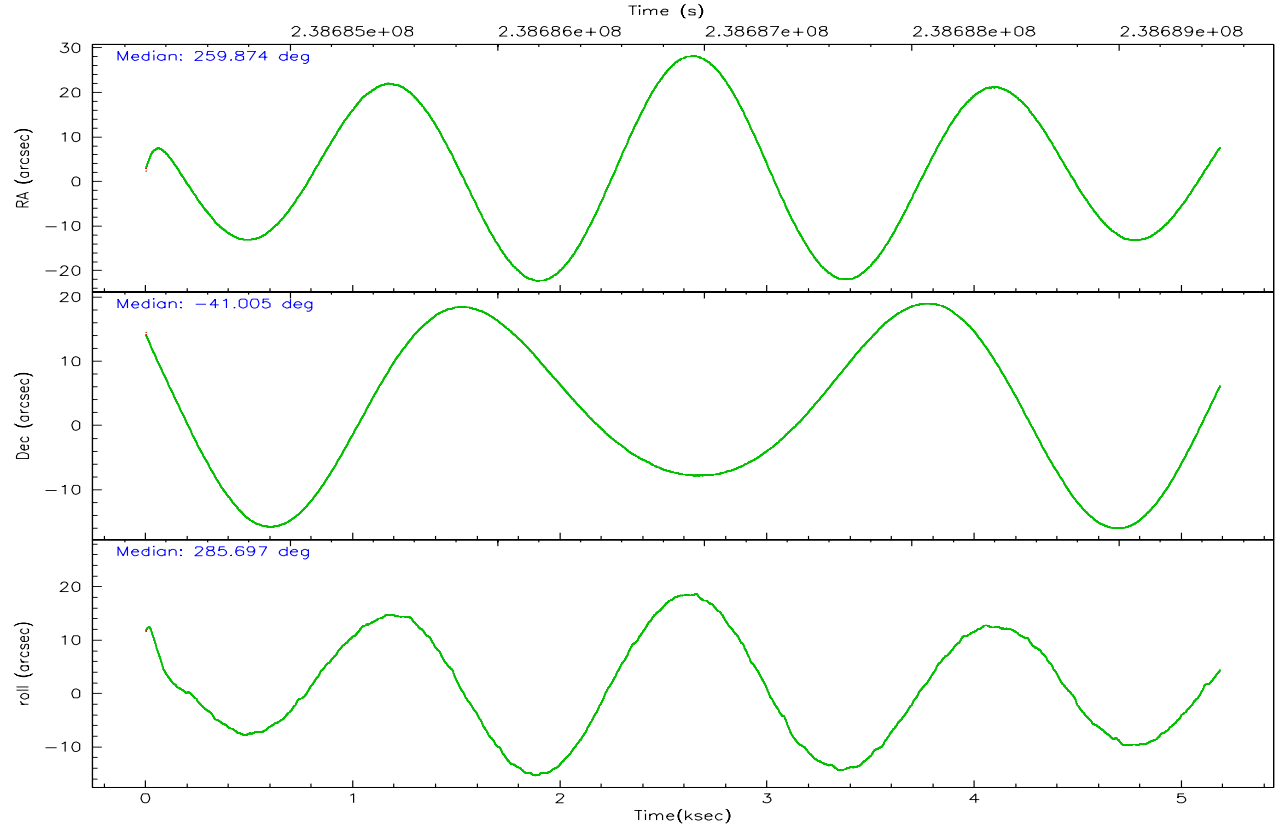
	ccd 0	ccd 1	ccd 2	ccd 3	ccd 6	ccd 7
grade 0 events	2055	2147	2980	2133	1829	1044
	5%	6%	7%	5%	4%	2%
grade 1 events	21	22	165	38	18	32
	0%	0%	0%	0%	0%	0%
grade 2 events	1025	1052	1112	843	982	4740
	2%	3%	2%	2%	2%	9%
grade 3 events	464	456	520	482	439	873
	1%	1%	1%	1%	1%	1%
grade 4 events	399	432	477	474	442	892
	1%	1%	1%	1%	1%	1%
grade 5 events	1547	1540	1716	1690	1797	3276
	4%	4%	4%	4%	4%	6%
grade 6 events	791	886	976	772	950	11666
	2%	2%	2%	2%	2%	22%
grade 7 events	29202	28061	32133	30315	33707	28605
	82%	81%	80%	82%	83%	55%

## 2.2 Compared Parameters

Parameter	Planned	Actual	Parameter	Planned	Actual
Instrument	ACIS	ACIS	Obspar format version number	6	6
Detector	ACIS-012367	ACIS-012367	Obspar file type	PREDICTED	ACTUAL
Grating	NONE	NONE	Obspar update status	NONE	UPDATED
Data mode	FAINT	FAINT	On-chip summing requested	N	N
Observation mode	POINTING	POINTING	Subarray requested	NONE	NONE
Pointing RA	259.848151	259.8740015841623	Alternating exposures requested	N	N
Pointing Dec	-40.985548	-41.00515950581274	Primary exposure time	0.000000	3.2
Pointing Roll	285.479060	285.7047321370029			
SIM focus pos (mm)	-0.782348	-0.7809083437167272			
SIM defocus (mm)	0	0.001439871863259334			
SIM translation stage pos (mm)	-233.592463	-233.5874344608287			
SIM translation stage offset (mm)	0	-0.005018542100998502			
Observation start time	238684491.184000	238683473.76899			
Observation start date	2005-07-25T13:13:47	2005-07-25T12:57:53			
Observation end time	238689491.184000	238689898.98178			
Observation end date	2005-07-25T14:37:07	2005-07-25T14:44:58			
Read mode	TIMED	TIMED			

## 2.3 Aspect





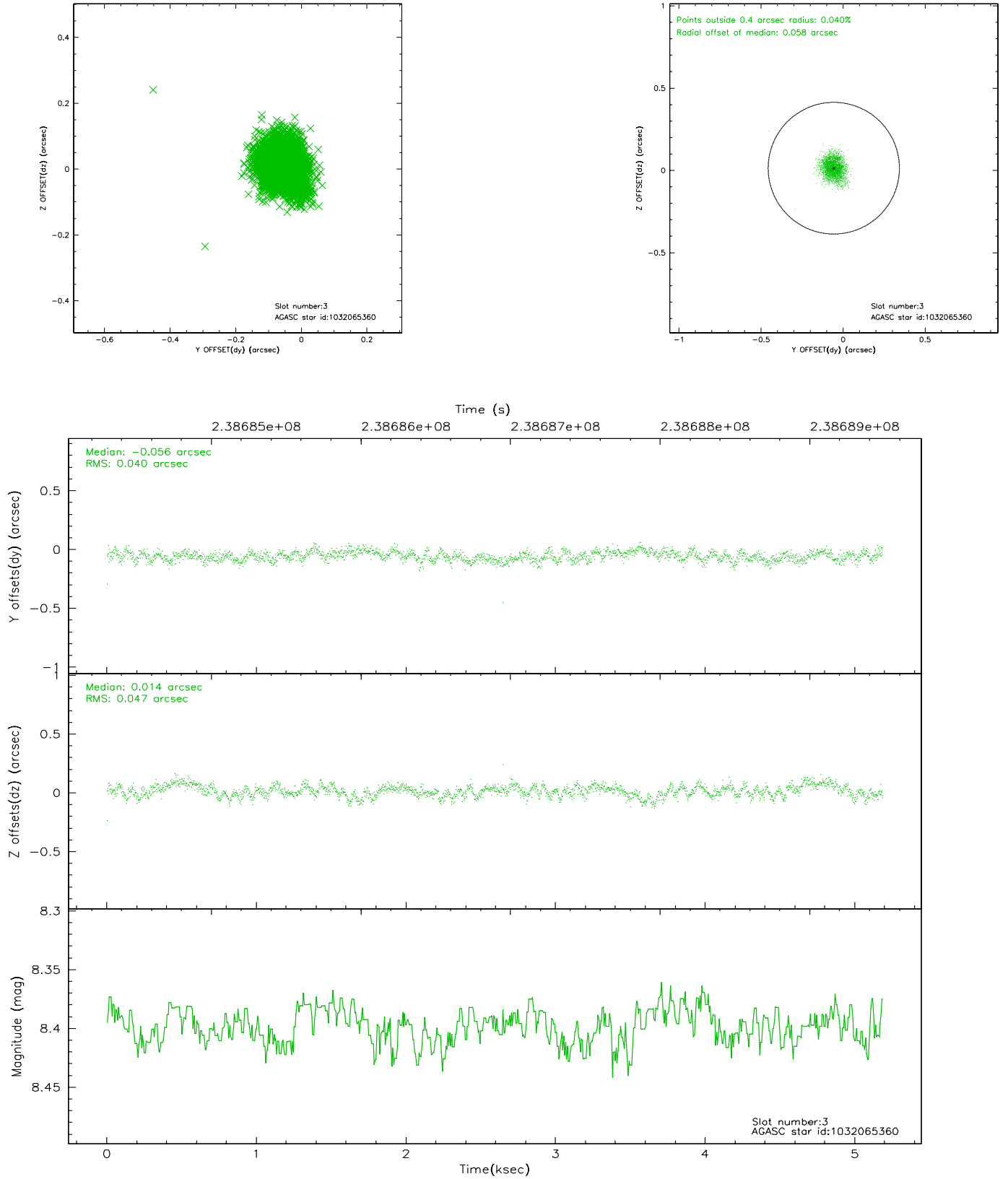
### Slot Statistics

slot	status	id	mag	n_pts	med_dy	med_dz	dr1	dr2	ra	dec	mean_y	mean_z
0	FID	ACIS-I-1	7.24	1265	0.019	-0.004	0.007	0.011	0.000000	0.000000	932.79	-834.42
1	FID	ACIS-I-5	7.23	1265	-0.151	0.039	0.006	0.011	0.000000	0.000000	-1814.81	1062.58
2	FID	ACIS-I-6	7.25	1265	0.041	0.036	0.007	0.011	0.000000	0.000000	397.13	1708.37
3	GUIDE	1032065360	8.40	2530	-0.056	0.014	0.066	0.106	259.684100	-41.099417	275.01	-537.00
4	GUIDE	1033770424	8.24	2529	-0.135	-0.016	0.056	0.093	260.243465	-40.286835	-2134.01	1717.84
5	GUIDE	1034291960	8.83	2526	0.004	0.109	0.068	0.108	260.615806	-41.317914	1713.18	1680.93
6	GUIDE	1032069200	8.73	2530	-0.057	-0.066	0.077	0.121	258.953756	-41.099138	-242.15	-2448.91
7	GUIDE	1033775792	7.30	2529	0.247	-0.042	0.046	0.079	260.192320	-40.388299	-1820.21	1483.02

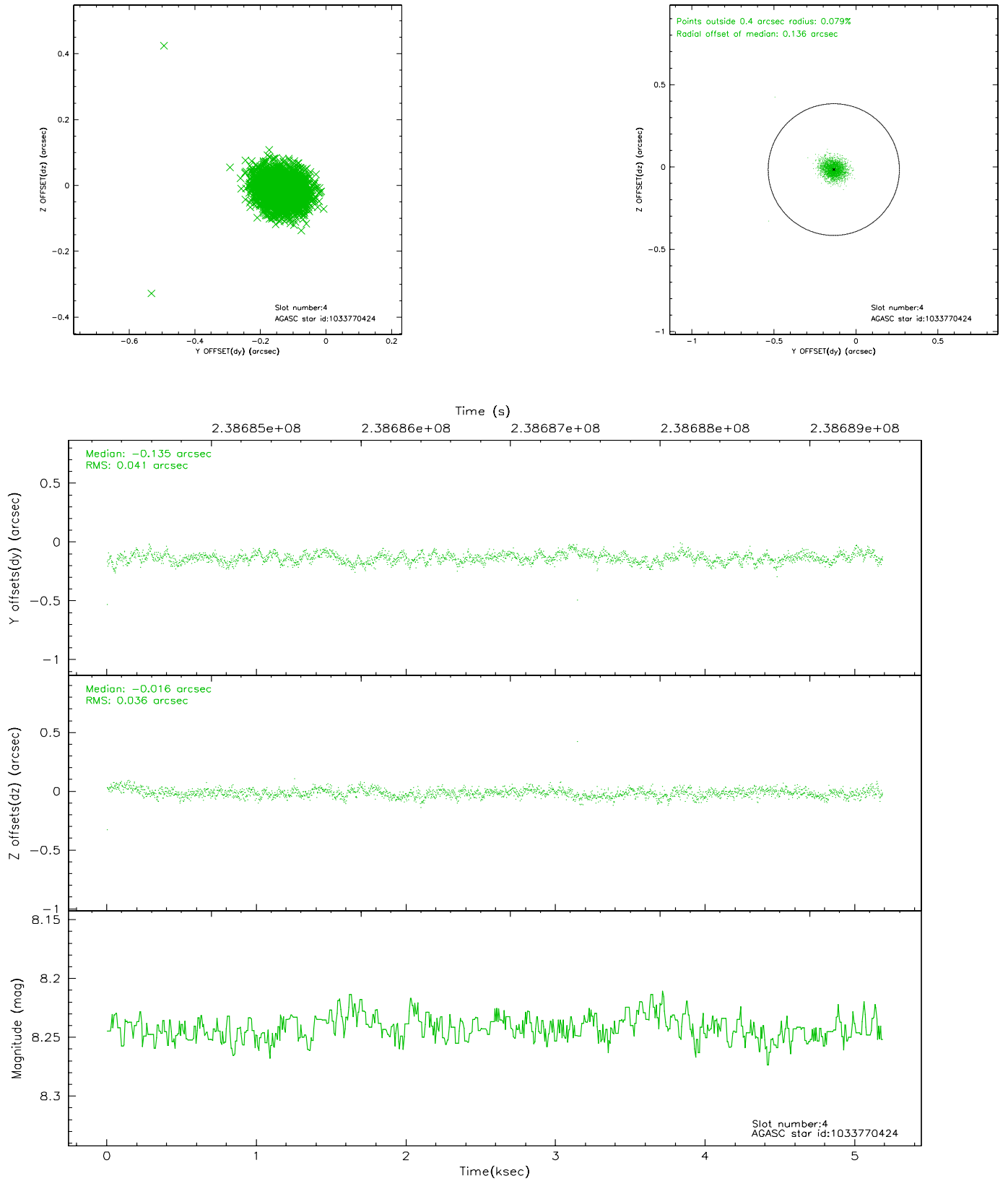


## 2.4 Star Slots

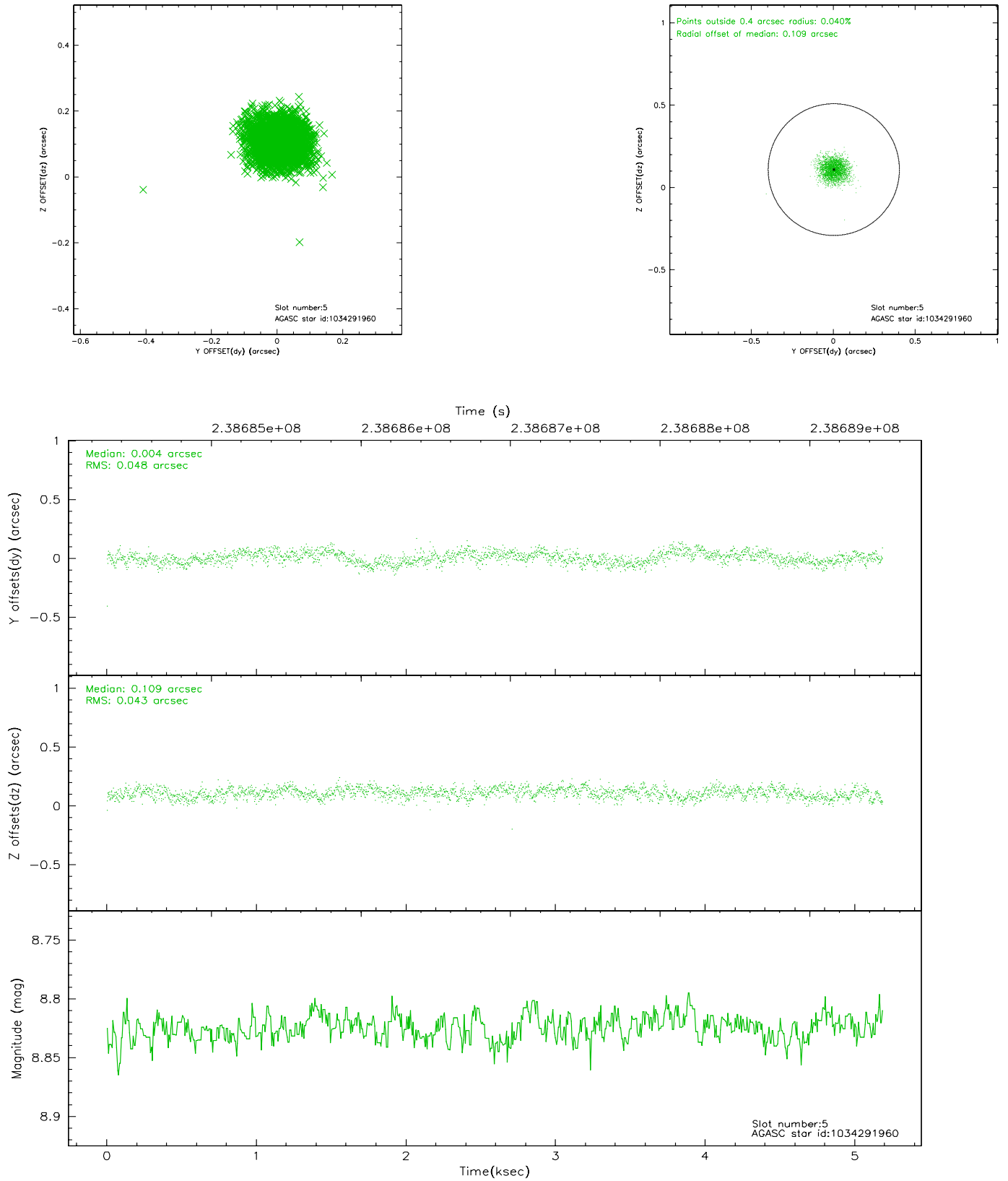
### 2.4.1 Slot 3



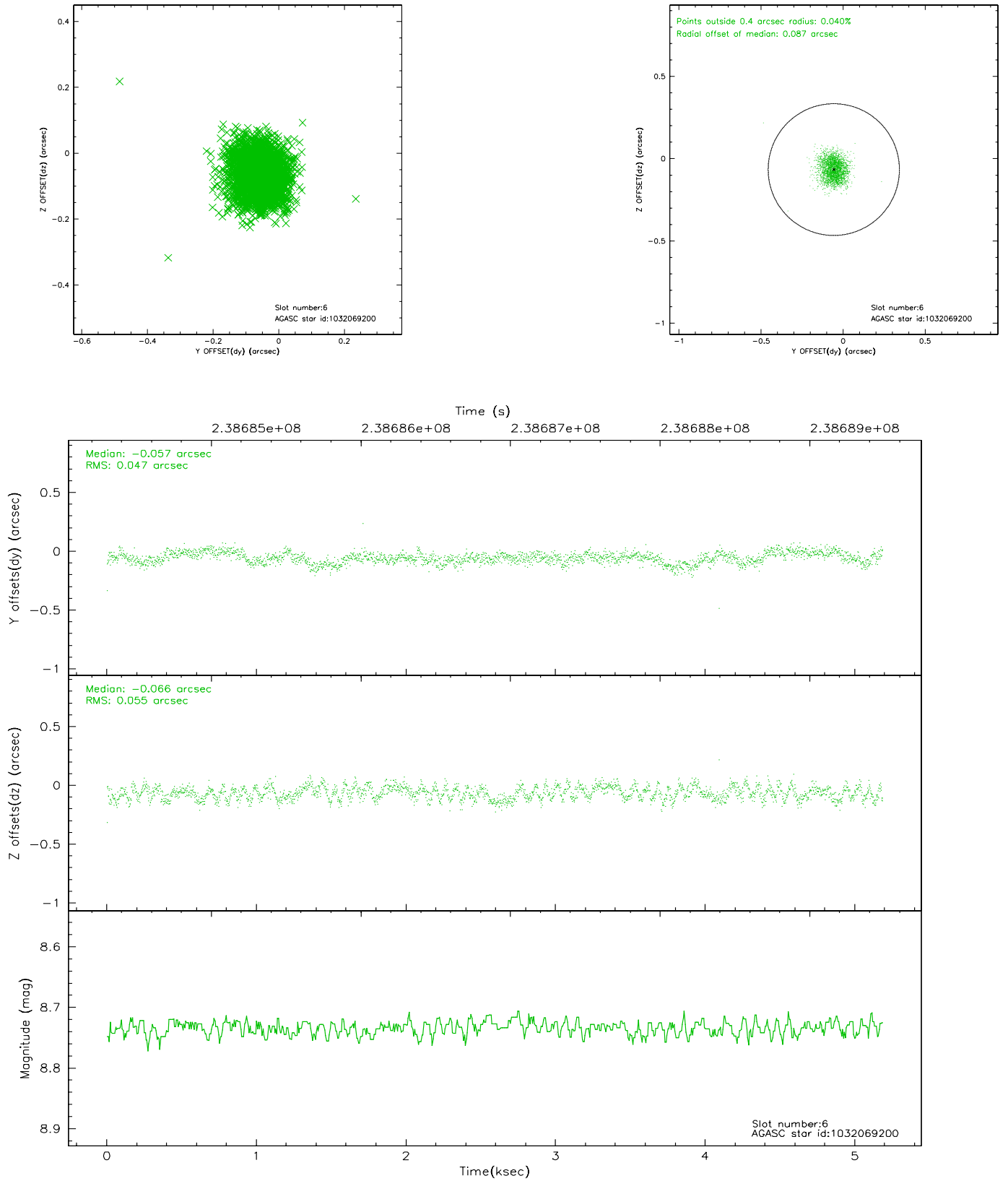
## 2.4.2 Slot 4



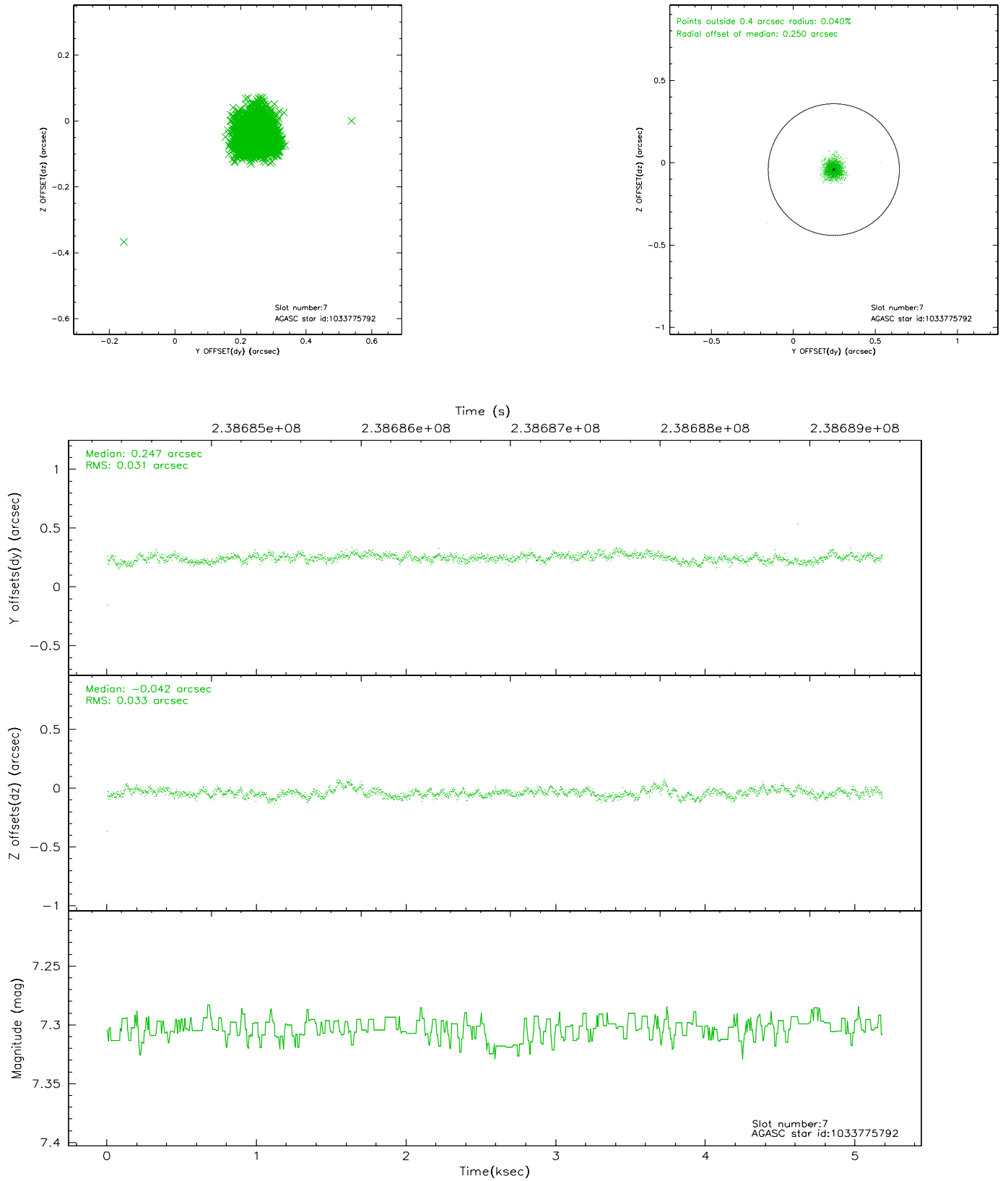
### 2.4.3 Slot 5



## 2.4.4 Slot 6

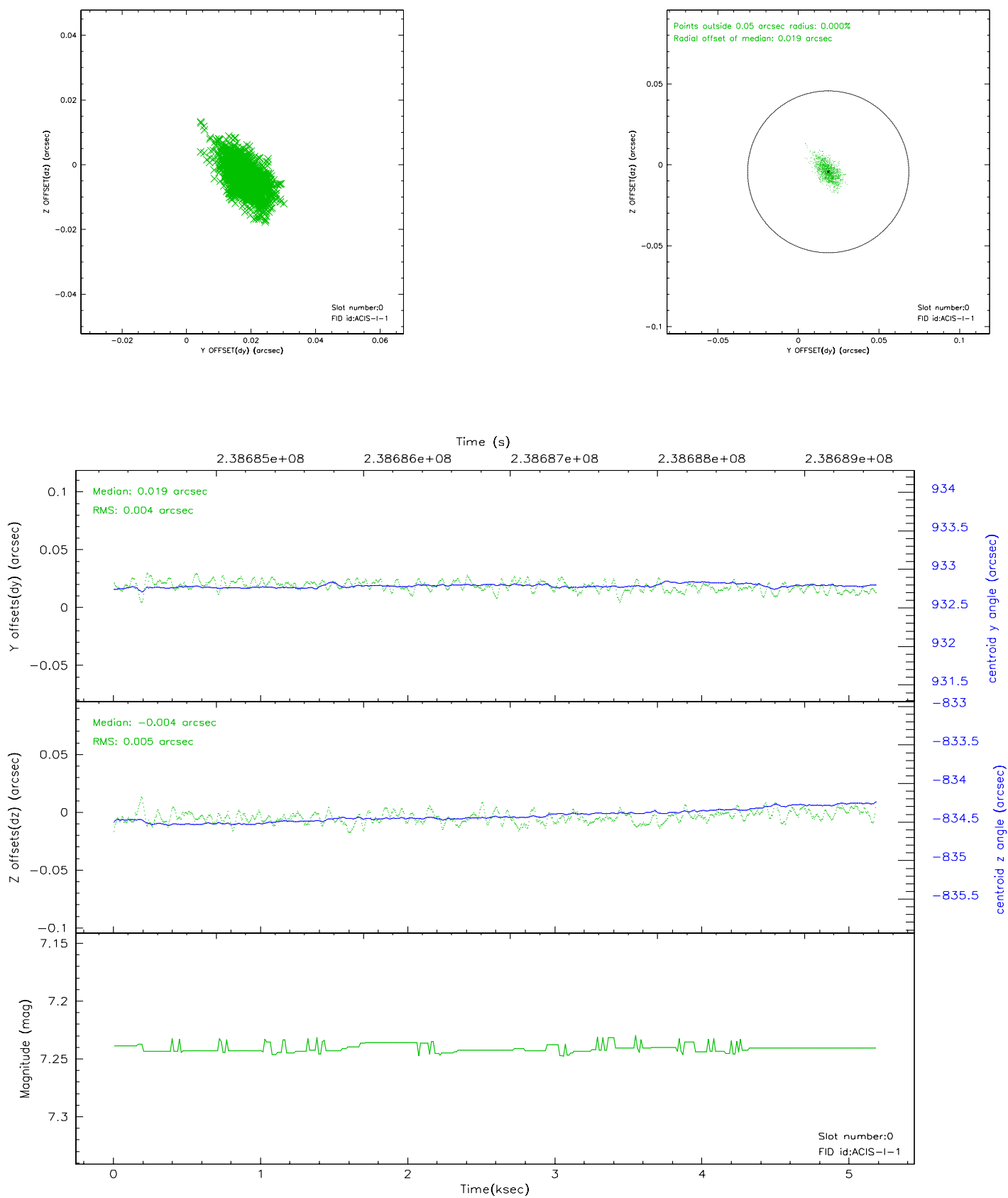


## 2.4.5 Slot 7

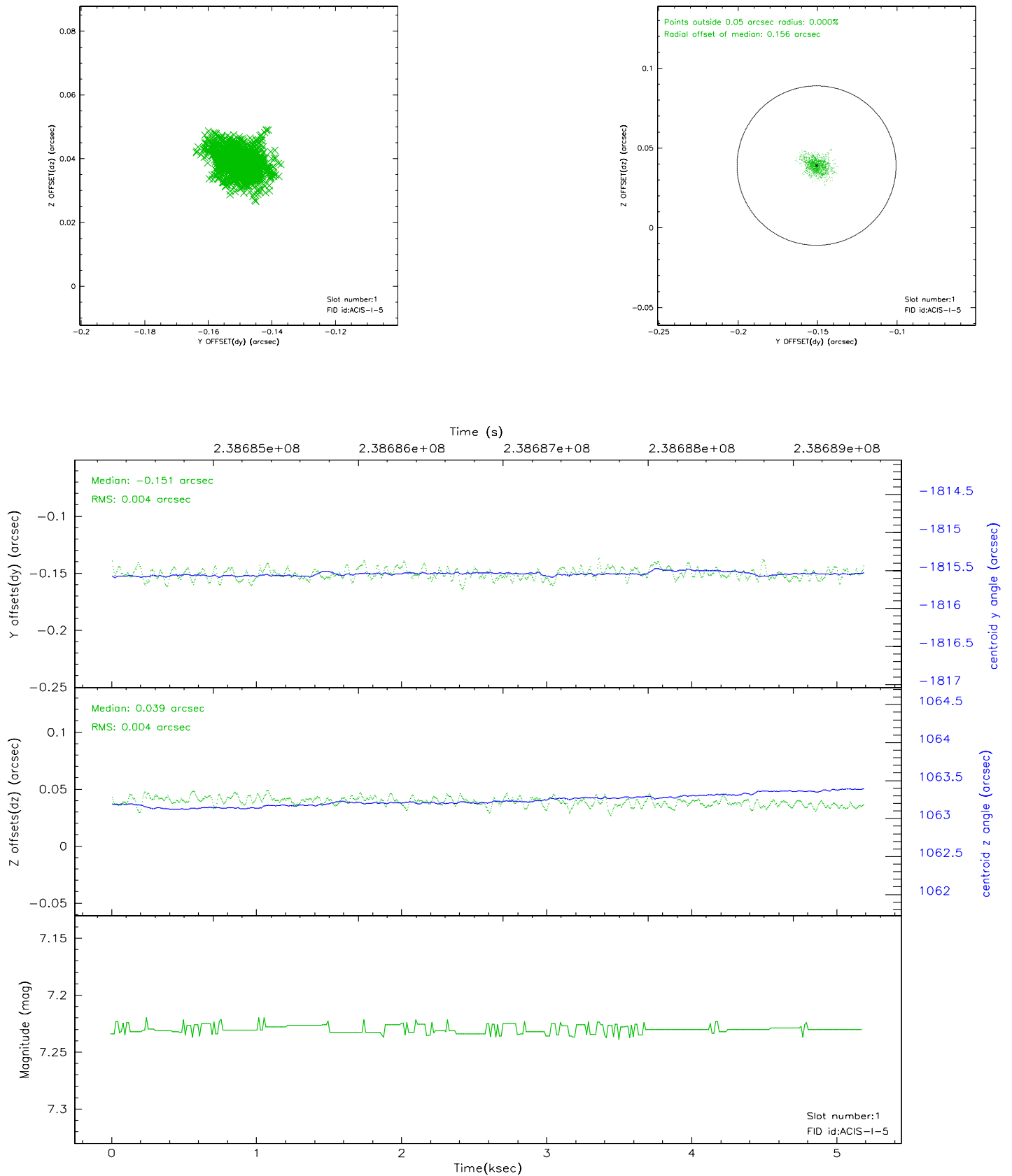


## 2.5 FID Slots

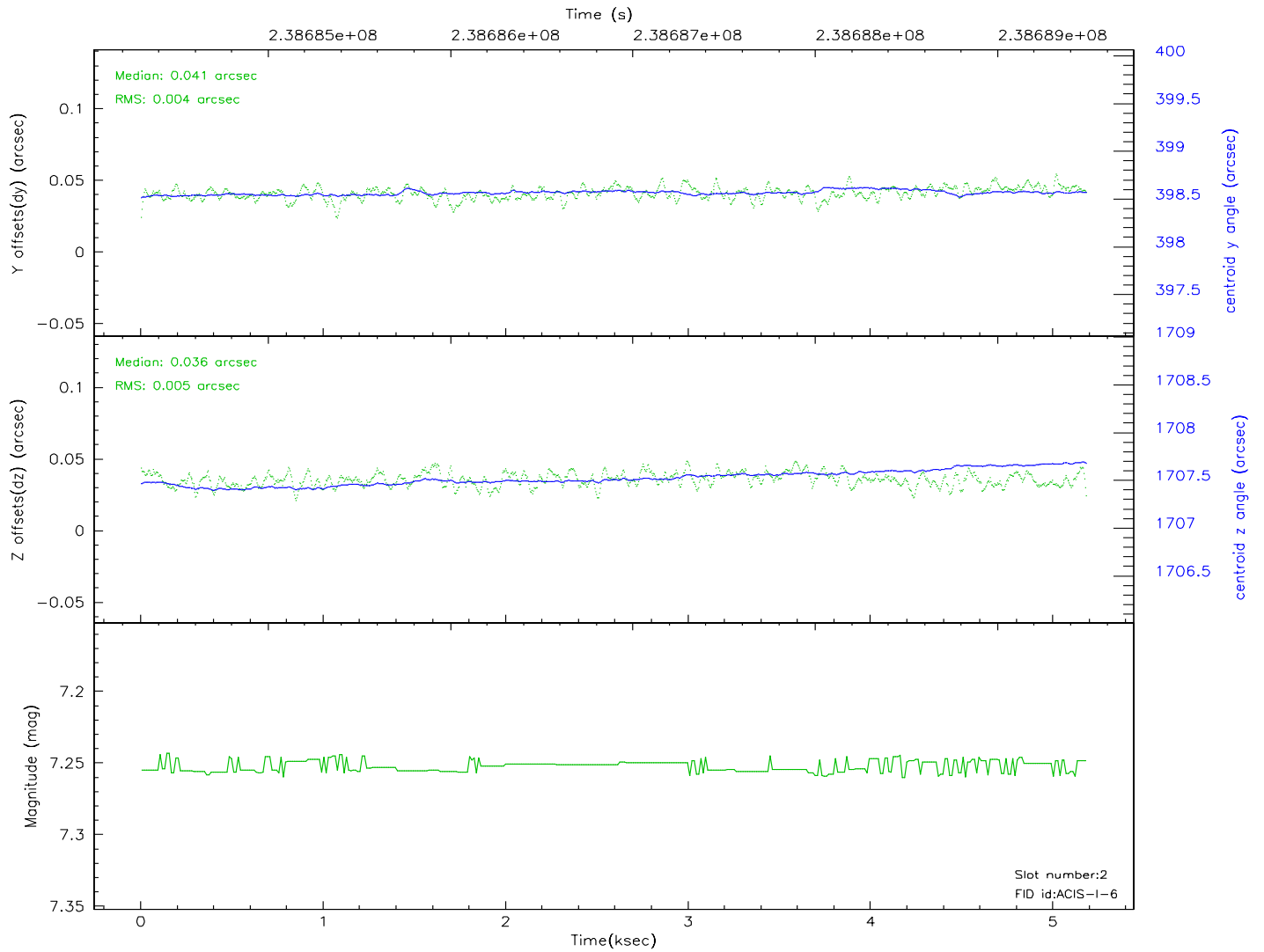
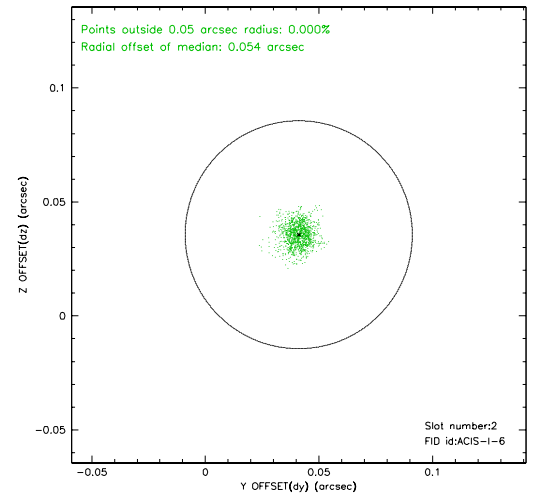
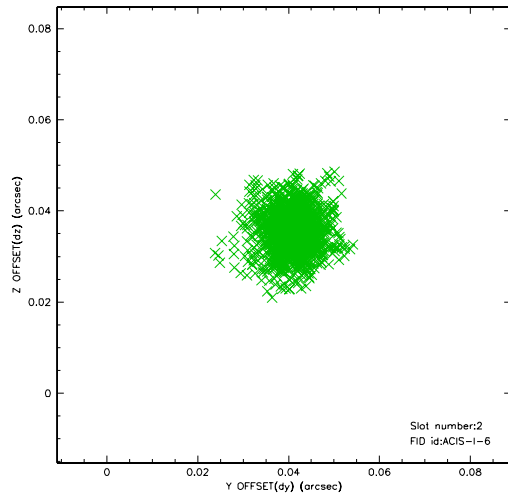
### 2.5.1 Slot 0



## 2.5.2 Slot 1

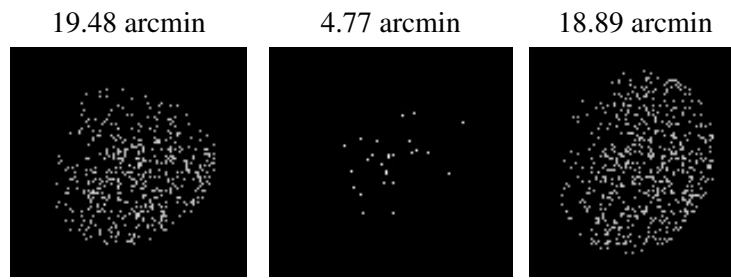


## 2.5.3 Slot 2





### 3 Point Sources



## A Summary

### A.1 Status

V&V Scientist	Beth Sundheim
V&V Date (YYYY-MM-DD)	2006.03.15
V&V Edition	1
V&V Disposition and Status	OK
V&V Charge Time	4.764275

### A.2 Comments