

V&V Reference Report

L2 ASCDS Version : 7.6.7.1

Observation 5469 - L2 Version 002
Chandra X-Ray Center

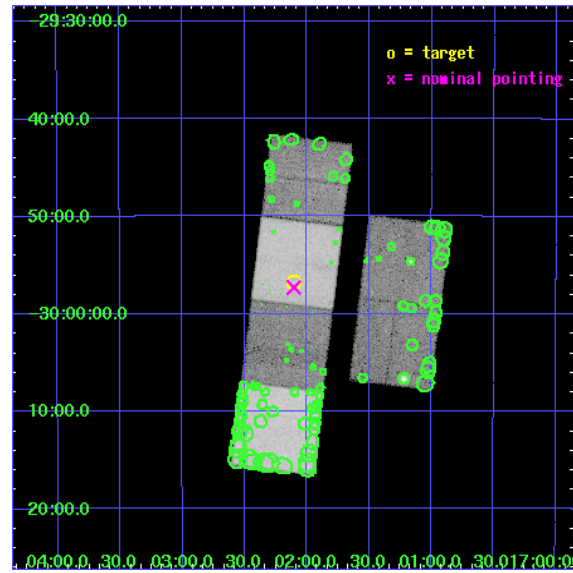
L2 Processing Date : Mar 14 2006

Contents

1	Front	2
2	OBI	3
2.1	OBI	3
2.1.1	Images	3
2.1.2	Bias	3
2.1.3	Parameters	4
2.1.4	Events	4
2.2	Compared Parameters	5
2.3	Aspect	6
2.4	Star Slots	9
2.4.1	Slot 3	9
2.4.2	Slot 4	10
2.4.3	Slot 5	11
2.4.4	Slot 6	12
2.4.5	Slot 7	13
2.5	FID Slots	14
2.5.1	Slot 0	14
2.5.2	Slot 1	15
2.5.3	Slot 2	16
3	Point Sources	17
A	Summary	18
A.1	Status	18
A.2	Comments	18

1 Front

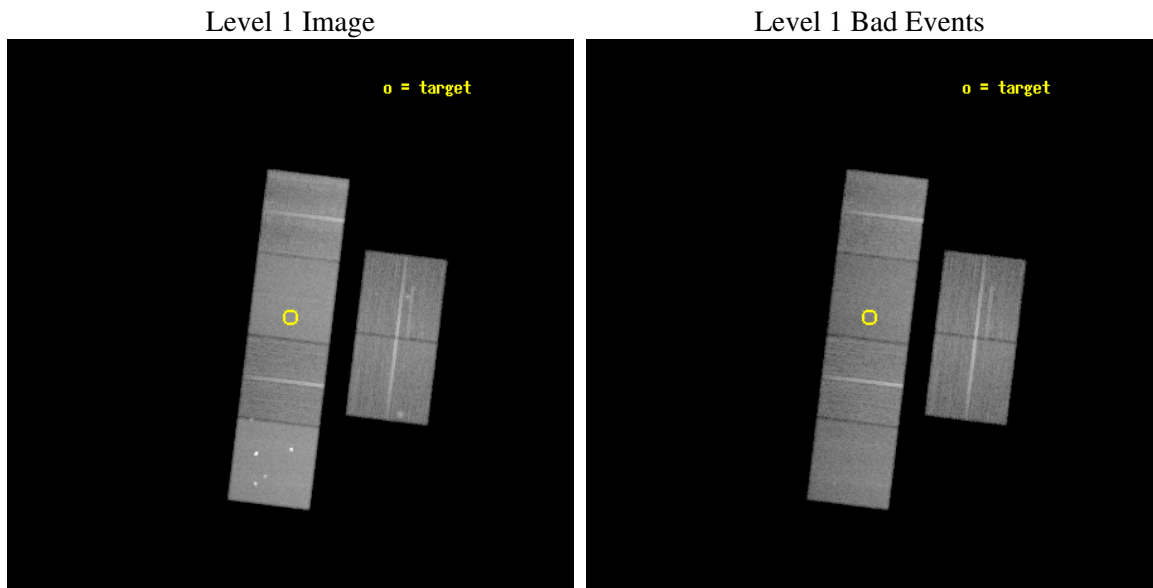
seq_num	400399
obs_id	5469
title	Cooling curves of accretion-heated neutron stars
observer	Dr. Rudy Wijnands
object	MXB 1659-29
dtcycle	0
cycle	P
ra_targ	255.526667
dec_targ	-29.945639
ra_nom	255.52607629641
dec_nom	-29.955223777194
roll_nom	276.97460506078
revision	2
ontime	28956.799892128
livetime	28590.131456202
ontime2	28956.799892128
ontime3	28956.799892128
ontime5	28956.799892128
ontime6	28956.799892128
ontime7	28956.799892128
ontime8	28953.558891892
l2events	381392



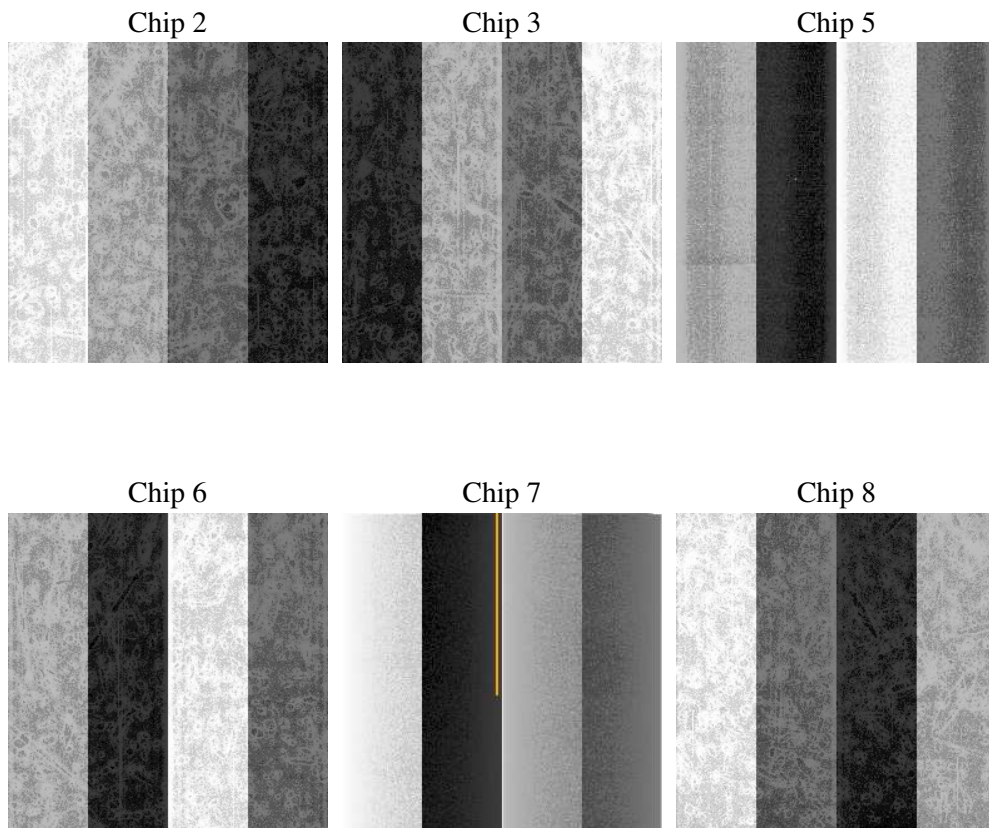
2 OBI

2.1 OBI

2.1.1 Images



2.1.2 Bias



2.1.3 Parameters

obi_num	0
ascdsver	7.6.7.1
caldsver	3.2.1
date	2006-03-14T11:08:12
revision	2

sched_exp_time	29000.000000
ontime	28961.669854879
ontime2	28961.669854879
ontime3	28961.669854879
ontime5	28961.669854879
ontime6	28961.669854879
ontime7	28961.669854879
ontime8	28958.428854644
l1events	1680877

2.1.4 Events

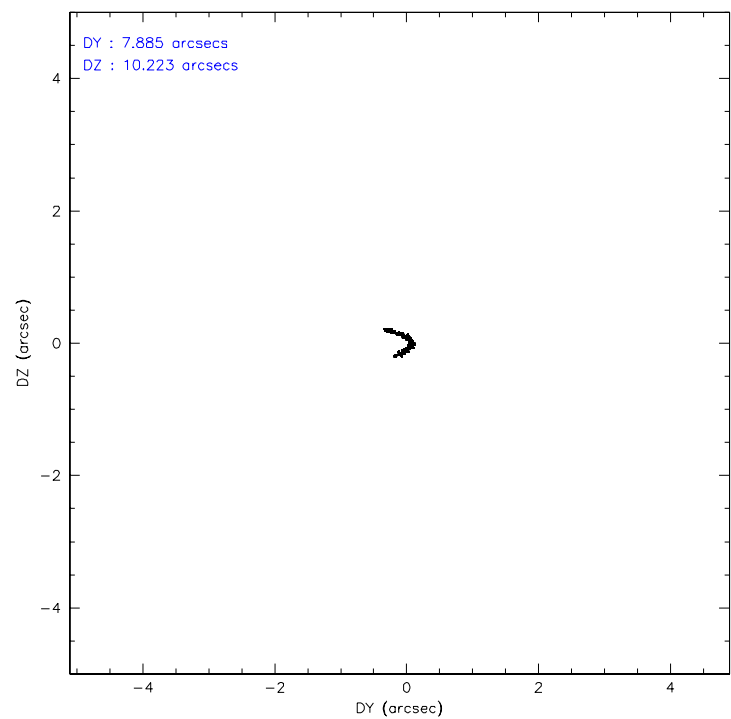
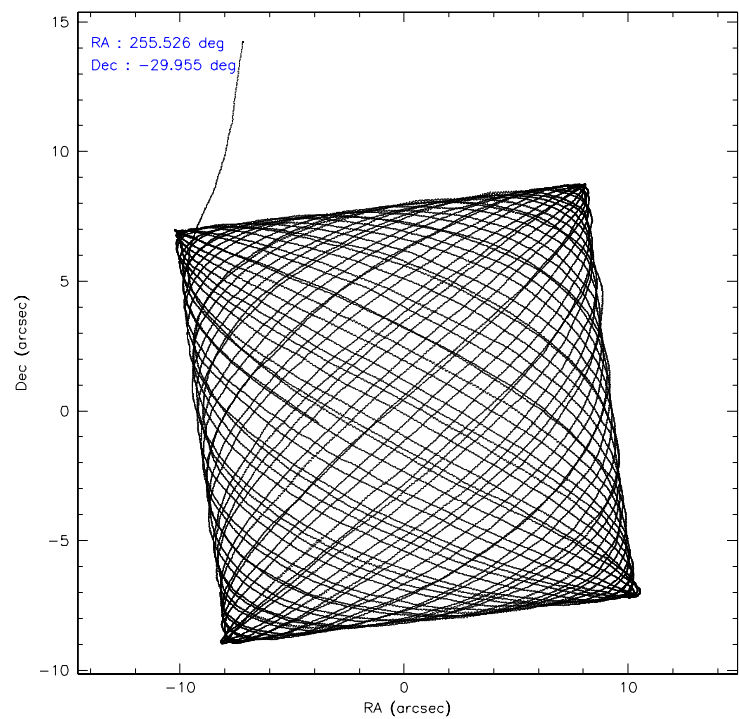
	ccd 2	ccd 3	ccd 5	ccd 6	ccd 7	ccd 8
level 1 events	237915	227722	361164	238046	318629	297401
rejected events	206689	197432	193676	207417	194280	229325
rejected %	86%	86%	53%	87%	60%	77%

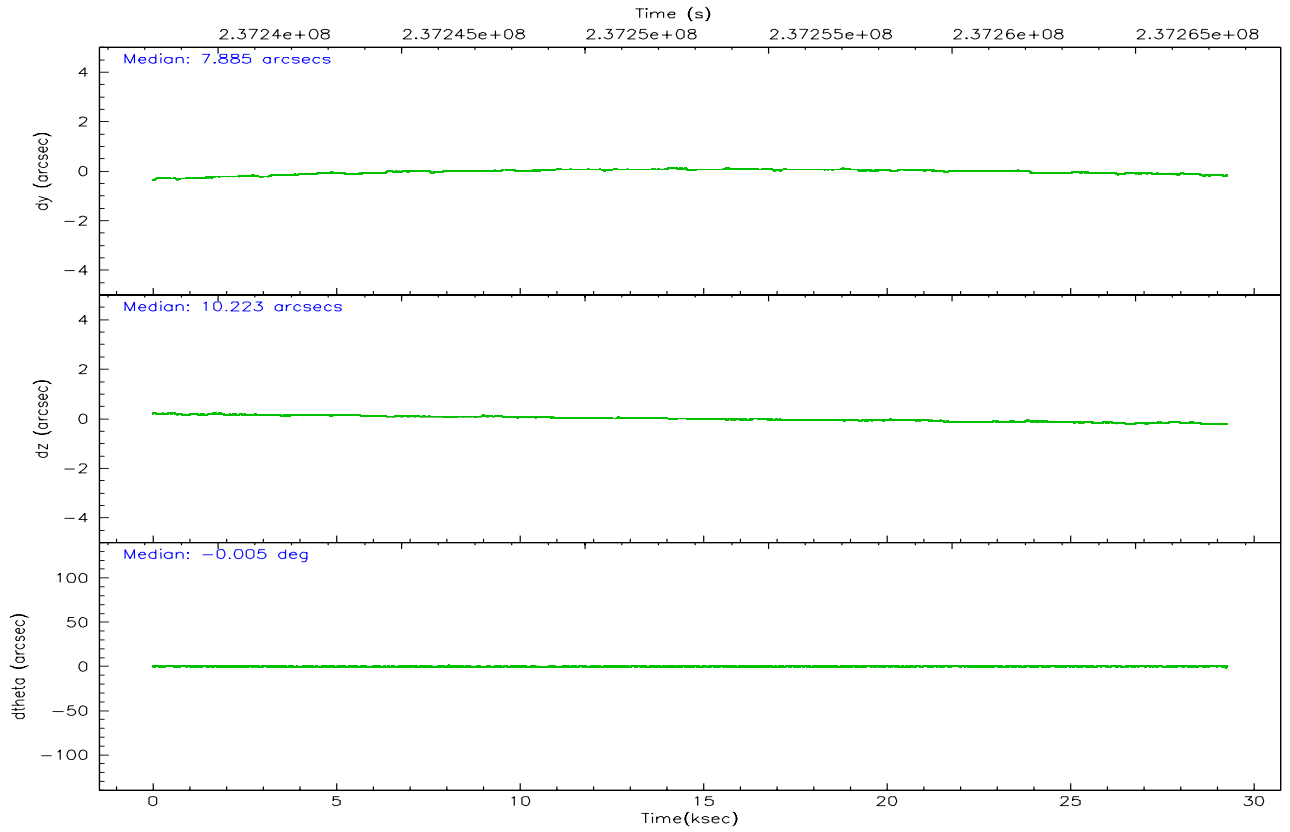
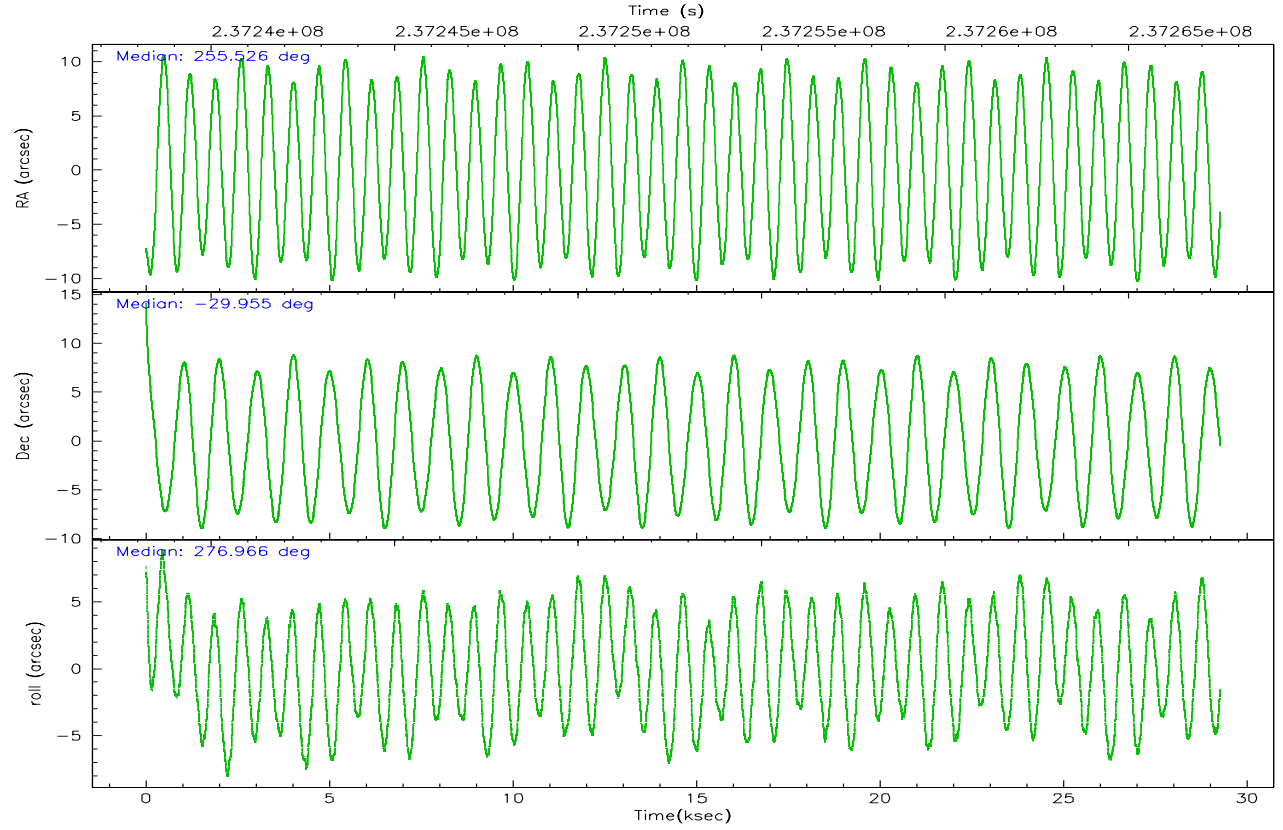
	ccd 2	ccd 3	ccd 5	ccd 6	ccd 7	ccd 8
grade 0 events	15094	14332	24008	13001	7989	23405
	6%	6%	6%	5%	2%	7%
grade 1 events	136	159	365	116	179	216
	0%	0%	0%	0%	0%	0%
grade 2 events	6187	5851	48690	6413	31672	14522
	2%	2%	13%	2%	9%	4%
grade 3 events	2613	2633	3573	2756	6274	7164
	1%	1%	0%	1%	1%	2%
grade 4 events	2599	2635	3500	2688	6113	6658
	1%	1%	0%	1%	1%	2%
grade 5 events	9178	10354	16777	10616	20324	14185
	3%	4%	4%	4%	6%	4%
grade 6 events	4746	4845	87749	5779	72328	16331
	1%	2%	24%	2%	22%	5%
grade 7 events	197362	186913	176502	196677	173750	214920
	82%	82%	48%	82%	54%	72%

2.2 Compared Parameters

Parameter	Planned	Actual	Parameter	Planned	Actual
Instrument	ACIS	ACIS	Obspar format version number	6	6
Detector	ACIS-235678	ACIS-235678	Obspar file type	PREDICTED	ACTUAL
Grating	NONE	NONE	Obspar update status	NONE	UPDATED
Data mode	FAINT	FAINT	On-chip summing requested	N	N
Observation mode	POINTING	POINTING	Subarray requested	NONE	NONE
Pointing RA	255.506851	255.5260762964125	Alternating exposures requested	N	N
Pointing Dec	-29.933729	-29.95522377719435	Primary exposure time	0.000000	3.2
Pointing Roll	276.808381	276.9746050607781			
SIM focus pos (mm)	-0.684267	-0.6828225247311905			
SIM defocus (mm)	0	0.001444936568705701			
SIM translation stage pos (mm)	-190.132523	-190.1400660498719			
SIM translation stage offset (mm)	0	0.00754346686406393			
Observation start time	237238497.184000	237237493.9028			
Observation start date	2005-07-08T19:33:53	2005-07-08T19:18:13			
Observation end time	237267497.184000	237268367.92921			
Observation end date	2005-07-09T03:37:13	2005-07-09T03:52:47			
Read mode	TIMED	TIMED			

2.3 Aspect



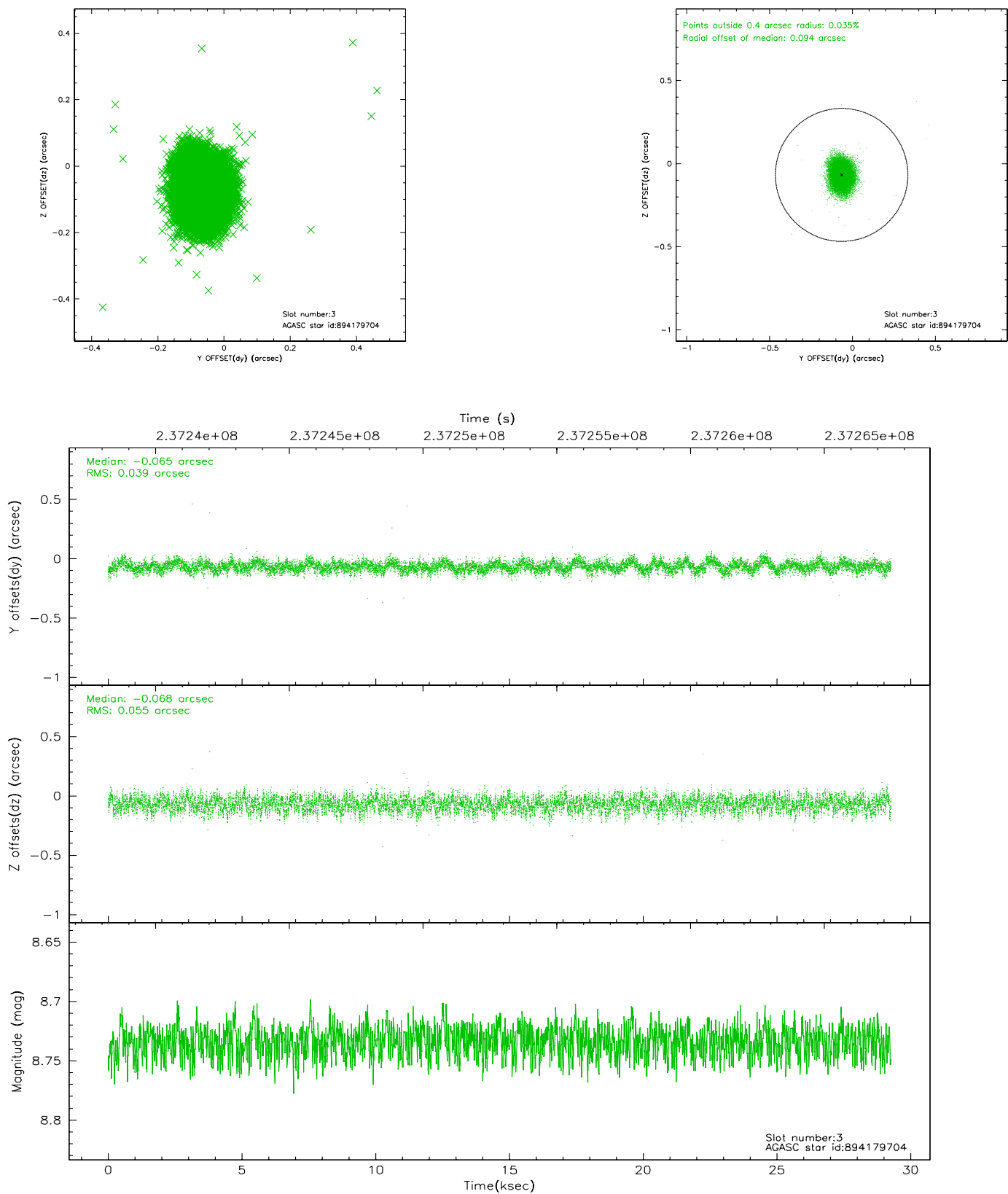


Slot Statistics

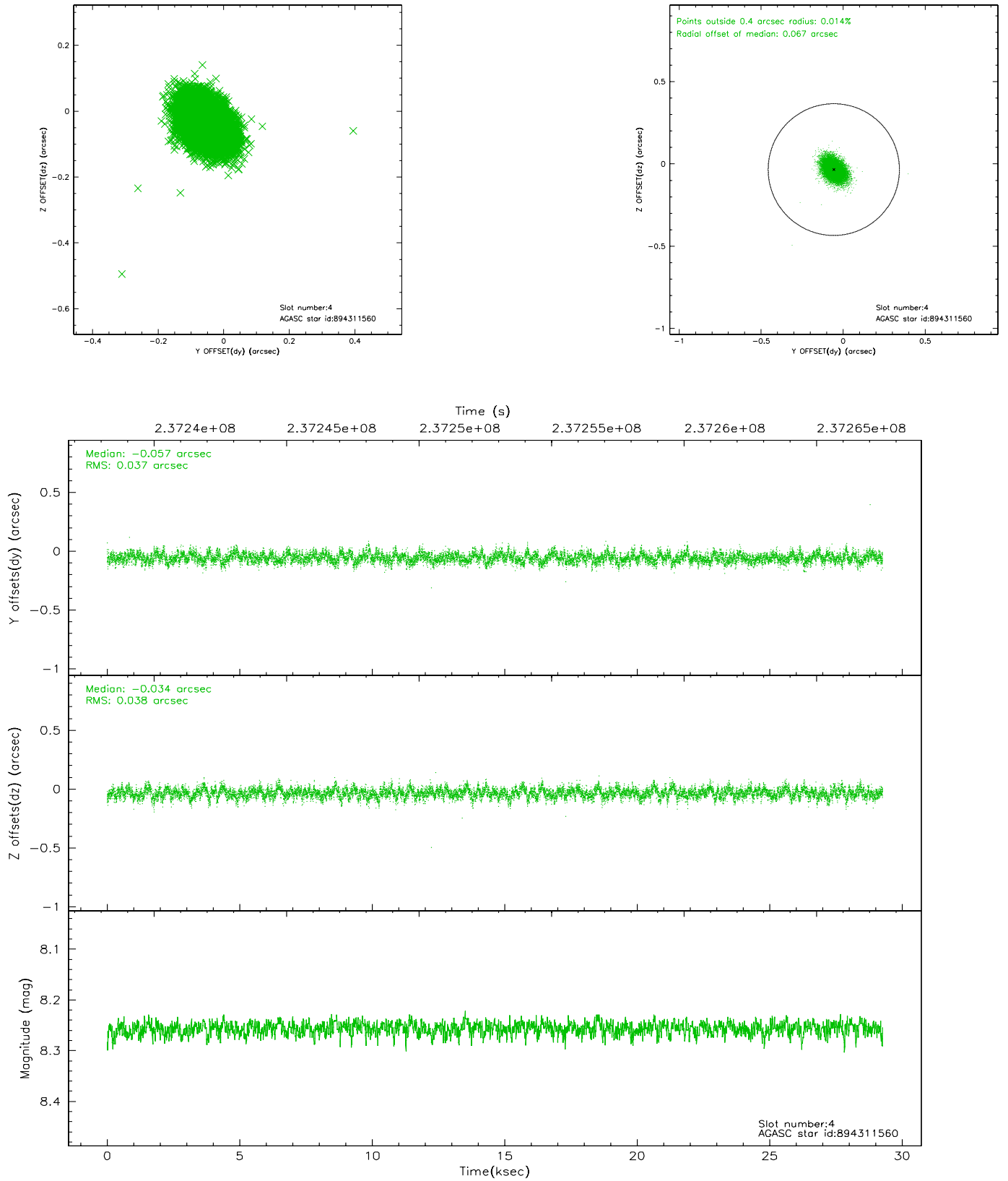
slot	status	id	mag	n_pts	med_dy	med_dz	dr1	dr2	ra	dec	mean_y	mean_z
0	FID	ACIS-S-2	7.11	7139	-0.032	0.003	0.008	0.013	0.000000	0.000000	-760.62	-1731.50
1	FID	ACIS-S-4	7.21	7139	0.069	0.015	0.008	0.017	0.000000	0.000000	2152.68	176.98
2	FID	ACIS-S-5	7.23	7139	-0.068	-0.009	0.009	0.017	0.000000	0.000000	-1813.44	170.63
3	GUIDE	894179704	8.73	14268	-0.065	-0.068	0.071	0.115	254.813840	-29.808957	-695.61	-2096.98
4	GUIDE	894311560	8.26	14276	-0.057	-0.034	0.056	0.094	255.968048	-29.561250	-1157.45	1592.48
5	GUIDE	894314544	8.58	14272	0.045	-0.032	0.070	0.115	255.921805	-29.699914	-679.60	1388.14
6	GUIDE	964690752	8.80	14277	0.031	0.058	0.076	0.122	255.992274	-30.082811	715.43	1437.93
7	GUIDE	964692016	9.29	14199	0.047	0.074	0.095	0.153	256.158728	-30.198595	1193.25	1900.69

2.4 Star Slots

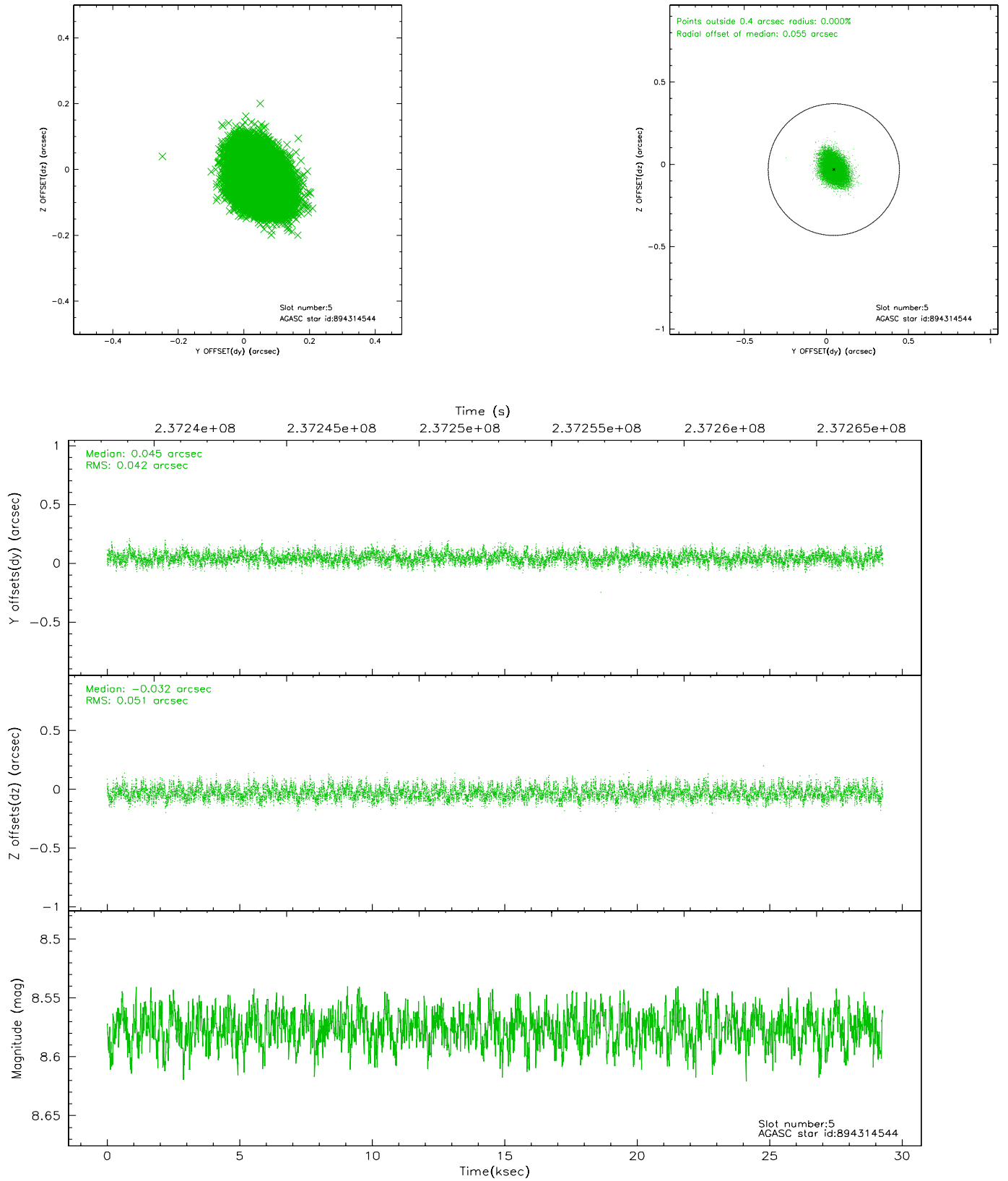
2.4.1 Slot 3



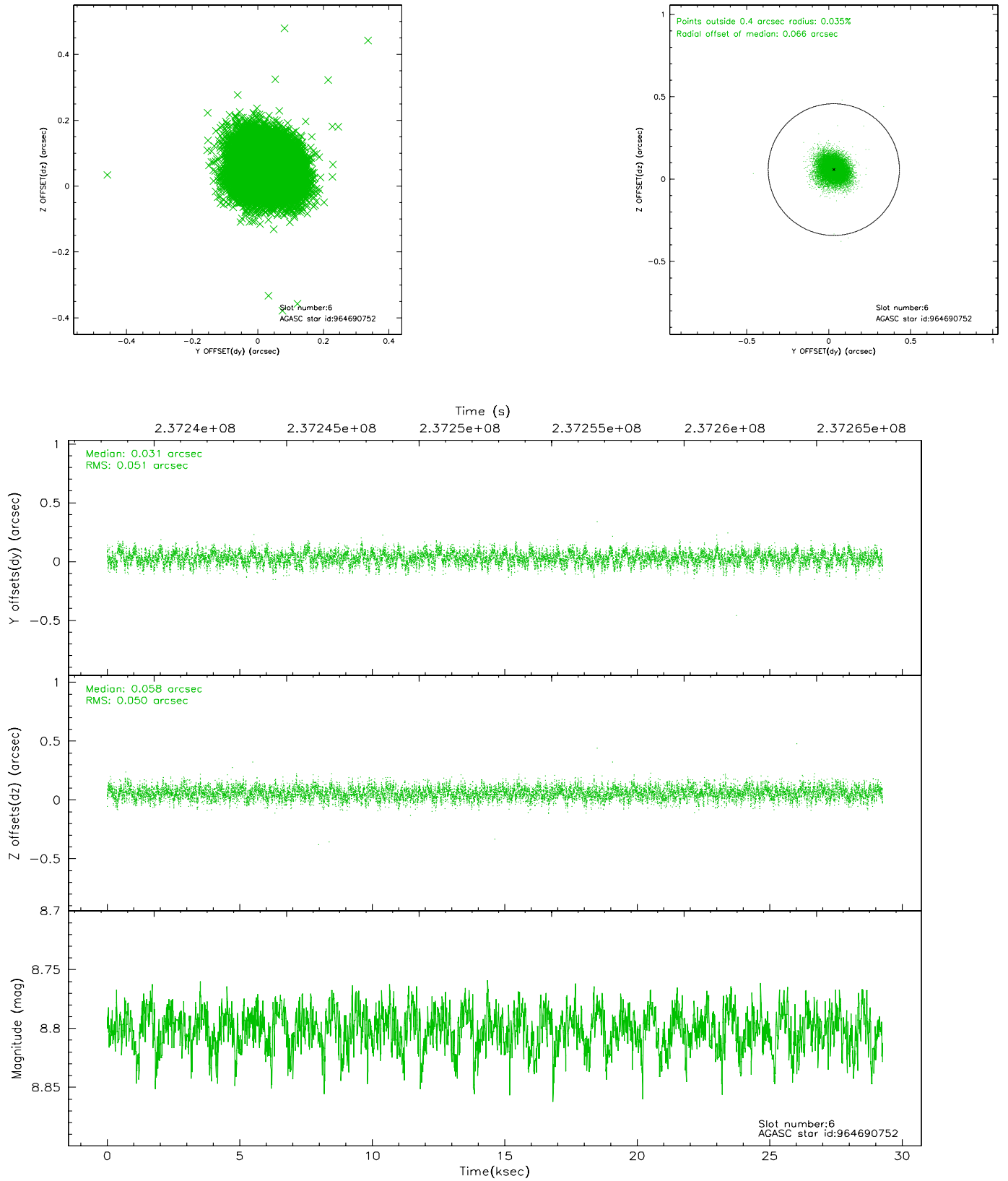
2.4.2 Slot 4



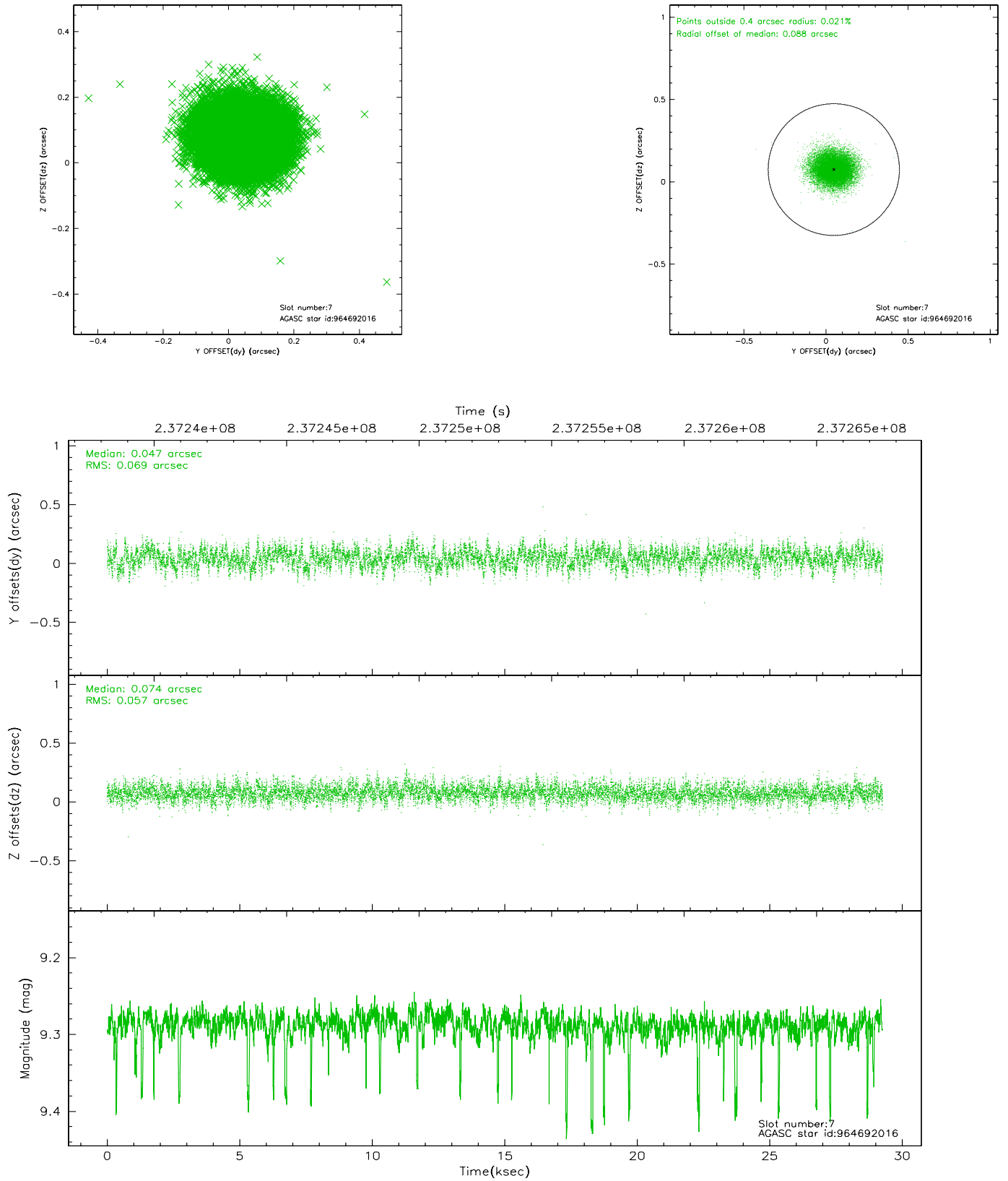
2.4.3 Slot 5



2.4.4 Slot 6

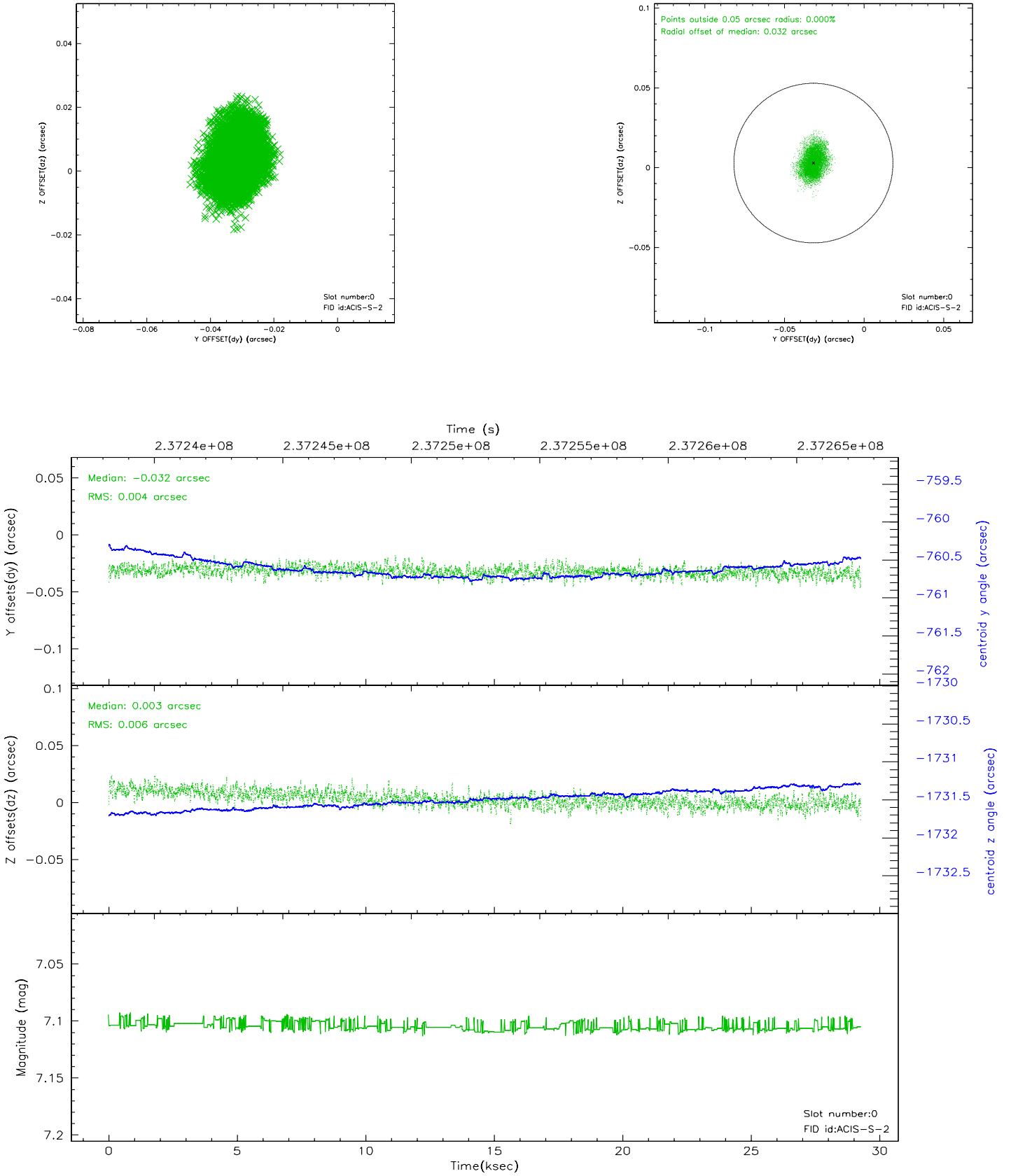


2.4.5 Slot 7

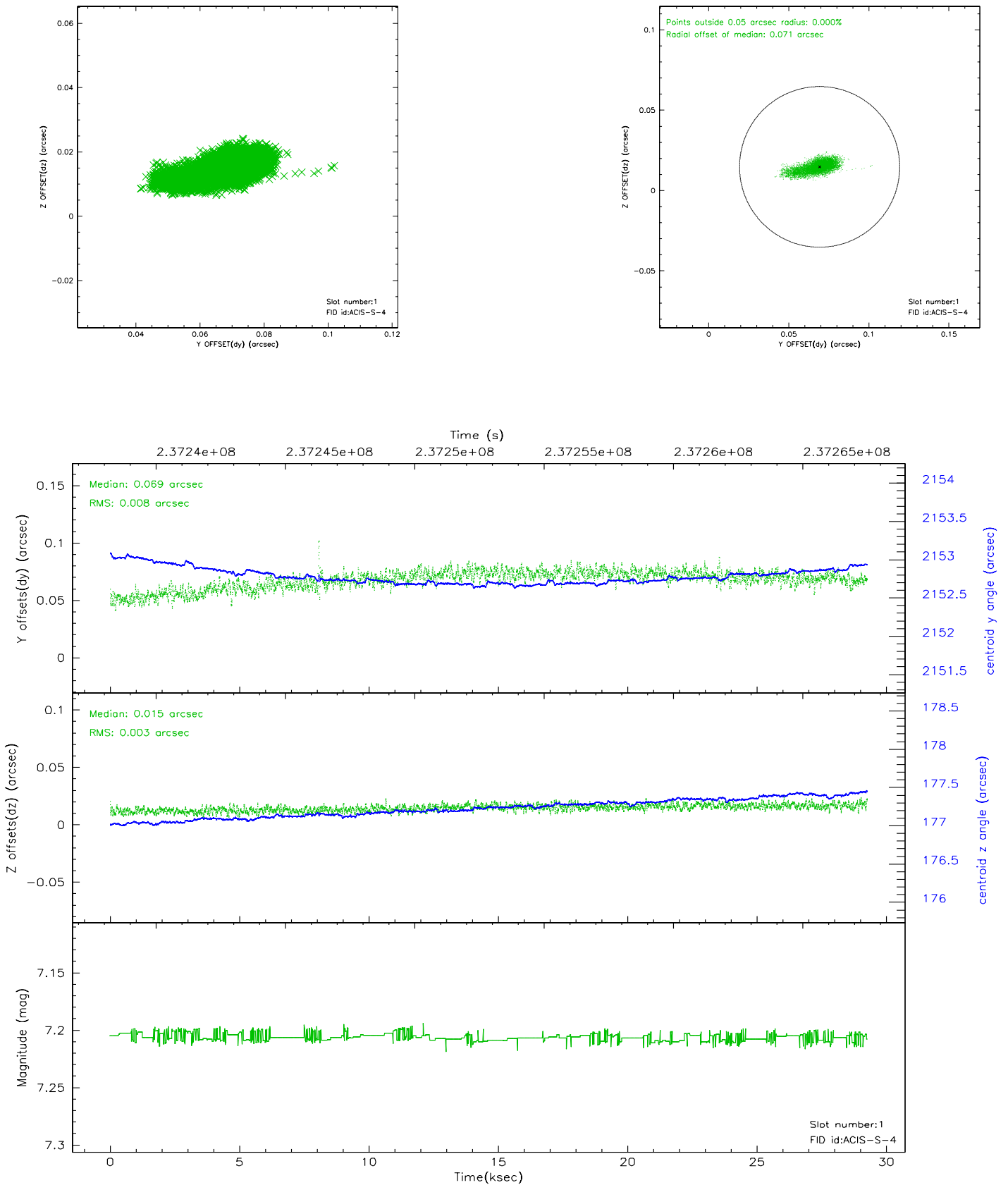


2.5 FID Slots

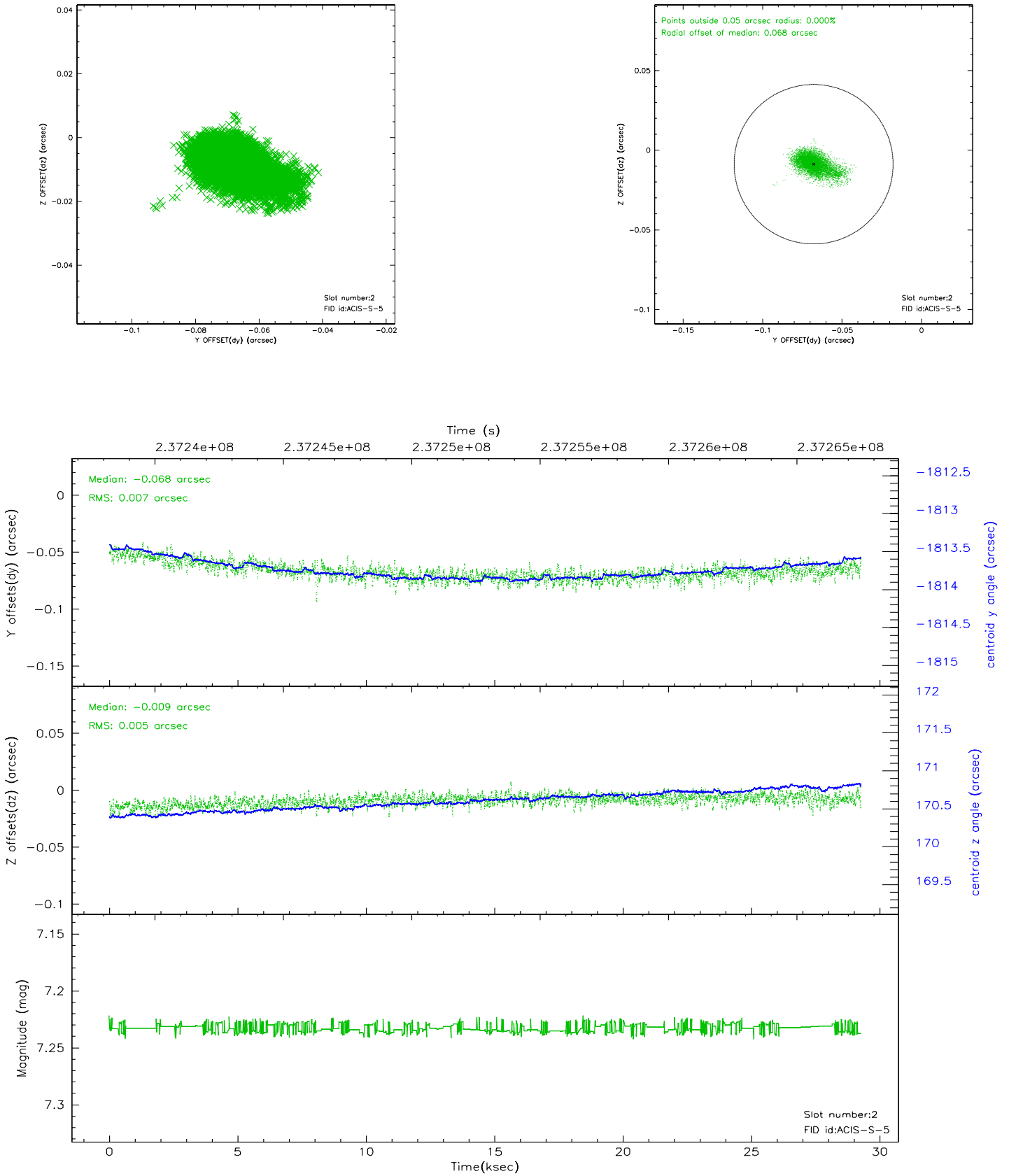
2.5.1 Slot 0



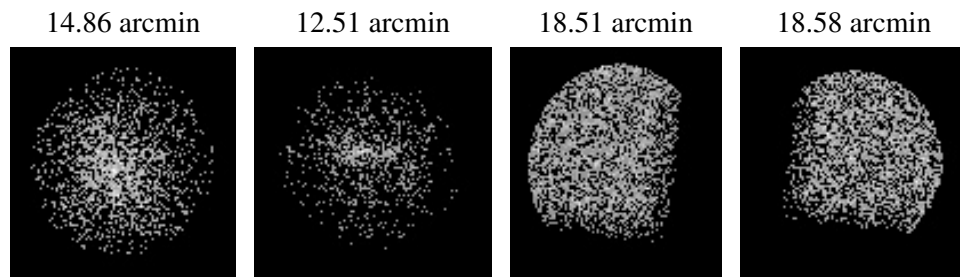
2.5.2 Slot 1



2.5.3 Slot 2



3 Point Sources



A Summary

A.1 Status

V&V Scientist	Beth Sundheim
V&V Date (YYYY-MM-DD)	2006.03.14
V&V Edition	1
V&V Disposition and Status	OK
V&V Charge Time	28.95679

A.2 Comments