

V&V Reference Report

L2 ASCDS Version : 8.5.1.1

Observation 5464 - L2 Version 3
Chandra X-Ray Center

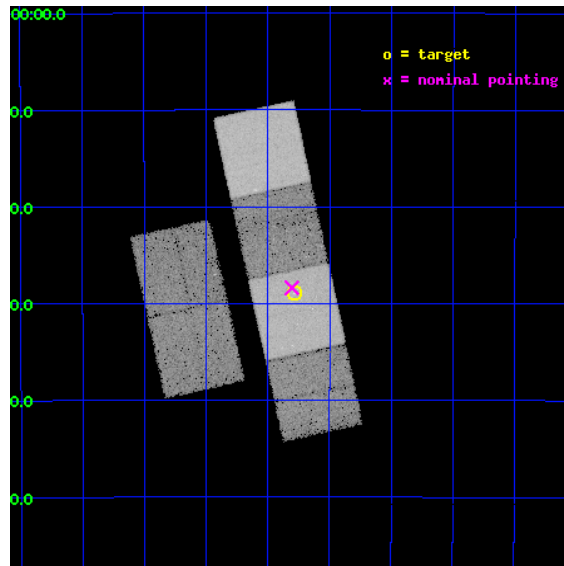
L2 Processing Date : Dec 23 2012

Contents

1	Front	2
2	OBI	3
2.1	OBI	3
2.1.1	Images	3
2.1.2	Bias	3
2.1.3	Parameters	4
2.1.4	Events	4
2.2	Compared Parameters	5
2.3	Aspect	6
2.4	Star Slots	9
2.4.1	Slot 3	9
2.4.2	Slot 4	10
2.4.3	Slot 5	11
2.4.4	Slot 6	12
2.4.5	Slot 7	13
2.5	FID Slots	14
2.5.1	Slot 0	14
2.5.2	Slot 1	15
2.5.3	Slot 2	16
A	Summary	17
A.1	Status	17
A.2	Comments	17

1 Front

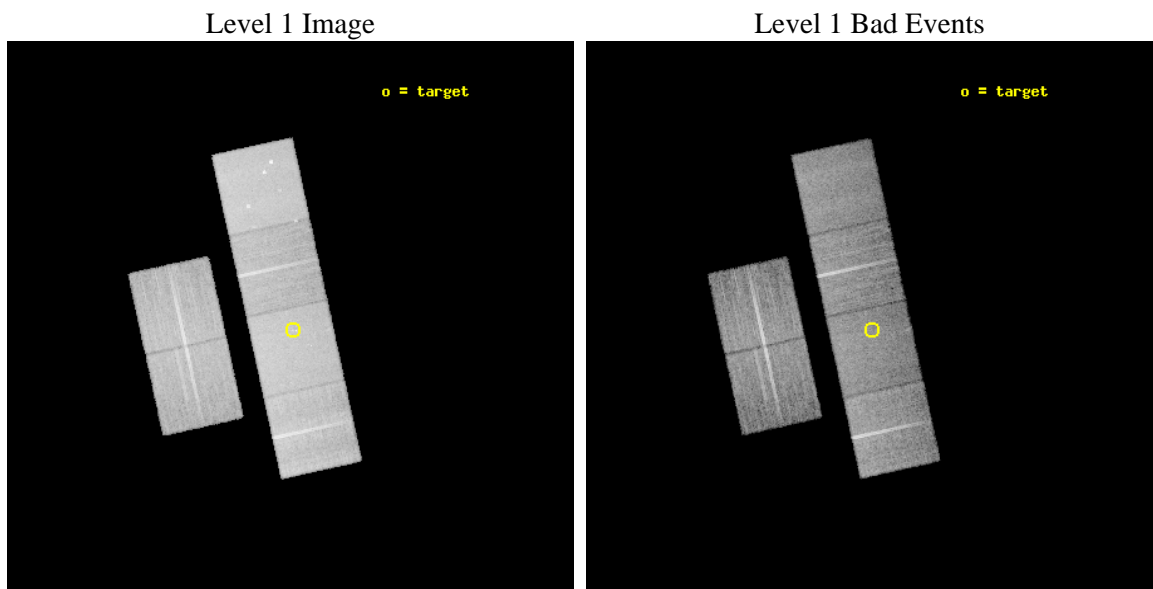
seq_num	400394	Sequence number
obs_id	5464	Observation id
title	Quiescent X-ray counterparts of Globular Cluster transients	Propos
observer	Dr. Rudy Wijnands	Principal investigator
object	Terzan 1	Source name
dtcycle	0	
cycle	P	events from which exps? Prim/Second/Both
ra_targ	263.947083	Observer's specified target RA [deg]
dec_targ	-30.481944	Observer's specified target Dec [deg]
ra_nom	263.95136420805	Nominal RA [deg]
dec_nom	-30.47299343964	Nominal Dec [deg]
roll_nom	77.675428904543	Nominal Roll [deg]
revision	3	Processing version of data
ontime	19097.599928856	Sum of GTIs [s]
livetime	18855.774619363	Livetime [s]
ontime2	19097.599928856	Sum of GTIs [s]
ontime3	19097.599928856	Sum of GTIs [s]
ontime5	19097.599928856	Sum of GTIs [s]
ontime6	19097.599928856	Sum of GTIs [s]
ontime7	19097.599928856	Sum of GTIs [s]
ontime8	19097.599928856	Sum of GTIs [s]
l2events	235048	Number of level 2 events



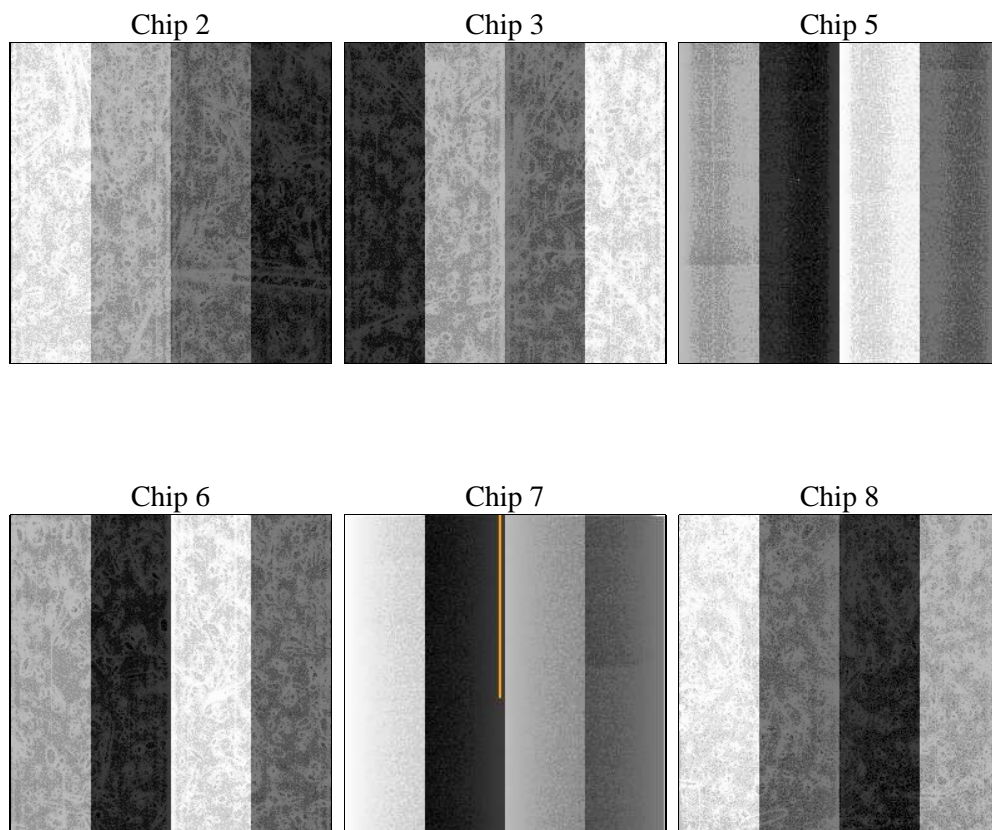
2 OBI

2.1 OBI

2.1.1 Images



2.1.2 Bias



2.1.3 Parameters

obi_num	0	Obi number	sched_exp_time	19000.000000	[s] Scheduled observation exposure time
ascdsver	8.5.1.1	Processing system revision	ontime	19097.599928856	Sum of GTIs [s]
caldsver	4.5.5	 	ontime2	19097.599928856	Sum of GTIs [s]
date	2012-12-23T04:37:17	Date and time of file creation	ontime3	19097.599928856	Sum of GTIs [s]
revision	3	Processing version of data	ontime5	19097.599928856	Sum of GTIs [s]
			ontime6	19097.599928856	Sum of GTIs [s]
			ontime7	19097.599928856	Sum of GTIs [s]
			ontime8	19097.599928856	Sum of GTIs [s]
			l1events	967172	Number of level 1 events

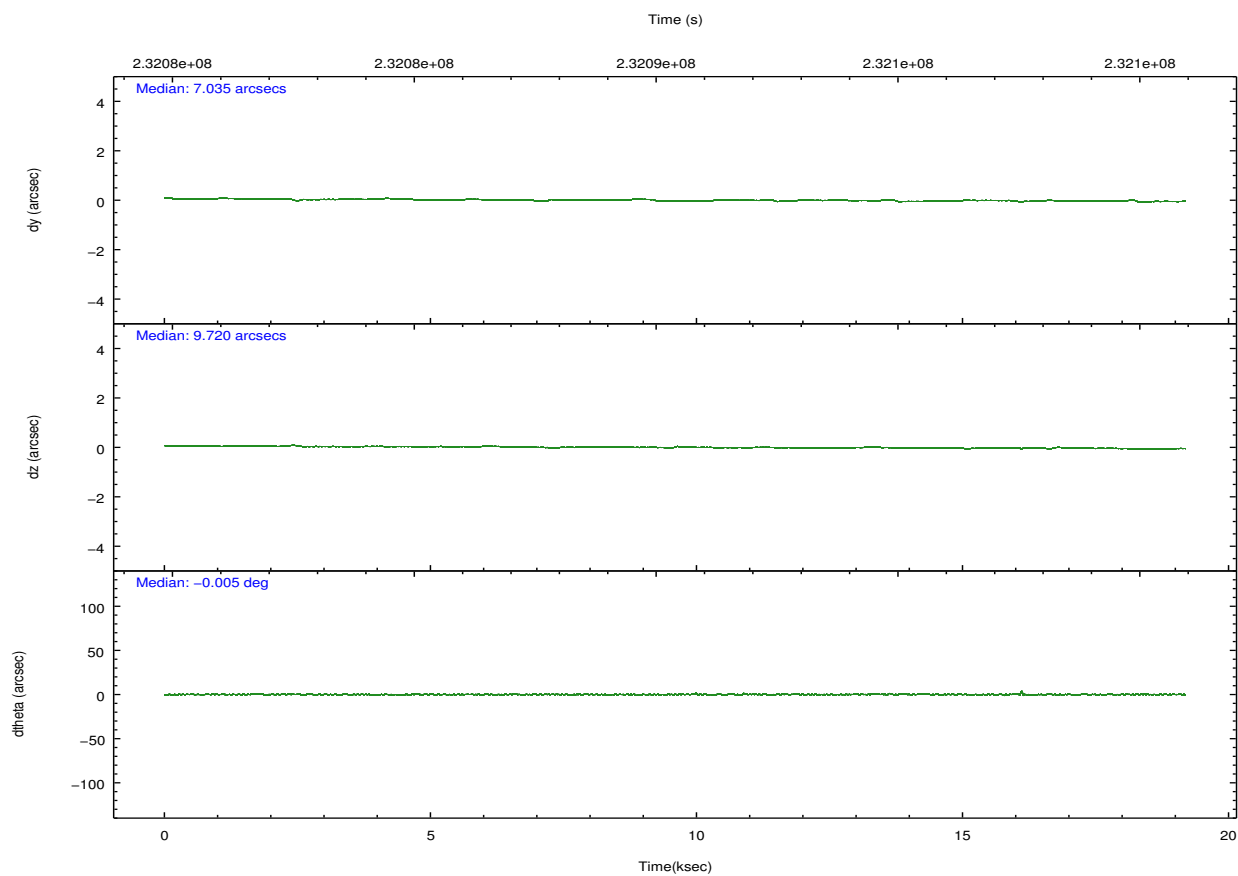
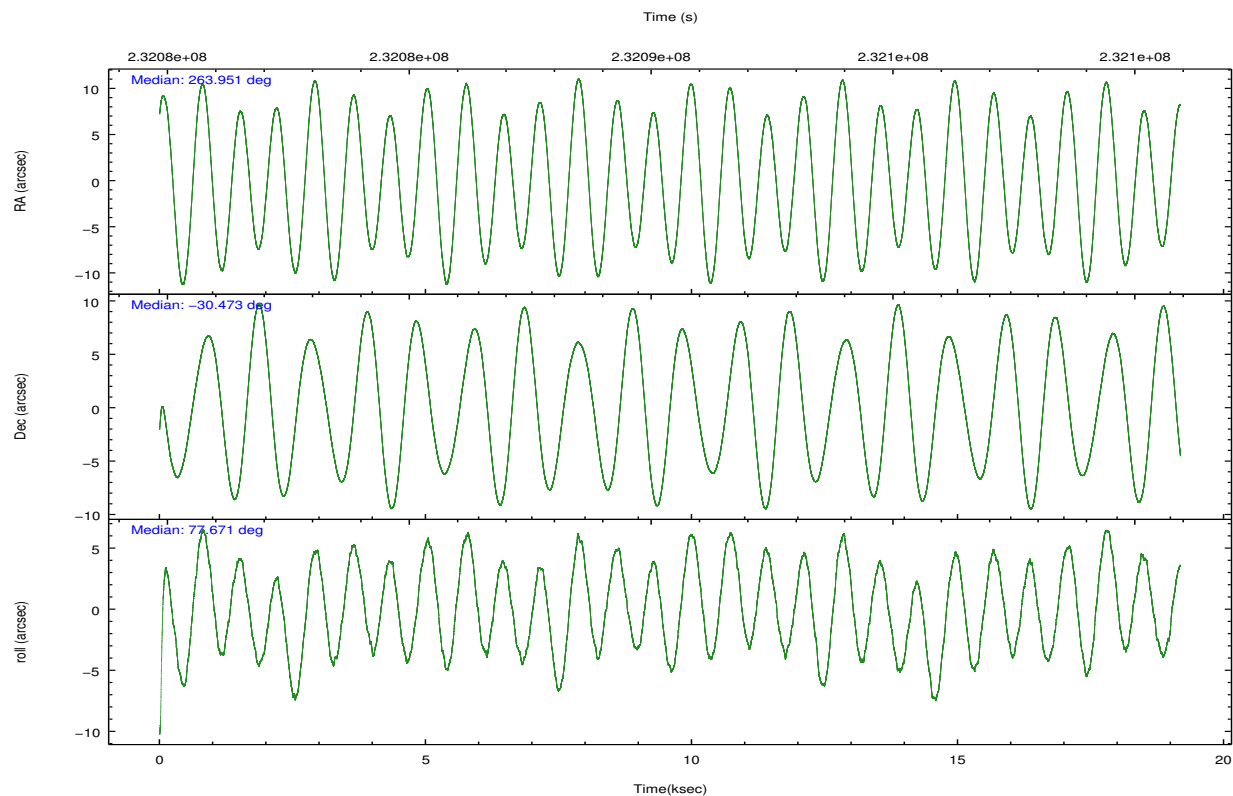
2.1.4 Events

	ccd 2	ccd 3	ccd 5	ccd 6	ccd 7	ccd 8		ccd 2	ccd 3	ccd 5	ccd 6	ccd 7	ccd 8
level 1 events	140986	128661	201310	136882	184567	174766	grade 0 events	8915	8642	9659	8879	7584	15513
rejected events	122121	109937	108189	116550	106143	130791		6%	6%	4%	6%	4%	8%
rejected %	86%	85%	53%	85%	57%	74%	grade 1 events	99	99	298	80	178	137
								0%	0%	0%	0%	0%	0%
							grade 2 events	4009	3869	27496	4386	15752	9174
								2%	3%	13%	3%	8%	5%
							grade 3 events	1467	1590	3898	1620	7013	4793
								1%	1%	1%	1%	3%	2%
							grade 4 events	1506	1514	3738	1731	6780	4381
								1%	1%	1%	1%	3%	2%
							grade 5 events	5239	5925	14397	6104	17307	8059
								3%	4%	7%	4%	9%	4%
							grade 6 events	2968	3111	48347	3720	41320	10116
								2%	2%	24%	2%	22%	5%
							grade 7 events	116783	103911	93477	110362	88633	122593
								82%	80%	46%	80%	48%	70%

2.2 Compared Parameters

Parameter	Planned	Actual	Parameter	Planned	Actual
Instrument	ACIS	ACIS	Obspar format version number	7	7
Detector	ACIS-235678	ACIS-235678	Obspar file type	PREDICTED	ACTUAL
Grating	NONE	NONE	Obspar update status	NONE	UPDATED
Data mode	FAINT	FAINT	Number of optional ACIS chips dropped	0	0
Observation mode	POINTING	POINTING	On-chip summing requested	N	N
[deg] Pointing RA	263.961363	263.9513642080537	Subarray requested	NONE	NONE
[deg] Pointing Dec	-30.498838	-30.47299343964013	Alternating exposures requested	N	N
[deg] Pointing Roll	77.523877	77.67542890454349	[s] Primary exposure time	0.000000	3.2
[mm] SIM focus pos	-0.684267	-0.6828225247311905			
[mm] SIM defocus	0	0.001444936568705701			
[mm] SIM translation stage pos	-190.132523	-190.1400660498719			
[mm] SIM translation stage offset	0	0.00754346686406393			
[s] Observation start time (MET)	232080991.184000	232079961.19245			
Observation start date	2005-05-10T02:55:27	2005-05-10T02:39:21			
[s] Observation end time (MET)	232099991.184000	232100280.79338			
Observation end date	2005-05-10T08:12:07	2005-05-10T08:18:00			
Read mode	TIMED	TIMED			

2.3 Aspect

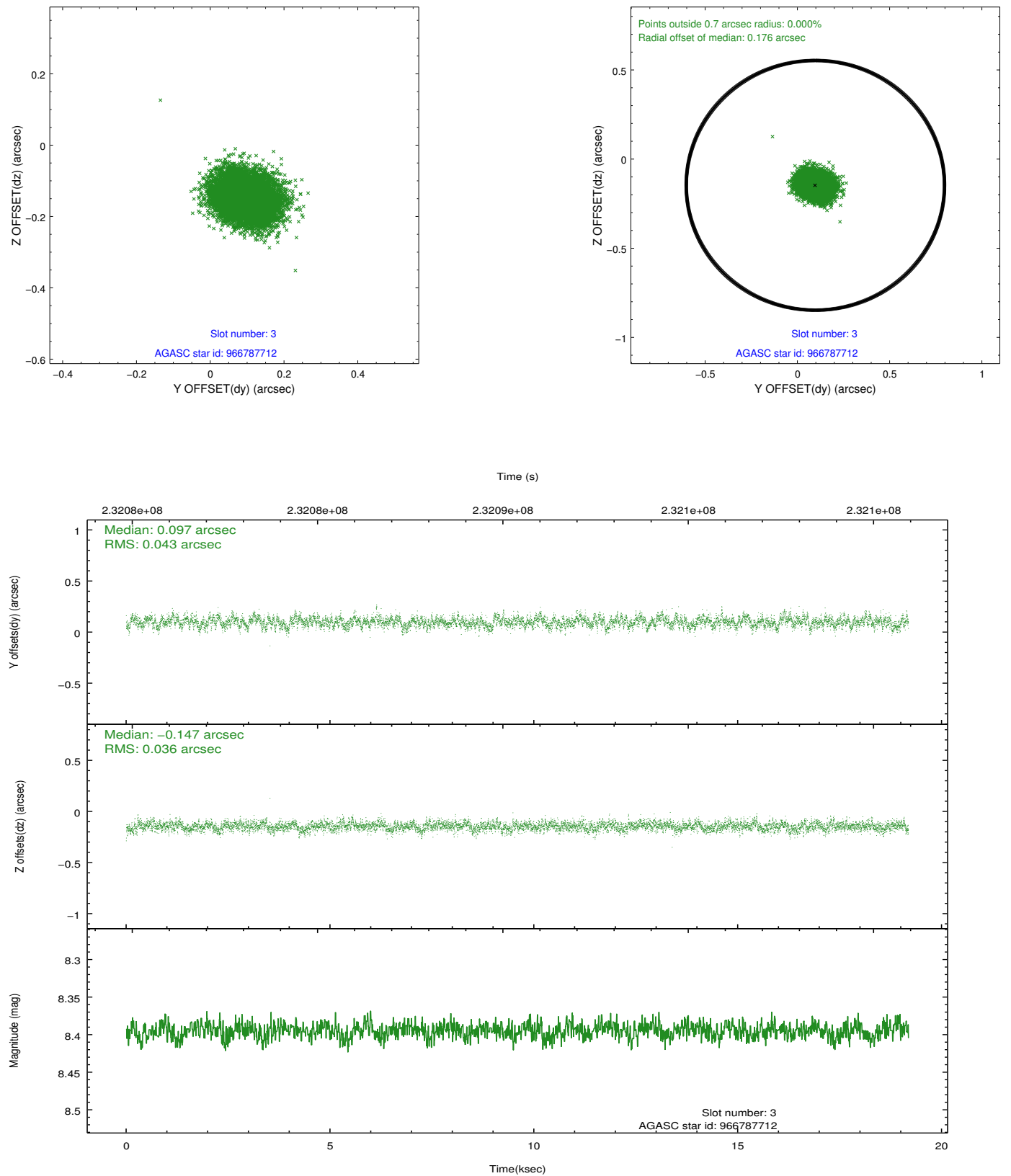


Slot Statistics

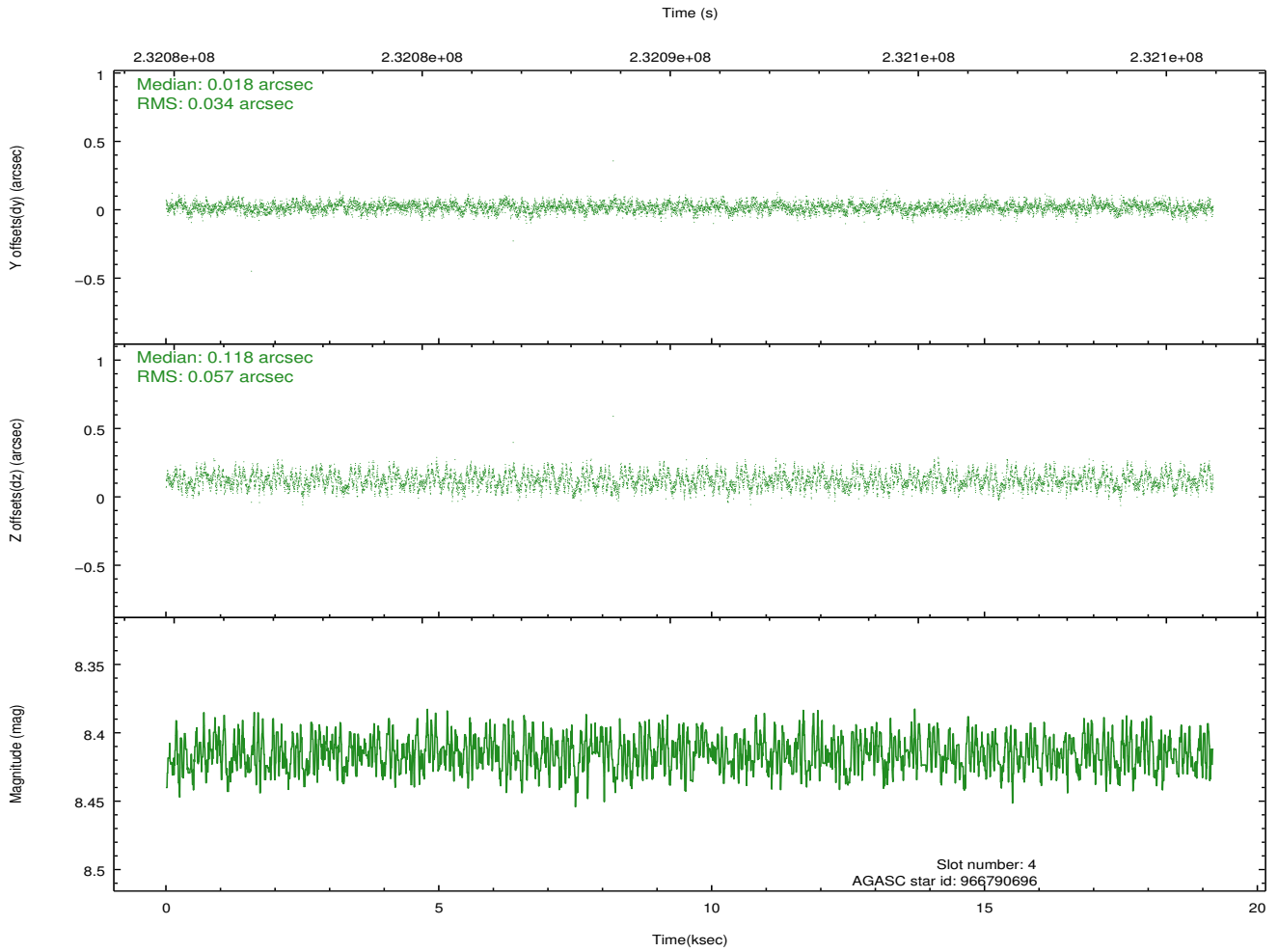
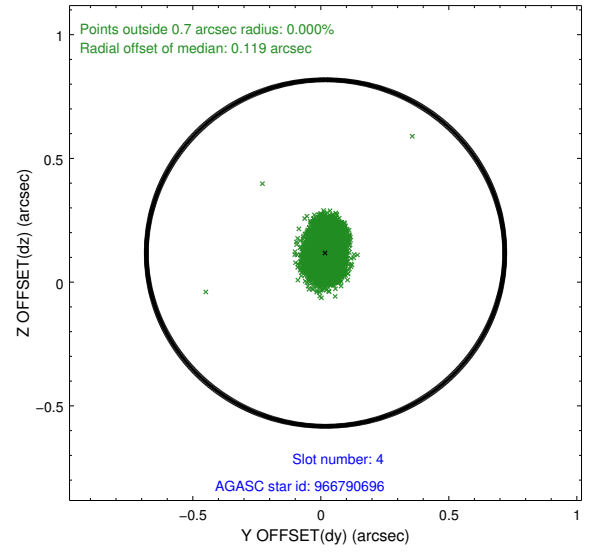
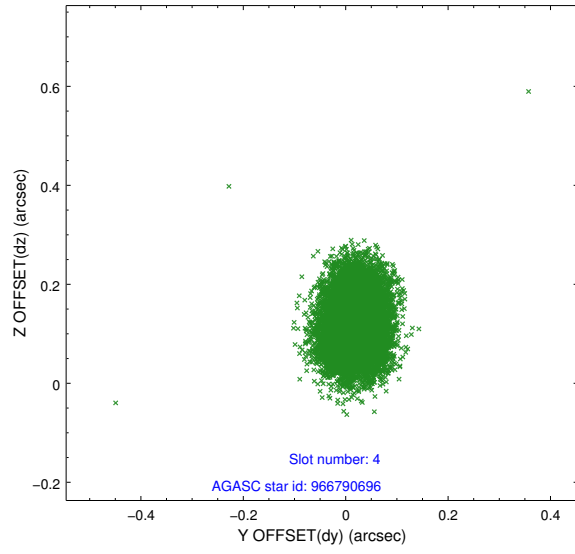
slot	status	id	mag	n_pts	med_dy	med_dz	dr1	dr2	ra	dec	mean_y	mean_z
0	FID	ACIS-S-2	7.10	4680	-0.080	-0.055	0.006	0.011	0.000000	0.000000	-759.85	-1731.02
1	FID	ACIS-S-4	7.21	4680	0.079	0.040	0.006	0.010	0.000000	0.000000	2153.47	177.38
2	FID	ACIS-S-6	7.35	4678	-0.026	0.022	0.007	0.012	0.000000	0.000000	402.42	814.97
3	GUIDE	966787712	8.39	9357	0.097	-0.147	0.059	0.097	263.530944	-31.066254	-2283.59	854.06
4	GUIDE	966790696	8.42	9359	0.018	0.118	0.070	0.112	264.462516	-30.909486	-1112.44	-1831.14
5	GUIDE	966794640	9.35	9355	-0.161	-0.064	0.079	0.128	263.854004	-30.029028	1578.68	692.16
6	GUIDE	966787912	8.21	9358	0.013	-0.164	0.053	0.085	263.385116	-30.640247	-886.98	1631.83
7	GUIDE	966788720	8.33	9356	0.034	0.259	0.070	0.114	264.555693	-31.018346	-1434.56	-2194.90

2.4 Star Slots

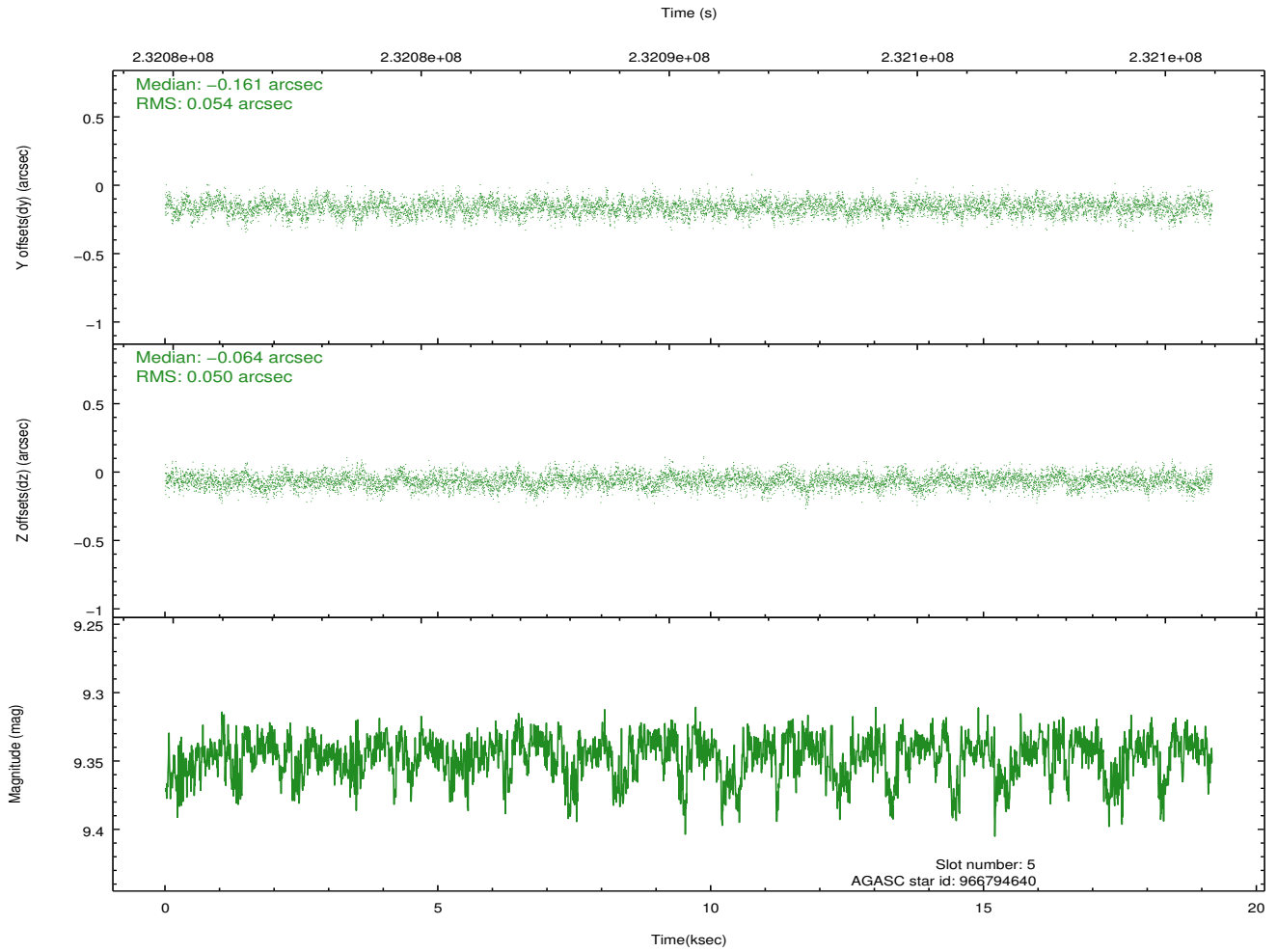
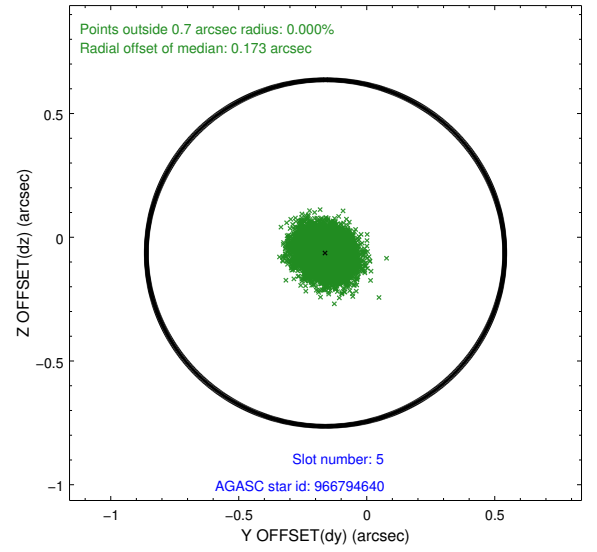
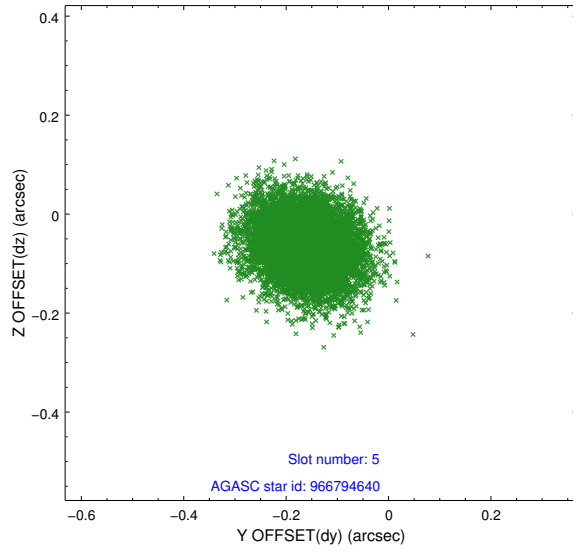
2.4.1 Slot 3



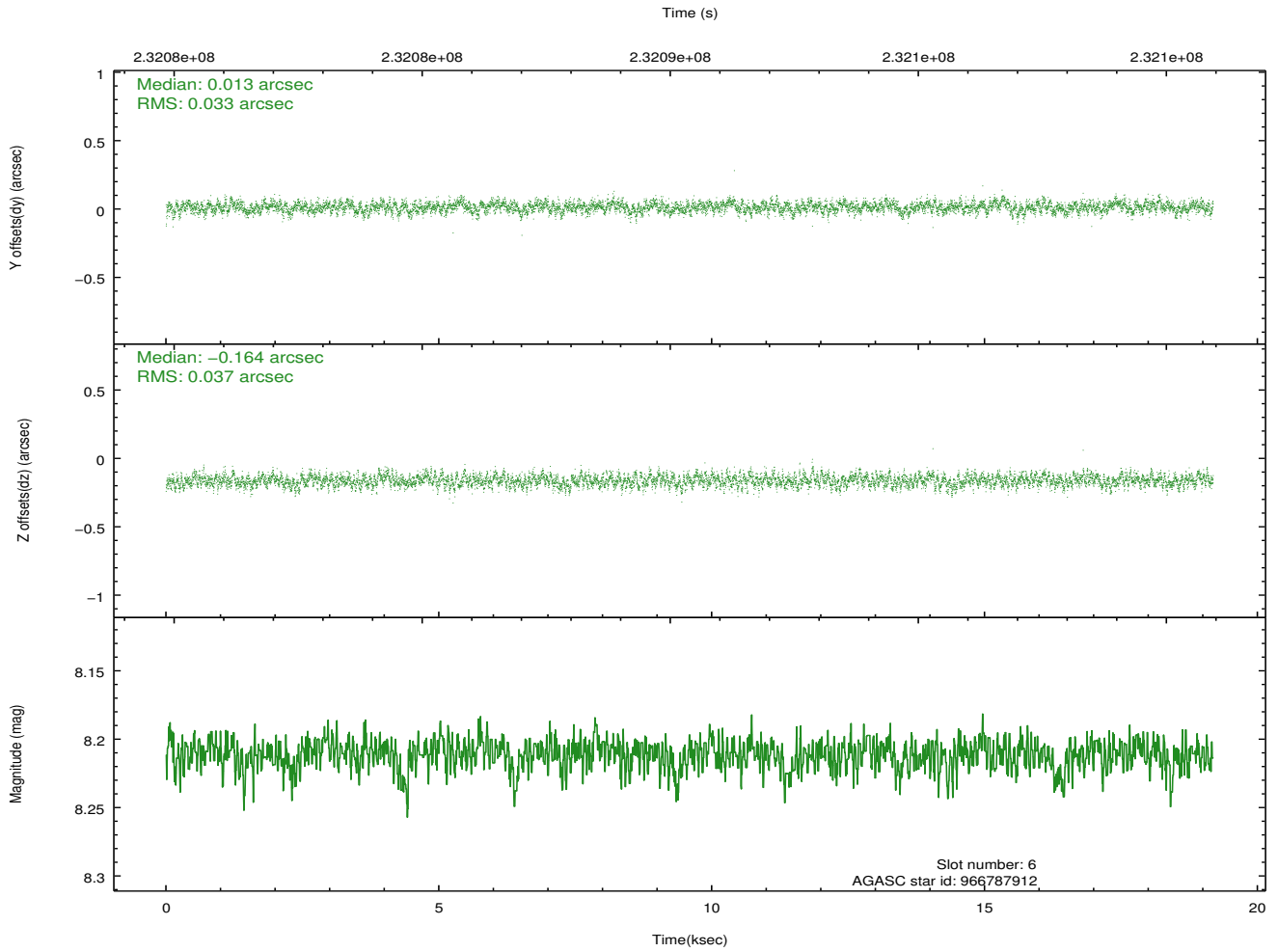
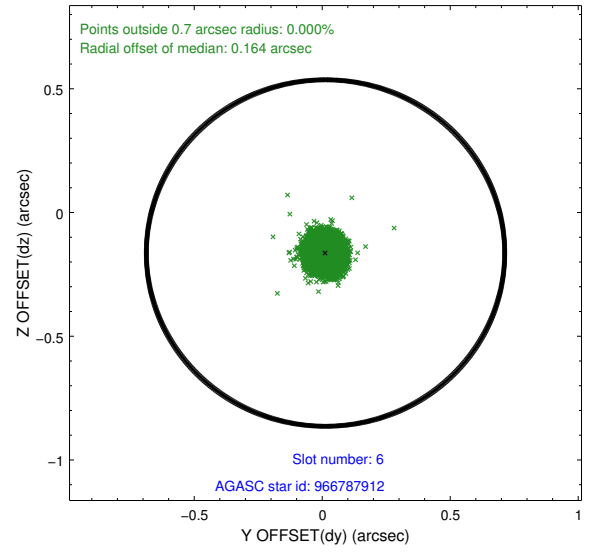
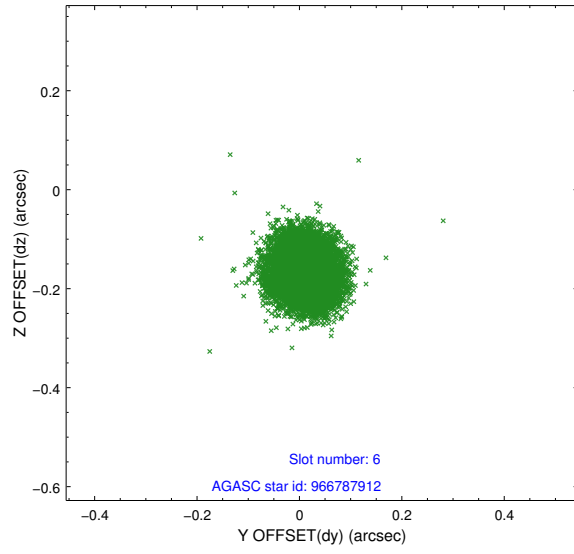
2.4.2 Slot 4



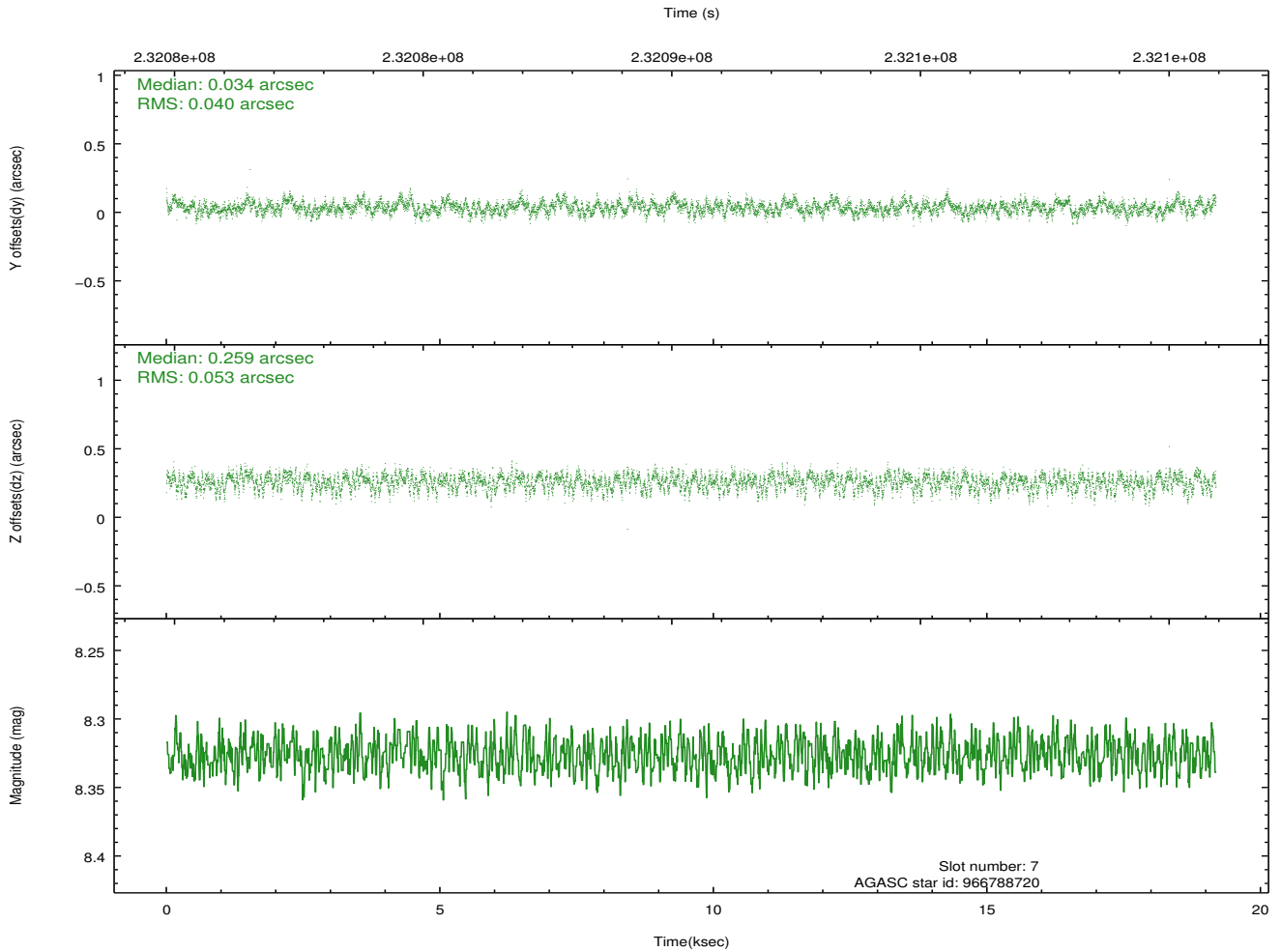
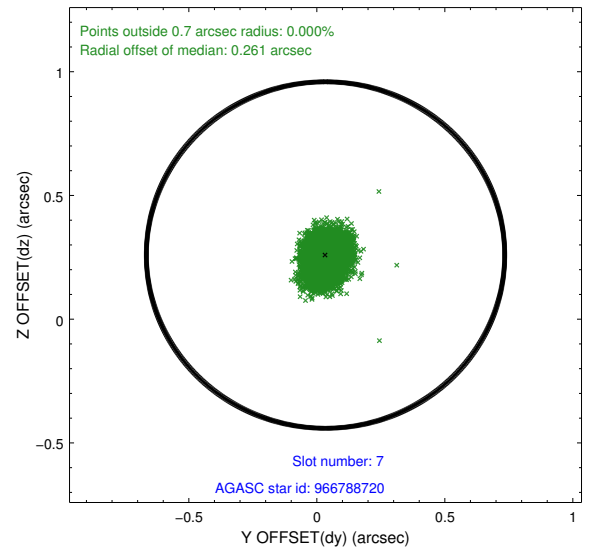
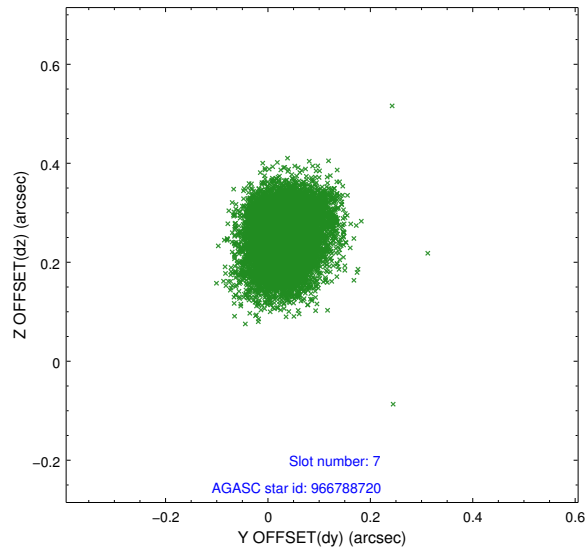
2.4.3 Slot 5



2.4.4 Slot 6

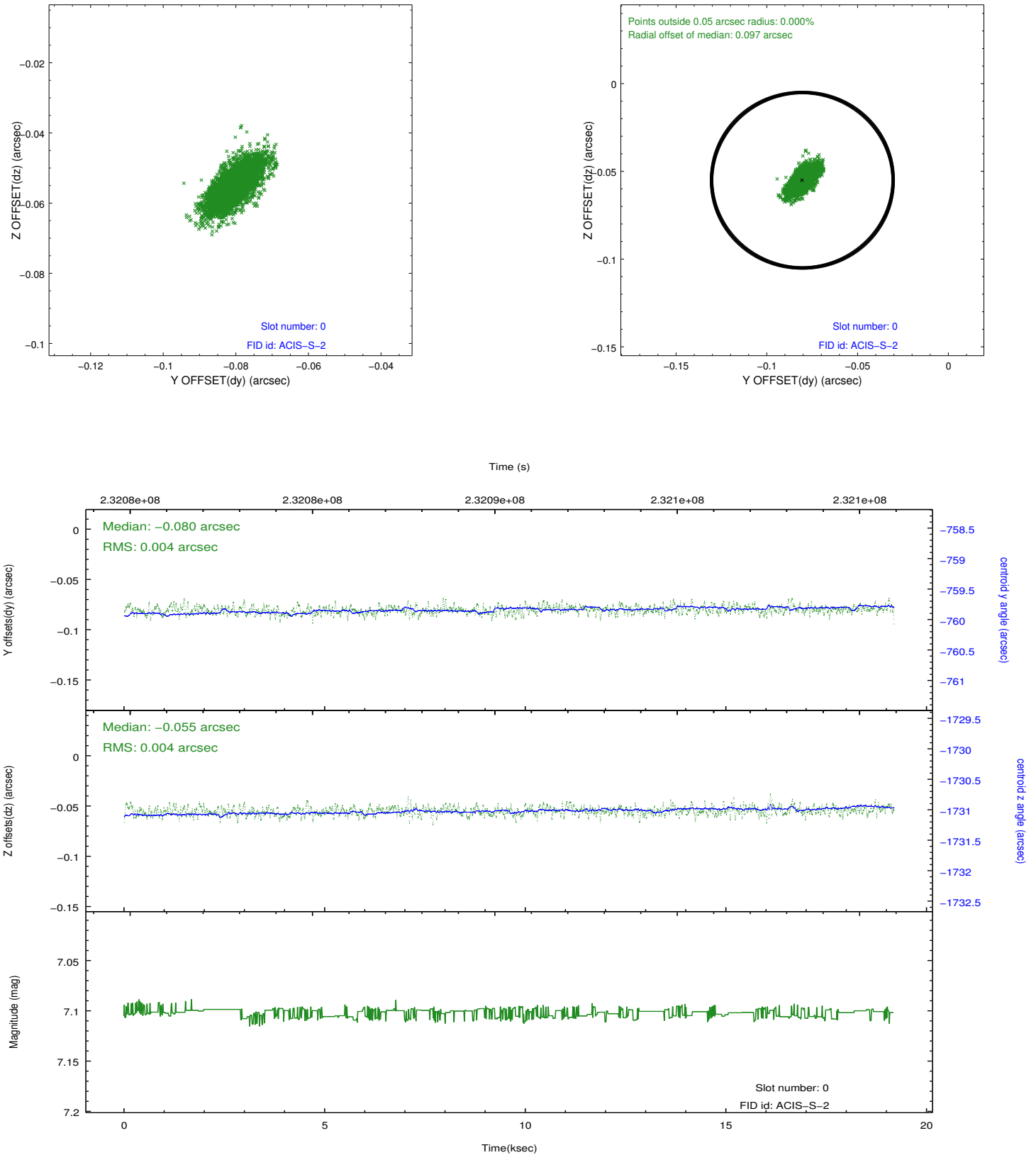


2.4.5 Slot 7

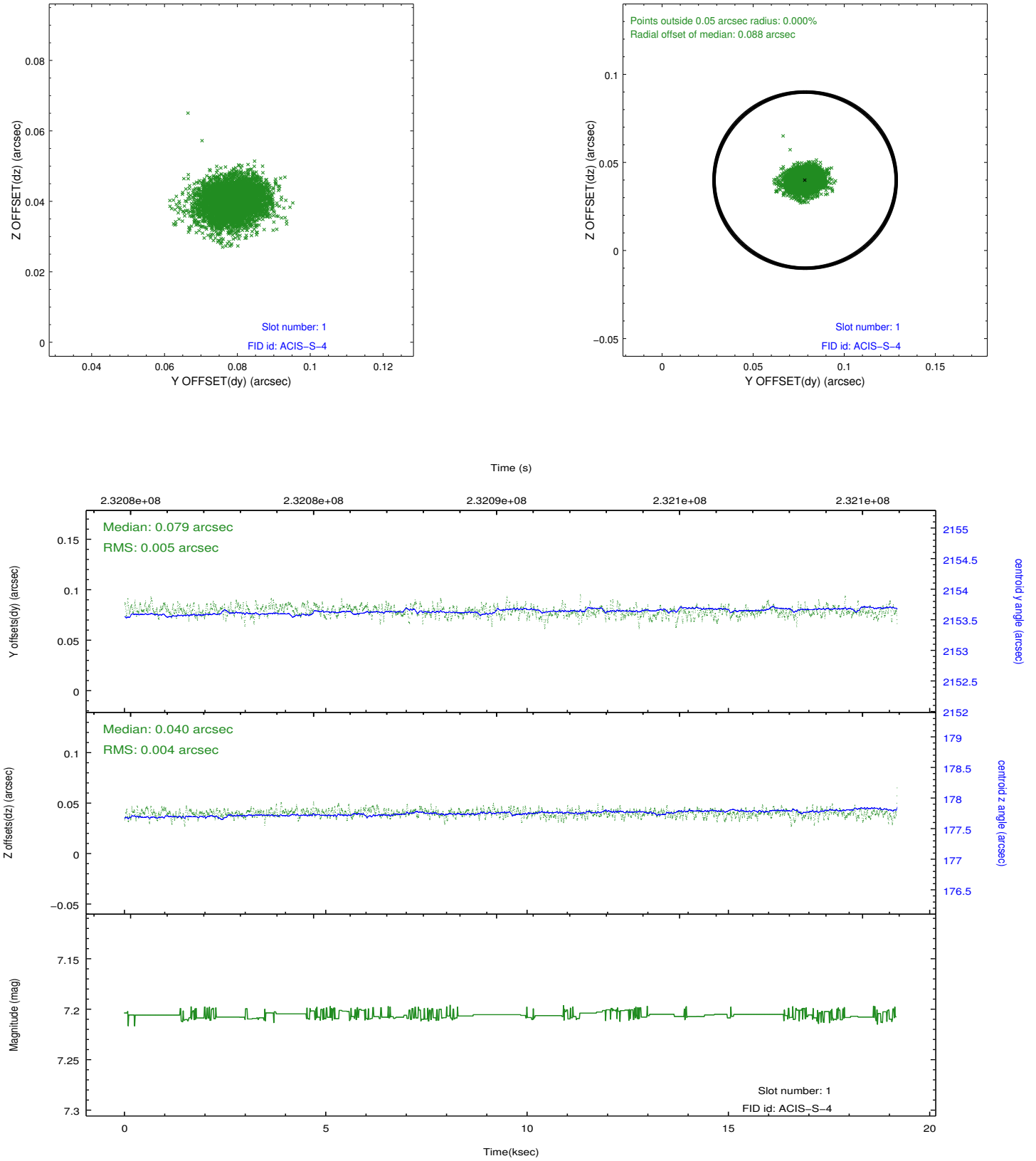


2.5 FID Slots

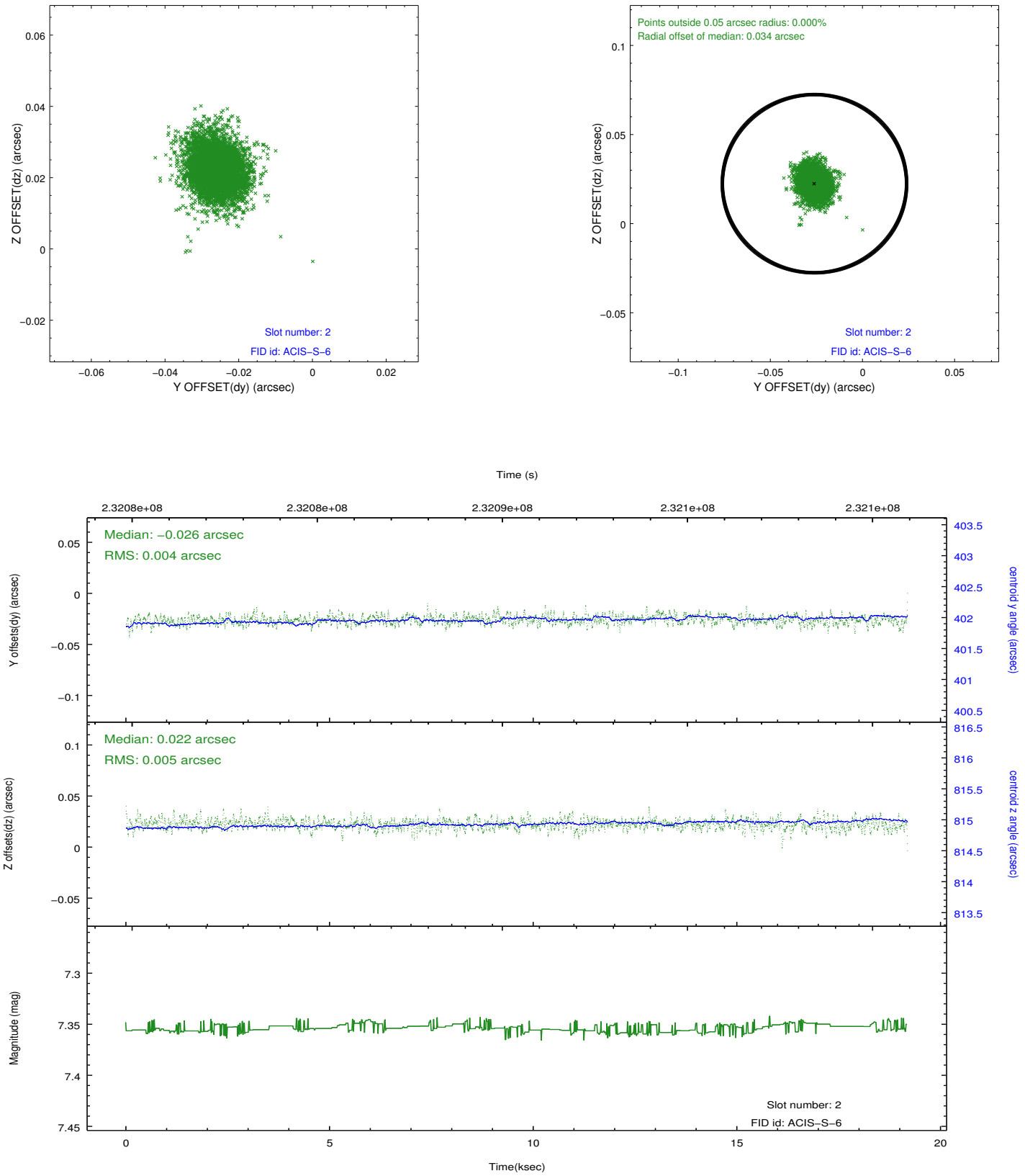
2.5.1 Slot 0



2.5.2 Slot 1



2.5.3 Slot 2



A Summary

A.1 Status

V&V Scientist	Jen Lauer
V&V Date (YYYY-MM-DD)	2013.01.15
V&V Edition	1
V&V Disposition and Status	OK
V&V Charge Time	19.09759

A.2 Comments