

V&V Reference Report

L2 ASCDS Version : 7.6.7

Observation 5464 - L2 Version 002
Chandra X-Ray Center

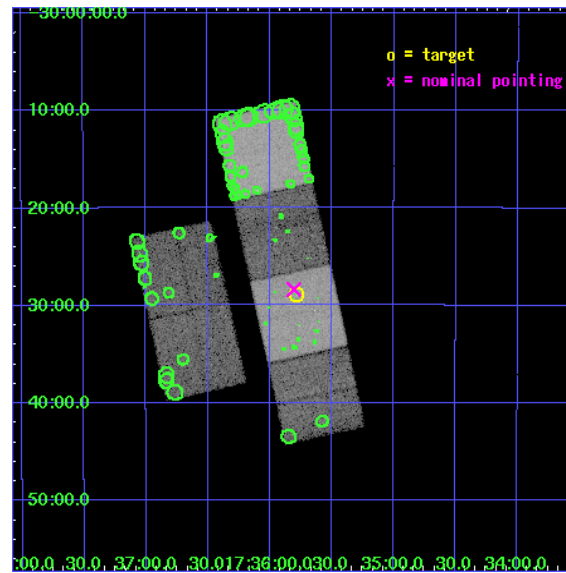
L2 Processing Date: Mar 3 2006

Contents

1	Front	2
2	OBI	3
2.1	OBI	3
2.1.1	Images	3
2.1.2	Bias	3
2.1.3	Parameters	4
2.1.4	Events	4
2.2	Compared Parameters	5
2.3	Aspect	6
2.4	Star Slots	9
2.4.1	Slot 3	9
2.4.2	Slot 4	10
2.4.3	Slot 5	11
2.4.4	Slot 6	12
2.4.5	Slot 7	13
2.5	FID Slots	14
2.5.1	Slot 0	14
2.5.2	Slot 1	15
2.5.3	Slot 2	16
3	Point Sources	17
A	Summary	18
A.1	Status	18
A.2	Comments	18

1 Front

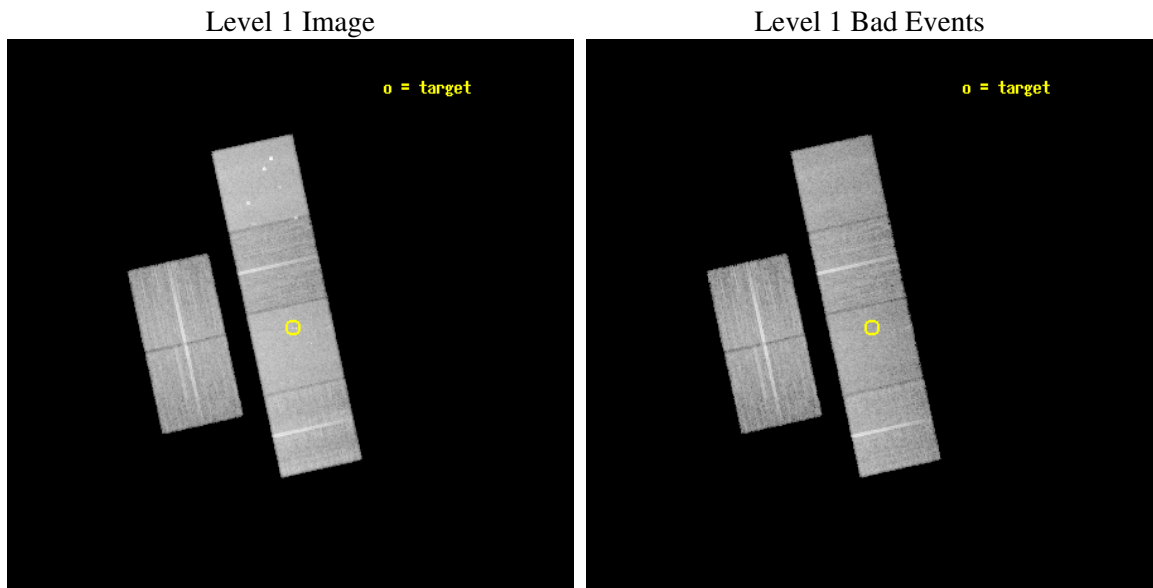
seq_num	400394
obs_id	5464
title	Quiescent X-ray counterparts of Globular Cluster transients
observer	Dr. Rudy Wijnands
object	Terzan 1
dtcycle	0
cycle	P
ra_targ	263.947083
dec_targ	-30.481944
ra_nom	263.95135724213
dec_nom	-30.473020564981
roll_nom	77.675425363756
revision	2
ontime	19097.599928856
livetime	18855.774619363
ontime2	19096.58532539
ontime3	19097.599928856
ontime5	19097.599928856
ontime6	19097.599928856
ontime7	19097.599928856
ontime8	19097.599928856
l2events	226761



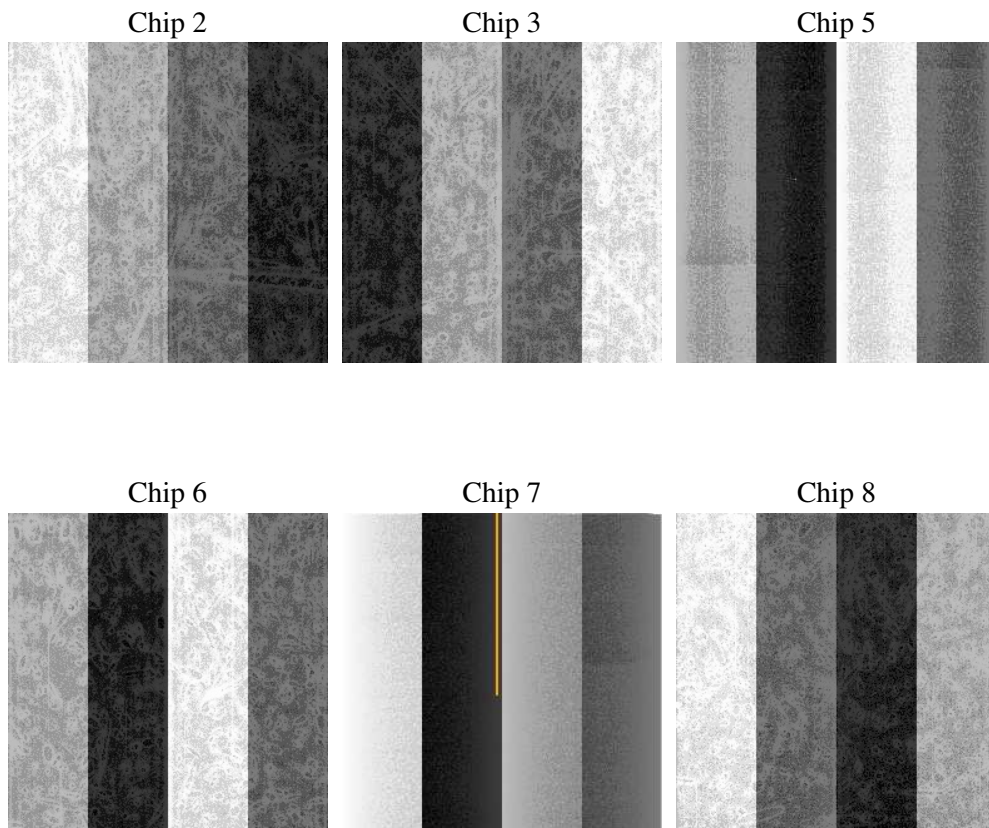
2 OBI

2.1 OBI

2.1.1 Images



2.1.2 Bias



2.1.3 Parameters

obi_num	0
ascdsver	7.6.7
caldsver	3.2.1
date	2006-03-03T09:03:26
revision	2

sched_exp_time	19000.000000
ontime	19102.529639661
ontime2	19099.288619548
ontime3	19102.529639661
ontime5	19102.529639661
ontime6	19102.529639661
ontime7	19102.529639661
ontime8	19102.529639661
l1events	967172

2.1.4 Events

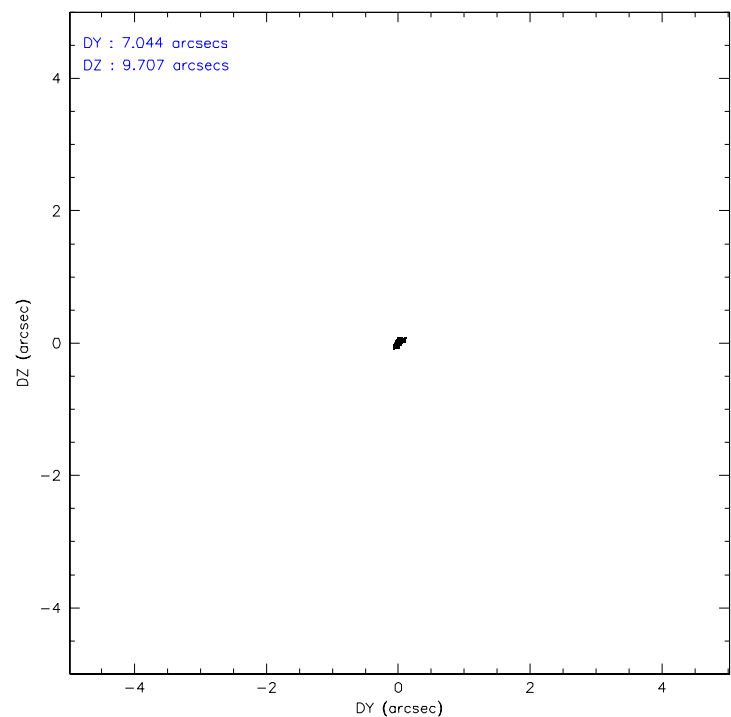
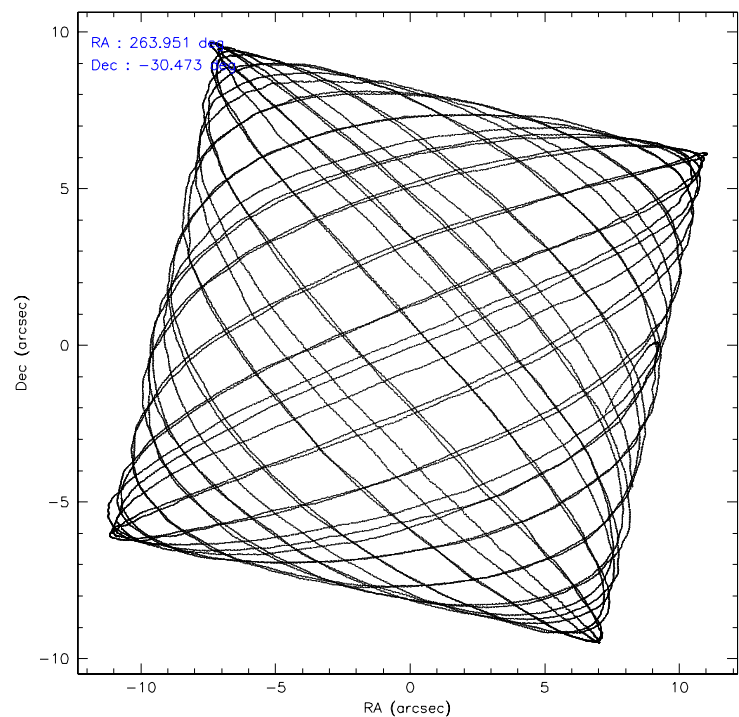
	ccd 2	ccd 3	ccd 5	ccd 6	ccd 7	ccd 8
level 1 events	140986	128661	201310	136882	184567	174766
rejected events	122124	109938	111355	116553	112274	130786
rejected %	86%	85%	55%	85%	60%	74%

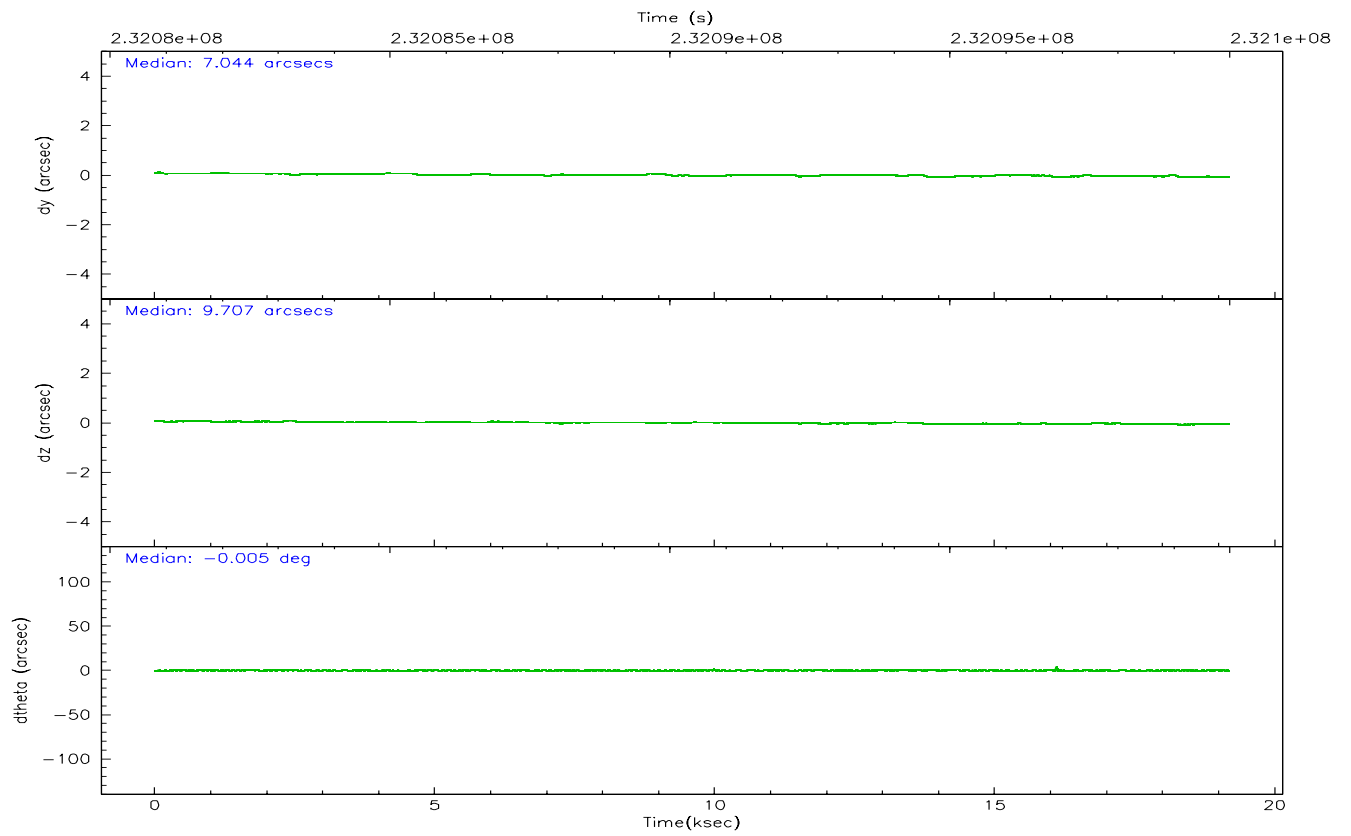
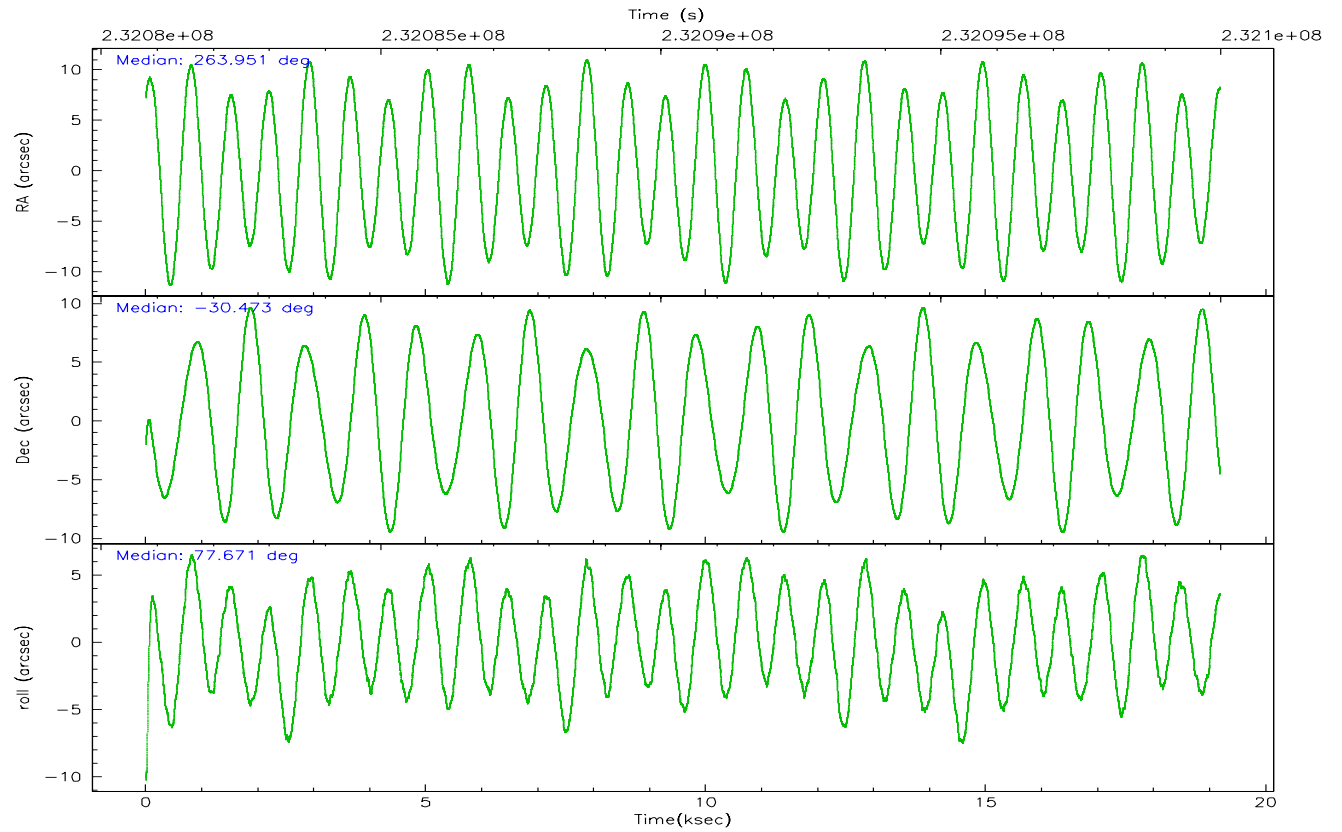
	ccd 2	ccd 3	ccd 5	ccd 6	ccd 7	ccd 8
grade 0 events	8910	8636	7249	8870	4587	15508
	6%	6%	3%	6%	2%	8%
grade 1 events	99	98	210	80	108	135
	0%	0%	0%	0%	0%	0%
grade 2 events	4014	3875	28003	4395	18163	9180
	2%	3%	13%	3%	9%	5%
grade 3 events	1466	1590	2146	1619	3724	4792
	1%	1%	1%	1%	2%	2%
grade 4 events	1506	1514	2068	1730	3602	4381
	1%	1%	1%	1%	1%	2%
grade 5 events	5237	5919	9467	6102	11711	8053
	3%	4%	4%	4%	6%	4%
grade 6 events	2968	3112	50520	3722	42253	10122
	2%	2%	25%	2%	22%	5%
grade 7 events	116786	103917	101647	110364	100419	122595
	82%	80%	50%	80%	54%	70%

2.2 Compared Parameters

Parameter	Planned	Actual	Parameter	Planned	Actual
Instrument	ACIS	ACIS	Obspar format version number	6	6
Detector	ACIS-235678	ACIS-235678	Obspar file type	PREDICTED	ACTUAL
Grating	NONE	NONE	Obspar update status	NONE	UPDATED
Data mode	FAINT	FAINT	On-chip summing requested	N	N
Observation mode	POINTING	POINTING	Subarray requested	NONE	NONE
Pointing RA	263.961363	263.9513572421318	Alternating exposures requested	N	N
Pointing Dec	-30.498838	-30.47302056498143	Primary exposure time	0.000000	3.2
Pointing Roll	77.523877	77.67542536375635			
SIM focus pos (mm)	-0.684267	-0.6828225247311905			
SIM defocus (mm)	0	0.001444936568705701			
SIM translation stage pos (mm)	-190.132523	-190.1400660498719			
SIM translation stage offset (mm)	0	0.00754346686406393			
Observation start time	232080991.184000	232079961.19245			
Observation start date	2005-05-10T02:55:27	2005-05-10T02:39:21			
Observation end time	232099991.184000	232100280.79338			
Observation end date	2005-05-10T08:12:07	2005-05-10T08:18:00			
Read mode	TIMED	TIMED			

2.3 Aspect



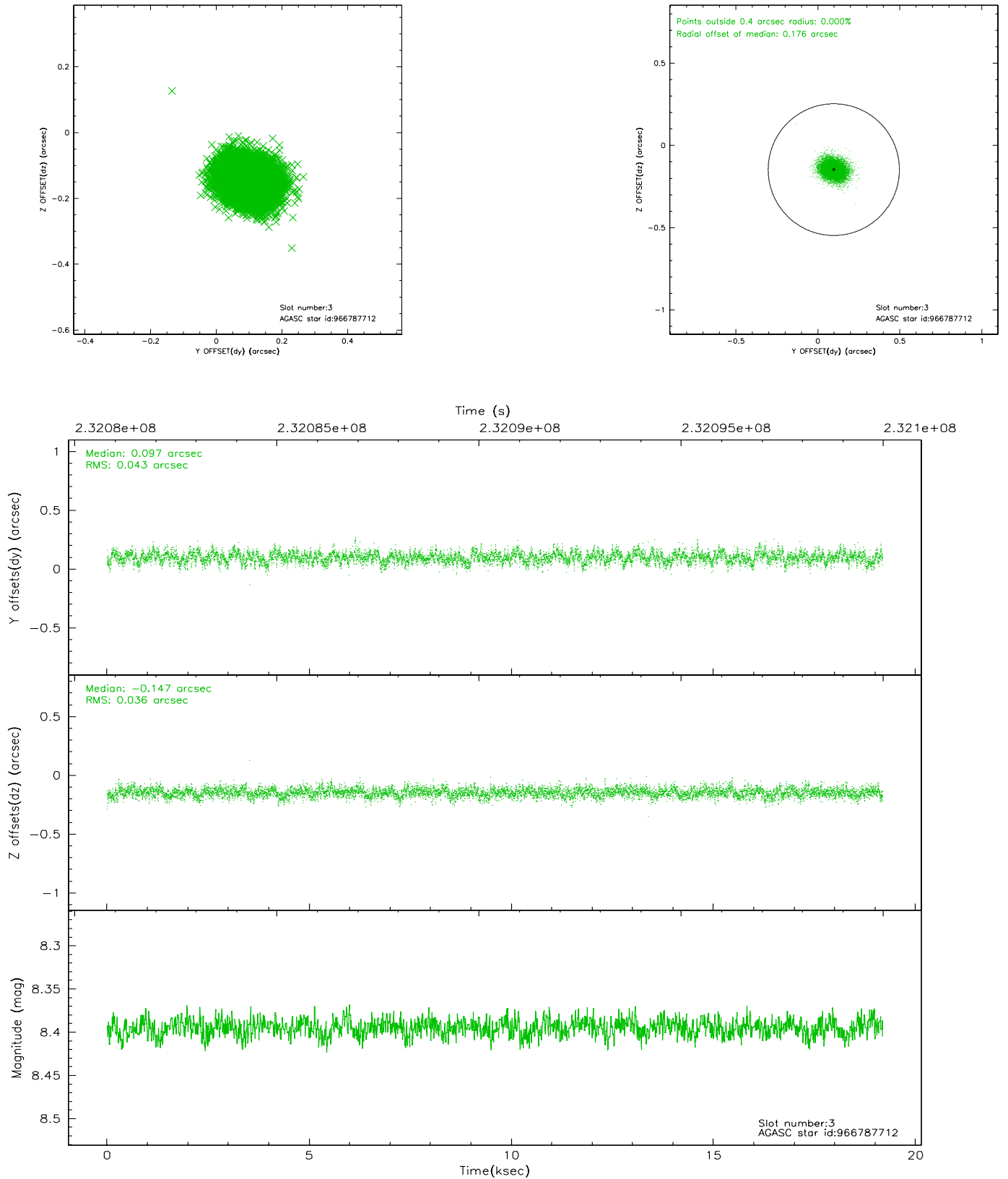


Slot Statistics

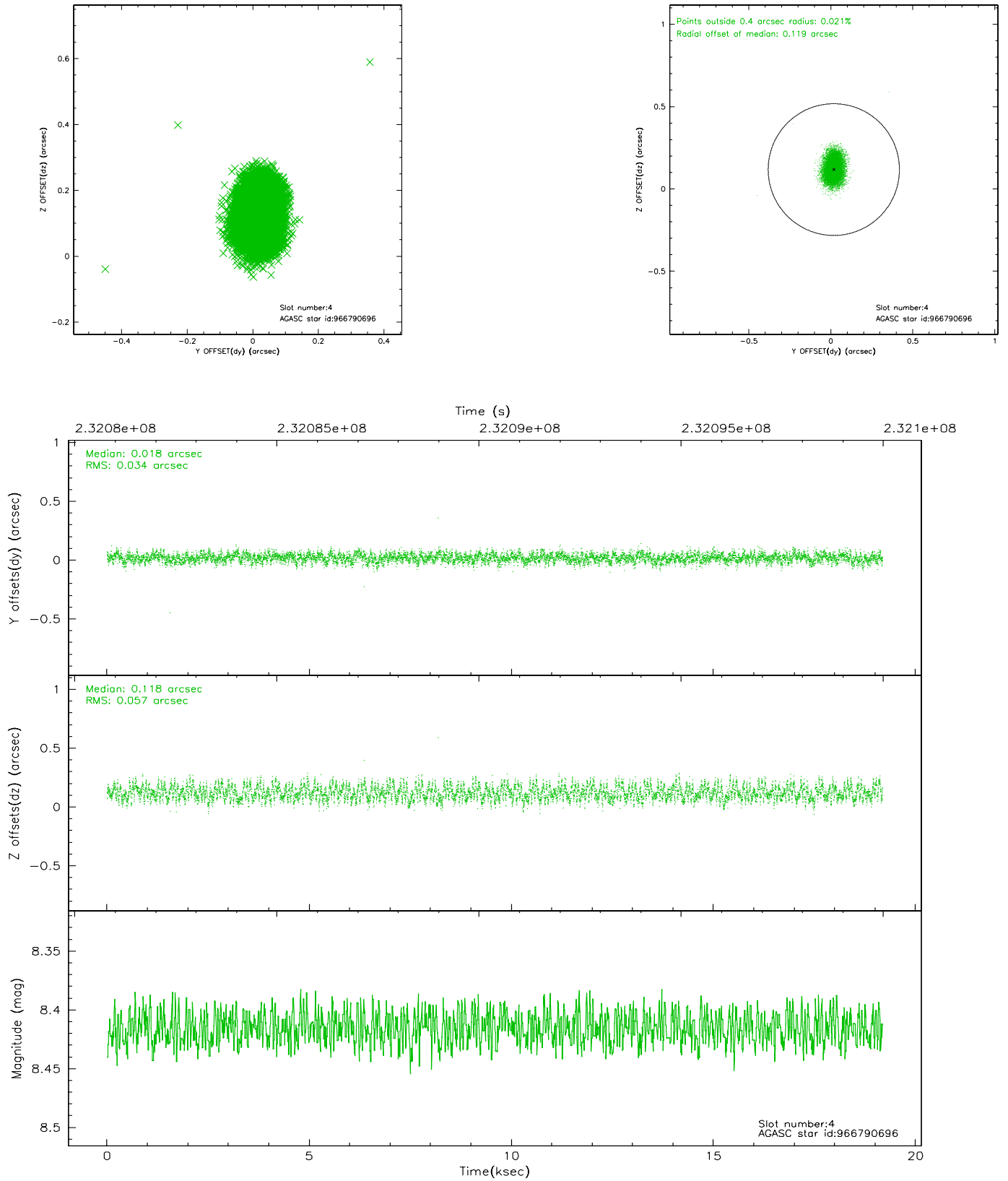
slot	status	id	mag	n_pts	med_dy	med_dz	dr1	dr2	ra	dec	mean_y	mean_z
0	FID	ACIS-S-2	7.10	4680	-0.055	-0.028	0.005	0.009	0.000000	0.000000	-759.83	-1730.98
1	FID	ACIS-S-4	7.21	4680	0.050	0.032	0.006	0.010	0.000000	0.000000	2153.43	177.39
2	FID	ACIS-S-6	7.35	4678	-0.022	0.003	0.007	0.011	0.000000	0.000000	402.41	814.96
3	GUIDE	966787712	8.39	9357	0.097	-0.147	0.059	0.097	263.530944	-31.066254	-2283.59	854.06
4	GUIDE	966790696	8.42	9359	0.018	0.118	0.070	0.112	264.462516	-30.909486	-1112.44	-1831.14
5	GUIDE	966794640	9.35	9355	-0.161	-0.064	0.079	0.128	263.854004	-30.029028	1578.68	692.16
6	GUIDE	966787912	8.21	9358	0.013	-0.164	0.053	0.085	263.385116	-30.640247	-886.98	1631.83
7	GUIDE	966788720	8.33	9356	0.034	0.259	0.070	0.114	264.555693	-31.018346	-1434.56	-2194.90

2.4 Star Slots

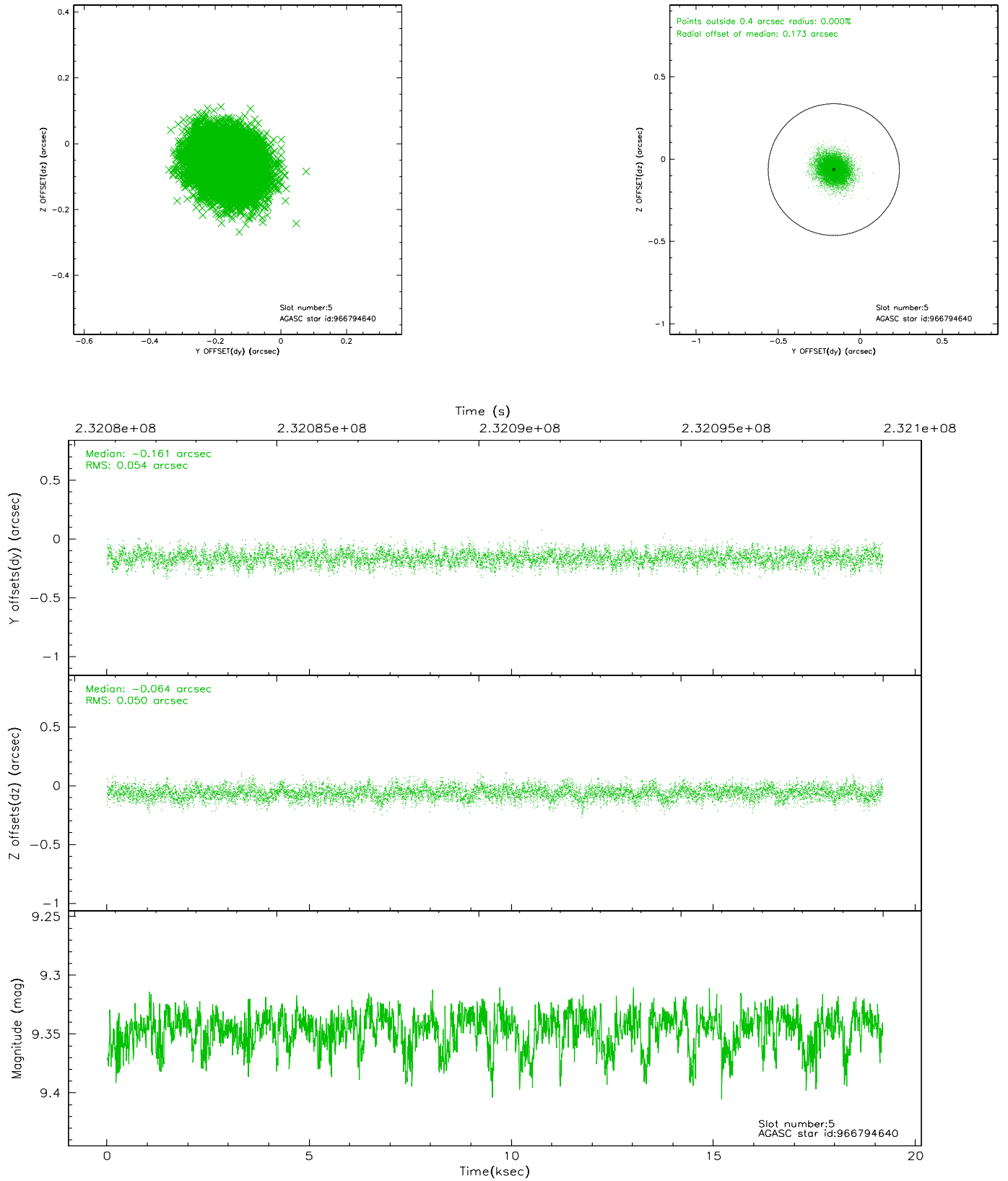
2.4.1 Slot 3



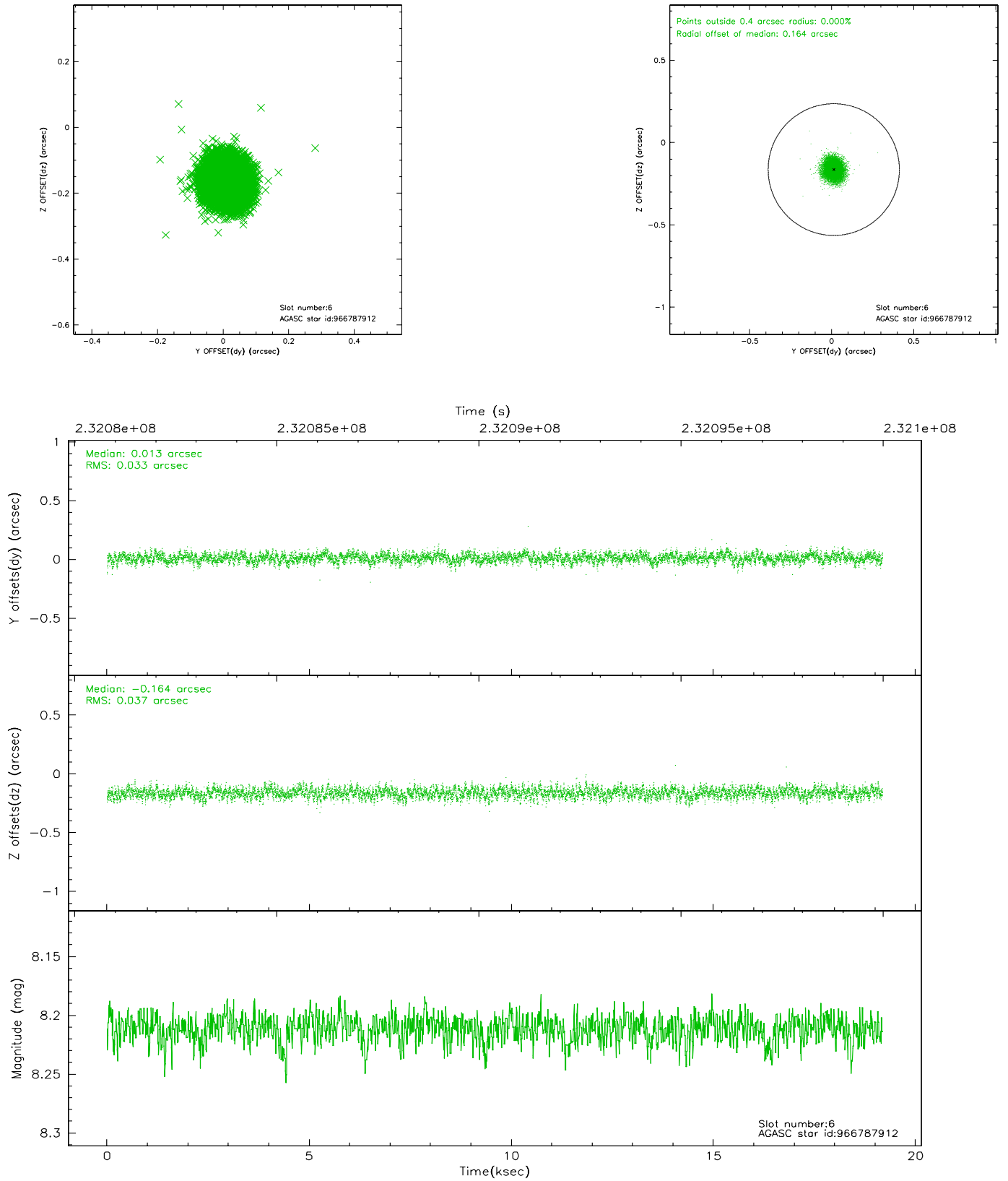
2.4.2 Slot 4



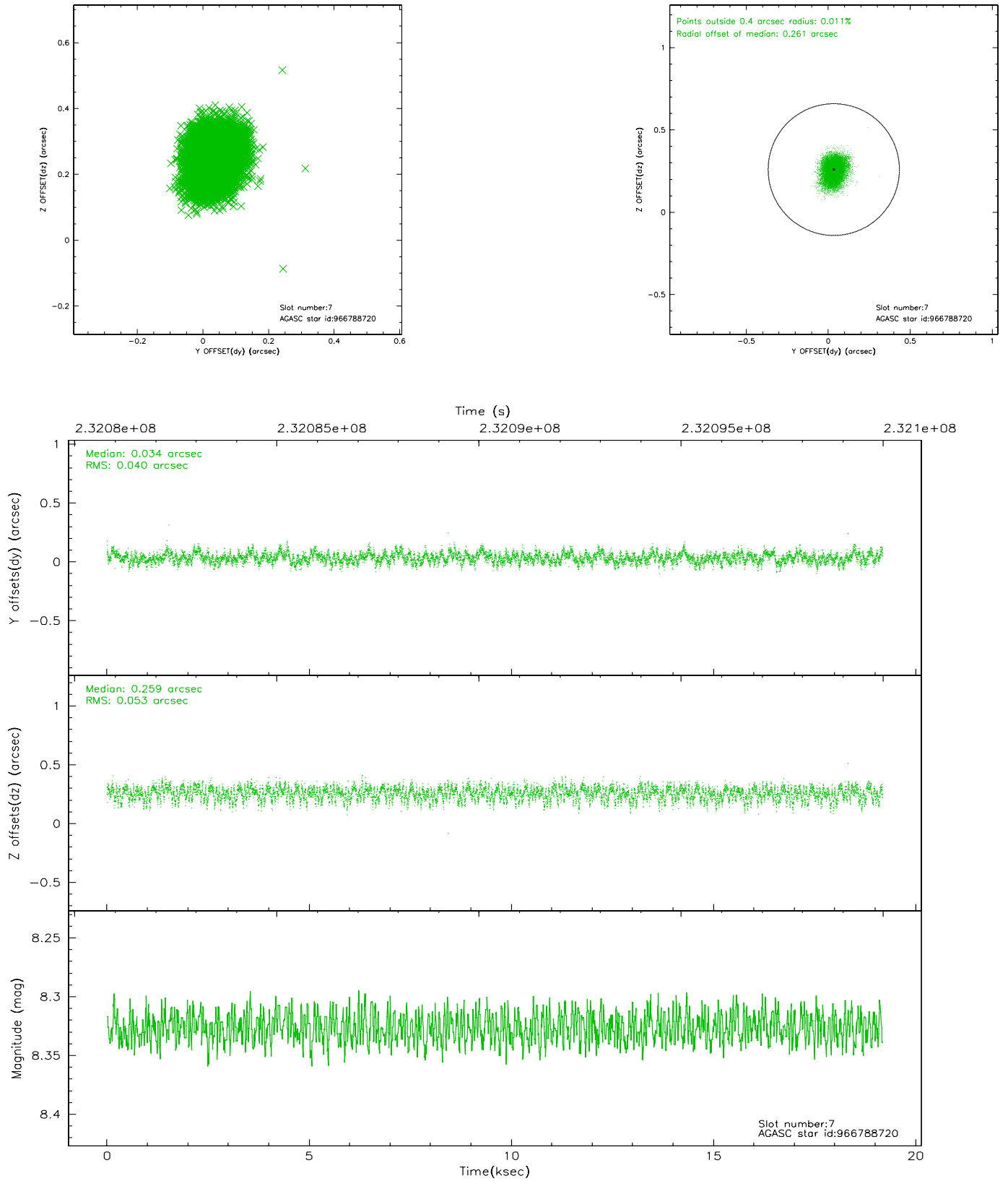
2.4.3 Slot 5



2.4.4 Slot 6

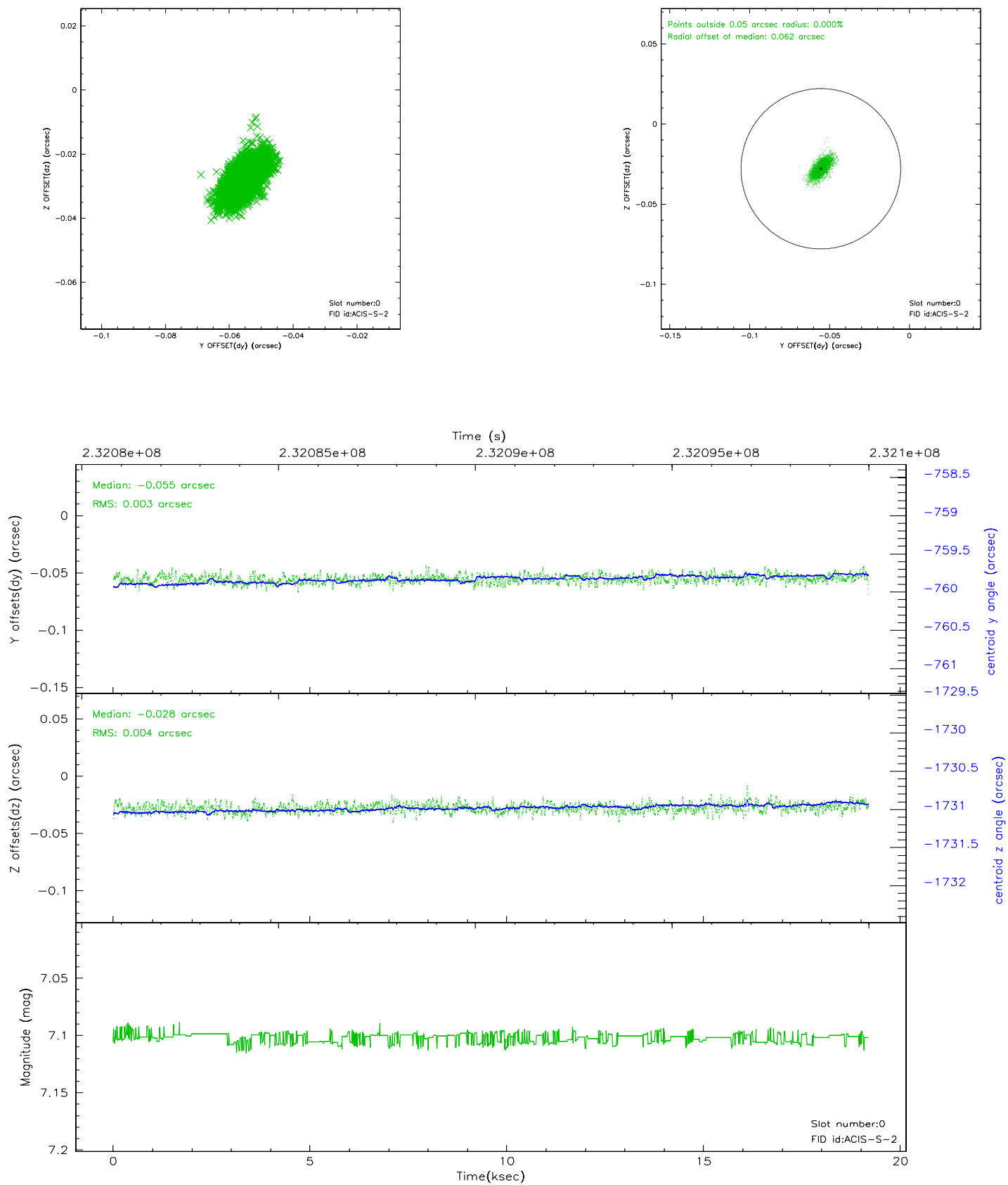


2.4.5 Slot 7

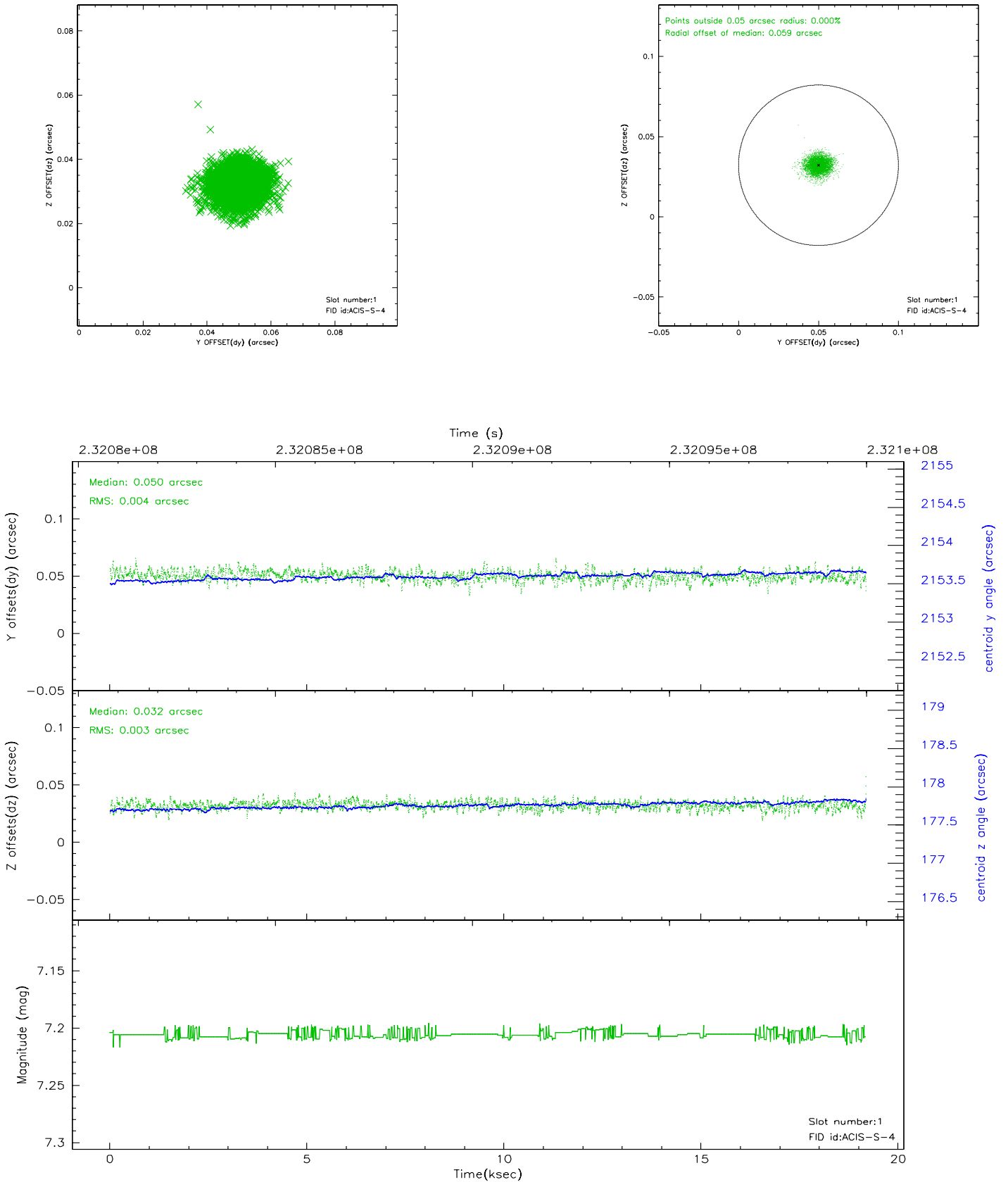


2.5 FID Slots

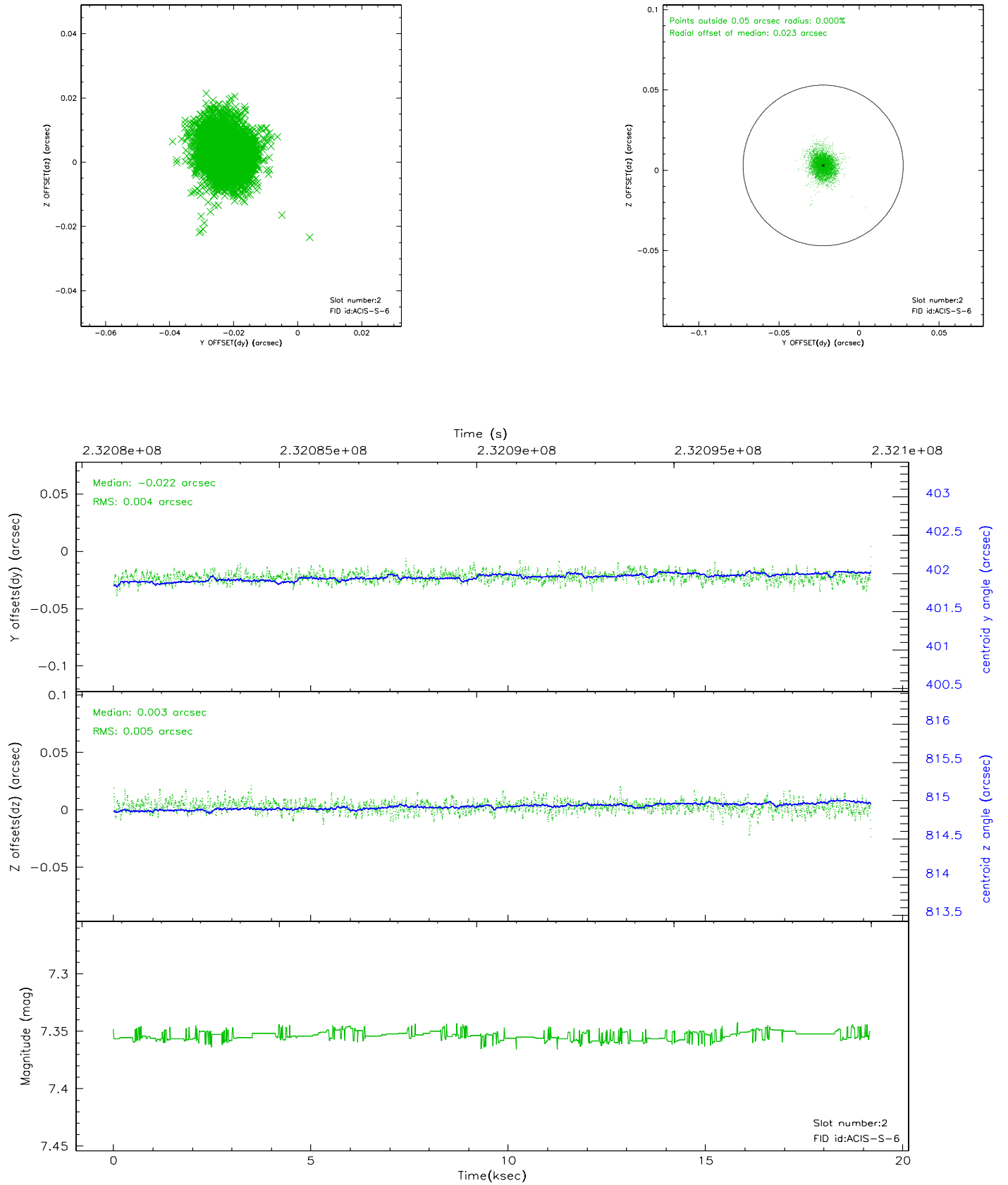
2.5.1 Slot 0



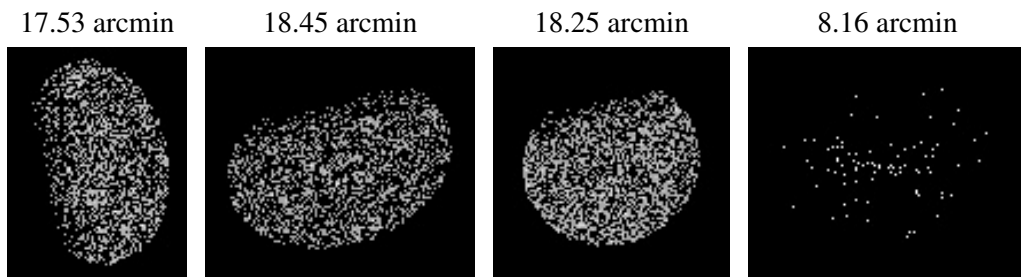
2.5.2 Slot 1



2.5.3 Slot 2



3 Point Sources



A Summary

A.1 Status

V&V Scientist	Beth Sundheim
V&V Date (YYYY-MM-DD)	2006.03.03
V&V Edition	1
V&V Disposition and Status	OK
V&V Charge Time	19.09759

A.2 Comments