

V&V Reference Report

L2 ASCDS Version : 7.6.7.1

Observation 6266 - L2 Version 002
Chandra X-Ray Center

L2 Processing Date : Mar 8 2006

Contents

1	Front	2
2	OBI	3
2.1	OBI	3
2.1.1	Images	3
2.1.2	Bias	3
2.1.3	Parameters	4
2.1.4	Events	4
2.2	Compared Parameters	5
2.3	Aspect	6
2.4	Star Slots	9
2.4.1	Slot 3	9
2.4.2	Slot 4	10
2.4.3	Slot 5	11
2.4.4	Slot 6	12
2.4.5	Slot 7	13
2.5	FID Slots	14
2.5.1	Slot 0	14
2.5.2	Slot 1	15
2.5.3	Slot 2	16
3	Point Sources	17
A	Summary	18
A.1	Status	18
A.2	Comments	18

1 Front

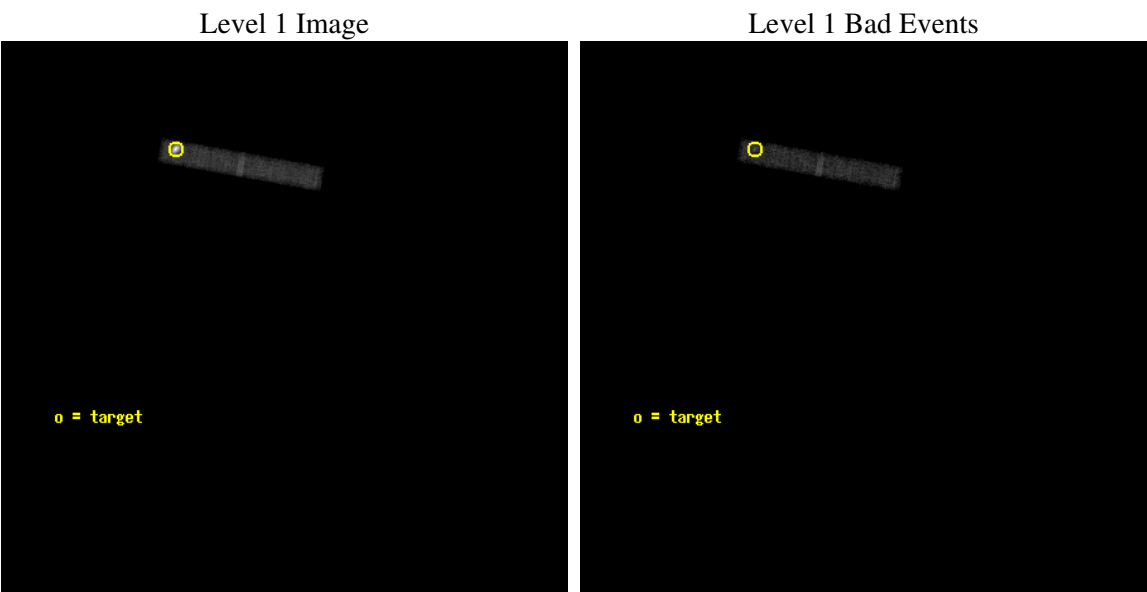
seq_num	300163
obs_id	6266
title	The lightcurve and spectra of the cataclysmic variable EI UMa
observer	Dr. Peter Predehl
object	EI UMa
dtcycle	0
cycle	P
ra_targ	129.591667
dec_targ	48.633806
ra_nom	129.44912545516
dec_nom	48.483845246681
roll_nom	280.19850902155
revision	2
ontime	27827.159374624
livetime	25237.764714878
ontime3	27827.159374624
l2events	48646



2 OBI

2.1 OBI

2.1.1 Images



2.1.2 Bias

Chip 3



2.1.3 Parameters

obi_num	0
ascdsver	7.6.7.1
caldbver	3.2.1
date	2006-03-08T21:52:40
revision	2

sched_exp_time	27657.335000
ontime	29011.707563788
ontime3	29011.707563788
l1events	90963

2.1.4 Events

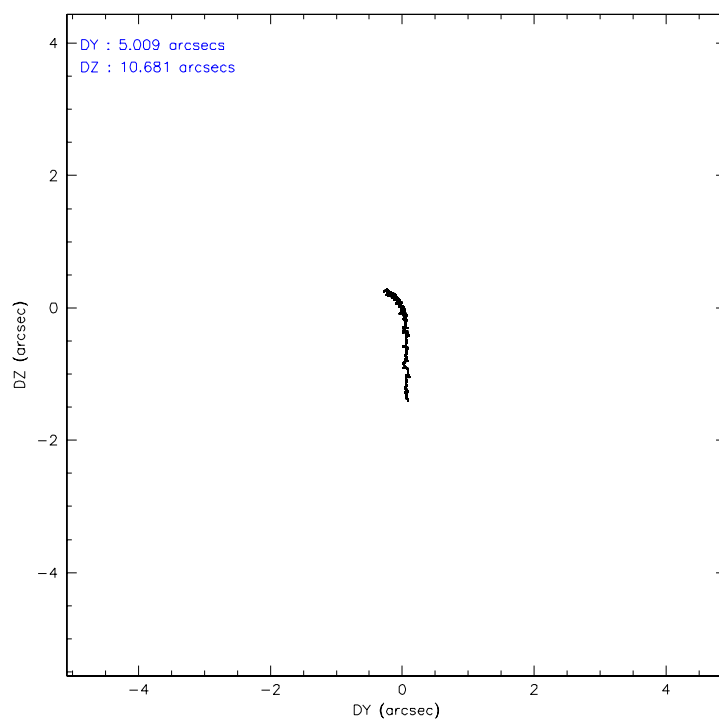
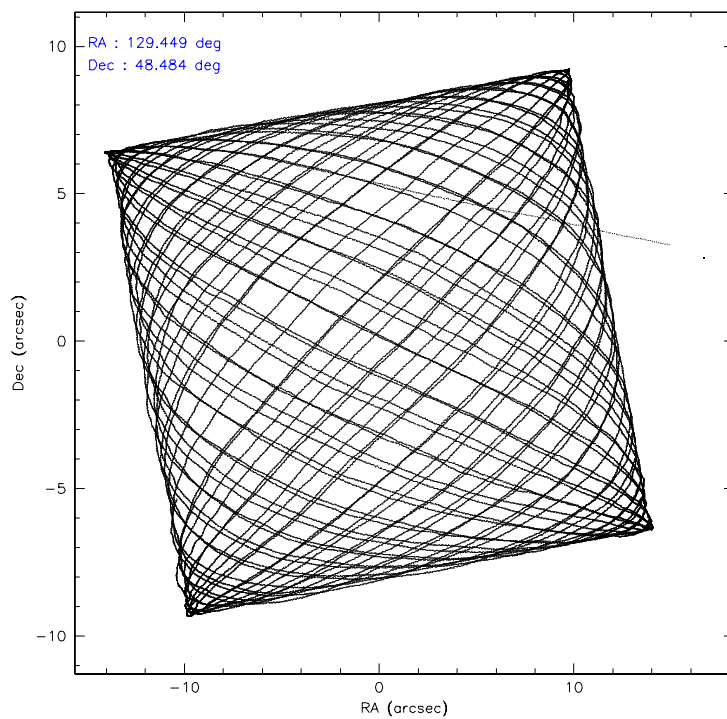
	ccd 3
level 1 events	90963
rejected events	41151
rejected %	45%

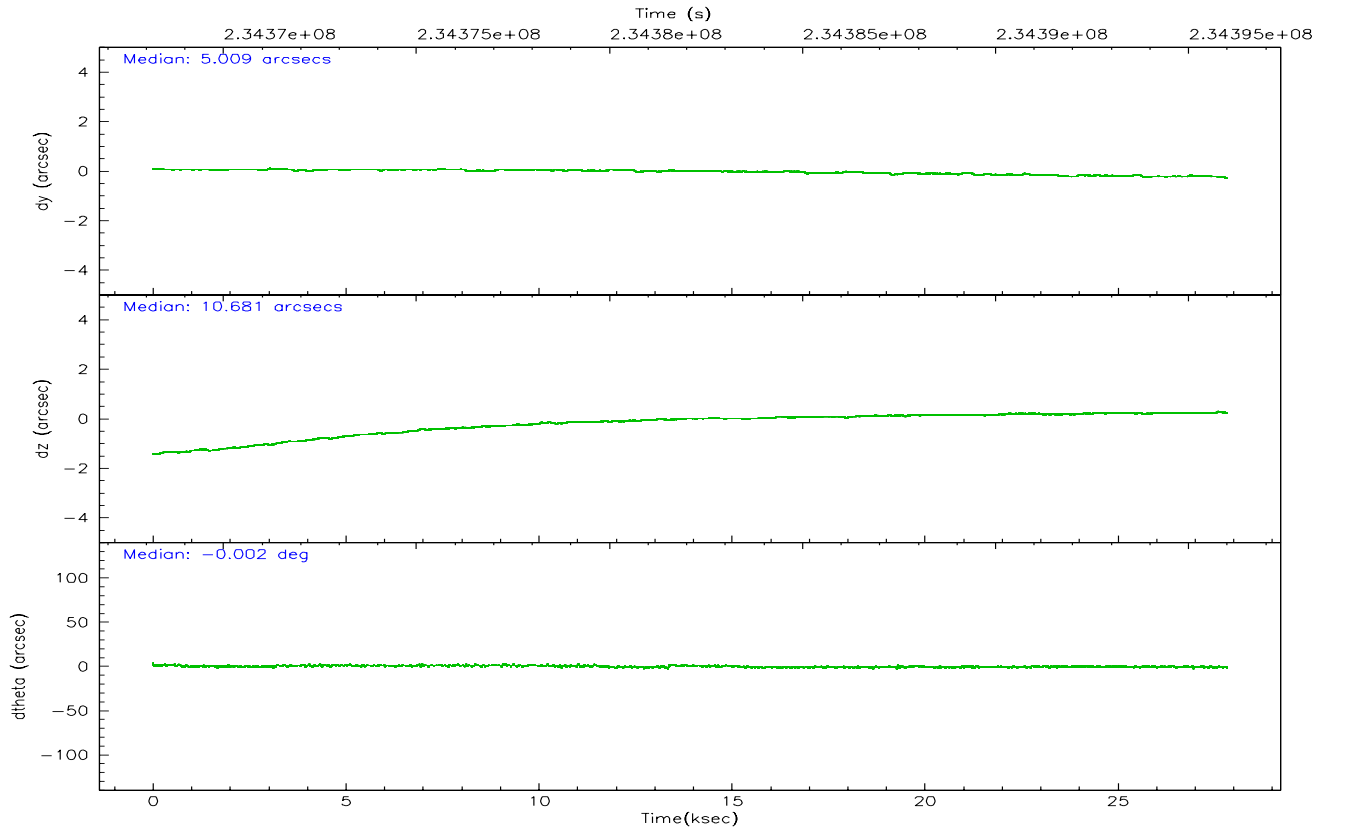
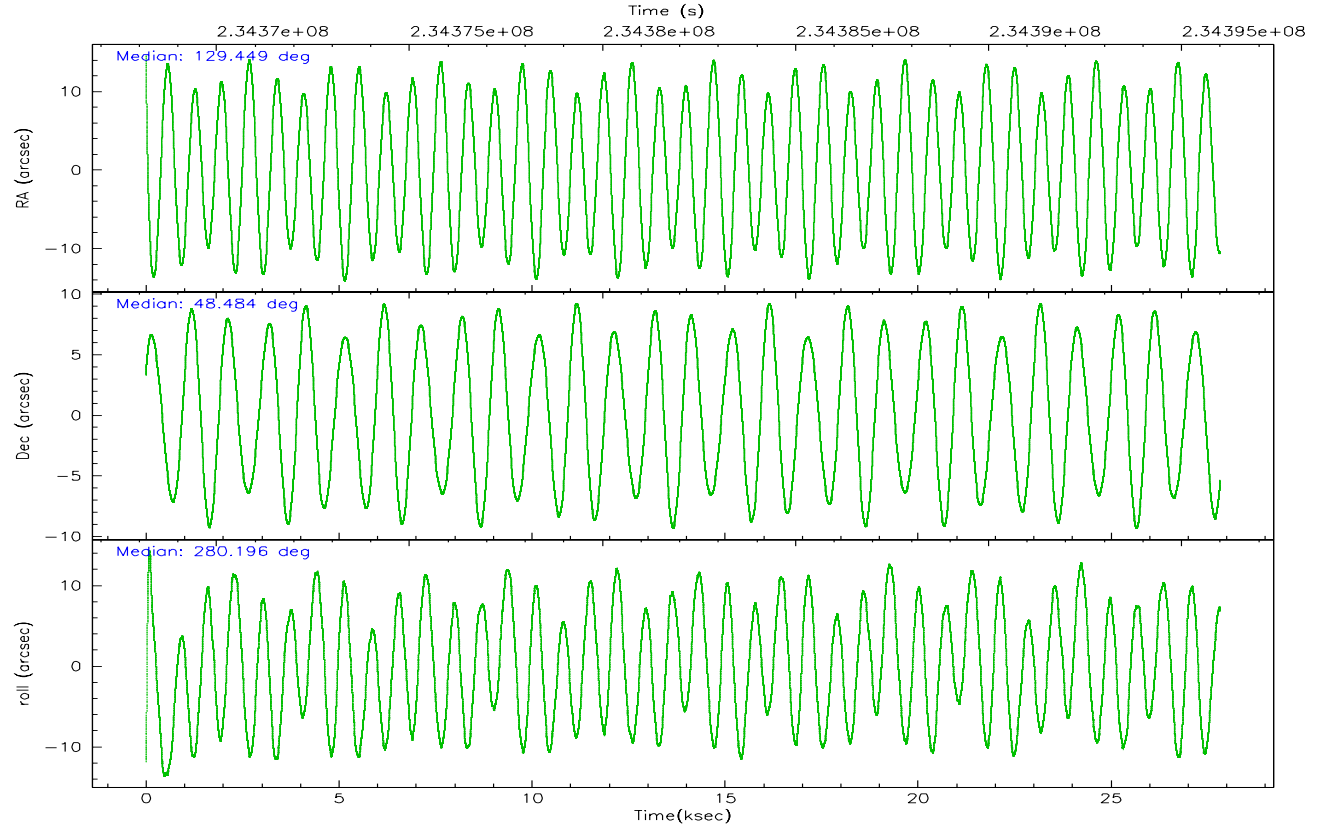
	ccd 3
grade 0 events	35836
	39%
grade 1 events	102
	0%
grade 2 events	6084
	6%
grade 3 events	2724
	2%
grade 4 events	2631
	2%
grade 5 events	1309
	1%
grade 6 events	2906
	3%
grade 7 events	39371
	43%

2.2 Compared Parameters

Parameter	Planned	Actual	Parameter	Planned	Actual
Instrument	ACIS	ACIS	Obspar format version number	6	6
Detector	ACIS-3	ACIS-3	Obspar file type	PREDICTED	ACTUAL
Grating	NONE	NONE	Obspar update status	NONE	UPDATED
Data mode	FAINT	FAINT	On-chip summing requested	N	N
Observation mode	POINTING	POINTING	Subarray requested	CUSTOM	1/8
Pointing RA	129.422336	129.4491254551586	Subarray start row	1	1
Pointing Dec	48.504678	48.48384524668089	Subarray row count	128	128
Pointing Roll	280.009896	280.1985090215514	Alternating exposures requested	N	N
SIM focus pos (mm)	-0.782348	-0.7809083437167272	Primary exposure time	0.000000	0.4
SIM defocus (mm)	0	0.001439871863259334			
SIM translation stage pos (mm)	-233.592463	-233.5874344608287			
SIM translation stage offset (mm)	0	-0.005018542100998502			
Observation start time	234368345.184000	234366991.00918			
Observation start date	2005-06-05T14:18:01	2005-06-05T13:56:31			
Observation end time	234396002.184000	234396241.43552			
Observation end date	2005-06-05T21:58:58	2005-06-05T22:04:01			
Read mode	TIMED	TIMED			

2.3 Aspect



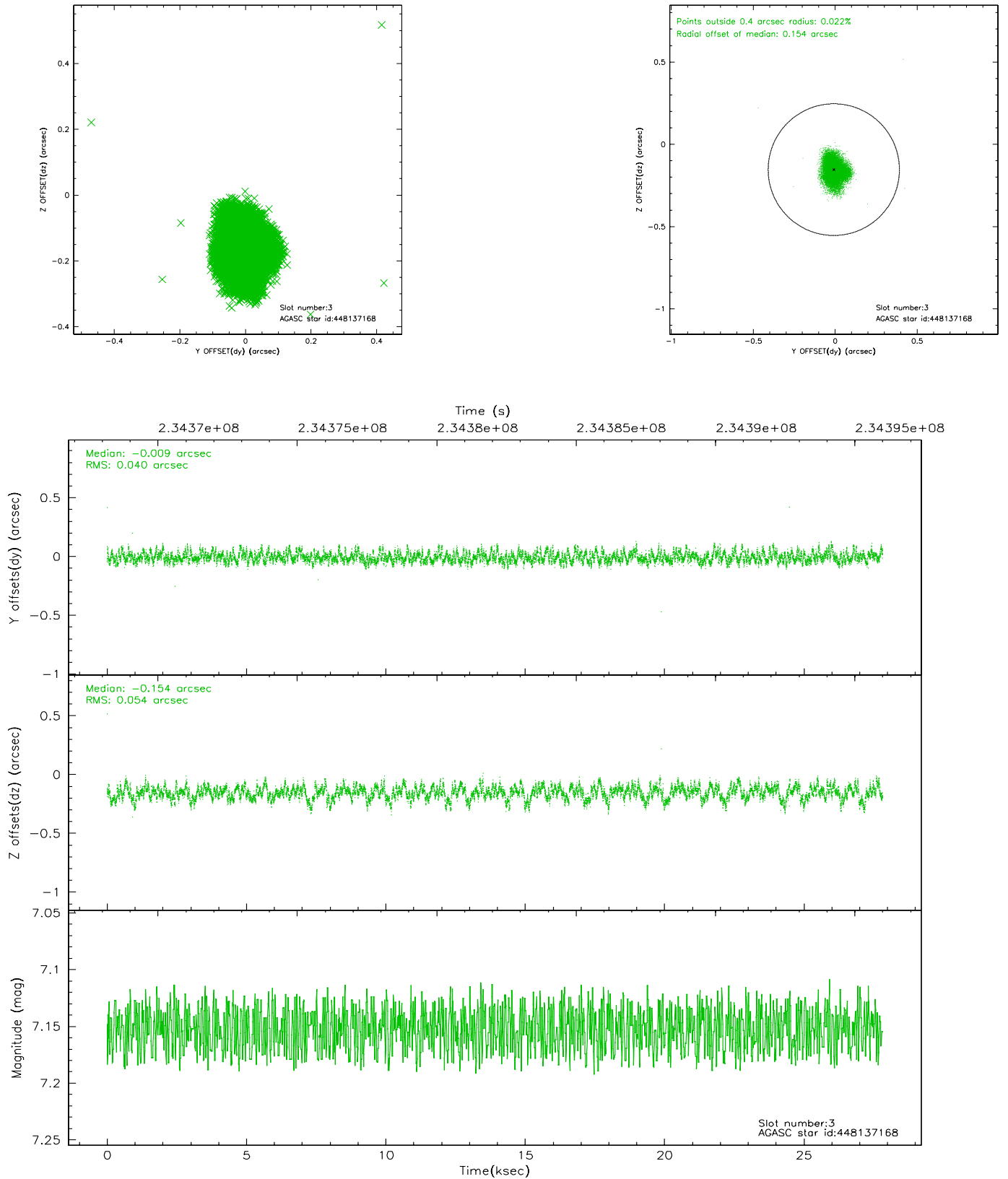


Slot Statistics

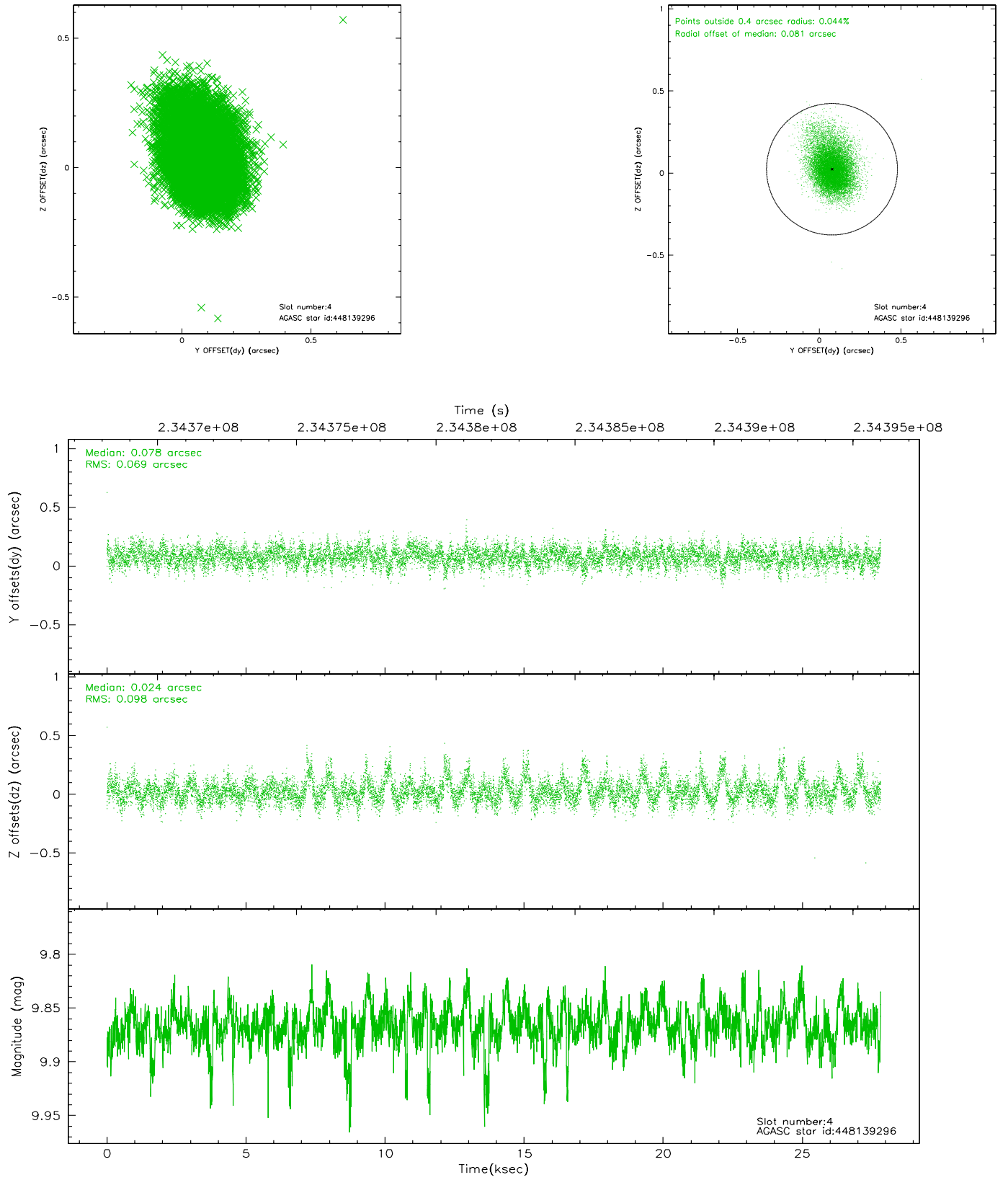
slot	status	id	mag	n_pts	med_dy	med_dz	dr1	dr2	ra	dec	mean_y	mean_z
0	FID	ACIS-I-2	7.14	6785	-0.048	-0.065	0.016	0.033	0.000000	0.000000	-759.46	-840.38
1	FID	ACIS-I-4	7.16	6786	0.068	0.051	0.012	0.022	0.000000	0.000000	2154.67	1065.86
2	FID	ACIS-I-5	7.22	6786	-0.122	0.082	0.017	0.031	0.000000	0.000000	-1813.25	1063.84
3	GUIDE	448137168	7.15	13574	-0.009	-0.154	0.072	0.113	128.722836	48.533723	-399.79	-1622.73
4	GUIDE	448139296	9.87	13563	0.078	0.024	0.121	0.220	129.077095	48.192176	962.50	-1010.95
5	GUIDE	448142144	8.42	13575	-0.082	0.050	0.063	0.106	129.164615	48.332904	501.13	-714.47
6	GUIDE	448145968	9.89	13559	0.071	0.047	0.133	0.220	130.277247	48.257599	1221.68	1865.94
7	GUIDE	448145880	9.67	13473	-0.057	0.030	0.097	0.158	129.329974	49.152000	-2332.37	191.21

2.4 Star Slots

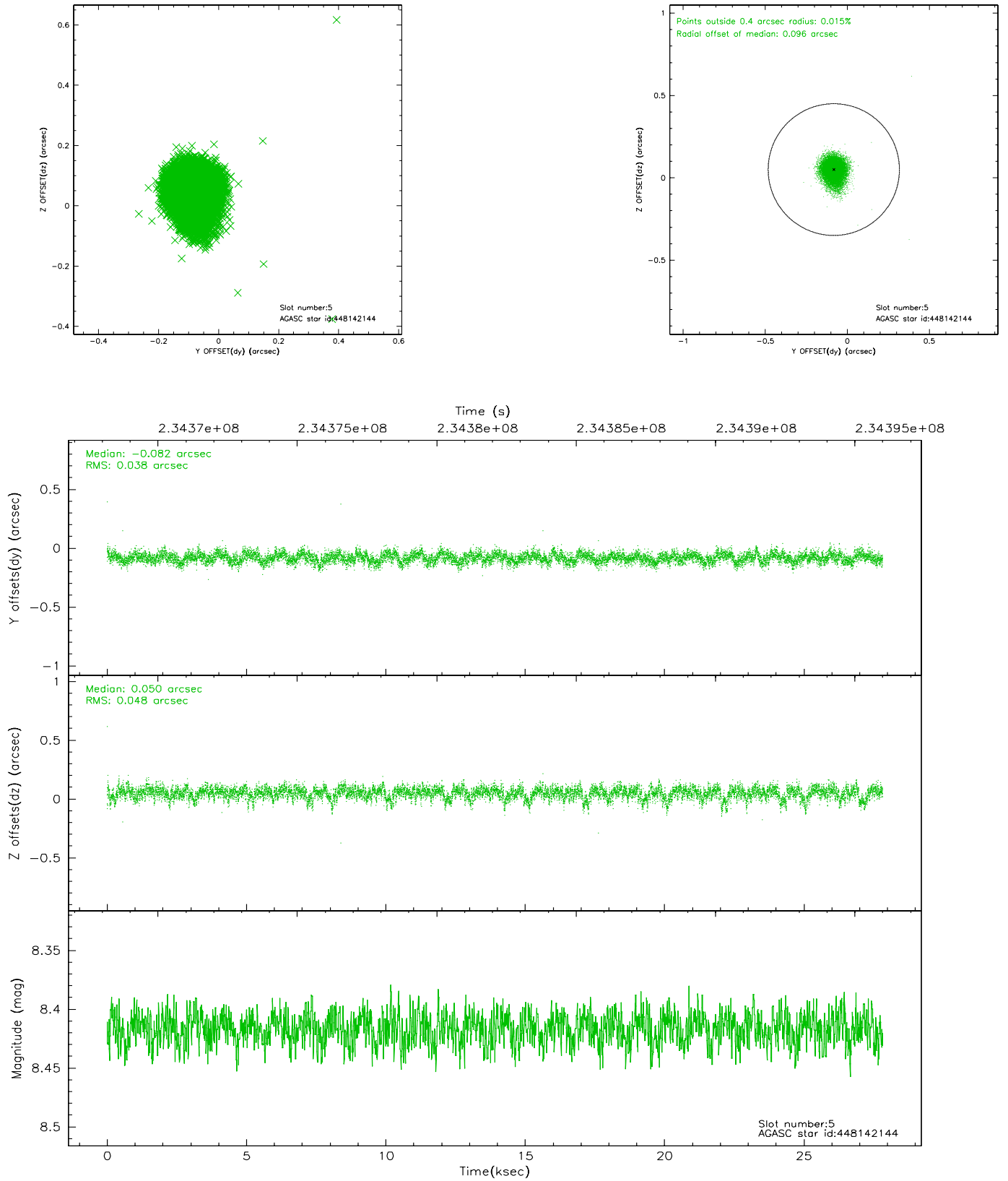
2.4.1 Slot 3



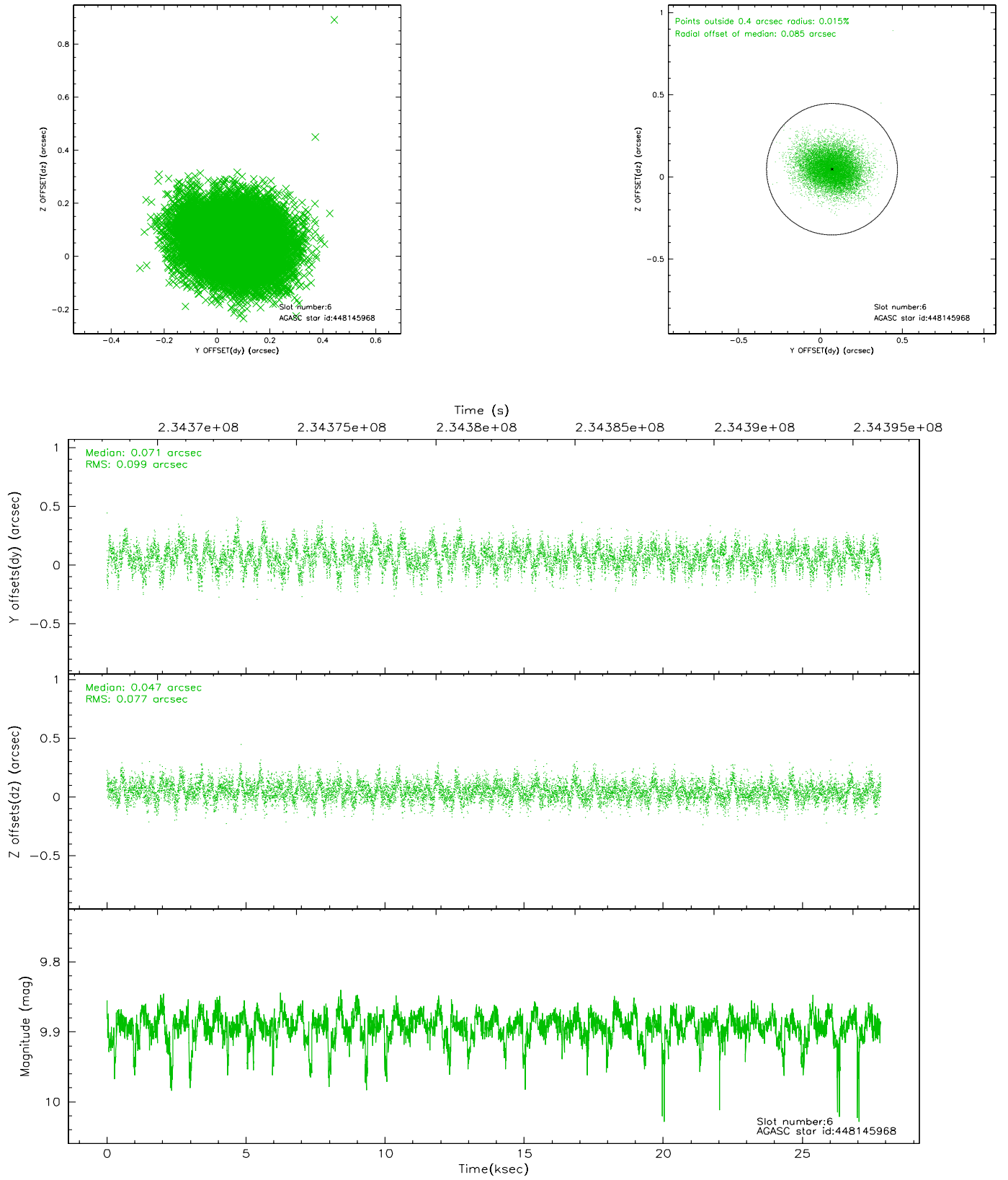
2.4.2 Slot 4



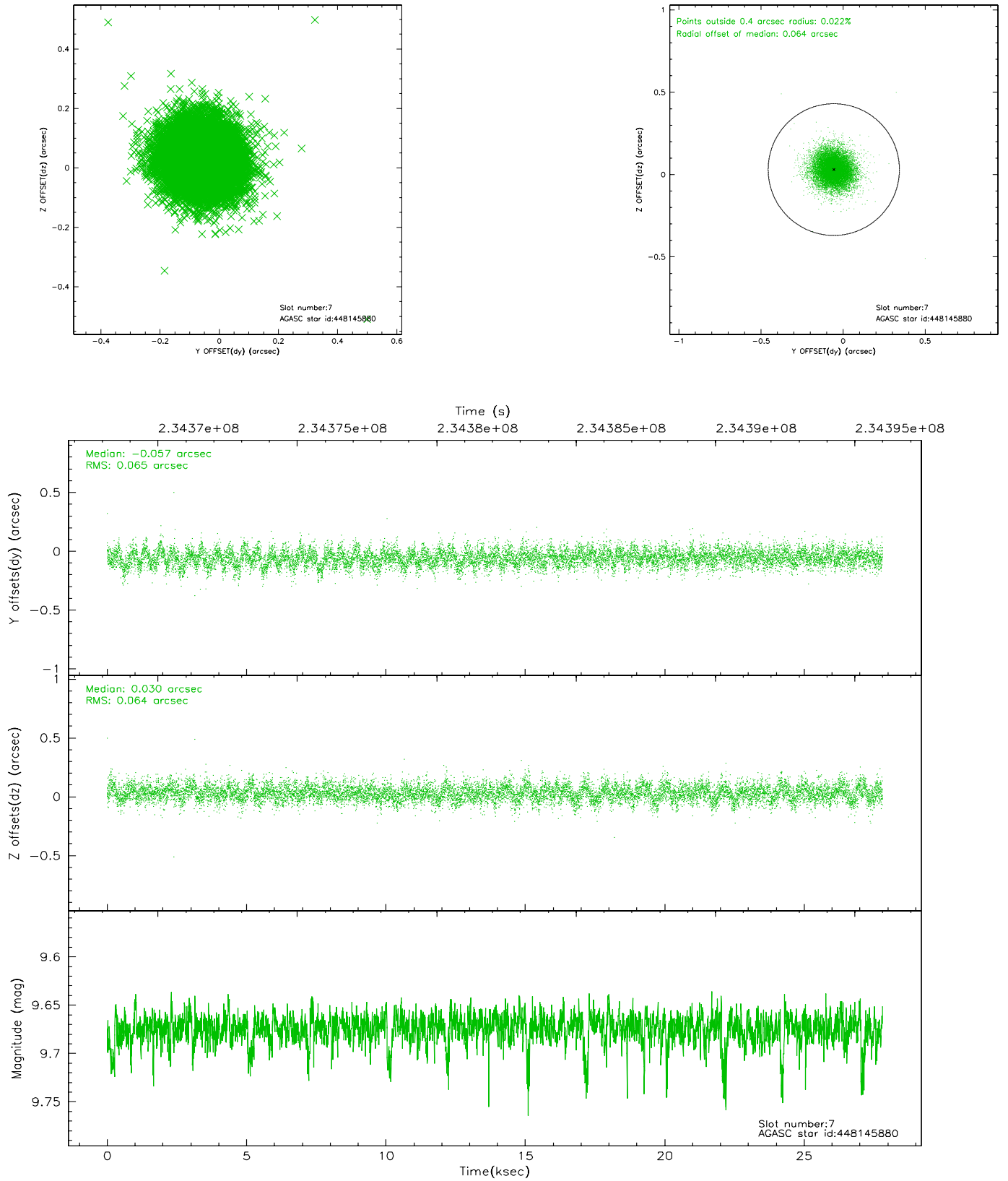
2.4.3 Slot 5



2.4.4 Slot 6

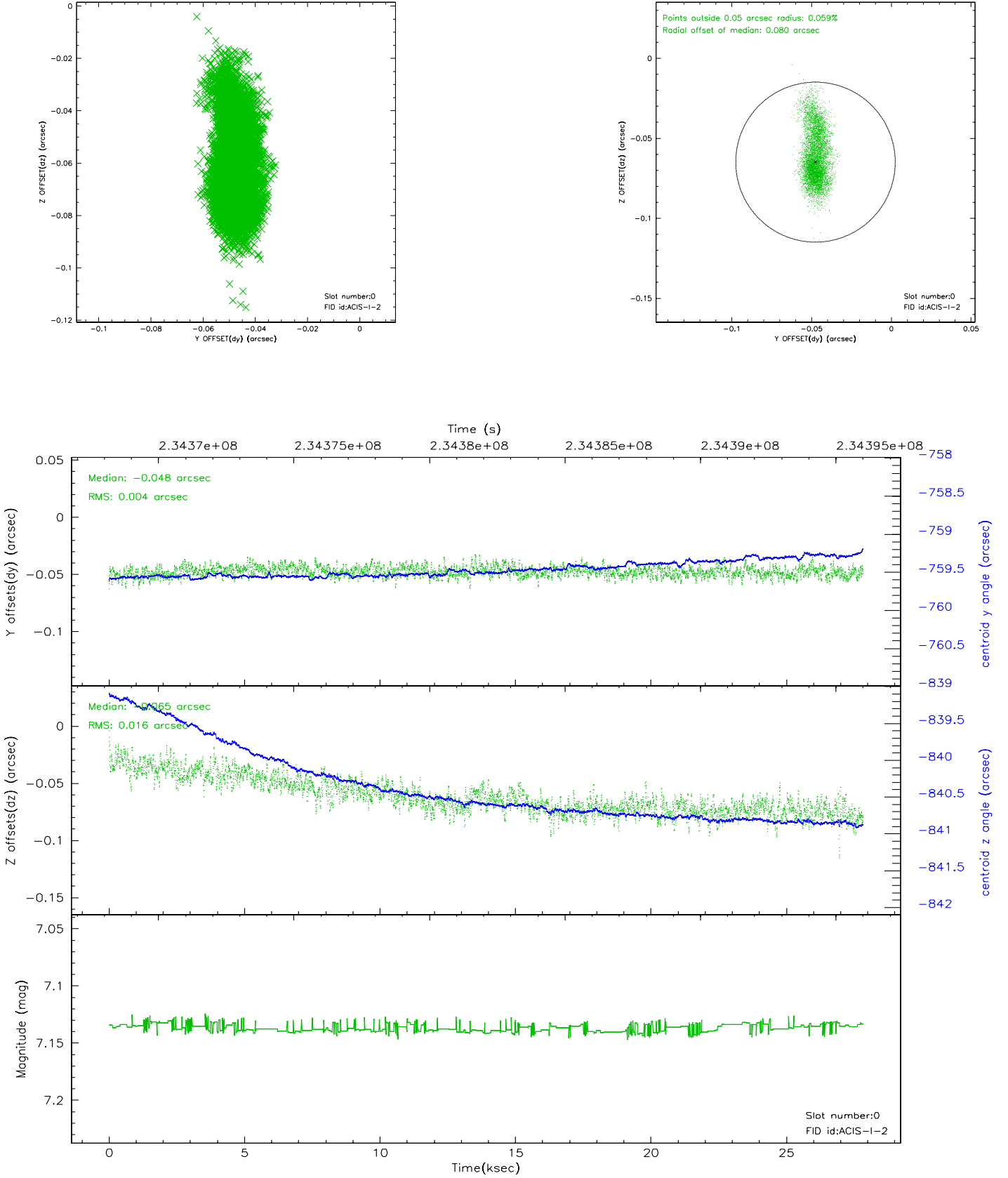


2.4.5 Slot 7

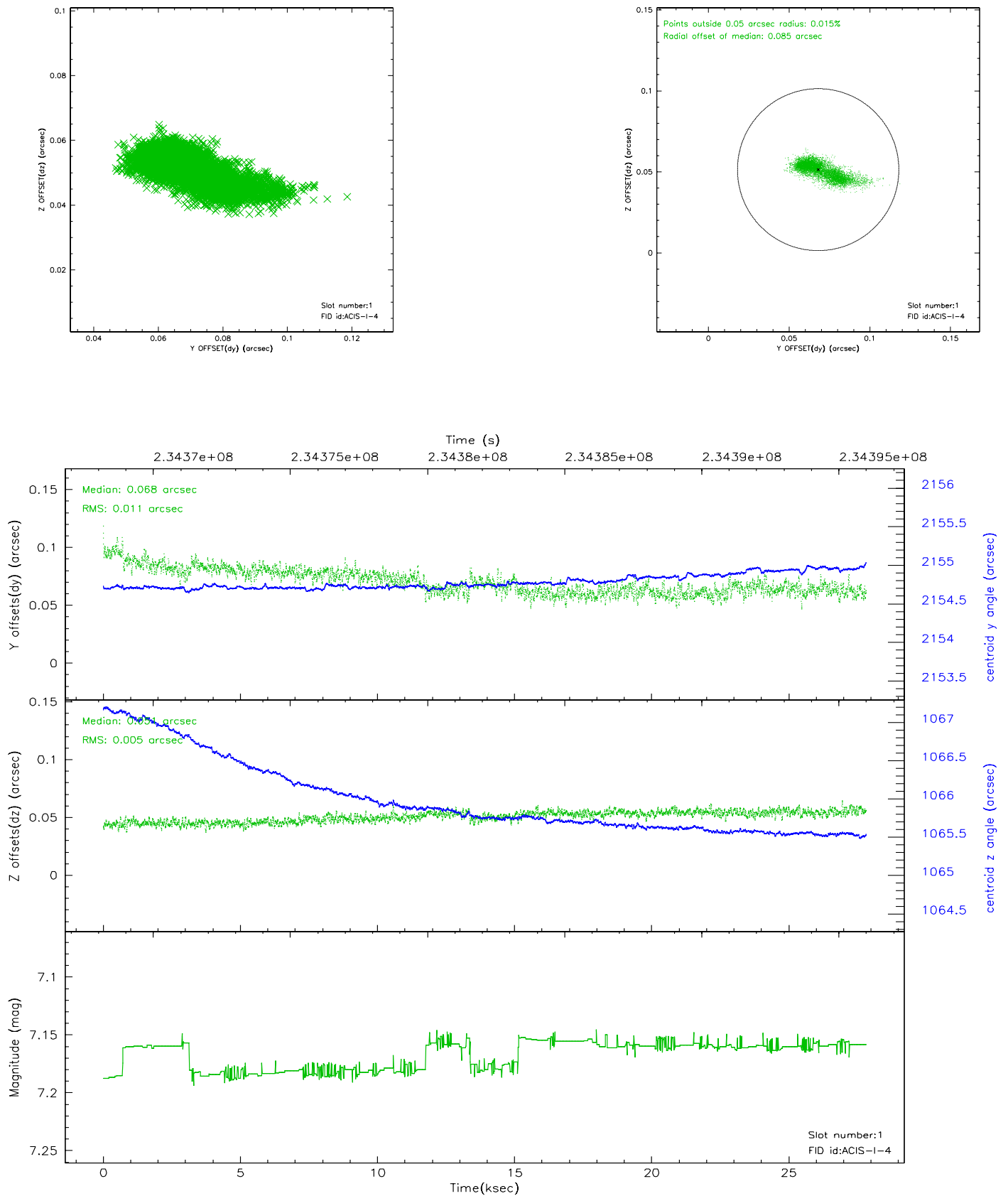


2.5 FID Slots

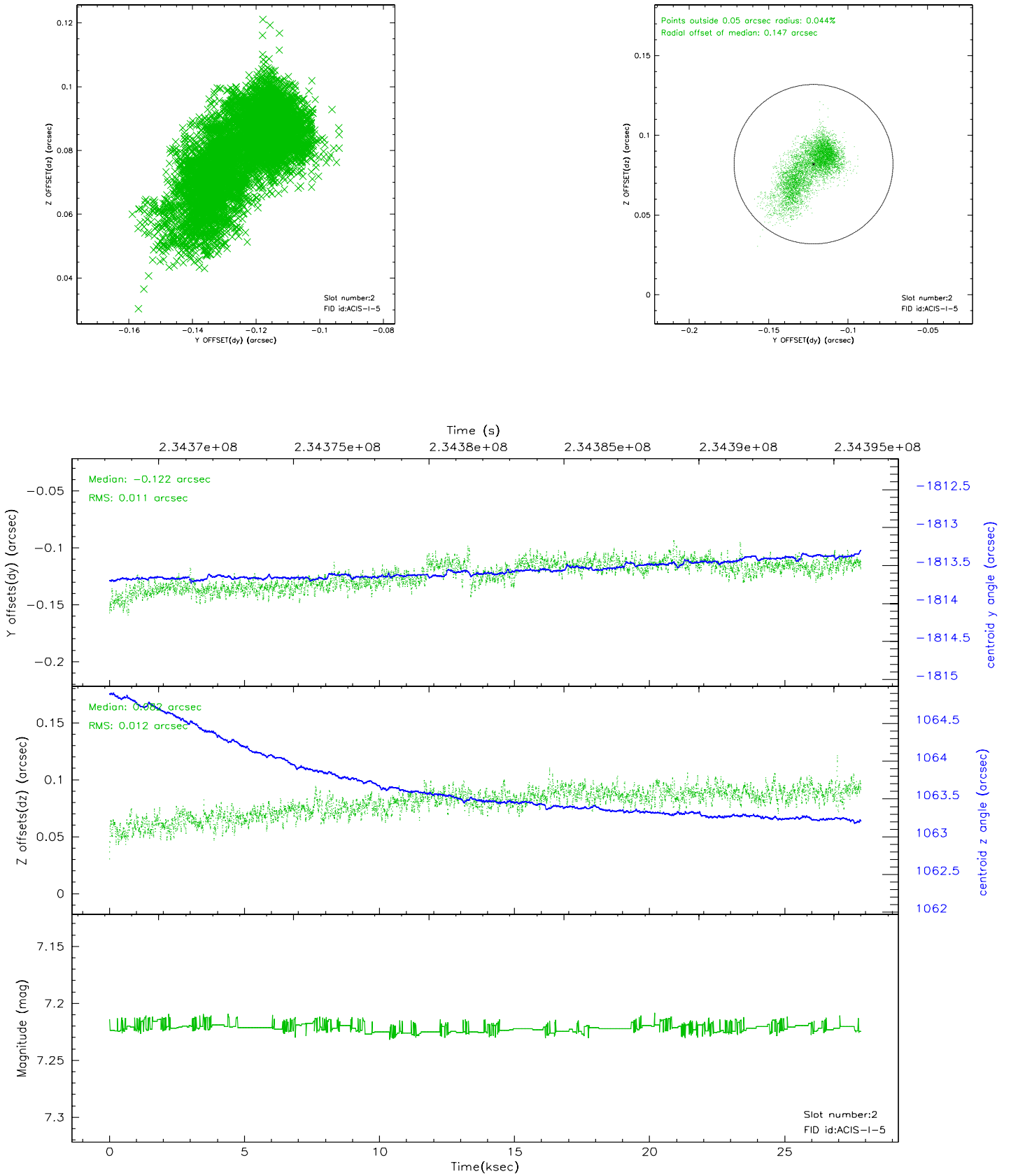
2.5.1 Slot 0



2.5.2 Slot 1

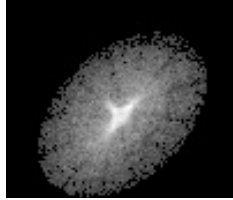


2.5.3 Slot 2



3 Point Sources

10.63 arcmin



A Summary

A.1 Status

V&V Scientist	Jen Lauer
V&V Date (YYYY-MM-DD)	2006.03.09
V&V Edition	1
V&V Disposition and Status	OK
V&V Charge Time	27.82715

A.2 Comments

Source offset to reduce pileup.