

V&V Reference Report

L2 ASCDS Version : 8.5.1.1

Observation 5435 - L2 Version 3
Chandra X-Ray Center

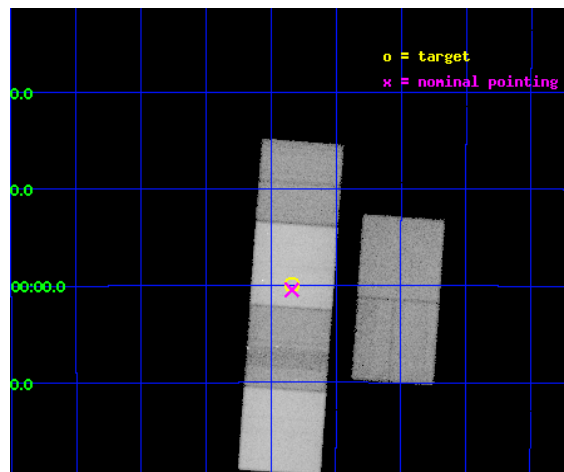
L2 Processing Date : Dec 26 2012

Contents

1	Front	2
2	OBI	3
2.1	OBI	3
2.1.1	Images	3
2.1.2	Bias	3
2.1.3	Parameters	4
2.1.4	Events	4
2.2	Compared Parameters	5
2.3	Aspect	6
2.4	Star Slots	9
2.4.1	Slot 3	9
2.4.2	Slot 4	10
2.4.3	Slot 5	11
2.4.4	Slot 6	12
2.4.5	Slot 7	13
2.5	FID Slots	14
2.5.1	Slot 0	14
2.5.2	Slot 1	15
2.5.3	Slot 2	16
A	Summary	17
A.1	Status	17
A.2	Comments	17

1 Front

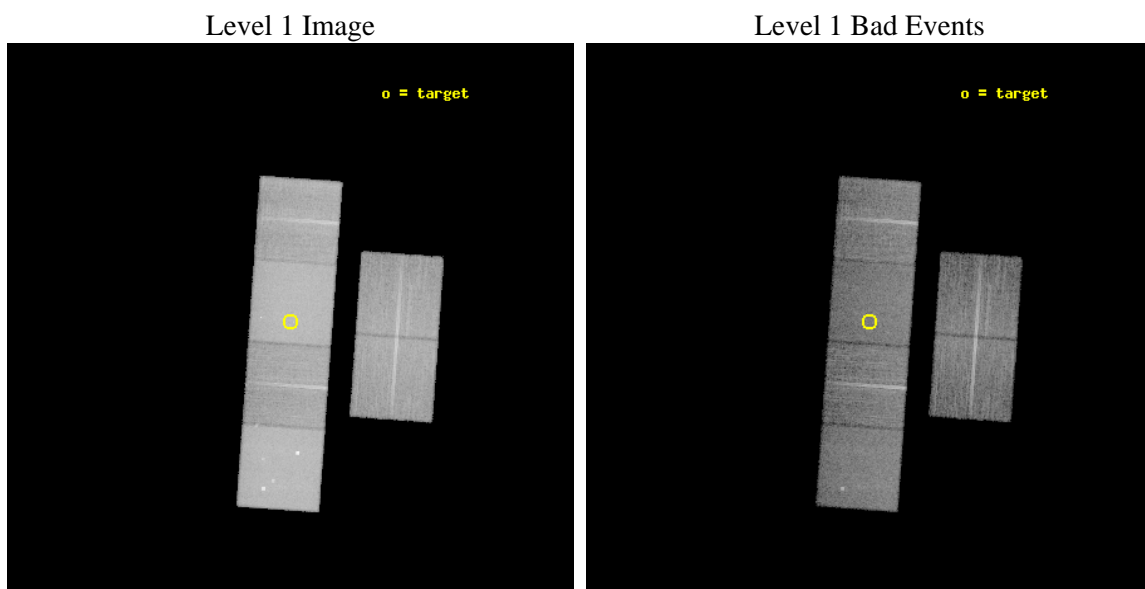
seq_num	300151	Sequence number
obs_id	5435	Observation id
title	A Uniform Study of Globular Cluster X-ray Sources: the Keys to Cluster Dynamical Evolution	Proposal title
observer	Prof. Walter Lewin	Principal investigator
object	NGC 6544	Source name
dtcycle	0	
cycle	P	events from which exps? Prim/Second/Both
ra_targ	271.835833	Observer's specified target RA [deg]
dec_targ	-24.9975	Observer's specified target Dec [deg]
ra_nom	271.83470665224	Nominal RA [deg]
dec_nom	-25.007157478812	Nominal Dec [deg]
roll_nom	274.09905221622	Nominal Roll [deg]
revision	3	Processing version of data
ontime	16486.399938583	Sum of GTIs [s]
livetime	16277.639215643	Livetime [s]
ontime2	16483.158948362	Sum of GTIs [s]
ontime3	16486.399938583	Sum of GTIs [s]
ontime5	16486.399938583	Sum of GTIs [s]
ontime6	16486.399938583	Sum of GTIs [s]
ontime7	16486.399938583	Sum of GTIs [s]
ontime8	16486.399938583	Sum of GTIs [s]
l2events	479577	Number of level 2 events



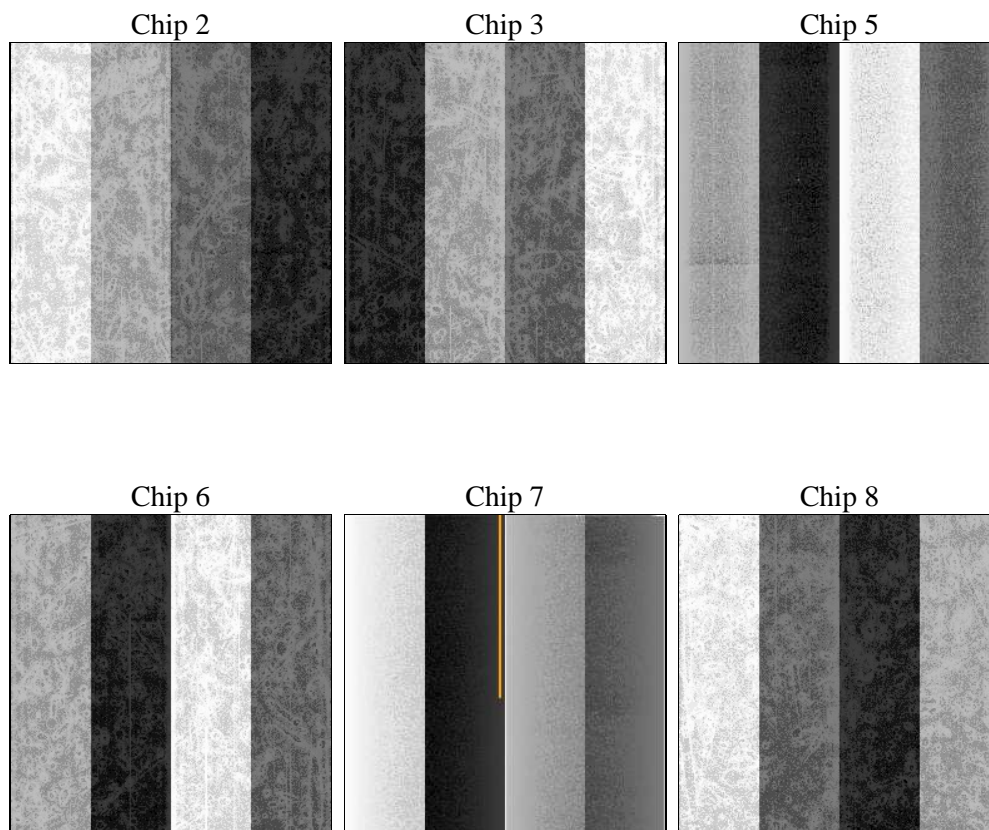
2 OBI

2.1 OBI

2.1.1 Images



2.1.2 Bias



2.1.3 Parameters

obi_num	0	Obi number	sched_exp_time	16309.472000	[s] Scheduled observation exposure time
ascdsver	8.5.1.1	Processing system revision	ontime	16486.399938583	Sum of GTIs [s]
caldsver	4.5.5	 	ontime2	16483.158948362	Sum of GTIs [s]
date	2012-12-26T13:27:46	Date and time of file creation	ontime3	16486.399938583	Sum of GTIs [s]
revision	3	Processing version of data	ontime5	16486.399938583	Sum of GTIs [s]
			ontime6	16486.399938583	Sum of GTIs [s]
			ontime7	16486.399938583	Sum of GTIs [s]
			ontime8	16486.399938583	Sum of GTIs [s]
			l1events	1216424	Number of level 1 events

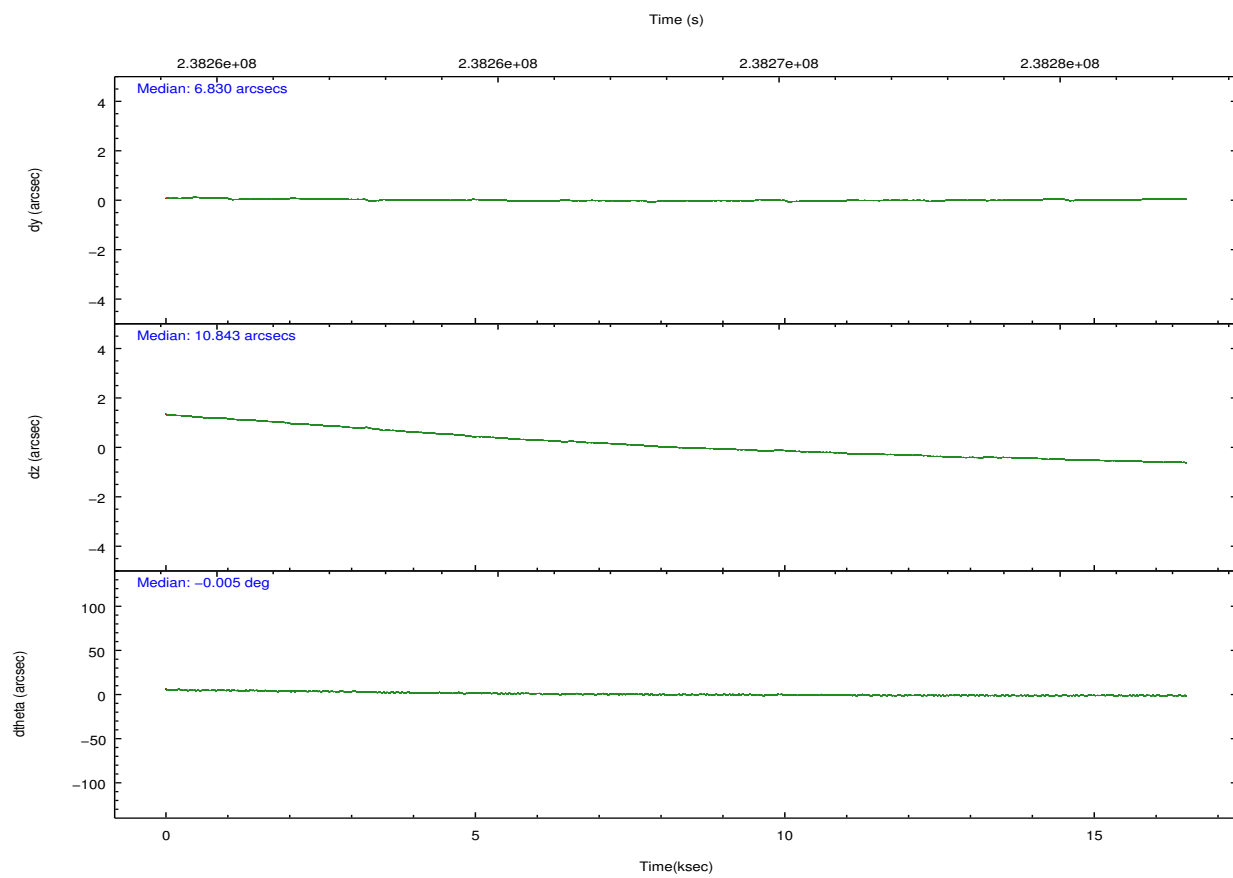
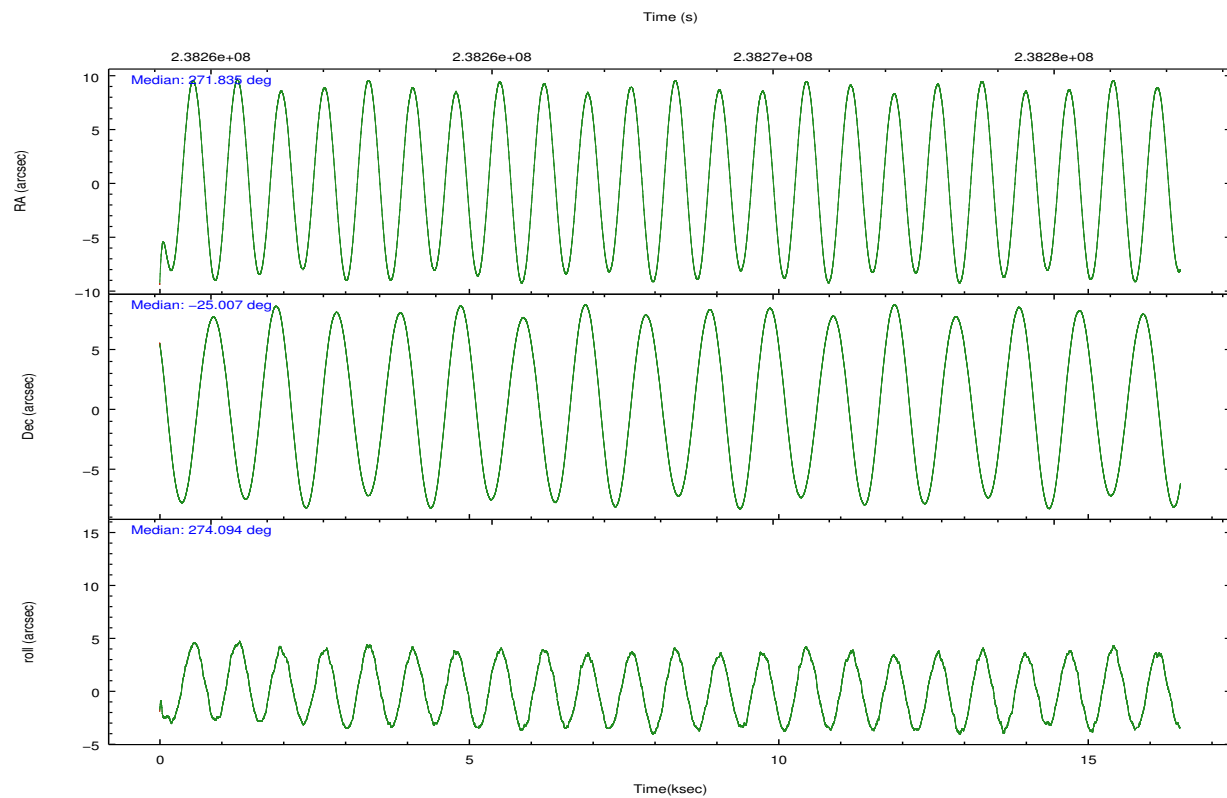
2.1.4 Events

	ccd 2	ccd 3	ccd 5	ccd 6	ccd 7	ccd 8		ccd 2	ccd 3	ccd 5	ccd 6	ccd 7	ccd 8
level 1 events	156326	153374	278661	166173	265069	196821	grade 0 events	28040	28088	21764	32679	15559	38571
rejected events	115121	111795	114884	116682	106009	127731		17%	18%	7%	19%	5%	19%
rejected %	73%	72%	41%	70%	39%	64%	grade 1 events	167	189	325	167	191	224
								0%	0%	0%	0%	0%	0%
							grade 2 events	5988	5888	47955	8306	28746	11891
								3%	3%	17%	4%	10%	6%
							grade 3 events	2087	2211	7891	2375	12266	4741
								1%	1%	2%	1%	4%	2%
							grade 4 events	2084	2235	7583	2218	12147	4430
								1%	1%	2%	1%	4%	2%
							grade 5 events	5230	5729	15488	6050	16876	8022
								3%	3%	5%	3%	6%	4%
							grade 6 events	3305	3417	79929	4212	91454	10031
								2%	2%	28%	2%	34%	5%
							grade 7 events	109425	105617	97726	110166	87830	118911
								69%	68%	35%	66%	33%	60%

2.2 Compared Parameters

Parameter	Planned	Actual	Parameter	Planned	Actual
Instrument	ACIS	ACIS	Obspar format version number	7	7
Detector	ACIS-235678	ACIS-235678	Obspar file type	PREDICTED	ACTUAL
Grating	NONE	NONE	Obspar update status	NONE	UPDATED
Data mode	FAINT	FAINT	Number of optional ACIS chips dropped	0	0
Observation mode	POINTING	POINTING	On-chip summing requested	N	N
[deg] Pointing RA	271.817537	271.8347066522398	Subarray requested	NONE	NONE
[deg] Pointing Dec	-24.984779	-25.00715747881194	Alternating exposures requested	N	N
[deg] Pointing Roll	273.935167	274.0990522162197	[s] Primary exposure time	0.000000	3.2
[mm] SIM focus pos	-0.684267	-0.6828225247311905			
[mm] SIM defocus	0	0.001444936568705701			
[mm] SIM translation stage pos	-190.132523	-190.1425803651734			
[mm] SIM translation stage offset	0	0.01005778216563158			
[s] Observation start time (MET)	238260101.184000	238258861.86205			
Observation start date	2005-07-20T15:20:37	2005-07-20T15:01:01			
[s] Observation end time (MET)	238276410.184000	238276638.95036			
Observation end date	2005-07-20T19:52:26	2005-07-20T19:57:18			
Read mode	TIMED	TIMED			

2.3 Aspect

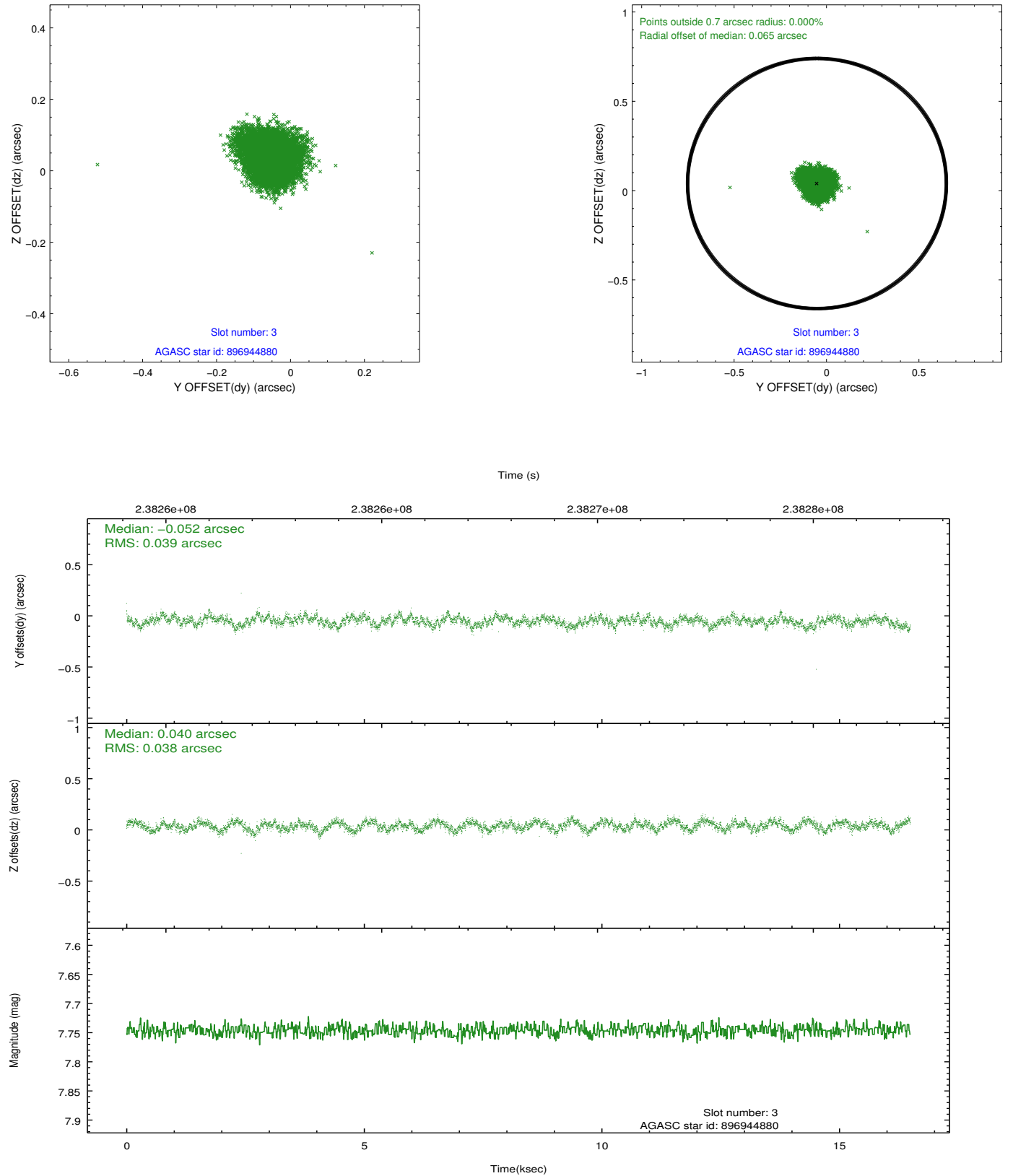


Slot Statistics

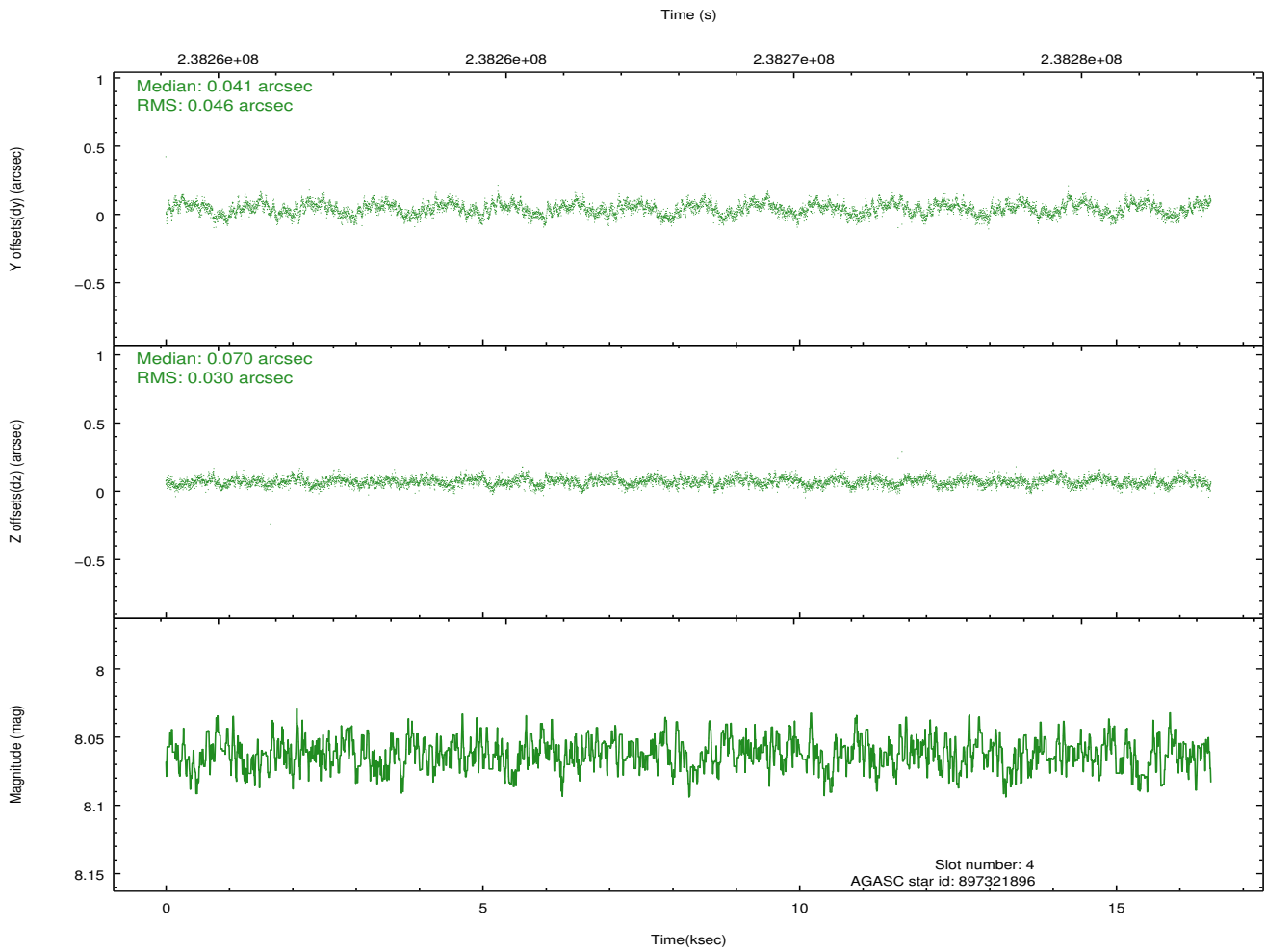
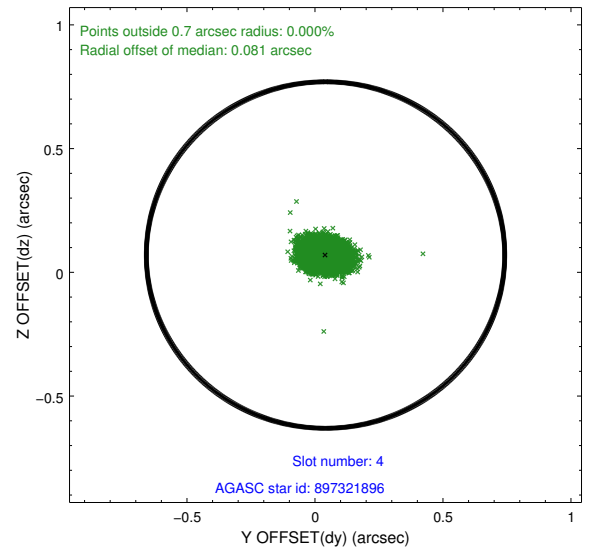
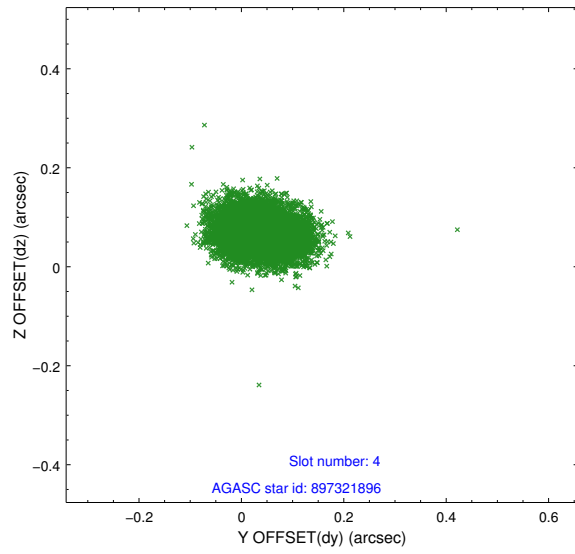
slot	status	id	mag	n_pts	med_dy	med_dz	dr1	dr2	ra	dec	mean_y	mean_z
0	FID	ACIS-S-1	7.19	4024	0.001	-0.068	0.026	0.035	0.000000	0.000000	936.45	-1727.91
1	FID	ACIS-S-4	7.21	4024	0.058	0.049	0.016	0.023	0.000000	0.000000	2154.05	176.09
2	FID	ACIS-S-5	7.23	4023	-0.088	0.029	0.013	0.021	0.000000	0.000000	-1812.18	169.96
3	GUIDE	896944880	7.75	8046	-0.052	0.040	0.059	0.092	272.225160	-24.357987	-2157.50	1488.48
4	GUIDE	897321896	8.06	8046	0.041	0.070	0.058	0.095	271.639414	-25.476837	1728.14	-698.30
5	GUIDE	897327936	7.20	8046	-0.172	-0.011	0.051	0.085	271.293962	-24.398569	-2219.62	-1568.10
6	GUIDE	897328728	7.32	8046	0.156	-0.053	0.066	0.110	271.202031	-25.605697	2097.75	-2147.19
7	GUIDE	897465768	7.84	8041	0.030	-0.040	0.050	0.084	272.486247	-25.285827	1236.25	2096.83

2.4 Star Slots

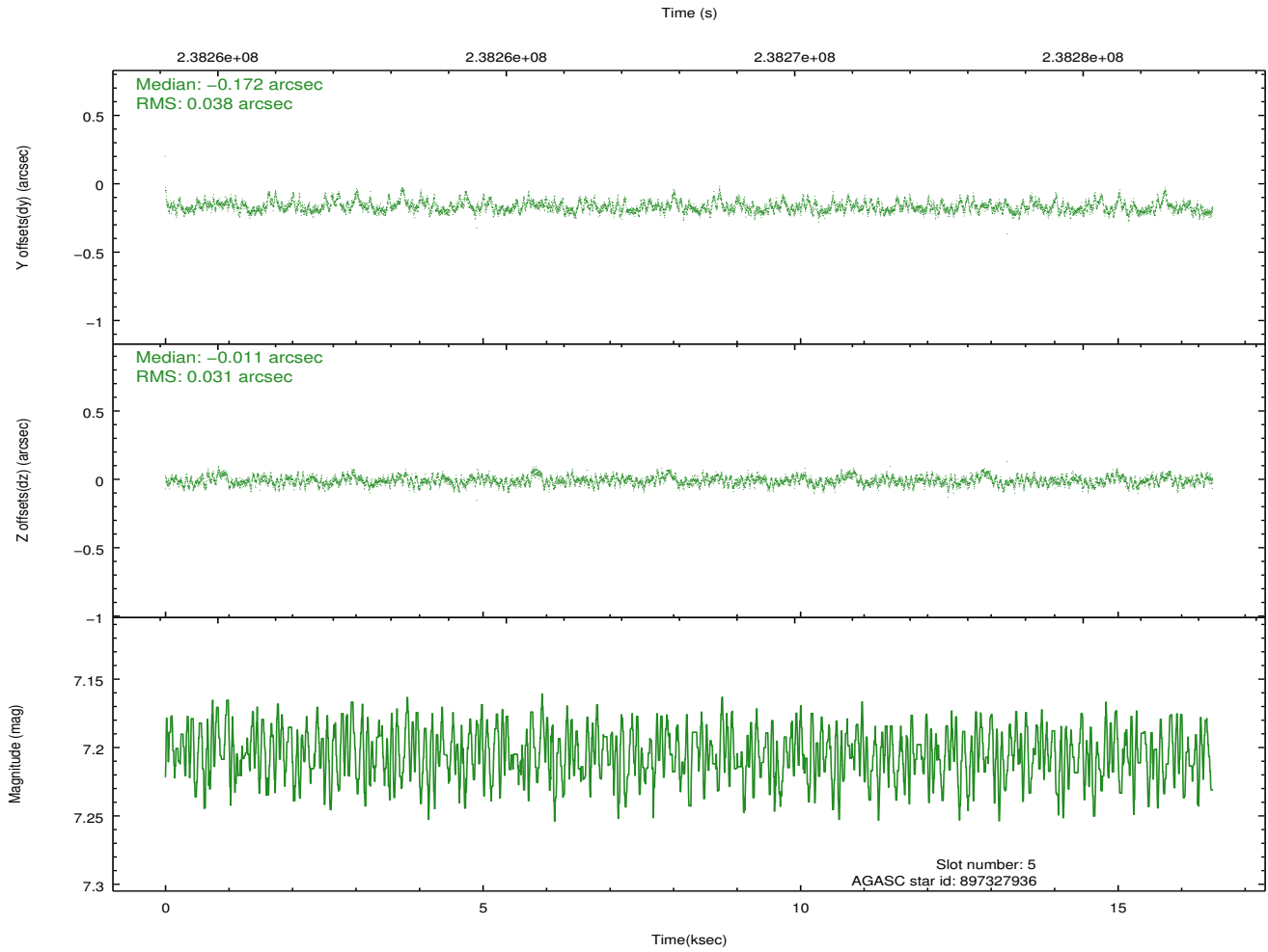
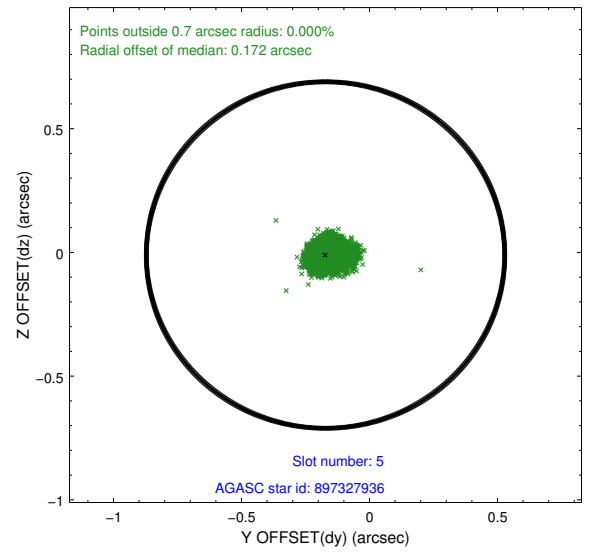
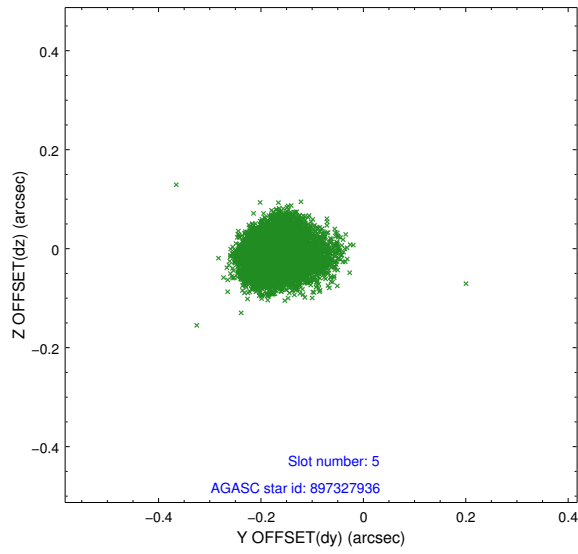
2.4.1 Slot 3



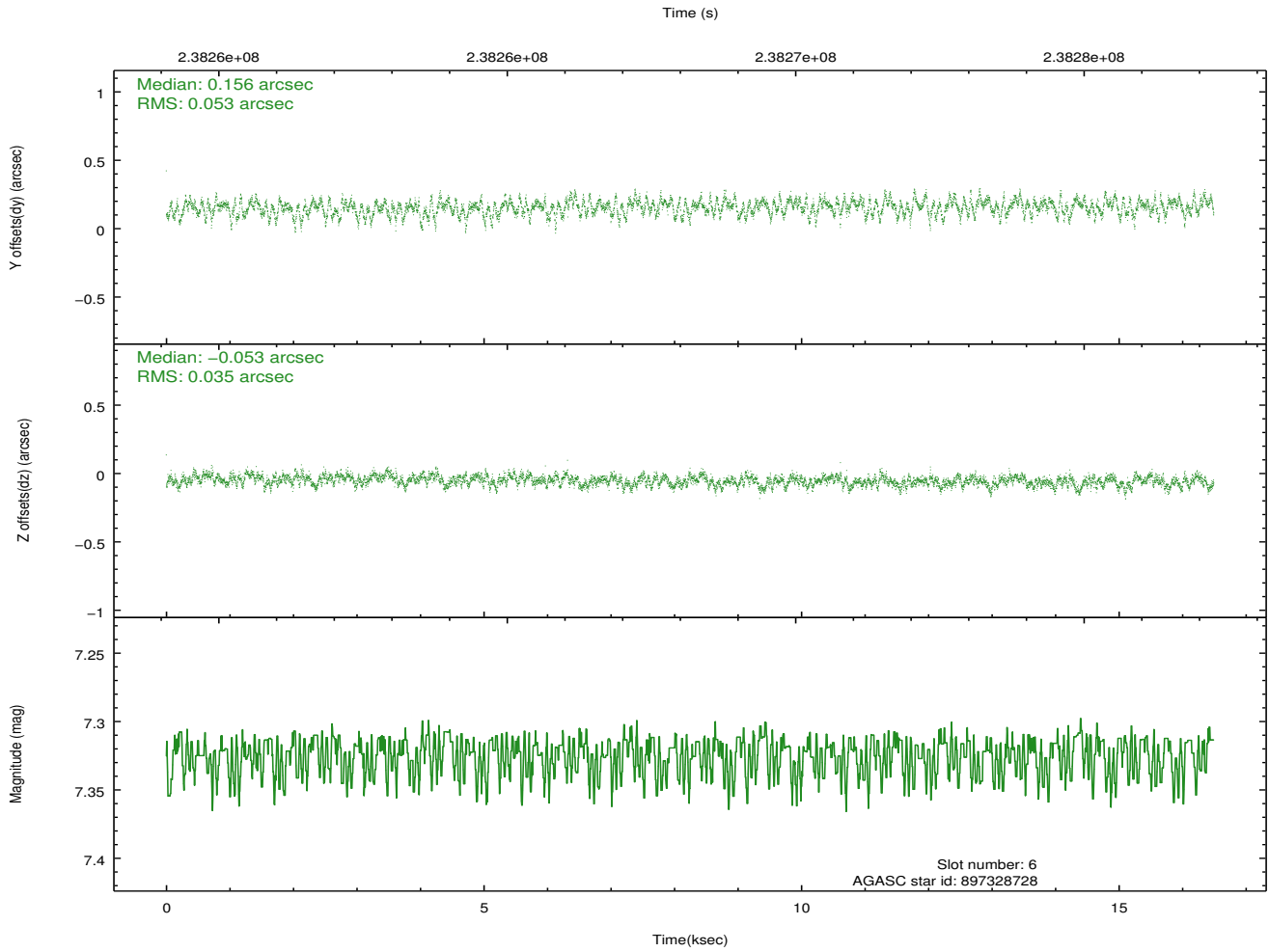
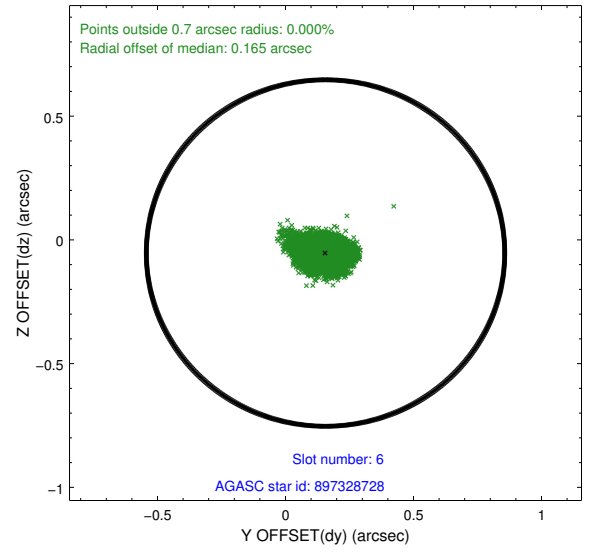
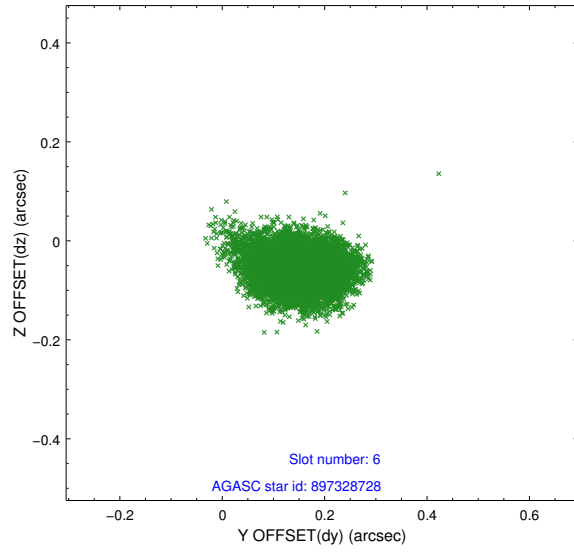
2.4.2 Slot 4



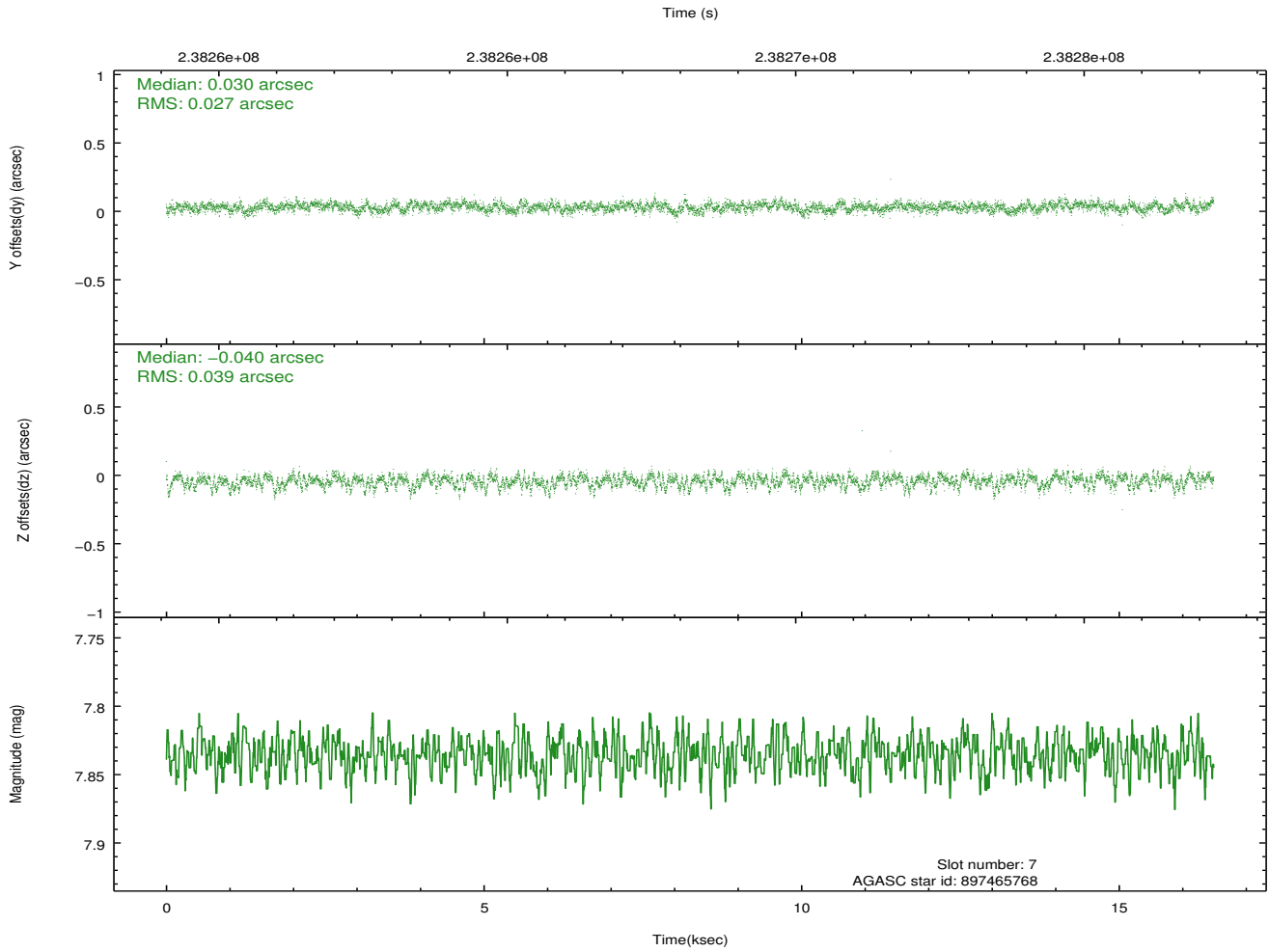
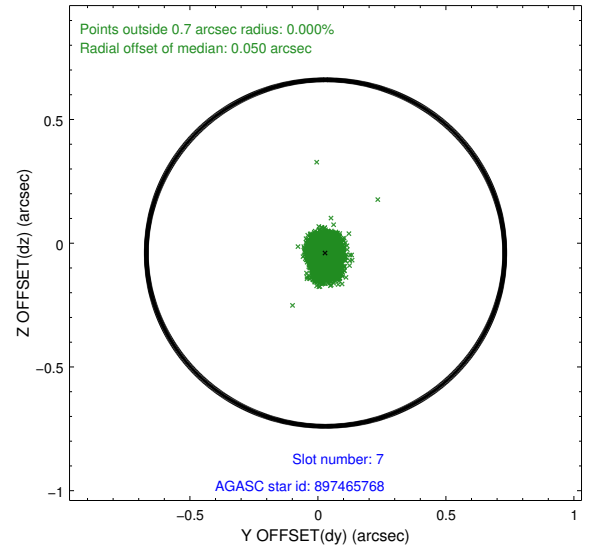
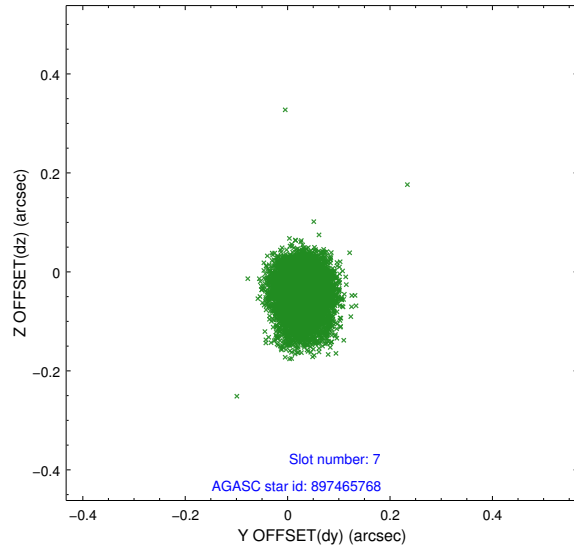
2.4.3 Slot 5



2.4.4 Slot 6

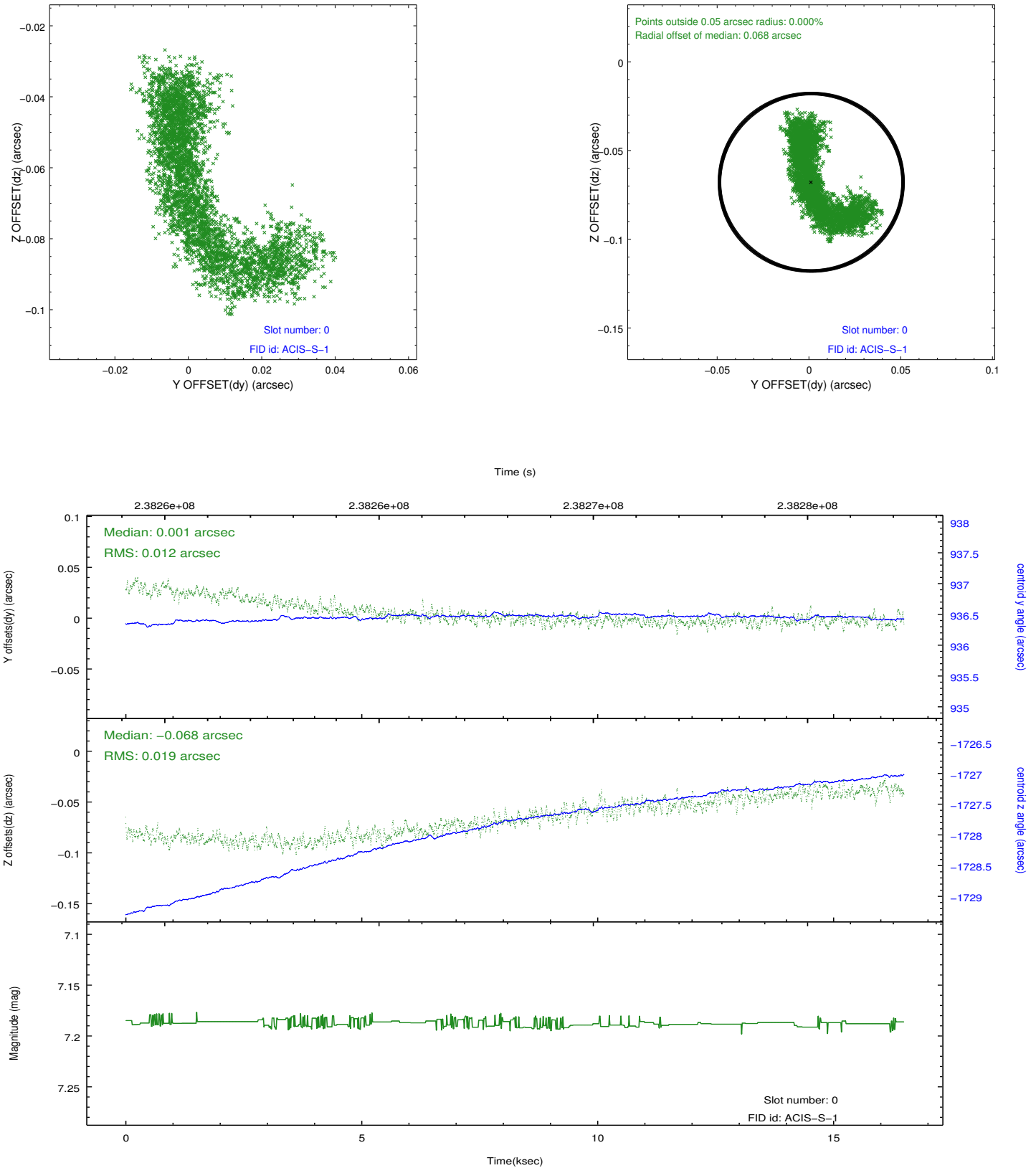


2.4.5 Slot 7

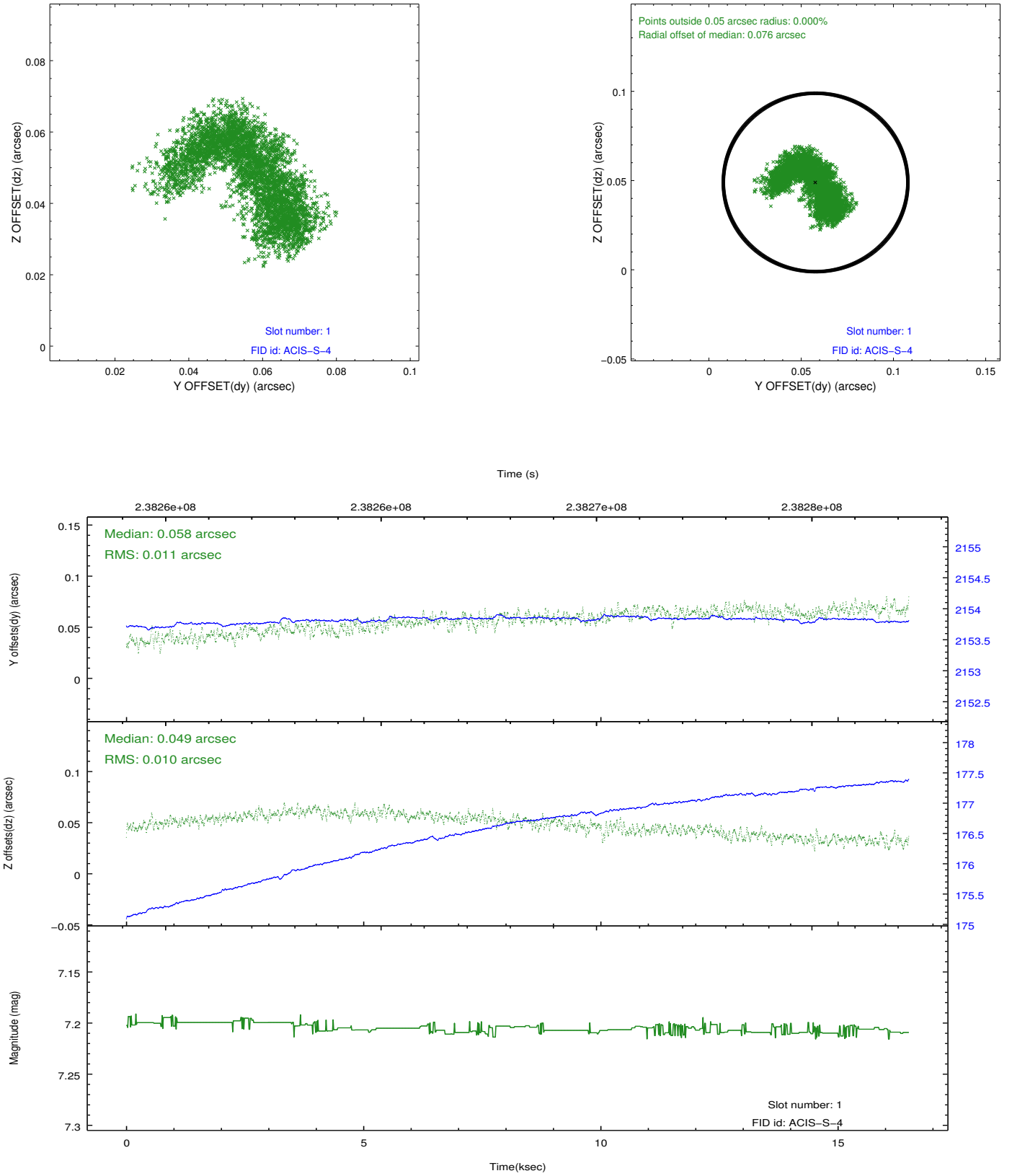


2.5 FID Slots

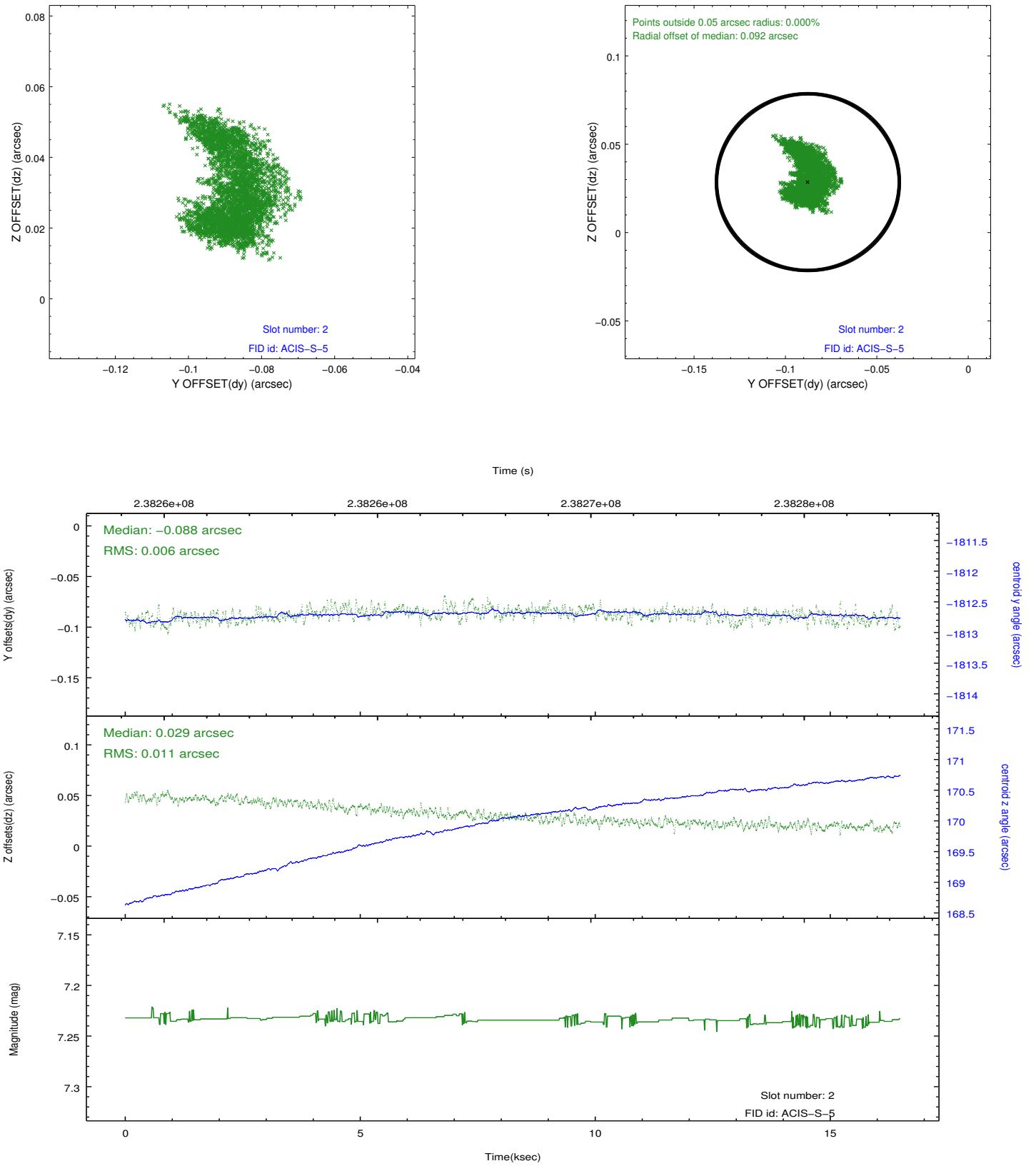
2.5.1 Slot 0



2.5.2 Slot 1



2.5.3 Slot 2



A Summary

A.1 Status

V&V Scientist	Jen Lauer
V&V Date (YYYY-MM-DD)	2013.01.23
V&V Edition	1
V&V Disposition and Status	OK
V&V Charge Time	16.48639

A.2 Comments

Joint Proposal: HST