

V&V Reference Report

L2 ASCDS Version : 7.6.7.1

Observation 6373 - L2 Version 3
Chandra X-Ray Center

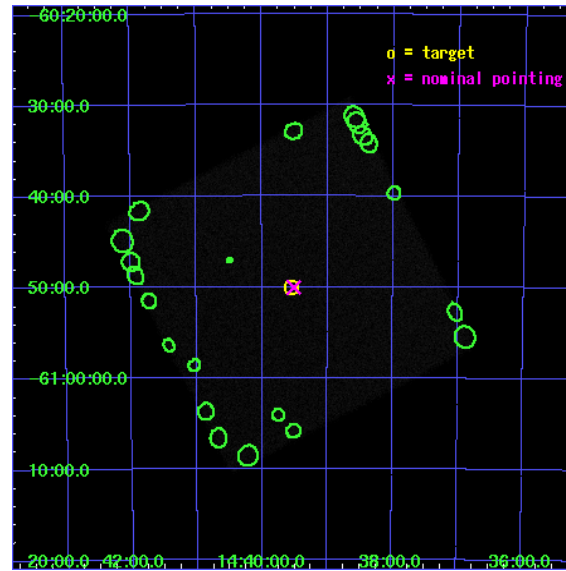
L2 Processing Date : Nov 24 2007

Contents

1	Front	2
2	OBI	3
2.1	OBI	3
2.1.1	Images	3
2.1.2	Parameters	4
2.1.3	Events	4
2.2	Compared Parameters	5
2.3	Aspect	6
2.4	Star Slots	9
2.4.1	Slot 3	9
2.4.2	Slot 4	10
2.4.3	Slot 5	11
2.4.4	Slot 6	12
2.4.5	Slot 7	13
2.5	FID Slots	14
2.5.1	Slot 0	14
2.5.2	Slot 1	15
2.5.3	Slot 2	16
3	Point Sources	17
A	Summary	18
A.1	Status	18
A.2	Comments	18

1 Front

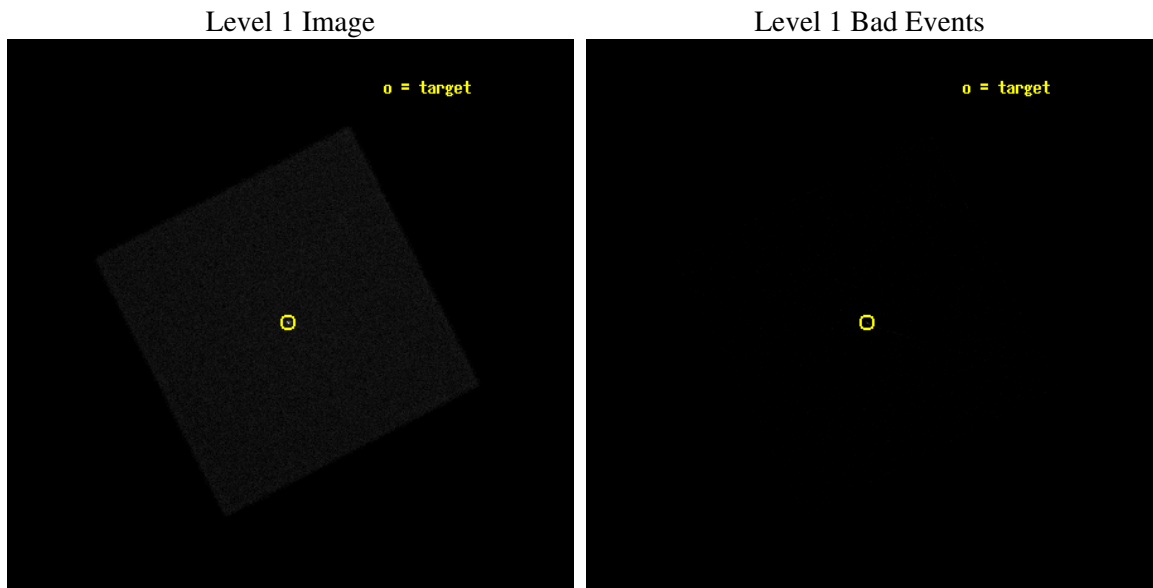
seq_num	200370
obs_id	6373
title	HRC Imaging of the 'Fainted' Primary of the Alpha Centauri System
observer	Dr. Thomas Ayres
object	Alpha Centauri
ra_targ	219.885833
dec_targ	-60.834889
ra_nom	219.87781273879
dec_nom	-60.834533903138
roll_nom	197.89230147051
revision	3
ontime	5187.7814890444
livetime	5148.7215699582
l2events	218735



2 OBI

2.1 OBI

2.1.1 Images



2.1.2 Parameters

obi_num	0
ascdsver	7.6.11.2
caldbver	3.4.1
date	2007-11-24T20:01:54
revision	3

sched_exp_time	5000.000000
ontime	5187.7814890444
l1events	399820

2.1.3 Events

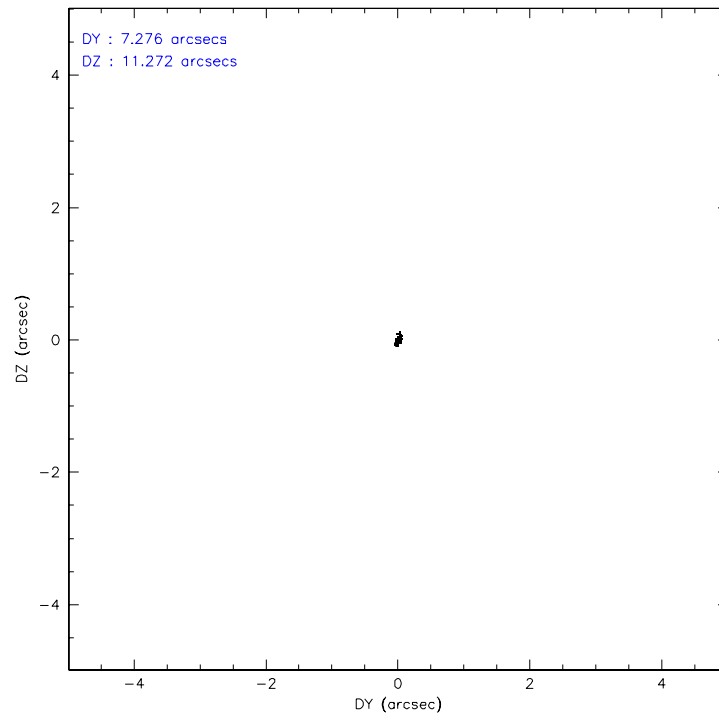
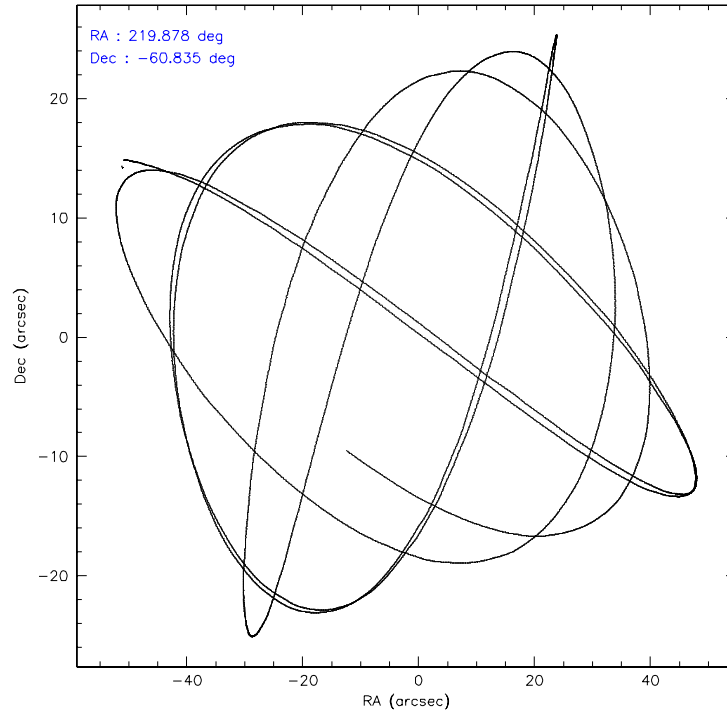
Level 1 Events

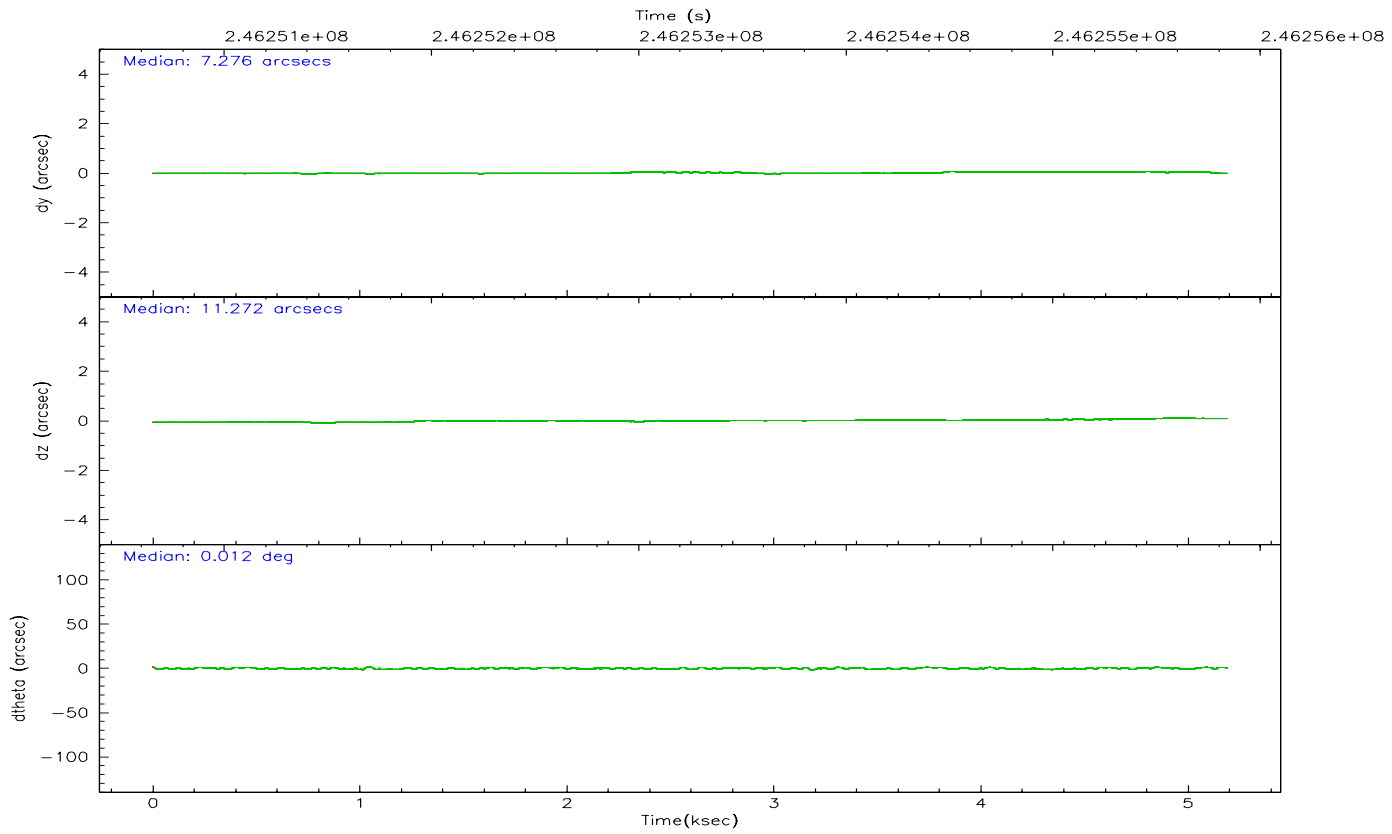
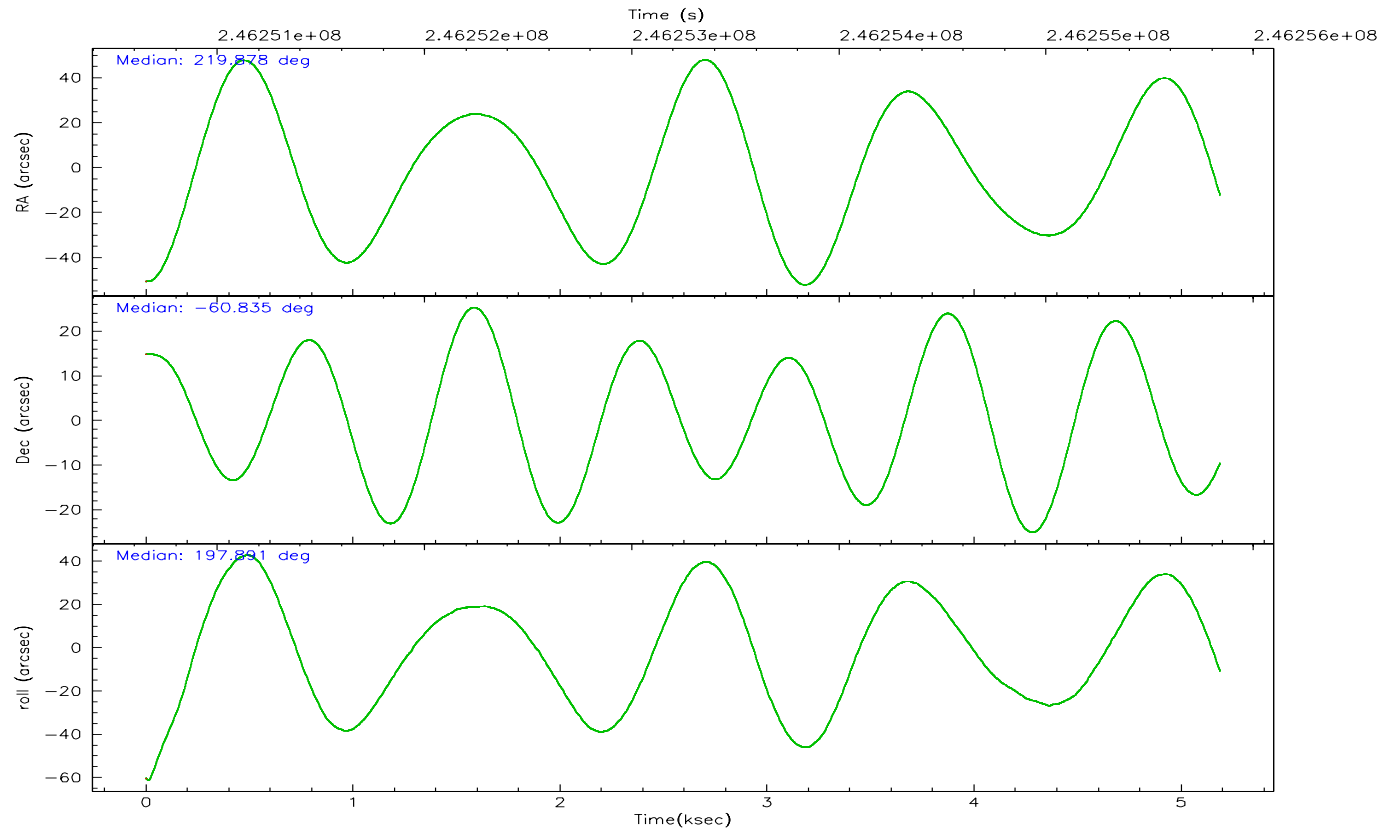
	segment 0
level 1 events	399820
rejected events	79576
rejected %	19%

2.2 Compared Parameters

Parameter	Planned	Actual	Parameter	Planned	Actual
Instrument	HRC	HRC	Obspar format version number	6	6
Detector	HRC-I	HRC-I	Obspar file type	PREDICTED	ACTUAL
Grating	NONE	NONE	Obspar update status	NONE	UPDATED
Data mode	OBSERVING	OBSERVING			
Observation mode	POINTING	POINTING			
Pointing RA	219.913615	219.8778127387864			
Pointing Dec	-60.814025	-60.83453390313807			
Pointing Roll	198.019083	197.8923014705085			
SIM focus pos (mm)	-1.040293	-1.038866356238299			
SIM defocus (mm)	0	0.001426264420575141			
SIM translation stage pos (mm)	126.985494	126.9829799899862			
SIM translation stage offset (mm)	0	0.002508901615314585			
Observation start time	246250845.184000	246249900.604			
Observation start date	2005-10-21T02:59:41	2005-10-21T02:45:00			
Observation end time	246255845.184000	246256403.7168			
Observation end date	2005-10-21T04:23:01	2005-10-21T04:33:23			

2.3 Aspect



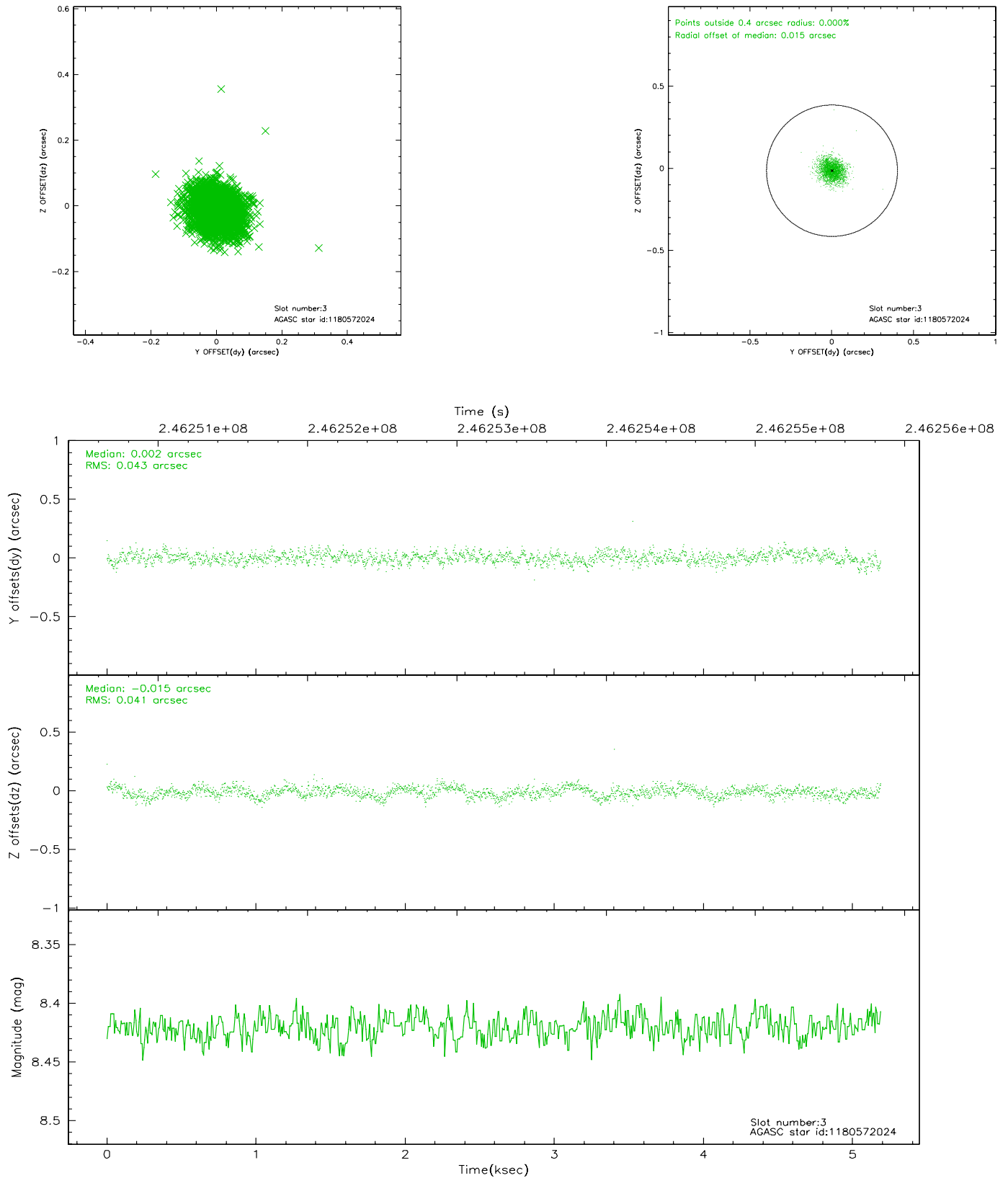


Slot Statistics

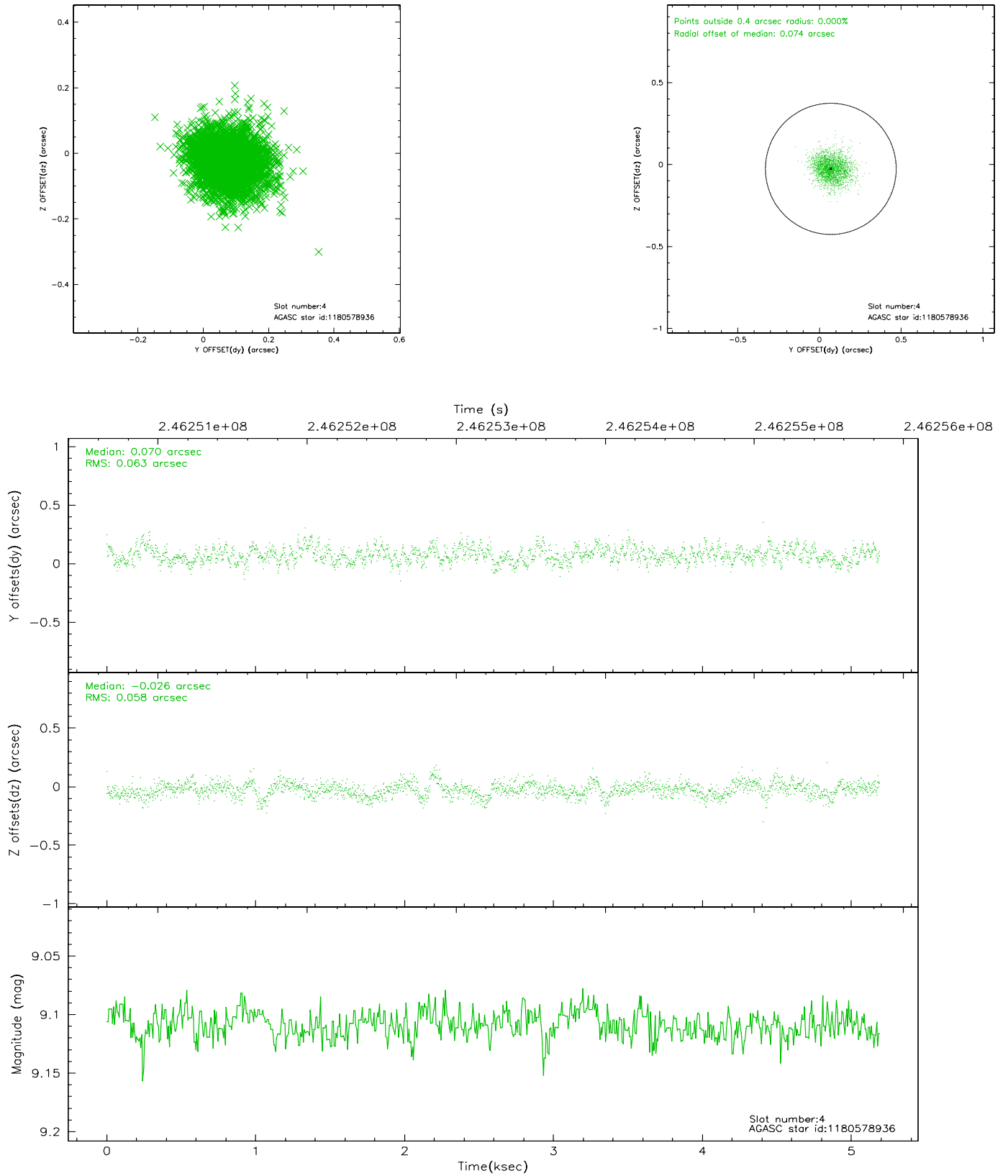
slot	status	id	mag	n_pts	med_dy	med_dz	dr1	dr2	ra	dec	mean_y	mean_z
0	FID	HRC-I-1	7.00	1266	-0.035	-0.057	0.006	0.010	0.000000	0.000000	-762.98	-1299.26
1	FID	HRC-I-2	7.03	1266	0.091	-0.037	0.007	0.011	0.000000	0.000000	849.17	-1301.92
2	FID	HRC-I-4	7.04	1266	0.060	0.002	0.006	0.009	0.000000	0.000000	1280.70	1001.83
3	GUIDE	1180572024	8.42	2532	0.002	-0.015	0.063	0.101	220.930377	-60.981487	-1496.97	1135.56
4	GUIDE	1180578936	9.11	2531	0.070	-0.026	0.090	0.148	220.919358	-61.155393	-1276.54	1722.08
5	GUIDE	1180589152	9.28	2531	-0.080	-0.031	0.095	0.151	219.760705	-61.382926	884.52	1866.98
6	GUIDE	1180603392	9.27	2531	-0.013	0.006	0.118	0.190	221.526441	-61.206550	-2210.36	2242.34
7	GUIDE	1180612104	9.01	2529	0.022	0.063	0.074	0.120	220.502279	-60.631704	-1189.98	-297.36

2.4 Star Slots

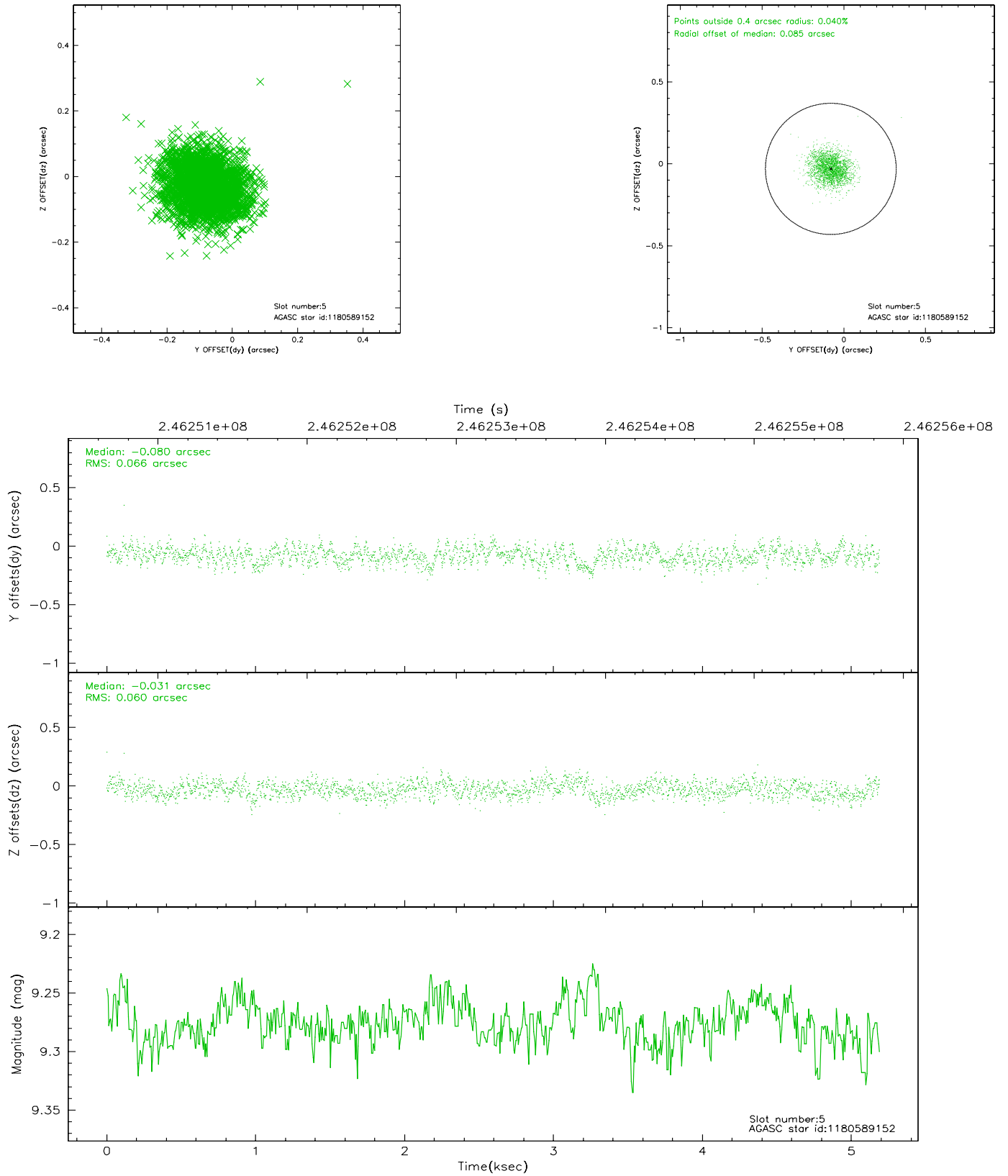
2.4.1 Slot 3



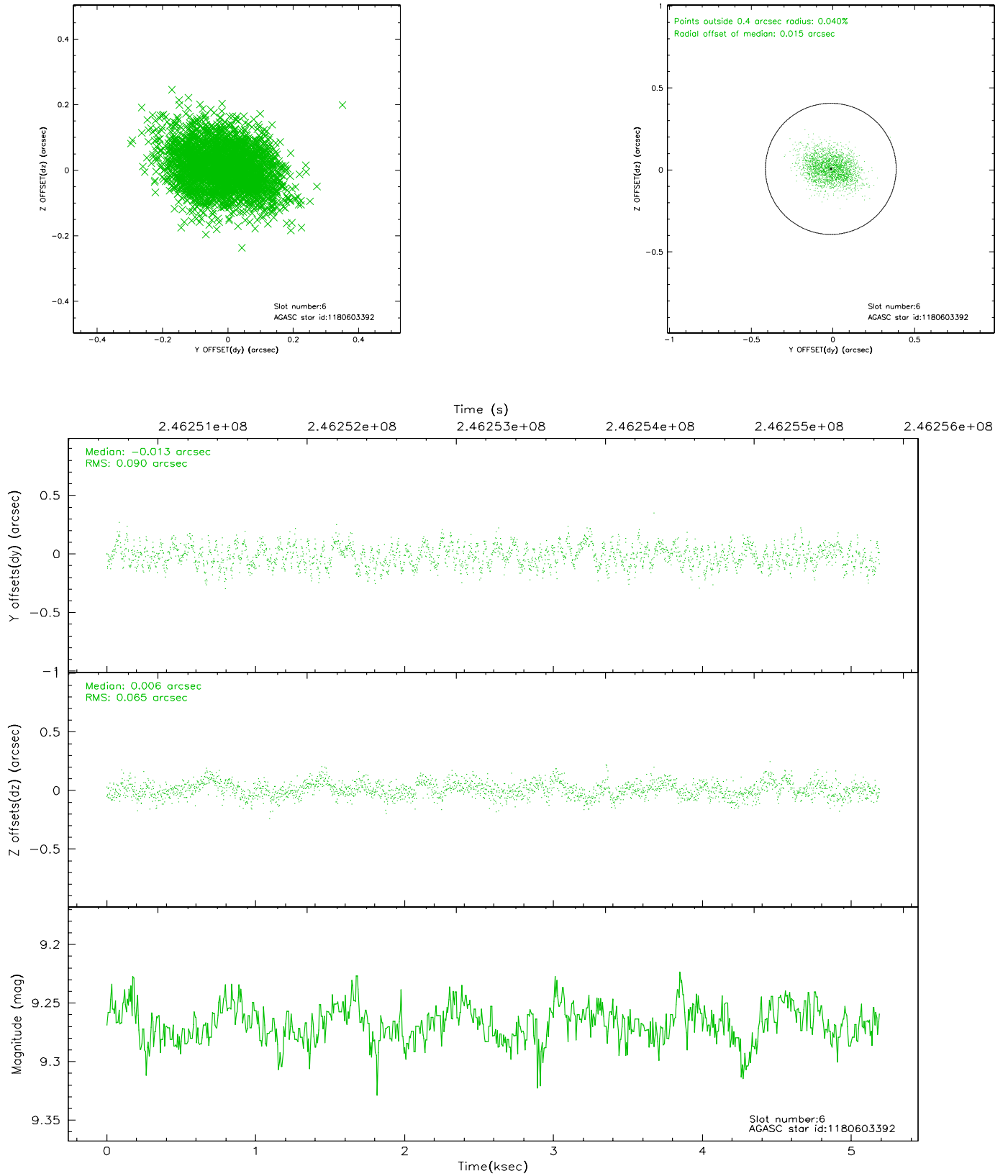
2.4.2 Slot 4



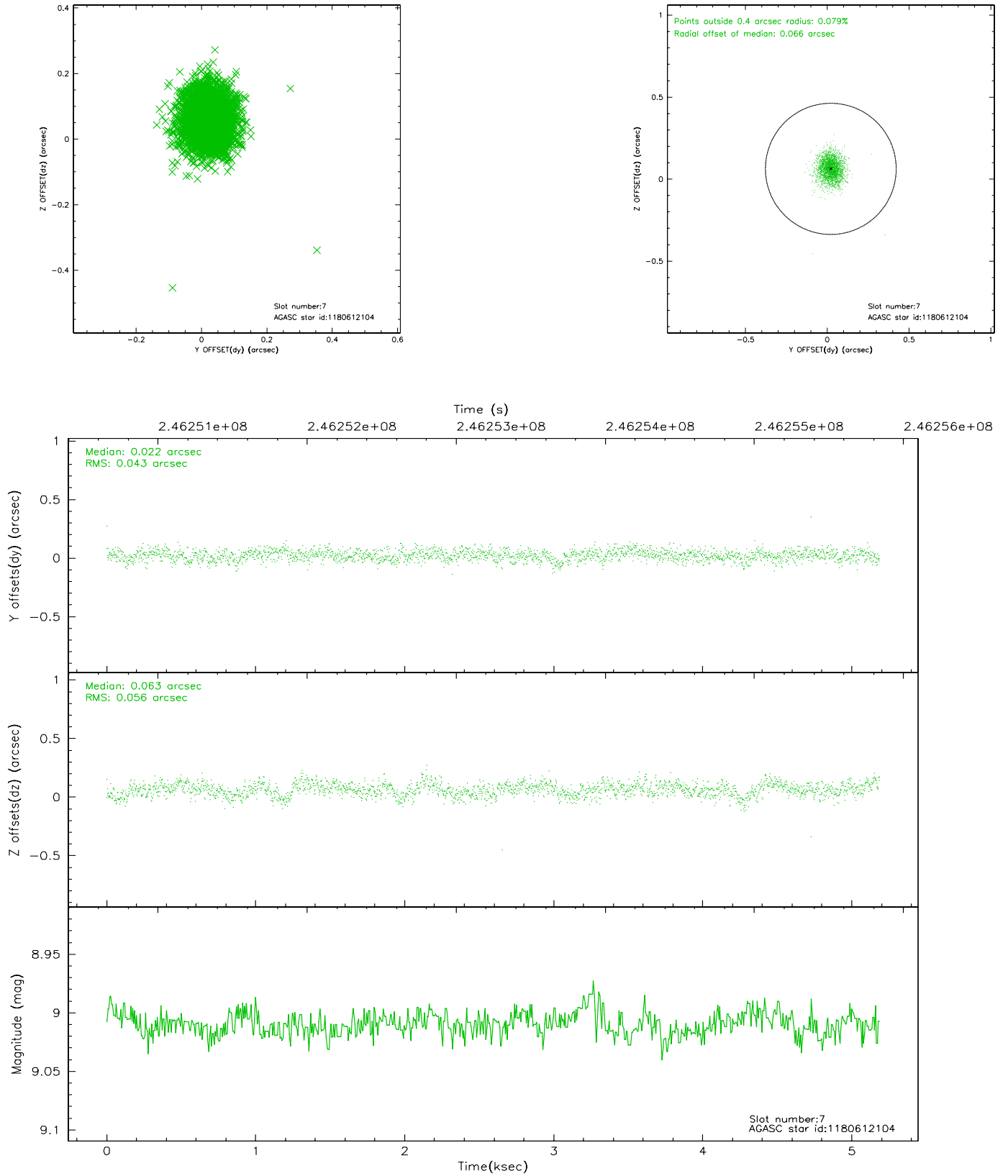
2.4.3 Slot 5



2.4.4 Slot 6

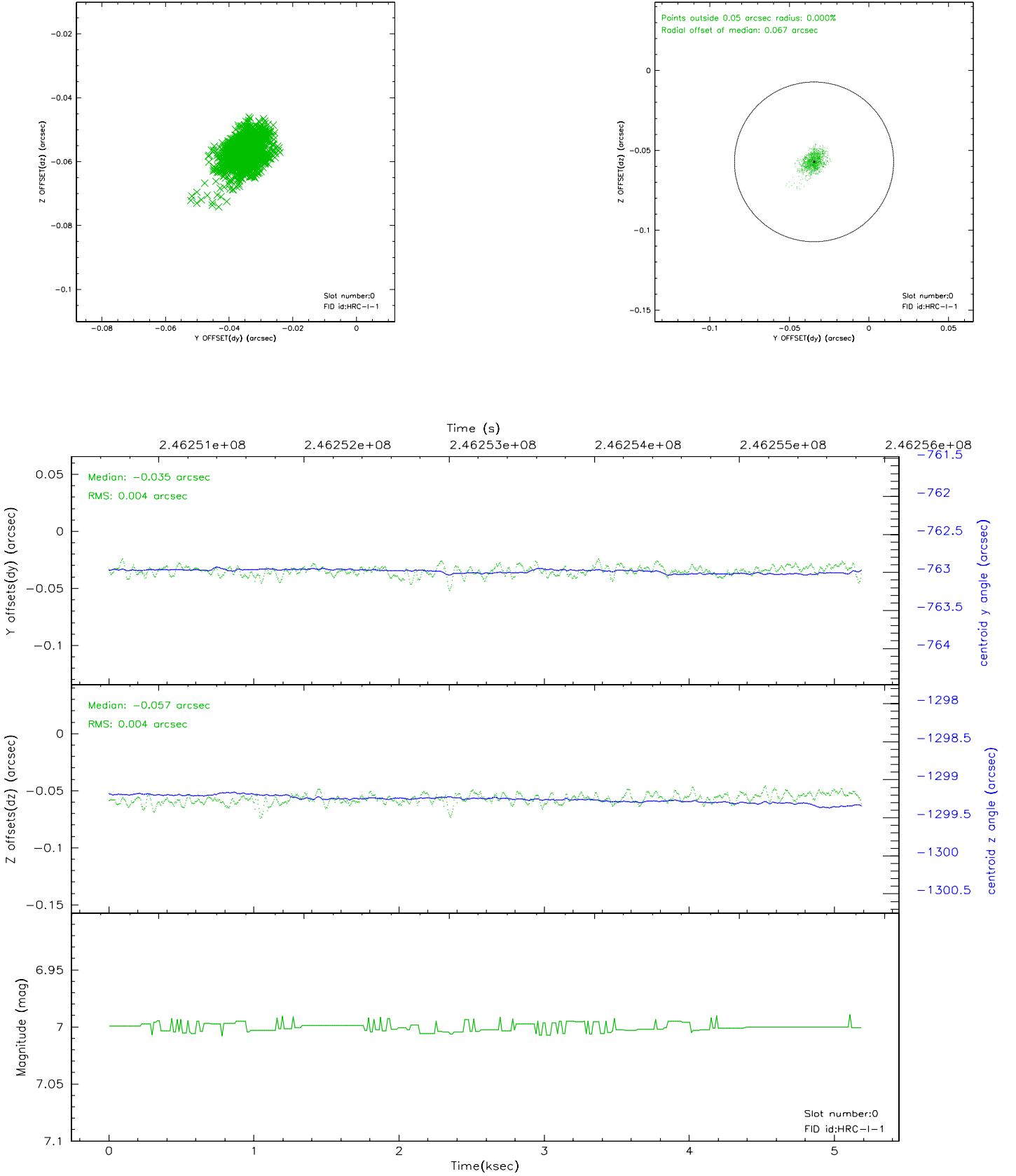


2.4.5 Slot 7

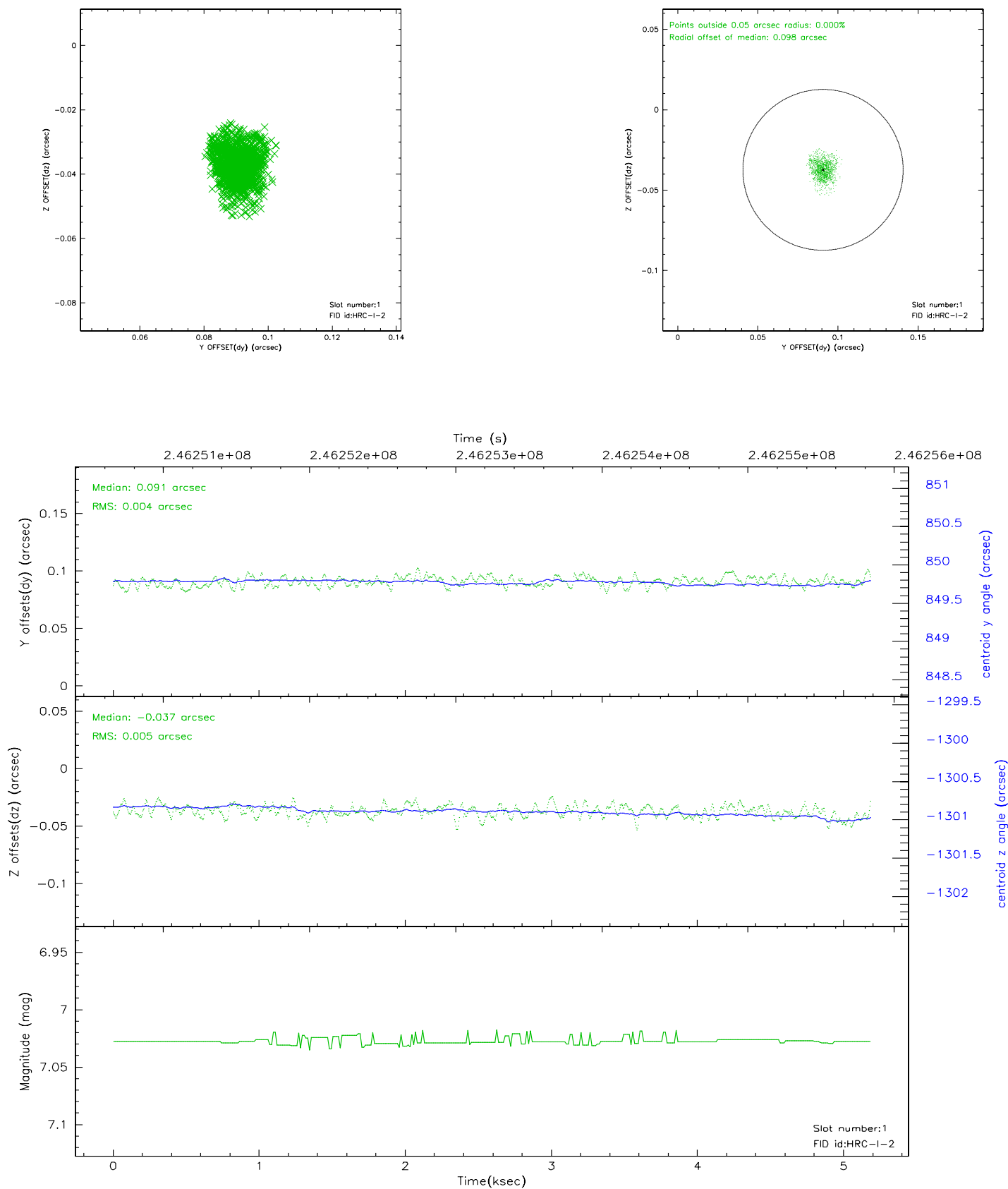


2.5 FID Slots

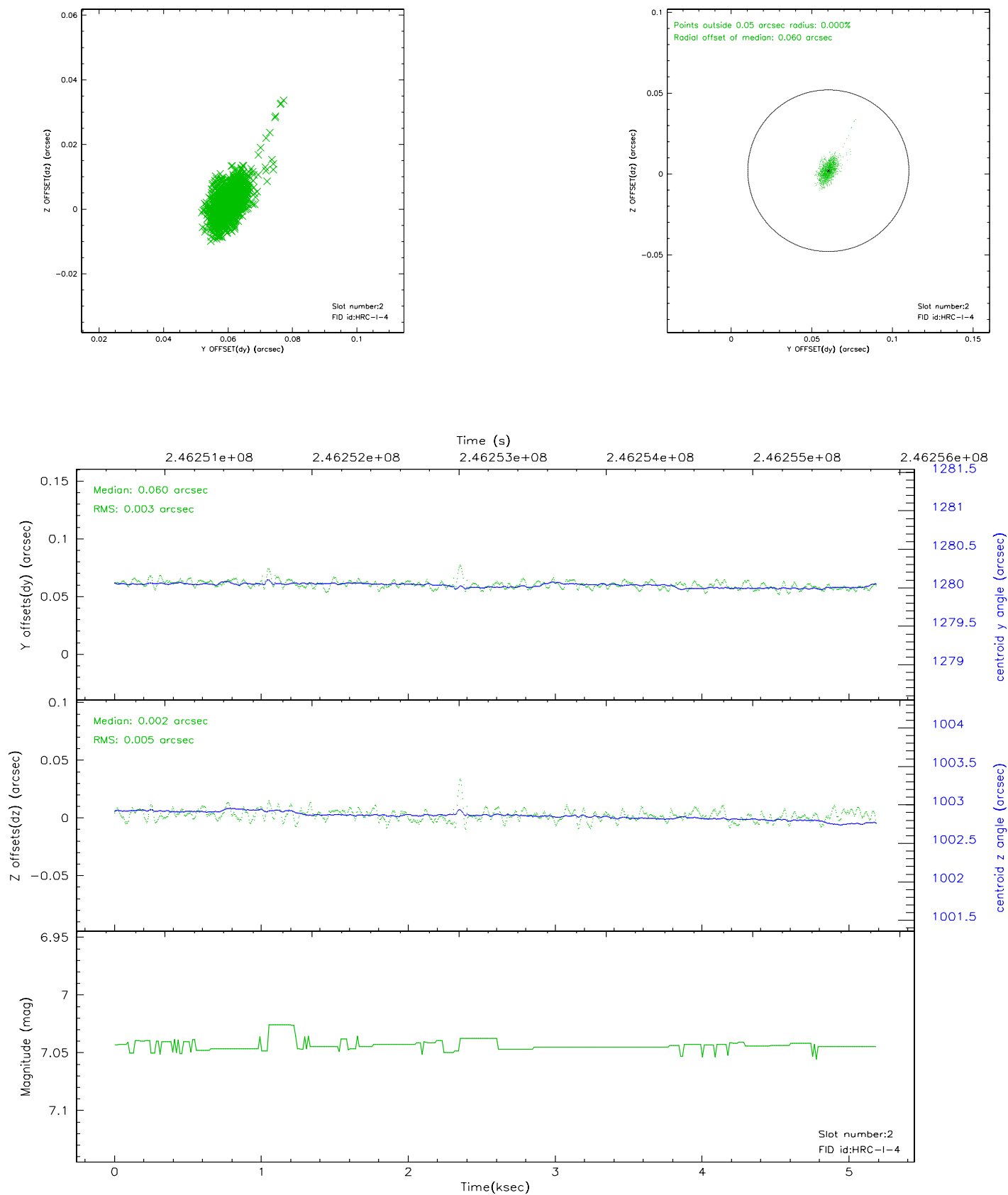
2.5.1 Slot 0



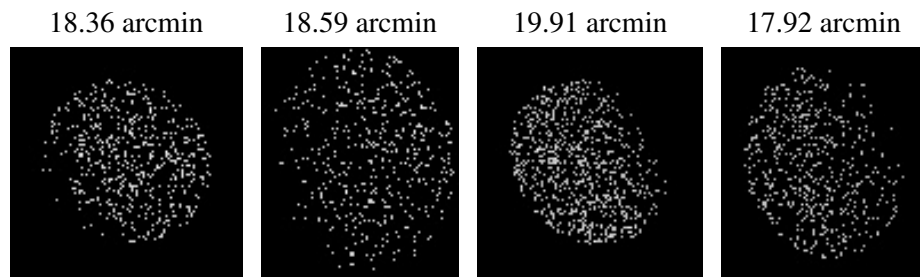
2.5.2 Slot 1



2.5.3 Slot 2



3 Point Sources



A Summary

A.1 Status

V&V Scientist	Jen Lauer
V&V Date (YYYY-MM-DD)	2007.12.07
V&V Edition	1
V&V Disposition and Status	OK
V&V Charge Time	5.187781

A.2 Comments

The current observation has been reprocessed as part of Repro III ('C' supplement) the purpose of which is to update all HRC-I ObsIDs since Jan 2000 to the latest calibrations available for that configuration. Specifically, we are updating the DEGAP solution and the Gain Maps applied. For more information see the Repro IIIC web page at

<http://asc.harvard.edu/cda/repro3.html#IIIC>

and the associated links.