

V&V Reference Report

L2 ASCDS Version : 7.6.7.1

Observation 6291 - L2 Version 002
Chandra X-Ray Center

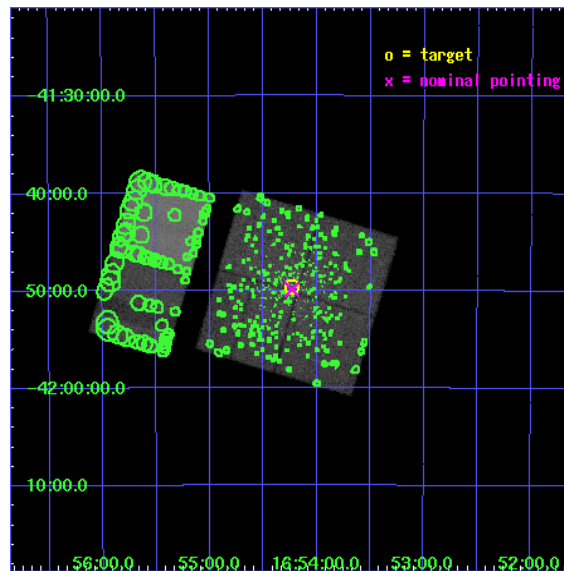
L2 Processing Date : Mar 14 2006

Contents

1	Front	2
2	OBI	3
2.1	OBI	3
2.1.1	Images	3
2.1.2	Bias	3
2.1.3	Parameters	4
2.1.4	Events	4
2.2	Compared Parameters	5
2.3	Aspect	6
2.4	Star Slots	9
2.4.1	Slot 3	9
2.4.2	Slot 4	10
2.4.3	Slot 5	11
2.4.4	Slot 6	12
2.4.5	Slot 7	13
2.5	FID Slots	14
2.5.1	Slot 0	14
2.5.2	Slot 1	15
2.5.3	Slot 2	16
3	Point Sources	17
A	Summary	18
A.1	Status	18
A.2	Comments	18

1 Front

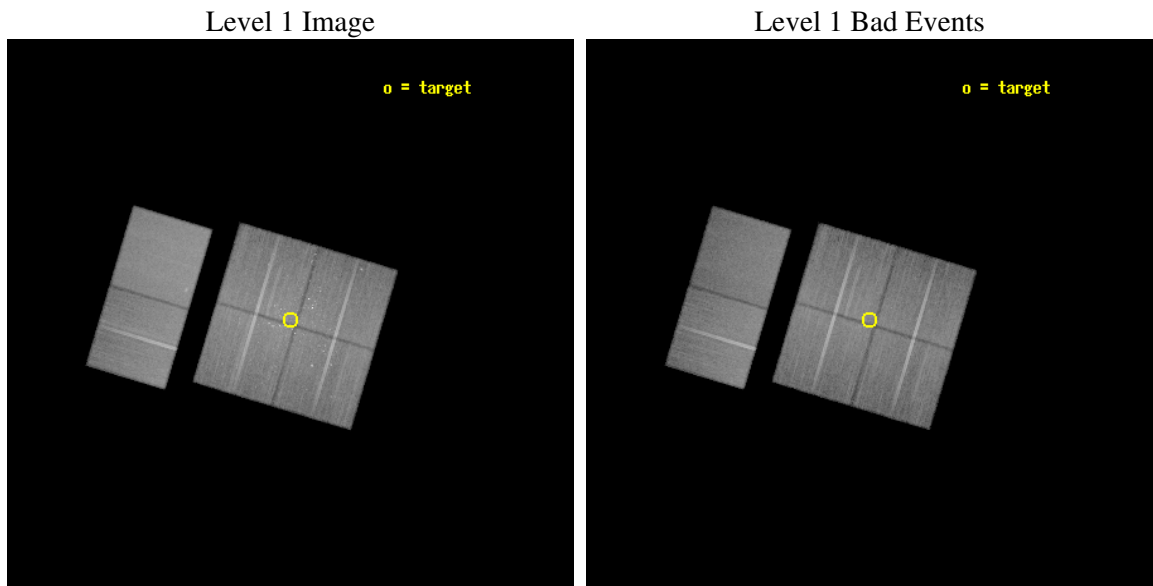
seq_num	200307
obs_id	6291
title	Star formation in the young star cluster NGC 6231
observer	Dr. Steven Murray
object	NGC 6231
dtcycle	0
cycle	P
ra_targ	253.559167
dec_targ	-41.826806
ra_nom	253.55849318282
dec_nom	-41.831401349534
roll_nom	286.74261162311
revision	2
ontime	44953.558842212
livedtime	44384.329812368
ontime0	44956.799832523
ontime1	44956.799832523
ontime2	44953.558842242
ontime3	44953.558842212
ontime6	44956.799832523
ontime7	44956.799832523
l2events	451736



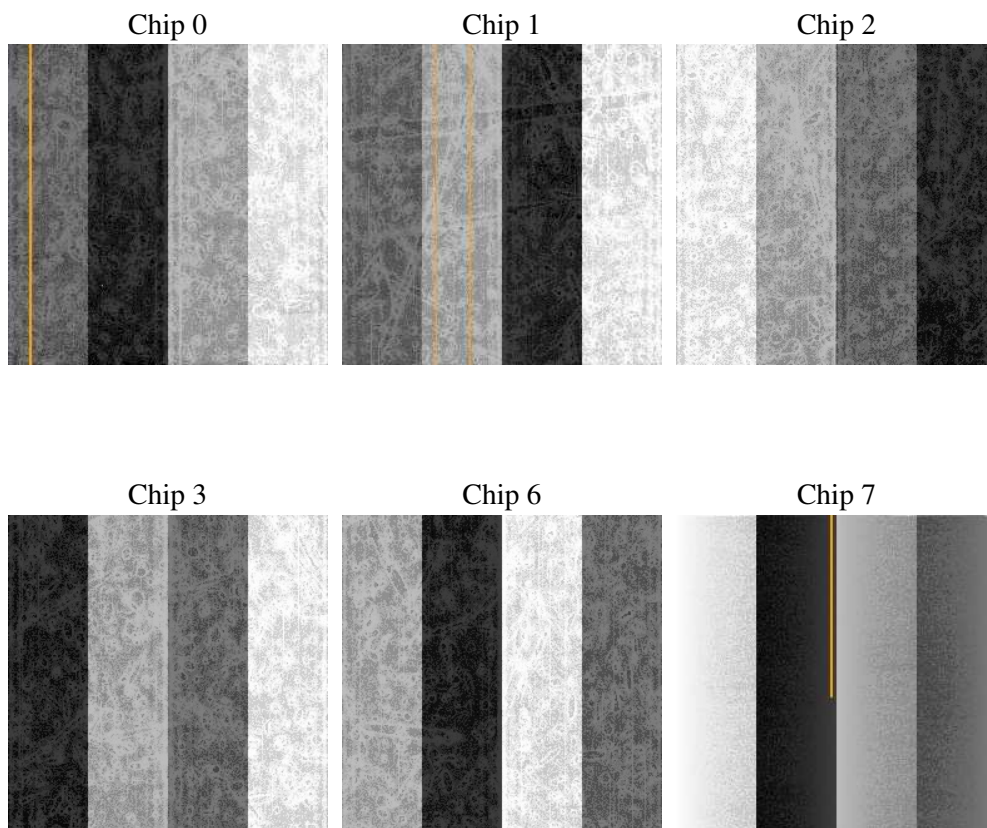
2 OBI

2.1 OBI

2.1.1 Images



2.1.2 Bias



2.1.3 Parameters

obi_num	1
ascdsver	7.6.7.1
caldsver	3.2.1
date	2006-03-14T20:08:19
revision	2

sched_exp_time	45000.000000
ontime	44959.330508351
ontime0	44962.57151854
ontime1	44962.571498662
ontime2	44959.330508381
ontime3	44959.330508351
ontime6	44962.57151854
ontime7	44962.57151854
l1events	2250702

2.1.4 Events

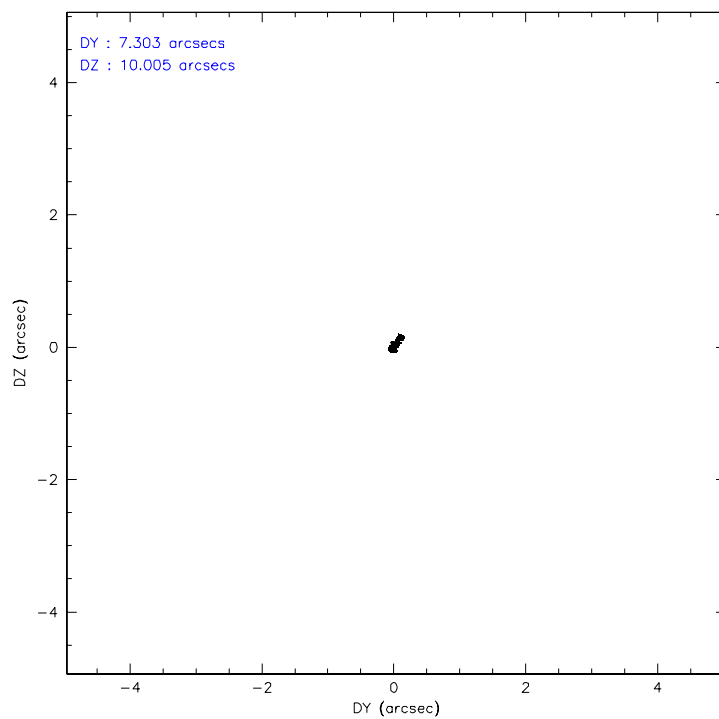
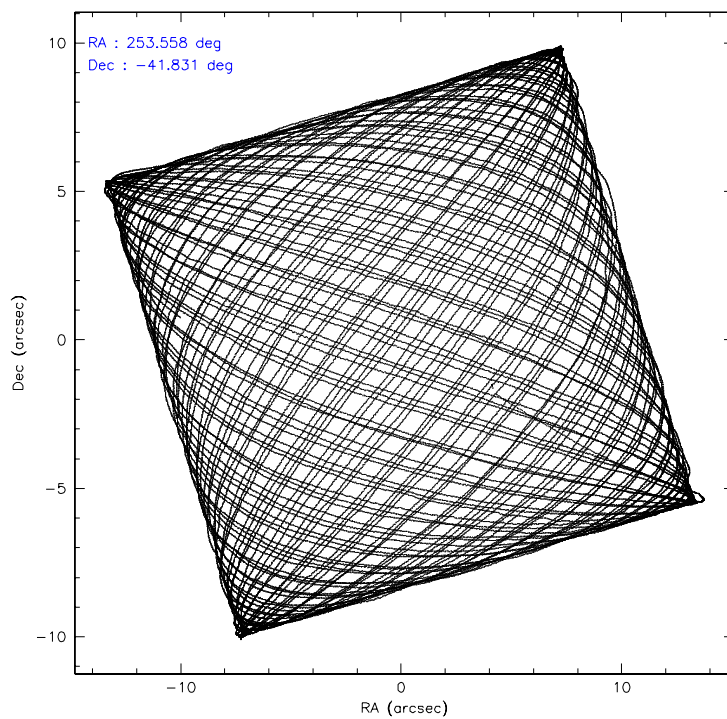
	ccd 0	ccd 1	ccd 2	ccd 3	ccd 6	ccd 7
level 1 events	335996	348075	378240	373423	377955	437013
rejected events	270077	277096	307064	307505	322766	262194
rejected %	80%	79%	81%	82%	85%	59%

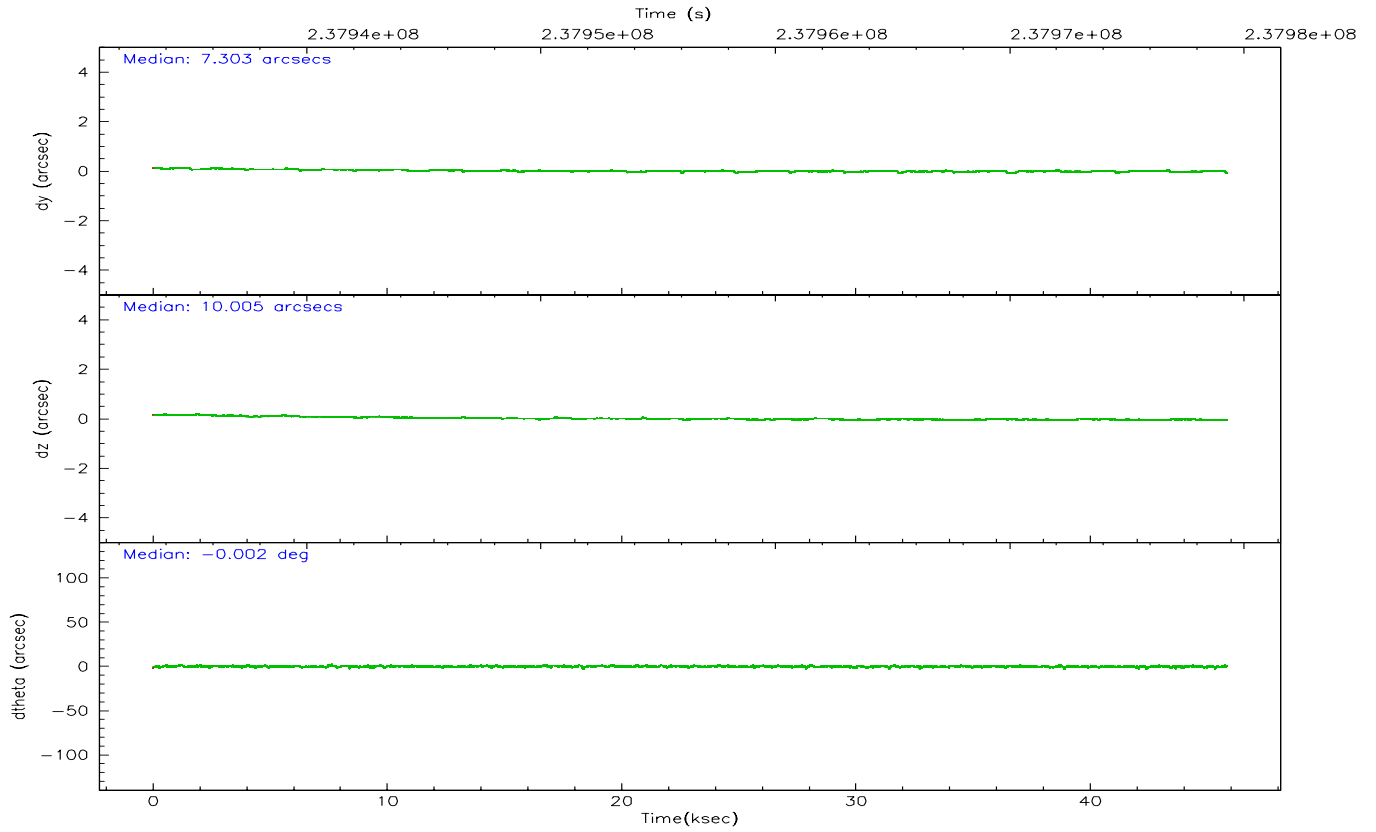
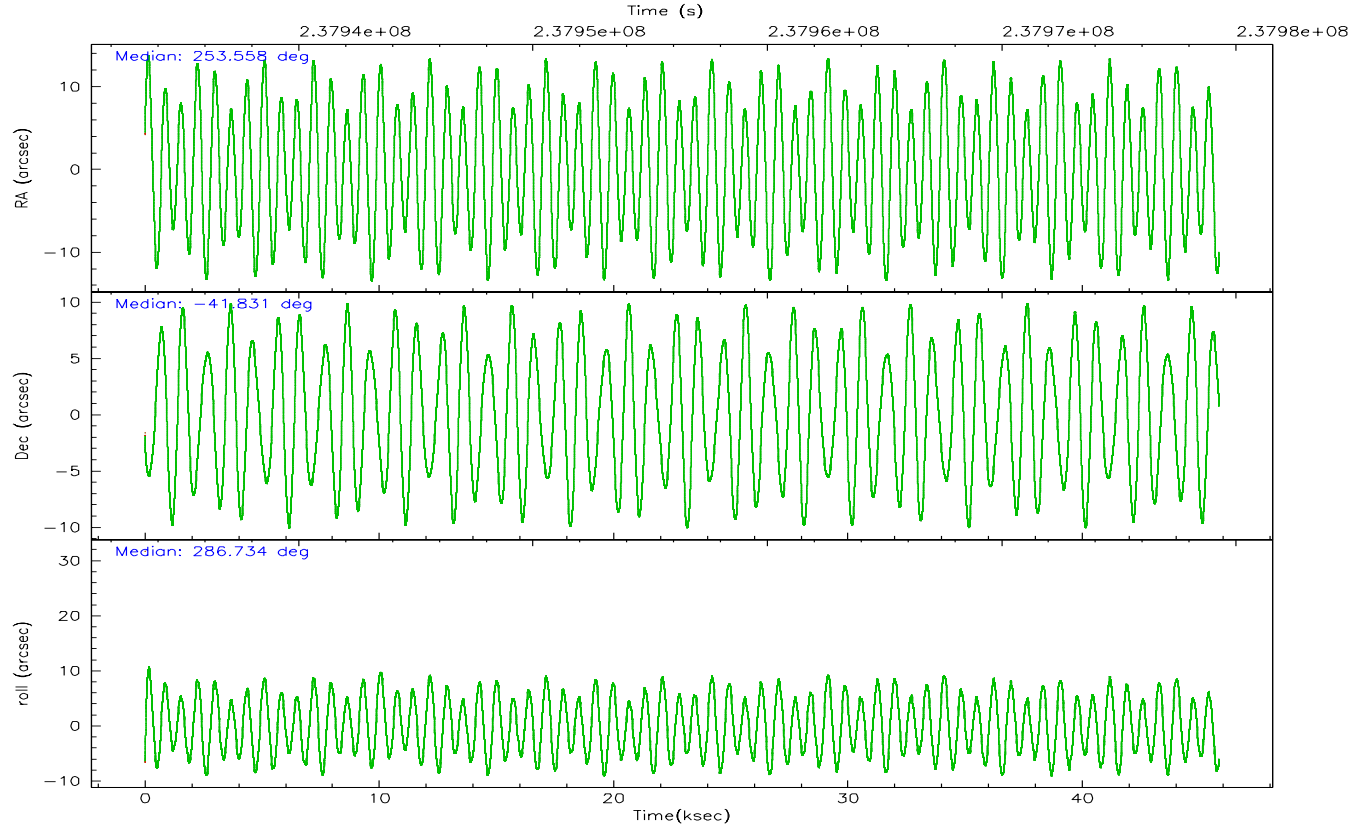
	ccd 0	ccd 1	ccd 2	ccd 3	ccd 6	ccd 7
grade 0 events	32002	33765	37222	33232	22228	11145
	9%	9%	9%	8%	5%	2%
grade 1 events	254	252	325	301	202	343
	0%	0%	0%	0%	0%	0%
grade 2 events	15505	16663	15366	14490	15284	45594
	4%	4%	4%	3%	4%	10%
grade 3 events	4185	4499	4011	4090	3692	9134
	1%	1%	1%	1%	0%	2%
grade 4 events	3875	4377	4884	4145	3697	8785
	1%	1%	1%	1%	0%	2%
grade 5 events	12477	13062	12385	14183	14640	27686
	3%	3%	3%	3%	3%	6%
grade 6 events	10352	11686	9705	9972	10296	100177
	3%	3%	2%	2%	2%	22%
grade 7 events	257346	263771	294342	293010	307916	234149
	76%	75%	77%	78%	81%	53%

2.2 Compared Parameters

Parameter	Planned	Actual	Parameter	Planned	Actual
Instrument	ACIS	ACIS	Obspar format version number	6	6
Detector	ACIS-012367	ACIS-012367	Obspar file type	PREDICTED	ACTUAL
Grating	NONE	NONE	Obspar update status	NONE	UPDATED
Data mode	FAINT	FAINT	On-chip summing requested	N	N
Observation mode	POINTING	POINTING	Subarray requested	NONE	NONE
Pointing RA	253.531627	253.5584931828231	Alternating exposures requested	N	N
Pointing Dec	-41.812733	-41.83140134953415	Primary exposure time	0.000000	3.2
Pointing Roll	286.516010	286.7426116231078			
SIM focus pos (mm)	-0.782348	-0.7809083437167272			
SIM defocus (mm)	0	0.001439871863259334			
SIM translation stage pos (mm)	-233.592463	-233.5874344608287			
SIM translation stage offset (mm)	0	-0.005018542100998502			
Observation start time	237934279.184000	237932992.30963			
Observation start date	2005-07-16T20:50:15	2005-07-16T20:29:52			
Observation end time	237979279.184000	237979695.41176			
Observation end date	2005-07-17T09:20:15	2005-07-17T09:28:15			
Read mode	TIMED	TIMED			

2.3 Aspect



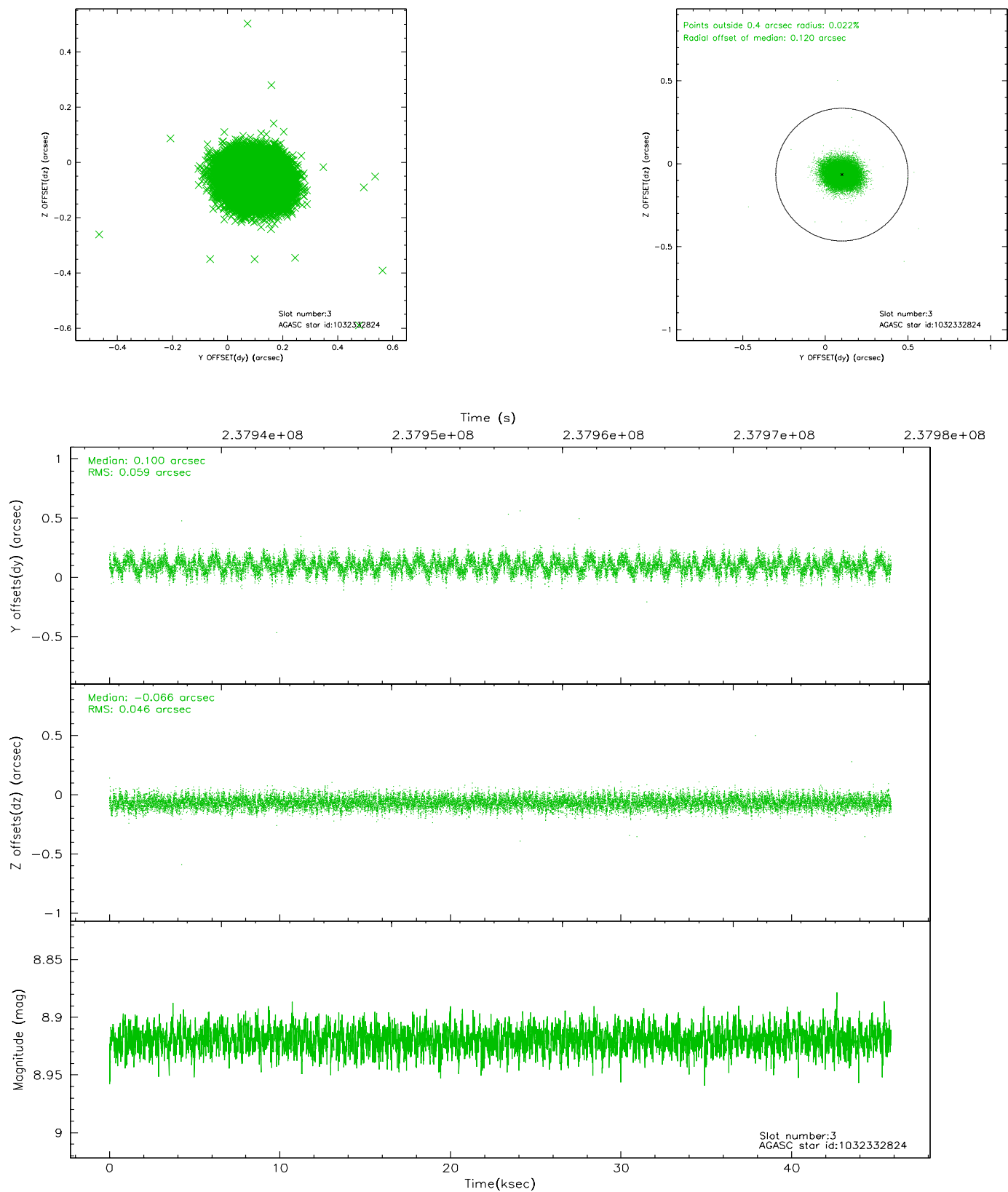


Slot Statistics

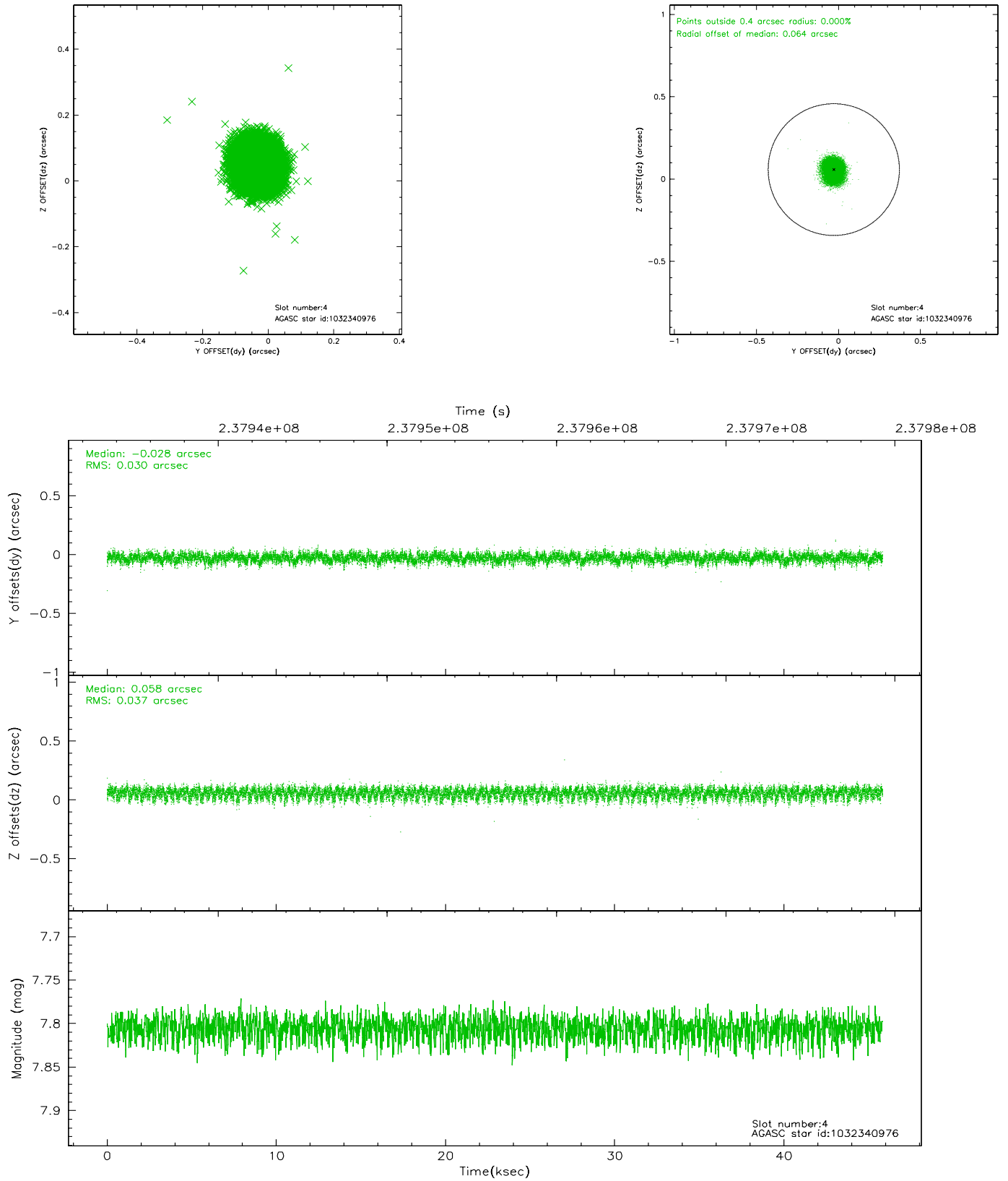
slot	status	id	mag	n_pts	med_dy	med_dz	dr1	dr2	ra	dec	mean_y	mean_z
0	FID	ACIS-I-1	7.24	11181	-0.038	0.044	0.011	0.019	0.000000	0.000000	932.32	-833.45
1	FID	ACIS-I-4	7.18	11181	0.106	0.011	0.010	0.017	0.000000	0.000000	2152.51	1066.32
2	FID	ACIS-I-5	7.23	11179	-0.166	0.015	0.008	0.014	0.000000	0.000000	-1815.81	1064.19
3	GUIDE	1032332824	8.92	22350	0.100	-0.066	0.080	0.126	253.226957	-42.348581	1620.96	-1325.63
4	GUIDE	1032340976	7.81	22355	-0.028	0.058	0.051	0.083	254.202894	-41.913283	865.12	1619.47
5	GUIDE	1032343488	6.94	22361	0.017	-0.021	0.051	0.079	252.725884	-41.830381	-543.17	-2092.96
6	GUIDE	1031816088	7.77	22359	-0.033	0.028	0.082	0.143	254.188586	-41.154482	-1759.41	2378.97
7	GUIDE	1032343792	8.31	22355	-0.062	0.008	0.078	0.125	252.506015	-41.621252	-1429.36	-2454.81

2.4 Star Slots

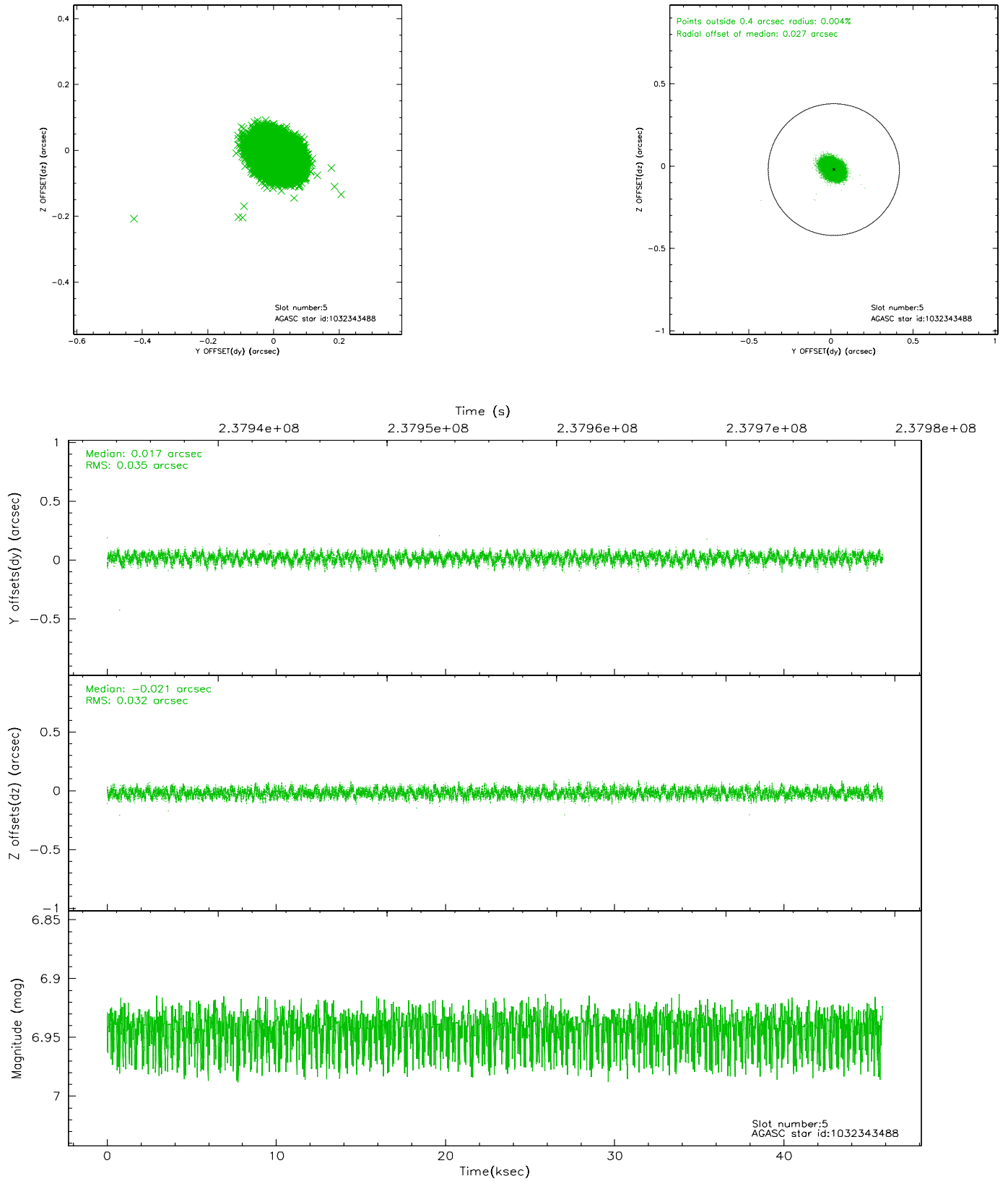
2.4.1 Slot 3



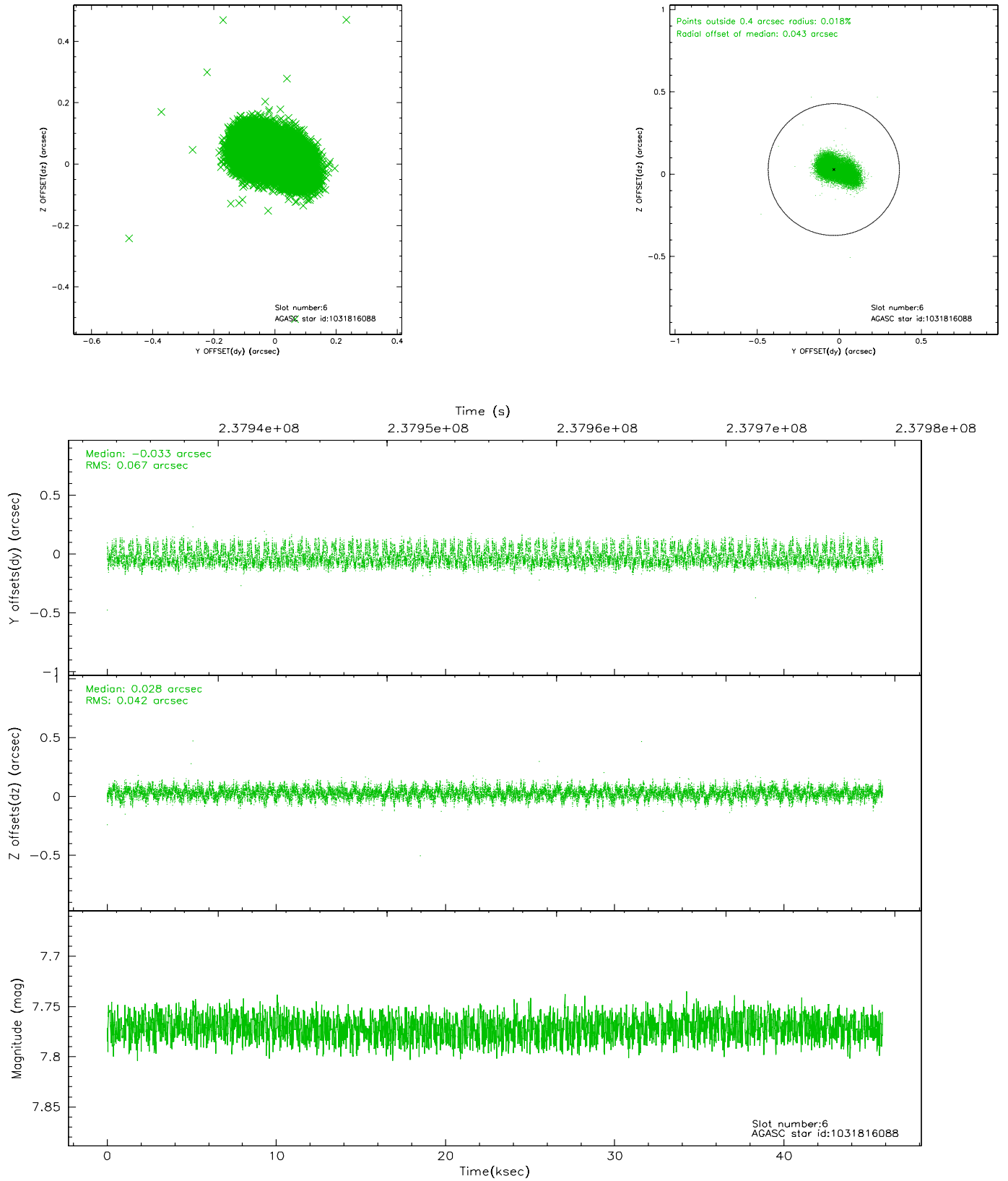
2.4.2 Slot 4



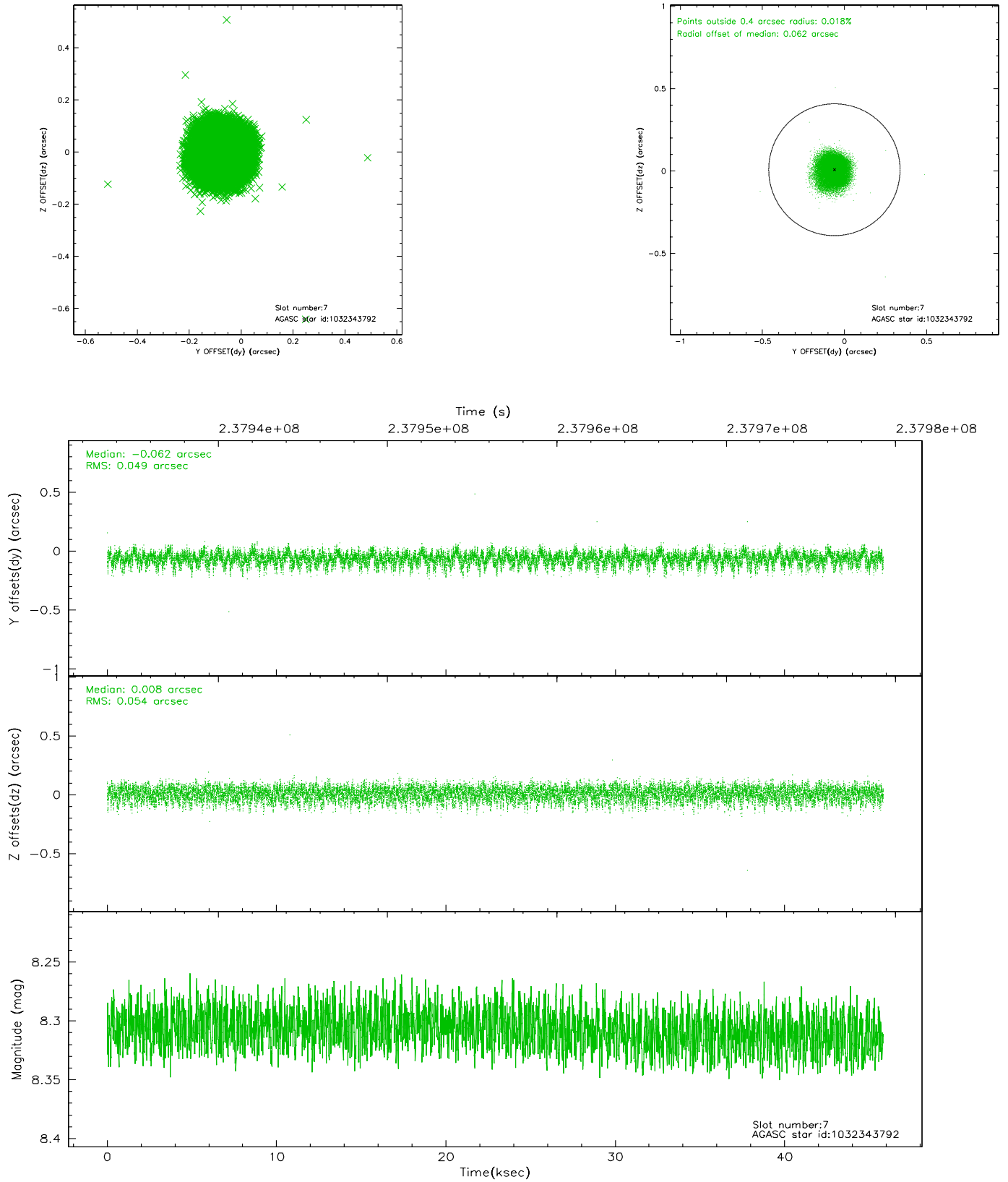
2.4.3 Slot 5



2.4.4 Slot 6

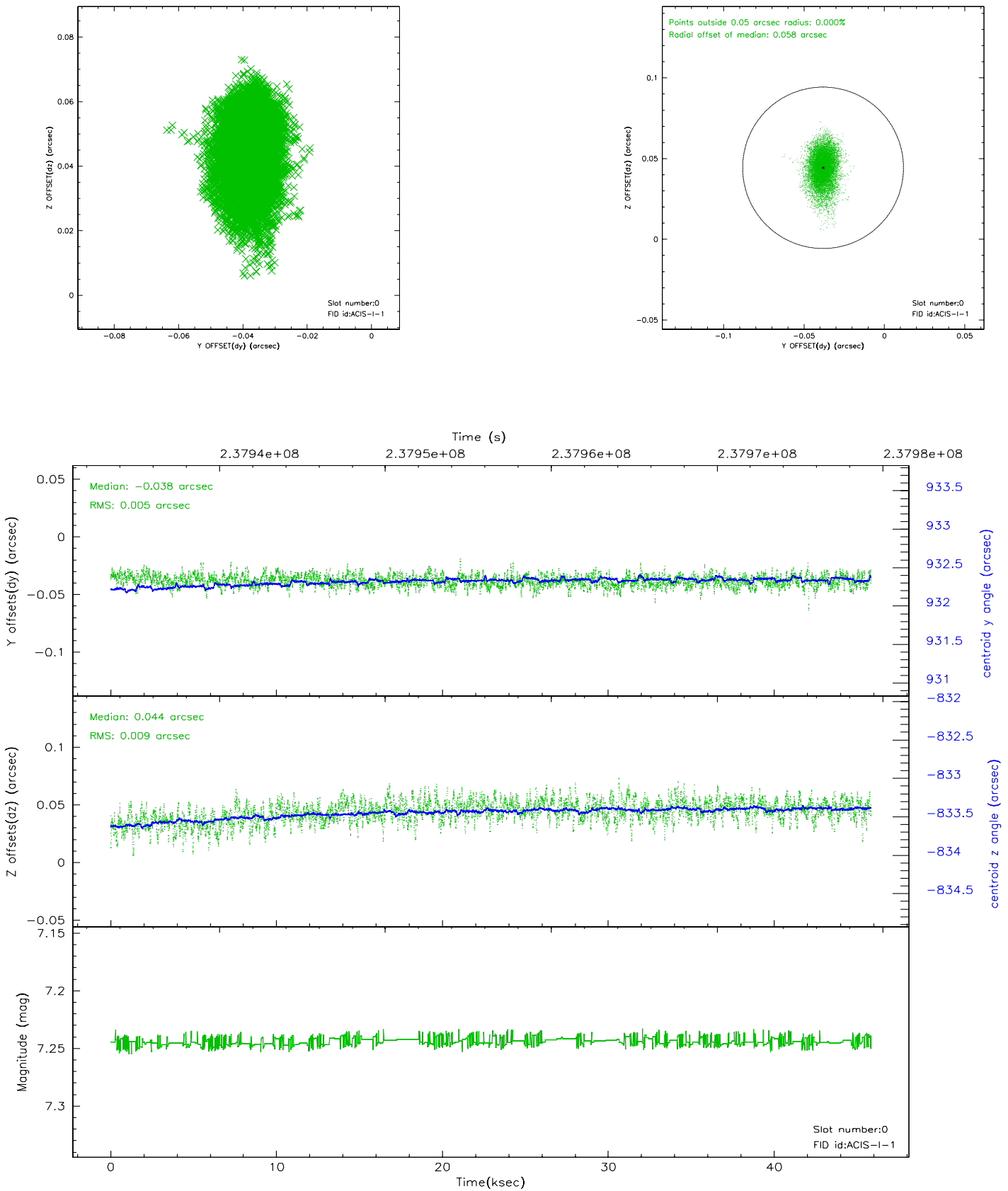


2.4.5 Slot 7

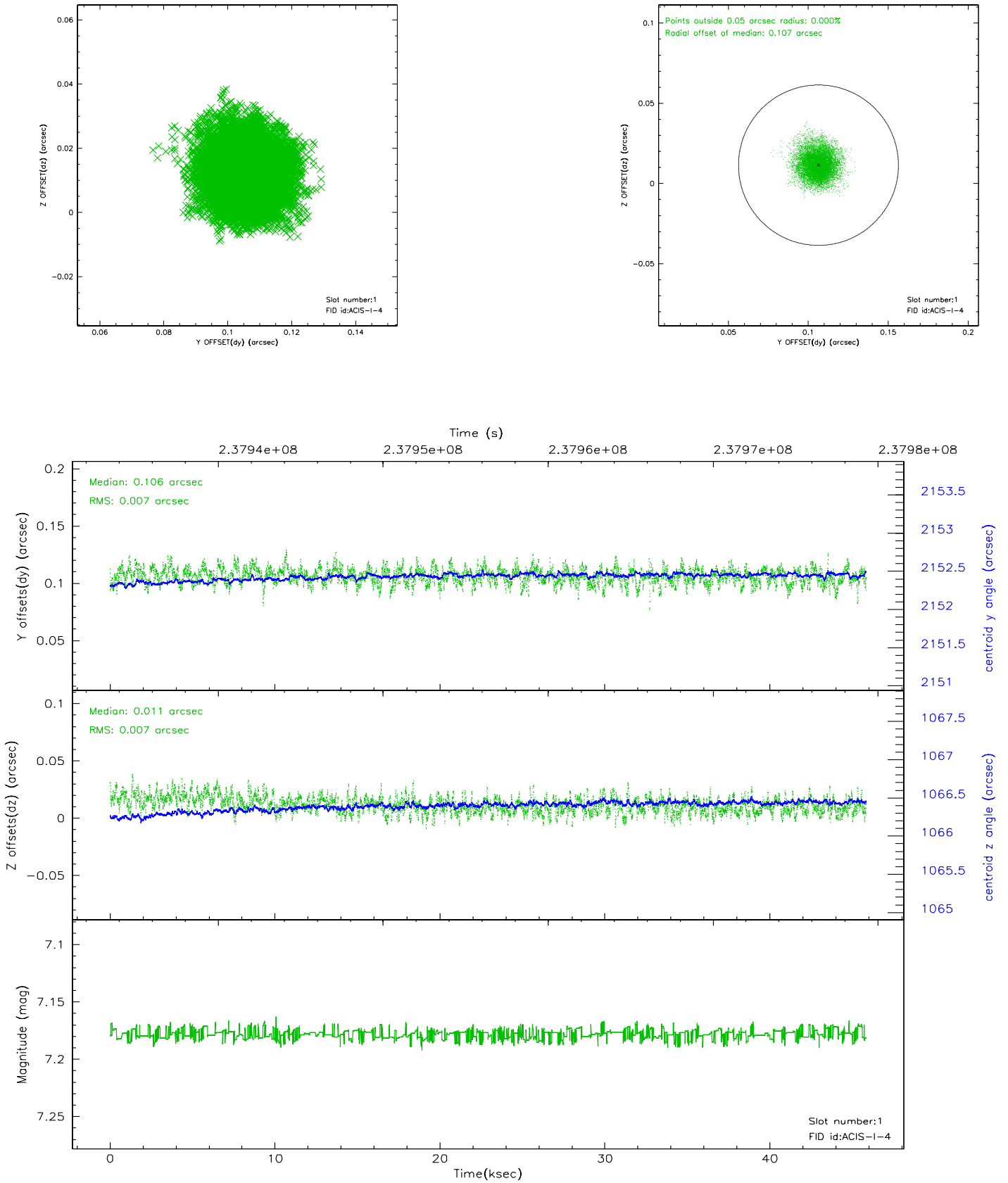


2.5 FID Slots

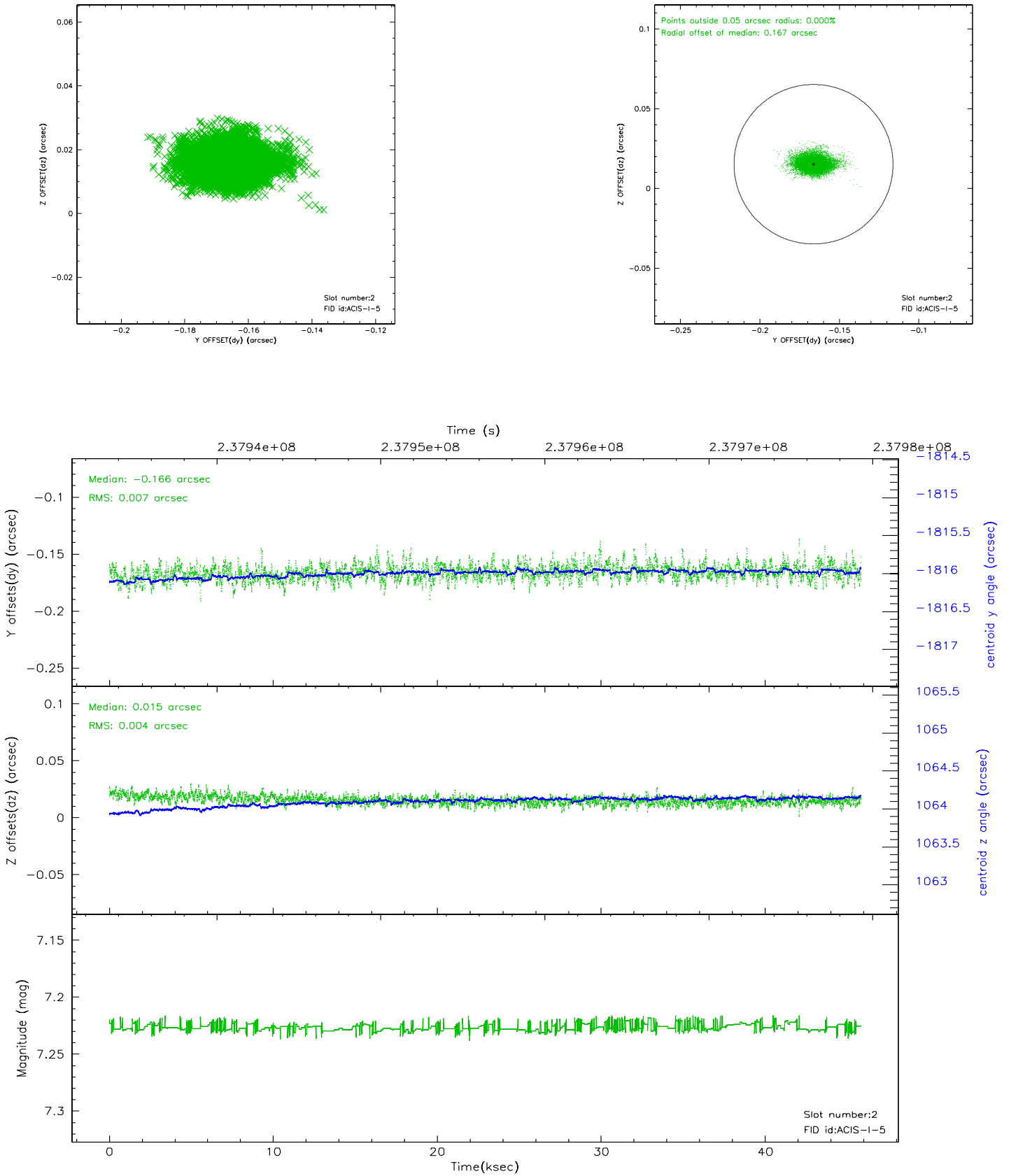
2.5.1 Slot 0



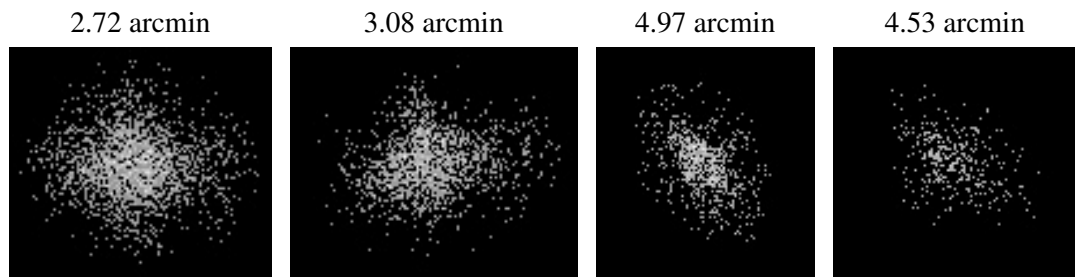
2.5.2 Slot 1



2.5.3 Slot 2



3 Point Sources



A Summary

A.1 Status

V&V Scientist	Jen Lauer
V&V Date (YYYY-MM-DD)	2006.03.15
V&V Edition	1
V&V Disposition and Status	OK
V&V Charge Time	44.95355

A.2 Comments