

V&V Reference Report

L2 ASCDS Version : 7.6.7.1

Observation 5425 - L2 Version 002
Chandra X-Ray Center

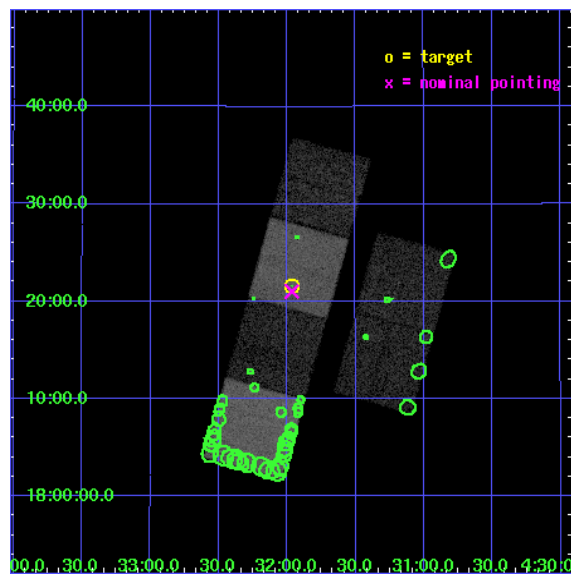
L2 Processing Date : Apr 7 2006

Contents

1	Front	2
2	OBI	3
2.1	OBI	3
2.1.1	Images	3
2.1.2	Bias	3
2.1.3	Parameters	4
2.1.4	Events	4
2.2	Compared Parameters	5
2.3	Aspect	6
2.4	Star Slots	9
2.4.1	Slot 3	9
2.4.2	Slot 4	10
2.4.3	Slot 5	11
2.4.4	Slot 6	12
2.4.5	Slot 7	13
2.5	FID Slots	14
2.5.1	Slot 0	14
2.5.2	Slot 1	15
2.5.3	Slot 2	16
3	Point Sources	17
A	Summary	18
A.1	Status	18
A.2	Comments	18

1 Front

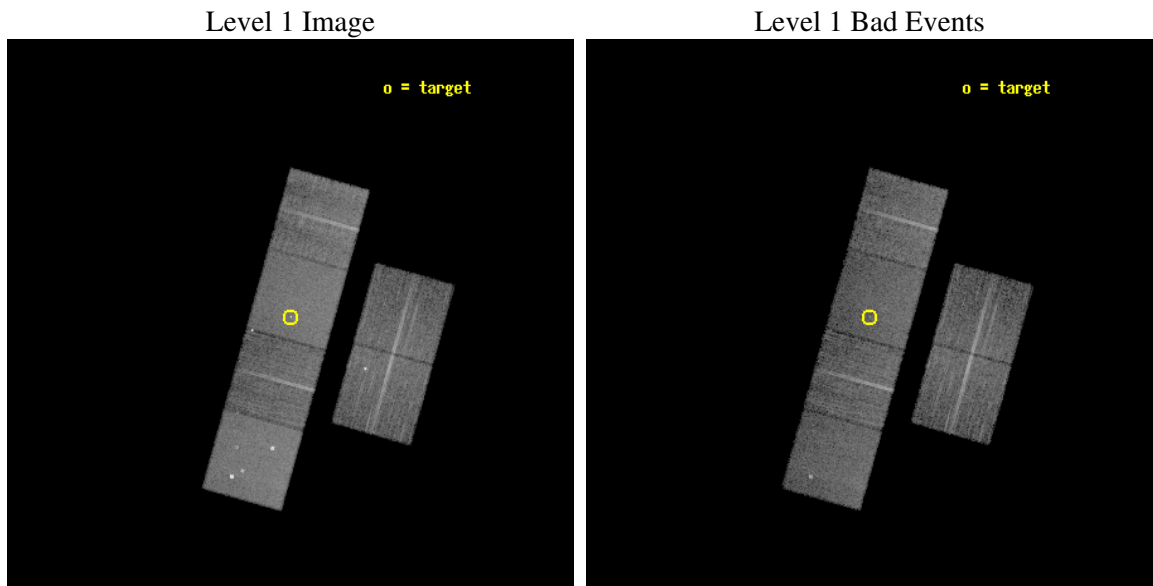
seq_num	200358
obs_id	5425
title	How Do T Tauri Stars Generate X-rays?
observer	Prof. David Weintraub
object	V710 Tau
dtcycle	0
cycle	P
ra_targ	67.990417
dec_targ	18.36025
ra_nom	67.991389448026
dec_nom	18.350646014159
roll_nom	285.61606772247
revision	2
ontime	11023.999958932
livetime	10884.407433597
ontime2	11023.999958932
ontime3	11023.999958932
ontime5	11023.999958932
ontime6	11023.999958932
ontime7	11023.999958932
ontime8	11023.999958932
l2events	131043



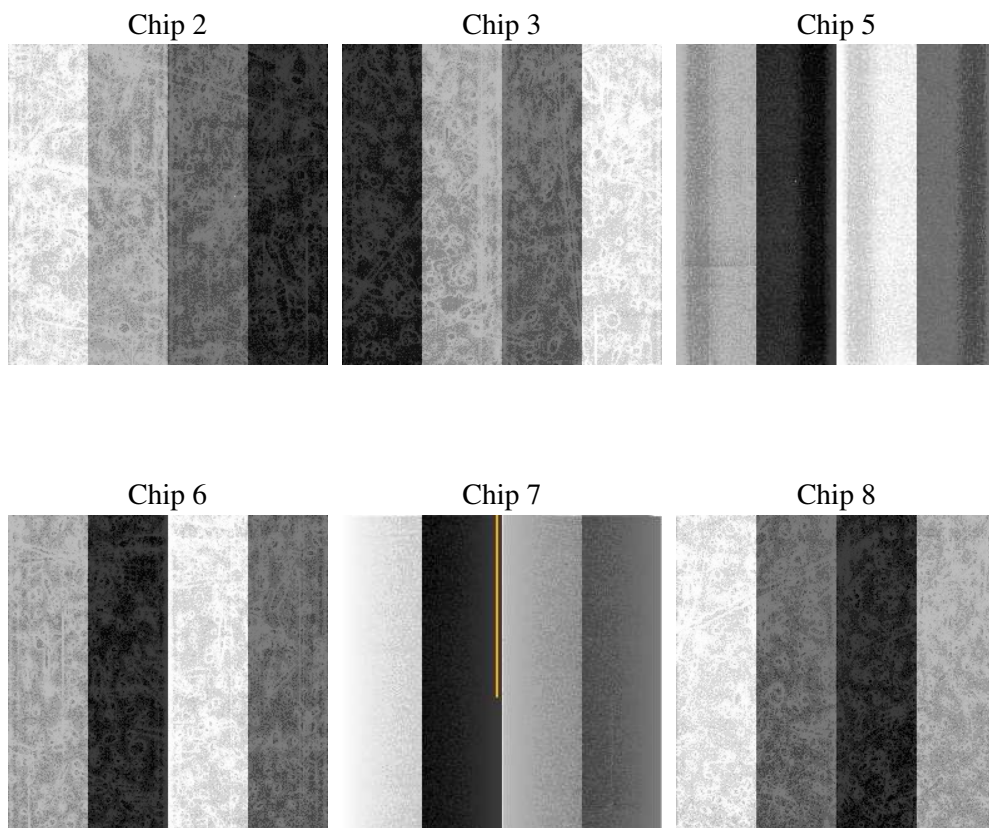
2 OBI

2.1 OBI

2.1.1 Images



2.1.2 Bias



2.1.3 Parameters

obi_num	0
ascdsver	7.6.7.1
caldsver	3.2.1
date	2006-04-07T14:51:15
revision	2

sched_exp_time	11000.000000
ontime	11029.152787089
ontime2	11029.152787089
ontime3	11029.152787089
ontime5	11029.152787089
ontime6	11029.152787089
ontime7	11029.152787089
ontime8	11029.152787089
l1events	608216

2.1.4 Events

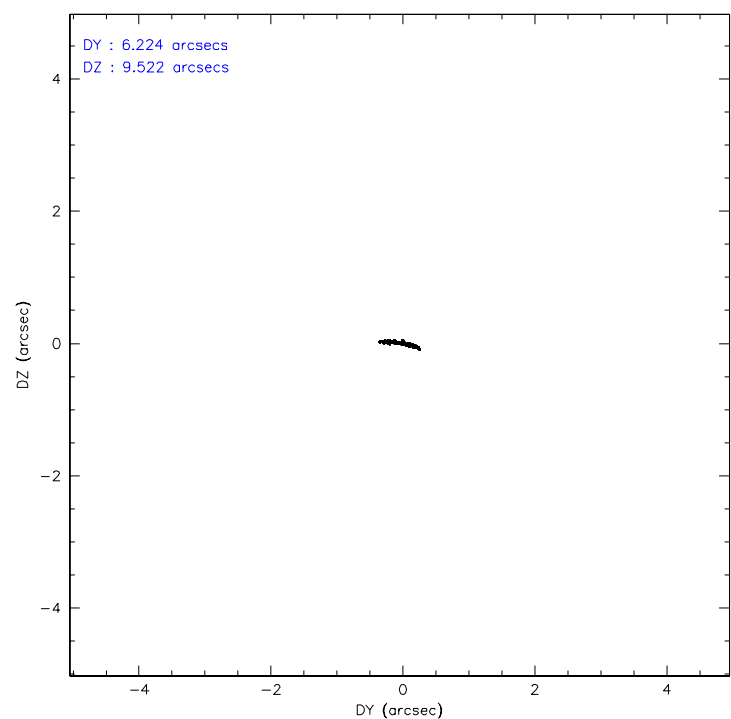
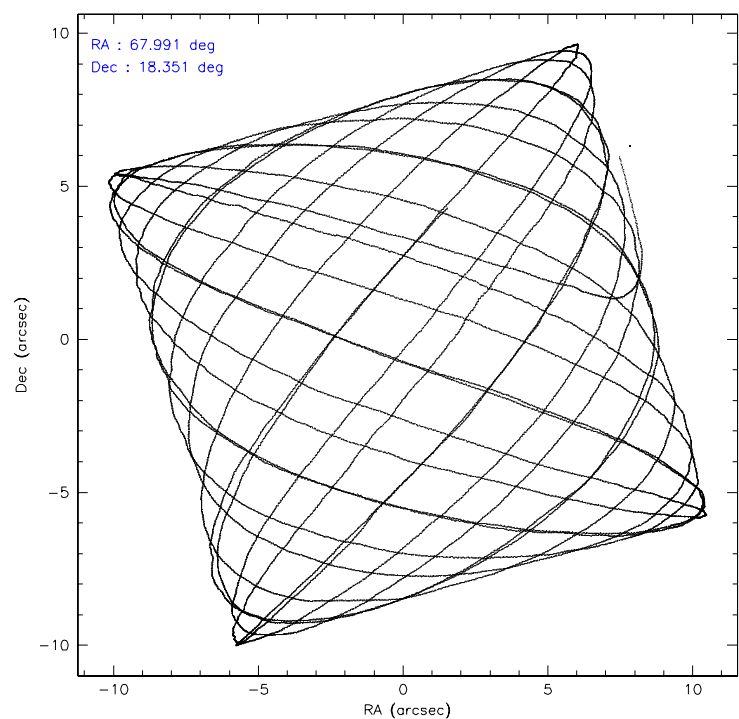
	ccd 2	ccd 3	ccd 5	ccd 6	ccd 7	ccd 8
level 1 events	90609	81602	129550	85991	113935	106529
rejected events	79254	71921	70428	75380	70512	83878
rejected %	87%	88%	54%	87%	61%	78%

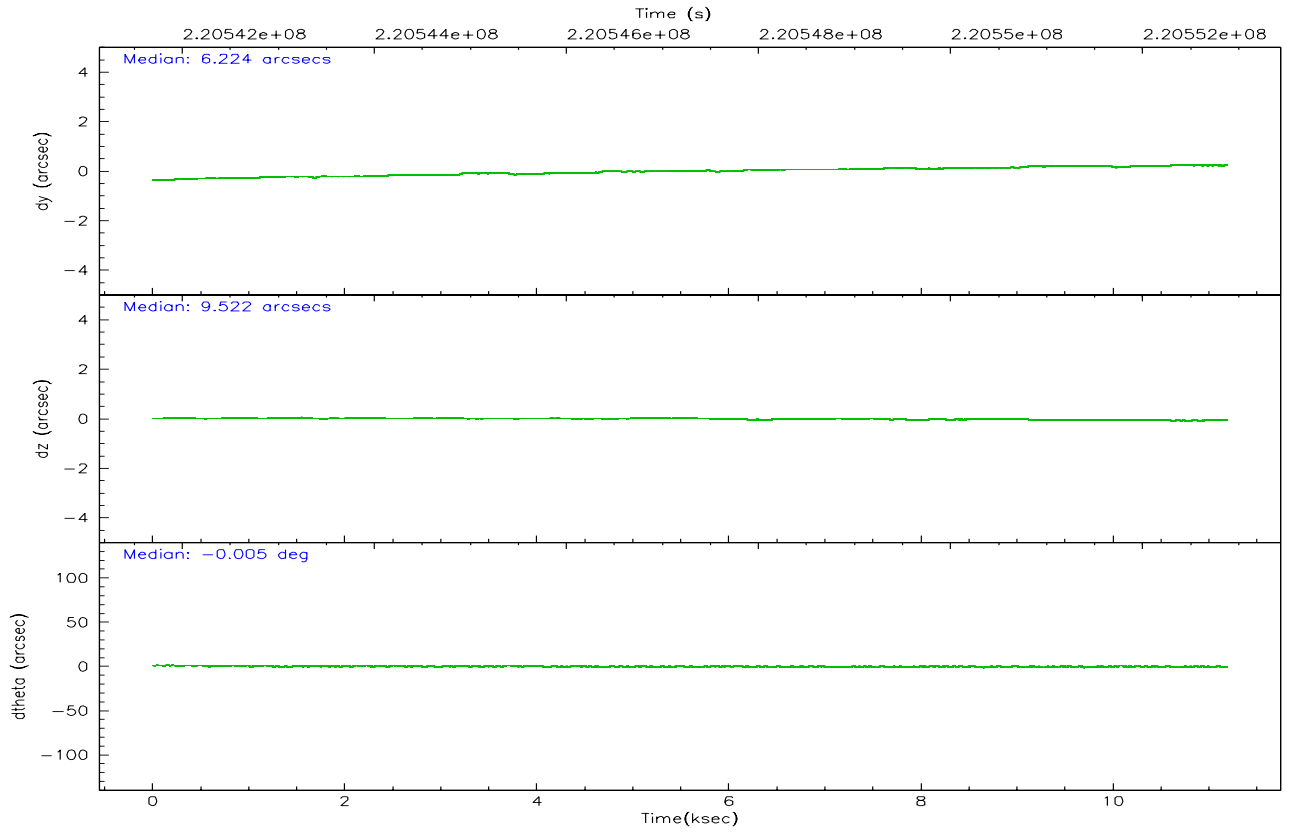
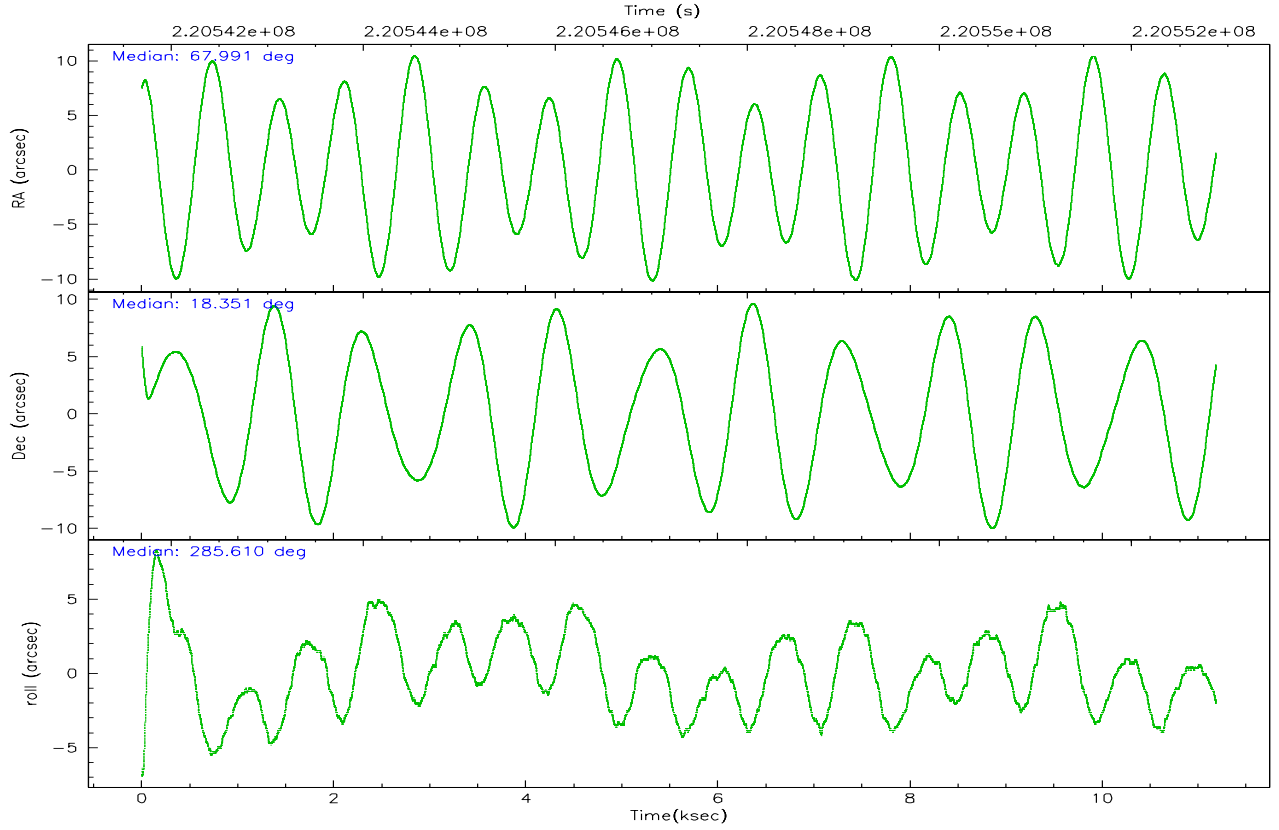
	ccd 2	ccd 3	ccd 5	ccd 6	ccd 7	ccd 8
grade 0 events	5521	4186	6698	4490	2549	6937
	6%	5%	5%	5%	2%	6%
grade 1 events	64	44	120	59	76	81
	0%	0%	0%	0%	0%	0%
grade 2 events	2291	1859	18846	2164	10777	5069
	2%	2%	14%	2%	9%	4%
grade 3 events	933	977	1190	933	2227	2408
	1%	1%	0%	1%	1%	2%
grade 4 events	963	921	1118	950	2145	2212
	1%	1%	0%	1%	1%	2%
grade 5 events	3329	3597	5949	3868	7337	5092
	3%	4%	4%	4%	6%	4%
grade 6 events	1654	1745	31302	2081	25745	6033
	1%	2%	24%	2%	22%	5%
grade 7 events	75854	68273	64327	71446	63079	78697
	83%	83%	49%	83%	55%	73%

2.2 Compared Parameters

Parameter	Planned	Actual	Parameter	Planned	Actual
Instrument	ACIS	ACIS	Obspar format version number	6	6
Detector	ACIS-235678	ACIS-235678	Obspar file type	PREDICTED	ACTUAL
Grating	NONE	NONE	Obspar update status	NONE	UPDATED
Data mode	FAINT	FAINT	On-chip summing requested	N	N
Observation mode	POINTING	POINTING	Subarray requested	NONE	NONE
Pointing RA	67.970621	67.99138944802647	Alternating exposures requested	N	N
Pointing Dec	18.369410	18.35064601415898	Primary exposure time	0.000000	3.2
Pointing Roll	285.465994	285.6160677224732			
SIM focus pos (mm)	-0.684267	-0.6828225247311905			
SIM defocus (mm)	0	0.001444936568705701			
SIM translation stage pos (mm)	-190.132523	-190.1400660498719			
SIM translation stage offset (mm)	0	0.00754346686406393			
Observation start time	220541886.184000	220540890.9447			
Observation start date	2004-12-27T13:37:02	2004-12-27T13:21:30			
Observation end time	220552886.184000	220554008.38279			
Observation end date	2004-12-27T16:40:22	2004-12-27T17:00:08			
Read mode	TIMED	TIMED			

2.3 Aspect



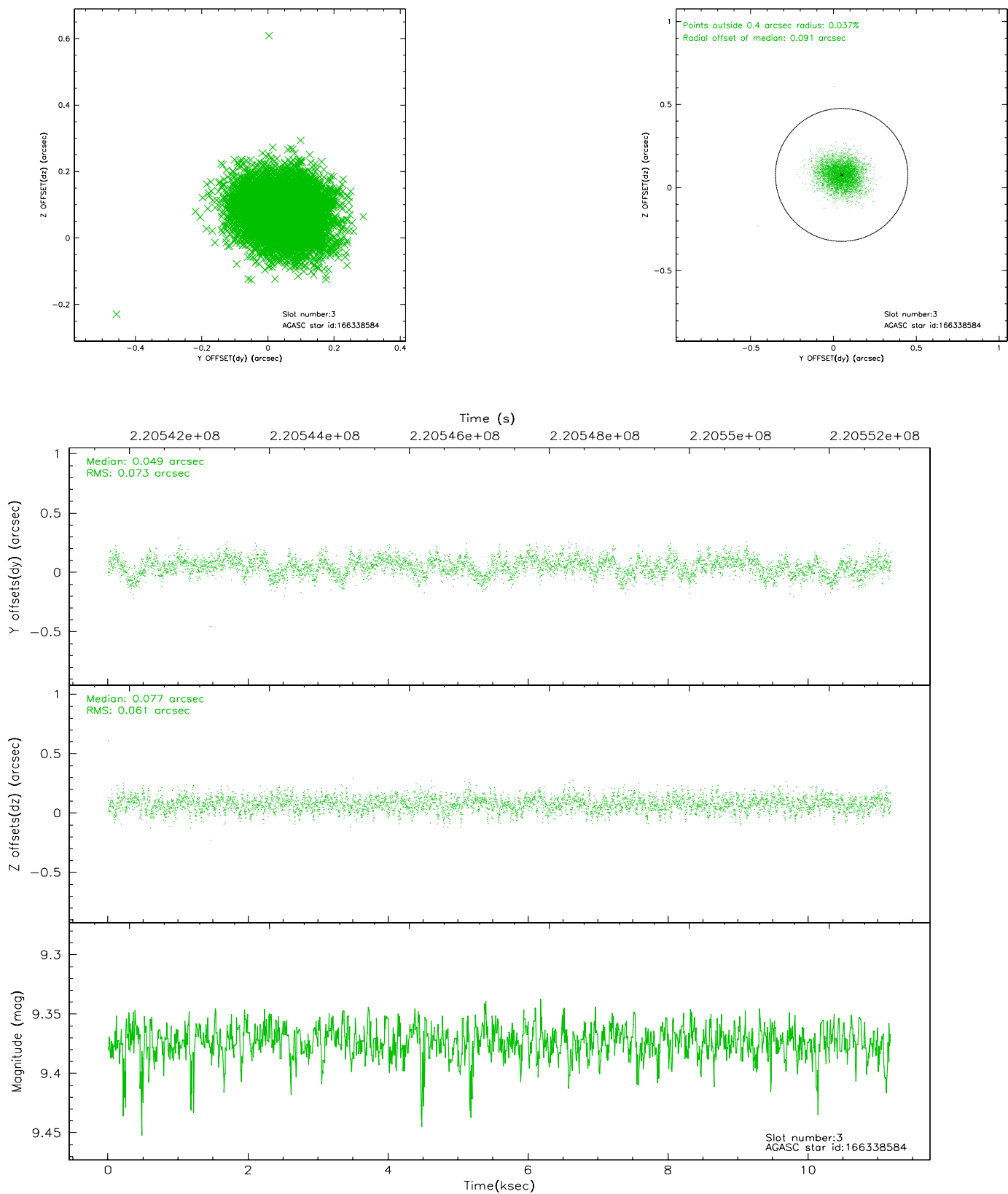


Slot Statistics

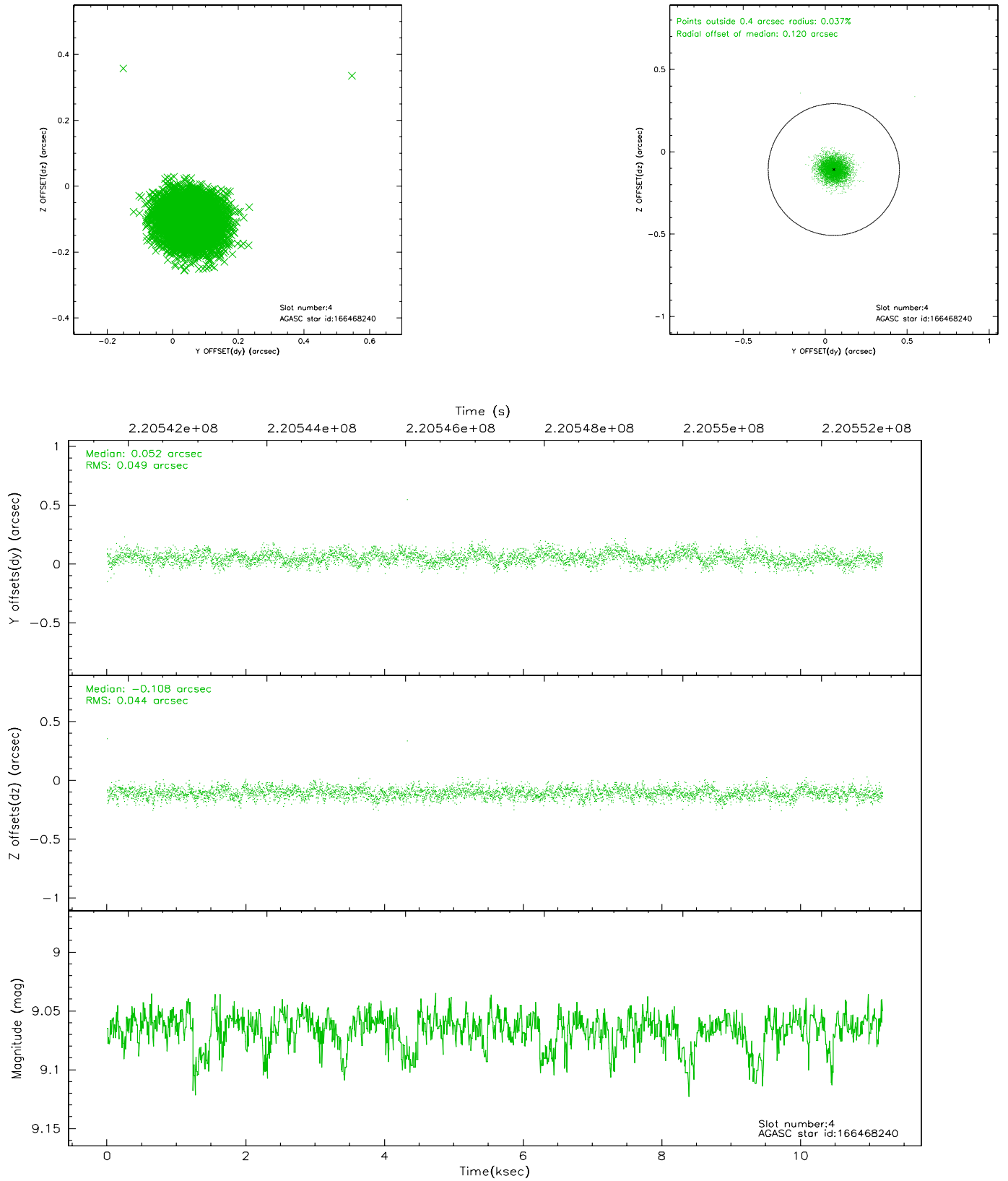
slot	status	id	mag	n_pts	med_dy	med_dz	dr1	dr2	ra	dec	mean_y	mean_z
0	FID	ACIS-S-1	7.18	2729	0.003	0.011	0.009	0.015	0.000000	0.000000	937.09	-1726.37
1	FID	ACIS-S-5	7.24	2729	-0.049	0.007	0.009	0.023	0.000000	0.000000	-1811.69	170.72
2	FID	ACIS-S-6	7.35	2729	0.022	-0.005	0.010	0.021	0.000000	0.000000	402.18	815.17
3	GUIDE	166338584	9.37	5451	0.049	0.077	0.101	0.163	67.904616	17.709782	2228.96	-850.36
4	GUIDE	166468240	9.06	5449	0.052	-0.108	0.069	0.113	68.167699	17.861525	1942.68	163.54
5	GUIDE	166995216	7.92	5458	-0.058	0.028	0.061	0.098	68.200288	18.935370	-1755.21	1297.40
6	GUIDE	166996584	9.14	5452	-0.023	0.001	0.068	0.111	68.020035	18.861675	-1663.27	635.19
7	GUIDE	166334824	7.12	5457	-0.022	0.007	0.066	0.115	67.376458	17.863163	1210.95	-2446.33

2.4 Star Slots

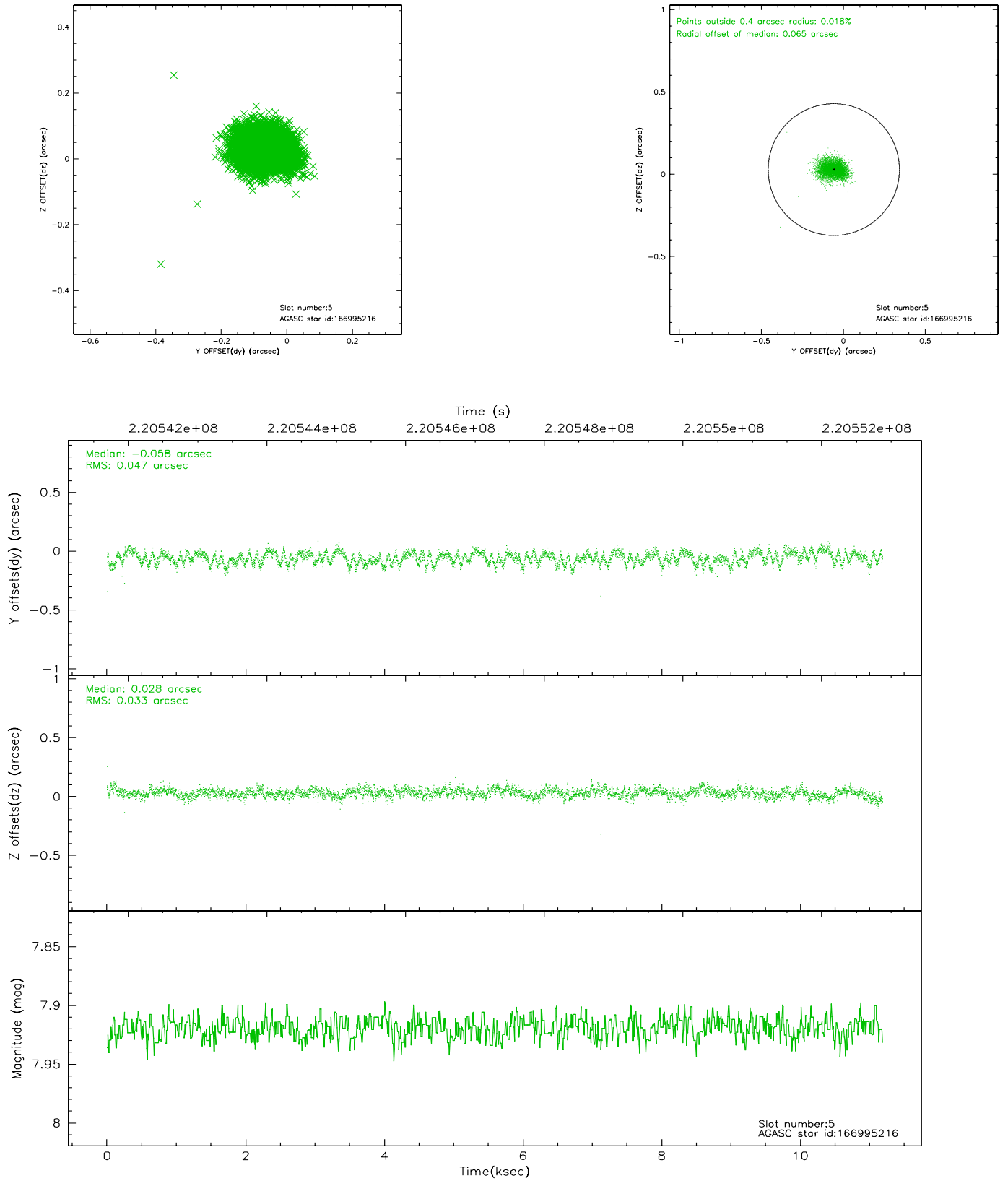
2.4.1 Slot 3



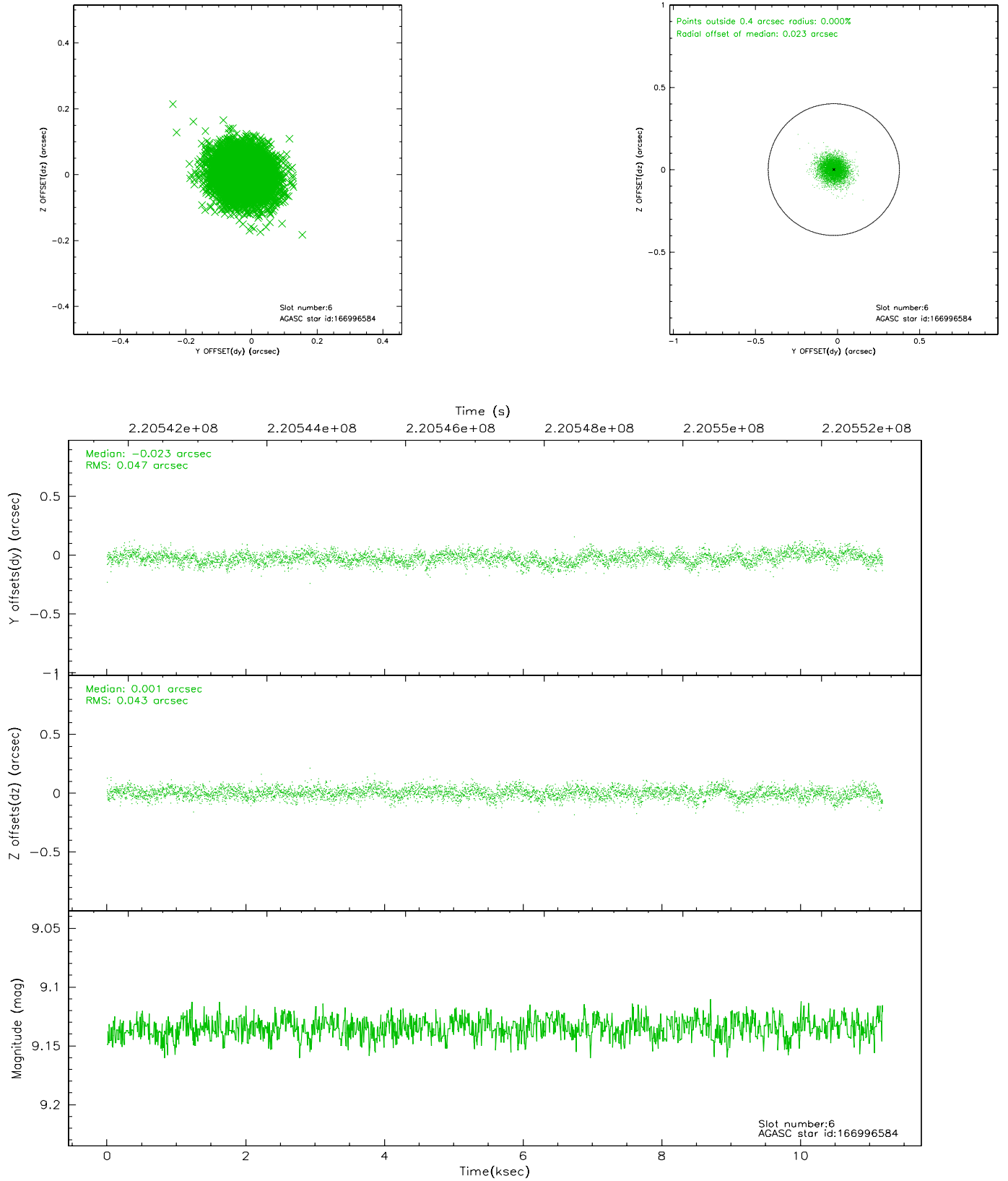
2.4.2 Slot 4



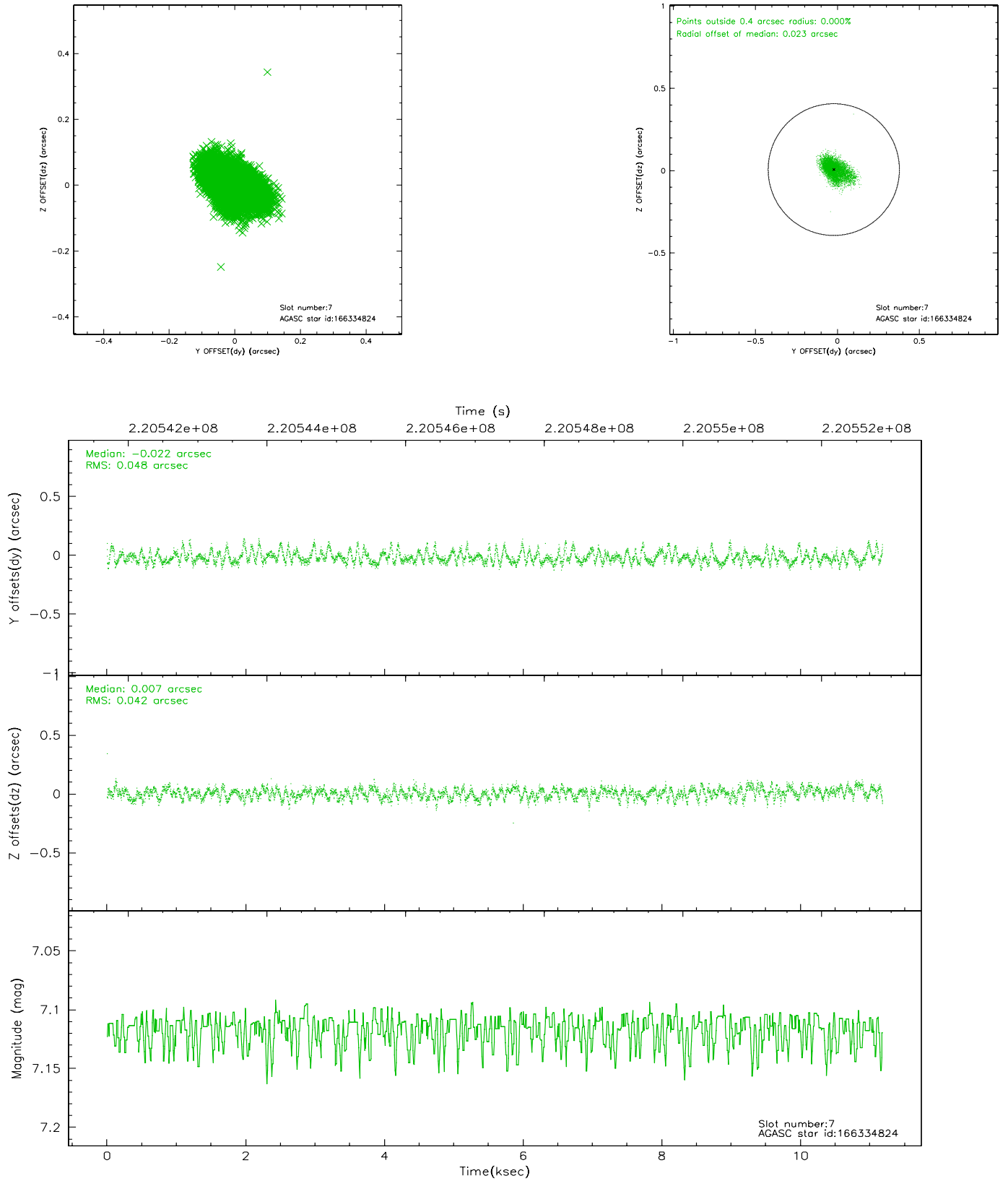
2.4.3 Slot 5



2.4.4 Slot 6

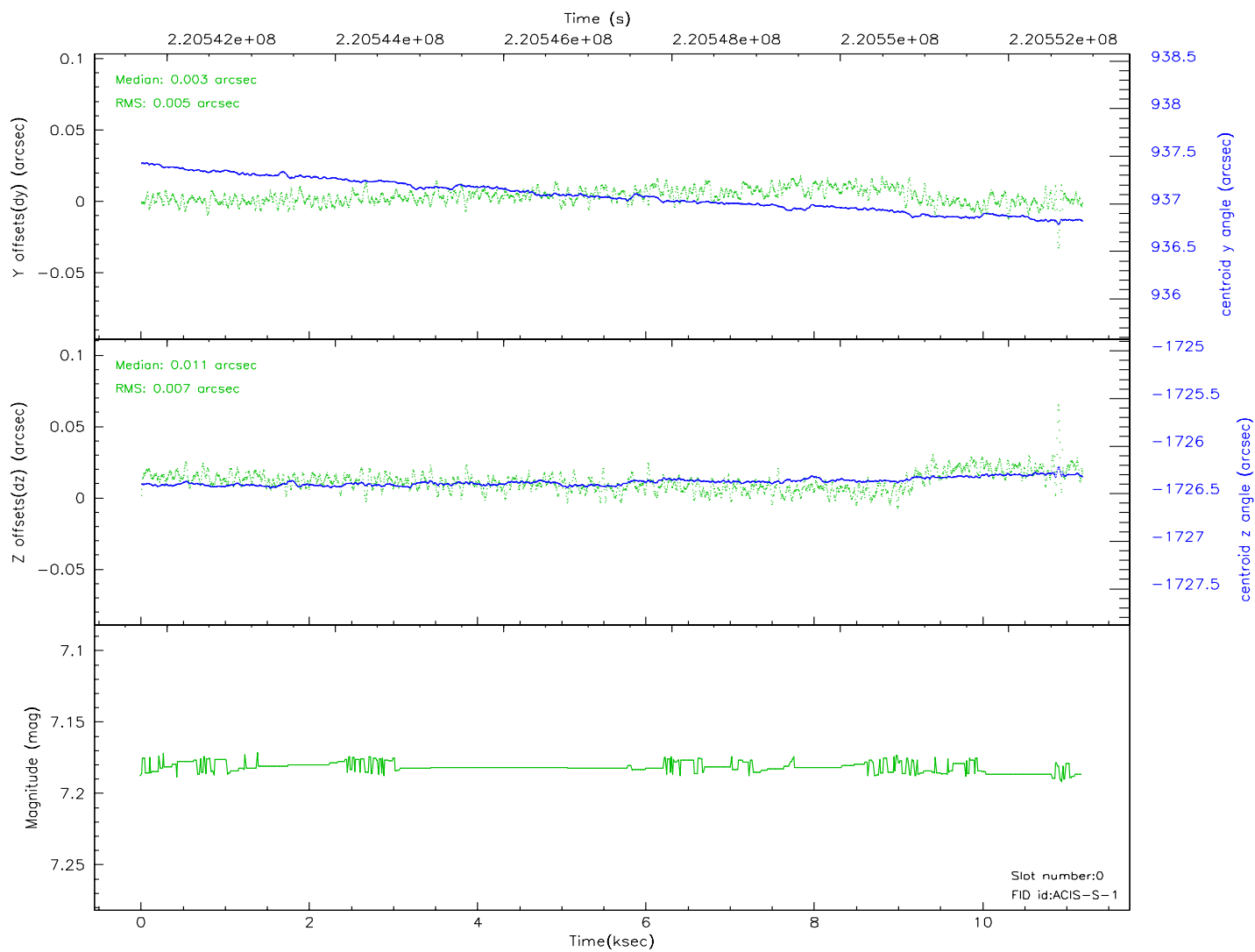
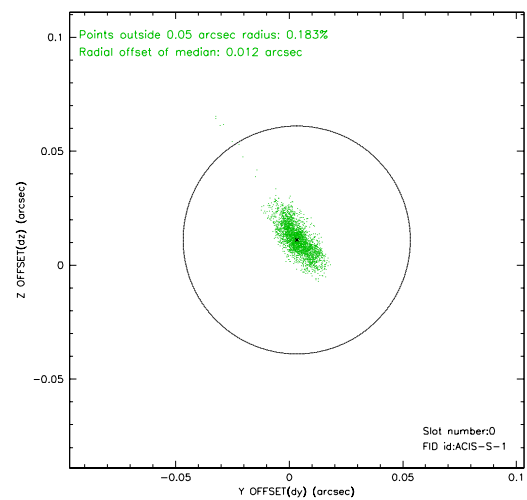
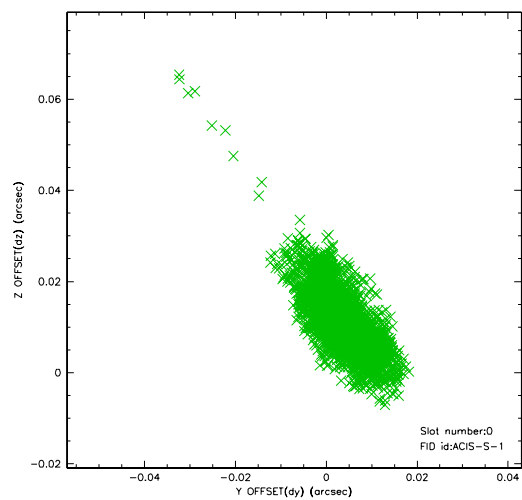


2.4.5 Slot 7

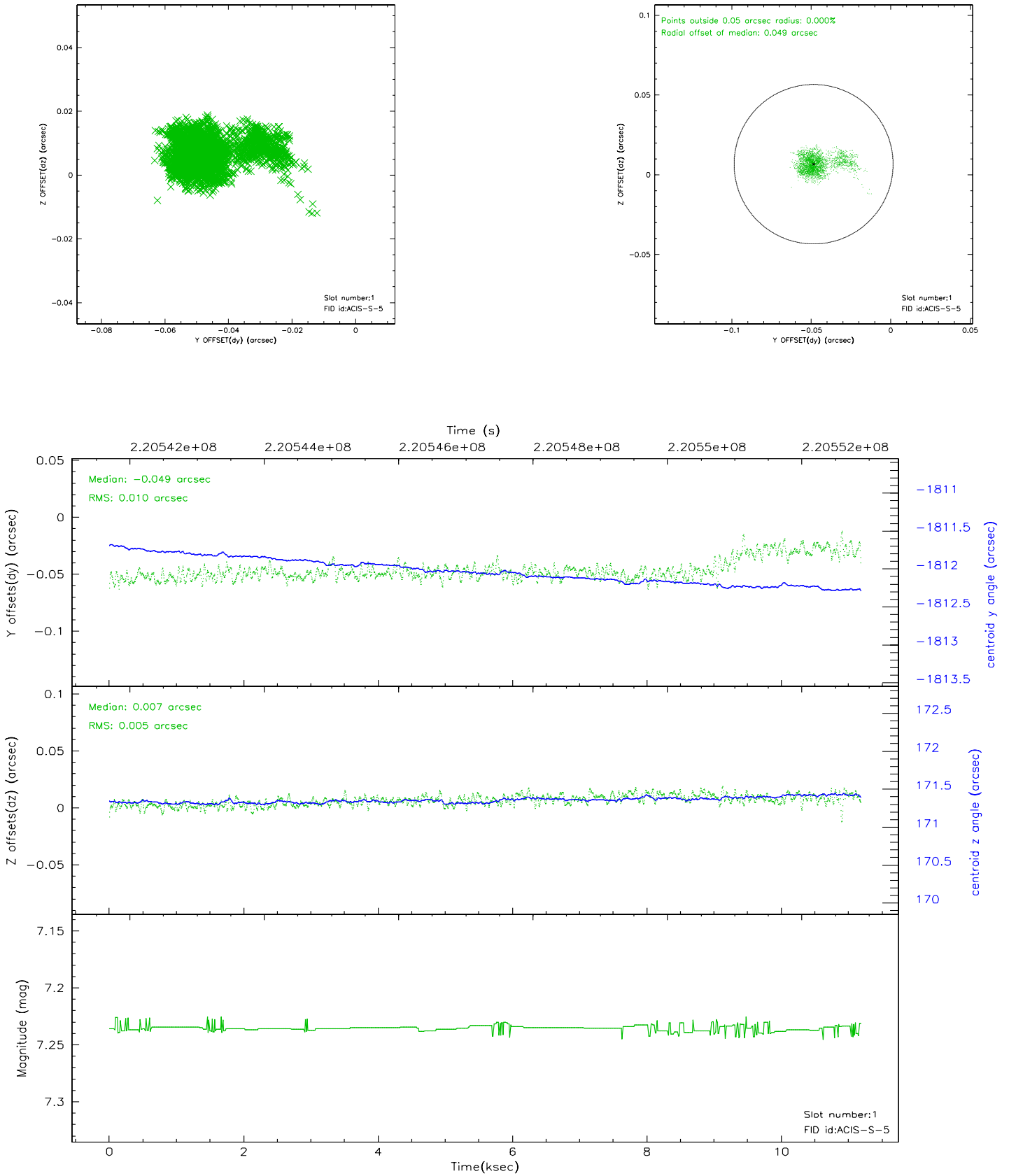


2.5 FID Slots

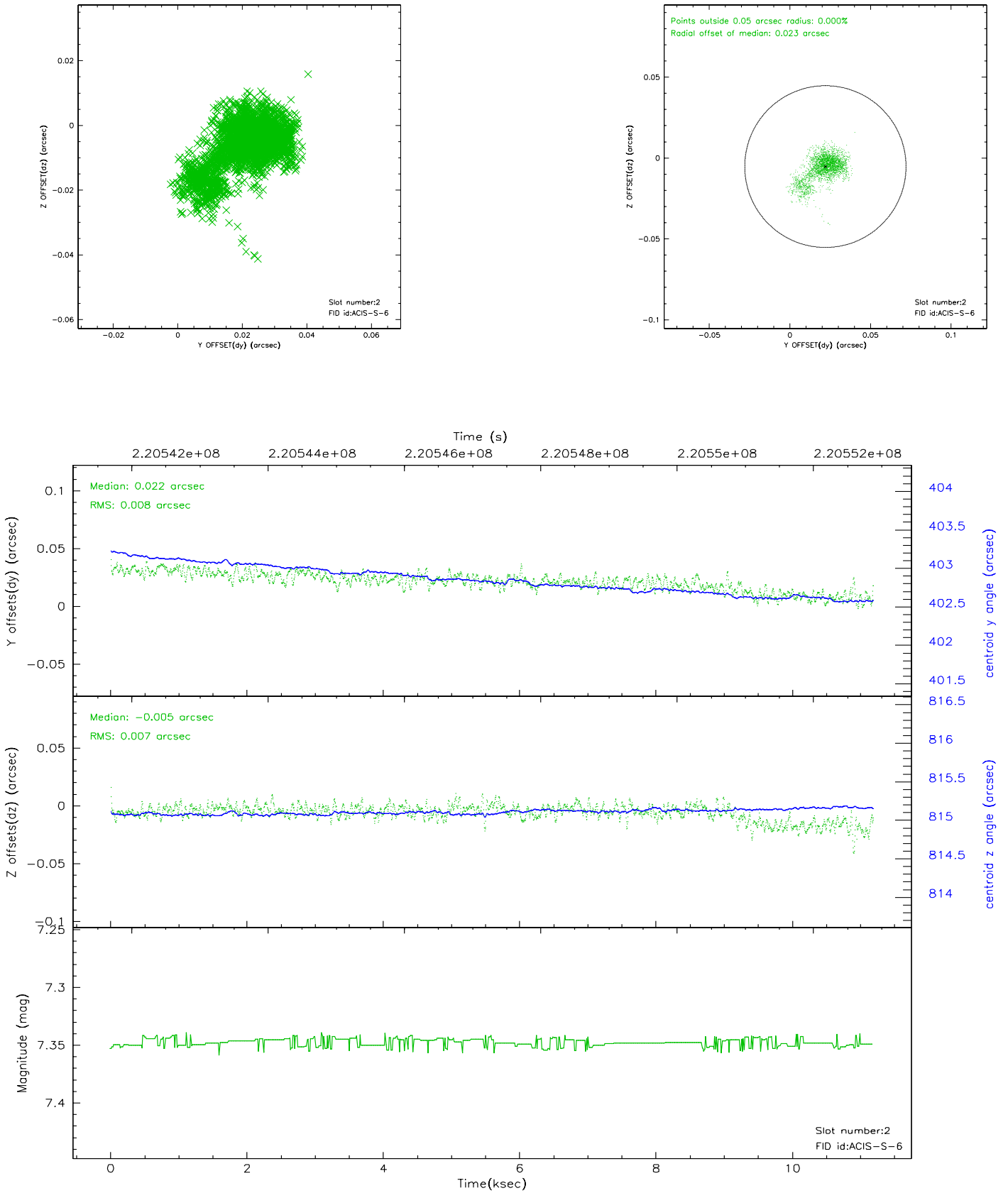
2.5.1 Slot 0



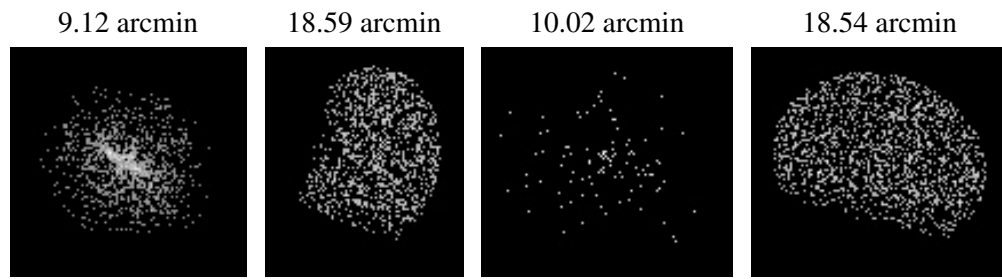
2.5.2 Slot 1



2.5.3 Slot 2



3 Point Sources



A Summary

A.1 Status

V&V Scientist	Beth Sundheim
V&V Date (YYYY-MM-DD)	2006.04.07
V&V Edition	1
V&V Disposition and Status	OK
V&V Charge Time	11.02399

A.2 Comments