

V&V Reference Report

L2 ASCDS Version : 7.6.7.1

Observation 5416 - L2 Version 002
Chandra X-Ray Center

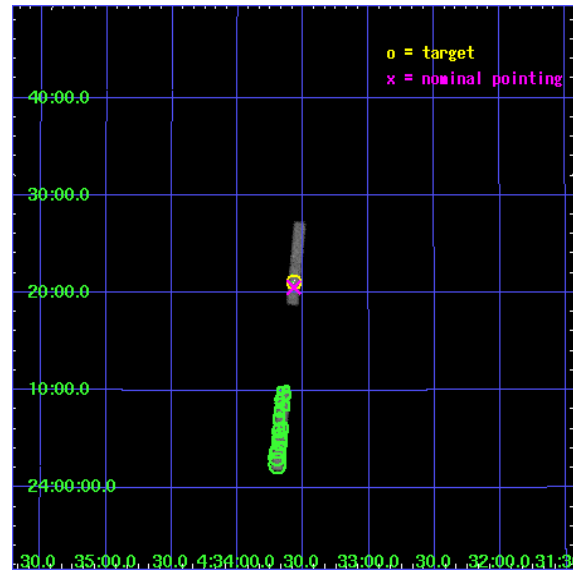
L2 Processing Date : Mar 21 2006

Contents

1	Front	2
2	OBI	3
2.1	OBI	3
2.1.1	Images	3
2.1.2	Bias	3
2.1.3	Parameters	4
2.1.4	Events	4
2.2	Compared Parameters	5
2.3	Aspect	6
2.4	Star Slots	9
2.4.1	Slot 3	9
2.4.2	Slot 4	10
2.4.3	Slot 5	11
2.4.4	Slot 6	12
2.5	FID Slots	13
2.5.1	Slot 0	13
2.5.2	Slot 1	14
2.5.3	Slot 2	15
3	Point Sources	16
A	Summary	17
A.1	Status	17
A.2	Comments	17

1 Front

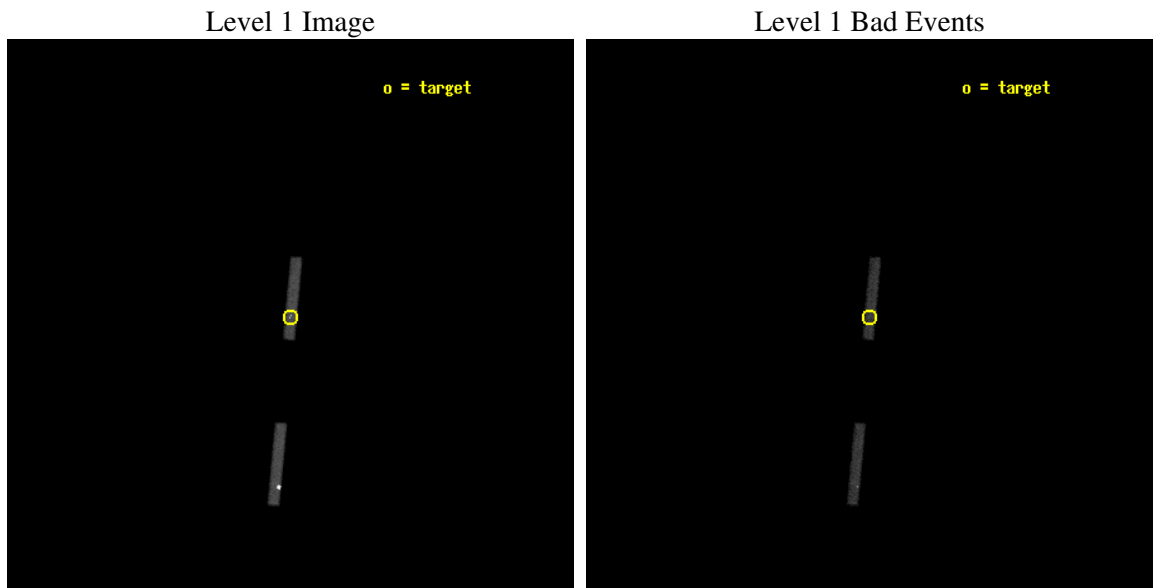
seq_num	200349
obs_id	5416
title	Untangling the Accretion Spots on Classical T Tauri Stars
observer	Dr. Andisheh Mahdavi
object	GK Tau
dtcycle	0
cycle	P
ra_targ	68.39375
dec_targ	24.3525
ra_nom	68.392881391186
dec_nom	24.342883618514
roll_nom	275.36059643593
revision	2
ontime	15028.0
livetime	13888.067425699
ontime5	15028.0
ontime7	15028.0
l2events	17830



2 OBI

2.1 OBI

2.1.1 Images



2.1.2 Bias

Chip 5

Chip 7



2.1.3 Parameters

obi_num	0
ascdsver	7.6.7.1
caldbver	3.2.1
date	2006-03-21T16:17:09
revision	2

sched_exp_time	15000.000000
ontime	15183.064684361
ontime5	15183.064684361
ontime7	15183.064684361
l1events	65908

2.1.4 Events

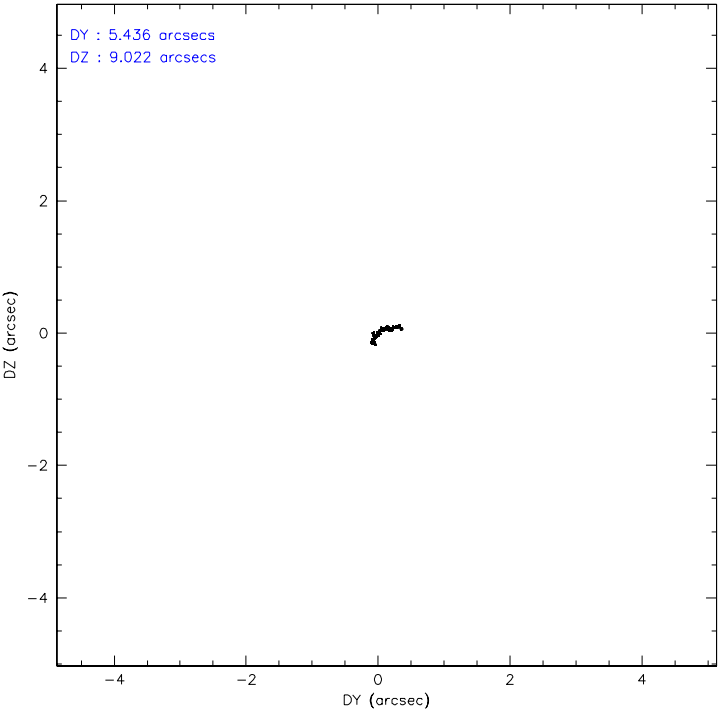
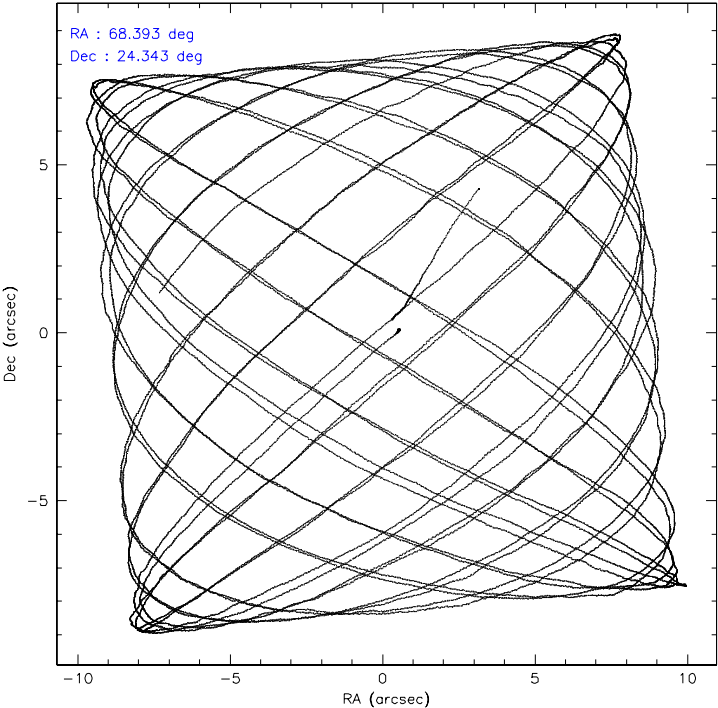
	ccd 5	ccd 7
level 1 events	45409	20499
rejected events	10930	10744
rejected %	24%	52%

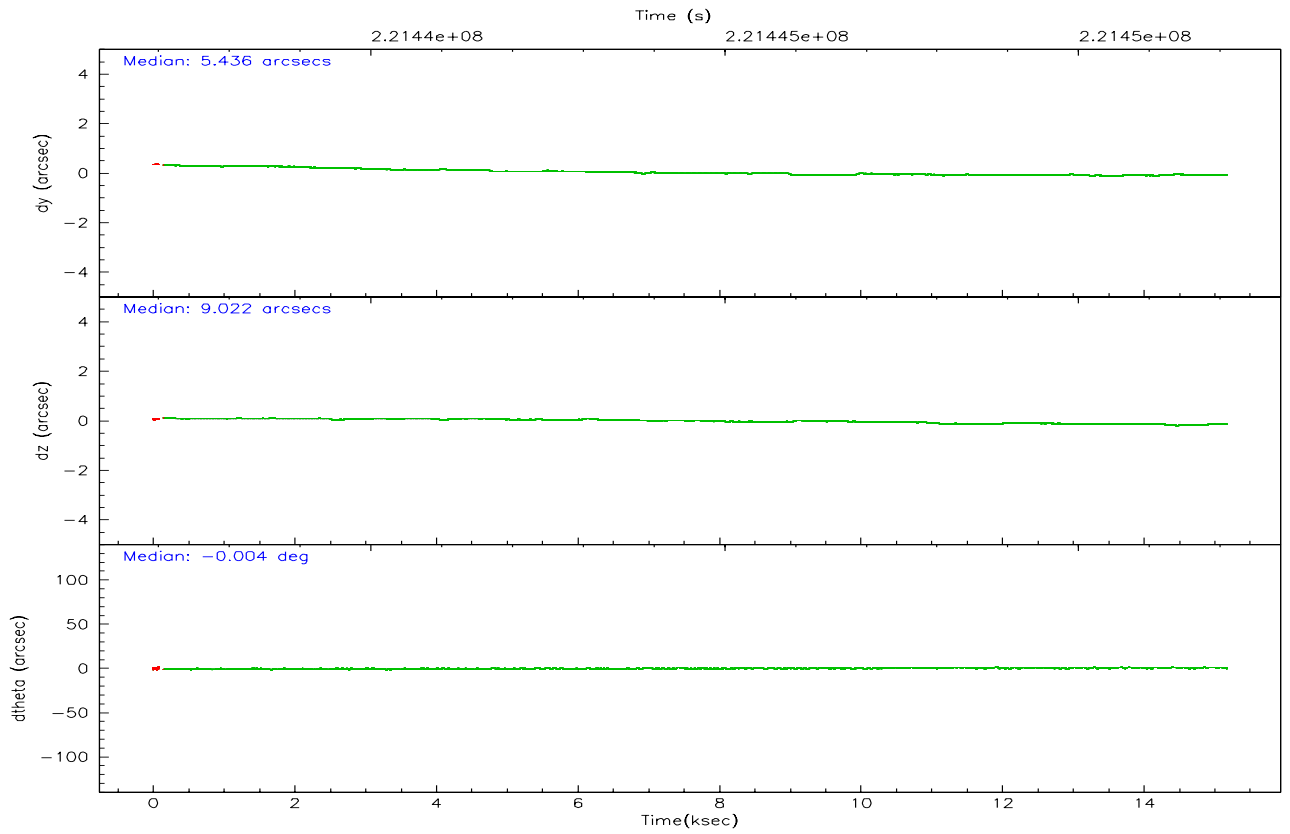
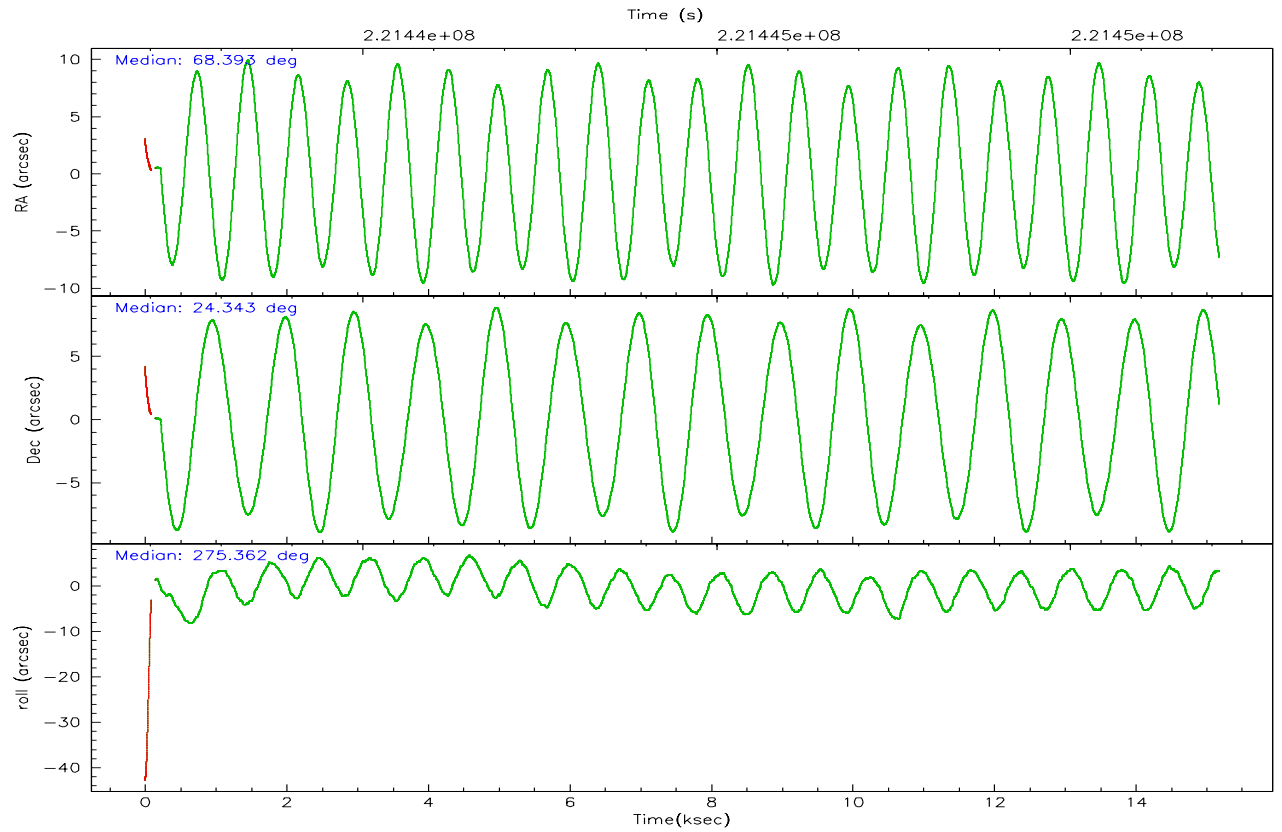
	ccd 5	ccd 7
grade 0 events	24563	1123
	54%	5%
grade 1 events	62	18
	0%	0%
grade 2 events	4434	2410
	9%	11%
grade 3 events	502	1003
	1%	4%
grade 4 events	603	926
	1%	4%
grade 5 events	1059	1314
	2%	6%
grade 6 events	4736	4413
	10%	21%
grade 7 events	9450	9292
	20%	45%

2.2 Compared Parameters

Parameter	Planned	Actual	Parameter	Planned	Actual
Instrument	ACIS	ACIS	Obspar format version number	6	6
Detector	ACIS-57	ACIS-57	Obspar file type	PREDICTED	ACTUAL
Grating	NONE	NONE	Obspar update status	NONE	UPDATED
Data mode	FAINT	FAINT	On-chip summing requested	N	N
Observation mode	POINTING	POINTING	Subarray requested	1/8	1/8
Pointing RA	68.375245	68.3928813911857	Subarray start row	0	449
Pointing Dec	24.364853	24.34288361851386	Subarray row count	1024	128
Pointing Roll	275.211273	275.360596435933	Alternating exposures requested	N	N
SIM focus pos (mm)	-0.684267	-0.6828225247311905	Primary exposure time	0.000000	0.5
SIM defocus (mm)	0	0.001444936568705701			
SIM translation stage pos (mm)	-190.132523	-190.1400660498719			
SIM translation stage offset (mm)	0	0.00754346686406393			
Observation start time	221437103.184000	221436379.67256			
Observation start date	2005-01-06T22:17:19	2005-01-06T22:06:19			
Observation end time	221452103.184000	221452928.29831			
Observation end date	2005-01-07T02:27:19	2005-01-07T02:42:08			
Read mode	TIMED	TIMED			

2.3 Aspect



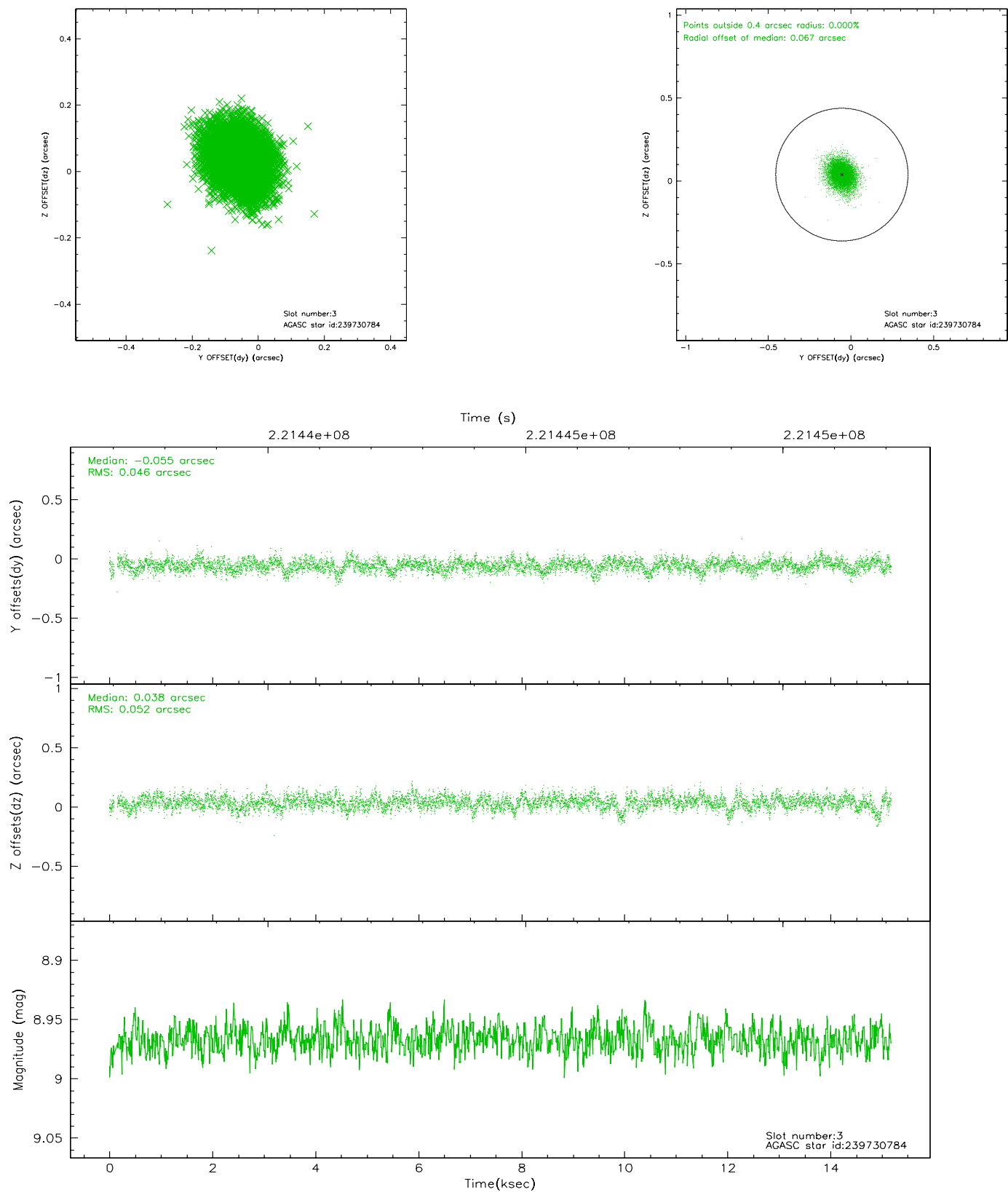


Slot Statistics

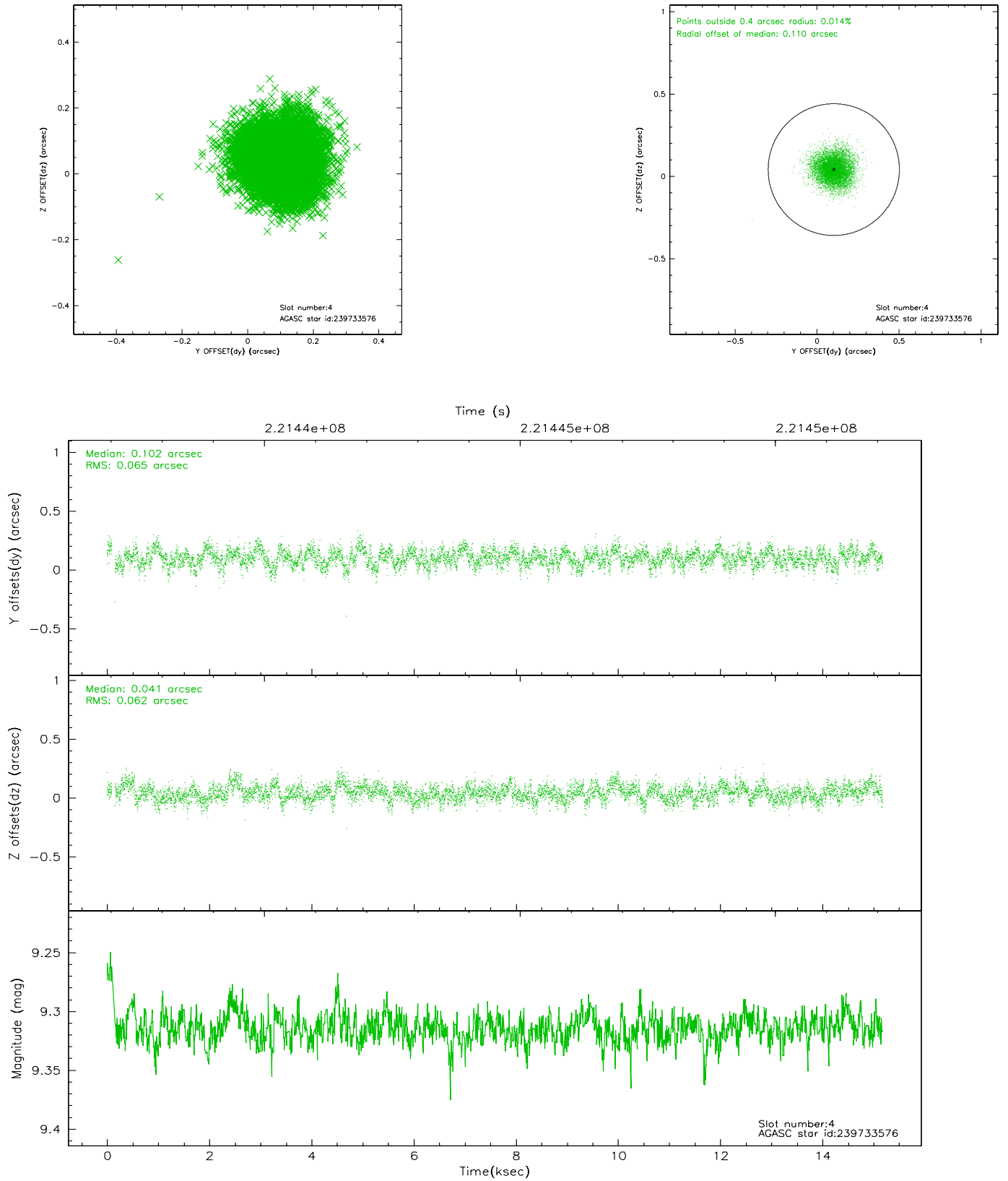
slot	status	id	mag	n_pts	med_dy	med_dz	dr1	dr2	ra	dec	mean_y	mean_z
0	FID	ACIS-S-2	7.10	3688	-0.049	-0.031	0.007	0.011	0.000000	0.000000	-758.24	-1730.26
1	FID	ACIS-S-4	7.21	3687	0.074	0.032	0.005	0.010	0.000000	0.000000	2155.02	177.98
2	FID	ACIS-S-5	7.23	3687	-0.057	0.008	0.007	0.011	0.000000	0.000000	-1810.71	171.96
3	GUIDE	239730784	8.97	7371	-0.055	0.038	0.072	0.122	68.709044	24.244524	529.72	1052.20
4	GUIDE	239733576	9.31	7369	0.102	0.041	0.096	0.154	68.994910	23.821766	2128.34	1855.40
5	GUIDE	240255024	9.20	7375	0.015	-0.114	0.090	0.145	68.465897	24.501998	-464.15	340.91
6	GUIDE	240263016	8.65	7375	-0.058	0.037	0.058	0.097	68.575597	24.979042	-2143.11	852.29
7	MONITOR		0.00	0	0.000	0.000	0.000	0.000	0.000000	0.000000	0.00	0.00

2.4 Star Slots

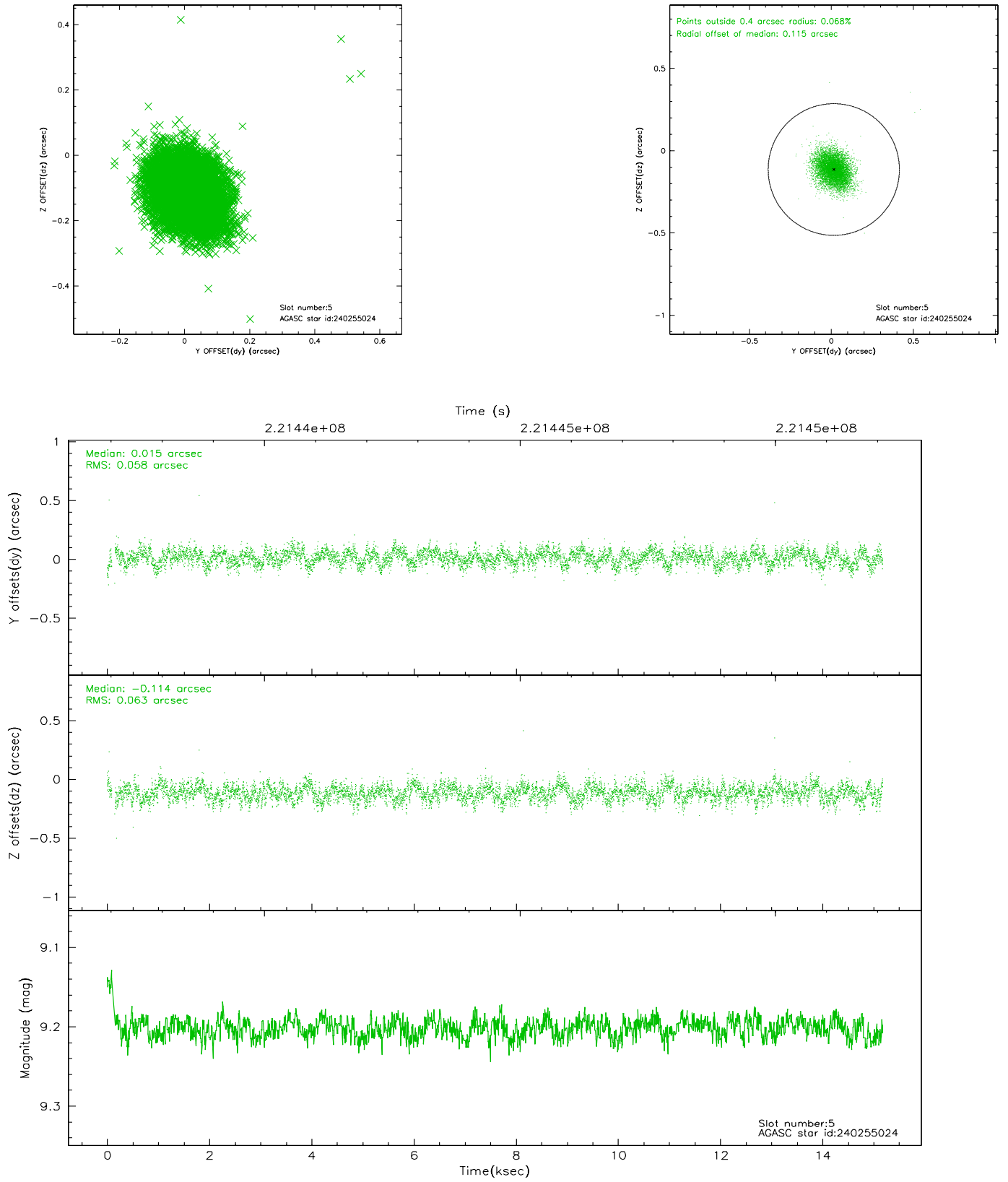
2.4.1 Slot 3



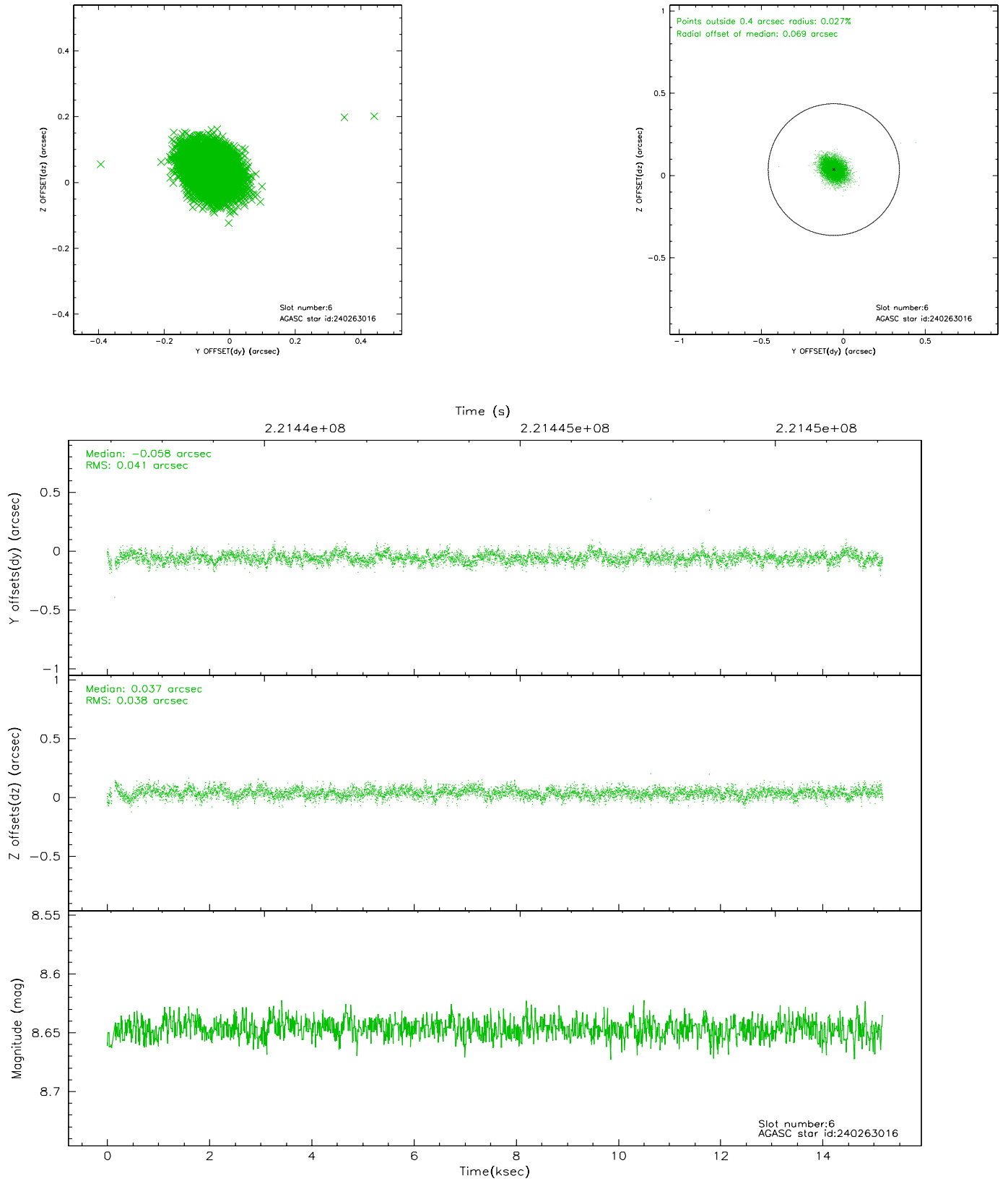
2.4.2 Slot 4



2.4.3 Slot 5

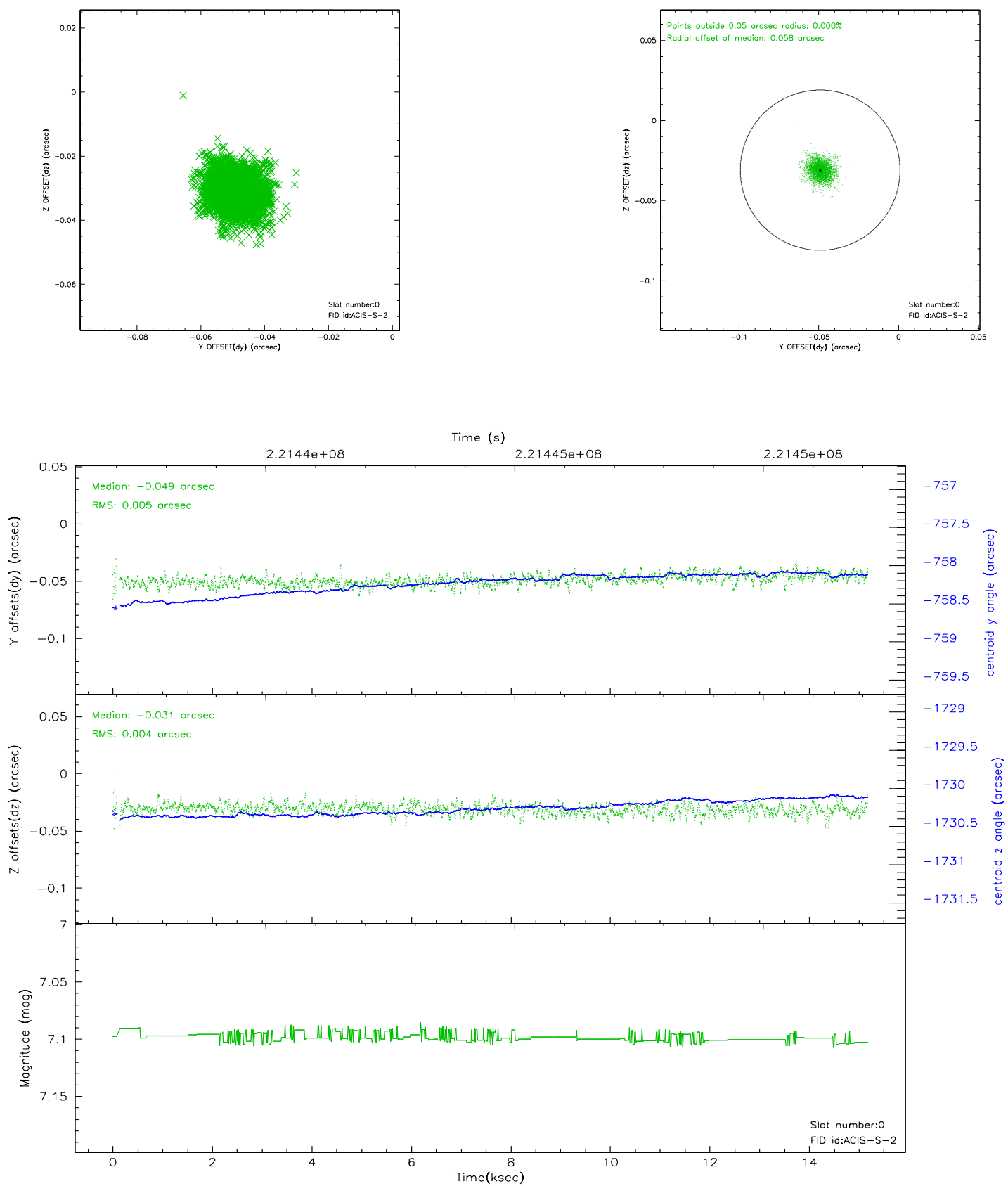


2.4.4 Slot 6

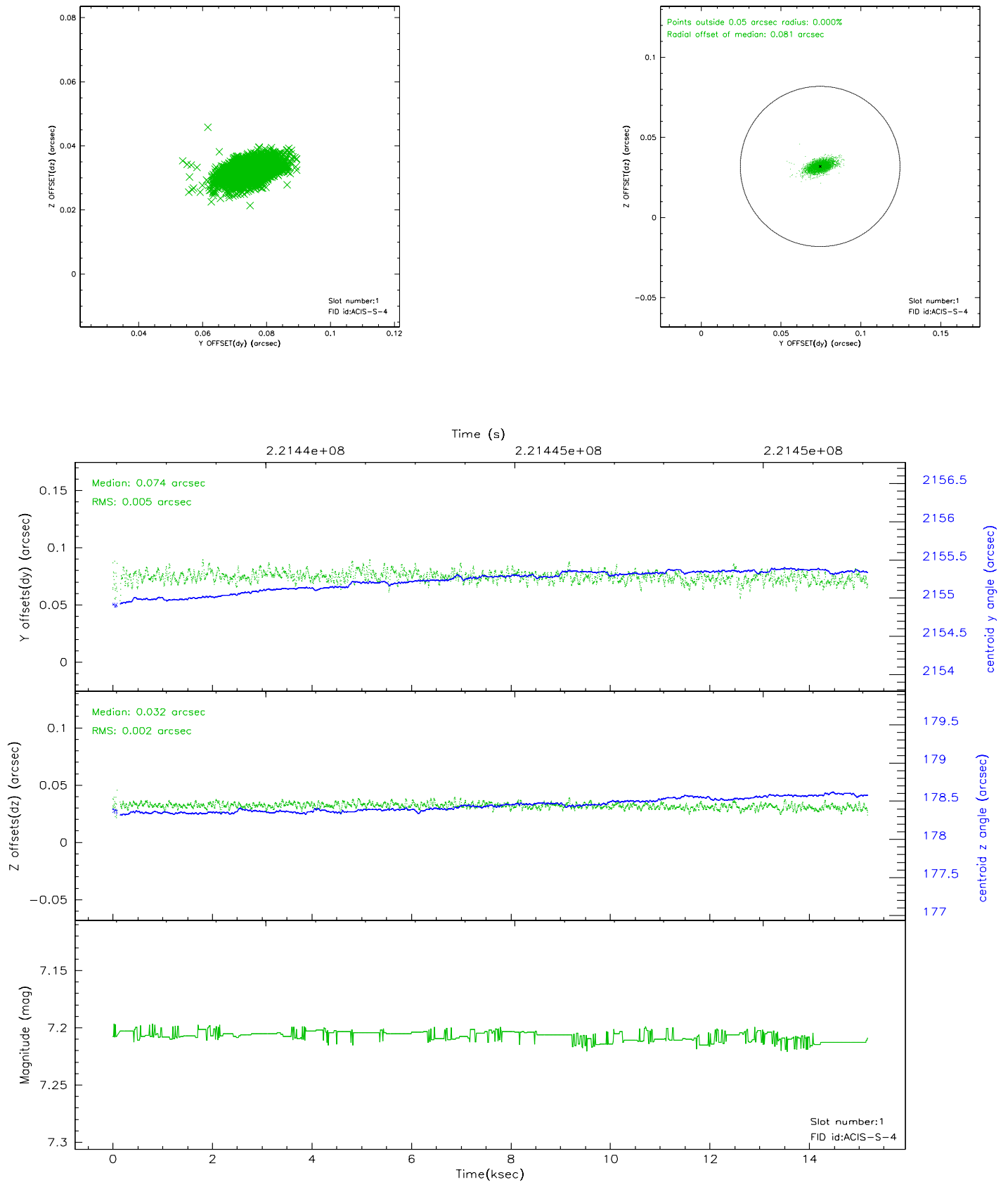


2.5 FID Slots

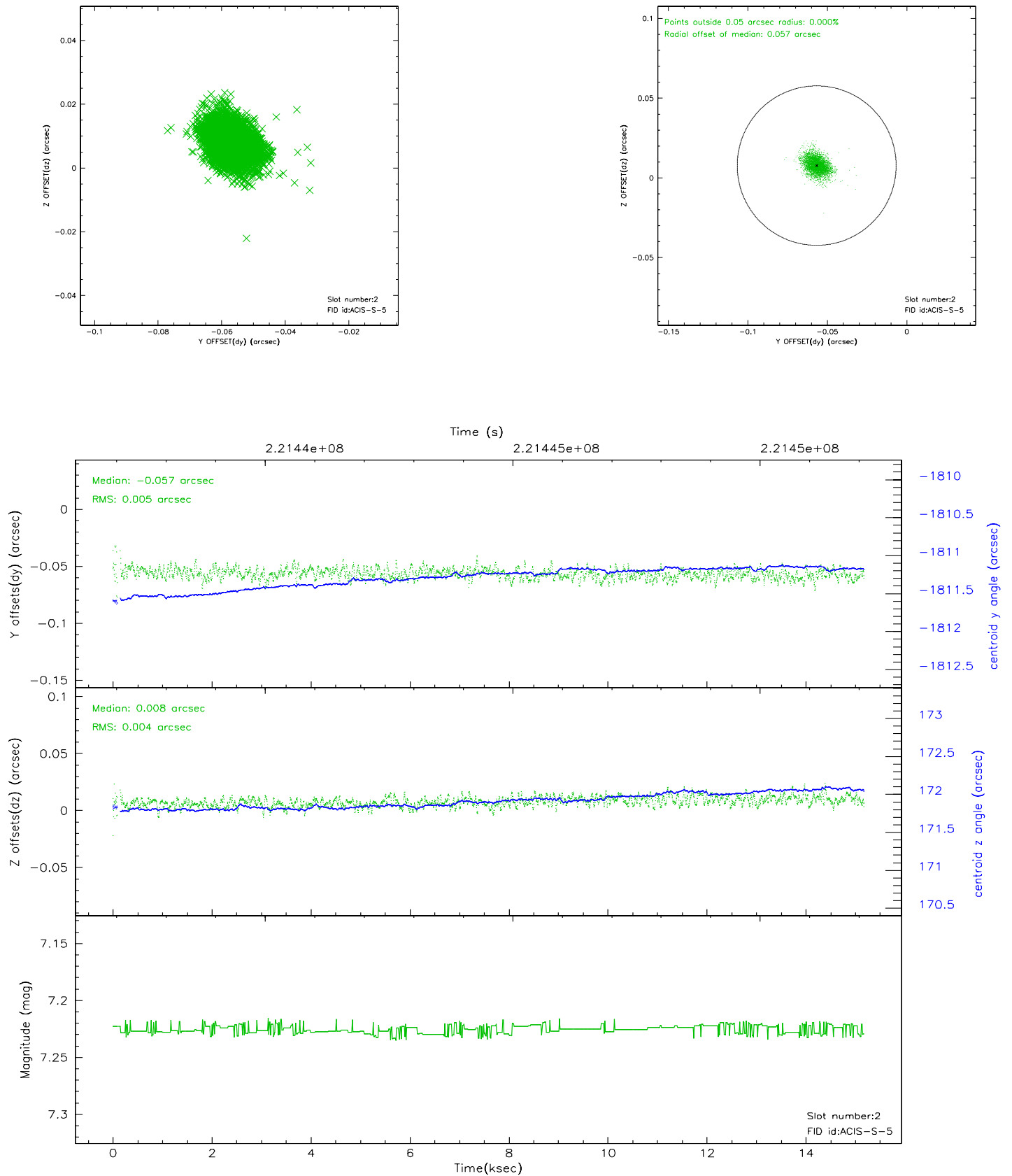
2.5.1 Slot 0



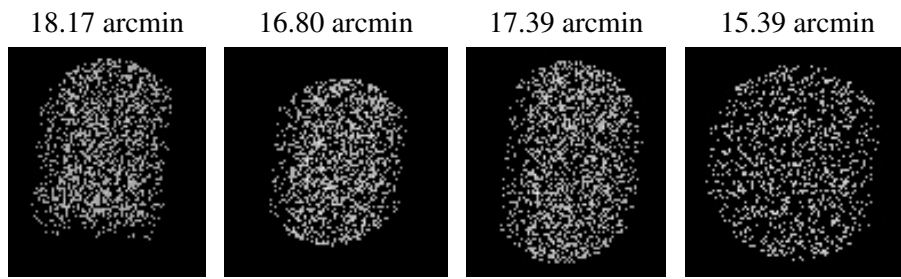
2.5.2 Slot 1



2.5.3 Slot 2



3 Point Sources



A Summary

A.1 Status

V&V Scientist	Jen Lauer
V&V Date (YYYY-MM-DD)	2006.03.21
V&V Edition	1
V&V Disposition and Status	OK
V&V Charge Time	15.028

A.2 Comments

Monitor constraint met.