

V&V Reference Report

L2 ASCDS Version : 8.5.1.1

Observation 5387 - L2 Version 3
Chandra X-Ray Center

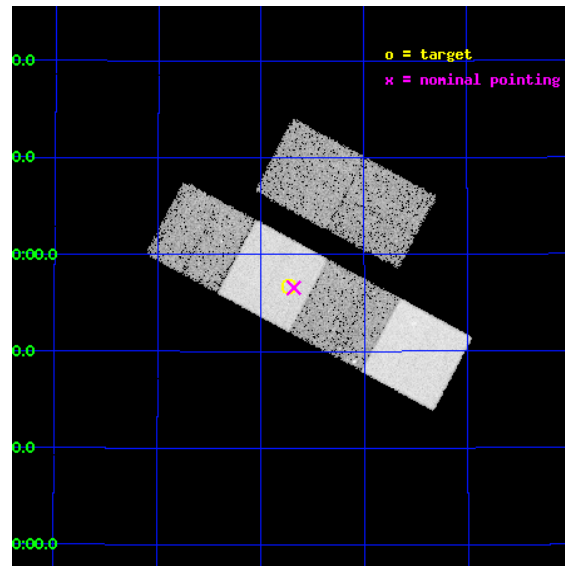
L2 Processing Date : Dec 27 2012

Contents

1	Front	2
2	OBI	3
2.1	OBI	3
2.1.1	Images	3
2.1.2	Bias	3
2.1.3	Parameters	4
2.1.4	Events	4
2.2	Compared Parameters	5
2.3	Aspect	6
2.4	Star Slots	9
2.4.1	Slot 3	9
2.4.2	Slot 4	10
2.4.3	Slot 5	11
2.4.4	Slot 6	12
2.4.5	Slot 7	13
2.5	FID Slots	14
2.5.1	Slot 0	14
2.5.2	Slot 1	15
2.5.3	Slot 2	16
A	Summary	17
A.1	Status	17
A.2	Comments	17

1 Front

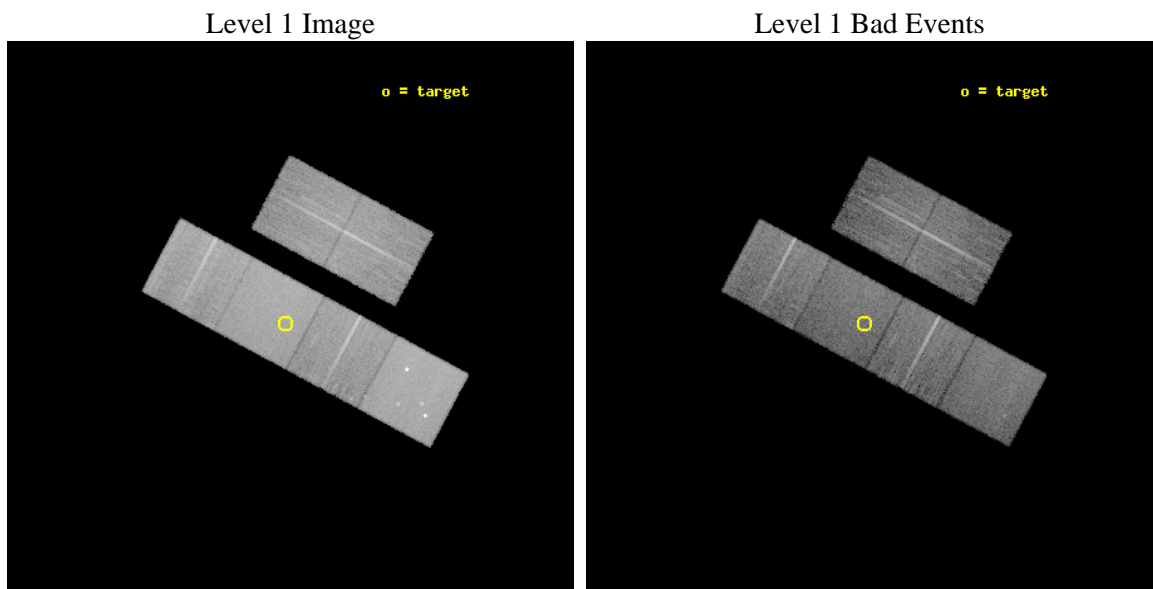
seq_num	200322	Sequence number
obs_id	5387	Observation id
title	The puzzle of X-ray emission from magnetic stars without convective envelopes	Proposal title
observer	Prof. Jurgen Schmitt	Principal investigator
object	HD 184905	Source name
dtcycle	0	
cycle	P	events from which exps? Prim/Second/Both
ra_targ	293.682917	Observer's specified target RA [deg]
dec_targ	43.945861	Observer's specified target Dec [deg]
ra_nom	293.67013589112	Nominal RA [deg]
dec_nom	43.942870523604	Nominal Dec [deg]
roll_nom	208.14896014027	Nominal Roll [deg]
revision	3	Processing version of data
ontime	15155.199943542	Sum of GTIs [s]
livetime	14963.295676492	Livetime [s]
ontime2	15155.199943542	Sum of GTIs [s]
ontime3	15155.199943542	Sum of GTIs [s]
ontime5	15155.199943542	Sum of GTIs [s]
ontime6	15155.199943542	Sum of GTIs [s]
ontime7	15155.199943542	Sum of GTIs [s]
ontime8	15155.199943542	Sum of GTIs [s]
l2events	173775	Number of level 2 events



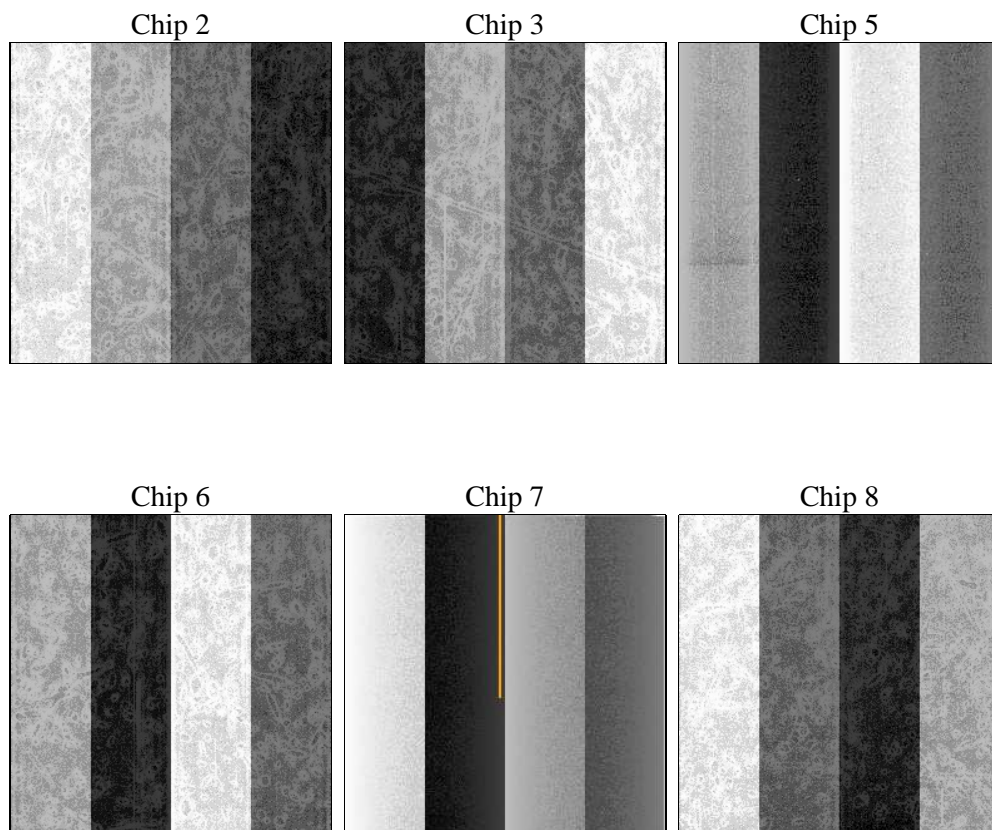
2 OBI

2.1 OBI

2.1.1 Images



2.1.2 Bias



2.1.3 Parameters

obi_num	0	Obi number	sched_exp_time	15000.000000	[s] Scheduled observation exposure time
ascdsver	8.5.1.1	Processing system revision	ontime	15155.199943542	Sum of GTIs [s]
caldsver	4.5.5	 	ontime2	15155.199943542	Sum of GTIs [s]
date	2012-12-27T04:22:53	Date and time of file creation	ontime3	15155.199943542	Sum of GTIs [s]
revision	3	Processing version of data	ontime5	15155.199943542	Sum of GTIs [s]
			ontime6	15155.199943542	Sum of GTIs [s]
			ontime7	15155.199943542	Sum of GTIs [s]
			ontime8	15155.199943542	Sum of GTIs [s]
			l1events	776262	Number of level 1 events

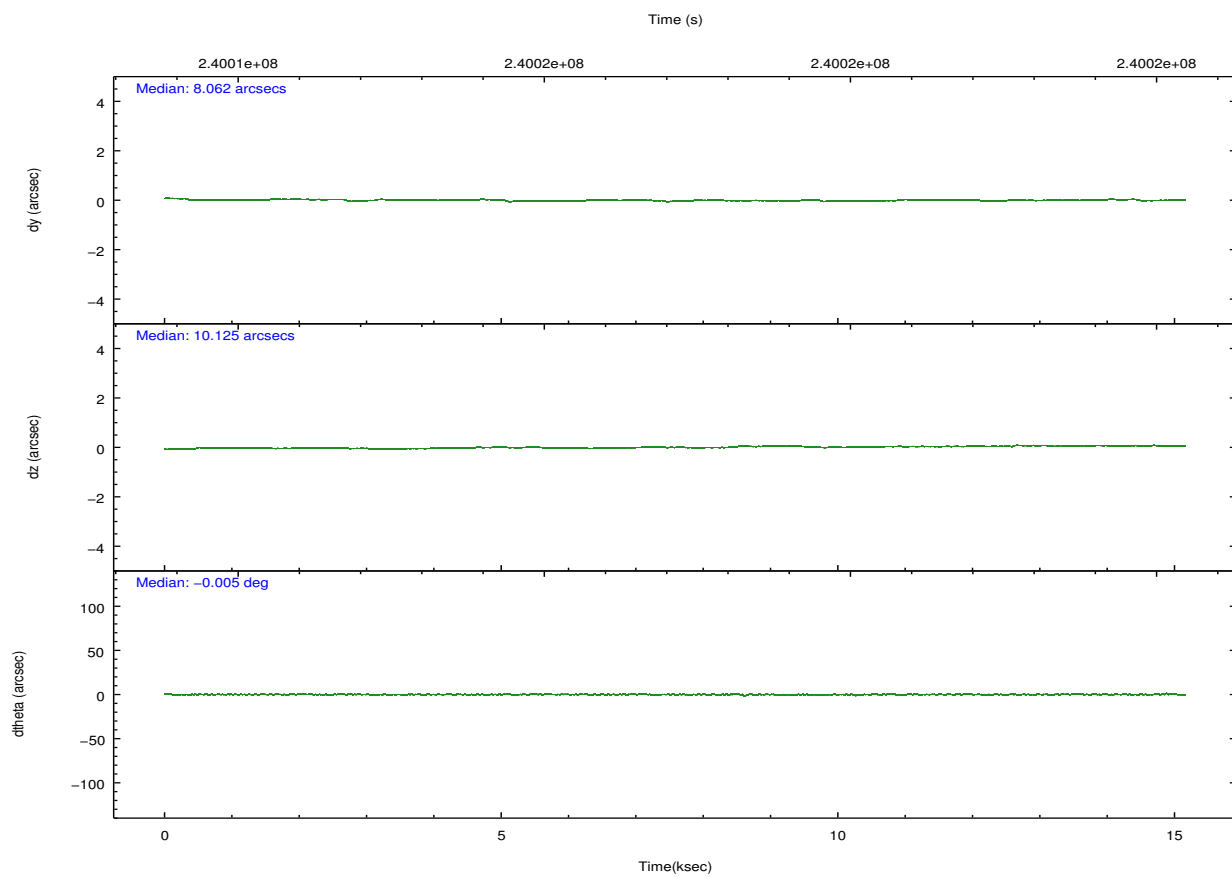
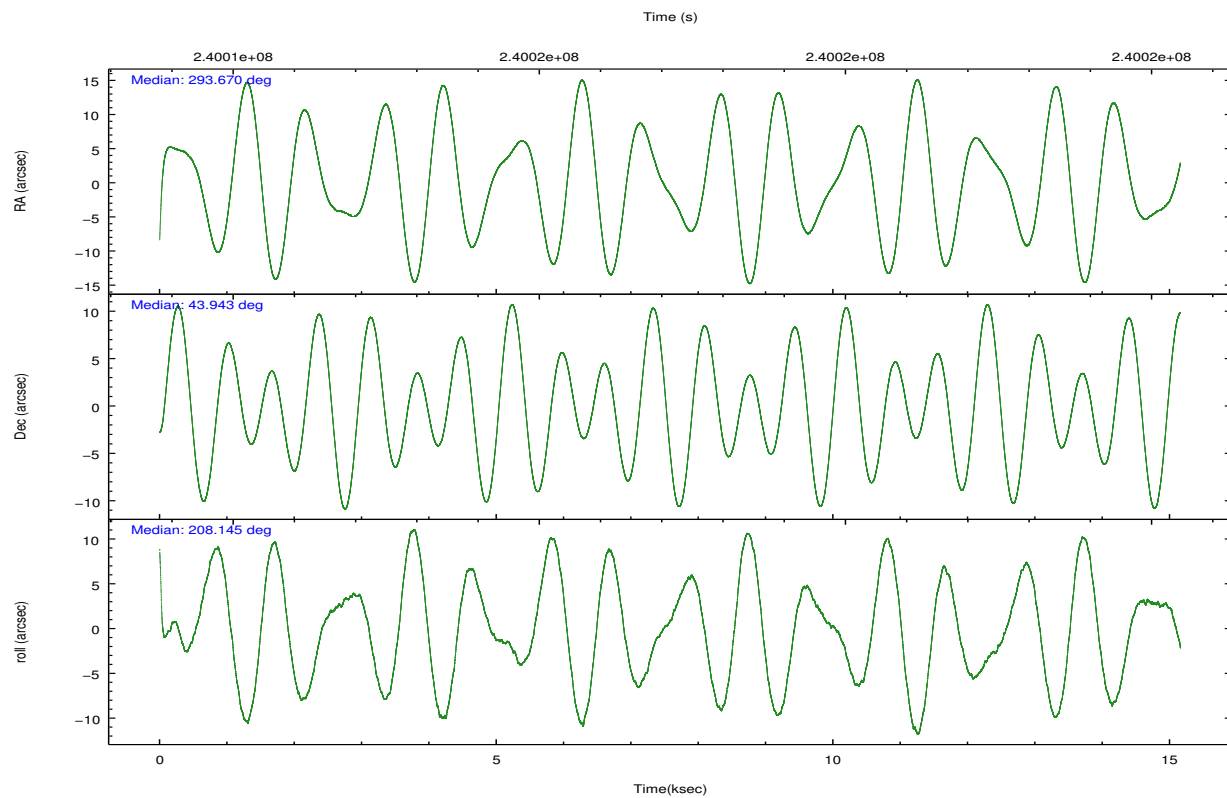
2.1.4 Events

	ccd 2	ccd 3	ccd 5	ccd 6	ccd 7	ccd 8		ccd 2	ccd 3	ccd 5	ccd 6	ccd 7	ccd 8
level 1 events	109303	101314	168587	108987	149081	138990	grade 0 events	5585	5379	12020	5369	5464	9186
rejected events	96834	88856	89266	95649	88633	110154		5%	5%	7%	4%	3%	6%
rejected %	88%	87%	52%	87%	59%	79%	grade 1 events	59	72	397	38	142	104
								0%	0%	0%	0%	0%	0%
							grade 2 events	2520	2417	23131	2840	12135	6388
								2%	2%	13%	2%	8%	4%
							grade 3 events	1180	1222	2816	1264	5383	2986
								1%	1%	1%	1%	3%	2%
							grade 4 events	1120	1269	2812	1247	5374	2710
								1%	1%	1%	1%	3%	1%
							grade 5 events	4312	5004	11836	5165	14385	6726
								3%	4%	7%	4%	9%	4%
							grade 6 events	2160	2291	39224	2747	32596	7873
								1%	2%	23%	2%	21%	5%
							grade 7 events	92367	83660	76351	90317	73602	103017
								84%	82%	45%	82%	49%	74%

2.2 Compared Parameters

Parameter	Planned	Actual	Parameter	Planned	Actual
Instrument	ACIS	ACIS	Obspar format version number	7	7
Detector	ACIS-235678	ACIS-235678	Obspar file type	PREDICTED	ACTUAL
Grating	NONE	NONE	Obspar update status	NONE	UPDATED
Data mode	FAINT	FAINT	Number of optional ACIS chips dropped	0	0
Observation mode	POINTING	POINTING	On-chip summing requested	N	N
[deg] Pointing RA	293.689676	293.6701358911185	Subarray requested	NONE	NONE
[deg] Pointing Dec	43.966185	43.94287052360351	Alternating exposures requested	N	N
[deg] Pointing Roll	207.978761	208.1489601402657	[s] Primary exposure time	0.000000	3.2
[mm] SIM focus pos	-0.684267	-0.6828225247311905			
[mm] SIM defocus	0	0.001444936568705701			
[mm] SIM translation stage pos	-190.132523	-190.145094680475			
[mm] SIM translation stage offset	0	0.01257209746719923			
[s] Observation start time (MET)	240009715.184000	240008450.32967			
Observation start date	2005-08-09T21:20:51	2005-08-09T21:00:50			
[s] Observation end time (MET)	240024715.184000	240026305.31798			
Observation end date	2005-08-10T01:30:51	2005-08-10T01:58:25			
Read mode	TIMED	TIMED			

2.3 Aspect

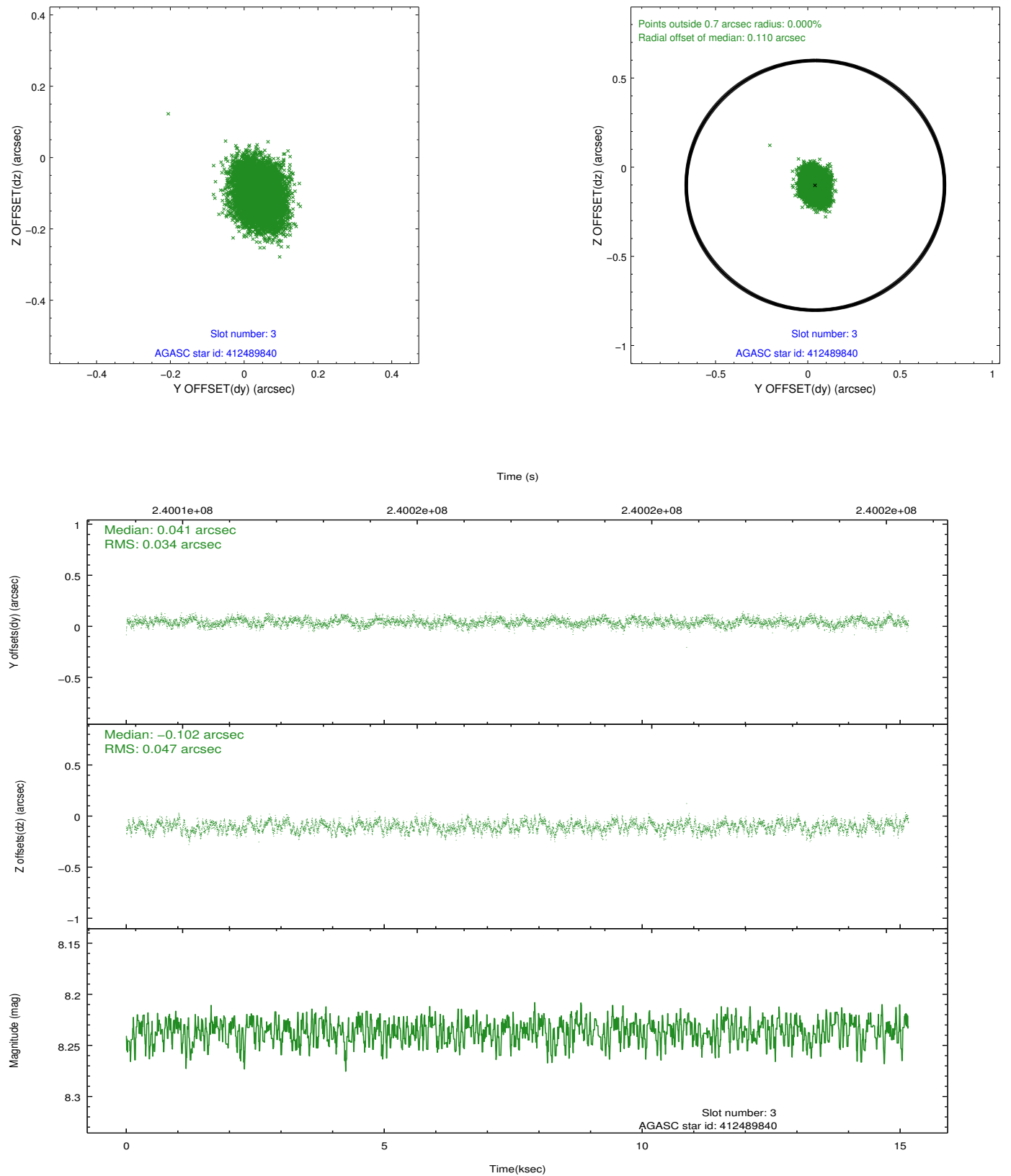


Slot Statistics

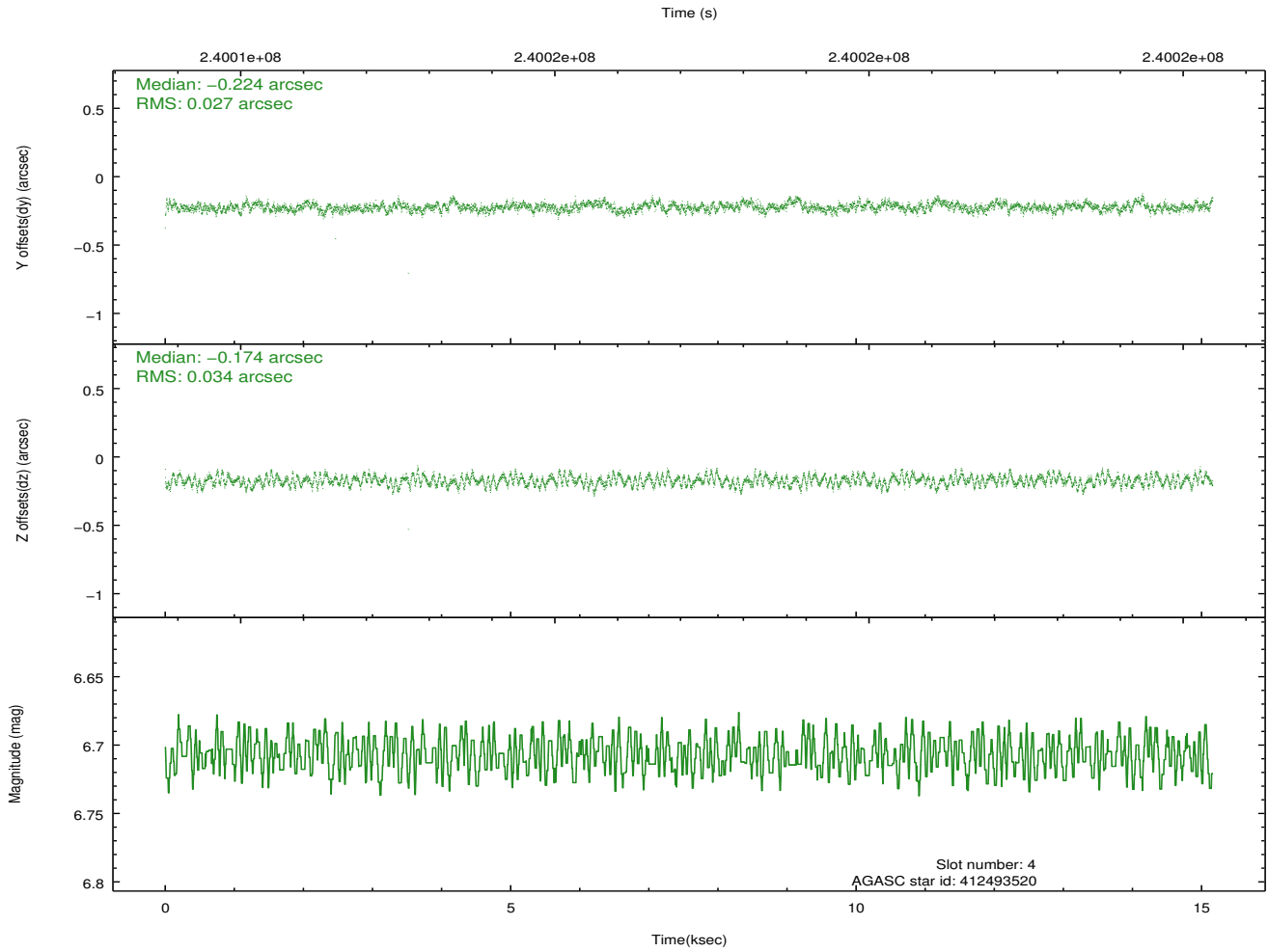
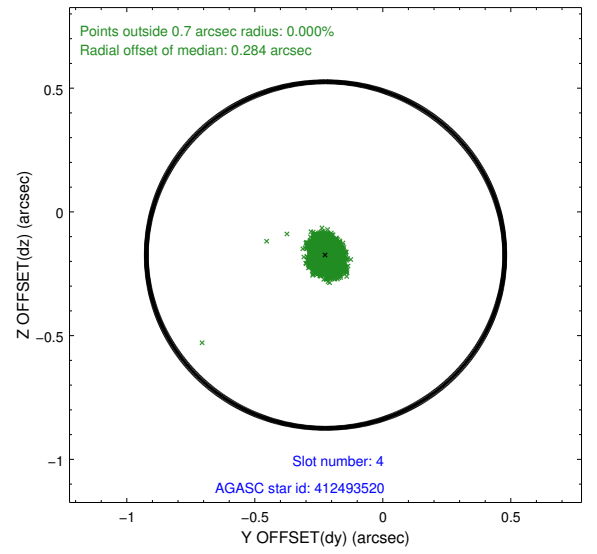
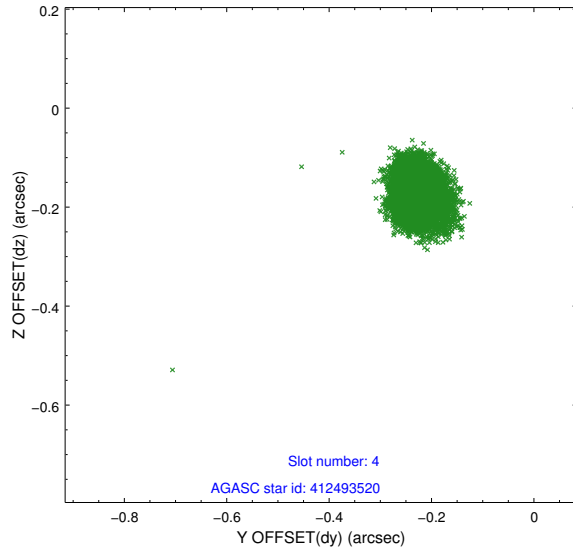
slot	status	id	mag	n_pts	med_dy	med_dz	dr1	dr2	ra	dec	mean_y	mean_z
0	FID	ACIS-S-2	7.11	3697	-0.044	-0.030	0.007	0.011	0.000000	0.000000	-760.84	-1731.32
1	FID	ACIS-S-4	7.21	3698	0.125	0.029	0.006	0.011	0.000000	0.000000	2152.42	176.98
2	FID	ACIS-S-5	7.24	3699	-0.112	0.010	0.007	0.011	0.000000	0.000000	-1813.42	170.87
3	GUIDE	412489840	8.24	7397	0.041	-0.102	0.062	0.100	294.232566	43.529806	-516.43	2048.10
4	GUIDE	412493520	6.71	7396	-0.224	-0.174	0.046	0.074	293.199761	43.432035	2031.32	1094.45
5	GUIDE	412490912	7.95	7395	-0.042	0.127	0.057	0.090	292.738445	43.844947	2379.73	-785.13
6	GUIDE	412488744	8.73	7380	0.088	0.014	0.076	0.122	293.915642	44.528560	-1461.70	-1516.55
7	GUIDE	412491344	9.41	7391	0.138	0.133	0.079	0.128	294.396054	44.414730	-2365.21	-580.80

2.4 Star Slots

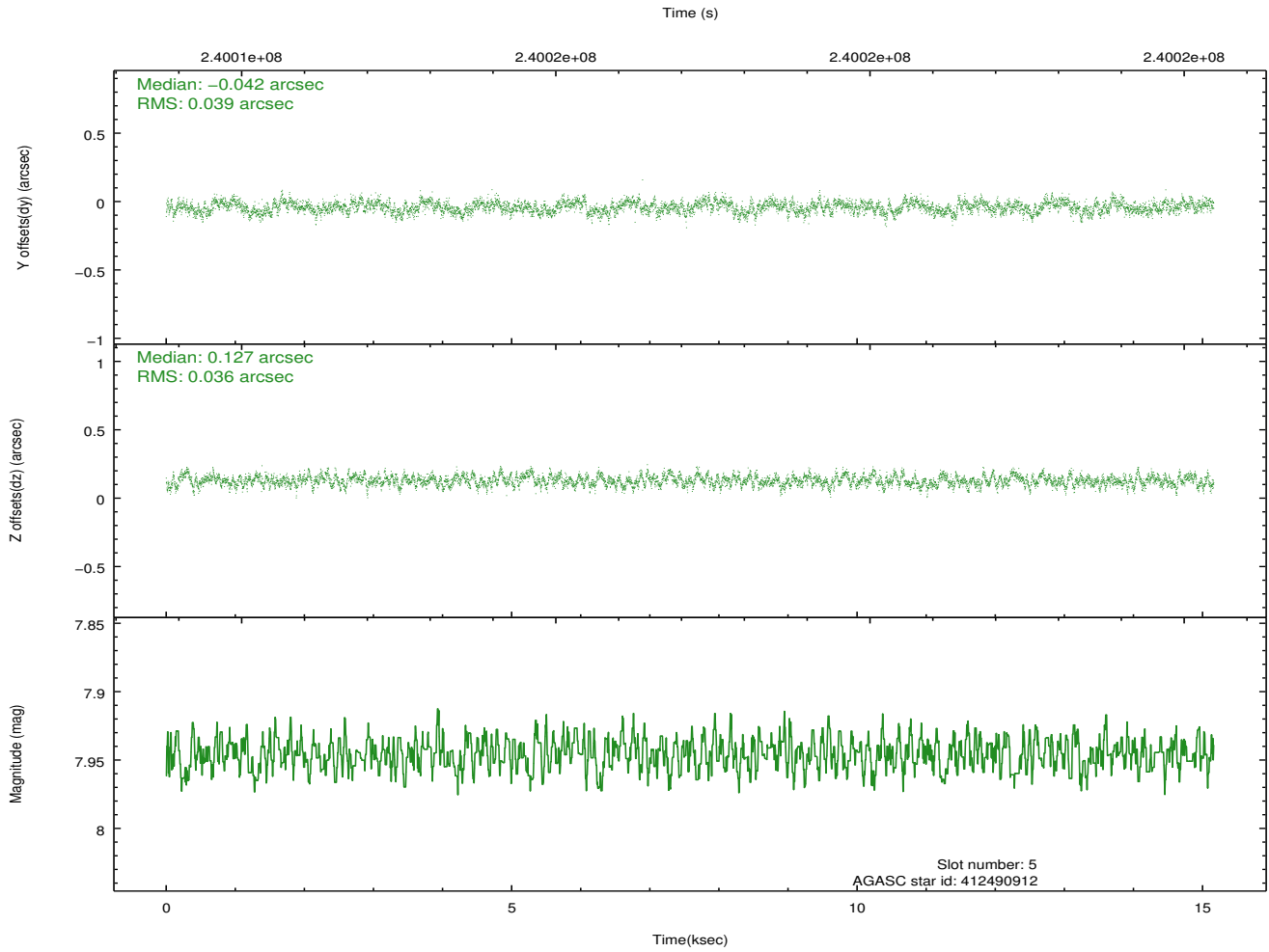
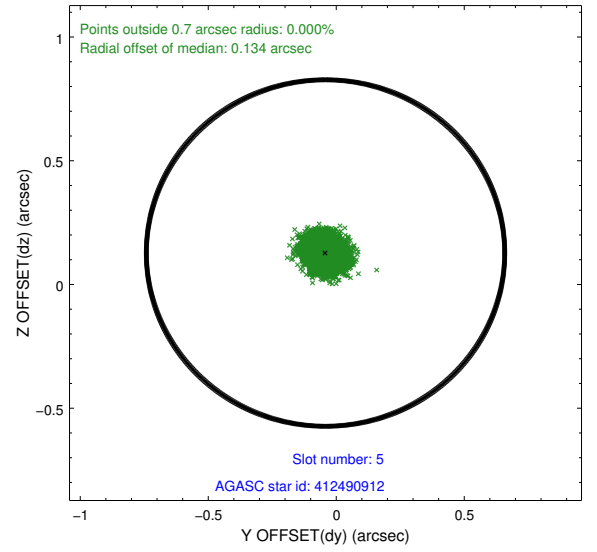
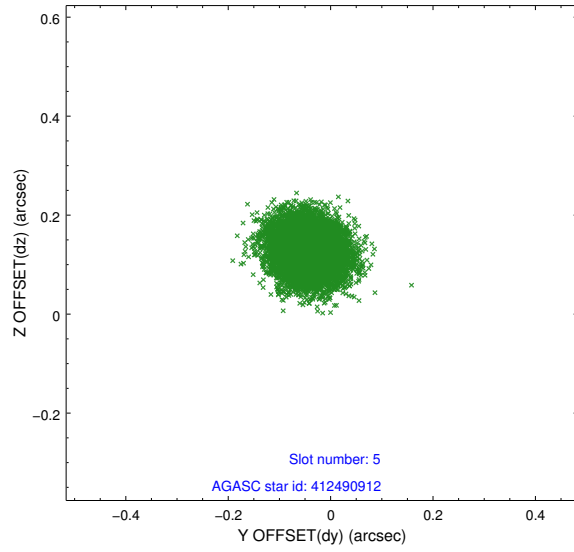
2.4.1 Slot 3



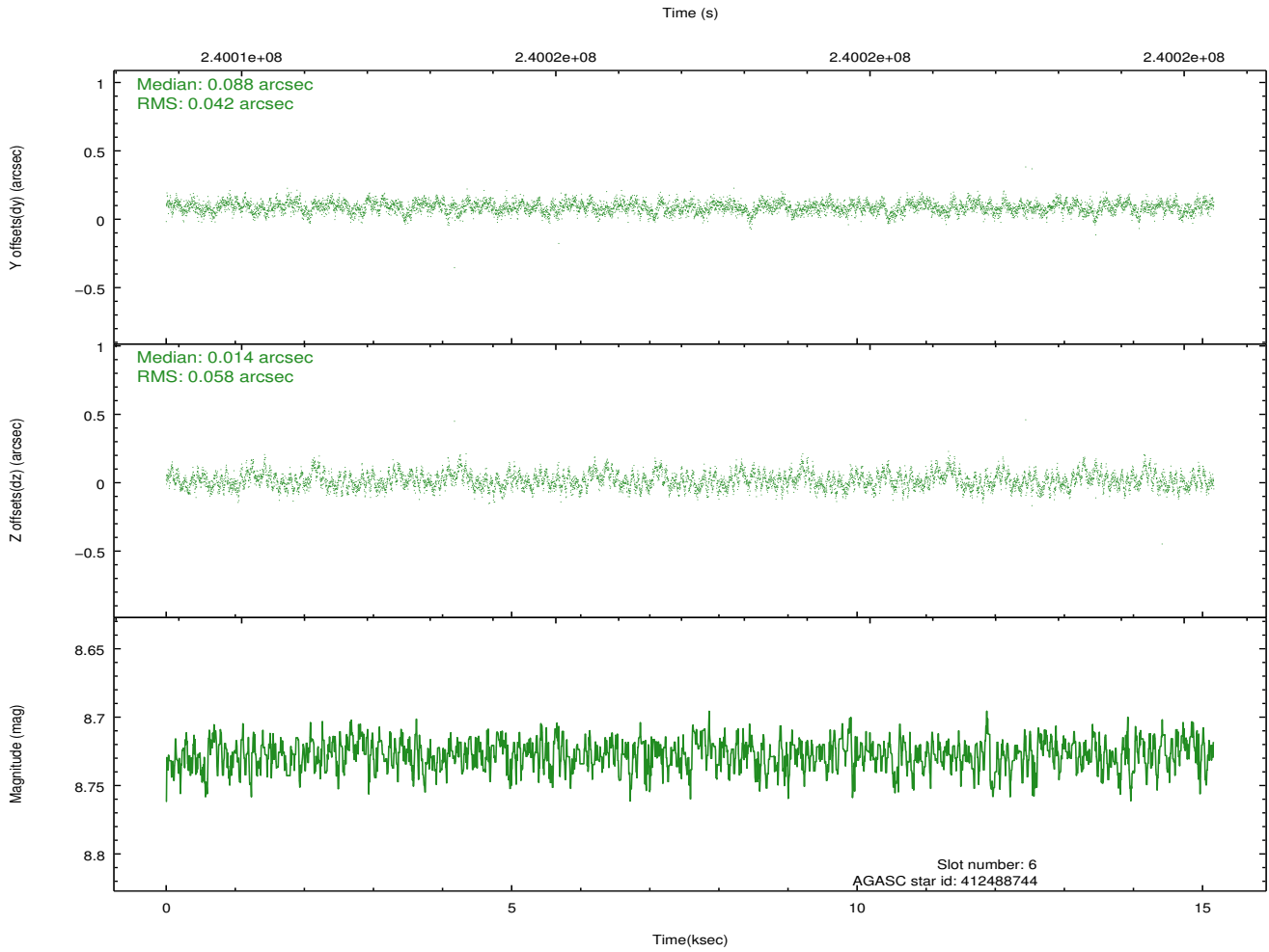
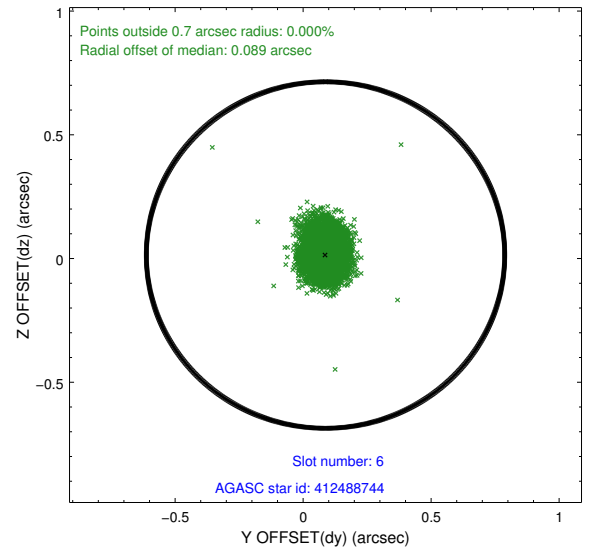
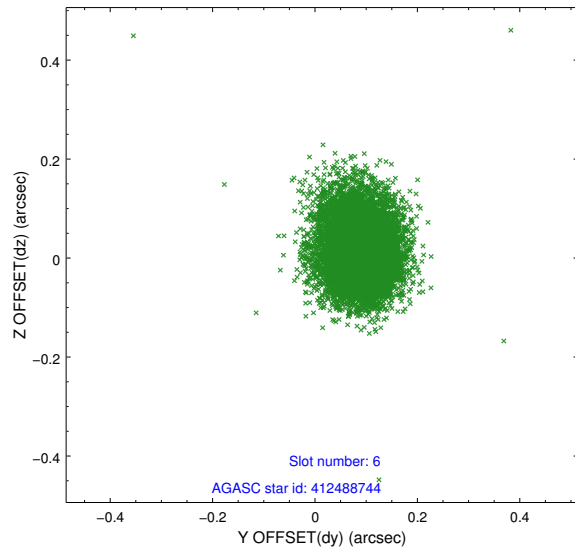
2.4.2 Slot 4



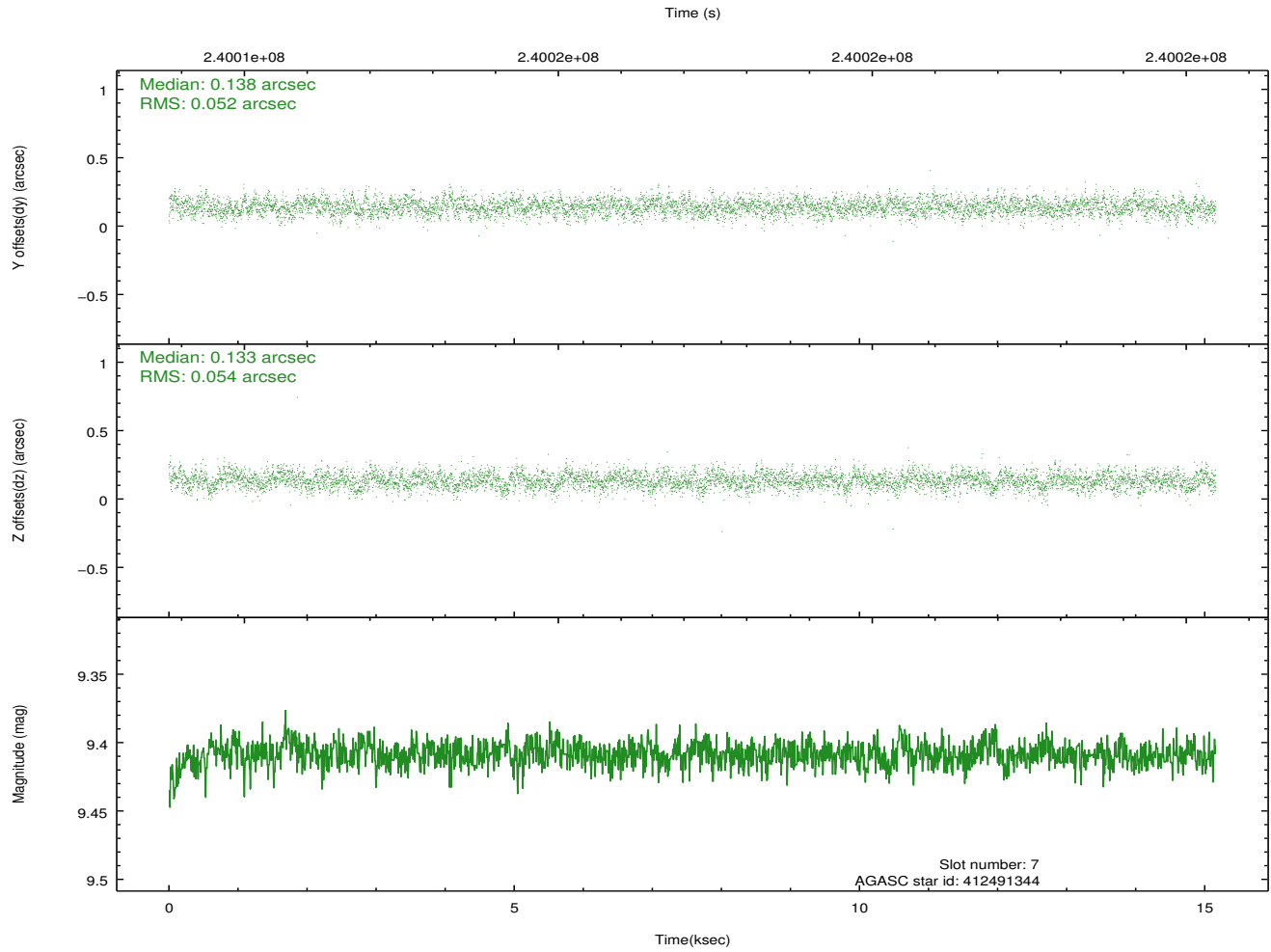
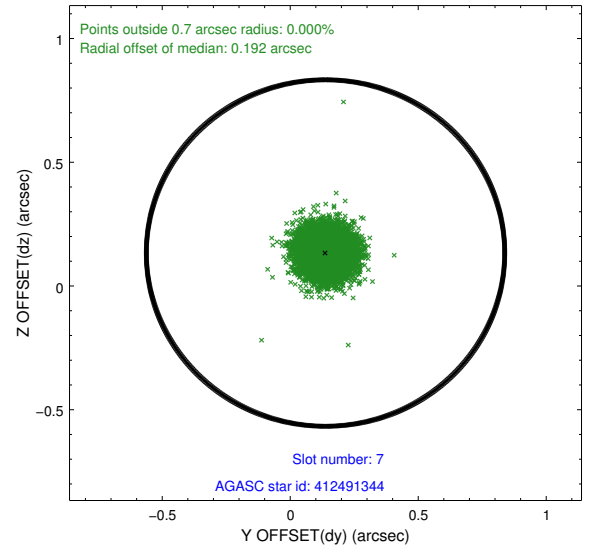
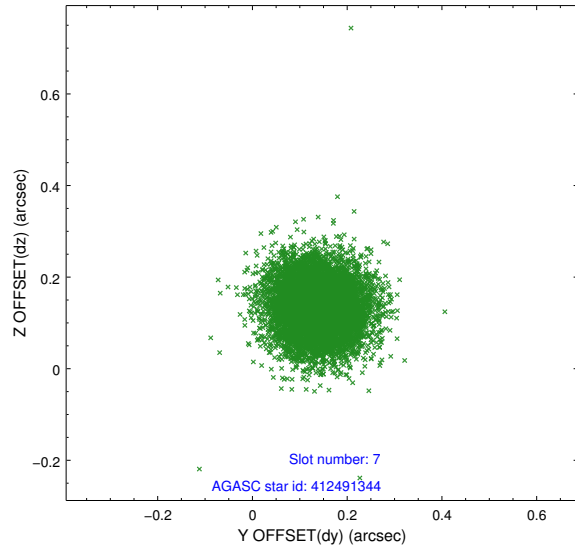
2.4.3 Slot 5



2.4.4 Slot 6

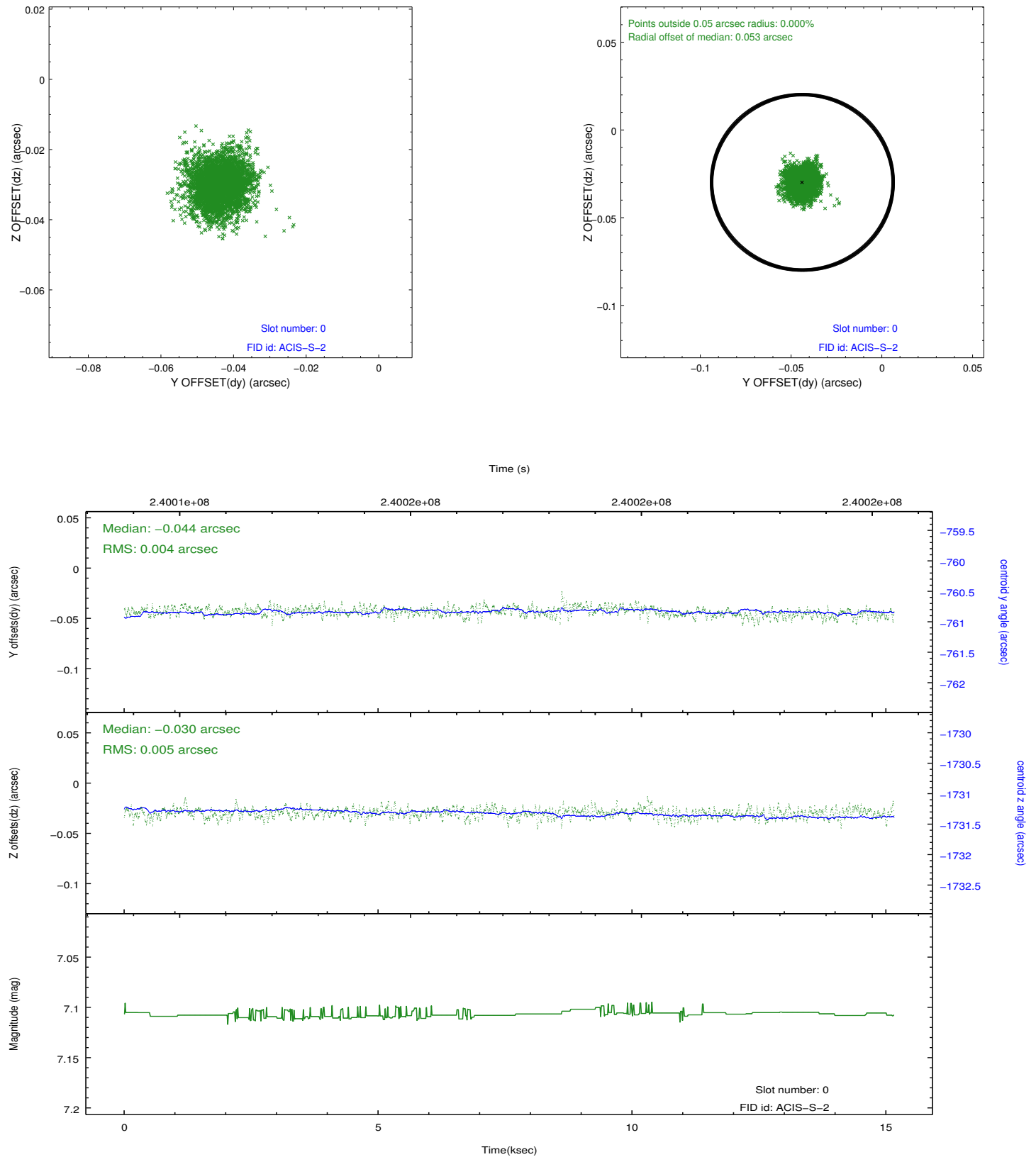


2.4.5 Slot 7

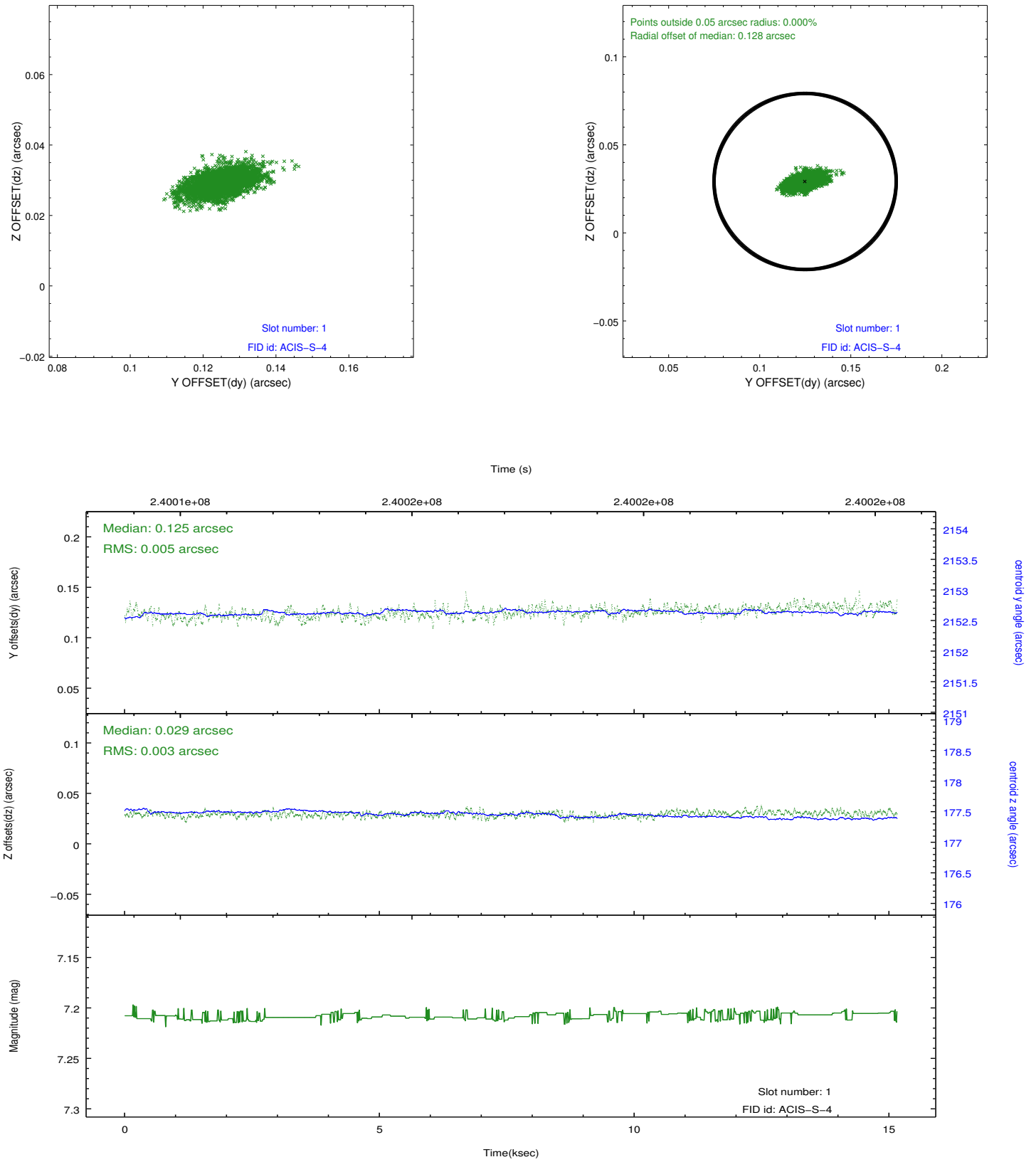


2.5 FID Slots

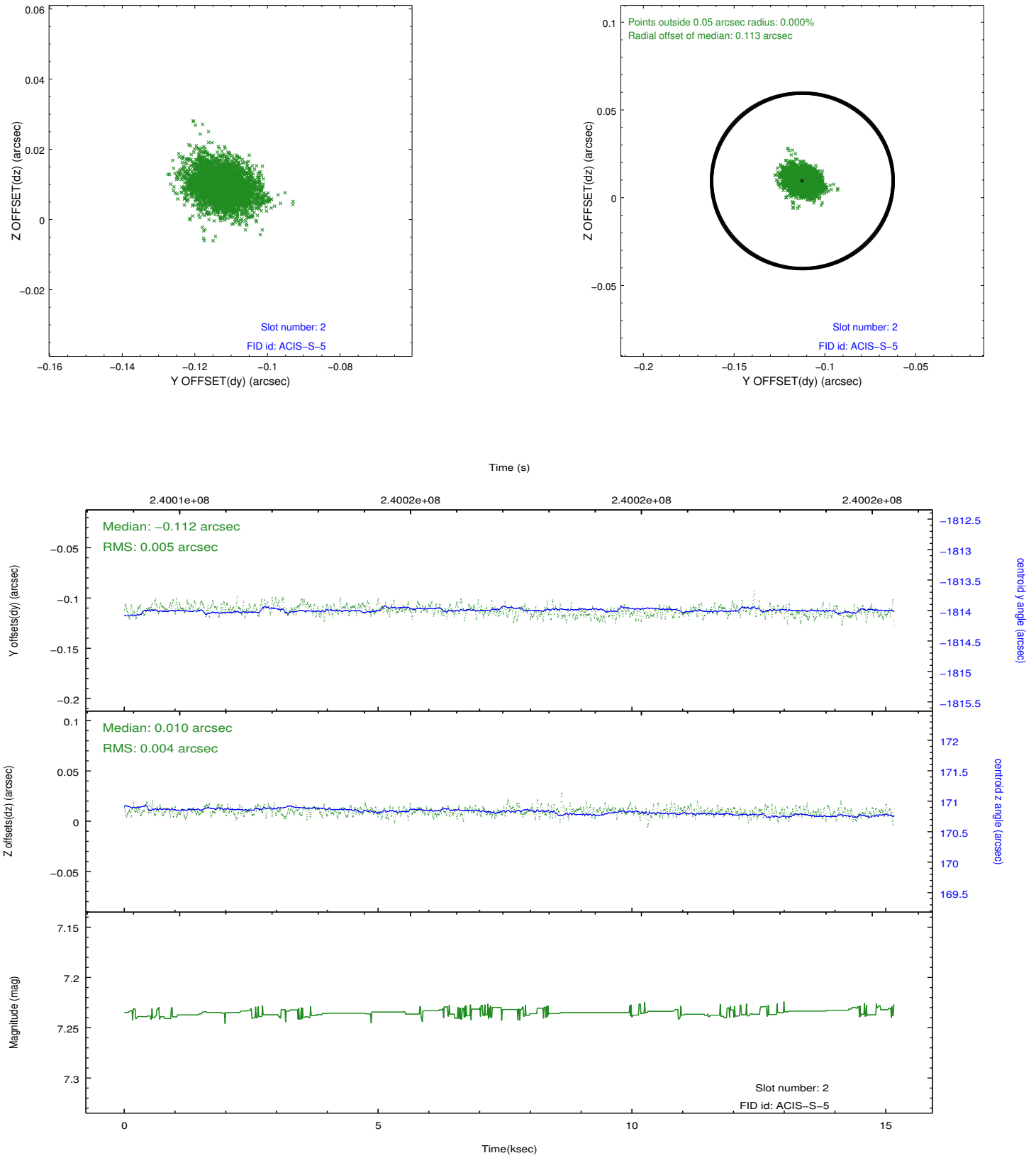
2.5.1 Slot 0



2.5.2 Slot 1



2.5.3 Slot 2



A Summary

A.1 Status

V&V Scientist	Jen Lauer
V&V Date (YYYY-MM-DD)	2013.01.24
V&V Edition	1
V&V Disposition and Status	OK
V&V Charge Time	15.28136

A.2 Comments

Charge time for this ObsId remains at previous value of 15.28136 ks although with the current processing the charge time would have been 15.16 ksec.