

# V&V Reference Report

## L2 ASCDS Version : 7.6.7.1

Observation 5386 - L2 Version 002  
Chandra X-Ray Center

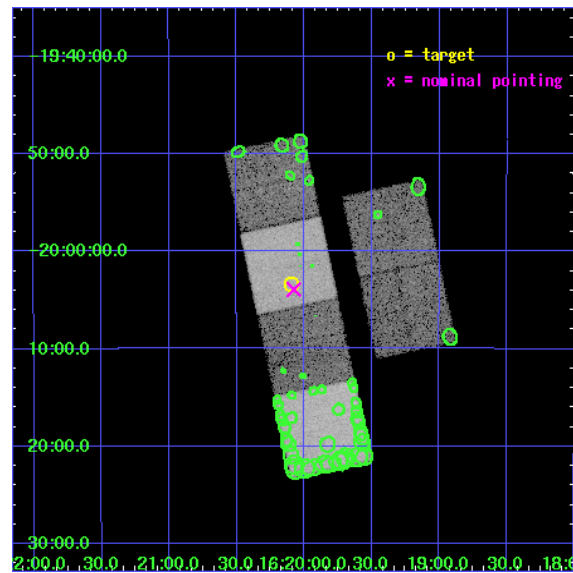
L2 Processing Date : Mar 11 2006

## Contents

<b>1</b>	<b>Front</b>	<b>2</b>
<b>2</b>	<b>OBI</b>	<b>3</b>
2.1	OBI . . . . .	3
2.1.1	Images . . . . .	3
2.1.2	Bias . . . . .	3
2.1.3	Parameters . . . . .	4
2.1.4	Events . . . . .	4
2.2	Compared Parameters . . . . .	5
2.3	Aspect . . . . .	6
2.4	Star Slots . . . . .	9
2.4.1	Slot 3 . . . . .	9
2.4.2	Slot 4 . . . . .	10
2.4.3	Slot 5 . . . . .	11
2.4.4	Slot 6 . . . . .	12
2.4.5	Slot 7 . . . . .	13
2.5	FID Slots . . . . .	14
2.5.1	Slot 0 . . . . .	14
2.5.2	Slot 1 . . . . .	15
2.5.3	Slot 2 . . . . .	16
<b>3</b>	<b>Point Sources</b>	<b>17</b>
<b>A</b>	<b>Summary</b>	<b>18</b>
A.1	Status . . . . .	18
A.2	Comments . . . . .	18

# 1 Front

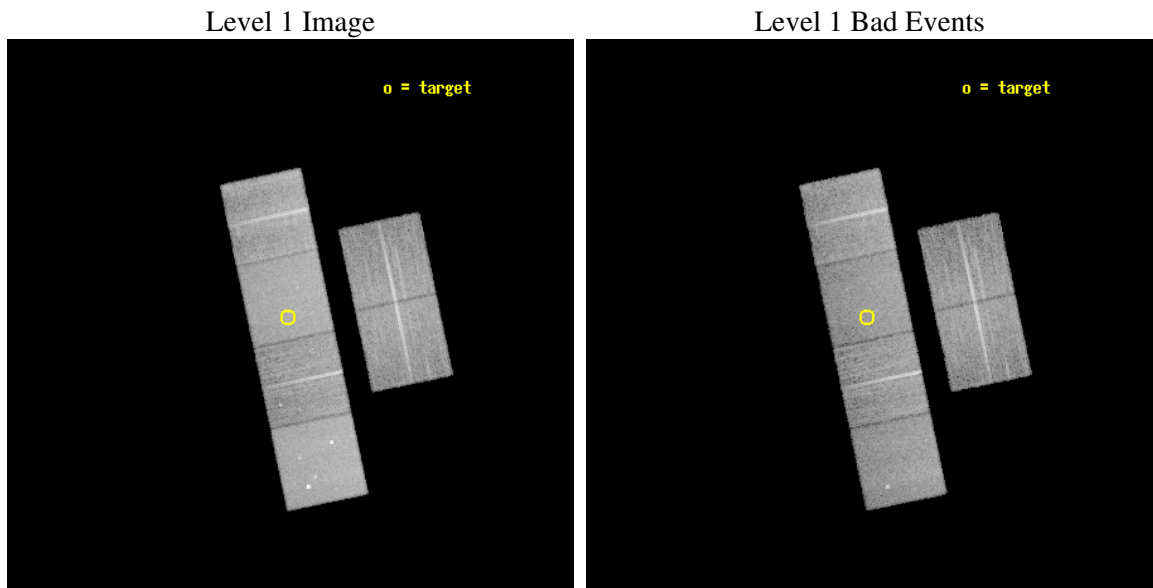
seq_num	200321
obs_id	5386
title	The puzzle of X-ray emission from magnetic stars without convective envelopes
observer	Prof. J rgen Schmitt
object	HD 147010
dtcycle	0
cycle	P
ra_targ	245.022917
dec_targ	-20.056389
ra_nom	245.01910367923
dec_nom	-20.065368194808
roll_nom	258.09442339467
revision	2
ontime	15177.599943459
livetime	14985.412034121
ontime2	15177.599943459
ontime3	15174.358953178
ontime5	15177.599943459
ontime6	15177.599943459
ontime7	15177.599943459
ontime8	15177.599943459
l2events	182752



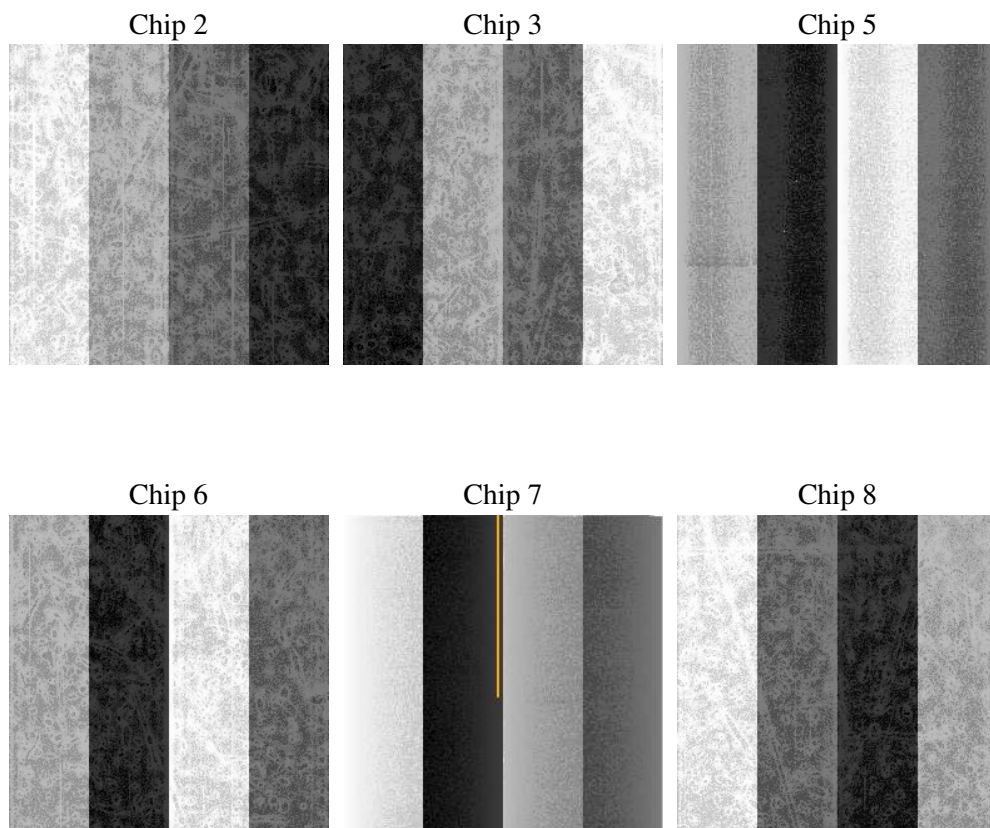
## 2 OBI

### 2.1 OBI

#### 2.1.1 Images



#### 2.1.2 Bias



### 2.1.3 Parameters

obi_num	0
ascdsver	7.6.7.1
caldsver	3.2.1
date	2006-03-11T21:20:17
revision	2

sched_exp_time	15000.000000
ontime	15394.813053817
ontime2	15394.813053817
ontime3	15391.572063535
ontime5	15394.813053817
ontime6	15394.813053817
ontime7	15394.813053817
ontime8	15394.813053817
l1events	864481

### 2.1.4 Events

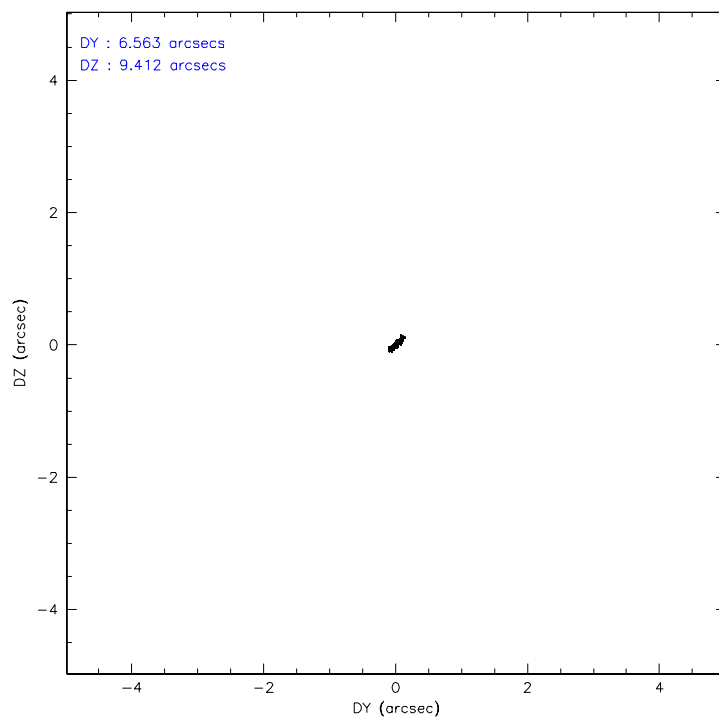
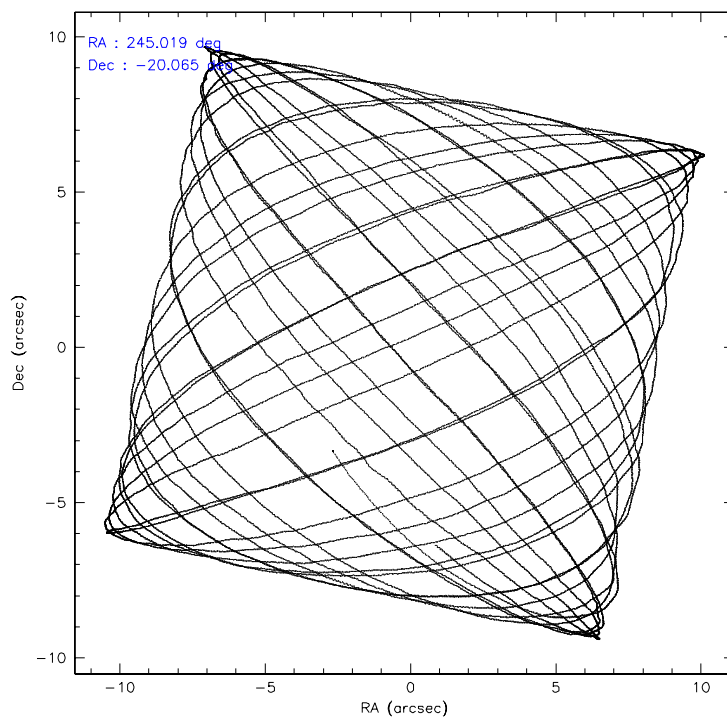
	ccd 2	ccd 3	ccd 5	ccd 6	ccd 7	ccd 8
level 1 events	124485	118399	180981	123730	163800	153086
rejected events	110600	104667	103302	109306	103239	121648
rejected %	88%	88%	57%	88%	63%	79%

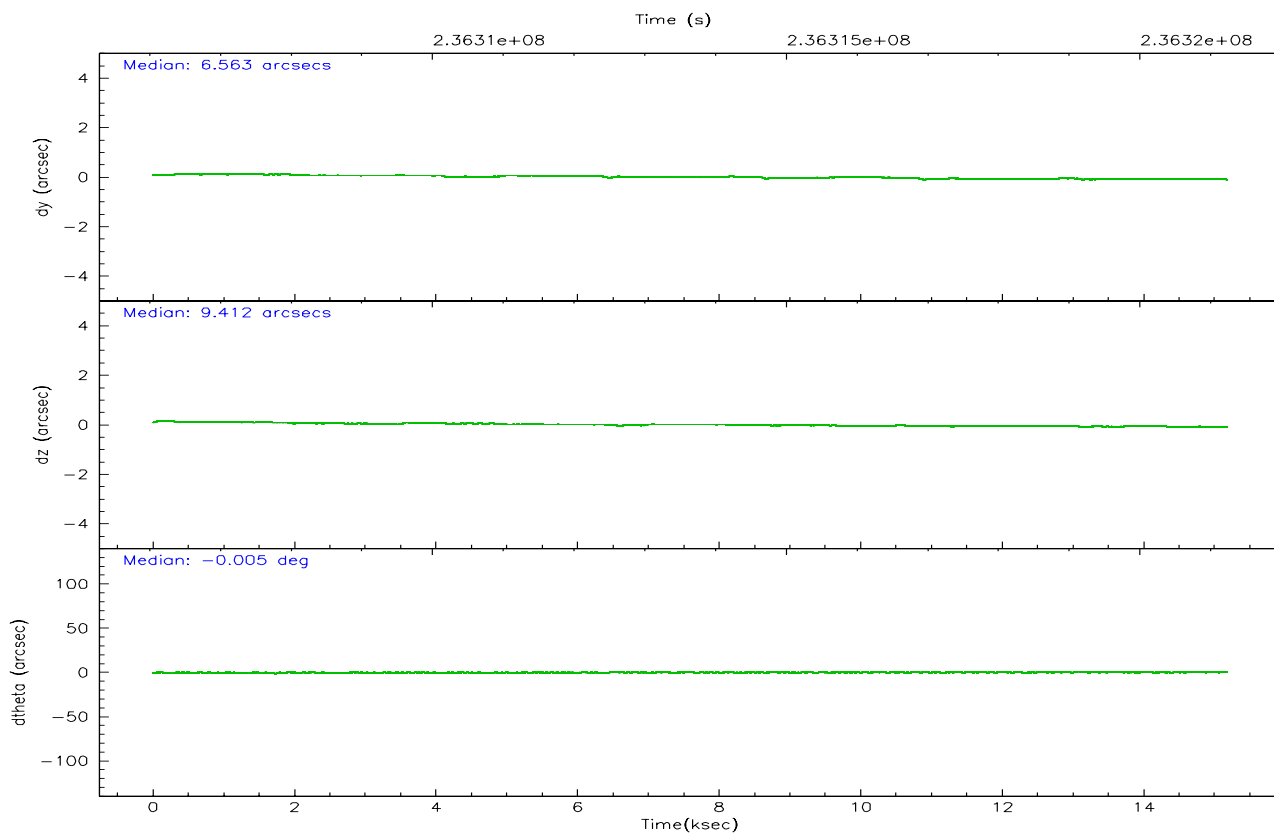
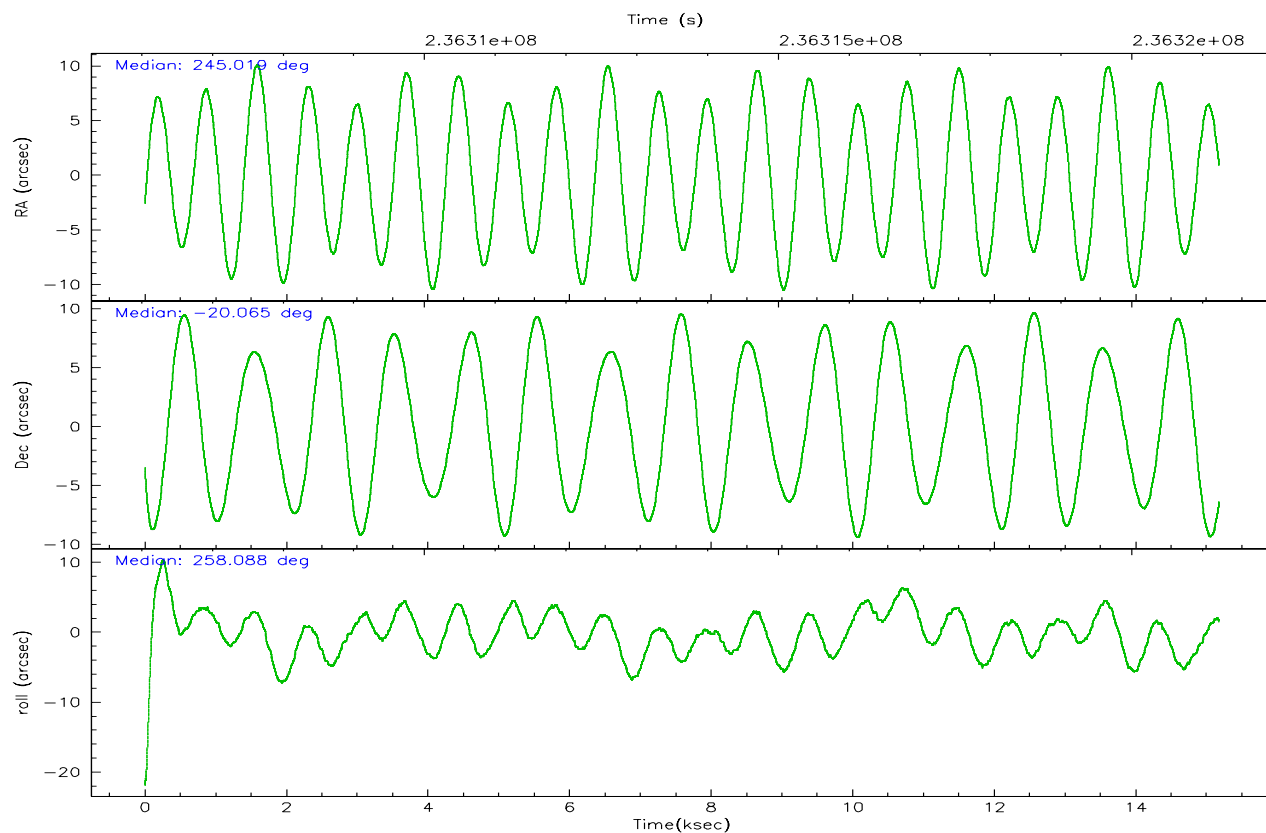
	ccd 2	ccd 3	ccd 5	ccd 6	ccd 7	ccd 8
grade 0 events	6193	6069	6296	5802	3361	10245
	4%	5%	3%	4%	2%	6%
grade 1 events	80	84	655	66	94	121
	0%	0%	0%	0%	0%	0%
grade 2 events	2888	2722	23907	3147	15347	7075
	2%	2%	13%	2%	9%	4%
grade 3 events	1272	1326	1654	1345	2916	3229
	1%	1%	0%	1%	1%	2%
grade 4 events	1337	1356	1595	1369	2794	3095
	1%	1%	0%	1%	1%	2%
grade 5 events	4832	5289	8420	5500	10489	7361
	3%	4%	4%	4%	6%	4%
grade 6 events	2381	2456	45437	2991	36980	8233
	1%	2%	25%	2%	22%	5%
grade 7 events	105502	99097	93017	103510	91819	113727
	84%	83%	51%	83%	56%	74%

## 2.2 Compared Parameters

Parameter	Planned	Actual	Parameter	Planned	Actual
Instrument	ACIS	ACIS	Obspar format version number	6	6
Detector	ACIS-235678	ACIS-235678	Obspar file type	PREDICTED	ACTUAL
Grating	NONE	NONE	Obspar update status	NONE	UPDATED
Data mode	FAINT	FAINT	On-chip summing requested	N	N
Observation mode	POINTING	POINTING	Subarray requested	NONE	NONE
Pointing RA	245.009686	245.0191036792282	Alternating exposures requested	N	N
Pointing Dec	-20.039579	-20.06536819480755	Primary exposure time	0.000000	3.2
Pointing Roll	257.934587	258.0944233946701			
SIM focus pos (mm)	-0.684267	-0.6828225247311905			
SIM defocus (mm)	0	0.001444936568705701			
SIM translation stage pos (mm)	-190.132523	-190.1400660498719			
SIM translation stage offset (mm)	0	0.00754346686406393			
Observation start time	236306229.184000	236304906.32265			
Observation start date	2005-06-28T00:36:05	2005-06-28T00:15:06			
Observation end time	236321229.184000	236321935.67343			
Observation end date	2005-06-28T04:46:05	2005-06-28T04:58:55			
Read mode	TIMED	TIMED			

## 2.3 Aspect





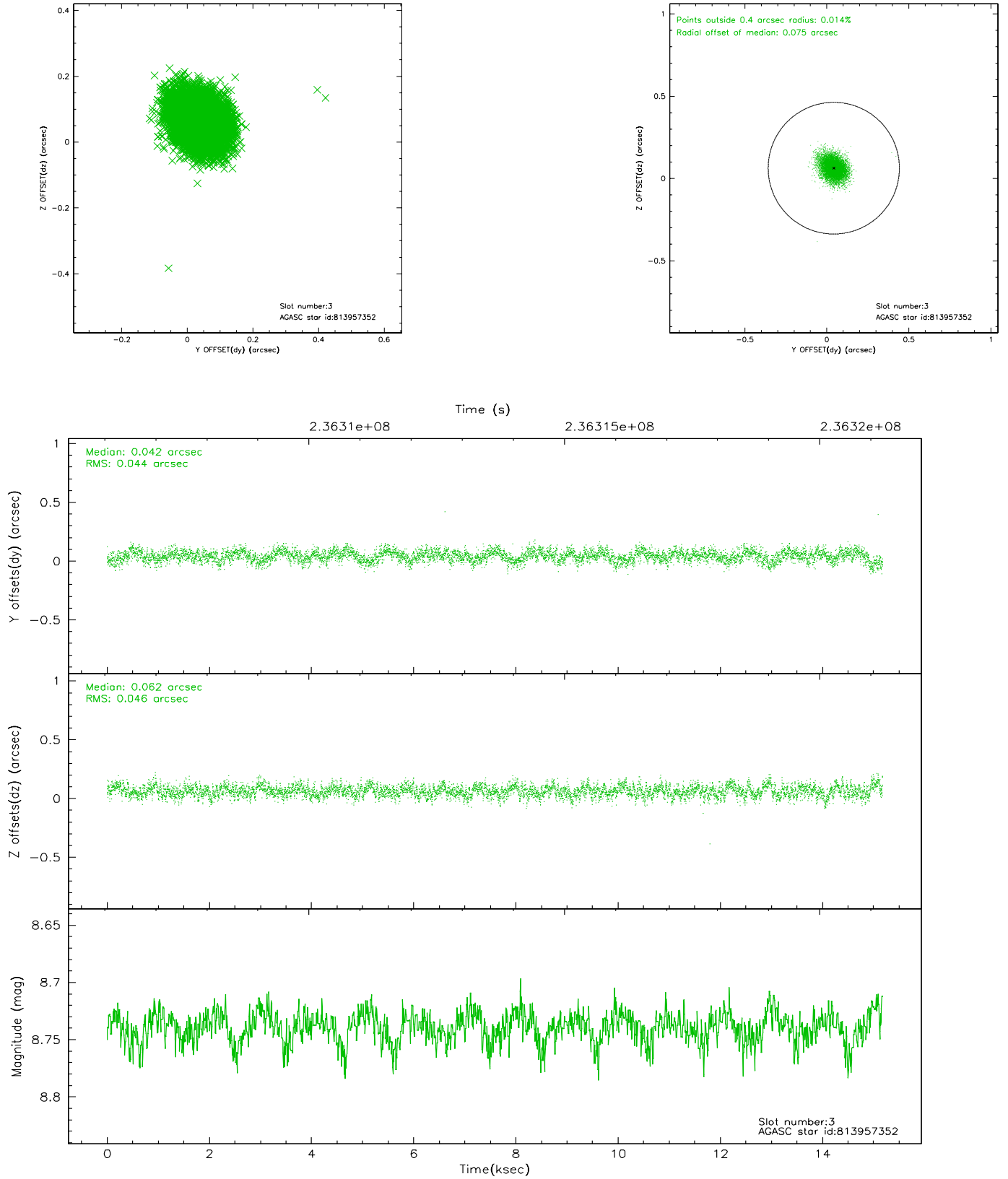
### Slot Statistics

slot	status	id	mag	n_pts	med_dy	med_dz	dr1	dr2	ra	dec	mean_y	mean_z
0	FID	ACIS-S-2	7.10	3703	-0.049	-0.020	0.007	0.012	0.000000	0.000000	-759.34	-1730.68
1	FID	ACIS-S-4	7.21	3703	0.061	0.029	0.005	0.009	0.000000	0.000000	2153.89	177.58
2	FID	ACIS-S-5	7.24	3703	-0.044	0.000	0.007	0.011	0.000000	0.000000	-1811.81	171.52
3	GUIDE	813957352	8.74	7402	0.042	0.062	0.067	0.109	245.284298	-19.945026	-524.70	837.32
4	GUIDE	813959384	9.76	7377	0.056	0.077	0.113	0.184	244.705730	-19.678851	-1053.38	-1278.67
5	GUIDE	813961328	8.40	7405	-0.029	-0.191	0.058	0.096	244.652122	-19.784389	-643.62	-1376.70
6	GUIDE	813962896	8.95	7399	-0.090	0.015	0.080	0.127	244.578489	-20.615072	2331.97	-987.37
7	GUIDE	813964048	6.10	7404	0.024	0.036	0.054	0.086	244.782175	-20.218073	790.38	-617.08

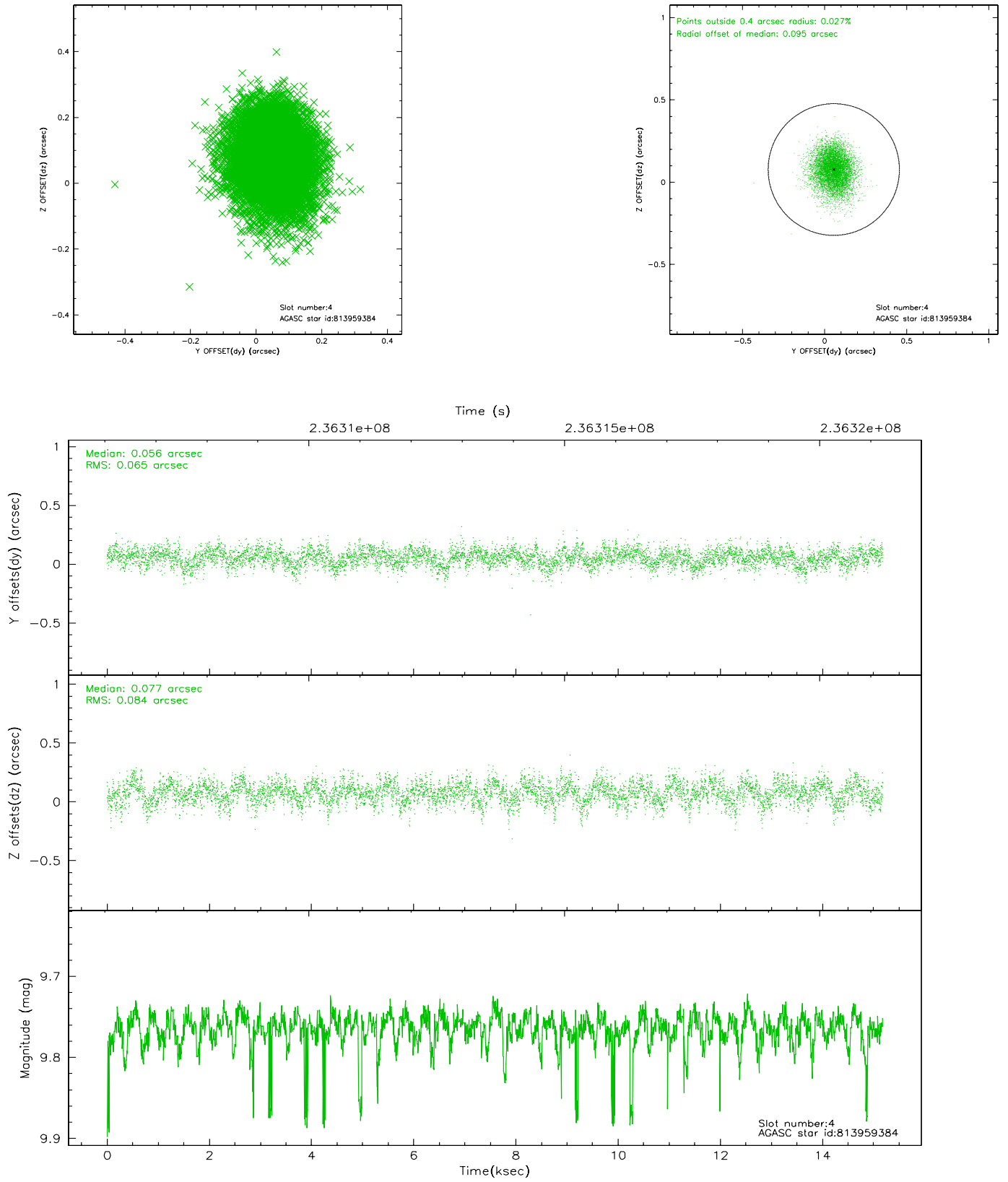


## 2.4 Star Slots

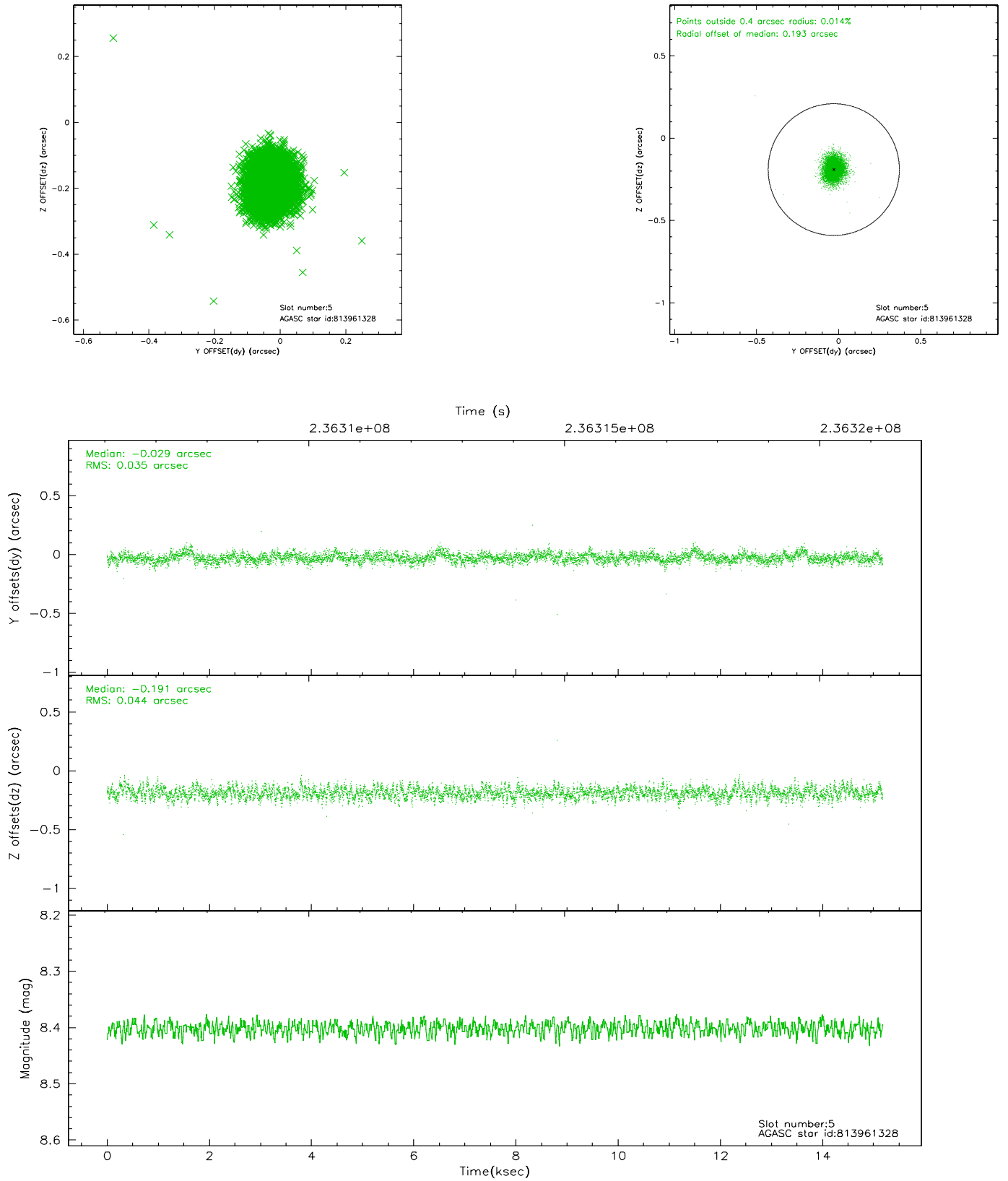
### 2.4.1 Slot 3



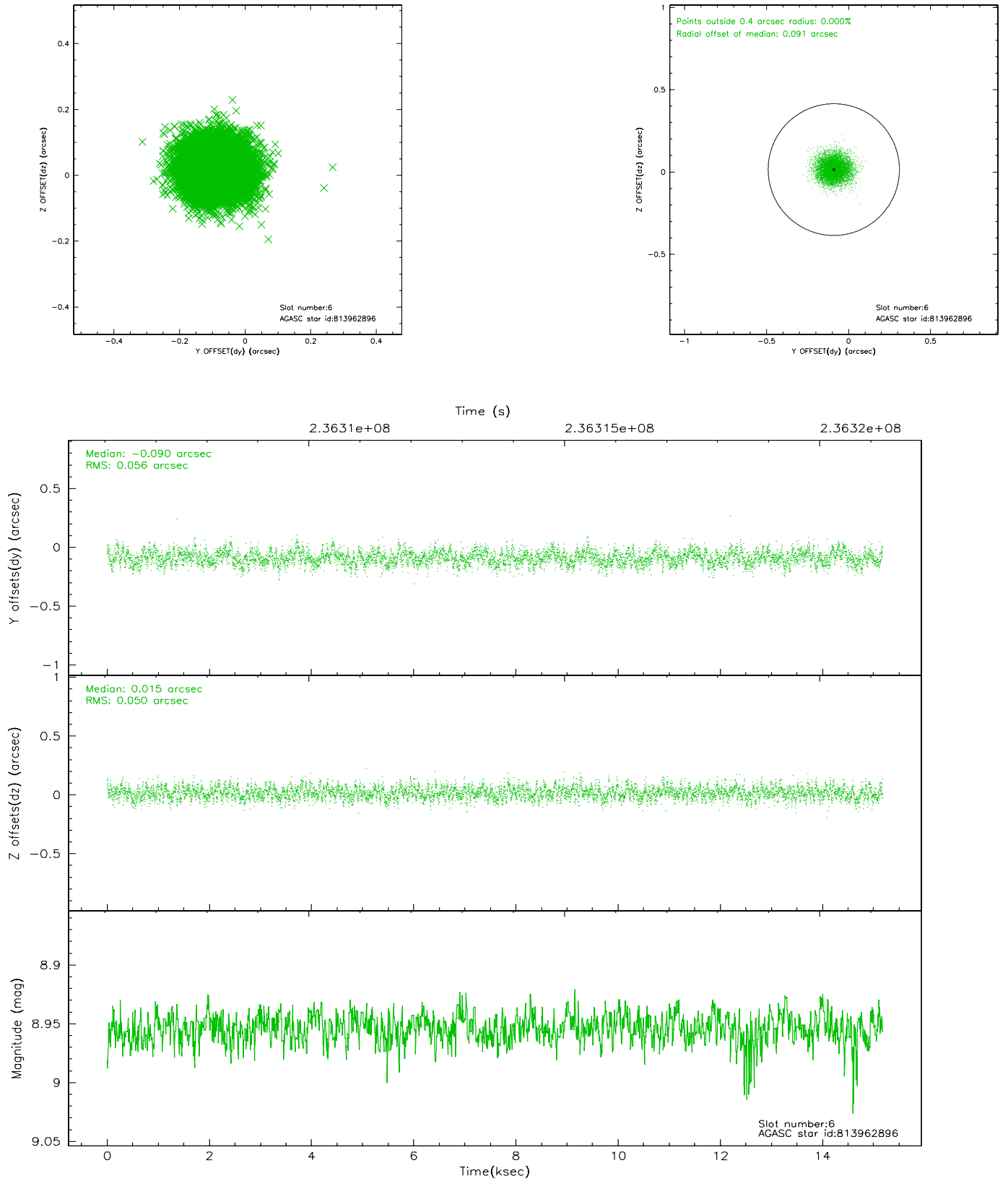
## 2.4.2 Slot 4



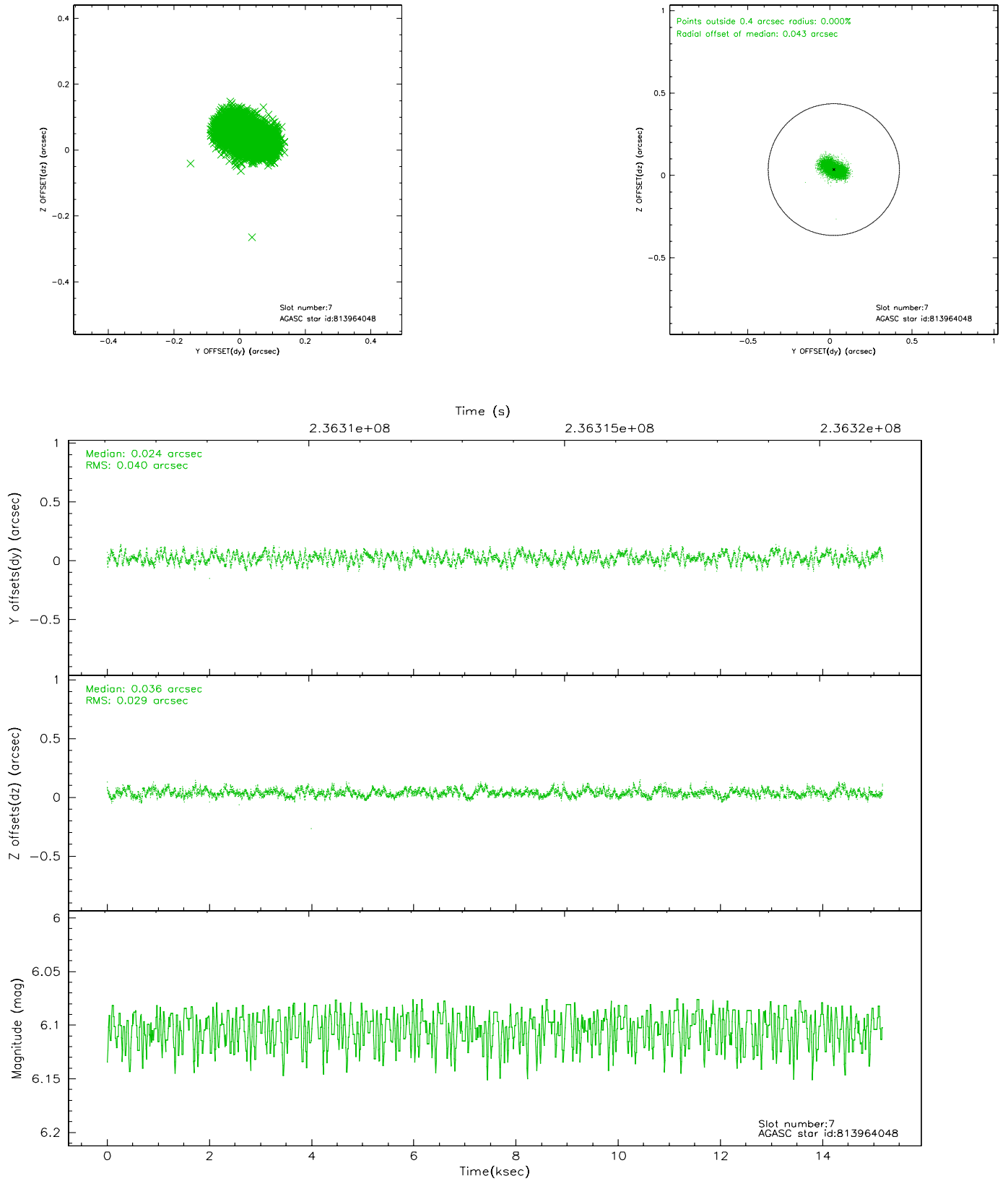
### 2.4.3 Slot 5



## 2.4.4 Slot 6

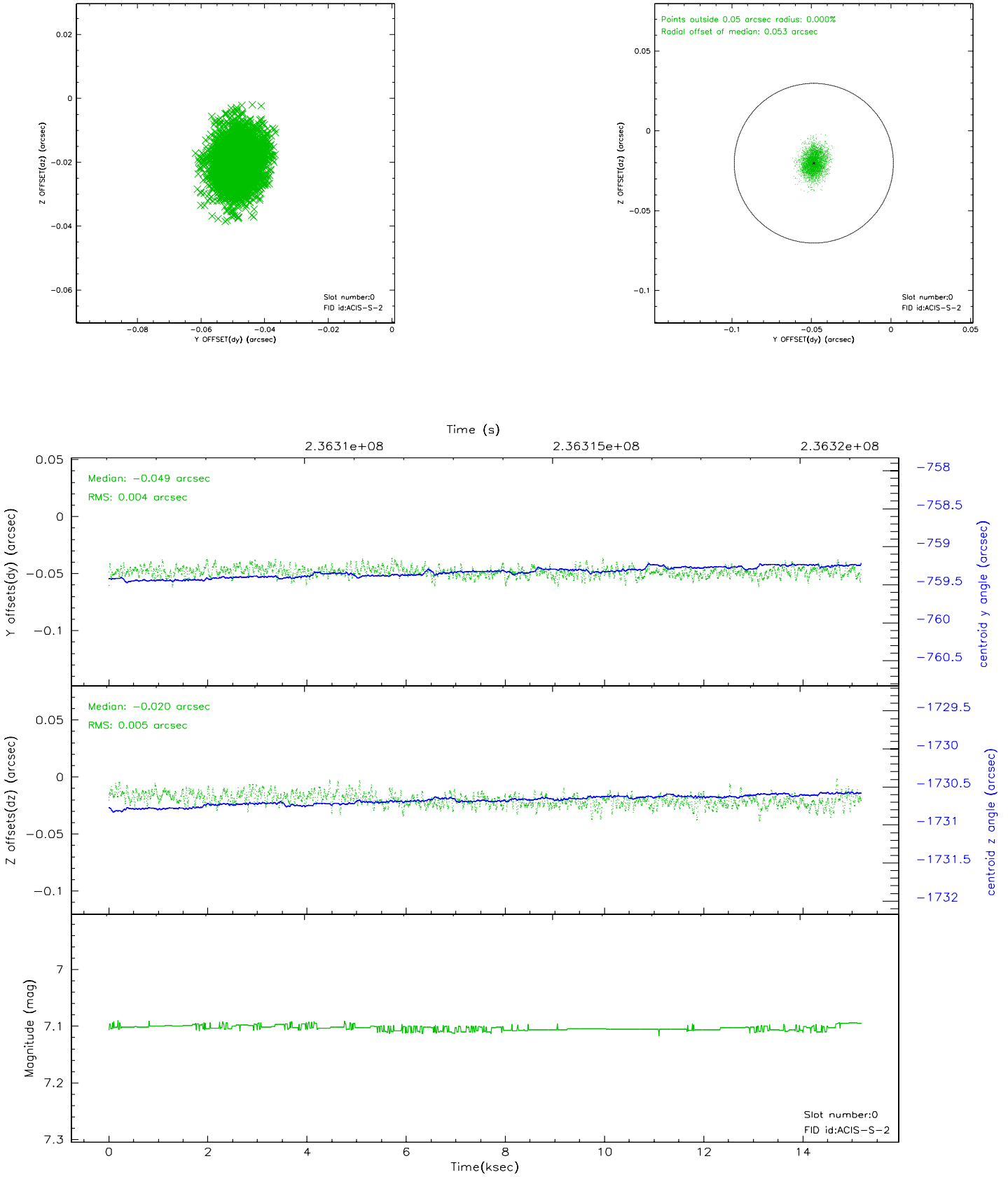


## 2.4.5 Slot 7

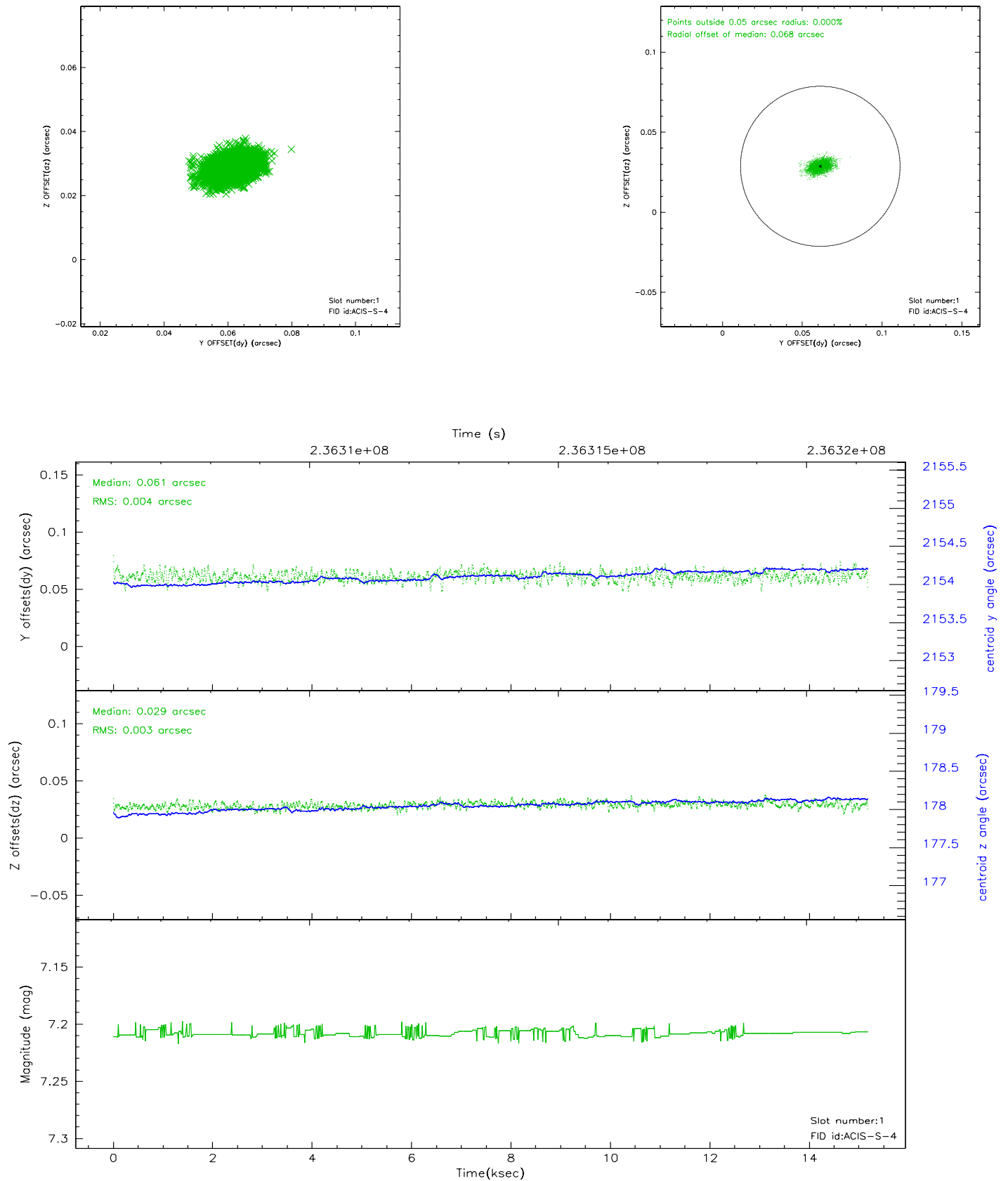


## 2.5 FID Slots

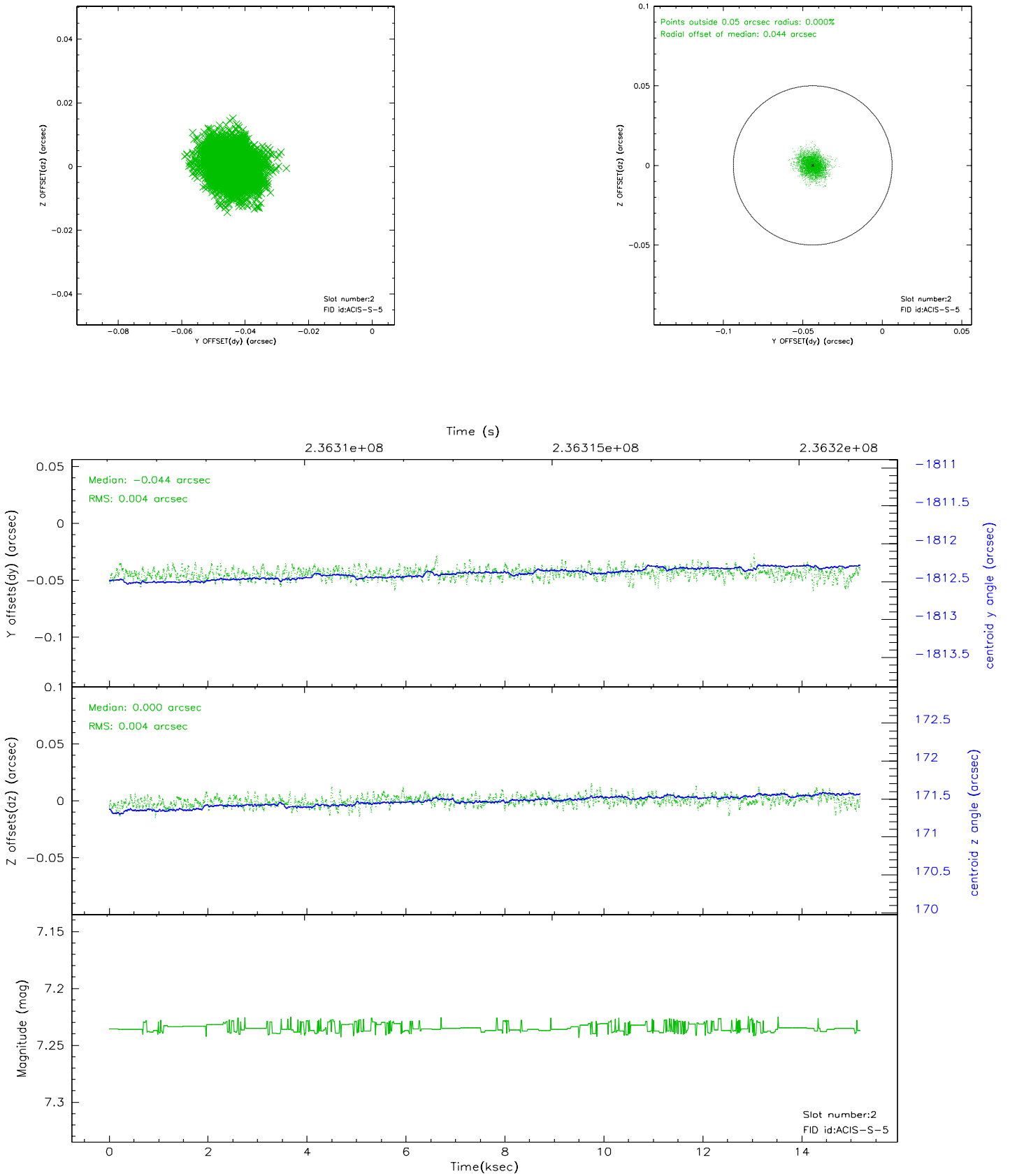
### 2.5.1 Slot 0



## 2.5.2 Slot 1

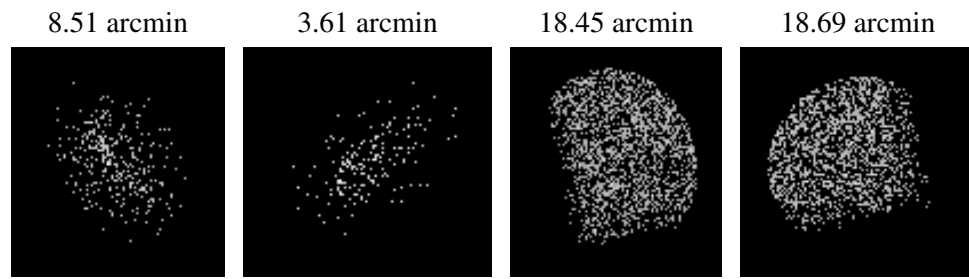


### 2.5.3 Slot 2





### 3 Point Sources



## A Summary

### A.1 Status

V&V Scientist	Beth Sundheim
V&V Date (YYYY-MM-DD)	2006.03.13
V&V Edition	1
V&V Disposition and Status	OK
V&V Charge Time	15.17759

### A.2 Comments

Focal plane temperature is elevated during initial ~6 ksec of observation.