

V&V Reference Report

L2 ASCDS Version : 7.6.7.1

Observation 5385 - L2 Version 002
Chandra X-Ray Center

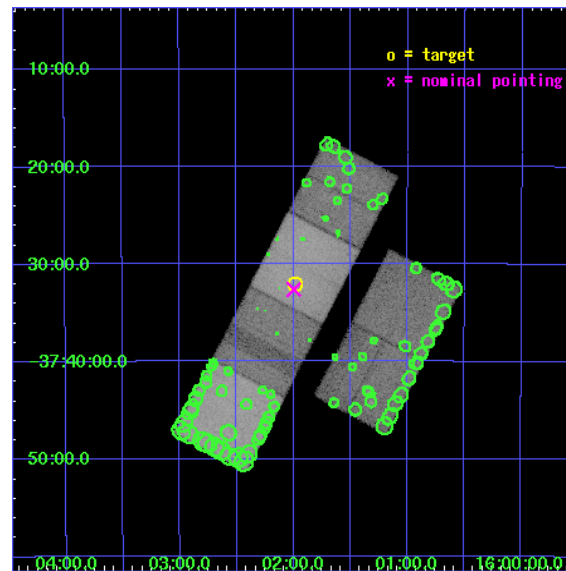
L2 Processing Date : Mar 10 2006

Contents

1	Front	2
2	OBI	3
2.1	OBI	3
2.1.1	Images	3
2.1.2	Bias	3
2.1.3	Parameters	4
2.1.4	Events	4
2.2	Compared Parameters	5
2.3	Aspect	6
2.4	Star Slots	9
2.4.1	Slot 3	9
2.4.2	Slot 4	10
2.4.3	Slot 5	11
2.4.4	Slot 6	12
2.4.5	Slot 7	13
2.5	FID Slots	14
2.5.1	Slot 0	14
2.5.2	Slot 1	15
2.5.3	Slot 2	16
3	Point Sources	17
A	Summary	18
A.1	Status	18
A.2	Comments	18

1 Front

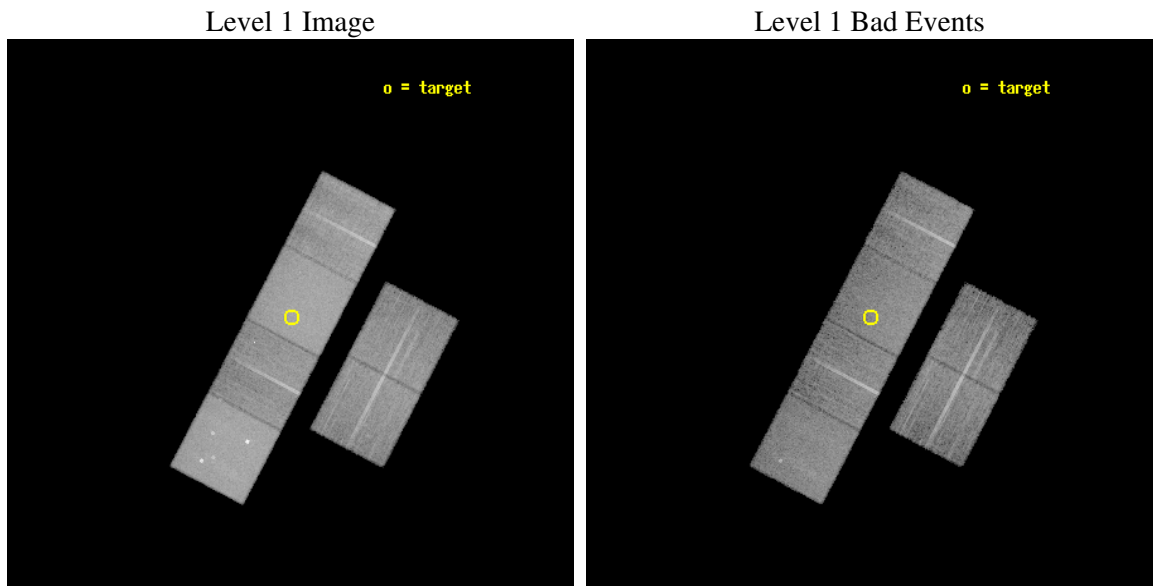
seq_num	200320
obs_id	5385
title	The puzzle of X-ray emission from magnetic stars without convective envelopes
observer	Prof. J rgen Schmitt
object	HD 143473
dtcycle	0
cycle	P
ra_targ	240.495417
dec_targ	-37.534361
ra_nom	240.49912234342
dec_nom	-37.543560373186
roll_nom	297.59162211388
revision	2
ontime	14809.59994483
livetime	14622.071873058
ontime2	14809.59994483
ontime3	14809.598454773
ontime5	14809.59994483
ontime6	14809.59994483
ontime7	14809.59994483
ontime8	14806.316414595
l2events	387611



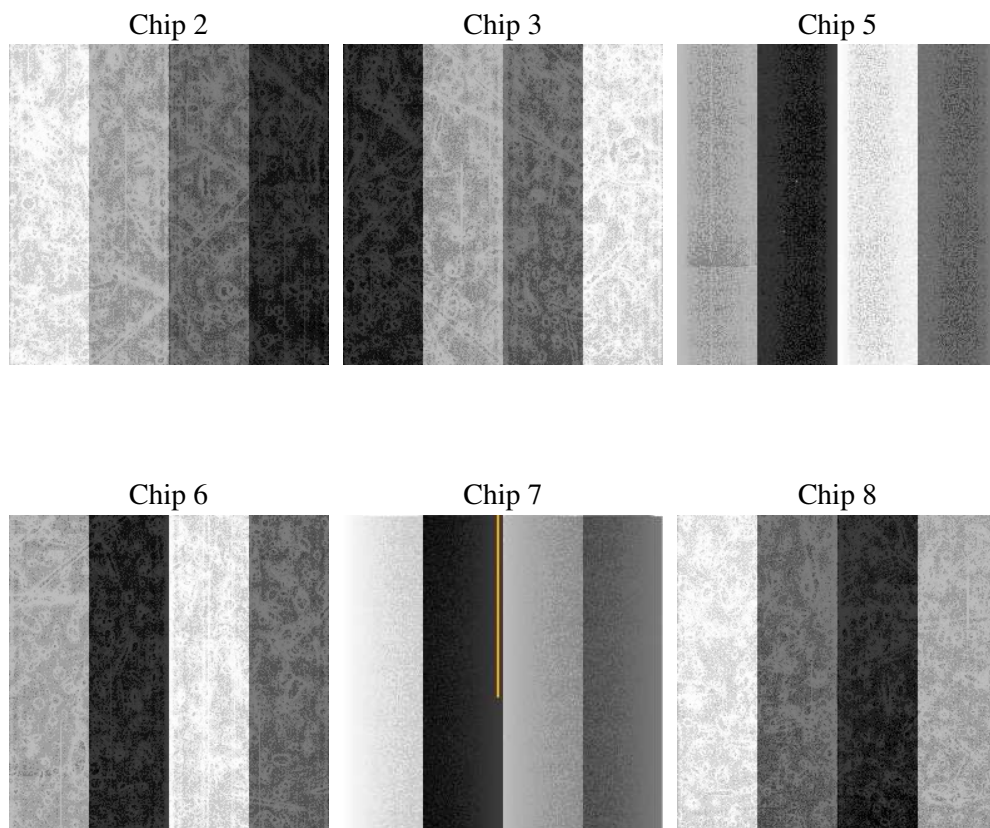
2 OBI

2.1 OBI

2.1.1 Images



2.1.2 Bias



2.1.3 Parameters

obi_num	0
ascdsver	7.6.7.1
caldsver	3.2.1
date	2006-03-10T13:18:21
revision	2

sched_exp_time	14849.468000
ontime	14811.409136266
ontime2	14811.409136266
ontime3	14811.409136266
ontime5	14811.409136266
ontime6	14811.409136266
ontime7	14811.409136266
ontime8	14808.16813606
l1events	1035975

2.1.4 Events

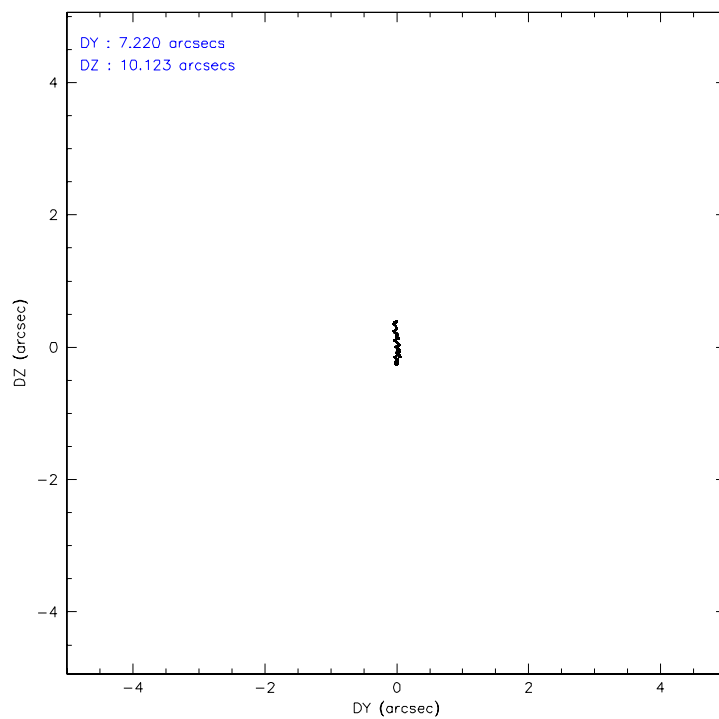
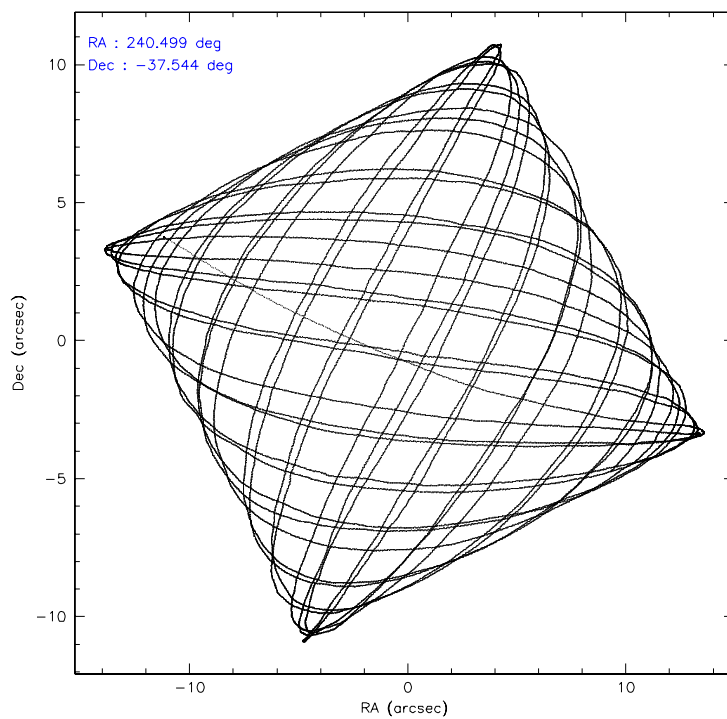
	ccd 2	ccd 3	ccd 5	ccd 6	ccd 7	ccd 8
level 1 events	142095	136967	223886	145180	209706	178141
rejected events	99777	94590	101663	98881	101814	111792
rejected %	70%	69%	45%	68%	48%	62%

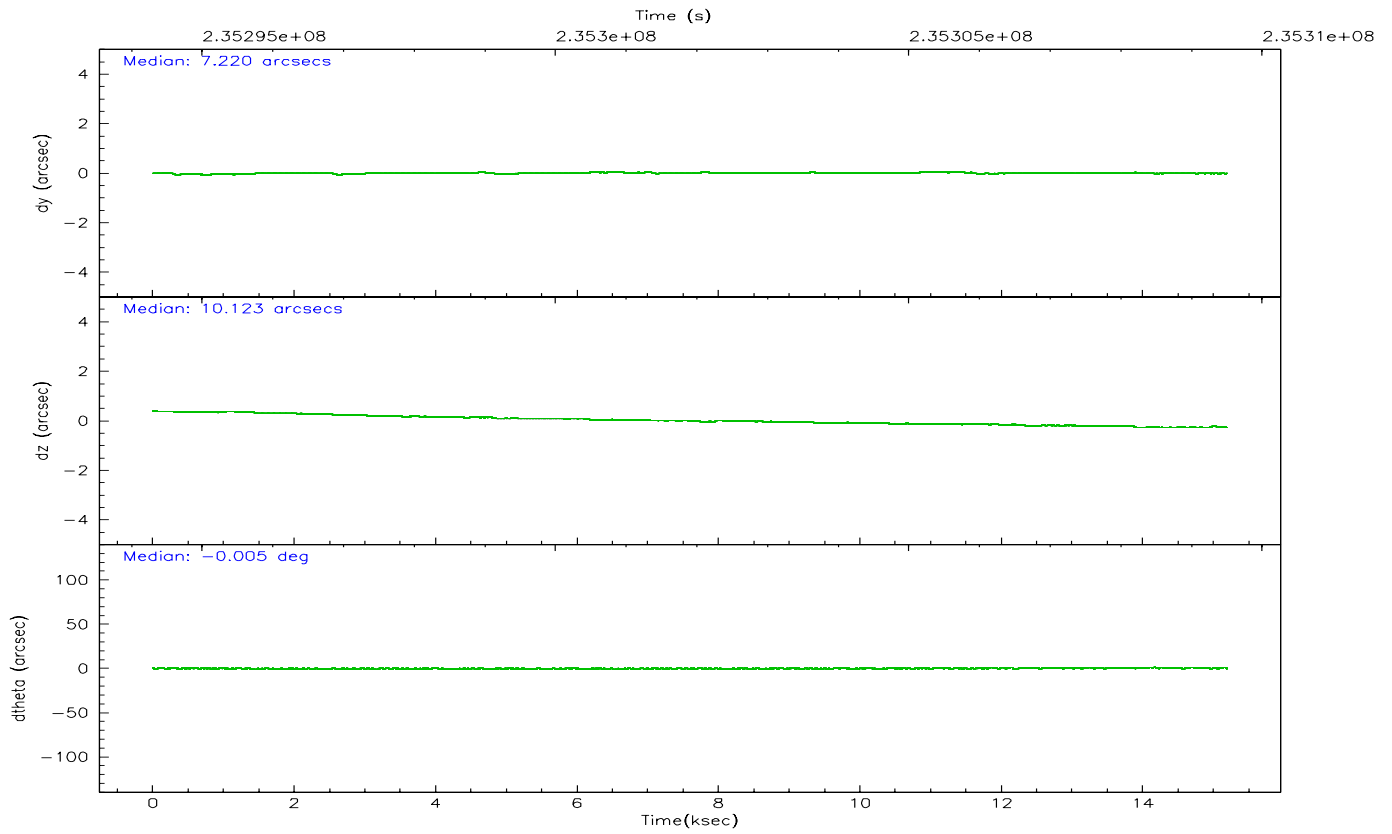
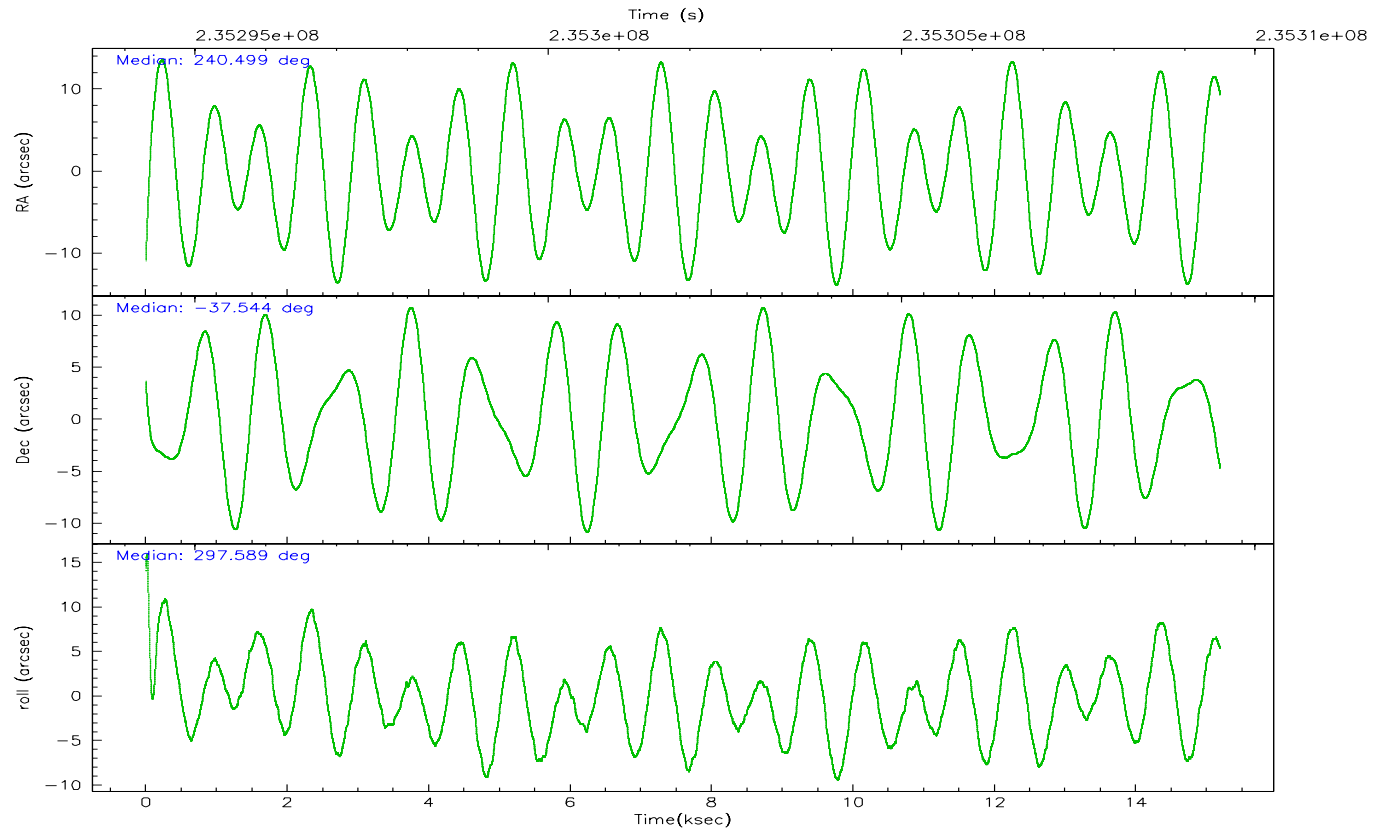
	ccd 2	ccd 3	ccd 5	ccd 6	ccd 7	ccd 8
grade 0 events	27570	27189	12160	28741	7810	35578
	19%	19%	5%	19%	3%	19%
grade 1 events	228	205	168	151	92	232
	0%	0%	0%	0%	0%	0%
grade 2 events	6394	6753	39037	8405	24751	11896
	4%	4%	17%	5%	11%	6%
grade 3 events	2097	2244	3286	2183	5331	4382
	1%	1%	1%	1%	2%	2%
grade 4 events	2175	2228	2937	2181	5281	4221
	1%	1%	1%	1%	2%	2%
grade 5 events	4592	5021	8707	5197	10022	6757
	3%	3%	3%	3%	4%	3%
grade 6 events	4123	4011	64871	4840	64803	10322
	2%	2%	28%	3%	30%	5%
grade 7 events	94916	89316	92720	93482	91616	104753
	66%	65%	41%	64%	43%	58%

2.2 Compared Parameters

Parameter	Planned	Actual	Parameter	Planned	Actual
Instrument	ACIS	ACIS	Obspar format version number	6	6
Detector	ACIS-235678	ACIS-235678	Obspar file type	PREDICTED	ACTUAL
Grating	NONE	NONE	Obspar update status	NONE	UPDATED
Data mode	FAINT	FAINT	On-chip summing requested	N	N
Observation mode	POINTING	POINTING	Subarray requested	NONE	NONE
Pointing RA	240.469849	240.4991223434185	Alternating exposures requested	N	N
Pointing Dec	-37.529296	-37.54356037318618	Primary exposure time	0.000000	3.2
Pointing Roll	297.417140	297.5916221138793			
SIM focus pos (mm)	-0.684267	-0.6828225247311905			
SIM defocus (mm)	0	0.001444936568705701			
SIM translation stage pos (mm)	-190.132523	-190.1425803651734			
SIM translation stage offset (mm)	0	0.01005778216563158			
Observation start time	235294650.184000	235293608.98897			
Observation start date	2005-06-16T07:36:26	2005-06-16T07:20:08			
Observation end time	235309500.184000	235309723.0147			
Observation end date	2005-06-16T11:43:56	2005-06-16T11:48:43			
Read mode	TIMED	TIMED			

2.3 Aspect



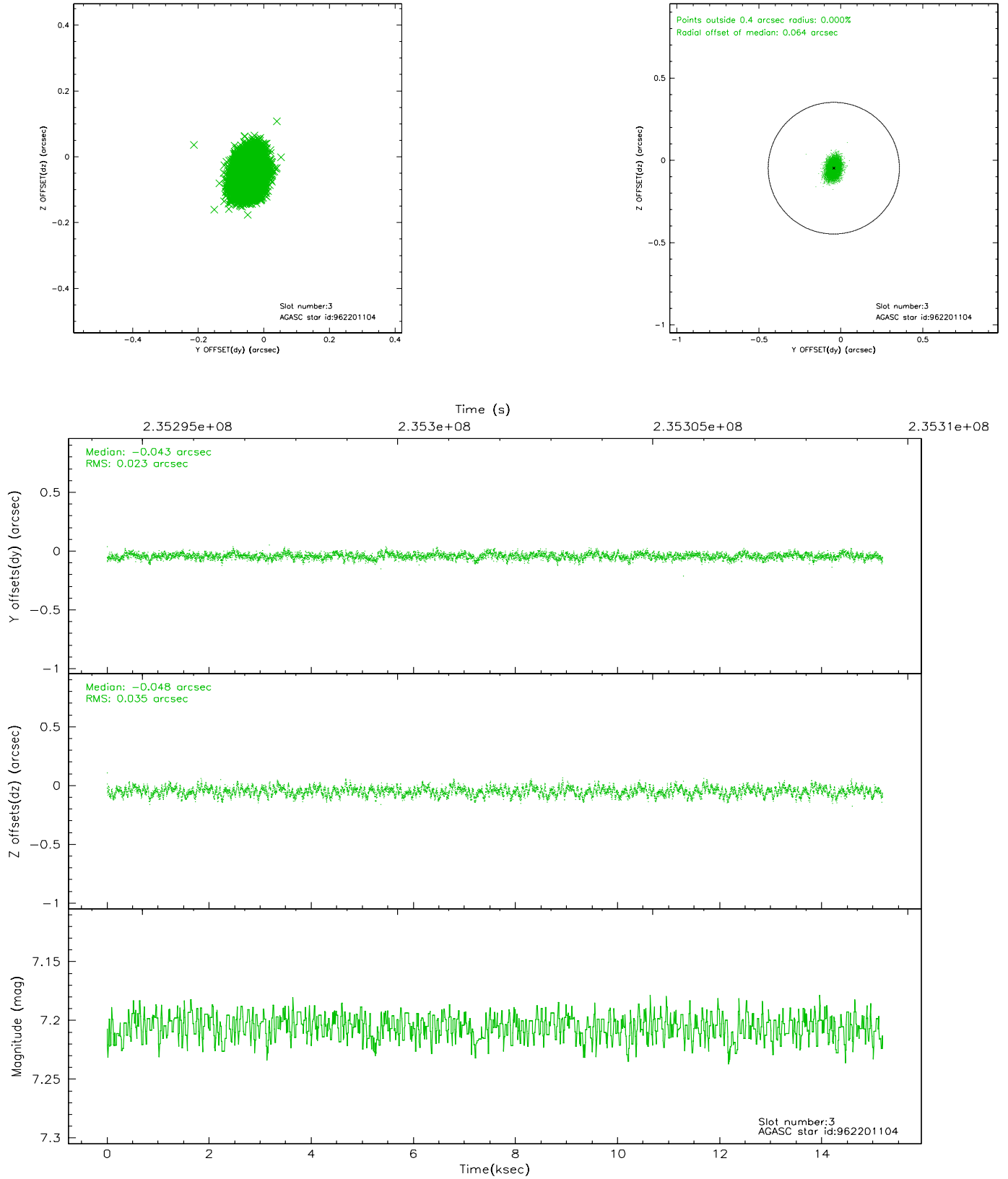


Slot Statistics

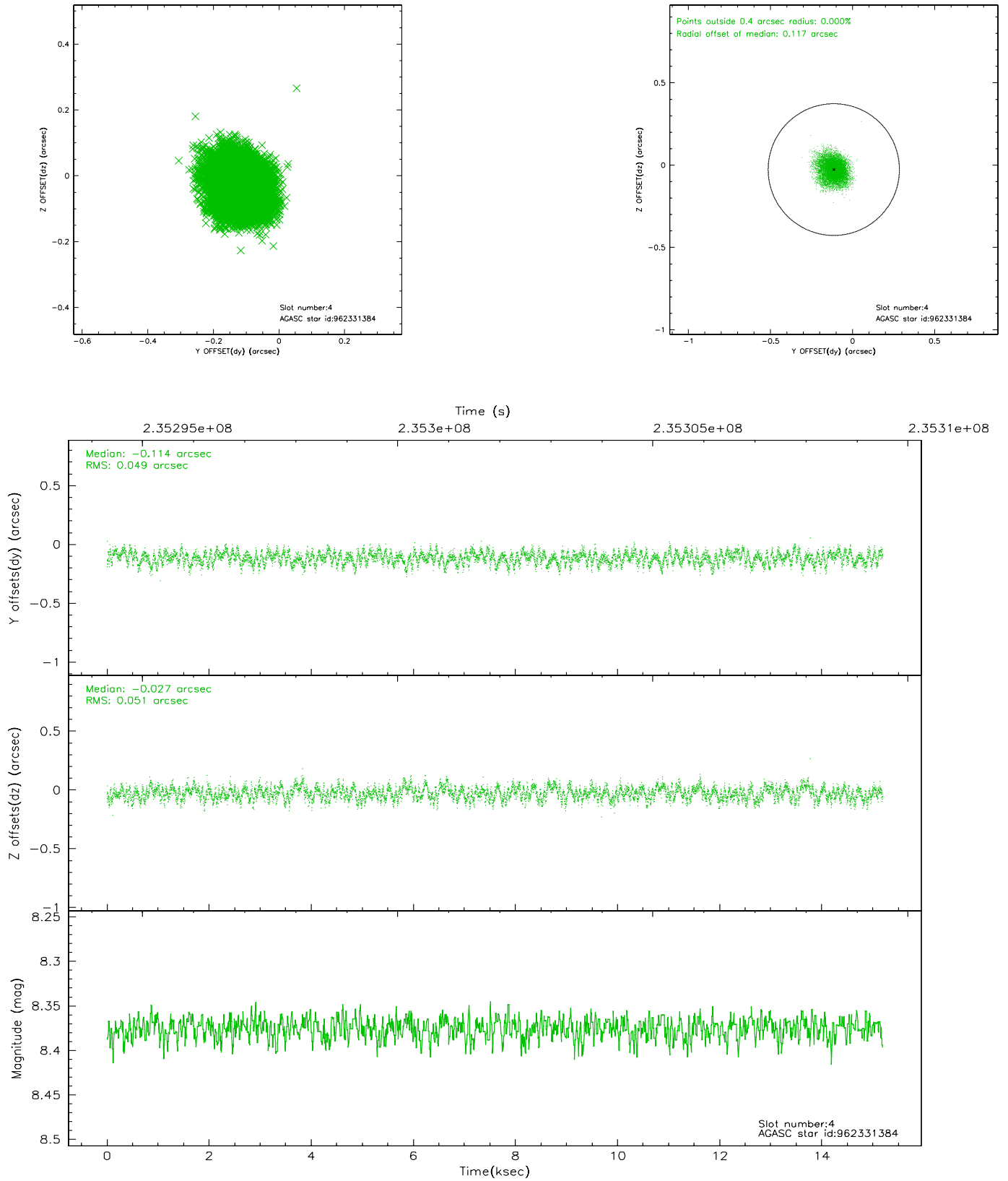
slot	status	id	mag	n_pts	med_dy	med_dz	dr1	dr2	ra	dec	mean_y	mean_z
0	FID	ACIS-S-2	7.10	3706	-0.045	-0.009	0.008	0.014	0.000000	0.000000	-759.98	-1731.37
1	FID	ACIS-S-4	7.20	3706	0.072	0.024	0.005	0.009	0.000000	0.000000	2153.24	176.90
2	FID	ACIS-S-5	7.23	3706	-0.058	-0.006	0.007	0.012	0.000000	0.000000	-1812.50	170.79
3	GUIDE	962201104	7.21	7410	-0.043	-0.048	0.045	0.075	240.588875	-37.467815	-39.57	403.69
4	GUIDE	962331384	8.38	7409	-0.114	-0.027	0.076	0.120	241.076726	-37.345528	217.43	1843.89
5	GUIDE	962331472	9.38	7407	0.067	0.081	0.111	0.178	241.074167	-37.183657	-301.34	2109.32
6	GUIDE	1029053360	8.36	7411	0.001	-0.036	0.059	0.094	240.932925	-37.897257	1784.61	556.68
7	GUIDE	962200272	8.74	7408	0.089	0.034	0.068	0.111	240.045417	-37.273978	-1372.77	-657.41

2.4 Star Slots

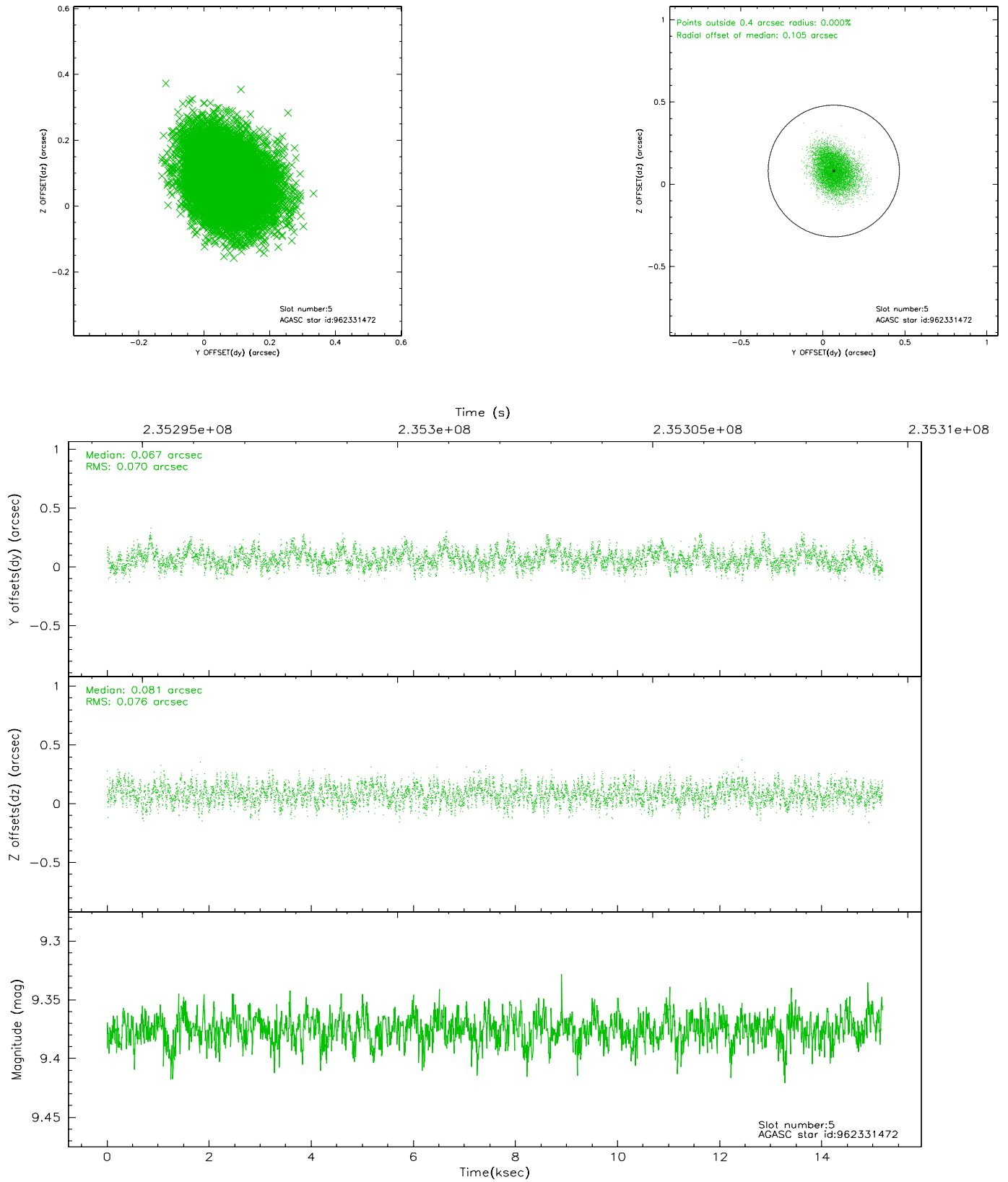
2.4.1 Slot 3



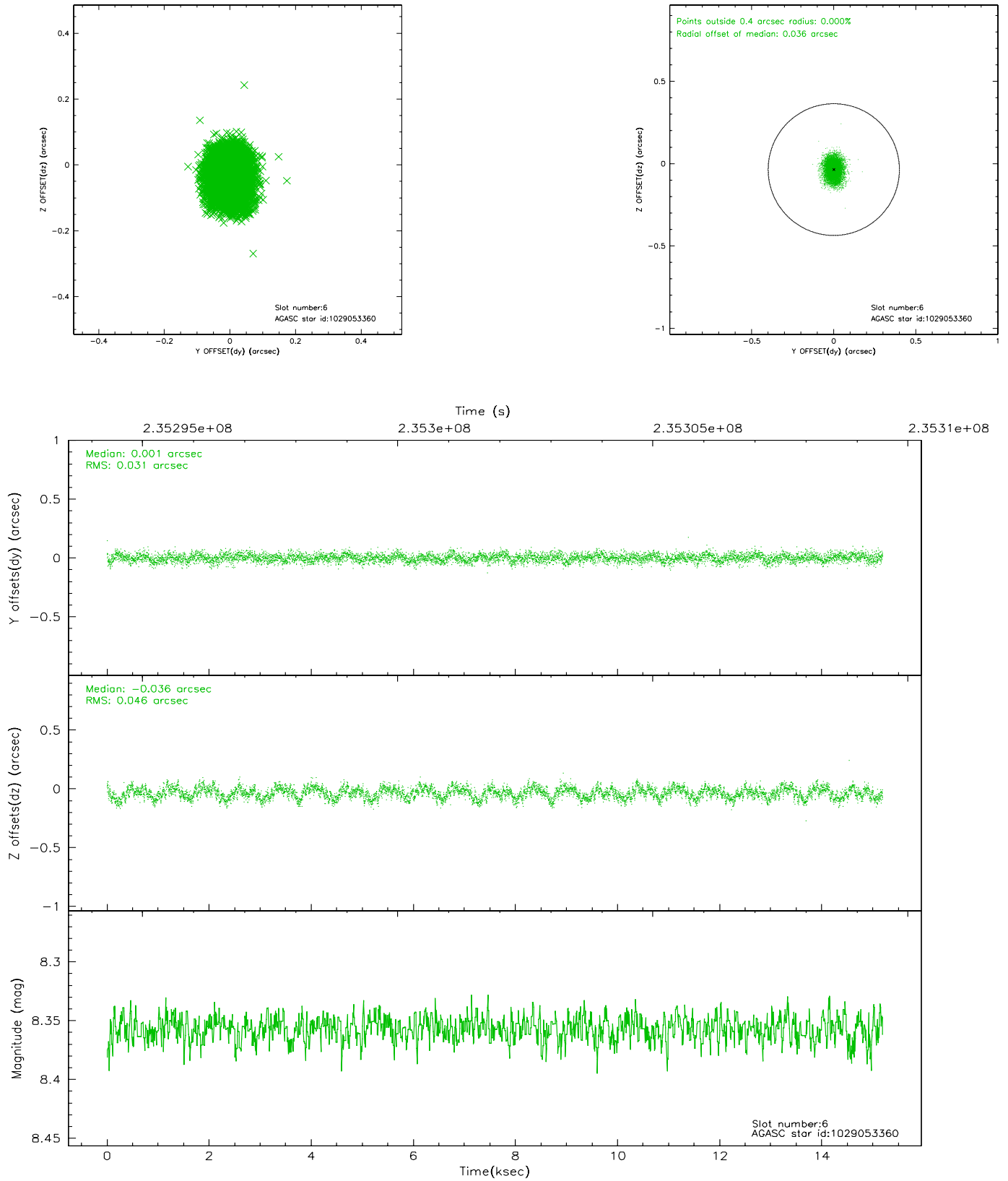
2.4.2 Slot 4



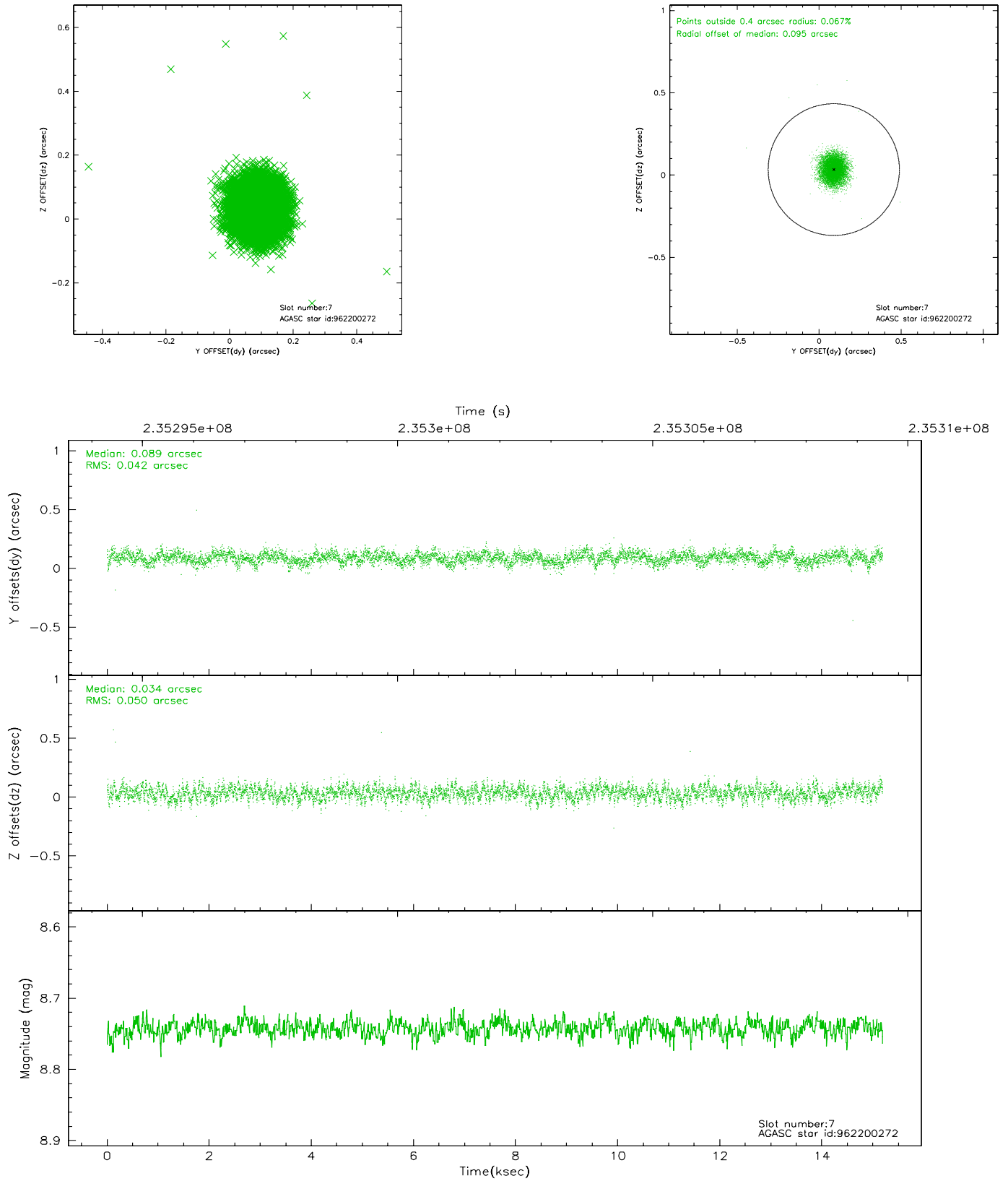
2.4.3 Slot 5



2.4.4 Slot 6

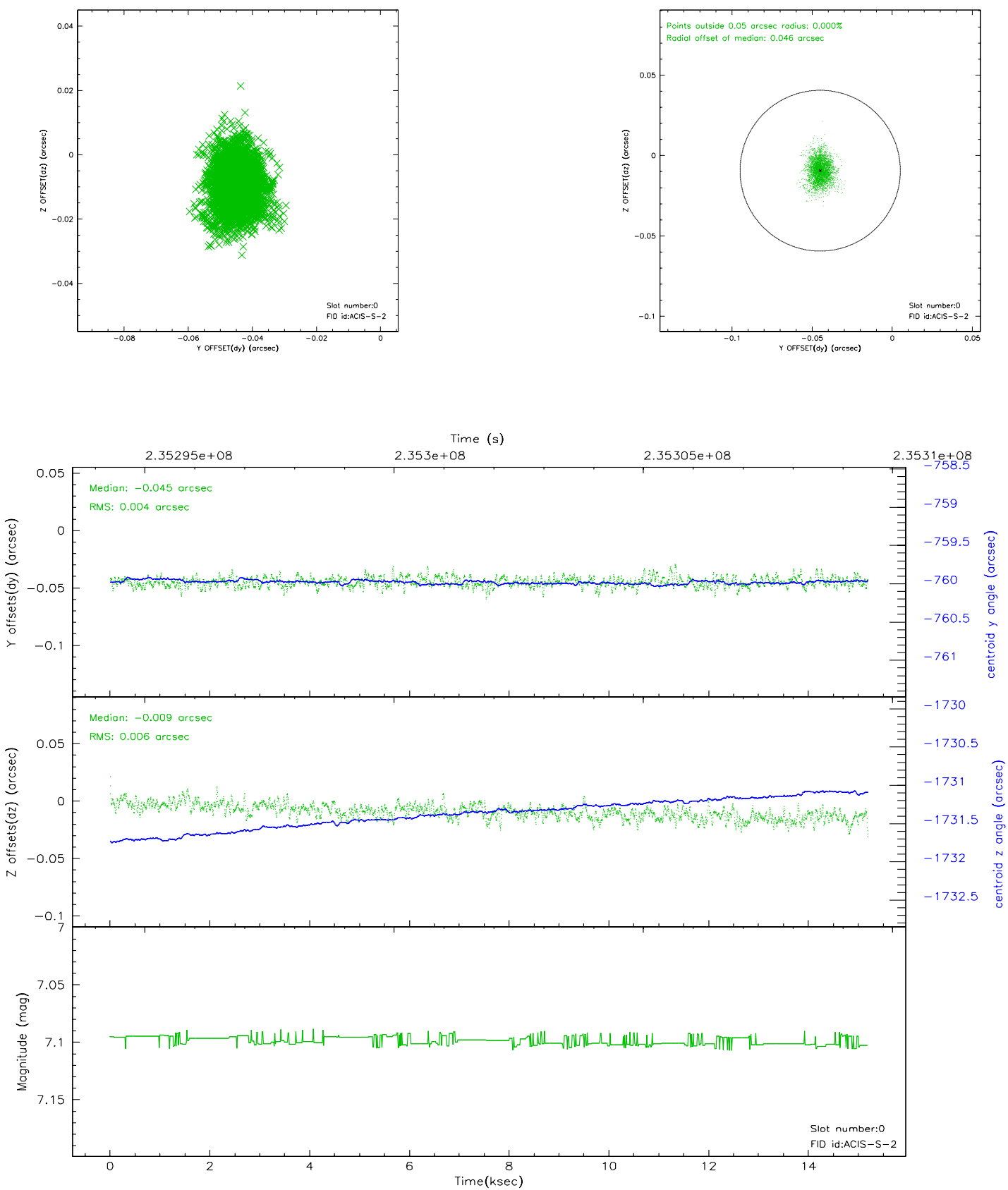


2.4.5 Slot 7

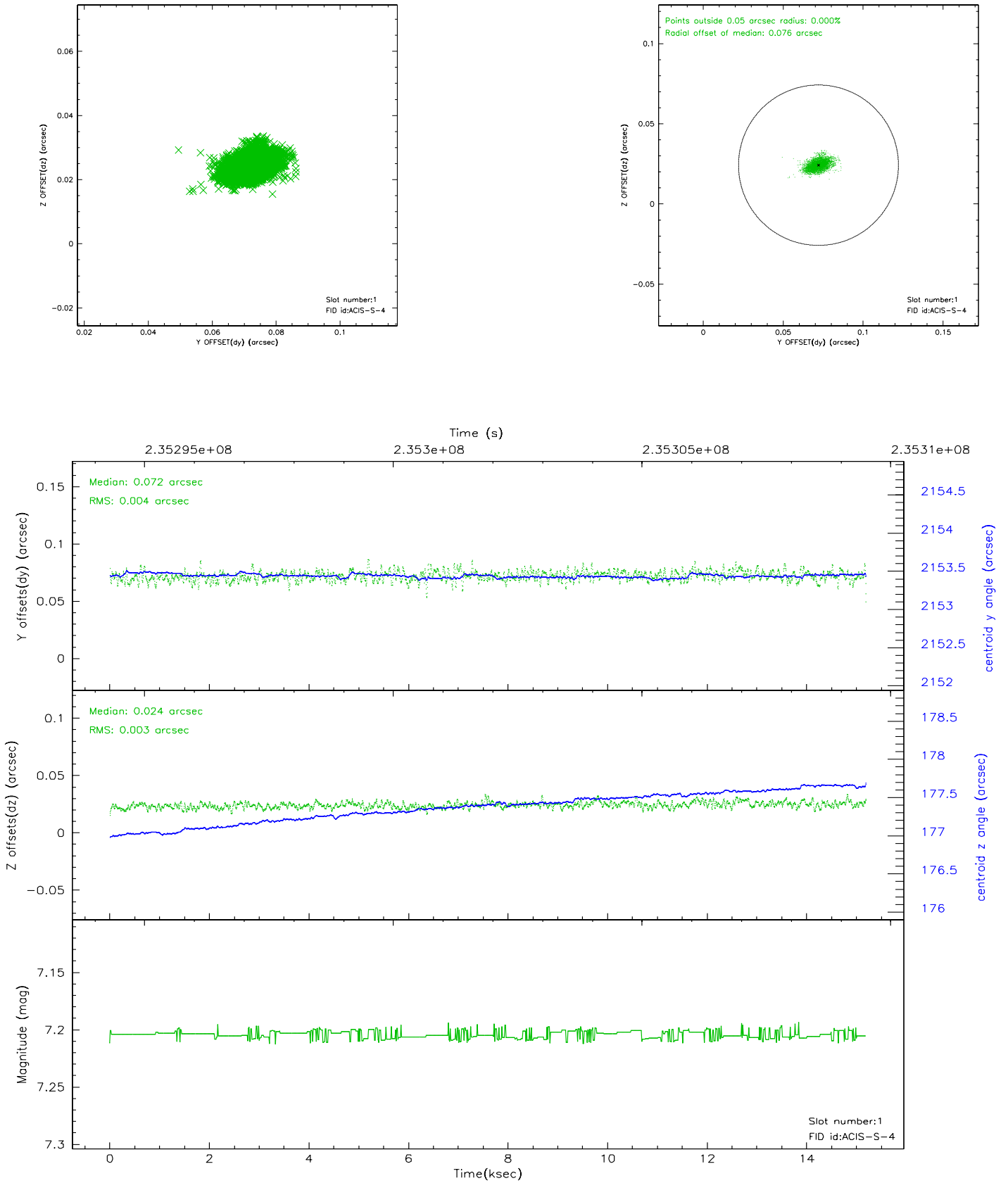


2.5 FID Slots

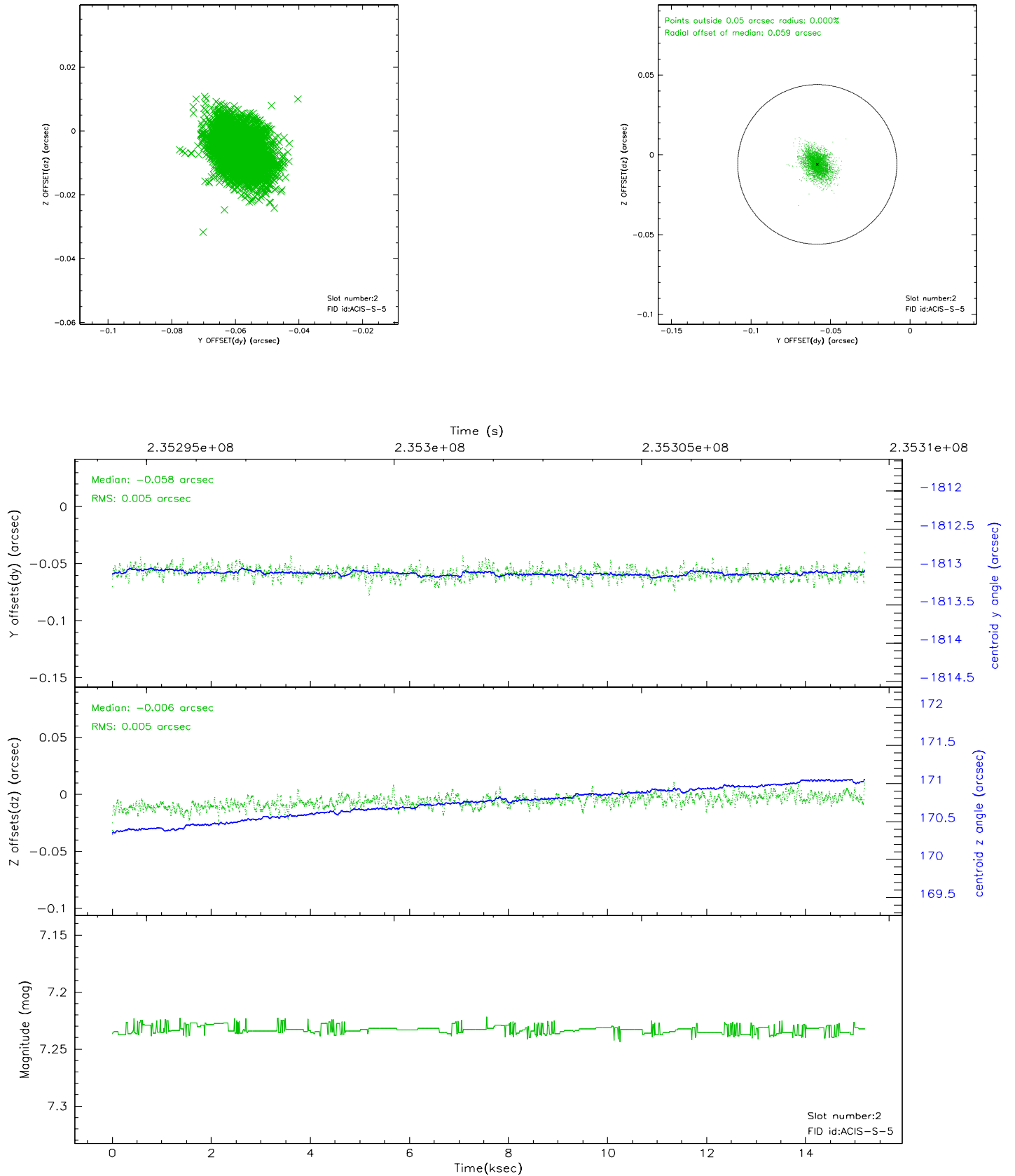
2.5.1 Slot 0



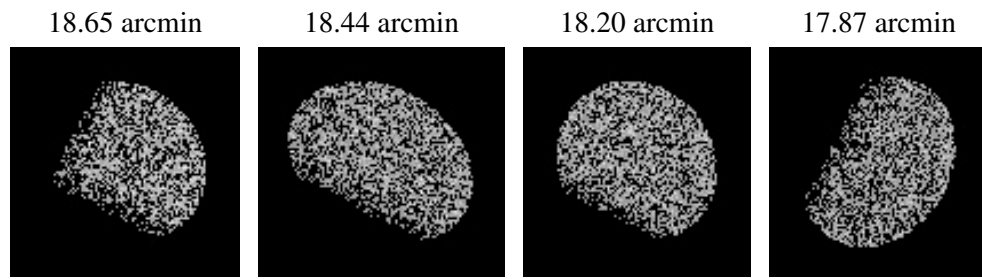
2.5.2 Slot 1



2.5.3 Slot 2



3 Point Sources



A Summary

A.1 Status

V&V Scientist	Beth Sundheim
V&V Date (YYYY-MM-DD)	2006.03.10
V&V Edition	1
V&V Disposition and Status	OK
V&V Charge Time	14.80959

A.2 Comments