

# V&V Reference Report

## L2 ASCDS Version : 7.6.7

Observation 5382 - L2 Version 002  
Chandra X-Ray Center

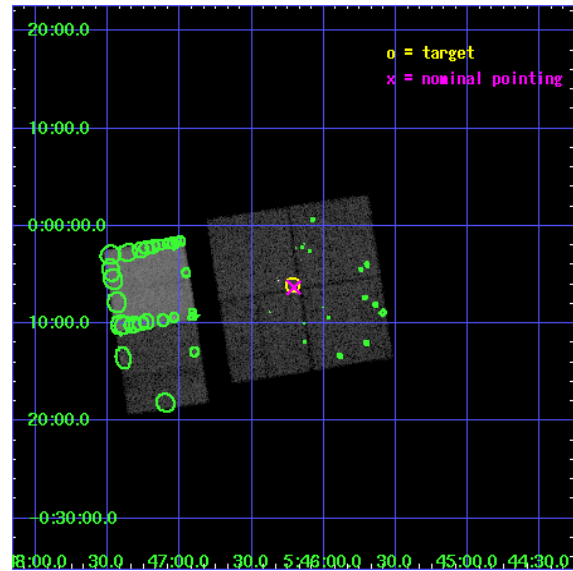
L2 Processing Date: Feb 28 2006

## Contents

<b>1</b>	<b>Front</b>	<b>2</b>
<b>2</b>	<b>OBI</b>	<b>3</b>
2.1	OBI . . . . .	3
2.1.1	Images . . . . .	3
2.1.2	Bias . . . . .	3
2.1.3	Parameters . . . . .	4
2.1.4	Events . . . . .	4
2.2	Compared Parameters . . . . .	5
2.3	Aspect . . . . .	6
2.4	Star Slots . . . . .	9
2.4.1	Slot 3 . . . . .	9
2.4.2	Slot 4 . . . . .	10
2.4.3	Slot 5 . . . . .	11
2.4.4	Slot 6 . . . . .	12
2.4.5	Slot 7 . . . . .	13
2.5	FID Slots . . . . .	14
2.5.1	Slot 0 . . . . .	14
2.5.2	Slot 1 . . . . .	15
2.5.3	Slot 2 . . . . .	16
<b>3</b>	<b>Point Sources</b>	<b>17</b>
<b>A</b>	<b>Summary</b>	<b>18</b>
A.1	Status . . . . .	18
A.2	Comments . . . . .	18

# 1 Front

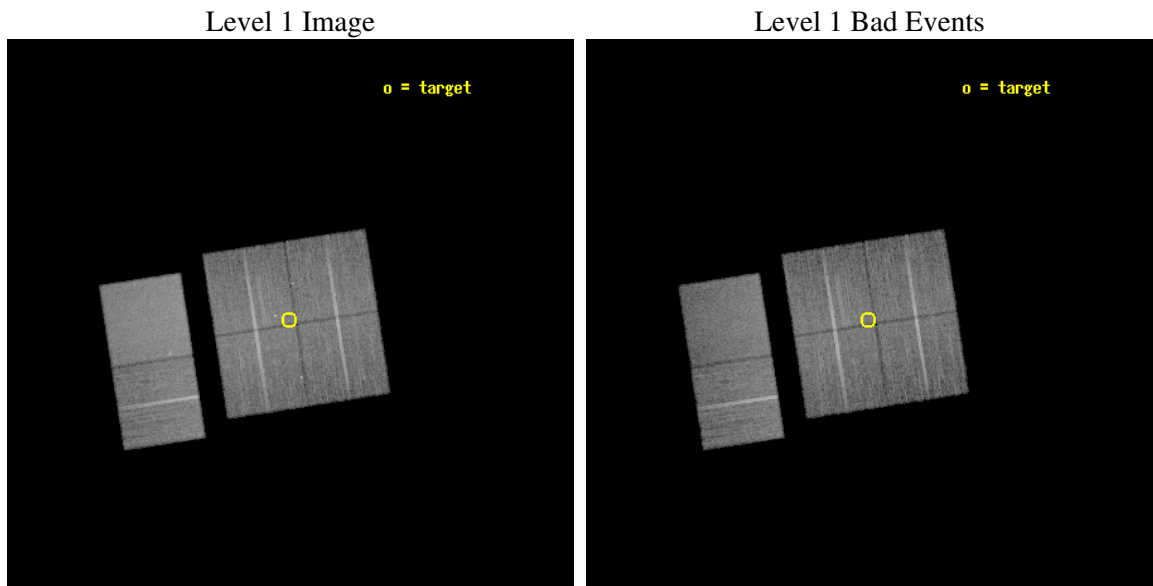
seq_num	200317
obs_id	5382
title	X-ray Imaging of McNeil's Star: Witnessing the Onset of an Accretion Burst
observer	Prof. Joel Kastner
object	IRAS05436-0007
dtcycle	0
cycle	P
ra_targ	86.554583
dec_targ	-0.101389
ra_nom	86.552153121373
dec_nom	-0.10530029364544
roll_nom	261.22141398775
revision	2
ontime	18441.5999313
livetime	18208.081288771
ontime0	18438.358951002
ontime1	18441.5999313
ontime2	18441.5999313
ontime3	18441.5999313
ontime6	18441.5999313
ontime7	18441.5999313
l2events	148206



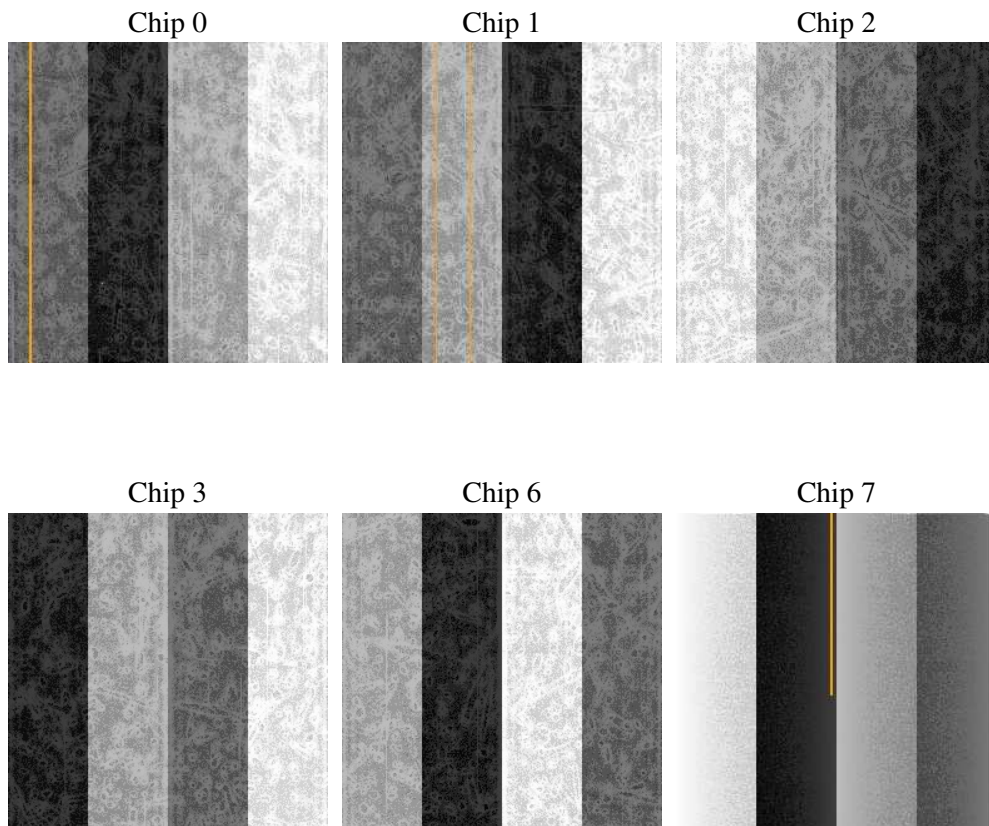
## 2 OBI

### 2.1 OBI

#### 2.1.1 Images



#### 2.1.2 Bias



### 2.1.3 Parameters

obi_num	0
ascdsver	7.6.7
caldsver	3.2.1
date	2006-02-28T18:04:46
revision	2

sched_exp_time	18304.407000
ontime	18755.689312518
ontime0	18752.44833222
ontime1	18755.689312518
ontime2	18755.689312518
ontime3	18755.689312518
ontime6	18755.689312518
ontime7	18755.689312518
l1events	894502

### 2.1.4 Events

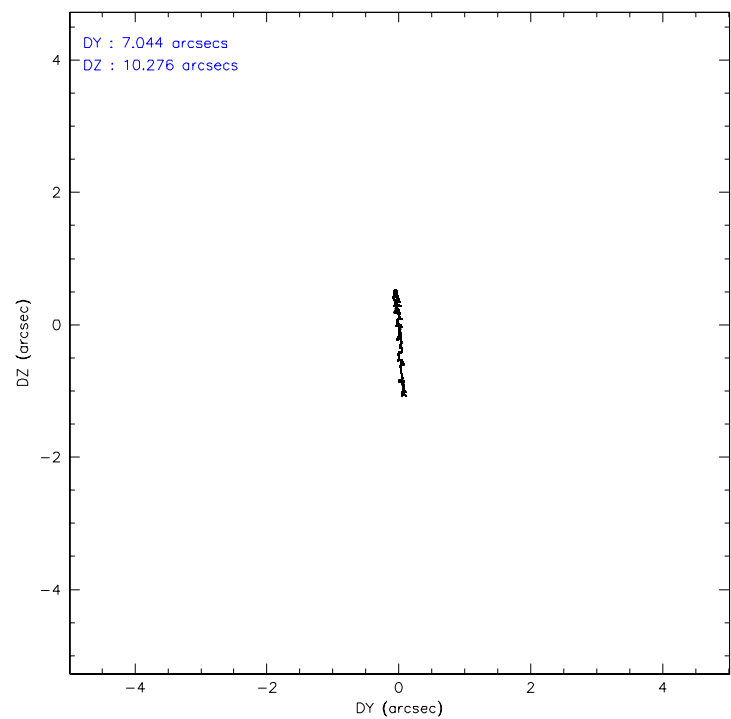
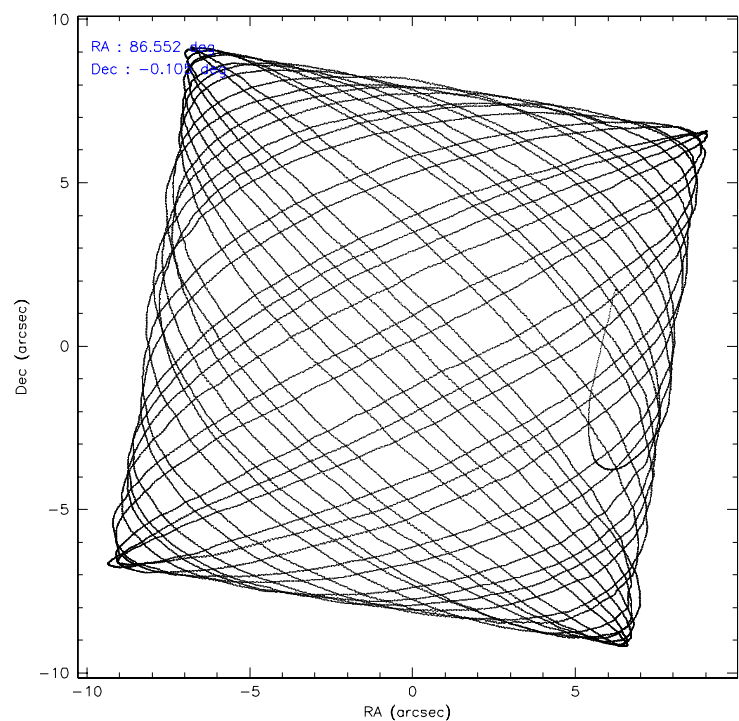
	ccd 0	ccd 1	ccd 2	ccd 3	ccd 6	ccd 7
level 1 events	129359	134940	141003	144524	149378	195298
rejected events	112222	116567	123603	126617	131945	121684
rejected %	86%	86%	87%	87%	88%	62%

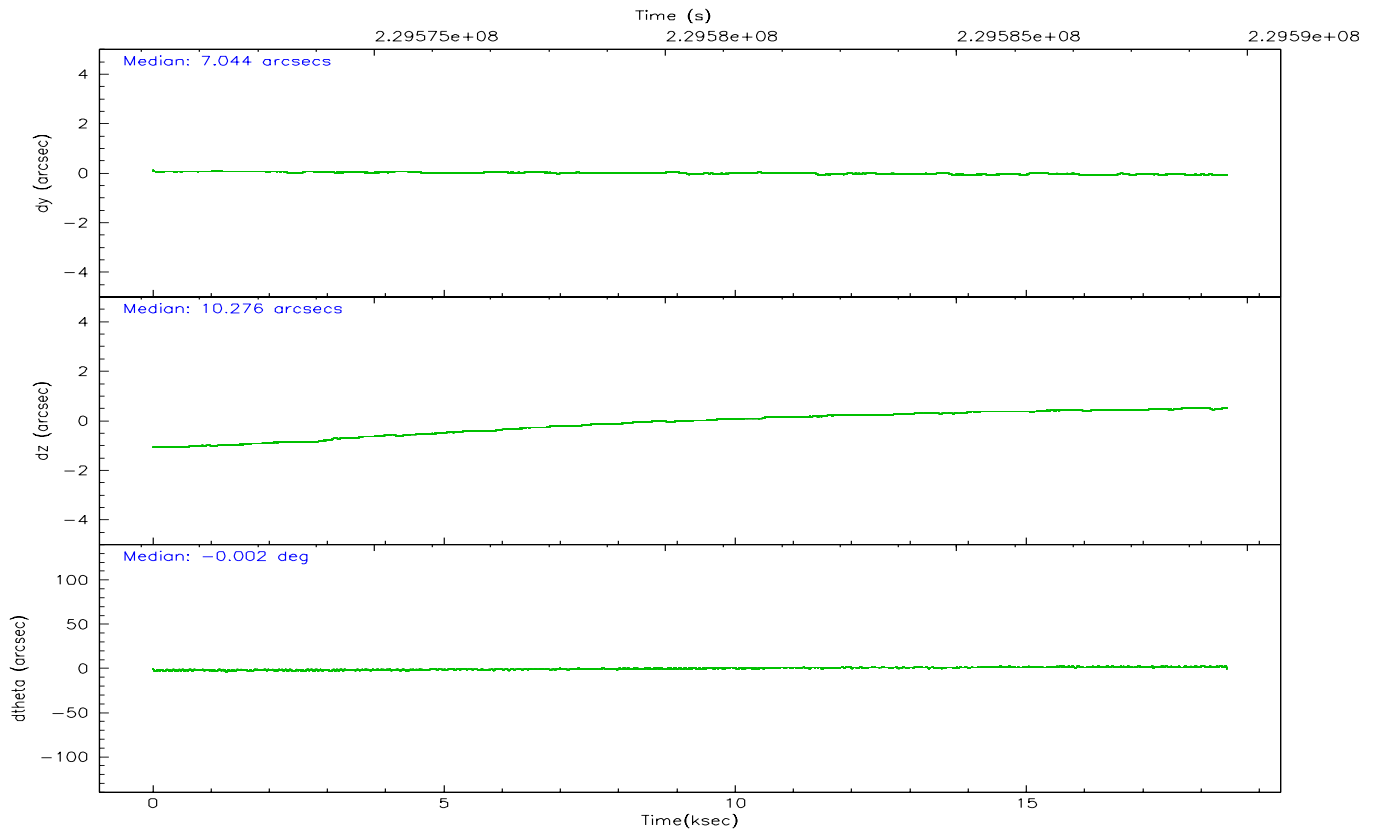
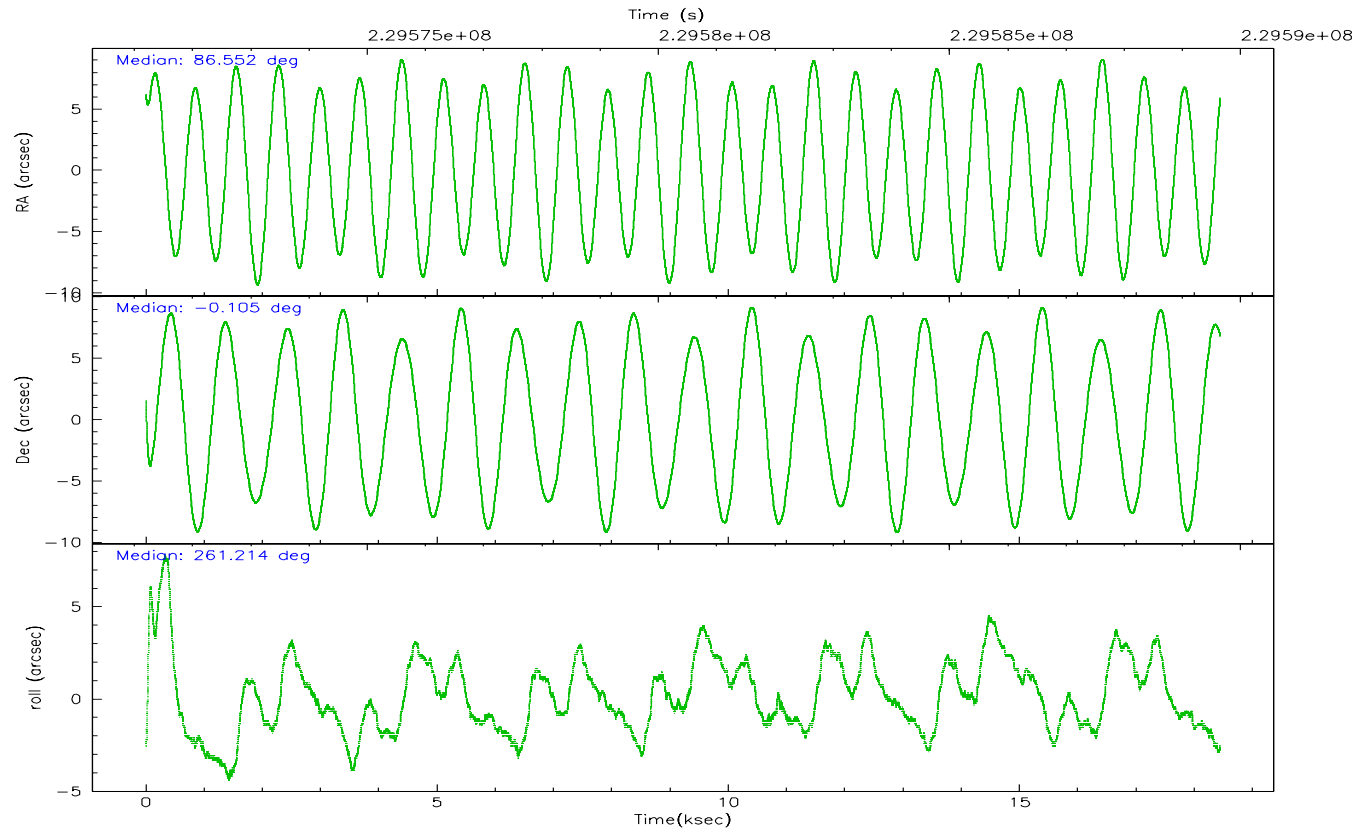
	ccd 0	ccd 1	ccd 2	ccd 3	ccd 6	ccd 7
grade 0 events	7481	7425	8131	8333	7025	4166
	5%	5%	5%	5%	4%	2%
grade 1 events	84	78	82	120	87	122
	0%	0%	0%	0%	0%	0%
grade 2 events	3735	4066	3535	3478	3705	18711
	2%	3%	2%	2%	2%	9%
grade 3 events	1673	1812	1562	1701	1746	3706
	1%	1%	1%	1%	1%	1%
grade 4 events	1579	1743	1599	1692	1695	3632
	1%	1%	1%	1%	1%	1%
grade 5 events	5680	6085	5537	6712	6788	12626
	4%	4%	3%	4%	4%	6%
grade 6 events	2975	3630	2840	2987	3550	44591
	2%	2%	2%	2%	2%	22%
grade 7 events	106152	110101	117717	119501	124782	107744
	82%	81%	83%	82%	83%	55%

## 2.2 Compared Parameters

Parameter	Planned	Actual	Parameter	Planned	Actual
Instrument	ACIS	ACIS	Obspar format version number	6	6
Detector	ACIS-012367	ACIS-012367	Obspar file type	PREDICTED	ACTUAL
Grating	NONE	NONE	Obspar update status	NONE	UPDATED
Data mode	FAINT	FAINT	On-chip summing requested	N	N
Observation mode	POINTING	POINTING	Subarray requested	NONE	NONE
Pointing RA	86.542126	86.55215312137304	Alternating exposures requested	N	N
Pointing Dec	-0.079842	-0.1053002936454391	Primary exposure time	0.000000	3.2
Pointing Roll	261.012724	261.221413987751			
SIM focus pos (mm)	-0.782348	-0.7809083437167272			
SIM defocus (mm)	0	0.001439871863259334			
SIM translation stage pos (mm)	-233.592463	-233.5874344608287			
SIM translation stage offset (mm)	0	-0.005018542100998502			
Observation start time	229571346.184000	229570140.44078			
Observation start date	2005-04-11T01:48:02	2005-04-11T01:29:00			
Observation end time	229589650.184000	229589883.47917			
Observation end date	2005-04-11T06:53:06	2005-04-11T06:58:03			
Read mode	TIMED	TIMED			

2.3 Aspect





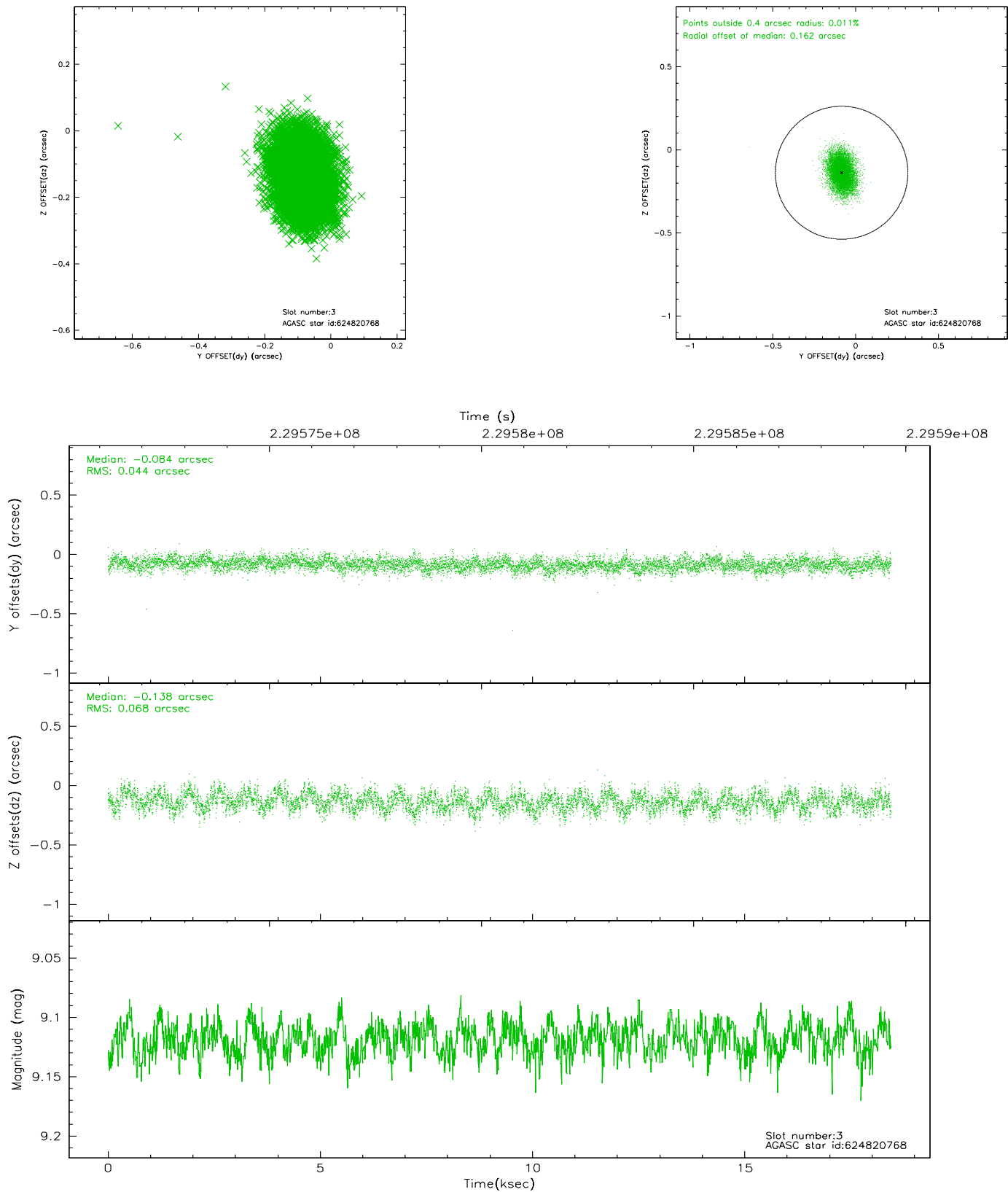
### Slot Statistics

slot	status	id	mag	n_pts	med_dy	med_dz	dr1	dr2	ra	dec	mean_y	mean_z
0	FID	ACIS-I-1	7.24	4499	-0.002	0.016	0.029	0.064	0.000000	0.000000	932.62	-833.61
1	FID	ACIS-I-5	7.23	4499	-0.134	0.025	0.014	0.025	0.000000	0.000000	-1815.48	1063.78
2	FID	ACIS-I-6	7.26	4499	0.046	0.027	0.018	0.046	0.000000	0.000000	398.00	1708.51
3	GUIDE	624820768	9.12	8992	-0.084	-0.138	0.086	0.141	86.202480	-0.061953	127.73	-1218.05
4	GUIDE	624954088	9.61	8952	0.052	-0.005	0.119	0.193	86.606399	-0.671650	2068.45	561.34
5	GUIDE	624956456	8.03	8998	-0.007	0.171	0.070	0.112	87.042614	-0.748935	2098.03	2156.24
6	GUIDE	624954400	9.18	8993	-0.014	-0.136	0.092	0.157	86.607838	-0.762568	2391.09	617.88
7	GUIDE	624952480	7.69	8998	0.048	0.107	0.058	0.096	87.106269	-0.759614	2100.30	2388.52

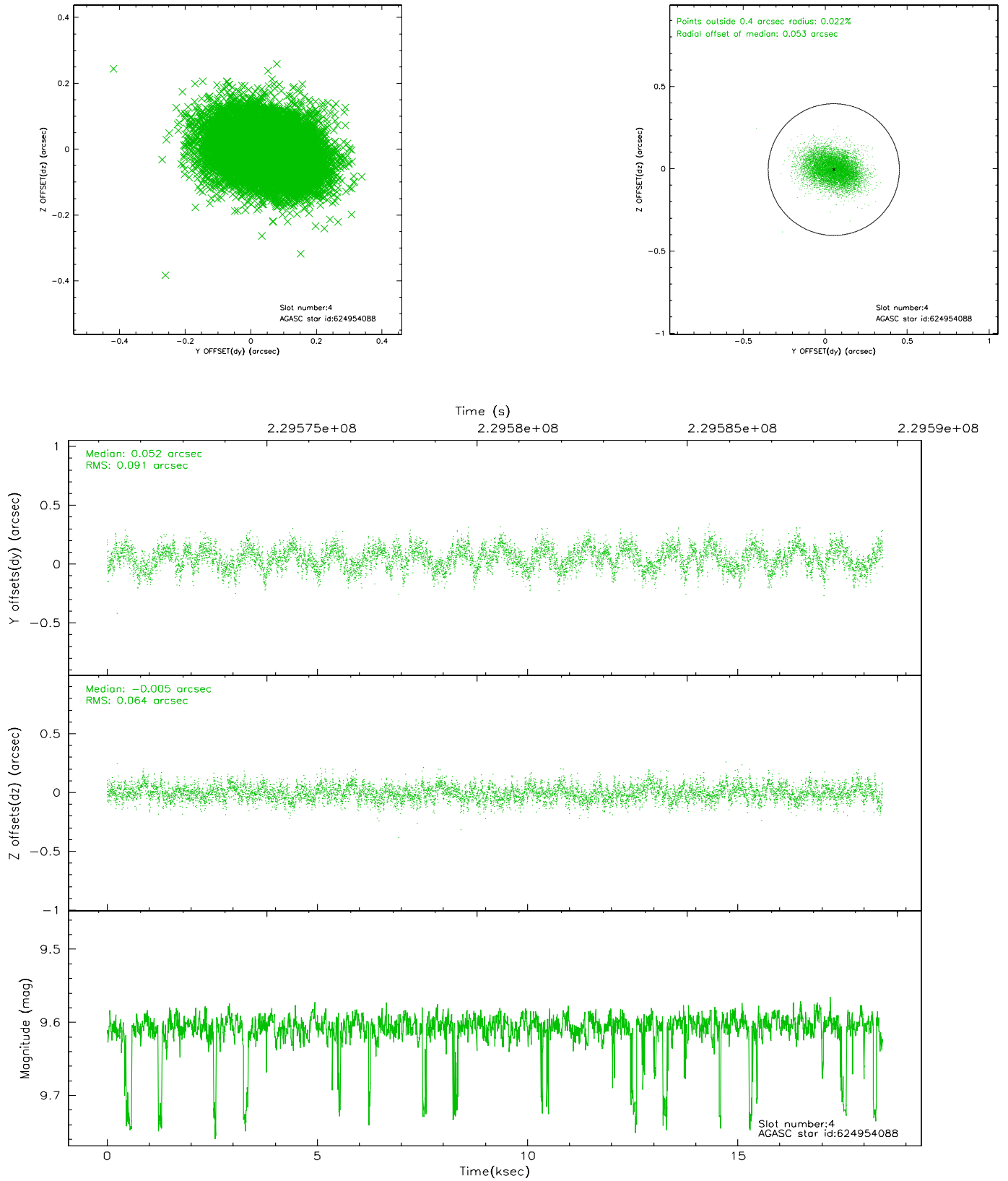


## 2.4 Star Slots

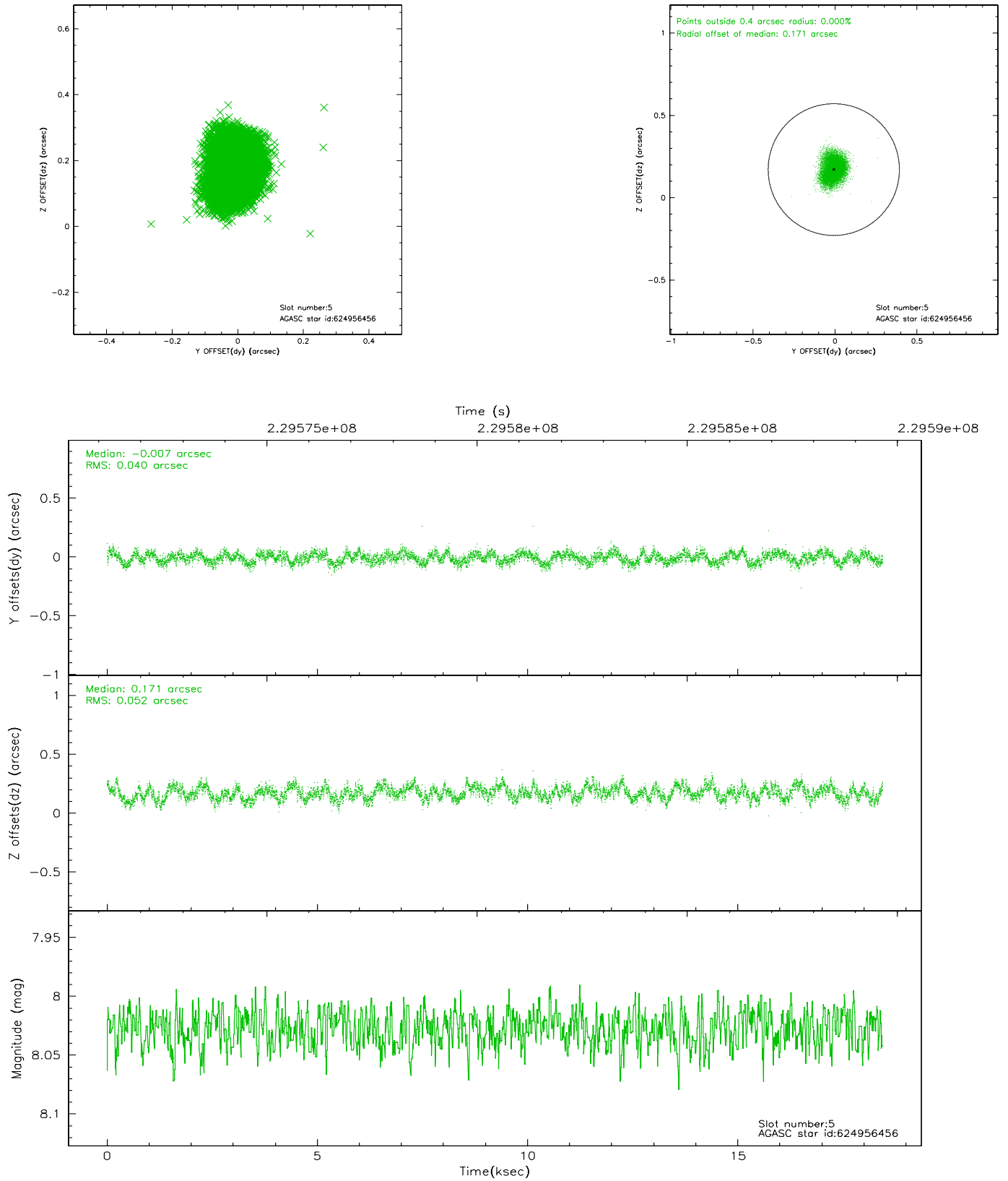
### 2.4.1 Slot 3



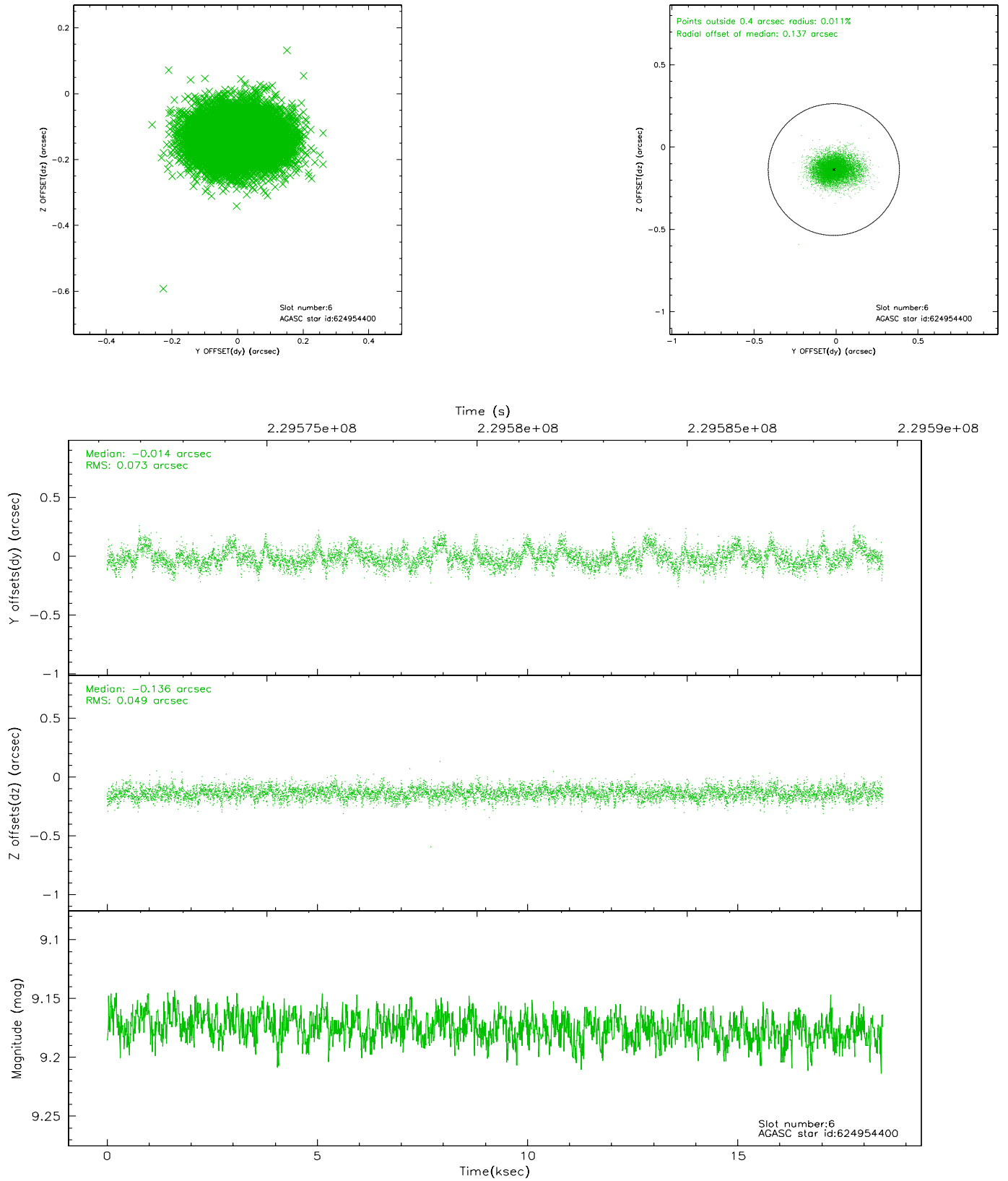
## 2.4.2 Slot 4



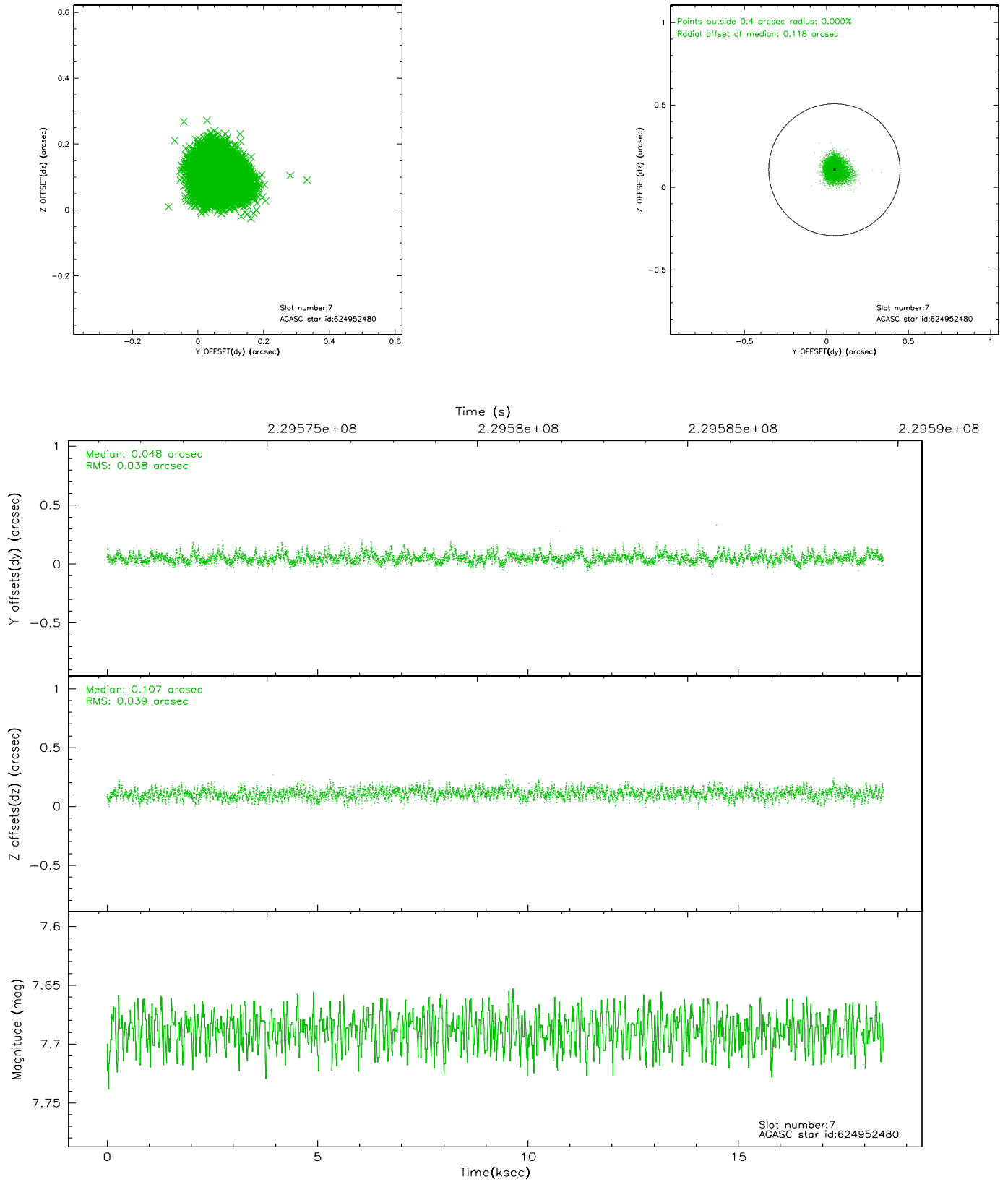
### 2.4.3 Slot 5



## 2.4.4 Slot 6

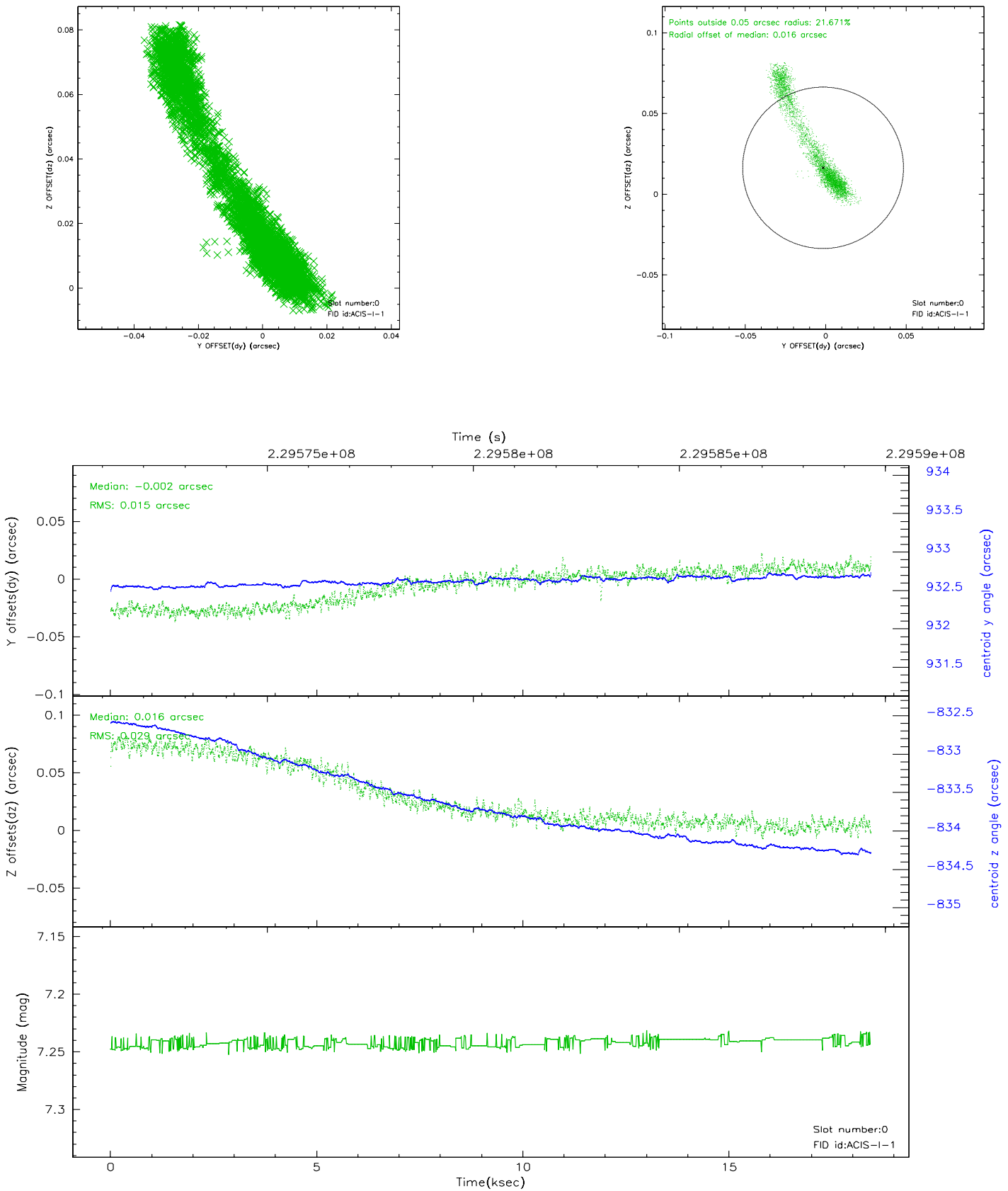


## 2.4.5 Slot 7

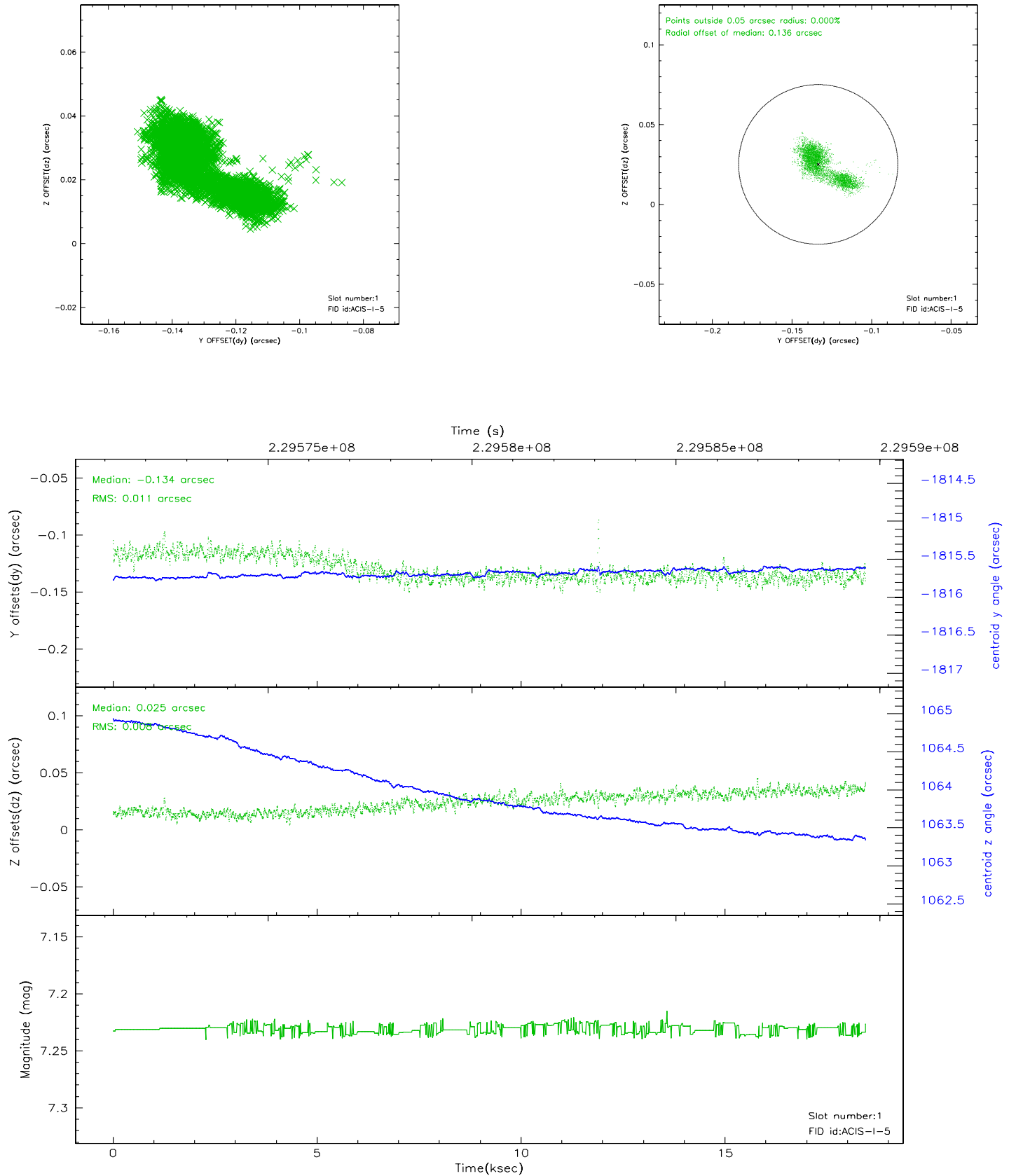


## 2.5 FID Slots

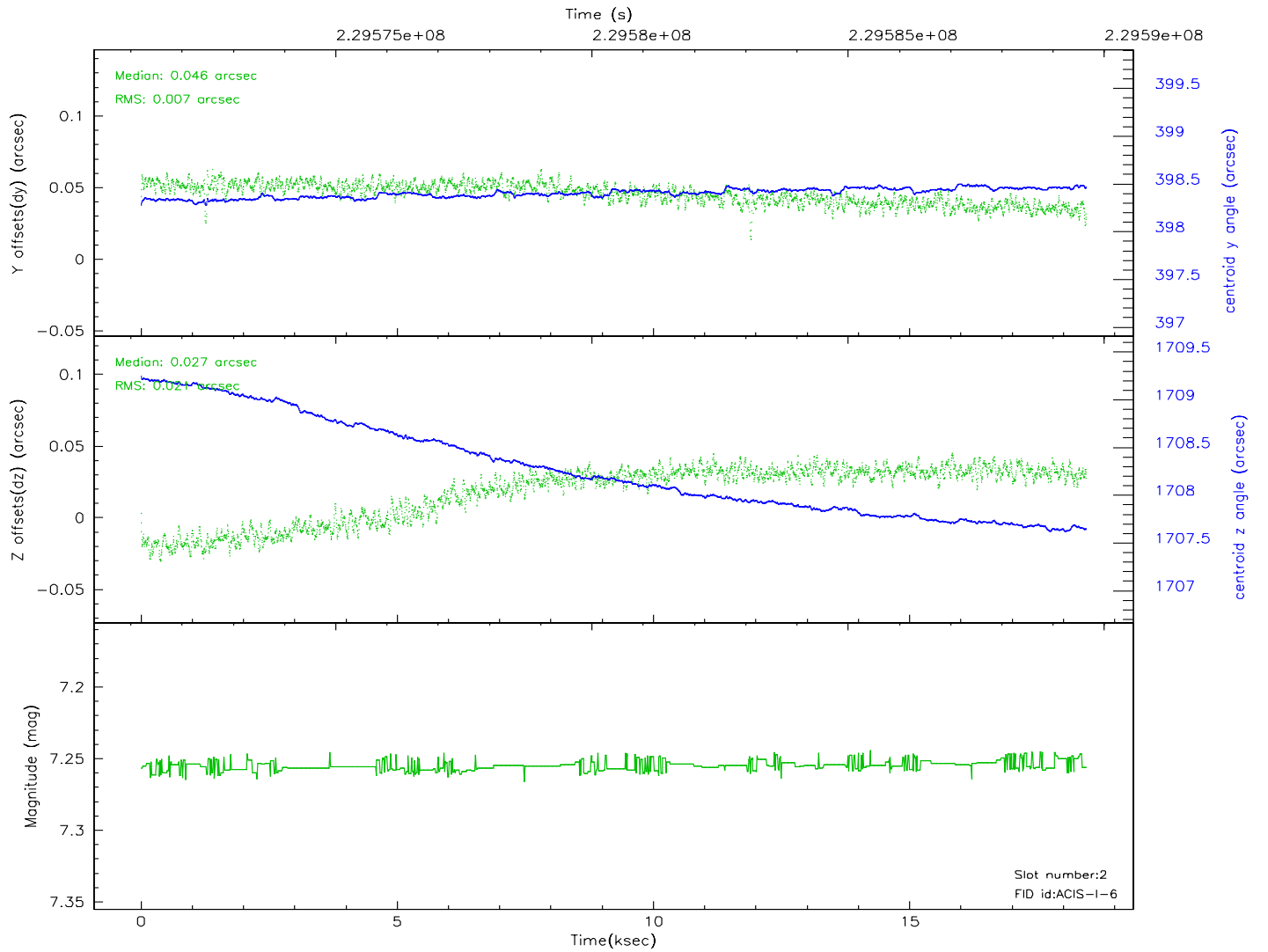
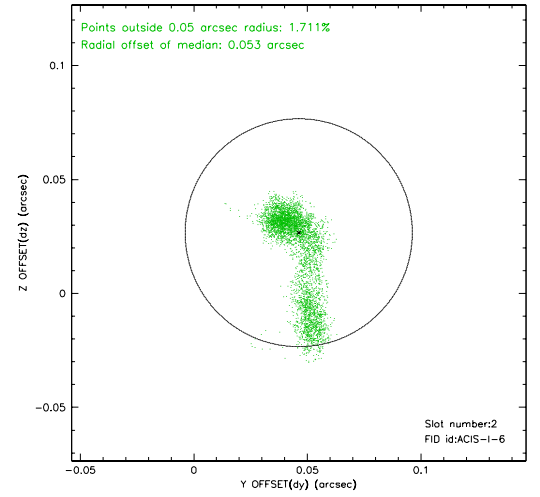
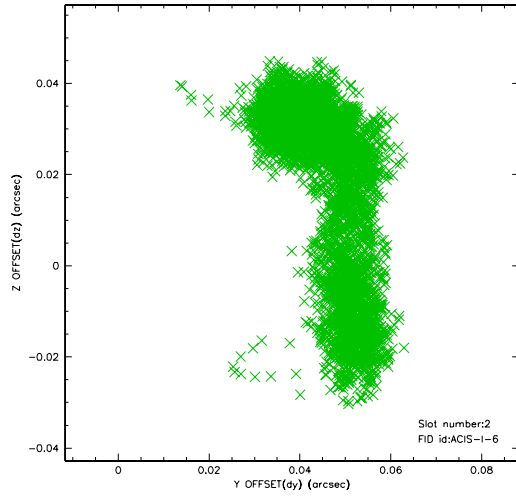
### 2.5.1 Slot 0



## 2.5.2 Slot 1

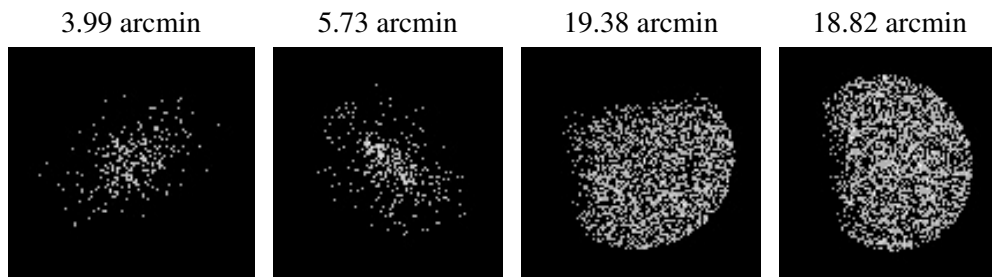


### 2.5.3 Slot 2





### 3 Point Sources



## A Summary

### A.1 Status

V&V Scientist	Beth Sundheim
V&V Date (YYYY-MM-DD)	2006.02.28
V&V Edition	1
V&V Disposition and Status	OK
V&V Charge Time	18.44159

### A.2 Comments