

# V&V Reference Report

## L2 ASCDS Version : 7.6.7.1

Observation 5374 - L2 Version 002  
Chandra X-Ray Center

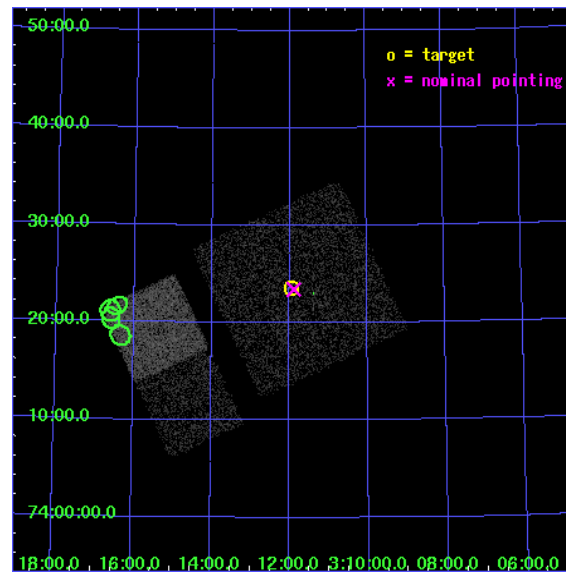
L2 Processing Date : Mar 16 2006

## Contents

<b>1</b>	<b>Front</b>	<b>2</b>
<b>2</b>	<b>OBI</b>	<b>3</b>
2.1	OBI . . . . .	3
2.1.1	Images . . . . .	3
2.1.2	Bias . . . . .	3
2.1.3	Parameters . . . . .	4
2.1.4	Events . . . . .	4
2.2	Compared Parameters . . . . .	5
2.3	Aspect . . . . .	6
2.4	Star Slots . . . . .	9
2.4.1	Slot 3 . . . . .	9
2.4.2	Slot 4 . . . . .	10
2.4.3	Slot 5 . . . . .	11
2.4.4	Slot 6 . . . . .	12
2.4.5	Slot 7 . . . . .	13
2.5	FID Slots . . . . .	14
2.5.1	Slot 0 . . . . .	14
2.5.2	Slot 1 . . . . .	15
2.5.3	Slot 2 . . . . .	16
<b>3</b>	<b>Point Sources</b>	<b>17</b>
<b>A</b>	<b>Summary</b>	<b>18</b>
A.1	Status . . . . .	18
A.2	Comments . . . . .	18

# 1 Front

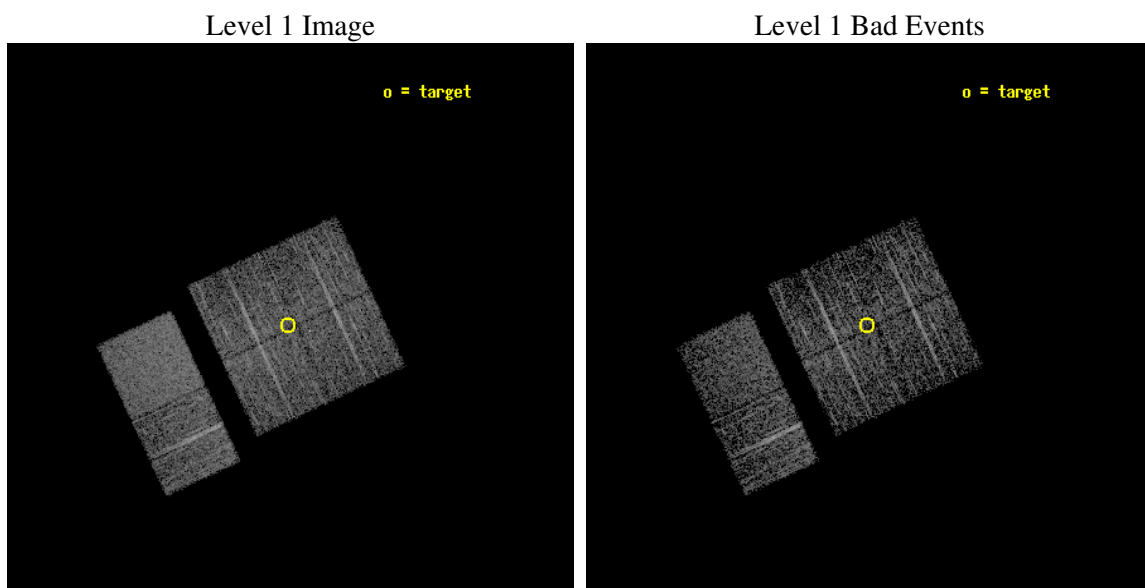
seq_num	200309
obs_id	5374
title	Search for beta Pic analogs
observer	Prof. Gordon Garmire
object	HR 932
dtcycle	0
cycle	P
ra_targ	47.984167
dec_targ	74.393889
ra_nom	47.971694506883
dec_nom	74.390779196834
roll_nom	244.87619030824
revision	2
ontime	2963.1999889612
livetime	2925.6781664762
ontime0	2963.1999889612
ontime1	2963.1999889612
ontime2	2963.1999889612
ontime3	2963.1999889612
ontime6	2963.1999889612
ontime7	2963.1999889612
l2events	21148



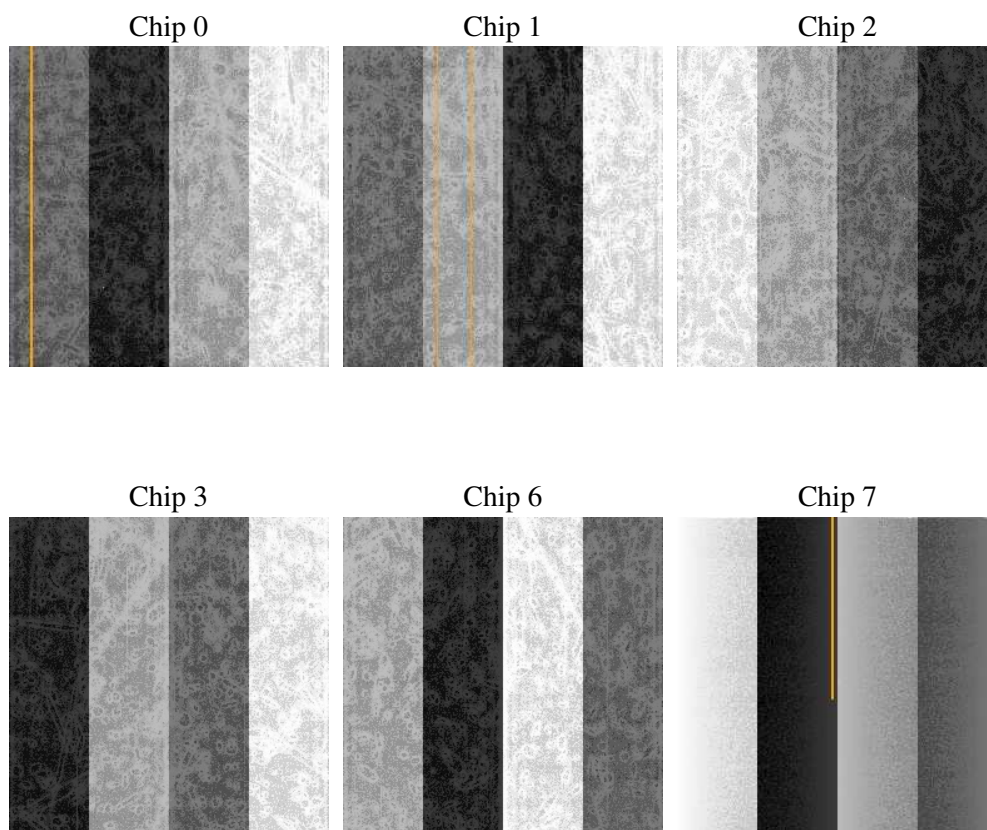
## 2 OBI

### 2.1 OBI

#### 2.1.1 Images



#### 2.1.2 Bias



### 2.1.3 Parameters

obi_num	0
ascdsver	7.6.7.1
caldbver	3.2.1
date	2006-03-16T17:34:39
revision	2

sched_exp_time	3000.000000
ontime	2965.5229338706
ontime0	2965.5229338706
ontime1	2965.5229338706
ontime2	2965.5229338706
ontime3	2965.5229338706
ontime6	2965.5229338706
ontime7	2965.5229338706
l1events	126102

### 2.1.4 Events

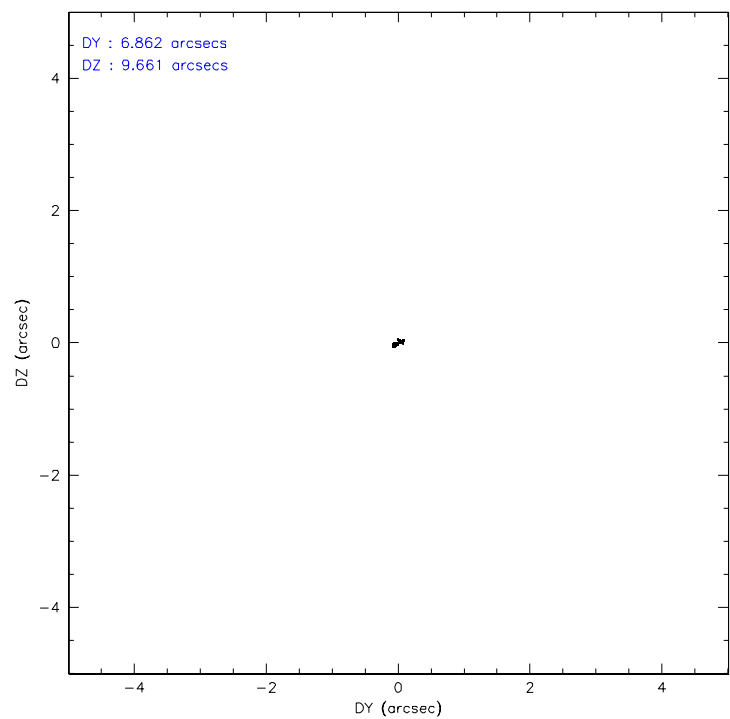
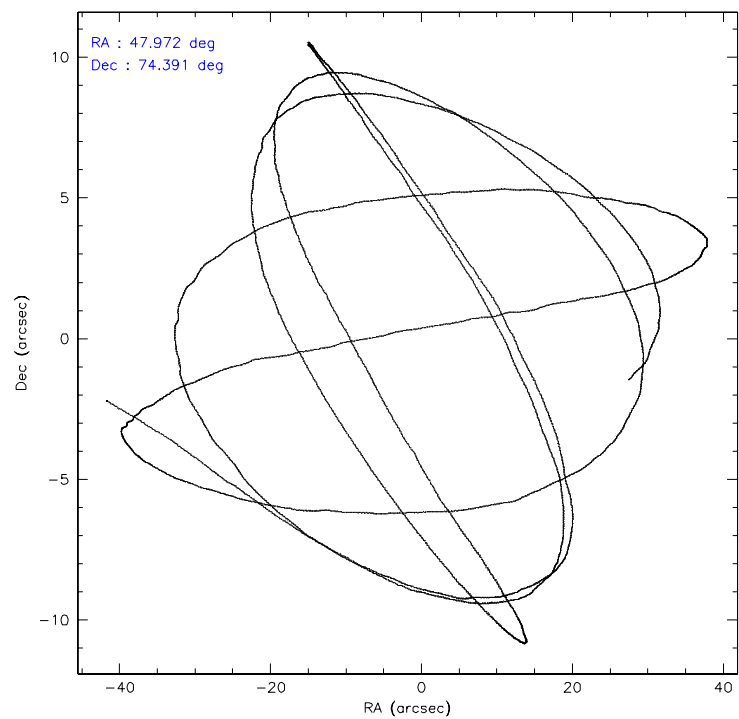
	ccd 0	ccd 1	ccd 2	ccd 3	ccd 6	ccd 7
level 1 events	18742	19036	19908	19915	21208	27293
rejected events	15841	16563	17465	17532	18785	16875
rejected %	84%	87%	87%	88%	88%	61%

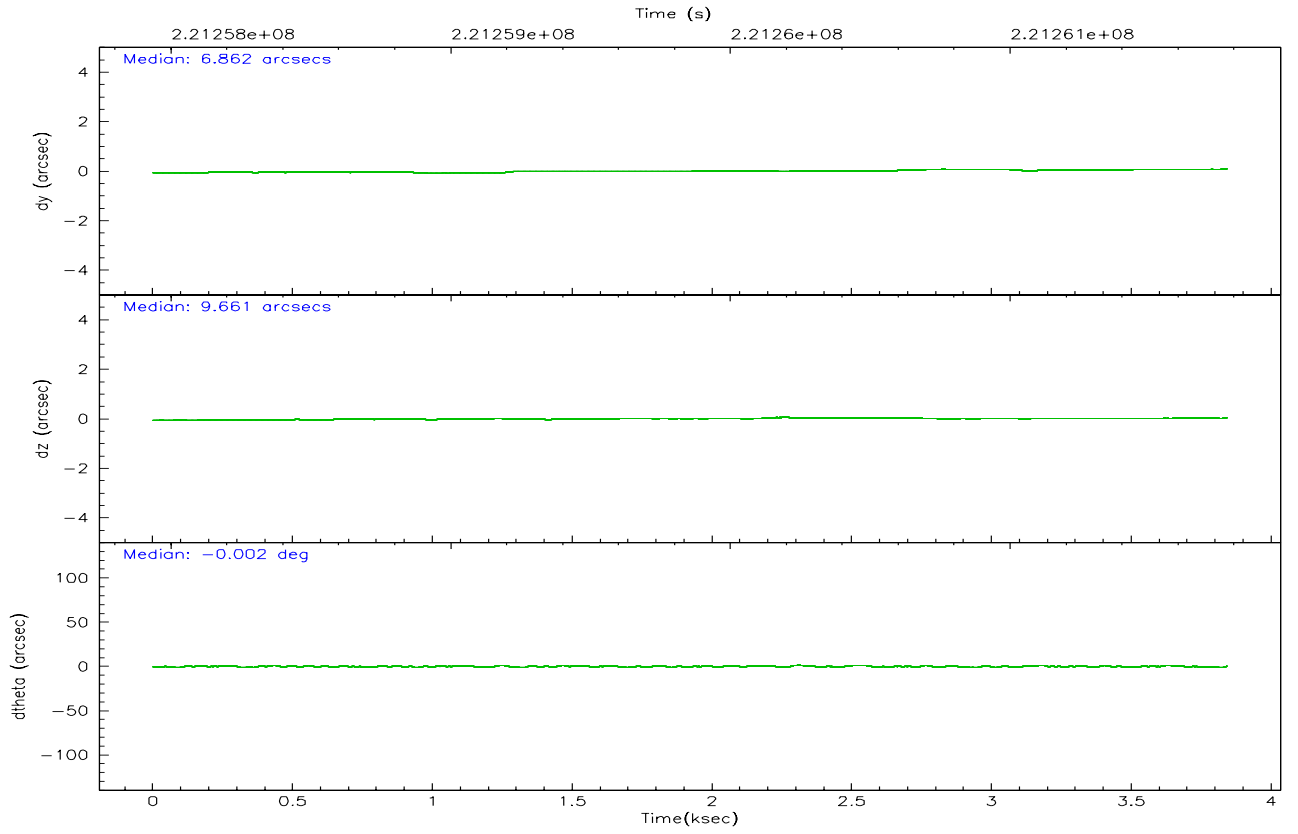
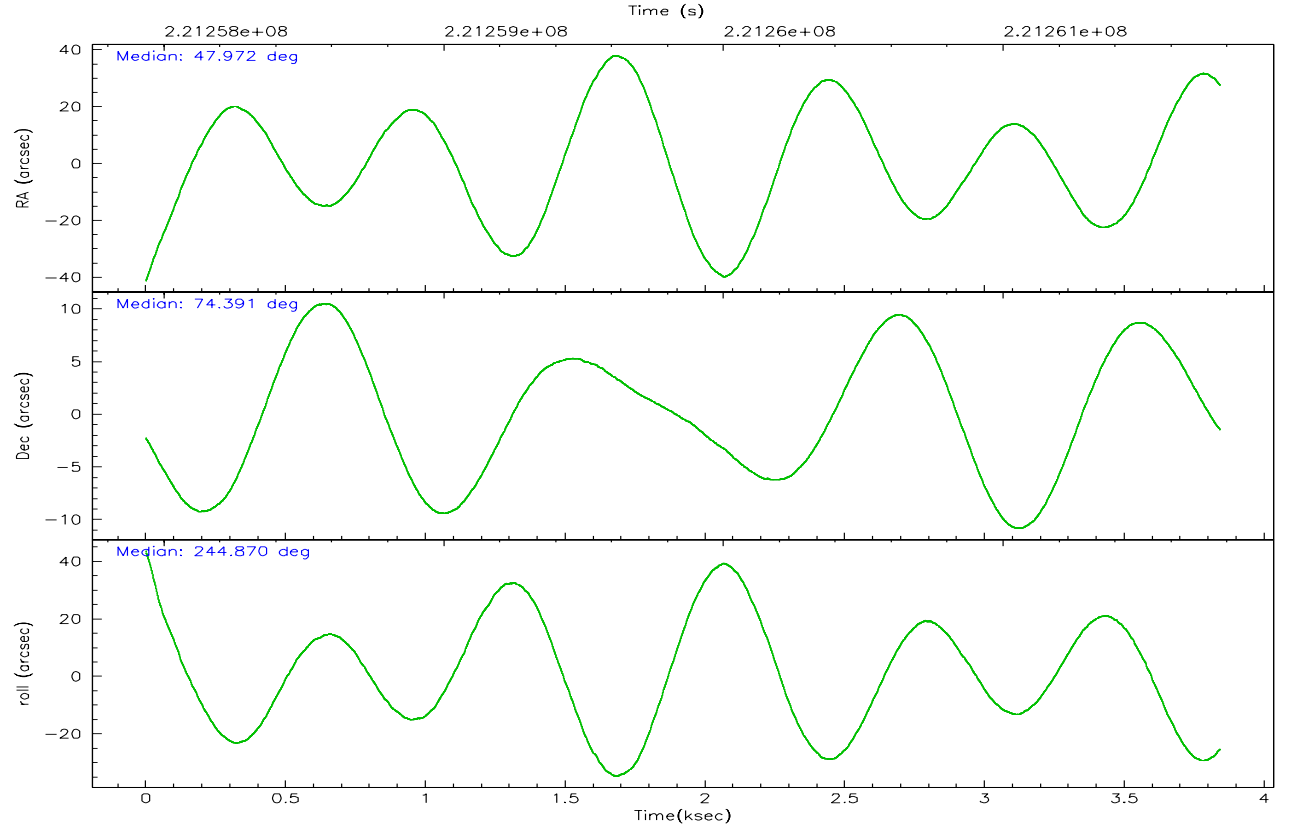
	ccd 0	ccd 1	ccd 2	ccd 3	ccd 6	ccd 7
grade 0 events	1400	939	1075	1039	909	558
	7%	4%	5%	5%	4%	2%
grade 1 events	19	4	23	5	9	17
	0%	0%	0%	0%	0%	0%
grade 2 events	602	593	517	472	501	2585
	3%	3%	2%	2%	2%	9%
grade 3 events	275	229	248	208	268	525
	1%	1%	1%	1%	1%	1%
grade 4 events	196	273	210	248	246	495
	1%	1%	1%	1%	1%	1%
grade 5 events	868	837	765	881	947	1809
	4%	4%	3%	4%	4%	6%
grade 6 events	429	447	398	416	500	6263
	2%	2%	1%	2%	2%	22%
grade 7 events	14953	15714	16672	16646	17828	15041
	79%	82%	83%	83%	84%	55%

## 2.2 Compared Parameters

Parameter	Planned	Actual	Parameter	Planned	Actual
Instrument	ACIS	ACIS	Obspar format version number	6	6
Detector	ACIS-012367	ACIS-012367	Obspar file type	PREDICTED	ACTUAL
Grating	NONE	NONE	Obspar update status	NONE	UPDATED
Data mode	FAINT	FAINT	On-chip summing requested	N	N
Observation mode	POINTING	POINTING	Subarray requested	NONE	NONE
Pointing RA	47.962279	47.97169450688283	Alternating exposures requested	N	N
Pointing Dec	74.418063	74.39077919683356	Primary exposure time	0.000000	3.2
Pointing Roll	244.676567	244.8761903082424			
SIM focus pos (mm)	-0.782348	-0.7809083437167272			
SIM defocus (mm)	0	0.001439871863259334			
SIM translation stage pos (mm)	-233.592463	-233.5874344608287			
SIM translation stage offset (mm)	0	-0.005018542100998502			
Observation start time	221258780.184000	221257488.977			
Observation start date	2005-01-04T20:45:16	2005-01-04T20:24:48			
Observation end time	221261780.184000	221262582.71473			
Observation end date	2005-01-04T21:35:16	2005-01-04T21:49:42			
Read mode	TIMED	TIMED			

## 2.3 Aspect





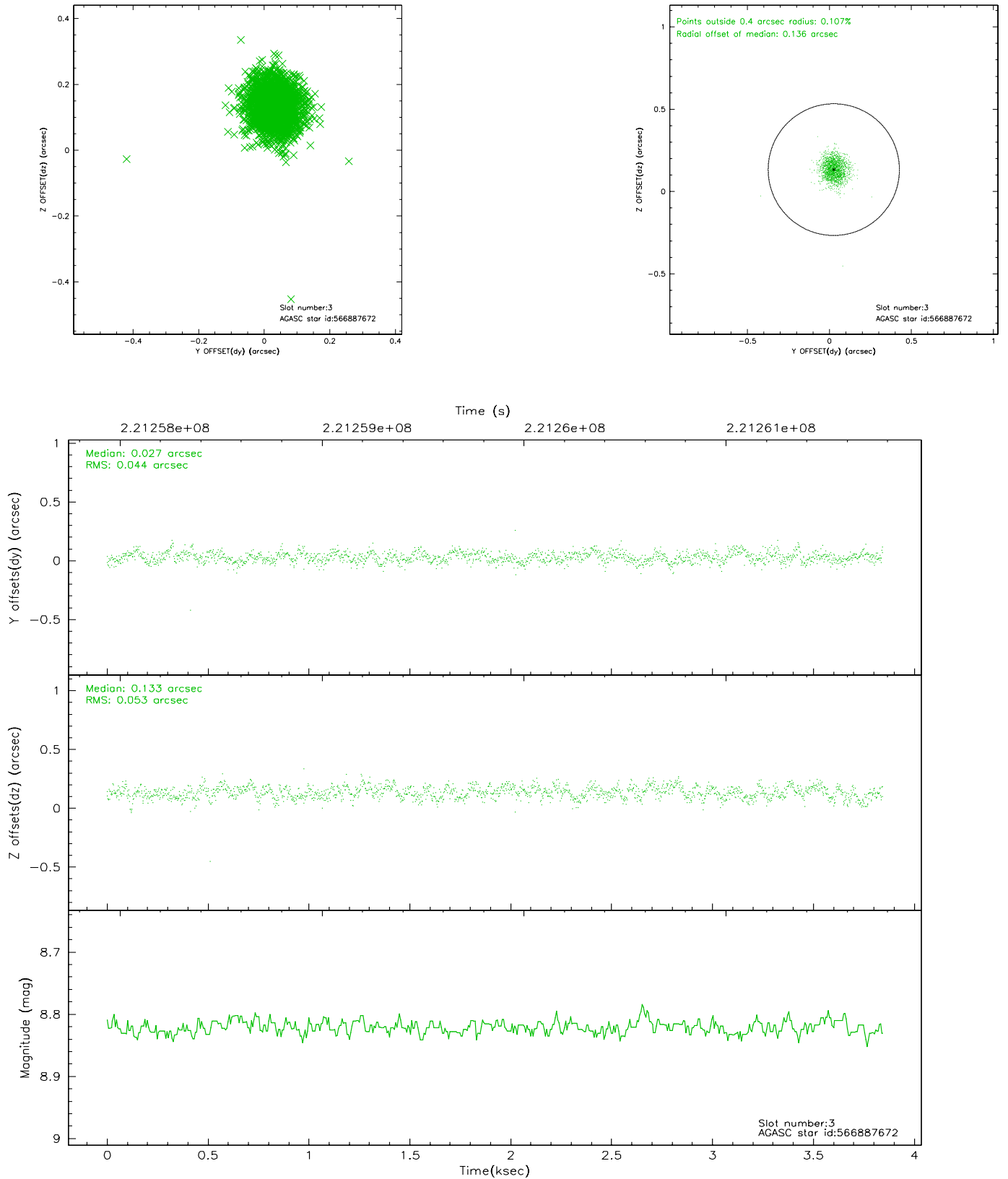
### Slot Statistics

slot	status	id	mag	n_pts	med_dy	med_dz	dr1	dr2	ra	dec	mean_y	mean_z
0	FID	ACIS-I-1	7.25	938	-0.018	0.052	0.006	0.011	0.000000	0.000000	932.80	-833.07
1	FID	ACIS-I-5	7.23	938	-0.127	0.017	0.006	0.009	0.000000	0.000000	-1814.51	1063.57
2	FID	ACIS-I-6	7.25	938	0.055	0.001	0.006	0.011	0.000000	0.000000	396.65	1709.91
3	GUIDE	566887672	8.82	1876	0.027	0.133	0.070	0.113	47.990307	74.600872	-605.94	-257.48
4	GUIDE	566893080	7.97	1876	0.027	-0.002	0.070	0.114	46.345816	73.945134	2207.62	-735.86
5	GUIDE	568598336	8.05	1876	0.080	-0.102	0.056	0.091	48.171071	74.197028	632.93	524.77
6	GUIDE	568599608	8.31	1874	-0.064	0.062	0.062	0.098	49.059683	74.037754	764.42	1563.50
7	GUIDE	568603728	7.44	1875	-0.070	-0.097	0.053	0.089	48.364597	74.296345	227.90	541.80

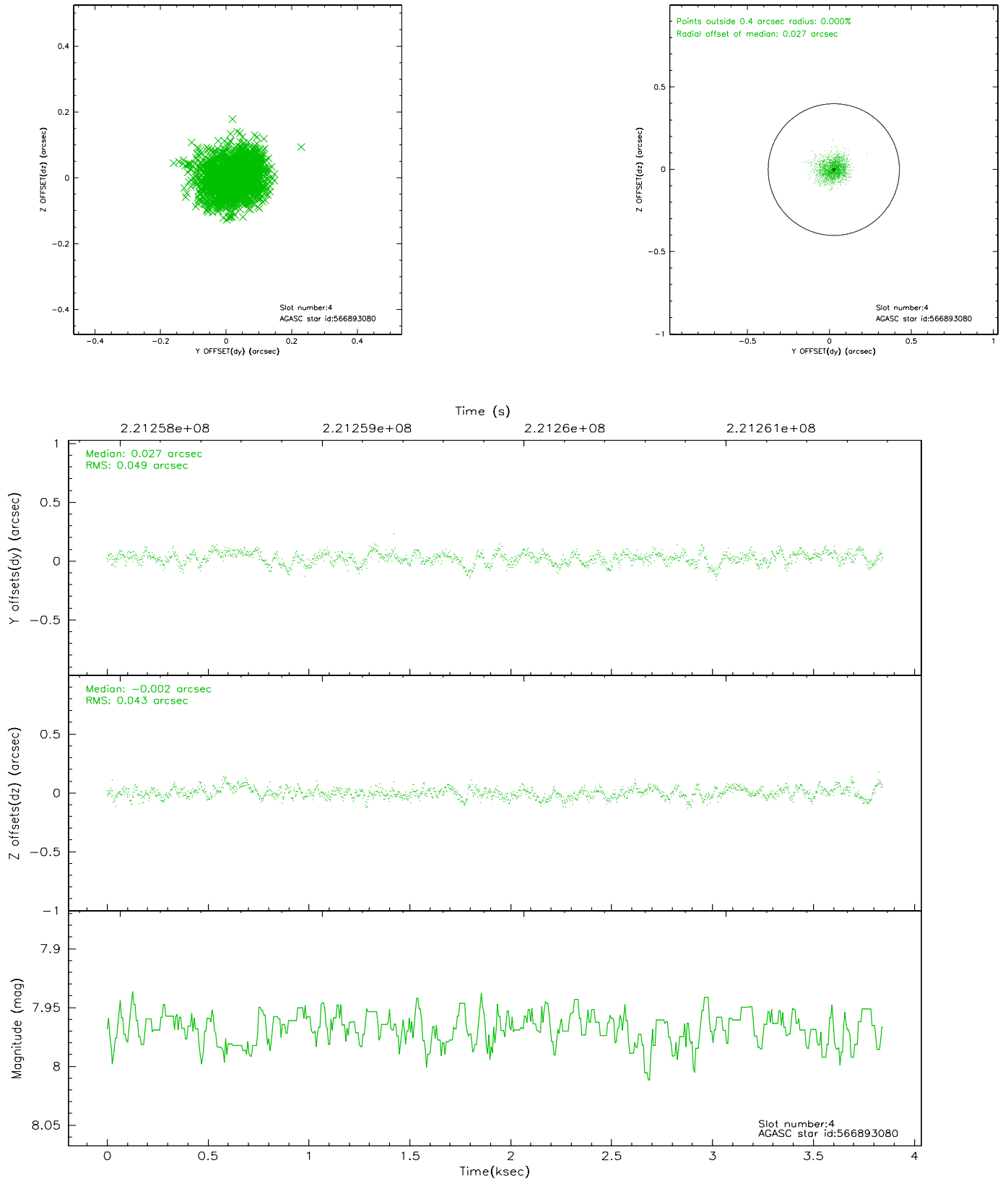


## 2.4 Star Slots

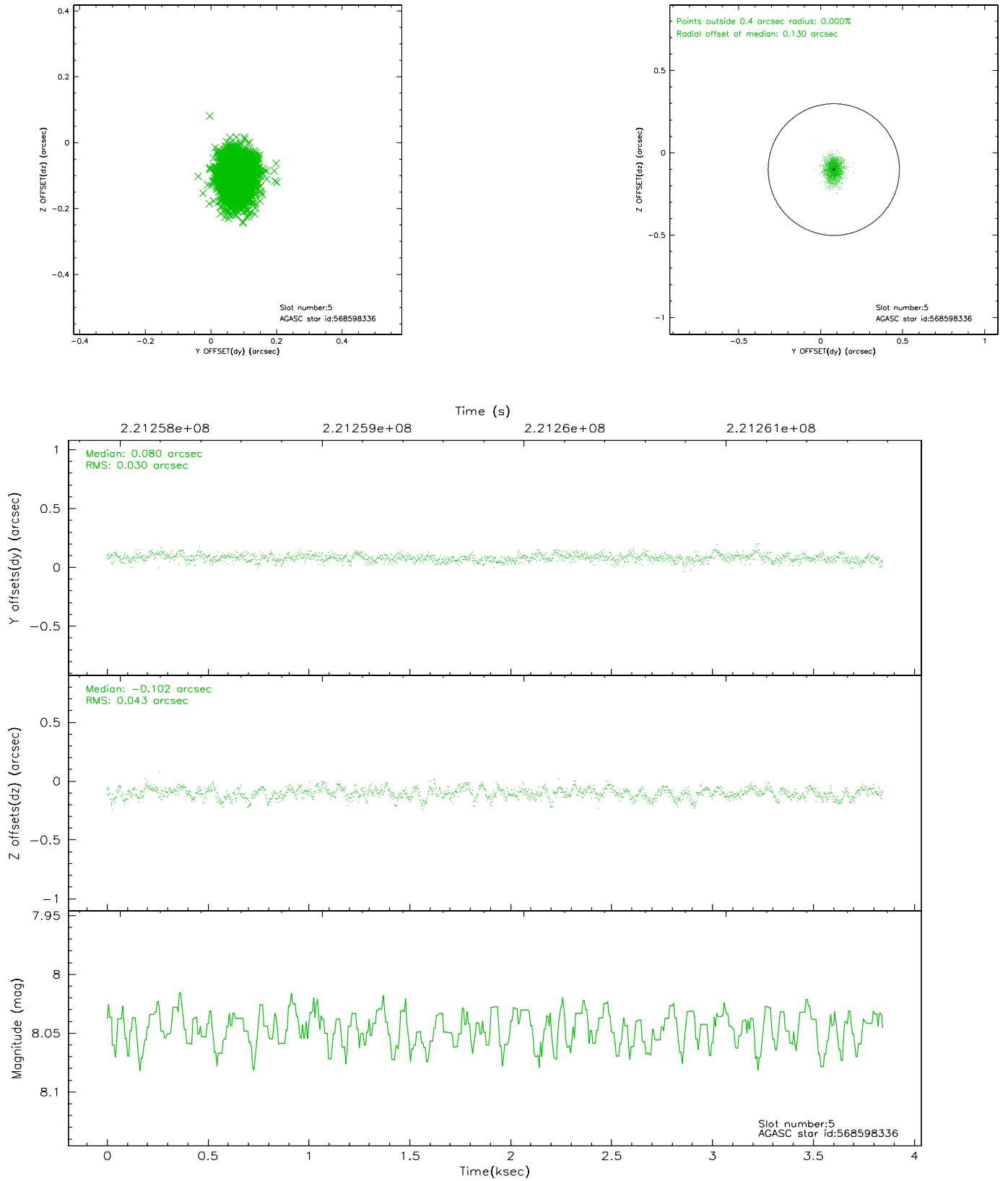
### 2.4.1 Slot 3



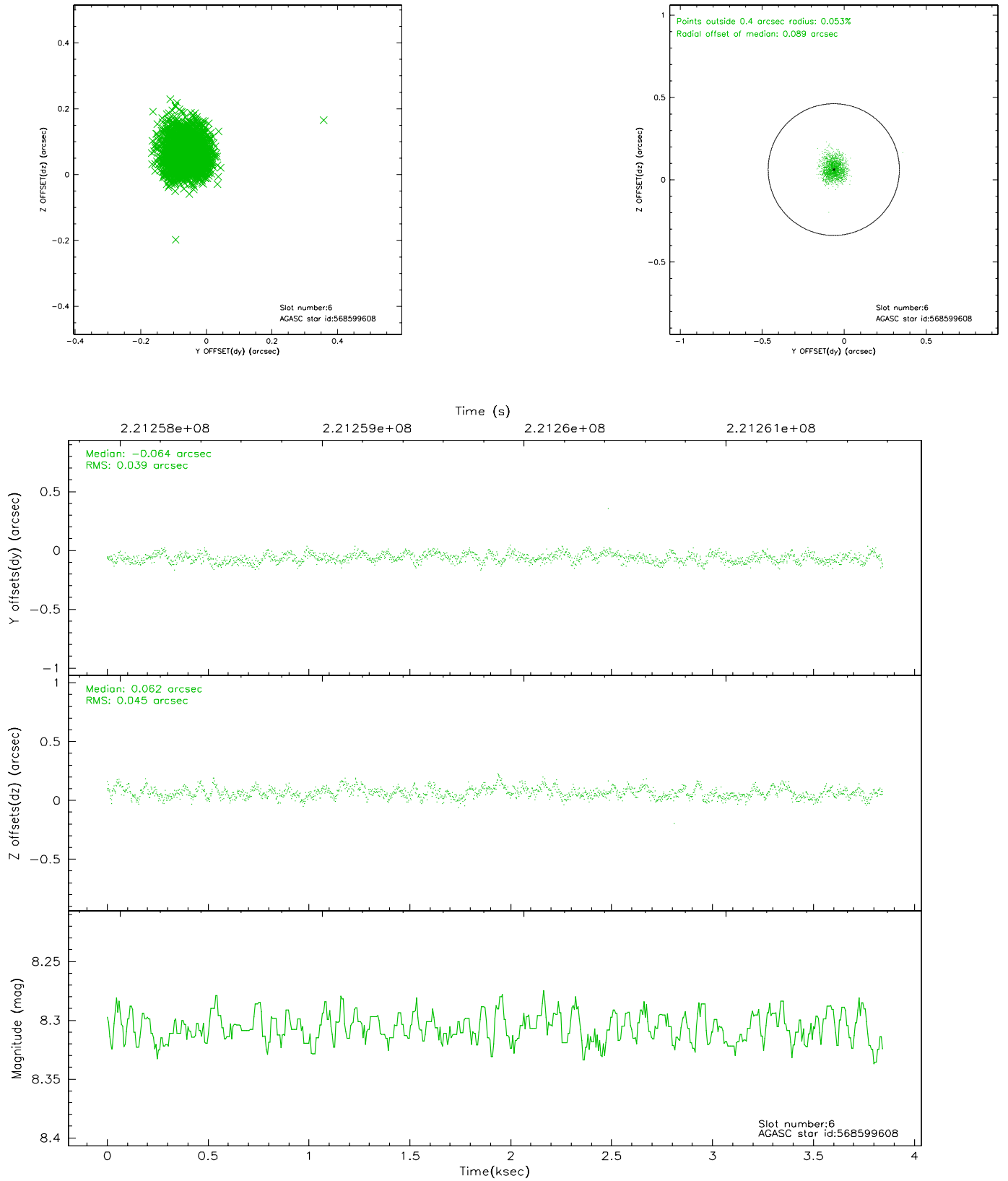
## 2.4.2 Slot 4



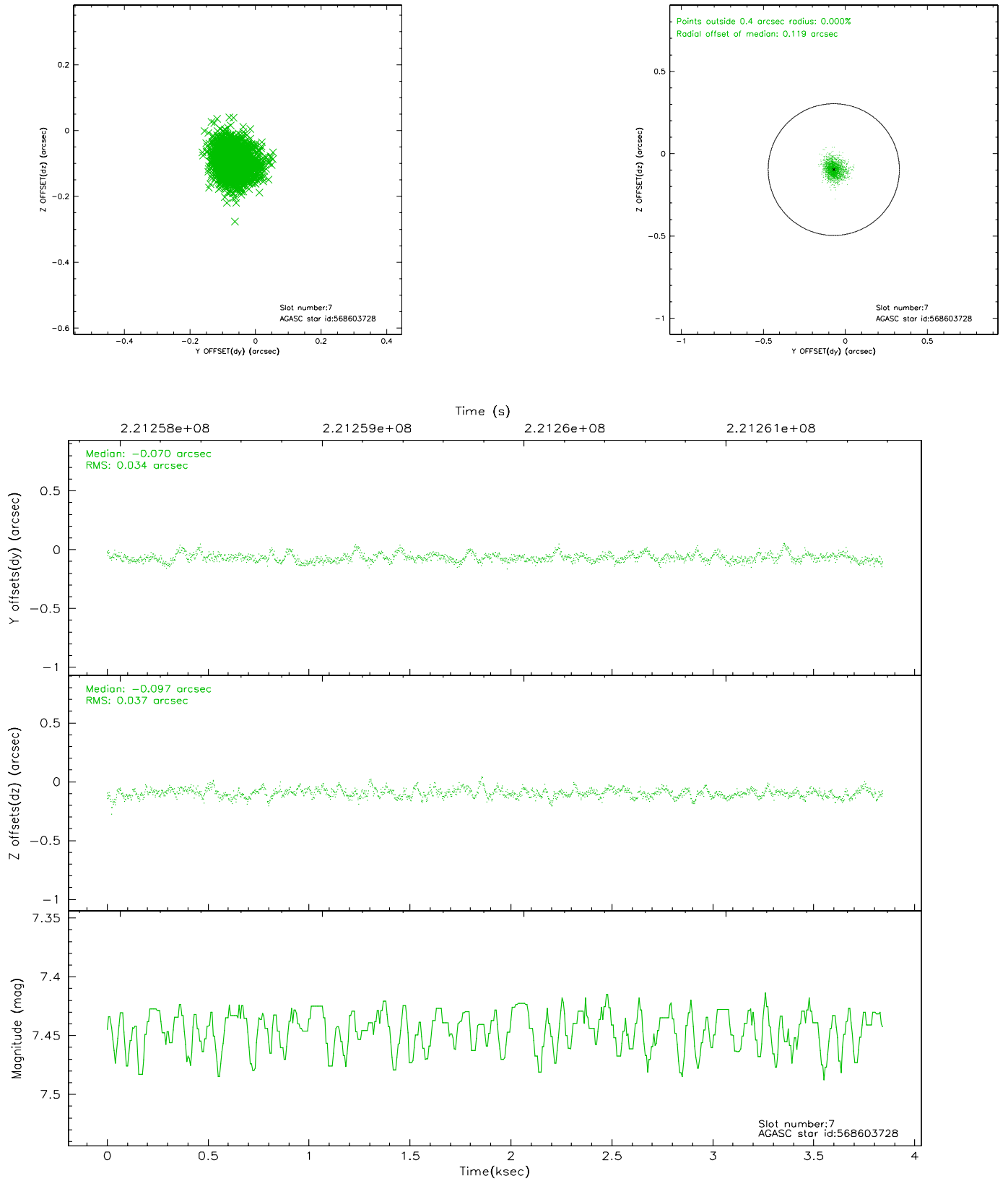
### 2.4.3 Slot 5



## 2.4.4 Slot 6

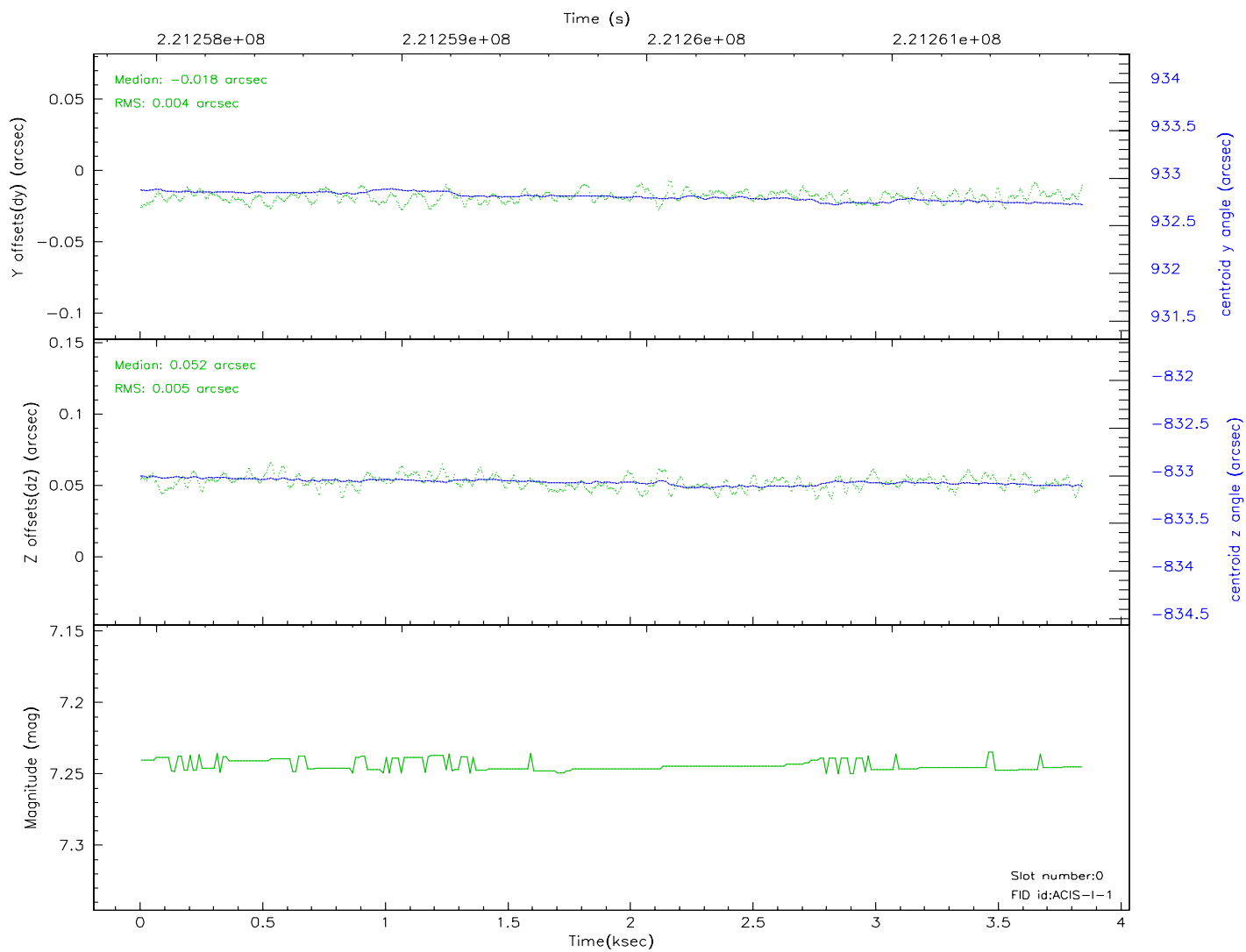
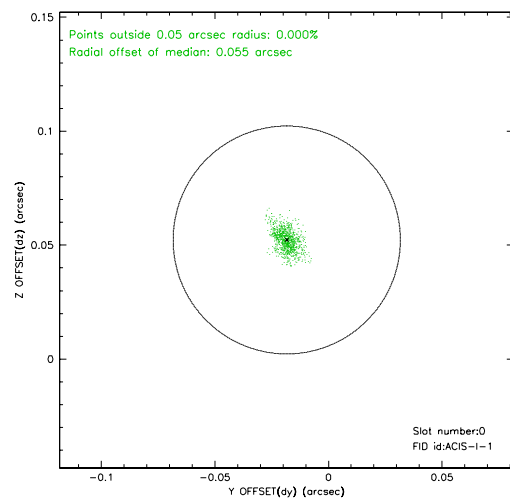
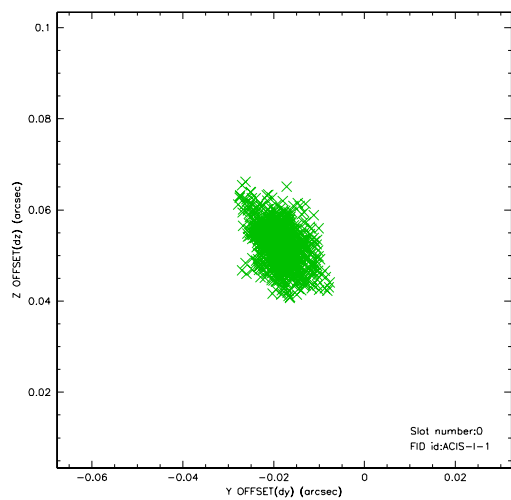


## 2.4.5 Slot 7

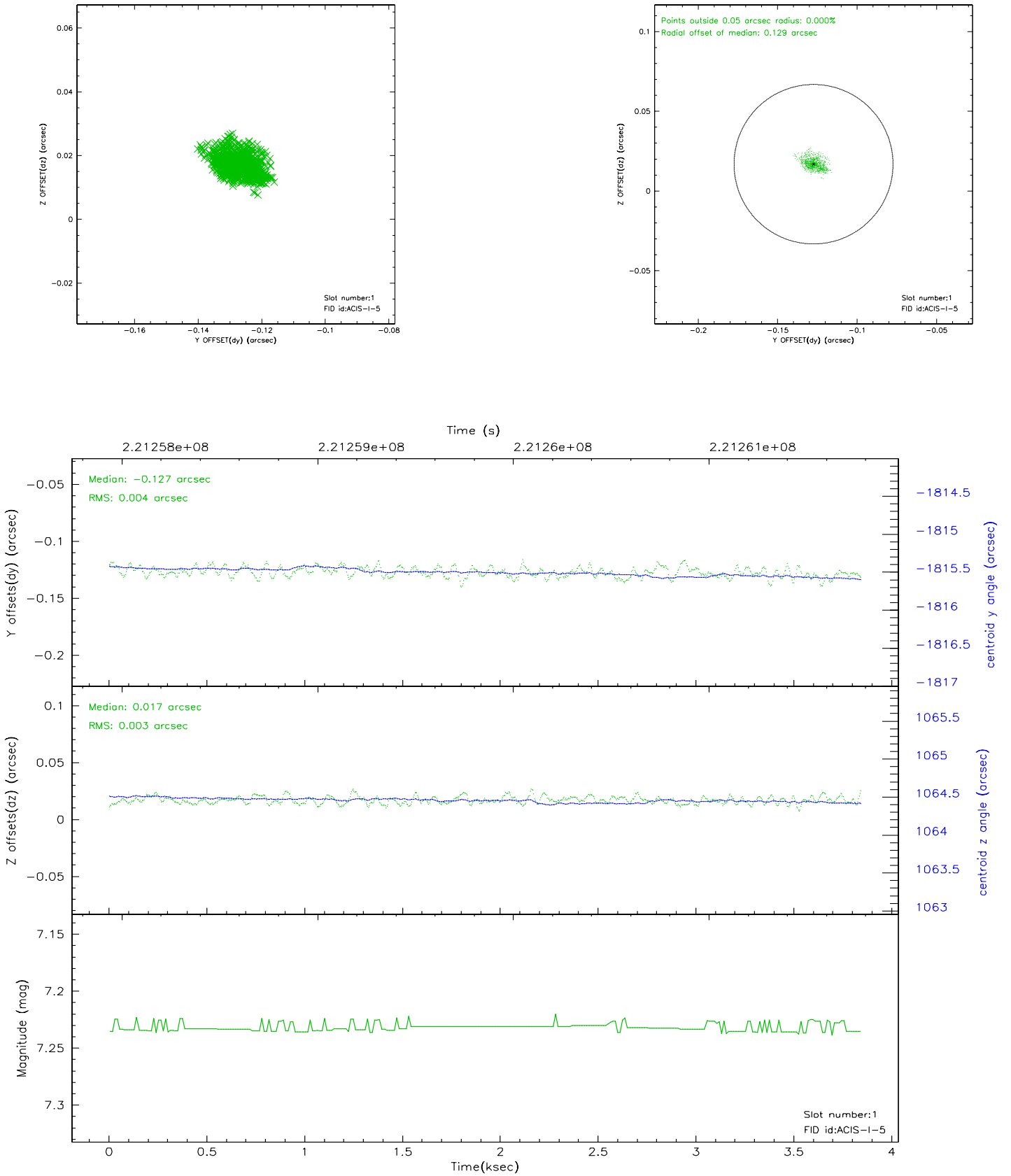


## 2.5 FID Slots

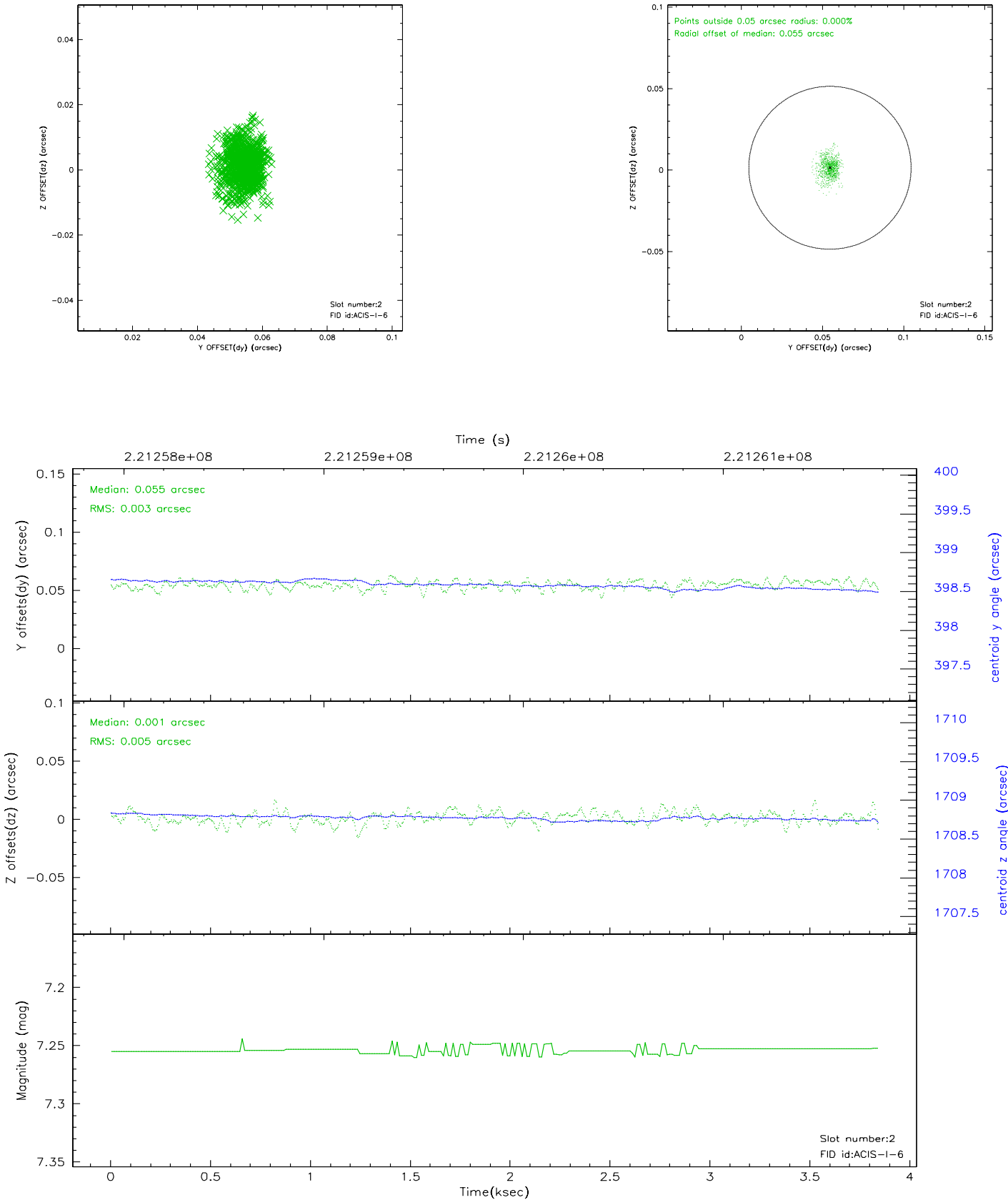
### 2.5.1 Slot 0



## 2.5.2 Slot 1

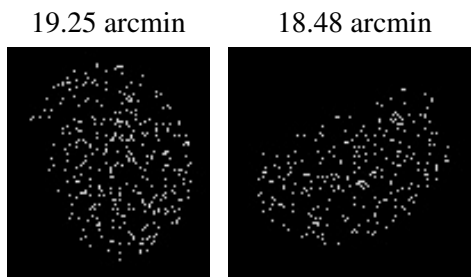


2.5.3 Slot 2





### 3 Point Sources



## A Summary

### A.1 Status

V&V Scientist	Jen Lauer
V&V Date (YYYY-MM-DD)	2006.03.16
V&V Edition	1
V&V Disposition and Status	OK
V&V Charge Time	2.963199

### A.2 Comments