

V&V Reference Report

L2 ASCDS Version : 7.6.7.1

Observation 6351 - L2 Version 002
Chandra X-Ray Center

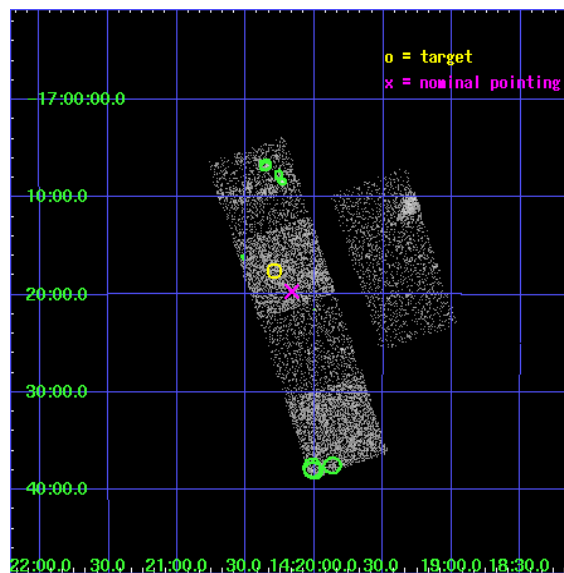
L2 Processing Date : Mar 15 2006

Contents

1	Front	2
2	OBI	3
2.1	OBI	3
2.1.1	Images	3
2.1.2	Bias	3
2.1.3	Parameters	4
2.1.4	Events	4
2.2	Compared Parameters	5
2.3	Aspect	6
2.4	Star Slots	9
2.4.1	Slot 3	9
2.4.2	Slot 4	10
2.4.3	Slot 5	11
2.4.4	Slot 6	12
2.4.5	Slot 7	13
2.5	FID Slots	14
2.5.1	Slot 0	14
2.5.2	Slot 1	15
2.5.3	Slot 2	16
3	Point Sources	17
A	Summary	18
A.1	Status	18
A.2	Comments	18

1 Front

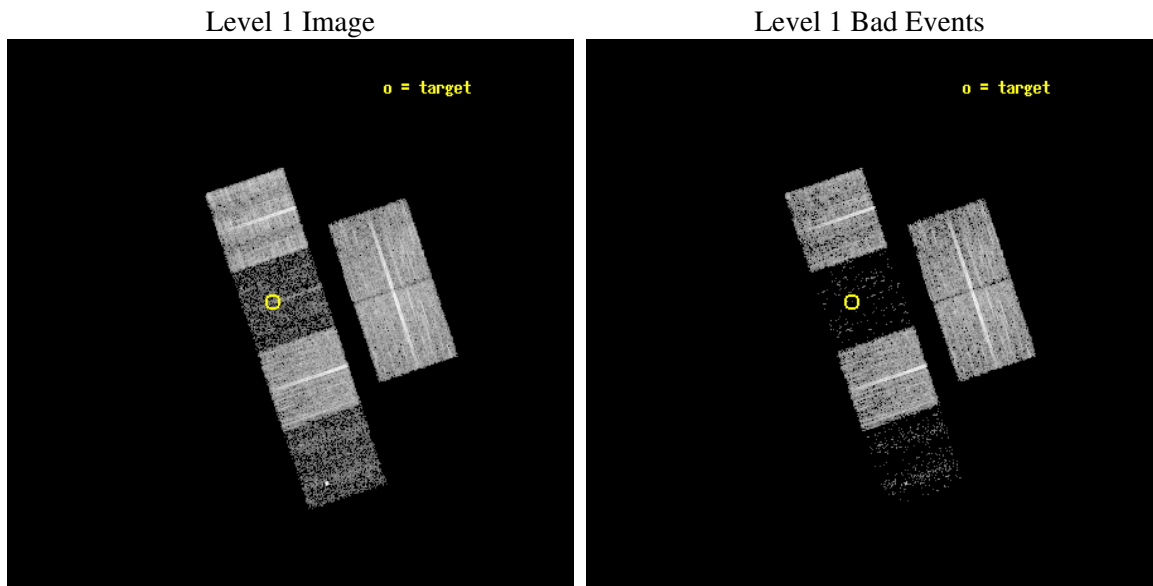
seq_num	100058
obs_id	6351
title	Comet 9P/Tempel 1 During the Deep Impact Encounter
observer	Dr. Carey Lisse
object	9P/Tempel 1
dtcycle	0
cycle	P
ra_targ	215.073752
dec_targ	-17.293482
ra_nom	215.04121411795
dec_nom	-17.328217759476
roll_nom	251.52783241237
revision	2
ontime	8188.7999694943
livetime	8085.1084535772
ontime2	8185.5589992106
ontime3	8188.7999694943
ontime5	8188.7999694943
ontime6	8188.7999694943
ontime7	8188.7999694943
ontime8	8185.5589992106
l2events	12984



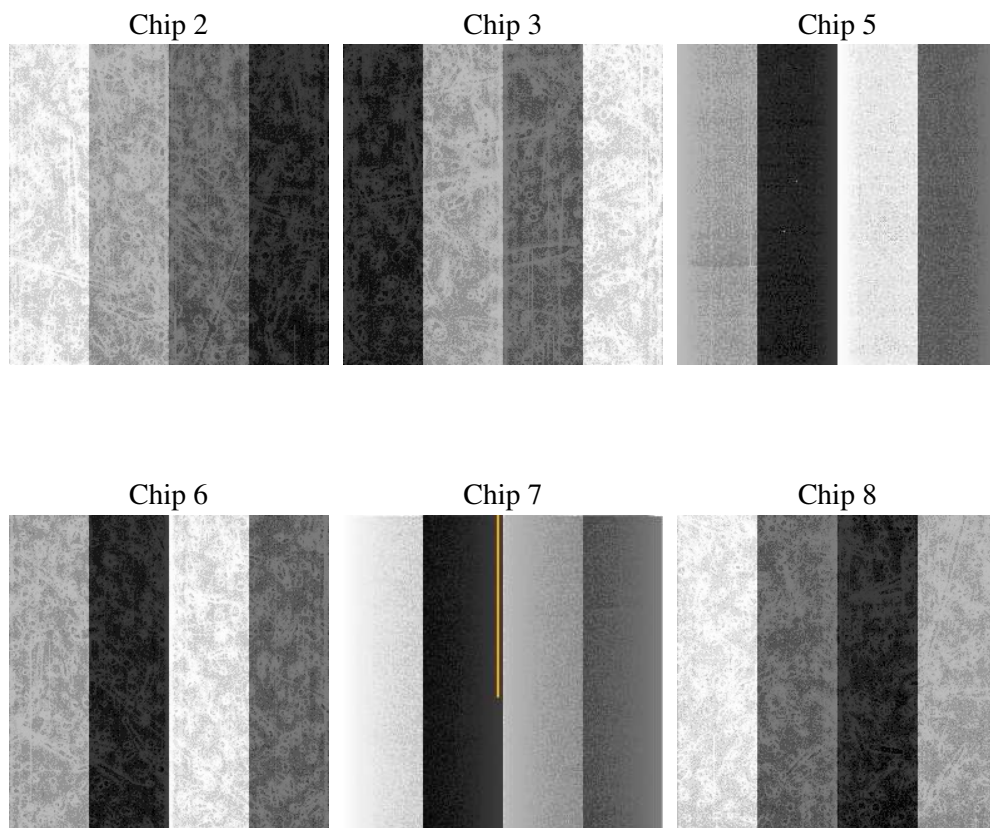
2 OBI

2.1 OBI

2.1.1 Images



2.1.2 Bias



2.1.3 Parameters

obi_num	0
ascdsver	7.6.7.1
caldsver	3.2.1
date	2006-03-15T17:18:46
revision	2

sched_exp_time	8000.000000
ontime	8510.8730493784
ontime2	8507.6320592165
ontime3	8507.6320392787
ontime5	8510.8730095625
ontime6	8510.8730095625
ontime7	8510.8730493784
ontime8	8504.391068995
l1events	168621

2.1.4 Events

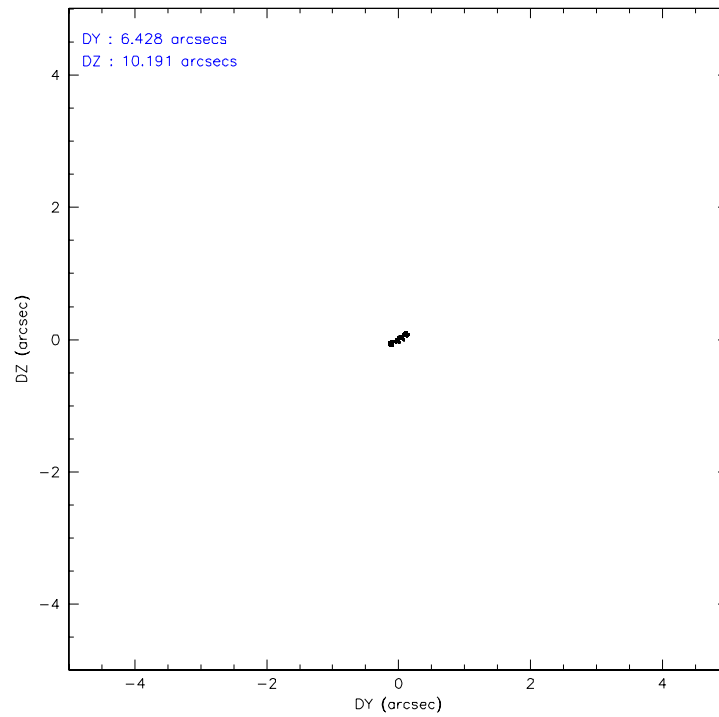
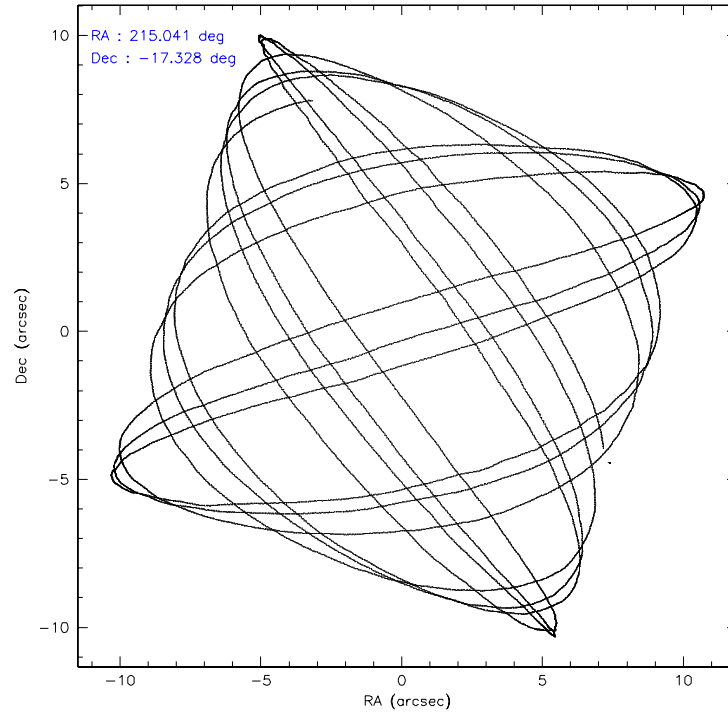
	ccd 2	ccd 3	ccd 5	ccd 6	ccd 7	ccd 8
level 1 events	41833	35848	6697	36730	5467	42046
rejected events	40162	33975	2233	35030	1281	31345
rejected %	96%	94%	33%	95%	23%	74%

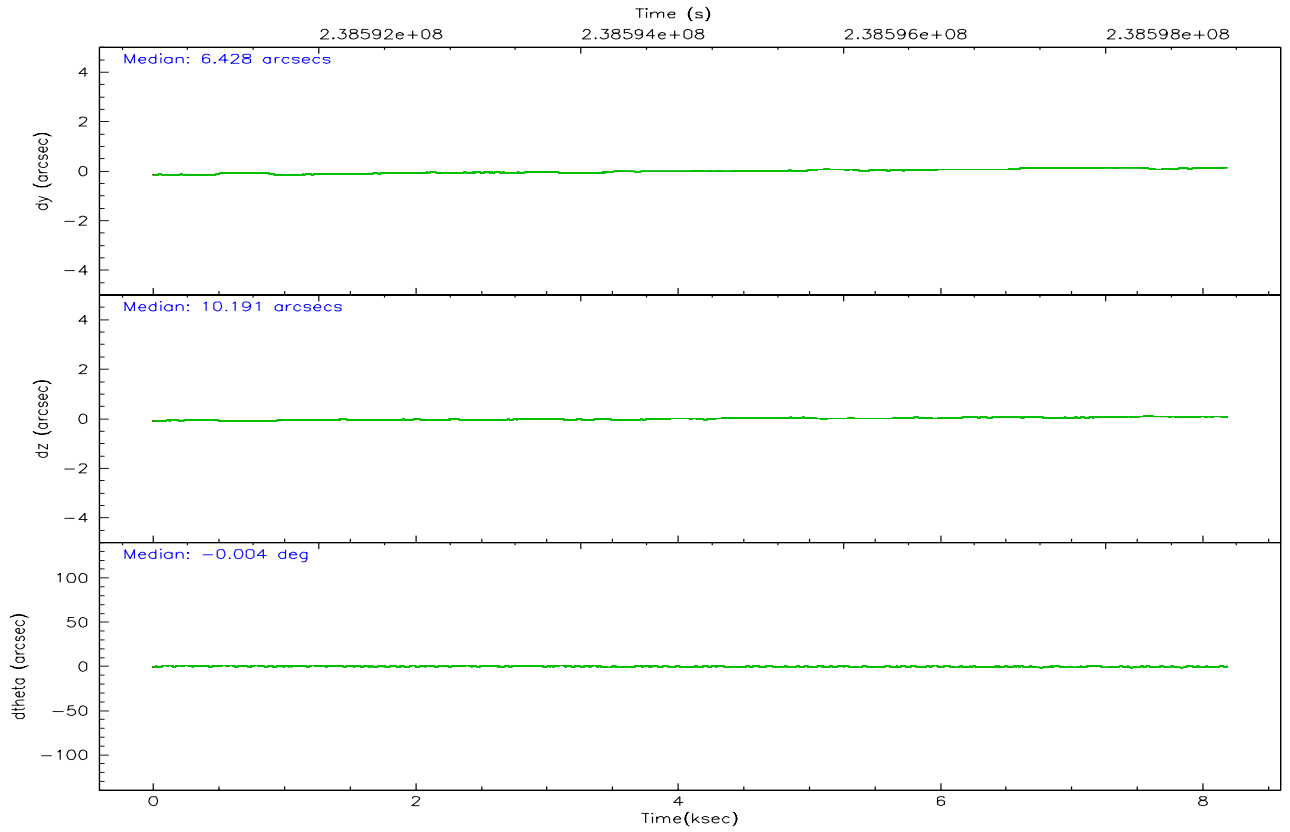
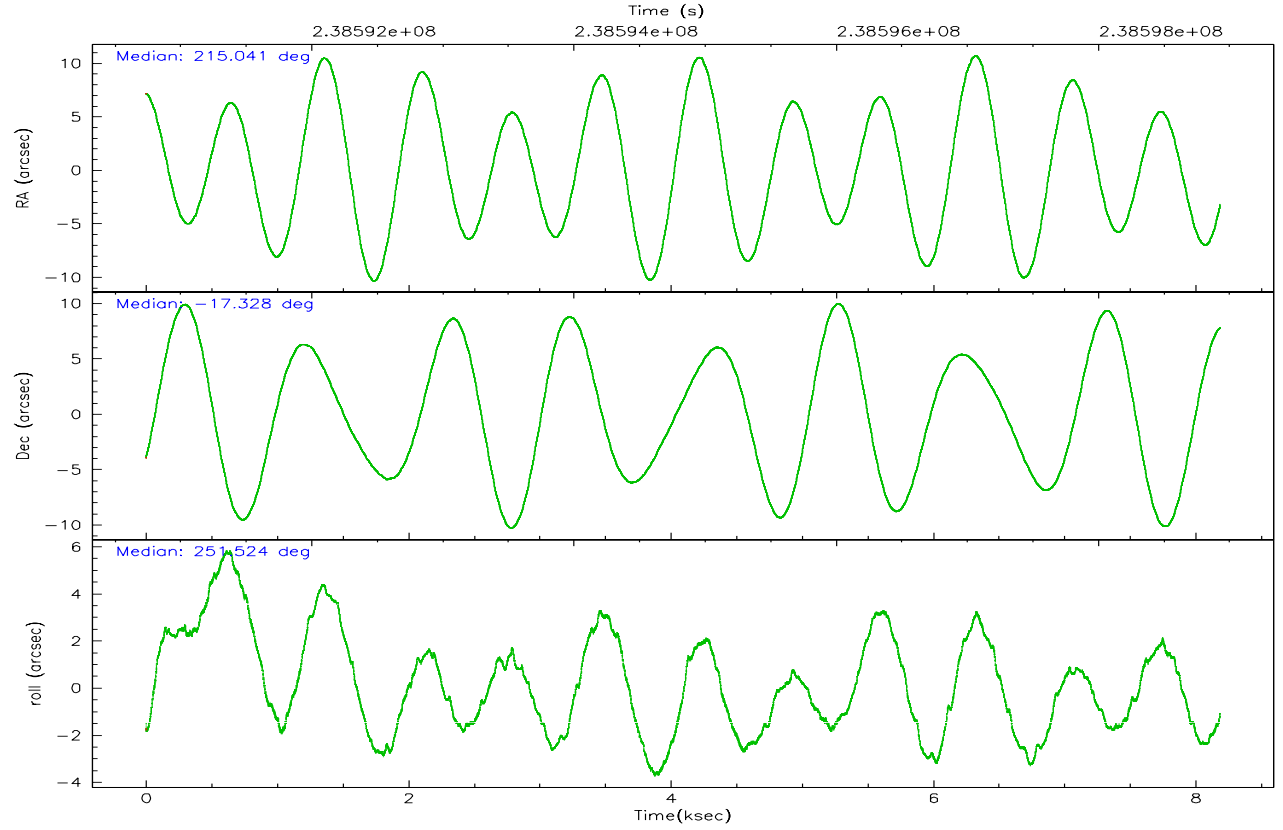
	ccd 2	ccd 3	ccd 5	ccd 6	ccd 7	ccd 8
grade 0 events	765	1198	1303	885	1128	3179
	1%	3%	19%	2%	20%	7%
grade 1 events	18	13	79	12	22	21
	0%	0%	1%	0%	0%	0%
grade 2 events	369	221	1671	323	1419	2550
	0%	0%	24%	0%	25%	6%
grade 3 events	193	229	568	226	642	1177
	0%	0%	8%	0%	11%	2%
grade 4 events	273	179	554	242	599	1112
	0%	0%	8%	0%	10%	2%
grade 5 events	39	33	305	27	110	229
	0%	0%	4%	0%	2%	0%
grade 6 events	129	103	545	105	566	2988
	0%	0%	8%	0%	10%	7%
grade 7 events	40047	33872	1672	34910	981	30790
	95%	94%	24%	95%	17%	73%

2.2 Compared Parameters

Parameter	Planned	Actual	Parameter	Planned	Actual
Instrument	ACIS	ACIS	Obspar format version number	6	6
Detector	ACIS-235678	ACIS-235678	Obspar file type	PREDICTED	ACTUAL
Grating	NONE	NONE	Obspar update status	NONE	UPDATED
Data mode	VFAINT	VFAINT	On-chip summing requested	N	N
Observation mode	POINTING	POINTING	Subarray requested	NONE	NONE
Pointing RA	215.035149	215.0412141179515	Alternating exposures requested	N	N
Pointing Dec	-17.301655	-17.32821775947572	Primary exposure time	0.000000	3.2
Pointing Roll	251.369396	251.5278324123737			
Window start time	238572064.184000	238572064.184000			
Window stop time	238615264.184000	238615264.184000			
SIM focus pos (mm)	-0.684267	-0.6828225247311905			
SIM defocus (mm)	0	0.001444936568705701			
SIM translation stage pos (mm)	-190.132523	-190.1400660498719			
SIM translation stage offset (mm)	0	0.00754346686406393			
Observation start time	238590922.184000	238590545.72723			
Observation start date	2005-07-24T11:14:18	2005-07-24T11:09:05			
Observation end time	238598922.184000	238599055.79012			
Observation end date	2005-07-24T13:27:38	2005-07-24T13:30:55			
Read mode	TIMED	TIMED			

2.3 Aspect



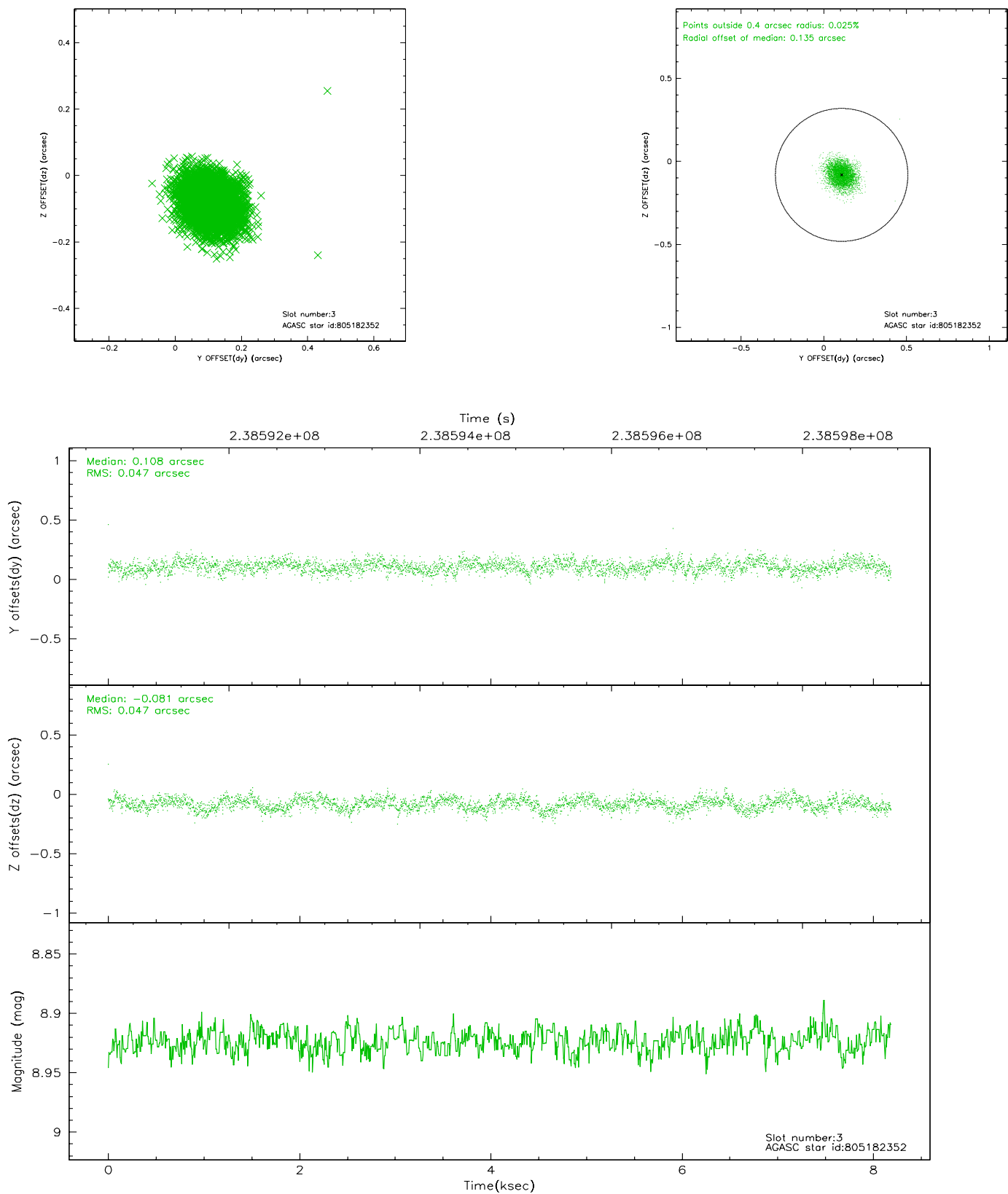


Slot Statistics

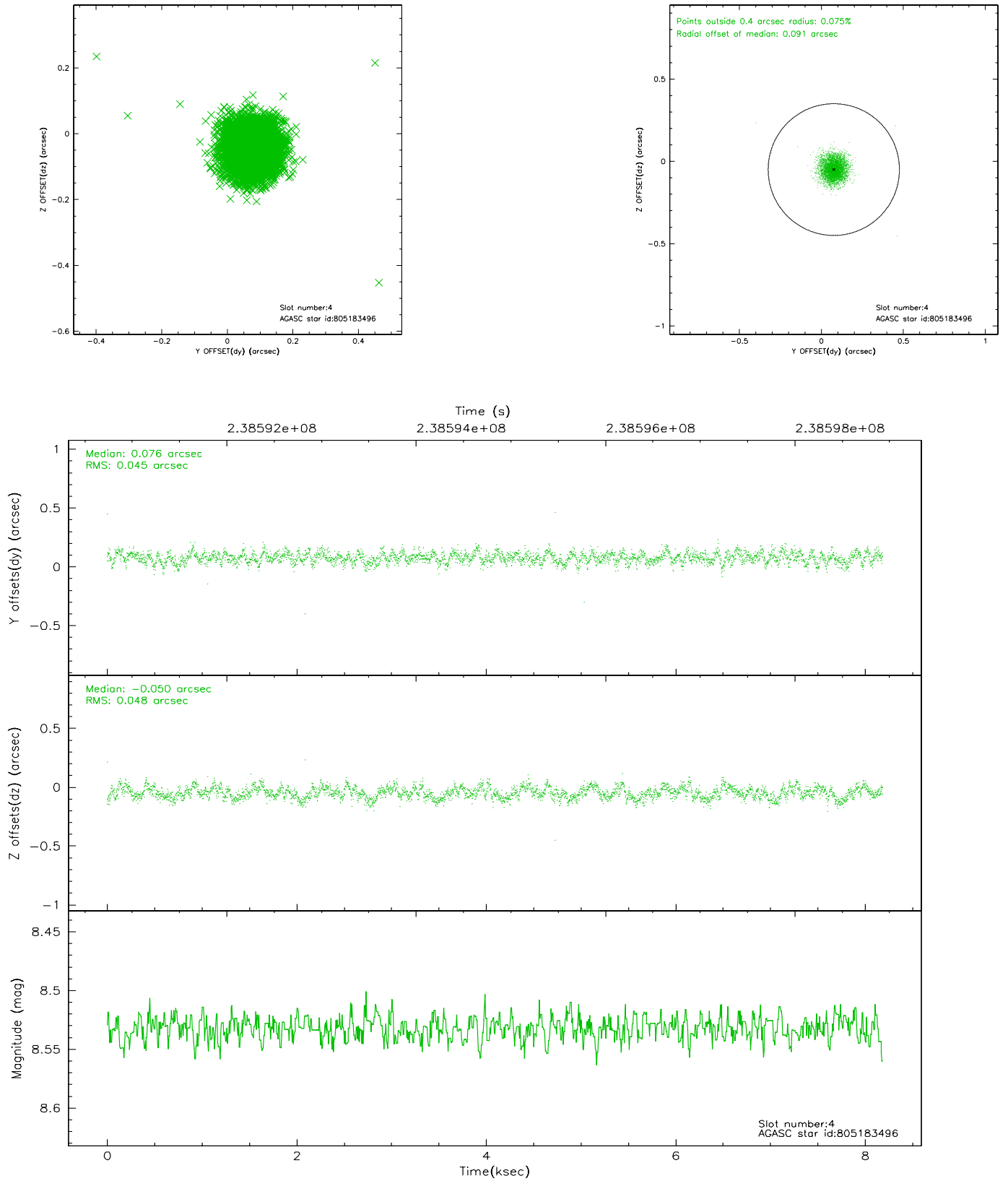
slot	status	id	mag	n_pts	med_dy	med_dz	dr1	dr2	ra	dec	mean_y	mean_z
0	FID	ACIS-S-1	7.18	1998	0.004	-0.020	0.007	0.012	0.000000	0.000000	936.84	-1727.11
1	FID	ACIS-S-2	7.10	1998	-0.063	-0.022	0.006	0.009	0.000000	0.000000	-758.74	-1732.34
2	FID	ACIS-S-4	7.20	1998	0.033	0.047	0.005	0.009	0.000000	0.000000	2153.84	176.39
3	GUIDE	805182352	8.92	3993	0.108	-0.081	0.070	0.114	214.624580	-17.686015	1763.00	-891.67
4	GUIDE	805183496	8.53	3995	0.076	-0.050	0.070	0.110	214.568748	-17.733891	1988.34	-1018.01
5	GUIDE	805185120	8.61	3995	-0.002	0.006	0.060	0.095	215.253528	-17.793163	1438.85	1274.78
6	GUIDE	805187072	8.72	3993	-0.104	0.109	0.056	0.092	215.513645	-17.149952	-1040.93	1386.49
7	GUIDE	805188160	8.98	3994	-0.079	0.018	0.064	0.104	215.356854	-16.987214	-1425.69	688.72

2.4 Star Slots

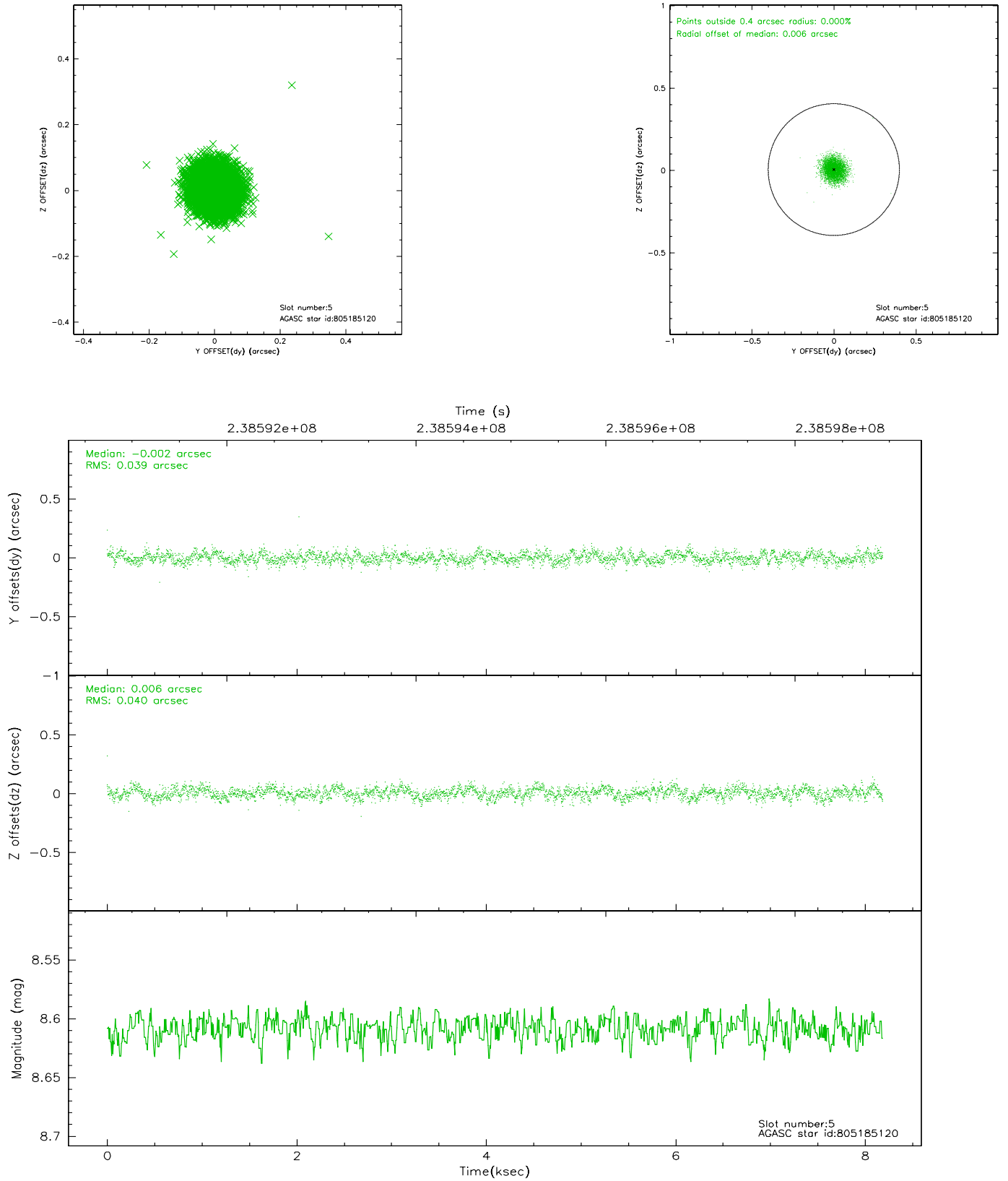
2.4.1 Slot 3



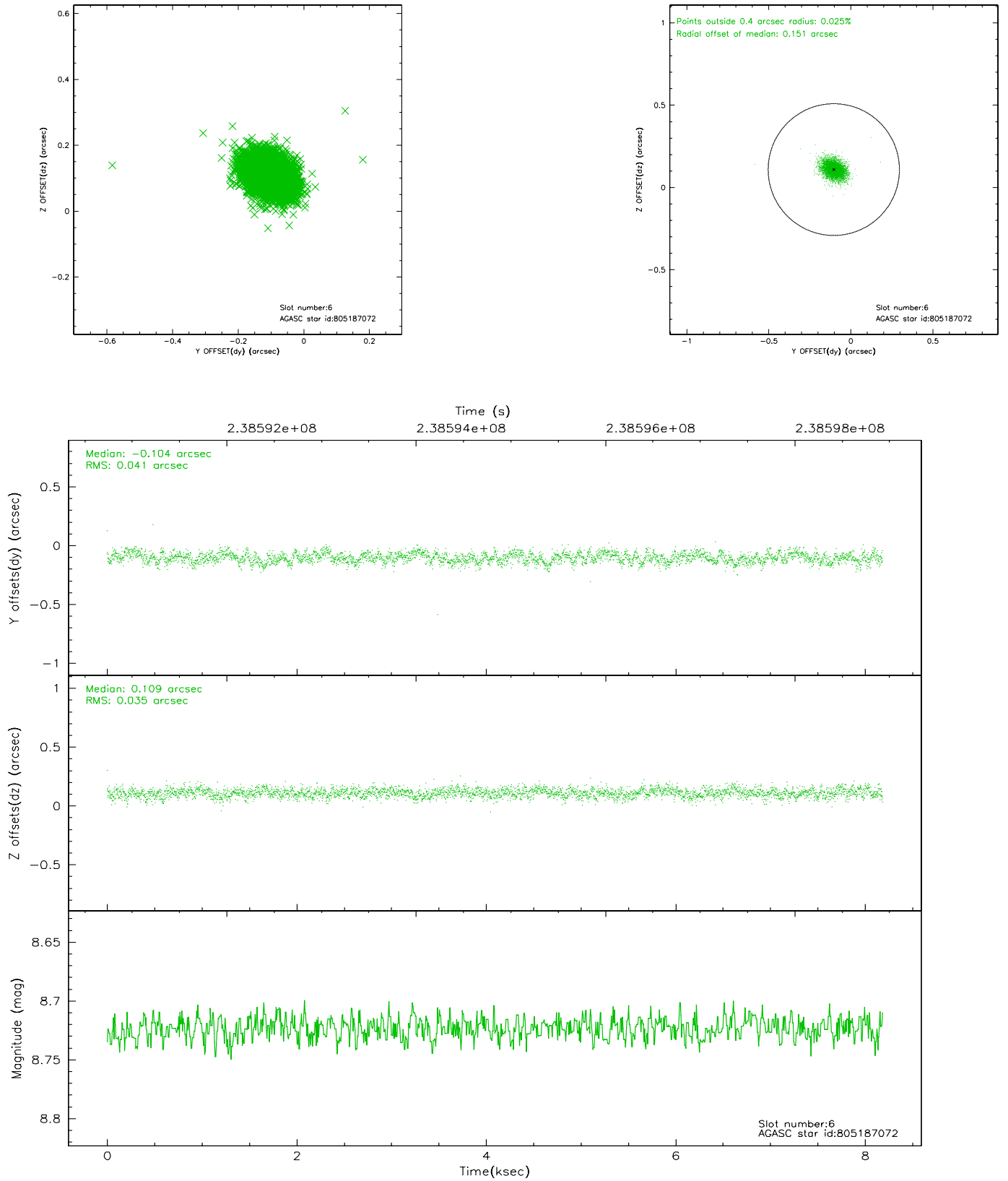
2.4.2 Slot 4



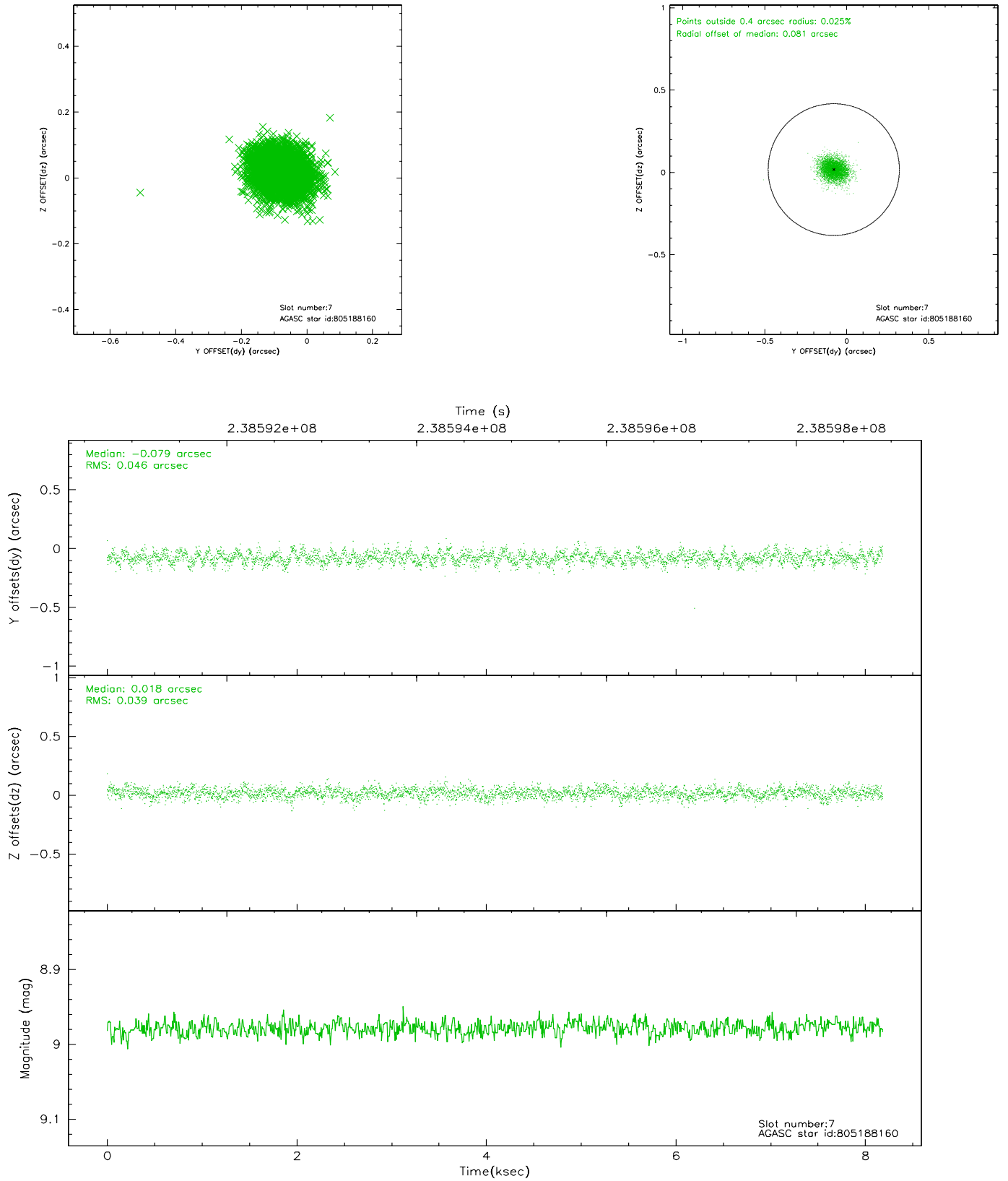
2.4.3 Slot 5



2.4.4 Slot 6

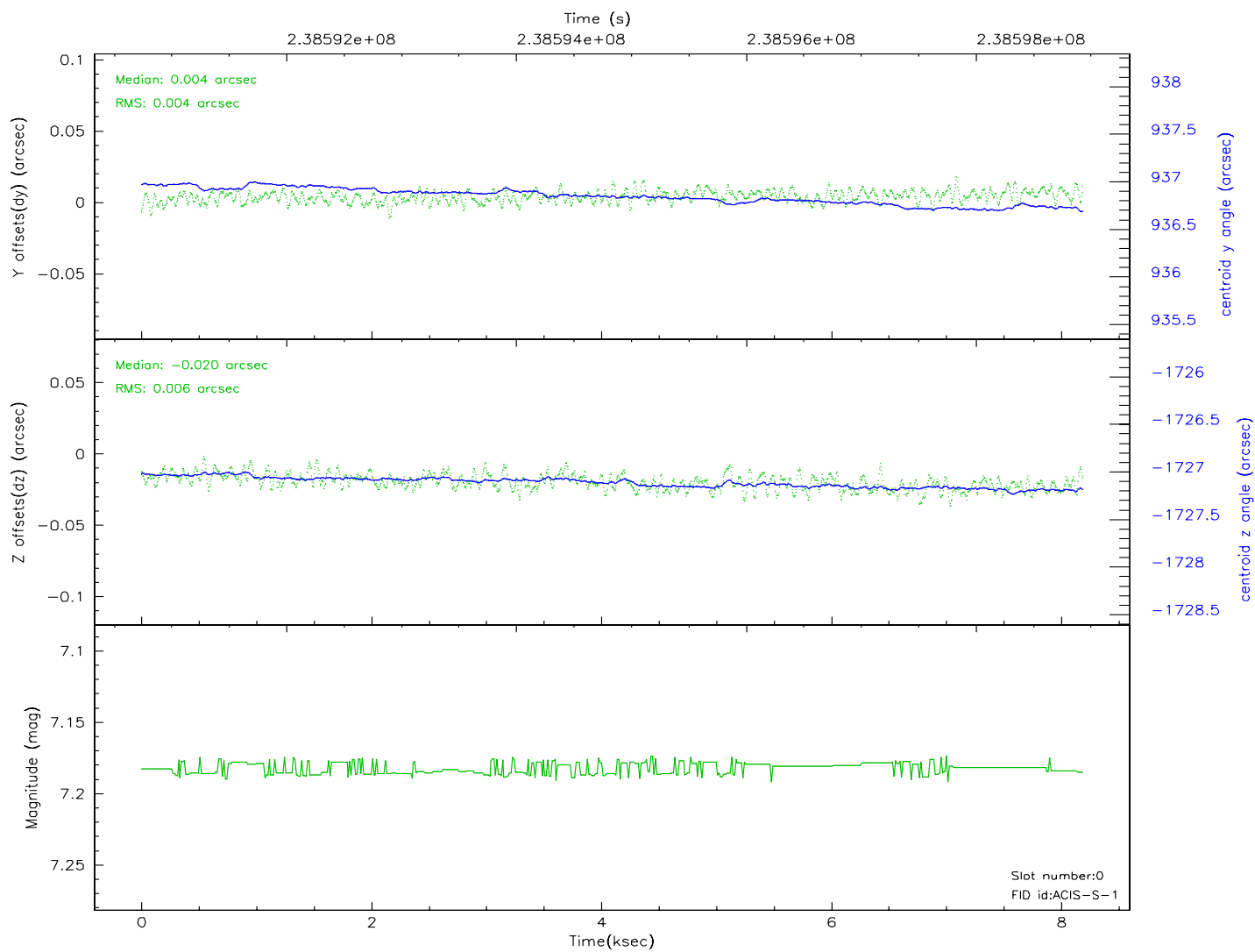
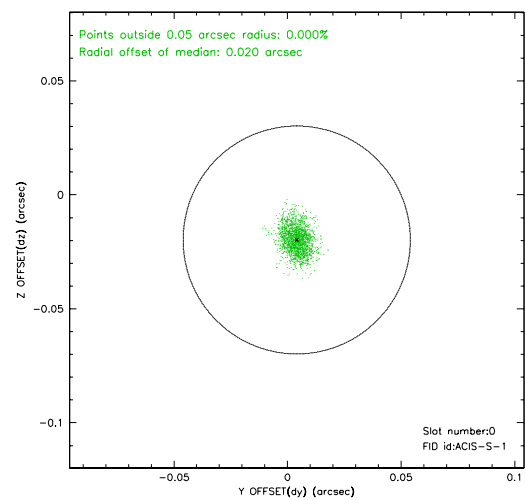
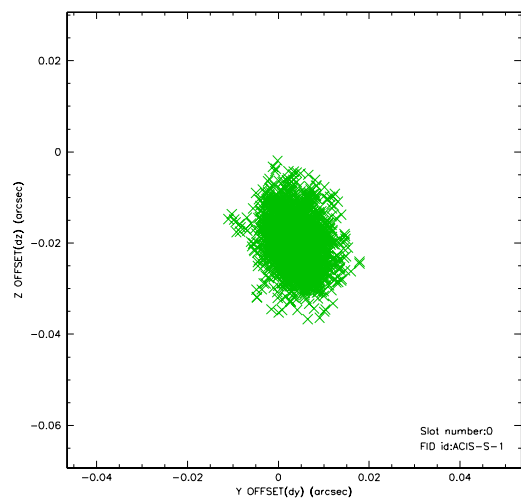


2.4.5 Slot 7

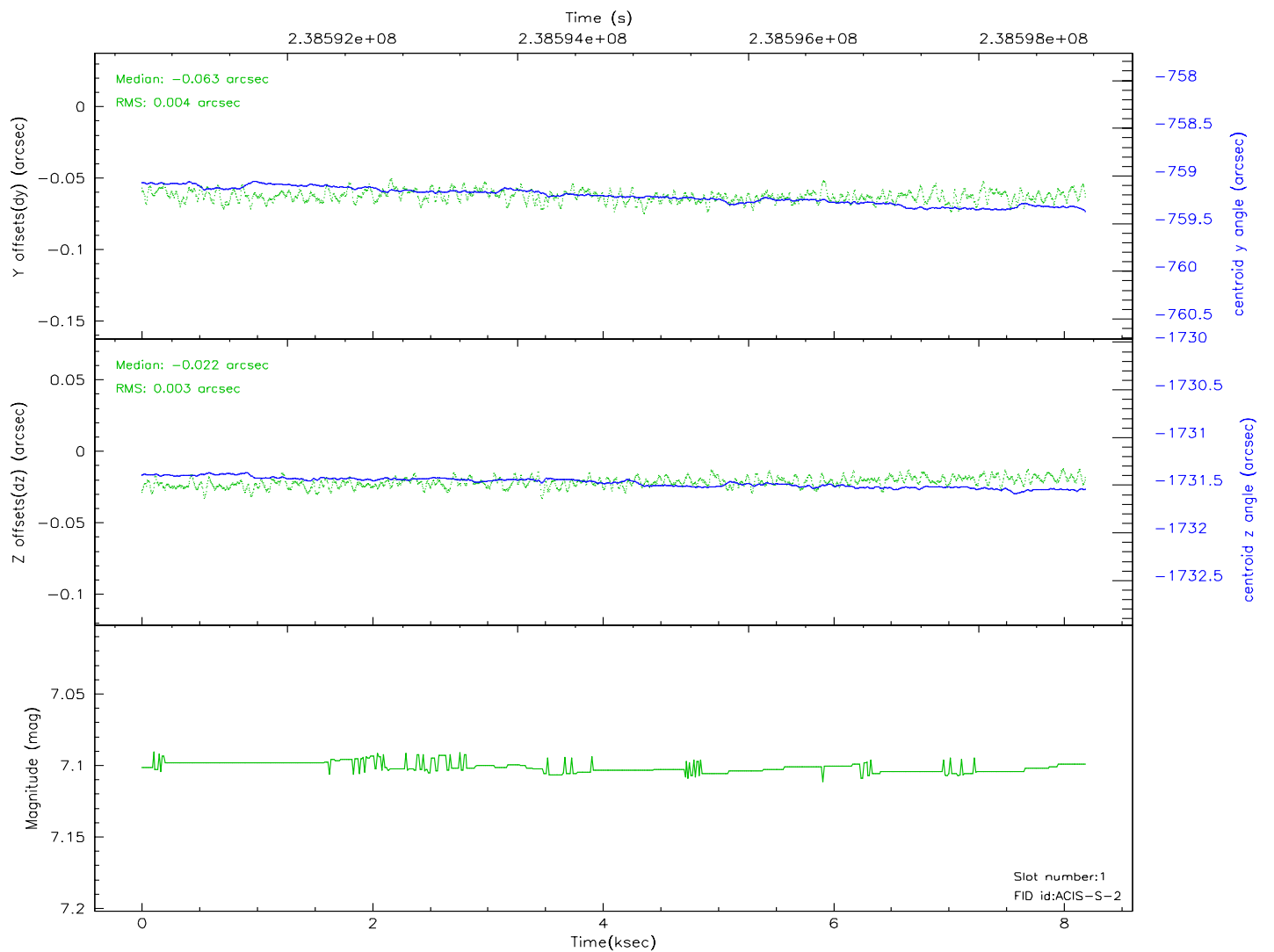
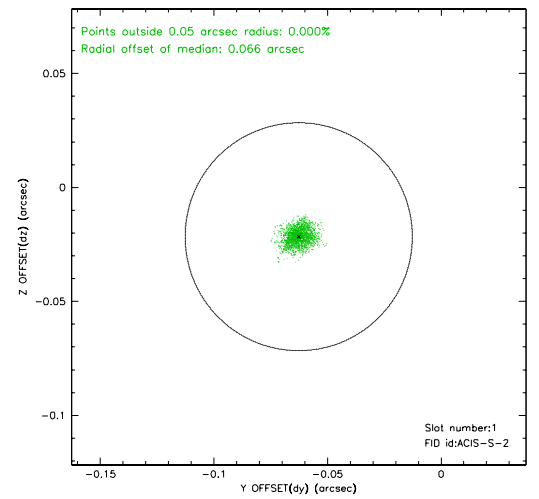
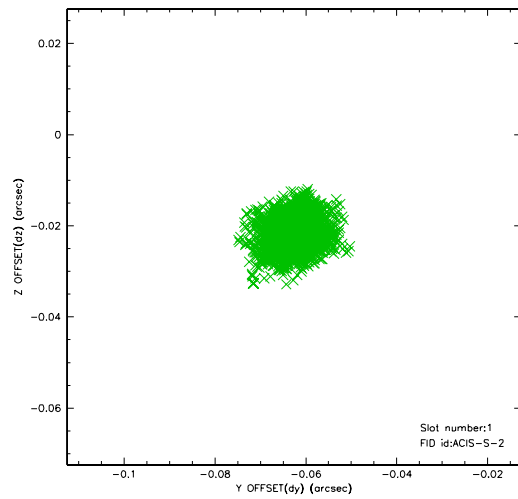


2.5 FID Slots

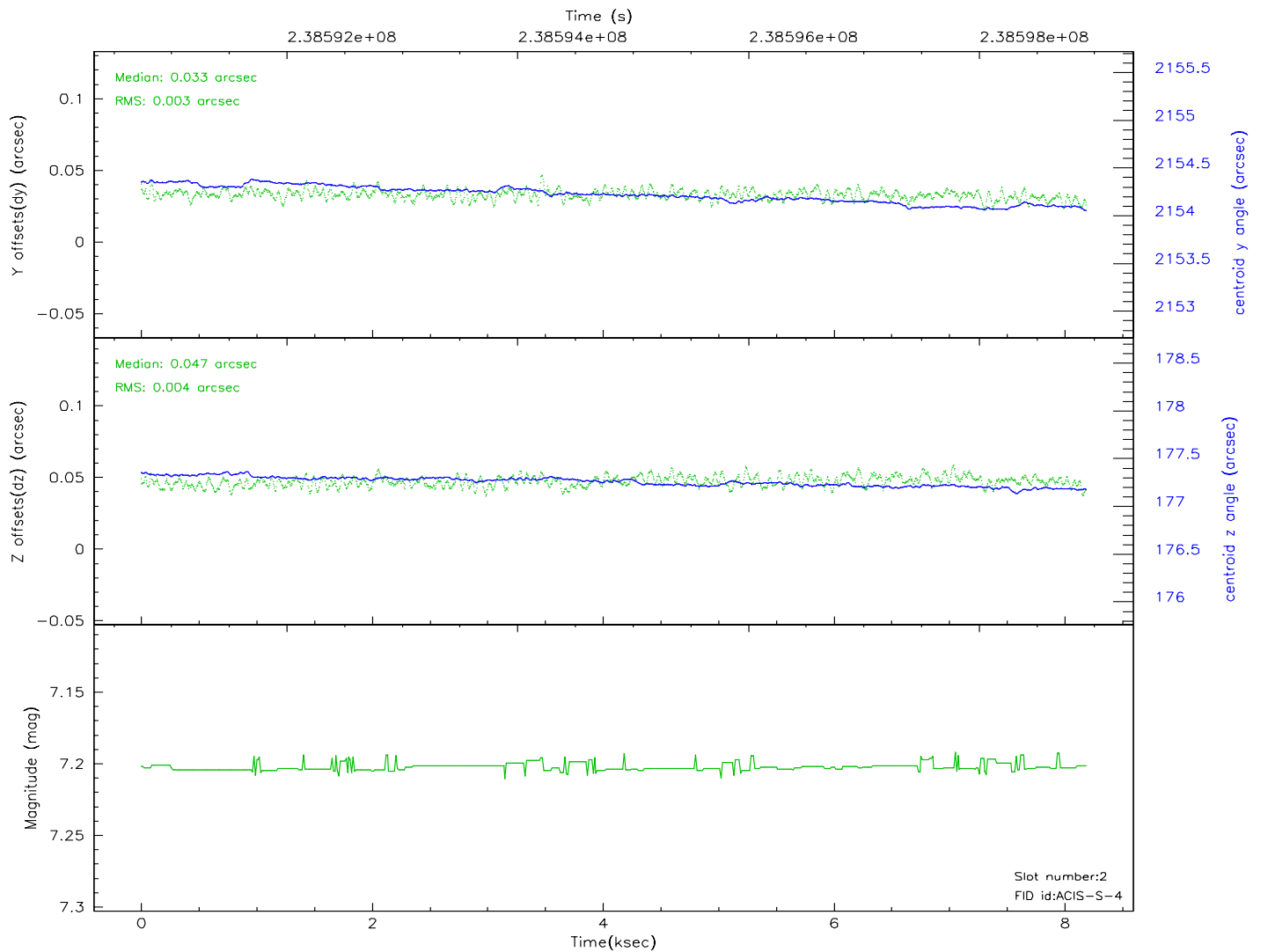
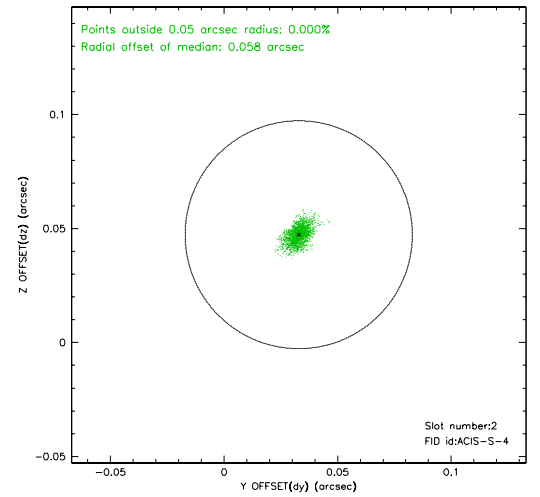
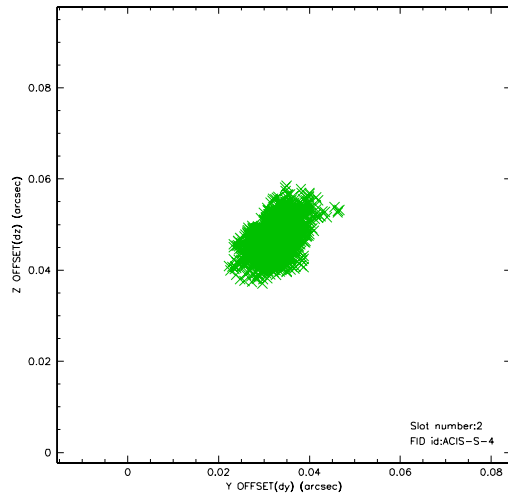
2.5.1 Slot 0



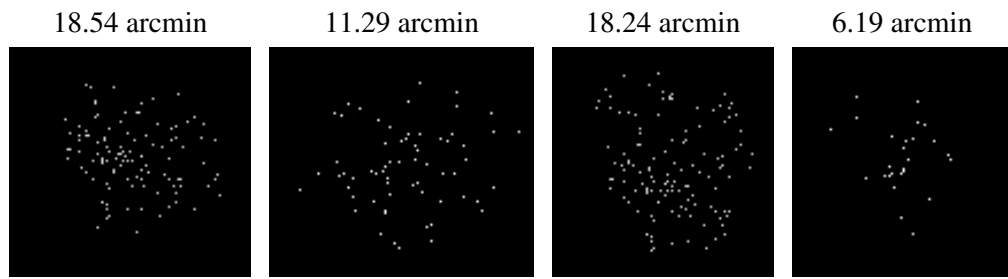
2.5.2 Slot 1



2.5.3 Slot 2



3 Point Sources



A Summary

A.1 Status

V&V Scientist	Jen Lauer
V&V Date (YYYY-MM-DD)	2006.03.15
V&V Edition	1
V&V Disposition and Status	OK
V&V Charge Time	8.510873

A.2 Comments

Window constraint met.