

V&V Reference Report

L2 ASCDS Version : 7.6.7.1

Observation 6350 - L2 Version 002
Chandra X-Ray Center

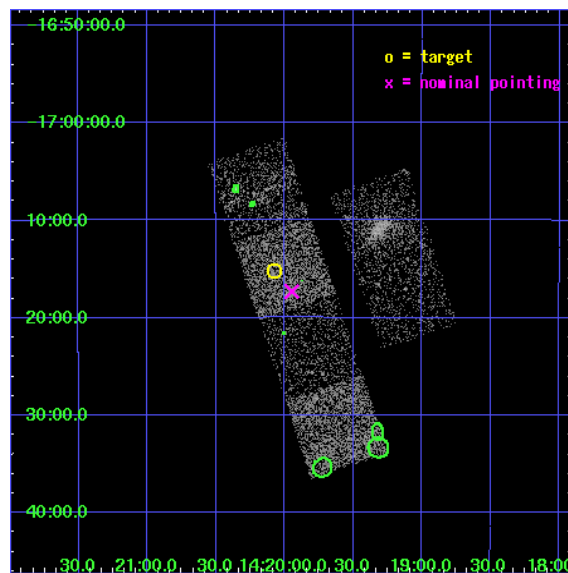
L2 Processing Date : Apr 7 2006

Contents

1	Front	2
2	OBI	3
2.1	OBI	3
2.1.1	Images	3
2.1.2	Bias	3
2.1.3	Parameters	4
2.1.4	Events	4
2.2	Compared Parameters	5
2.3	Aspect	6
2.4	Star Slots	9
2.4.1	Slot 3	9
2.4.2	Slot 4	10
2.4.3	Slot 5	11
2.4.4	Slot 6	12
2.4.5	Slot 7	13
2.5	FID Slots	14
2.5.1	Slot 0	14
2.5.2	Slot 1	15
2.5.3	Slot 2	16
3	Point Sources	17
A	Summary	18
A.1	Status	18
A.2	Comments	18

1 Front

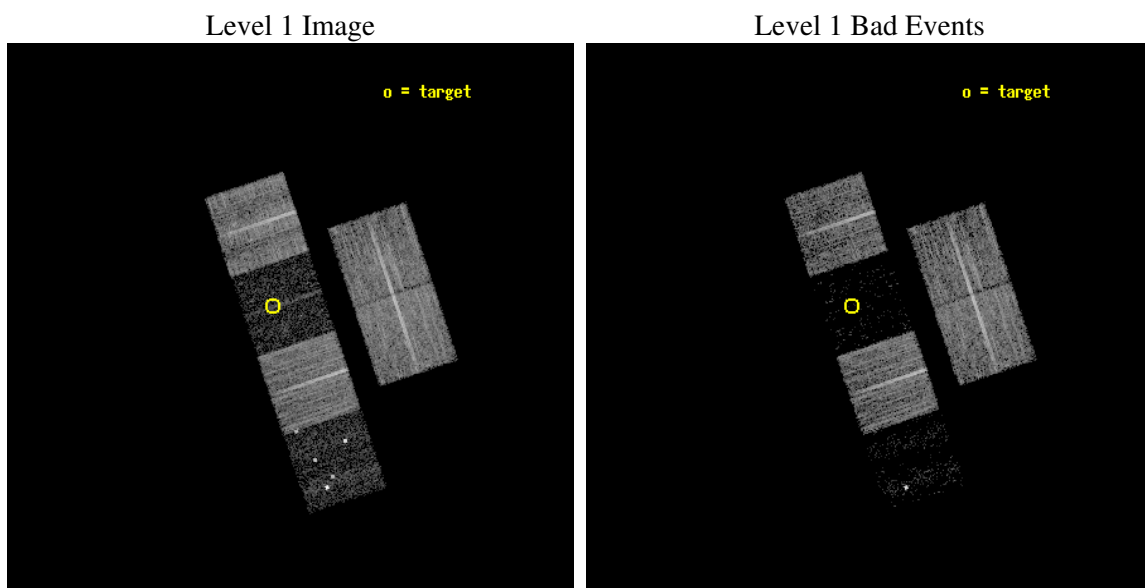
seq_num	100058
obs_id	6350
title	Comet 9P/Tempel 1 During the Deep Impact Encounter
observer	Dr. Carey Lisse
object	9P/Tempel 1
dtcycle	0
cycle	P
ra_targ	215.019174
dec_targ	-17.253822
ra_nom	214.98662563805
dec_nom	-17.288581297552
roll_nom	251.50915024225
revision	2
ontime	8179.1999695301
livetime	8075.630014593
ontime2	8175.9589992464
ontime3	8179.1999695301
ontime5	8179.1999695301
ontime6	8179.1999695301
ontime7	8179.1999695301
ontime8	8179.1999695301
l2events	12871



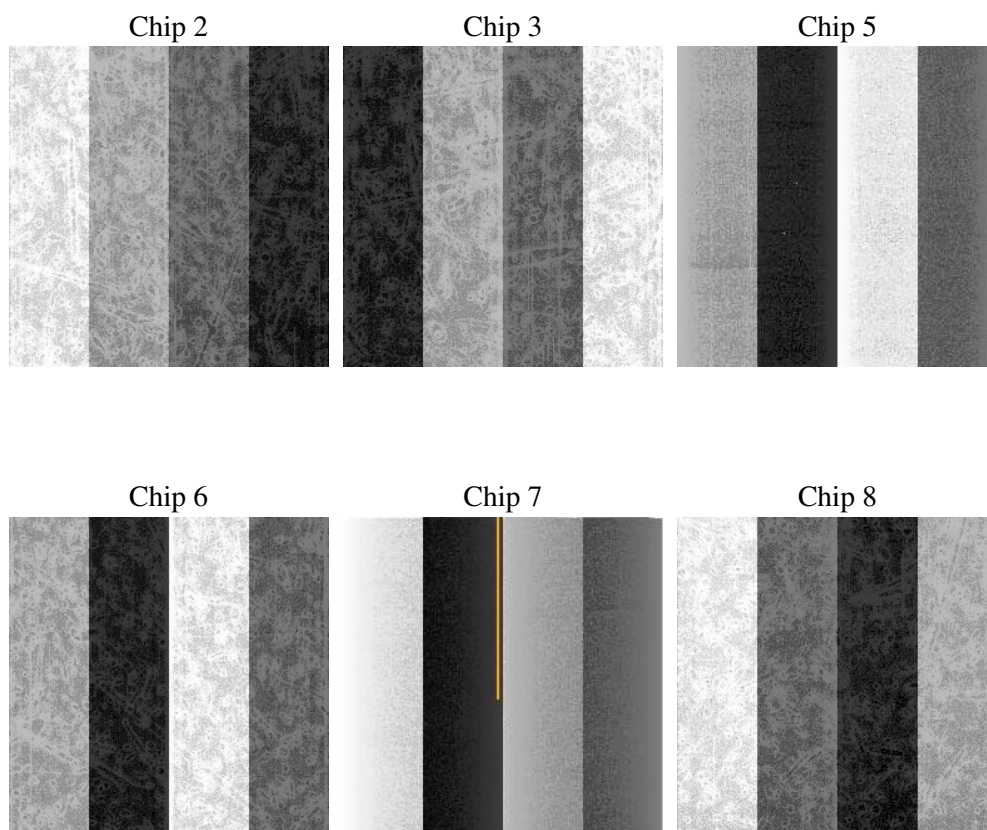
2 OBI

2.1 OBI

2.1.1 Images



2.1.2 Bias



2.1.3 Parameters

obi_num	0
ascdsver	7.6.7.1
caldbver	3.2.1
date	2006-03-15T17:09:30
revision	2

sched_exp_time	7999.000000
ontime	8507.6325293779
ontime2	8504.3915590942
ontime3	8510.8735494614
ontime5	8510.8735494614
ontime6	8510.8735494614
ontime7	8507.6325293779
ontime8	8510.8735494614
l1events	177560

2.1.4 Events

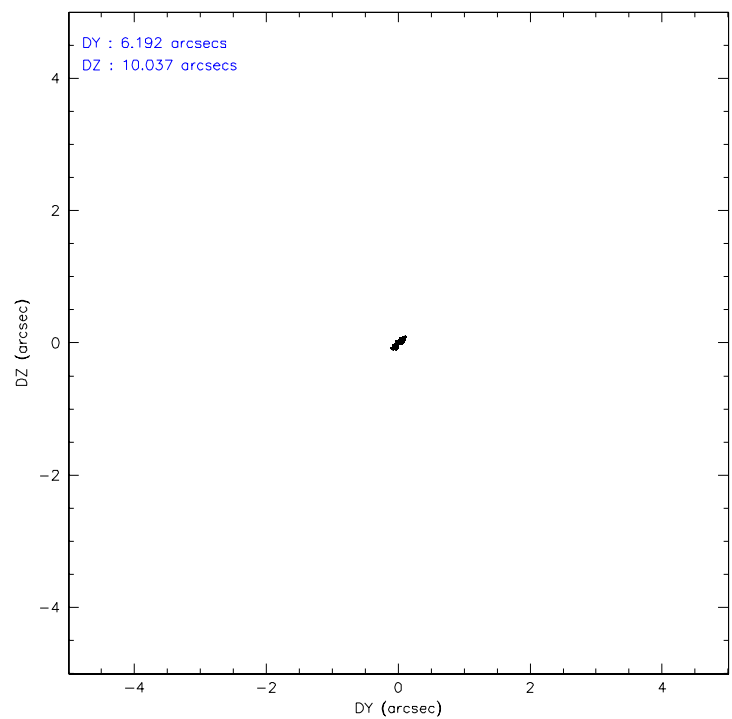
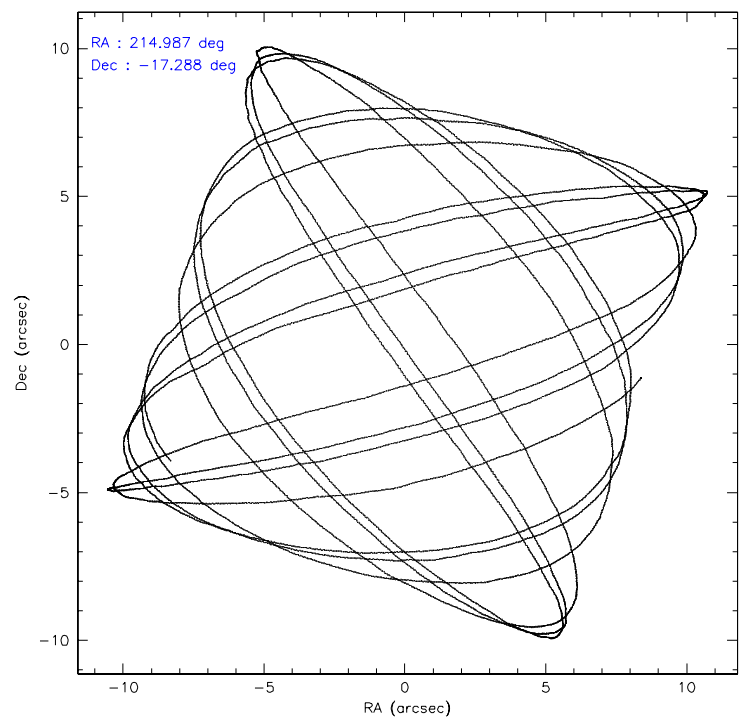
	ccd 2	ccd 3	ccd 5	ccd 6	ccd 7	ccd 8
level 1 events	43060	37723	10970	38681	5342	41784
rejected events	41370	35549	3259	37065	1198	31743
rejected %	96%	94%	29%	95%	22%	75%

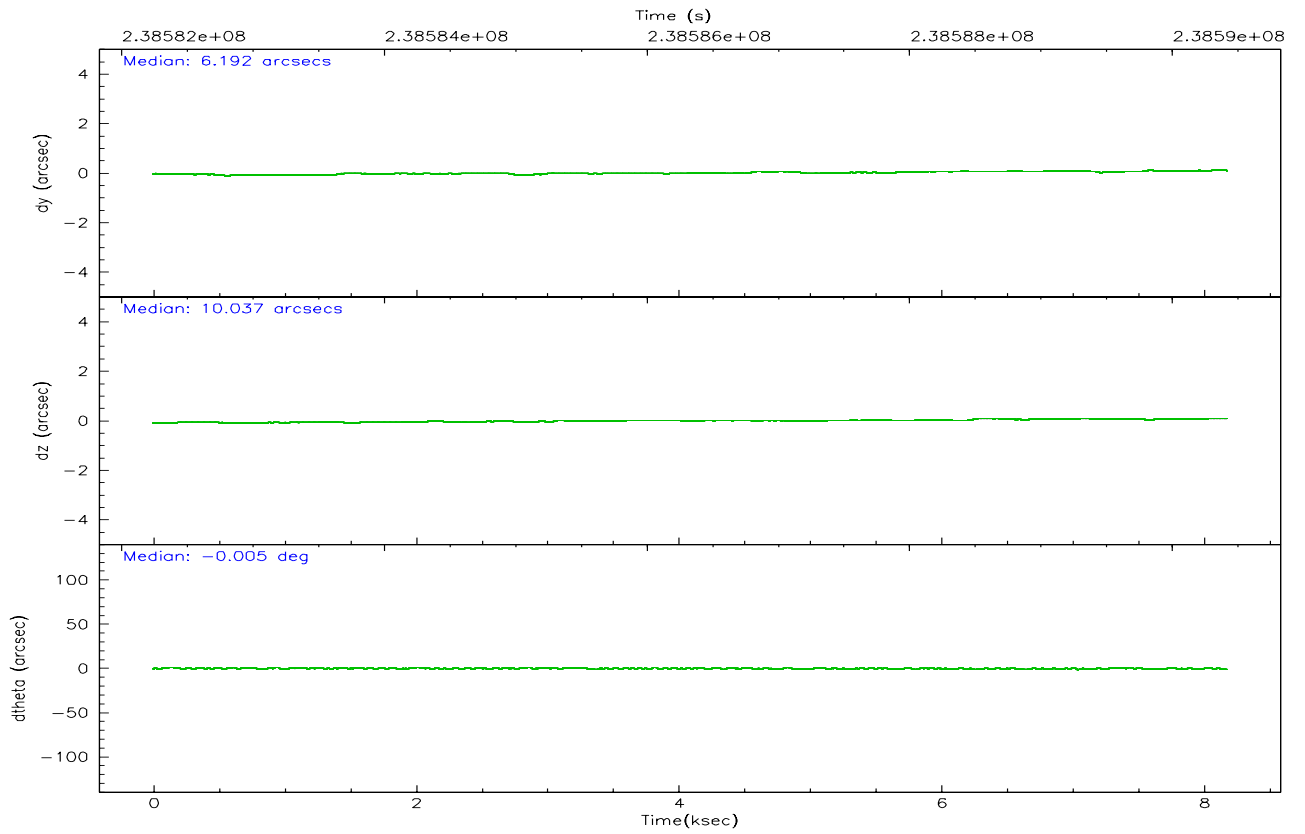
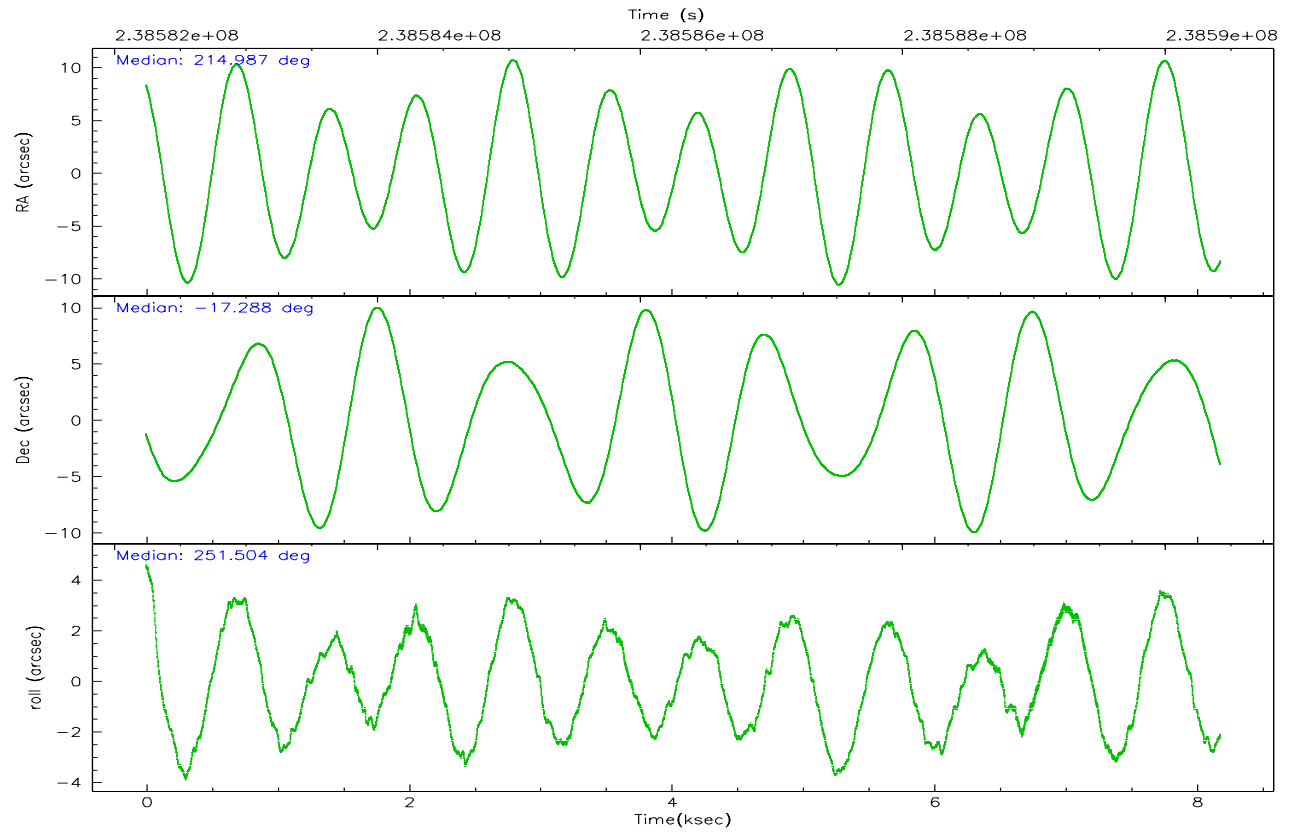
	ccd 2	ccd 3	ccd 5	ccd 6	ccd 7	ccd 8
grade 0 events	733	1467	4078	857	1100	3105
	1%	3%	37%	2%	20%	7%
grade 1 events	10	10	993	9	14	24
	0%	0%	9%	0%	0%	0%
grade 2 events	392	226	2129	257	1418	2265
	0%	0%	19%	0%	26%	5%
grade 3 events	212	232	640	243	626	1279
	0%	0%	5%	0%	11%	3%
grade 4 events	230	225	658	231	608	1137
	0%	0%	5%	0%	11%	2%
grade 5 events	50	41	288	27	119	204
	0%	0%	2%	0%	2%	0%
grade 6 events	193	122	570	106	534	2716
	0%	0%	5%	0%	9%	6%
grade 7 events	41240	35400	1614	36951	923	31054
	95%	93%	14%	95%	17%	74%

2.2 Compared Parameters

Parameter	Planned	Actual	Parameter	Planned	Actual
Instrument	ACIS	ACIS	Obspar format version number	6	6
Detector	ACIS-235678	ACIS-235678	Obspar file type	PREDICTED	ACTUAL
Grating	NONE	NONE	Obspar update status	NONE	UPDATED
Data mode	VFAINT	VFAINT	On-chip summing requested	N	N
Observation mode	POINTING	POINTING	Subarray requested	NONE	NONE
Pointing RA	214.980573	214.9866256380546	Alternating exposures requested	N	N
Pointing Dec	-17.261983	-17.28858129755162	Primary exposure time	0.000000	3.2
Pointing Roll	251.350725	251.5091502422549			
Window start time	238572064.184000	238572064.184000			
Window stop time	238615264.184000	238615264.184000			
SIM focus pos (mm)	-0.684267	-0.6828225247311905			
SIM defocus (mm)	0	0.001444936568705701			
SIM translation stage pos (mm)	-190.132523	-190.1400660498719			
SIM translation stage offset (mm)	0	0.00754346686406393			
Observation start time	238582413.184000	238582037.20184			
Observation start date	2005-07-24T08:52:29	2005-07-24T08:47:17			
Observation end time	238590412.184000	238590545.72723			
Observation end date	2005-07-24T11:05:48	2005-07-24T11:09:05			
Read mode	TIMED	TIMED			

2.3 Aspect



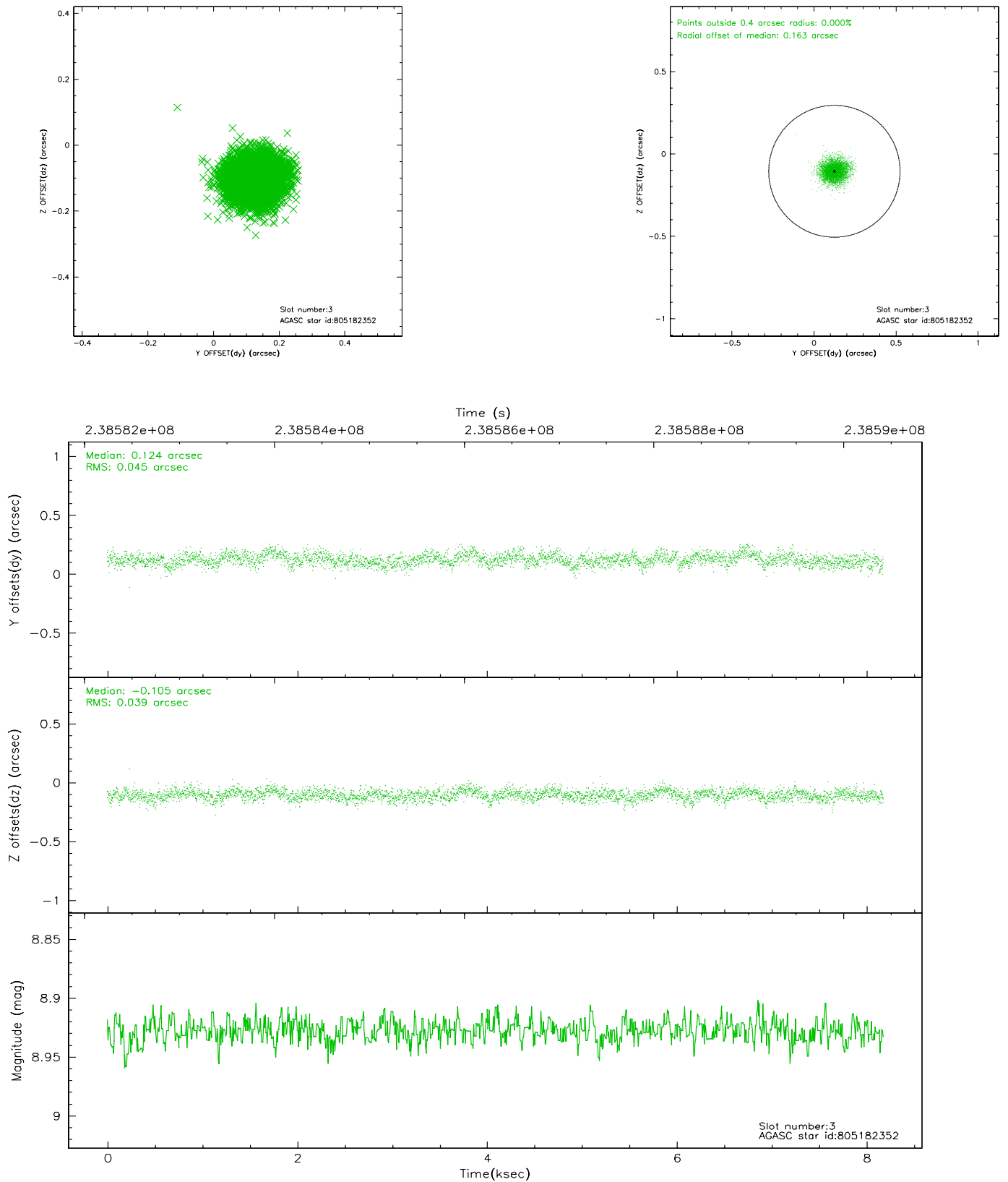


Slot Statistics

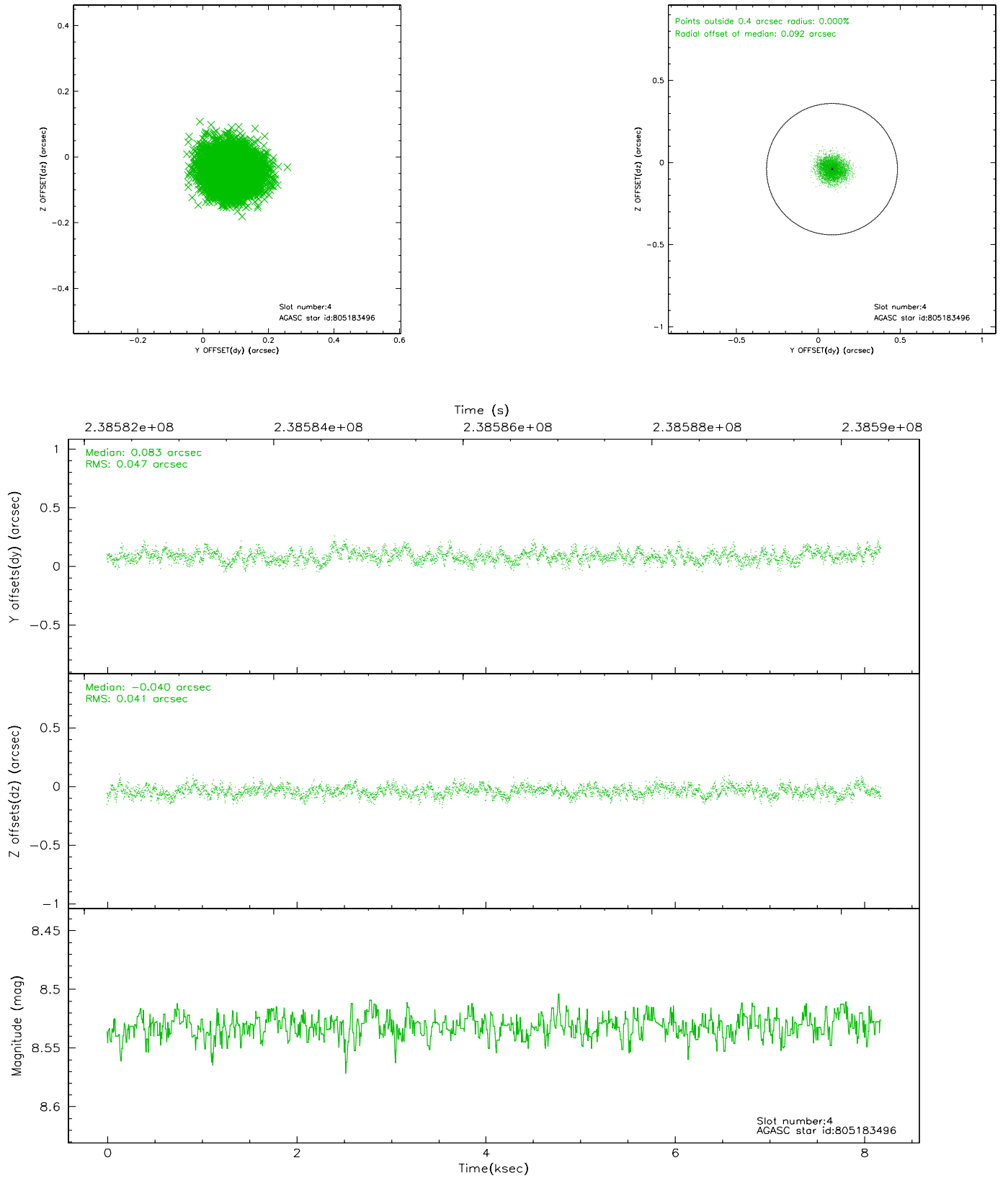
slot	status	id	mag	n_pts	med_dy	med_dz	dr1	dr2	ra	dec	mean_y	mean_z
0	FID	ACIS-S-2	7.10	1995	-0.059	-0.006	0.006	0.010	0.000000	0.000000	-758.96	-1731.30
1	FID	ACIS-S-4	7.21	1995	0.068	0.030	0.005	0.009	0.000000	0.000000	2154.10	176.56
2	FID	ACIS-S-5	7.23	1995	-0.040	-0.016	0.006	0.010	0.000000	0.000000	-1810.94	170.89
3	GUIDE	805182352	8.93	3989	0.124	-0.105	0.063	0.104	214.624580	-17.686015	1838.34	-668.17
4	GUIDE	805183496	8.53	3989	0.083	-0.040	0.068	0.105	214.568748	-17.733891	2063.69	-794.41
5	GUIDE	805185120	8.60	3987	-0.032	0.006	0.061	0.103	215.253528	-17.793163	1514.02	1498.34
6	GUIDE	805187072	8.72	3989	-0.091	0.088	0.065	0.105	215.513645	-17.149952	-965.74	1609.86
7	GUIDE	805188160	8.97	3989	-0.089	0.053	0.073	0.114	215.356854	-16.987214	-1350.48	912.12

2.4 Star Slots

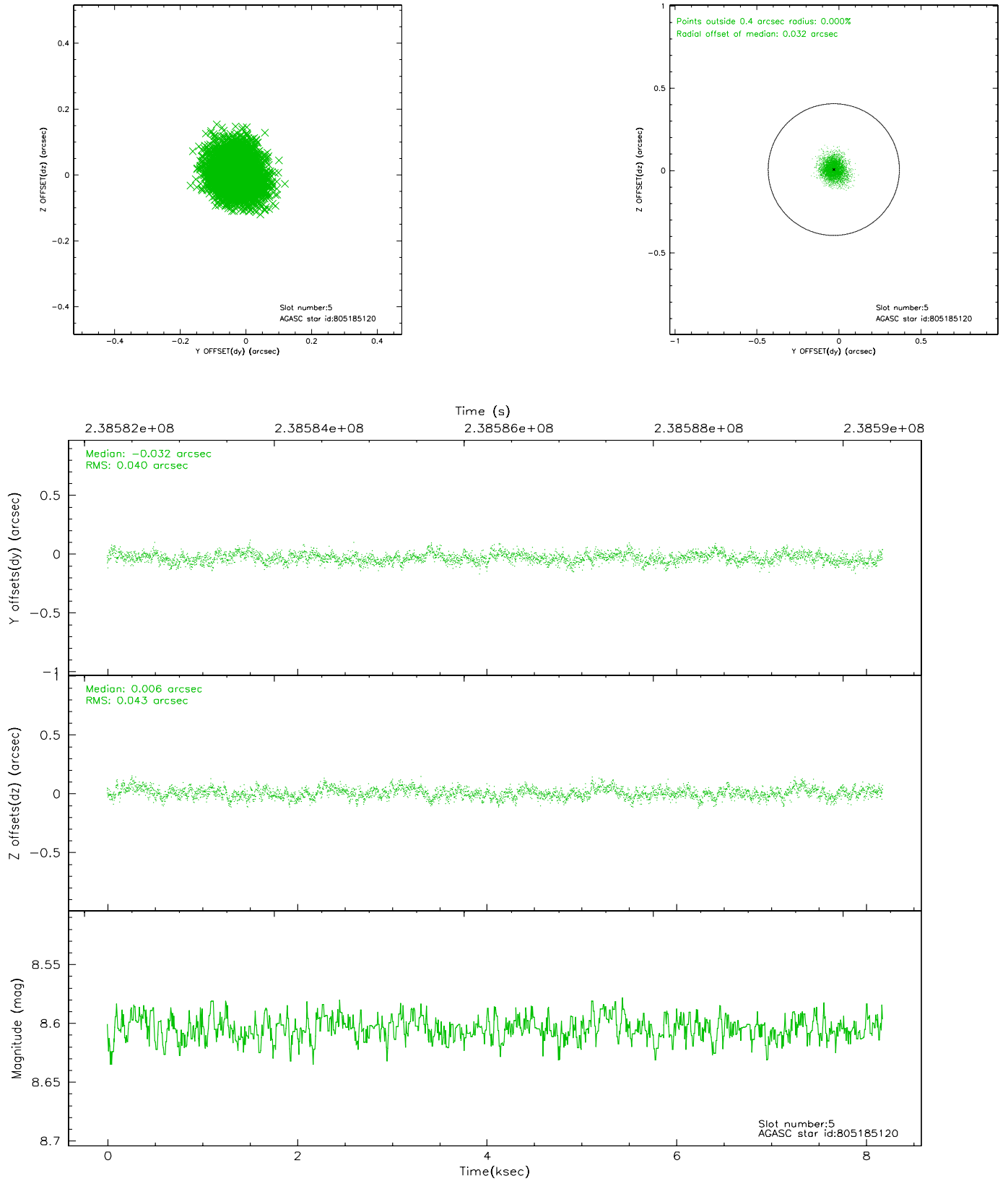
2.4.1 Slot 3



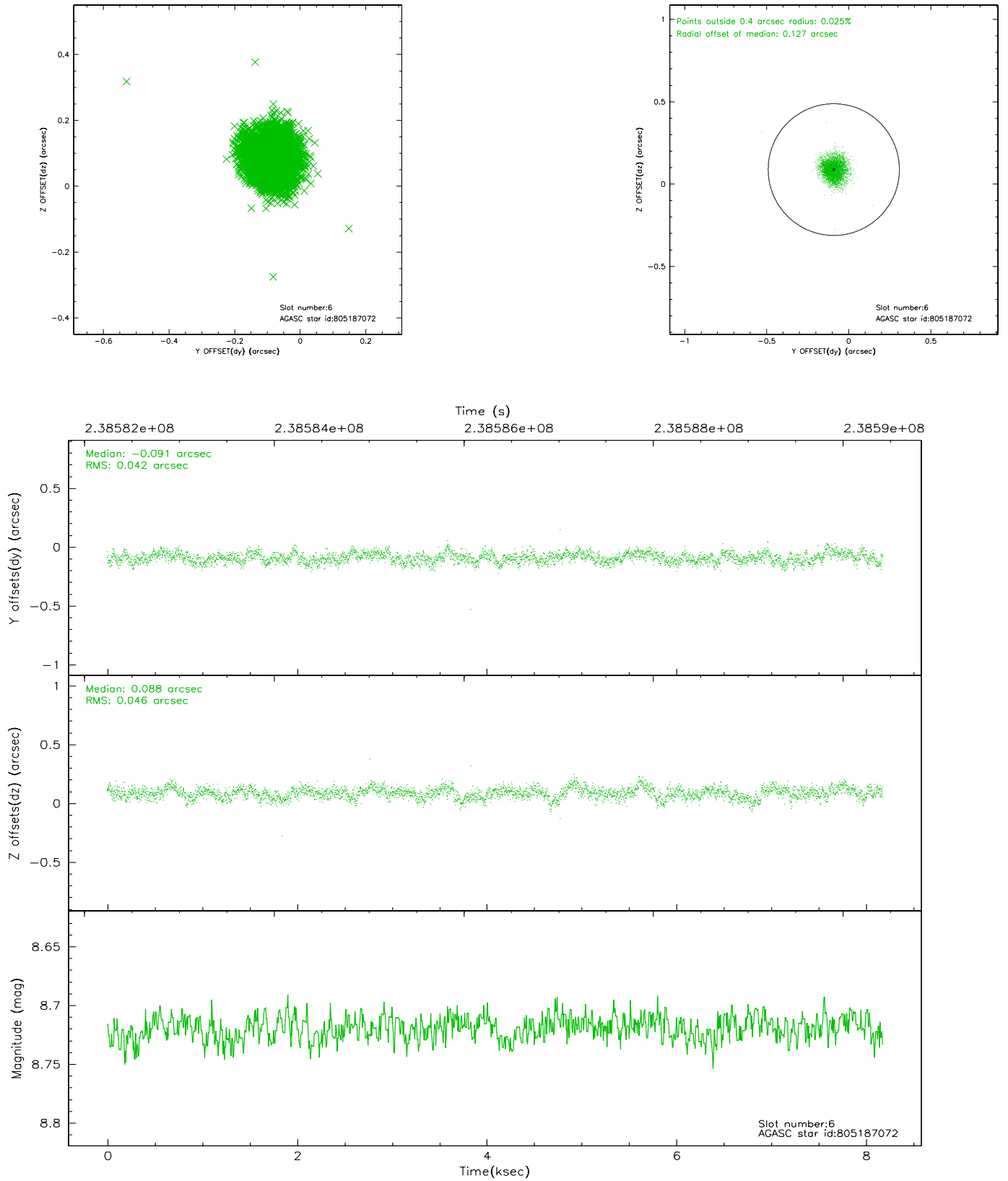
2.4.2 Slot 4



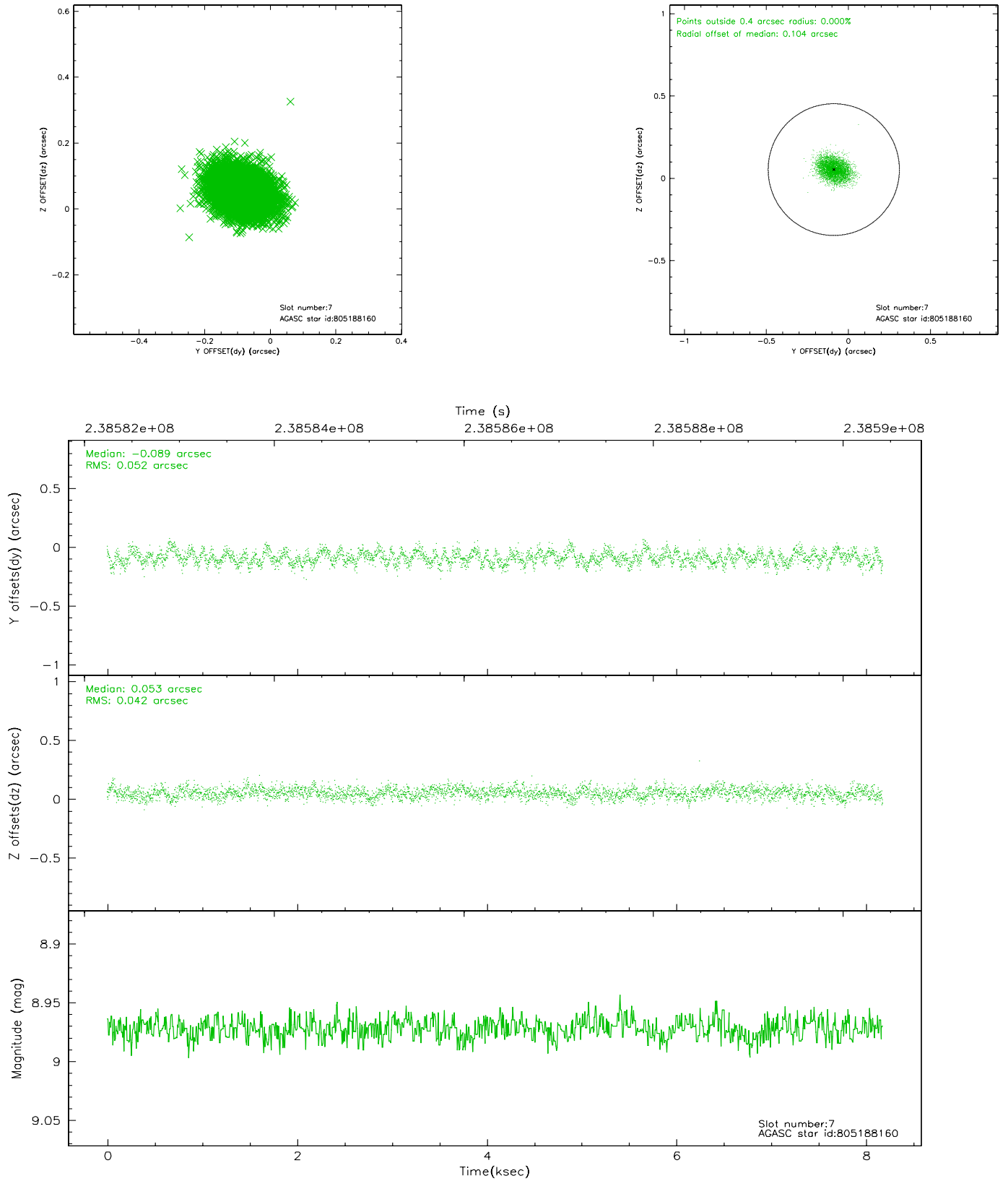
2.4.3 Slot 5



2.4.4 Slot 6

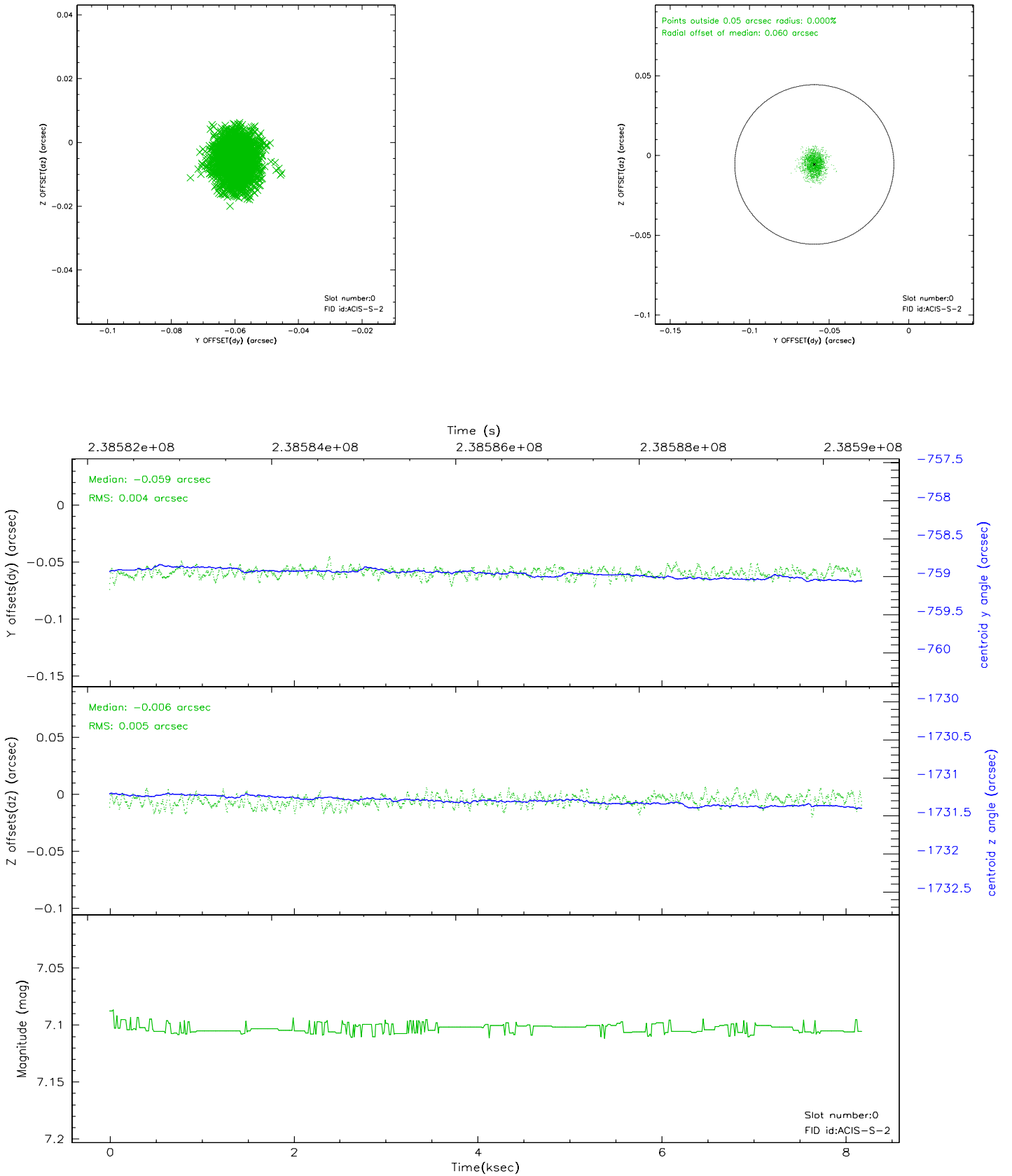


2.4.5 Slot 7

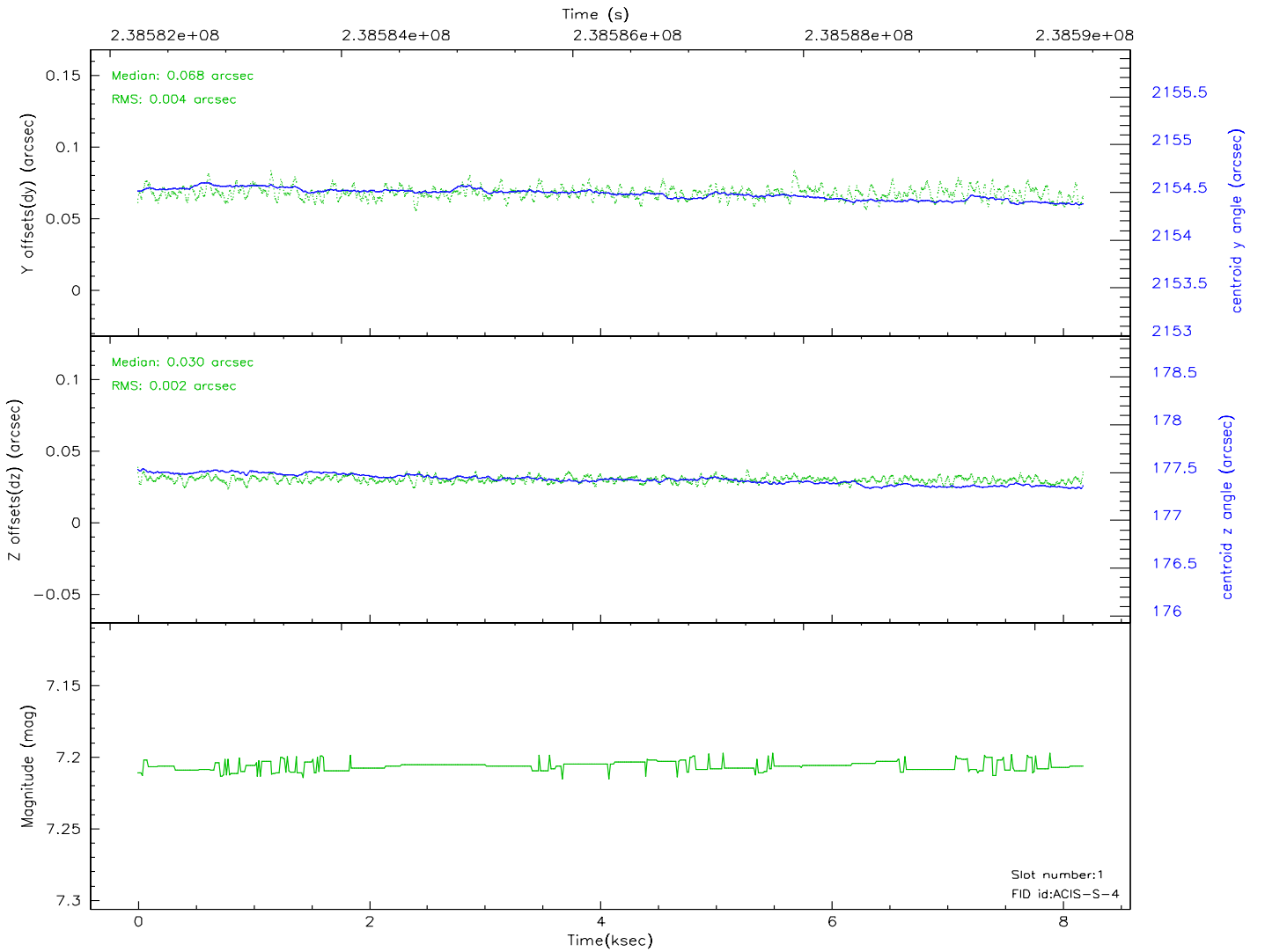
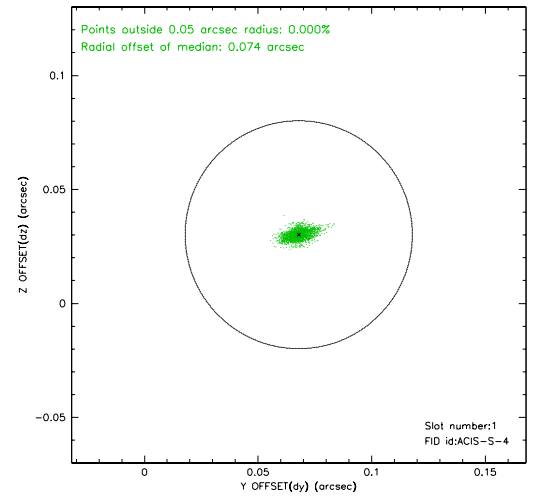
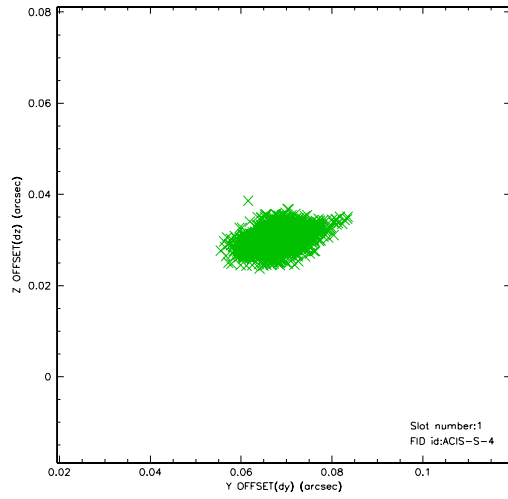


2.5 FID Slots

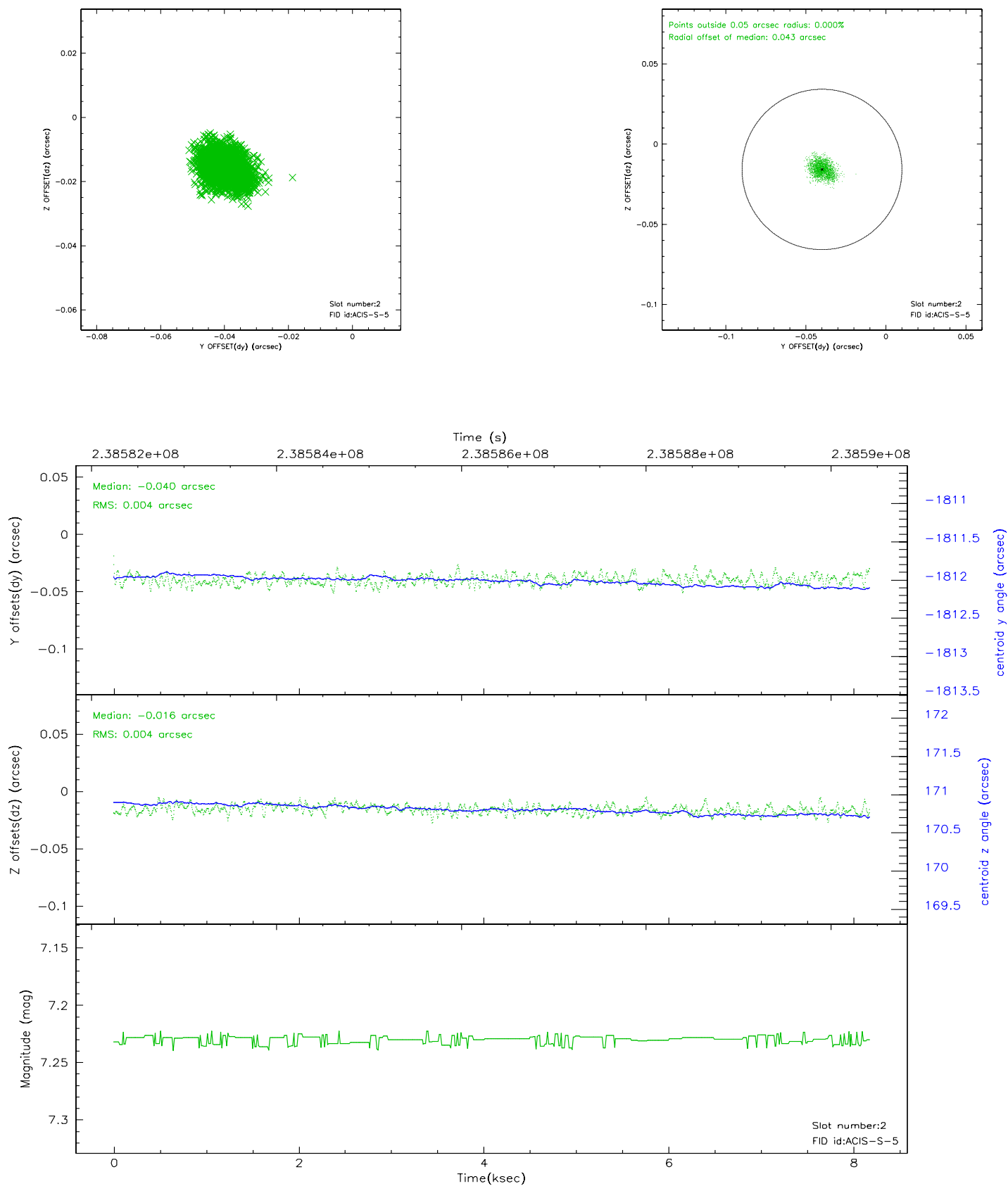
2.5.1 Slot 0



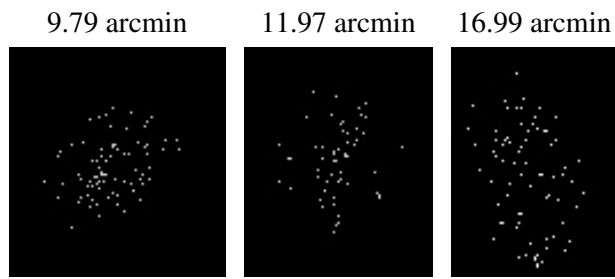
2.5.2 Slot 1



2.5.3 Slot 2



3 Point Sources



A Summary

A.1 Status

V&V Scientist	Beth Sundheim
V&V Date (YYYY-MM-DD)	2006.04.10
V&V Edition	1
V&V Disposition and Status	OK
V&V Charge Time	8.507632

A.2 Comments

Window constraint satisfied.

Focal plane temperature is slightly elevated at start of observation.