

V&V Reference Report

L2 ASCDS Version : 8.5.1.1

Observation 6338 - L2 Version 3
Chandra X-Ray Center

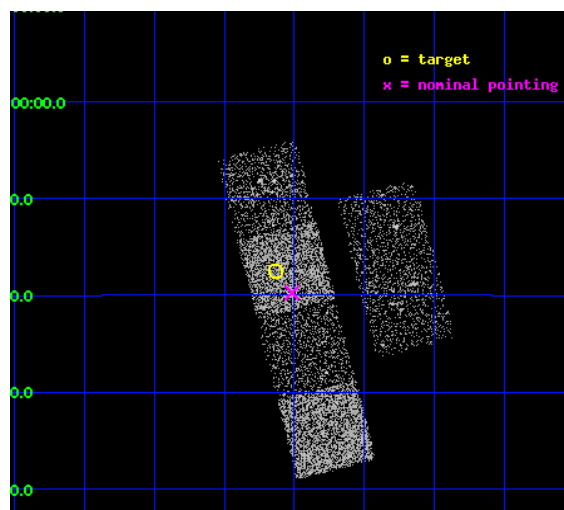
L2 Processing Date : Dec 26 2012

Contents

1	Front	2
2	OBI	3
2.1	OBI	3
2.1.1	Images	3
2.1.2	Bias	3
2.1.3	Parameters	4
2.1.4	Events	4
2.2	Compared Parameters	5
2.3	Aspect	6
2.4	Star Slots	9
2.4.1	Slot 3	9
2.4.2	Slot 4	10
2.4.3	Slot 5	11
2.4.4	Slot 6	12
2.4.5	Slot 7	13
2.5	FID Slots	14
2.5.1	Slot 0	14
2.5.2	Slot 1	15
2.5.3	Slot 2	16
A	Summary	17
A.1	Status	17
A.2	Comments	17

1 Front

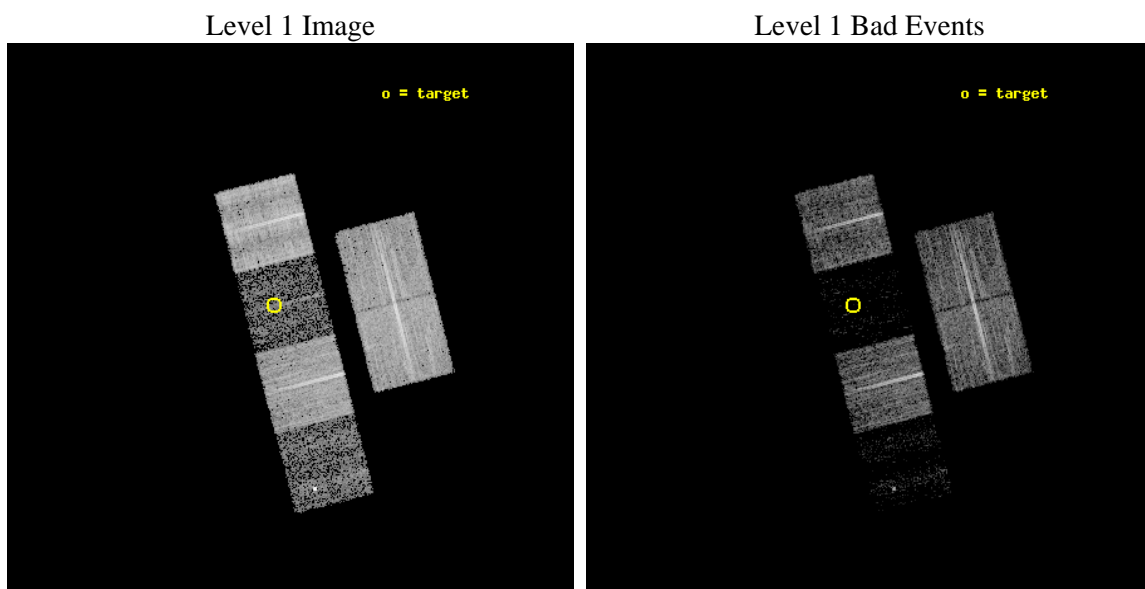
seq_num	100056	Sequence number
obs_id	6338	Observation id
title	Comet 9P/Tempel 1 During the Deep Impact Encounter	Proposal title
observer	Dr. Carey Lisse	Principal investigator
object	9P/Tempel 1	Source name
dtcycle	0	
cycle	P	events from which exps? Prim/Second/Both
ra_targ	207.783554	Observer's specified target RA [deg]
dec_targ	-12.292218	Observer's specified target Dec [deg]
ra_nom	207.75446268024	Nominal RA [deg]
dec_nom	-12.329248107907	Nominal Dec [deg]
roll_nom	255.72040095249	Nominal Roll [deg]
revision	3	Processing version of data
ontime	8537.599968195	Sum of GTIs [s]
livetime	8429.4917366722	Livetime [s]
ontime2	8537.599968195	Sum of GTIs [s]
ontime3	8537.599968195	Sum of GTIs [s]
ontime5	8537.599968195	Sum of GTIs [s]
ontime6	8537.599968195	Sum of GTIs [s]
ontime7	8537.599968195	Sum of GTIs [s]
ontime8	8537.599968195	Sum of GTIs [s]
l2events	12773	Number of level 2 events



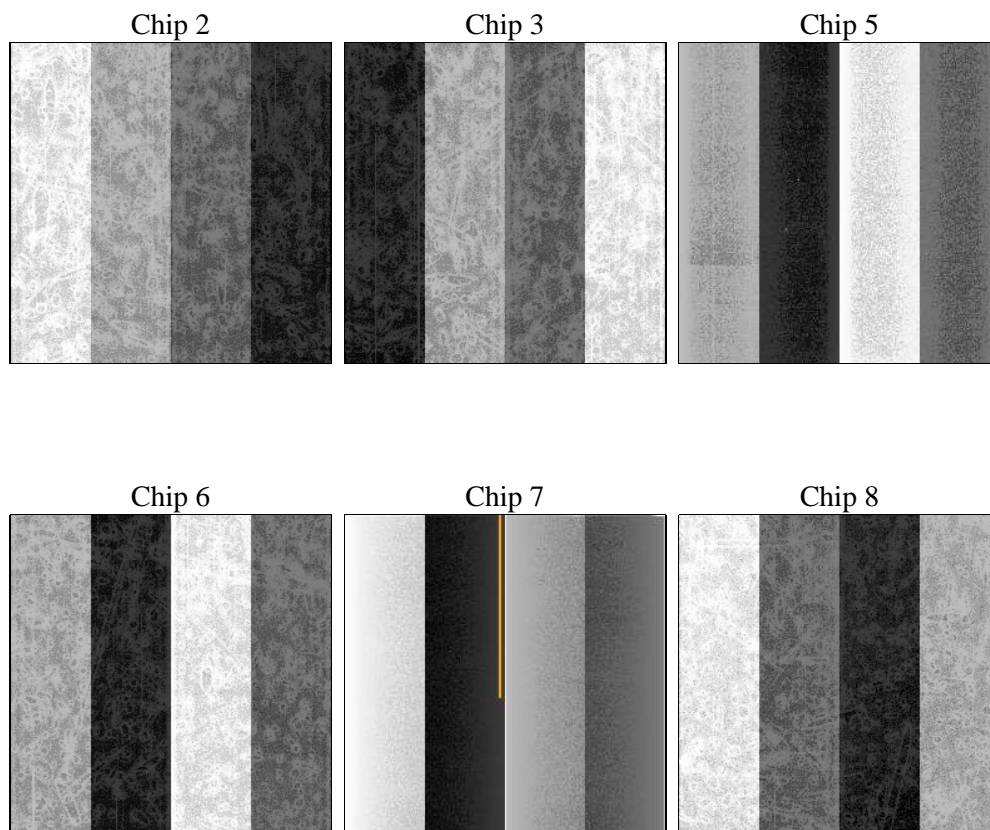
2 OBI

2.1 OBI

2.1.1 Images



2.1.2 Bias



2.1.3 Parameters

obi_num	0	Obi number	sched_exp_time	8350.000000	[s] Scheduled observation exposure time
ascdsver	8.5.1.1	Processing system revision	ontime	8537.599968195	Sum of GTIs [s]
caldsver	4.5.5	 	ontime2	8537.599968195	Sum of GTIs [s]
date	2012-12-26T00:05:39	Date and time of file creation	ontime3	8537.599968195	Sum of GTIs [s]
revision	3	Processing version of data	ontime5	8537.599968195	Sum of GTIs [s]
			ontime6	8537.599968195	Sum of GTIs [s]
			ontime7	8537.599968195	Sum of GTIs [s]
			ontime8	8537.599968195	Sum of GTIs [s]
			l1events	184109	Number of level 1 events

2.1.4 Events

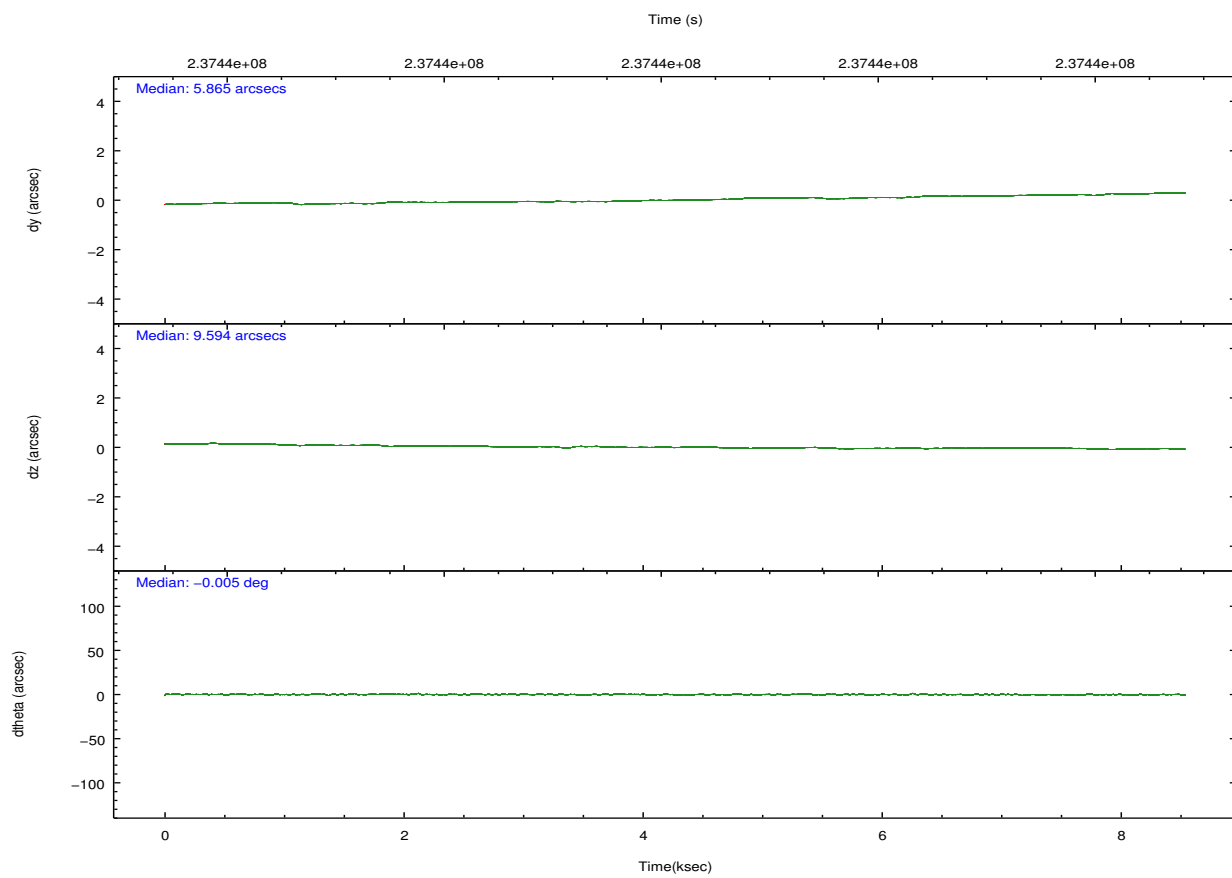
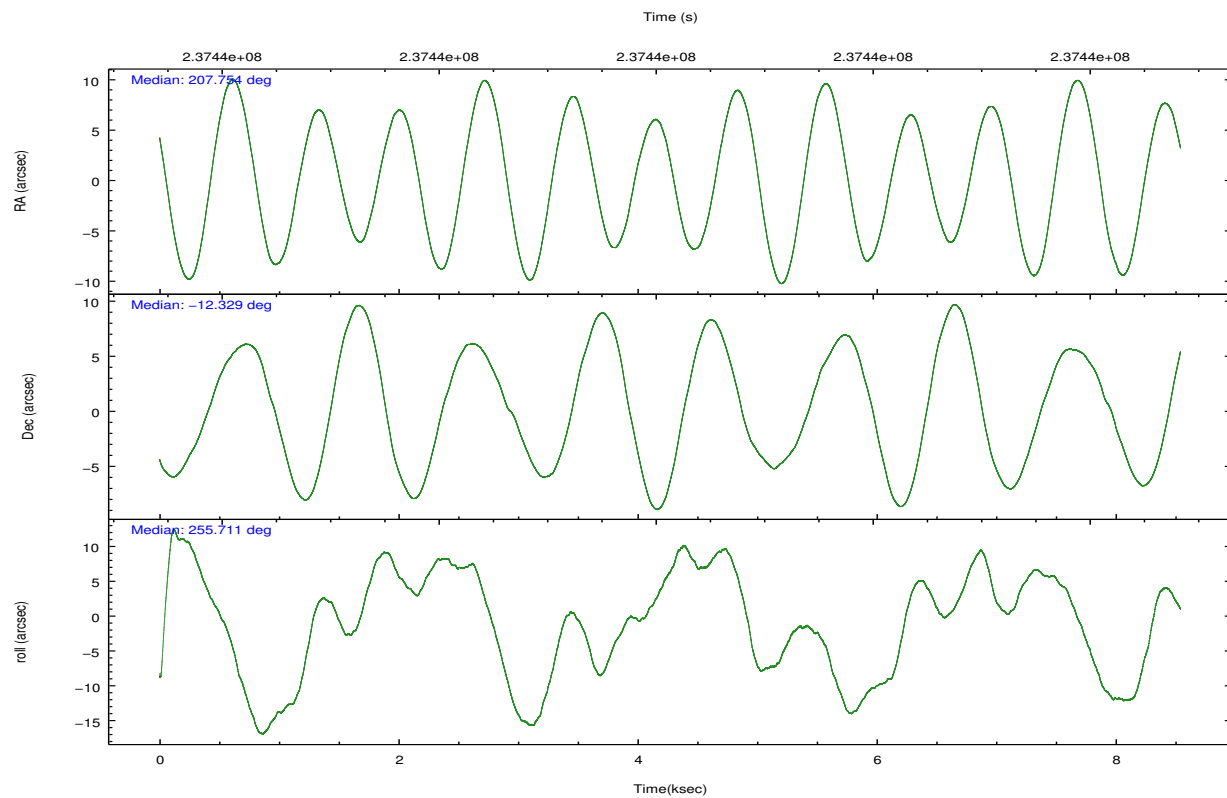
	ccd 2	ccd 3	ccd 5	ccd 6	ccd 7	ccd 8
level 1 events	44044	36796	8760	38096	5924	50489
rejected events	42090	35501	3182	36252	1578	33718
rejected %	95%	96%	36%	95%	26%	66%

	ccd 2	ccd 3	ccd 5	ccd 6	ccd 7	ccd 8
grade 0 events	1005	648	1717	1040	1243	5858
	2%	1%	19%	2%	20%	11%
grade 1 events	14	6	37	11	36	51
	0%	0%	0%	0%	0%	0%
grade 2 events	447	179	1820	334	1594	2949
	1%	0%	20%	0%	26%	5%
grade 3 events	197	227	1169	250	648	2772
	0%	0%	13%	0%	10%	5%
grade 4 events	289	187	649	222	605	2509
	0%	0%	7%	0%	10%	4%
grade 5 events	65	25	437	28	193	295
	0%	0%	4%	0%	3%	0%
grade 6 events	158	118	583	107	546	3703
	0%	0%	6%	0%	9%	7%
grade 7 events	41869	35406	2348	36104	1059	32352
	95%	96%	26%	94%	17%	64%

2.2 Compared Parameters

Parameter	Planned	Actual	Parameter	Planned	Actual
Instrument	ACIS	ACIS	Obspar format version number	7	7
Detector	ACIS-235678	ACIS-235678	Obspar file type	PREDICTED	ACTUAL
Grating	NONE	NONE	Obspar update status	NONE	UPDATED
Data mode	VFAINT	VFAINT	Number of optional ACIS chips dropped	0	0
Observation mode	POINTING	POINTING	On-chip summing requested	N	N
[deg] Pointing RA	207.746548	207.7544626802444	Subarray requested	NONE	NONE
[deg] Pointing Dec	-12.303064	-12.32924810790724	Alternating exposures requested	N	N
[deg] Pointing Roll	255.562108	255.720400952493	[s] Primary exposure time	0.000000	3.2
[mm] SIM focus pos	-0.684267	-0.6828225247311905			
[mm] SIM defocus	0	0.001444936568705701			
[mm] SIM translation stage pos	-190.132523	-190.1400660498719			
[mm] SIM translation stage offset	0	0.00754346686406393			
[s] Observation start time (MET)	237436043.184000	237435536.72436			
Observation start date	2005-07-11T02:26:19	2005-07-11T02:18:56			
[s] Observation end time (MET)	237444393.184000	237444658.19978			
Observation end date	2005-07-11T04:45:29	2005-07-11T04:50:58			
Read mode	TIMED	TIMED			

2.3 Aspect

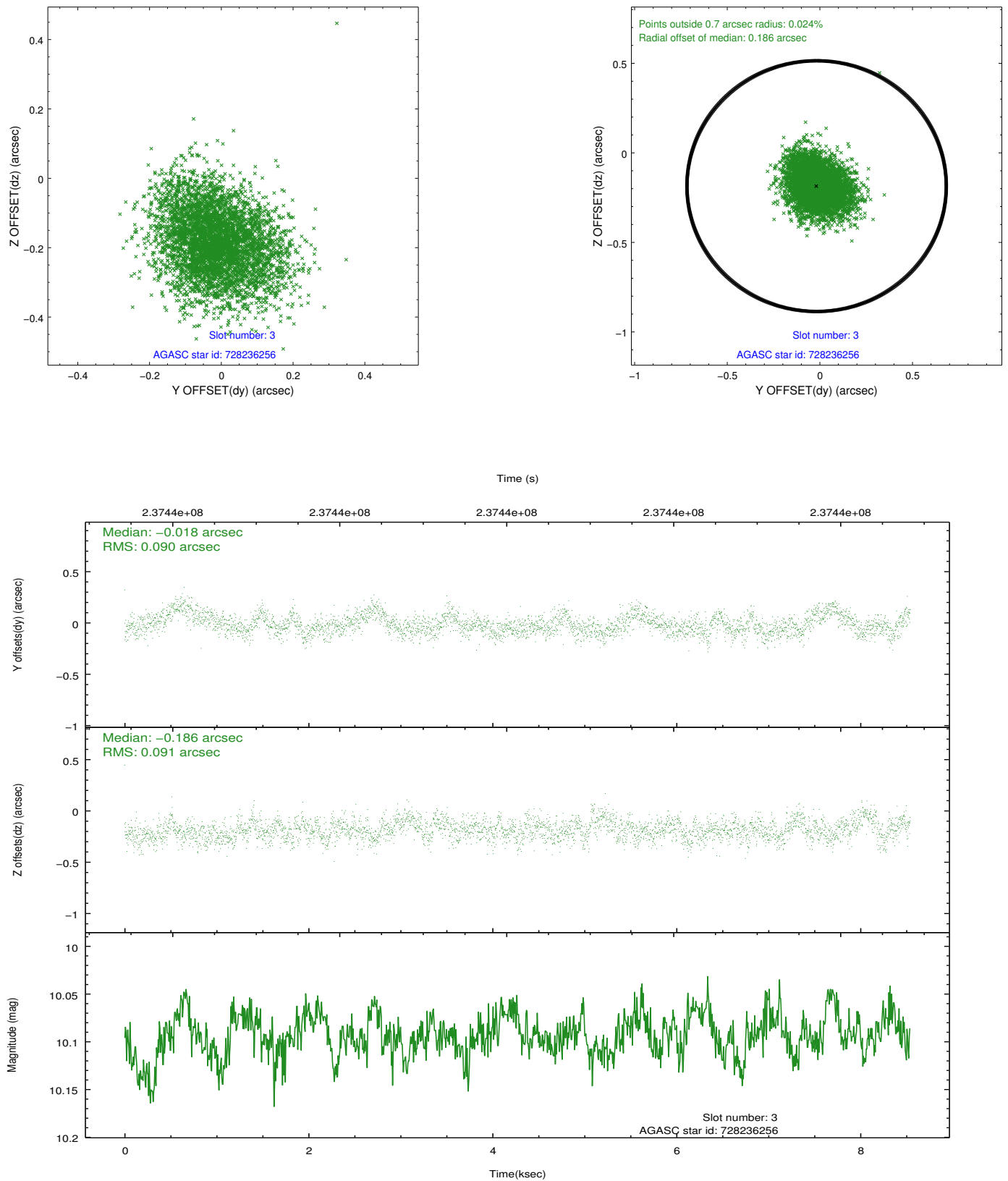


Slot Statistics

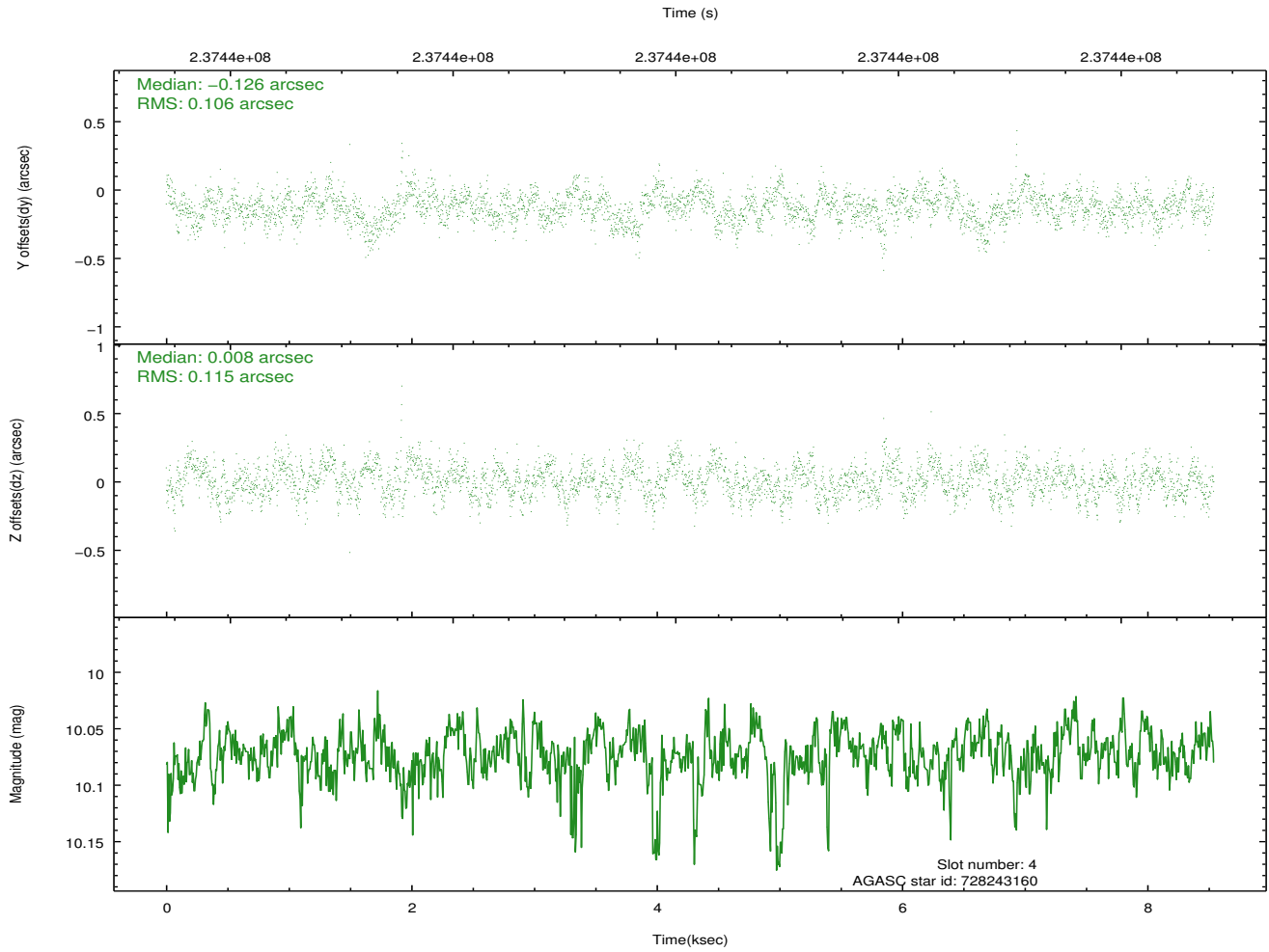
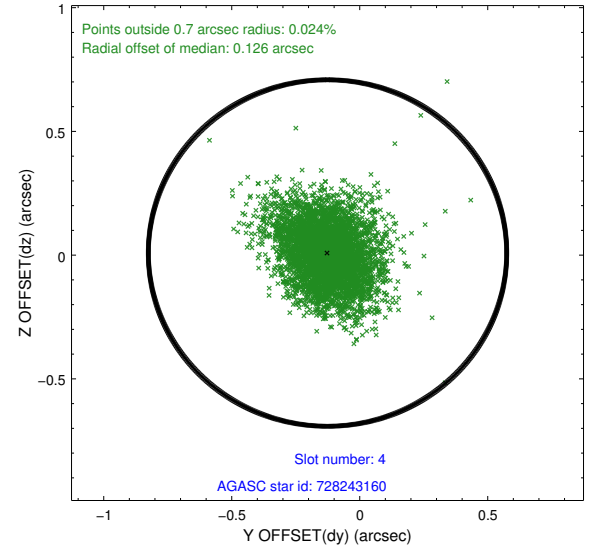
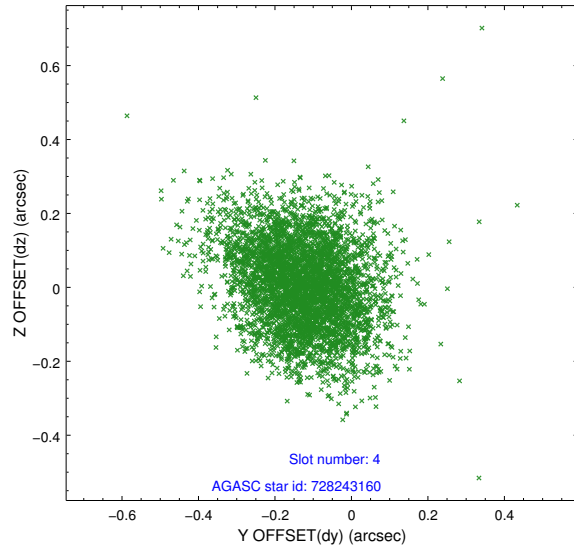
slot	status	id	mag	n_pts	med_dy	med_dz	dr1	dr2	ra	dec	mean_y	mean_z
0	FID	ACIS-S-2	7.10	2084	-0.071	-0.047	0.007	0.012	0.000000	0.000000	-758.66	-1730.90
1	FID	ACIS-S-4	7.21	2084	0.124	0.047	0.006	0.013	0.000000	0.000000	2154.49	177.04
2	FID	ACIS-S-5	7.23	2084	-0.084	0.009	0.007	0.011	0.000000	0.000000	-1810.71	171.36
3	GUIDE	728236256	10.09	4159	-0.018	-0.186	0.135	0.218	207.126175	-12.399367	882.52	-2024.99
4	GUIDE	728243160	10.07	4126	-0.126	0.008	0.164	0.270	208.309960	-11.797392	-2256.08	1468.93
5	GUIDE	728246264	10.51	4163	0.009	-0.008	0.304	0.443	207.655266	-11.635836	-2246.13	-910.32
6	GUIDE	728632856	10.57	4136	0.095	0.118	0.206	0.328	208.274834	-12.910844	1657.87	2341.78
7	GUIDE	728633928	10.35	4160	0.027	0.065	0.277	0.424	208.253445	-12.706055	962.98	2087.24

2.4 Star Slots

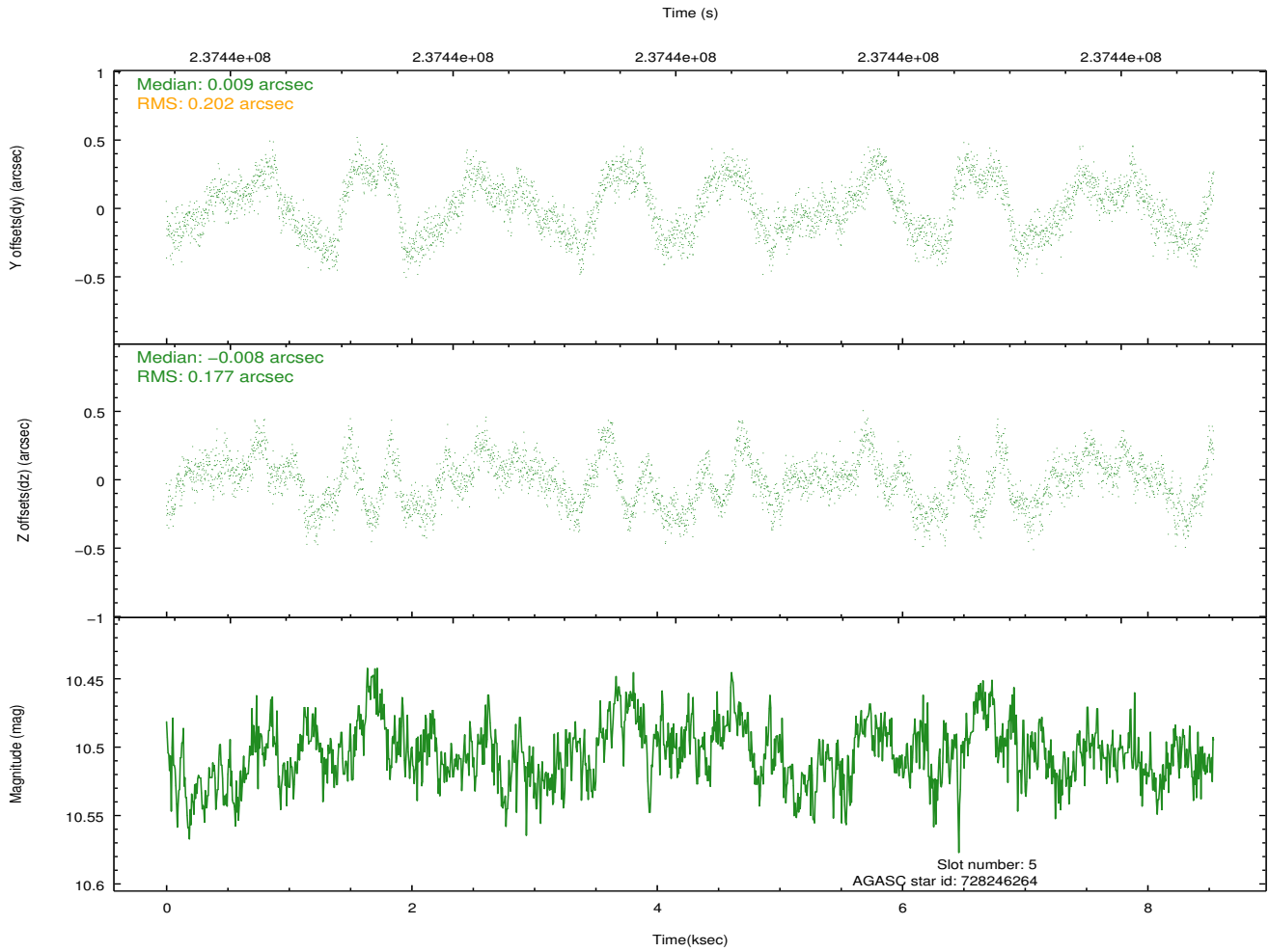
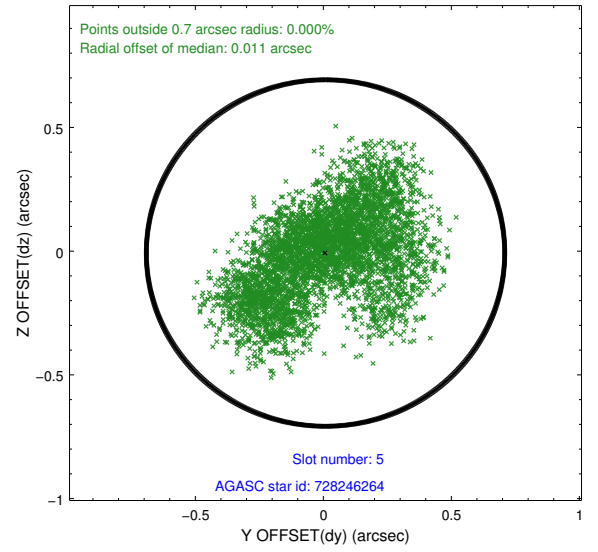
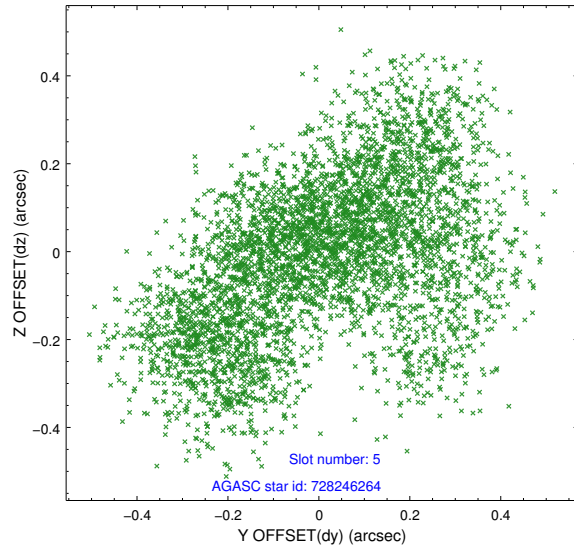
2.4.1 Slot 3



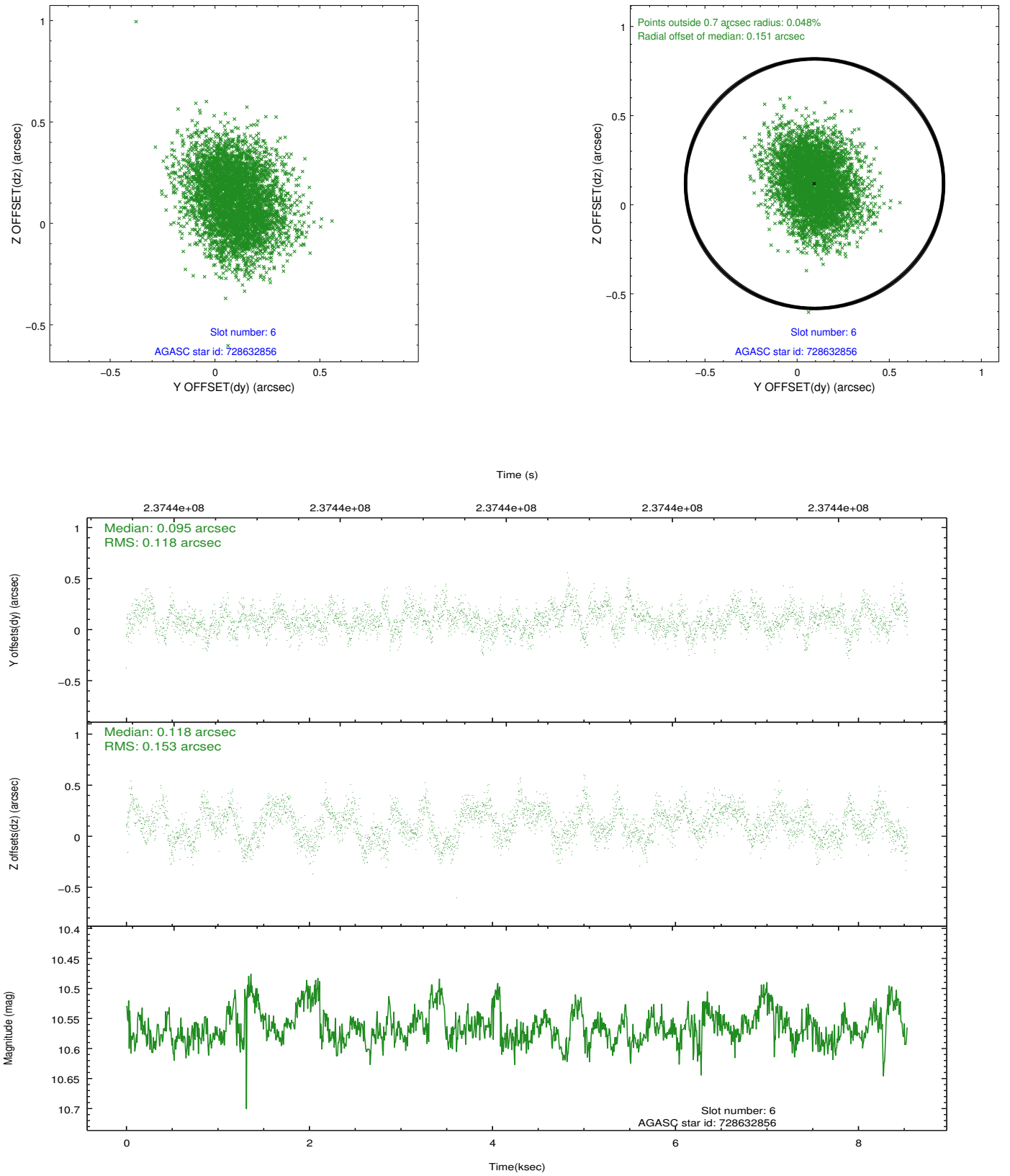
2.4.2 Slot 4



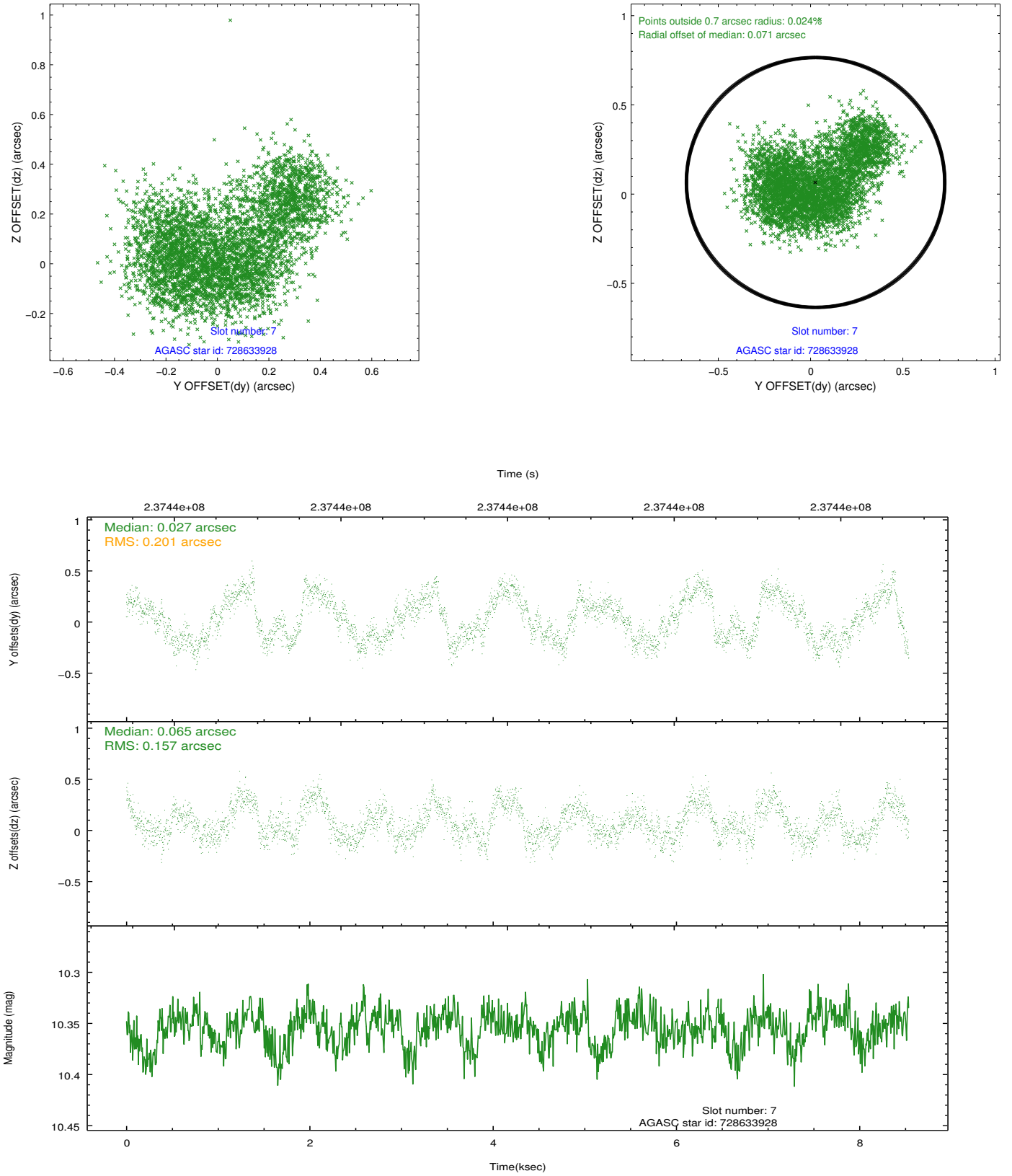
2.4.3 Slot 5



2.4.4 Slot 6

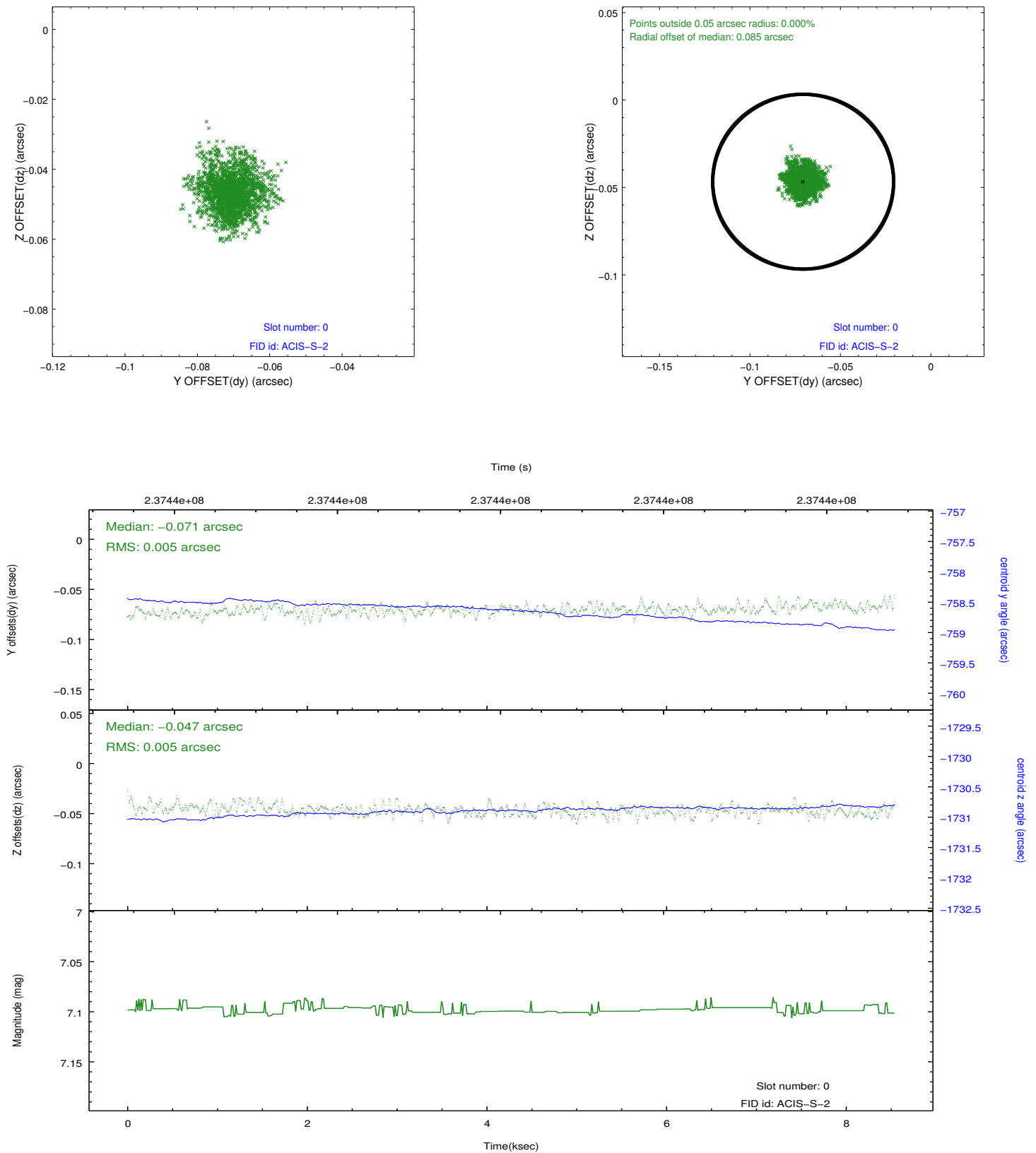


2.4.5 Slot 7

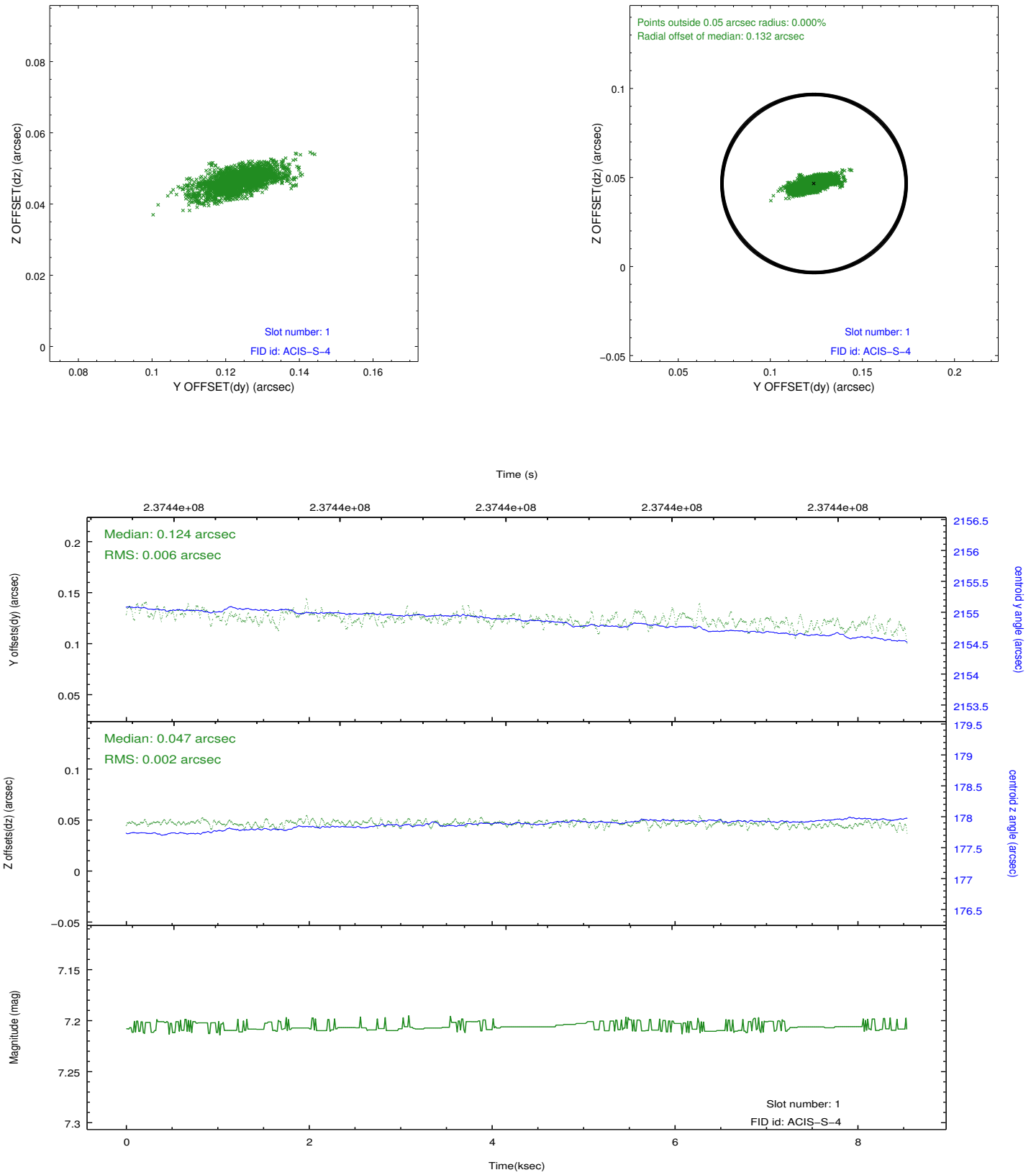


2.5 FID Slots

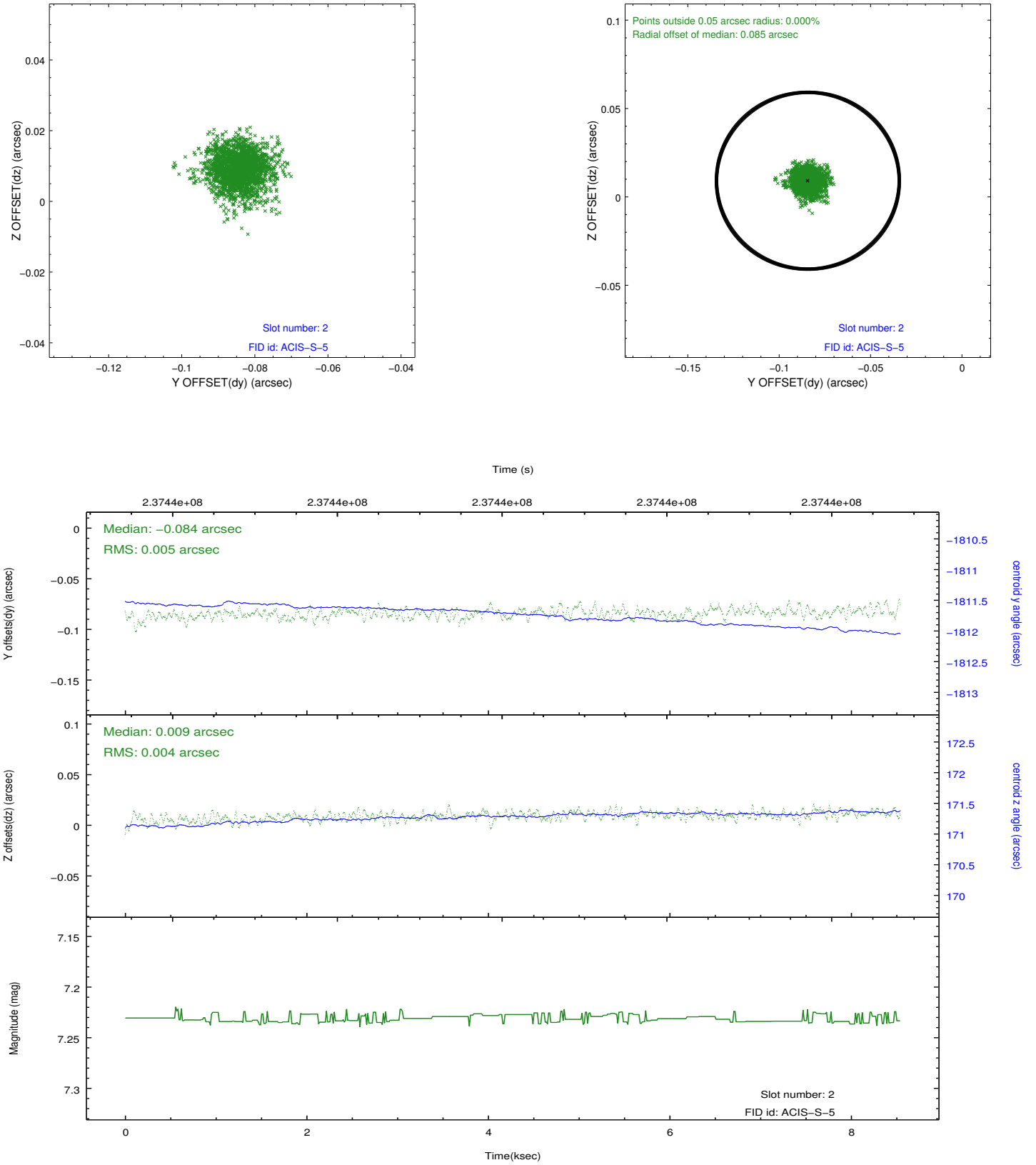
2.5.1 Slot 0



2.5.2 Slot 1



2.5.3 Slot 2



A Summary

A.1 Status

V&V Scientist	Jen Lauer
V&V Date (YYYY-MM-DD)	2013.01.25
V&V Edition	1
V&V Disposition and Status	OK
V&V Charge Time	8.537599

A.2 Comments

This is a moving target. Users will need to run `sso_freeze` or similar software to position the events in the reference frame of the target.