

# V&V Reference Report

## L2 ASCDS Version : 7.6.7.1

Observation 6338 - L2 Version 002  
Chandra X-Ray Center

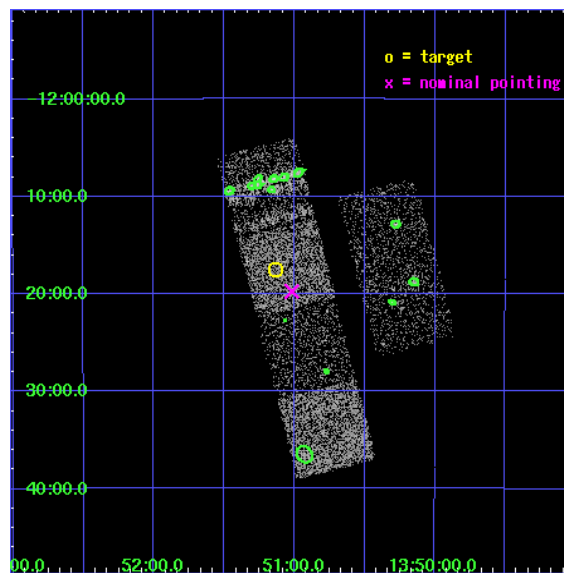
L2 Processing Date : Mar 14 2006

## Contents

<b>1</b>	<b>Front</b>	<b>2</b>
<b>2</b>	<b>OBI</b>	<b>3</b>
2.1	OBI . . . . .	3
2.1.1	Images . . . . .	3
2.1.2	Bias . . . . .	3
2.1.3	Parameters . . . . .	4
2.1.4	Events . . . . .	4
2.2	Compared Parameters . . . . .	5
2.3	Aspect . . . . .	6
2.4	Star Slots . . . . .	9
2.4.1	Slot 3 . . . . .	9
2.4.2	Slot 4 . . . . .	10
2.4.3	Slot 5 . . . . .	11
2.4.4	Slot 6 . . . . .	12
2.4.5	Slot 7 . . . . .	13
2.5	FID Slots . . . . .	14
2.5.1	Slot 0 . . . . .	14
2.5.2	Slot 1 . . . . .	15
2.5.3	Slot 2 . . . . .	16
<b>3</b>	<b>Point Sources</b>	<b>17</b>
<b>A</b>	<b>Summary</b>	<b>18</b>
A.1	Status . . . . .	18
A.2	Comments . . . . .	18

# 1 Front

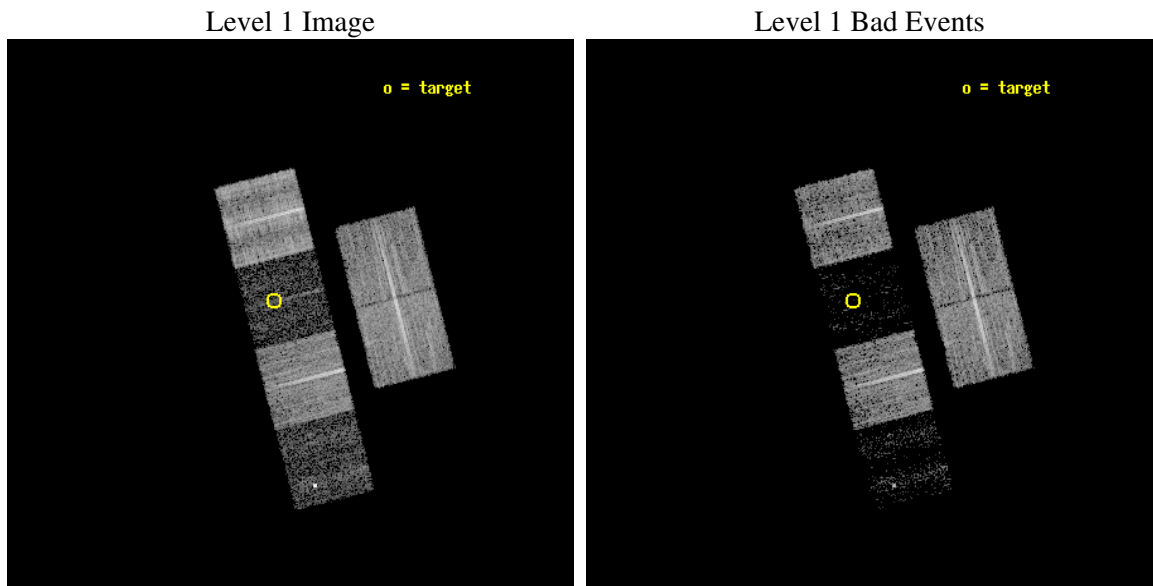
seq_num	100056
obs_id	6338
title	Comet 9P/Tempel 1 During the Deep Impact Encounter
observer	Dr. Carey Lisse
object	9P/Tempel 1
dtcycle	0
cycle	P
ra_targ	207.783554
dec_targ	-12.292218
ra_nom	207.7544697522
dec_nom	-12.329221190634
roll_nom	255.72040244798
revision	2
ontime	8537.599968195
livetime	8429.4917366722
ontime2	8537.599968195
ontime3	8537.599968195
ontime5	8537.599968195
ontime6	8537.599968195
ontime7	8537.599968195
ontime8	8537.599968195
l2events	14286



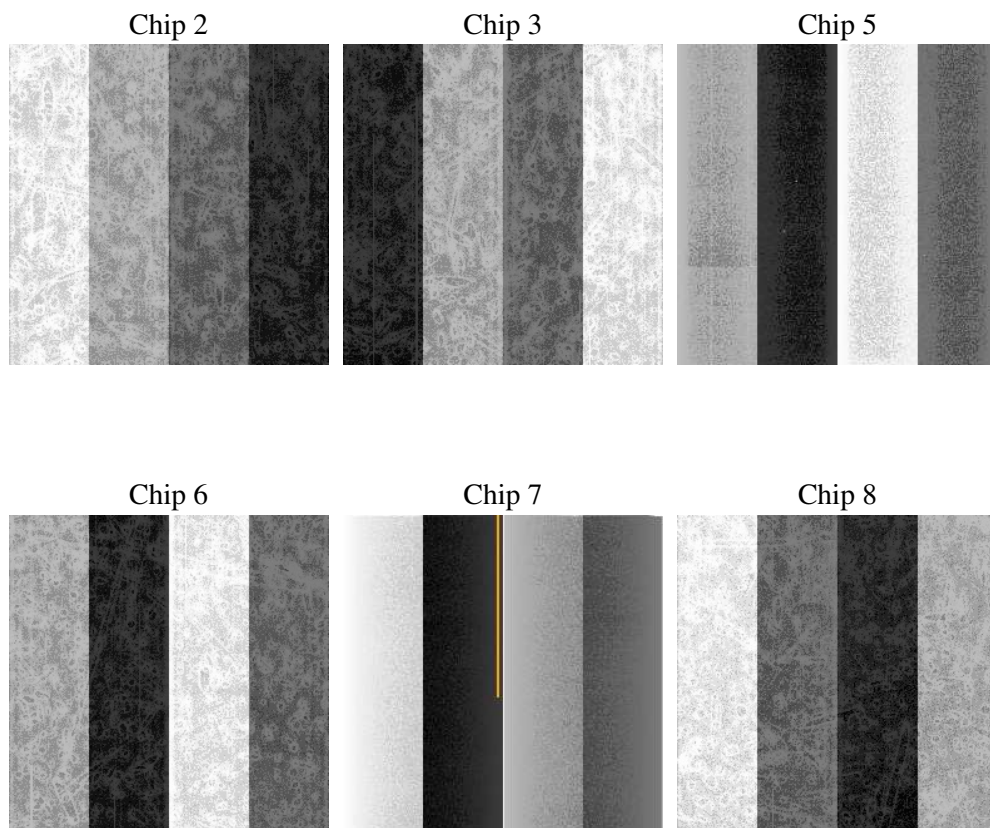
## 2 OBI

### 2.1 OBI

#### 2.1.1 Images



#### 2.1.2 Bias



### 2.1.3 Parameters

obi_num	0
ascdsver	7.6.7.1
caldsver	3.2.1
date	2006-03-14T14:27:58
revision	2

sched_exp_time	8350.000000
ontime	9123.4271971583
ontime2	9123.4271971583
ontime3	9123.4271971583
ontime5	9123.4271971583
ontime6	9123.4271672368
ontime7	9123.4271971583
ontime8	9123.4271971583
l1events	184109

### 2.1.4 Events

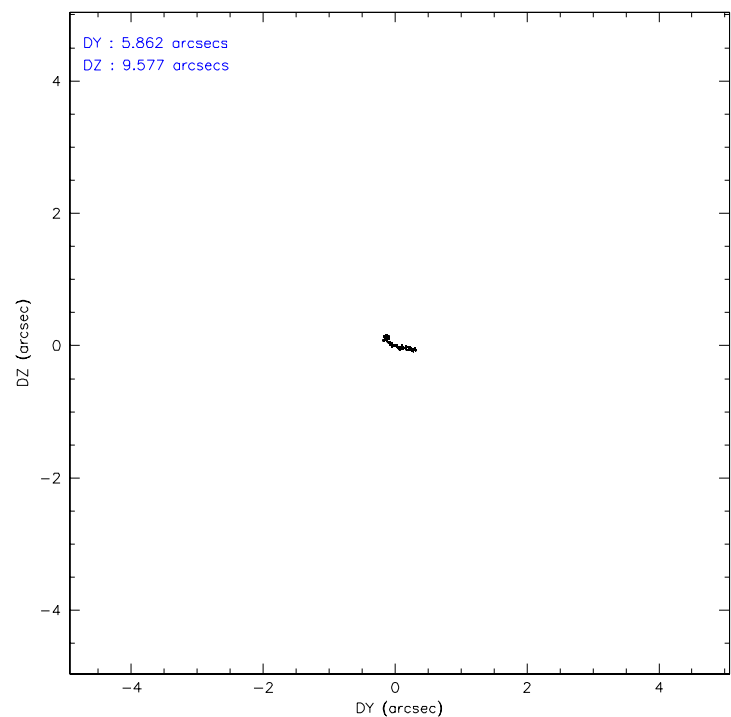
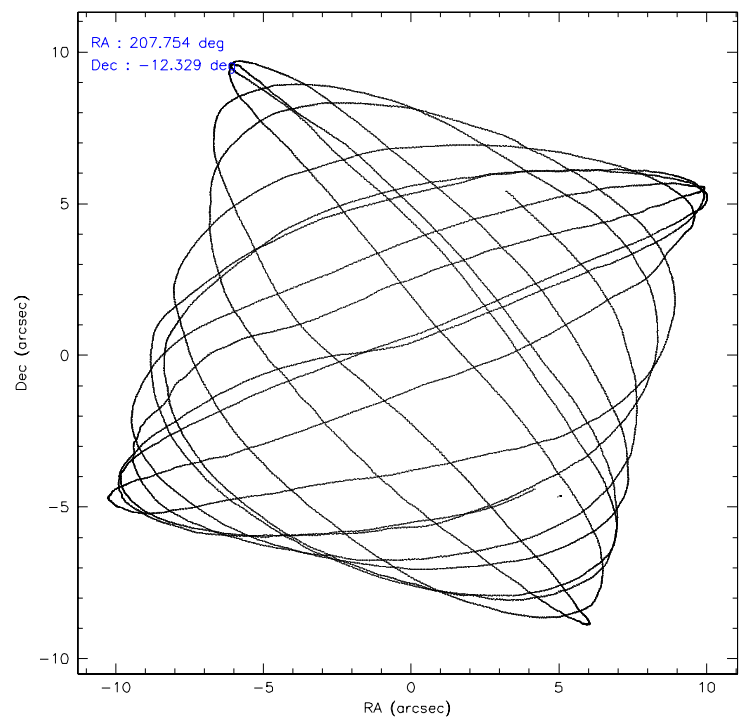
	ccd 2	ccd 3	ccd 5	ccd 6	ccd 7	ccd 8
level 1 events	44044	36796	8760	38096	5924	50489
rejected events	42090	35501	3265	36252	1615	33719
rejected %	95%	96%	37%	95%	27%	66%

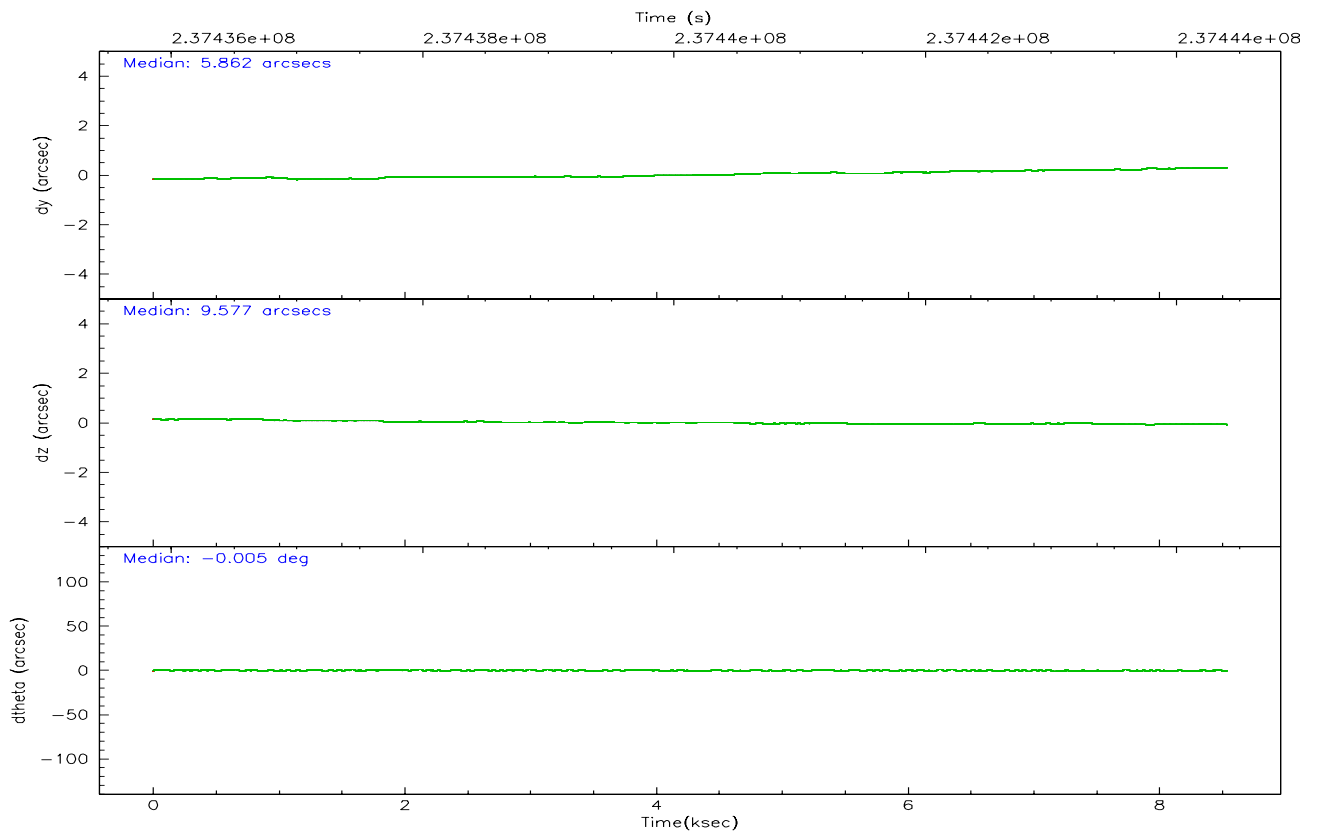
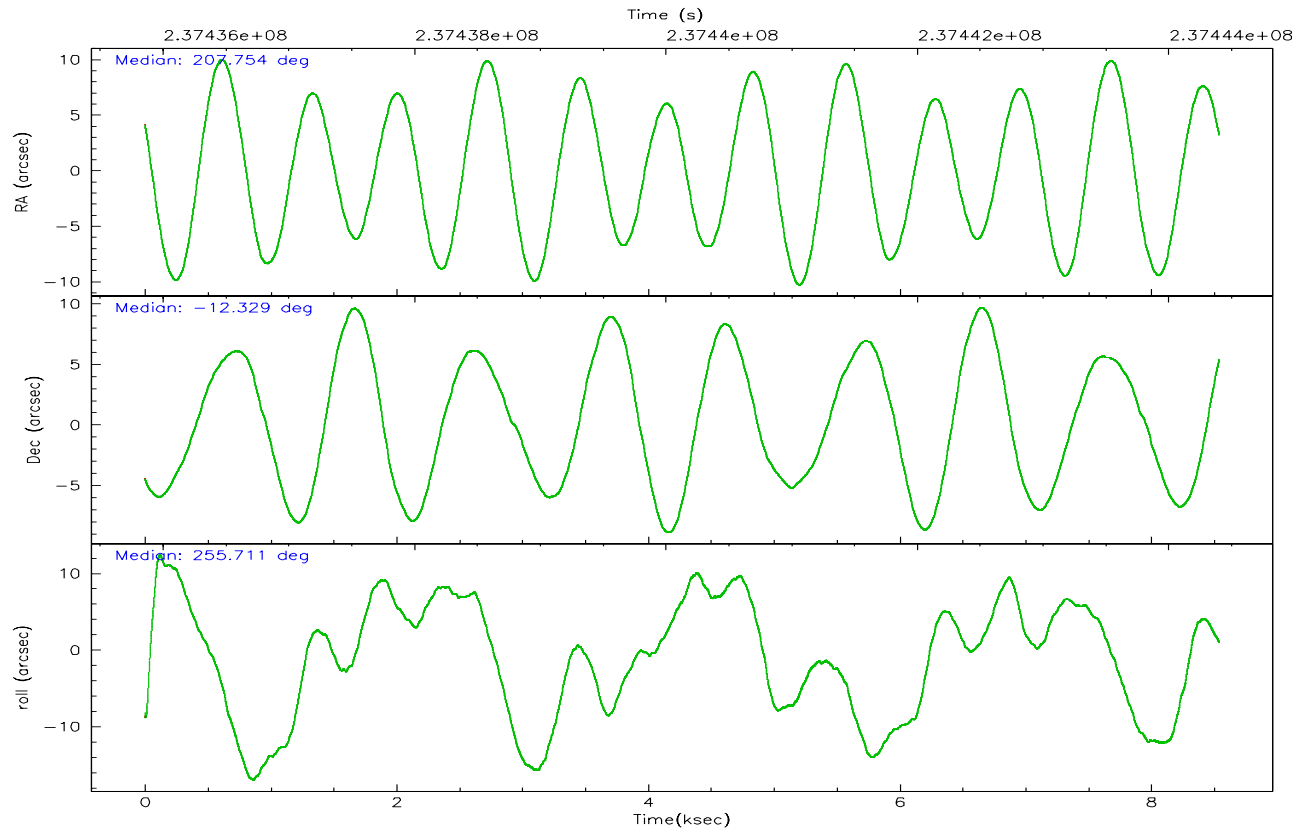
	ccd 2	ccd 3	ccd 5	ccd 6	ccd 7	ccd 8
grade 0 events	1005	648	1481	1040	1119	5857
	2%	1%	16%	2%	18%	11%
grade 1 events	14	6	13	11	25	51
	0%	0%	0%	0%	0%	0%
grade 2 events	447	179	1976	334	1660	2950
	1%	0%	22%	0%	28%	5%
grade 3 events	197	227	1131	250	634	2772
	0%	0%	12%	0%	10%	5%
grade 4 events	289	187	628	222	606	2506
	0%	0%	7%	0%	10%	4%
grade 5 events	64	25	403	28	189	293
	0%	0%	4%	0%	3%	0%
grade 6 events	158	118	638	107	581	3705
	0%	0%	7%	0%	9%	7%
grade 7 events	41870	35406	2490	36104	1110	32355
	95%	96%	28%	94%	18%	64%

## 2.2 Compared Parameters

Parameter	Planned	Actual	Parameter	Planned	Actual
Instrument	ACIS	ACIS	Obspar format version number	6	6
Detector	ACIS-235678	ACIS-235678	Obspar file type	PREDICTED	ACTUAL
Grating	NONE	NONE	Obspar update status	NONE	UPDATED
Data mode	VFAINT	VFAINT	On-chip summing requested	N	N
Observation mode	POINTING	POINTING	Subarray requested	NONE	NONE
Pointing RA	207.746548	207.7544697521973	Alternating exposures requested	N	N
Pointing Dec	-12.303064	-12.32922119063415	Primary exposure time	0.000000	3.2
Pointing Roll	255.562108	255.7204024479758			
SIM focus pos (mm)	-0.684267	-0.6828225247311905			
SIM defocus (mm)	0	0.001444936568705701			
SIM translation stage pos (mm)	-190.132523	-190.1400660498719			
SIM translation stage offset (mm)	0	0.00754346686406393			
Observation start time	237436043.184000	237435536.72436			
Observation start date	2005-07-11T02:26:19	2005-07-11T02:18:56			
Observation end time	237444393.184000	237444658.19978			
Observation end date	2005-07-11T04:45:29	2005-07-11T04:50:58			
Read mode	TIMED	TIMED			

### 2.3 Aspect





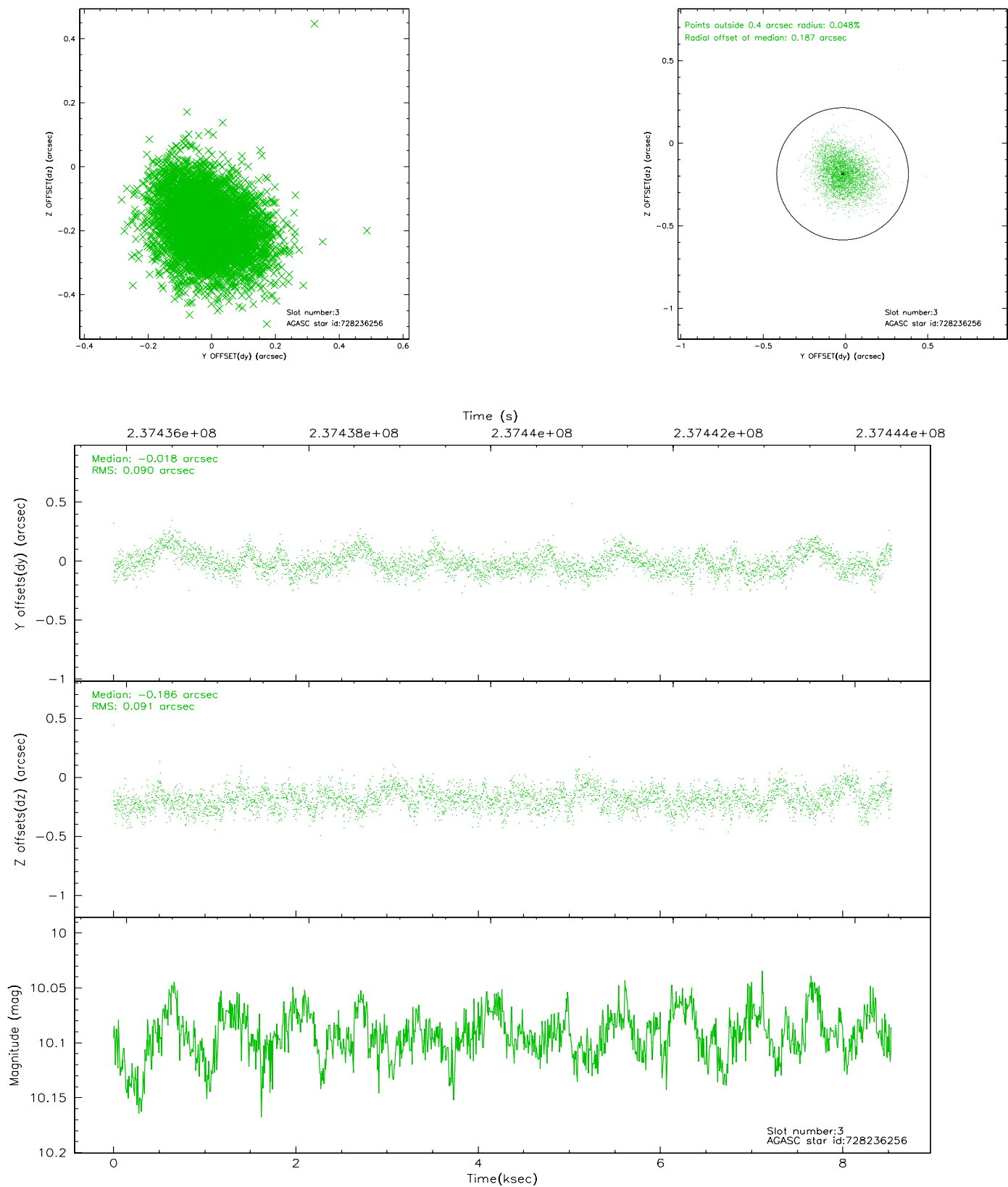
### Slot Statistics

slot	status	id	mag	n_pts	med_dy	med_dz	dr1	dr2	ra	dec	mean_y	mean_z
0	FID	ACIS-S-2	7.10	2084	-0.059	-0.023	0.007	0.011	0.000000	0.000000	-758.65	-1730.86
1	FID	ACIS-S-4	7.21	2084	0.082	0.035	0.006	0.011	0.000000	0.000000	2154.45	177.05
2	FID	ACIS-S-5	7.23	2084	-0.054	-0.002	0.006	0.011	0.000000	0.000000	-1810.68	171.37
3	GUIDE	728236256	10.09	4160	-0.018	-0.186	0.135	0.219	207.126175	-12.399367	882.52	-2024.99
4	GUIDE	728243160	10.07	4126	-0.126	0.009	0.163	0.270	208.309960	-11.797392	-2256.08	1468.93
5	GUIDE	728246264	10.51	4163	0.008	-0.008	0.304	0.443	207.655266	-11.635836	-2246.13	-910.32
6	GUIDE	728632856	10.57	4135	0.095	0.118	0.206	0.328	208.274834	-12.910844	1657.87	2341.78
7	GUIDE	728633928	10.35	4160	0.027	0.065	0.277	0.424	208.253445	-12.706055	962.98	2087.24

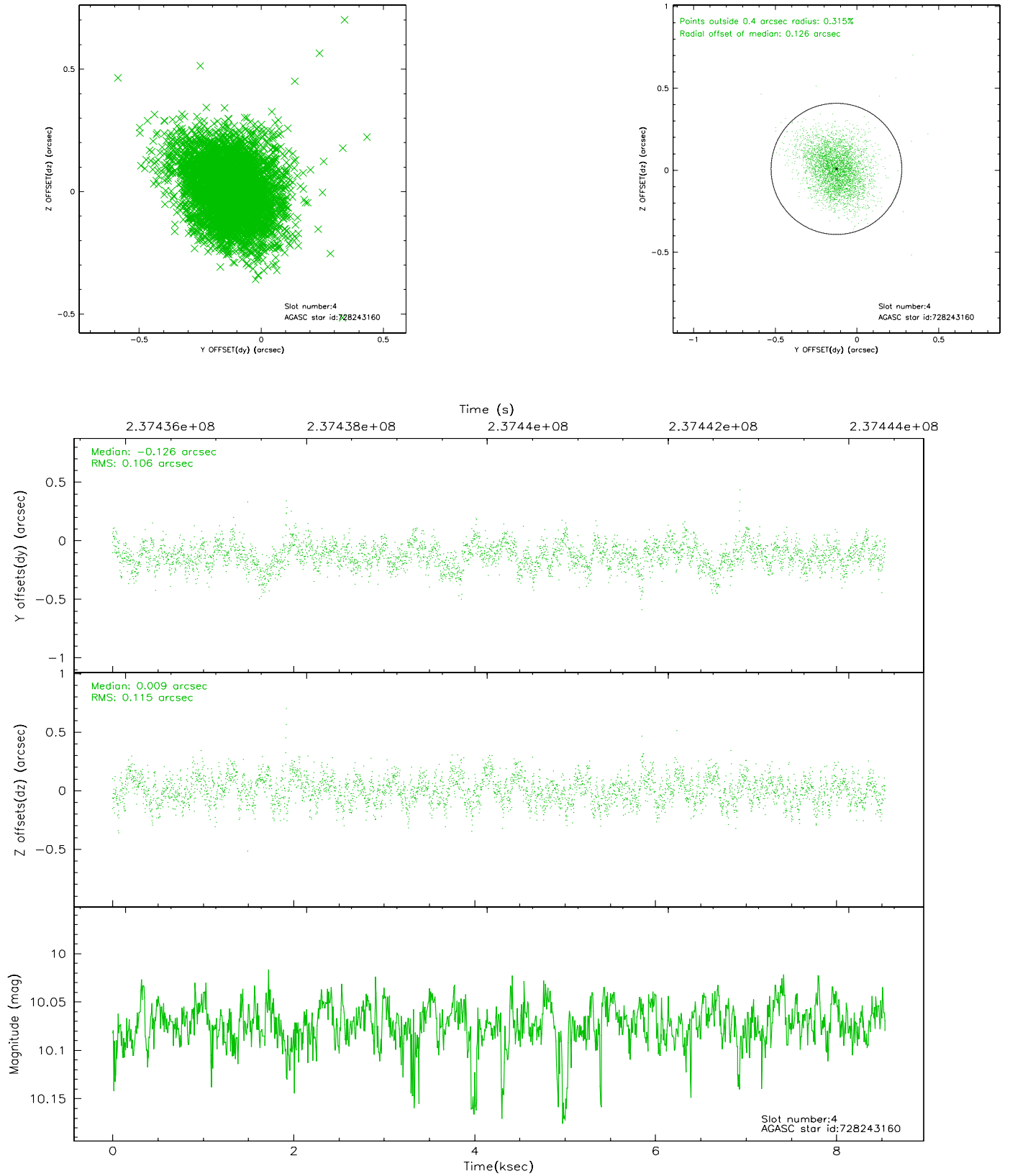


## 2.4 Star Slots

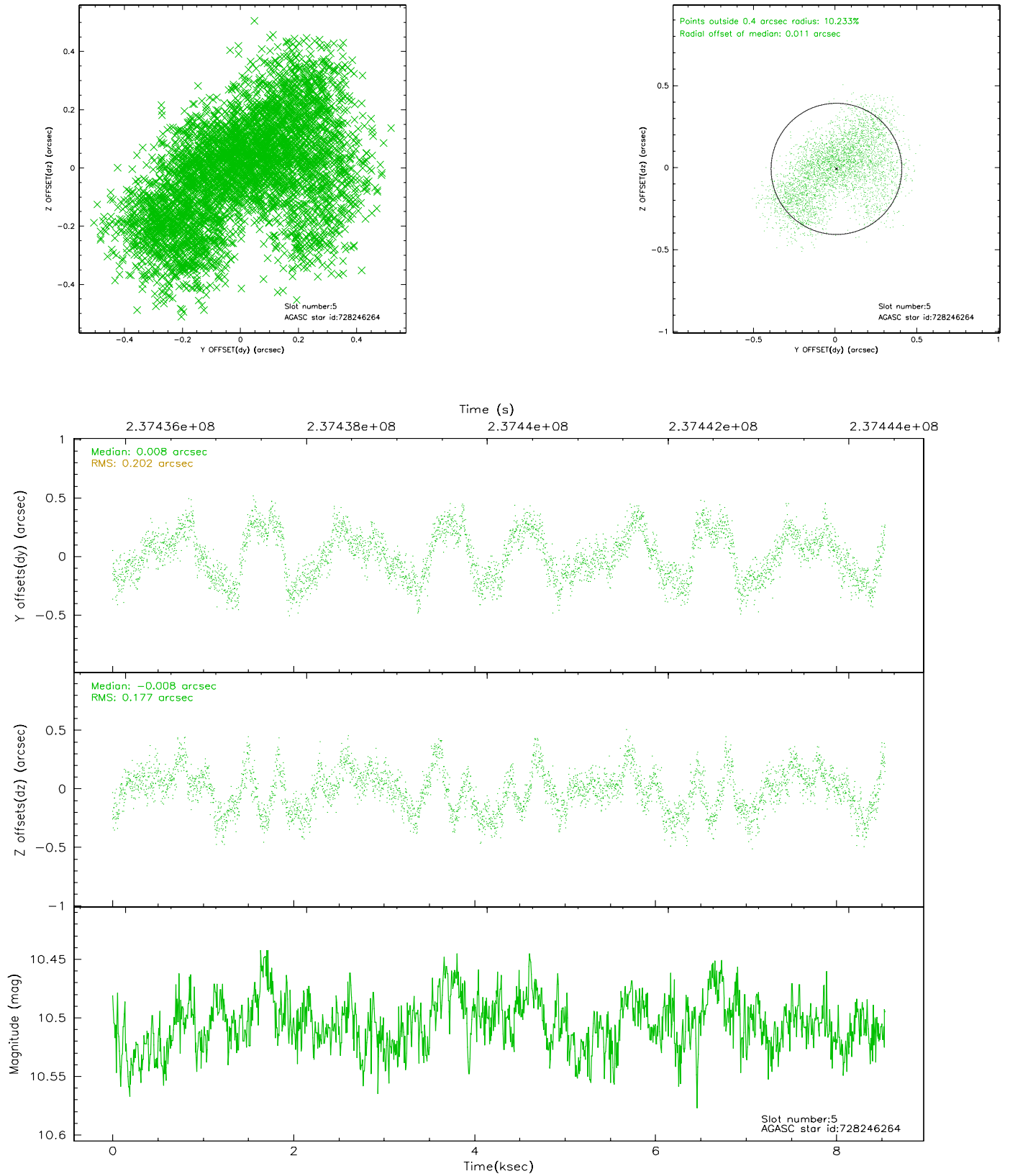
### 2.4.1 Slot 3



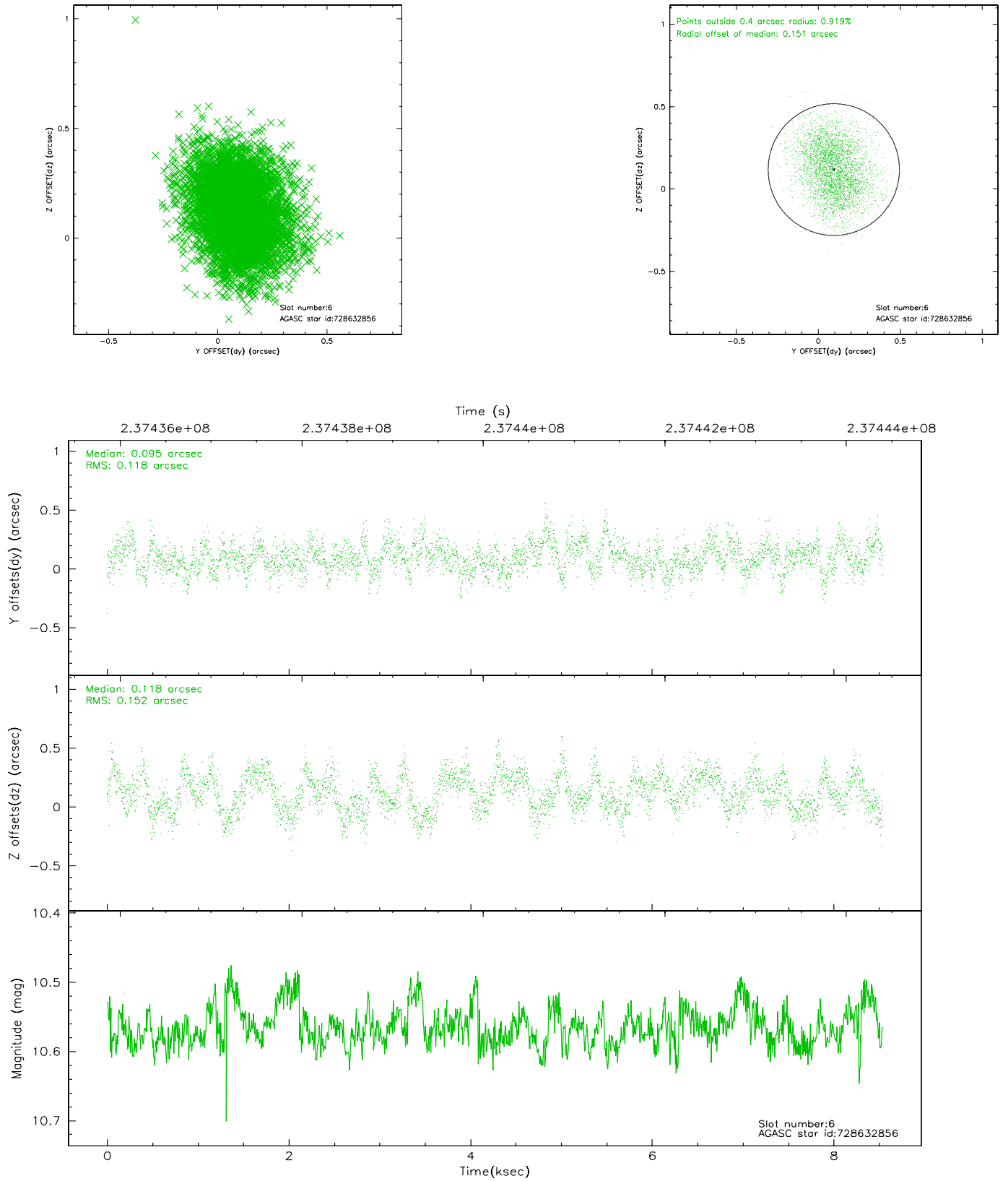
## 2.4.2 Slot 4



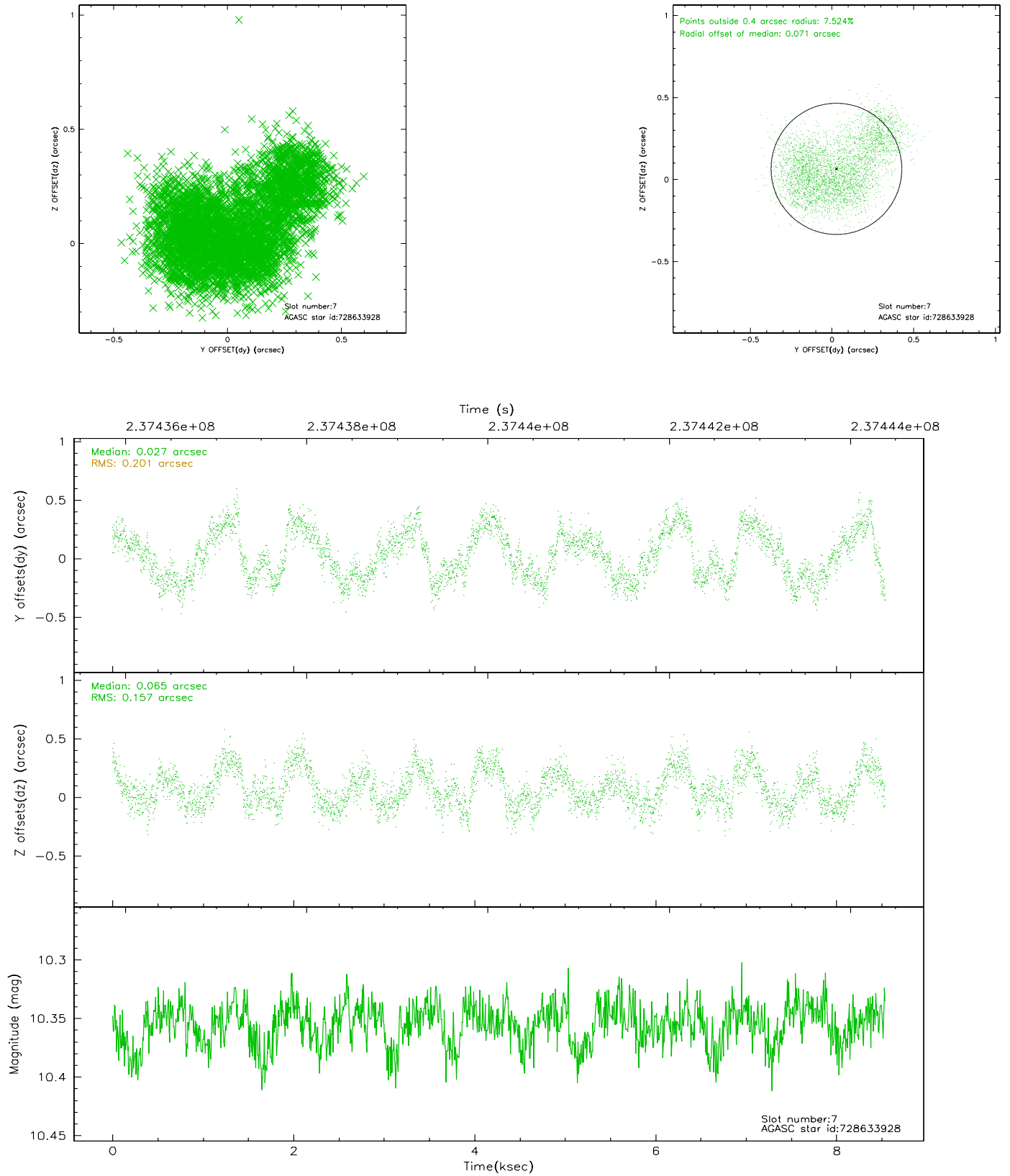
### 2.4.3 Slot 5



## 2.4.4 Slot 6

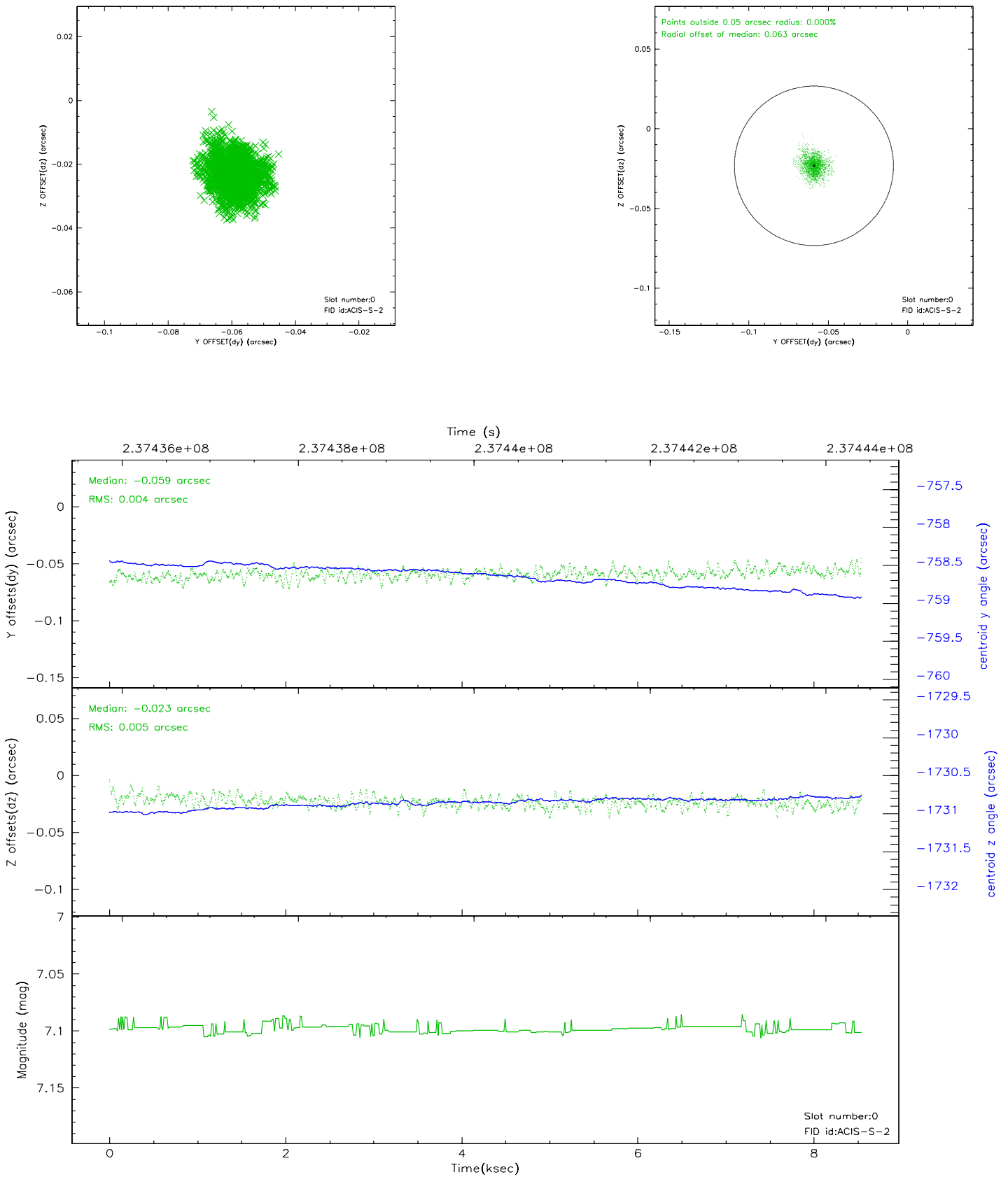


## 2.4.5 Slot 7

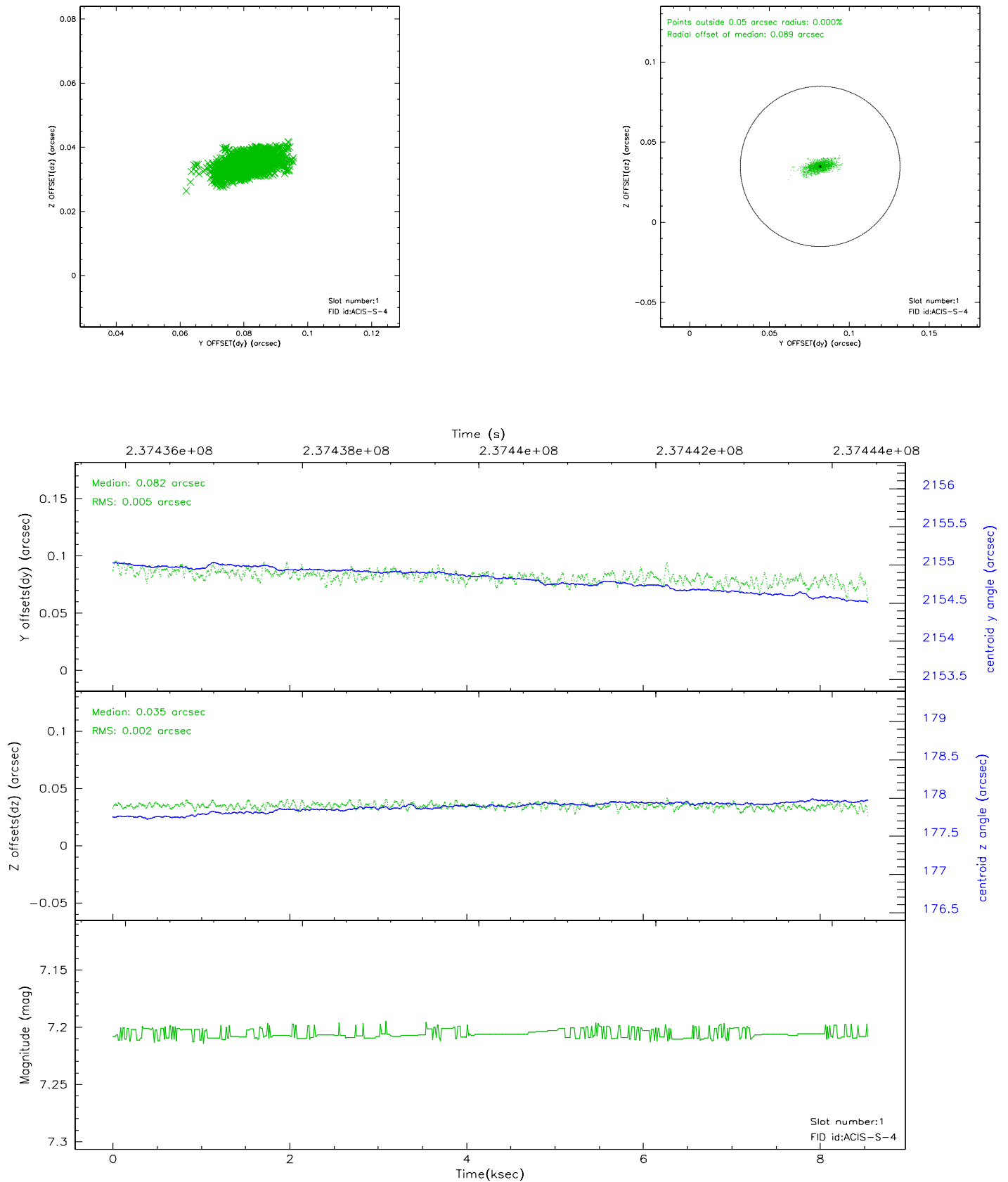


## 2.5 FID Slots

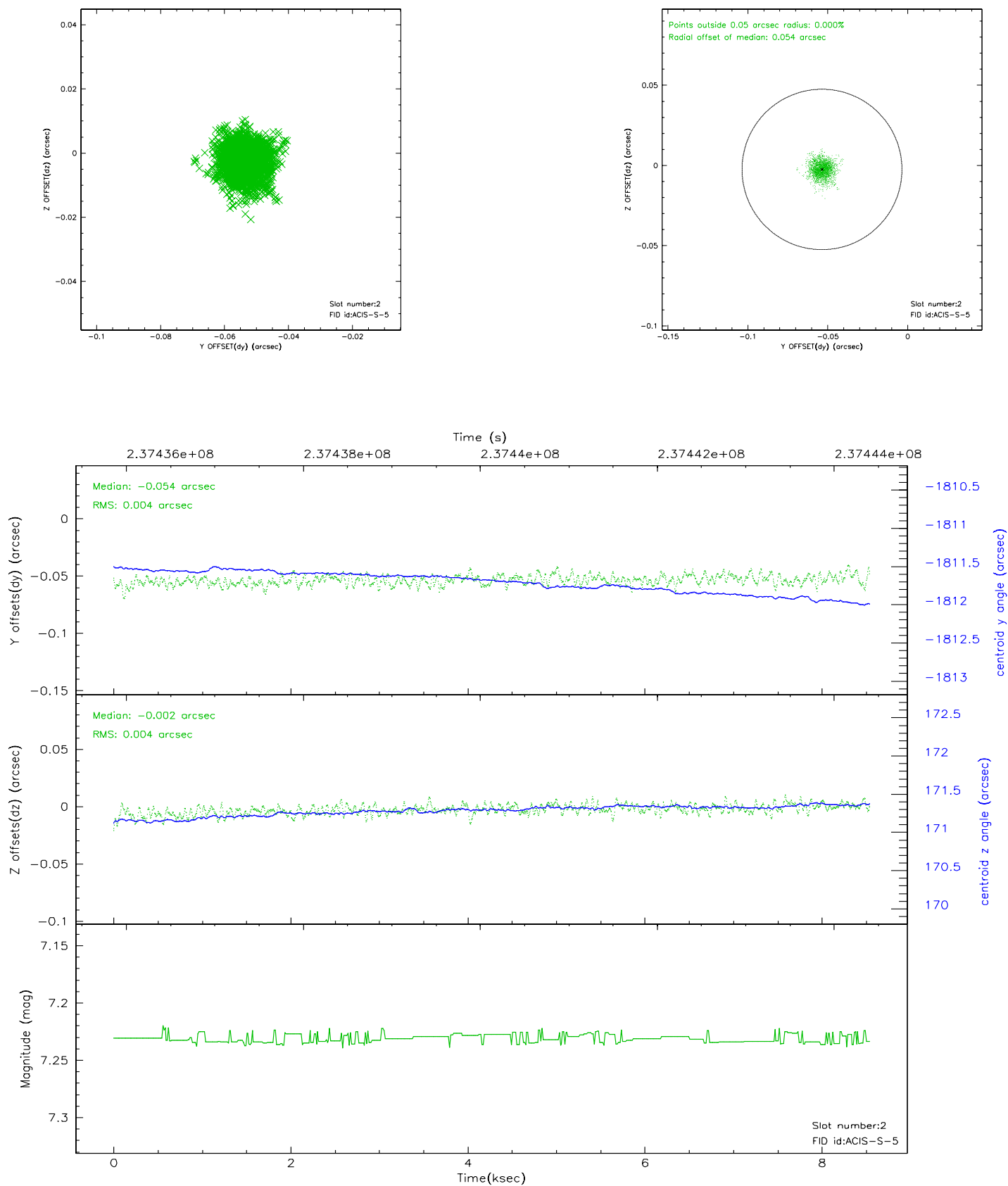
### 2.5.1 Slot 0



## 2.5.2 Slot 1

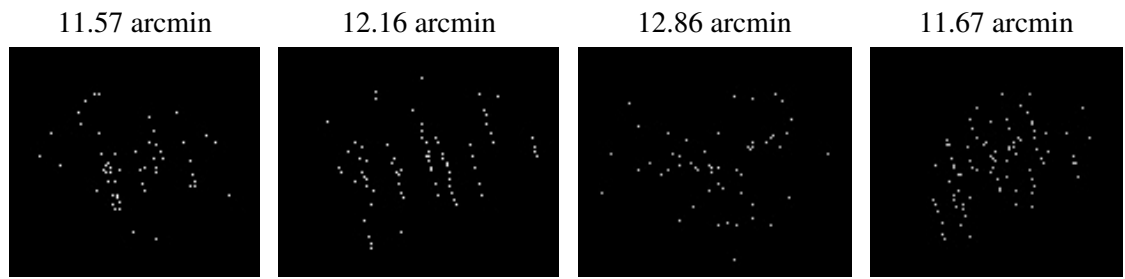


### 2.5.3 Slot 2





### 3 Point Sources



# A Summary

## A.1 Status

V&V Scientist	Beth Sundheim
V&V Date (YYYY-MM-DD)	2006.03.14
V&V Edition	1
V&V Disposition and Status	OK
V&V Charge Time	8.537599

## A.2 Comments

Comments for Obi 0

Star in slot 5 has an RMS deviation > 0.200000 arcsec

Star in slot 7 has an RMS deviation > 0.200000 arcsec

(but are within spec)