

V&V Reference Report

L2 ASCDS Version : 7.6.7.1

Observation 6333 - L2 Version 002
Chandra X-Ray Center

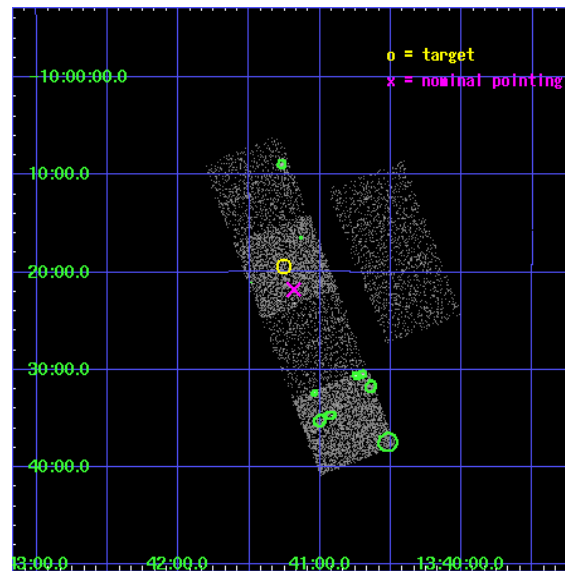
L2 Processing Date : Mar 14 2006

Contents

1	Front	2
2	OBI	3
2.1	OBI	3
2.1.1	Images	3
2.1.2	Bias	3
2.1.3	Parameters	4
2.1.4	Events	4
2.2	Compared Parameters	5
2.3	Aspect	6
2.4	Star Slots	9
2.4.1	Slot 3	9
2.4.2	Slot 4	10
2.4.3	Slot 5	11
2.4.4	Slot 6	12
2.4.5	Slot 7	13
2.5	FID Slots	14
2.5.1	Slot 0	14
2.5.2	Slot 1	15
2.5.3	Slot 2	16
3	Point Sources	17
A	Summary	18
A.1	Status	18
A.2	Comments	18

1 Front

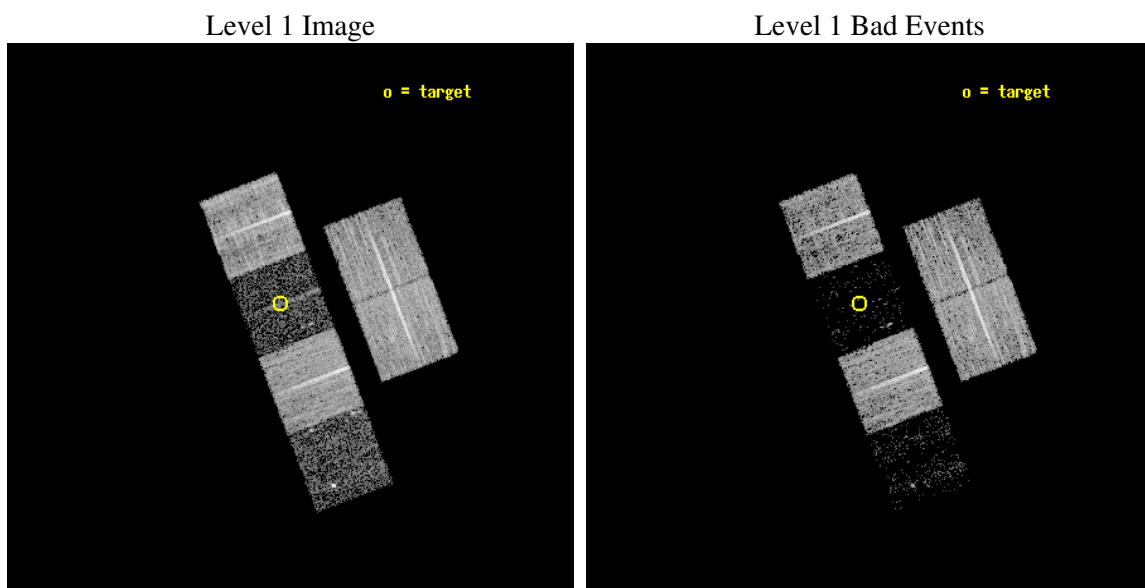
seq_num	100055
obs_id	6333
title	Comet 9P/Tempel 1 During the Deep Impact Encounter
observer	Dr. Carey Lisse
object	9P/Tempel 1
dtcycle	0
cycle	P
ra_targ	205.313443
dec_targ	-10.323565
ra_nom	205.29617349325
dec_nom	-10.362958460364
roll_nom	249.07752582691
revision	2
ontime	8086.3999698758
livetime	7984.0051044117
ontime2	8086.3999698758
ontime3	8086.3999698758
ontime5	8086.3999698758
ontime6	8086.3999698758
ontime7	8086.3999698758
ontime8	8086.3999698758
l2events	11497



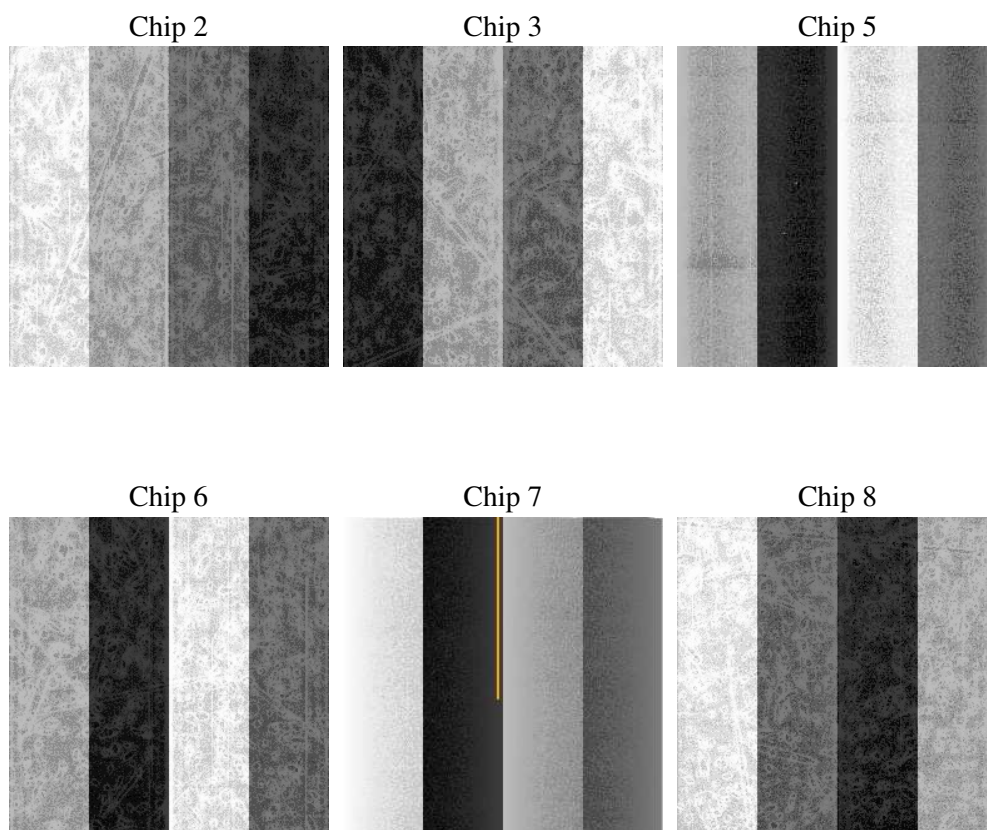
2 OBI

2.1 OBI

2.1.1 Images



2.1.2 Bias



2.1.3 Parameters

obi_num	0
ascdsver	7.6.7.1
caldbver	3.2.1
date	2006-03-14T09:19:28
revision	2

sched_exp_time	7900.000000
ontime	8410.4023744762
ontime2	8407.1613344848
ontime3	8410.4023545682
ontime5	8410.4023545682
ontime6	8410.4023445845
ontime7	8410.4023744762
ontime8	8410.4023545682
l1events	171027

2.1.4 Events

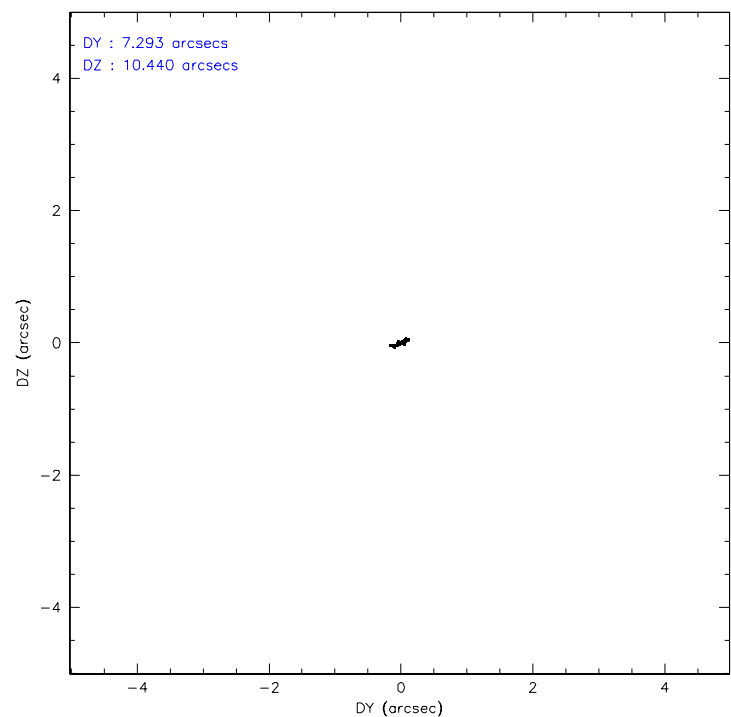
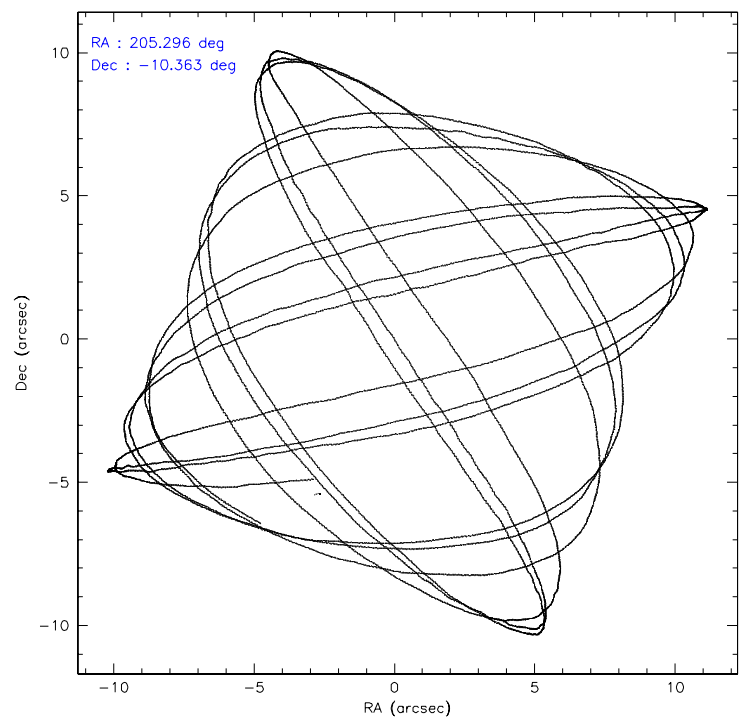
	ccd 2	ccd 3	ccd 5	ccd 6	ccd 7	ccd 8
level 1 events	43181	35995	7155	38742	5187	40767
rejected events	41452	34802	2304	37076	1328	30697
rejected %	95%	96%	32%	95%	25%	75%

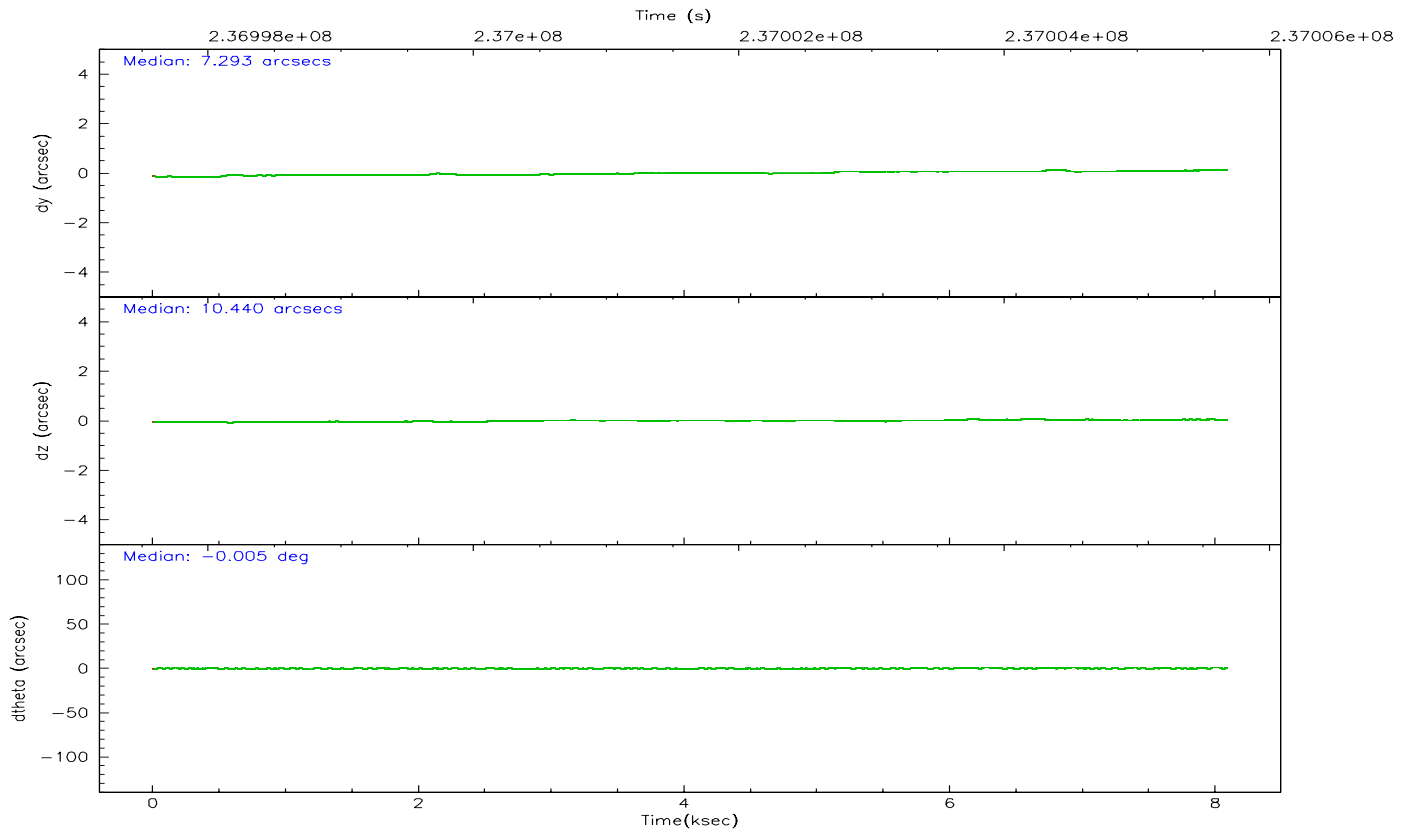
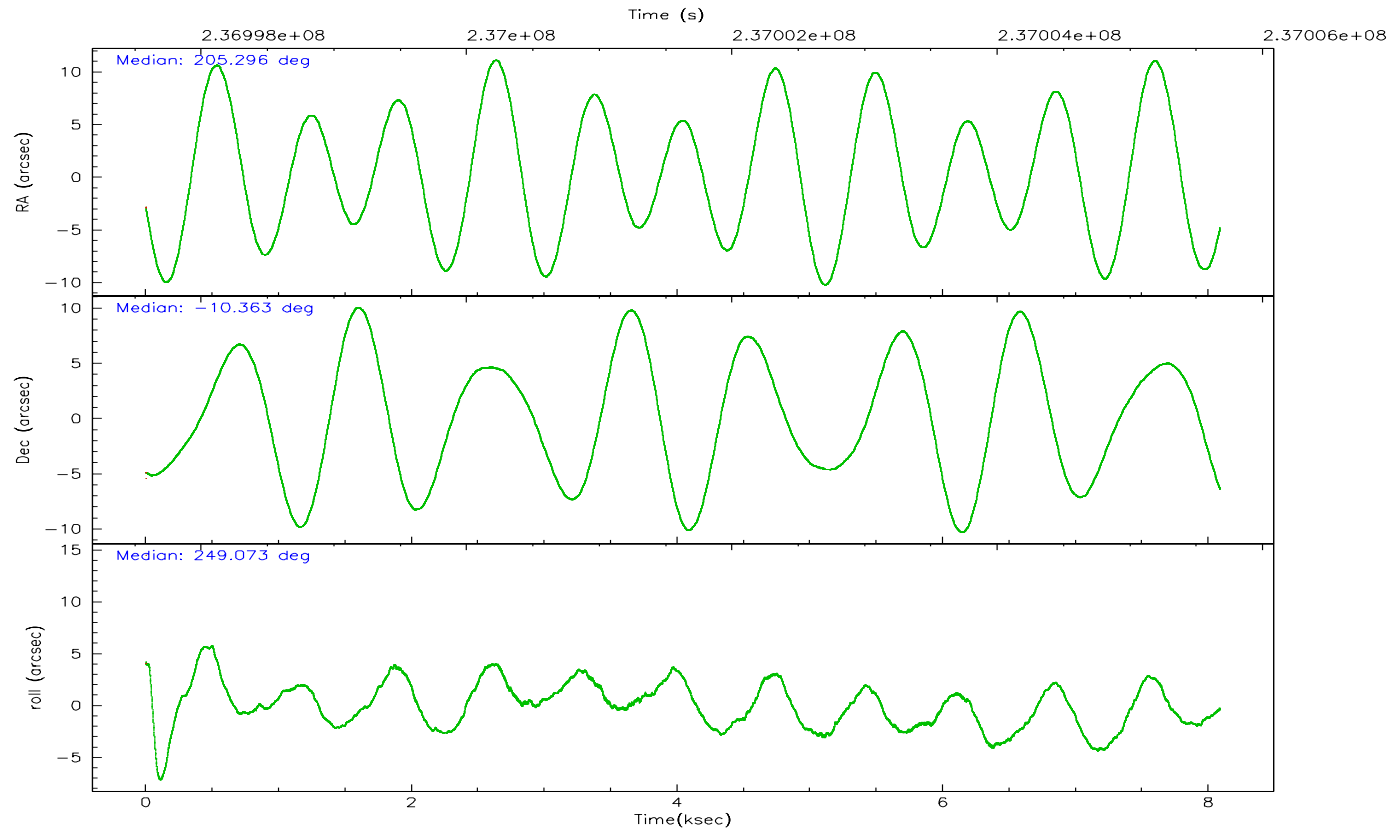
	ccd 2	ccd 3	ccd 5	ccd 6	ccd 7	ccd 8
grade 0 events	689	560	1298	787	957	2888
	1%	1%	18%	2%	18%	7%
grade 1 events	6	10	90	13	19	19
	0%	0%	1%	0%	0%	0%
grade 2 events	442	151	2098	324	1423	2248
	1%	0%	29%	0%	27%	5%
grade 3 events	232	221	541	233	567	1242
	0%	0%	7%	0%	10%	3%
grade 4 events	290	191	514	258	543	1181
	0%	0%	7%	0%	10%	2%
grade 5 events	48	46	335	30	118	197
	0%	0%	4%	0%	2%	0%
grade 6 events	148	115	616	127	526	2839
	0%	0%	8%	0%	10%	6%
grade 7 events	41326	34701	1663	36970	1034	30153
	95%	96%	23%	95%	19%	73%

2.2 Compared Parameters

Parameter	Planned	Actual	Parameter	Planned	Actual
Instrument	ACIS	ACIS	Obspar format version number	6	6
Detector	ACIS-235678	ACIS-235678	Obspar file type	PREDICTED	ACTUAL
Grating	NONE	NONE	Obspar update status	NONE	UPDATED
Data mode	VFAINT	VFAINT	On-chip summing requested	N	N
Observation mode	POINTING	POINTING	Subarray requested	NONE	NONE
Pointing RA	205.291479	205.296173493251	Alternating exposures requested	N	N
Pointing Dec	-10.336143	-10.36295846036413	Primary exposure time	0.000000	3.2
Pointing Roll	248.920054	249.0775258269126			
Window start time	236966464.184000	236966464.184000			
Window stop time	237031264.184000	237031264.184000			
SIM focus pos (mm)	-0.684267	-0.6828225247311905			
SIM defocus (mm)	0	0.001444936568705701			
SIM translation stage pos (mm)	-190.132523	-190.1400660498719			
SIM translation stage offset (mm)	0	0.00754346686406393			
Observation start time	236997776.184000	236997400.45432			
Observation start date	2005-07-06T00:41:52	2005-07-06T00:36:40			
Observation end time	237005676.184000	237005810.06721			
Observation end date	2005-07-06T02:53:32	2005-07-06T02:56:50			
Read mode	TIMED	TIMED			

2.3 Aspect



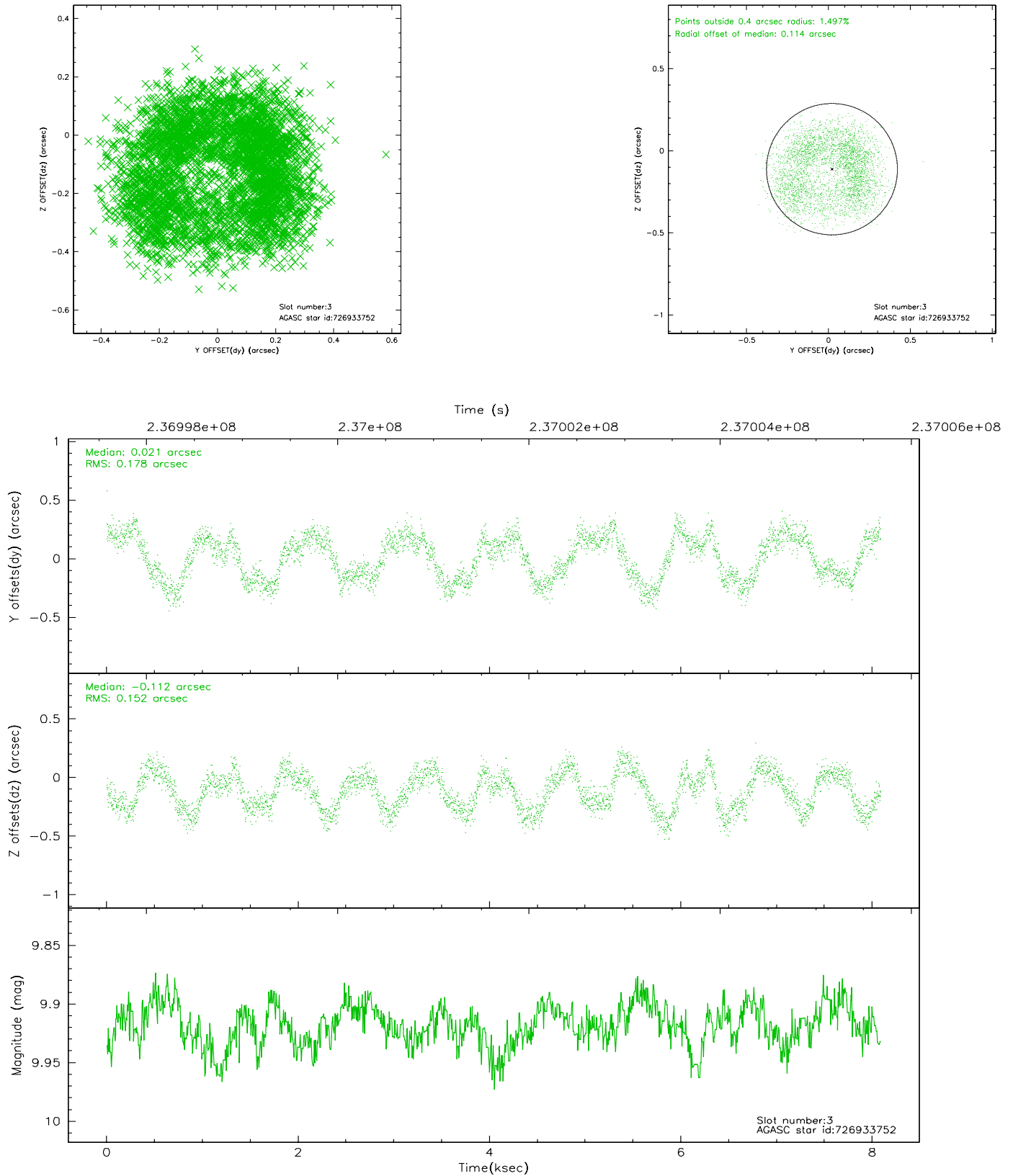


Slot Statistics

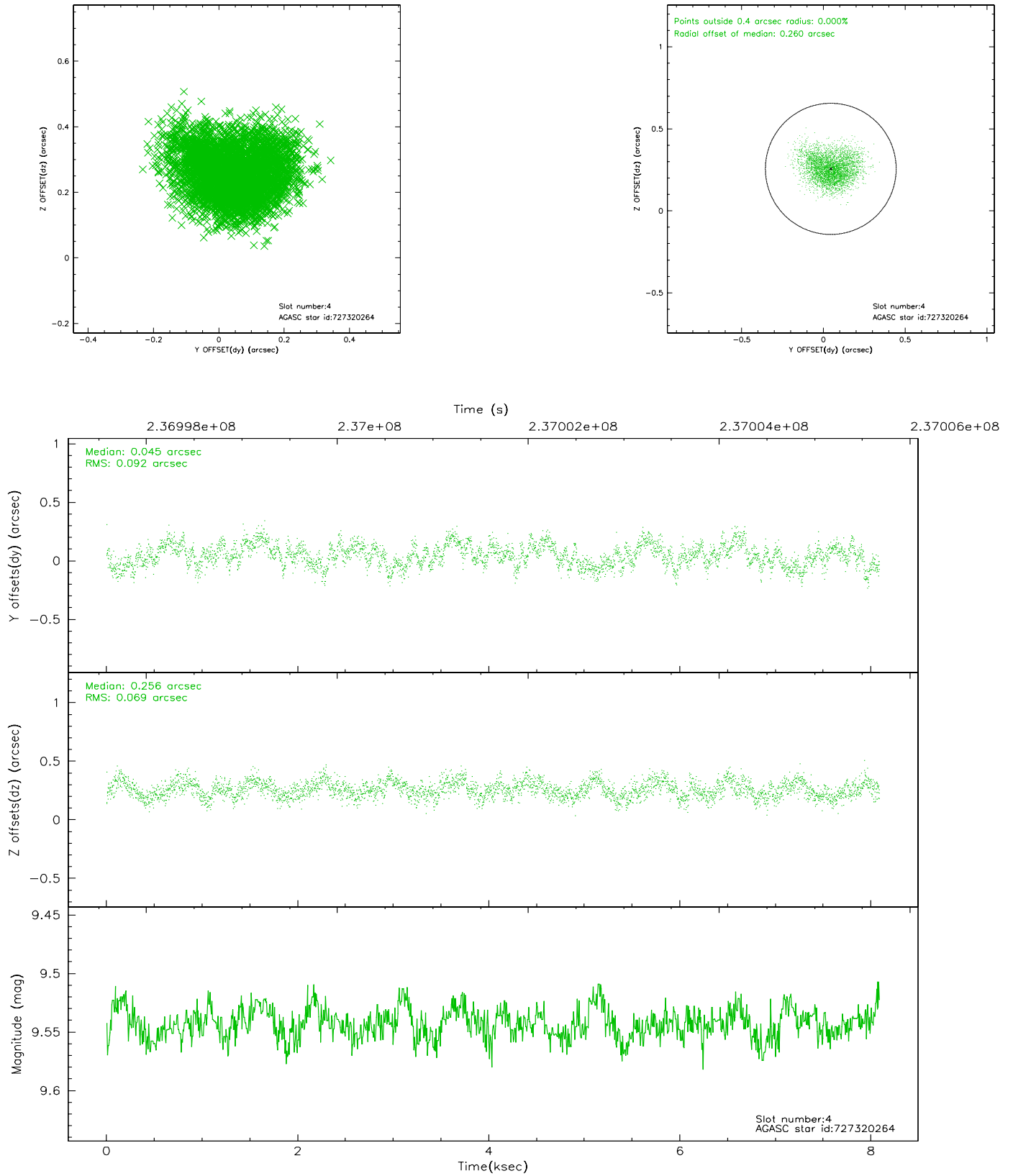
slot	status	id	mag	n_pts	med_dy	med_dz	dr1	dr2	ra	dec	mean_y	mean_z
0	FID	ACIS-S-2	7.10	1973	-0.045	-0.001	0.011	0.022	0.000000	0.000000	-760.05	-1731.71
1	FID	ACIS-S-4	7.20	1973	0.071	0.022	0.012	0.029	0.000000	0.000000	2152.98	176.14
2	FID	ACIS-S-5	7.23	1973	-0.055	-0.013	0.009	0.016	0.000000	0.000000	-1812.05	170.47
3	GUIDE	726933752	9.92	3941	0.021	-0.112	0.257	0.358	205.376260	-9.946078	-1418.13	-224.74
4	GUIDE	727320264	9.54	3944	0.045	0.256	0.125	0.198	205.464326	-10.871323	1577.93	1263.67
5	GUIDE	727320968	9.33	3940	-0.239	0.205	0.112	0.178	205.790359	-10.593418	230.78	1981.42
6	GUIDE	727321088	9.45	3943	0.296	-0.619	0.104	0.164	204.964296	-10.686432	1594.11	-626.20
7	GUIDE	727321928	10.09	3941	-0.112	0.275	0.133	0.213	205.258401	-10.105722	-731.31	-407.66

2.4 Star Slots

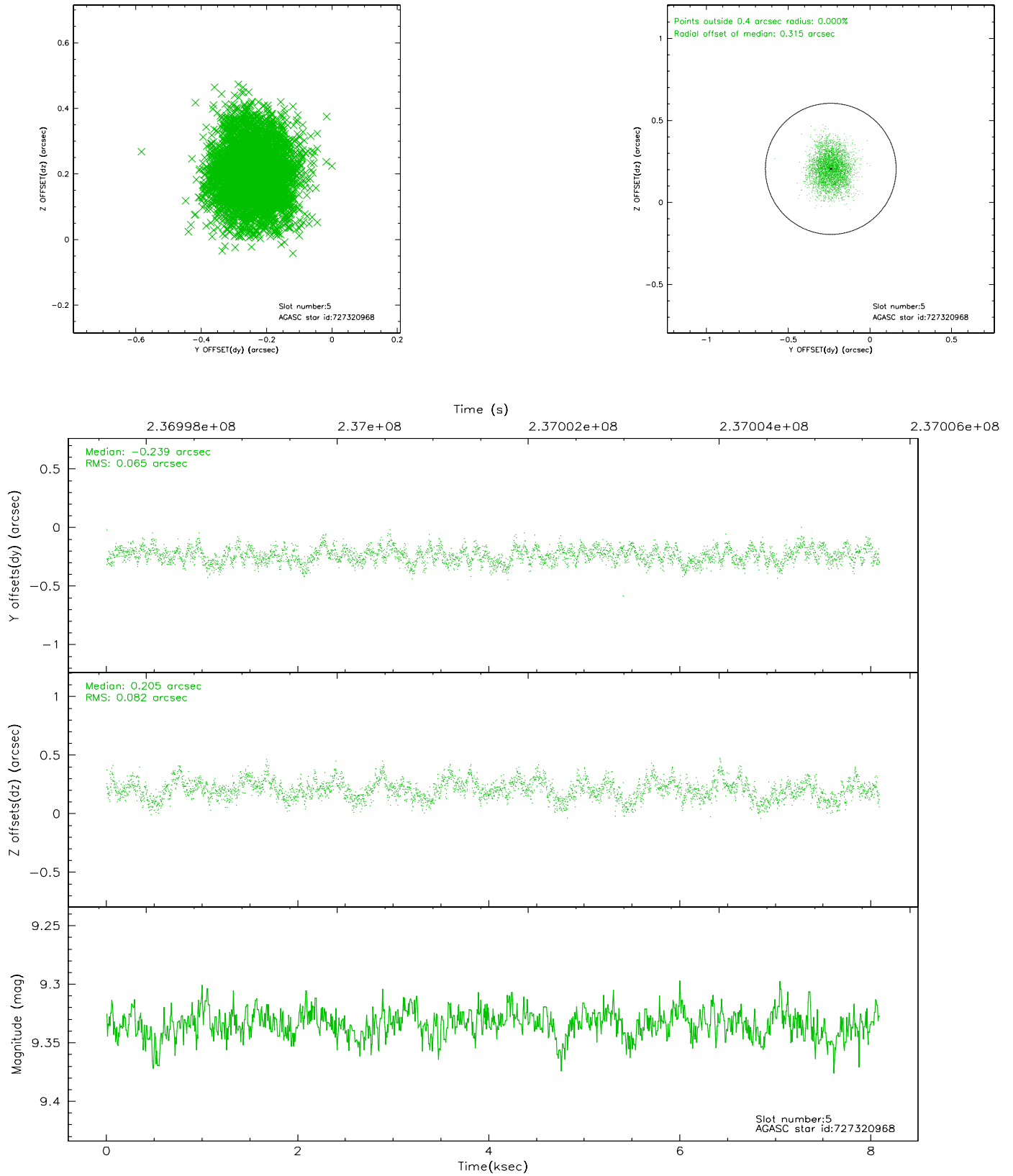
2.4.1 Slot 3



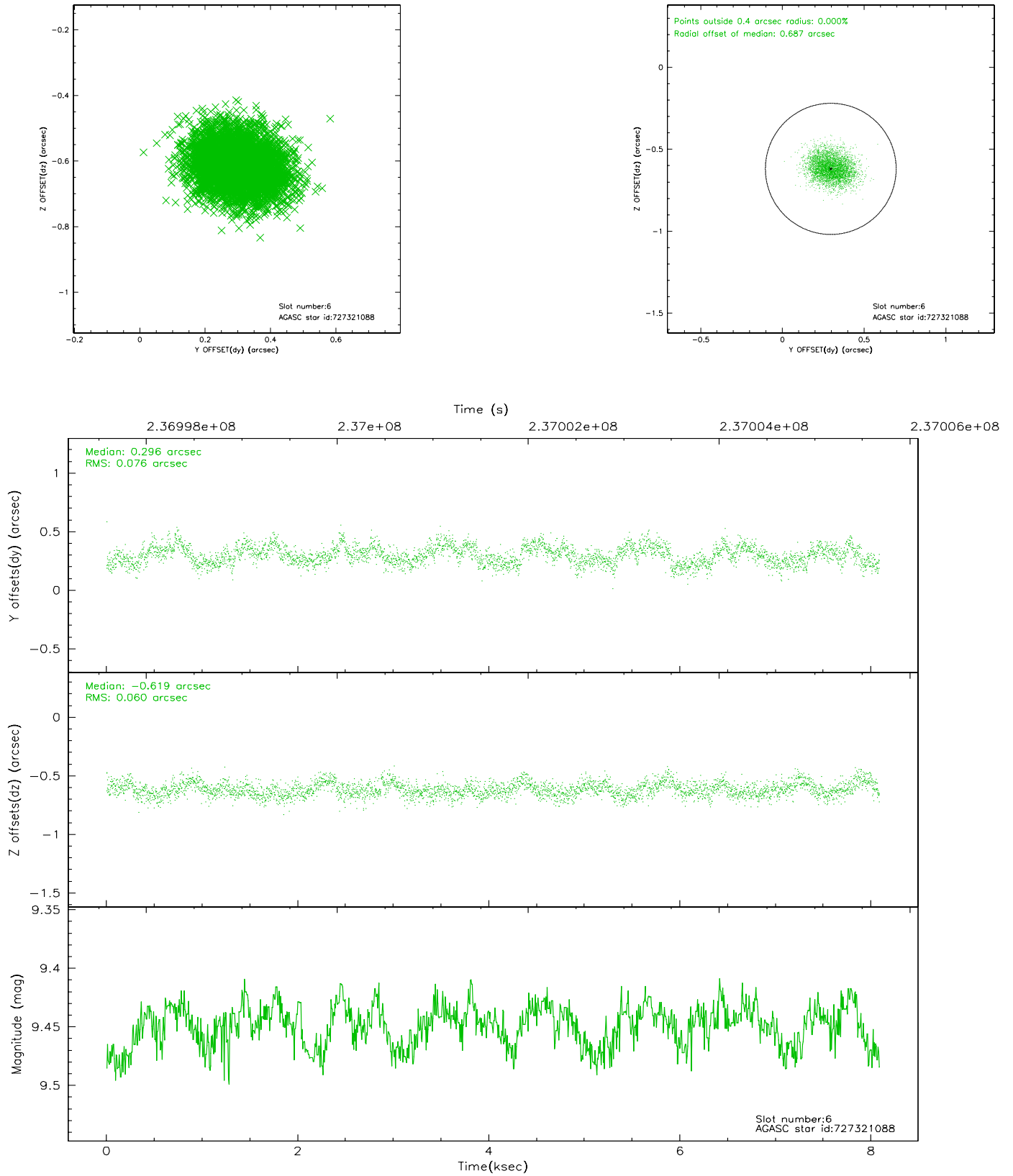
2.4.2 Slot 4



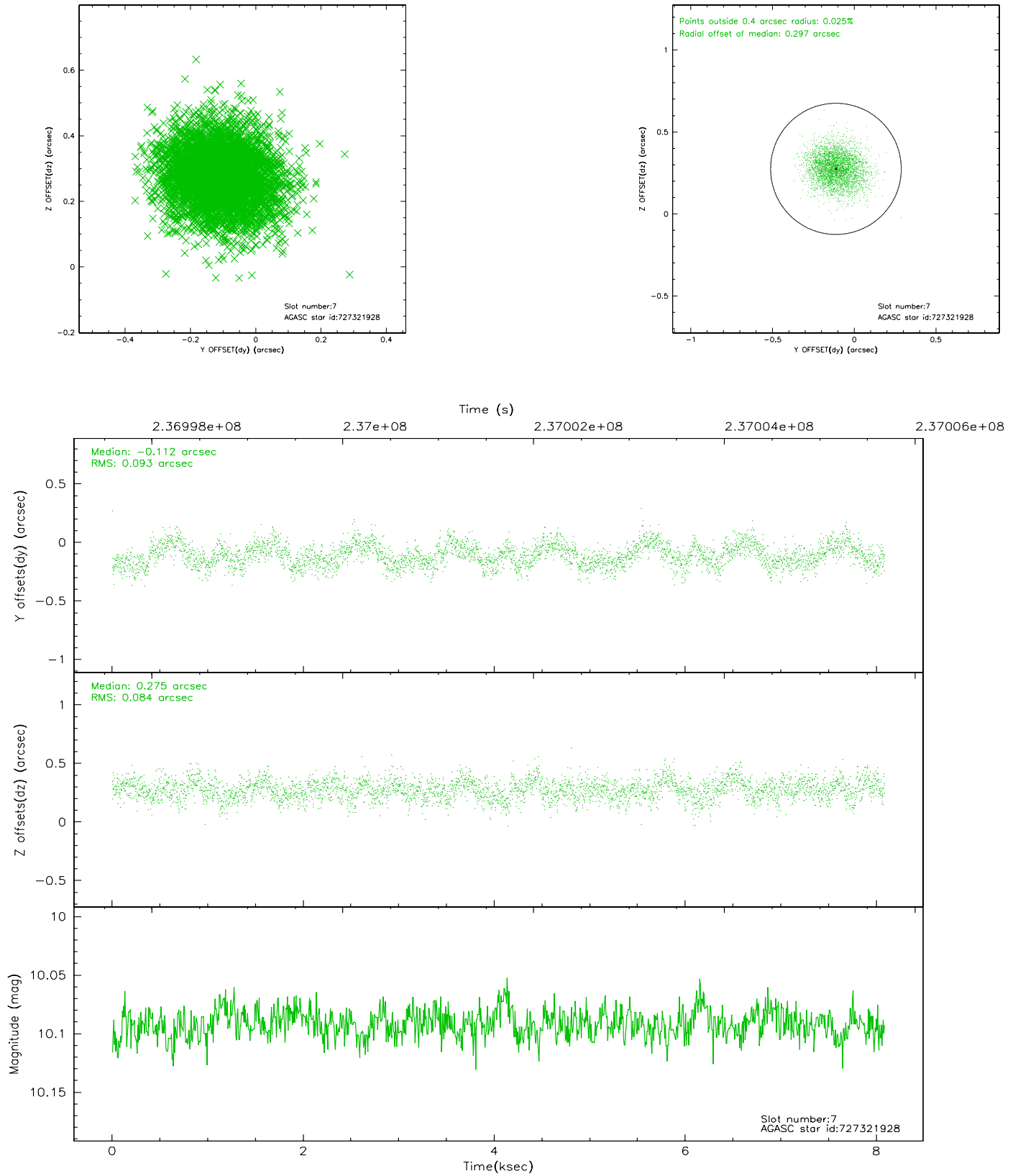
2.4.3 Slot 5



2.4.4 Slot 6

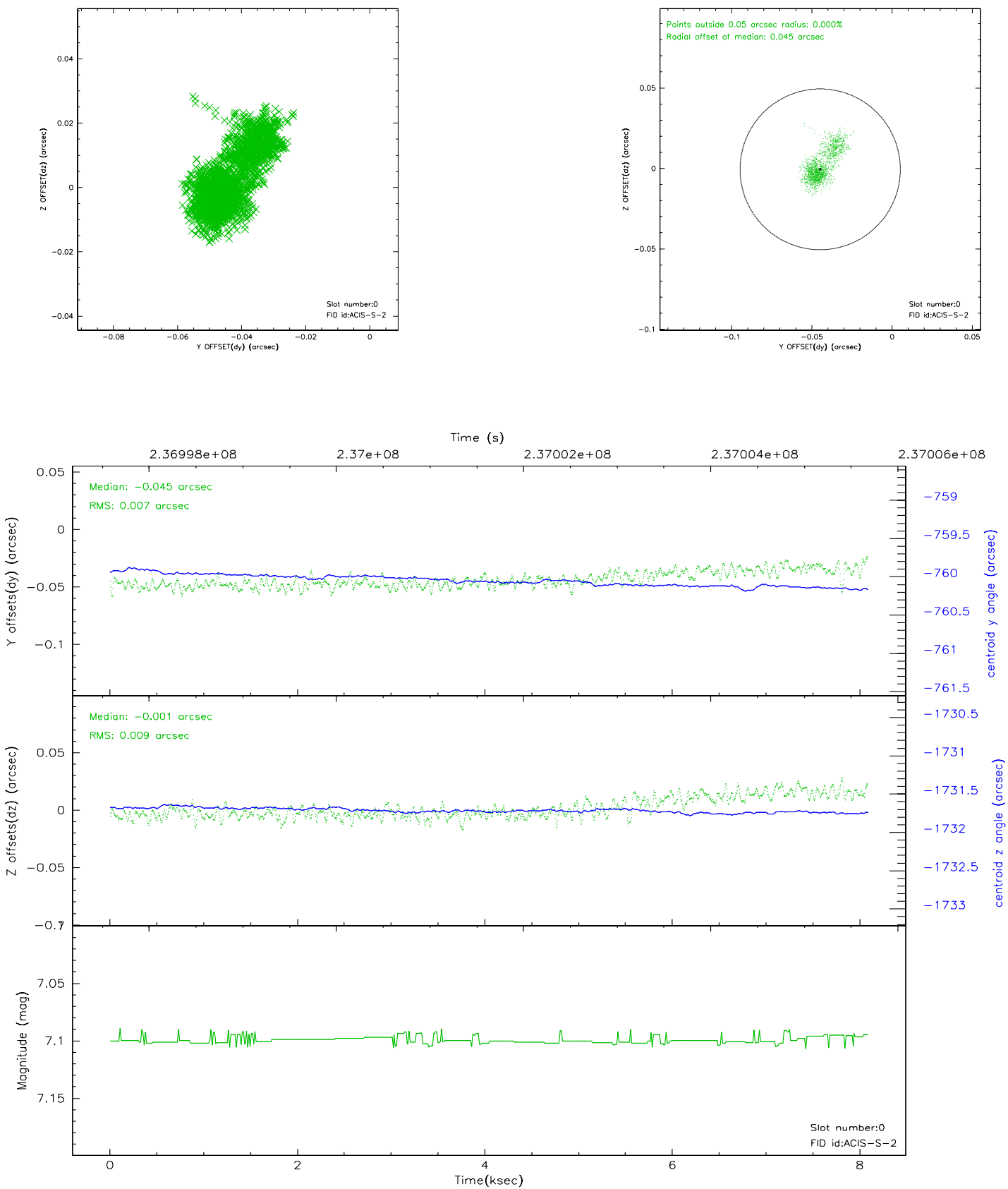


2.4.5 Slot 7

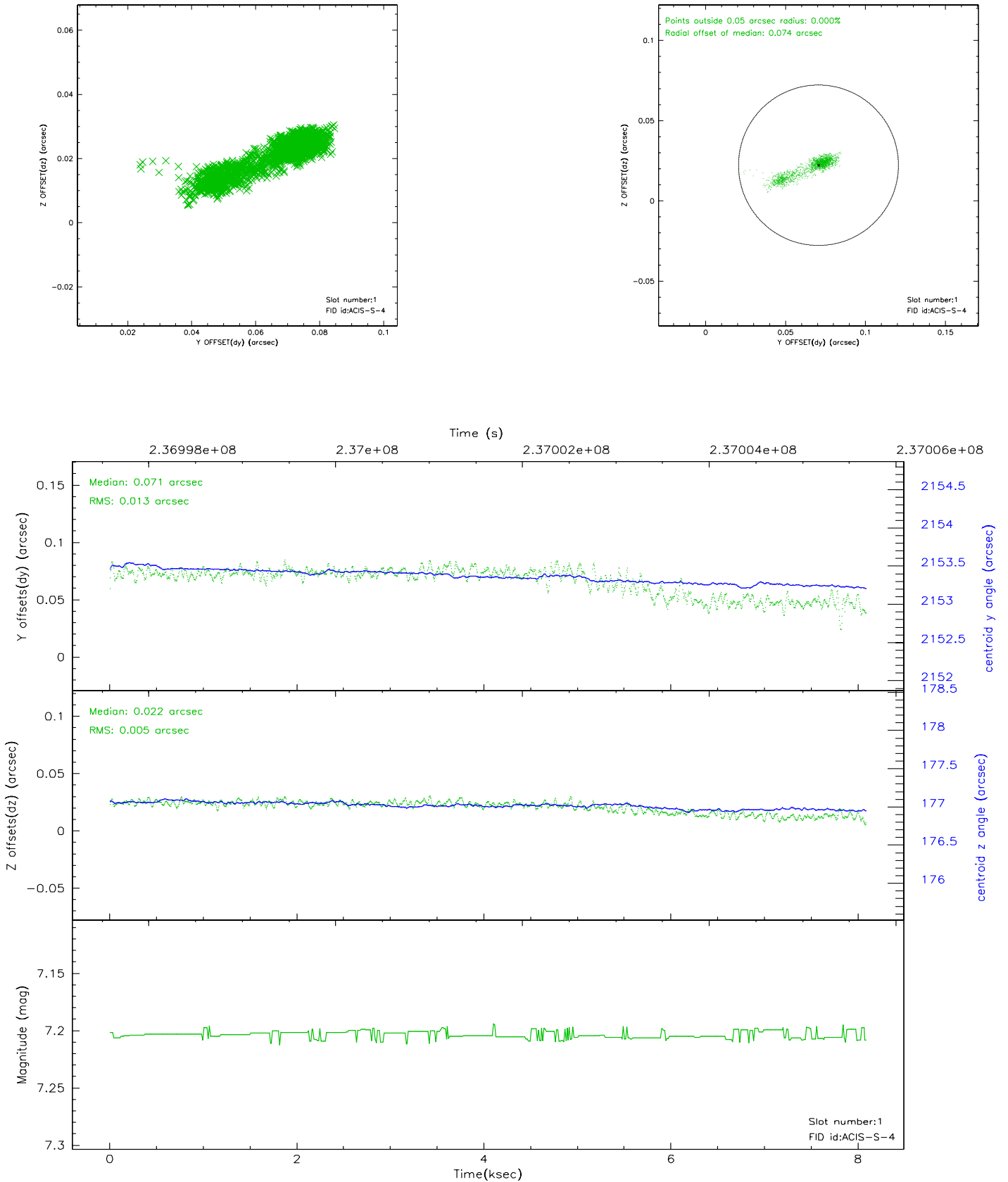


2.5 FID Slots

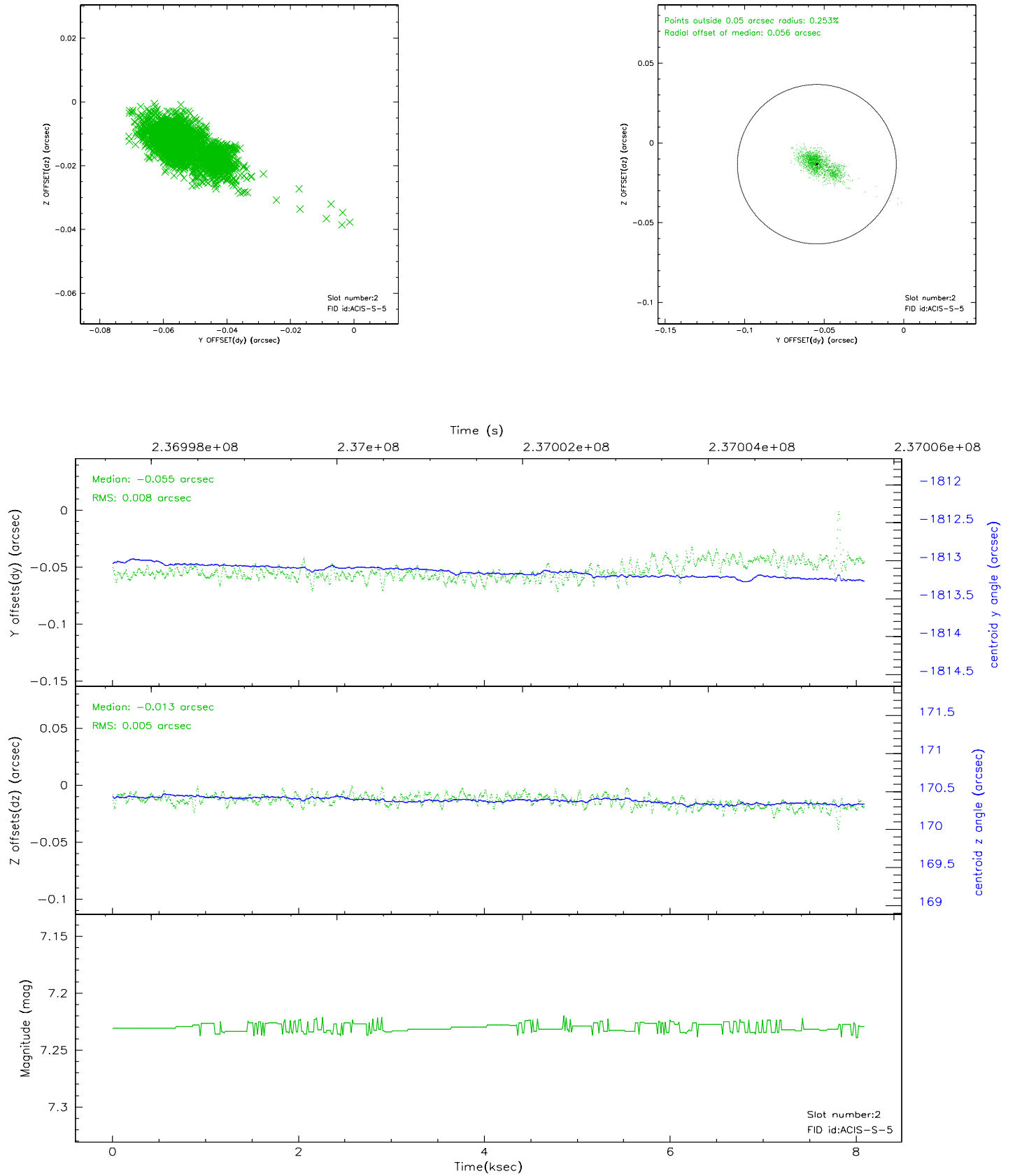
2.5.1 Slot 0



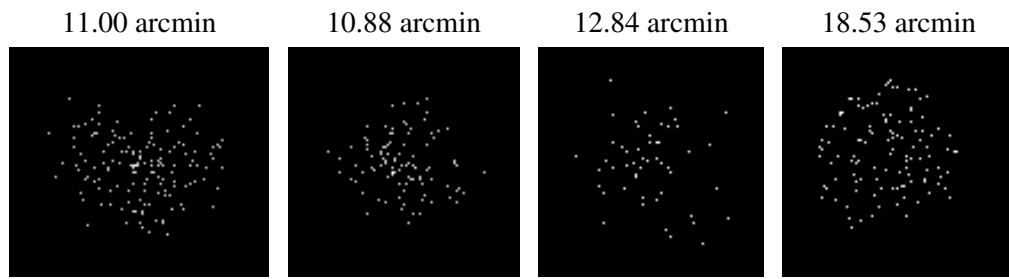
2.5.2 Slot 1



2.5.3 Slot 2



3 Point Sources



A Summary

A.1 Status

V&V Scientist	Jen Lauer
V&V Date (YYYY-MM-DD)	2006.03.14
V&V Edition	1
V&V Disposition and Status	OK
V&V Charge Time	8.086399

A.2 Comments

Window constraint met.