

V&V Reference Report

L2 ASCDS Version : 7.6.7.1

Observation 6329 - L2 Version 002
Chandra X-Ray Center

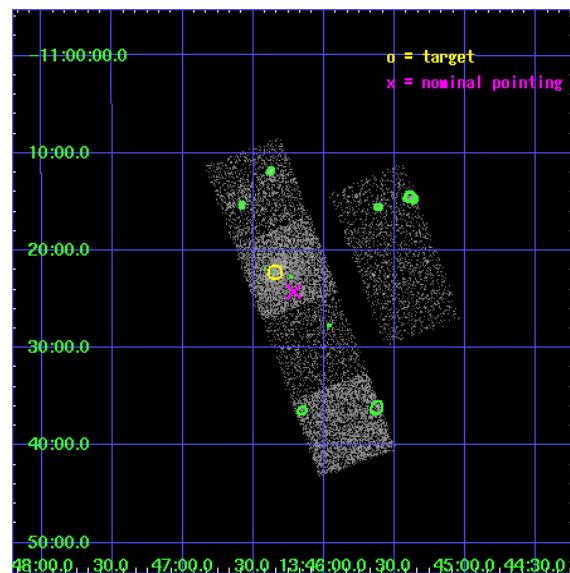
L2 Processing Date : Mar 14 2006

Contents

1	Front	2
2	OBI	3
2.1	OBI	3
2.1.1	Images	3
2.1.2	Bias	3
2.1.3	Parameters	4
2.1.4	Events	4
2.2	Compared Parameters	5
2.3	Aspect	6
2.4	Star Slots	9
2.4.1	Slot 3	9
2.4.2	Slot 4	10
2.4.3	Slot 5	11
2.4.4	Slot 6	12
2.4.5	Slot 7	13
2.5	FID Slots	14
2.5.1	Slot 0	14
2.5.2	Slot 1	15
2.5.3	Slot 2	16
3	Point Sources	17
A	Summary	18
A.1	Status	18
A.2	Comments	18

1 Front

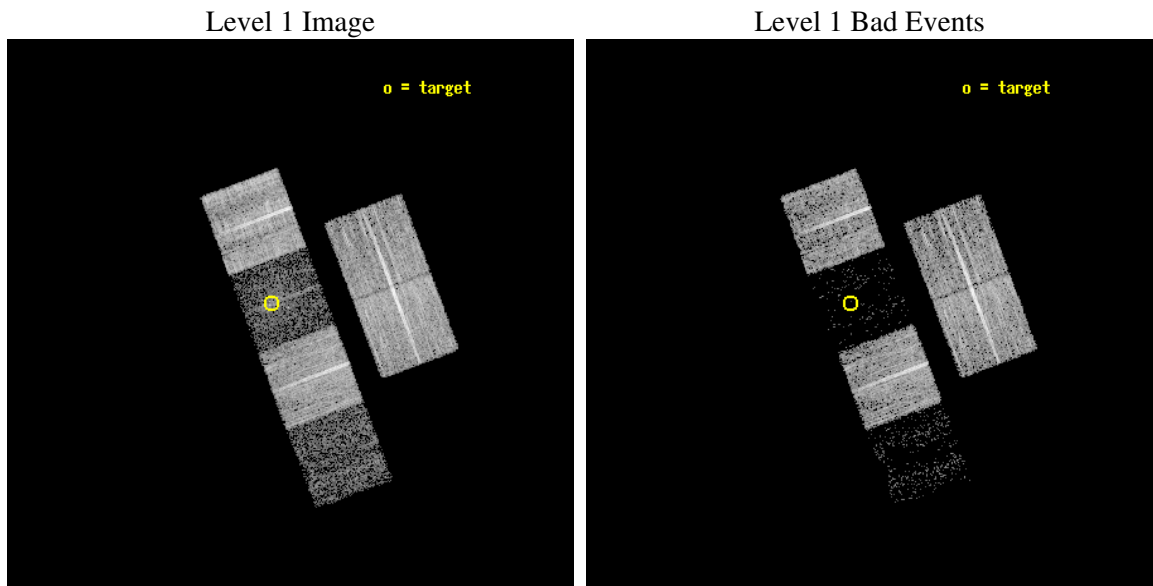
seq_num	100061
obs_id	6329
title	Comet 9P/Tempel 1 During the Deep Impact Encounter
observer	Dr. Carey Lisse
object	9P/Tempel 1
dtcycle	0
cycle	P
ra_targ	206.586065
dec_targ	-11.370077
ra_nom	206.55313229907
dec_nom	-11.403729574356
roll_nom	249.42915736327
revision	2
ontime	8428.7999686003
livetime	8322.0694281838
ontime2	8425.5590182245
ontime3	8428.7999686003
ontime5	8428.7999686003
ontime6	8428.7999686003
ontime7	8428.7999686003
ontime8	8428.7999686003
l2events	14662



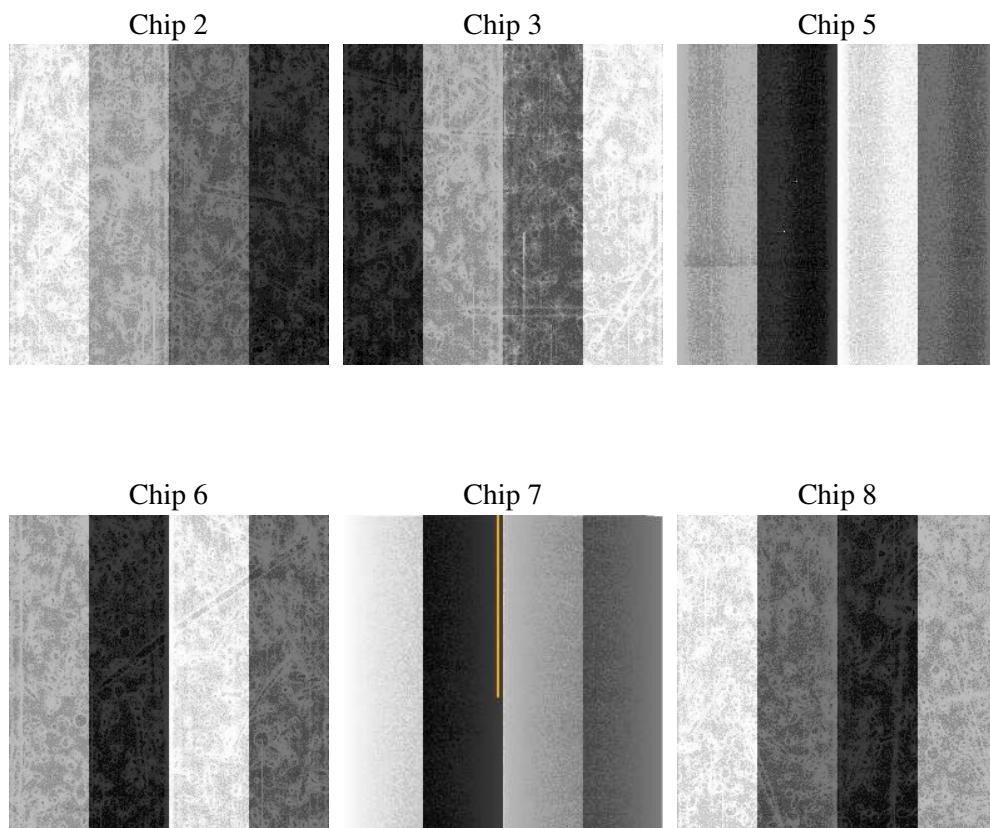
2 OBI

2.1 OBI

2.1.1 Images



2.1.2 Bias



2.1.3 Parameters

obi_num	0
ascdsver	7.6.7.1
caldbver	3.2.1
date	2006-03-14T10:47:09
revision	2

sched_exp_time	8250.000000
ontime	8624.3080042601
ontime2	8621.0670538843
ontime3	8624.3080042601
ontime5	8624.3079743683
ontime6	8624.3080042601
ontime7	8624.3080042601
ontime8	8624.3079743385
l1events	174465

2.1.4 Events

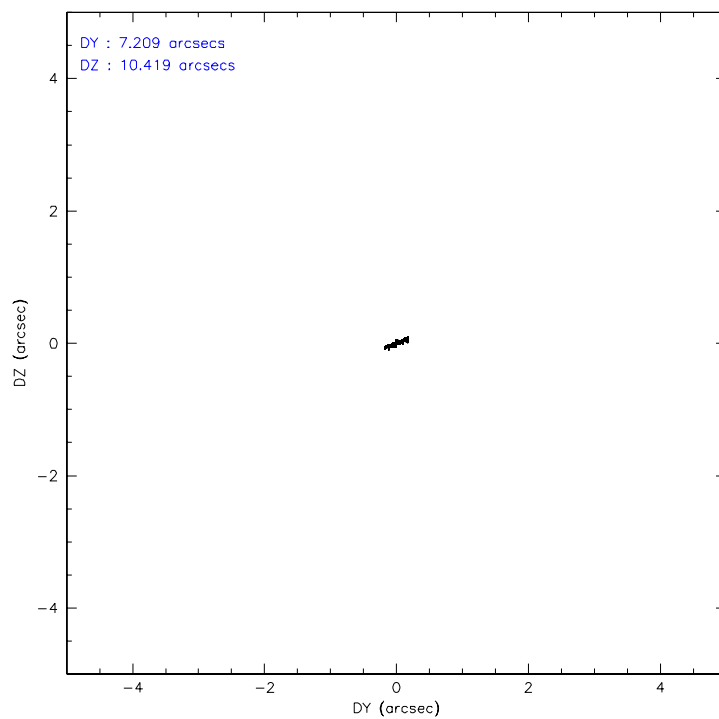
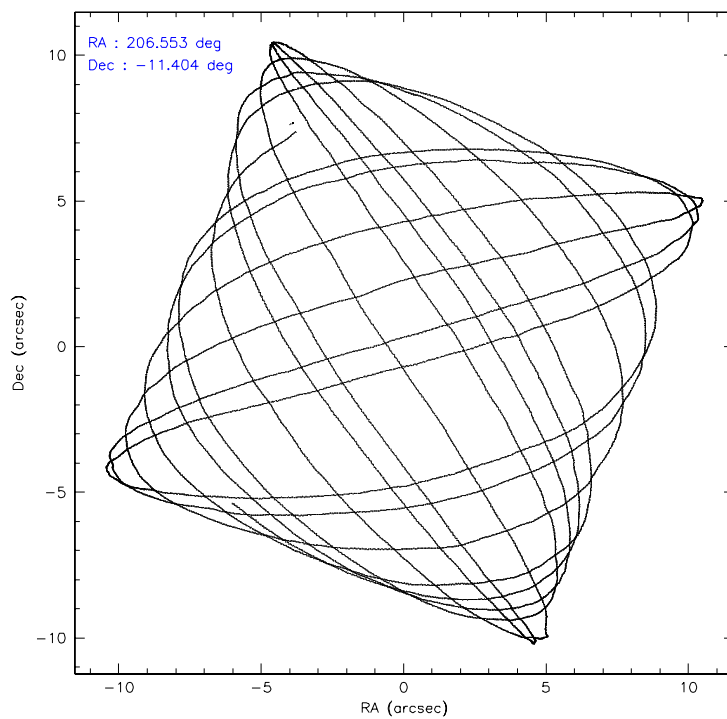
	ccd 2	ccd 3	ccd 5	ccd 6	ccd 7	ccd 8
level 1 events	43032	34717	6730	37218	6848	45920
rejected events	41219	33373	2315	35459	1224	33877
rejected %	95%	96%	34%	95%	17%	73%

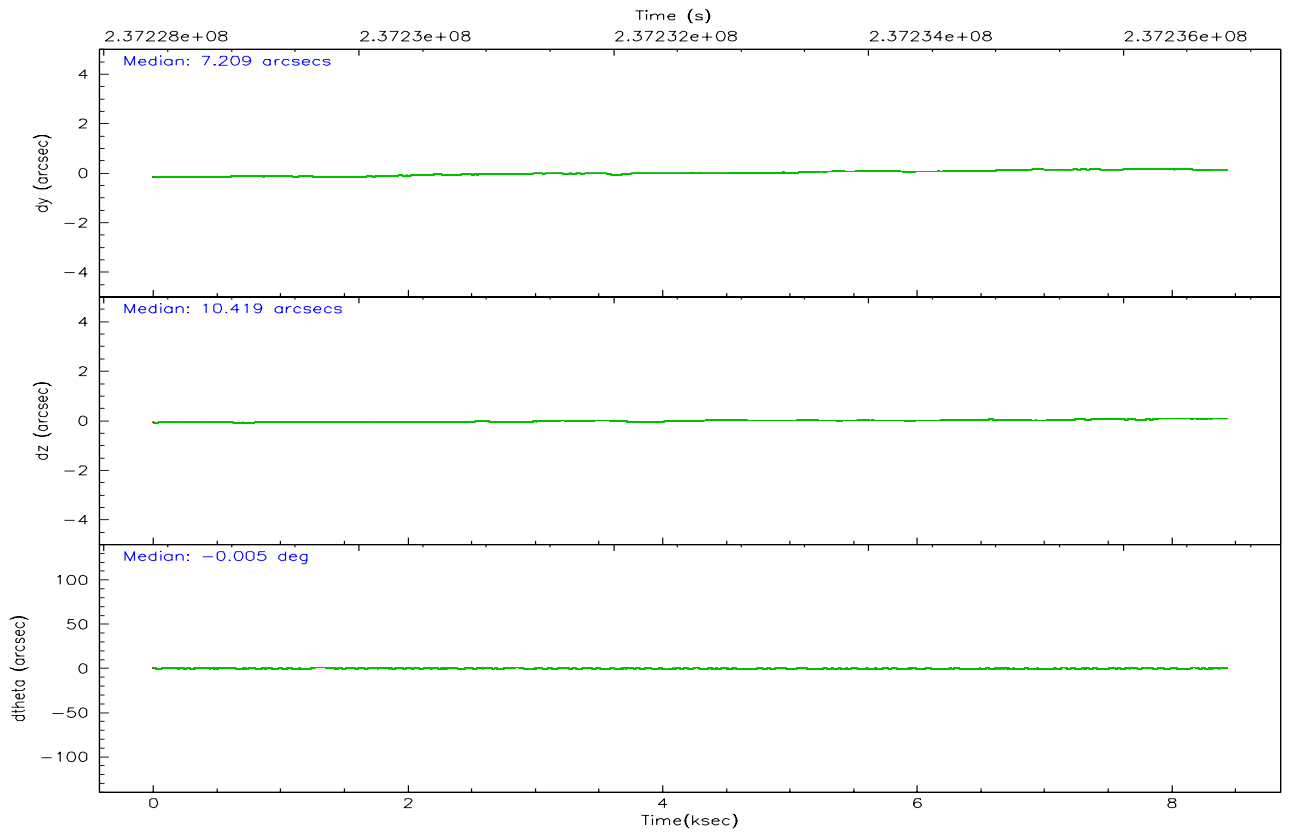
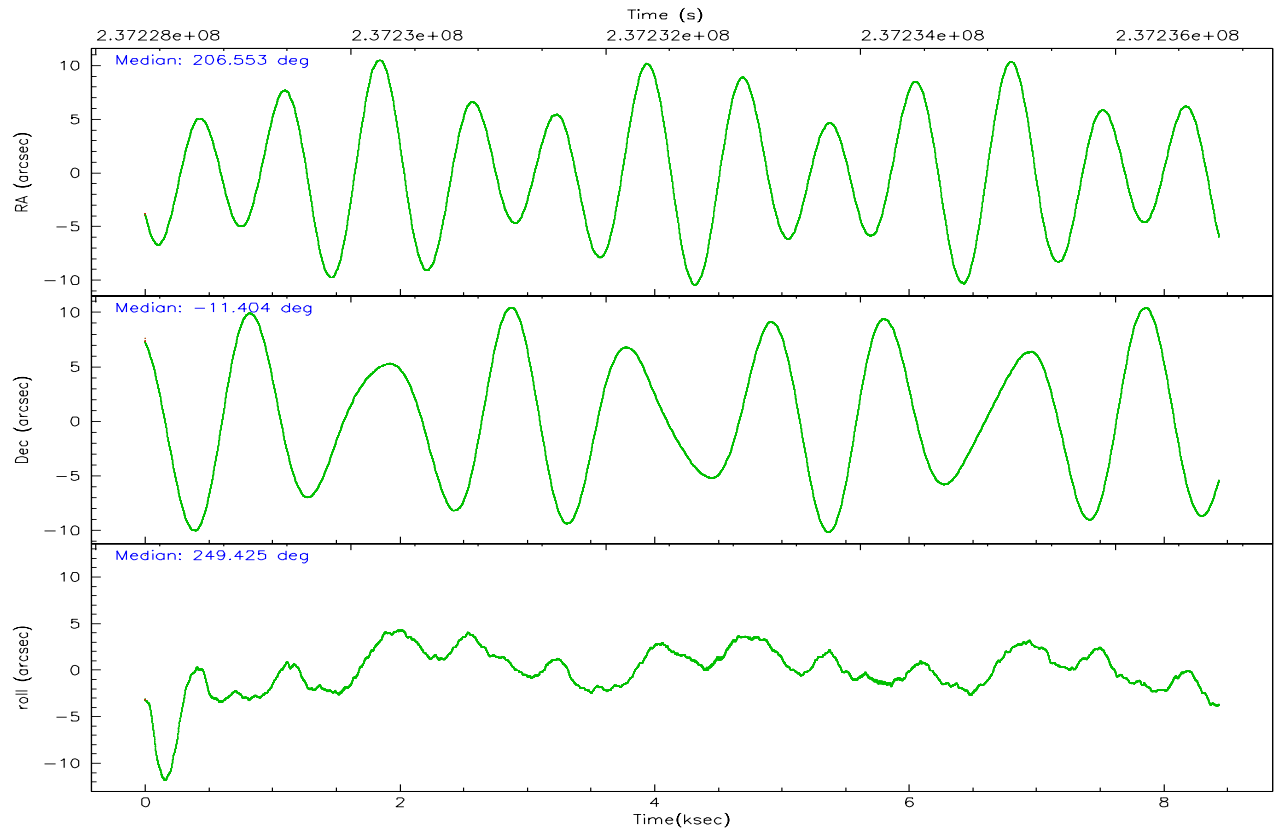
	ccd 2	ccd 3	ccd 5	ccd 6	ccd 7	ccd 8
grade 0 events	813	737	981	932	1825	3524
	1%	2%	14%	2%	26%	7%
grade 1 events	13	10	17	9	18	50
	0%	0%	0%	0%	0%	0%
grade 2 events	406	166	1921	275	1818	2773
	0%	0%	28%	0%	26%	6%
grade 3 events	212	221	528	244	701	1469
	0%	0%	7%	0%	10%	3%
grade 4 events	249	167	542	238	760	1322
	0%	0%	8%	0%	11%	2%
grade 5 events	59	28	348	26	150	236
	0%	0%	5%	0%	2%	0%
grade 6 events	166	79	553	103	627	3231
	0%	0%	8%	0%	9%	7%
grade 7 events	41114	33309	1840	35391	949	33315
	95%	95%	27%	95%	13%	72%

2.2 Compared Parameters

Parameter	Planned	Actual	Parameter	Planned	Actual
Instrument	ACIS	ACIS	Obspar format version number	6	6
Detector	ACIS-235678	ACIS-235678	Obspar file type	PREDICTED	ACTUAL
Grating	NONE	NONE	Obspar update status	NONE	UPDATED
Data mode	VFAINT	VFAINT	On-chip summing requested	N	N
Observation mode	POINTING	POINTING	Subarray requested	NONE	NONE
Pointing RA	206.548204	206.553132299071	Alternating exposures requested	N	N
Pointing Dec	-11.376885	-11.40372957435643	Primary exposure time	0.000000	3.2
Pointing Roll	249.271555	249.4291573632736			
SIM focus pos (mm)	-0.684267	-0.6828225247311905			
SIM defocus (mm)	0	0.001444936568705701			
SIM translation stage pos (mm)	-190.132523	-190.1400660498719			
SIM translation stage offset (mm)	0	0.00754346686406393			
Observation start time	237228567.184000	237228191.51488			
Observation start date	2005-07-08T16:48:23	2005-07-08T16:43:11			
Observation end time	237236817.184000	237237493.9028			
Observation end date	2005-07-08T19:05:53	2005-07-08T19:18:13			
Read mode	TIMED	TIMED			

2.3 Aspect



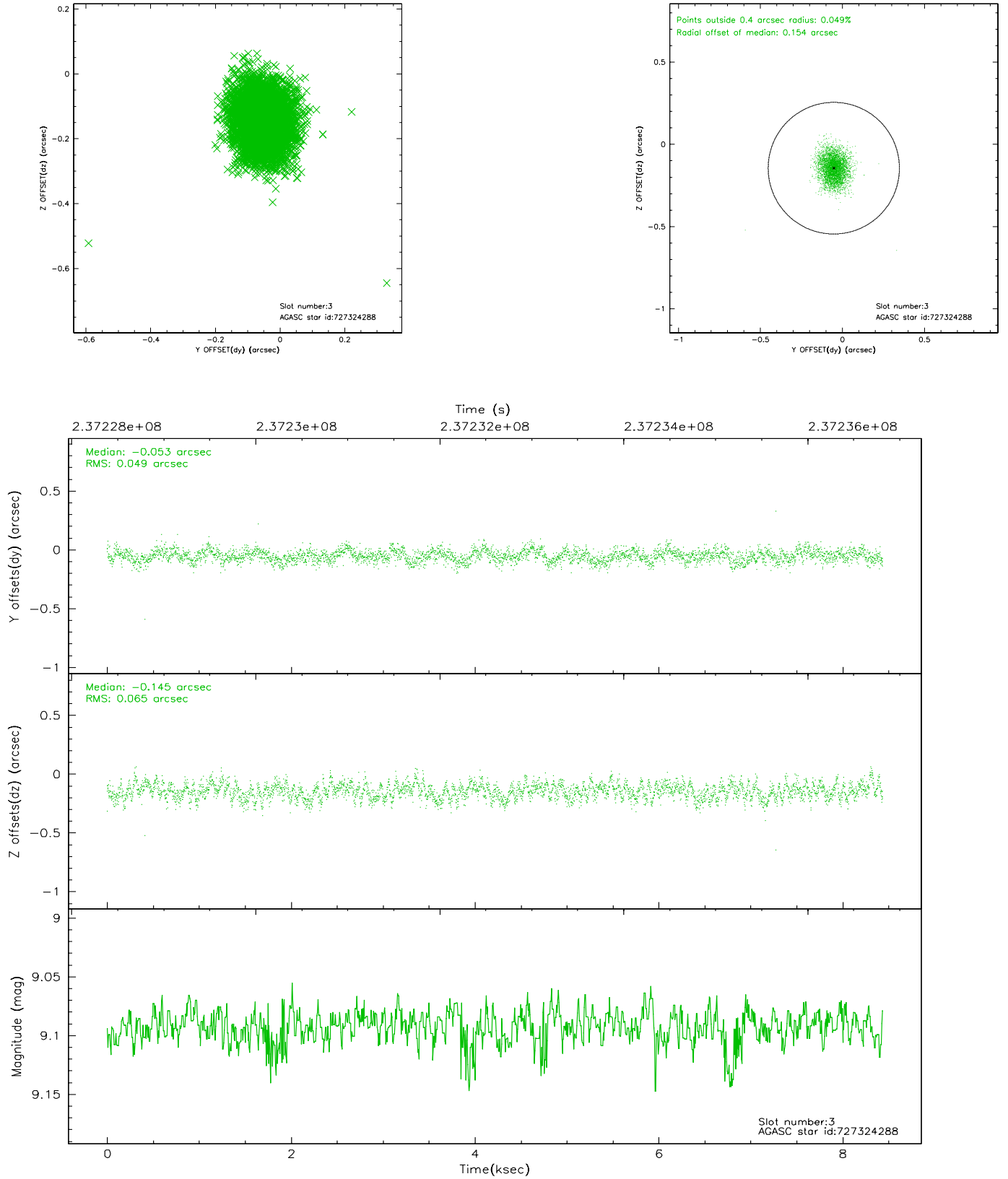


Slot Statistics

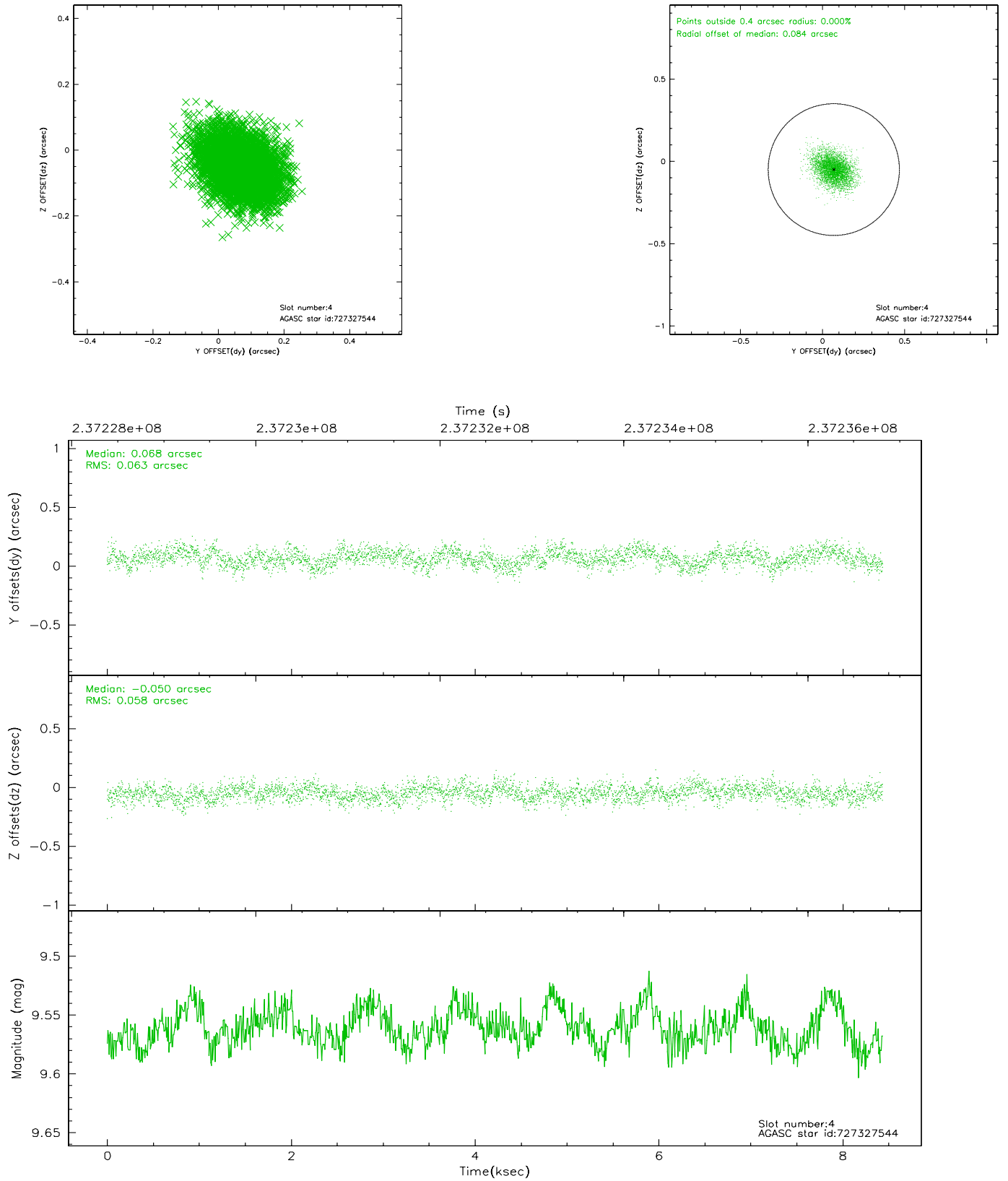
slot	status	id	mag	n_pts	med_dy	med_dz	dr1	dr2	ra	dec	mean_y	mean_z
0	FID	ACIS-S-2	7.10	2059	-0.045	-0.002	0.007	0.016	0.000000	0.000000	-759.98	-1731.69
1	FID	ACIS-S-4	7.20	2059	0.068	0.023	0.006	0.021	0.000000	0.000000	2153.07	176.19
2	FID	ACIS-S-5	7.23	2058	-0.053	-0.012	0.008	0.014	0.000000	0.000000	-1812.03	170.50
3	GUIDE	727324288	9.09	4114	-0.053	-0.145	0.086	0.139	206.082018	-11.172416	-104.20	-1800.11
4	GUIDE	727327544	9.56	4113	0.068	-0.050	0.091	0.150	206.398747	-11.483258	545.02	-357.95
5	GUIDE	728236632	9.68	4110	0.111	0.102	0.119	0.185	206.842205	-12.122561	2145.13	1918.44
6	GUIDE	728245744	8.66	4116	-0.146	0.109	0.069	0.114	206.959040	-11.284446	-823.20	1239.66
7	GUIDE	727321472	9.83	4112	0.021	-0.008	0.139	0.231	206.729745	-11.411859	-108.74	644.07

2.4 Star Slots

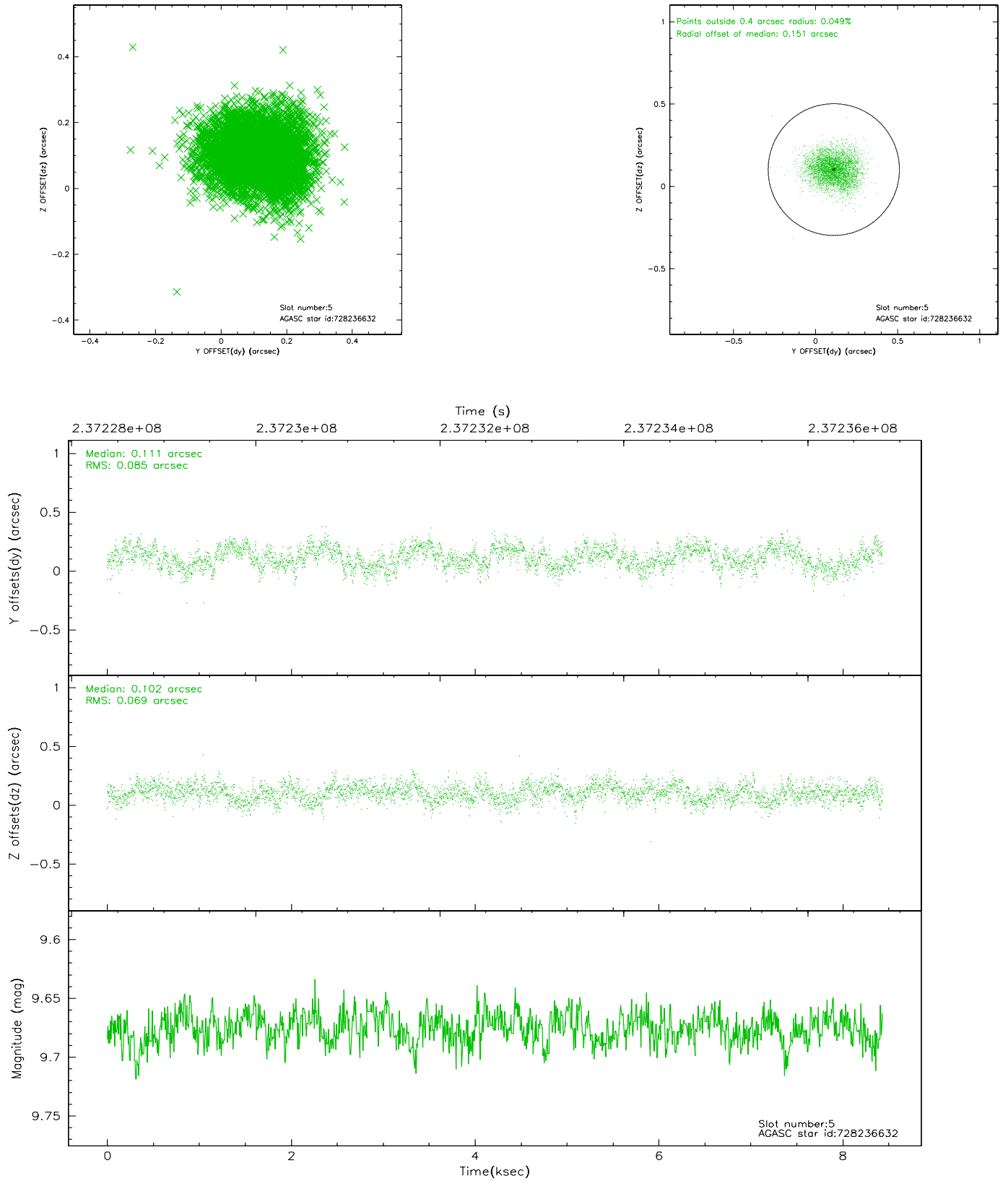
2.4.1 Slot 3



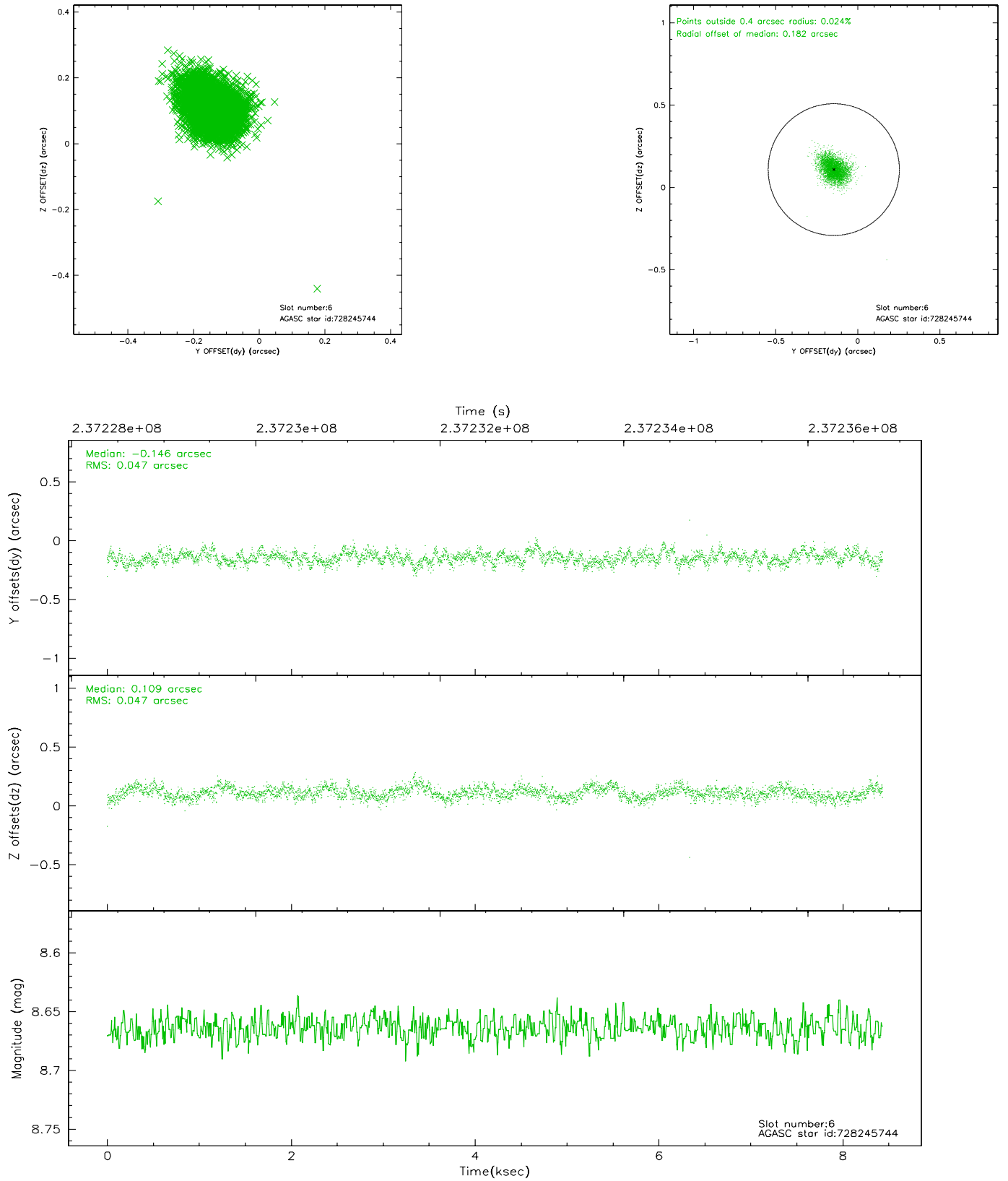
2.4.2 Slot 4



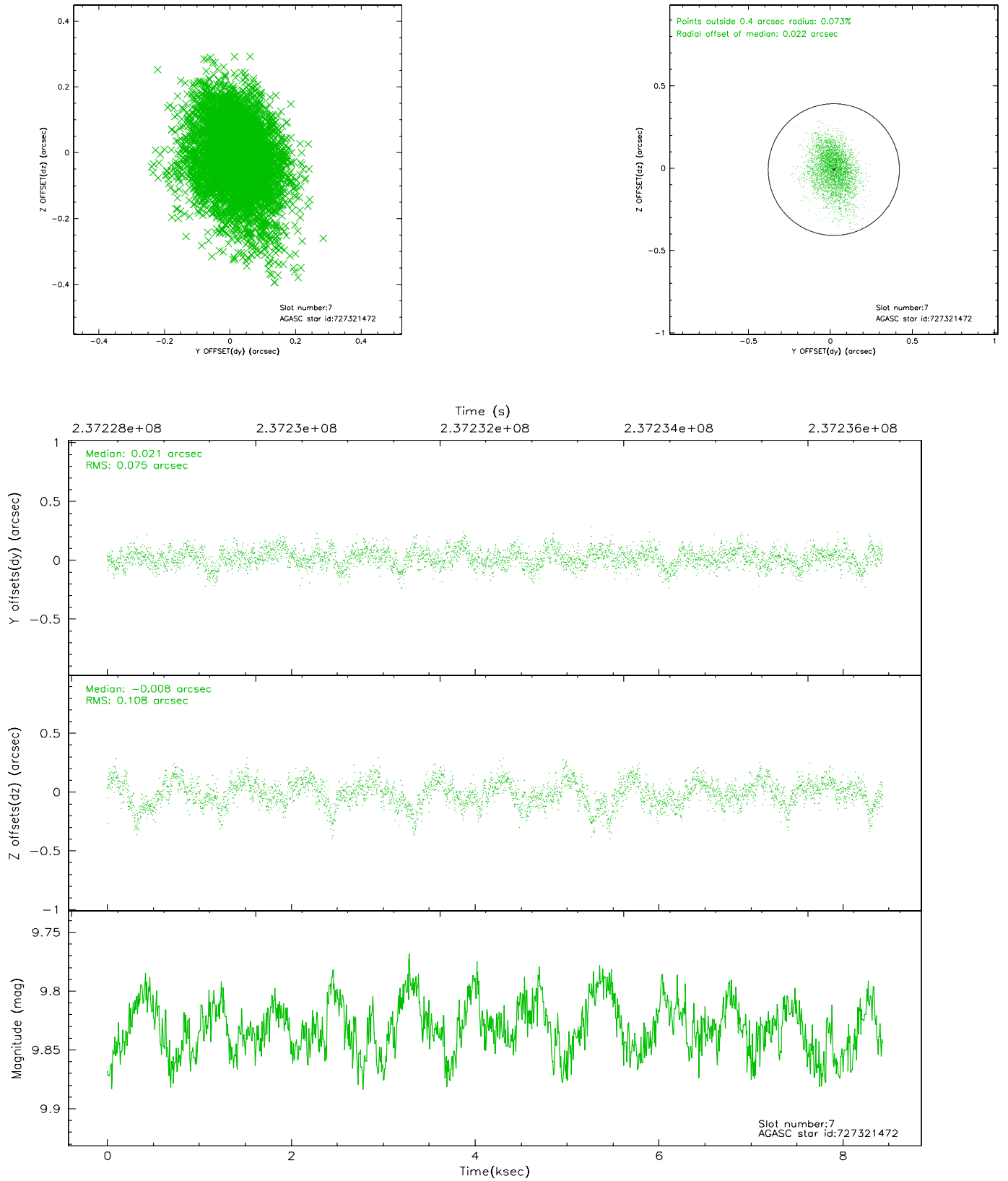
2.4.3 Slot 5



2.4.4 Slot 6

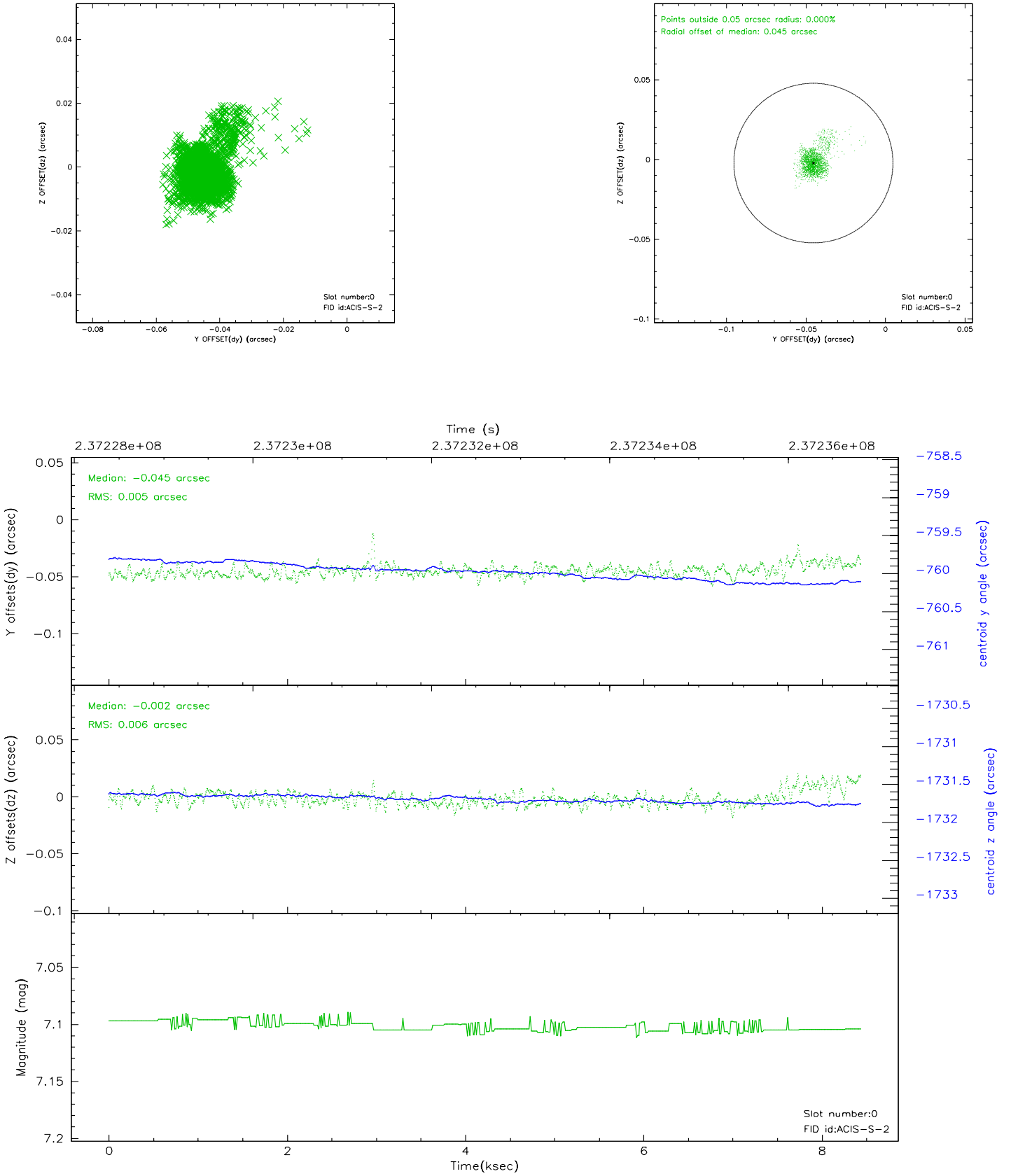


2.4.5 Slot 7

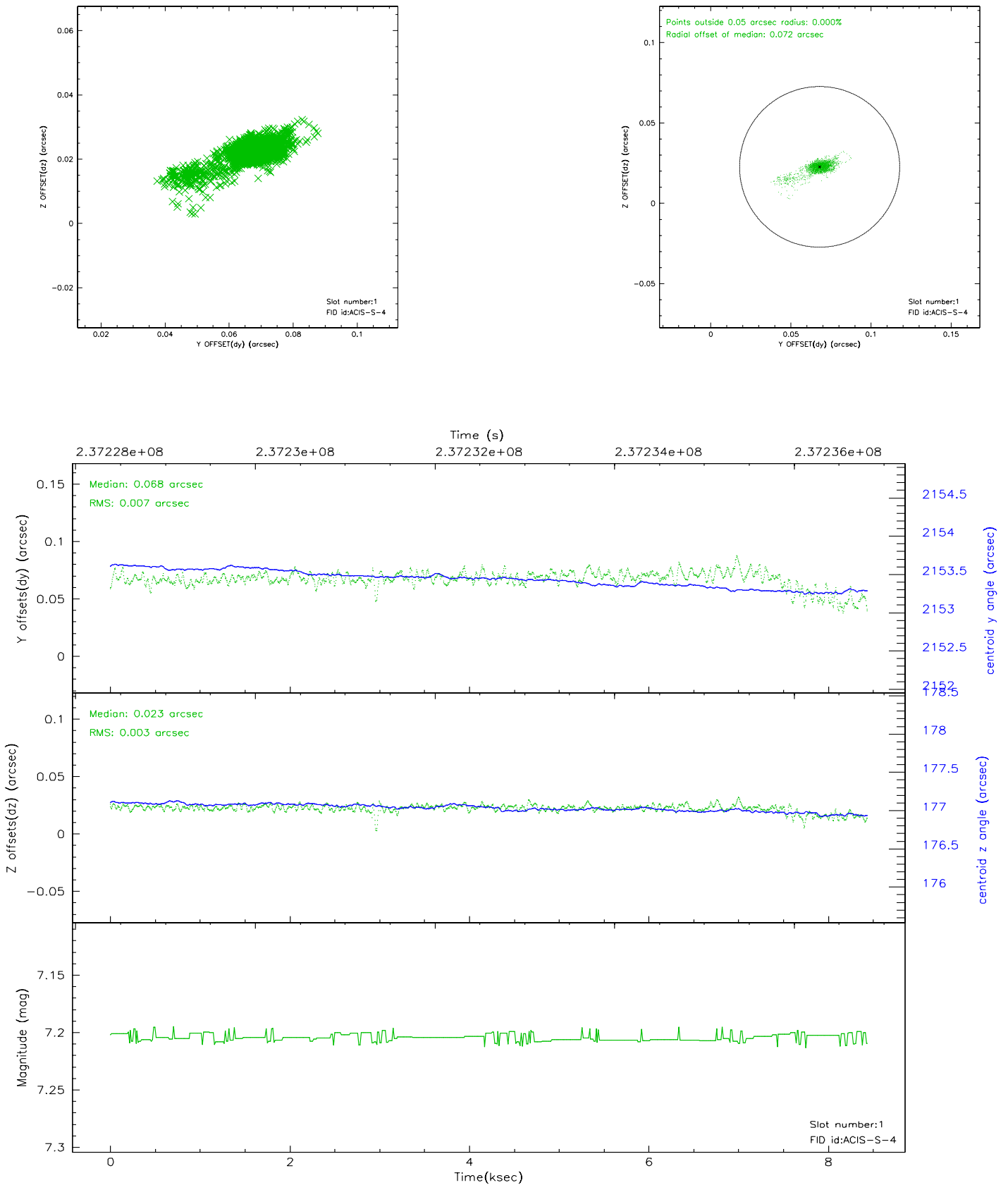


2.5 FID Slots

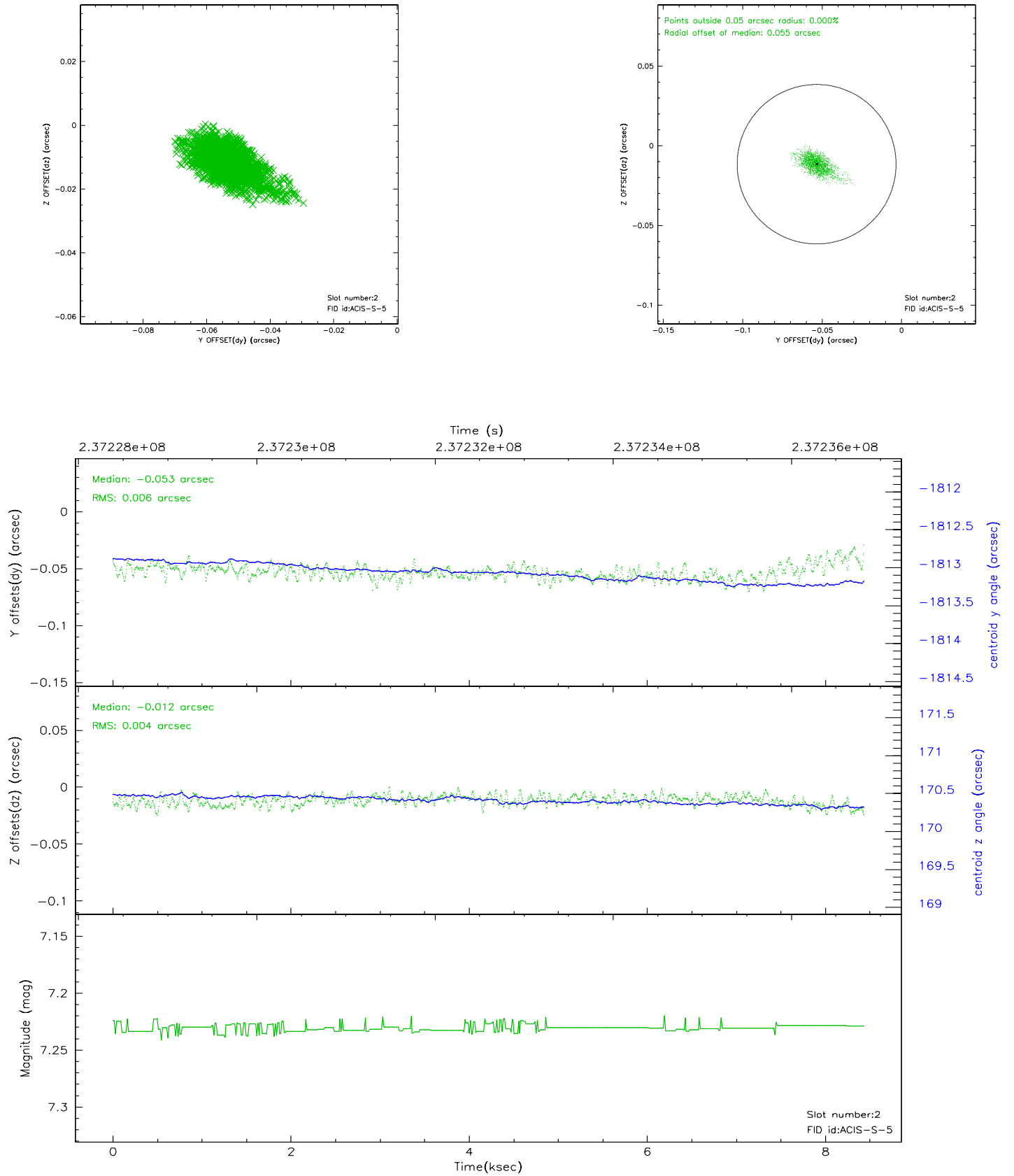
2.5.1 Slot 0



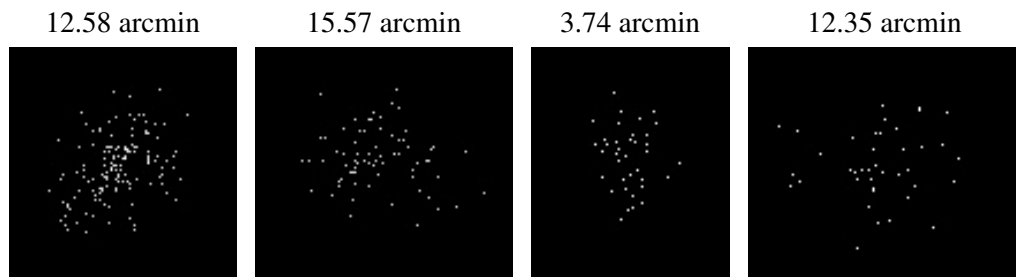
2.5.2 Slot 1



2.5.3 Slot 2



3 Point Sources



A Summary

A.1 Status

V&V Scientist	Jen Lauer
V&V Date (YYYY-MM-DD)	2006.03.14
V&V Edition	1
V&V Disposition and Status	OK
V&V Charge Time	8.428799

A.2 Comments