

V&V Reference Report

L2 ASCDS Version : 8.5.1.1

Observation 6328 - L2 Version 3
Chandra X-Ray Center

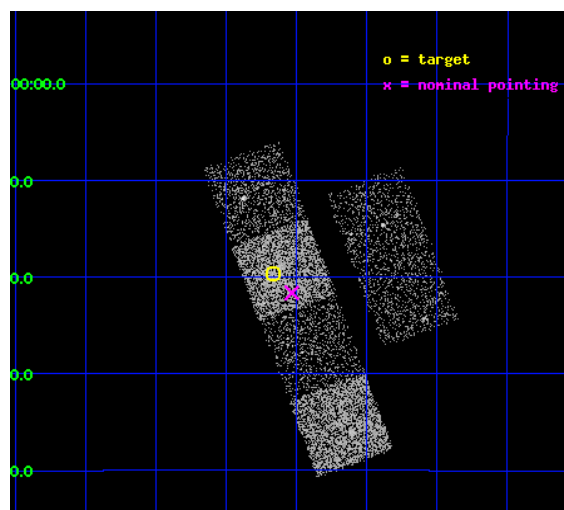
L2 Processing Date : Dec 25 2012

Contents

1	Front	2
2	OBI	3
2.1	OBI	3
2.1.1	Images	3
2.1.2	Bias	3
2.1.3	Parameters	4
2.1.4	Events	4
2.2	Compared Parameters	5
2.3	Aspect	6
2.4	Star Slots	9
2.4.1	Slot 3	9
2.4.2	Slot 4	10
2.4.3	Slot 5	11
2.4.4	Slot 6	12
2.4.5	Slot 7	13
2.5	FID Slots	14
2.5.1	Slot 0	14
2.5.2	Slot 1	15
2.5.3	Slot 2	16
A	Summary	17
A.1	Status	17
A.2	Comments	17

1 Front

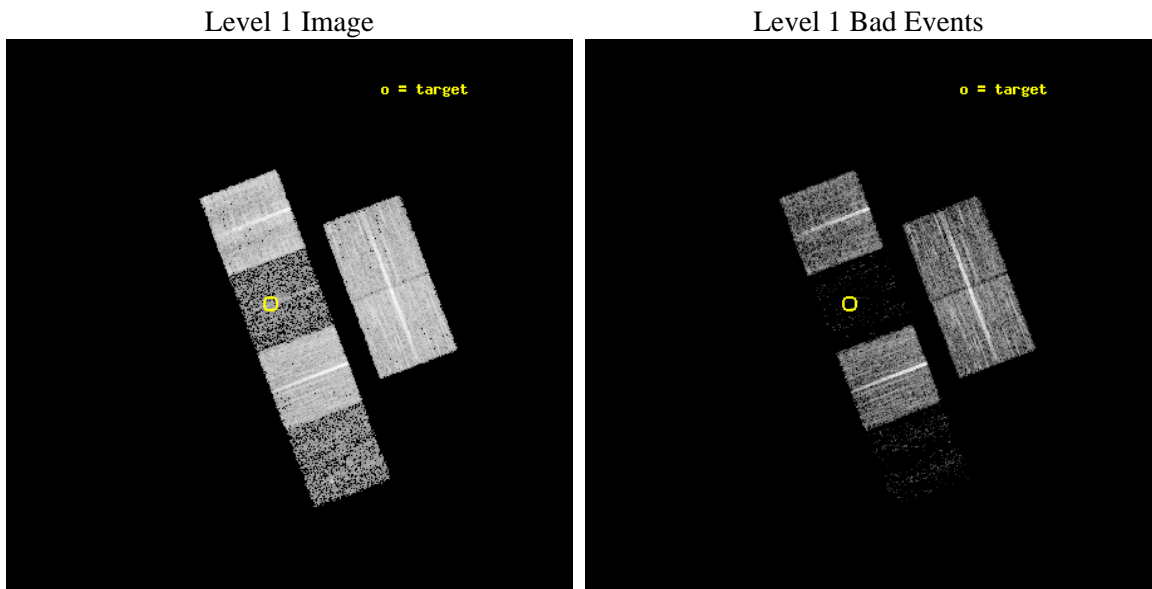
seq_num	100061	Sequence number
obs_id	6328	Observation id
title	Comet 9P/Tempel 1 During the Deep Impact Encounter	Proposal title
observer	Dr. Carey Lisse	Principal investigator
object	9P/Tempel 1	Source name
dtcycle	0	
cycle	P	events from which exps? Prim/Second/Both
ra_targ	206.541263	Observer's specified target RA [deg]
dec_targ	-11.327092	Observer's specified target Dec [deg]
ra_nom	206.50828290306	Nominal RA [deg]
dec_nom	-11.360762916601	Nominal Dec [deg]
roll_nom	249.41124682958	Nominal Roll [deg]
revision	3	Processing version of data
ontime	8428.7999686003	Sum of GTIs [s]
livetime	8322.0694281838	Livetime [s]
ontime2	8425.5590879619	Sum of GTIs [s]
ontime3	8428.7999686003	Sum of GTIs [s]
ontime5	8428.7999686003	Sum of GTIs [s]
ontime6	8428.7999686003	Sum of GTIs [s]
ontime7	8428.7999686003	Sum of GTIs [s]
ontime8	8428.7999686003	Sum of GTIs [s]
l2events	13199	Number of level 2 events



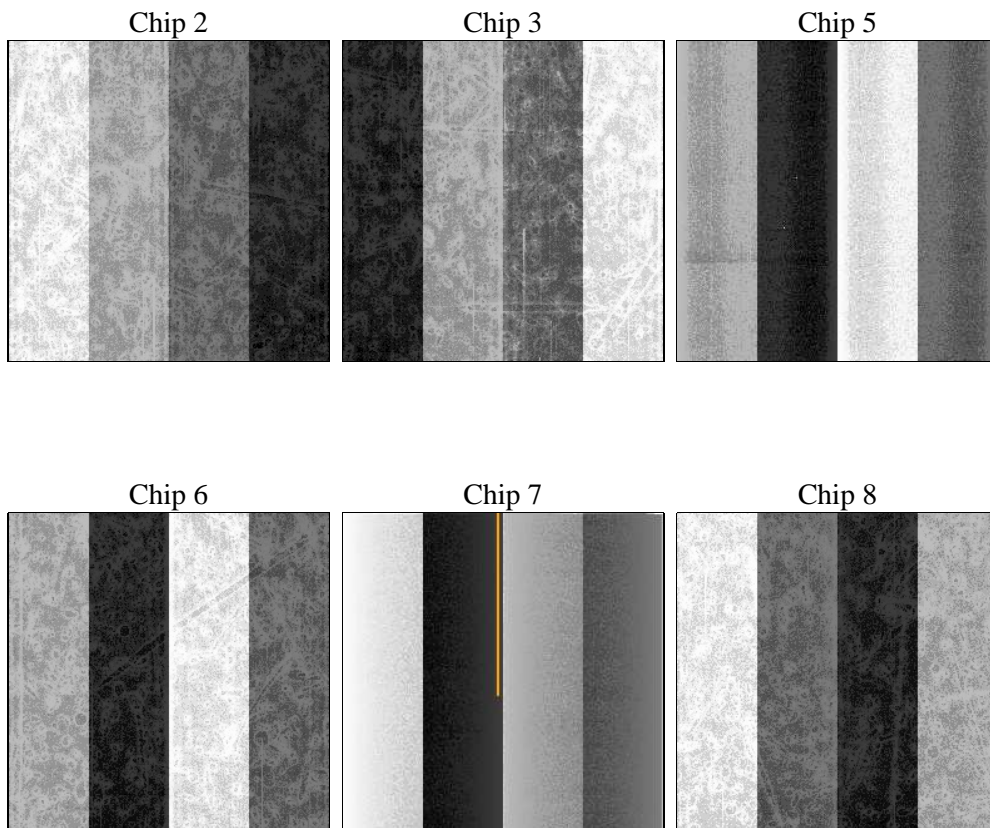
2 OBI

2.1 OBI

2.1.1 Images



2.1.2 Bias



2.1.3 Parameters

obi_num	0	Obi number	sched_exp_time	8250.000000	[s] Scheduled observation exposure time
ascdsver	8.5.1.1	Processing system revision	ontime	8428.7999686003	Sum of GTIs [s]
caldsver	4.5.5	 	ontime2	8425.5590879619	Sum of GTIs [s]
date	2012-12-25T23:56:07	Date and time of file creation	ontime3	8428.7999686003	Sum of GTIs [s]
revision	3	Processing version of data	ontime5	8428.7999686003	Sum of GTIs [s]
			ontime6	8428.7999686003	Sum of GTIs [s]
			ontime7	8428.7999686003	Sum of GTIs [s]
			ontime8	8428.7999686003	Sum of GTIs [s]
			l1events	180756	Number of level 1 events

2.1.4 Events

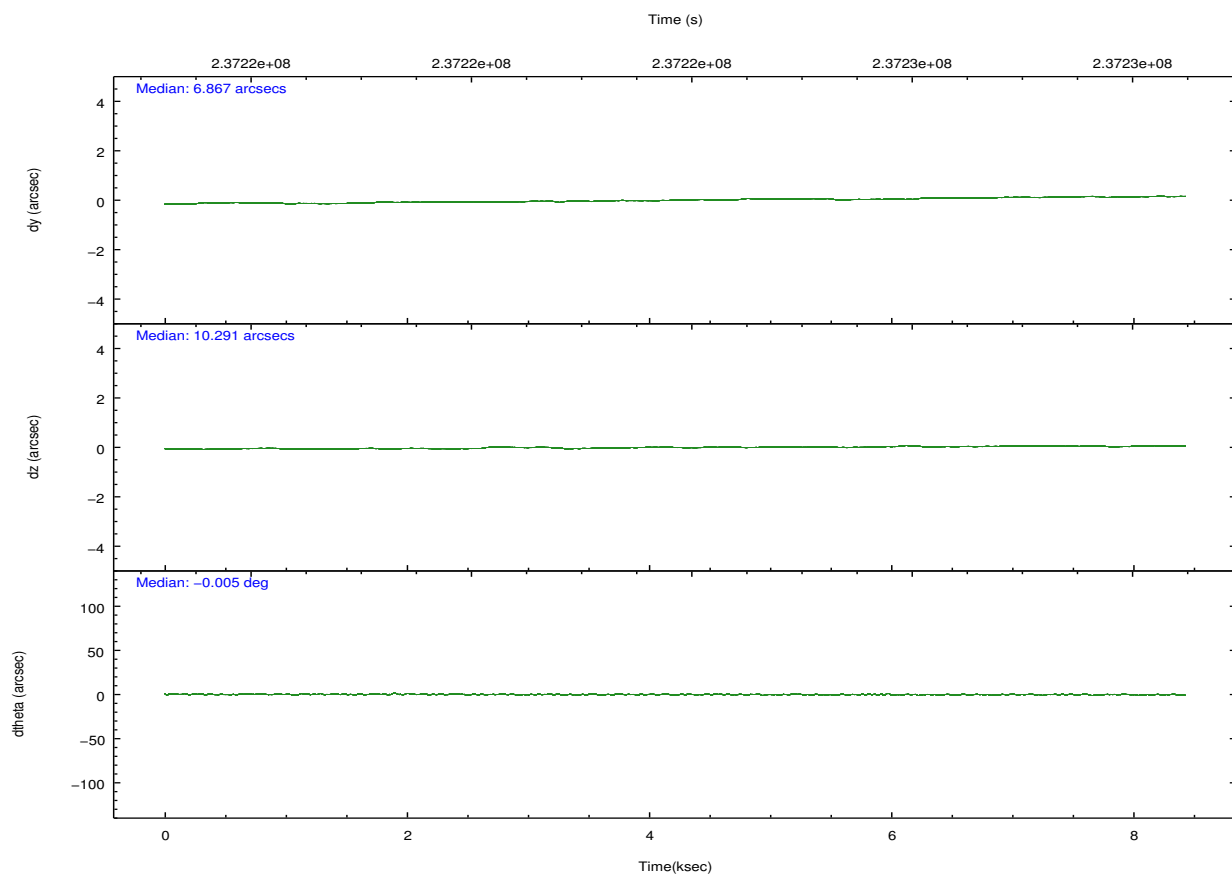
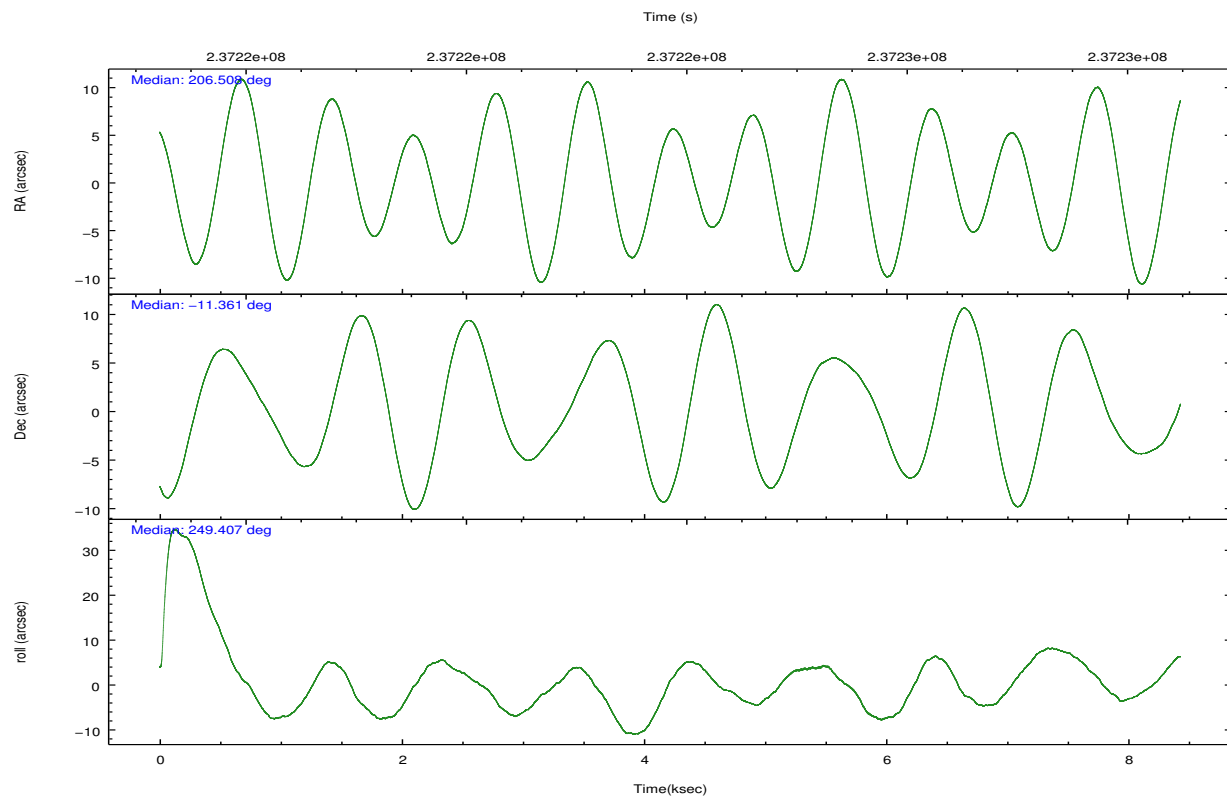
	ccd 2	ccd 3	ccd 5	ccd 6	ccd 7	ccd 8
level 1 events	45450	37370	6882	39987	6228	44839
rejected events	43585	36029	2267	38406	1317	33105
rejected %	95%	96%	32%	96%	21%	73%

	ccd 2	ccd 3	ccd 5	ccd 6	ccd 7	ccd 8
grade 0 events	792	684	1387	787	1622	3642
	1%	1%	20%	1%	26%	8%
grade 1 events	8	13	46	9	20	38
	0%	0%	0%	0%	0%	0%
grade 2 events	438	188	1706	295	1521	2562
	0%	0%	24%	0%	24%	5%
grade 3 events	254	217	602	214	715	1534
	0%	0%	8%	0%	11%	3%
grade 4 events	269	208	559	212	655	1402
	0%	0%	8%	0%	10%	3%
grade 5 events	60	36	345	26	169	237
	0%	0%	5%	0%	2%	0%
grade 6 events	175	101	553	126	597	2988
	0%	0%	8%	0%	9%	6%
grade 7 events	43454	35923	1684	38318	929	32436
	95%	96%	24%	95%	14%	72%

2.2 Compared Parameters

Parameter	Planned	Actual	Parameter	Planned	Actual
Instrument	ACIS	ACIS	Obspar format version number	7	7
Detector	ACIS-235678	ACIS-235678	Obspar file type	PREDICTED	ACTUAL
Grating	NONE	NONE	Obspar update status	NONE	UPDATED
Data mode	VFAINT	VFAINT	Number of optional ACIS chips dropped	0	0
Observation mode	POINTING	POINTING	On-chip summing requested	N	N
[deg] Pointing RA	206.503398	206.5082829030586	Subarray requested	NONE	NONE
[deg] Pointing Dec	-11.333889	-11.36076291660061	Alternating exposures requested	N	N
[deg] Pointing Roll	249.253658	249.4112468295817	[s] Primary exposure time	0.000000	3.2
[mm] SIM focus pos	-0.684267	-0.6828225247311905			
[mm] SIM defocus	0	0.001444936568705701			
[mm] SIM translation stage pos	-190.132523	-190.1400660498719			
[mm] SIM translation stage offset	0	0.00754346686406393			
[s] Observation start time (MET)	237219807.184000	237219431.86447			
Observation start date	2005-07-08T14:22:23	2005-07-08T14:17:11			
[s] Observation end time (MET)	237228057.184000	237228191.51488			
Observation end date	2005-07-08T16:39:53	2005-07-08T16:43:11			
Read mode	TIMED	TIMED			

2.3 Aspect

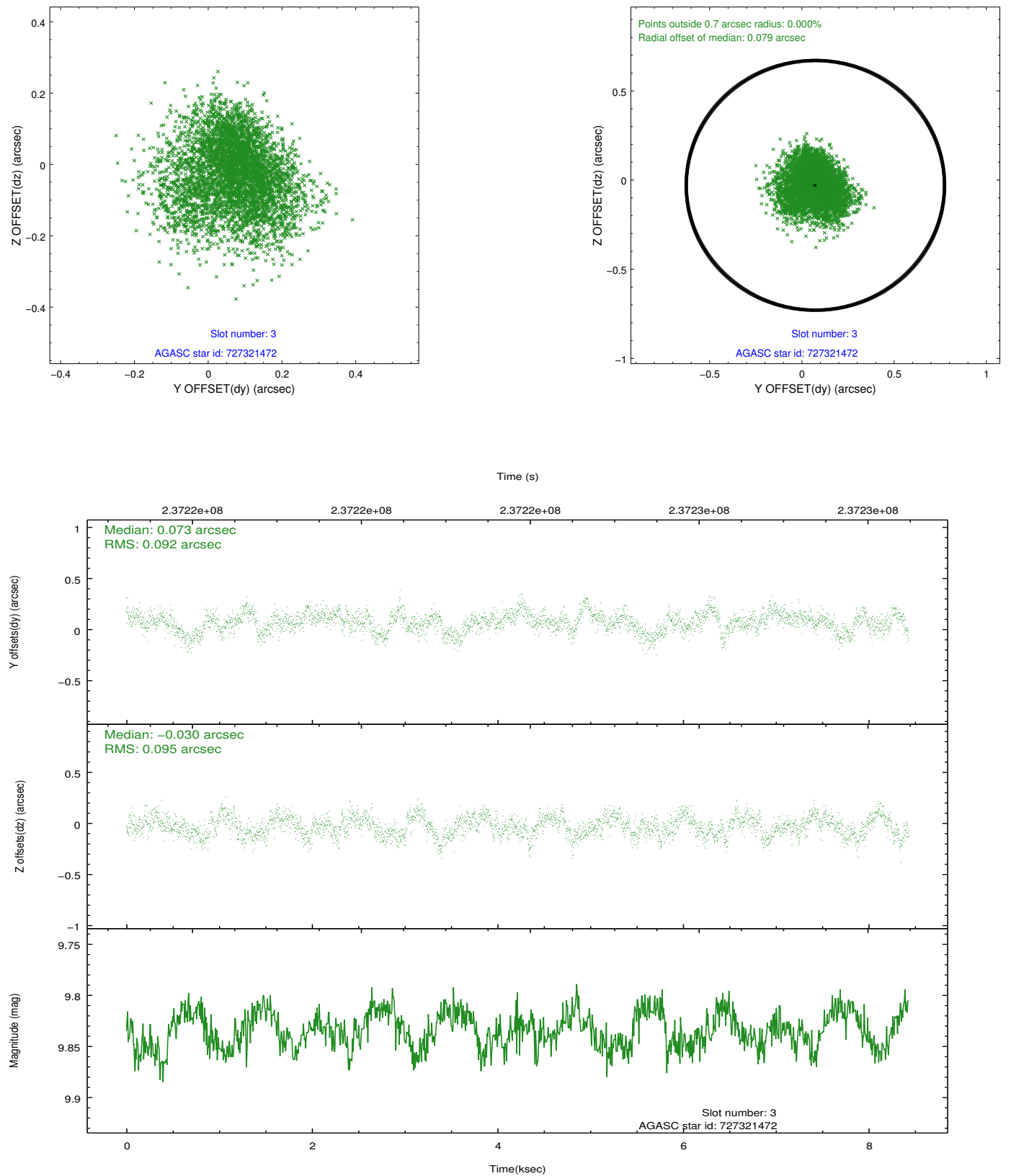


Slot Statistics

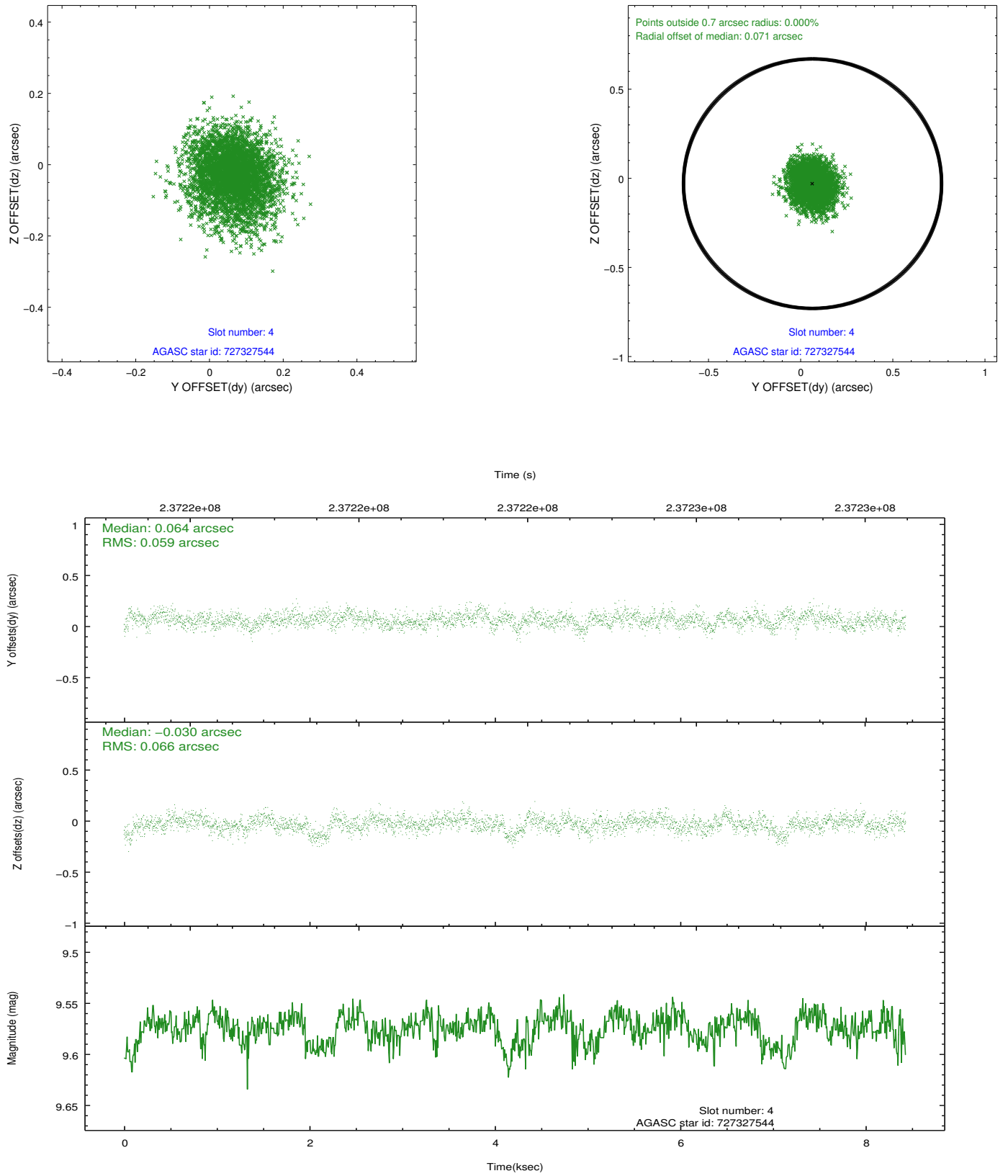
slot	status	id	mag	n_pts	med_dy	med_dz	dr1	dr2	ra	dec	mean_y	mean_z
0	FID	ACIS-S-2	7.10	2056	-0.063	-0.024	0.007	0.011	0.000000	0.000000	-759.64	-1731.58
1	FID	ACIS-S-4	7.21	2056	0.106	0.037	0.005	0.010	0.000000	0.000000	2153.47	176.34
2	FID	ACIS-S-5	7.23	2057	-0.074	-0.004	0.007	0.012	0.000000	0.000000	-1811.68	170.64
3	GUIDE	727321472	9.83	4113	0.073	-0.030	0.142	0.222	206.729745	-11.411859	-19.92	846.44
4	GUIDE	727327544	9.57	4110	0.064	-0.030	0.095	0.157	206.398747	-11.483258	633.77	-154.50
5	GUIDE	728236632	9.67	4100	0.130	0.211	0.110	0.176	206.842205	-12.122561	2233.56	2121.67
6	GUIDE	728245744	8.67	4108	-0.184	0.053	0.094	0.140	206.959040	-11.284446	-734.75	1442.22
7	GUIDE	727325808	9.88	4102	-0.083	-0.207	0.131	0.218	205.830262	-11.324066	811.11	-2233.34

2.4 Star Slots

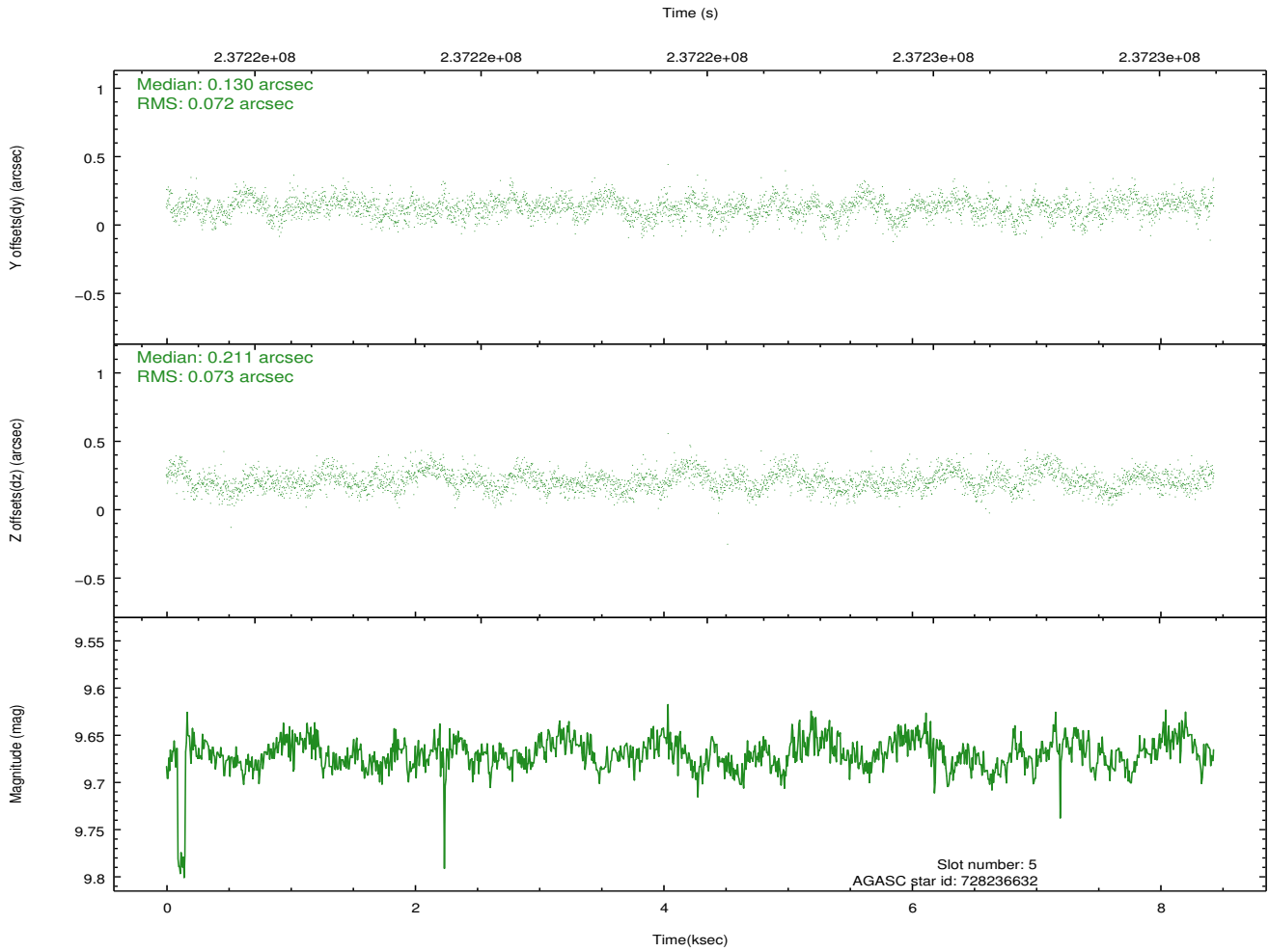
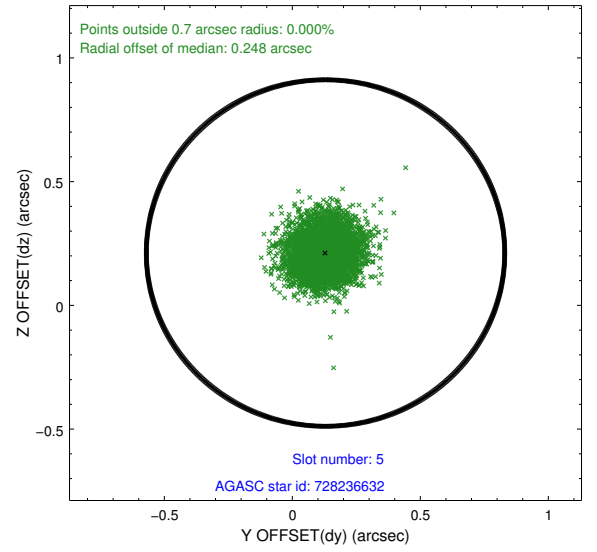
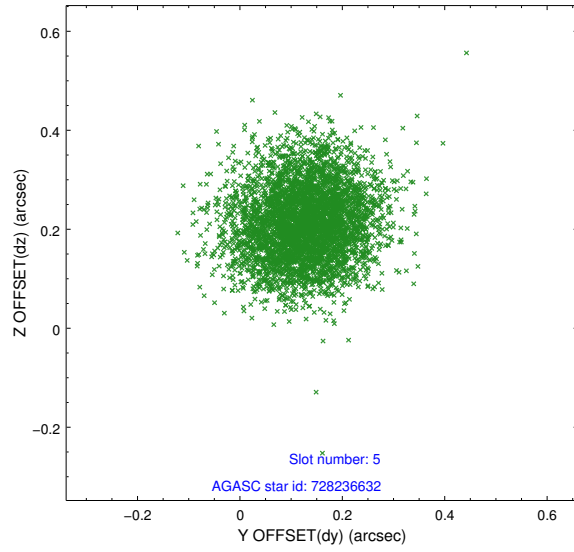
2.4.1 Slot 3



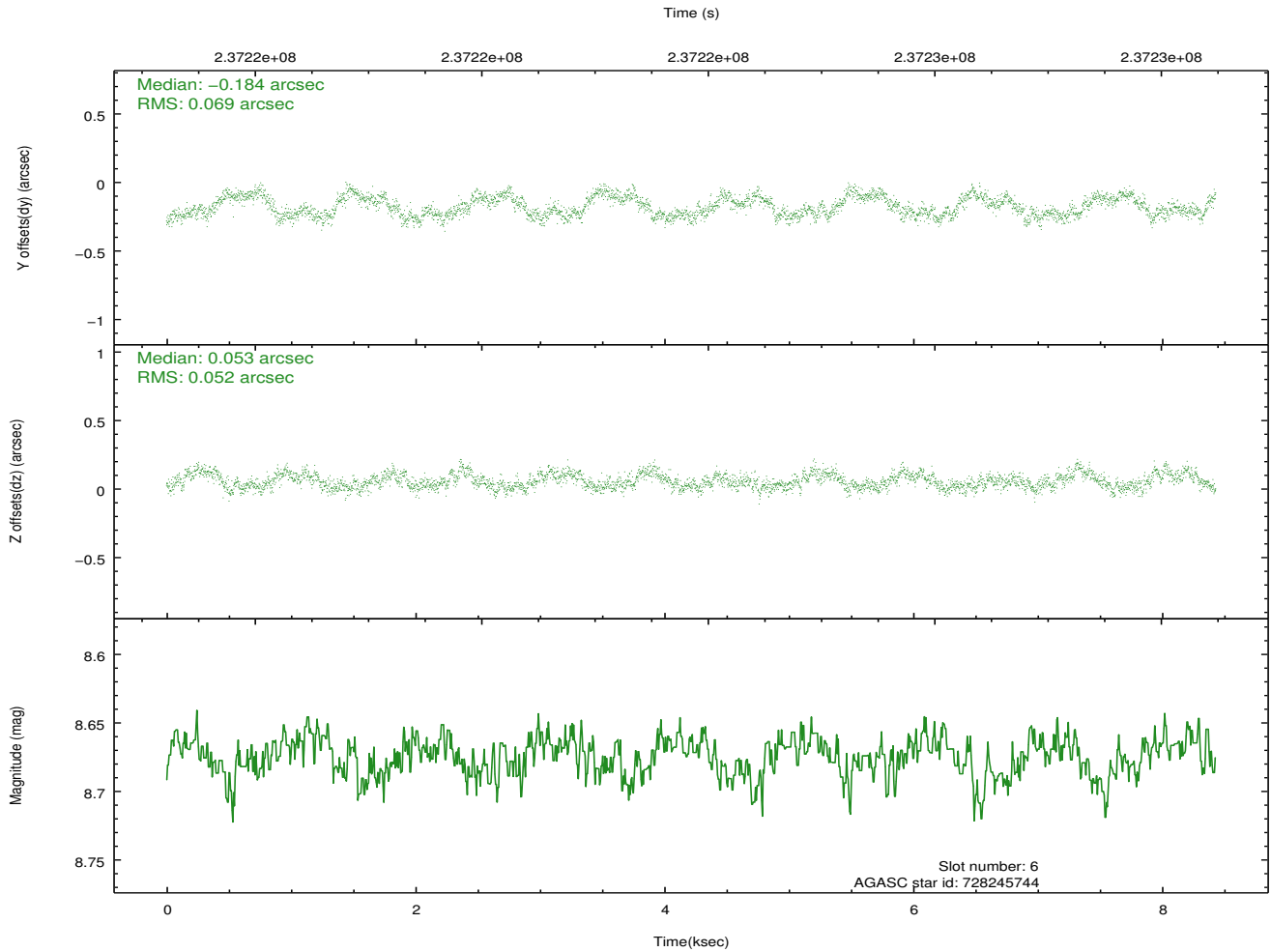
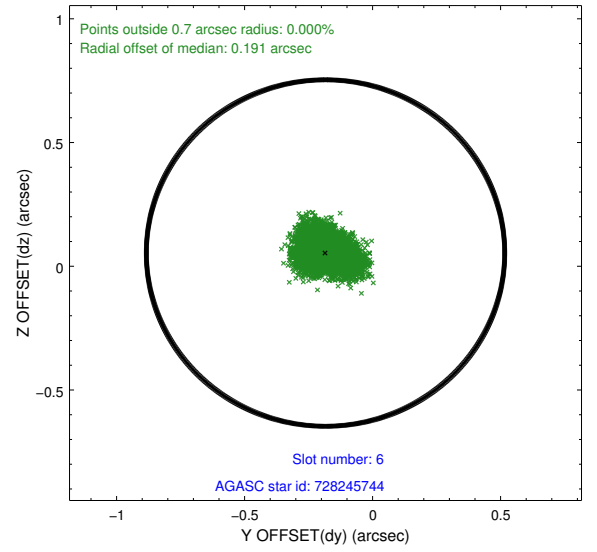
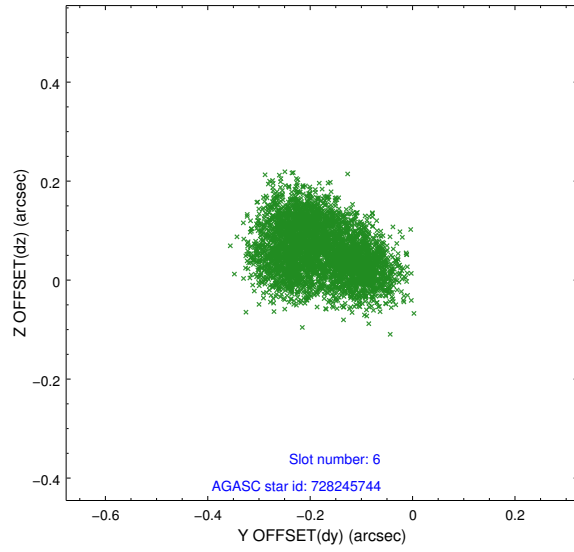
2.4.2 Slot 4



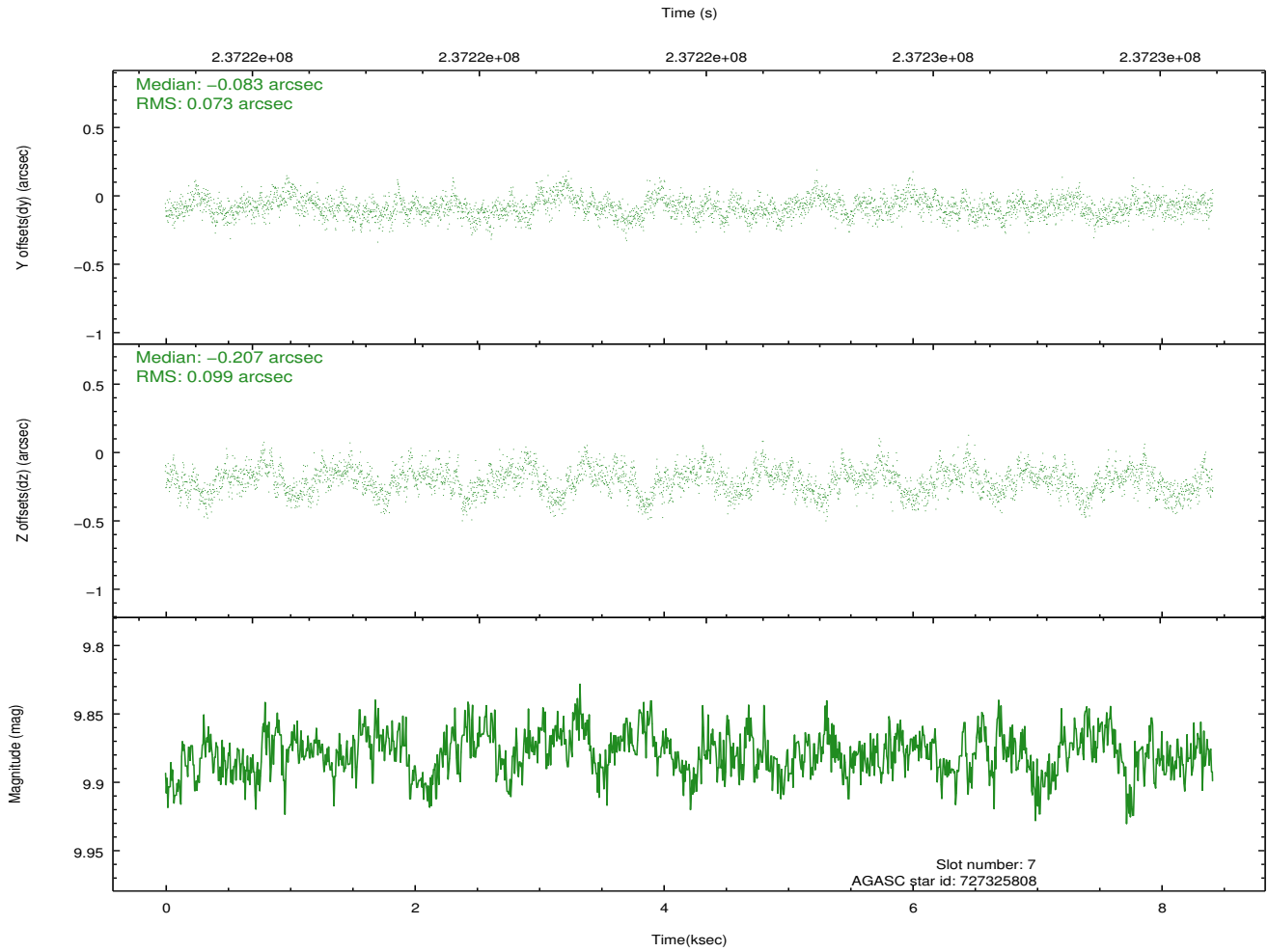
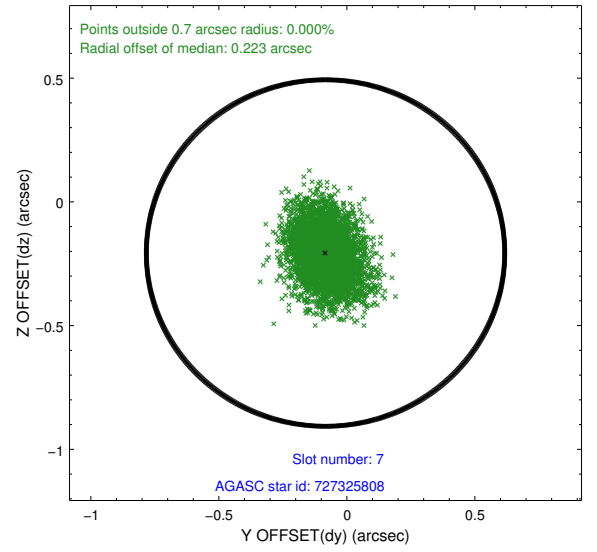
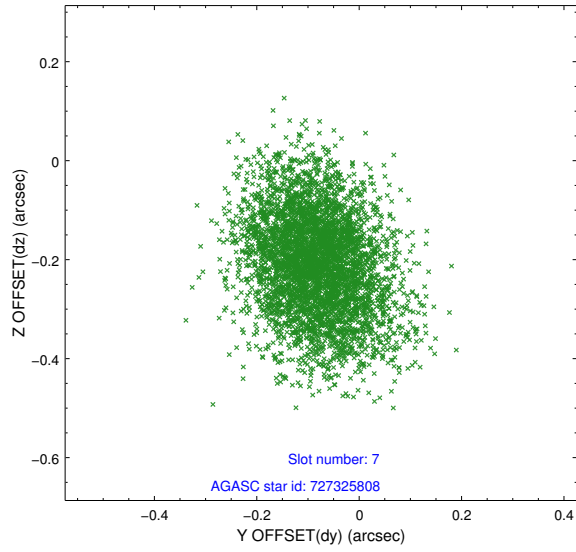
2.4.3 Slot 5



2.4.4 Slot 6

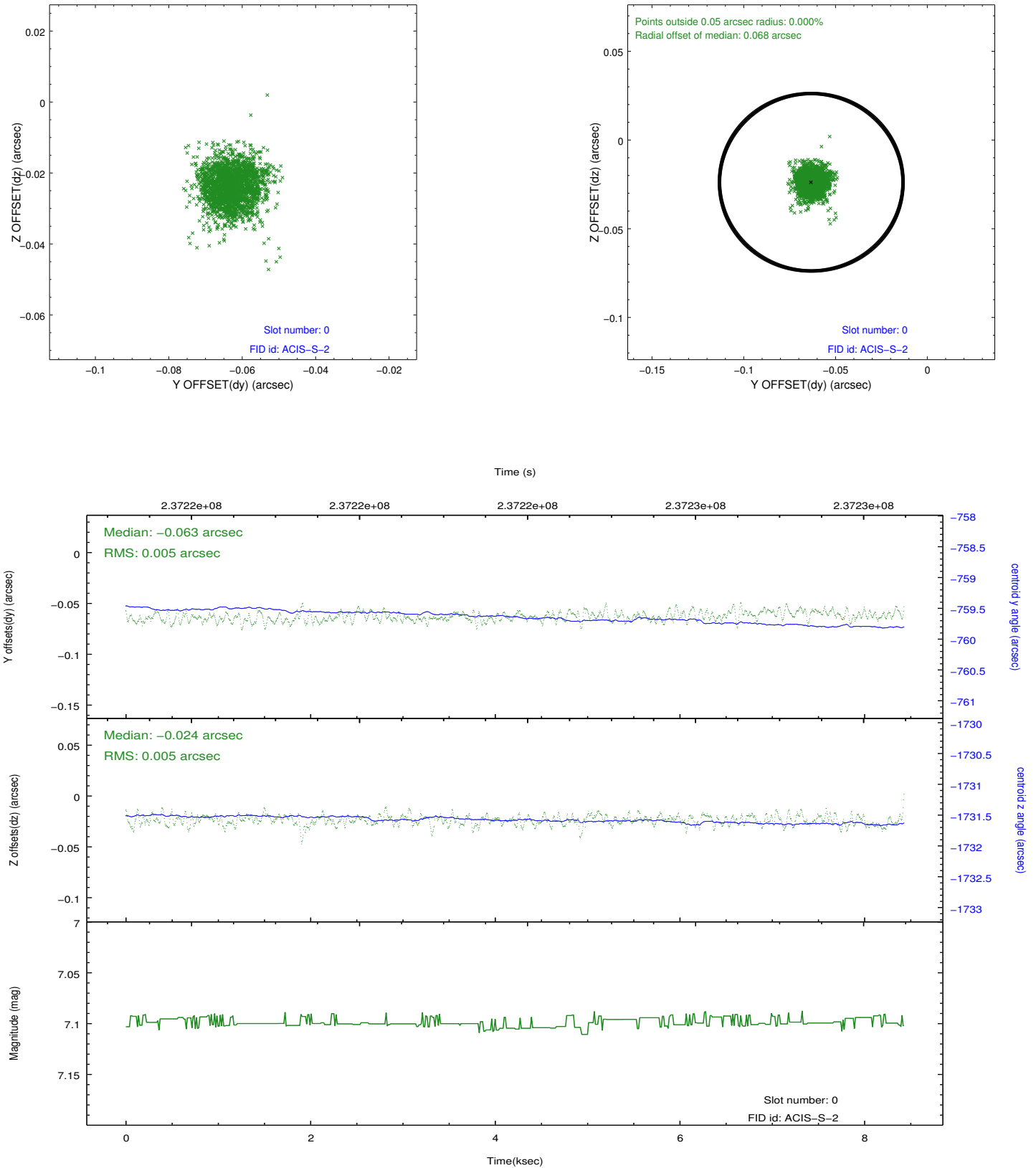


2.4.5 Slot 7

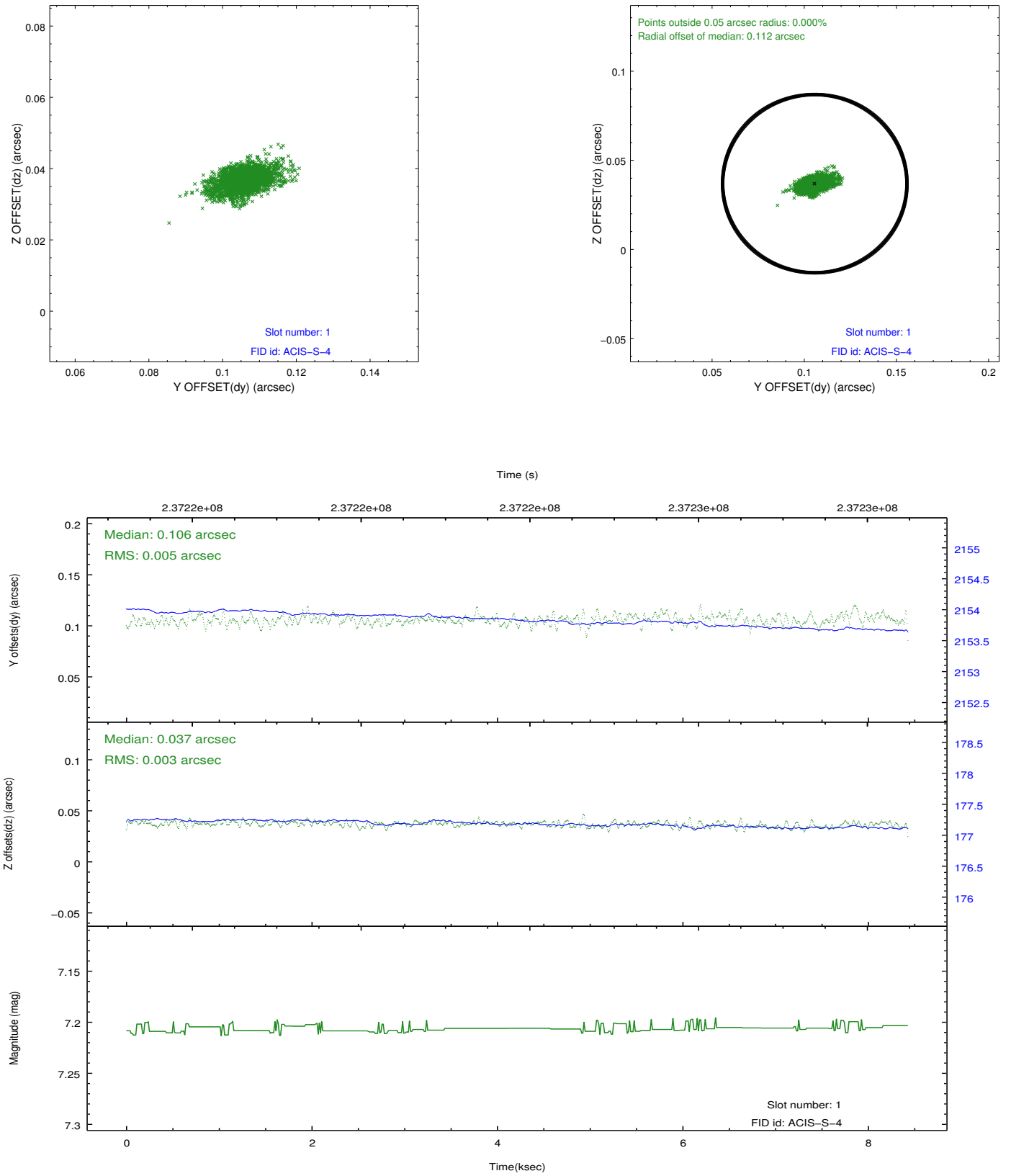


2.5 FID Slots

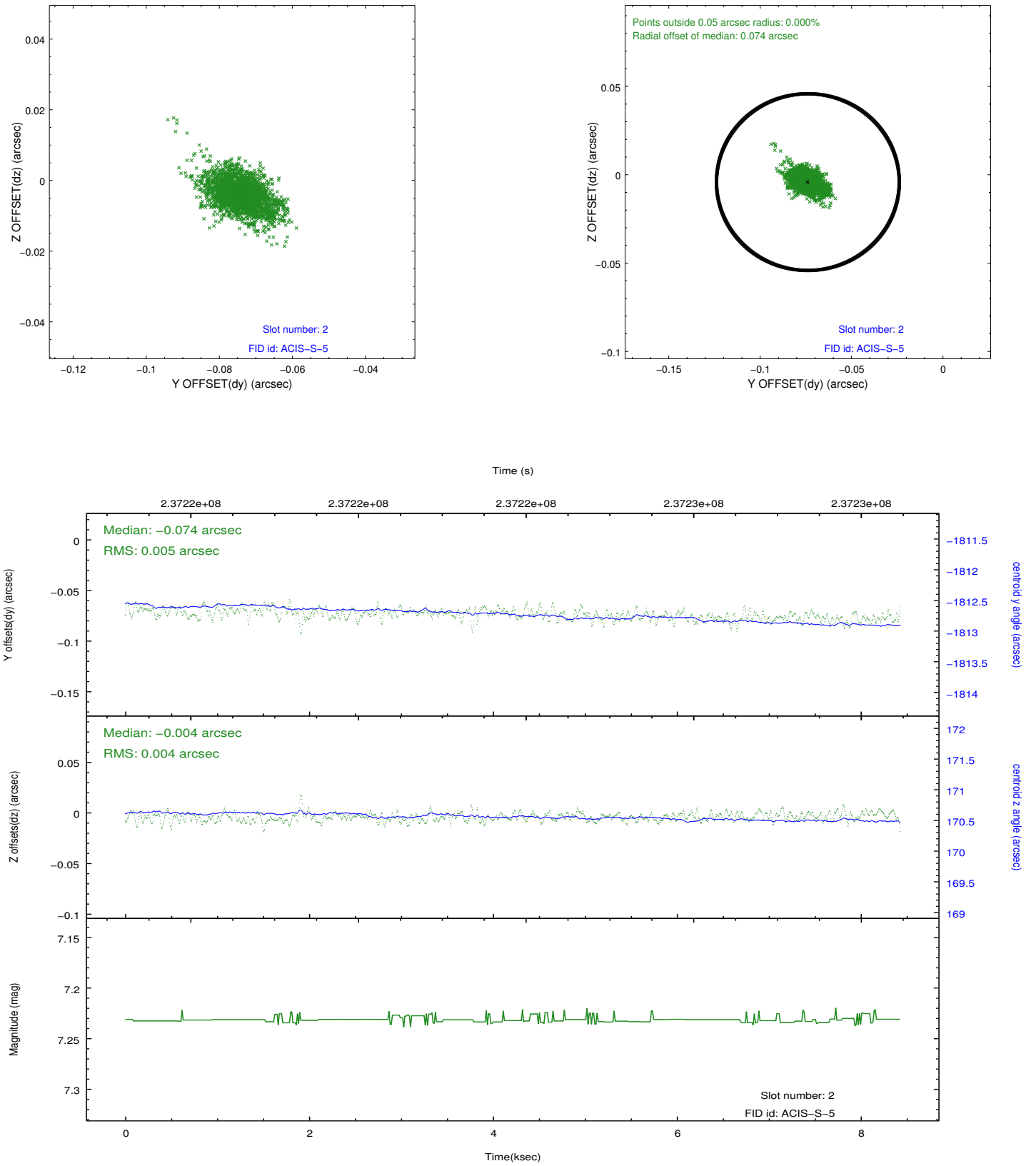
2.5.1 Slot 0



2.5.2 Slot 1



2.5.3 Slot 2



A Summary

A.1 Status

V&V Scientist	Beth Sundheim
V&V Date (YYYY-MM-DD)	2013.01.18
V&V Edition	1
V&V Disposition and Status	OK
V&V Charge Time	8.428799

A.2 Comments