

V&V Reference Report

L2 ASCDS Version : 7.6.7.1

Observation 6328 - L2 Version 002
Chandra X-Ray Center

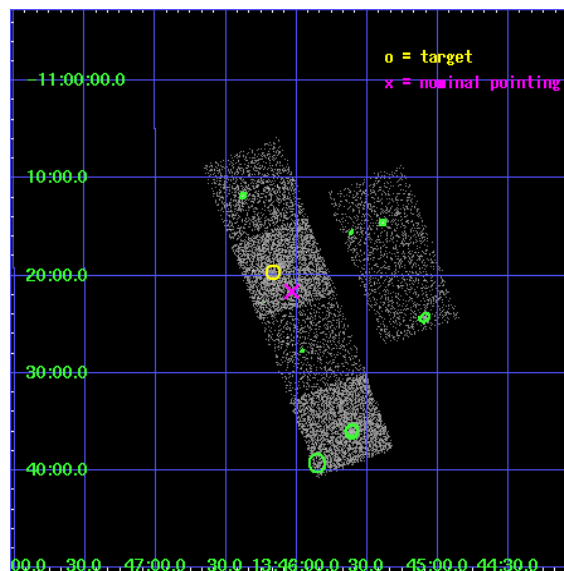
L2 Processing Date : Mar 14 2006

Contents

1	Front	2
2	OBI	3
2.1	OBI	3
2.1.1	Images	3
2.1.2	Bias	3
2.1.3	Parameters	4
2.1.4	Events	4
2.2	Compared Parameters	5
2.3	Aspect	6
2.4	Star Slots	9
2.4.1	Slot 3	9
2.4.2	Slot 4	10
2.4.3	Slot 5	11
2.4.4	Slot 6	12
2.4.5	Slot 7	13
2.5	FID Slots	14
2.5.1	Slot 0	14
2.5.2	Slot 1	15
2.5.3	Slot 2	16
3	Point Sources	17
A	Summary	18
A.1	Status	18
A.2	Comments	18

1 Front

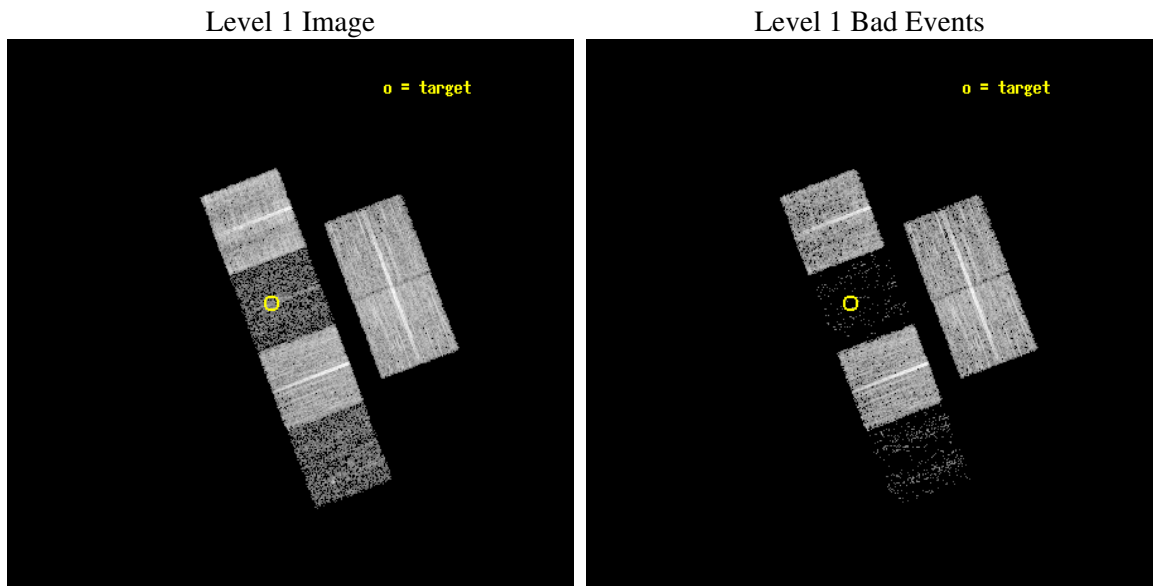
seq_num	100061
obs_id	6328
title	Comet 9P/Tempel 1 During the Deep Impact Encounter
observer	Dr. Carey Lisse
object	9P/Tempel 1
dtcycle	0
cycle	P
ra_targ	206.541263
dec_targ	-11.327092
ra_nom	206.50829293902
dec_nom	-11.360736939828
roll_nom	249.41124879974
revision	2
ontime	8428.7999686003
livetime	8322.0694281838
ontime2	8425.5590879619
ontime3	8428.7999686003
ontime5	8428.7999686003
ontime6	8428.7999686003
ontime7	8428.7999686003
ontime8	8428.7999686003
l2events	13534



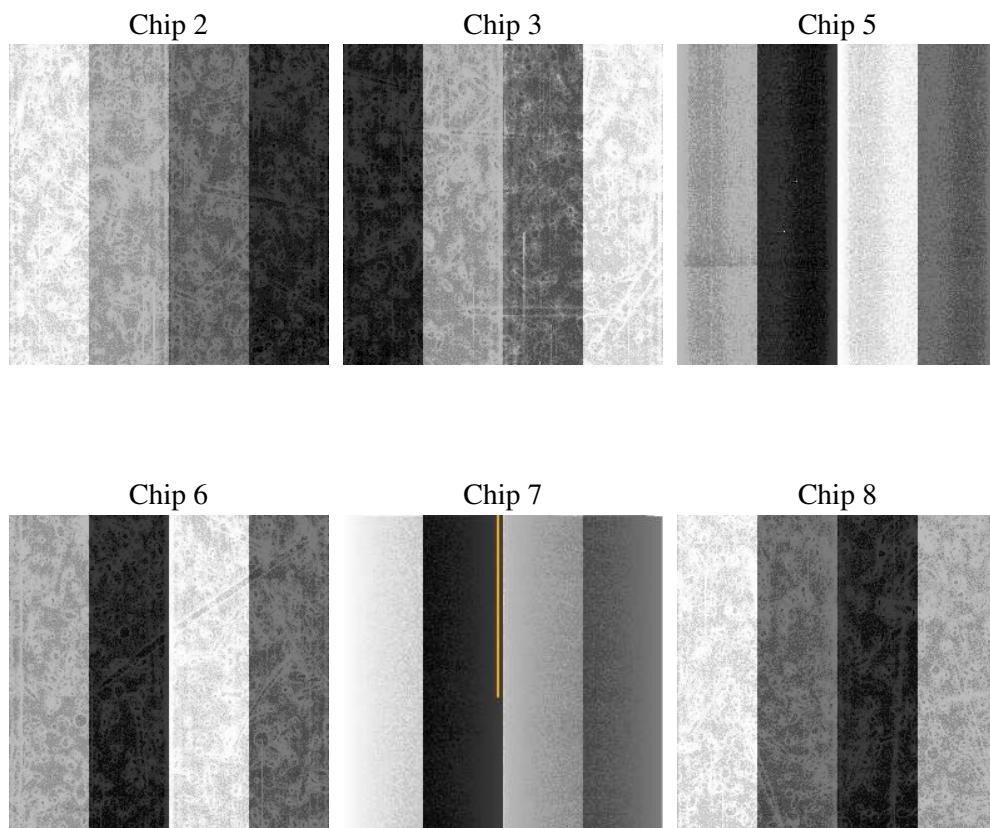
2 OBI

2.1 OBI

2.1.1 Images



2.1.2 Bias



2.1.3 Parameters

obi_num	0
ascdsver	7.6.7.1
caldsver	3.2.1
date	2006-03-14T10:44:28
revision	2

sched_exp_time	8250.000000
ontime	8760.4311205149
ontime2	8757.1902398765
ontime3	8760.4311205149
ontime5	8760.4311205149
ontime6	8760.4311205149
ontime7	8760.4311205149
ontime8	8760.4311205149
l1events	180756

2.1.4 Events

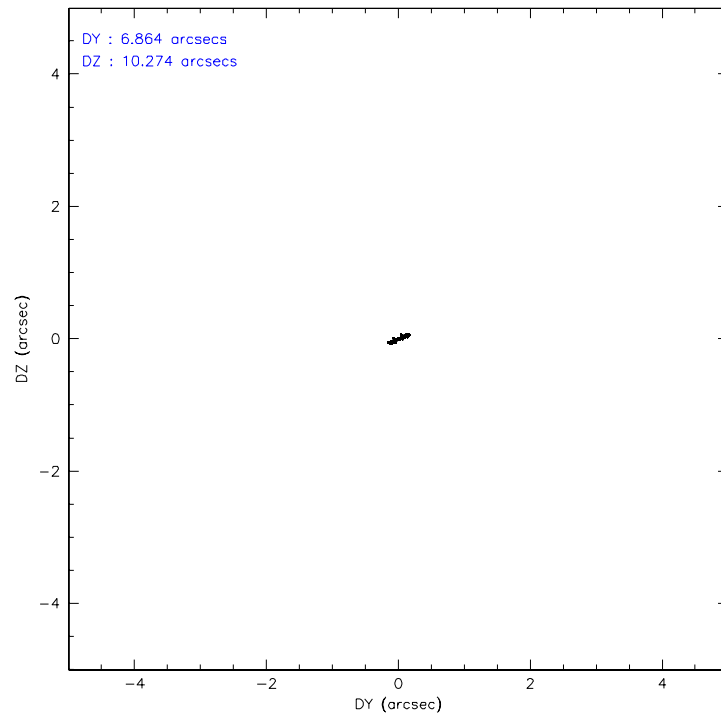
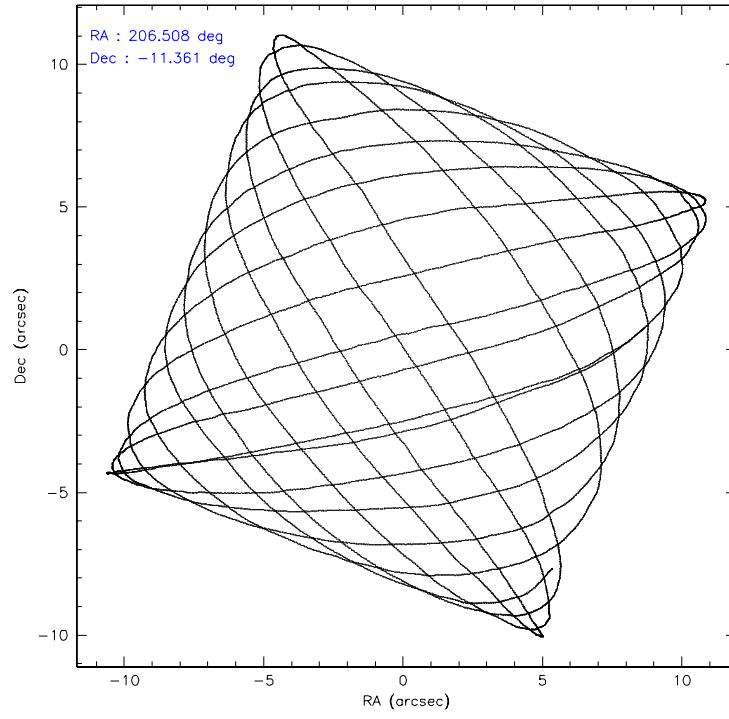
	ccd 2	ccd 3	ccd 5	ccd 6	ccd 7	ccd 8
level 1 events	45450	37370	6882	39987	6228	44839
rejected events	43585	36029	2305	38405	1331	33106
rejected %	95%	96%	33%	96%	21%	73%

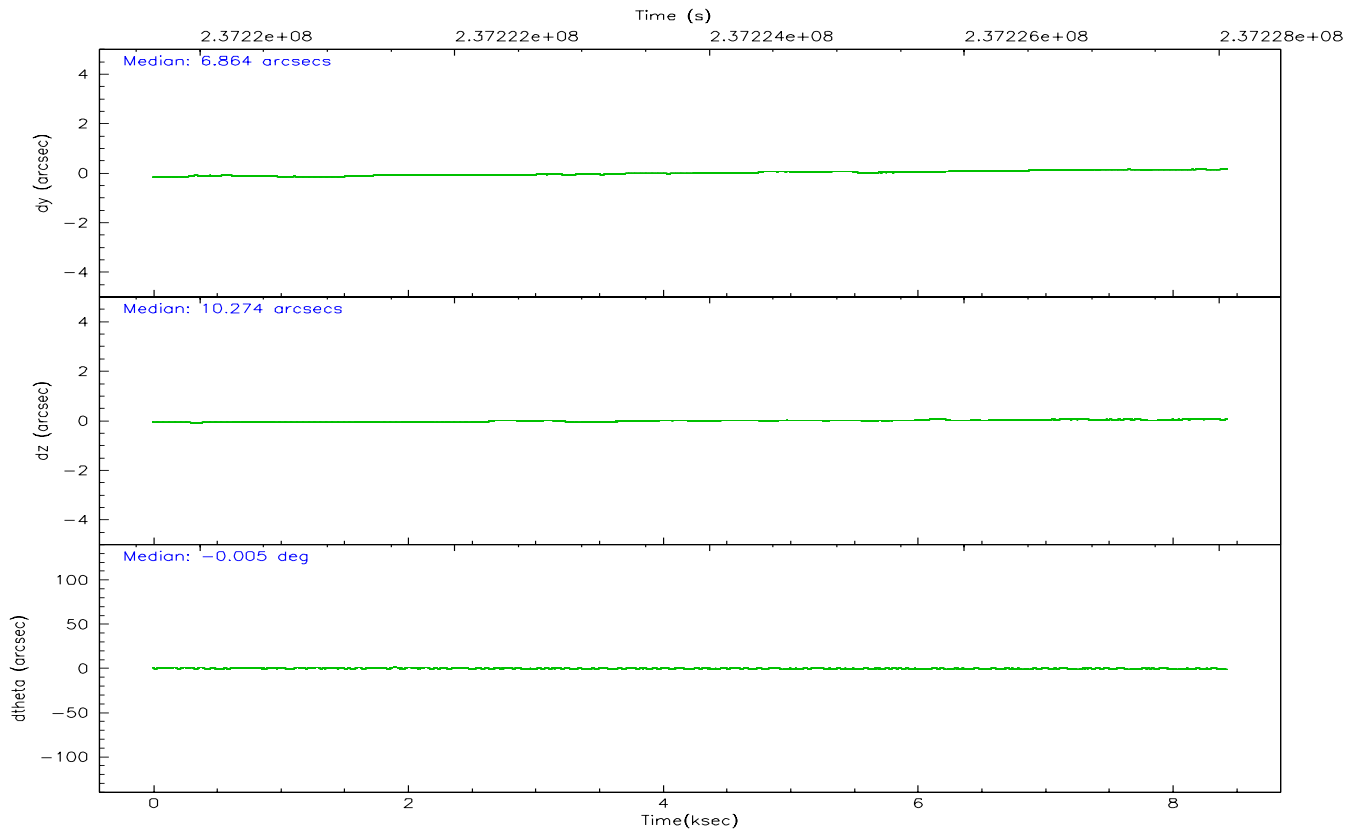
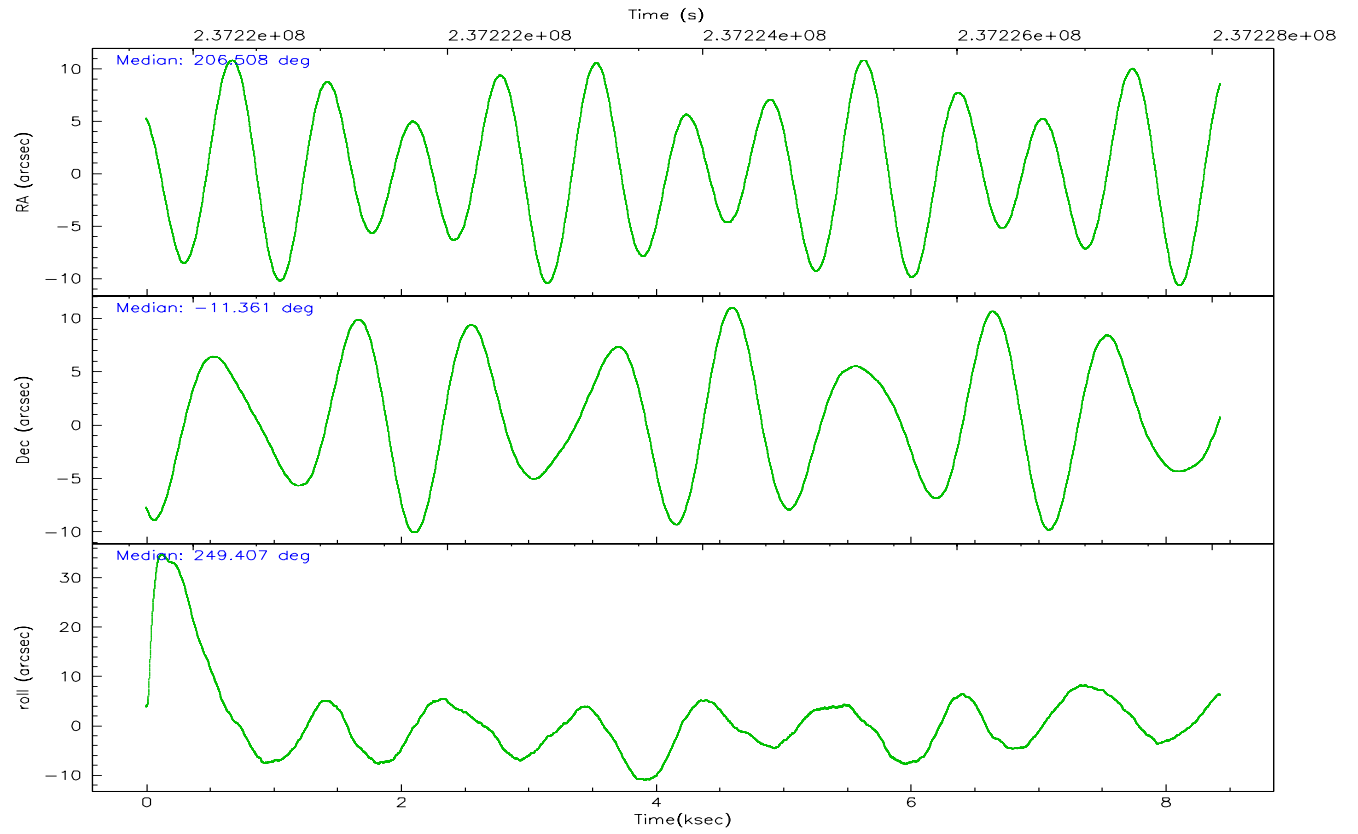
	ccd 2	ccd 3	ccd 5	ccd 6	ccd 7	ccd 8
grade 0 events	792	684	1137	786	1500	3640
	1%	1%	16%	1%	24%	8%
grade 1 events	8	13	24	9	16	38
	0%	0%	0%	0%	0%	0%
grade 2 events	438	188	1887	296	1590	2564
	0%	0%	27%	0%	25%	5%
grade 3 events	254	216	587	214	713	1534
	0%	0%	8%	0%	11%	3%
grade 4 events	269	208	542	212	656	1402
	0%	0%	7%	0%	10%	3%
grade 5 events	59	37	289	26	147	237
	0%	0%	4%	0%	2%	0%
grade 6 events	175	101	614	126	637	2987
	0%	0%	8%	0%	10%	6%
grade 7 events	43455	35923	1802	38318	969	32437
	95%	96%	26%	95%	15%	72%

2.2 Compared Parameters

Parameter	Planned	Actual	Parameter	Planned	Actual
Instrument	ACIS	ACIS	Obspar format version number	6	6
Detector	ACIS-235678	ACIS-235678	Obspar file type	PREDICTED	ACTUAL
Grating	NONE	NONE	Obspar update status	NONE	UPDATED
Data mode	VFAINT	VFAINT	On-chip summing requested	N	N
Observation mode	POINTING	POINTING	Subarray requested	NONE	NONE
Pointing RA	206.503398	206.5082929390215	Alternating exposures requested	N	N
Pointing Dec	-11.333889	-11.36073693982816	Primary exposure time	0.000000	3.2
Pointing Roll	249.253658	249.4112487997376			
SIM focus pos (mm)	-0.684267	-0.6828225247311905			
SIM defocus (mm)	0	0.001444936568705701			
SIM translation stage pos (mm)	-190.132523	-190.1400660498719			
SIM translation stage offset (mm)	0	0.00754346686406393			
Observation start time	237219807.184000	237219431.86447			
Observation start date	2005-07-08T14:22:23	2005-07-08T14:17:11			
Observation end time	237228057.184000	237228191.51488			
Observation end date	2005-07-08T16:39:53	2005-07-08T16:43:11			
Read mode	TIMED	TIMED			

2.3 Aspect



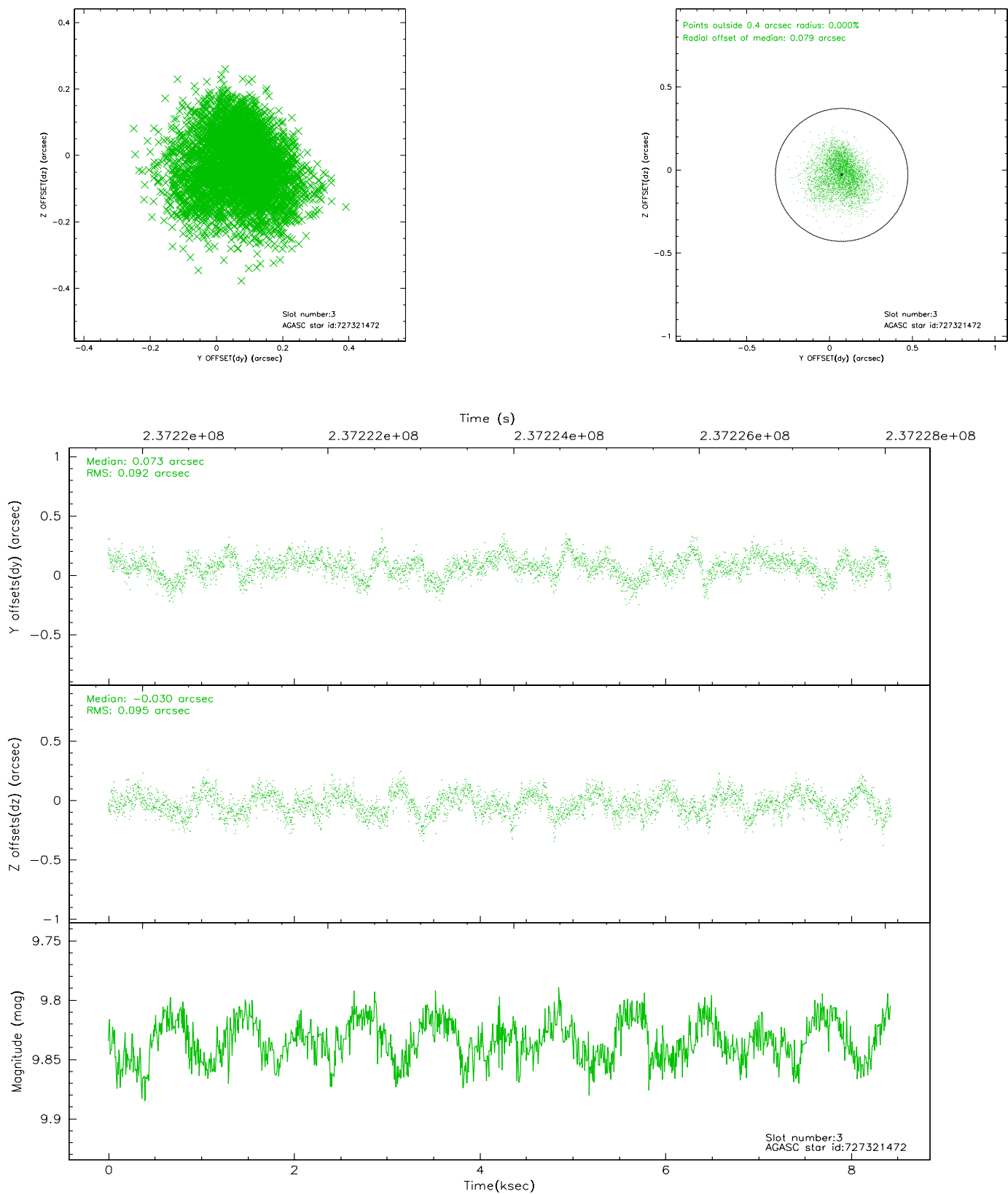


Slot Statistics

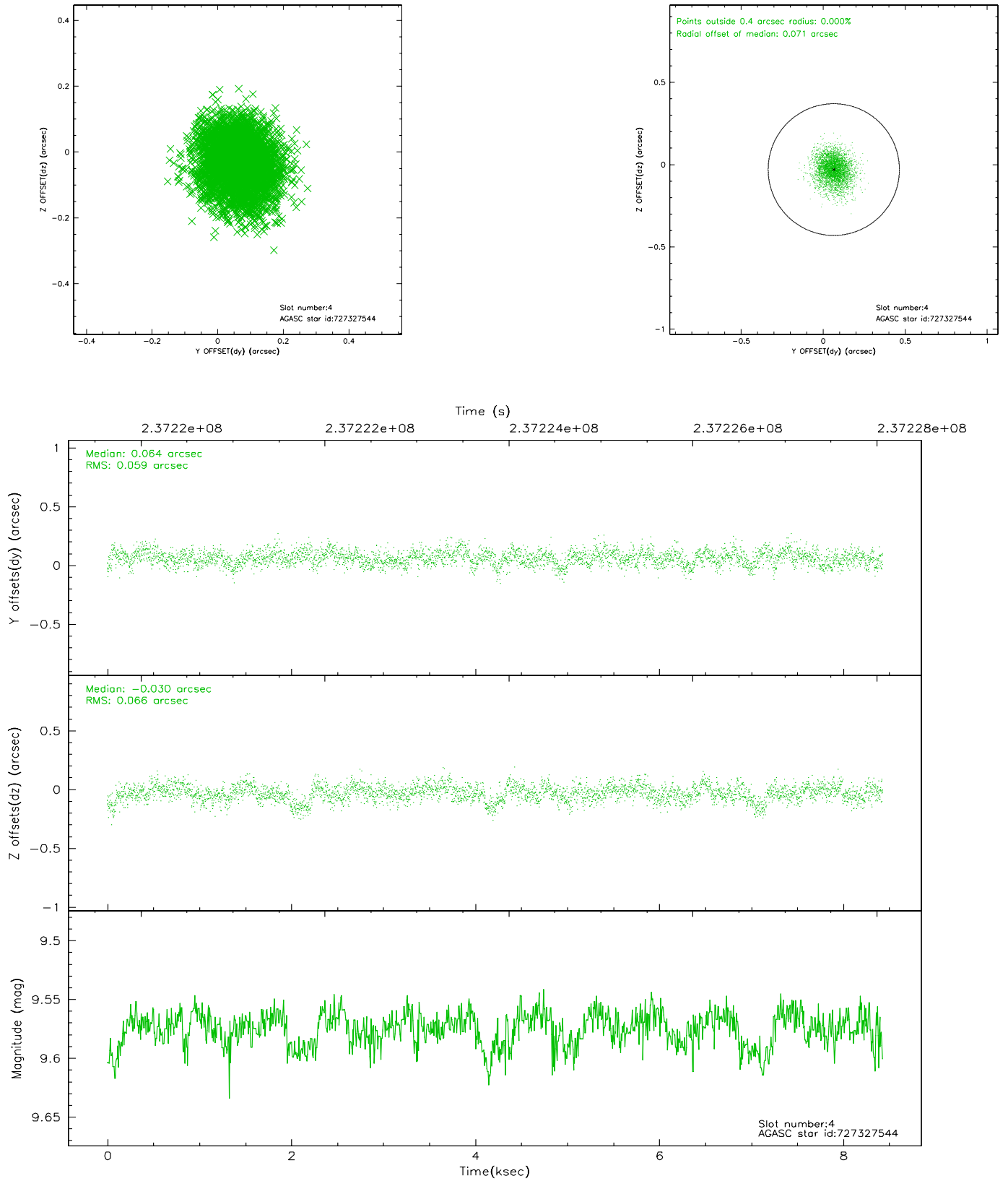
slot	status	id	mag	n_pts	med_dy	med_dz	dr1	dr2	ra	dec	mean_y	mean_z
0	FID	ACIS-S-2	7.10	2056	-0.052	-0.001	0.007	0.011	0.000000	0.000000	-759.63	-1731.54
1	FID	ACIS-S-4	7.21	2056	0.064	0.025	0.005	0.008	0.000000	0.000000	2153.43	176.35
2	FID	ACIS-S-5	7.23	2057	-0.043	-0.016	0.006	0.011	0.000000	0.000000	-1811.65	170.65
3	GUIDE	727321472	9.83	4113	0.073	-0.030	0.142	0.222	206.729745	-11.411859	-19.92	846.44
4	GUIDE	727327544	9.57	4110	0.064	-0.030	0.095	0.157	206.398747	-11.483258	633.77	-154.50
5	GUIDE	728236632	9.67	4100	0.130	0.211	0.110	0.176	206.842205	-12.122561	2233.56	2121.67
6	GUIDE	728245744	8.67	4108	-0.184	0.053	0.094	0.140	206.959040	-11.284446	-734.75	1442.22
7	GUIDE	727325808	9.88	4102	-0.083	-0.207	0.131	0.218	205.830262	-11.324066	811.11	-2233.34

2.4 Star Slots

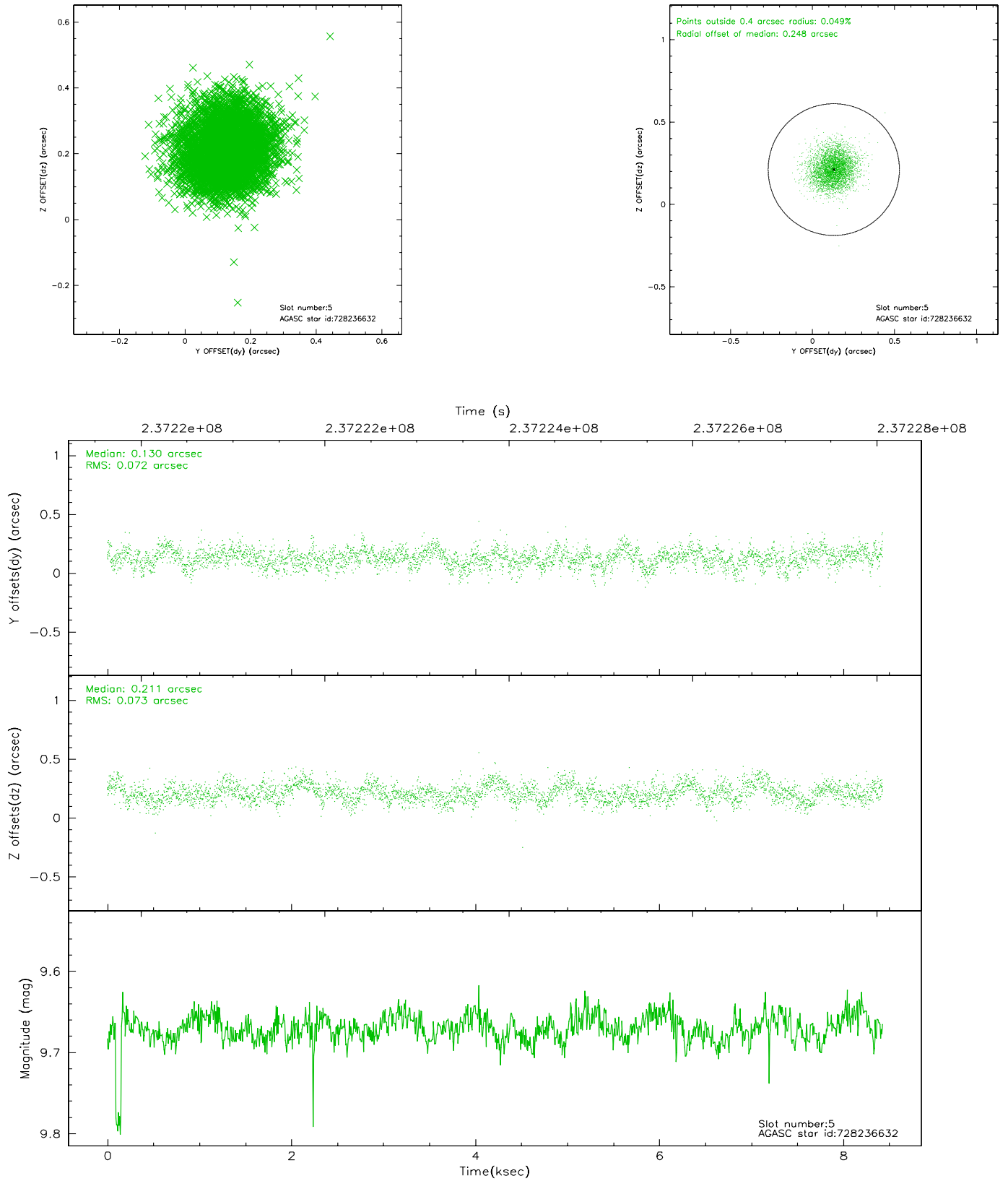
2.4.1 Slot 3



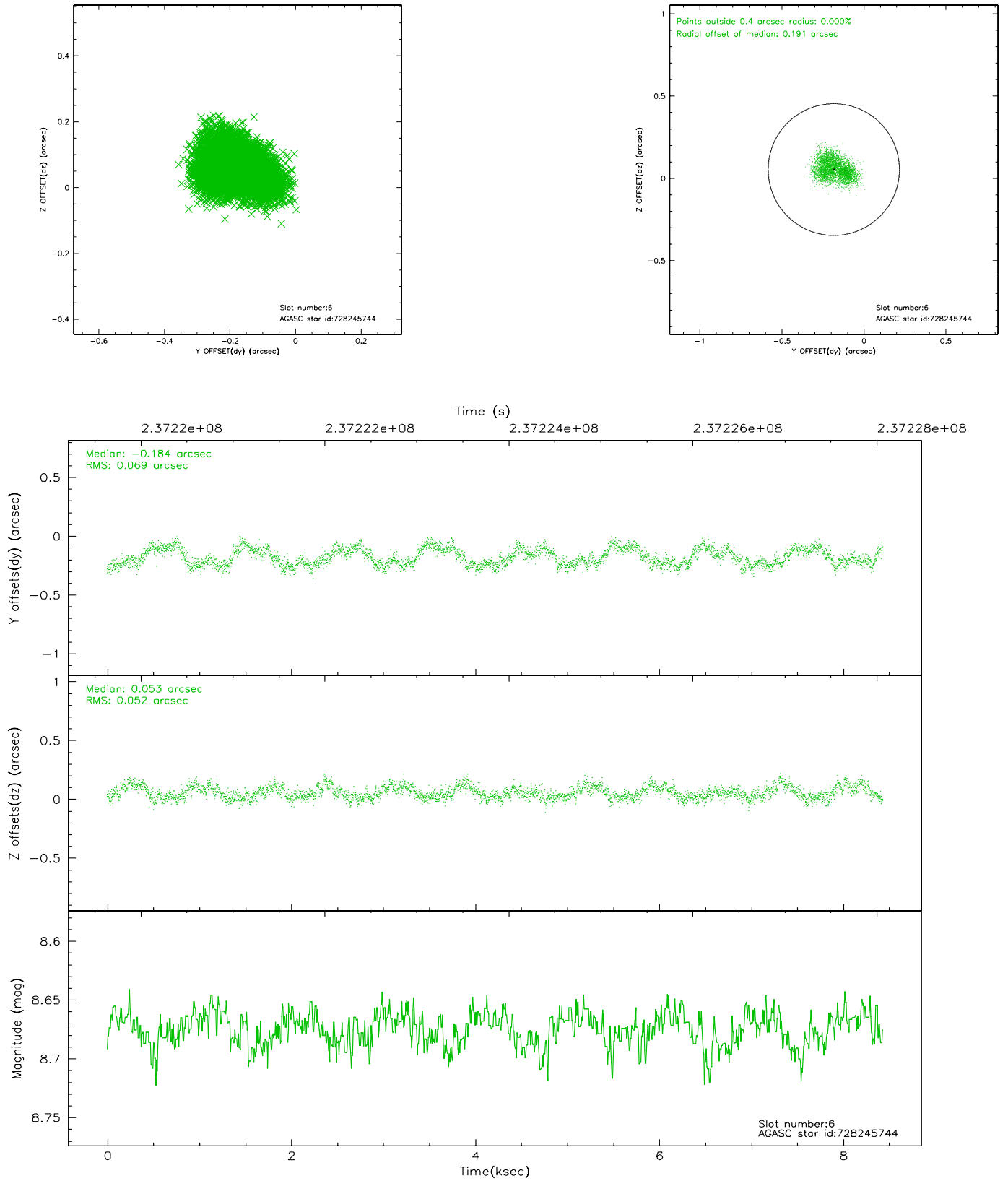
2.4.2 Slot 4



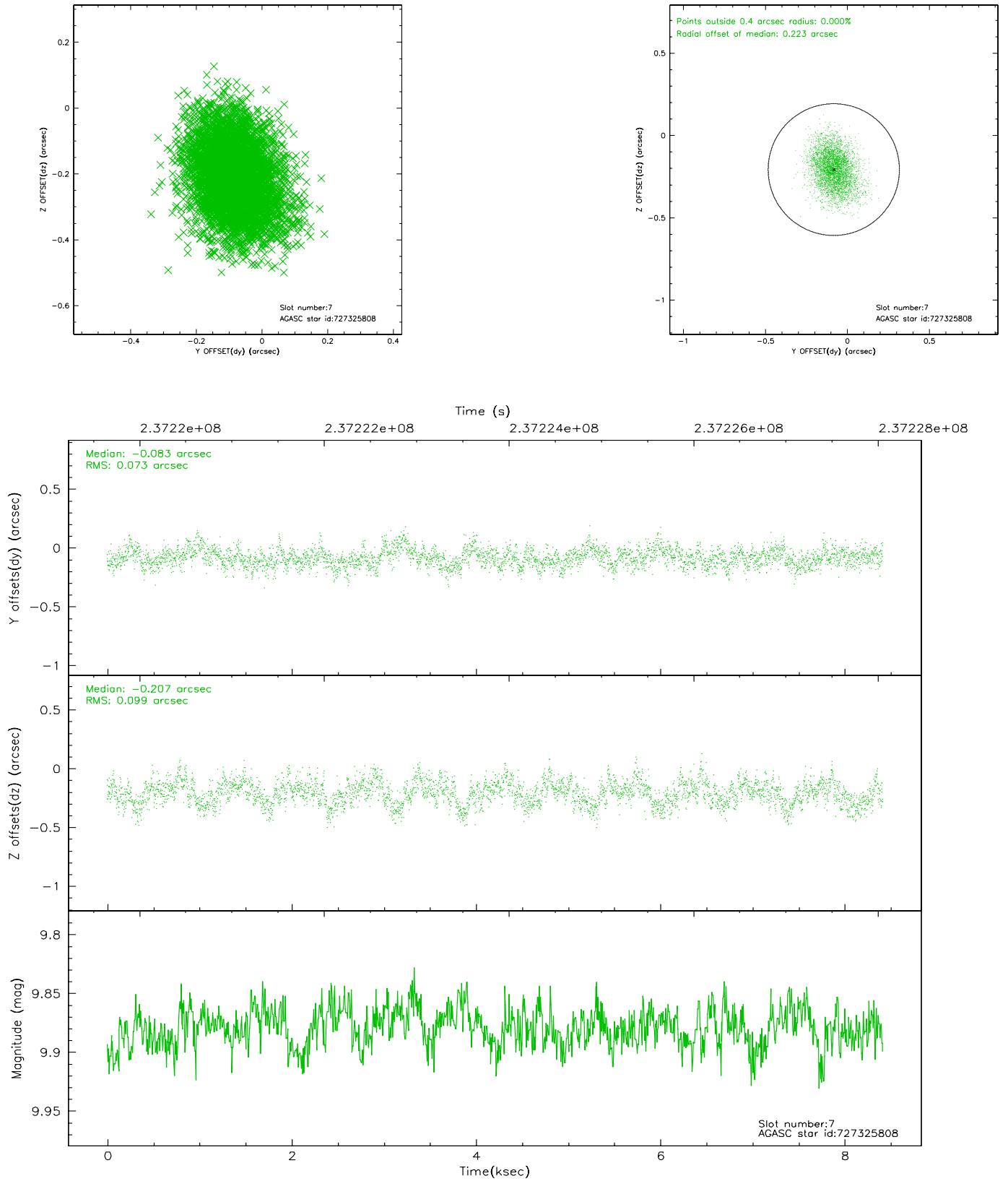
2.4.3 Slot 5



2.4.4 Slot 6

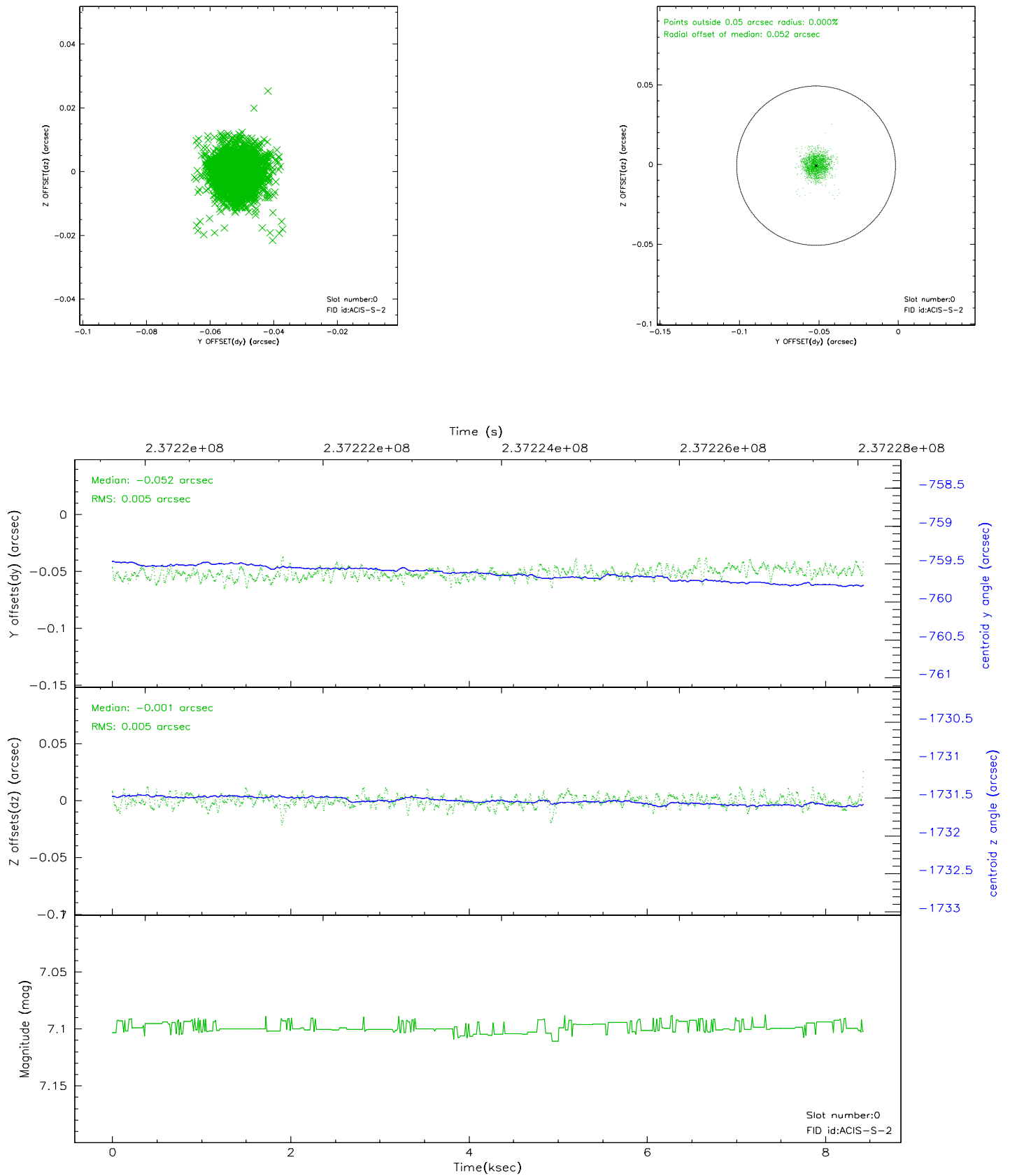


2.4.5 Slot 7

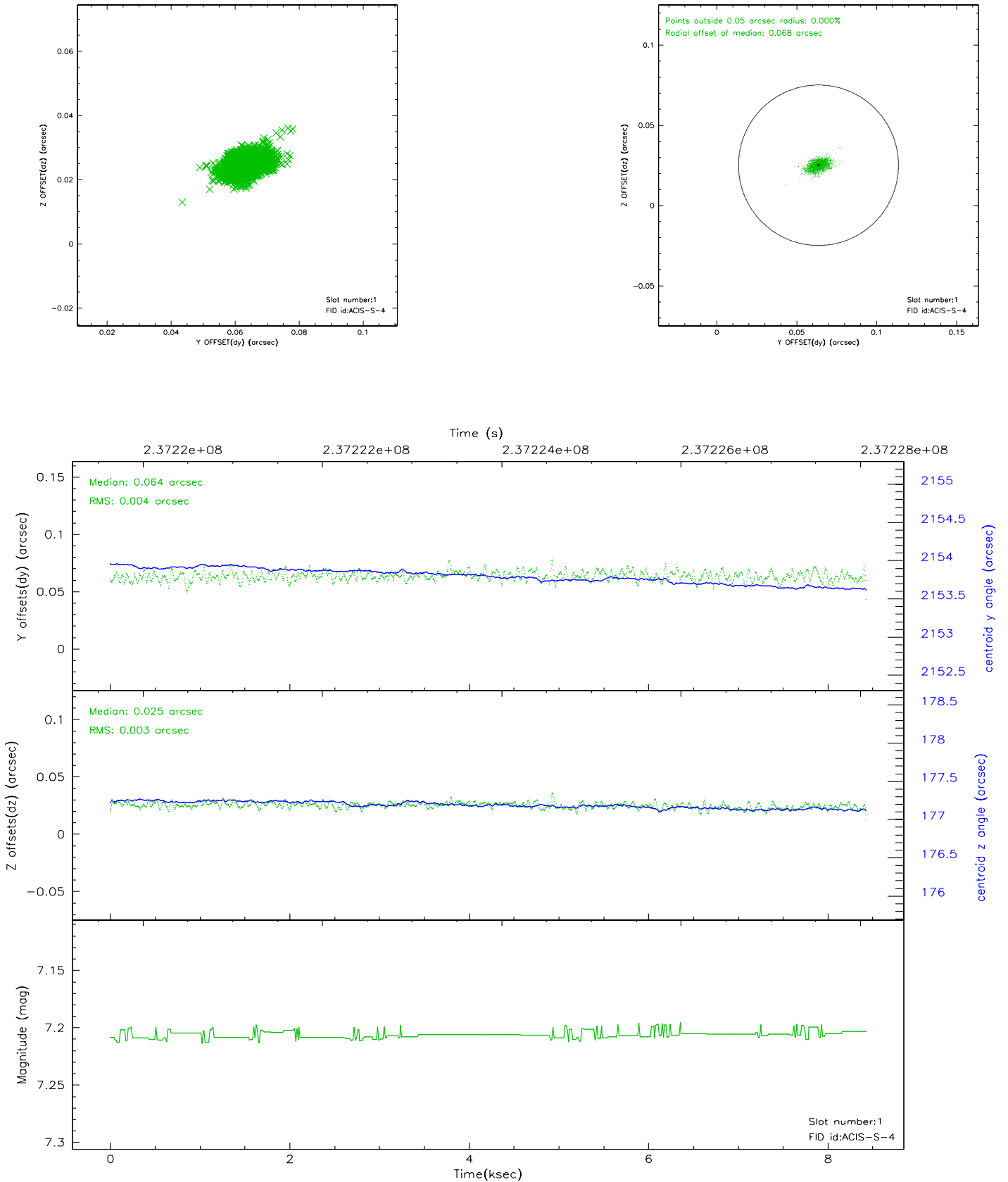


2.5 FID Slots

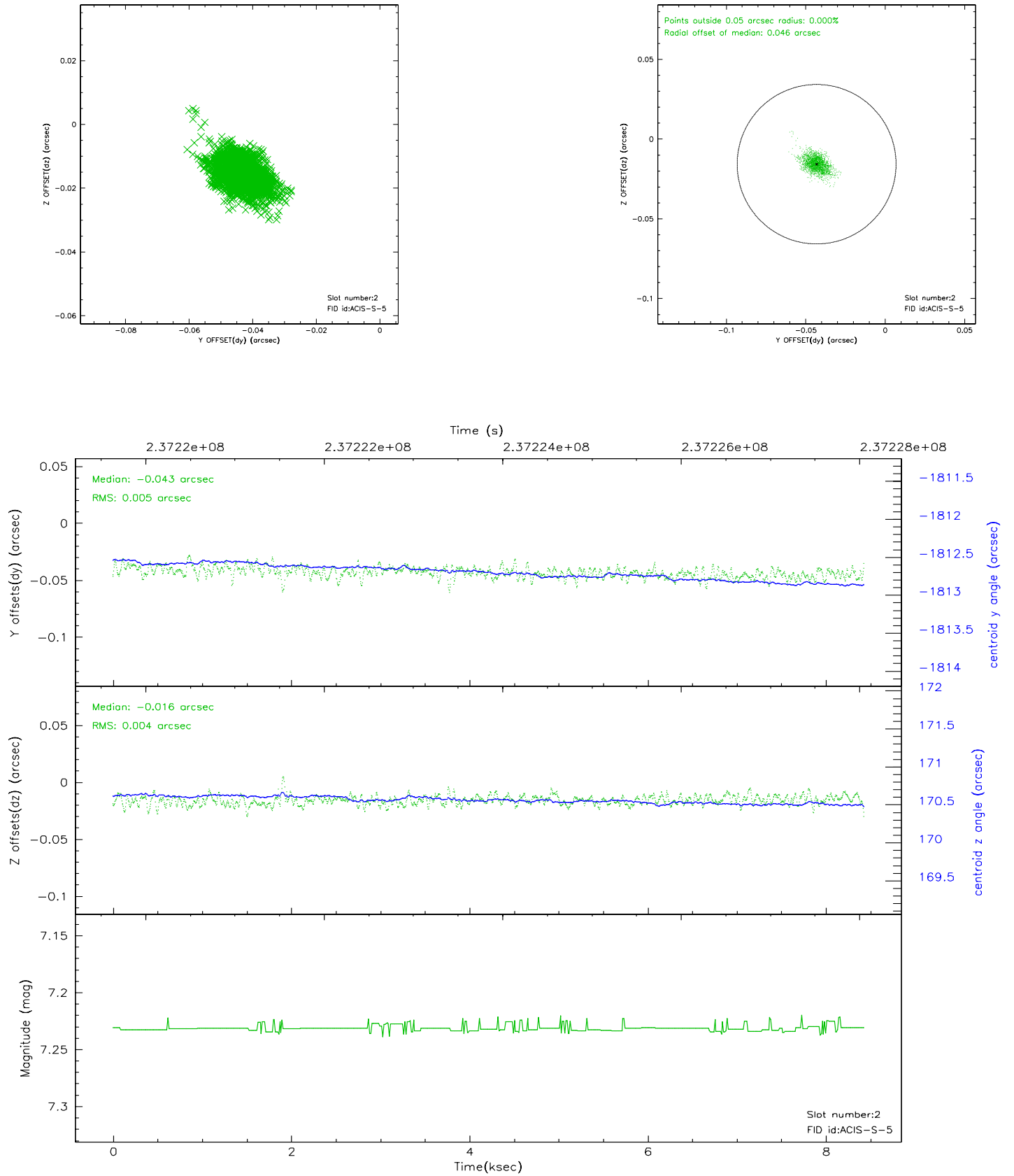
2.5.1 Slot 0



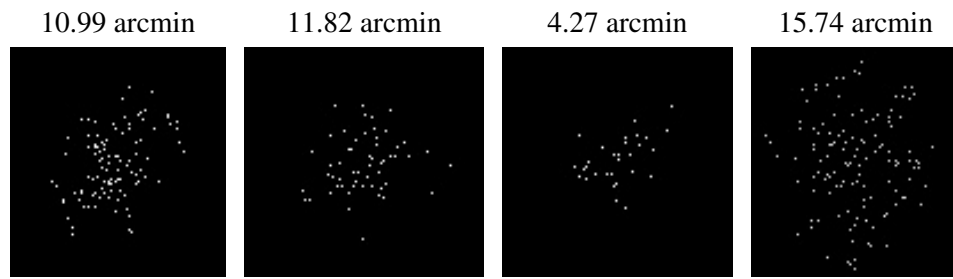
2.5.2 Slot 1



2.5.3 Slot 2



3 Point Sources



A Summary

A.1 Status

V&V Scientist	Jen Lauer
V&V Date (YYYY-MM-DD)	2006.03.14
V&V Edition	1
V&V Disposition and Status	OK
V&V Charge Time	8.428799

A.2 Comments