

# V&V Reference Report

## L2 ASCDS Version : 7.6.7.1

Observation 6326 - L2 Version 002  
Chandra X-Ray Center

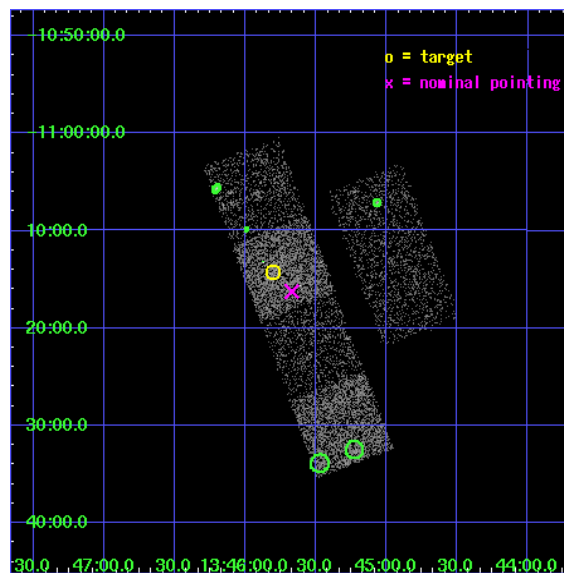
L2 Processing Date : Mar 14 2006

## Contents

<b>1</b>	<b>Front</b>	<b>2</b>
<b>2</b>	<b>OBI</b>	<b>3</b>
2.1	OBI . . . . .	3
2.1.1	Images . . . . .	3
2.1.2	Bias . . . . .	3
2.1.3	Parameters . . . . .	4
2.1.4	Events . . . . .	4
2.2	Compared Parameters . . . . .	5
2.3	Aspect . . . . .	6
2.4	Star Slots . . . . .	9
2.4.1	Slot 3 . . . . .	9
2.4.2	Slot 4 . . . . .	10
2.4.3	Slot 5 . . . . .	11
2.4.4	Slot 6 . . . . .	12
2.4.5	Slot 7 . . . . .	13
2.5	FID Slots . . . . .	14
2.5.1	Slot 0 . . . . .	14
2.5.2	Slot 1 . . . . .	15
2.5.3	Slot 2 . . . . .	16
<b>3</b>	<b>Point Sources</b>	<b>17</b>
<b>A</b>	<b>Summary</b>	<b>18</b>
A.1	Status . . . . .	18
A.2	Comments . . . . .	18

# 1 Front

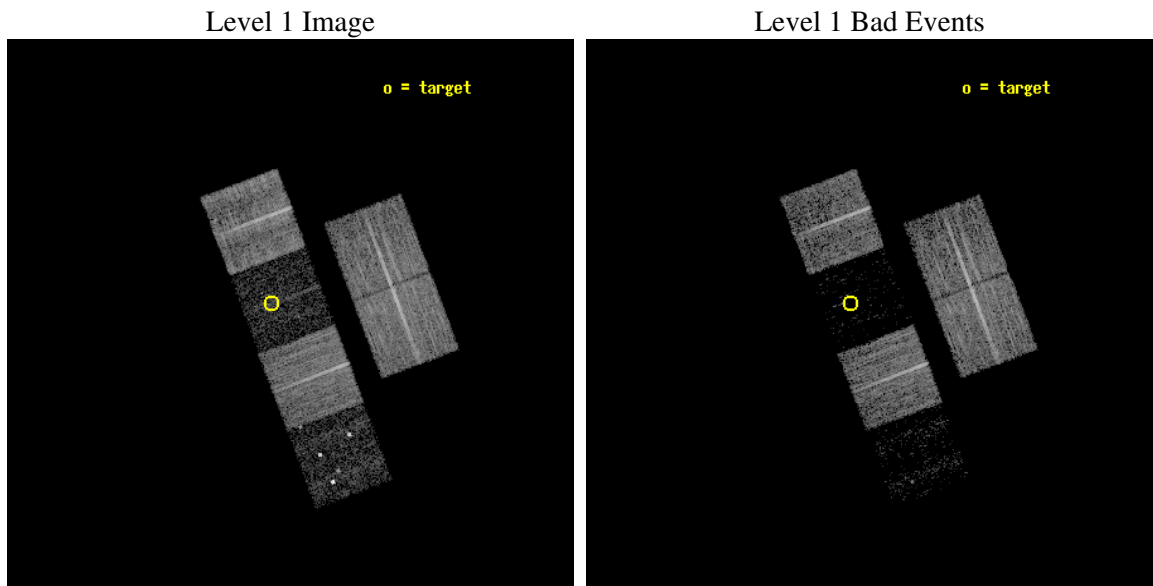
seq_num	100061
obs_id	6326
title	Comet 9P/Tempel 1 During the Deep Impact Encounter
observer	Dr. Carey Lisse
object	9P/Tempel 1
dtcycle	0
cycle	P
ra_targ	206.450563
dec_targ	-11.237417
ra_nom	206.41768370319
dec_nom	-11.270930476024
roll_nom	249.37180071246
revision	2
ontime	8211.1999694109
livetime	8107.2248112072
ontime2	8211.1999694109
ontime3	8211.1999694109
ontime5	8211.1999694109
ontime6	8211.1999694109
ontime7	8211.1999694109
ontime8	8211.1999694109
l2events	12810



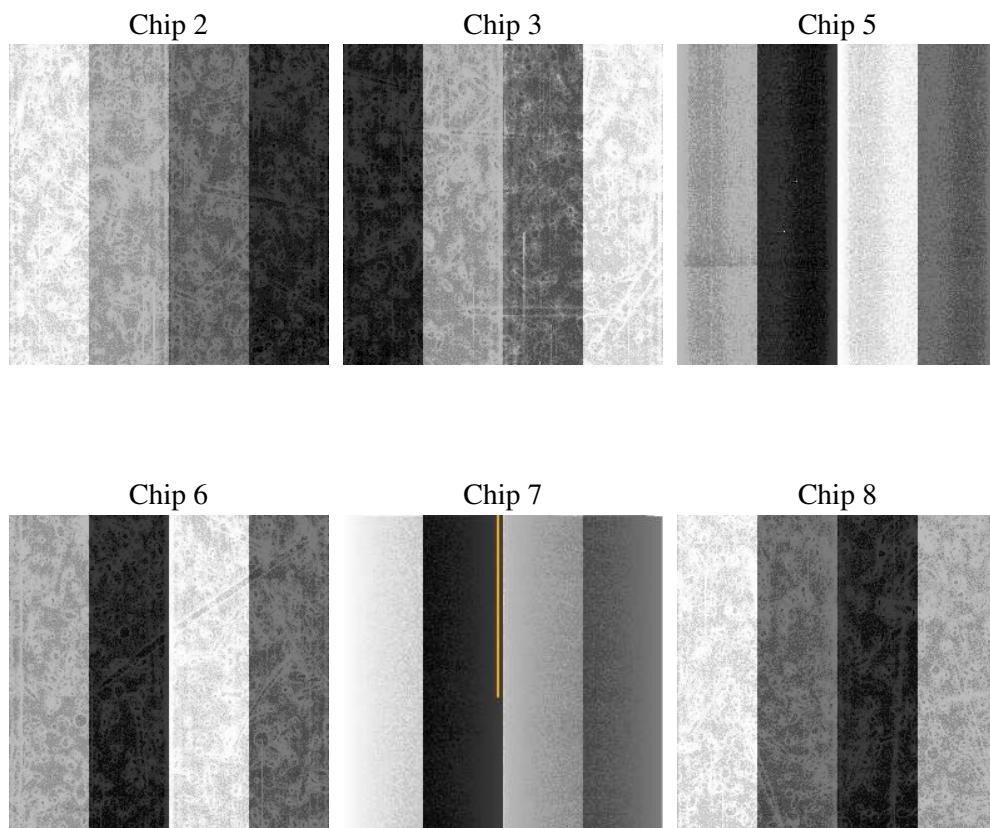
## 2 OBI

### 2.1 OBI

#### 2.1.1 Images



#### 2.1.2 Bias



### 2.1.3 Parameters

obi_num	0
ascdsver	7.6.7.1
caldsver	3.2.1
date	2006-03-14T09:55:31
revision	2

sched_exp_time	8250.000000
ontime	8345.5925918818
ontime2	8345.5925918818
ontime3	8345.5925918818
ontime5	8345.5925918818
ontime6	8345.5925918818
ontime7	8345.5925918818
ontime8	8345.5925918818
l1events	176770

### 2.1.4 Events

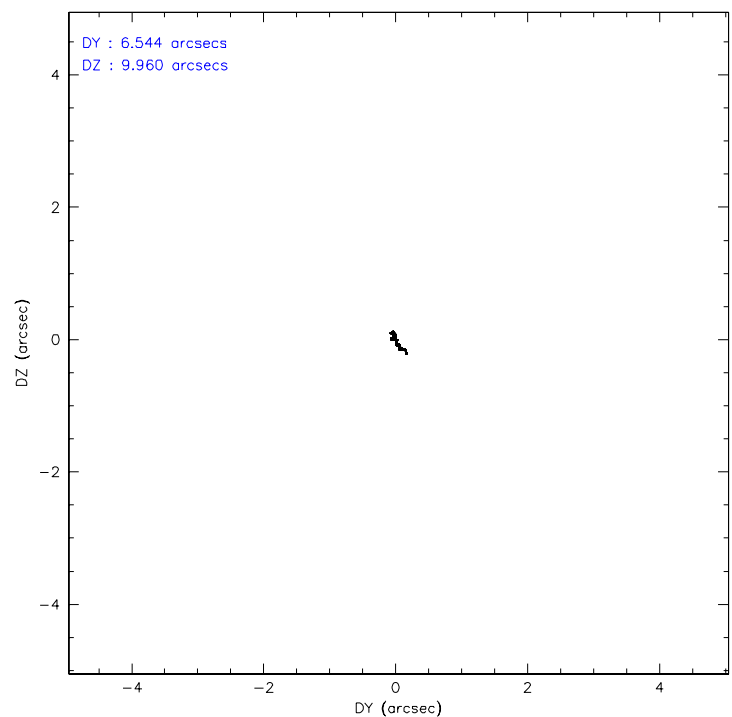
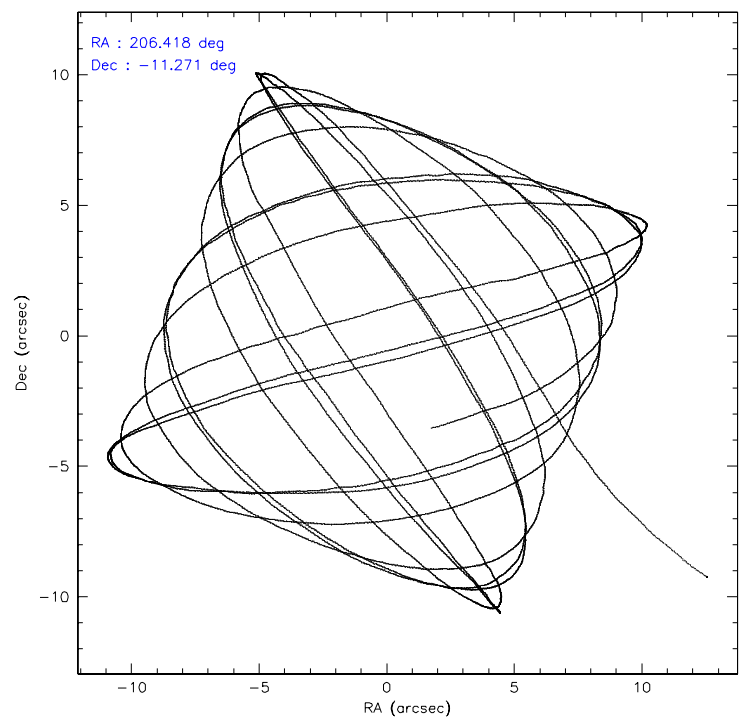
	ccd 2	ccd 3	ccd 5	ccd 6	ccd 7	ccd 8
level 1 events	43771	36804	10619	37330	5896	42350
rejected events	42011	35452	2253	35662	1171	32312
rejected %	95%	96%	21%	95%	19%	76%

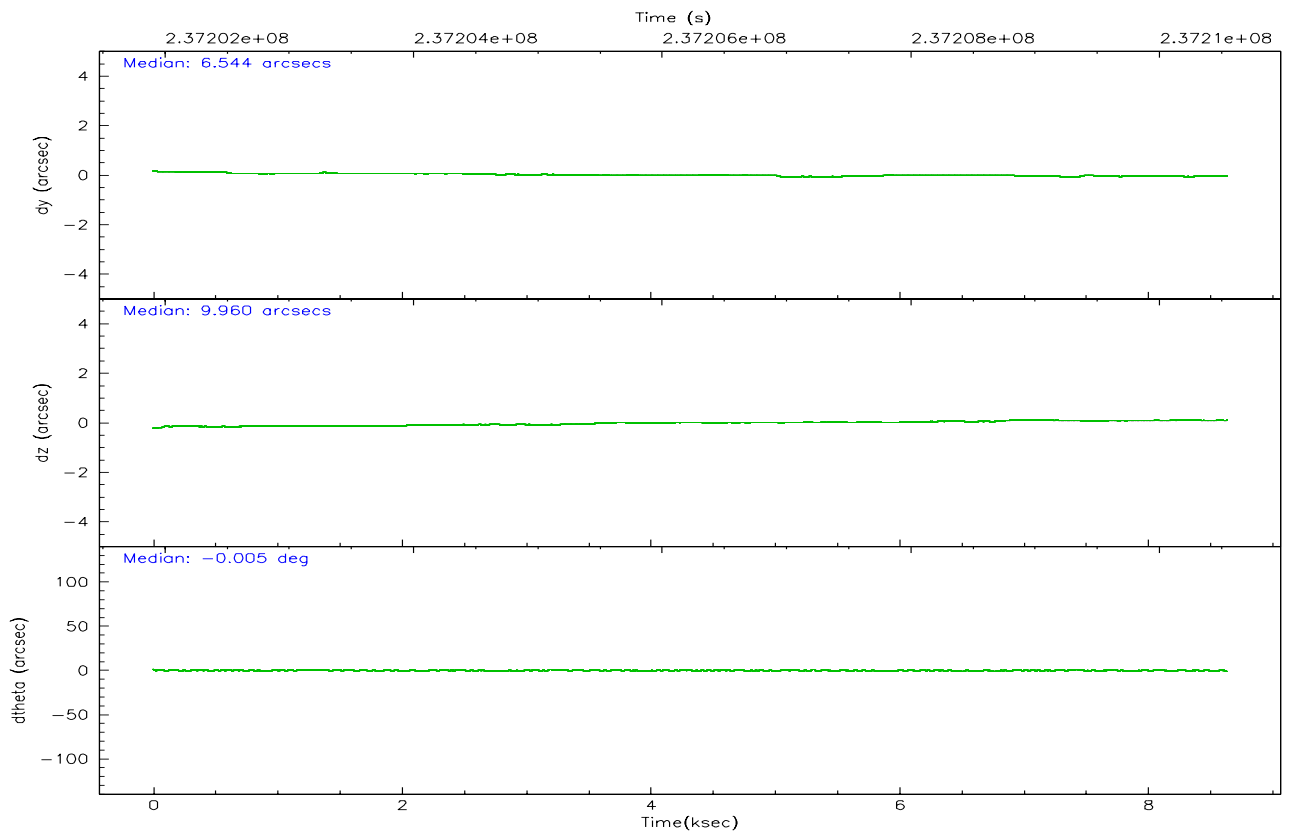
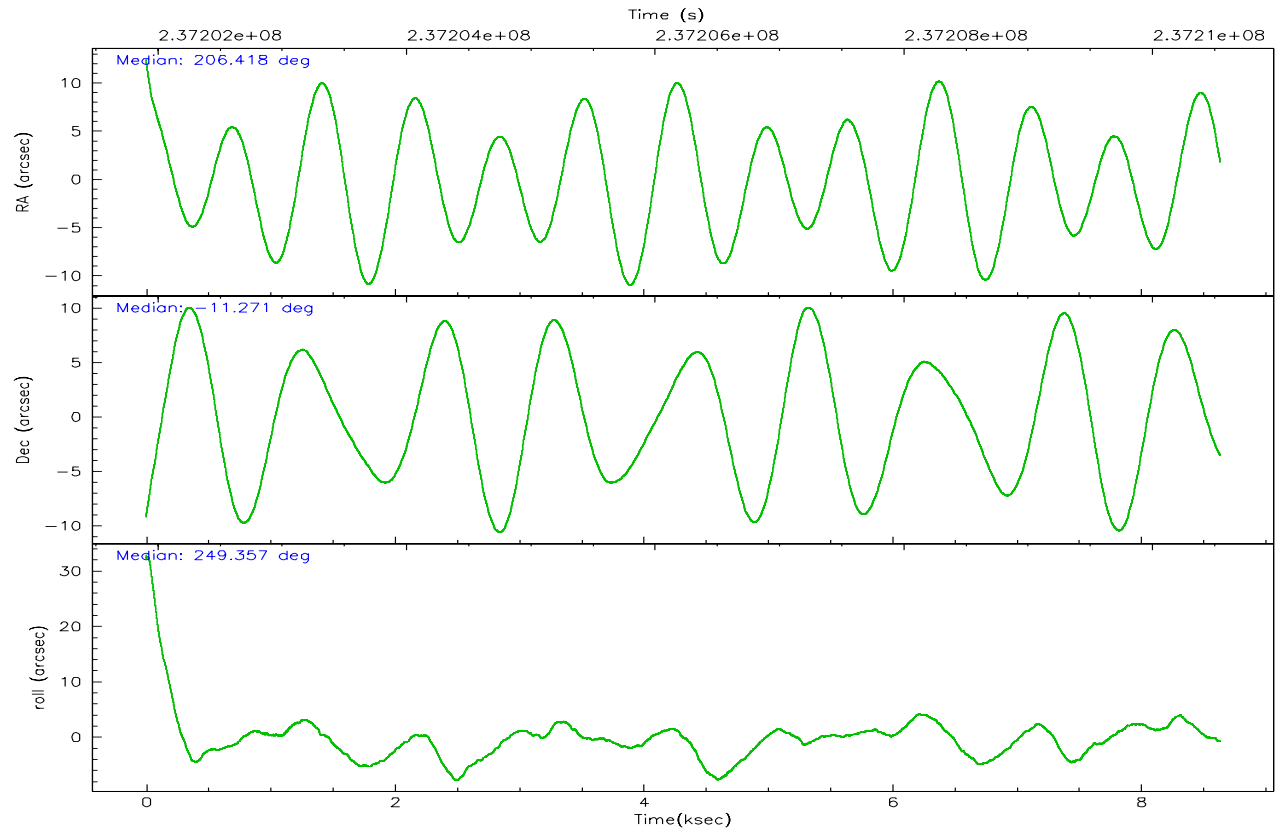
	ccd 2	ccd 3	ccd 5	ccd 6	ccd 7	ccd 8
grade 0 events	762	674	3725	870	1367	2970
	1%	1%	35%	2%	23%	7%
grade 1 events	14	9	69	9	14	27
	0%	0%	0%	0%	0%	0%
grade 2 events	392	155	3029	275	1532	2370
	0%	0%	28%	0%	25%	5%
grade 3 events	206	239	576	238	659	1223
	0%	0%	5%	0%	11%	2%
grade 4 events	261	195	606	218	640	1110
	0%	0%	5%	0%	10%	2%
grade 5 events	54	26	316	26	131	193
	0%	0%	2%	0%	2%	0%
grade 6 events	171	111	546	92	585	2593
	0%	0%	5%	0%	9%	6%
grade 7 events	41911	35395	1752	35602	968	31864
	95%	96%	16%	95%	16%	75%

## 2.2 Compared Parameters

Parameter	Planned	Actual	Parameter	Planned	Actual
Instrument	ACIS	ACIS	Obspar format version number	6	6
Detector	ACIS-235678	ACIS-235678	Obspar file type	PREDICTED	ACTUAL
Grating	NONE	NONE	Obspar update status	NONE	UPDATED
Data mode	VFAINT	VFAINT	On-chip summing requested	N	N
Observation mode	POINTING	POINTING	Subarray requested	NONE	NONE
Pointing RA	206.412710	206.4176837031903	Alternating exposures requested	N	N
Pointing Dec	-11.244197	-11.27093047602447	Primary exposure time	0.000000	3.2
Pointing Roll	249.214185	249.371800712462			
SIM focus pos (mm)	-0.684267	-0.6828225247311905			
SIM defocus (mm)	0	0.001444936568705701			
SIM translation stage pos (mm)	-190.132523	-190.1400660498719			
SIM translation stage offset (mm)	0	0.00754346686406393			
Observation start time	237202287.184000	237201168.41364			
Observation start date	2005-07-08T09:30:23	2005-07-08T09:12:48			
Observation end time	237210537.184000	237210671.70157			
Observation end date	2005-07-08T11:47:53	2005-07-08T11:51:11			
Read mode	TIMED	TIMED			

## 2.3 Aspect





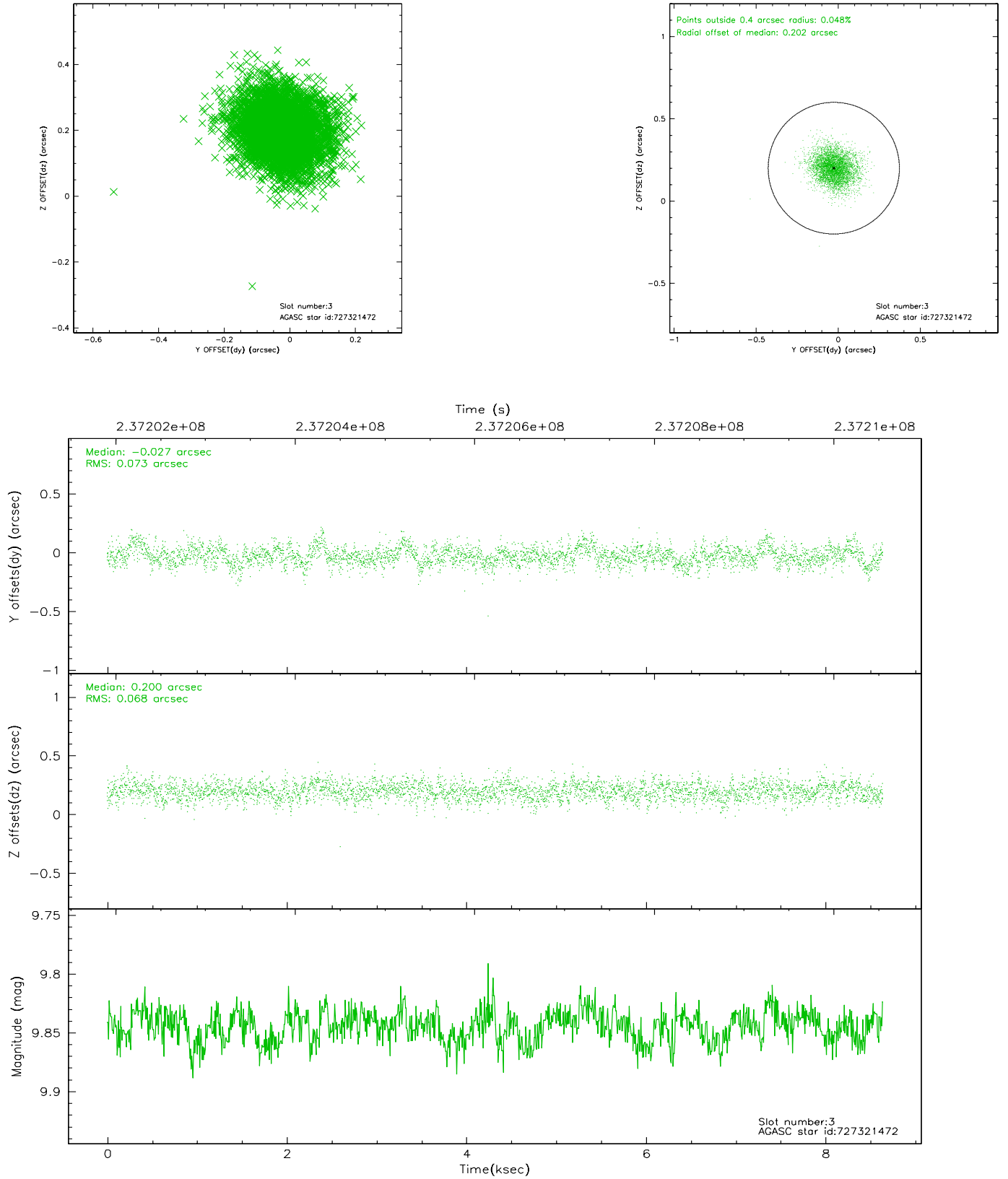
### Slot Statistics

slot	status	id	mag	n_pts	med_dy	med_dz	dr1	dr2	ra	dec	mean_y	mean_z
0	FID	ACIS-S-2	7.11	2107	-0.057	-0.007	0.007	0.012	0.000000	0.000000	-759.32	-1731.21
1	FID	ACIS-S-4	7.21	2107	0.064	0.030	0.006	0.010	0.000000	0.000000	2153.75	176.70
2	FID	ACIS-S-5	7.23	2107	-0.038	-0.013	0.006	0.011	0.000000	0.000000	-1811.36	170.99
3	GUIDE	727321472	9.84	4210	-0.027	0.200	0.106	0.175	206.729745	-11.411859	168.33	1260.45
4	GUIDE	727324288	9.07	4214	-0.006	0.004	0.079	0.129	206.082018	-11.172416	174.60	-1183.19
5	GUIDE	727327544	9.56	4210	0.110	-0.193	0.122	0.192	206.398747	-11.483258	822.79	259.01
6	GUIDE	728245744	8.67	4214	-0.152	0.167	0.066	0.107	206.959040	-11.284446	-547.08	1855.24
7	GUIDE	727322224	10.13	4206	0.075	-0.180	0.151	0.247	205.710123	-11.336917	1196.10	-2198.57

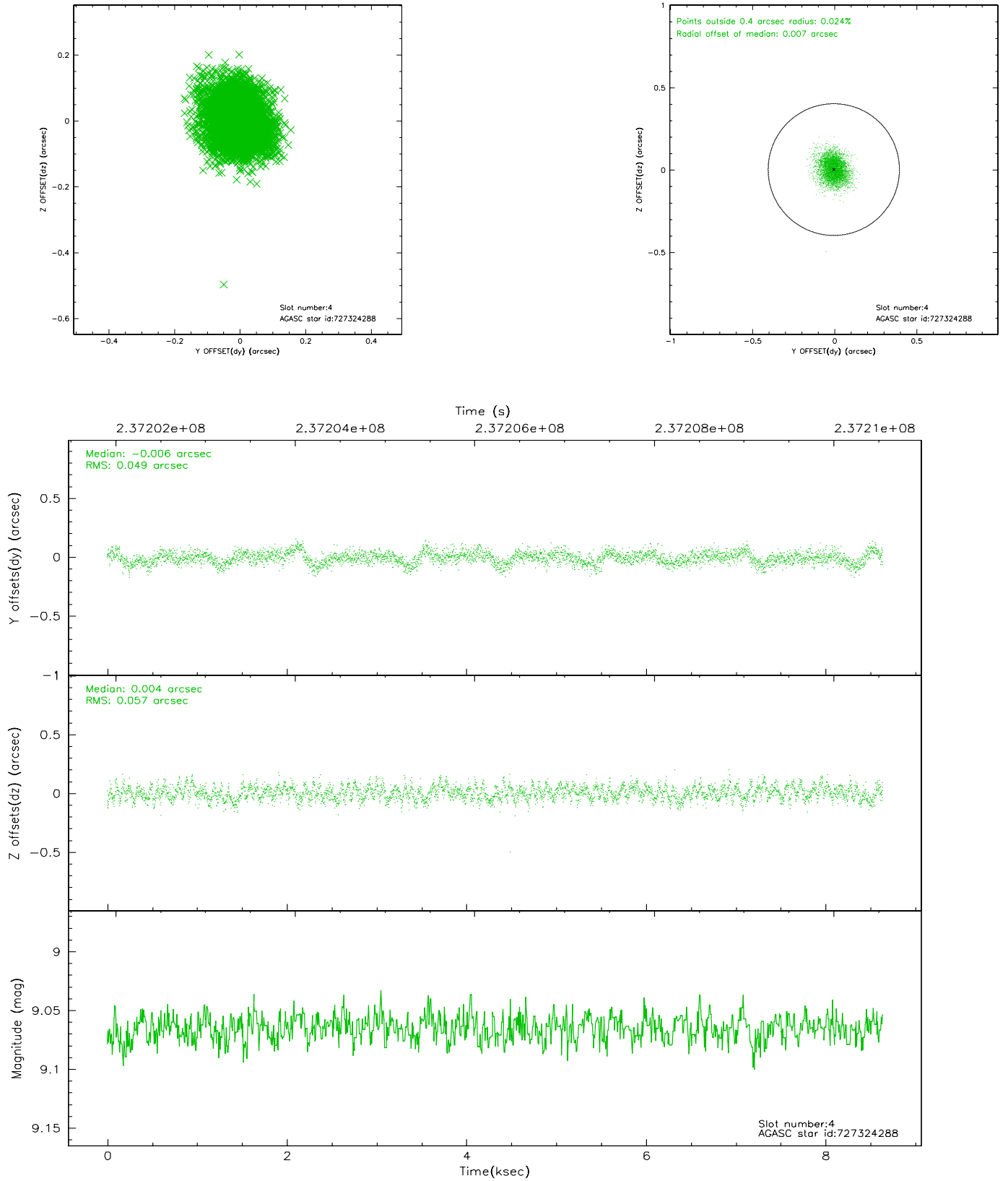


## 2.4 Star Slots

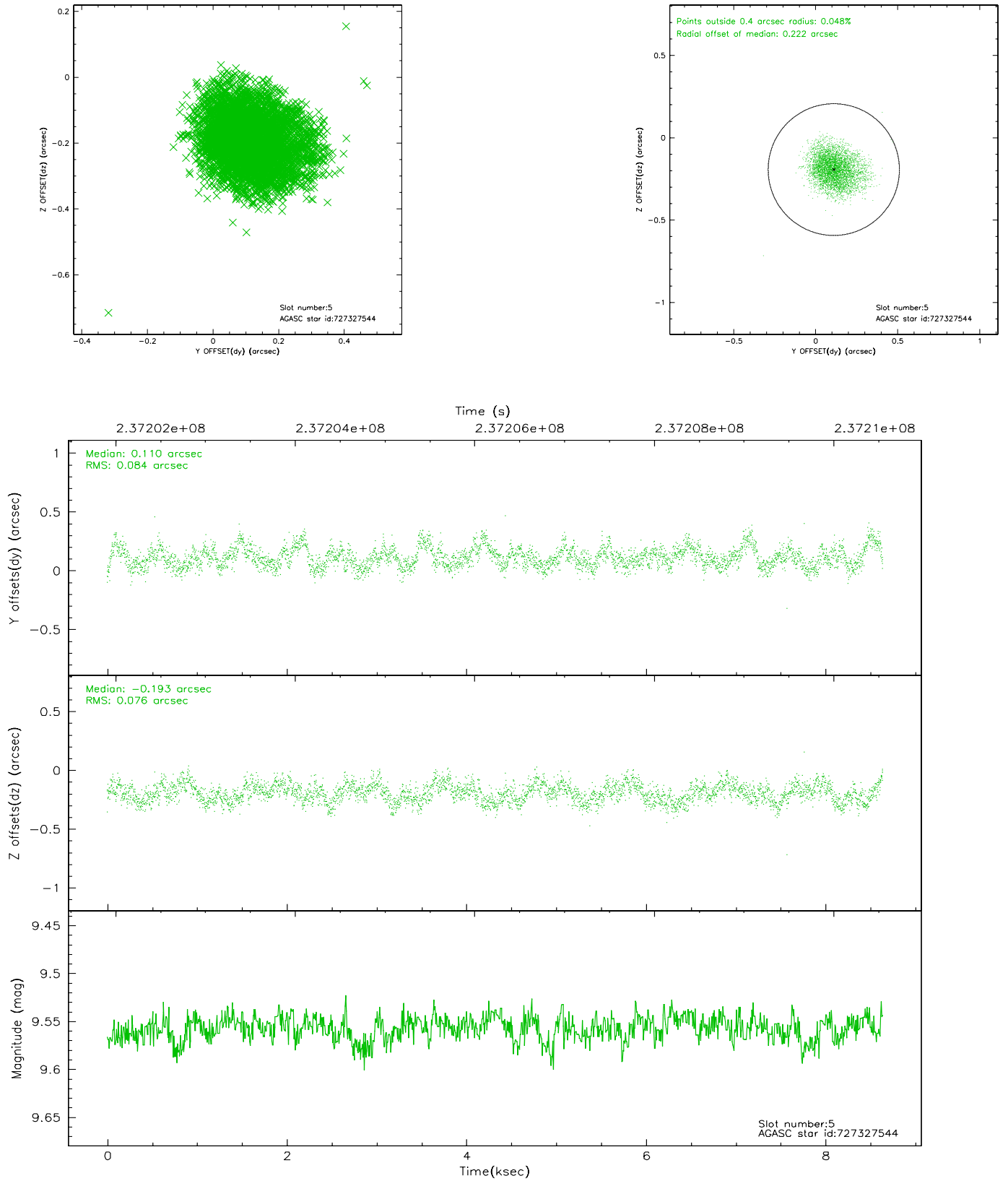
### 2.4.1 Slot 3



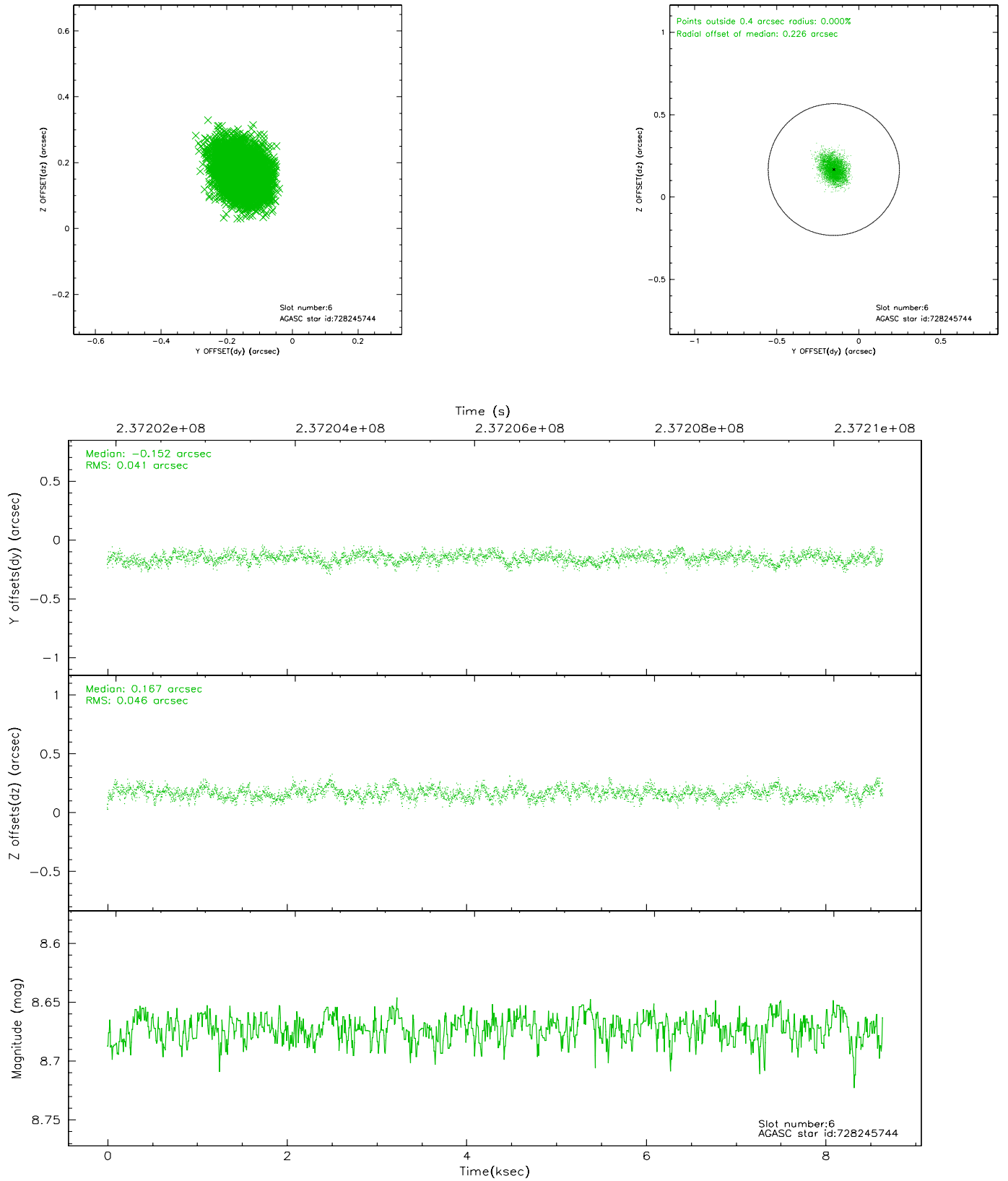
## 2.4.2 Slot 4



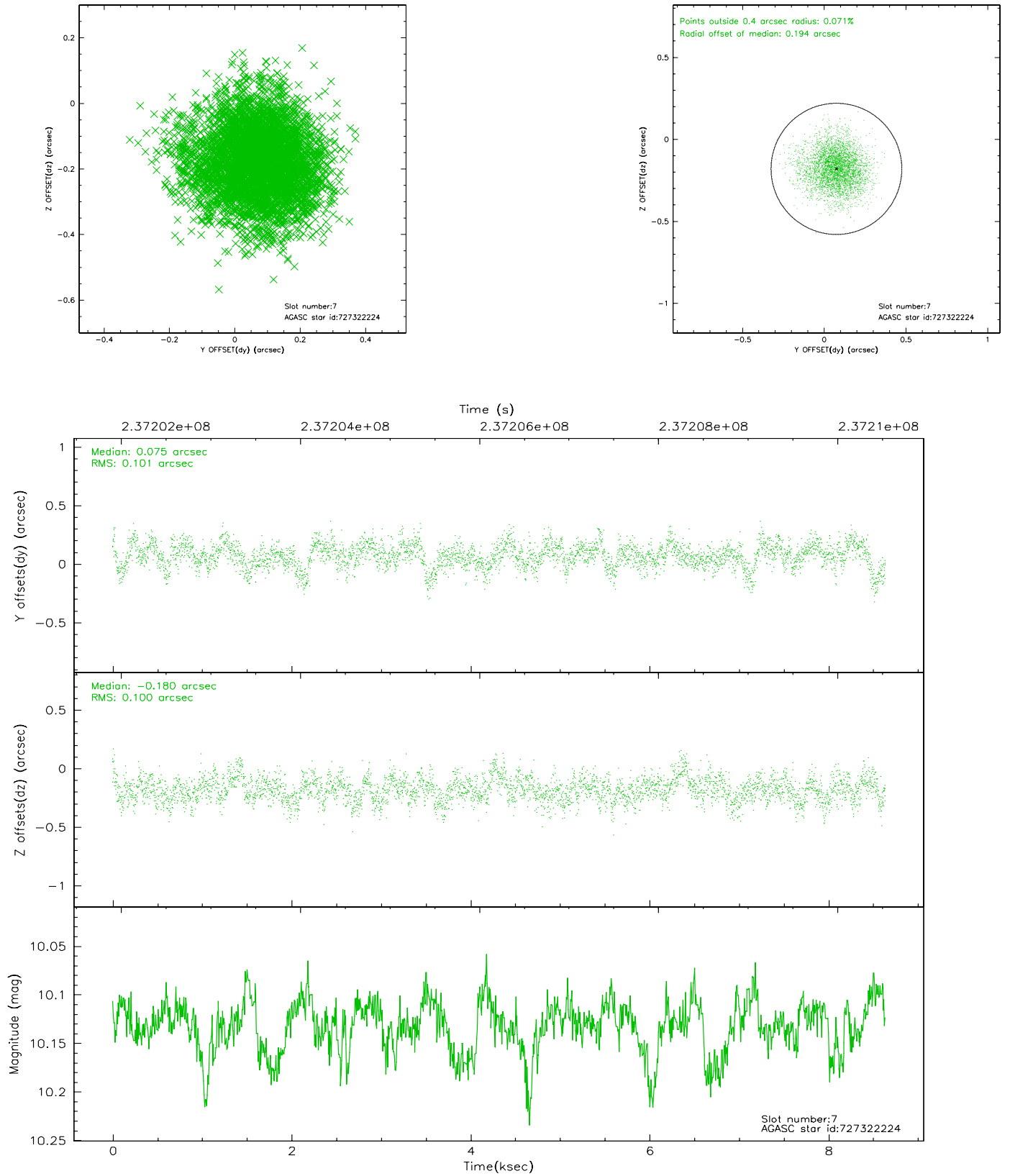
### 2.4.3 Slot 5



## 2.4.4 Slot 6

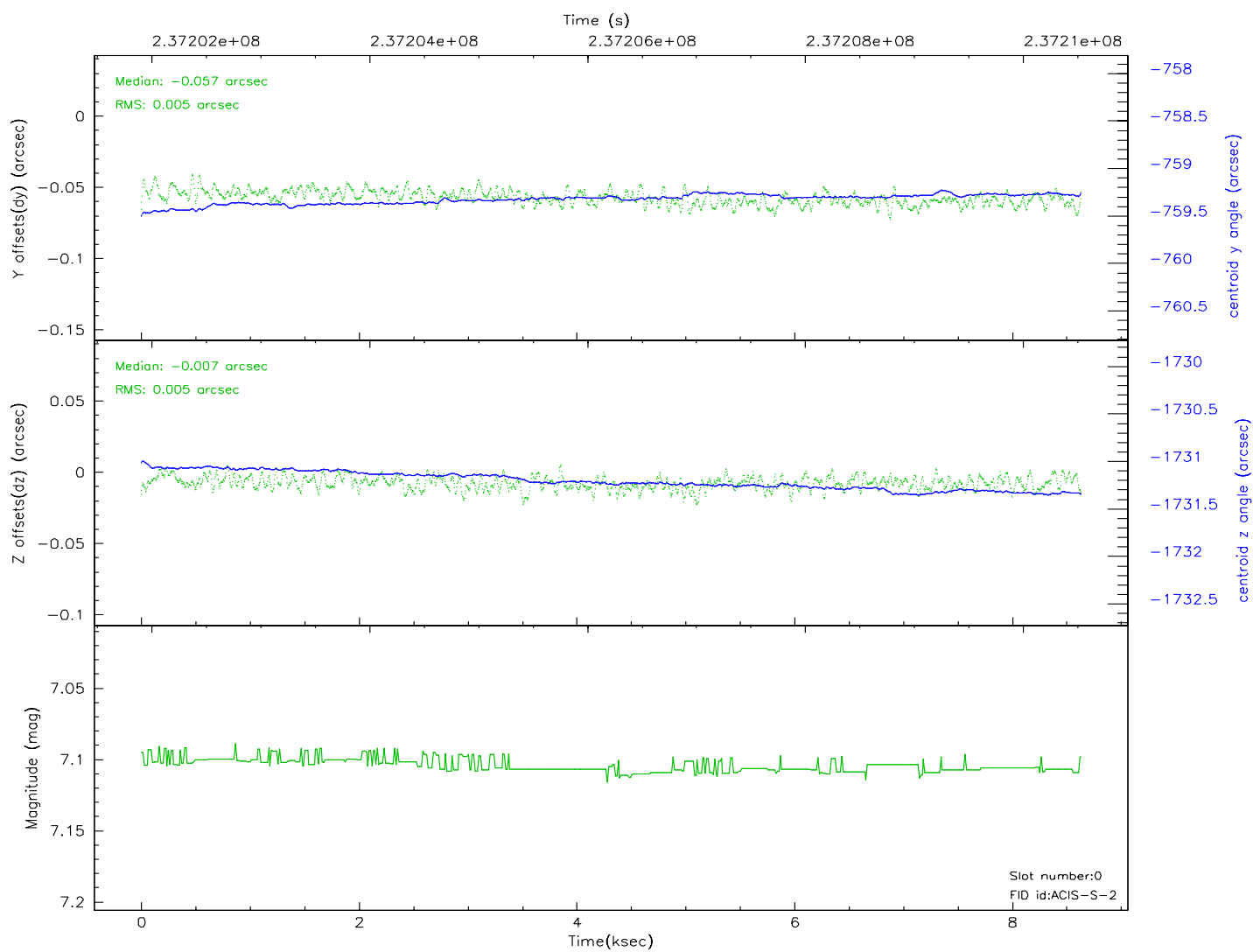
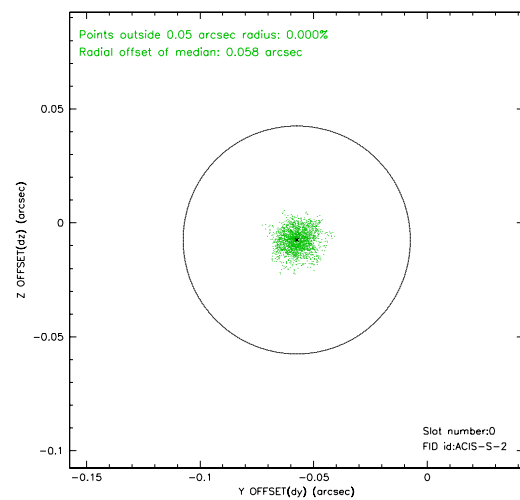
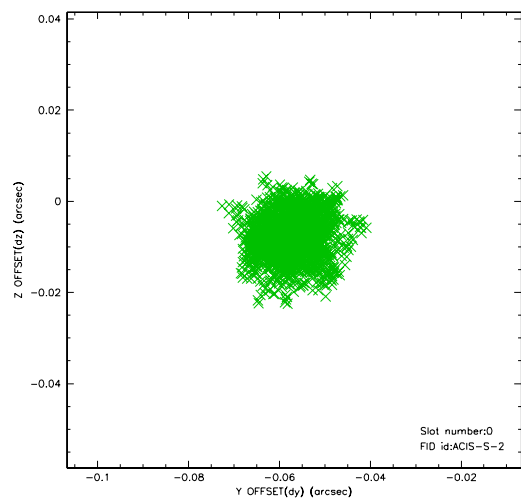


## 2.4.5 Slot 7

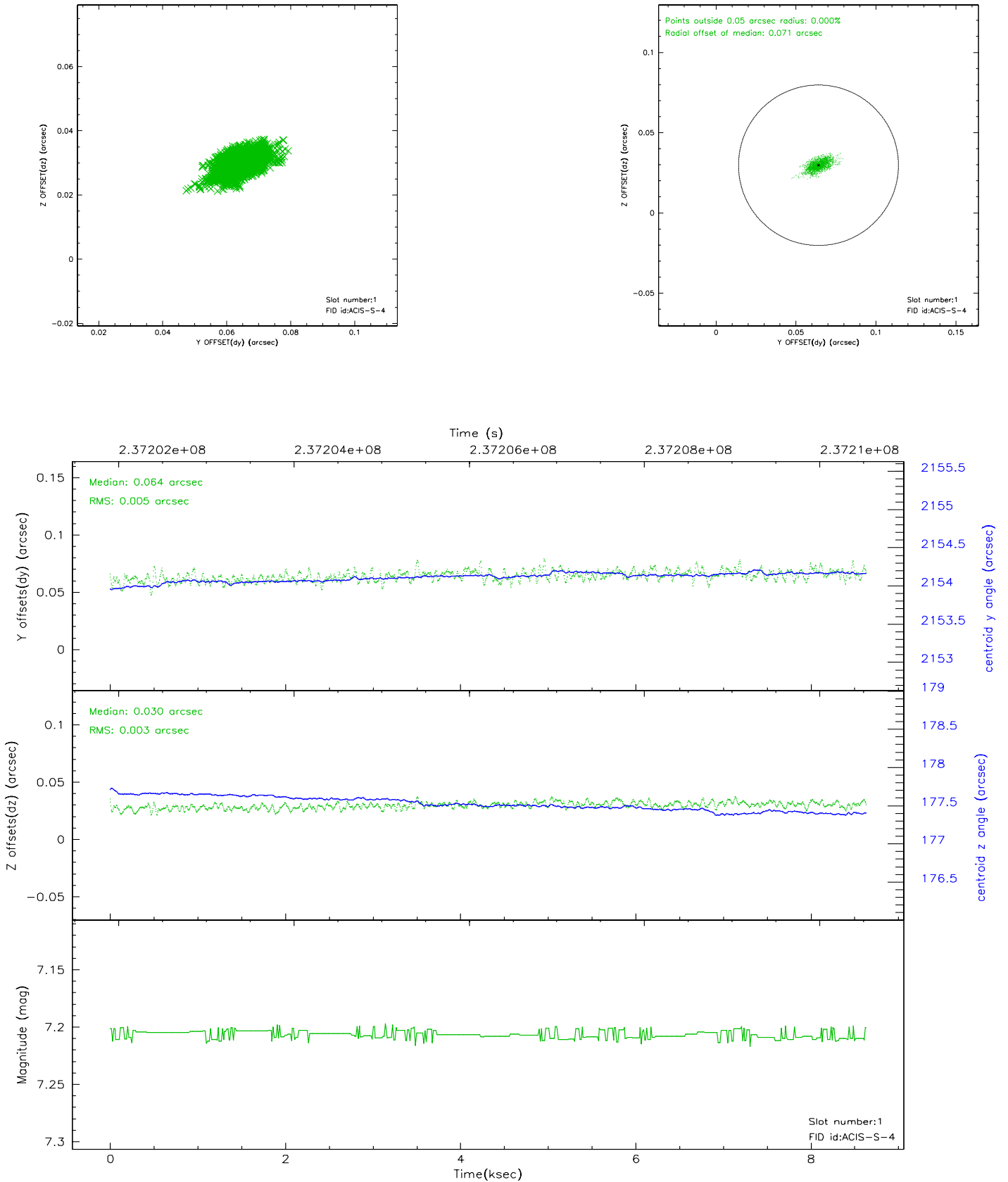


## 2.5 FID Slots

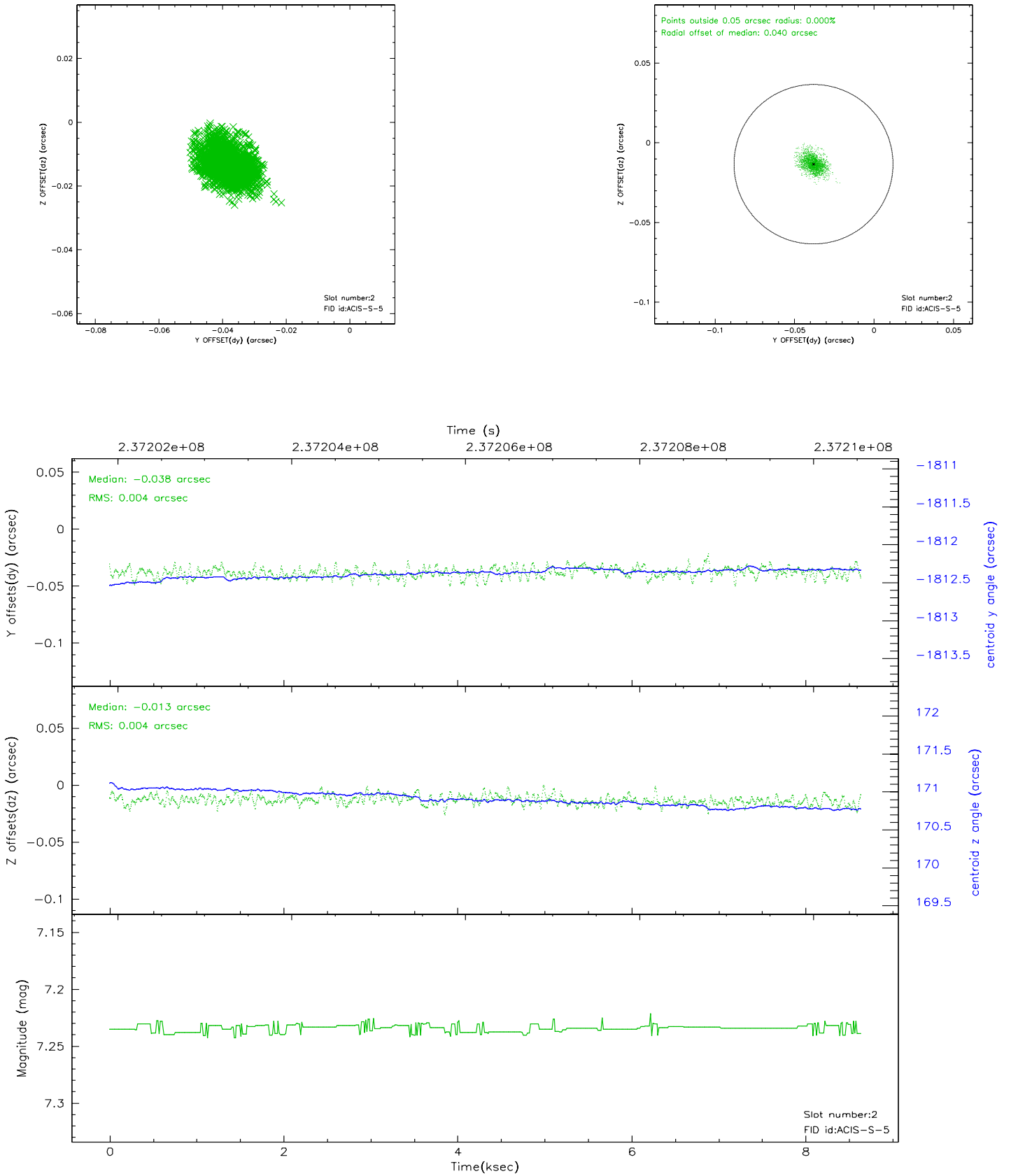
### 2.5.1 Slot 0



## 2.5.2 Slot 1

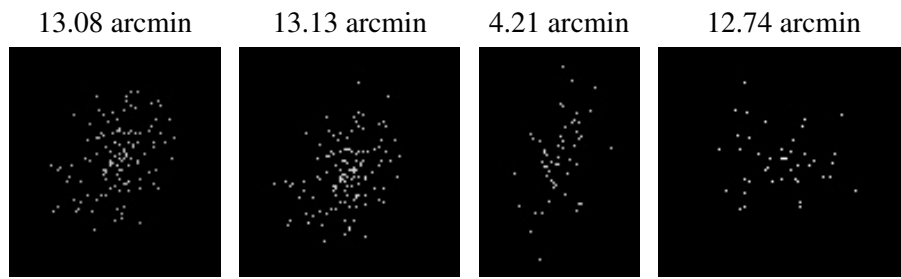


### 2.5.3 Slot 2





### 3 Point Sources



# A Summary

## A.1 Status

V&V Scientist	Jen Lauer
V&V Date (YYYY-MM-DD)	2006.03.14
V&V Edition	1
V&V Disposition and Status	OK
V&V Charge Time	8.211199

## A.2 Comments

The ACIS focal plane temperature was outside the calibration limits for the entire observation.