

V&V Reference Report

L2 ASCDS Version : 7.6.7.1

Observation 6325 - L2 Version 002
Chandra X-Ray Center

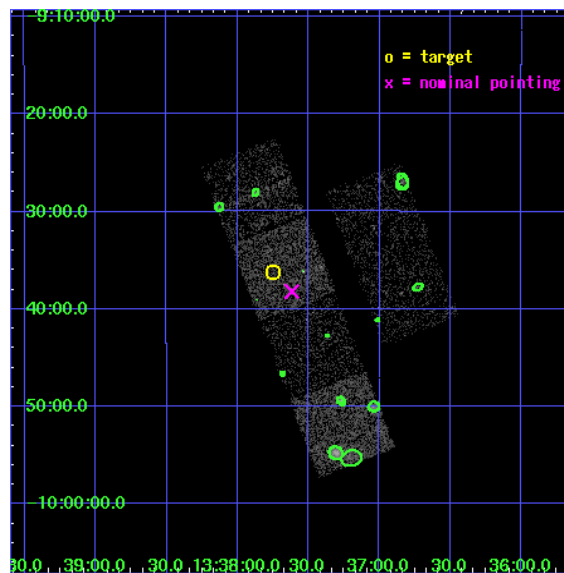
L2 Processing Date : Mar 11 2006

Contents

1	Front	2
2	OBI	3
2.1	OBI	3
2.1.1	Images	3
2.1.2	Bias	3
2.1.3	Parameters	4
2.1.4	Events	4
2.2	Compared Parameters	5
2.3	Aspect	6
2.4	Star Slots	9
2.4.1	Slot 3	9
2.4.2	Slot 4	10
2.4.3	Slot 5	11
2.4.4	Slot 6	12
2.4.5	Slot 7	13
2.5	FID Slots	14
2.5.1	Slot 0	14
2.5.2	Slot 1	15
2.5.3	Slot 2	16
3	Point Sources	17
A	Summary	18
A.1	Status	18
A.2	Comments	18

1 Front

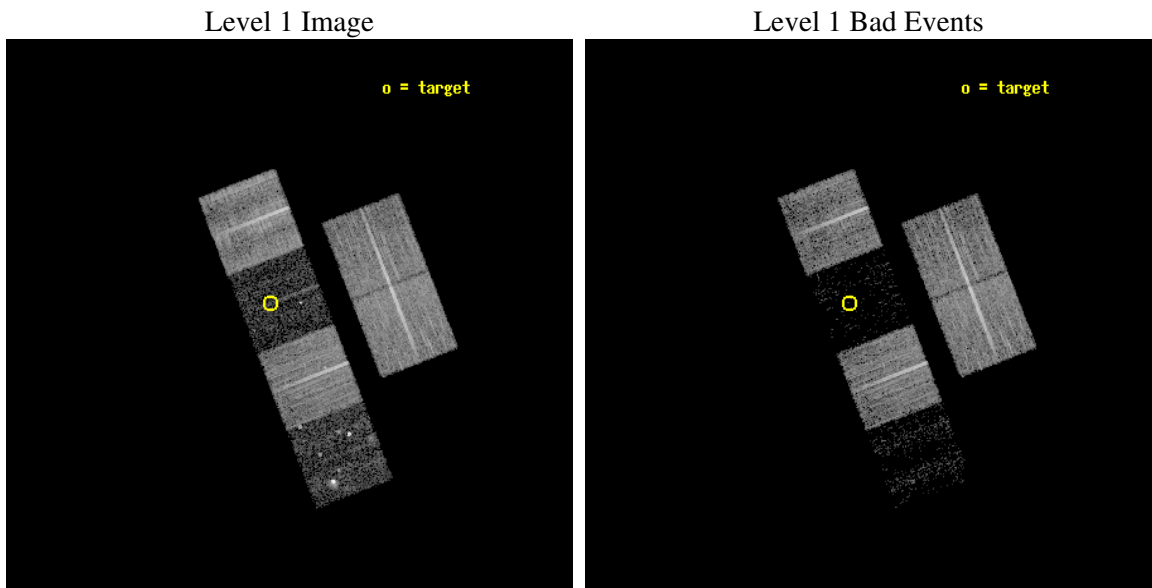
seq_num	100060
obs_id	6325
title	Comet 9P/Tempel 1 During the Deep Impact Encounter
observer	Dr. Carey Lisse
object	9P/Tempel 1
dtcycle	0
cycle	P
ra_targ	204.437451
dec_targ	-9.603522
ra_nom	204.40433041134
dec_nom	-9.6367692734811
roll_nom	248.83644969829
revision	2
ontime	10806.399959743
livetime	10669.56281662
ontime2	10806.399959743
ontime3	10806.399959743
ontime5	10806.399959743
ontime6	10806.399959743
ontime7	10806.399959743
ontime8	10806.399959743
l2events	16468



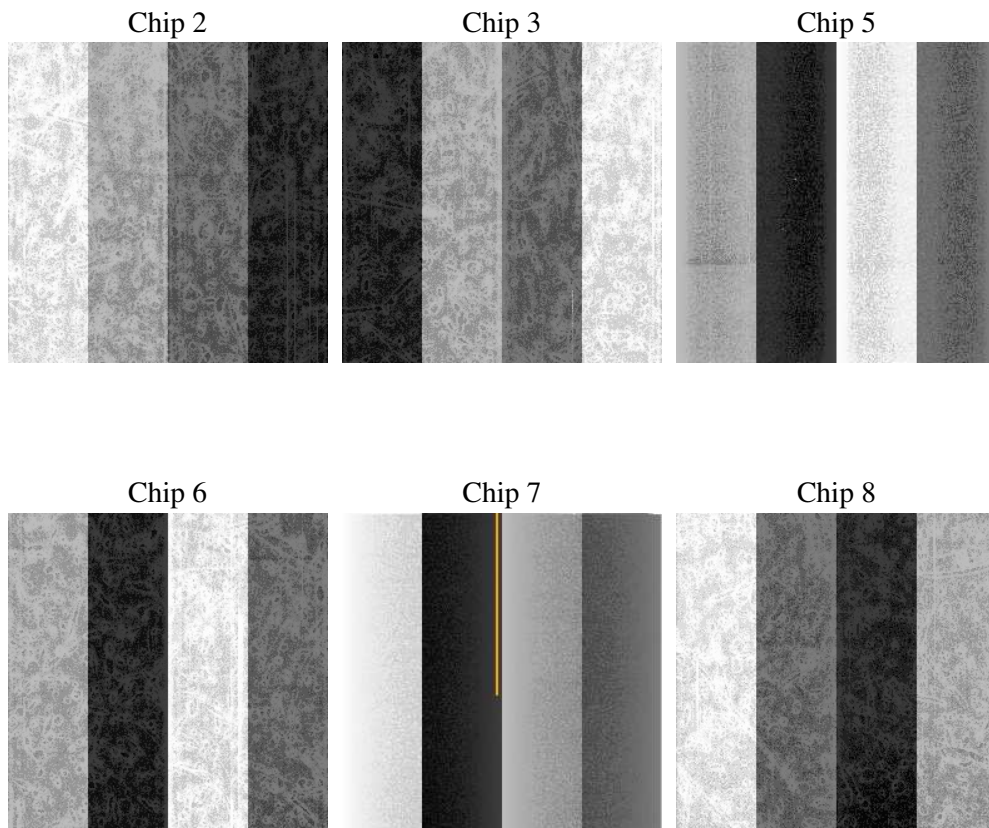
2 OBI

2.1 OBI

2.1.1 Images



2.1.2 Bias



2.1.3 Parameters

obi_num	0
ascdsver	7.6.7.1
caldbver	3.2.1
date	2006-03-12T01:34:10
revision	2

sched_exp_time	10799.000000
ontime	10941.648450583
ontime2	10941.648420632
ontime3	10941.648420632
ontime5	10941.648450583
ontime6	10941.648420632
ontime7	10941.648450583
ontime8	10941.648450583
l1events	218141

2.1.4 Events

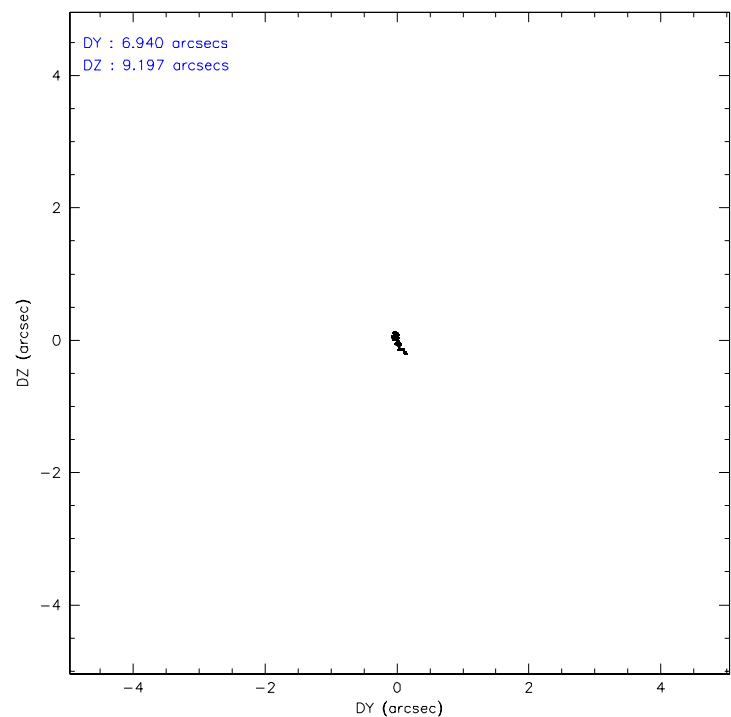
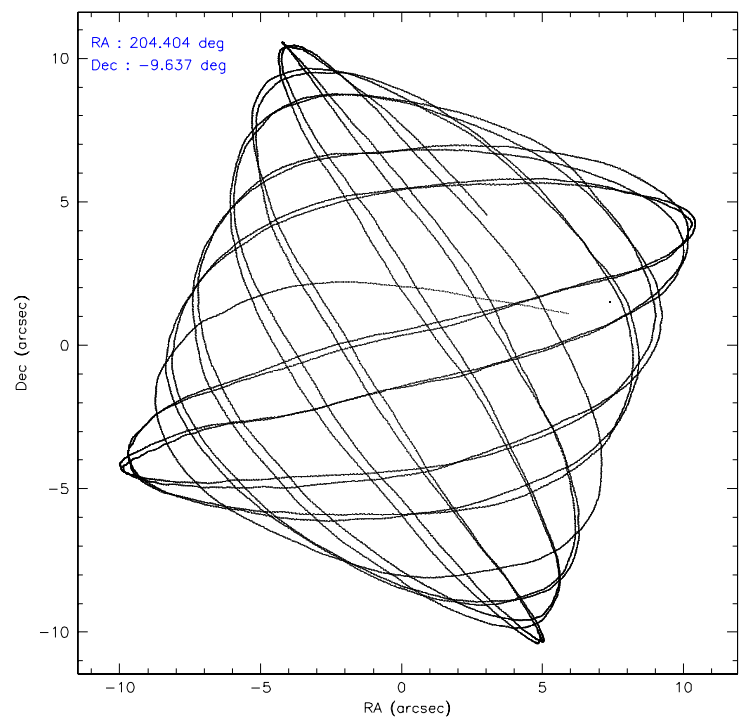
	ccd 2	ccd 3	ccd 5	ccd 6	ccd 7	ccd 8
level 1 events	54675	44619	12265	45941	6884	53757
rejected events	52472	42987	2965	43840	1574	40155
rejected %	95%	96%	24%	95%	22%	74%

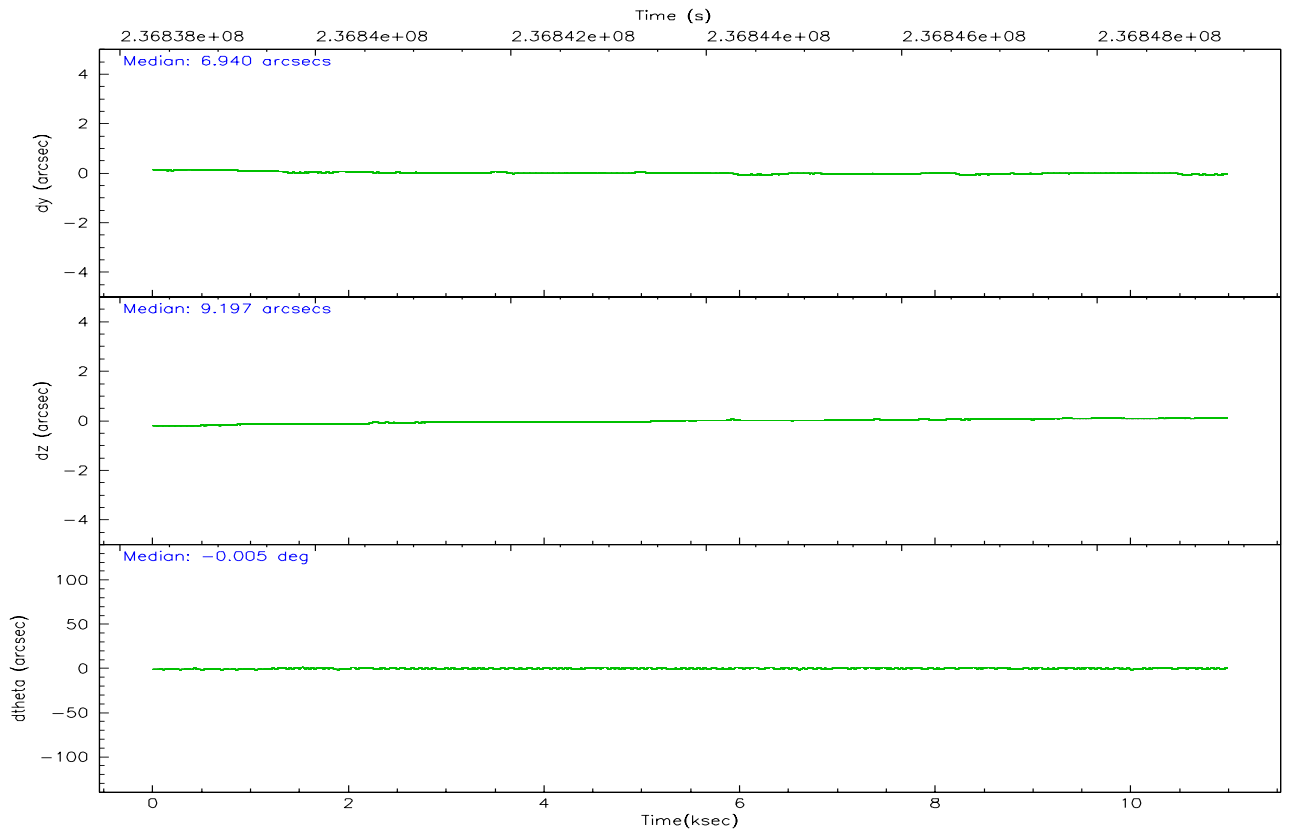
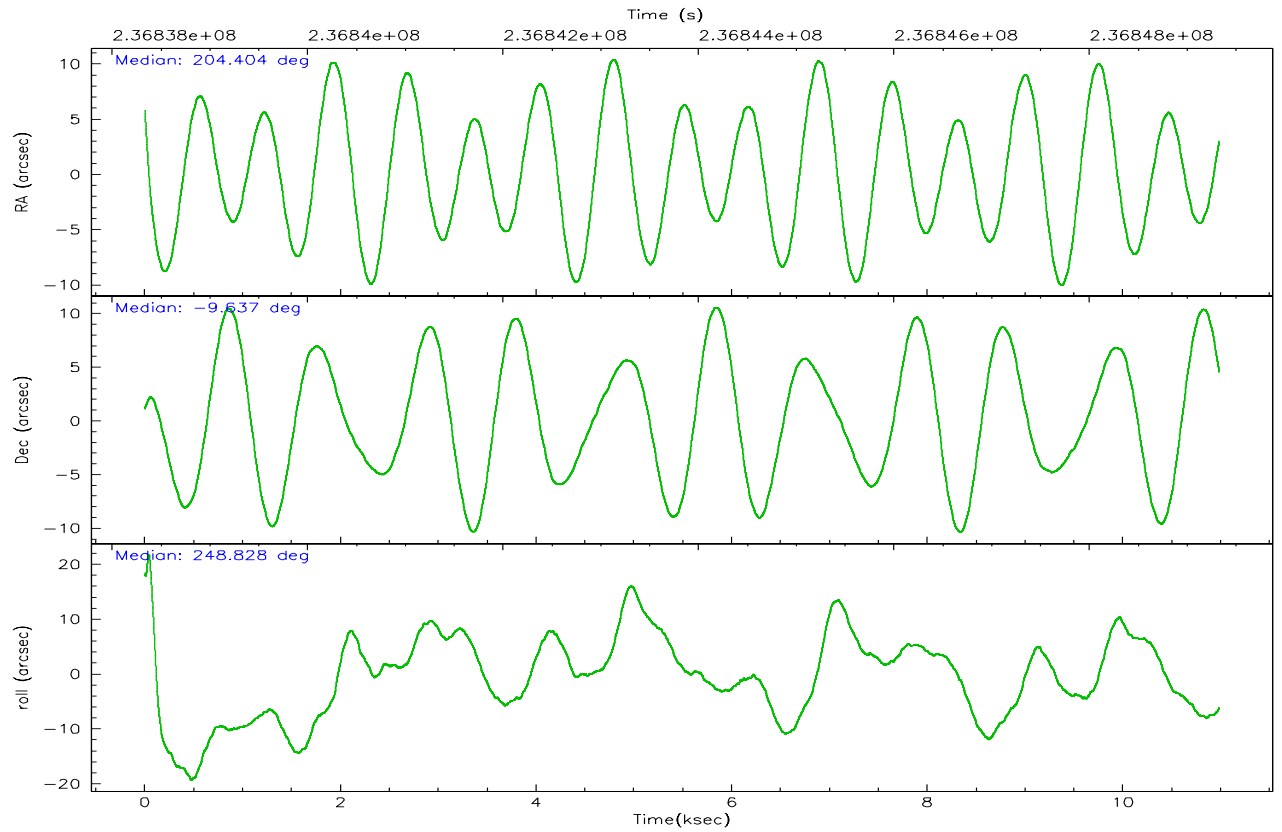
	ccd 2	ccd 3	ccd 5	ccd 6	ccd 7	ccd 8
grade 0 events	846	801	3690	1047	1303	3786
	1%	1%	30%	2%	18%	7%
grade 1 events	16	14	45	15	35	36
	0%	0%	0%	0%	0%	0%
grade 2 events	569	184	3298	366	1894	3073
	1%	0%	26%	0%	27%	5%
grade 3 events	261	291	747	272	759	1551
	0%	0%	6%	0%	11%	2%
grade 4 events	330	265	734	291	715	1413
	0%	0%	5%	0%	10%	2%
grade 5 events	77	41	472	33	165	324
	0%	0%	3%	0%	2%	0%
grade 6 events	221	112	911	151	705	3926
	0%	0%	7%	0%	10%	7%
grade 7 events	52355	42911	2368	43766	1308	39648
	95%	96%	19%	95%	19%	73%

2.2 Compared Parameters

Parameter	Planned	Actual	Parameter	Planned	Actual
Instrument	ACIS	ACIS	Obspar format version number	6	6
Detector	ACIS-235678	ACIS-235678	Obspar file type	PREDICTED	ACTUAL
Grating	NONE	NONE	Obspar update status	NONE	UPDATED
Data mode	VFAINT	VFAINT	On-chip summing requested	N	N
Observation mode	POINTING	POINTING	Subarray requested	NONE	NONE
Pointing RA	204.399745	204.404330411342	Alternating exposures requested	N	N
Pointing Dec	-9.609943	-9.636769273481105	Primary exposure time	0.000000	3.2
Pointing Roll	248.679014	248.8364496982858			
SIM focus pos (mm)	-0.684267	-0.6828225247311905			
SIM defocus (mm)	0	0.001444936568705701			
SIM translation stage pos (mm)	-190.132523	-190.145094680475			
SIM translation stage offset (mm)	0	0.01257209746719923			
Observation start time	236838524.184000	236837539.90951			
Observation start date	2005-07-04T04:27:40	2005-07-04T04:12:19			
Observation end time	236849323.184000	236849457.07255			
Observation end date	2005-07-04T07:27:39	2005-07-04T07:30:57			
Read mode	TIMED	TIMED			

2.3 Aspect



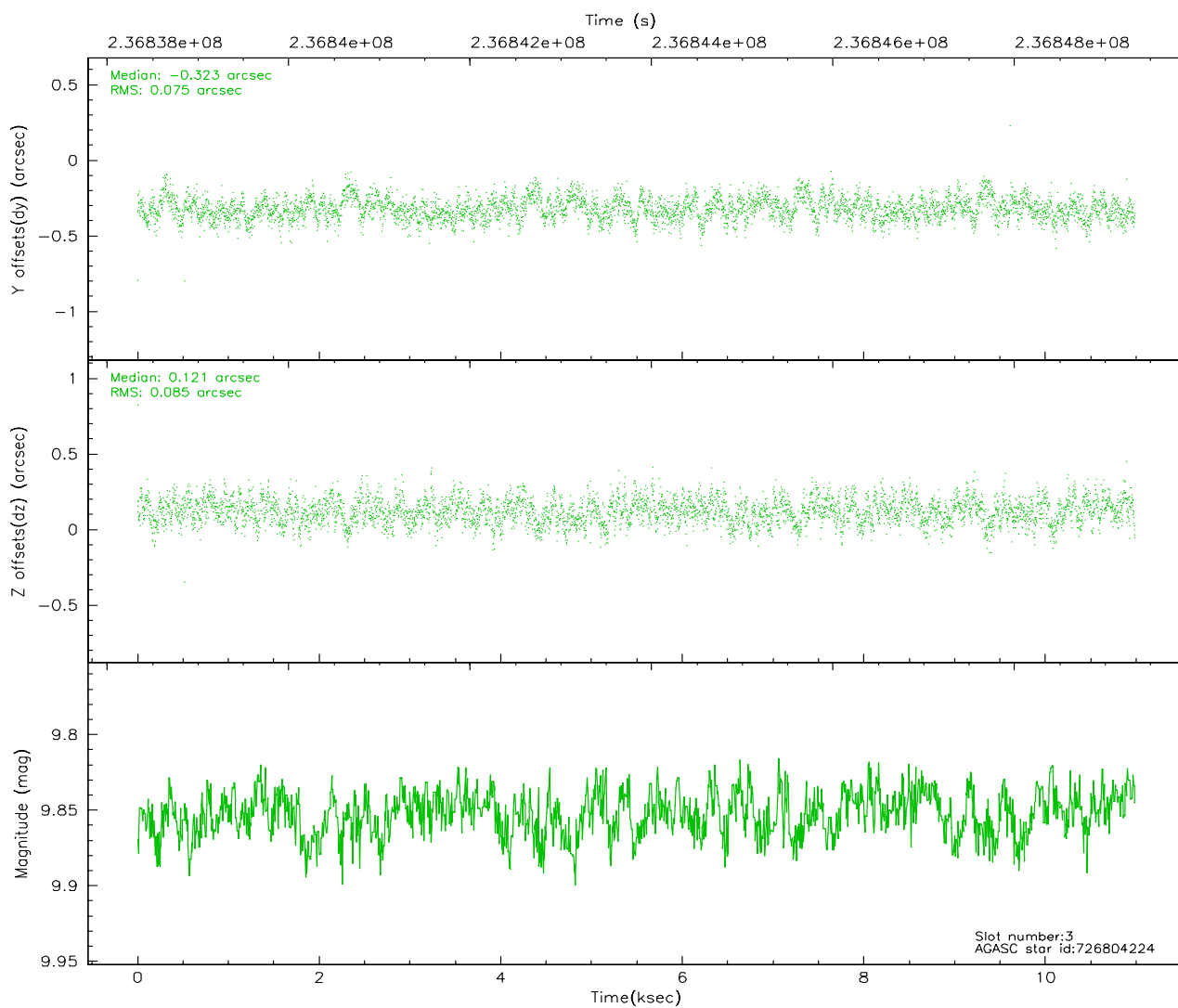
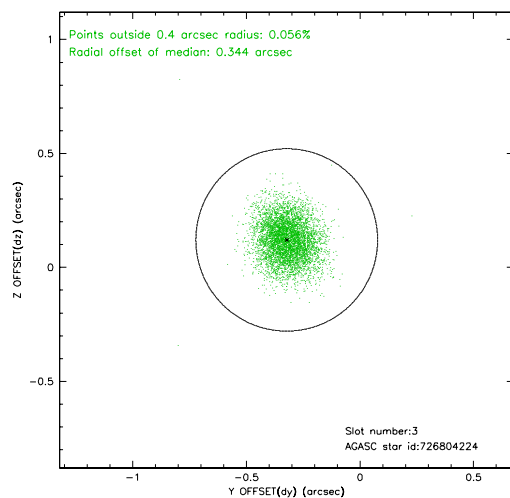
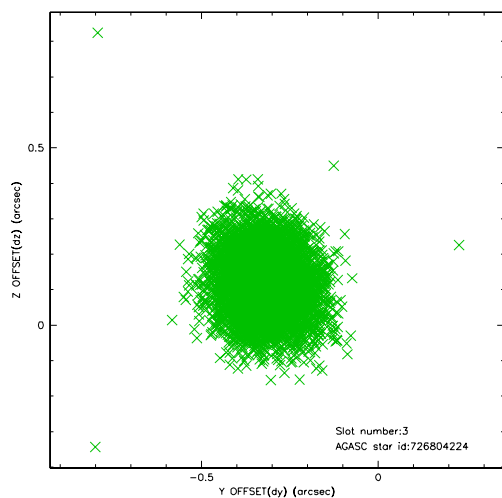


Slot Statistics

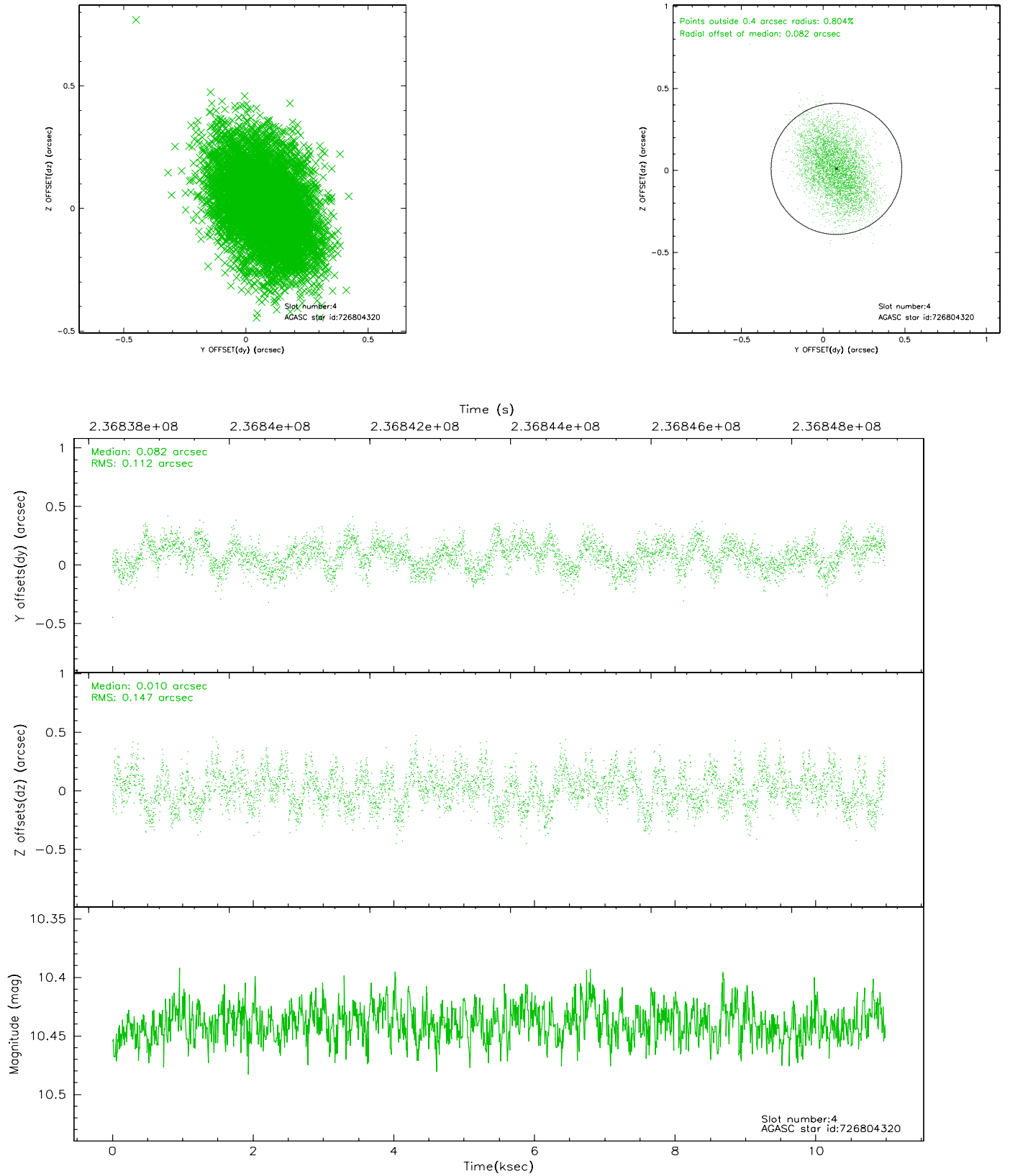
slot	status	id	mag	n_pts	med_dy	med_dz	dr1	dr2	ra	dec	mean_y	mean_z
0	FID	ACIS-S-1	7.19	2679	0.033	0.015	0.006	0.010	0.000000	0.000000	936.36	-1725.92
1	FID	ACIS-S-2	7.10	2679	-0.052	-0.006	0.006	0.011	0.000000	0.000000	-759.37	-1730.96
2	FID	ACIS-S-6	7.35	2679	-0.002	-0.004	0.006	0.010	0.000000	0.000000	401.79	814.92
3	GUIDE	726804224	9.85	5351	-0.323	0.121	0.120	0.192	203.979225	-8.888668	-1874.15	-2336.90
4	GUIDE	726804320	10.44	5348	0.082	0.010	0.198	0.317	203.890975	-9.273004	-471.33	-2124.45
5	GUIDE	726932888	9.56	5356	-0.548	-0.052	0.122	0.205	204.640397	-9.165404	-1801.92	214.73
6	GUIDE	726935840	9.51	5354	0.684	-0.542	0.090	0.149	205.084608	-9.297514	-1930.03	1858.32
7	GUIDE	727320712	10.43	5350	0.106	0.453	0.203	0.327	204.468965	-10.254166	2071.21	1073.30

2.4 Star Slots

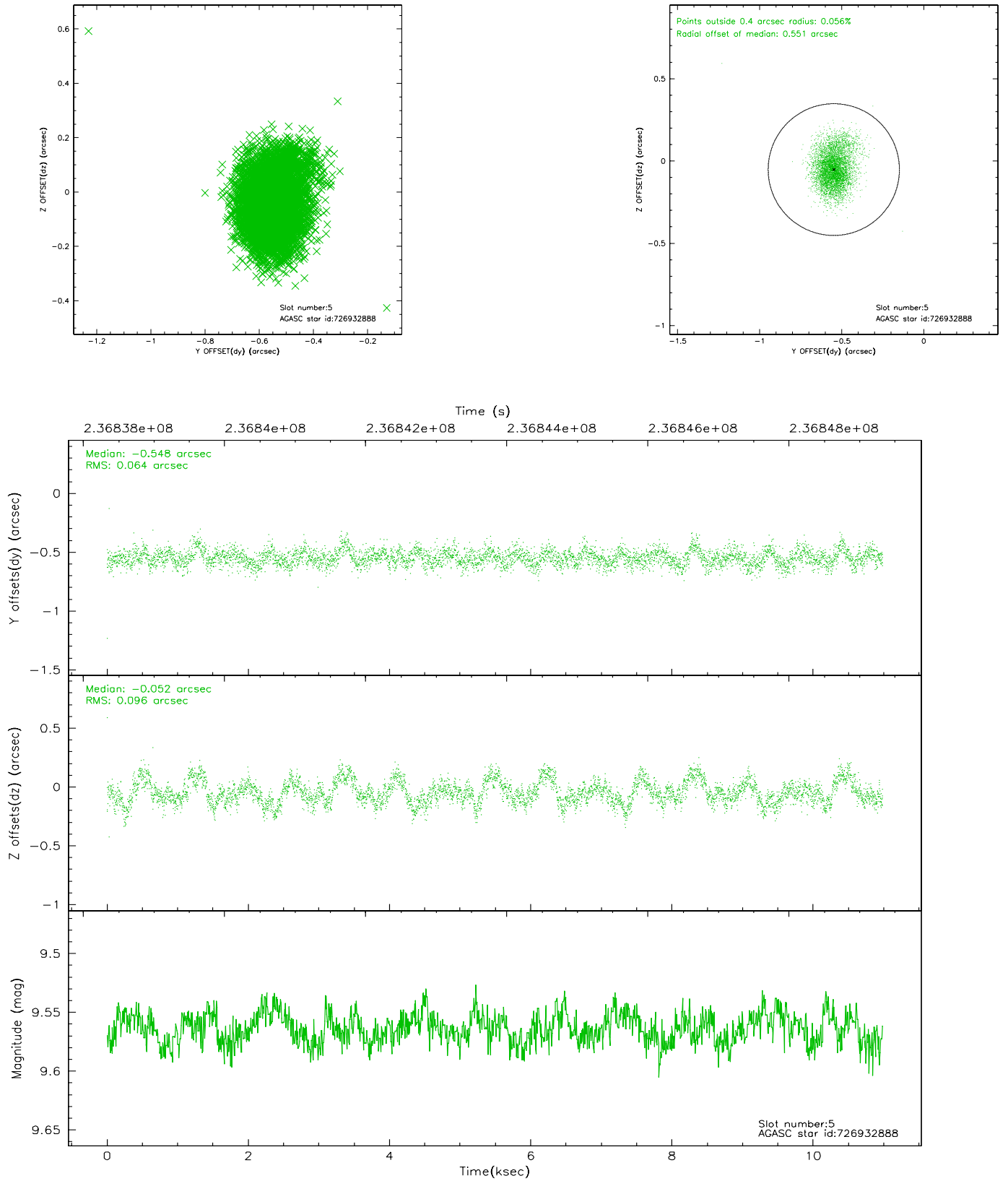
2.4.1 Slot 3



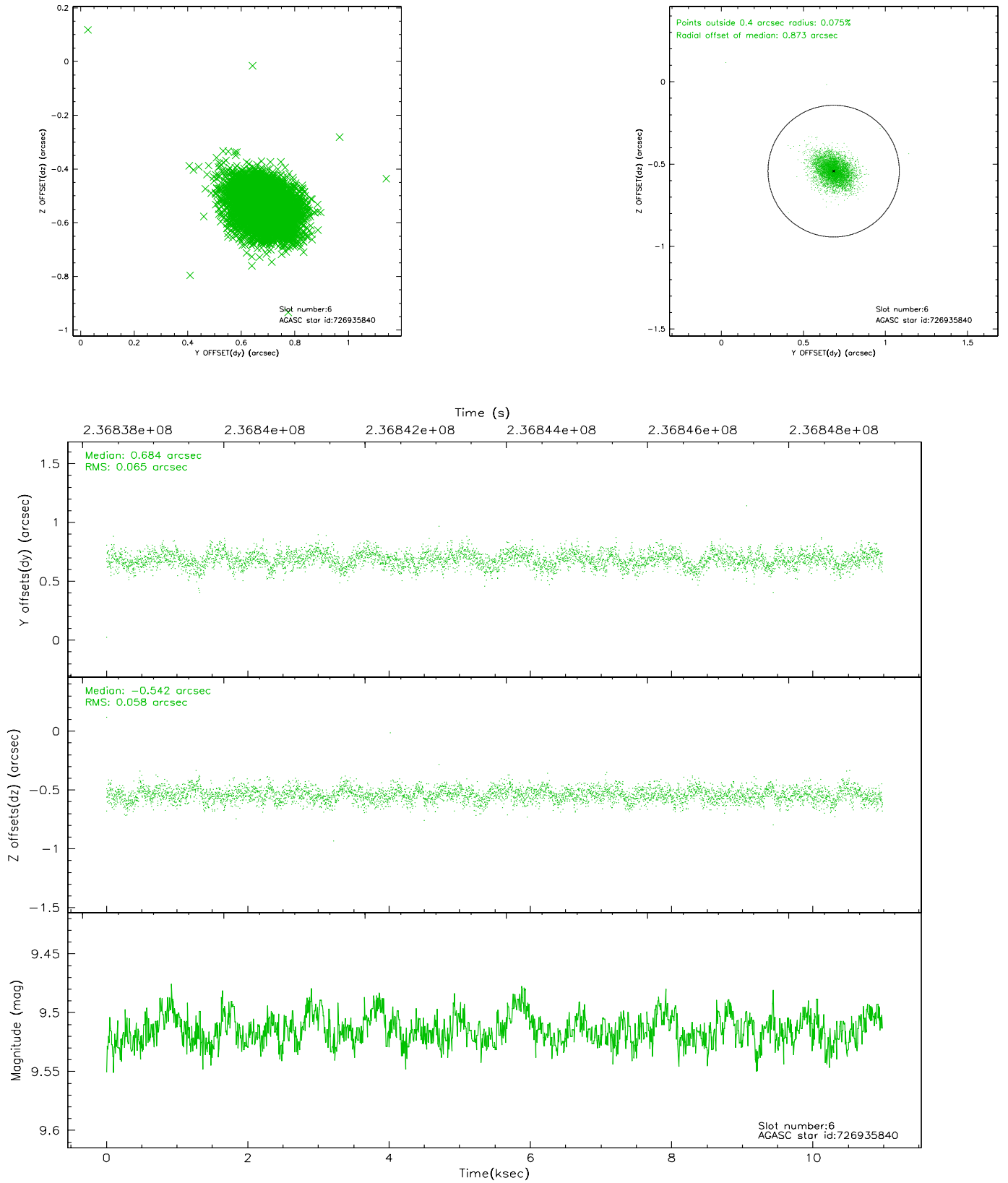
2.4.2 Slot 4



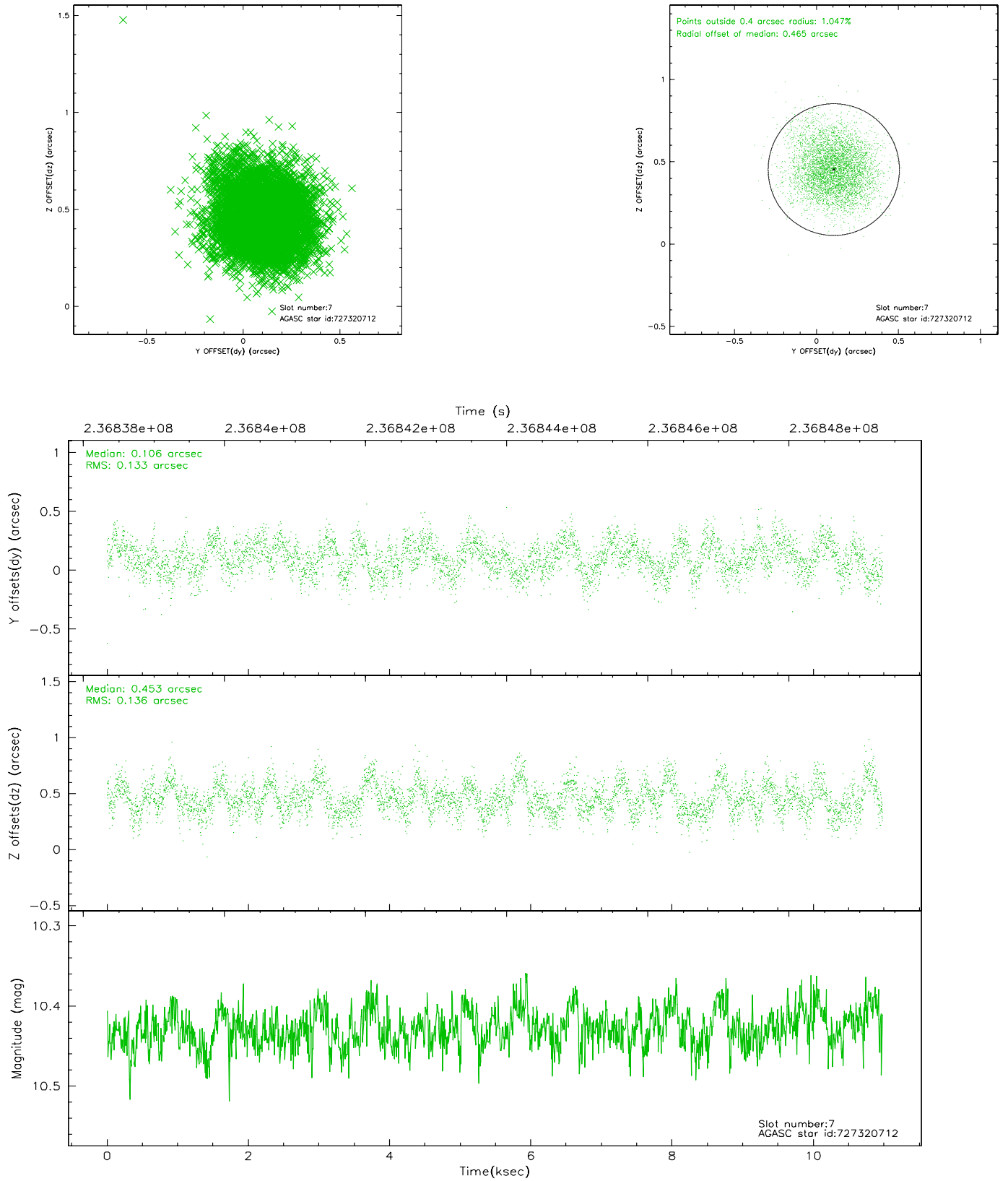
2.4.3 Slot 5



2.4.4 Slot 6

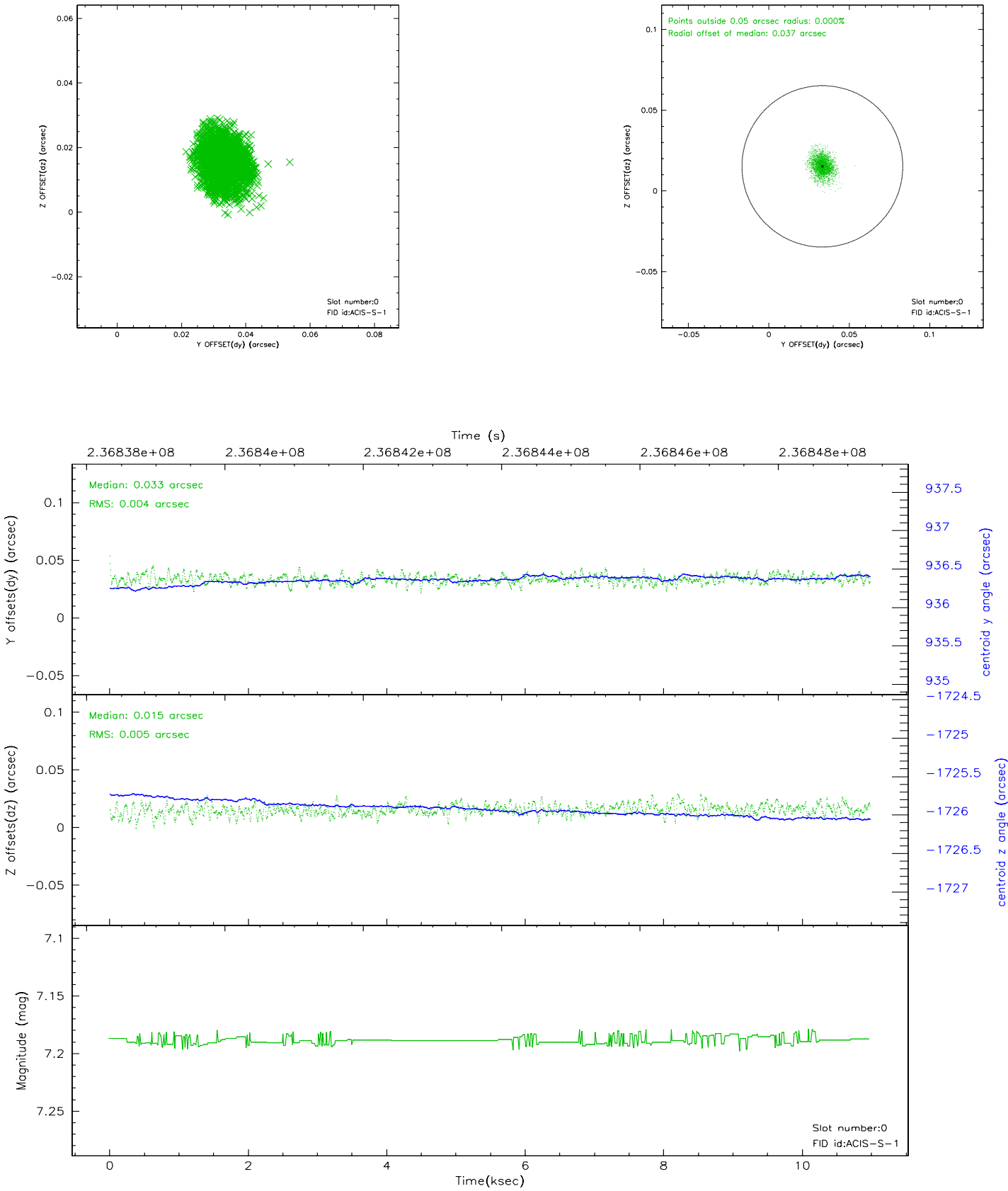


2.4.5 Slot 7

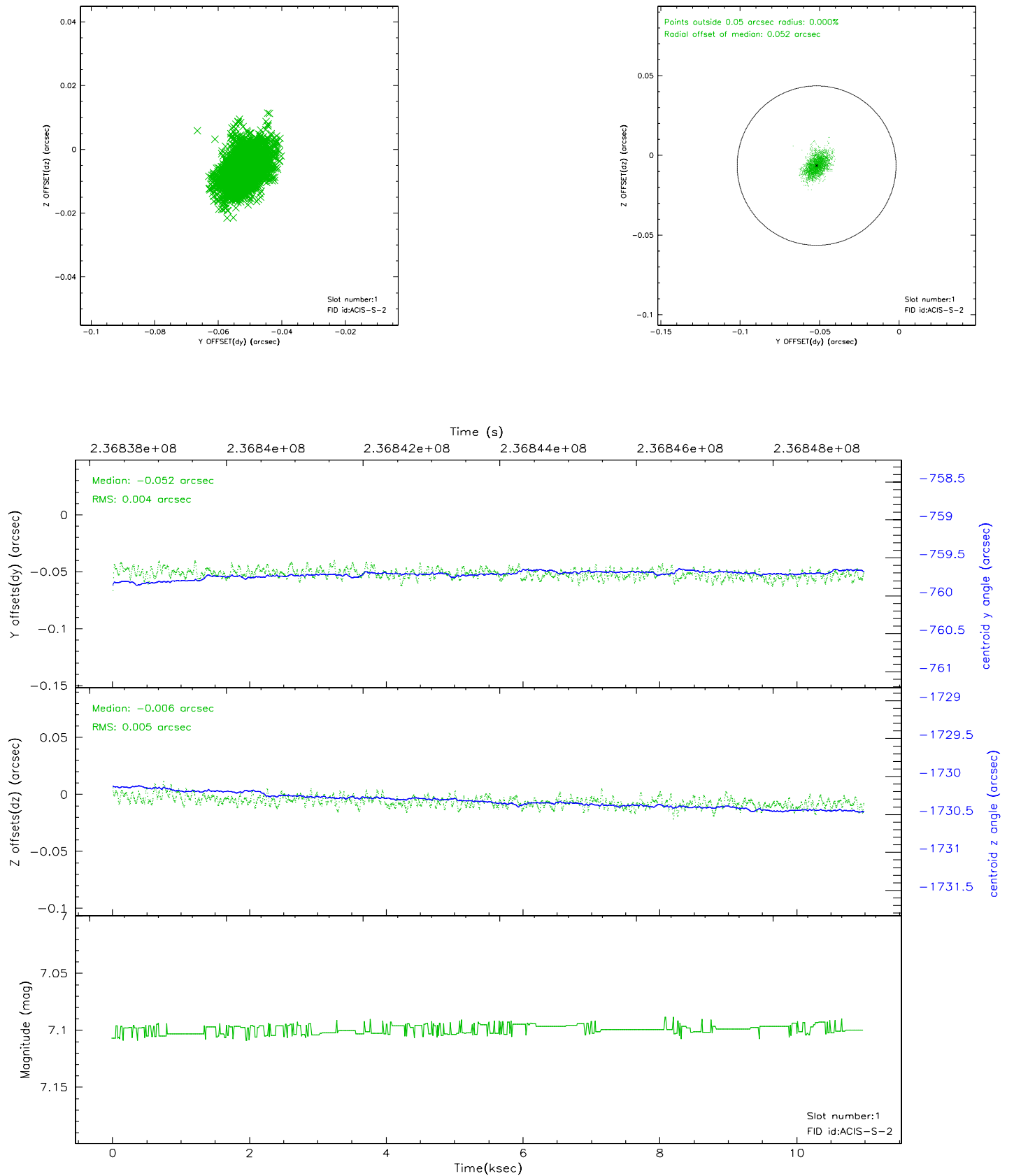


2.5 FID Slots

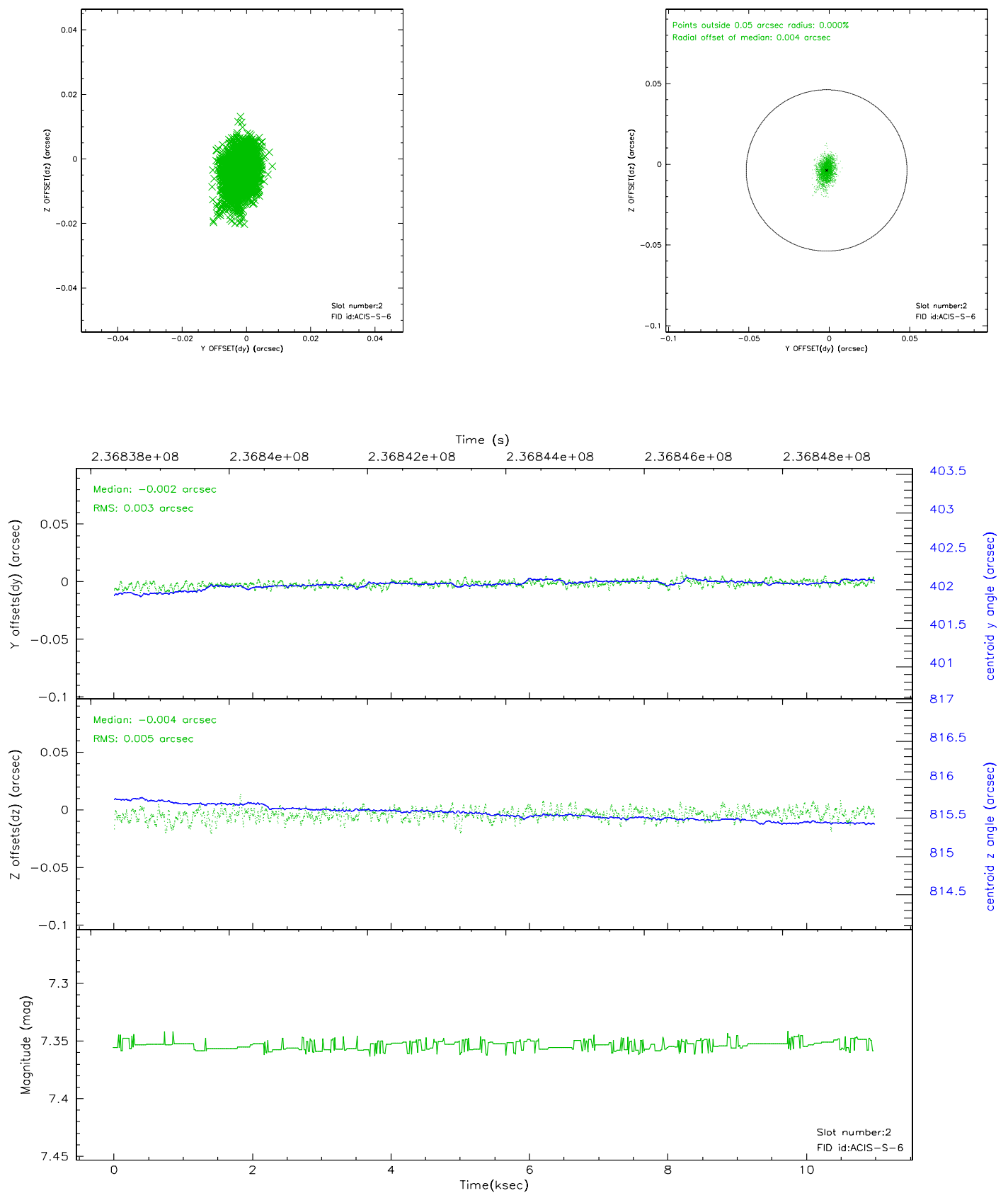
2.5.1 Slot 0



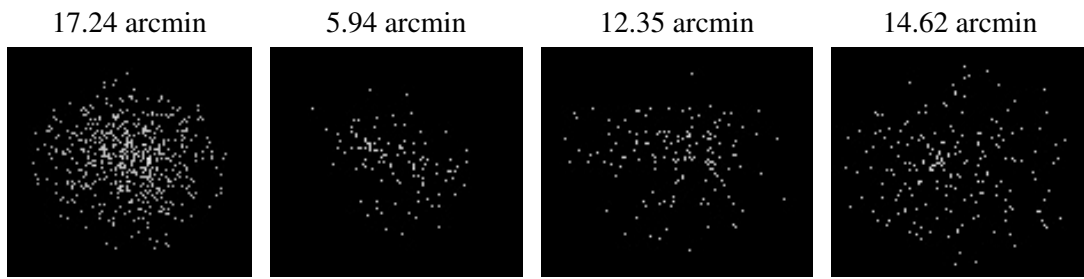
2.5.2 Slot 1



2.5.3 Slot 2



3 Point Sources



A Summary

A.1 Status

V&V Scientist	Beth Sundheim
V&V Date (YYYY-MM-DD)	2006.03.13
V&V Edition	1
V&V Disposition and Status	OK
V&V Charge Time	10.80639

A.2 Comments