

V&V Reference Report

L2 ASCDS Version : 7.6.7.1

Observation 6323 - L2 Version 002
Chandra X-Ray Center

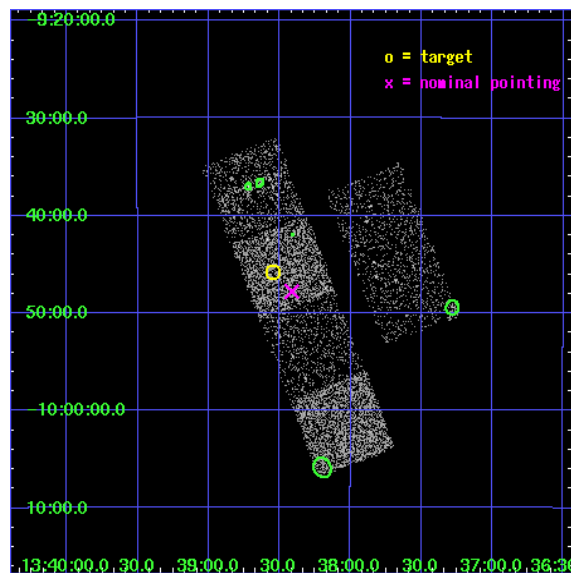
L2 Processing Date : Mar 12 2006

Contents

1	Front	2
2	OBI	3
2.1	OBI	3
2.1.1	Images	3
2.1.2	Bias	3
2.1.3	Parameters	4
2.1.4	Events	4
2.2	Compared Parameters	5
2.3	Aspect	6
2.4	Star Slots	9
2.4.1	Slot 3	9
2.4.2	Slot 4	10
2.4.3	Slot 5	11
2.4.4	Slot 6	12
2.4.5	Slot 7	13
2.5	FID Slots	14
2.5.1	Slot 0	14
2.5.2	Slot 1	15
2.5.3	Slot 2	16
3	Point Sources	17
A	Summary	18
A.1	Status	18
A.2	Comments	18

1 Front

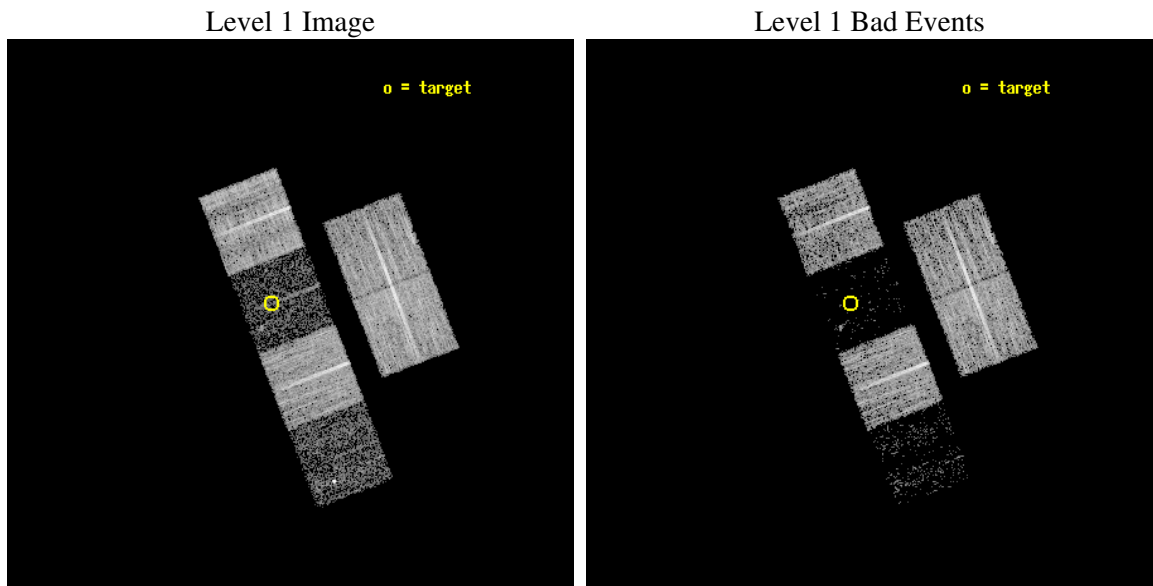
seq_num	100060
obs_id	6323
title	Comet 9P/Tempel 1 During the Deep Impact Encounter
observer	Dr. Carey Lisse
object	9P/Tempel 1
dtcycle	0
cycle	P
ra_targ	204.636428
dec_targ	-9.763153
ra_nom	204.60334581996
dec_nom	-9.7964778523892
roll_nom	248.87837443639
revision	2
ontime	7187.1999732256
livetime	7096.1913195524
ontime2	7187.1999732256
ontime3	7187.1999732256
ontime5	7187.1999732256
ontime6	7187.1999732256
ontime7	7187.1999732256
ontime8	7187.1999732256
l2events	10236



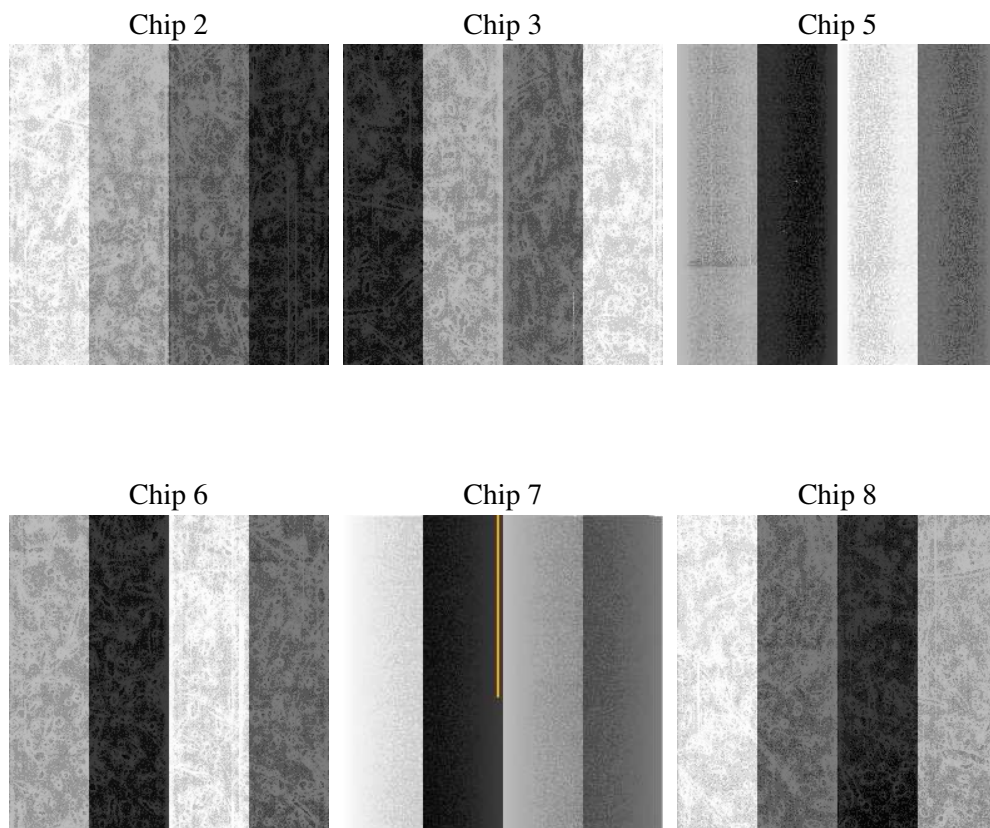
2 OBI

2.1 OBI

2.1.1 Images



2.1.2 Bias



2.1.3 Parameters

obi_num	0
ascdsver	7.6.7.1
caldsver	3.2.1
date	2006-03-12T03:39:08
revision	2

sched_exp_time	7000.000000
ontime	7509.403173238
ontime2	7509.4031533301
ontime3	7509.403173238
ontime5	7509.403173238
ontime6	7509.403173238
ontime7	7509.403173238
ontime8	7509.4031533301
l1events	153006

2.1.4 Events

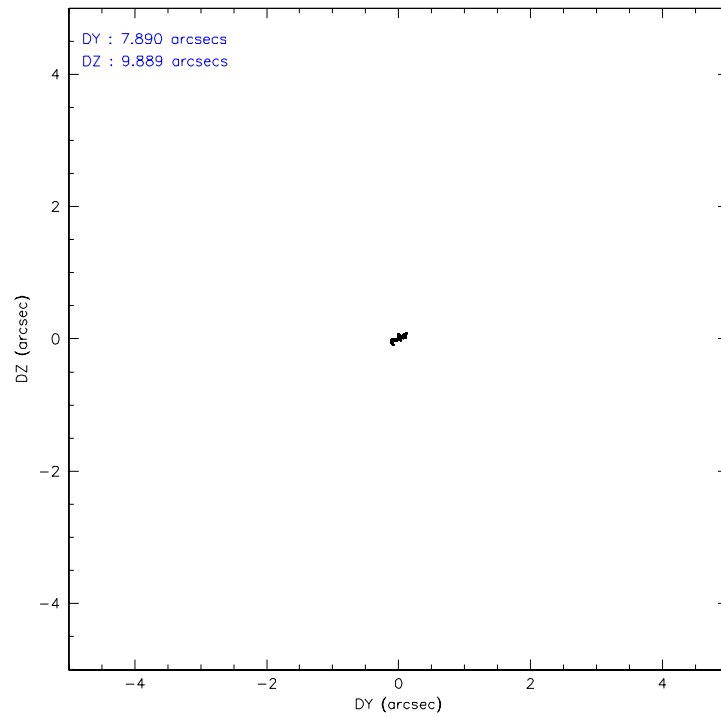
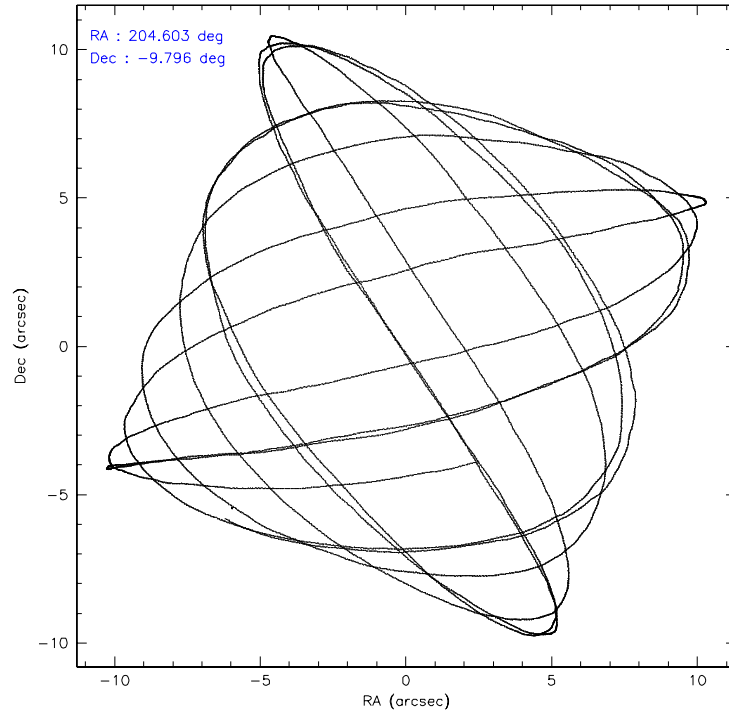
	ccd 2	ccd 3	ccd 5	ccd 6	ccd 7	ccd 8
level 1 events	38875	31867	6351	33947	4573	37393
rejected events	37304	30838	2244	32666	1040	28117
rejected %	95%	96%	35%	96%	22%	75%

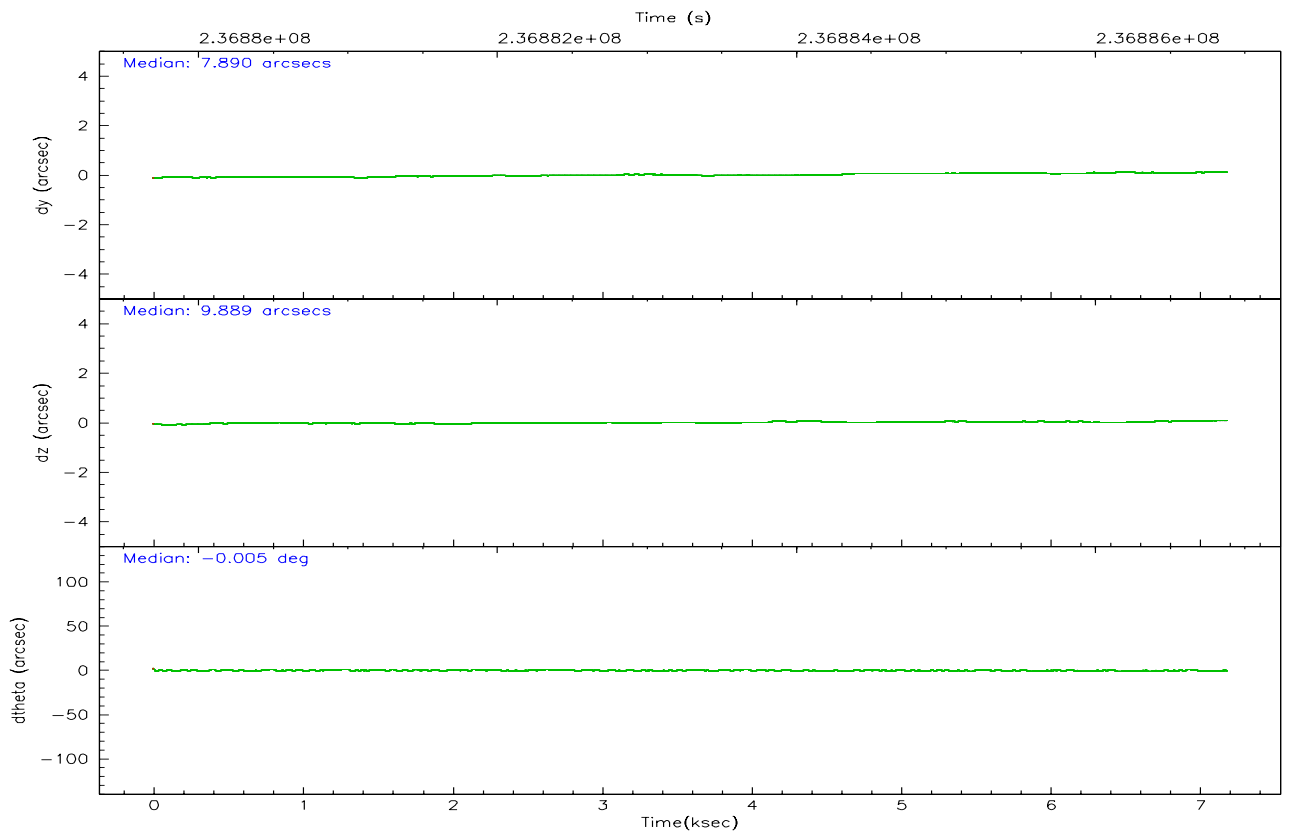
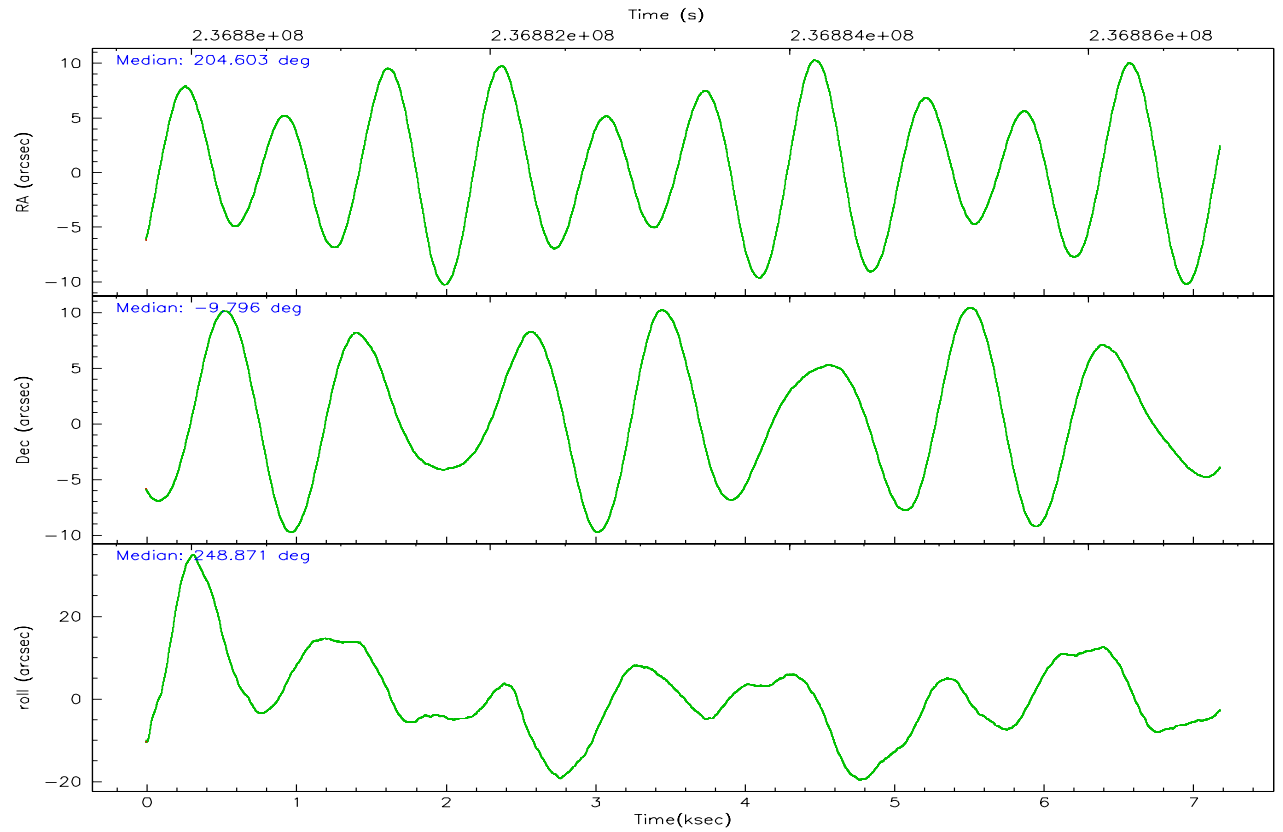
	ccd 2	ccd 3	ccd 5	ccd 6	ccd 7	ccd 8
grade 0 events	686	489	1257	594	905	2612
	1%	1%	19%	1%	19%	6%
grade 1 events	14	9	13	5	16	24
	0%	0%	0%	0%	0%	0%
grade 2 events	381	130	1641	259	1256	2176
	0%	0%	25%	0%	27%	5%
grade 3 events	205	185	453	200	528	1186
	0%	0%	7%	0%	11%	3%
grade 4 events	186	168	427	204	521	1061
	0%	0%	6%	0%	11%	2%
grade 5 events	50	31	297	29	117	212
	0%	0%	4%	0%	2%	0%
grade 6 events	175	108	509	92	467	2689
	0%	0%	8%	0%	10%	7%
grade 7 events	37178	30747	1754	32564	763	27433
	95%	96%	27%	95%	16%	73%

2.2 Compared Parameters

Parameter	Planned	Actual	Parameter	Planned	Actual
Instrument	ACIS	ACIS	Obspar format version number	6	6
Detector	ACIS-235678	ACIS-235678	Obspar file type	PREDICTED	ACTUAL
Grating	NONE	NONE	Obspar update status	NONE	UPDATED
Data mode	VFAINT	VFAINT	On-chip summing requested	N	N
Observation mode	POINTING	POINTING	Subarray requested	NONE	NONE
Pointing RA	204.598701	204.6033458199591	Alternating exposures requested	N	N
Pointing Dec	-9.769601	-9.796477852389234	Primary exposure time	0.000000	3.2
Pointing Roll	248.720967	248.8783744363868			
SIM focus pos (mm)	-0.684267	-0.6828225247311905			
SIM defocus (mm)	0	0.001444936568705701			
SIM translation stage pos (mm)	-190.132523	-190.145094680475			
SIM translation stage offset (mm)	0	0.01257209746719923			
Observation start time	236879873.184000	236879497.26142			
Observation start date	2005-07-04T15:56:49	2005-07-04T15:51:37			
Observation end time	236886873.184000	236887006.92427			
Observation end date	2005-07-04T17:53:29	2005-07-04T17:56:46			
Read mode	TIMED	TIMED			

2.3 Aspect



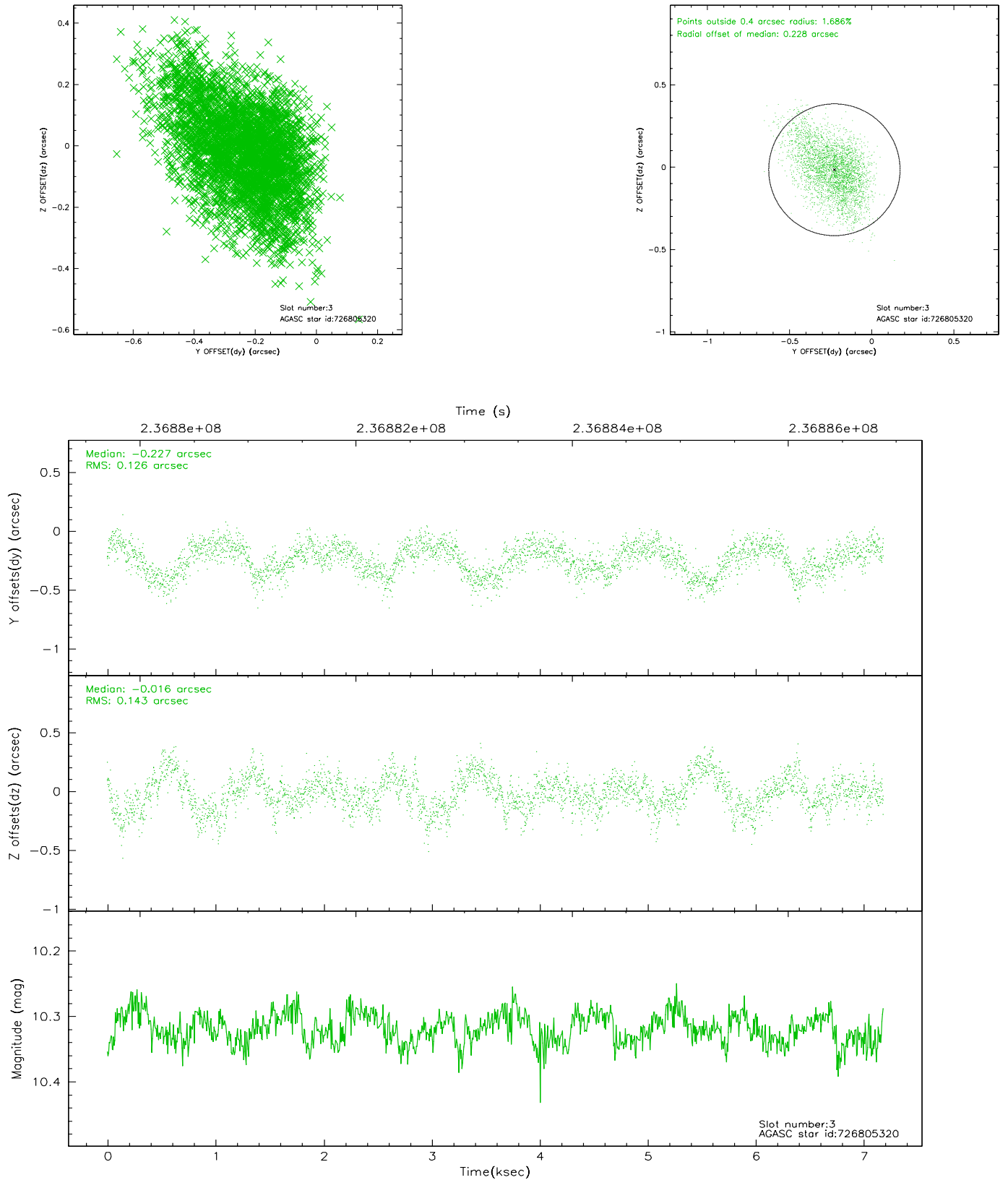


Slot Statistics

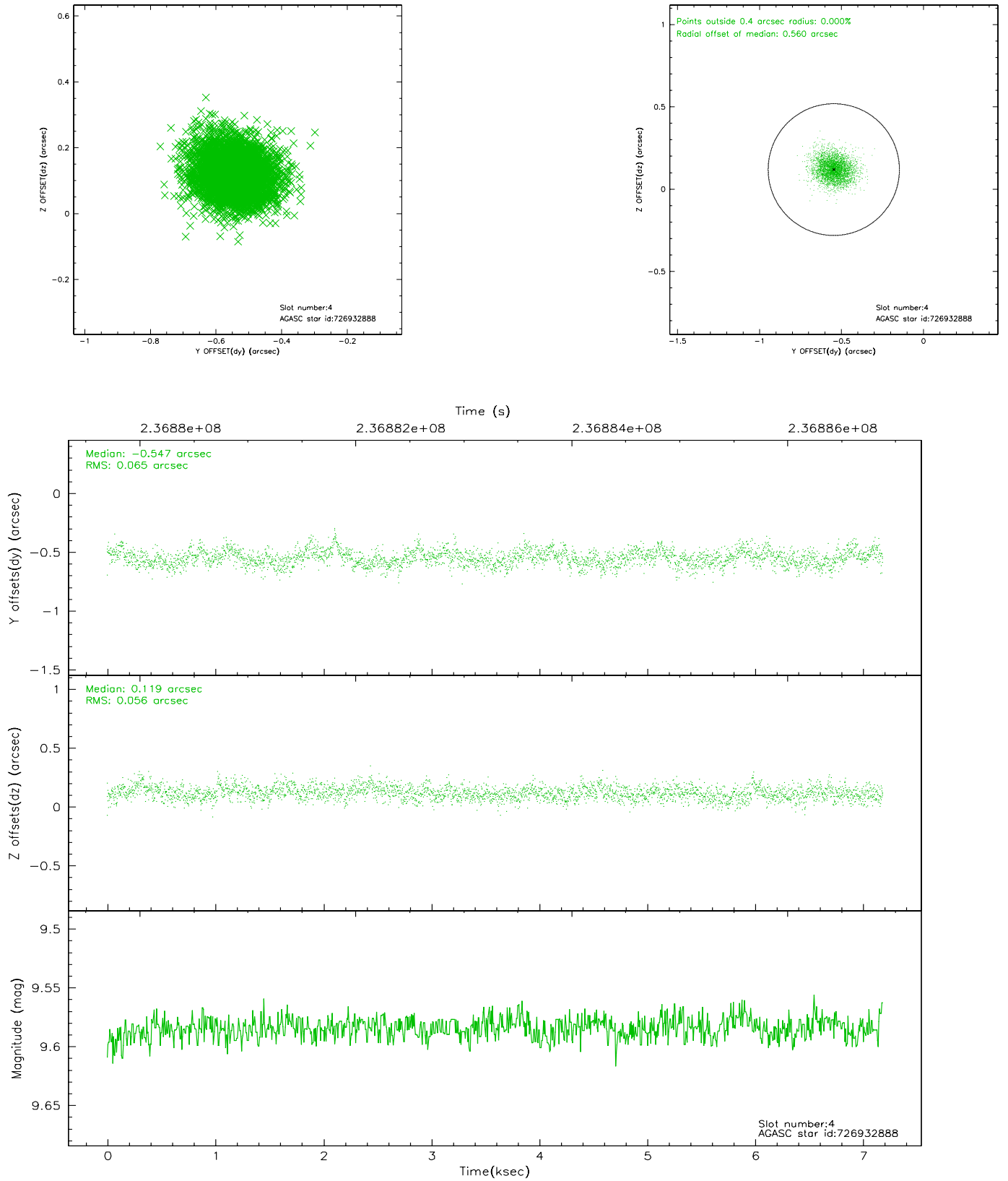
slot	status	id	mag	n_pts	med_dy	med_dz	dr1	dr2	ra	dec	mean_y	mean_z
0	FID	ACIS-S-2	7.10	1753	-0.029	-0.006	0.007	0.011	0.000000	0.000000	-760.66	-1731.06
1	FID	ACIS-S-4	7.21	1753	0.070	0.016	0.007	0.012	0.000000	0.000000	2152.31	176.68
2	FID	ACIS-S-5	7.23	1753	-0.071	-0.001	0.007	0.012	0.000000	0.000000	-1812.56	171.16
3	GUIDE	726805320	10.32	3500	-0.227	-0.016	0.199	0.339	204.212849	-9.734967	381.38	-1320.63
4	GUIDE	726932888	9.58	3506	-0.547	0.119	0.090	0.149	204.640397	-9.165404	-2080.78	-651.73
5	GUIDE	726935840	9.52	3504	0.680	-0.518	0.092	0.153	205.084608	-9.297514	-2209.00	991.51
6	GUIDE	727320712	10.43	3428	0.141	0.065	0.220	0.370	204.468965	-10.254166	1792.15	205.67
7	GUIDE	727321032	9.99	3493	-0.051	0.354	0.160	0.261	205.073686	-10.196206	821.84	2126.59

2.4 Star Slots

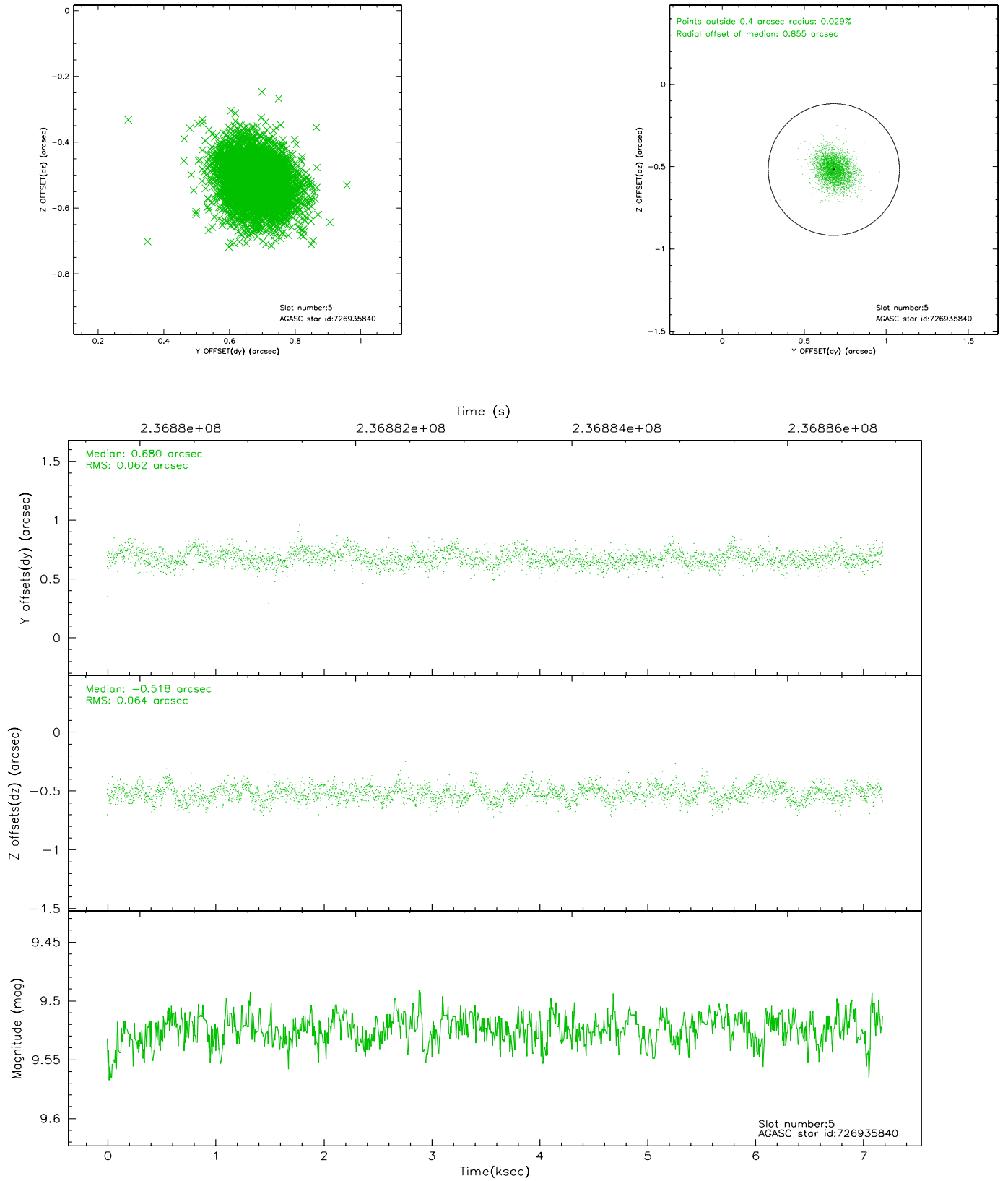
2.4.1 Slot 3



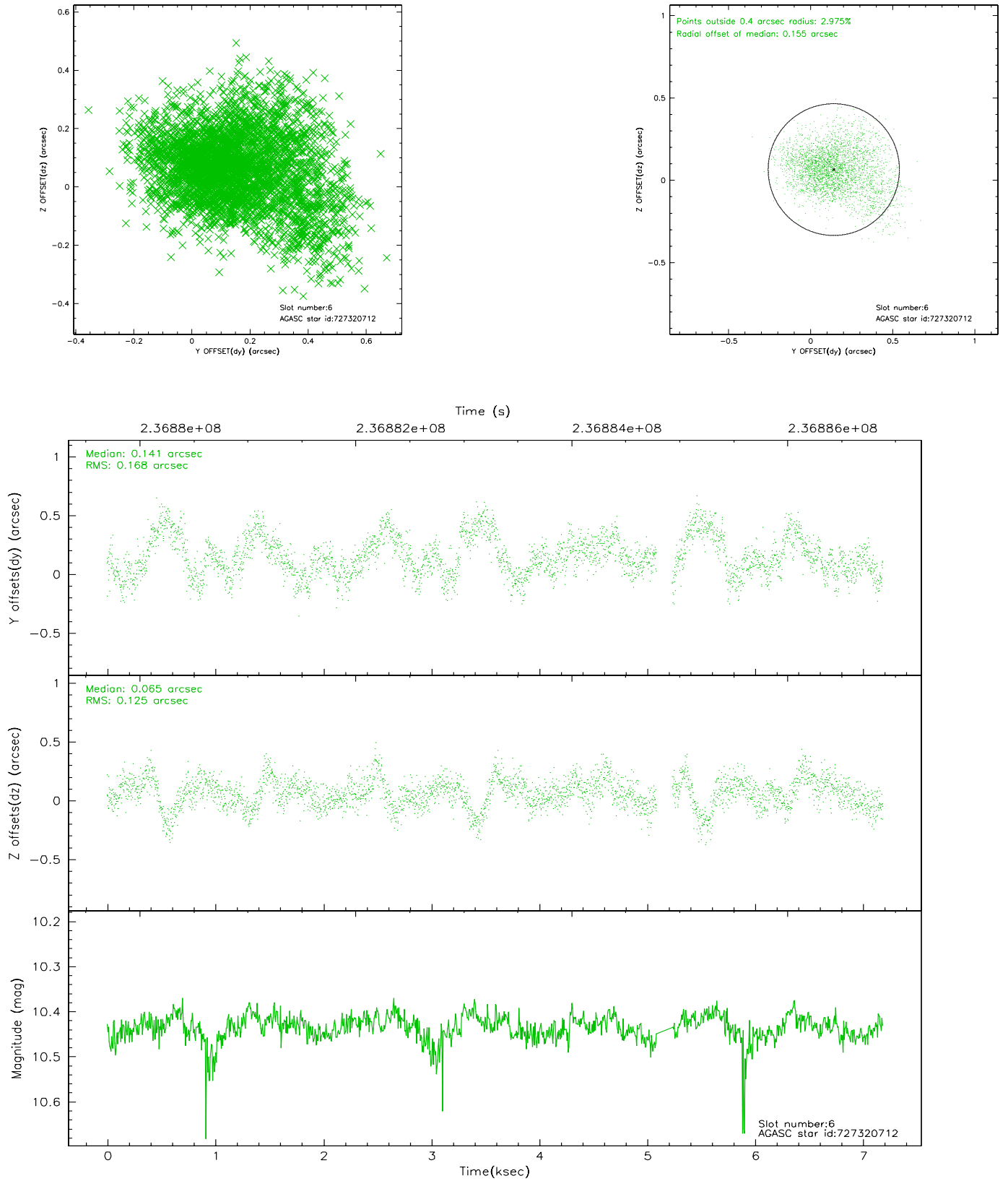
2.4.2 Slot 4



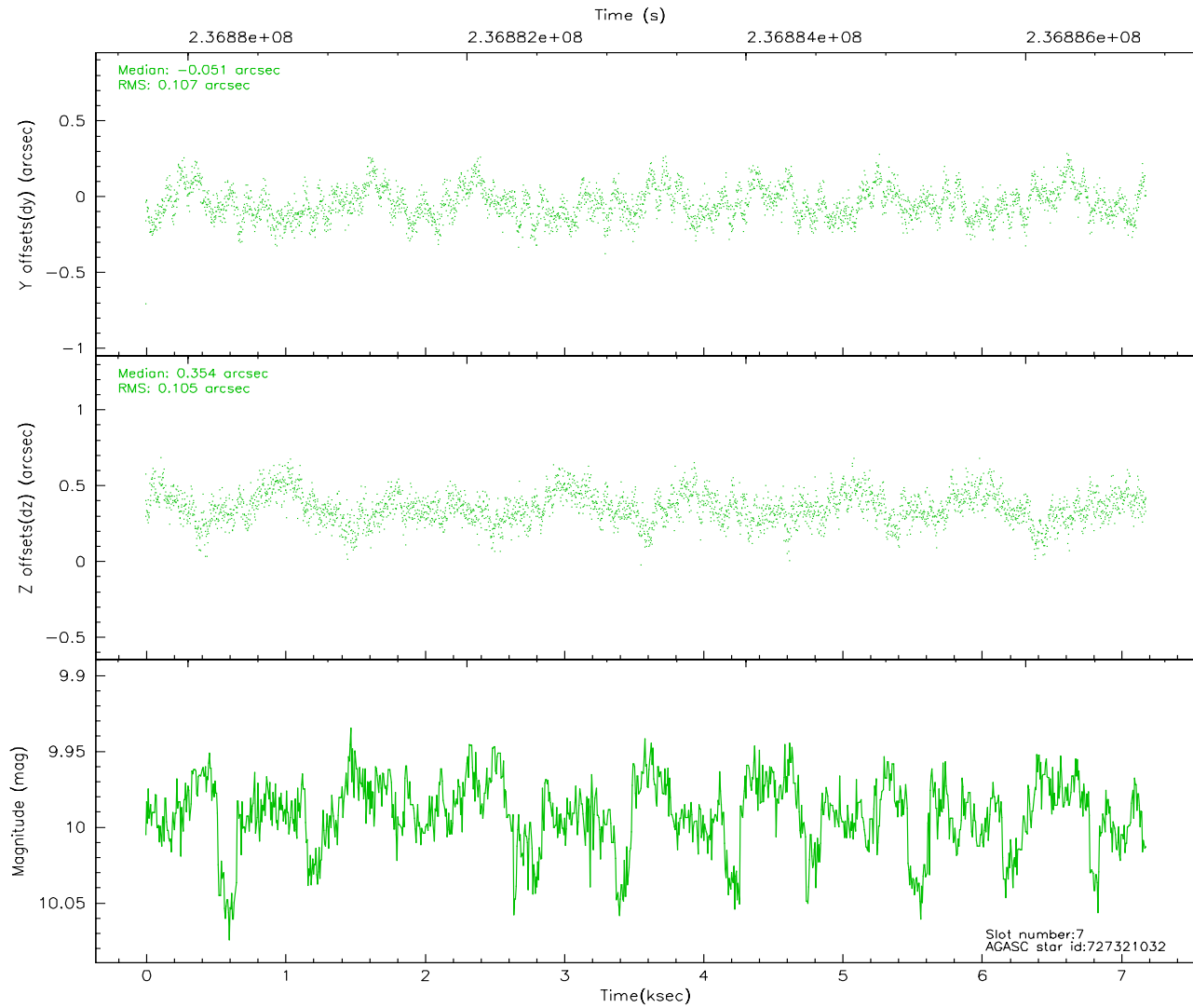
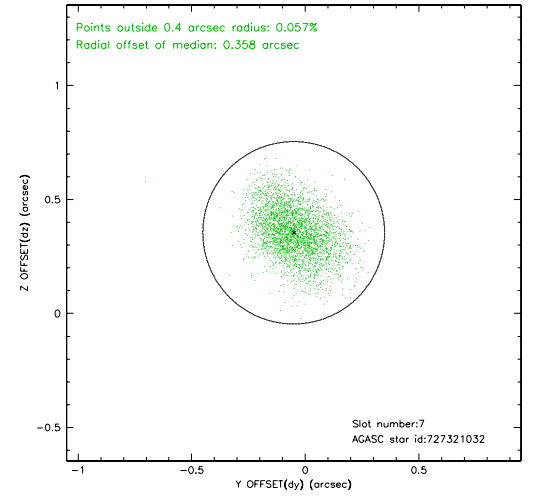
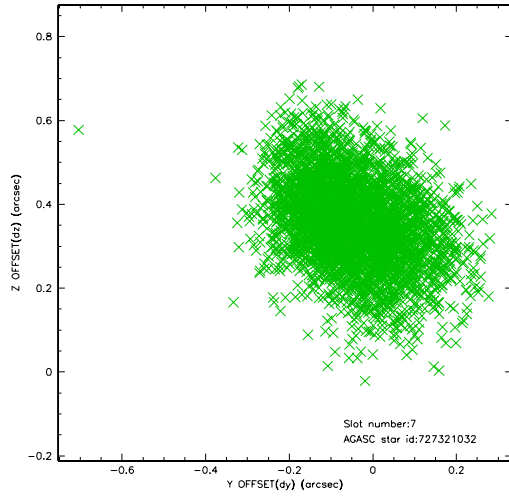
2.4.3 Slot 5



2.4.4 Slot 6

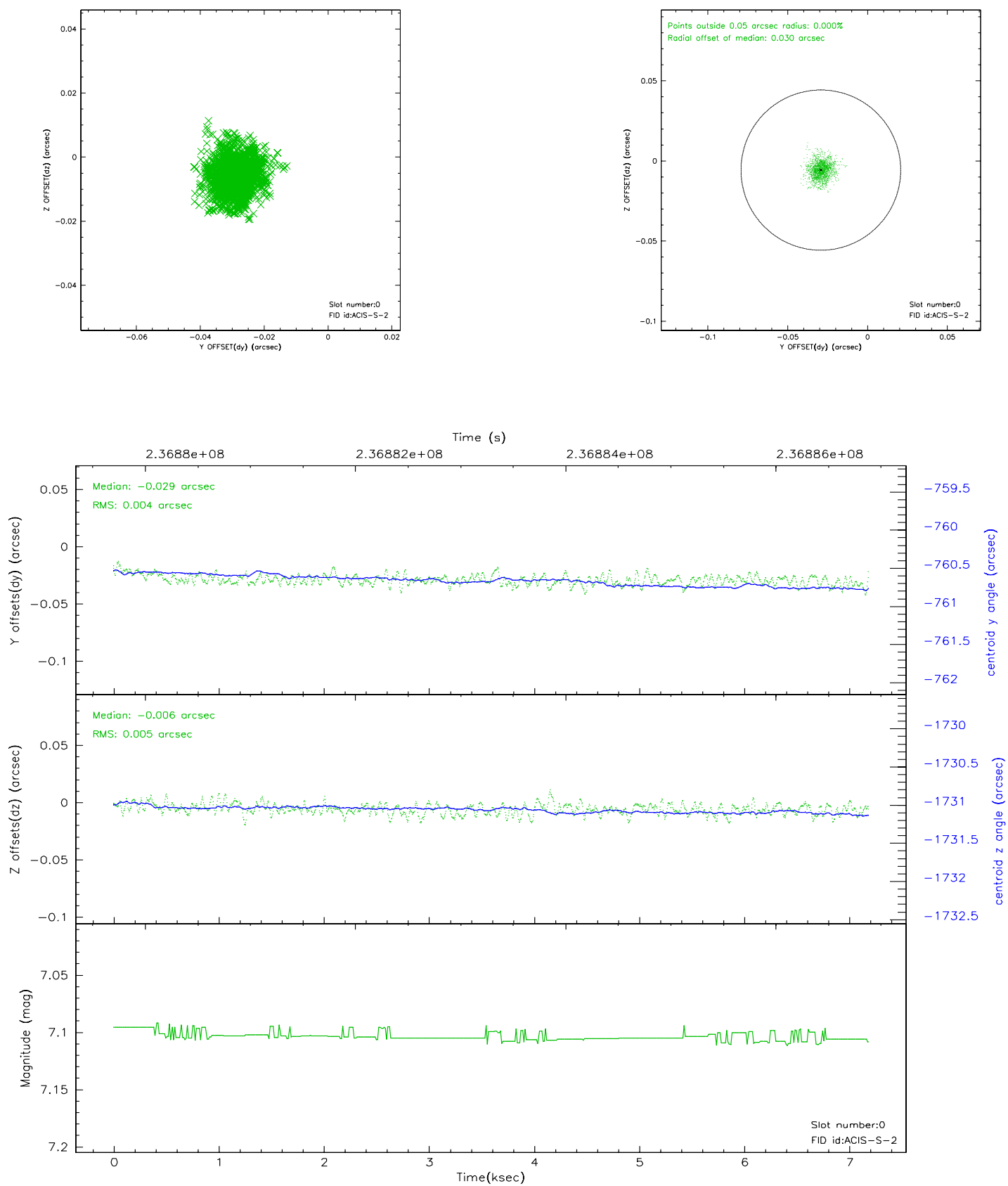


2.4.5 Slot 7

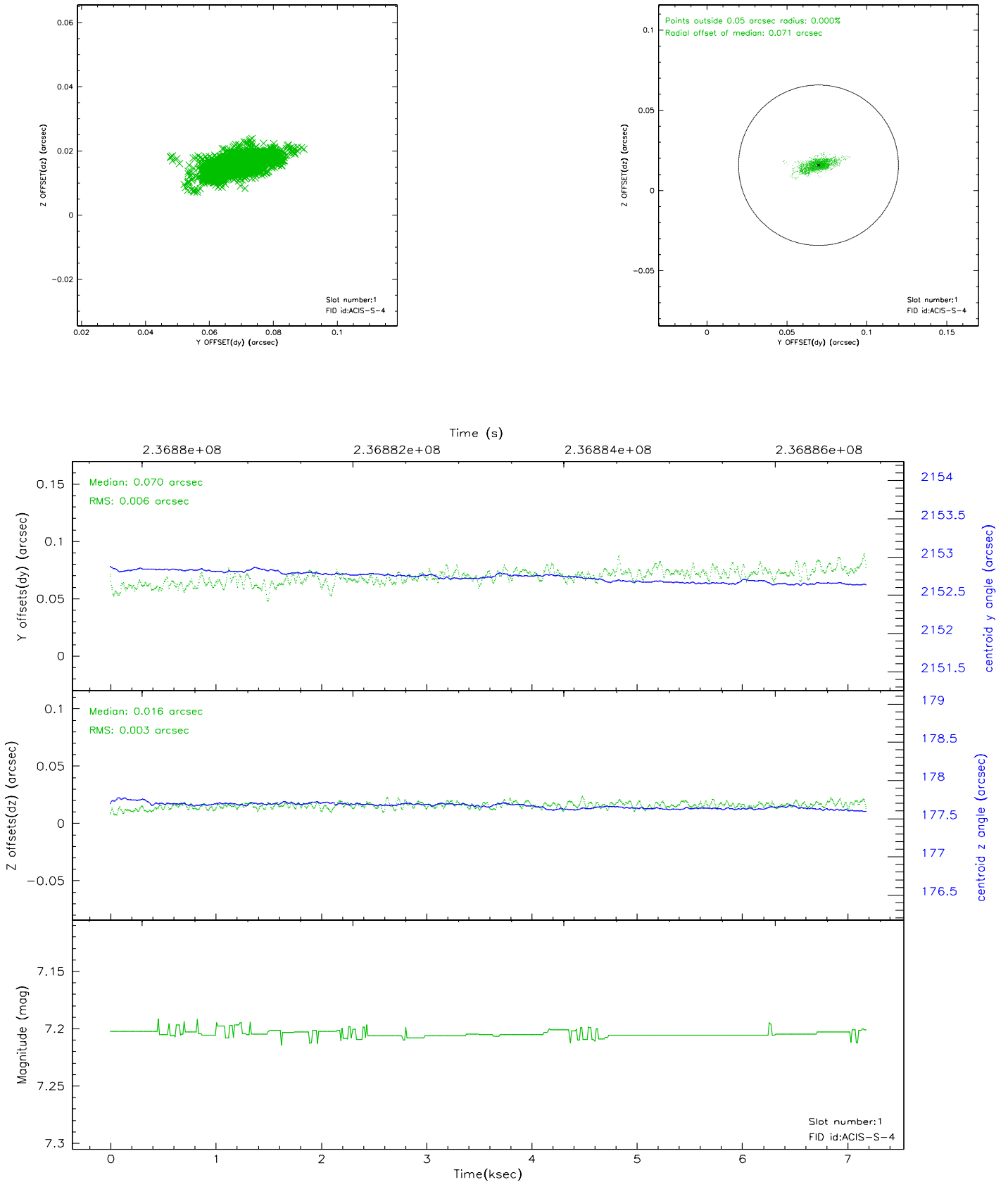


2.5 FID Slots

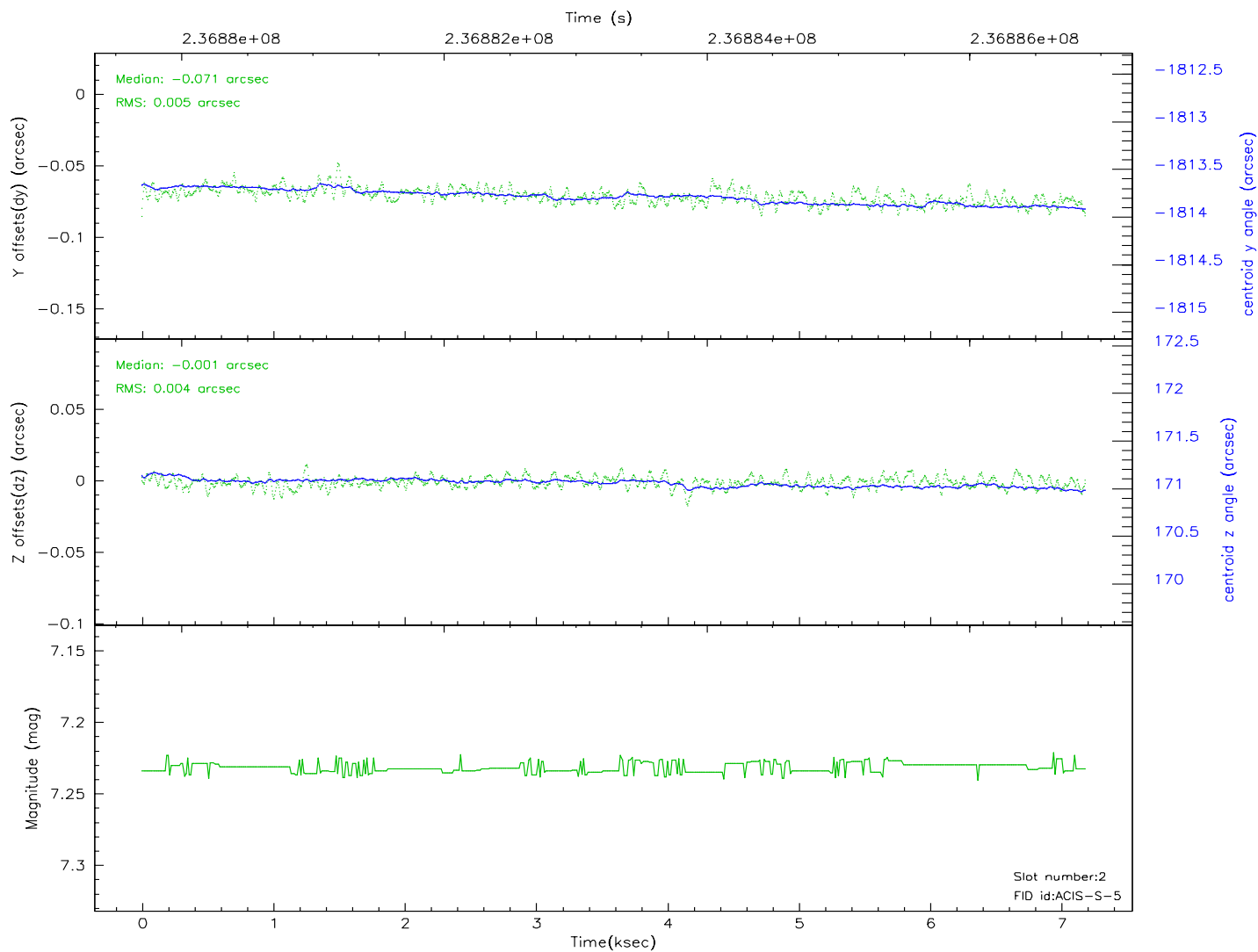
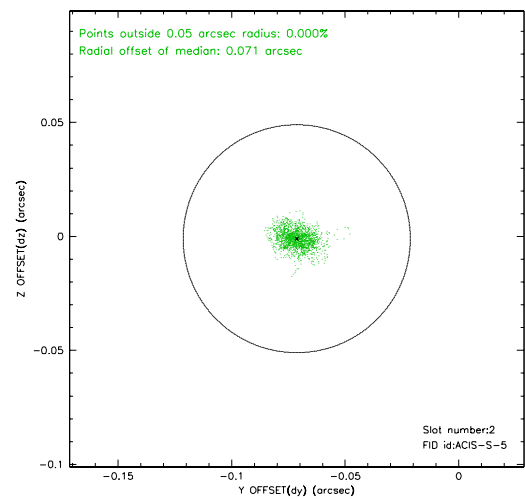
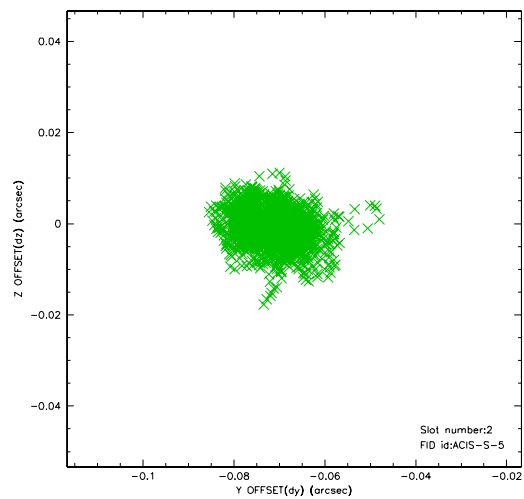
2.5.1 Slot 0



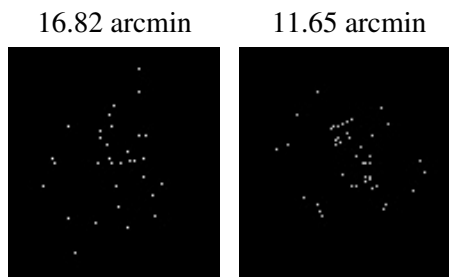
2.5.2 Slot 1



2.5.3 Slot 2



3 Point Sources



A Summary

A.1 Status

V&V Scientist	Jen Lauer
V&V Date (YYYY-MM-DD)	2006.03.13
V&V Edition	1
V&V Disposition and Status	OK
V&V Charge Time	7.187199

A.2 Comments

Target coordinates for all the Comet Tempel 1 observations were specified with the same values, which are not necessarily correct. The actual pointing of this observation is correct.