

V&V Reference Report

L2 ASCDS Version : 7.6.7.1

Observation 6321 - L2 Version 002
Chandra X-Ray Center

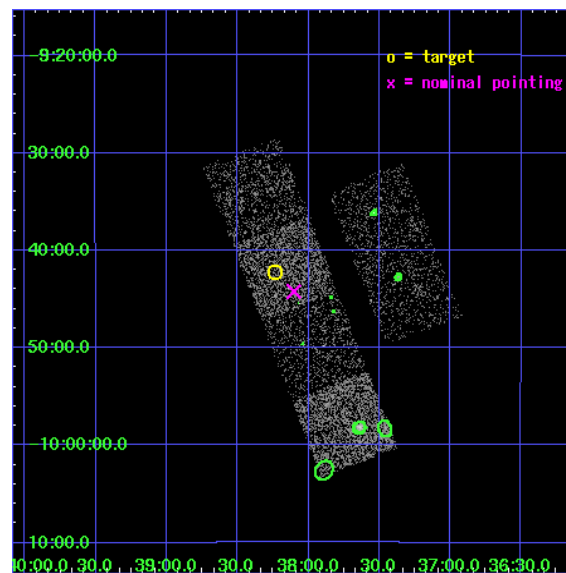
L2 Processing Date : Mar 11 2006

Contents

1	Front	2
2	OBI	3
2.1	OBI	3
2.1.1	Images	3
2.1.2	Bias	3
2.1.3	Parameters	4
2.1.4	Events	4
2.2	Compared Parameters	5
2.3	Aspect	6
2.4	Star Slots	9
2.4.1	Slot 3	9
2.4.2	Slot 4	10
2.4.3	Slot 5	11
2.4.4	Slot 6	12
2.4.5	Slot 7	13
2.5	FID Slots	14
2.5.1	Slot 0	14
2.5.2	Slot 1	15
2.5.3	Slot 2	16
3	Point Sources	17
A	Summary	18
A.1	Status	18
A.2	Comments	18

1 Front

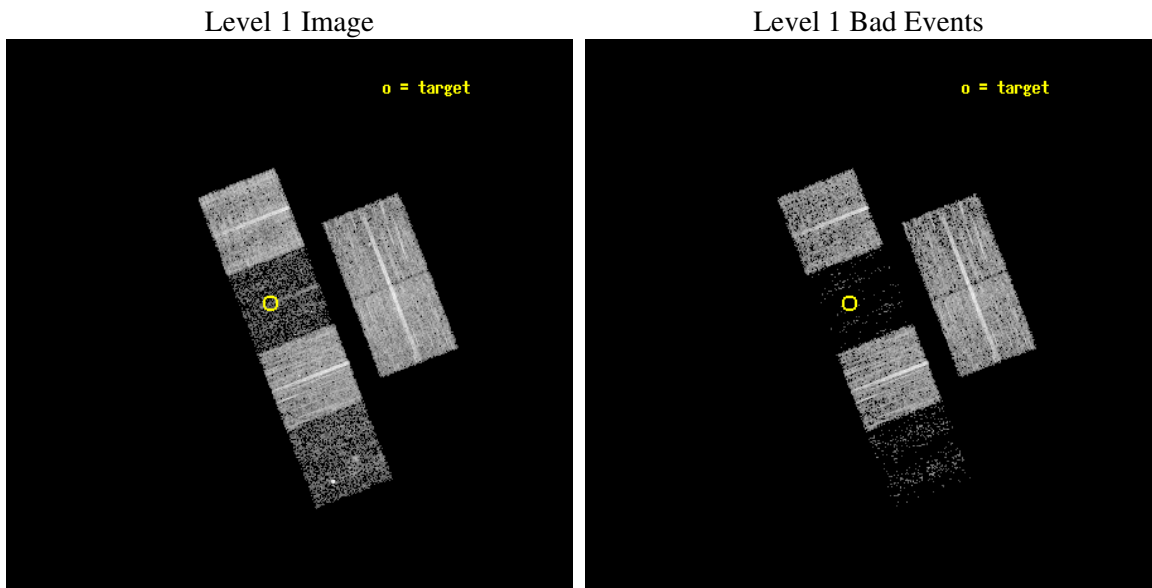
seq_num	100060
obs_id	6321
title	Comet 9P/Tempel 1 During the Deep Impact Encounter
observer	Dr. Carey Lisse
object	9P/Tempel 1
dtcycle	0
cycle	P
ra_targ	204.558817
dec_targ	-9.703807
ra_nom	204.52569987837
dec_nom	-9.7371150122068
roll_nom	248.8644000011
revision	2
ontime	7180.7999732494
livetime	7089.8723602295
ontime2	7180.7999732494
ontime3	7177.5589830577
ontime5	7180.7999732494
ontime6	7180.7999732494
ontime7	7180.7999732494
ontime8	7180.7999732494
l2events	10674



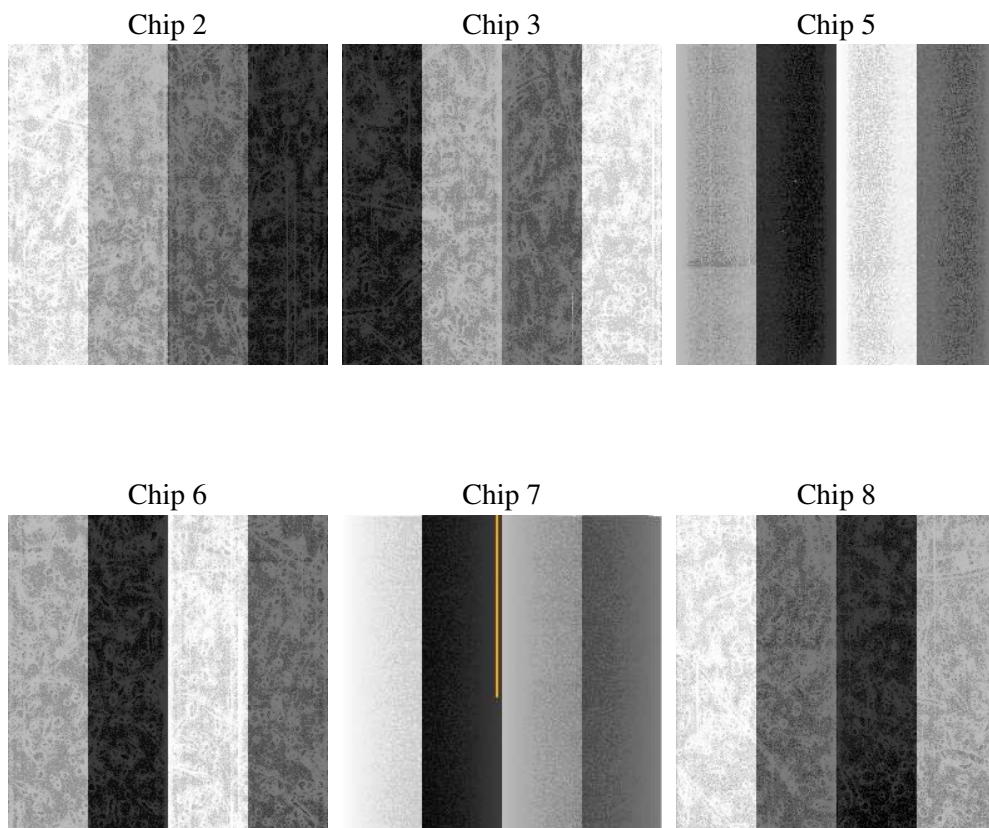
2 OBI

2.1 OBI

2.1.1 Images



2.1.2 Bias



2.1.3 Parameters

obi_num	0
ascdsver	7.6.7.1
caldsver	3.2.1
date	2006-03-12T03:39:13
revision	2

sched_exp_time	7000.000000
ontime	7512.6449634433
ontime2	7512.6449634433
ontime3	7509.4039732516
ontime5	7512.6449634433
ontime6	7512.6449634433
ontime7	7512.6449634433
ontime8	7512.6449634433
l1events	151009

2.1.4 Events

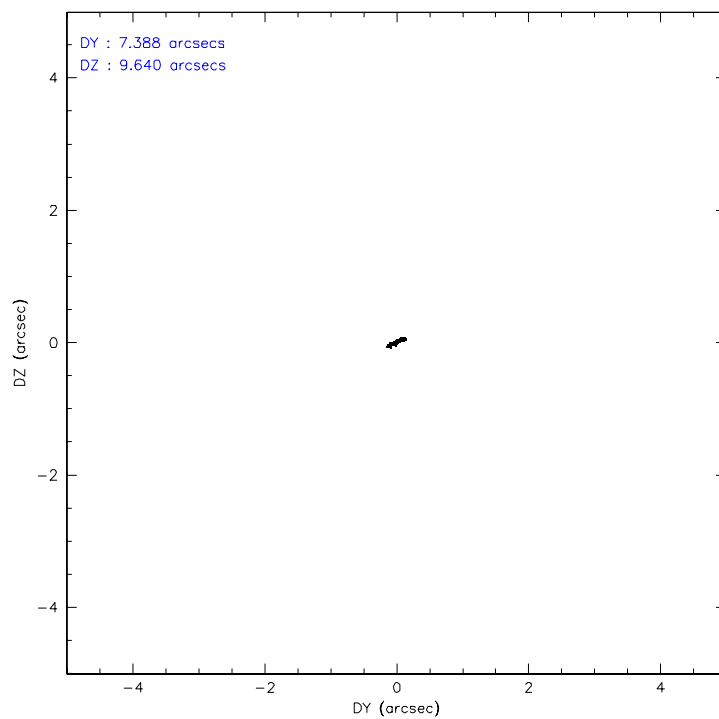
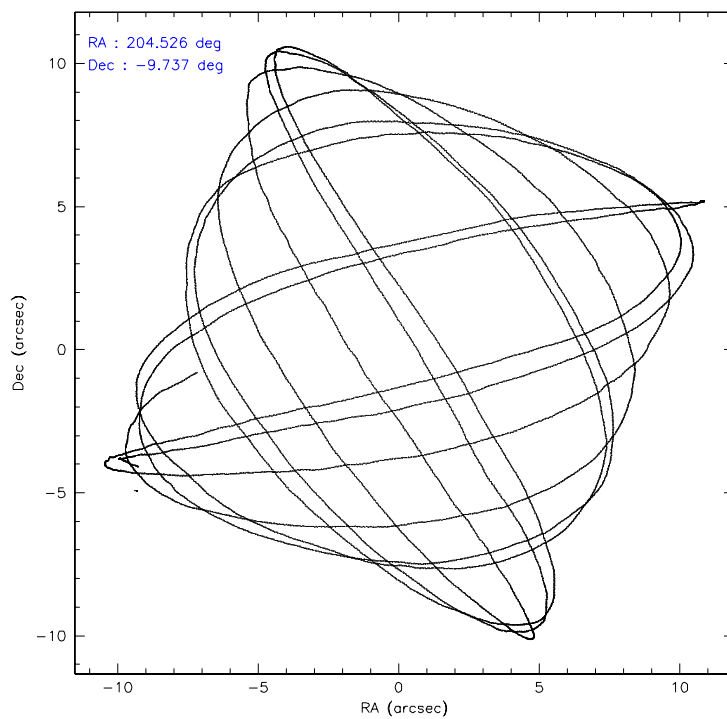
	ccd 2	ccd 3	ccd 5	ccd 6	ccd 7	ccd 8
level 1 events	37046	31439	6739	33938	4443	37404
rejected events	35587	30248	2335	32349	1052	28391
rejected %	96%	96%	34%	95%	23%	75%

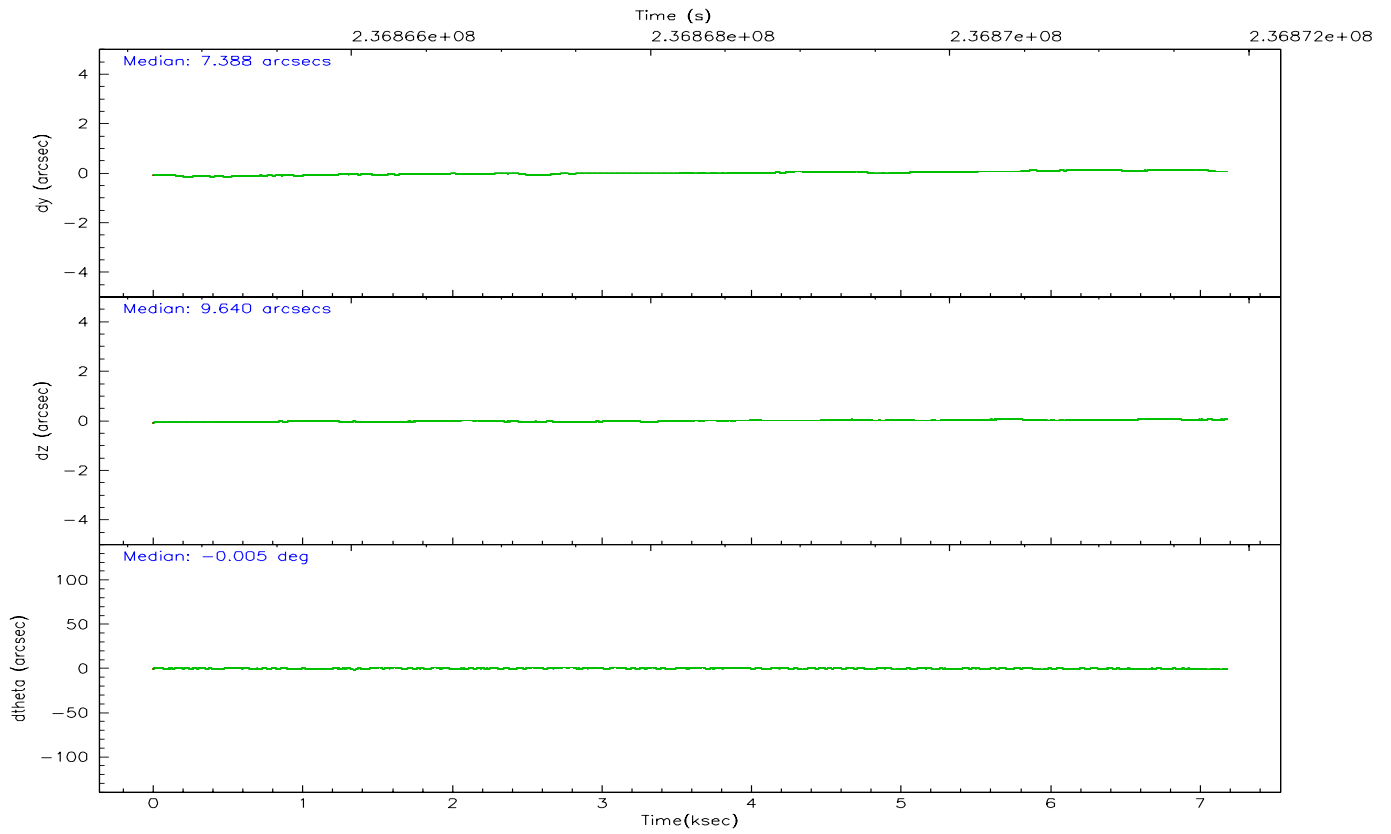
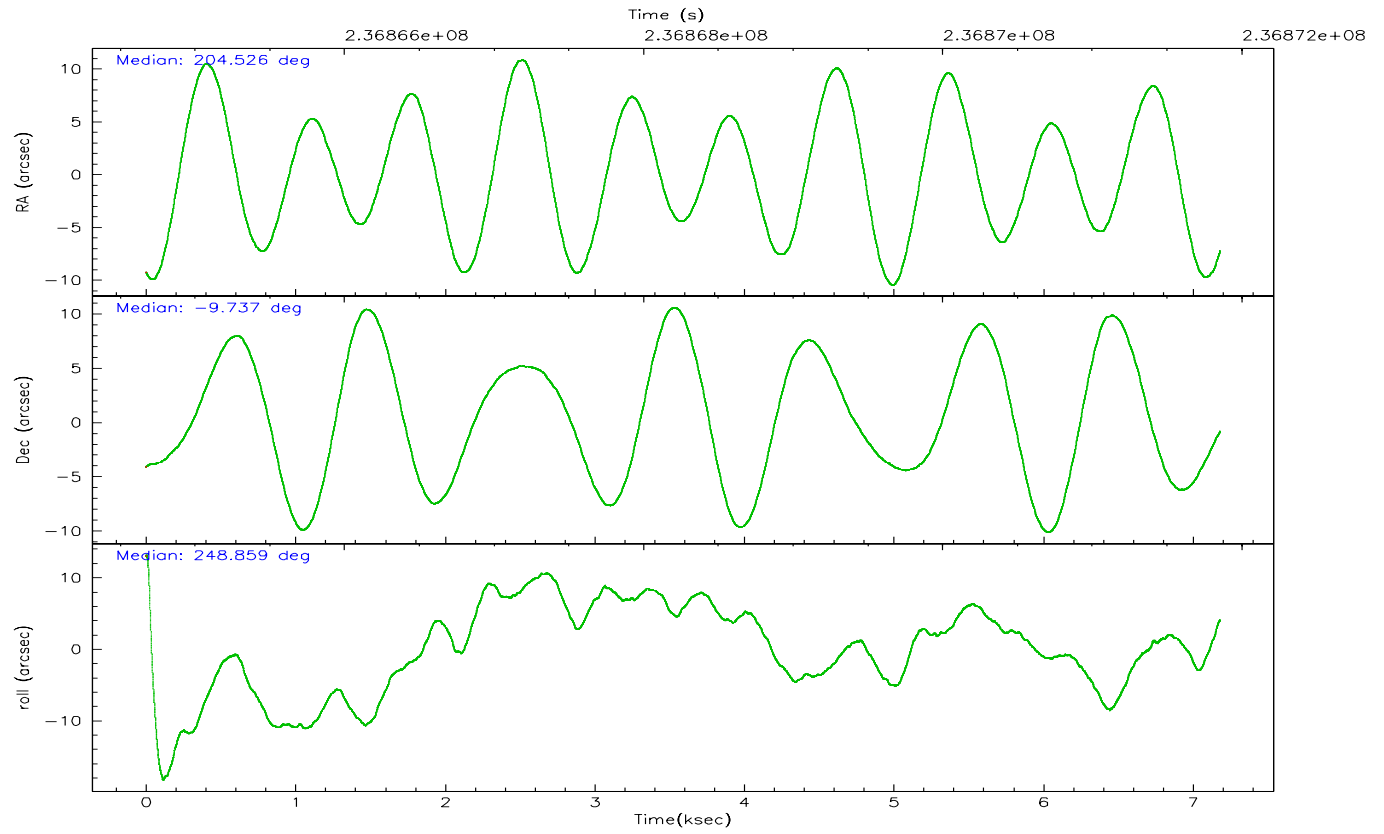
	ccd 2	ccd 3	ccd 5	ccd 6	ccd 7	ccd 8
grade 0 events	605	613	1312	812	871	2499
	1%	1%	19%	2%	19%	6%
grade 1 events	3	8	12	12	13	23
	0%	0%	0%	0%	0%	0%
grade 2 events	349	175	1799	303	1218	2309
	0%	0%	26%	0%	27%	6%
grade 3 events	180	181	474	226	488	1062
	0%	0%	7%	0%	10%	2%
grade 4 events	223	172	445	215	456	993
	0%	0%	6%	0%	10%	2%
grade 5 events	40	33	287	35	122	211
	0%	0%	4%	0%	2%	0%
grade 6 events	158	106	583	103	495	2691
	0%	0%	8%	0%	11%	7%
grade 7 events	35488	30151	1827	32232	780	27616
	95%	95%	27%	94%	17%	73%

2.2 Compared Parameters

Parameter	Planned	Actual	Parameter	Planned	Actual
Instrument	ACIS	ACIS	Obspar format version number	6	6
Detector	ACIS-235678	ACIS-235678	Obspar file type	PREDICTED	ACTUAL
Grating	NONE	NONE	Obspar update status	NONE	UPDATED
Data mode	VFAINT	VFAINT	On-chip summing requested	N	N
Observation mode	POINTING	POINTING	Subarray requested	NONE	NONE
Pointing RA	204.521096	204.5256998783654	Alternating exposures requested	N	N
Pointing Dec	-9.710248	-9.737115012206779	Primary exposure time	0.000000	3.2
Pointing Roll	248.706951	248.8644000011006			
SIM focus pos (mm)	-0.684267	-0.6828225247311905			
SIM defocus (mm)	0	0.001444936568705701			
SIM translation stage pos (mm)	-190.132523	-190.145094680475			
SIM translation stage offset (mm)	0	0.01257209746719923			
Observation start time	236864853.184000	236864477.42324			
Observation start date	2005-07-04T11:46:29	2005-07-04T11:41:17			
Observation end time	236871853.184000	236871987.59858			
Observation end date	2005-07-04T13:43:09	2005-07-04T13:46:27			
Read mode	TIMED	TIMED			

2.3 Aspect



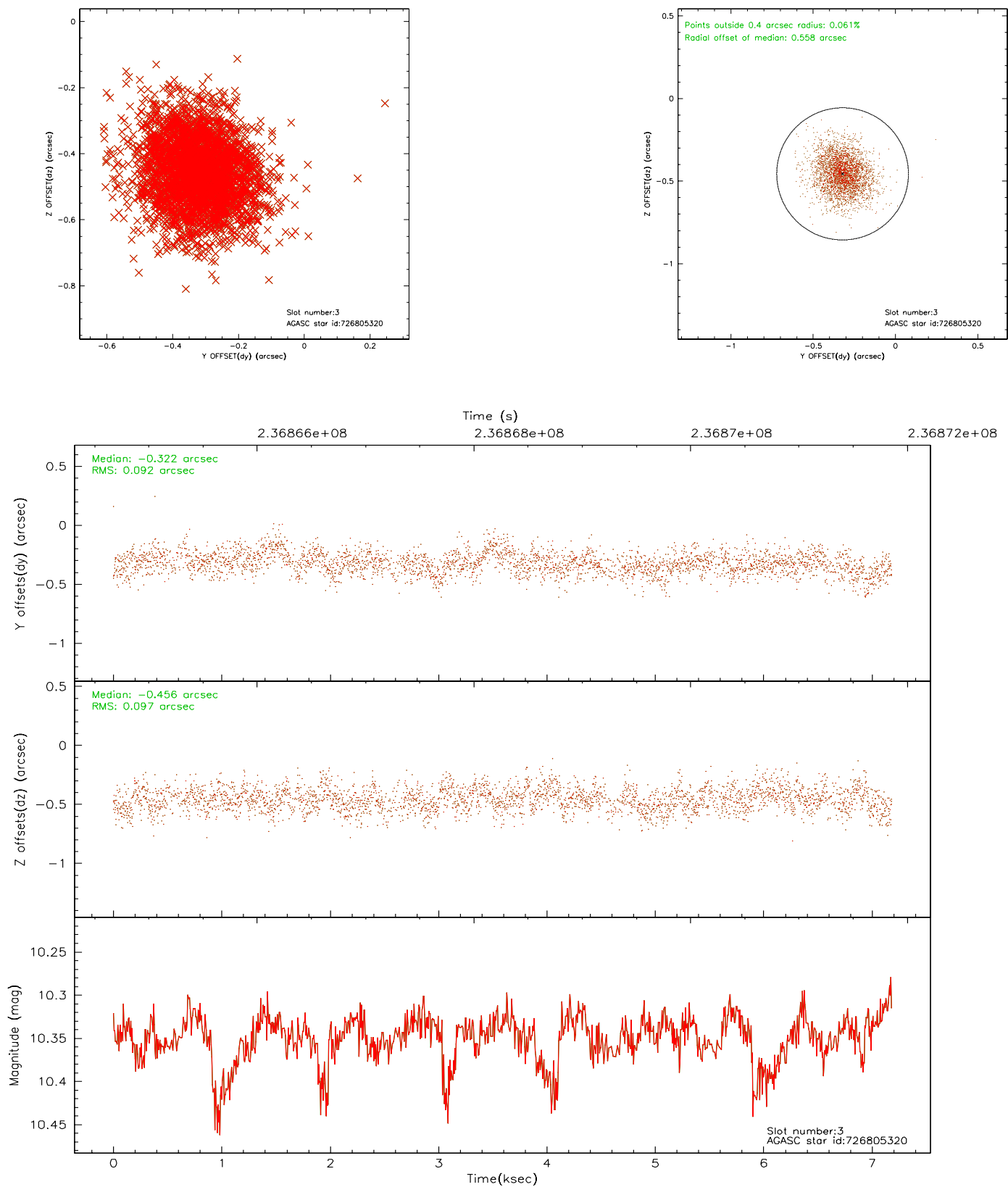


Slot Statistics

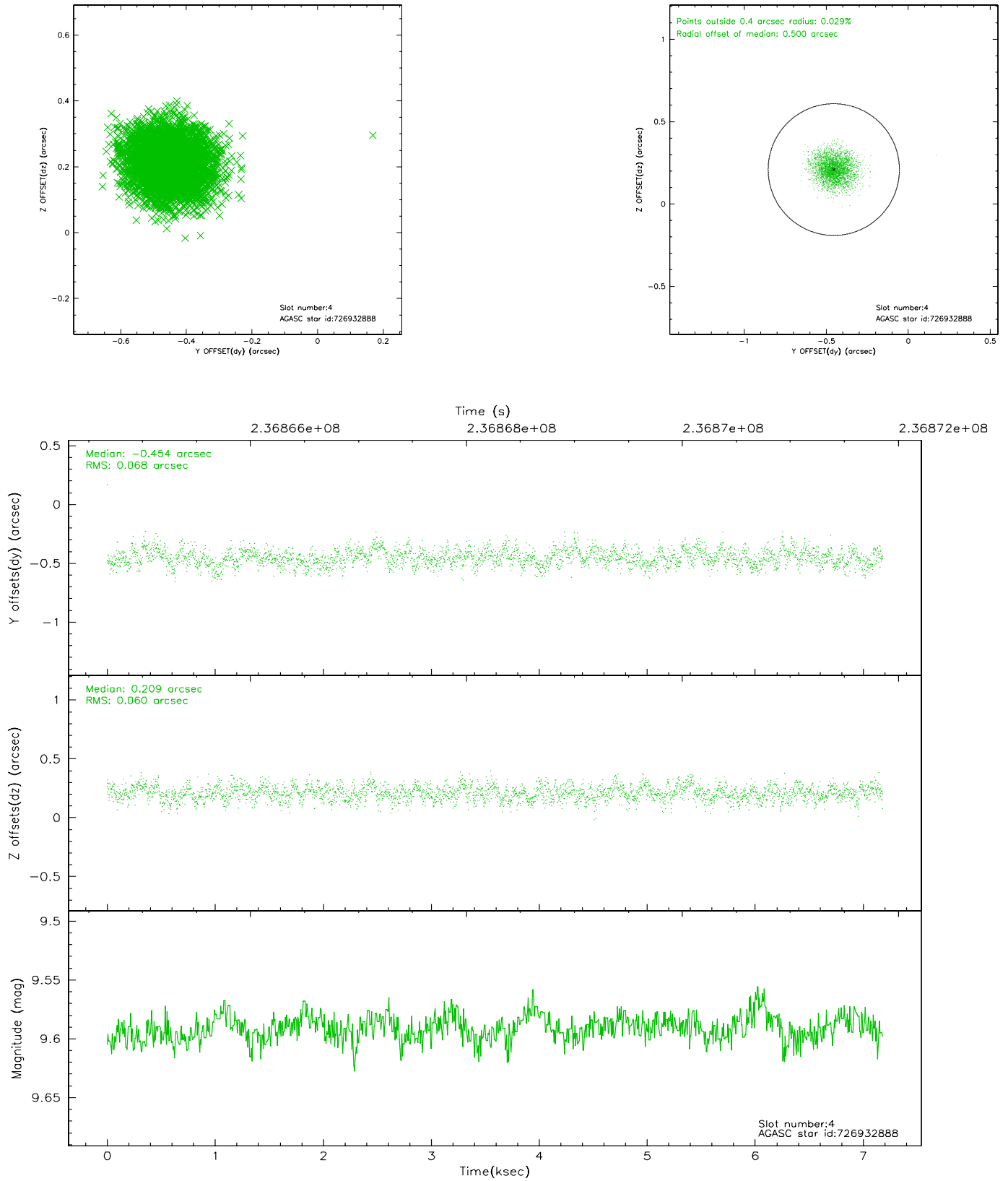
slot	status	id	mag	n_pts	med_dy	med_dz	dr1	dr2	ra	dec	mean_y	mean_z
0	FID	ACIS-S-2	7.10	1753	-0.031	-0.006	0.009	0.019	0.000000	0.000000	-760.15	-1730.80
1	FID	ACIS-S-4	7.21	1753	0.052	0.016	0.009	0.025	0.000000	0.000000	2152.81	176.94
2	FID	ACIS-S-5	7.23	1752	-0.054	-0.001	0.009	0.016	0.000000	0.000000	-1812.02	171.43
3	BAD	726805320	10.35	3305	-0.322	-0.456	0.142	0.234	204.212849	-9.734967	480.23	-985.85
4	GUIDE	726932888	9.59	3499	-0.454	0.209	0.098	0.155	204.640397	-9.165404	-1981.52	-317.33
5	GUIDE	726935840	9.52	3502	0.603	-0.501	0.147	0.237	205.084608	-9.297514	-2109.91	1325.84
6	GUIDE	727320712	10.44	3497	0.132	0.566	0.159	0.263	204.468965	-10.254166	1891.23	540.27
7	GUIDE	726804384	10.60	3492	0.023	0.156	0.173	0.275	204.057952	-9.038299	-1654.11	-2412.42

2.4 Star Slots

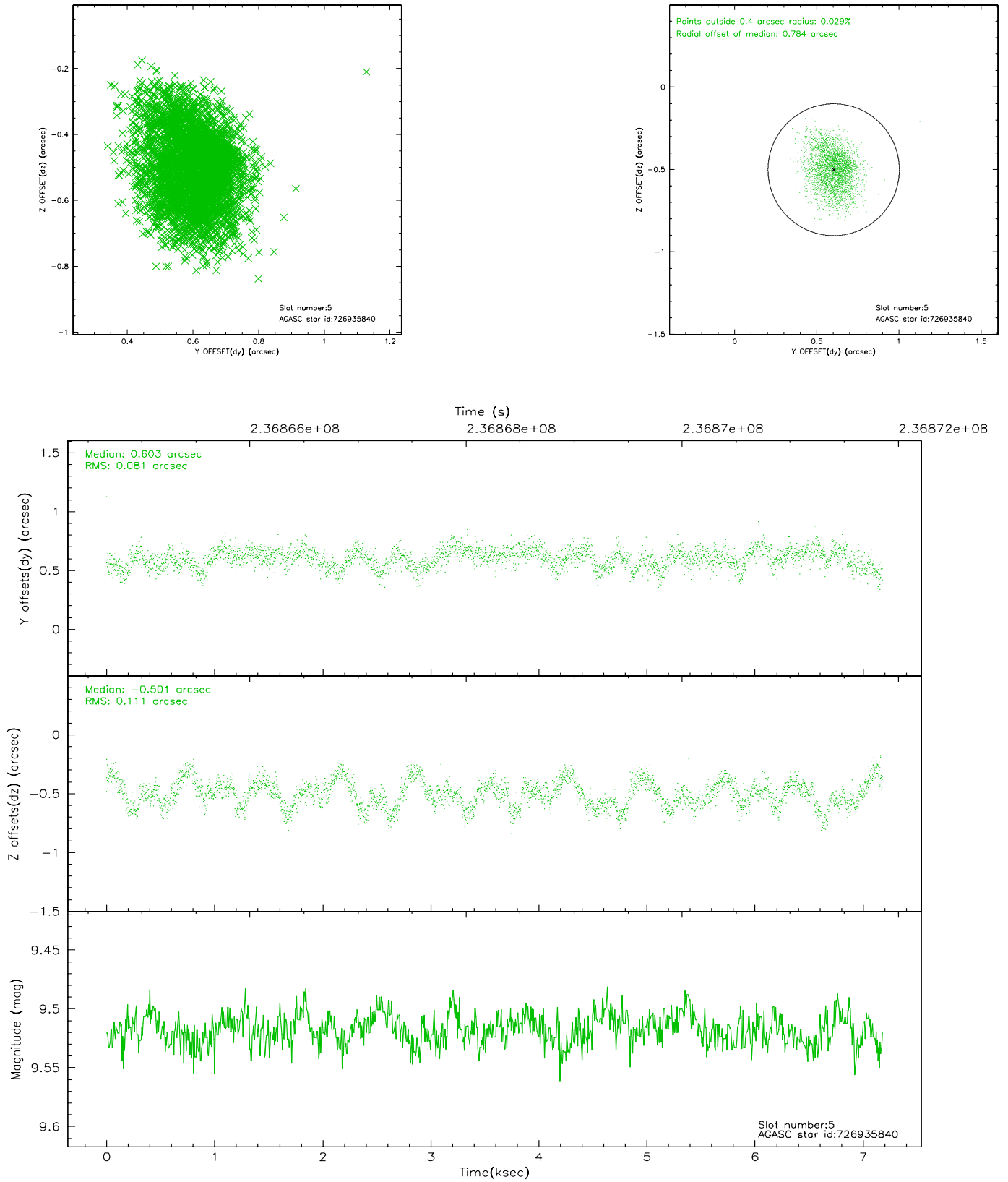
2.4.1 Slot 3



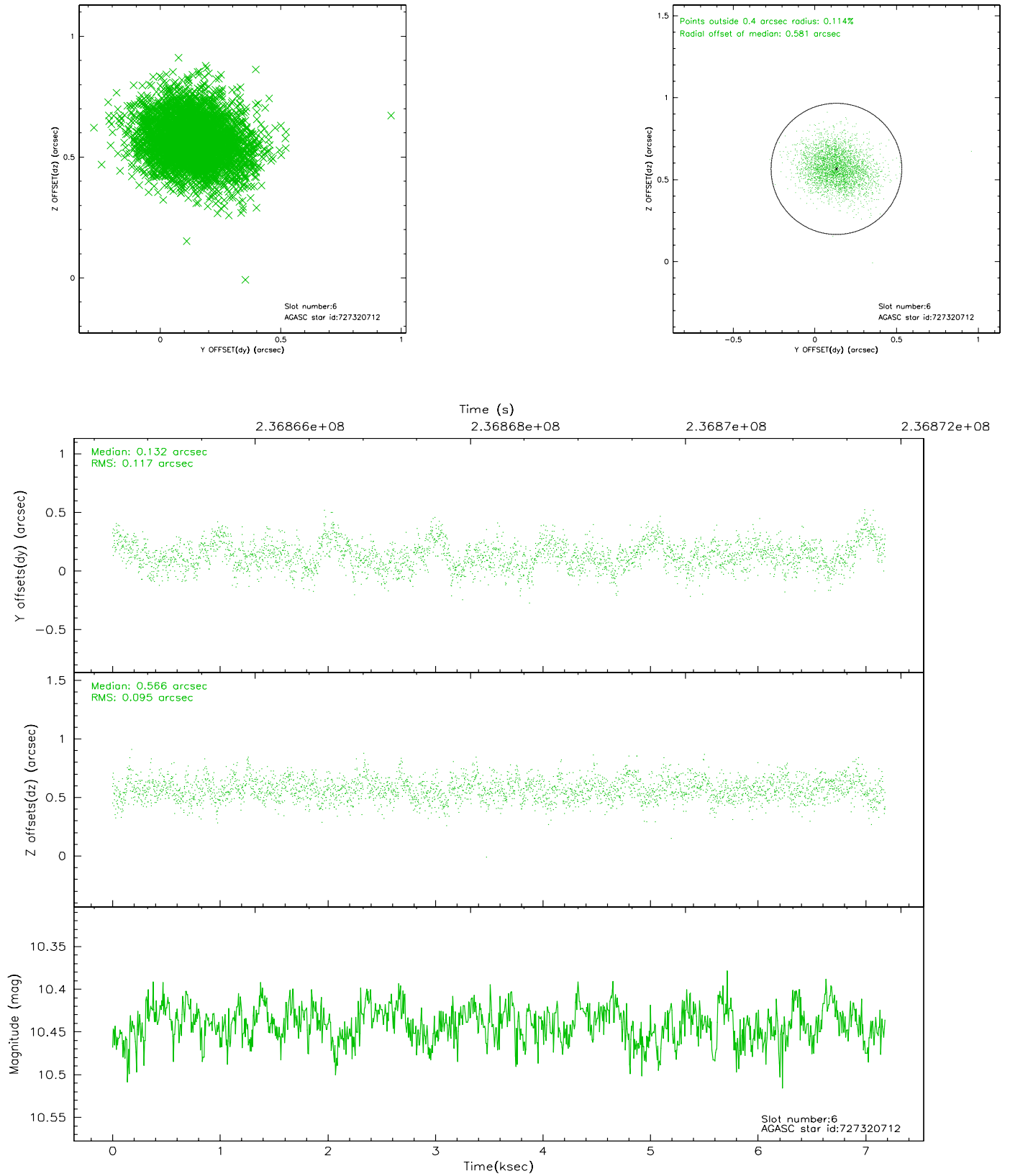
2.4.2 Slot 4



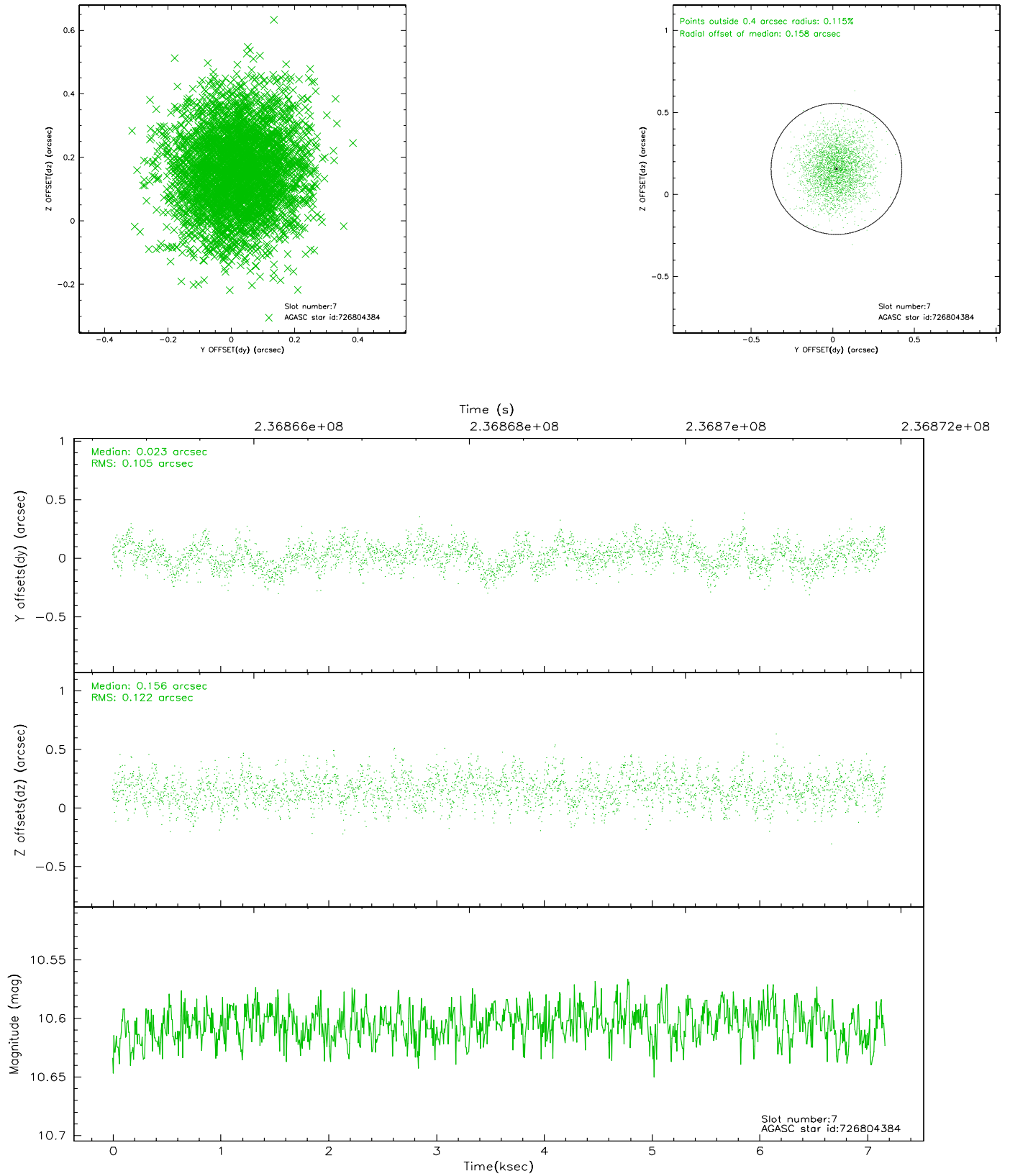
2.4.3 Slot 5



2.4.4 Slot 6

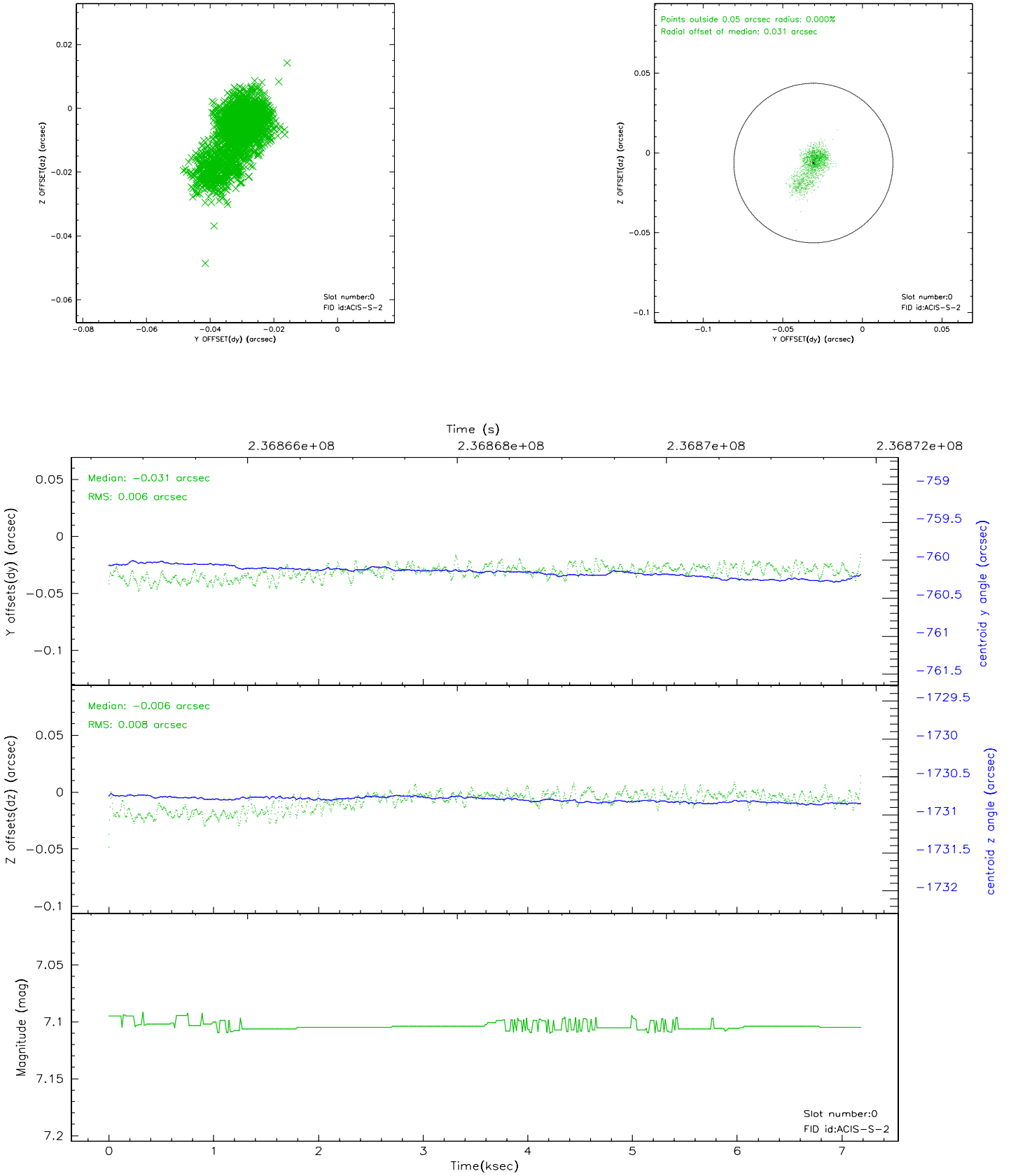


2.4.5 Slot 7

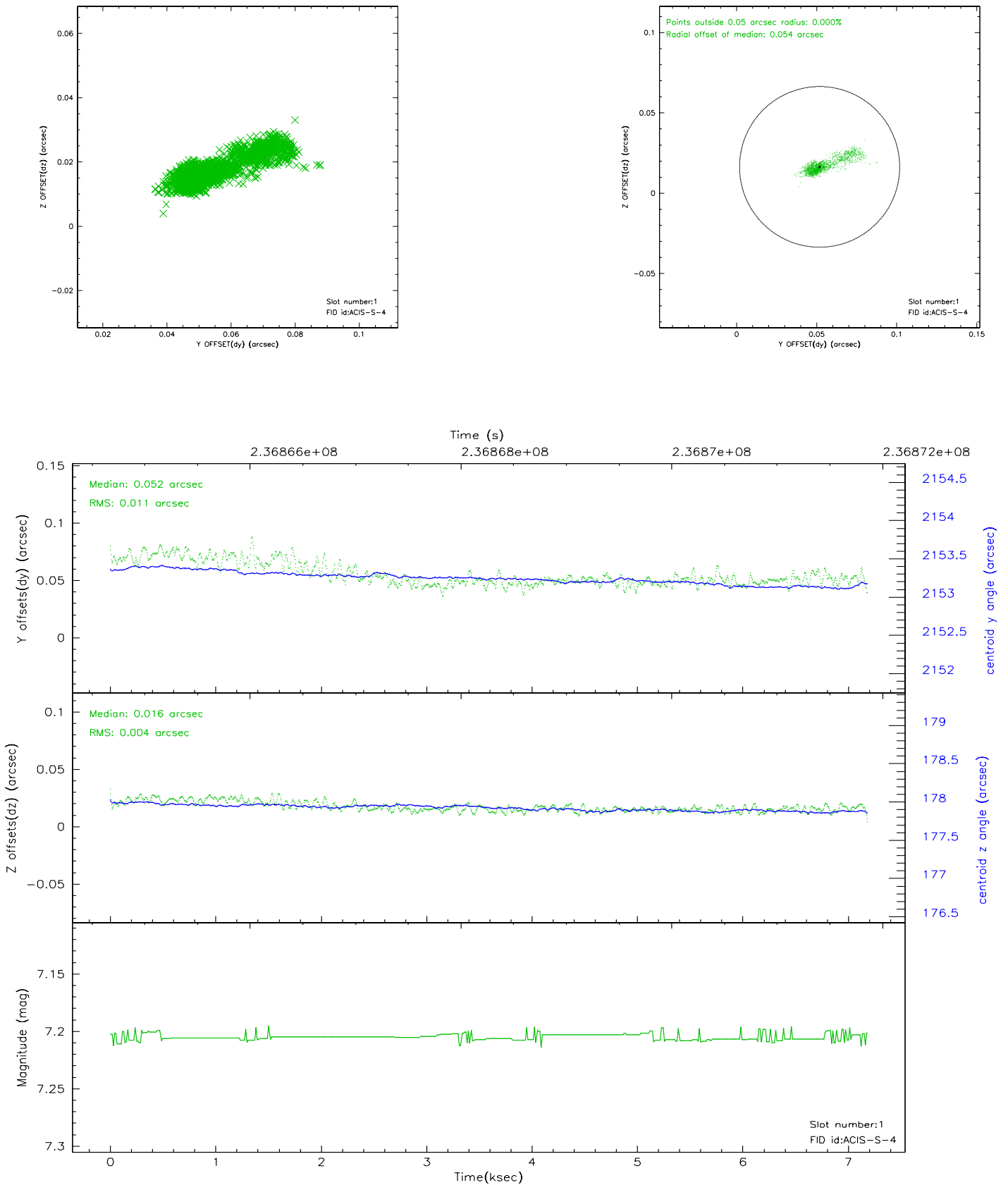


2.5 FID Slots

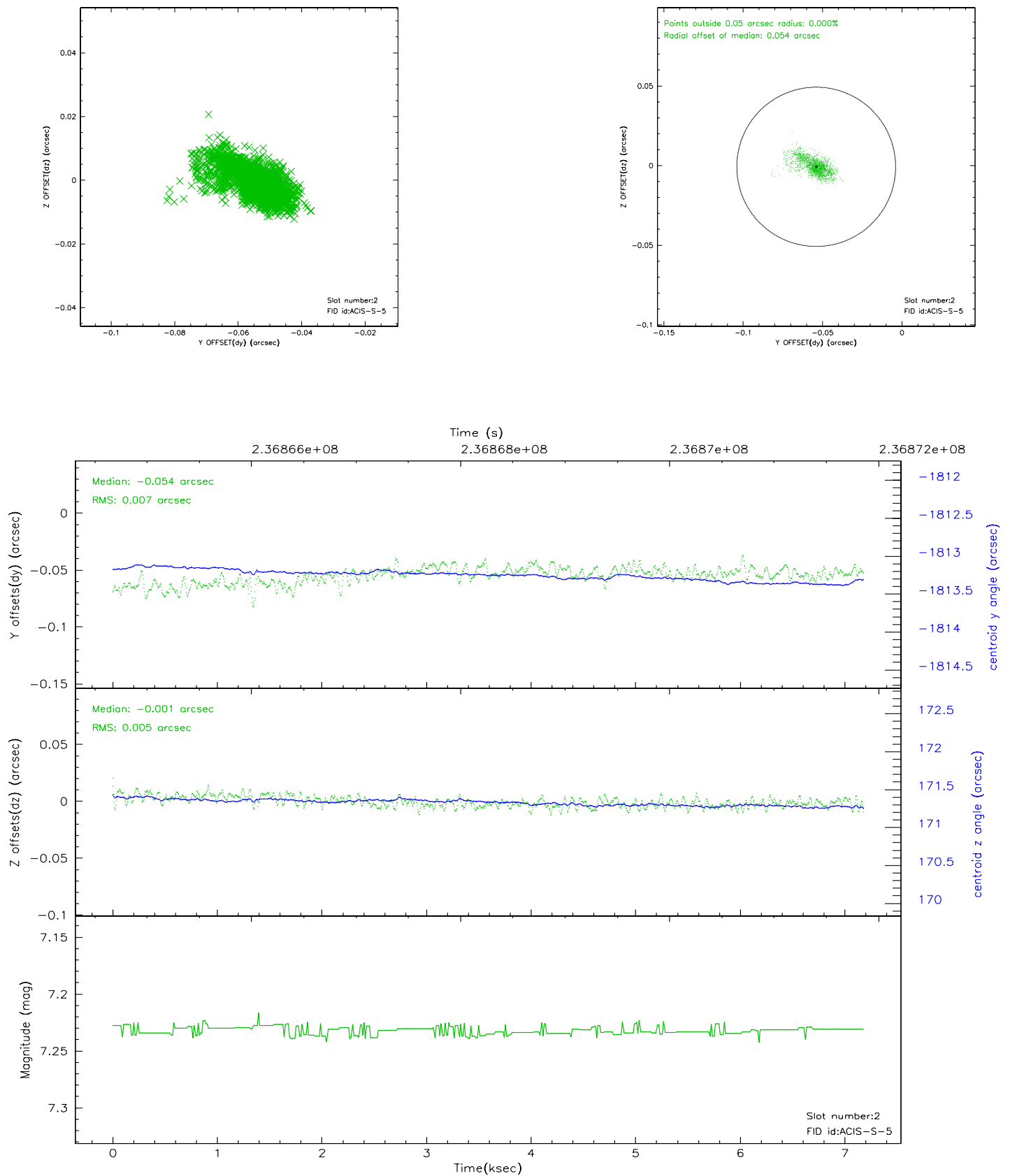
2.5.1 Slot 0



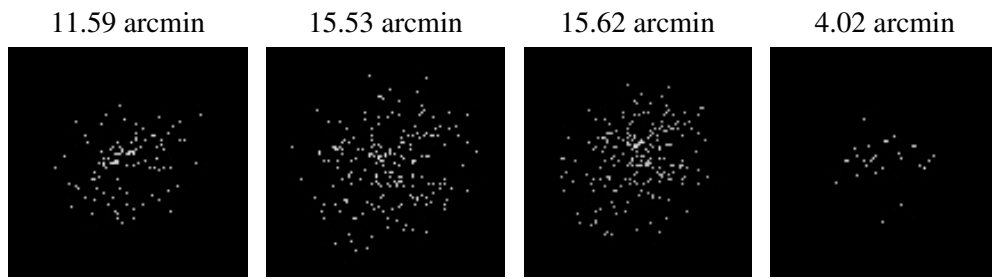
2.5.2 Slot 1



2.5.3 Slot 2



3 Point Sources



A Summary

A.1 Status

V&V Scientist	Jen Lauer
V&V Date (YYYY-MM-DD)	2006.03.13
V&V Edition	1
V&V Disposition and Status	OK
V&V Charge Time	7.180799

A.2 Comments

Target coordinates for all Comet Tempel 1 observations were specified the same, and are not necessarily correct. The actual pointing for the observation is correct. Guide star in slot 3 was excluded from the aspect solution. Star tracked only 92.6% of time.