

V&V Reference Report

L2 ASCDS Version : 8.5.1.1

Observation 6320 - L2 Version 3
Chandra X-Ray Center

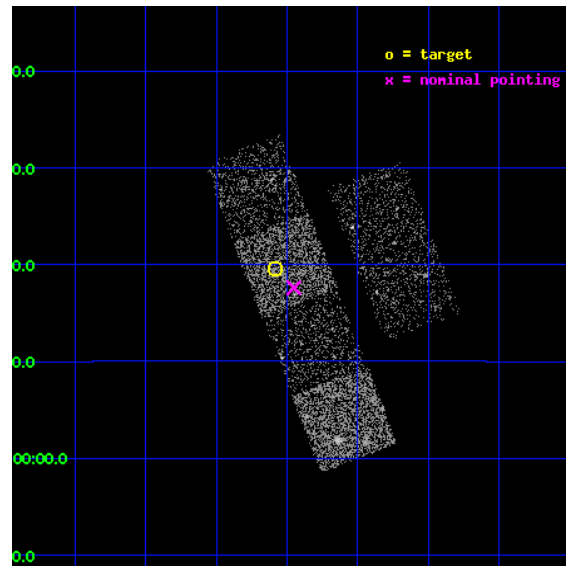
L2 Processing Date : Dec 25 2012

Contents

1	Front	2
2	OBI	3
2.1	OBI	3
2.1.1	Images	3
2.1.2	Bias	3
2.1.3	Parameters	4
2.1.4	Events	4
2.2	Compared Parameters	5
2.3	Aspect	6
2.4	Star Slots	9
2.4.1	Slot 3	9
2.4.2	Slot 4	10
2.4.3	Slot 5	11
2.4.4	Slot 6	12
2.4.5	Slot 7	13
2.5	FID Slots	14
2.5.1	Slot 0	14
2.5.2	Slot 1	15
2.5.3	Slot 2	16
A	Summary	17
A.1	Status	17
A.2	Comments	17

1 Front

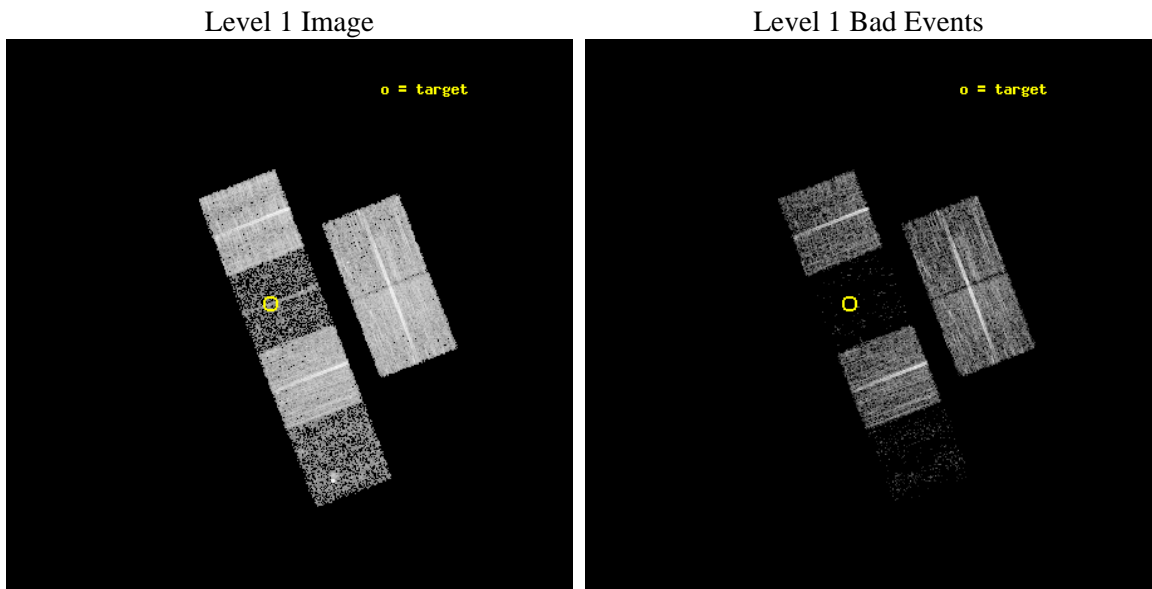
seq_num	100060	Sequence number
obs_id	6320	Observation id
title	Comet 9P/Tempel 1 During the Deep Impact Encounter	Proposal title
observer	Dr. Carey Lisse	Principal investigator
object	9P/Tempel 1	Source name
dtcycle	0	
cycle	P	events from which exps? Prim/Second/Both
ra_targ	204.520953	Observer's specified target RA [deg]
dec_targ	-9.673485	Observer's specified target Dec [deg]
ra_nom	204.48791521637	Nominal RA [deg]
dec_nom	-9.706746661389	Nominal Dec [deg]
roll_nom	248.85645389936	Nominal Roll [deg]
revision	3	Processing version of data
ontime	7177.5999732614	Sum of GTIs [s]
livetime	7086.7128805681	Livetime [s]
ontime2	7177.5999732614	Sum of GTIs [s]
ontime3	7177.5999732614	Sum of GTIs [s]
ontime5	7177.5999732614	Sum of GTIs [s]
ontime6	7177.5999732614	Sum of GTIs [s]
ontime7	7177.5999732614	Sum of GTIs [s]
ontime8	7177.5999732614	Sum of GTIs [s]
l2events	10468	Number of level 2 events



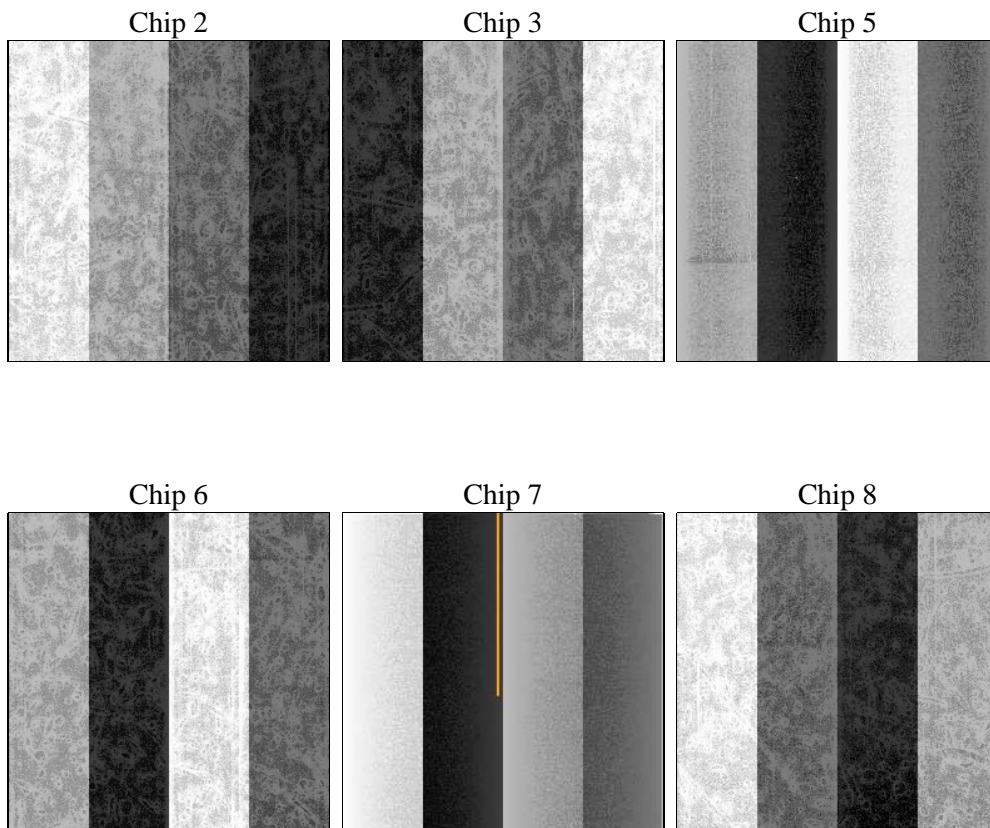
2 OBI

2.1 OBI

2.1.1 Images



2.1.2 Bias



2.1.3 Parameters

obi_num	0	Obi number	sched_exp_time	7000.000000	[s] Scheduled observation exposure time
ascdsver	8.5.1.1	Processing system revision	ontime	7177.5999732614	Sum of GTIs [s]
caldsver	4.5.5	 	ontime2	7177.5999732614	Sum of GTIs [s]
date	2012-12-25T21:18:10	Date and time of file creation	ontime3	7177.5999732614	Sum of GTIs [s]
revision	3	Processing version of data	ontime5	7177.5999732614	Sum of GTIs [s]
			ontime6	7177.5999732614	Sum of GTIs [s]
			ontime7	7177.5999732614	Sum of GTIs [s]
			ontime8	7177.5999732614	Sum of GTIs [s]
			l1events	152089	Number of level 1 events

2.1.4 Events

	ccd 2	ccd 3	ccd 5	ccd 6	ccd 7	ccd 8
level 1 events	38795	32059	6604	32728	4426	37477
rejected events	37200	30895	2168	31199	1059	28088
rejected %	95%	96%	32%	95%	23%	74%

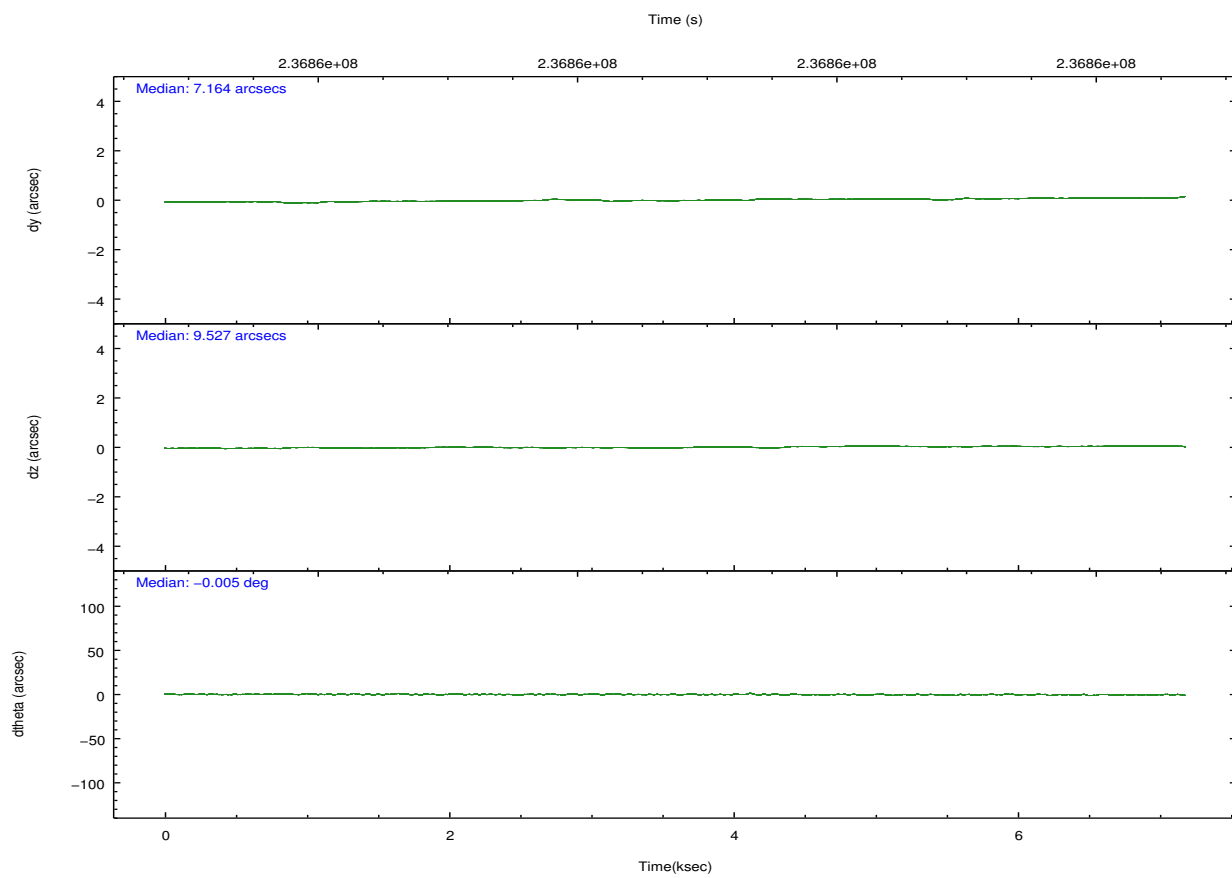
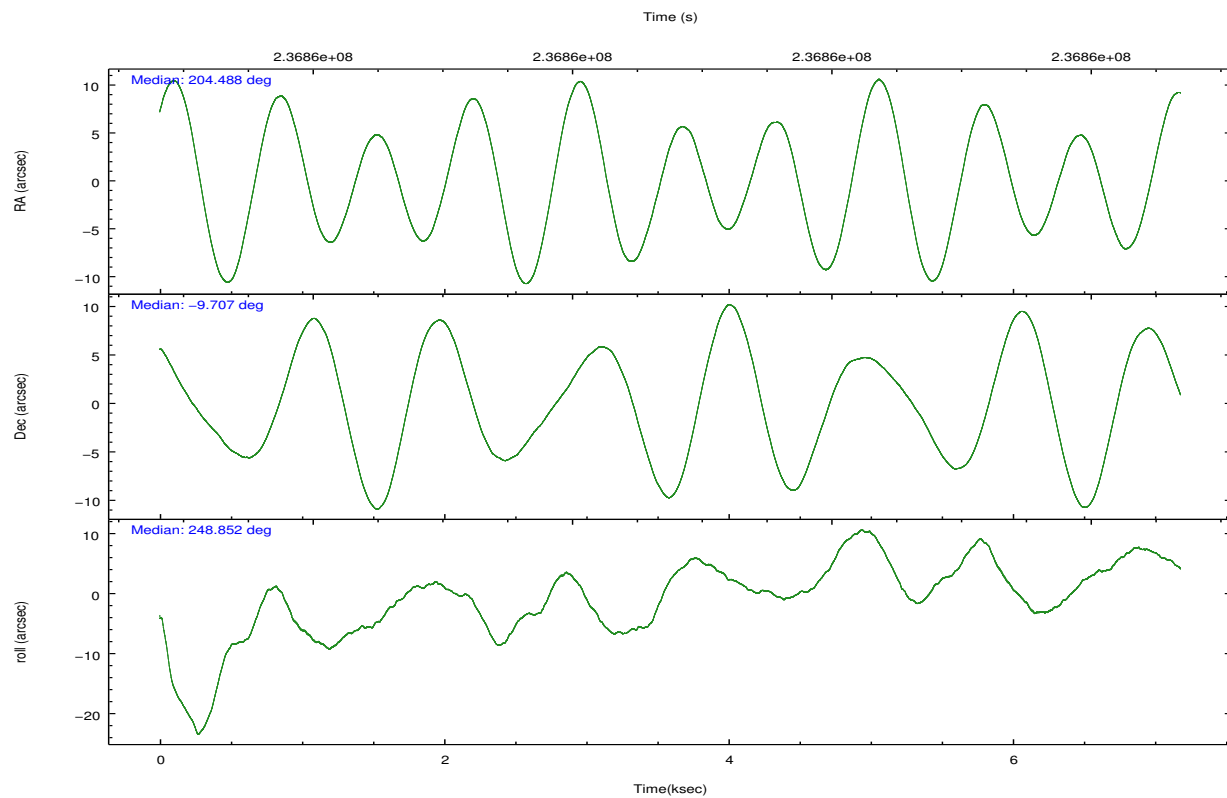
	ccd 2	ccd 3	ccd 5	ccd 6	ccd 7	ccd 8
grade 0 events	634	602	1529	811	905	2774
	1%	1%	23%	2%	20%	7%
grade 1 events	9	13	45	9	36	32
	0%	0%	0%	0%	0%	0%
grade 2 events	453	154	1696	269	1182	2206
	1%	0%	25%	0%	26%	5%
grade 3 events	199	196	517	217	537	1123
	0%	0%	7%	0%	12%	2%
grade 4 events	221	173	425	200	510	1029
	0%	0%	6%	0%	11%	2%
grade 5 events	54	25	345	31	118	203
	0%	0%	5%	0%	2%	0%
grade 6 events	153	86	487	108	384	2670
	0%	0%	7%	0%	8%	7%
grade 7 events	37072	30810	1560	31083	754	27440
	95%	96%	23%	94%	17%	73%

2.2 Compared Parameters

Parameter	Planned	Actual
Instrument	ACIS	ACIS
Detector	ACIS-235678	ACIS-235678
Grating	NONE	NONE
Data mode	VFAINT	VFAINT
Observation mode	POINTING	POINTING
[deg] Pointing RA	204.483239	204.4879152163684
[deg] Pointing Dec	-9.679914	-9.706746661389015
[deg] Pointing Roll	248.699029	248.8564538993577
[mm] SIM focus pos	-0.684267	-0.6828225247311905
[mm] SIM defocus	0	0.001444936568705701
[mm] SIM translation stage pos	-190.132523	-190.145094680475
[mm] SIM translation stage offset	0	0.01257209746719923
[s] Observation start time (MET)	236857343.184000	236856967.24789
Observation start date	2005-07-04T09:41:19	2005-07-04T09:36:07
[s] Observation end time (MET)	236864343.184000	236864477.42324
Observation end date	2005-07-04T11:37:59	2005-07-04T11:41:17
Read mode	TIMED	TIMED

Parameter	Planned	Actual
Obspar format version number	7	7
Obspar file type	PREDICTED	ACTUAL
Obspar update status	NONE	UPDATED
Number of optional ACIS chips dropped	0	0
On-chip summing requested	N	N
Subarray requested	NONE	NONE
Alternating exposures requested	N	N
[s] Primary exposure time	0.000000	3.2

2.3 Aspect

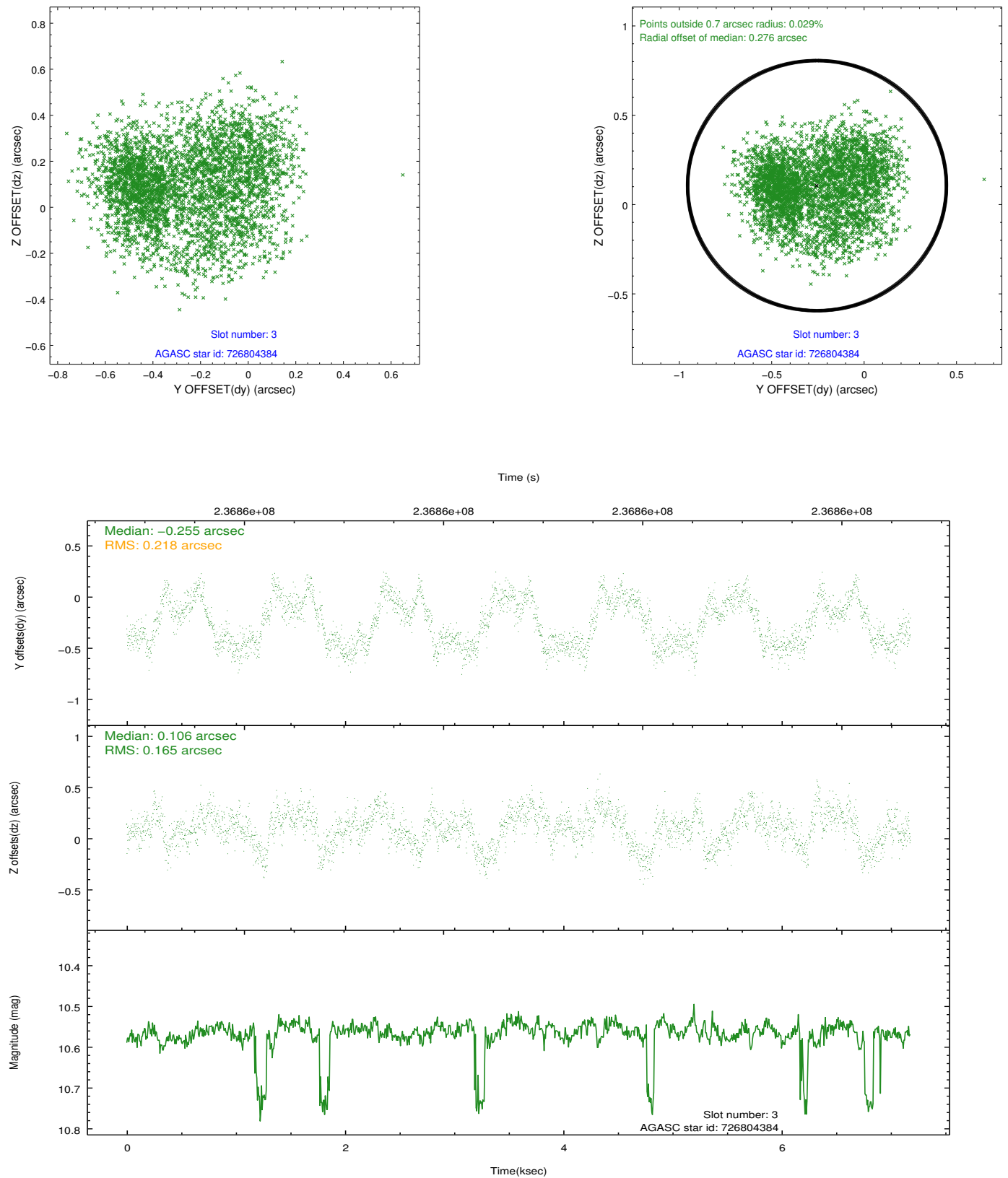


Slot Statistics

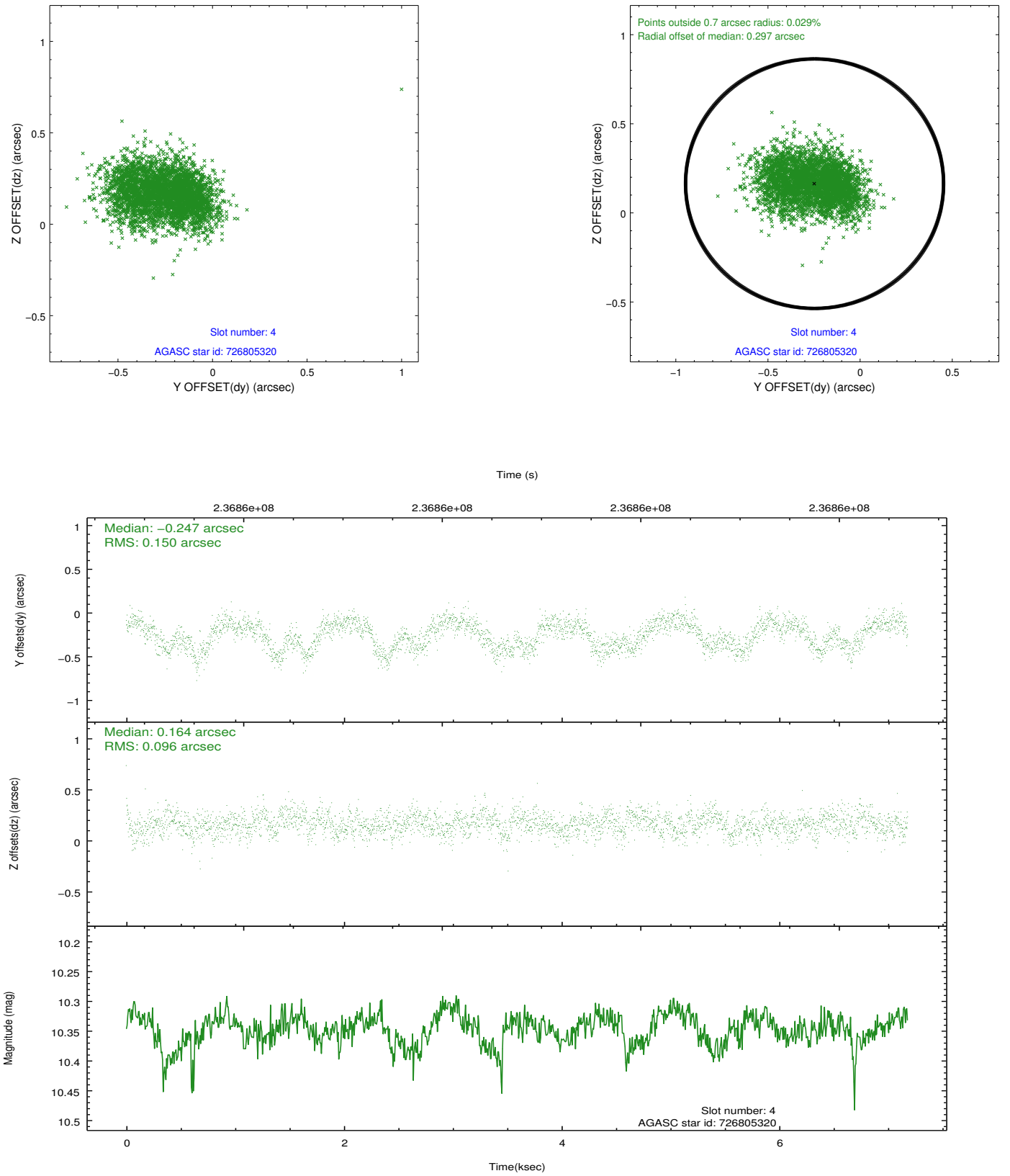
slot	status	id	mag	n_pts	med_dy	med_dz	dr1	dr2	ra	dec	mean_y	mean_z
0	FID	ACIS-S-2	7.10	1752	-0.049	-0.045	0.006	0.011	0.000000	0.000000	-759.95	-1730.72
1	FID	ACIS-S-4	7.21	1752	0.108	0.036	0.006	0.010	0.000000	0.000000	2153.10	177.06
2	FID	ACIS-S-5	7.23	1751	-0.090	0.018	0.007	0.011	0.000000	0.000000	-1811.83	171.57
3	GUIDE	726804384	10.56	3490	-0.255	0.106	0.303	0.436	204.057952	-9.038299	-1601.45	-2247.96
4	GUIDE	726805320	10.35	3498	-0.247	0.164	0.192	0.297	204.212849	-9.734967	533.47	-822.24
5	GUIDE	726932400	10.44	3502	0.038	-0.106	0.181	0.295	204.323420	-9.942274	1086.76	-185.04
6	GUIDE	726935840	9.52	3504	0.542	-0.498	0.133	0.229	205.084608	-9.297514	-2055.72	1490.52
7	GUIDE	727320712	10.45	3492	-0.053	0.353	0.194	0.313	204.468965	-10.254166	1944.45	704.82

2.4 Star Slots

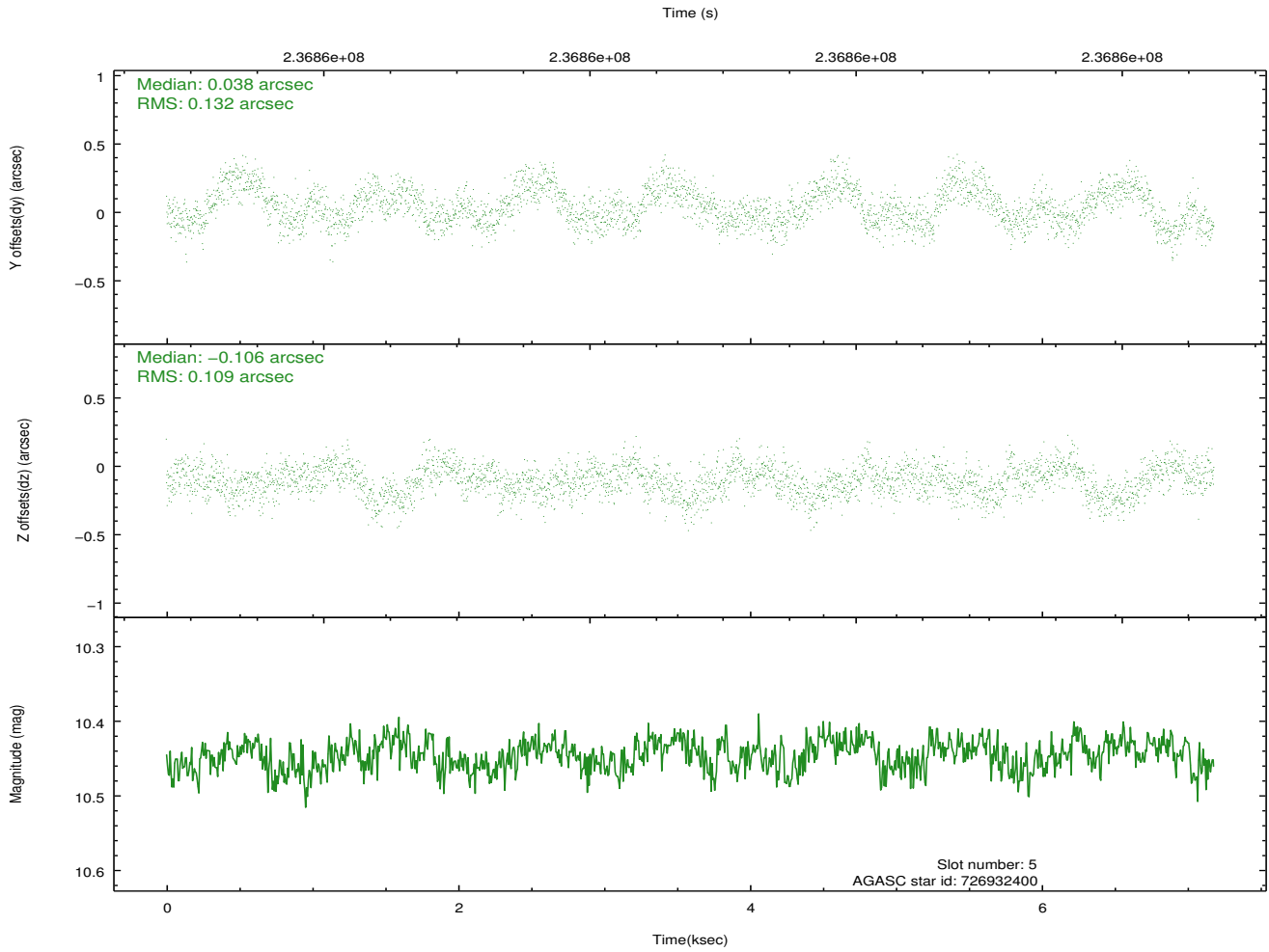
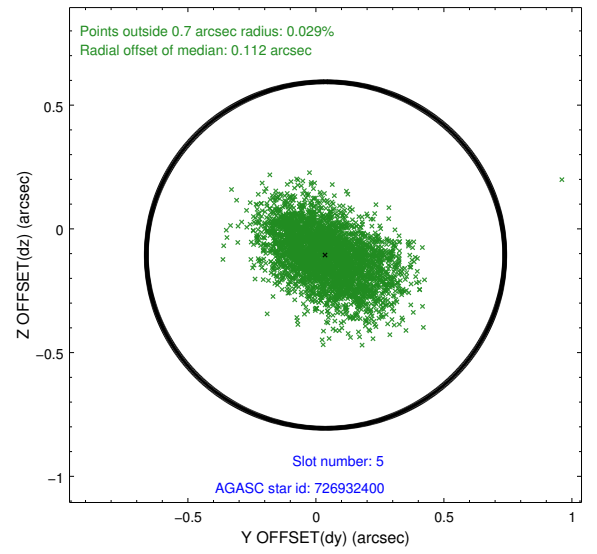
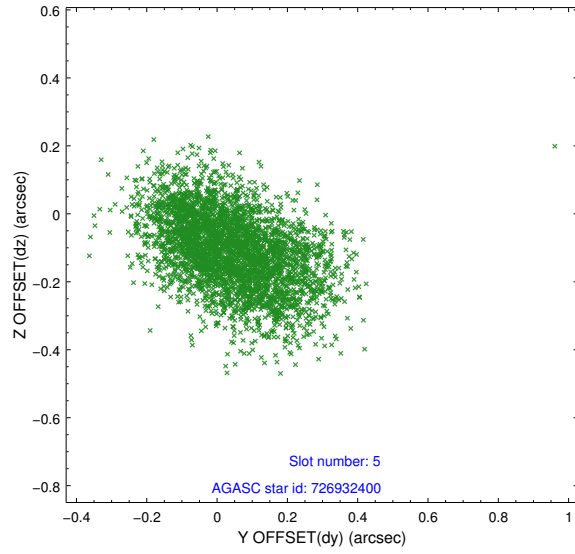
2.4.1 Slot 3



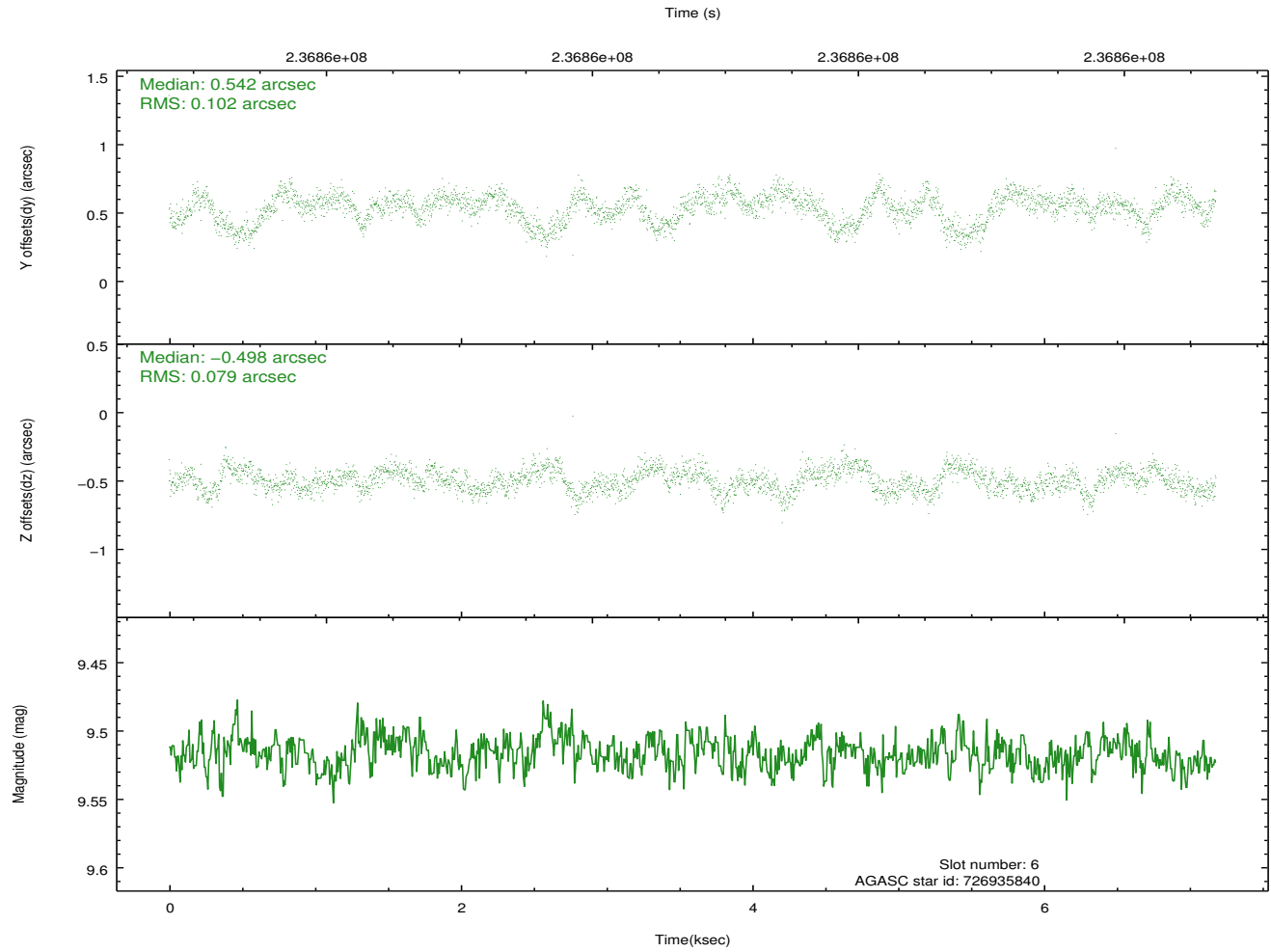
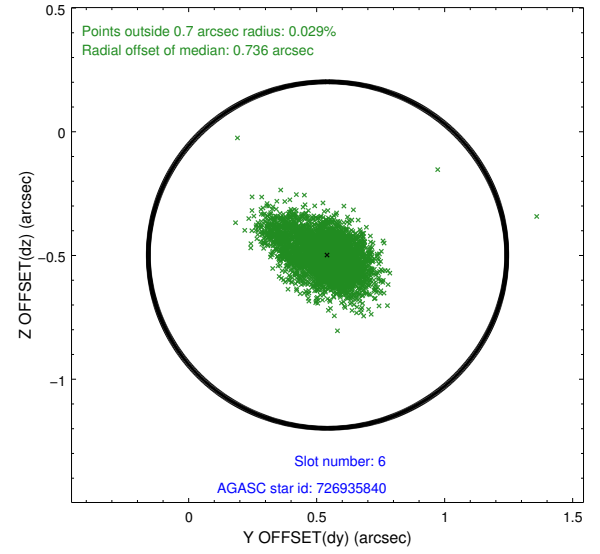
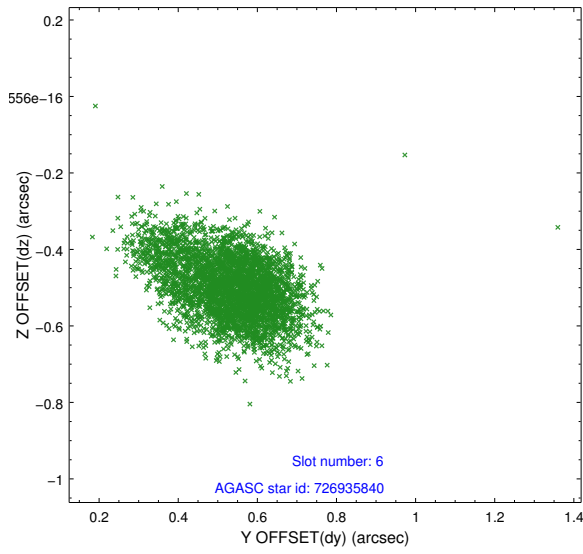
2.4.2 Slot 4



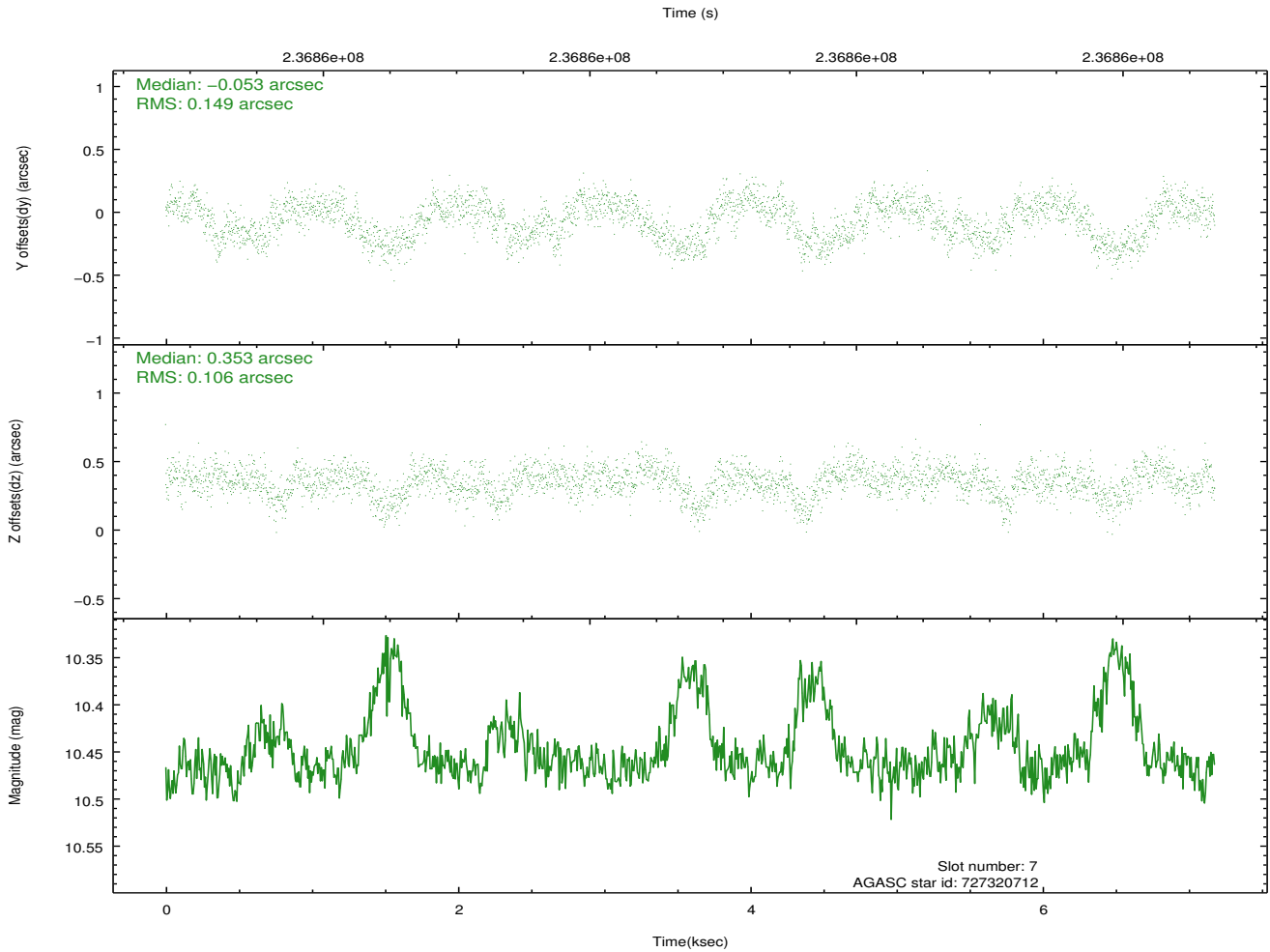
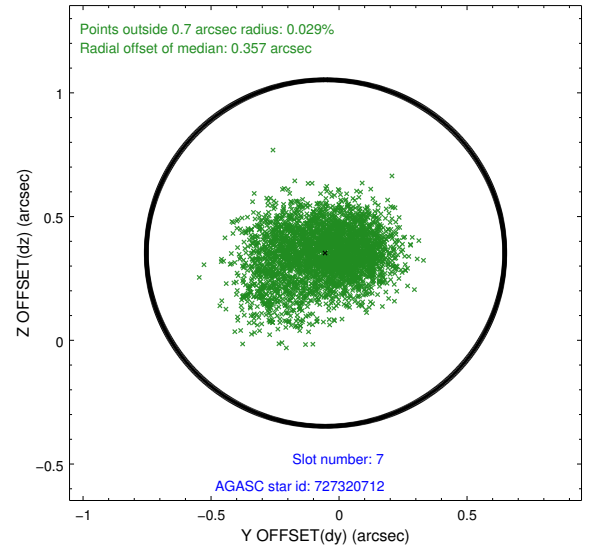
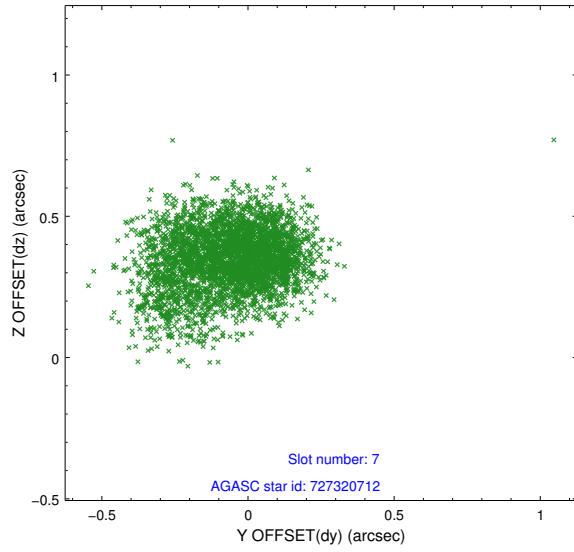
2.4.3 Slot 5



2.4.4 Slot 6

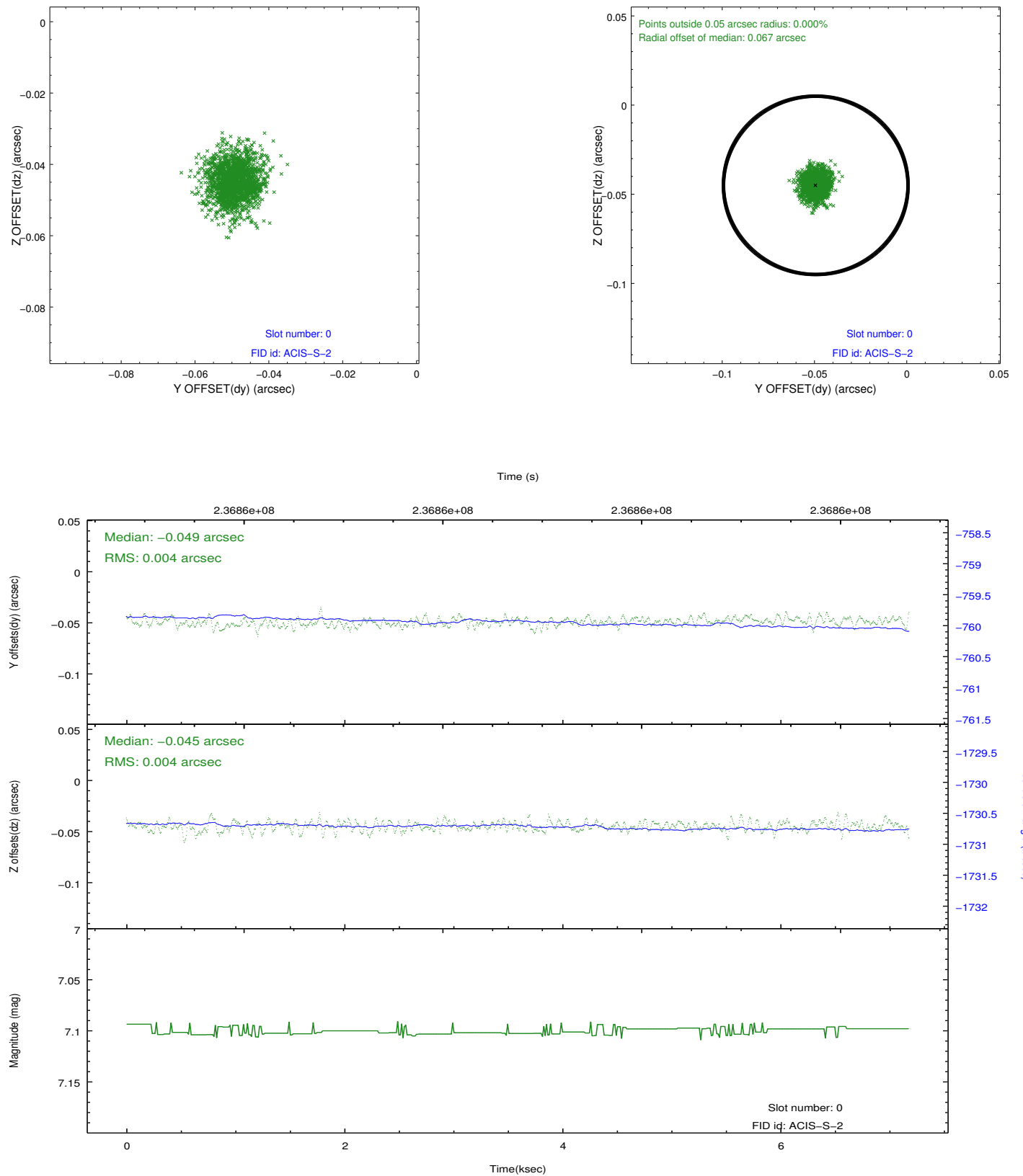


2.4.5 Slot 7

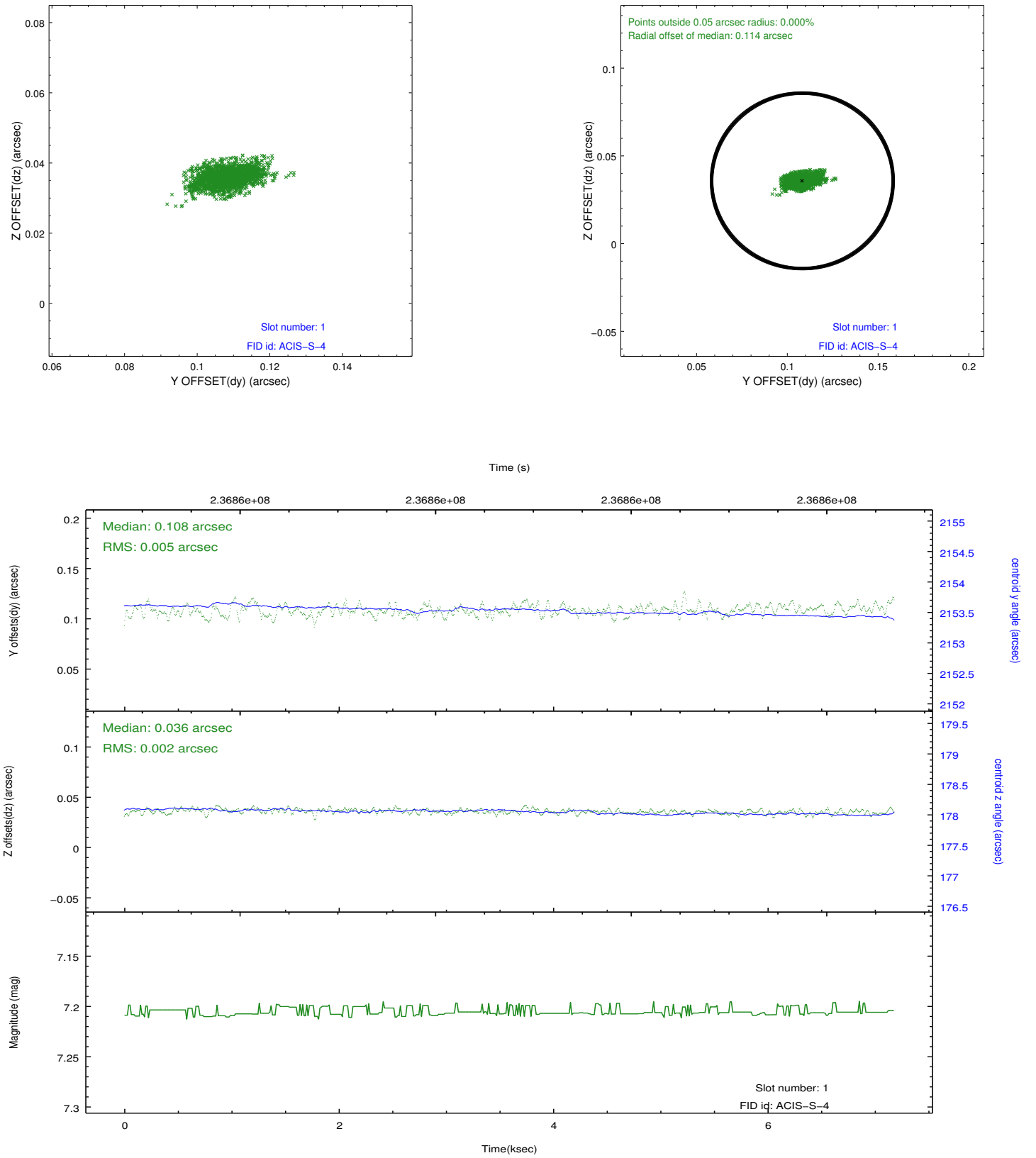


2.5 FID Slots

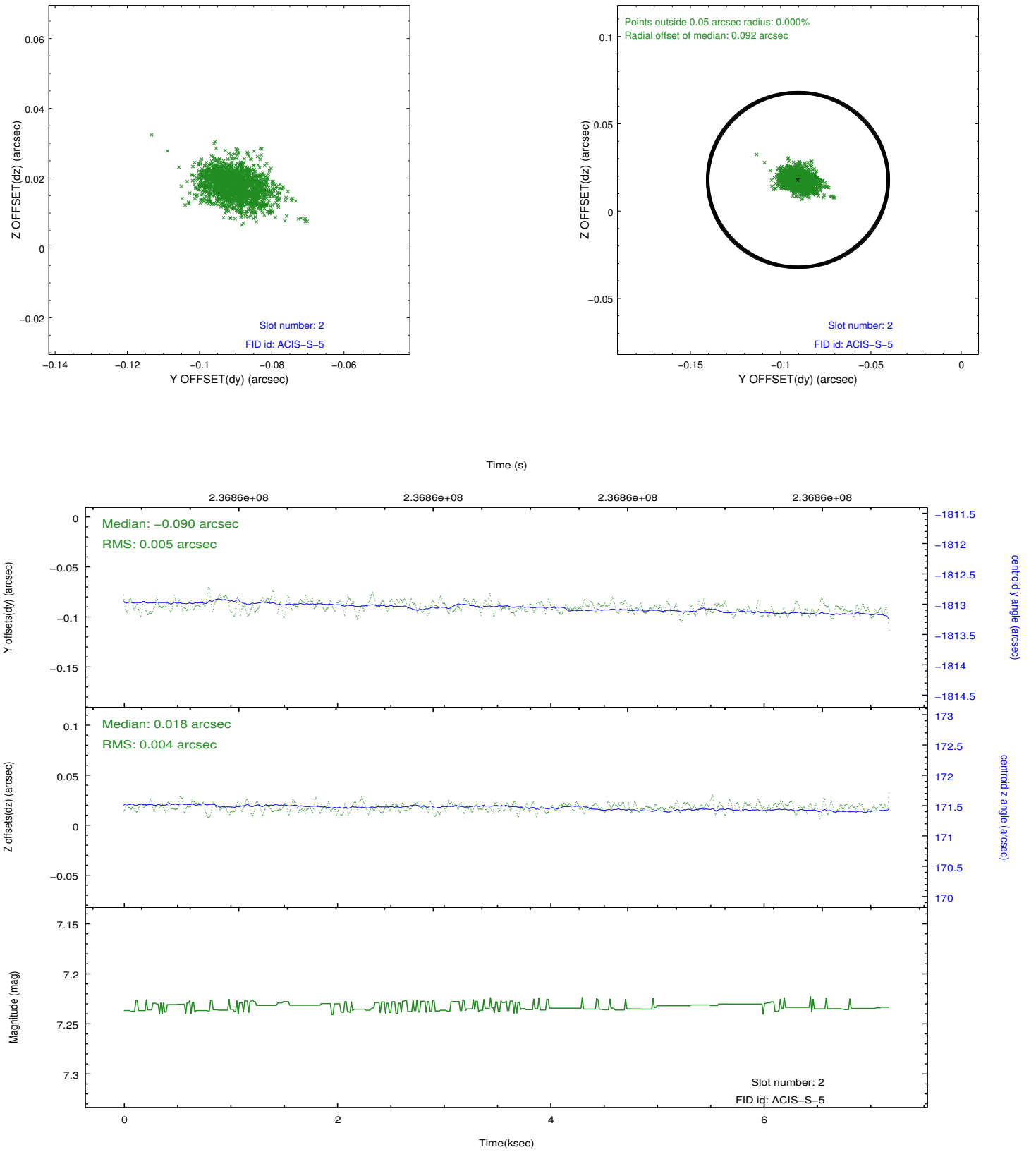
2.5.1 Slot 0



2.5.2 Slot 1



2.5.3 Slot 2



A Summary

A.1 Status

V&V Scientist	Jen Lauer
V&V Date (YYYY-MM-DD)	2013.01.17
V&V Edition	1
V&V Disposition and Status	OK
V&V Charge Time	7.177599

A.2 Comments

This is a moving target. Users will need to run `sso_freeze` or similar software to position the events in the reference frame of the target.