

V&V Reference Report

L2 ASCDS Version : 8.5.1.1

Observation 6319 - L2 Version 3
Chandra X-Ray Center

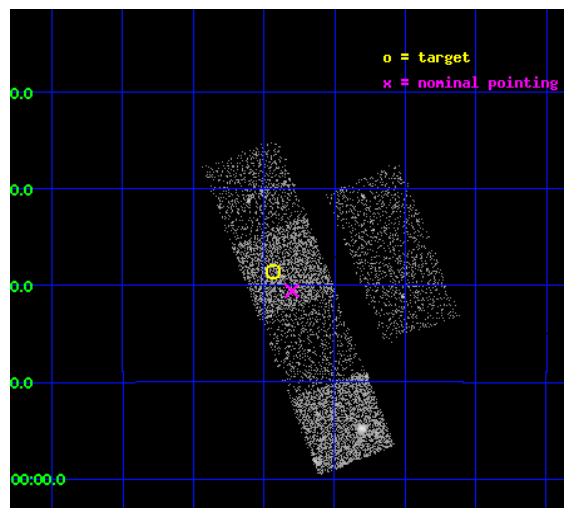
L2 Processing Date : Dec 25 2012

Contents

1	Front	2
2	OBI	3
2.1	OBI	3
2.1.1	Images	3
2.1.2	Bias	3
2.1.3	Parameters	4
2.1.4	Events	4
2.2	Compared Parameters	5
2.3	Aspect	6
2.4	Star Slots	9
2.4.1	Slot 3	9
2.4.2	Slot 4	10
2.4.3	Slot 5	11
2.4.4	Slot 6	12
2.4.5	Slot 7	13
2.5	FID Slots	14
2.5.1	Slot 0	14
2.5.2	Slot 1	15
2.5.3	Slot 2	16
A	Summary	17
A.1	Status	17
A.2	Comments	17

1 Front

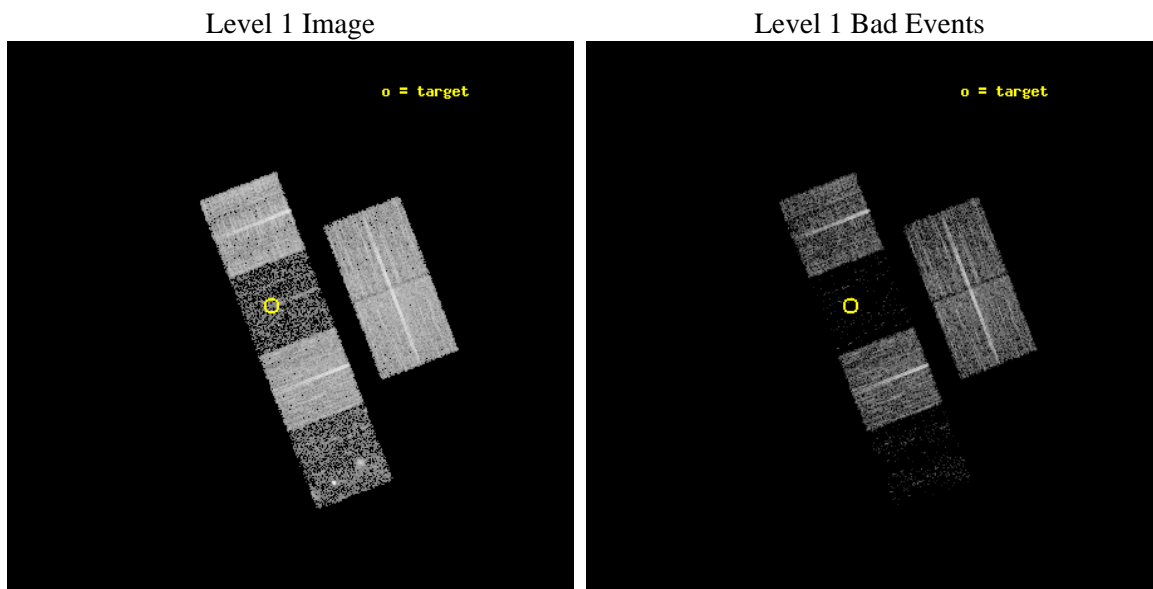
seq_num	100060	Sequence number
obs_id	6319	Observation id
title	Comet 9P/Tempel 1 During the Deep Impact Encounter	Proposal title
observer	Dr. Carey Lisse	Principal investigator
object	9P/Tempel 1	Source name
dtcycle	0	
cycle	P	events from which exps? Prim/Second/Both
ra_targ	204.483608	Observer's specified target RA [deg]
dec_targ	-9.642716	Observer's specified target Dec [deg]
ra_nom	204.45049623816	Nominal RA [deg]
dec_nom	-9.6760523840934	Nominal Dec [deg]
roll_nom	248.8479203102	Nominal Roll [deg]
revision	3	Processing version of data
ontime	7177.5999732614	Sum of GTIs [s]
livetime	7086.7128805681	Livetime [s]
ontime2	7177.5999732614	Sum of GTIs [s]
ontime3	7177.5999732614	Sum of GTIs [s]
ontime5	7177.5999732614	Sum of GTIs [s]
ontime6	7177.5999732614	Sum of GTIs [s]
ontime7	7177.5999732614	Sum of GTIs [s]
ontime8	7177.5999732614	Sum of GTIs [s]
l2events	10653	Number of level 2 events



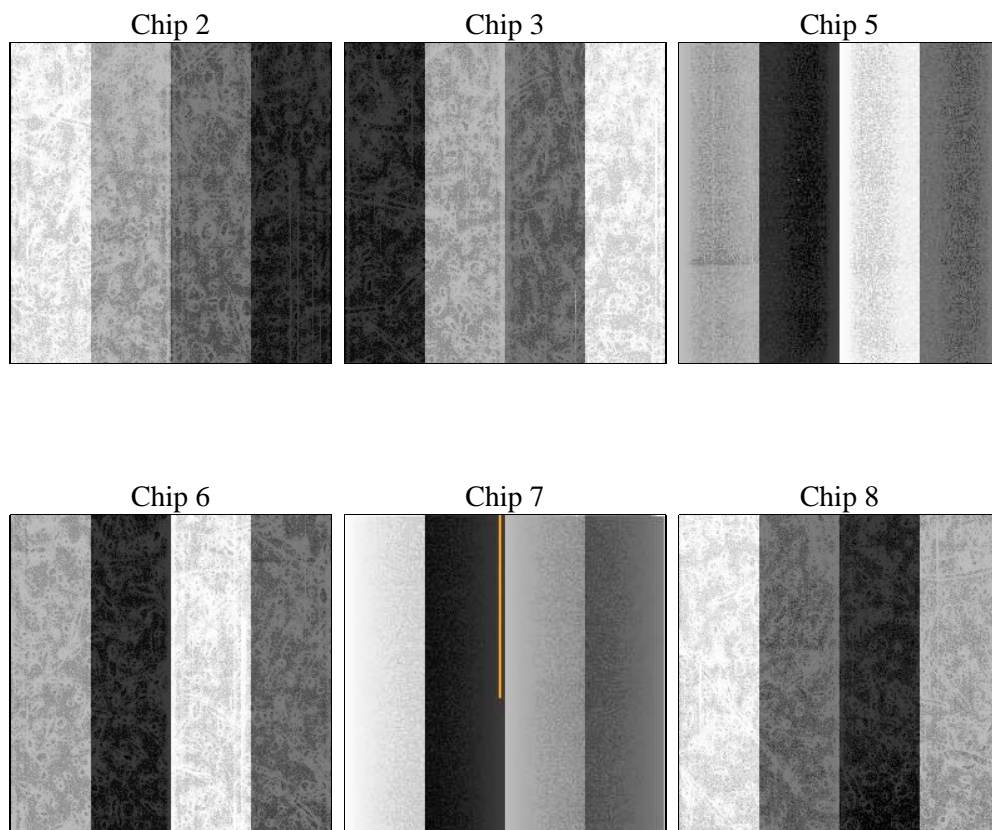
2 OBI

2.1 OBI

2.1.1 Images



2.1.2 Bias



2.1.3 Parameters

obi_num	0	Obi number	sched_exp_time	7000.000000	[s] Scheduled observation exposure time
ascdsver	8.5.1.1	Processing system revision	ontime	7177.5999732614	Sum of GTIs [s]
caldsver	4.5.5	 	ontime2	7177.5999732614	Sum of GTIs [s]
date	2012-12-25T21:21:31	Date and time of file creation	ontime3	7177.5999732614	Sum of GTIs [s]
revision	3	Processing version of data	ontime5	7177.5999732614	Sum of GTIs [s]
			ontime6	7177.5999732614	Sum of GTIs [s]
			ontime7	7177.5999732614	Sum of GTIs [s]
			ontime8	7177.5999732614	Sum of GTIs [s]
			l1events	147049	Number of level 1 events

2.1.4 Events

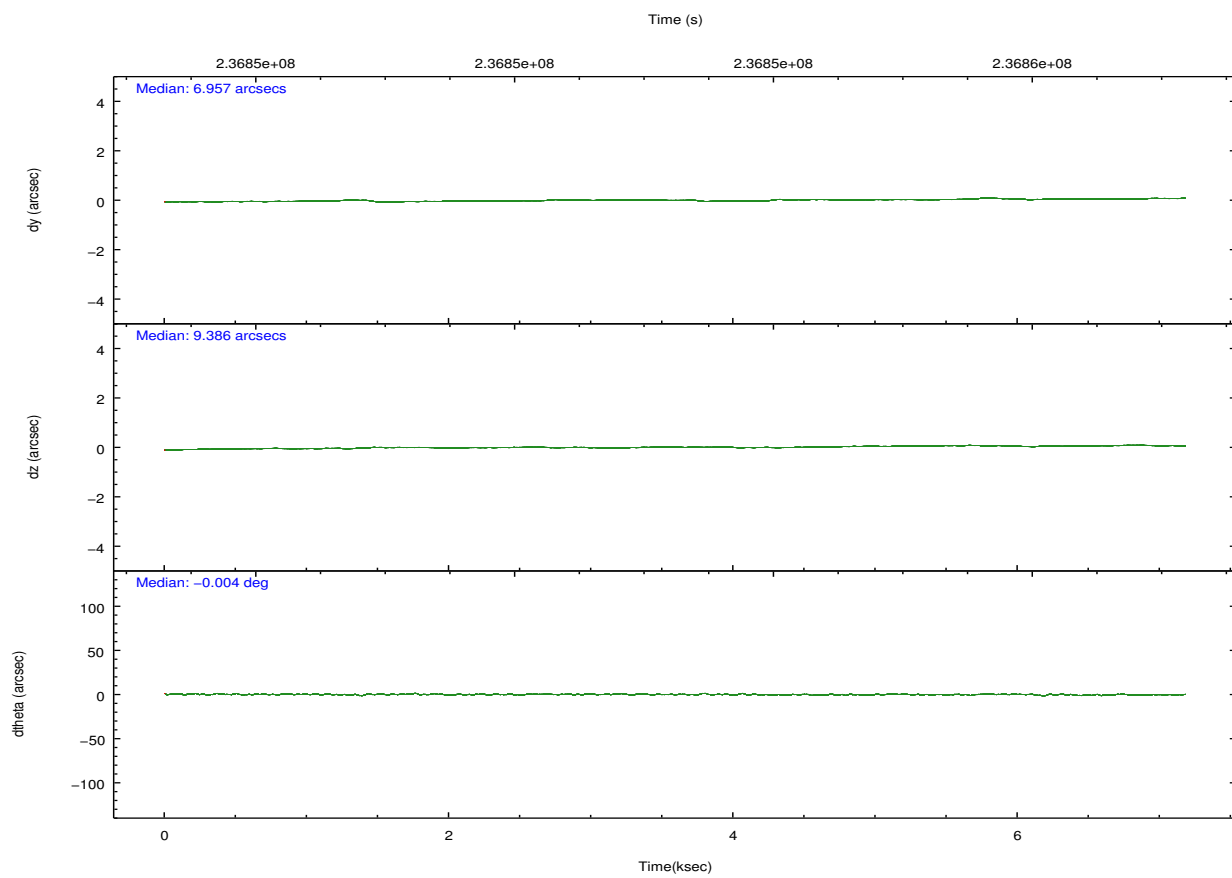
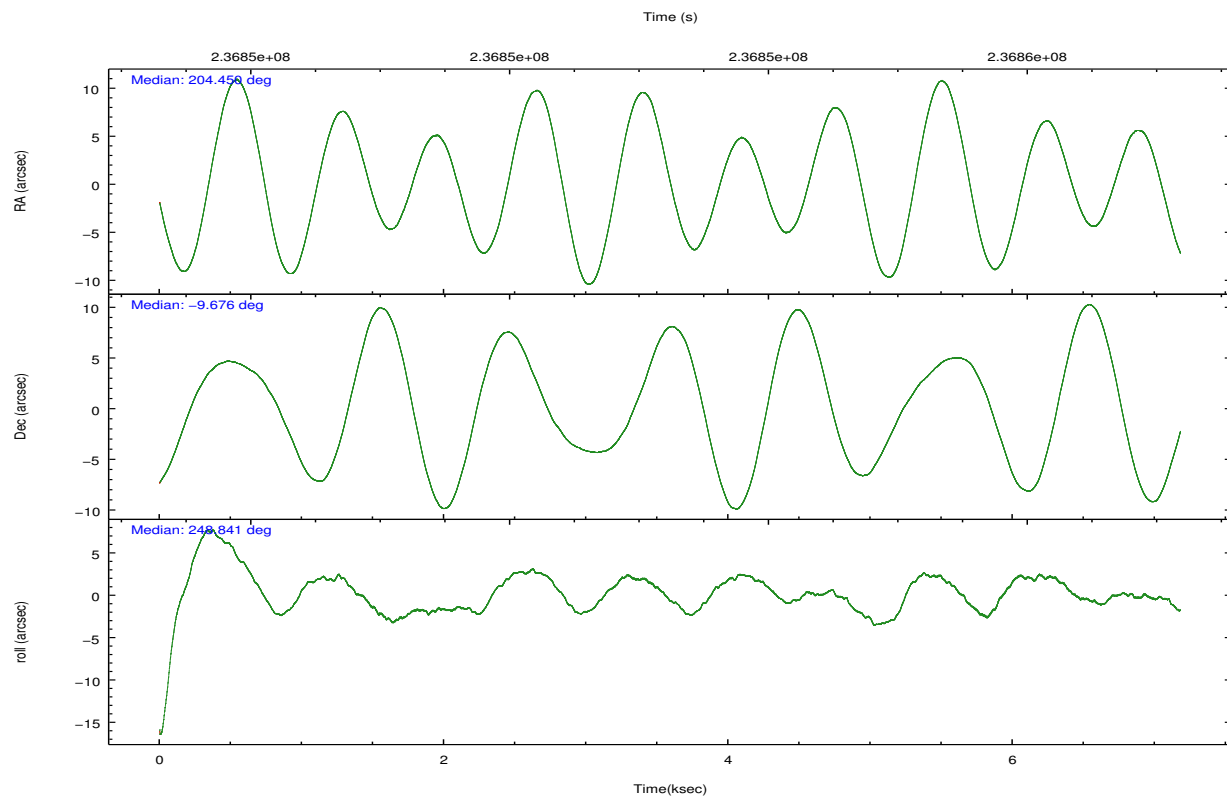
	ccd 2	ccd 3	ccd 5	ccd 6	ccd 7	ccd 8
level 1 events	36381	30958	7308	32412	4594	35396
rejected events	34840	29908	2224	31002	1228	26813
rejected %	95%	96%	30%	95%	26%	75%

	ccd 2	ccd 3	ccd 5	ccd 6	ccd 7	ccd 8
grade 0 events	639	468	1863	684	960	2397
	1%	1%	25%	2%	20%	6%
grade 1 events	10	8	40	22	21	25
	0%	0%	0%	0%	0%	0%
grade 2 events	391	152	1838	292	1130	2083
	1%	0%	25%	0%	24%	5%
grade 3 events	205	174	539	196	506	1018
	0%	0%	7%	0%	11%	2%
grade 4 events	233	207	528	193	566	969
	0%	0%	7%	0%	12%	2%
grade 5 events	60	38	333	28	146	191
	0%	0%	4%	0%	3%	0%
grade 6 events	145	104	542	111	407	2440
	0%	0%	7%	0%	8%	6%
grade 7 events	34698	29807	1625	30886	858	26273
	95%	96%	22%	95%	18%	74%

2.2 Compared Parameters

Parameter	Planned	Actual	Parameter	Planned	Actual
Instrument	ACIS	ACIS	Obspar format version number	7	7
Detector	ACIS-235678	ACIS-235678	Obspar file type	PREDICTED	ACTUAL
Grating	NONE	NONE	Obspar update status	NONE	UPDATED
Data mode	VFAINT	VFAINT	Number of optional ACIS chips dropped	0	0
Observation mode	POINTING	POINTING	On-chip summing requested	N	N
[deg] Pointing RA	204.445898	204.4504962381641	Subarray requested	NONE	NONE
[deg] Pointing Dec	-9.649148	-9.676052384093447	Alternating exposures requested	N	N
[deg] Pointing Roll	248.690517	248.8479203102011	[s] Primary exposure time	0.000000	3.2
[mm] SIM focus pos	-0.684267	-0.6828225247311905			
[mm] SIM defocus	0	0.001444936568705701			
[mm] SIM translation stage pos	-190.132523	-190.145094680475			
[mm] SIM translation stage offset	0	0.01257209746719923			
[s] Observation start time (MET)	236849833.184000	236849457.07255			
Observation start date	2005-07-04T07:36:09	2005-07-04T07:30:57			
[s] Observation end time (MET)	236856833.184000	236856967.24789			
Observation end date	2005-07-04T09:32:49	2005-07-04T09:36:07			
Read mode	TIMED	TIMED			

2.3 Aspect

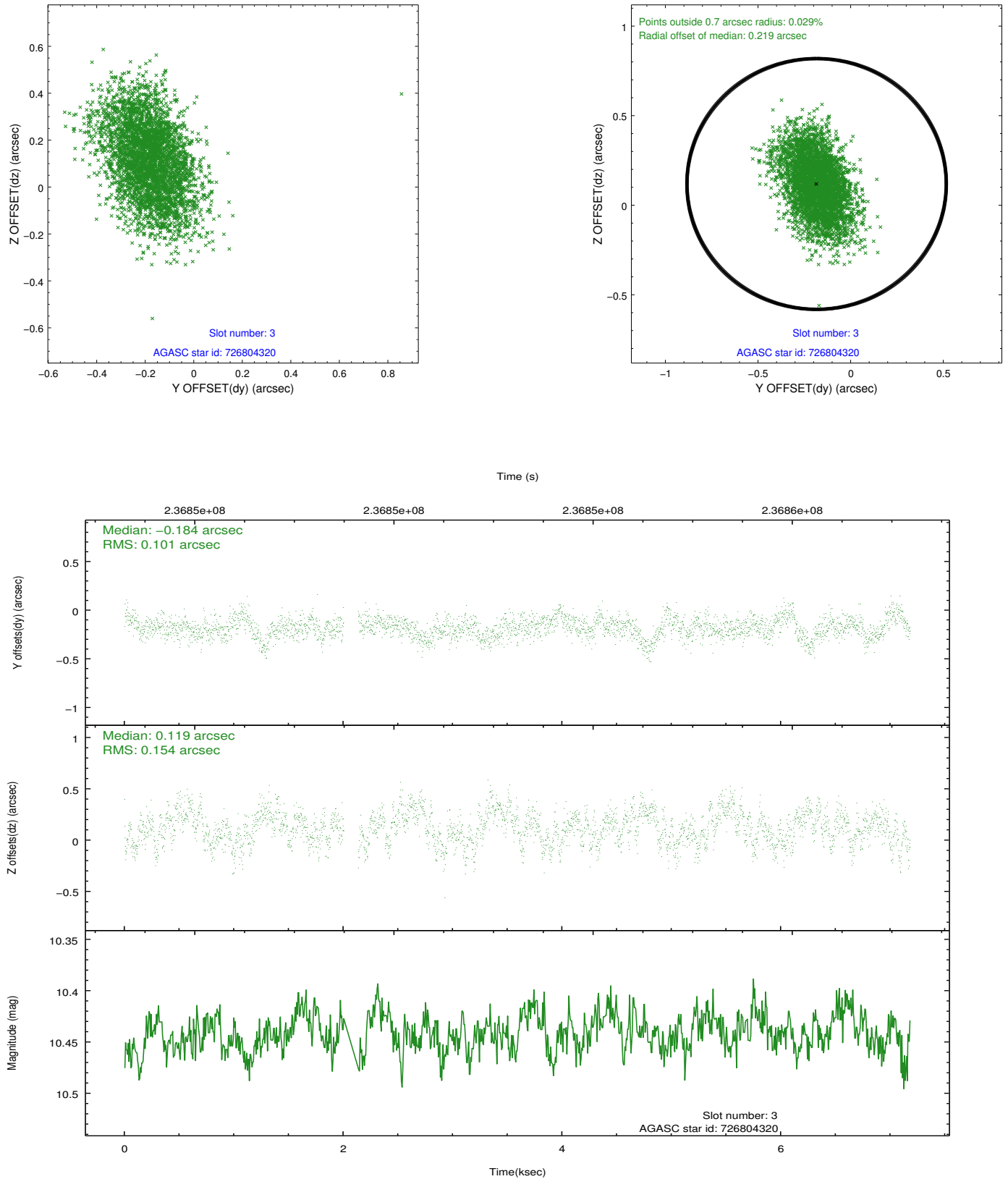


Slot Statistics

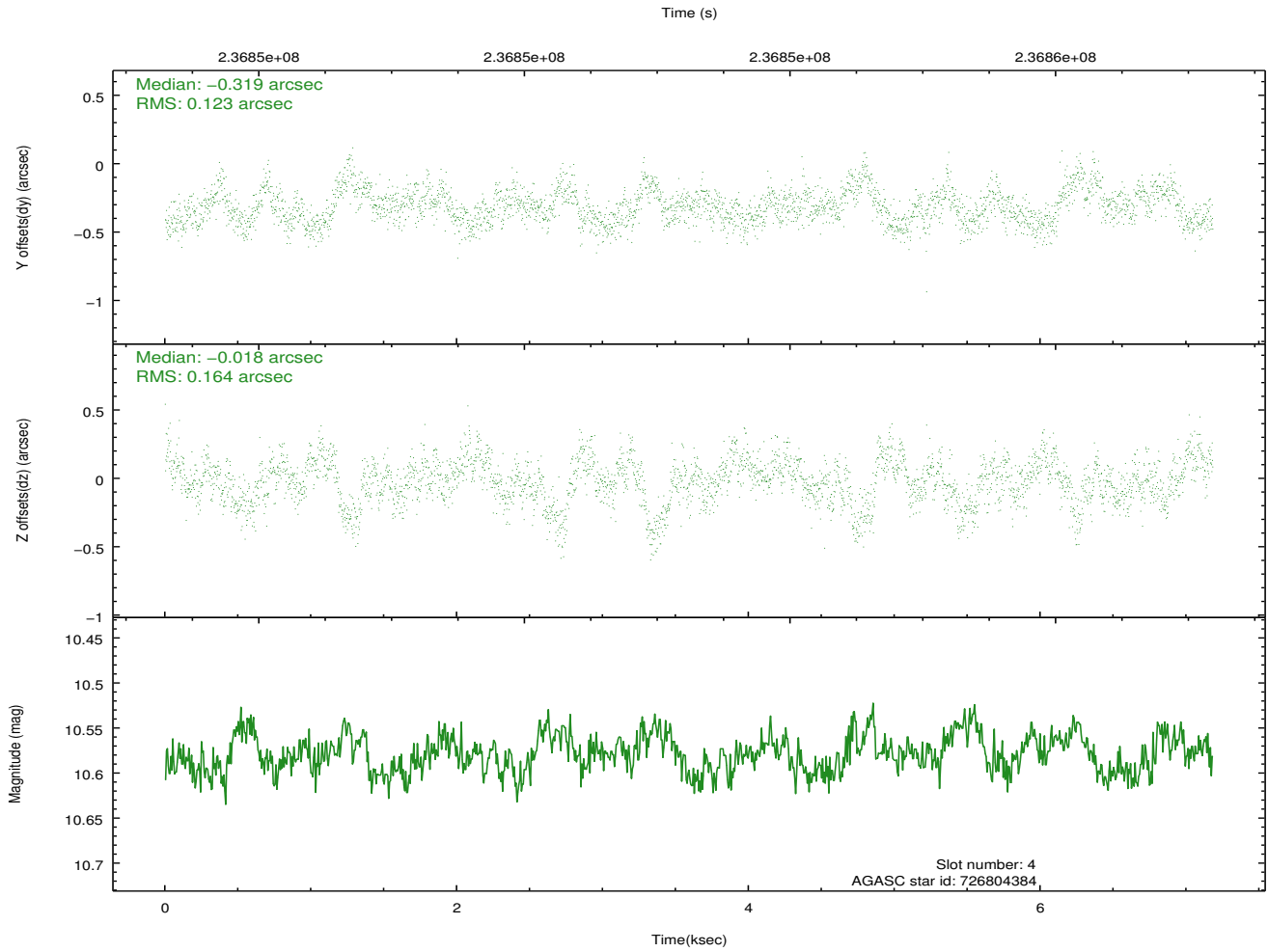
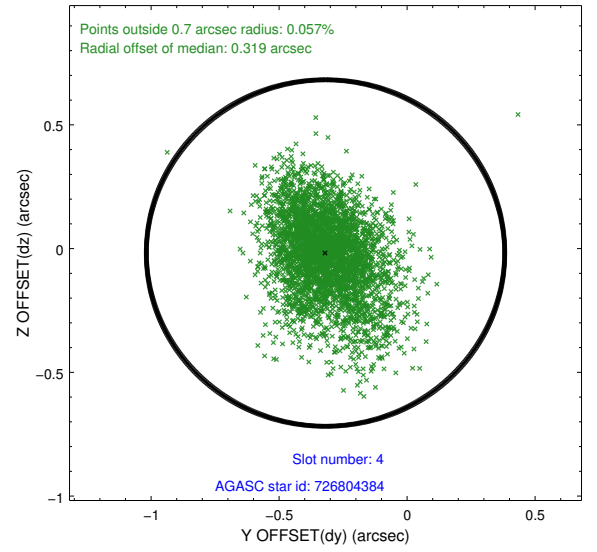
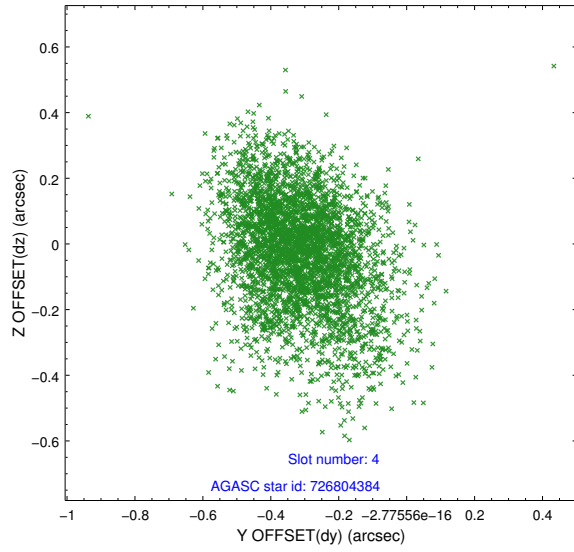
slot	status	id	mag	n_pts	med_dy	med_dz	dr1	dr2	ra	dec	mean_y	mean_z
0	FID	ACIS-S-2	7.10	1752	-0.076	-0.050	0.006	0.010	0.000000	0.000000	-759.77	-1730.57
1	FID	ACIS-S-4	7.20	1752	0.073	0.039	0.006	0.010	0.000000	0.000000	2153.28	177.20
2	FID	ACIS-S-6	7.35	1752	-0.024	0.018	0.007	0.012	0.000000	0.000000	403.28	815.47
3	GUIDE	726804320	10.44	3432	-0.184	0.119	0.194	0.322	203.890975	-9.273004	-543.20	-2328.02
4	GUIDE	726804384	10.58	3499	-0.319	-0.018	0.210	0.373	204.057952	-9.038299	-1546.89	-2084.99
5	GUIDE	726935840	9.50	3499	0.489	-0.478	0.136	0.210	205.084608	-9.297514	-2002.04	1653.71
6	GUIDE	727320712	10.43	3500	-0.039	0.342	0.181	0.287	204.468965	-10.254166	1999.05	868.91
7	GUIDE	727195016	8.52	3502	0.046	0.037	0.077	0.129	203.583390	-10.038970	2423.33	-2336.38

2.4 Star Slots

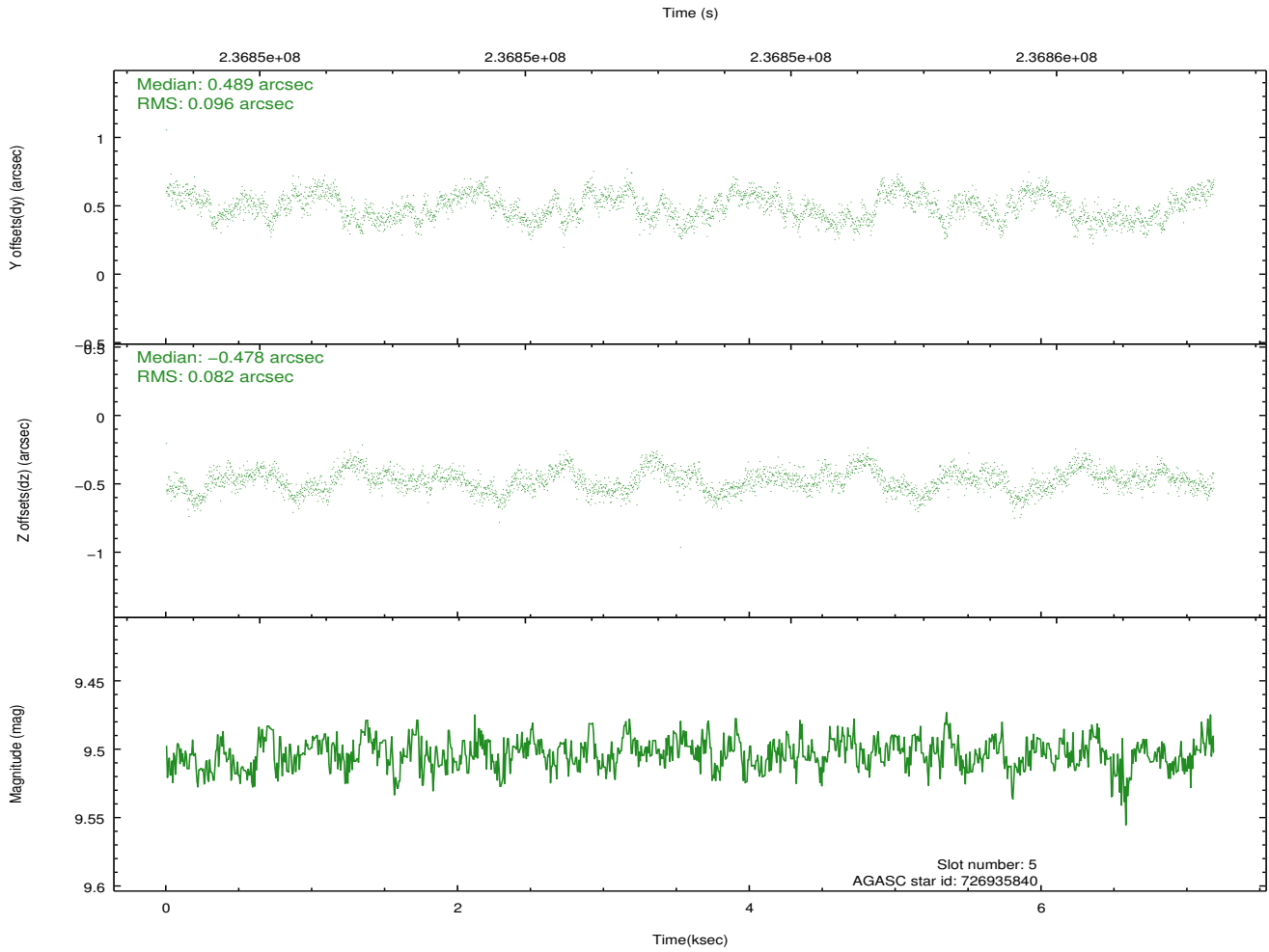
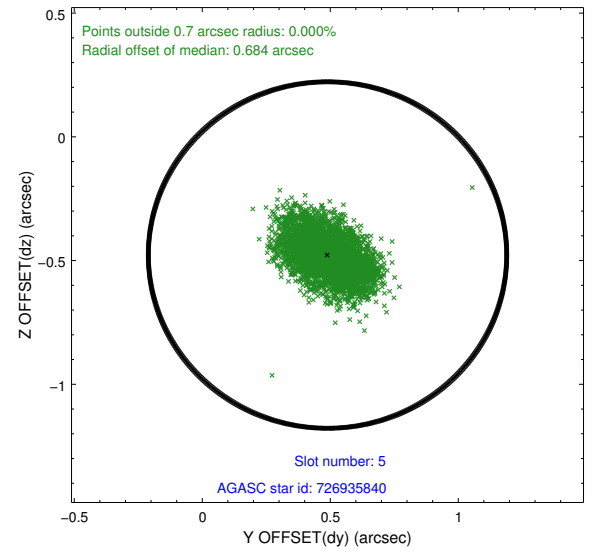
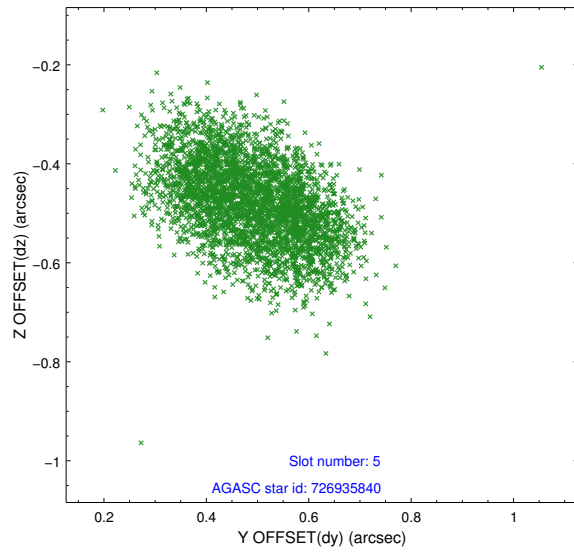
2.4.1 Slot 3



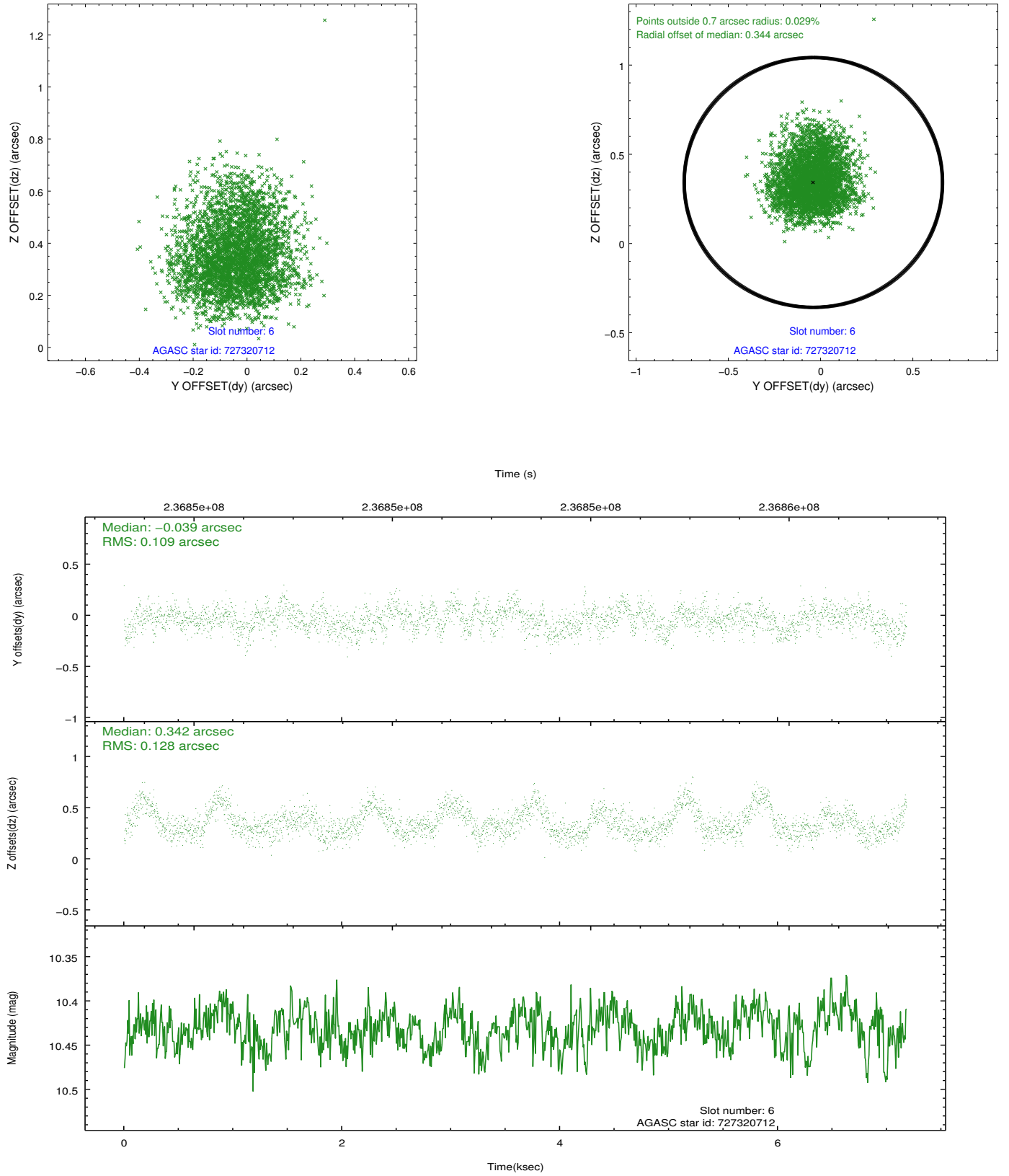
2.4.2 Slot 4



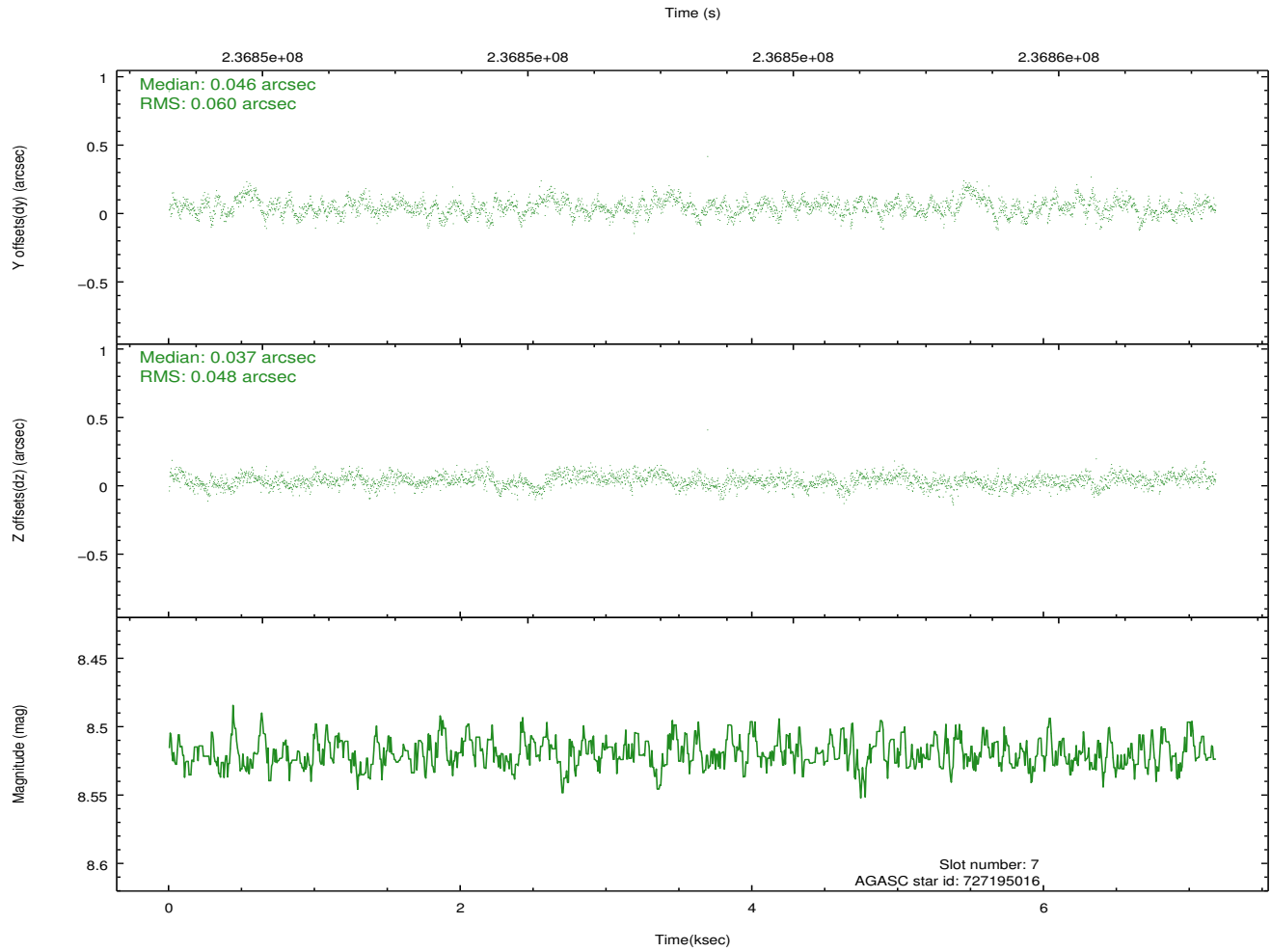
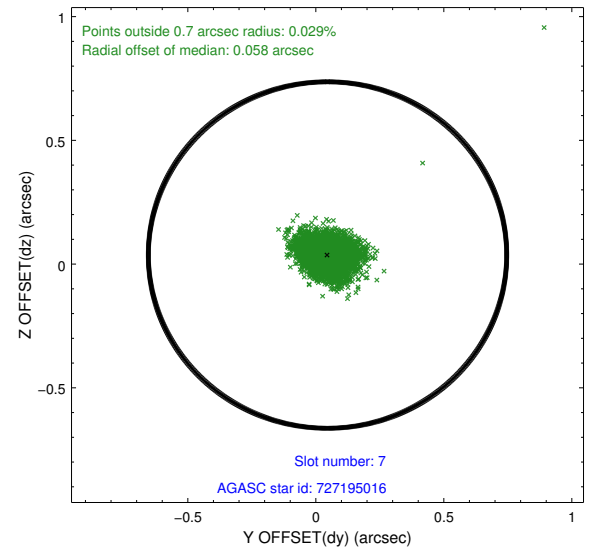
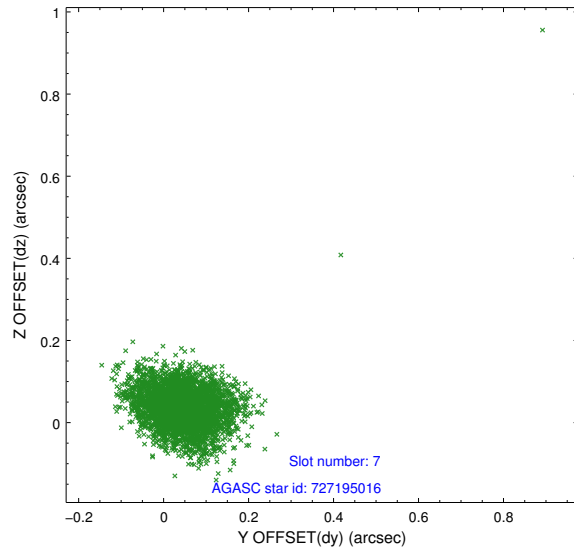
2.4.3 Slot 5



2.4.4 Slot 6

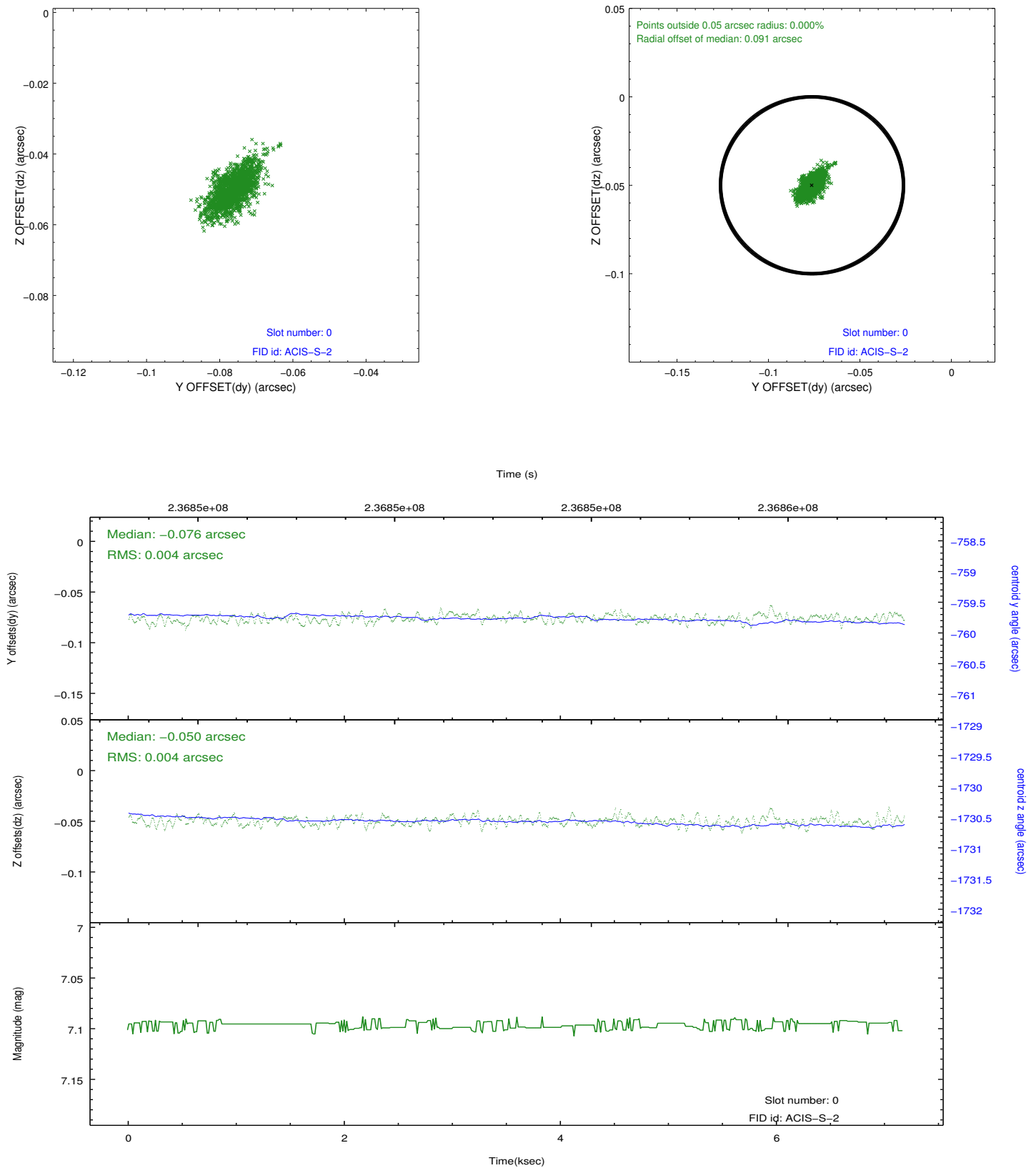


2.4.5 Slot 7

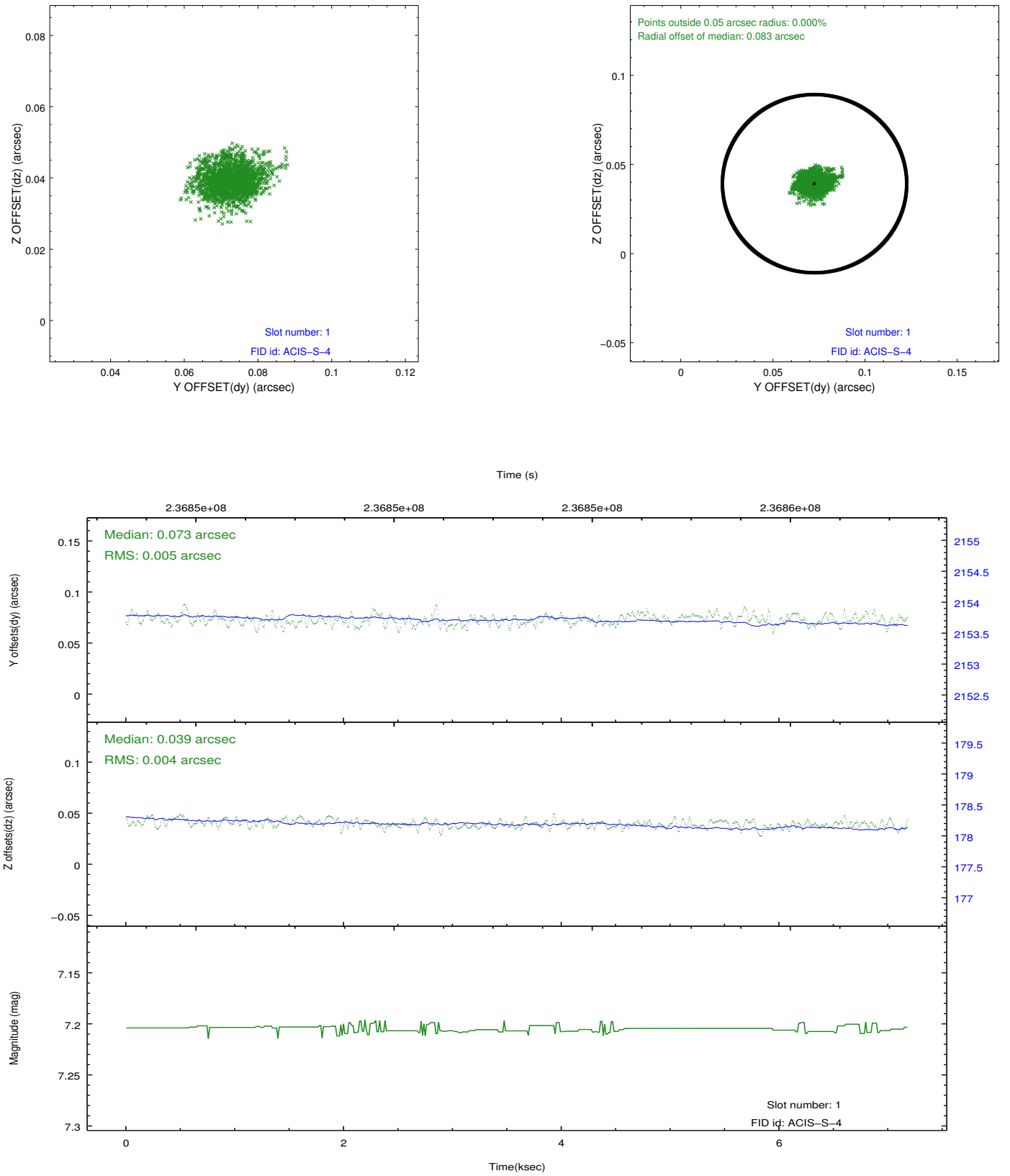


2.5 FID Slots

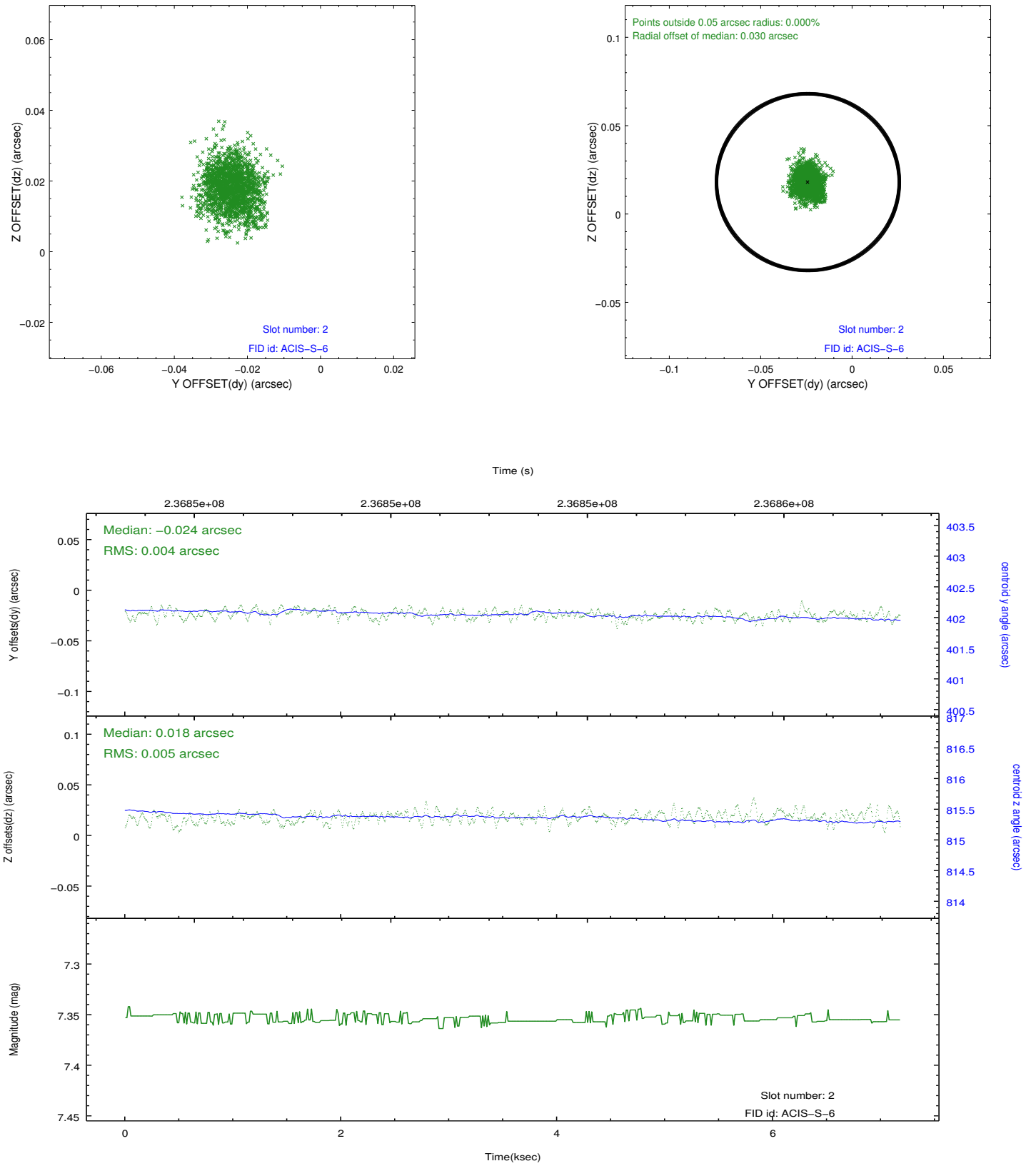
2.5.1 Slot 0



2.5.2 Slot 1



2.5.3 Slot 2



A Summary

A.1 Status

V&V Scientist	Beth Sundheim
V&V Date (YYYY-MM-DD)	2013.01.11
V&V Edition	1
V&V Disposition and Status	OK
V&V Charge Time	7.177599

A.2 Comments