

V&V Reference Report

L2 ASCDS Version : 7.6.7.1

Observation 6319 - L2 Version 002
Chandra X-Ray Center

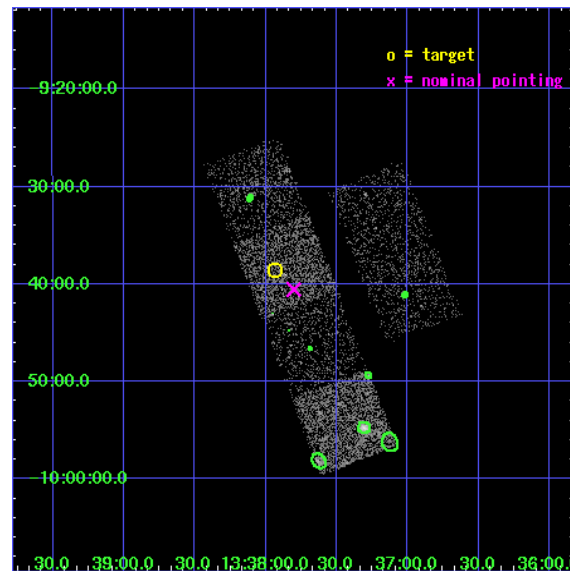
L2 Processing Date : Mar 11 2006

Contents

1	Front	2
2	OBI	3
2.1	OBI	3
2.1.1	Images	3
2.1.2	Bias	3
2.1.3	Parameters	4
2.1.4	Events	4
2.2	Compared Parameters	5
2.3	Aspect	6
2.4	Star Slots	9
2.4.1	Slot 3	9
2.4.2	Slot 4	10
2.4.3	Slot 5	11
2.4.4	Slot 6	12
2.4.5	Slot 7	13
2.5	FID Slots	14
2.5.1	Slot 0	14
2.5.2	Slot 1	15
2.5.3	Slot 2	16
3	Point Sources	17
A	Summary	18
A.1	Status	18
A.2	Comments	18

1 Front

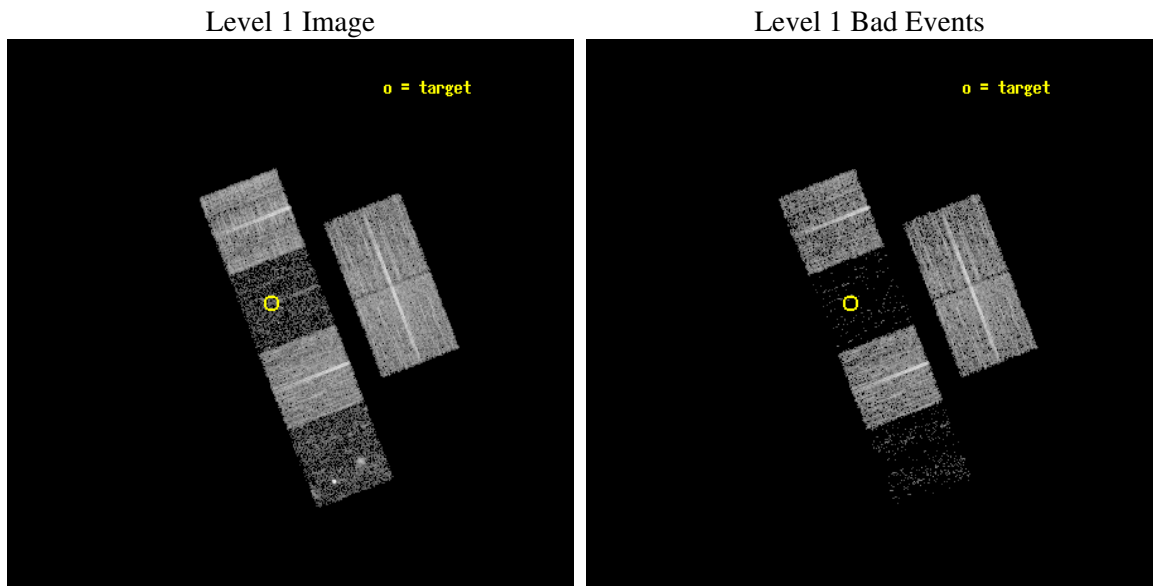
seq_num	100060
obs_id	6319
title	Comet 9P/Tempel 1 During the Deep Impact Encounter
observer	Dr. Carey Lisse
object	9P/Tempel 1
dtcycle	0
cycle	P
ra_targ	204.483608
dec_targ	-9.642716
ra_nom	204.45050647808
dec_nom	-9.6760265053155
roll_nom	248.84792202451
revision	2
ontime	7177.5999732614
livetime	7086.7128805681
ontime2	7177.5999732614
ontime3	7177.5999732614
ontime5	7177.5999732614
ontime6	7177.5999732614
ontime7	7177.5999732614
ontime8	7177.5999732614
l2events	10828



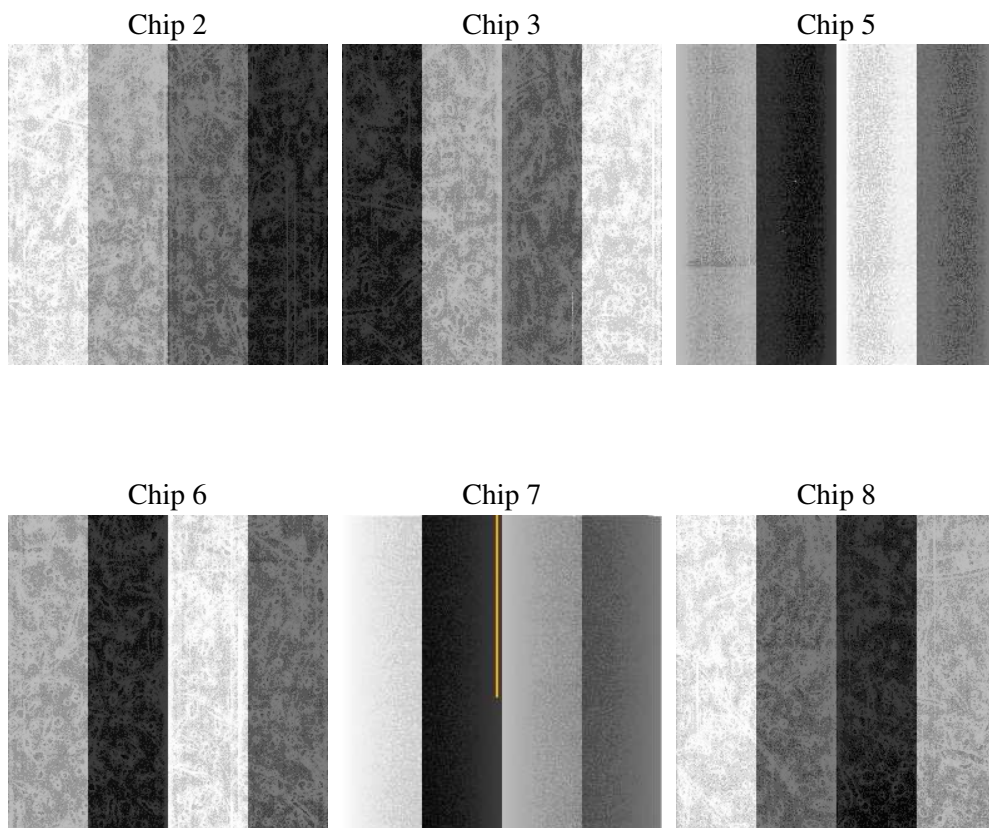
2 OBI

2.1 OBI

2.1.1 Images



2.1.2 Bias



2.1.3 Parameters

obi_num	0
ascdsver	7.6.7.1
caldsver	3.2.1
date	2006-03-12T02:27:04
revision	2

sched_exp_time	7000.000000
ontime	7509.4080932736
ontime2	7509.4080733359
ontime3	7509.4080733359
ontime5	7509.4080932736
ontime6	7509.4080932736
ontime7	7509.4080932736
ontime8	7509.4080733359
l1events	147049

2.1.4 Events

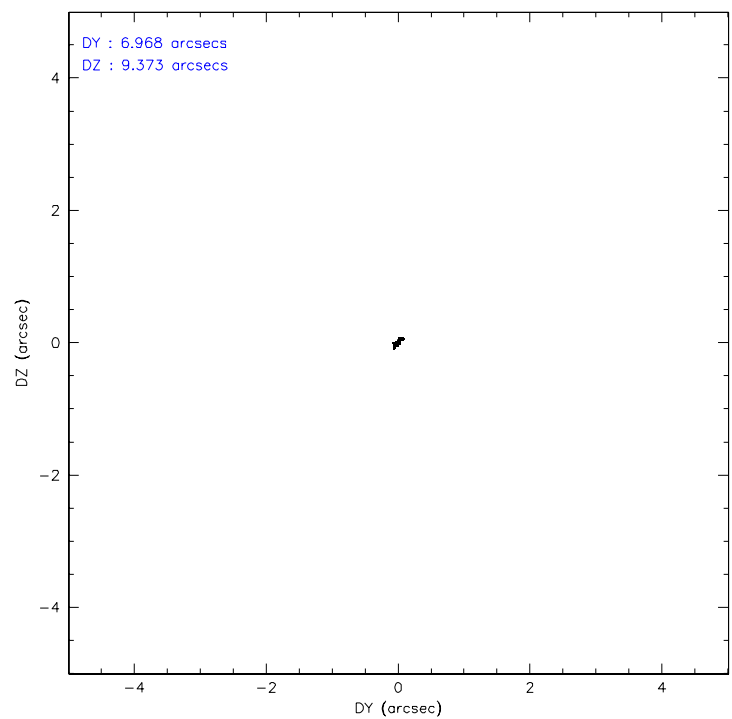
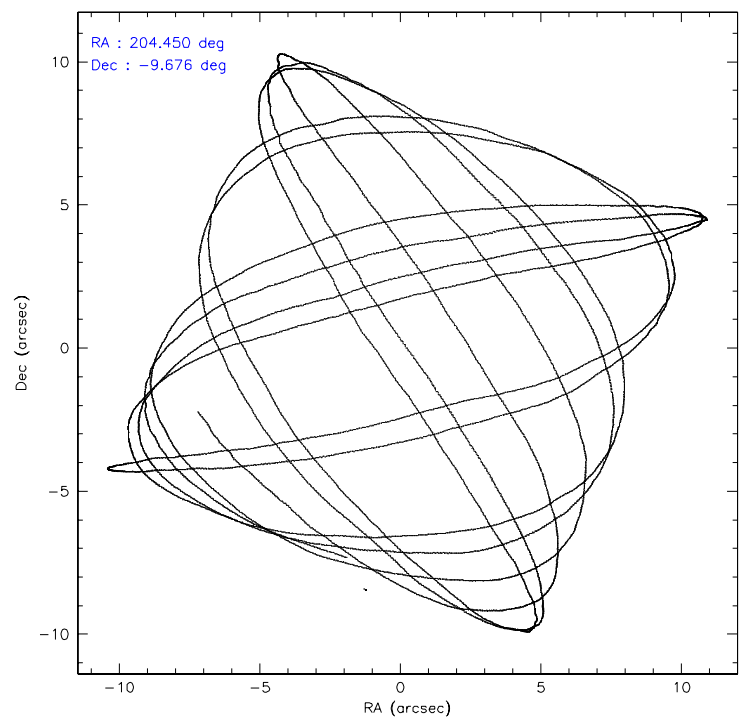
	ccd 2	ccd 3	ccd 5	ccd 6	ccd 7	ccd 8
level 1 events	36381	30958	7308	32412	4594	35396
rejected events	34840	29907	2257	31001	1242	26805
rejected %	95%	96%	30%	95%	27%	75%

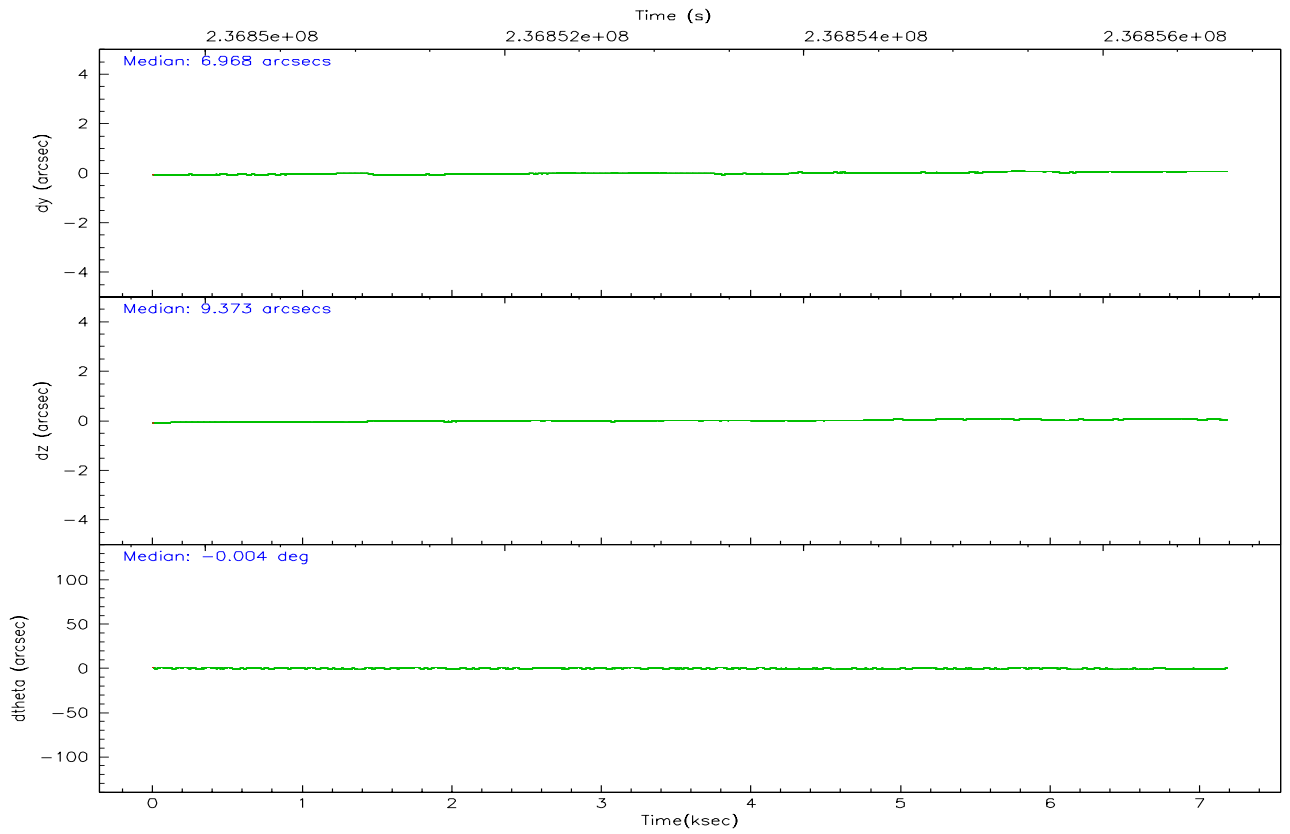
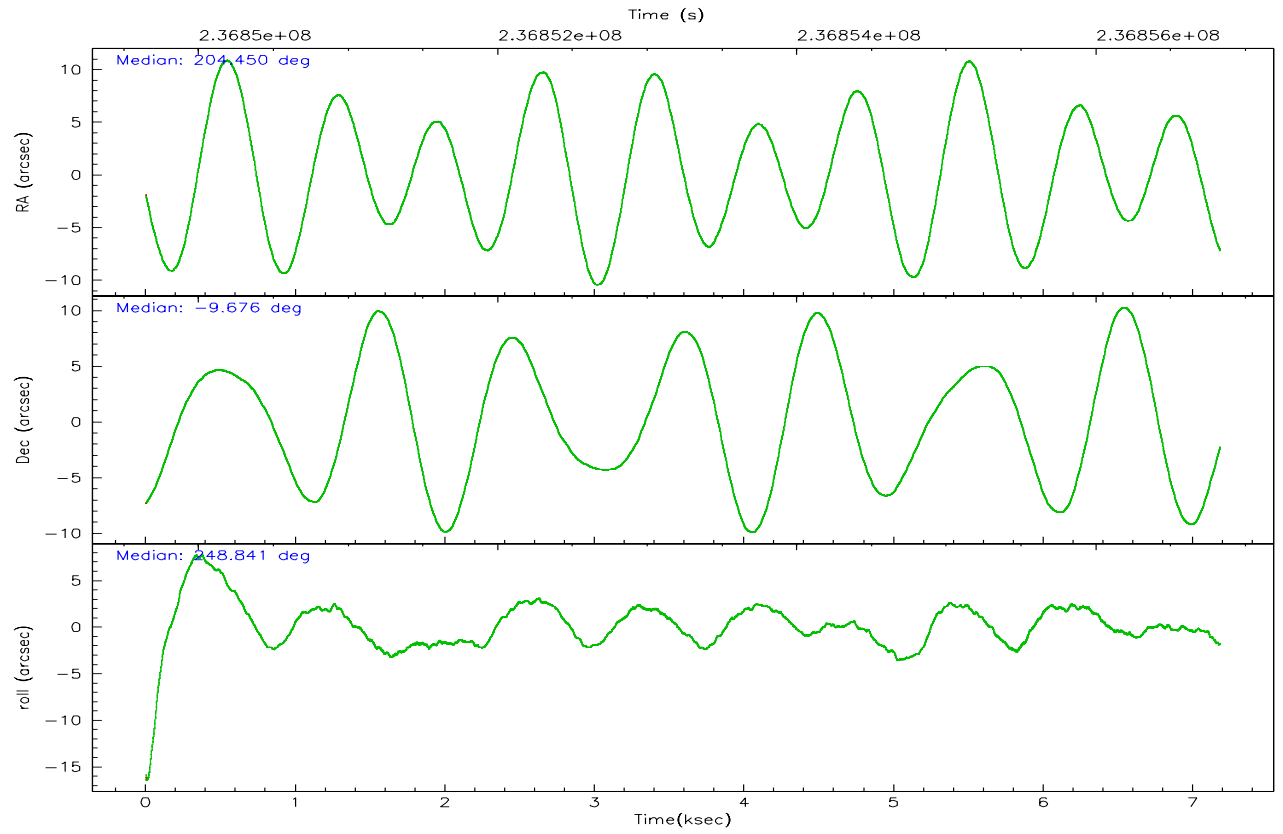
	ccd 2	ccd 3	ccd 5	ccd 6	ccd 7	ccd 8
grade 0 events	639	468	1653	684	875	2397
	1%	1%	22%	2%	19%	6%
grade 1 events	10	8	21	22	16	25
	0%	0%	0%	0%	0%	0%
grade 2 events	391	152	1979	292	1173	2083
	1%	0%	27%	0%	25%	5%
grade 3 events	205	174	516	196	509	1018
	0%	0%	7%	0%	11%	2%
grade 4 events	233	207	505	193	559	969
	0%	0%	6%	0%	12%	2%
grade 5 events	60	38	281	28	117	191
	0%	0%	3%	0%	2%	0%
grade 6 events	145	104	616	111	437	2440
	0%	0%	8%	0%	9%	6%
grade 7 events	34698	29807	1737	30886	908	26273
	95%	96%	23%	95%	19%	74%

2.2 Compared Parameters

Parameter	Planned	Actual	Parameter	Planned	Actual
Instrument	ACIS	ACIS	Obspar format version number	6	6
Detector	ACIS-235678	ACIS-235678	Obspar file type	PREDICTED	ACTUAL
Grating	NONE	NONE	Obspar update status	NONE	UPDATED
Data mode	VFAINT	VFAINT	On-chip summing requested	N	N
Observation mode	POINTING	POINTING	Subarray requested	NONE	NONE
Pointing RA	204.445898	204.4505064780803	Alternating exposures requested	N	N
Pointing Dec	-9.649148	-9.676026505315527	Primary exposure time	0.000000	3.2
Pointing Roll	248.690517	248.8479220245096			
SIM focus pos (mm)	-0.684267	-0.6828225247311905			
SIM defocus (mm)	0	0.001444936568705701			
SIM translation stage pos (mm)	-190.132523	-190.145094680475			
SIM translation stage offset (mm)	0	0.01257209746719923			
Observation start time	236849833.184000	236849457.07255			
Observation start date	2005-07-04T07:36:09	2005-07-04T07:30:57			
Observation end time	236856833.184000	236856967.24789			
Observation end date	2005-07-04T09:32:49	2005-07-04T09:36:07			
Read mode	TIMED	TIMED			

2.3 Aspect



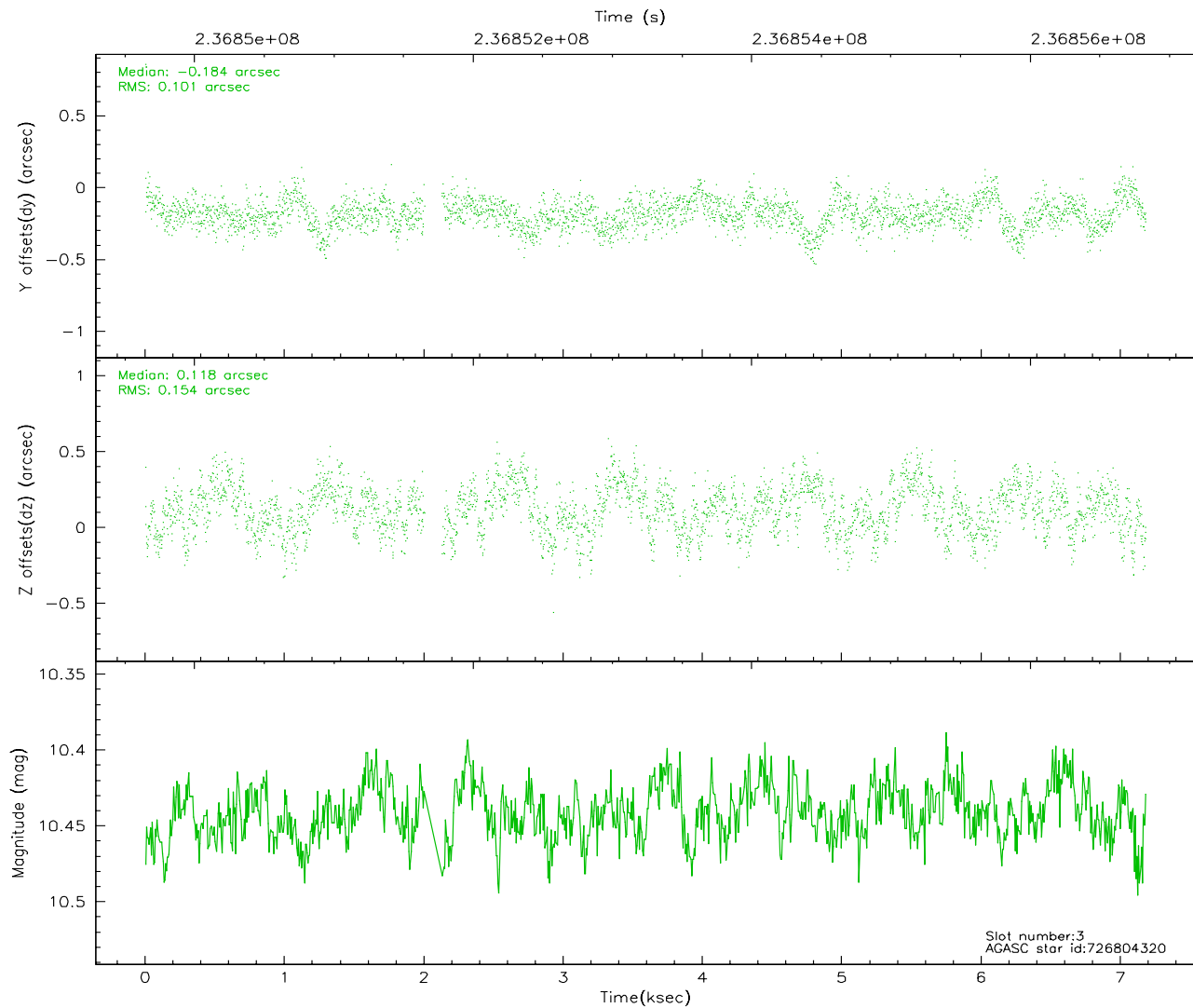
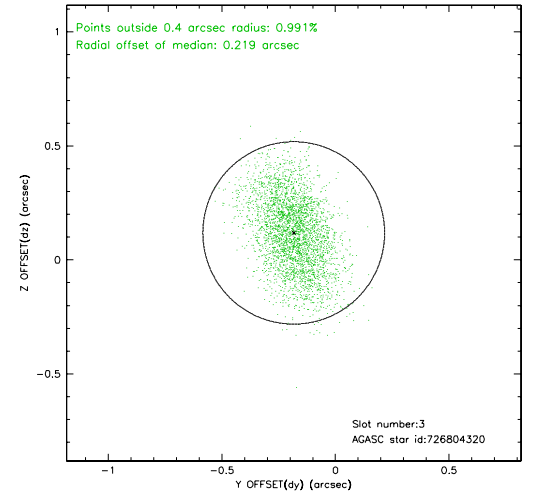
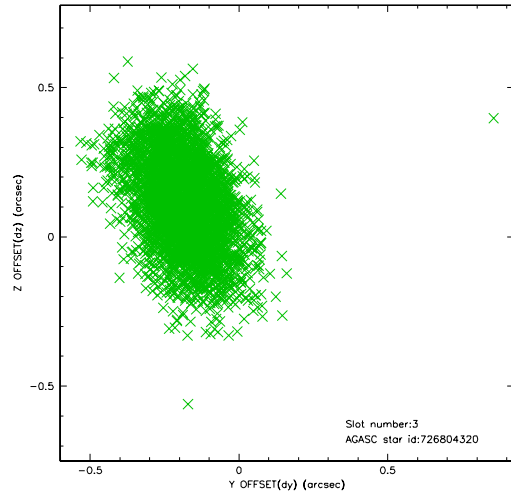


Slot Statistics

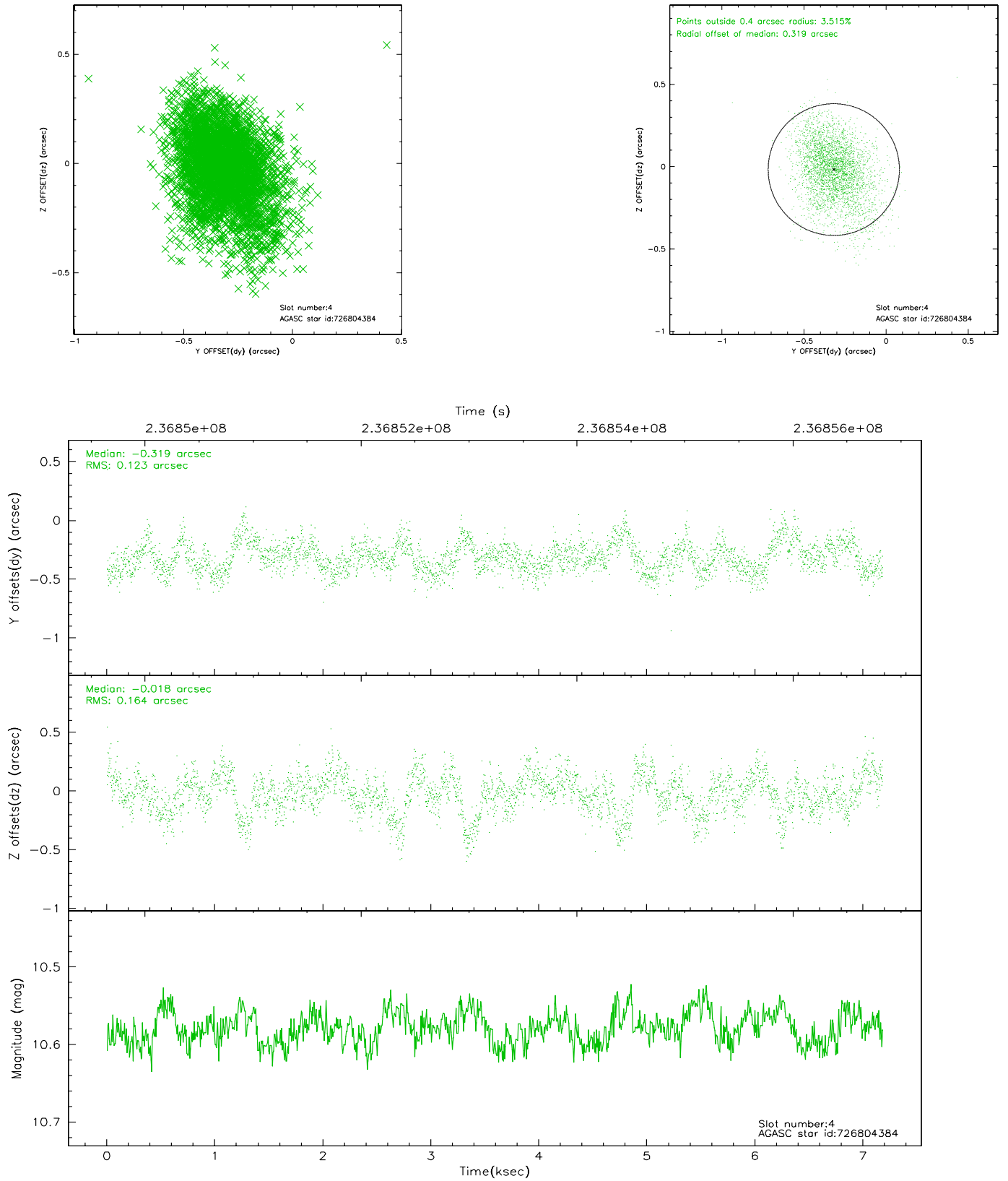
slot	status	id	mag	n_pts	med_dy	med_dz	dr1	dr2	ra	dec	mean_y	mean_z
0	FID	ACIS-S-2	7.10	1752	-0.051	-0.023	0.005	0.009	0.000000	0.000000	-759.75	-1730.53
1	FID	ACIS-S-4	7.20	1752	0.044	0.031	0.006	0.010	0.000000	0.000000	2153.24	177.20
2	FID	ACIS-S-6	7.35	1752	-0.021	-0.002	0.007	0.012	0.000000	0.000000	403.27	815.46
3	GUIDE	726804320	10.44	3432	-0.184	0.118	0.194	0.321	203.890975	-9.273004	-543.20	-2328.01
4	GUIDE	726804384	10.58	3499	-0.319	-0.018	0.210	0.373	204.057952	-9.038299	-1546.89	-2084.99
5	GUIDE	726935840	9.50	3499	0.489	-0.478	0.136	0.210	205.084608	-9.297514	-2002.04	1653.71
6	GUIDE	727320712	10.43	3500	-0.039	0.342	0.181	0.287	204.468965	-10.254166	1999.05	868.91
7	GUIDE	727195016	8.52	3502	0.046	0.037	0.078	0.129	203.583390	-10.038970	2423.33	-2336.38

2.4 Star Slots

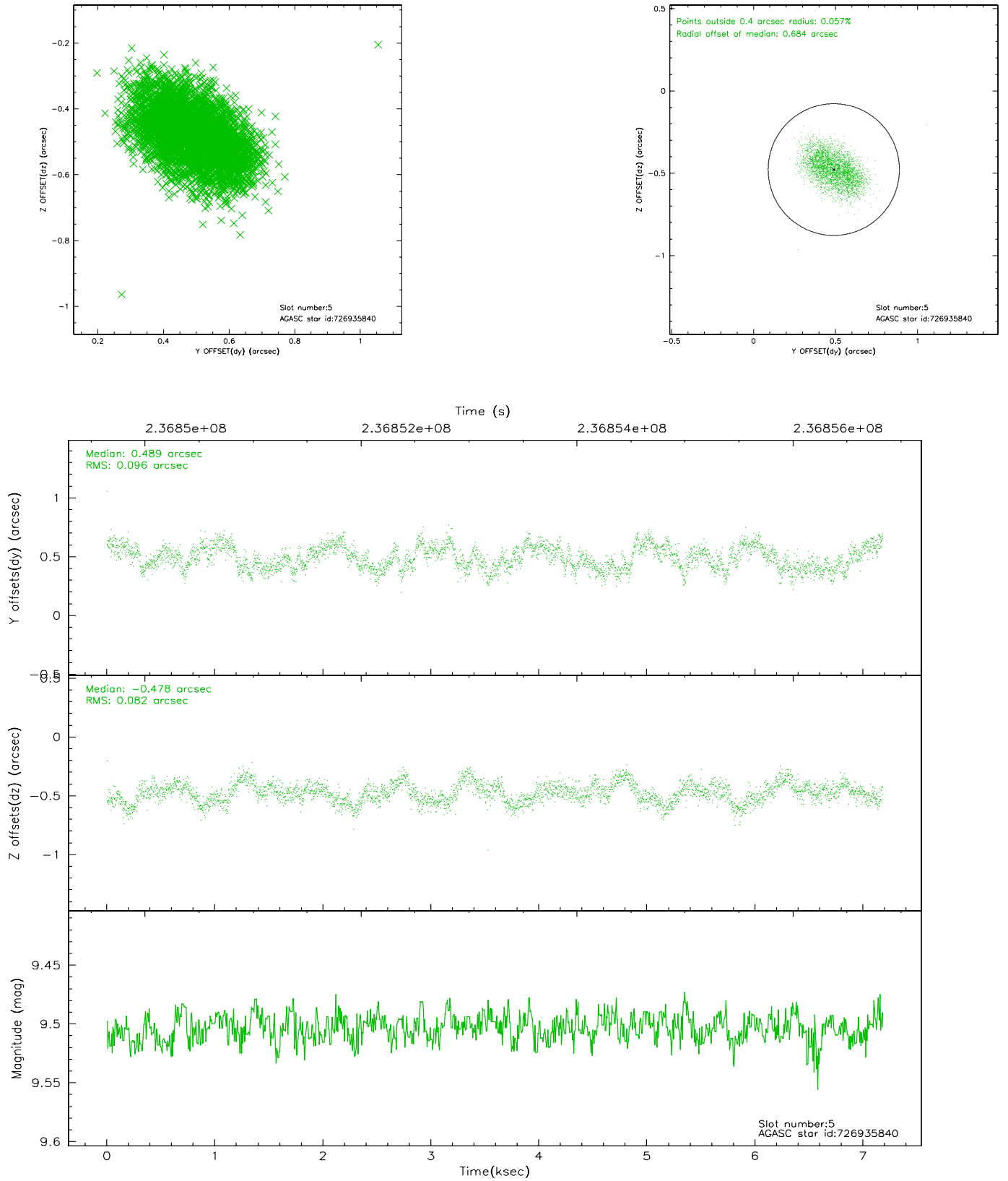
2.4.1 Slot 3



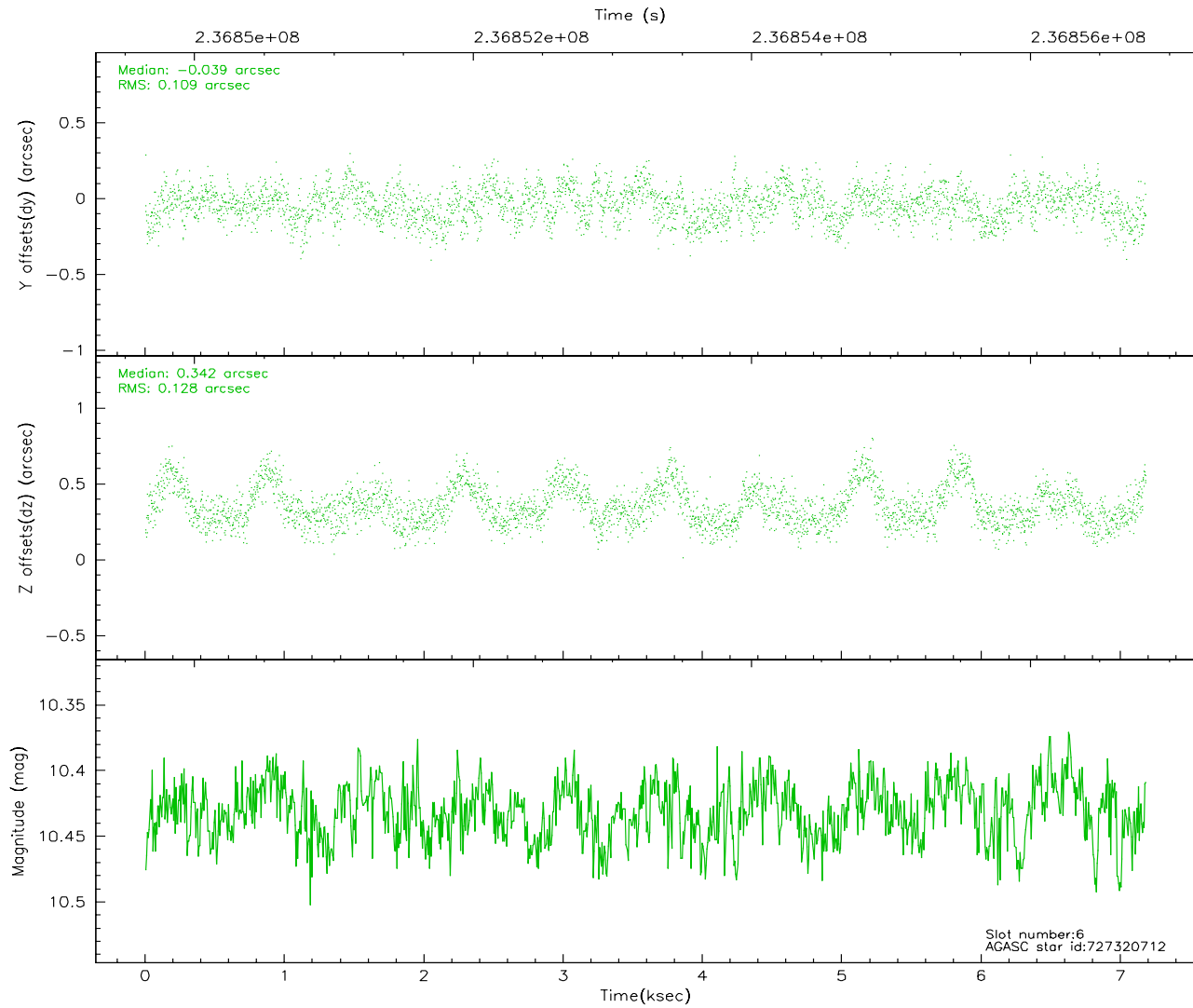
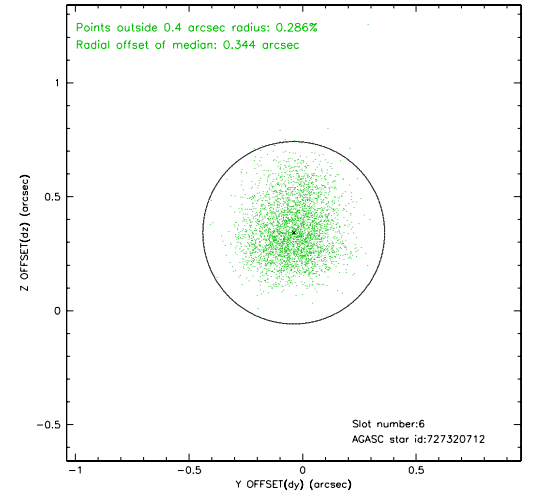
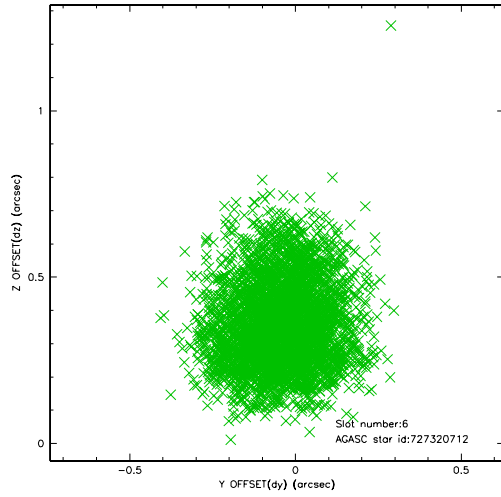
2.4.2 Slot 4



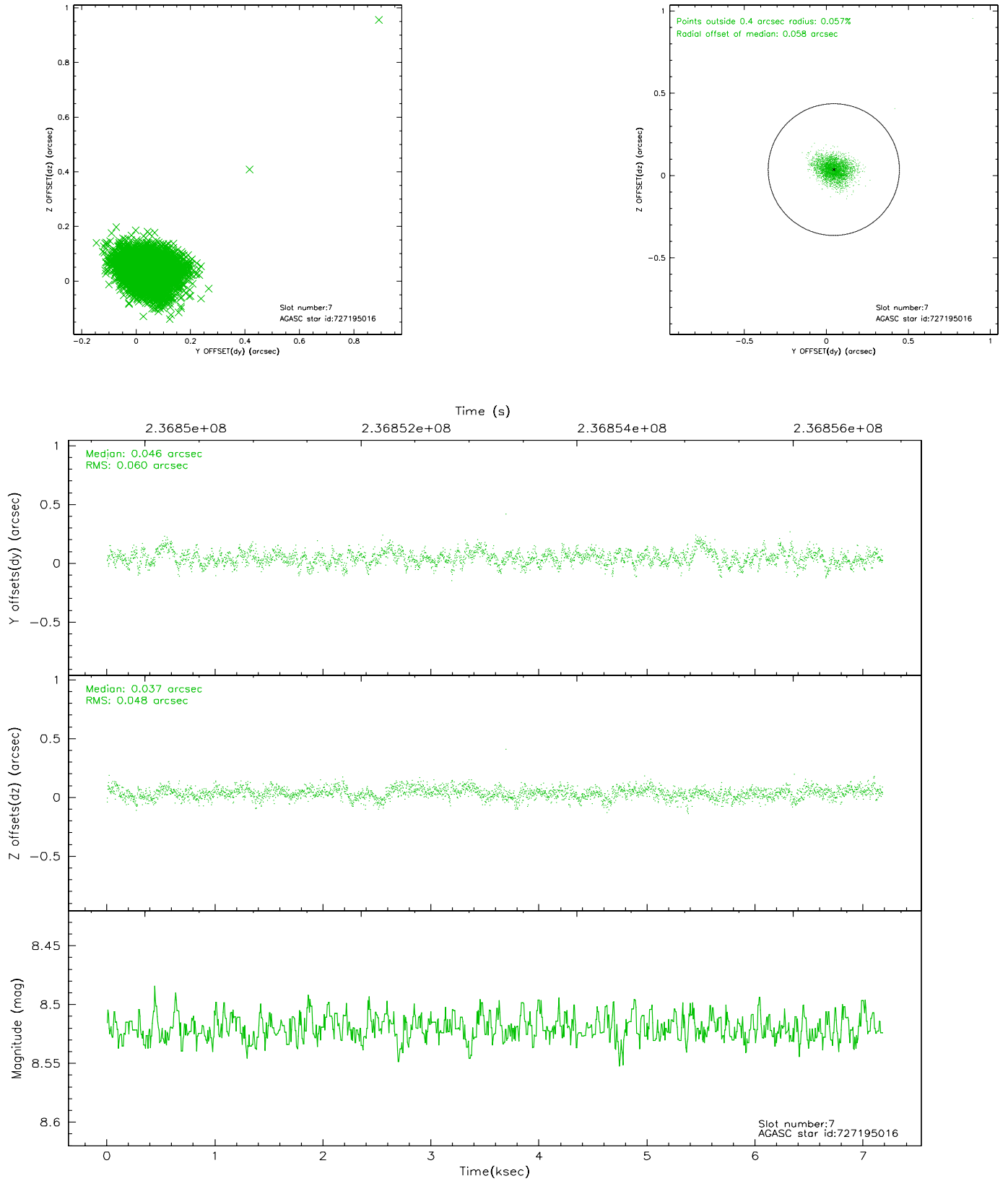
2.4.3 Slot 5



2.4.4 Slot 6

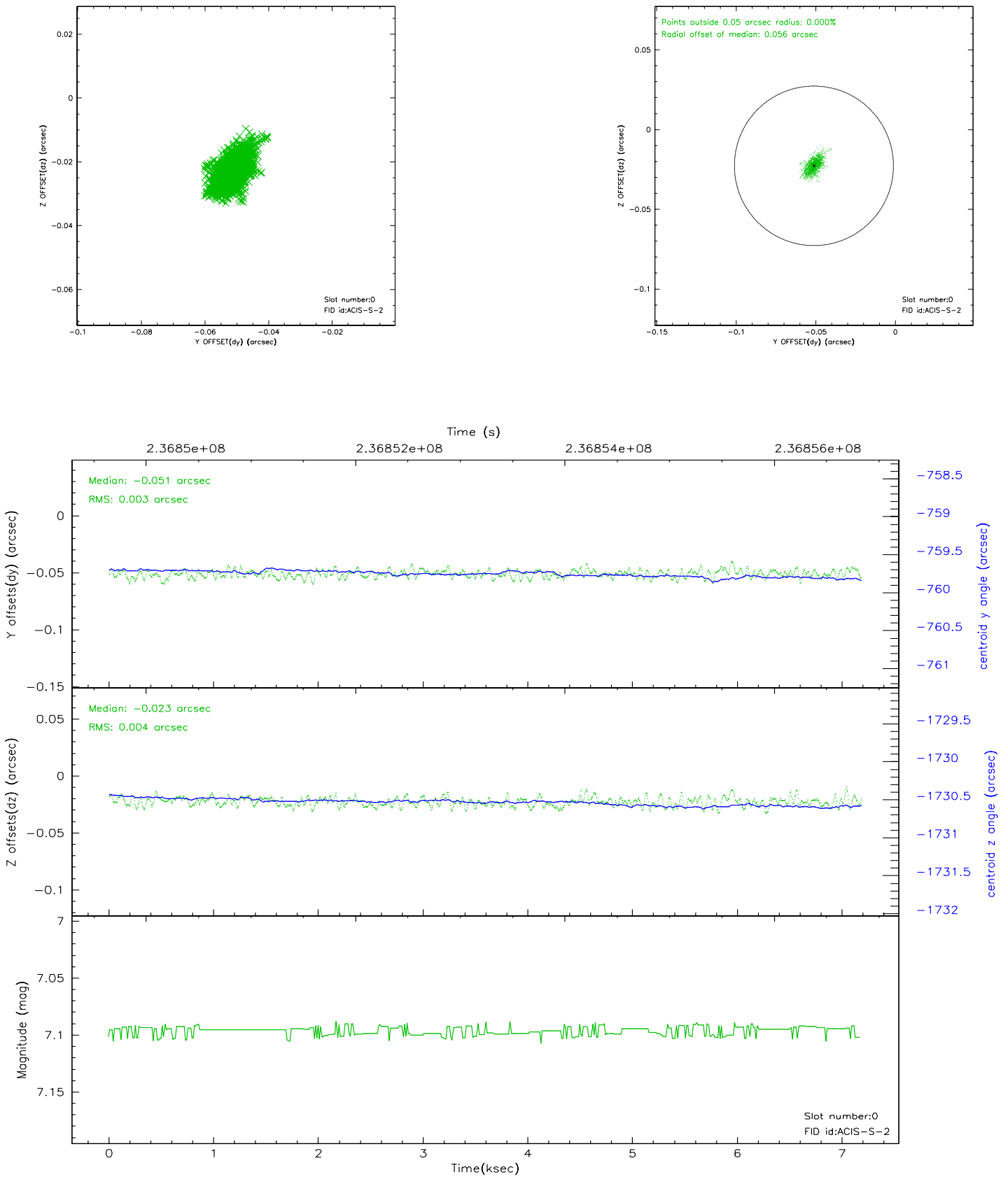


2.4.5 Slot 7

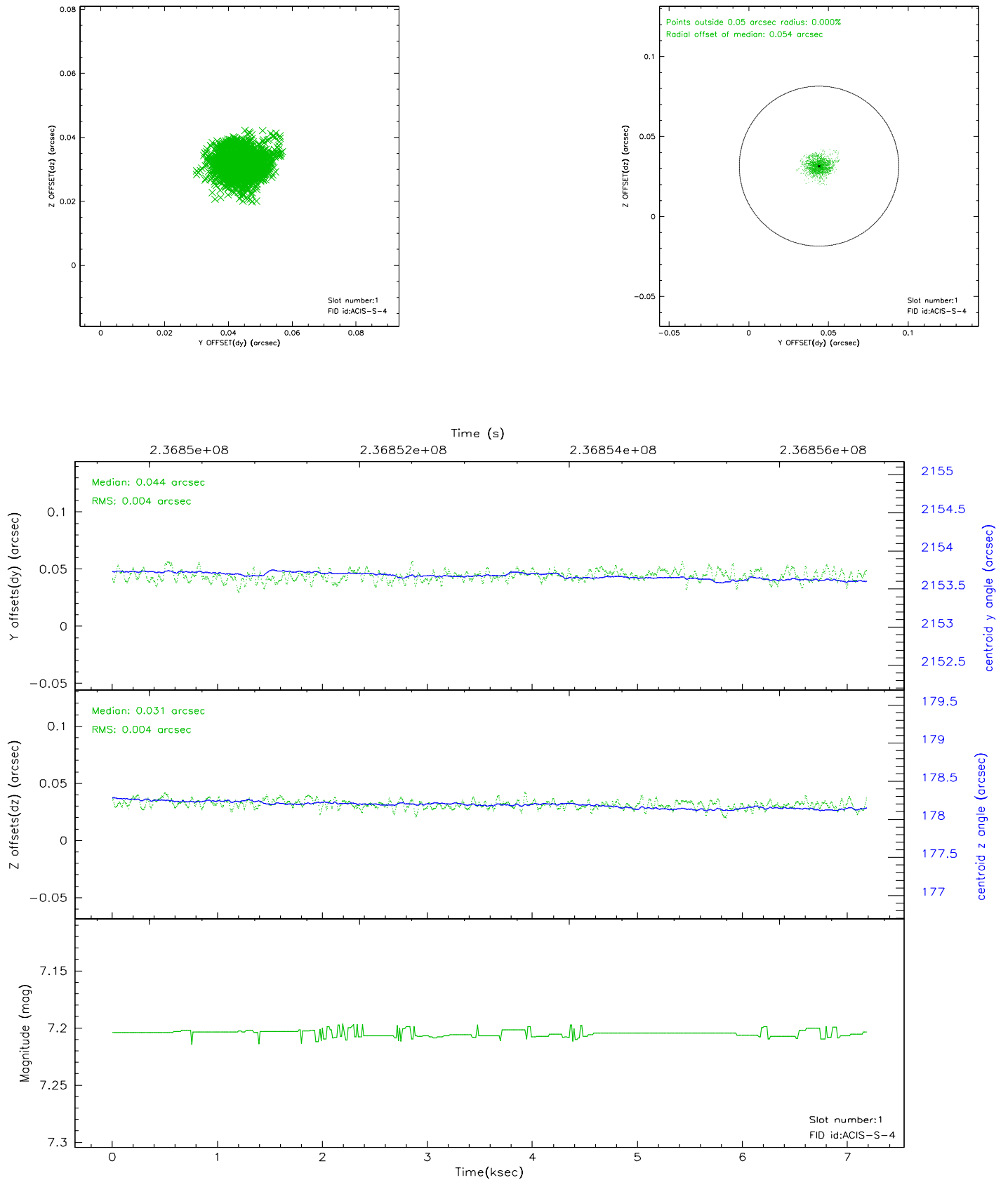


2.5 FID Slots

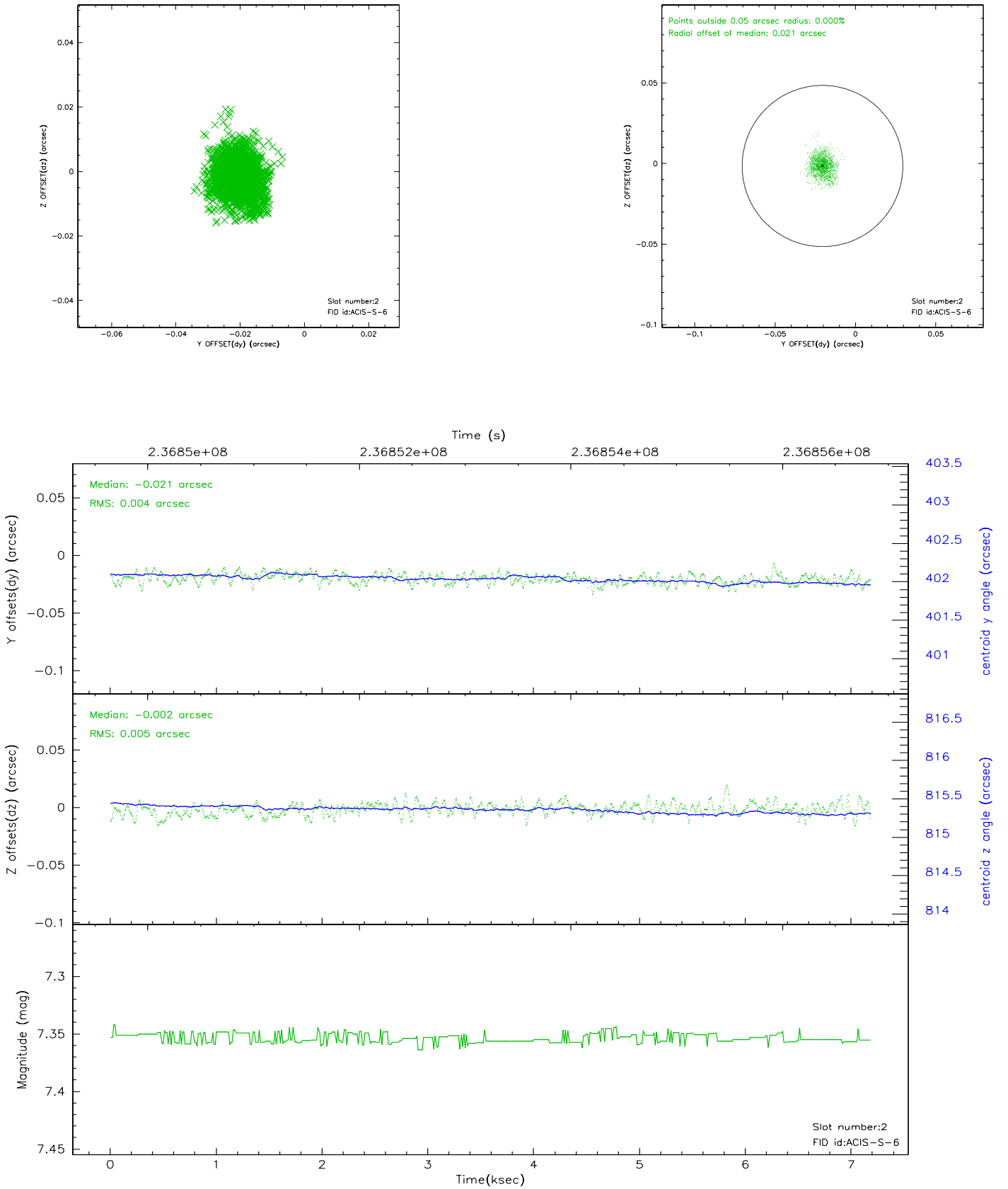
2.5.1 Slot 0



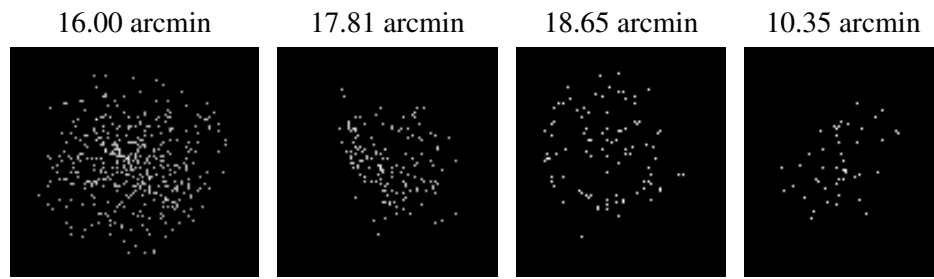
2.5.2 Slot 1



2.5.3 Slot 2



3 Point Sources



A Summary

A.1 Status

V&V Scientist	Beth Sundheim
V&V Date (YYYY-MM-DD)	2006.03.13
V&V Edition	1
V&V Disposition and Status	OK
V&V Charge Time	7.177599

A.2 Comments