

V&V Reference Report

L2 ASCDS Version : 7.6.7.1

Observation 6317 - L2 Version 002
Chandra X-Ray Center

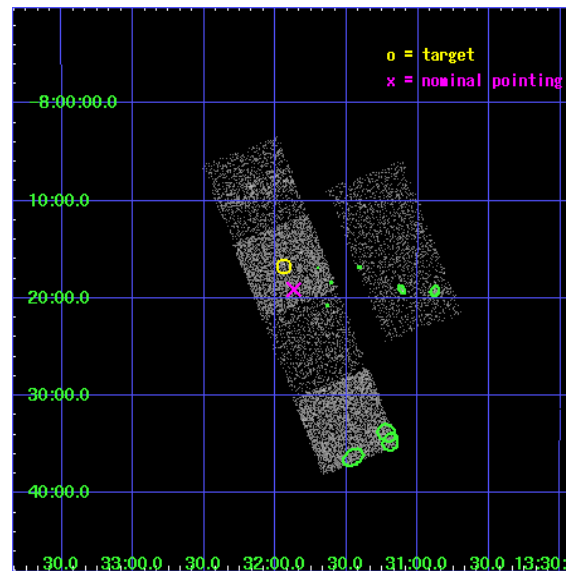
L2 Processing Date : Mar 11 2006

Contents

1	Front	2
2	OBI	3
2.1	OBI	3
2.1.1	Images	3
2.1.2	Bias	3
2.1.3	Parameters	4
2.1.4	Events	4
2.2	Compared Parameters	5
2.3	Aspect	6
2.4	Star Slots	9
2.4.1	Slot 3	9
2.4.2	Slot 4	10
2.4.3	Slot 5	11
2.4.4	Slot 6	12
2.4.5	Slot 7	13
2.5	FID Slots	14
2.5.1	Slot 0	14
2.5.2	Slot 1	15
2.5.3	Slot 2	16
3	Point Sources	17
A	Summary	18
A.1	Status	18
A.2	Comments	18

1 Front

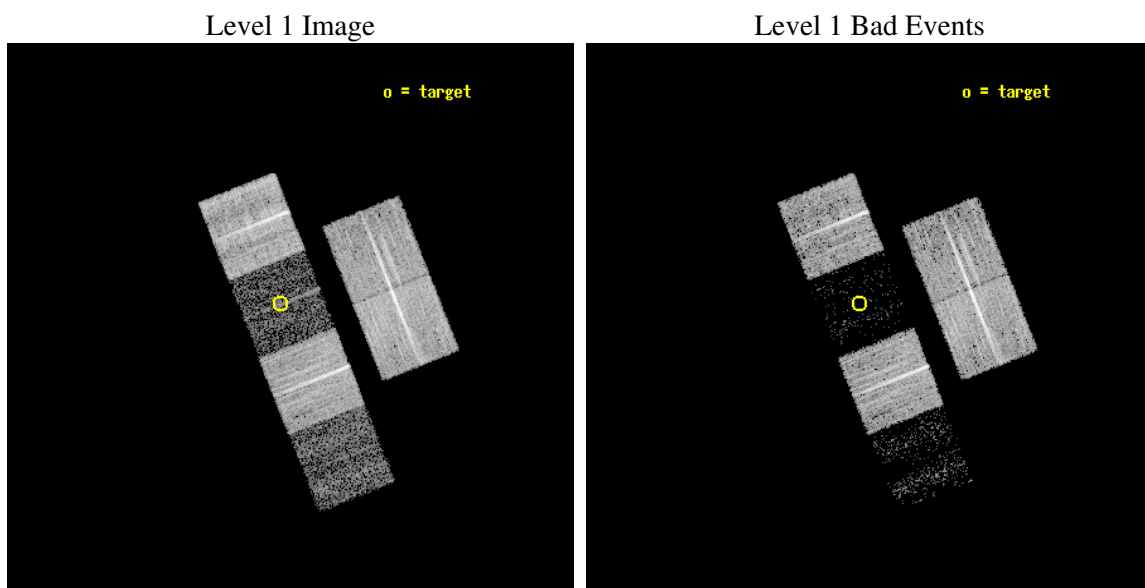
seq_num	100054
obs_id	6317
title	Comet 9P/Tempel 1 During the Deep Impact Encounter
observer	Dr. Carey Lisse
object	9P/Tempel 1
dtcycle	0
cycle	P
ra_targ	202.985336
dec_targ	-8.279387
ra_nom	202.96770566032
dec_nom	-8.3185479854034
roll_nom	248.3727954082
revision	2
ontime	10182.399962068
livetime	10053.464282643
ontime2	10179.158991784
ontime3	10182.399962068
ontime5	10182.399962068
ontime6	10182.399962068
ontime7	10182.399962068
ontime8	10182.399962068
l2events	14275



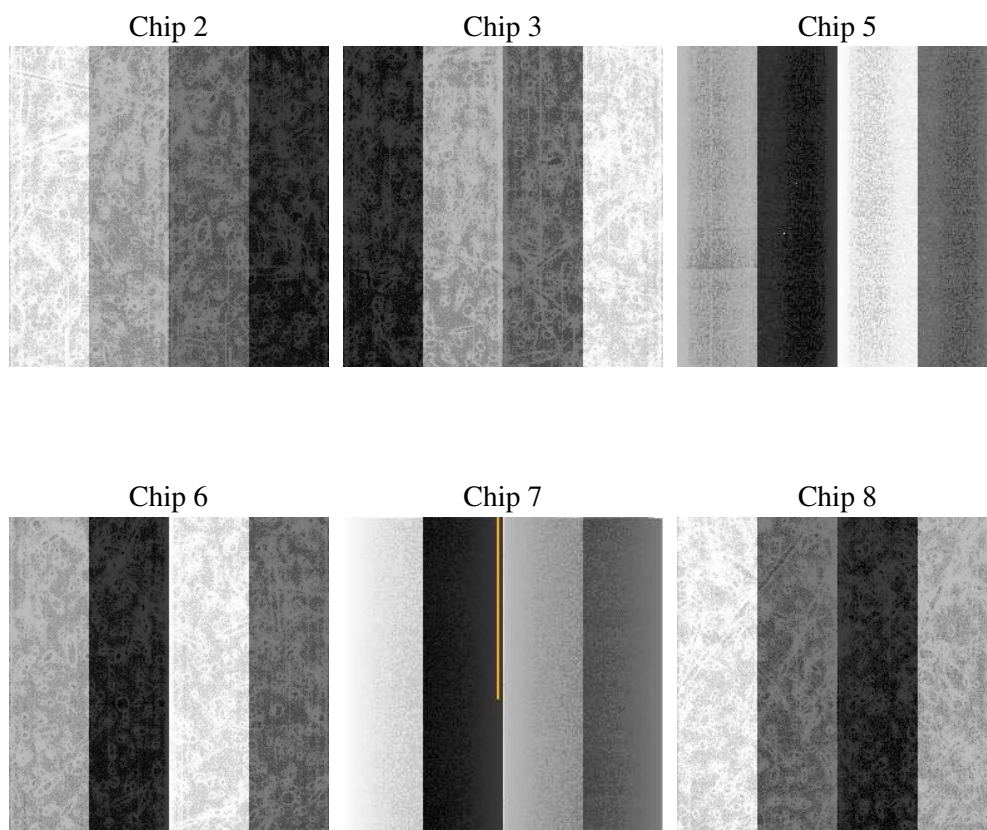
2 OBI

2.1 OBI

2.1.1 Images



2.1.2 Bias



2.1.3 Parameters

obi_num	0
ascdsver	7.6.7.1
caldsver	3.2.1
date	2006-03-12T00:34:03
revision	2

sched_exp_time	10000.000000
ontime	10510.574370325
ontime2	10507.333400041
ontime3	10510.574340403
ontime5	10510.574370325
ontime6	10510.574370325
ontime7	10510.574370325
ontime8	10510.574340403
l1events	208240

2.1.4 Events

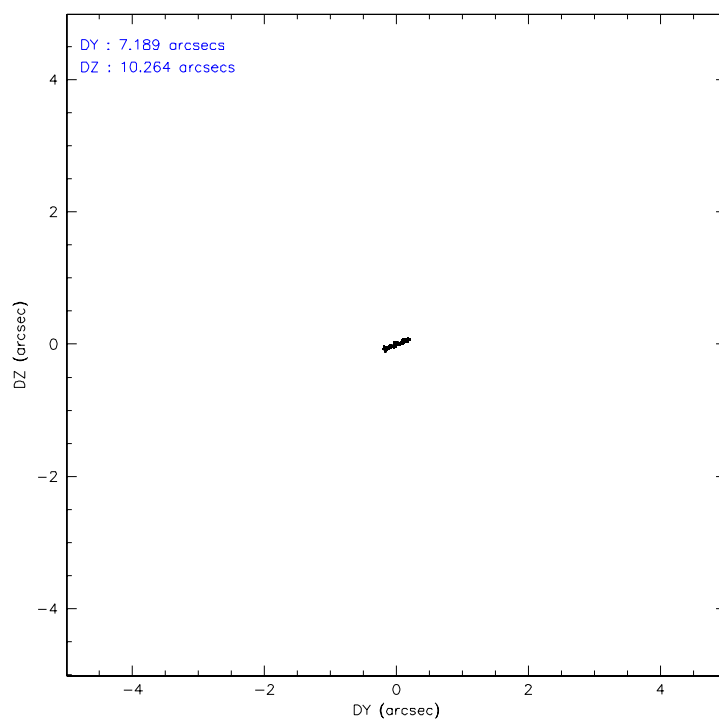
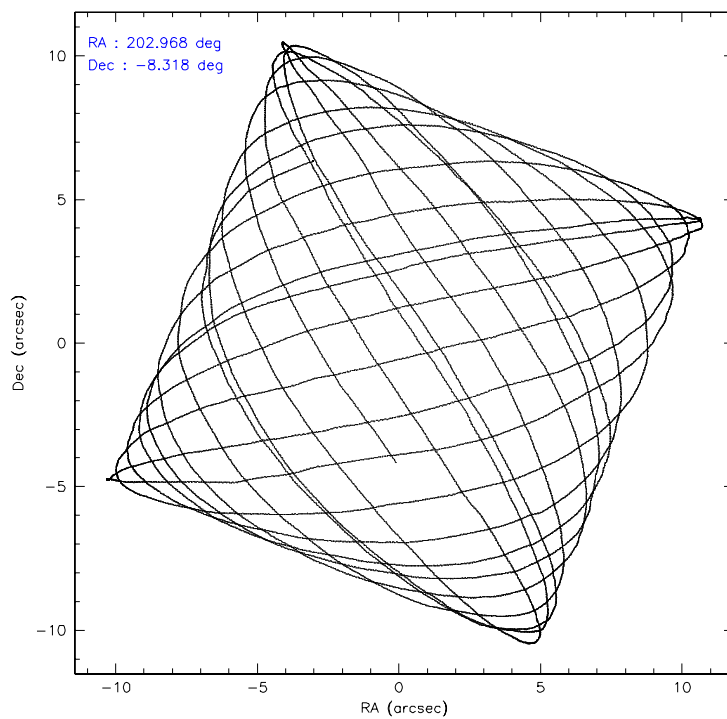
	ccd 2	ccd 3	ccd 5	ccd 6	ccd 7	ccd 8
level 1 events	53200	42162	7909	45826	6190	52953
rejected events	51007	40683	2840	43946	1440	39986
rejected %	95%	96%	35%	95%	23%	75%

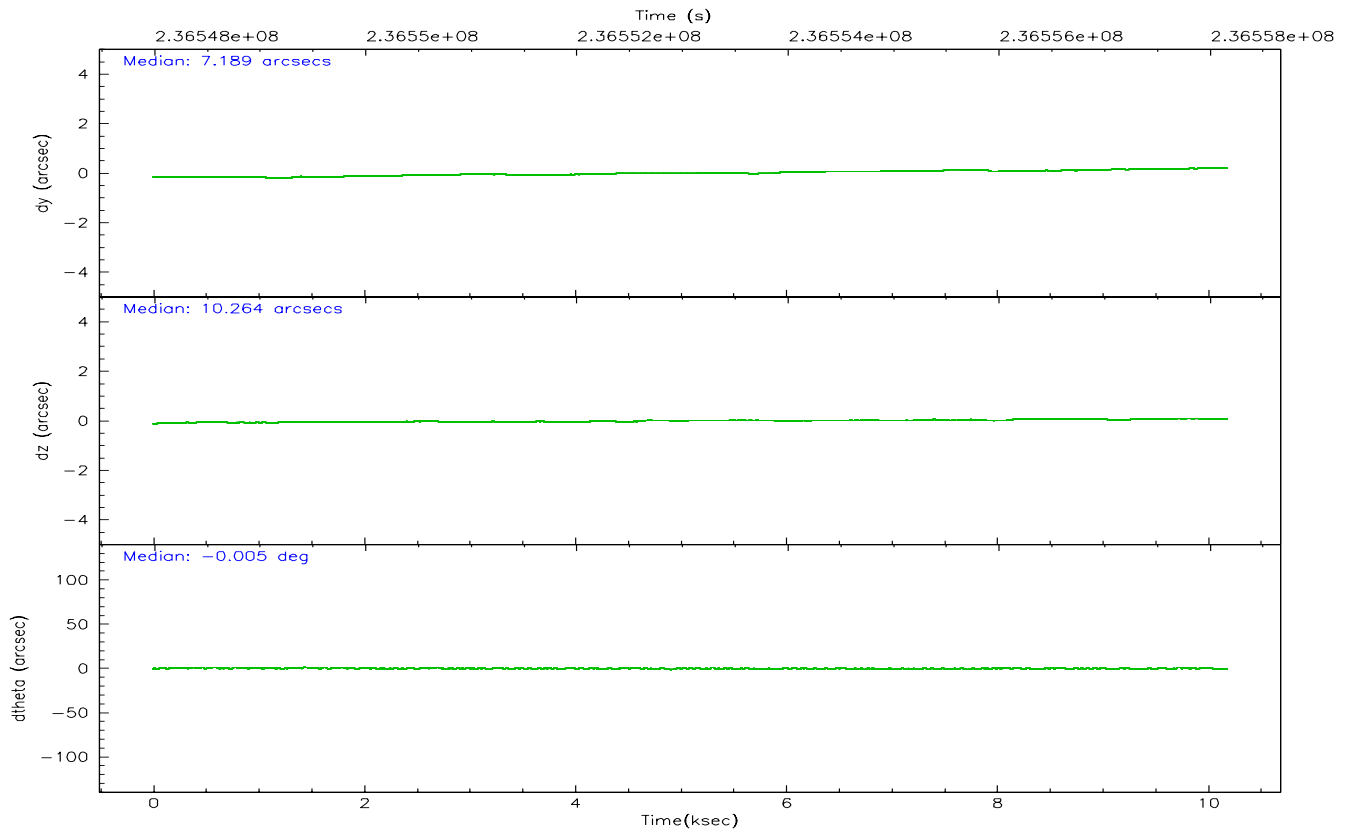
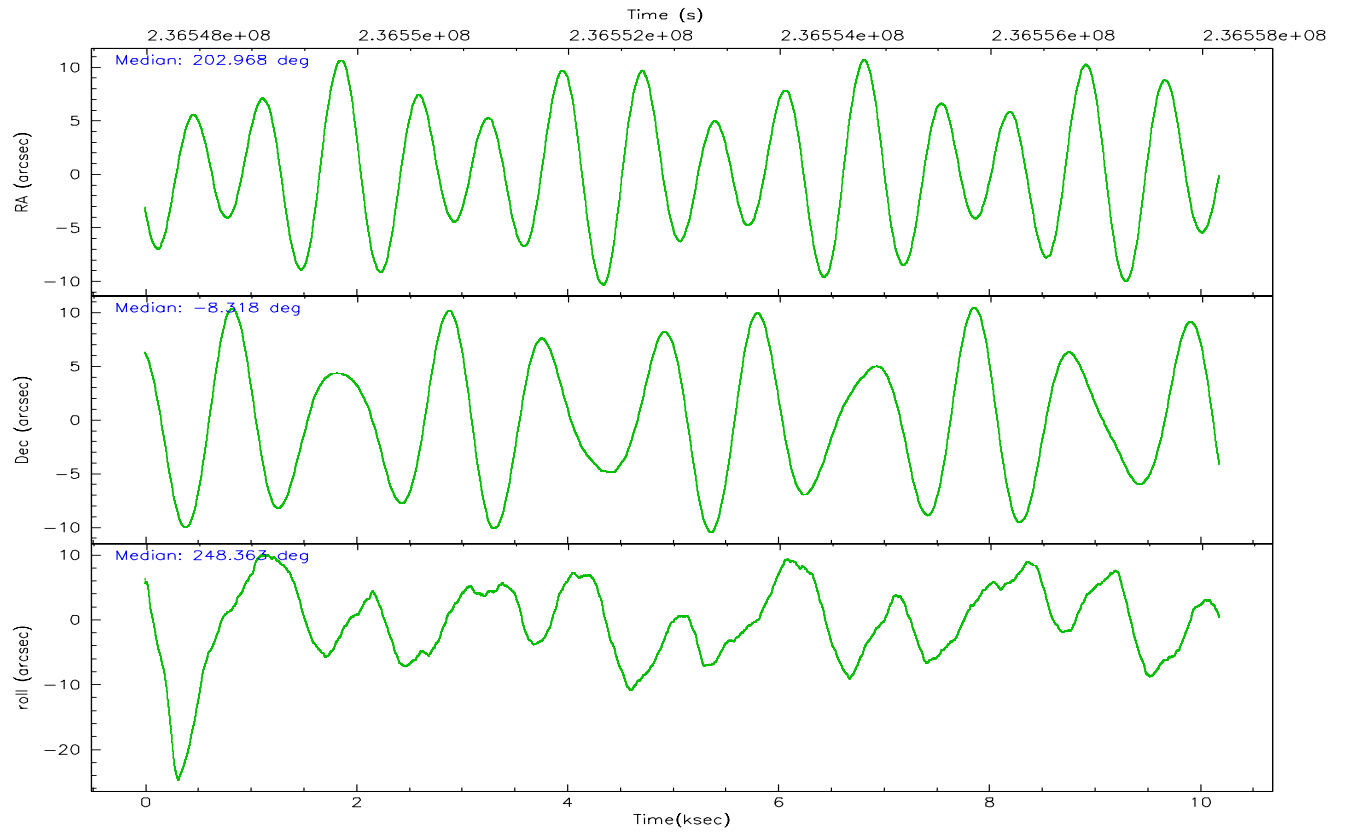
	ccd 2	ccd 3	ccd 5	ccd 6	ccd 7	ccd 8
grade 0 events	953	711	1109	879	1188	3699
	1%	1%	14%	1%	19%	6%
grade 1 events	7	15	19	19	33	41
	0%	0%	0%	0%	0%	0%
grade 2 events	482	187	2204	338	1701	2956
	0%	0%	27%	0%	27%	5%
grade 3 events	284	264	613	290	697	1595
	0%	0%	7%	0%	11%	3%
grade 4 events	306	233	644	277	726	1428
	0%	0%	8%	0%	11%	2%
grade 5 events	49	45	378	46	138	272
	0%	0%	4%	0%	2%	0%
grade 6 events	234	136	693	152	606	3624
	0%	0%	8%	0%	9%	6%
grade 7 events	50885	40571	2249	43825	1101	39338
	95%	96%	28%	95%	17%	74%

2.2 Compared Parameters

Parameter	Planned	Actual	Parameter	Planned	Actual
Instrument	ACIS	ACIS	Obspar format version number	6	6
Detector	ACIS-235678	ACIS-235678	Obspar file type	PREDICTED	ACTUAL
Grating	NONE	NONE	Obspar update status	NONE	UPDATED
Data mode	VFAINT	VFAINT	On-chip summing requested	N	N
Observation mode	POINTING	POINTING	Subarray requested	NONE	NONE
Pointing RA	202.963352	202.9677056603213	Alternating exposures requested	N	N
Pointing Dec	-8.291693	-8.318547985403391	Primary exposure time	0.000000	3.2
Pointing Roll	248.215543	248.3727954082035			
SIM focus pos (mm)	-0.684267	-0.6828225247311905			
SIM defocus (mm)	0	0.001444936568705701			
SIM translation stage pos (mm)	-190.132523	-190.1400660498719			
SIM translation stage offset (mm)	0	0.00754346686406393			
Observation start time	236548160.184000	236547784.18375			
Observation start date	2005-06-30T19:48:16	2005-06-30T19:43:04			
Observation end time	236558160.184000	236558294.53424			
Observation end date	2005-06-30T22:34:56	2005-06-30T22:38:14			
Read mode	TIMED	TIMED			

2.3 Aspect



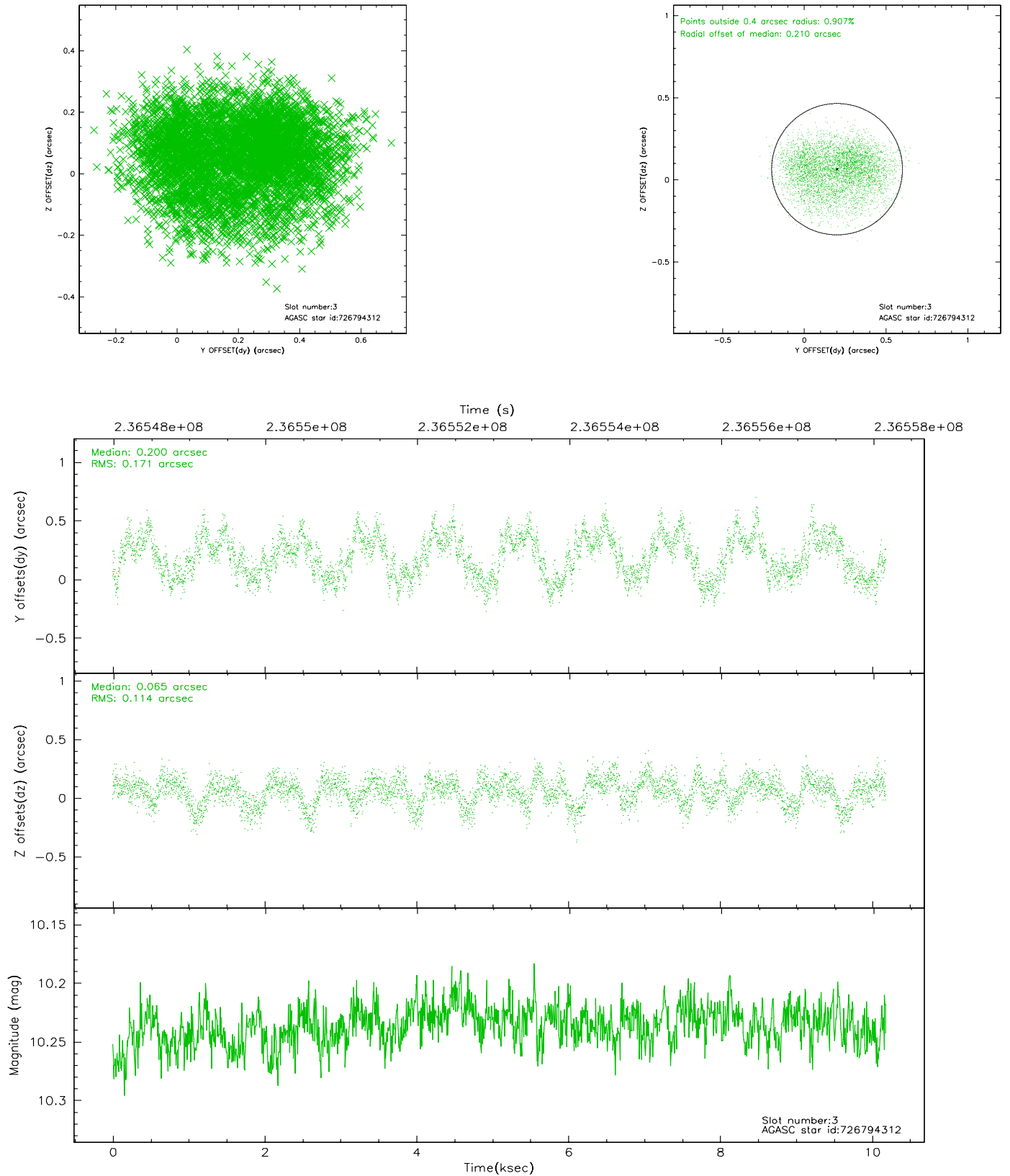


Slot Statistics

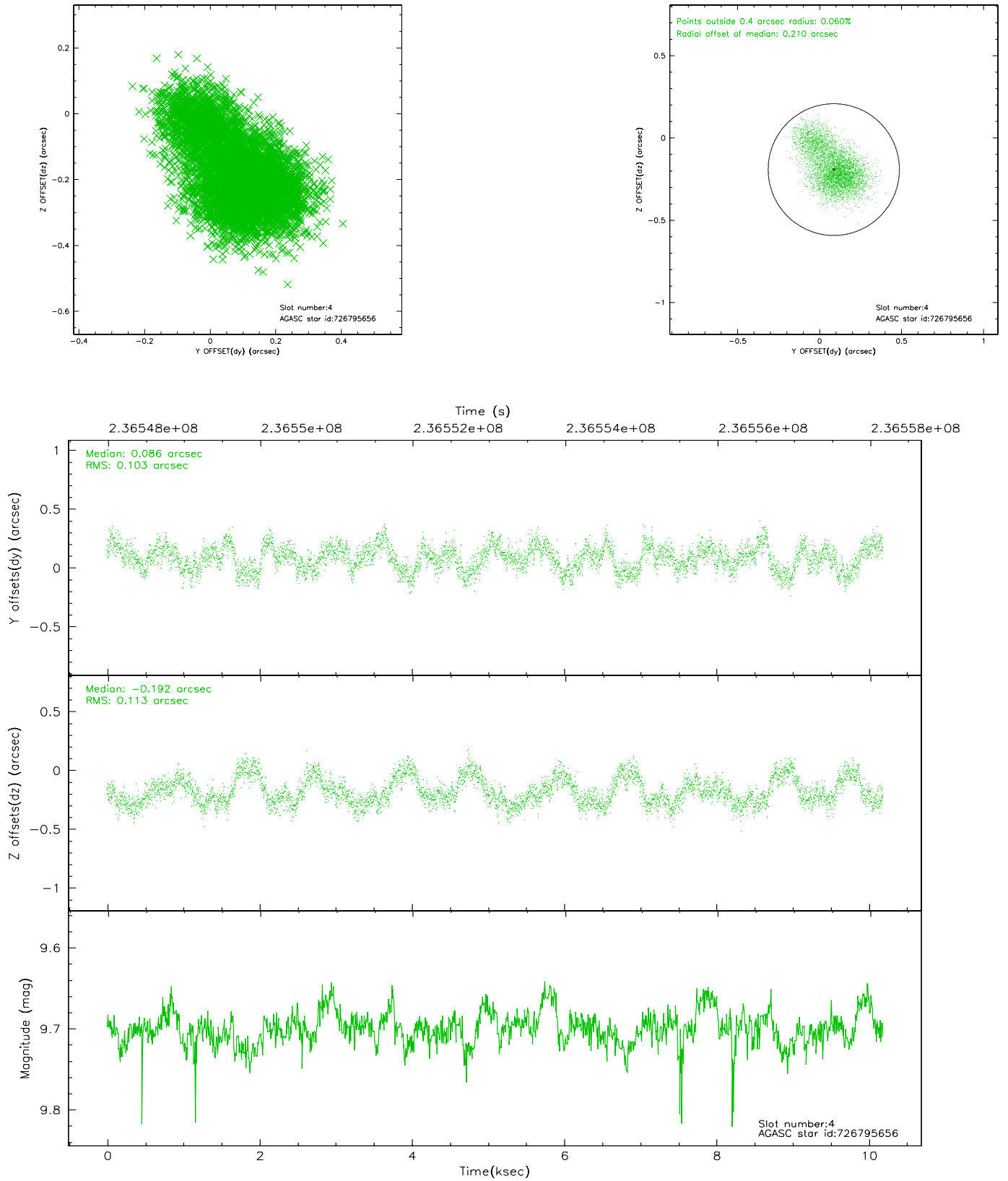
slot	status	id	mag	n_pts	med_dy	med_dz	dr1	dr2	ra	dec	mean_y	mean_z
0	FID	ACIS-S-2	7.10	2484	-0.047	-0.005	0.008	0.014	0.000000	0.000000	-759.95	-1731.54
1	FID	ACIS-S-4	7.21	2484	0.069	0.024	0.006	0.013	0.000000	0.000000	2153.16	176.51
2	FID	ACIS-S-5	7.23	2485	-0.053	-0.010	0.008	0.014	0.000000	0.000000	-1812.18	170.64
3	GUIDE	726794312	10.24	4963	0.200	0.065	0.226	0.339	203.365400	-8.963648	1716.66	2225.94
4	GUIDE	726795656	9.70	4961	0.086	-0.192	0.163	0.272	202.576235	-8.591995	1516.90	-877.70
5	GUIDE	726796160	10.26	4941	-0.111	0.064	0.182	0.305	203.337231	-8.169596	-901.62	1073.89
6	GUIDE	726796976	9.92	4969	-0.181	-0.119	0.145	0.229	203.076886	-8.047529	-966.34	49.45
7	GUIDE	726797168	9.21	4959	0.013	0.176	0.086	0.141	202.692279	-8.774007	1970.82	-250.66

2.4 Star Slots

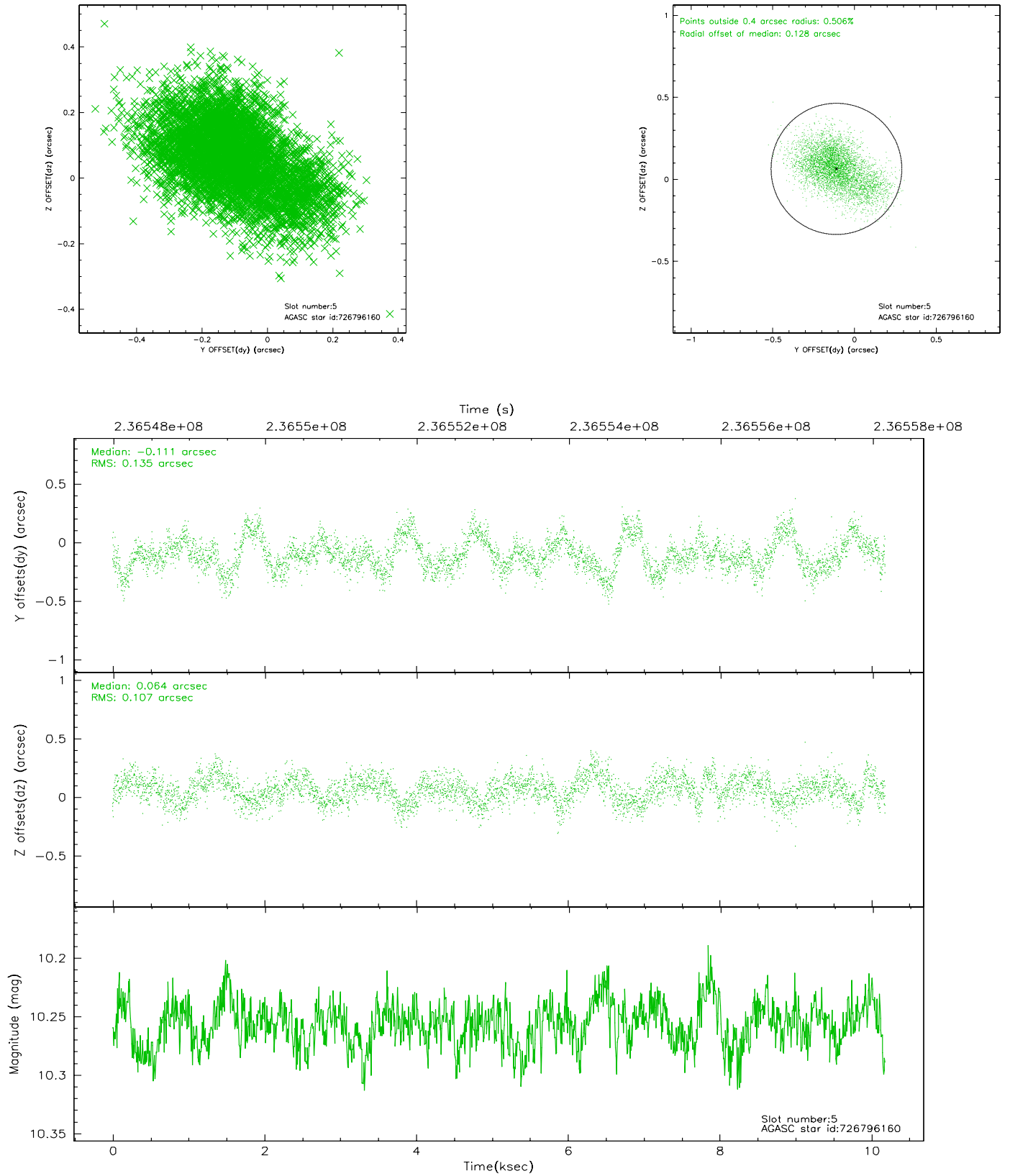
2.4.1 Slot 3



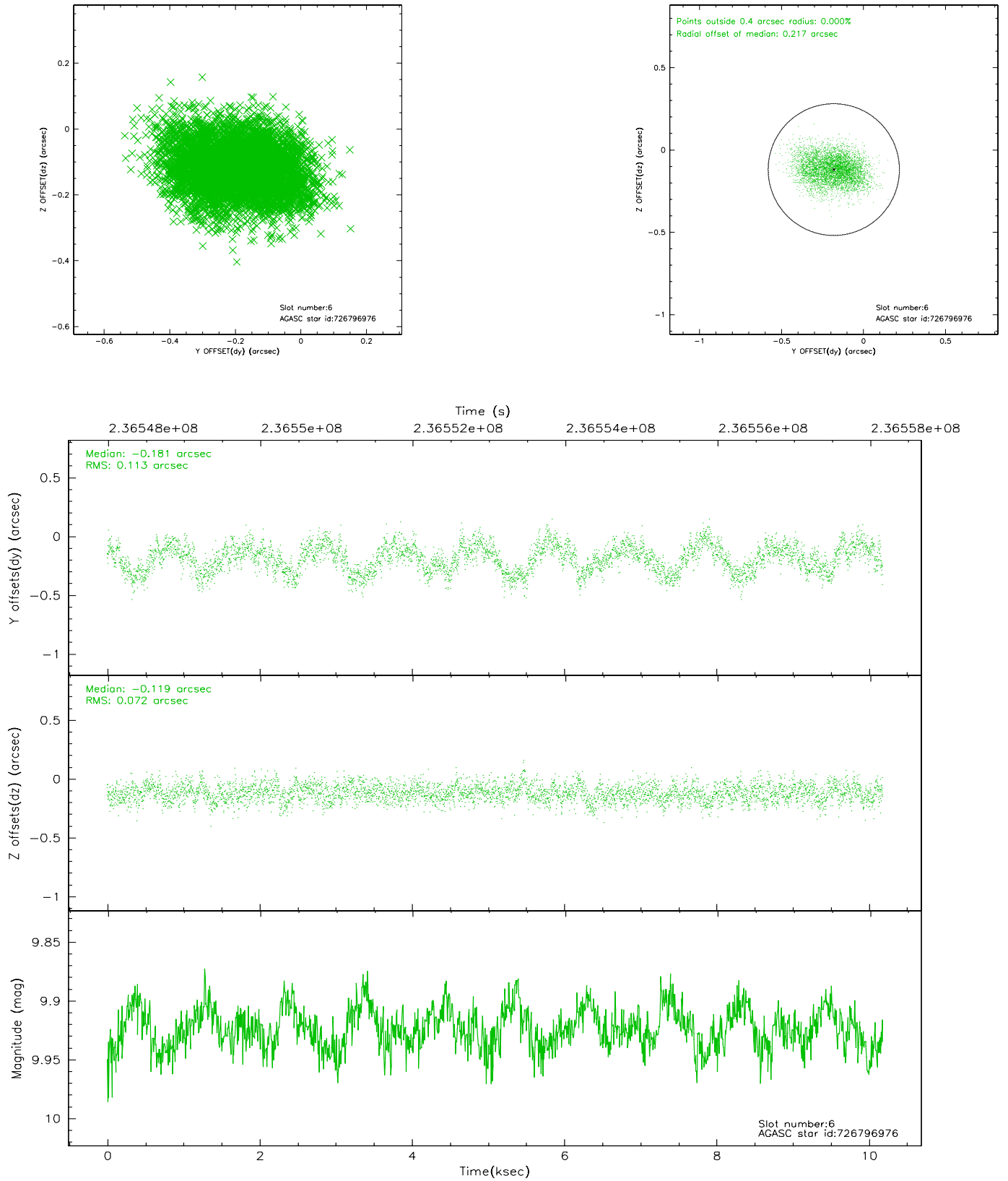
2.4.2 Slot 4



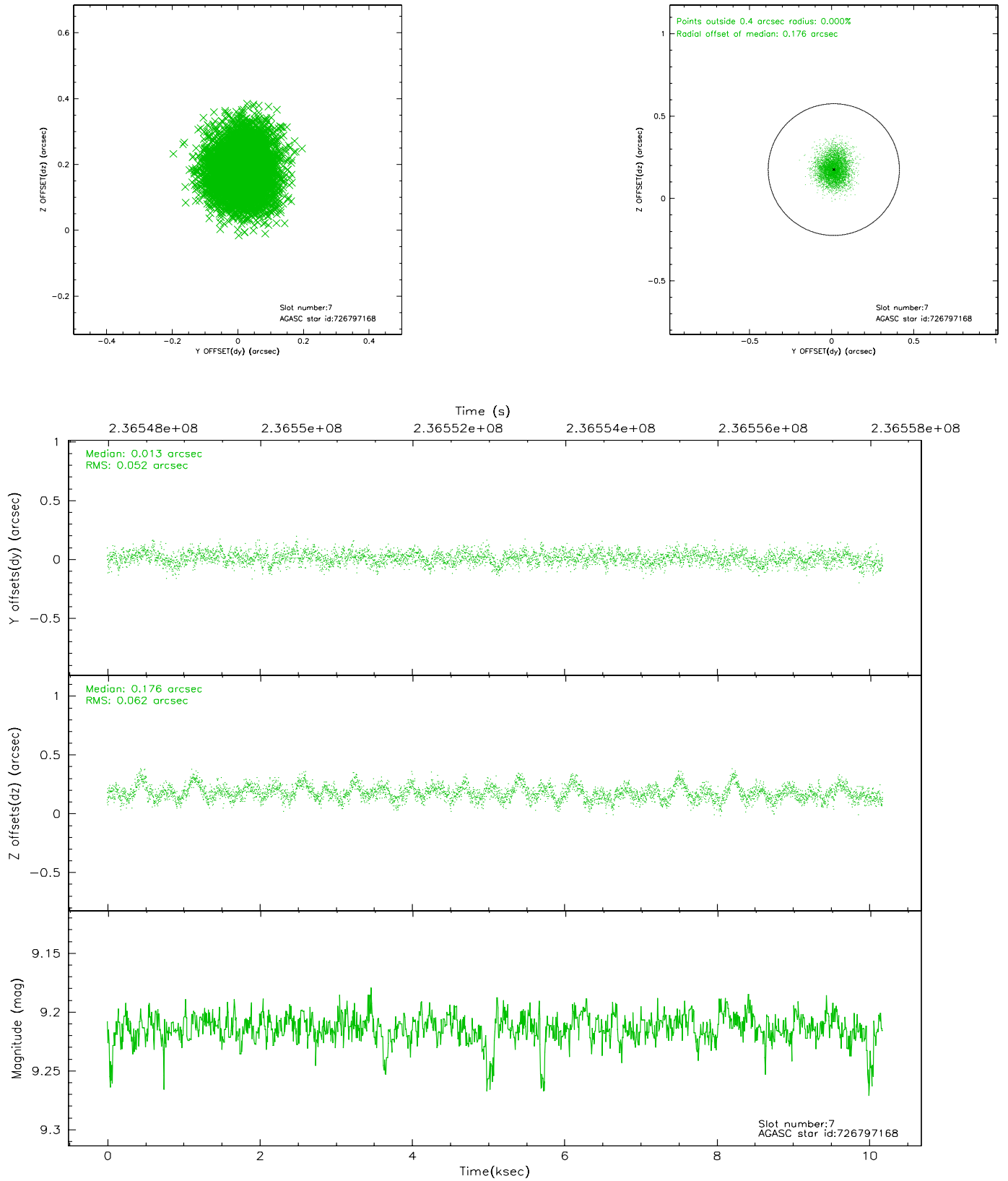
2.4.3 Slot 5



2.4.4 Slot 6

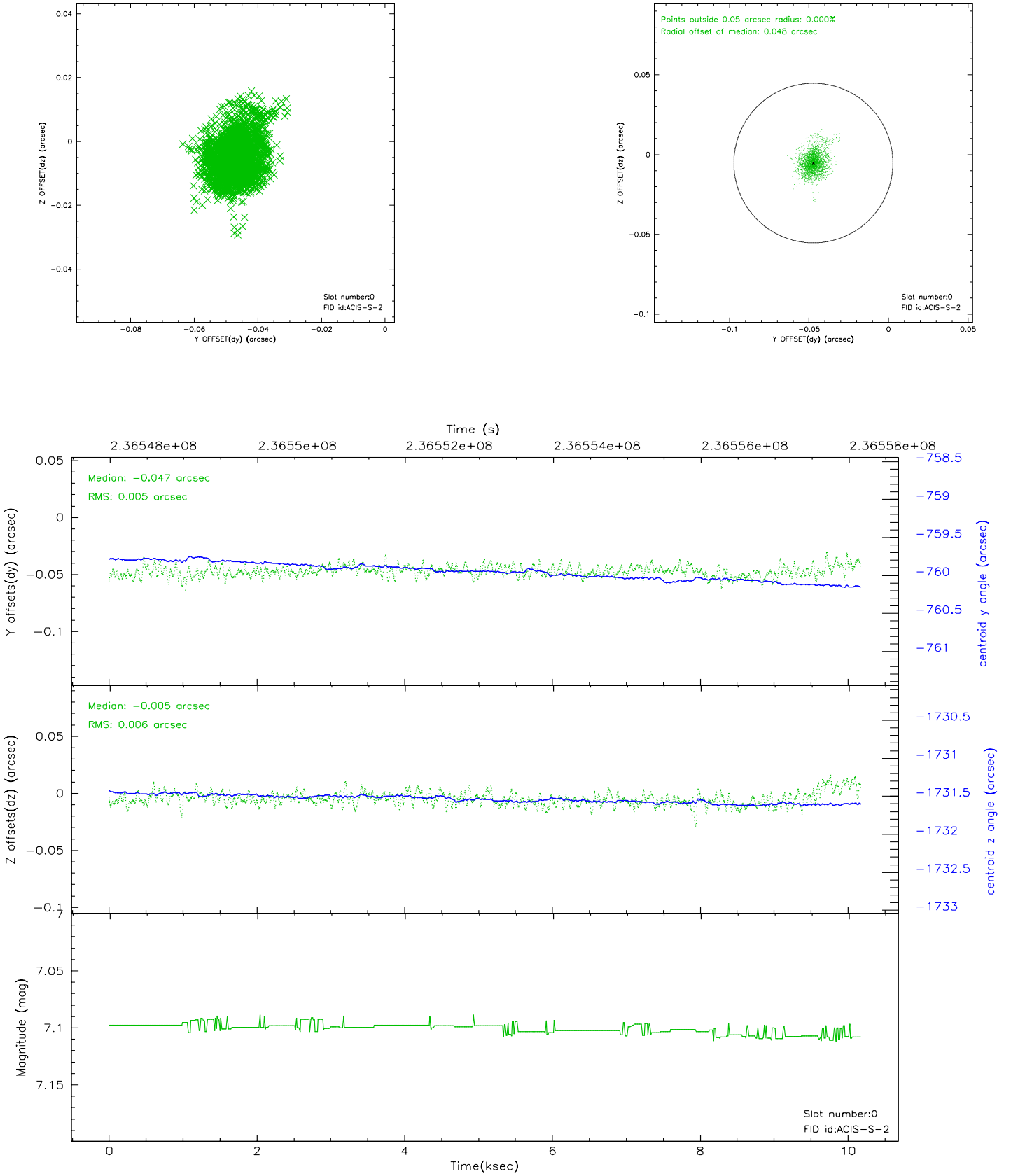


2.4.5 Slot 7

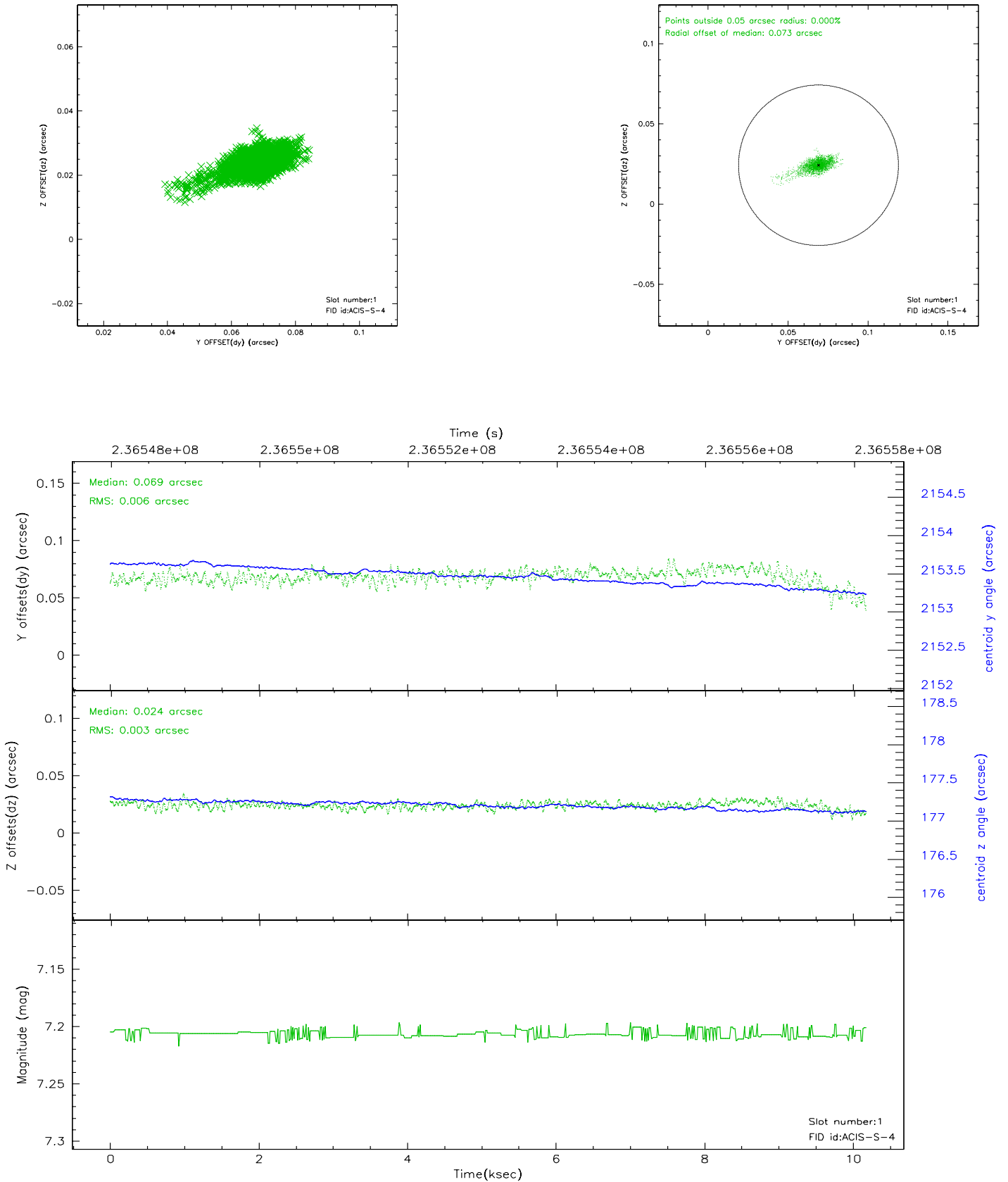


2.5 FID Slots

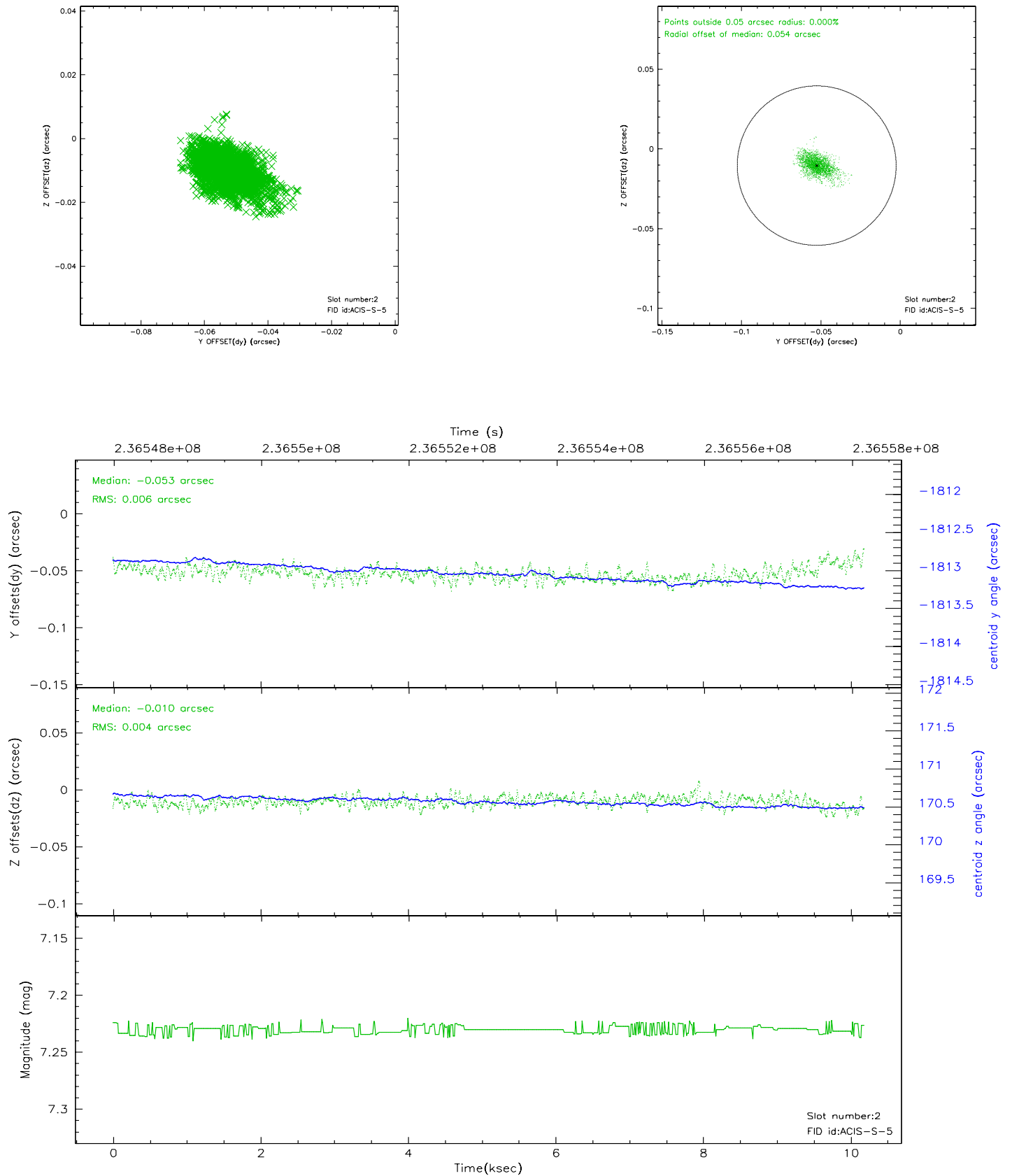
2.5.1 Slot 0



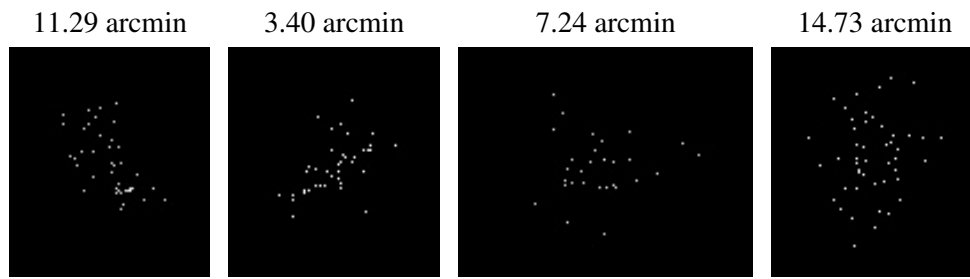
2.5.2 Slot 1



2.5.3 Slot 2



3 Point Sources



A Summary

A.1 Status

V&V Scientist	Beth Sundheim
V&V Date (YYYY-MM-DD)	2006.03.13
V&V Edition	1
V&V Disposition and Status	OK
V&V Charge Time	10.18239

A.2 Comments