

V&V Reference Report

L2 ASCDS Version : 8.5.1.1

Observation 5369 - L2 Version 3
Chandra X-Ray Center

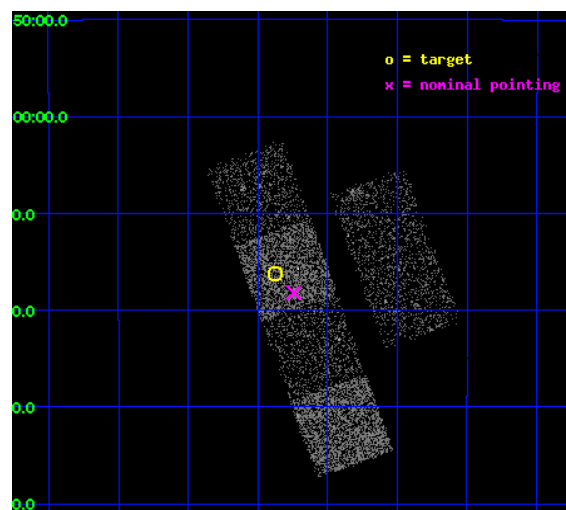
L2 Processing Date : Dec 25 2012

Contents

1	Front	2
2	OBI	3
2.1	OBI	3
2.1.1	Images	3
2.1.2	Bias	3
2.1.3	Parameters	4
2.1.4	Events	4
2.2	Compared Parameters	5
2.3	Aspect	6
2.4	Star Slots	9
2.4.1	Slot 3	9
2.4.2	Slot 4	10
2.4.3	Slot 5	11
2.4.4	Slot 6	12
2.4.5	Slot 7	13
2.5	FID Slots	14
2.5.1	Slot 0	14
2.5.2	Slot 1	15
2.5.3	Slot 2	16
A	Summary	17
A.1	Status	17
A.2	Comments	17

1 Front

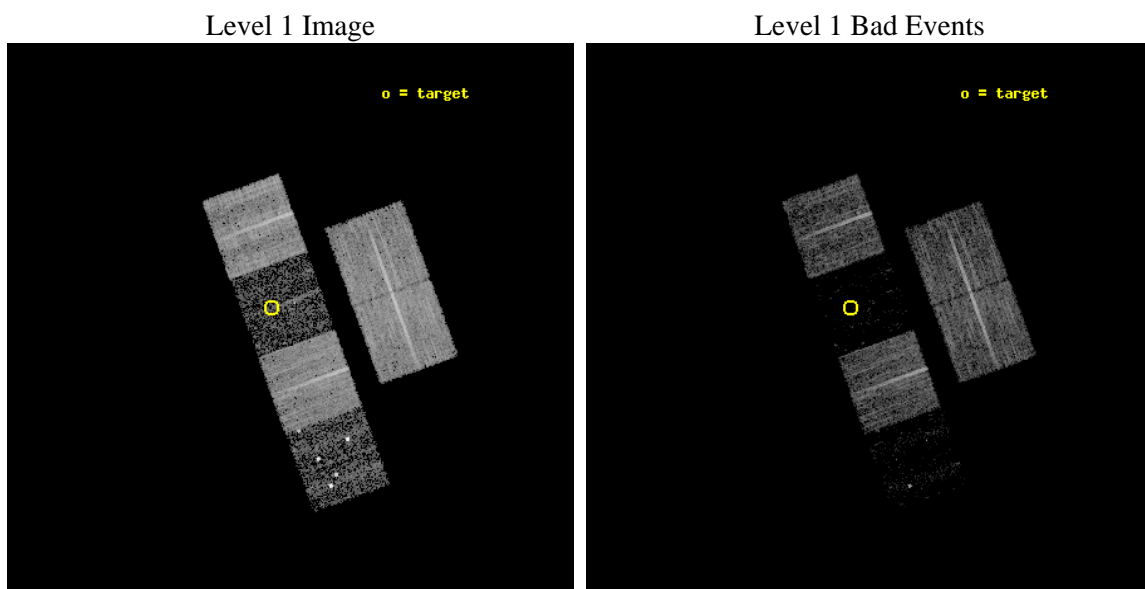
seq_num	100057	Sequence number
obs_id	5369	Observation id
title	Comet 9P/Tempel 1 During the Deep Impact Encounter	Proposal title
observer	Dr. Carey Lisse	Principal investigator
object	9P/Tempel 1	Source name
dtcycle	0	
cycle	P	events from which exps? Prim/Second/Both
ra_targ	209.09316	Observer's specified target RA [deg]
dec_targ	-13.269715	Observer's specified target Dec [deg]
ra_nom	209.06036232055	Nominal RA [deg]
dec_nom	-13.303748195045	Nominal Dec [deg]
roll_nom	250.05888312259	Nominal Roll [deg]
revision	3	Processing version of data
ontime	8287.2699272633	Sum of GTIs [s]
livetime	8182.3315254494	Livetime [s]
ontime2	8287.3109672666	Sum of GTIs [s]
ontime3	8287.1468072534	Sum of GTIs [s]
ontime5	8287.22888726	Sum of GTIs [s]
ontime6	8287.1878472567	Sum of GTIs [s]
ontime7	8287.2699272633	Sum of GTIs [s]
ontime8	8287.1057672799	Sum of GTIs [s]
l2events	11003	Number of level 2 events



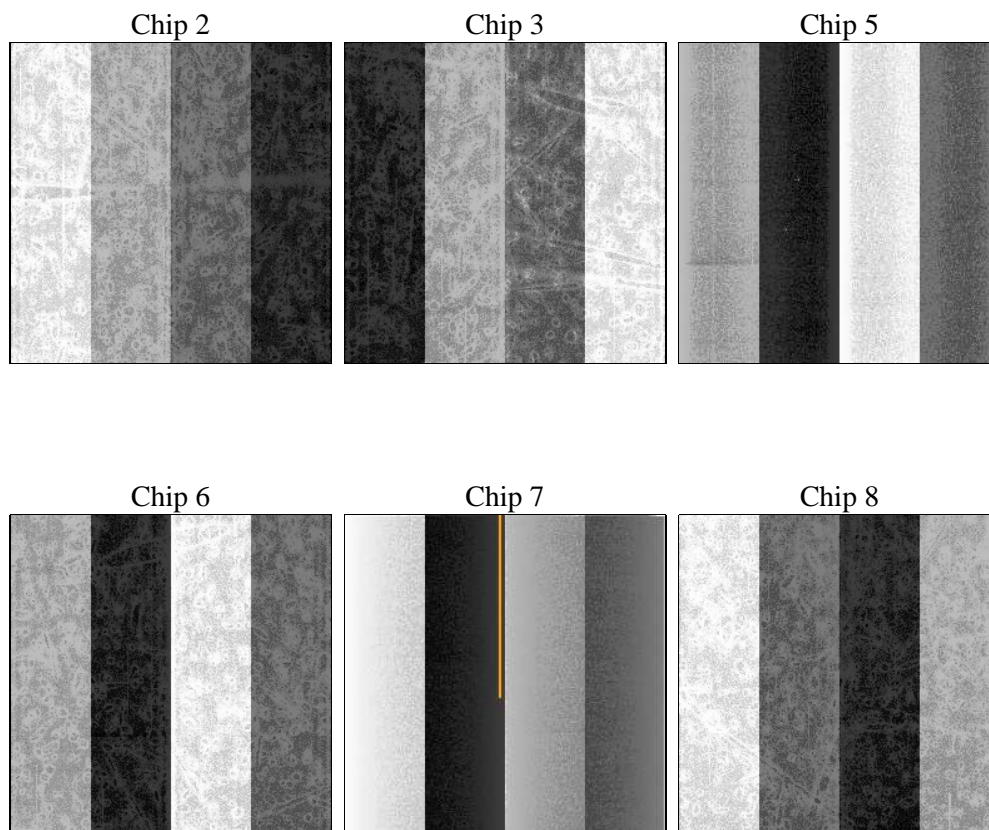
2 OBI

2.1 OBI

2.1.1 Images



2.1.2 Bias



2.1.3 Parameters

obi_num	1	Obi number	sched_exp_time	8325.000000	[s] Scheduled observation exposure time
ascdsver	8.5.1.1	Processing system revision	ontime	8287.2699272633	Sum of GTIs [s]
caldsver	4.5.5	 	ontime2	8287.3109672666	Sum of GTIs [s]
date	2012-12-26T00:08:35	Date and time of file creation	ontime3	8287.1468072534	Sum of GTIs [s]
revision	3	Processing version of data	ontime5	8287.22888726	Sum of GTIs [s]
			ontime6	8287.1878472567	Sum of GTIs [s]
			ontime7	8287.2699272633	Sum of GTIs [s]
			ontime8	8287.1057672799	Sum of GTIs [s]
			l1events	165626	Number of level 1 events

2.1.4 Events

	ccd 2	ccd 3	ccd 5	ccd 6	ccd 7	ccd 8
level 1 events	39323	33966	12620	34612	4774	40331
rejected events	37625	32706	2144	33062	1002	30105
rejected %	95%	96%	16%	95%	20%	74%

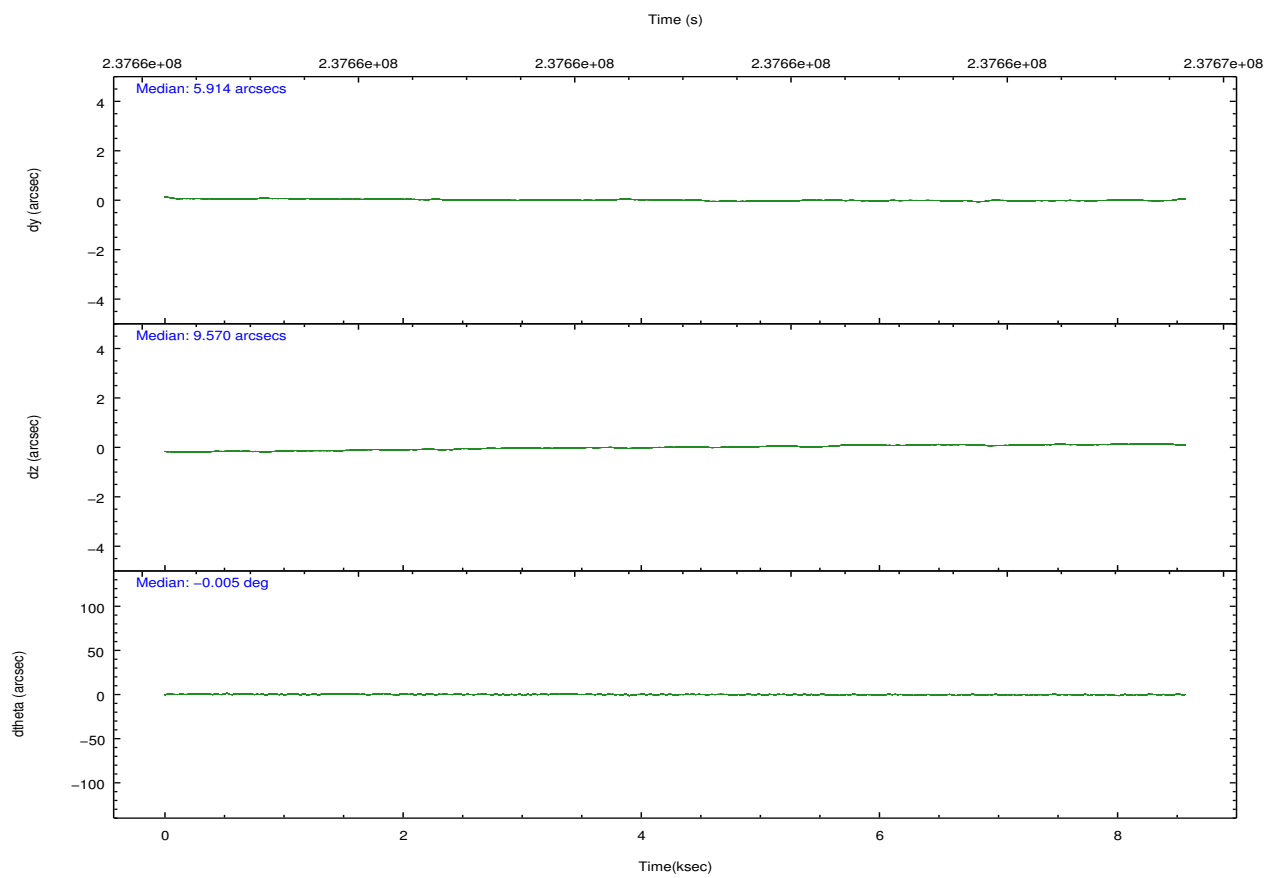
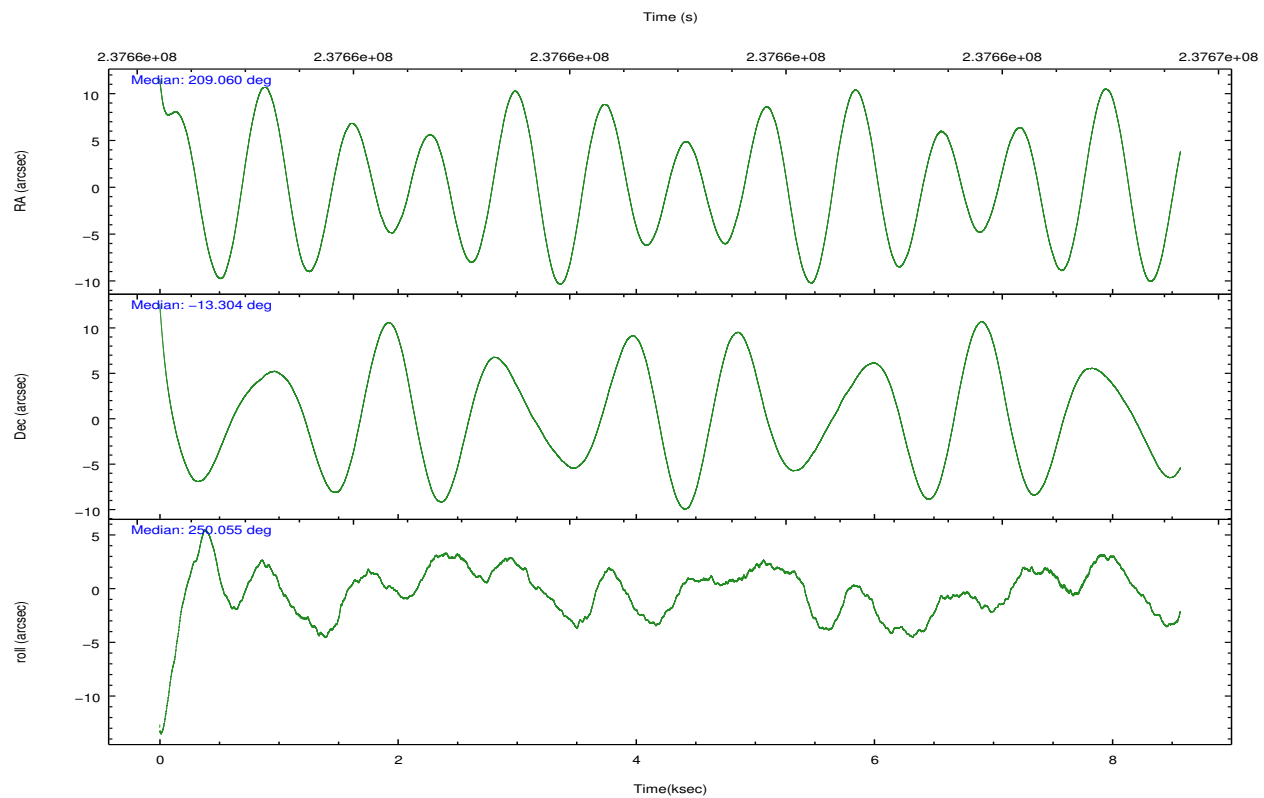
	ccd 2	ccd 3	ccd 5	ccd 6	ccd 7	ccd 8
grade 0 events	728	616	5800	771	1091	2911
	1%	1%	45%	2%	22%	7%
grade 1 events	5	7	299	5	23	19
	0%	0%	2%	0%	0%	0%
grade 2 events	378	156	3140	261	1158	2300
	0%	0%	24%	0%	24%	5%
grade 3 events	211	210	602	235	556	1194
	0%	0%	4%	0%	11%	2%
grade 4 events	249	179	585	213	543	1127
	0%	0%	4%	0%	11%	2%
grade 5 events	33	34	367	19	120	225
	0%	0%	2%	0%	2%	0%
grade 6 events	167	120	490	99	492	2805
	0%	0%	3%	0%	10%	6%
grade 7 events	37552	32644	1337	33009	791	29750
	95%	96%	10%	95%	16%	73%

2.2 Compared Parameters

Parameter	Planned	Actual
Instrument	ACIS	ACIS
Detector	ACIS-235678	ACIS-235678
Grating	NONE	NONE
Data mode	VFAINT	VFAINT
Observation mode	POINTING	POINTING
[deg] Pointing RA	209.055101	209.0603623205473
[deg] Pointing Dec	-13.276940	-13.30374819504487
[deg] Pointing Roll	249.901052	250.0588831225947
[s] Window start time (MET)	237708064.184000	237708064.184000
[s] Window stop time (MET)	237751264.184000	237751264.184000
[mm] SIM focus pos	-0.684267	-0.6828225247311905
[mm] SIM defocus	0	0.001444936568705701
[mm] SIM translation stage pos	-190.132523	-190.1400660498719
[mm] SIM translation stage offset	0	0.00754346686406393
[s] Observation start time (MET)	237656885.184000	237655890.20944
Observation start date	2005-07-13T15:47:01	2005-07-13T15:31:30
[s] Observation end time (MET)	237665210.184000	237665343.78487
Observation end date	2005-07-13T18:05:46	2005-07-13T18:09:03
Read mode	TIMED	TIMED

Parameter	Planned	Actual
Obspar format version number	7	7
Obspar file type	PREDICTED	ACTUAL
Obspar update status	NONE	UPDATED
Number of optional ACIS chips dropped	0	0
On-chip summing requested	N	N
Subarray requested	NONE	NONE
Alternating exposures requested	N	N
[s] Primary exposure time	0.000000	3.2

2.3 Aspect

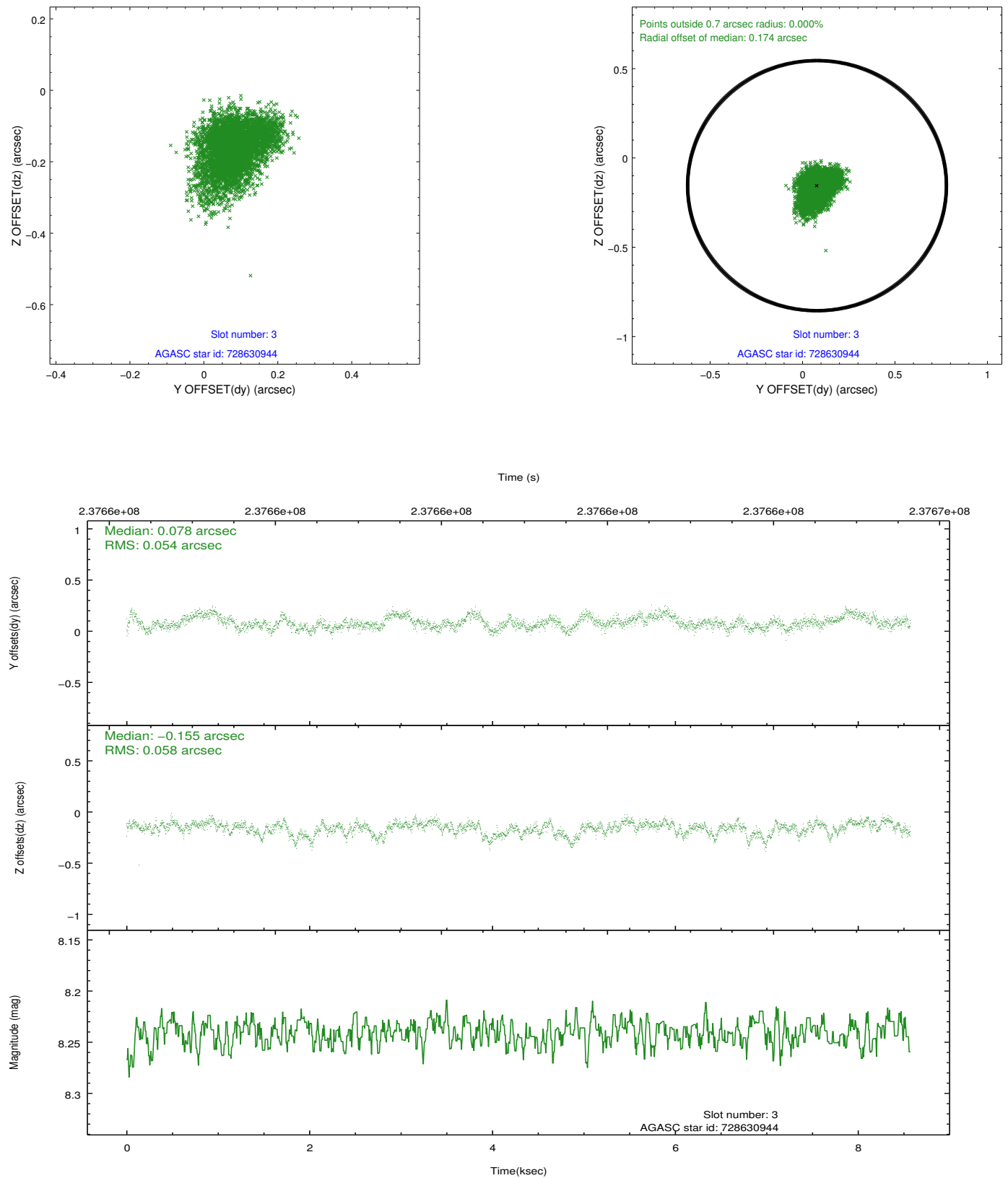


Slot Statistics

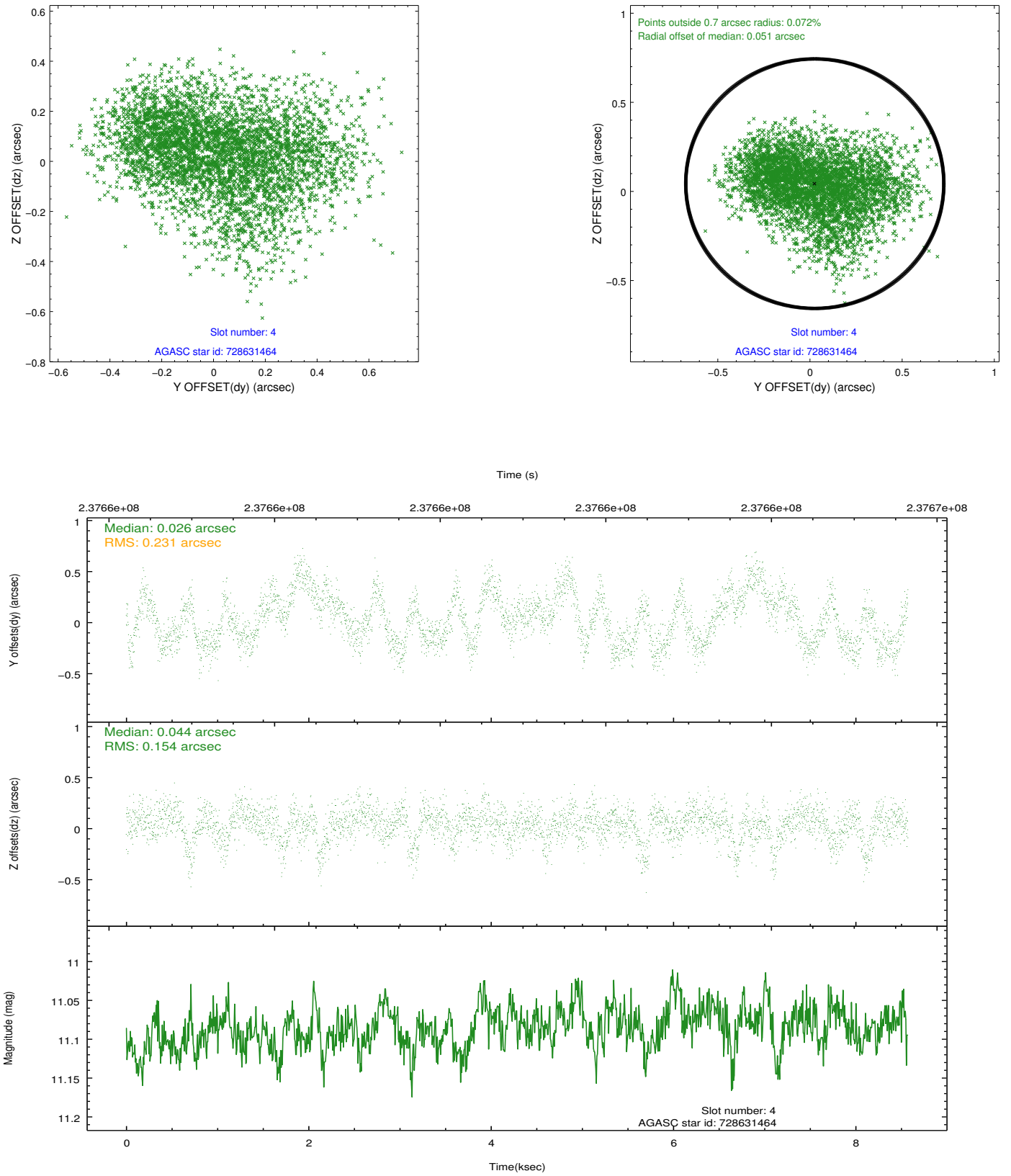
slot	status	id	mag	n_pts	med_dy	med_dz	dr1	dr2	ra	dec	mean_y	mean_z
0	FID	ACIS-S-2	7.10	2091	-0.066	-0.038	0.007	0.012	0.000000	0.000000	-758.69	-1730.85
1	FID	ACIS-S-4	7.21	2091	0.108	0.042	0.008	0.015	0.000000	0.000000	2154.45	177.08
2	FID	ACIS-S-5	7.23	2091	-0.074	0.005	0.007	0.012	0.000000	0.000000	-1810.73	171.41
3	GUIDE	728630944	8.24	4182	0.078	-0.155	0.084	0.139	208.923207	-13.740319	1725.48	140.28
4	GUIDE	728631464	11.09	4180	0.026	0.044	0.305	0.471	208.876674	-12.686242	-1780.91	-1319.23
5	GUIDE	728638600	9.40	4180	-0.077	-0.082	0.104	0.167	209.320543	-13.467304	324.22	1108.00
6	GUIDE	728639032	9.16	4180	0.201	0.239	0.105	0.170	209.196450	-13.877558	1861.39	1207.66
7	GUIDE	728639792	9.83	4174	-0.231	-0.019	0.162	0.270	209.293230	-12.690895	-2267.98	60.62

2.4 Star Slots

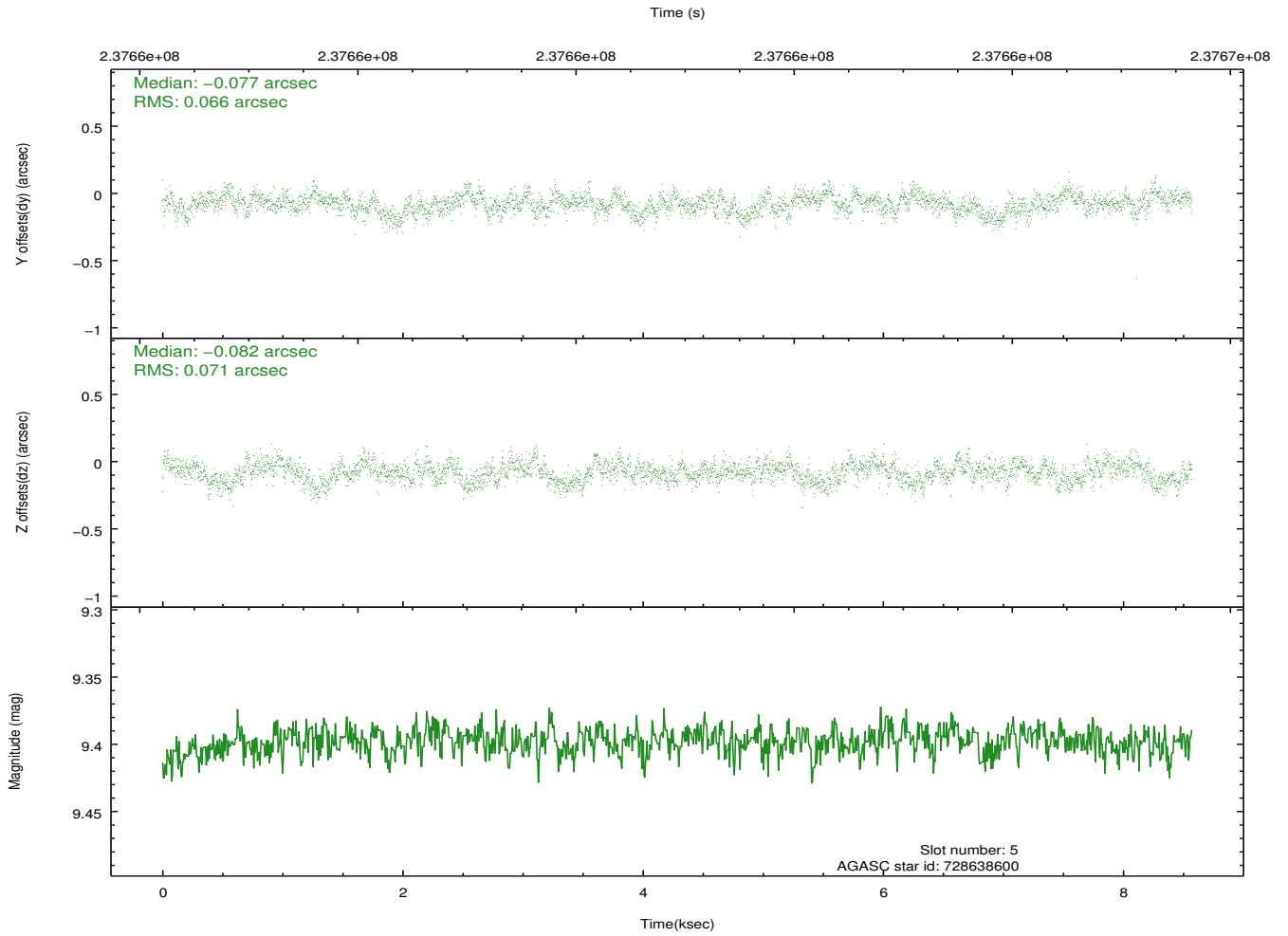
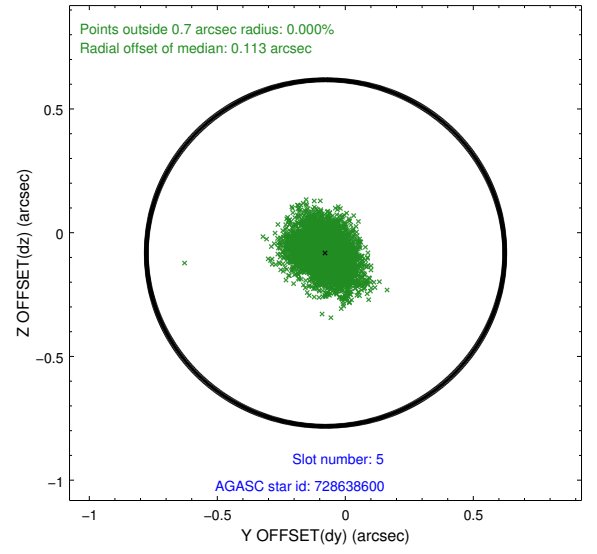
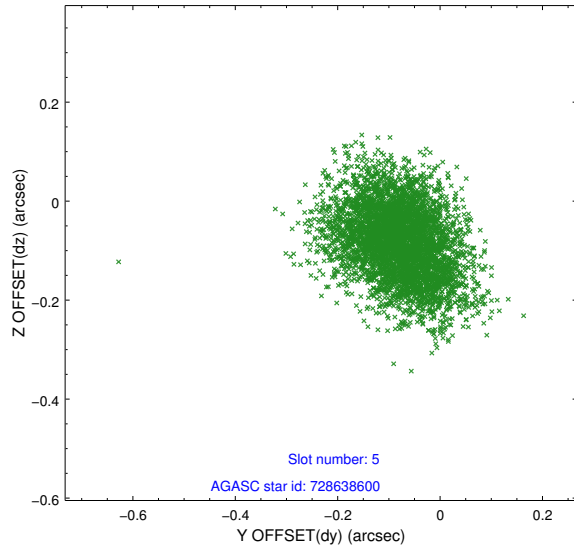
2.4.1 Slot 3



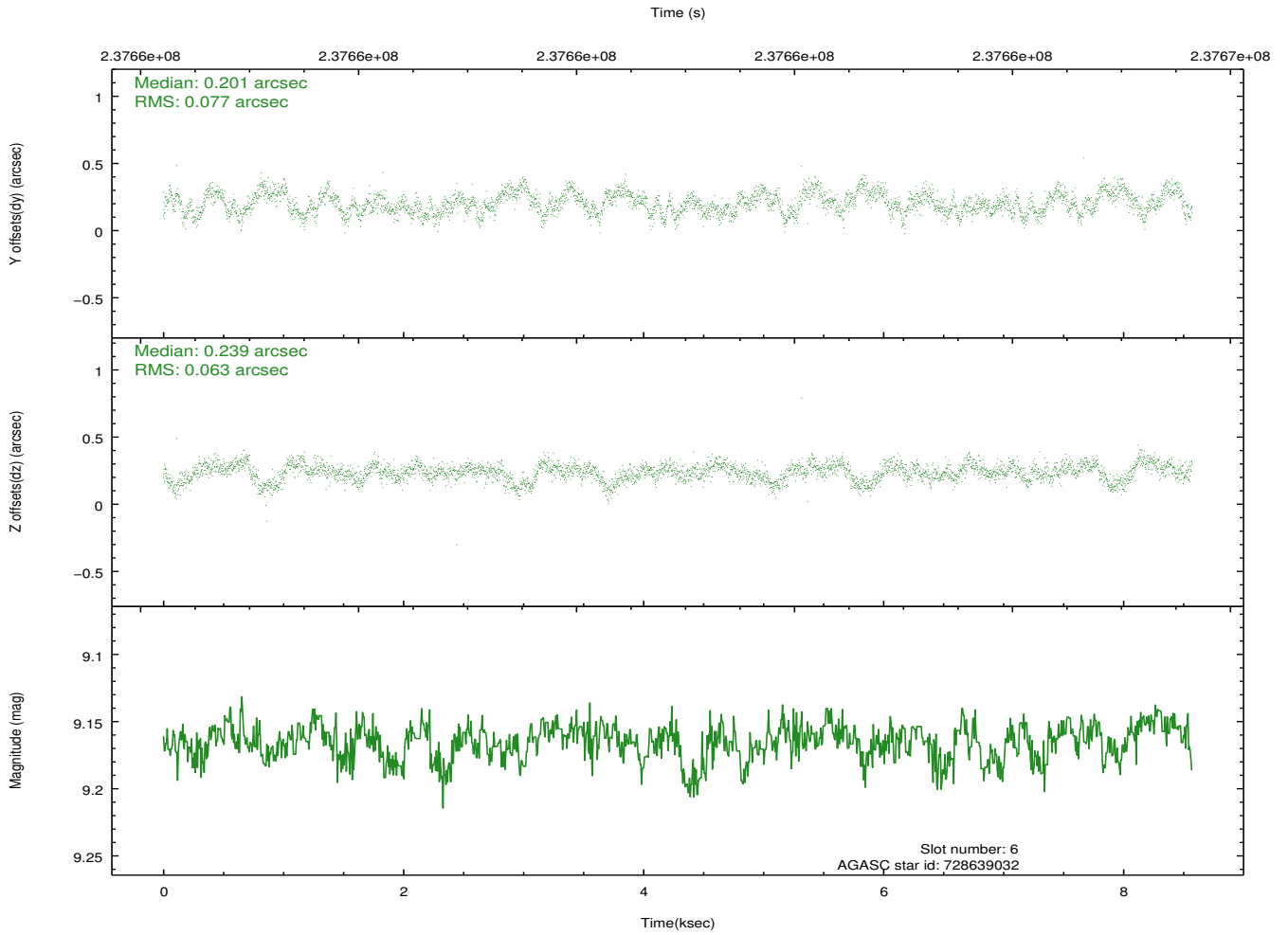
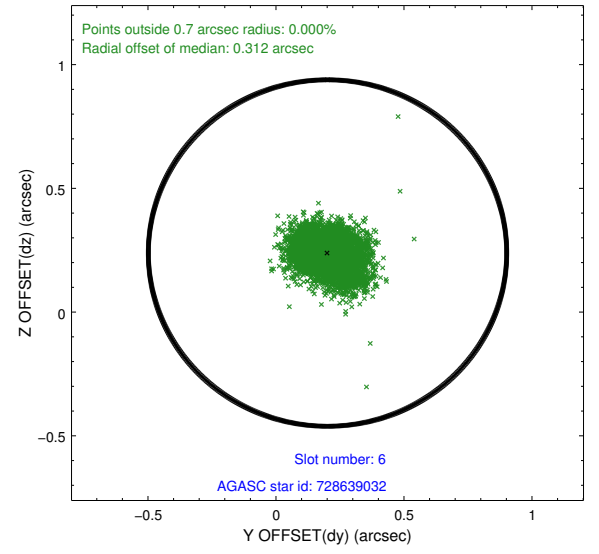
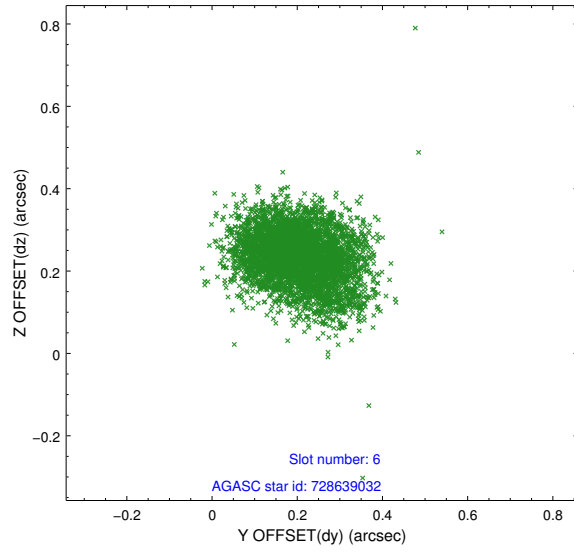
2.4.2 Slot 4



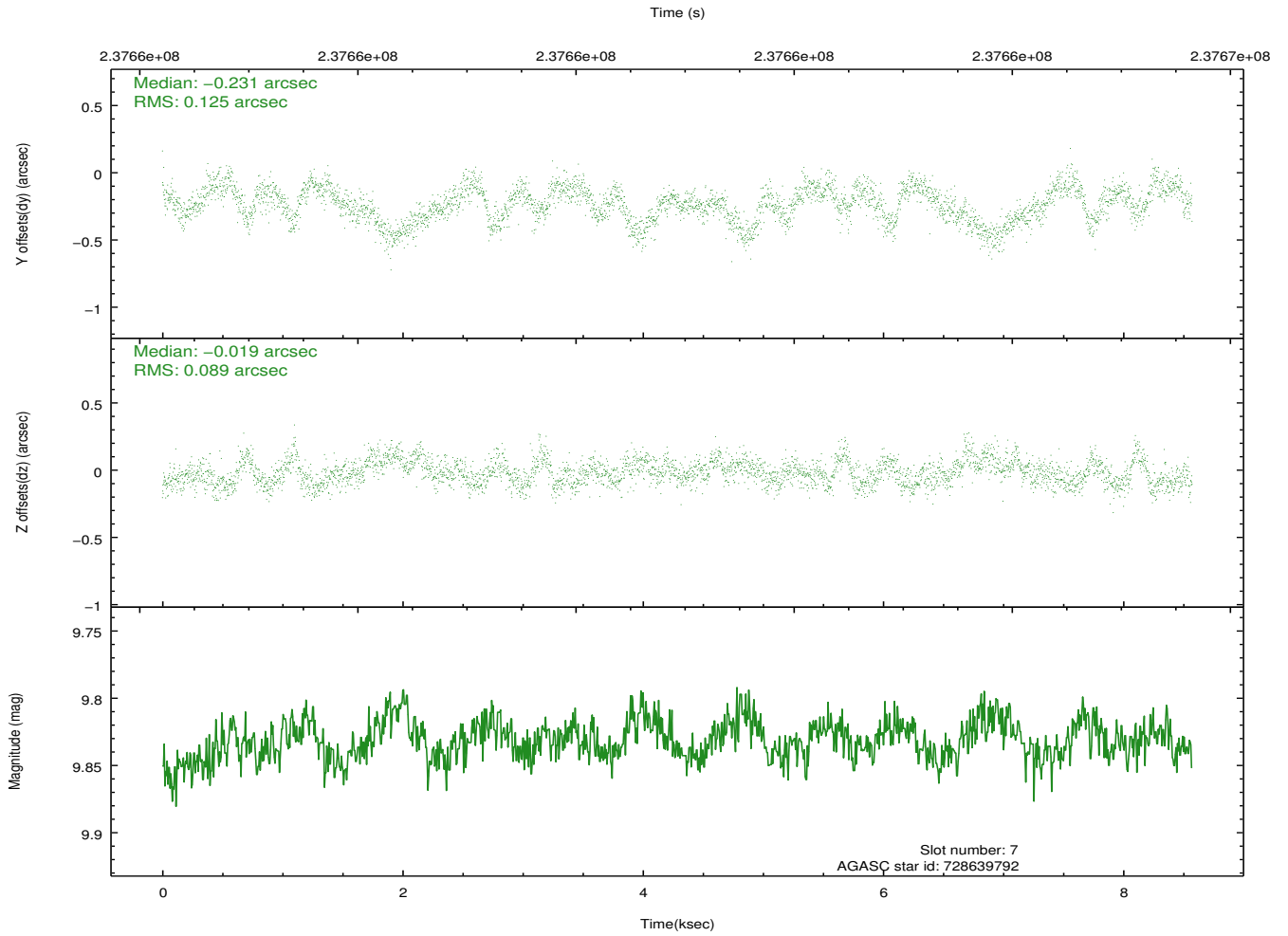
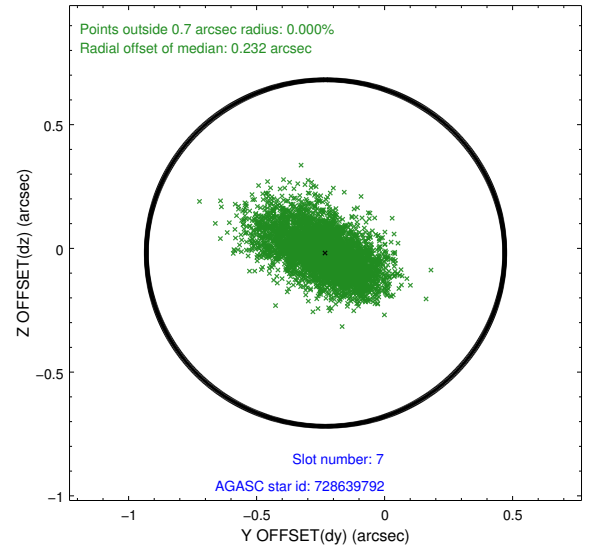
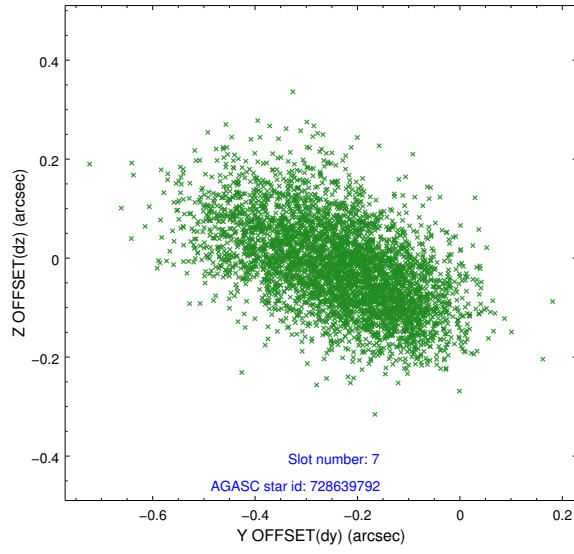
2.4.3 Slot 5



2.4.4 Slot 6

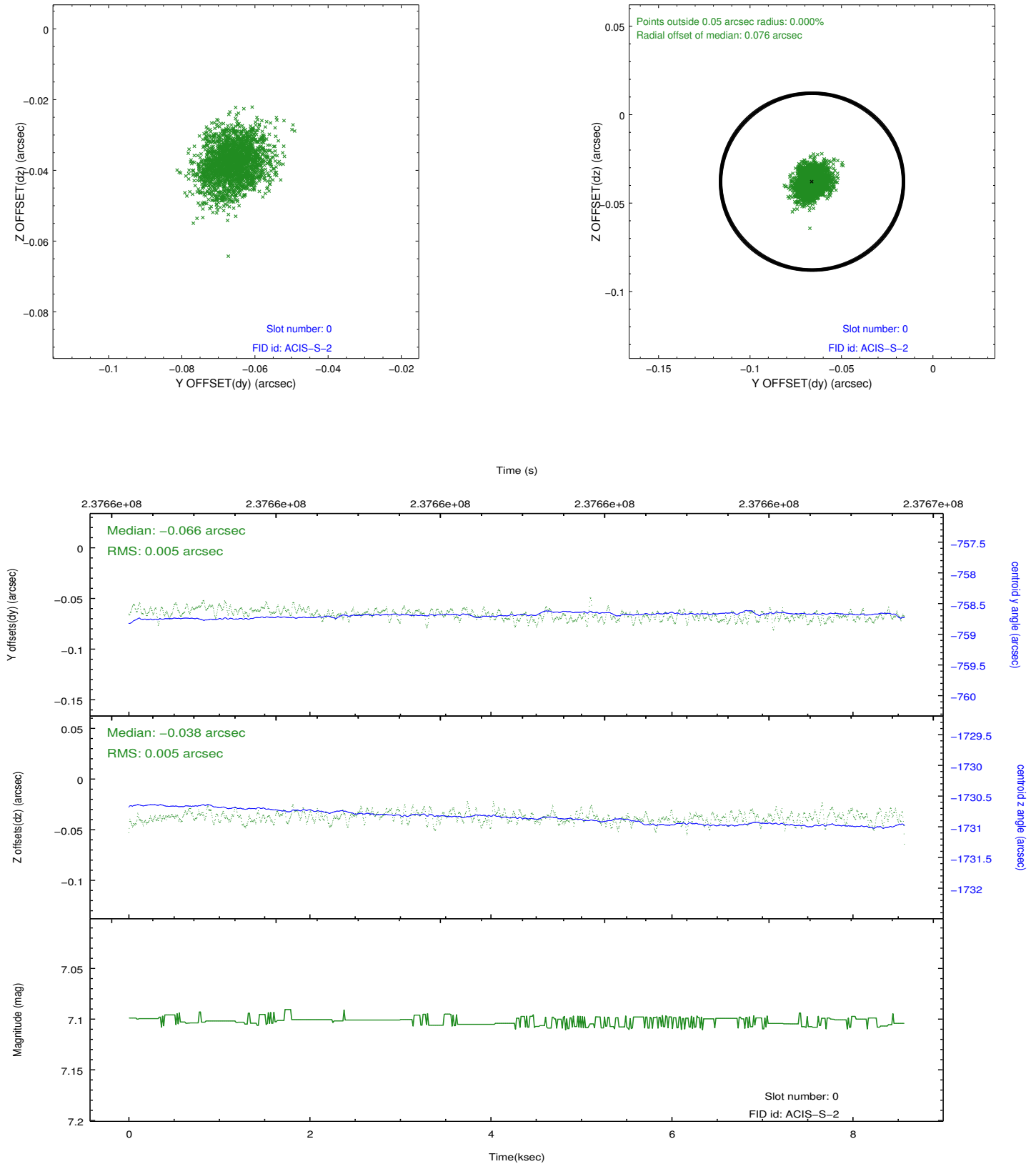


2.4.5 Slot 7

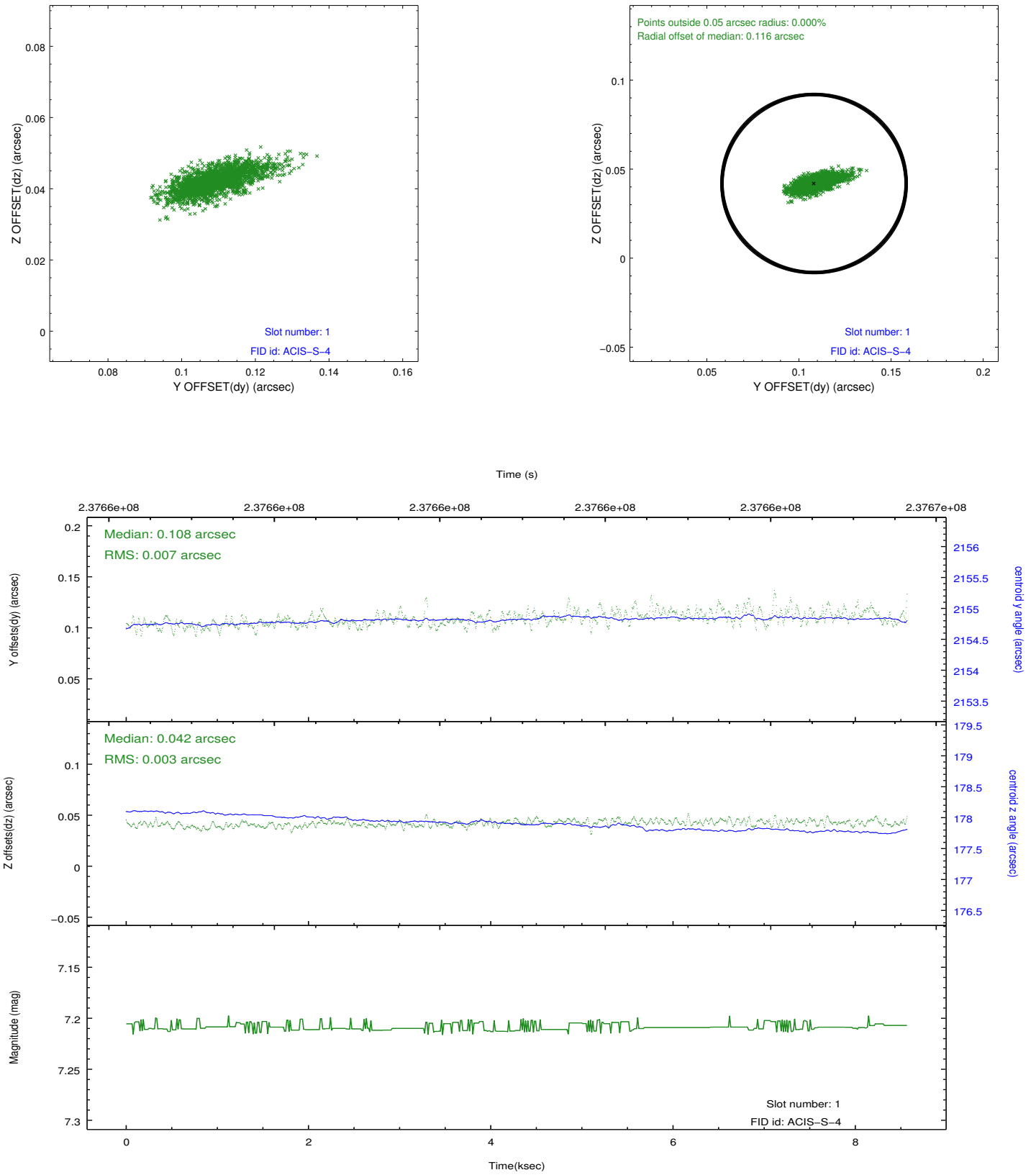


2.5 FID Slots

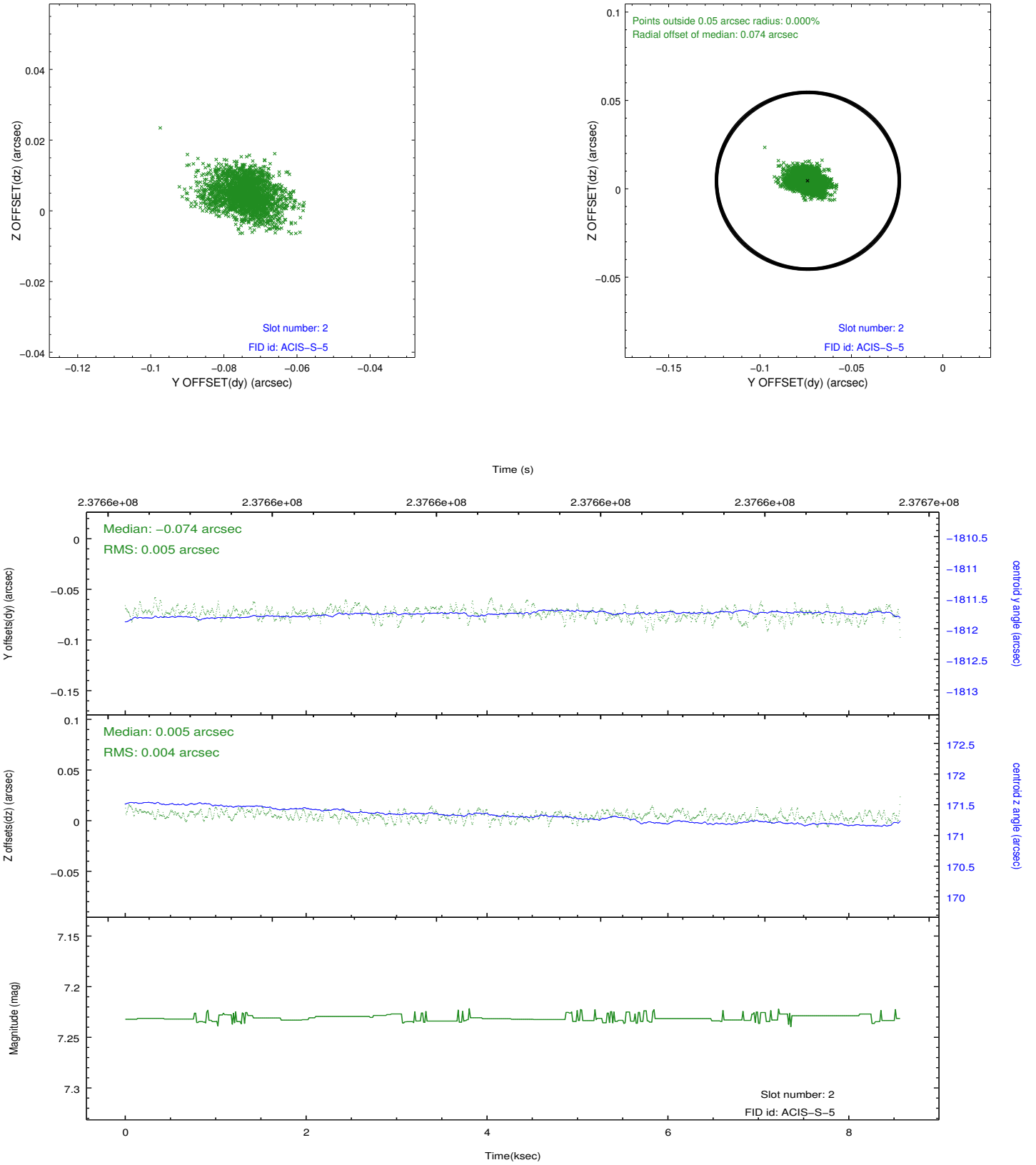
2.5.1 Slot 0



2.5.2 Slot 1



2.5.3 Slot 2



A Summary

A.1 Status

V&V Scientist	Beth Sundheim
V&V Date (YYYY-MM-DD)	2013.01.18
V&V Edition	1
V&V Disposition and Status	OK
V&V Charge Time	8.287999

A.2 Comments

Window preference was not met.