

# V&V Reference Report

## L2 ASCDS Version : 7.6.7.1

Observation 5367 - L2 Version 002  
Chandra X-Ray Center

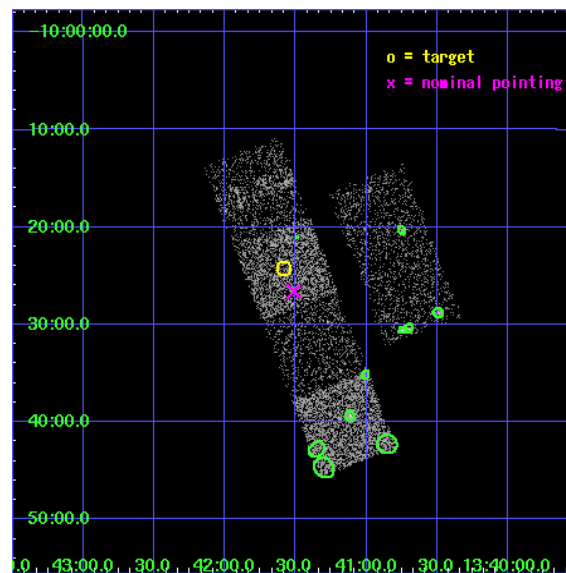
L2 Processing Date : Mar 14 2006

## Contents

<b>1</b>	<b>Front</b>	<b>2</b>
<b>2</b>	<b>OBI</b>	<b>3</b>
2.1	OBI . . . . .	3
2.1.1	Images . . . . .	3
2.1.2	Bias . . . . .	3
2.1.3	Parameters . . . . .	4
2.1.4	Events . . . . .	4
2.2	Compared Parameters . . . . .	5
2.3	Aspect . . . . .	6
2.4	Star Slots . . . . .	9
2.4.1	Slot 3 . . . . .	9
2.4.2	Slot 4 . . . . .	10
2.4.3	Slot 5 . . . . .	11
2.4.4	Slot 6 . . . . .	12
2.4.5	Slot 7 . . . . .	13
2.5	FID Slots . . . . .	14
2.5.1	Slot 0 . . . . .	14
2.5.2	Slot 1 . . . . .	15
2.5.3	Slot 2 . . . . .	16
<b>3</b>	<b>Point Sources</b>	<b>17</b>
<b>A</b>	<b>Summary</b>	<b>18</b>
A.1	Status . . . . .	18
A.2	Comments . . . . .	18

# 1 Front

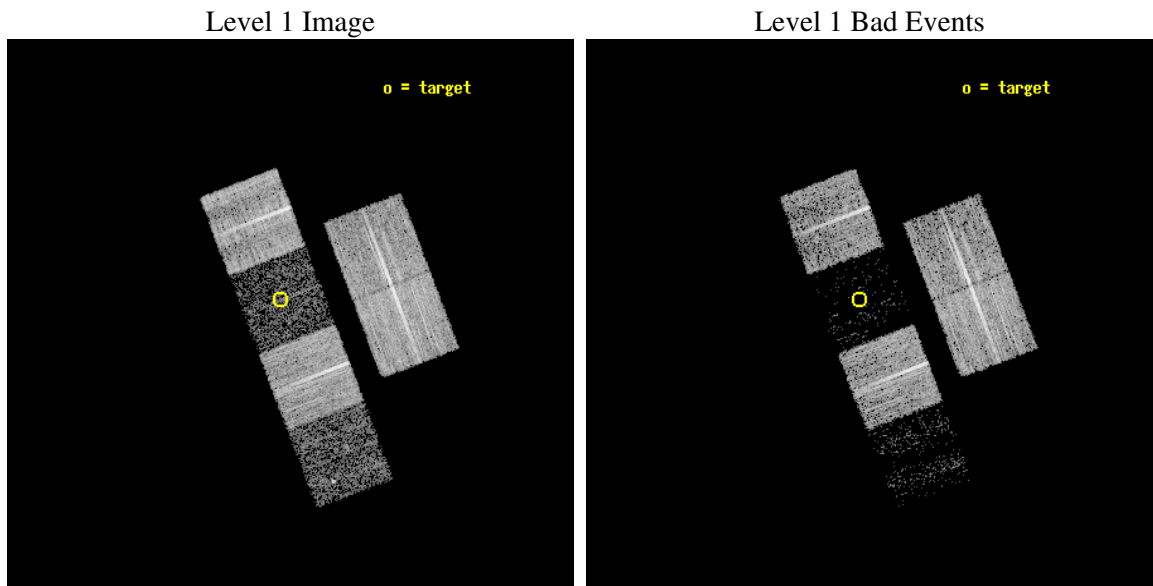
seq_num	100055
obs_id	5367
title	Comet 9P/Tempel 1 During the Deep Impact Encounter
observer	Dr. Carey Lisse
object	9P/Tempel 1
dtcycle	0
cycle	P
ra_targ	205.395389
dec_targ	-10.404287
ra_nom	205.37820049191
dec_nom	-10.443688443627
roll_nom	249.11012522299
revision	2
ontime	8083.1999698877
livetime	7980.8456247503
ontime2	8083.1999698877
ontime3	8083.1999698877
ontime5	8083.1999698877
ontime6	8083.1999698877
ontime7	8083.1999698877
ontime8	8083.1999698877
l2events	11660



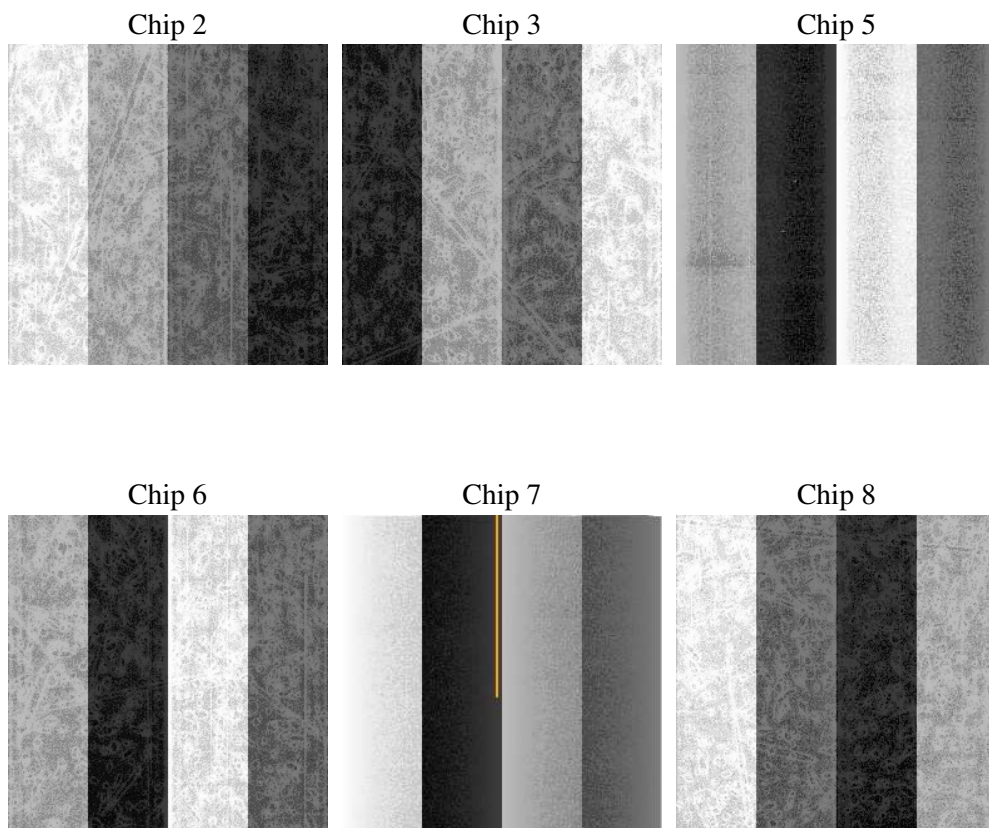
## 2 OBI

### 2.1 OBI

#### 2.1.1 Images



#### 2.1.2 Bias



### 2.1.3 Parameters

obi_num	0
ascdsver	7.6.7.1
caldsver	3.2.1
date	2006-03-14T09:31:58
revision	2

sched_exp_time	7900.000000
ontime	8274.2796984613
ontime2	8274.279718399
ontime3	8274.2796984613
ontime5	8274.279728353
ontime6	8274.279718399
ontime7	8274.2796984613
ontime8	8277.5207384825
l1events	168012

### 2.1.4 Events

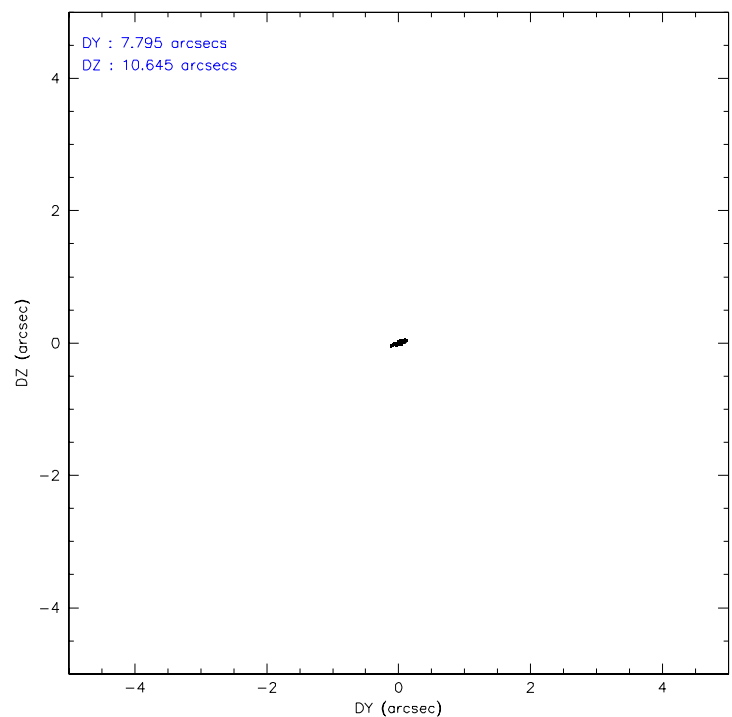
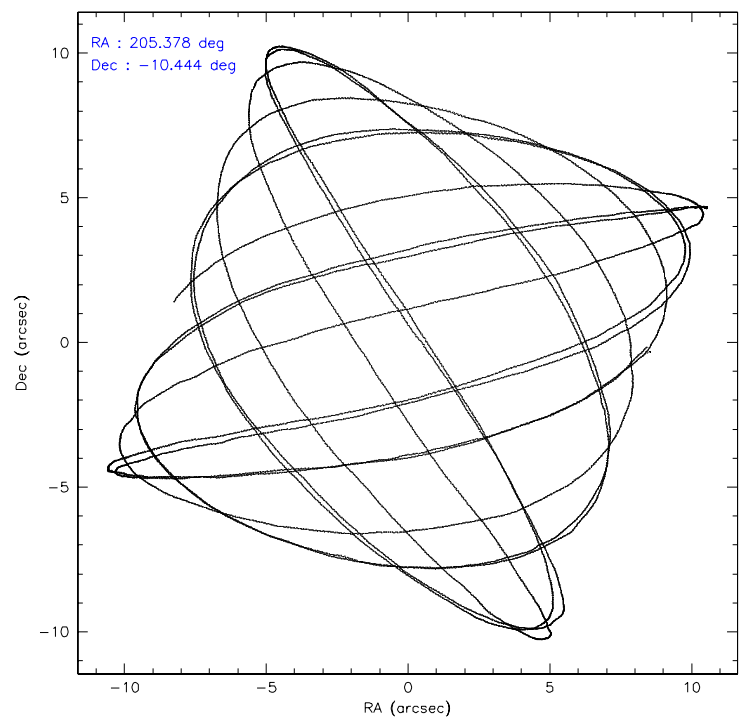
	ccd 2	ccd 3	ccd 5	ccd 6	ccd 7	ccd 8
level 1 events	43919	34962	6610	37322	4856	40343
rejected events	42080	33753	2199	35790	1146	29642
rejected %	95%	96%	33%	95%	23%	73%

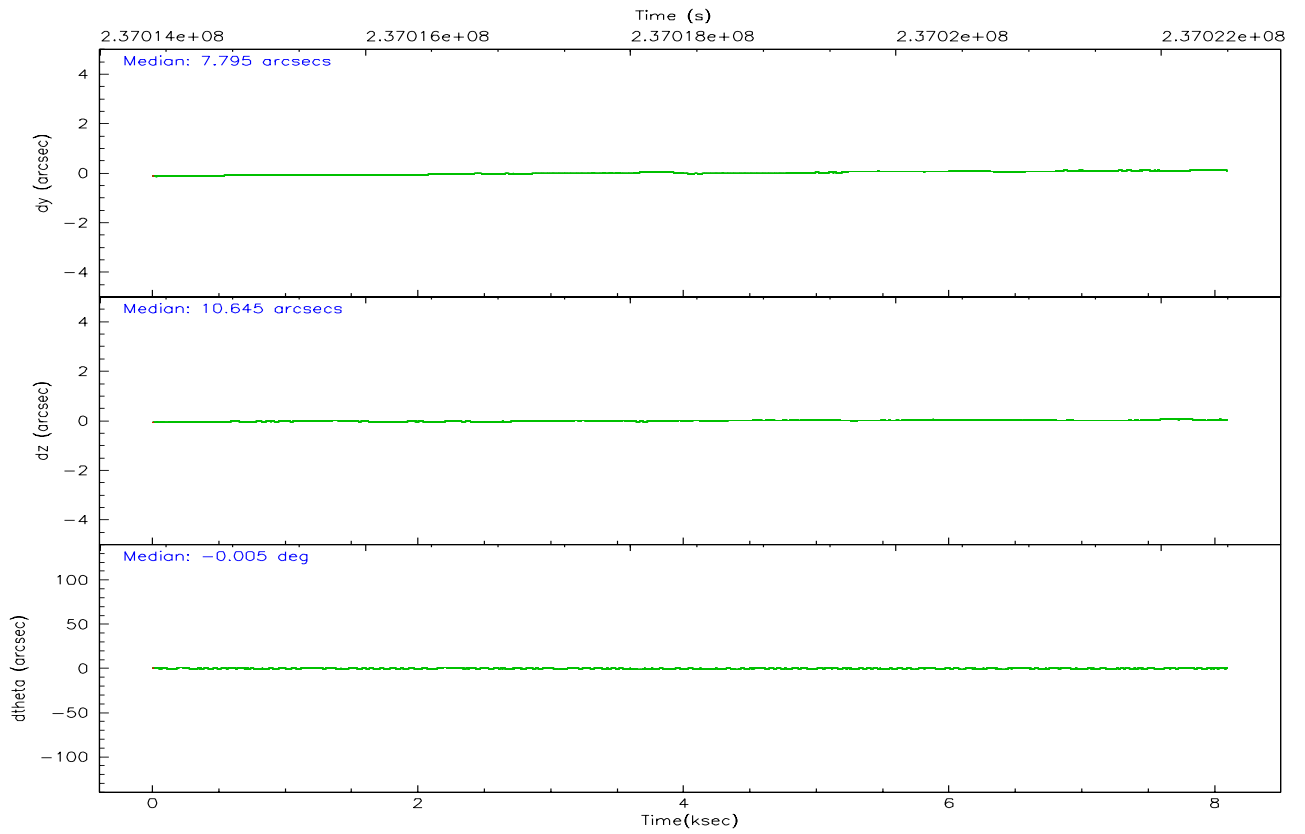
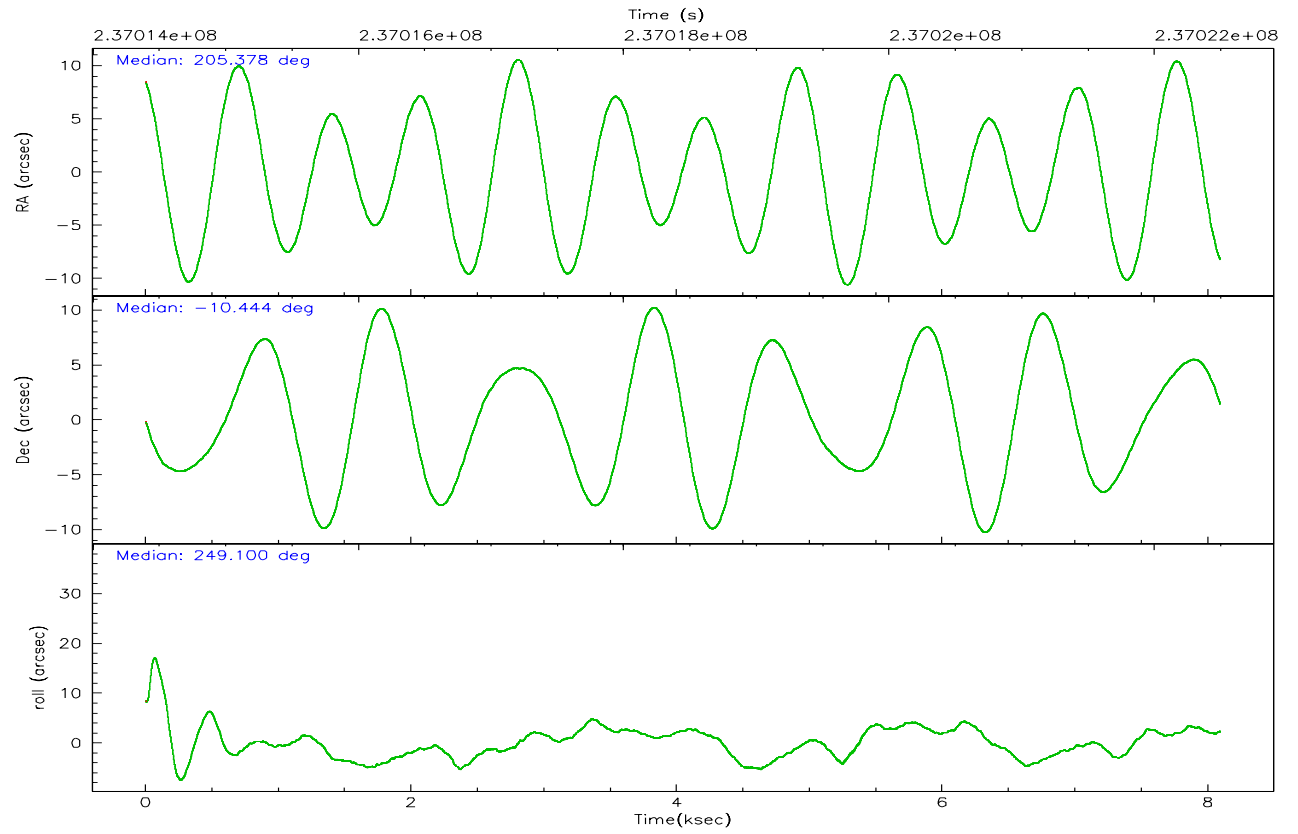
	ccd 2	ccd 3	ccd 5	ccd 6	ccd 7	ccd 8
grade 0 events	799	570	1116	734	937	2972
	1%	1%	16%	1%	19%	7%
grade 1 events	17	12	27	9	15	24
	0%	0%	0%	0%	0%	0%
grade 2 events	426	155	1789	288	1273	2412
	0%	0%	27%	0%	26%	5%
grade 3 events	213	206	518	221	571	1317
	0%	0%	7%	0%	11%	3%
grade 4 events	255	178	524	233	517	1186
	0%	0%	7%	0%	10%	2%
grade 5 events	43	32	319	31	140	220
	0%	0%	4%	0%	2%	0%
grade 6 events	193	119	562	101	498	3065
	0%	0%	8%	0%	10%	7%
grade 7 events	41973	33690	1755	35705	905	29147
	95%	96%	26%	95%	18%	72%

## 2.2 Compared Parameters

Parameter	Planned	Actual	Parameter	Planned	Actual
Instrument	ACIS	ACIS	Obspar format version number	6	6
Detector	ACIS-235678	ACIS-235678	Obspar file type	PREDICTED	ACTUAL
Grating	NONE	NONE	Obspar update status	NONE	UPDATED
Data mode	VFAINT	VFAINT	On-chip summing requested	N	N
Observation mode	POINTING	POINTING	Subarray requested	NONE	NONE
Pointing RA	205.373429	205.3782004919094	Alternating exposures requested	N	N
Pointing Dec	-10.416880	-10.44368844362676	Primary exposure time	0.000000	3.2
Pointing Roll	248.952657	249.1101252229863			
Window start time	236966464.184000	236966464.184000			
Window stop time	237031264.184000	237031264.184000			
SIM focus pos (mm)	-0.684267	-0.6828225247311905			
SIM defocus (mm)	0	0.001444936568705701			
SIM translation stage pos (mm)	-190.132523	-190.1400660498719			
SIM translation stage offset (mm)	0	0.00754346686406393			
Observation start time	237014596.184000	237014220.19259			
Observation start date	2005-07-06T05:22:12	2005-07-06T05:17:00			
Observation end time	237022496.184000	237023443.14301			
Observation end date	2005-07-06T07:33:52	2005-07-06T07:50:43			
Read mode	TIMED	TIMED			

## 2.3 Aspect



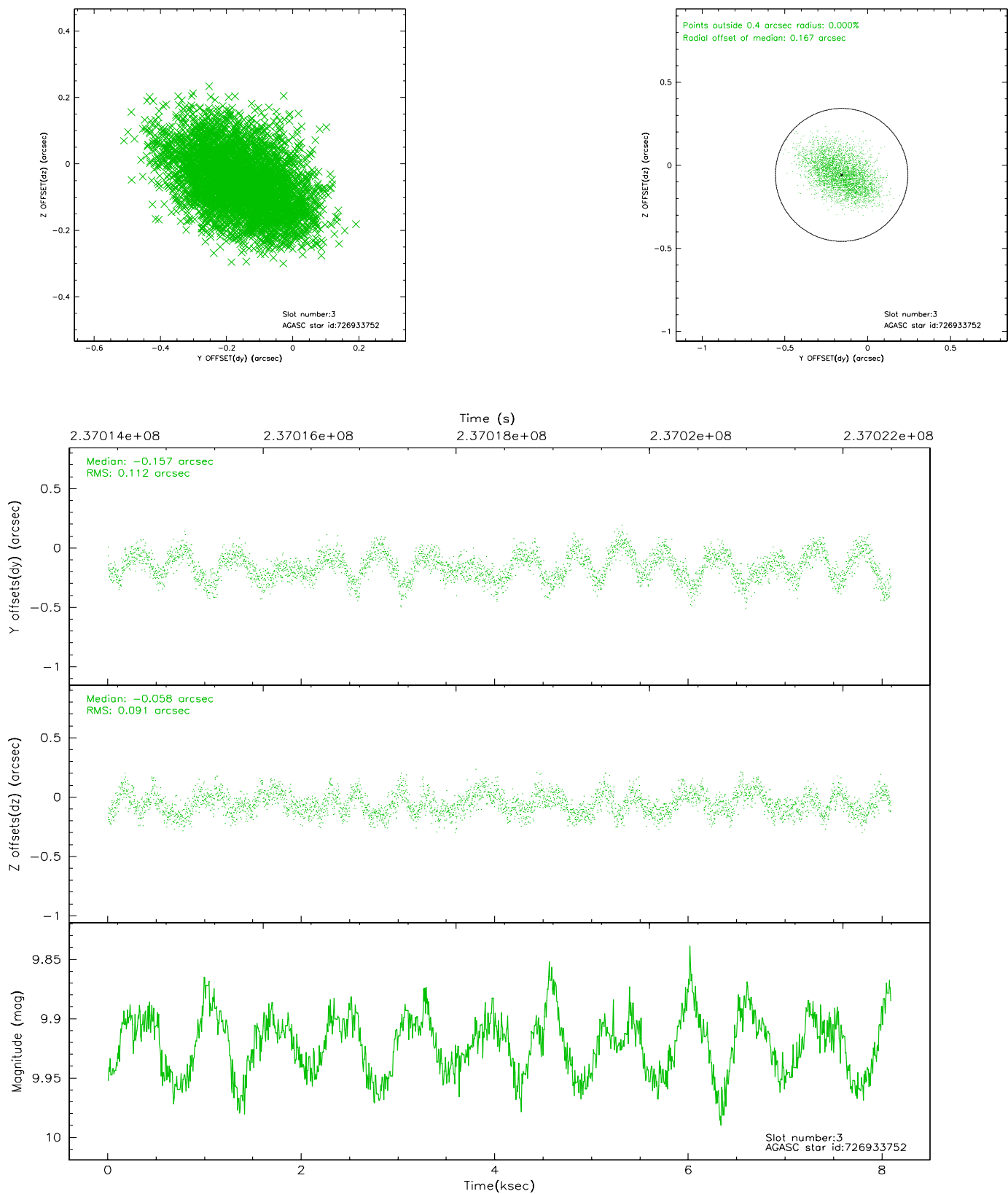


### Slot Statistics

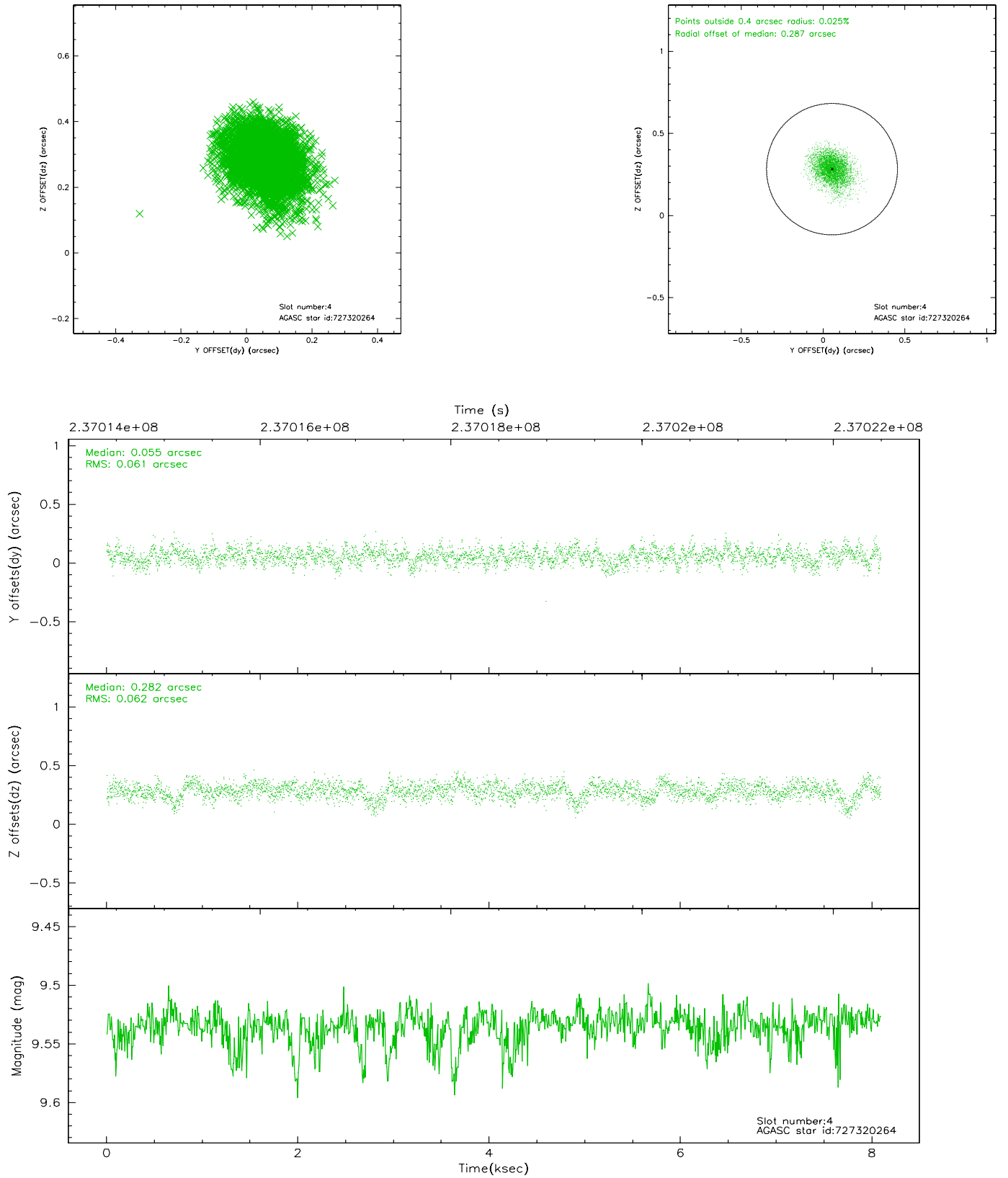
slot	status	id	mag	n_pts	med_dy	med_dz	dr1	dr2	ra	dec	mean_y	mean_z
0	FID	ACIS-S-2	7.11	1974	-0.034	0.008	0.007	0.011	0.000000	0.000000	-760.57	-1731.92
1	FID	ACIS-S-4	7.20	1973	0.064	0.015	0.006	0.011	0.000000	0.000000	2152.45	175.92
2	FID	ACIS-S-5	7.23	1973	-0.061	-0.014	0.007	0.012	0.000000	0.000000	-1812.59	170.26
3	GUIDE	726933752	9.92	3941	-0.157	-0.058	0.156	0.245	205.376260	-9.946078	-1584.92	-599.83
4	GUIDE	727320264	9.53	3944	0.055	0.282	0.091	0.152	205.464326	-10.871323	1411.59	887.82
5	GUIDE	727321088	9.43	3946	0.285	-0.552	0.124	0.194	204.964296	-10.686432	1427.71	-1002.18
6	GUIDE	727321928	10.09	3936	-0.056	0.180	0.138	0.217	205.258401	-10.105722	-897.96	-783.13
7	GUIDE	727326472	10.09	3928	-0.113	0.153	0.165	0.287	205.620857	-10.902930	1319.21	1444.92

## 2.4 Star Slots

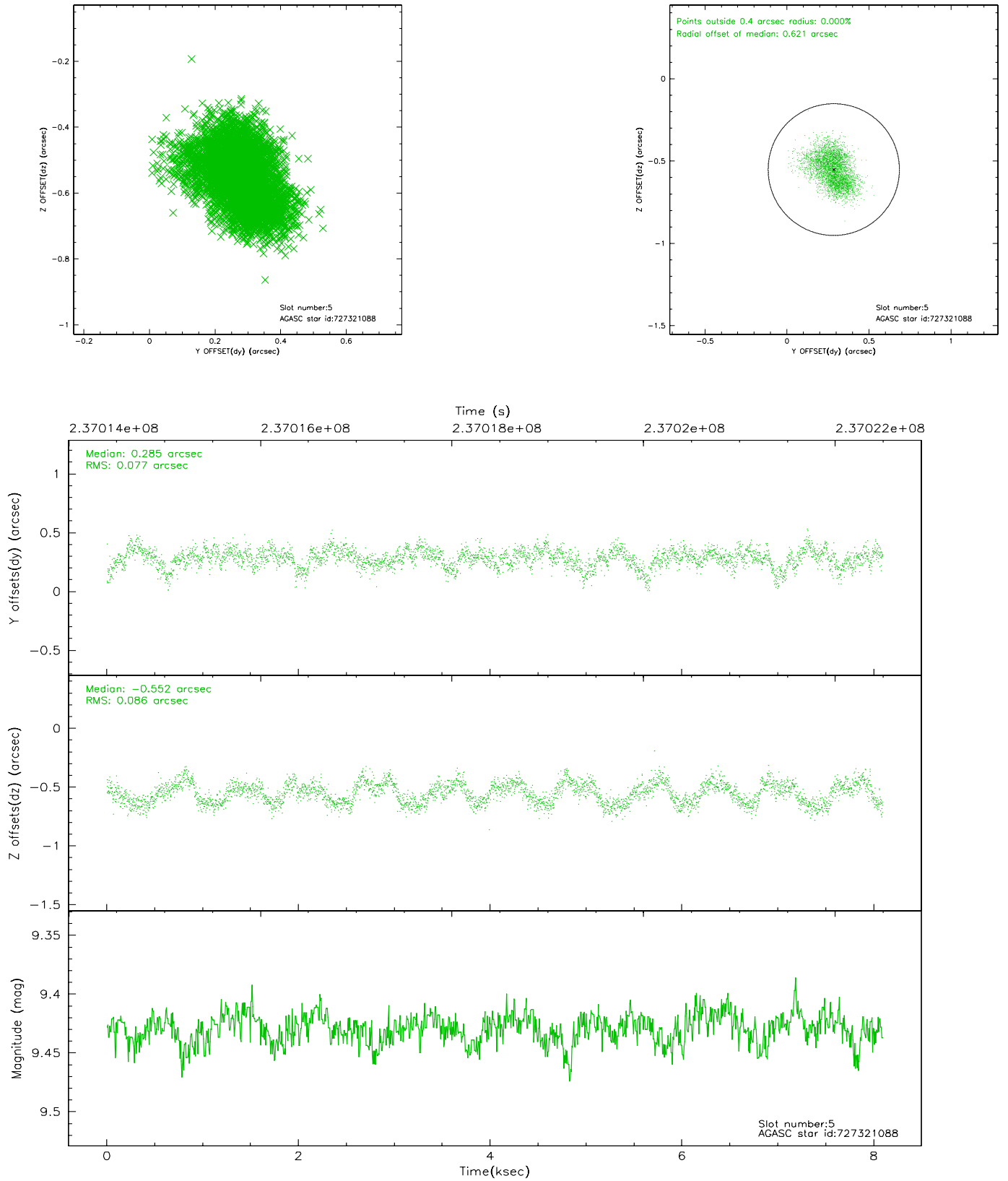
### 2.4.1 Slot 3



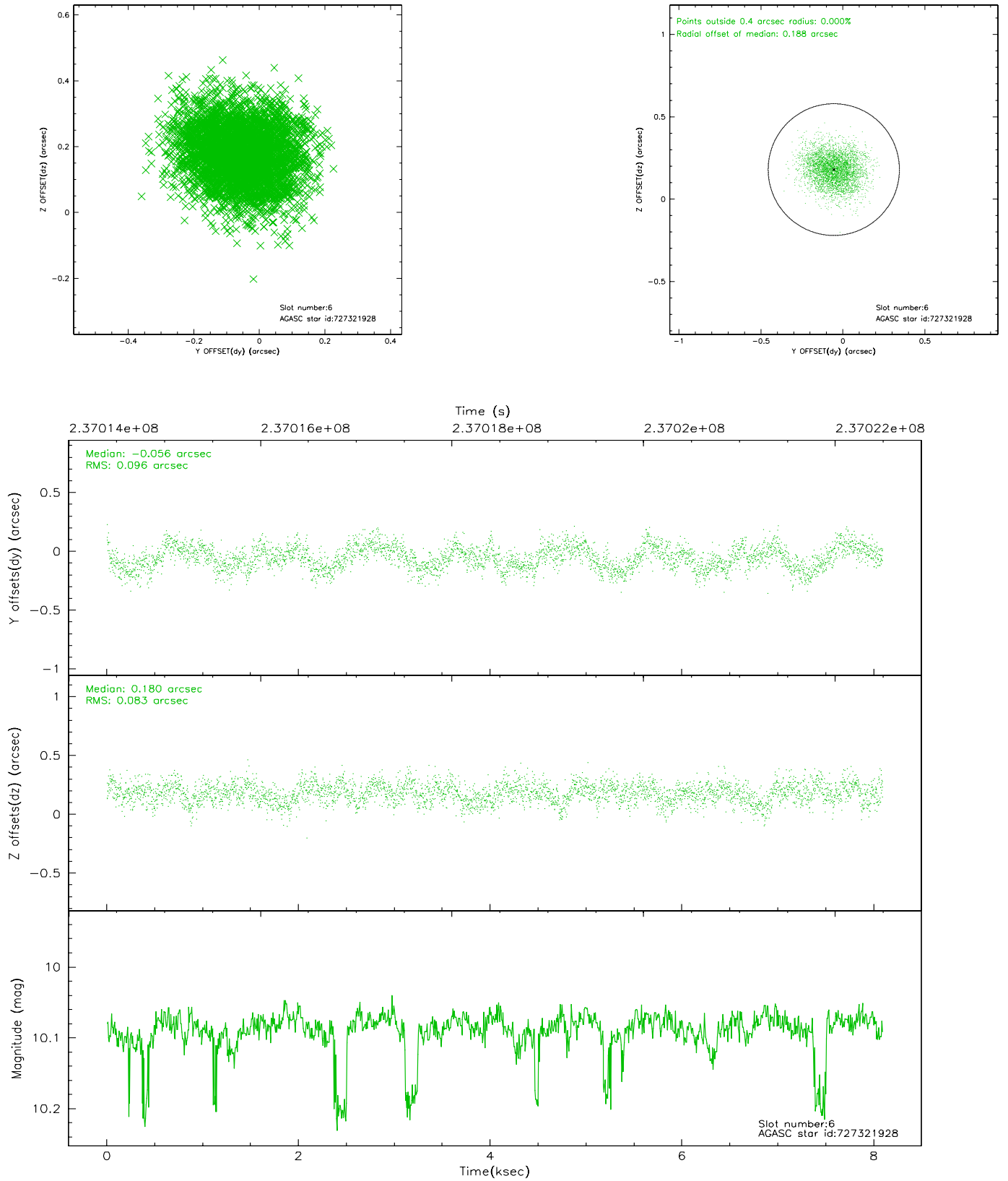
## 2.4.2 Slot 4



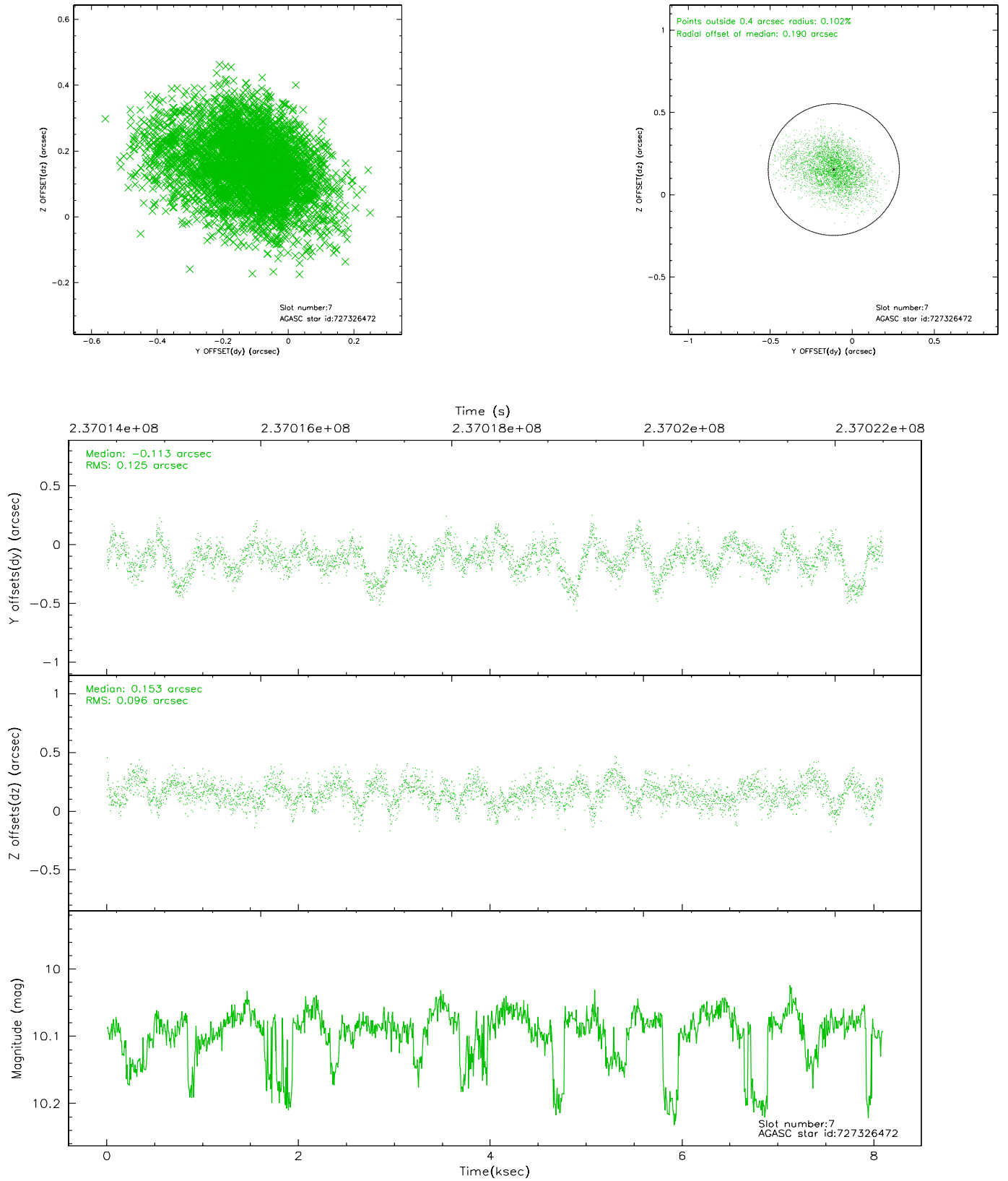
### 2.4.3 Slot 5



## 2.4.4 Slot 6

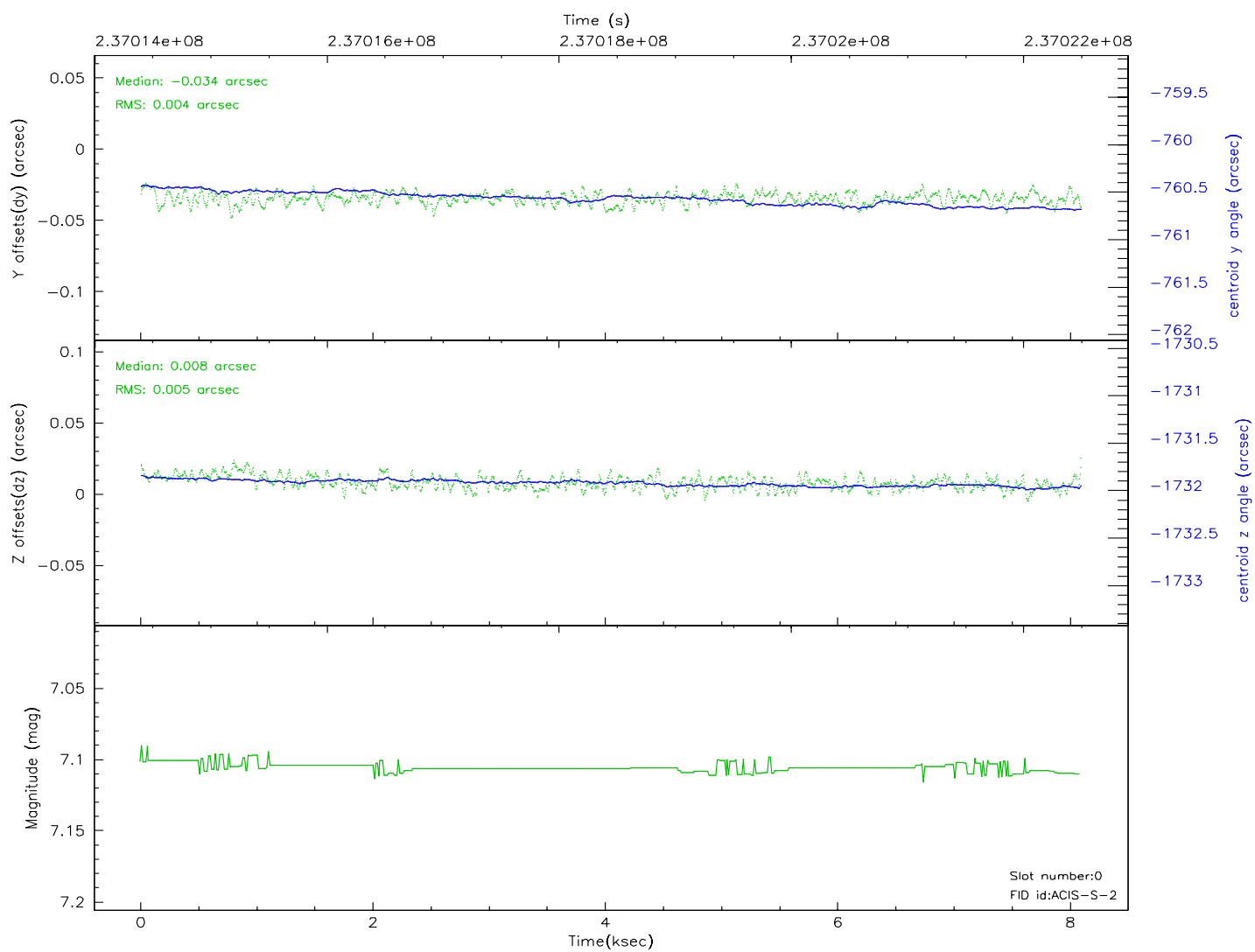
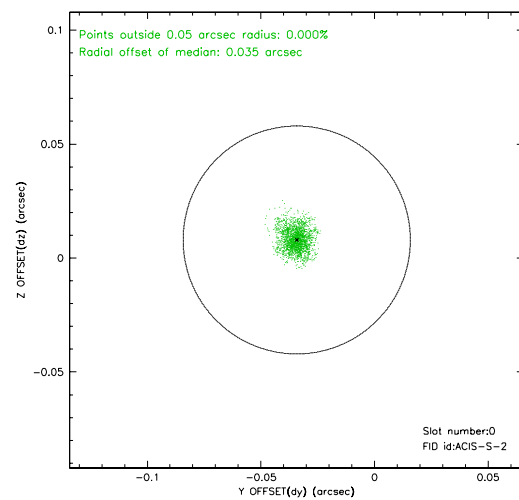
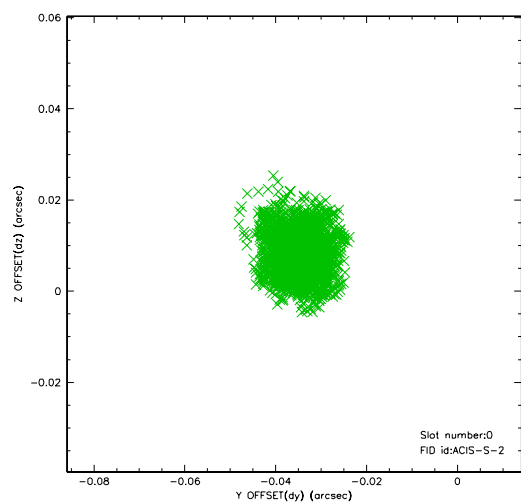


## 2.4.5 Slot 7

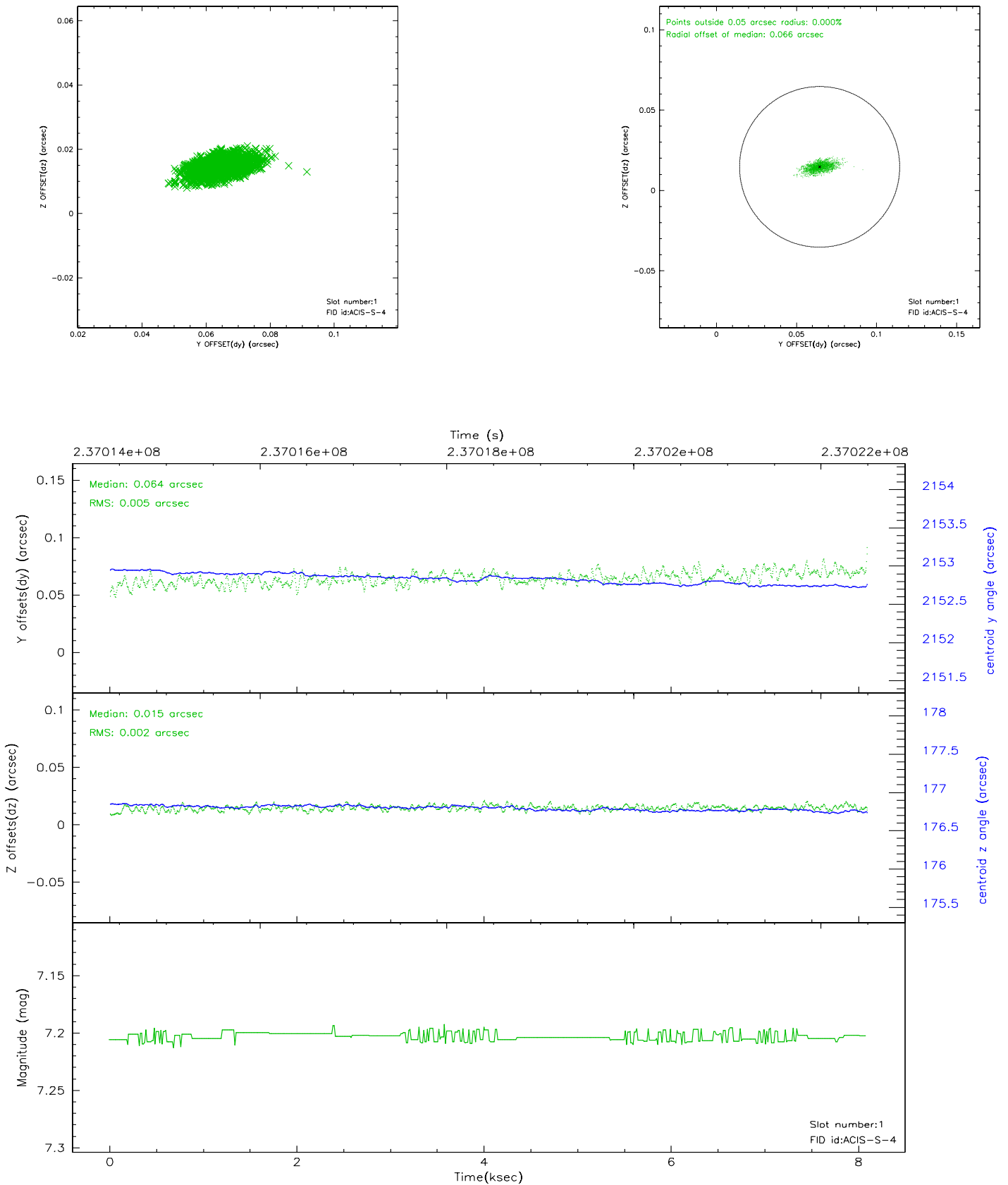


## 2.5 FID Slots

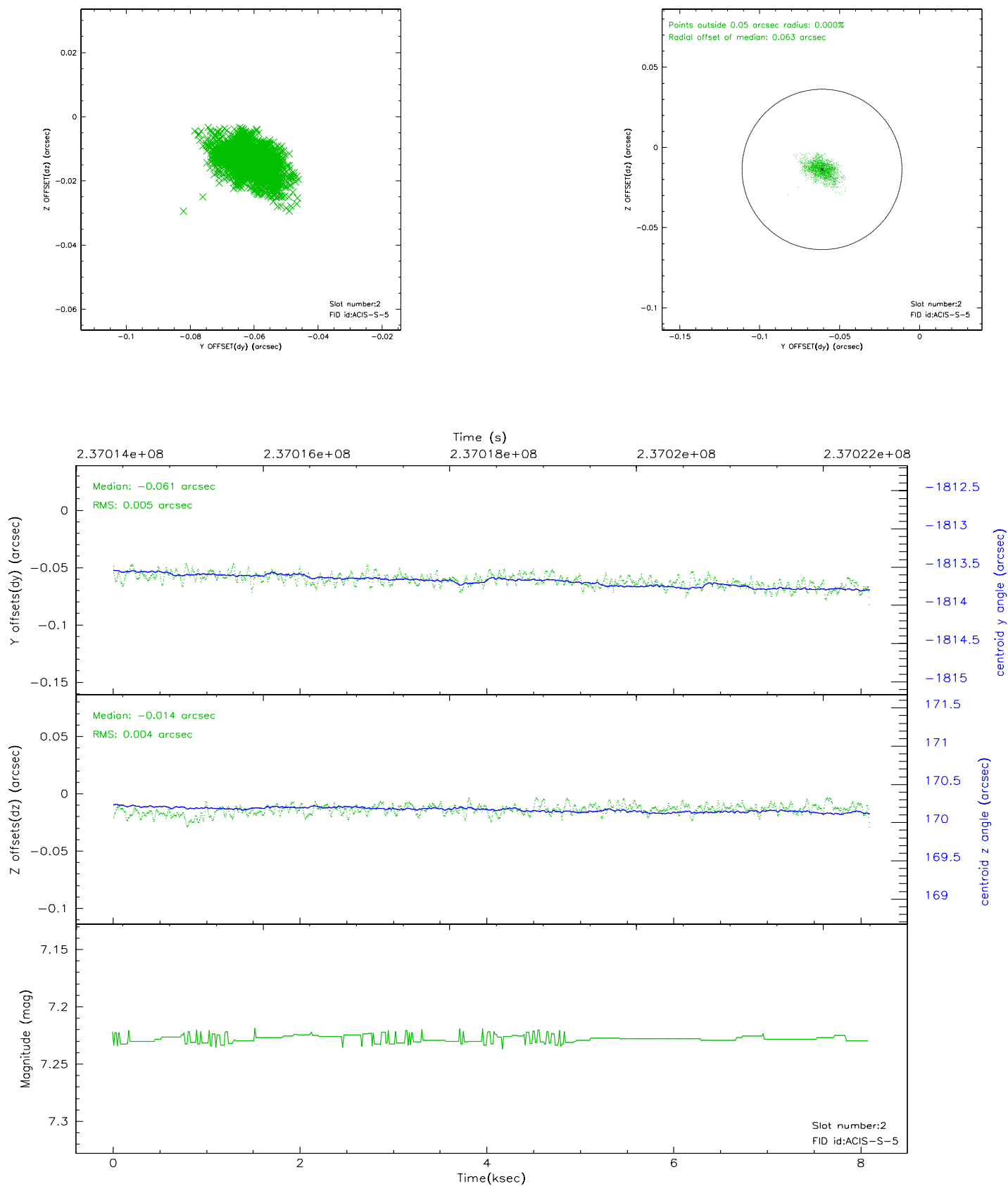
### 2.5.1 Slot 0



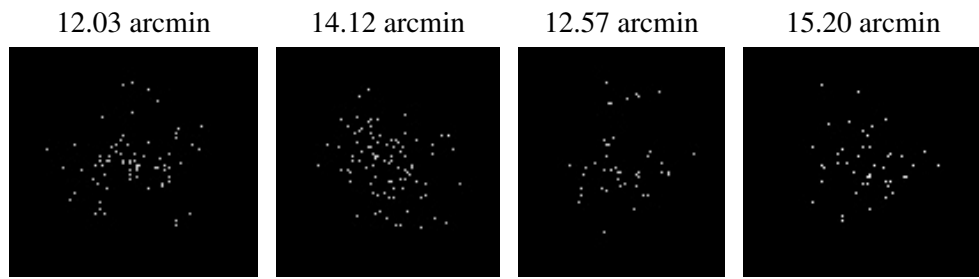
## 2.5.2 Slot 1



## 2.5.3 Slot 2



### 3 Point Sources



## A Summary

### A.1 Status

V&V Scientist	Jen Lauer
V&V Date (YYYY-MM-DD)	2006.03.14
V&V Edition	1
V&V Disposition and Status	OK
V&V Charge Time	8.083199

### A.2 Comments

Window constraint met.