

V&V Reference Report

L2 ASCDS Version : 7.6.7.1

Observation 5366 - L2 Version 002
Chandra X-Ray Center

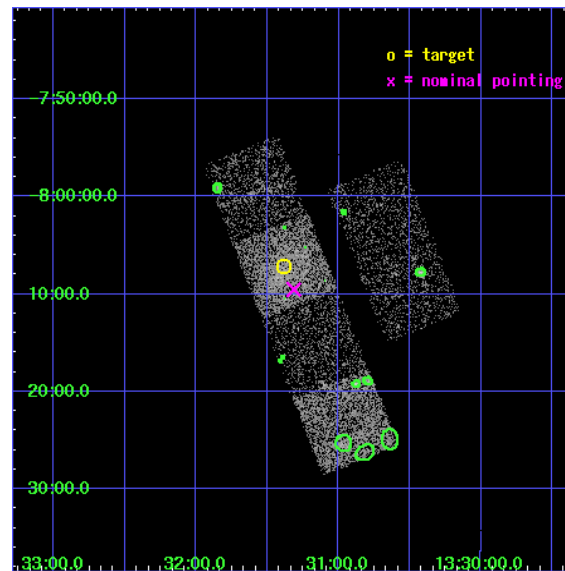
L2 Processing Date : Mar 11 2006

Contents

1	Front	2
2	OBI	3
2.1	OBI	3
2.1.1	Images	3
2.1.2	Bias	3
2.1.3	Parameters	4
2.1.4	Events	4
2.2	Compared Parameters	5
2.3	Aspect	6
2.4	Star Slots	9
2.4.1	Slot 3	9
2.4.2	Slot 4	10
2.4.3	Slot 5	11
2.4.4	Slot 6	12
2.4.5	Slot 7	13
2.5	FID Slots	14
2.5.1	Slot 0	14
2.5.2	Slot 1	15
2.5.3	Slot 2	16
3	Point Sources	17
A	Summary	18
A.1	Status	18
A.2	Comments	18

1 Front

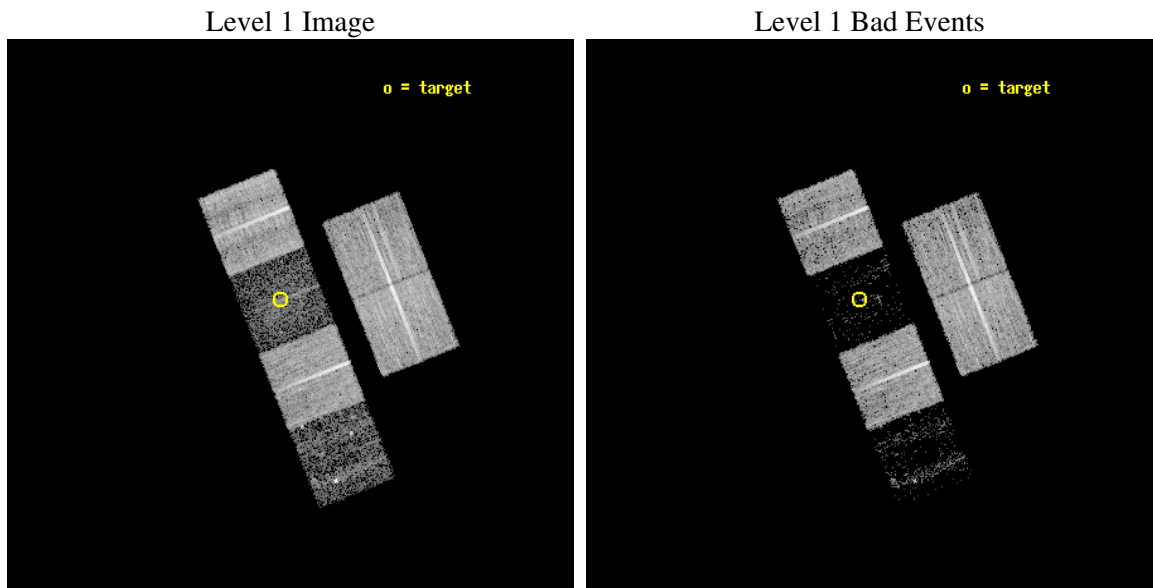
seq_num	100054
obs_id	5366
title	Comet 9P/Tempel 1 During the Deep Impact Encounter
observer	Dr. Carey Lisse
object	9P/Tempel 1
dtcycle	0
cycle	P
ra_targ	202.846045
dec_targ	-8.11978
ra_nom	202.82844193934
dec_nom	-8.158988077672
roll_nom	248.30011136154
revision	2
ontime	9961.5999628901
livetime	9835.4601860047
ontime2	9961.5999628901
ontime3	9958.3590025306
ontime5	9961.5999628901
ontime6	9961.5999628901
ontime7	9961.5999628901
ontime8	9961.5999628901
l2events	15409



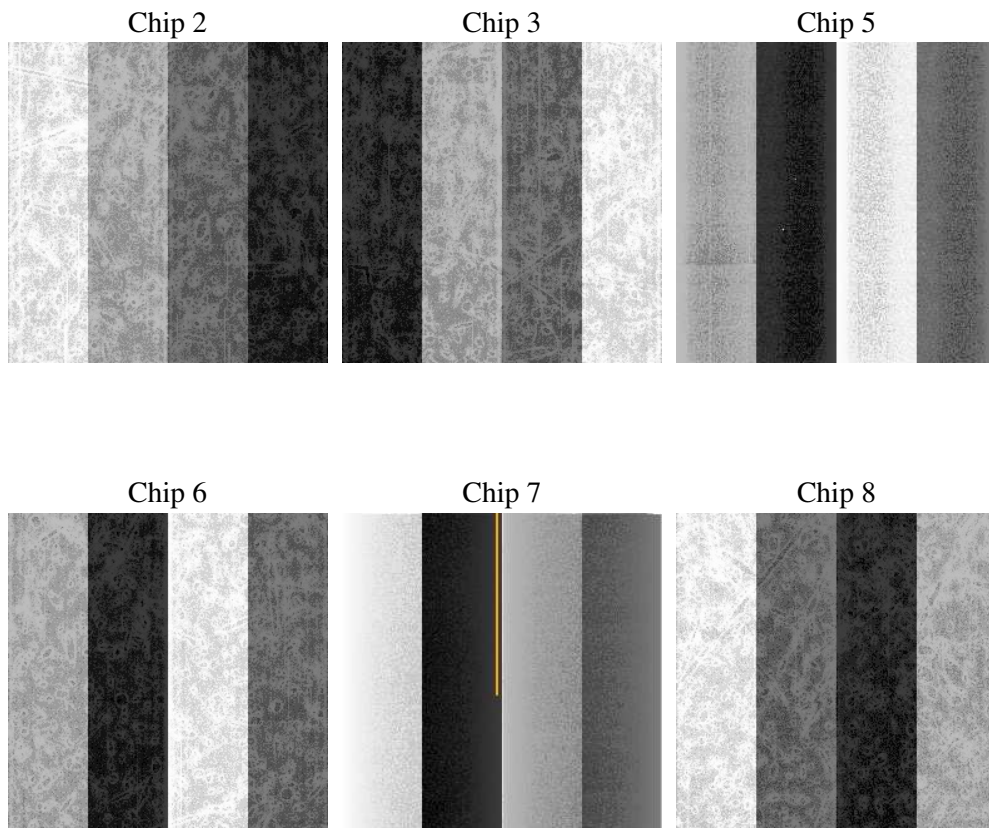
2 OBI

2.1 OBI

2.1.1 Images



2.1.2 Bias



2.1.3 Parameters

obi_num	0
ascdsver	7.6.7.1
caldbver	3.2.1
date	2006-03-11T23:05:10
revision	2

sched_exp_time	10000.000000
ontime	10095.73641175
ontime2	10095.73641175
ontime3	10092.495451391
ontime5	10095.73641175
ontime6	10095.73641175
ontime7	10095.73641175
ontime8	10095.73641175
l1events	205118

2.1.4 Events

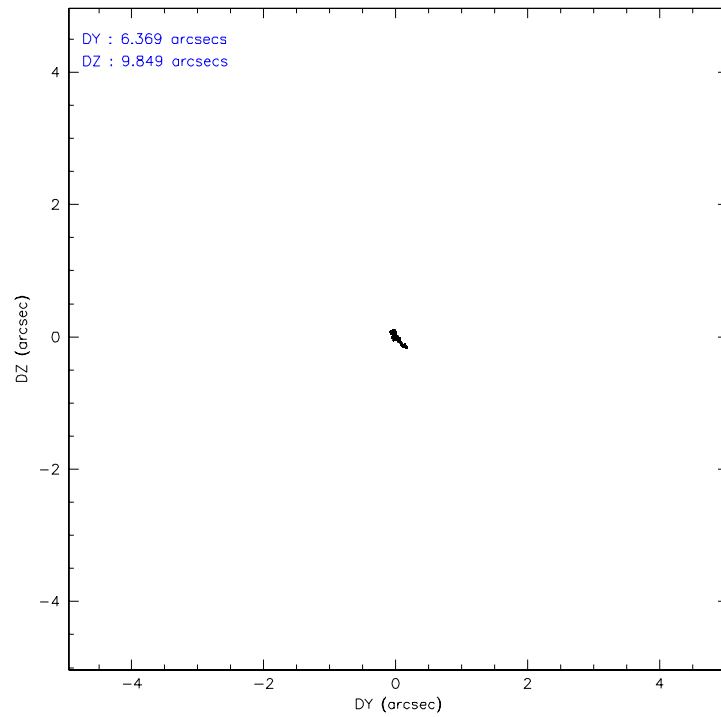
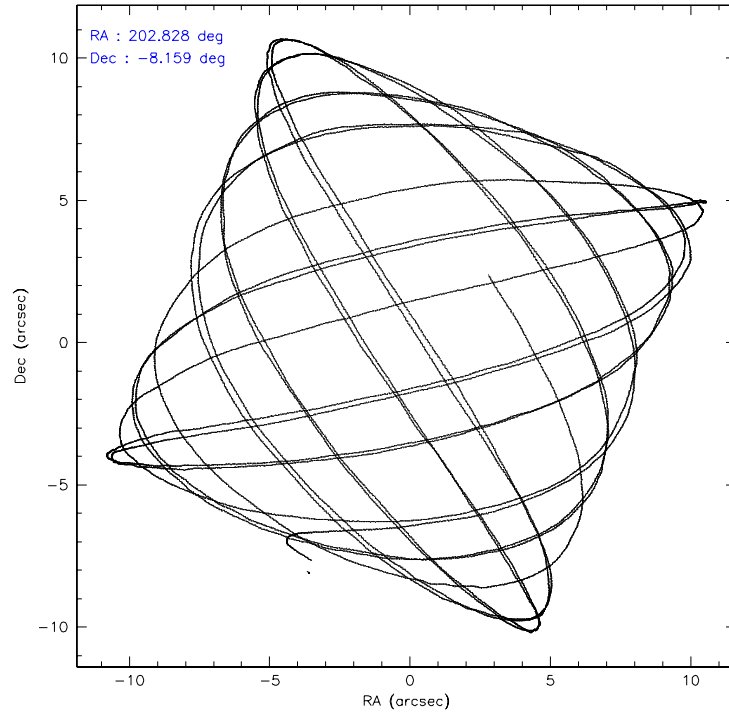
	ccd 2	ccd 3	ccd 5	ccd 6	ccd 7	ccd 8
level 1 events	51719	42943	8419	43803	7486	50748
rejected events	49552	41555	2612	41819	1398	38700
rejected %	95%	96%	31%	95%	18%	76%

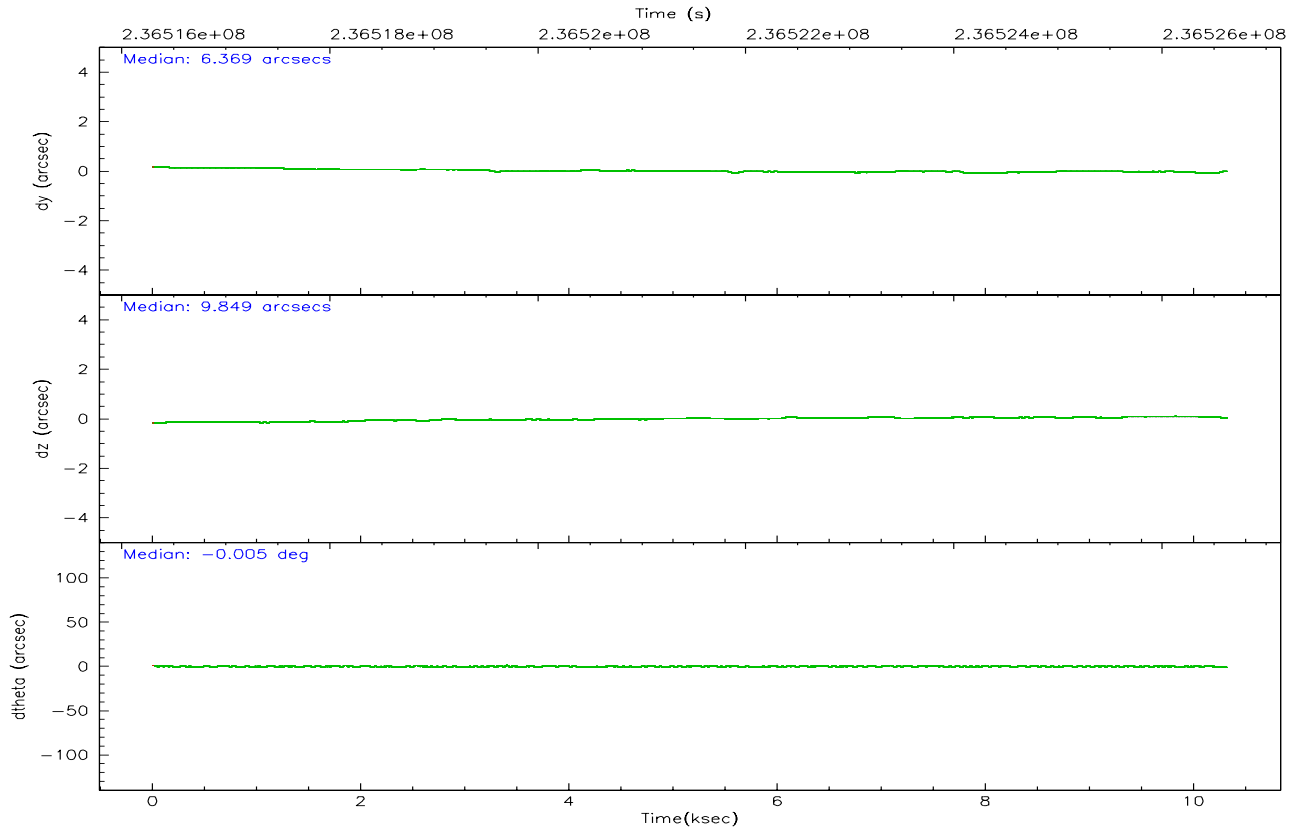
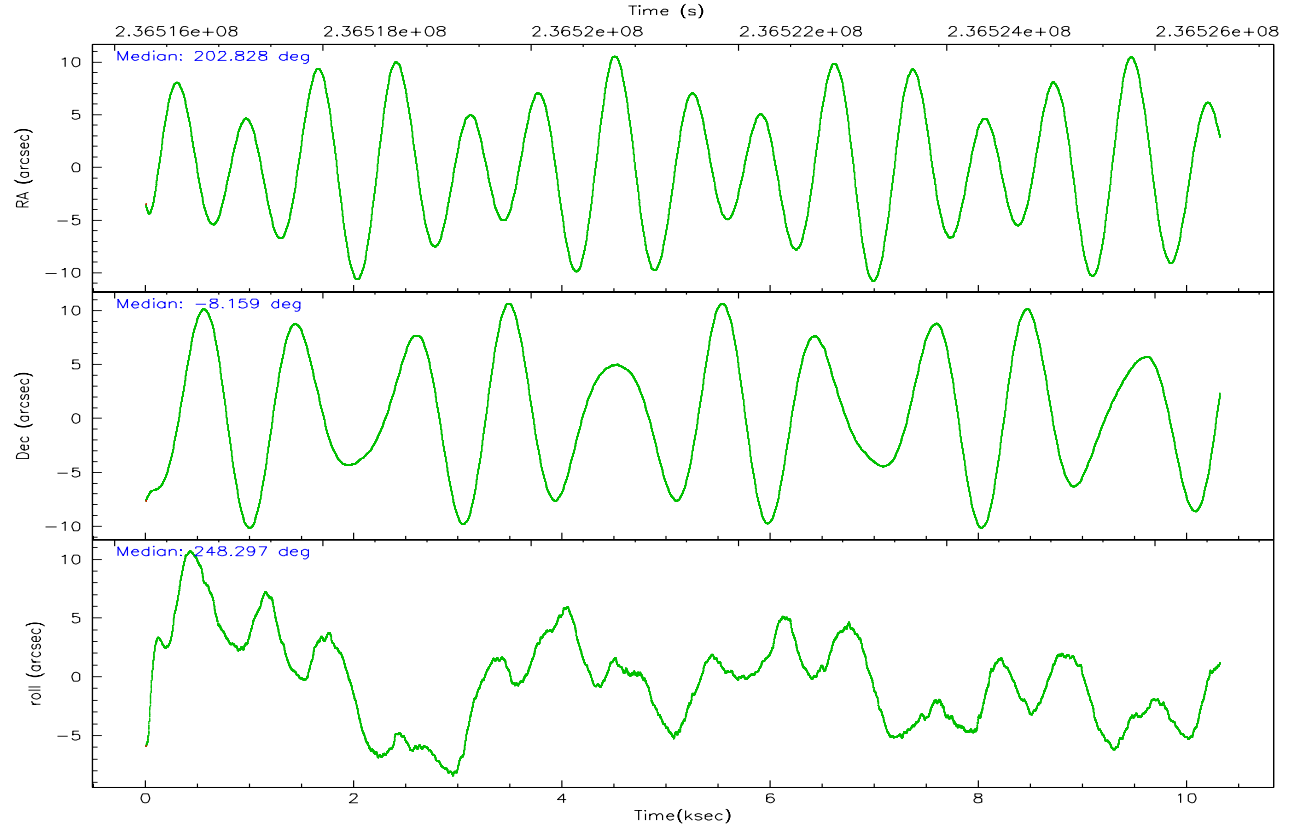
	ccd 2	ccd 3	ccd 5	ccd 6	ccd 7	ccd 8
grade 0 events	946	649	1754	920	1887	3441
	1%	1%	20%	2%	25%	6%
grade 1 events	21	15	156	11	15	29
	0%	0%	1%	0%	0%	0%
grade 2 events	497	183	2054	372	1950	2834
	0%	0%	24%	0%	26%	5%
grade 3 events	251	241	715	282	867	1404
	0%	0%	8%	0%	11%	2%
grade 4 events	303	213	654	308	797	1304
	0%	0%	7%	0%	10%	2%
grade 5 events	59	34	375	40	143	255
	0%	0%	4%	0%	1%	0%
grade 6 events	197	128	690	128	698	3245
	0%	0%	8%	0%	9%	6%
grade 7 events	49445	41480	2021	41742	1129	38236
	95%	96%	24%	95%	15%	75%

2.2 Compared Parameters

Parameter	Planned	Actual	Parameter	Planned	Actual
Instrument	ACIS	ACIS	Obspar format version number	6	6
Detector	ACIS-235678	ACIS-235678	Obspar file type	PREDICTED	ACTUAL
Grating	NONE	NONE	Obspar update status	NONE	UPDATED
Data mode	VFAINT	VFAINT	On-chip summing requested	N	N
Observation mode	POINTING	POINTING	Subarray requested	NONE	NONE
Pointing RA	202.824060	202.828441939338	Alternating exposures requested	N	N
Pointing Dec	-8.132058	-8.158988077672019	Primary exposure time	0.000000	3.2
Pointing Roll	248.142878	248.3001113615401			
SIM focus pos (mm)	-0.684267	-0.6828225247311905			
SIM defocus (mm)	0	0.001444936568705701			
SIM translation stage pos (mm)	-190.132523	-190.1400660498719			
SIM translation stage offset (mm)	0	0.00754346686406393			
Observation start time	236516630.184000	236515602.25728			
Observation start date	2005-06-30T11:02:46	2005-06-30T10:46:42			
Observation end time	236526630.184000	236526764.50779			
Observation end date	2005-06-30T13:49:26	2005-06-30T13:52:44			
Read mode	TIMED	TIMED			

2.3 Aspect



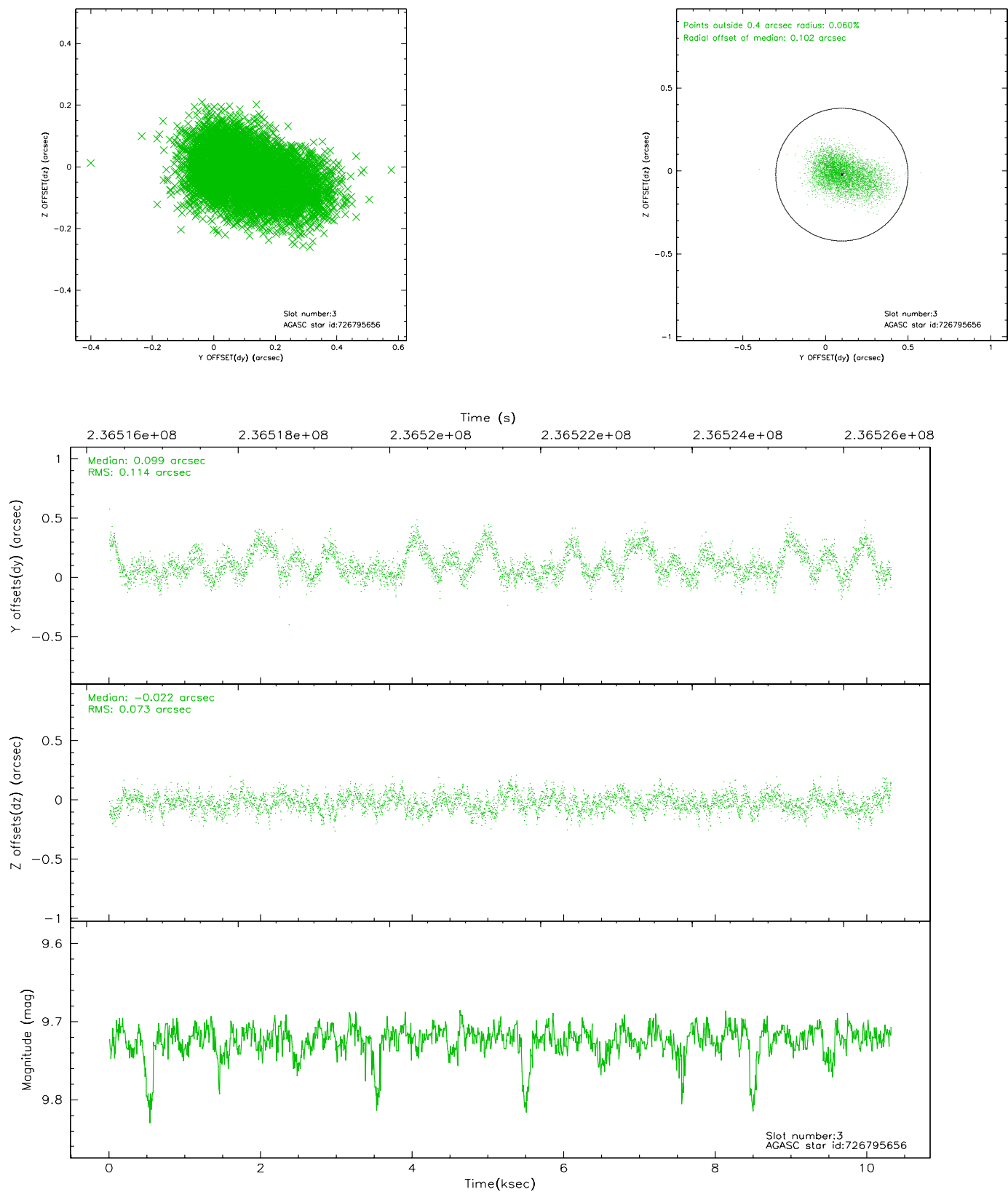


Slot Statistics

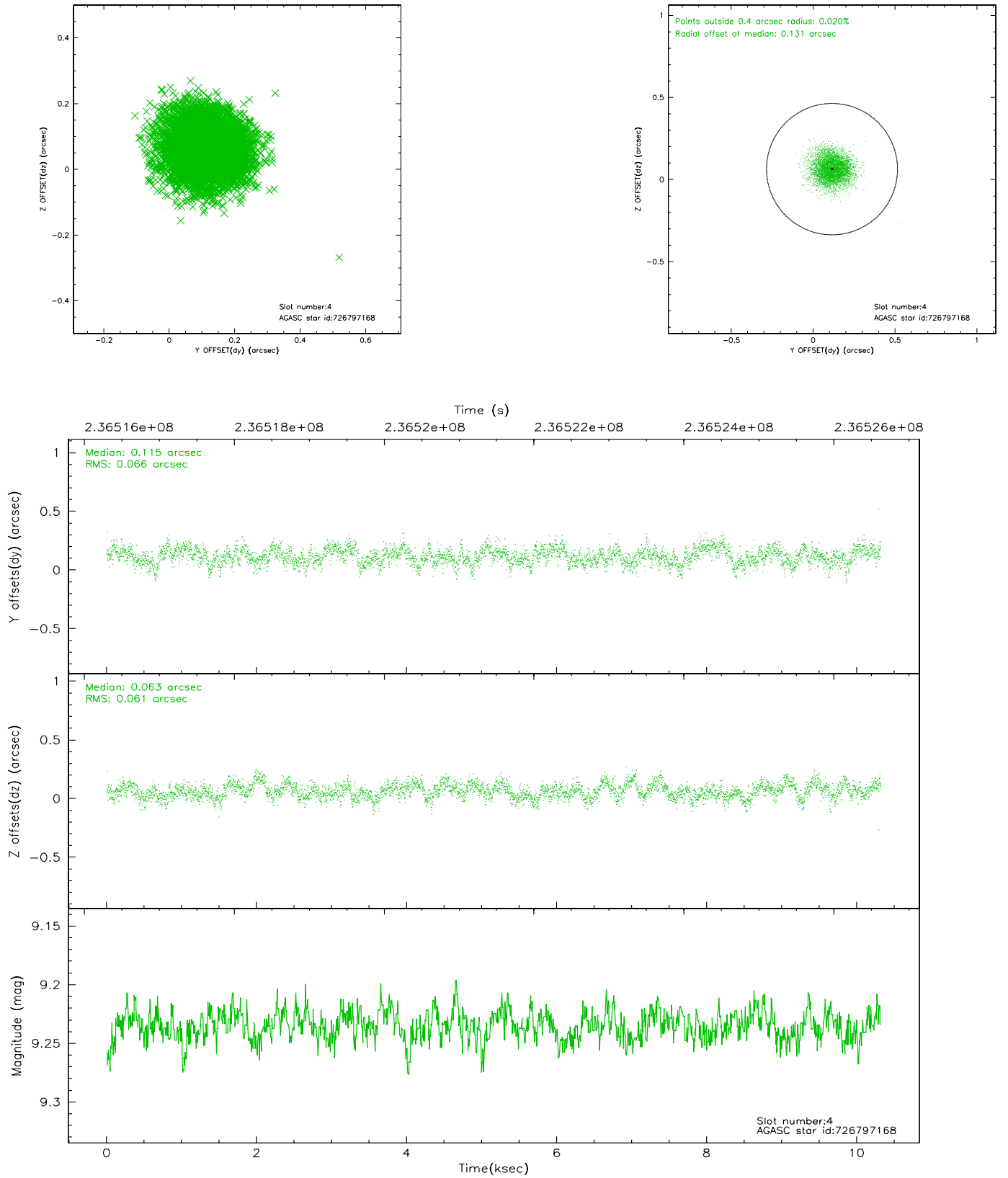
slot	status	id	mag	n_pts	med_dy	med_dz	dr1	dr2	ra	dec	mean_y	mean_z
0	FID	ACIS-S-2	7.10	2518	-0.058	-0.010	0.007	0.011	0.000000	0.000000	-759.15	-1731.10
1	FID	ACIS-S-4	7.21	2518	0.066	0.031	0.005	0.009	0.000000	0.000000	2153.99	176.94
2	FID	ACIS-S-5	7.23	2518	-0.039	-0.011	0.006	0.011	0.000000	0.000000	-1811.35	171.09
3	GUIDE	726795656	9.72	5030	0.099	-0.022	0.142	0.242	202.576235	-8.591995	1865.85	-202.22
4	GUIDE	726797168	9.23	5034	0.115	0.063	0.096	0.154	202.692279	-8.774007	2320.28	425.34
5	GUIDE	726800704	9.03	5033	-0.333	0.038	0.100	0.156	202.986094	-7.587280	-2034.83	-193.68
6	GUIDE	726799000	10.07	5013	0.141	-0.202	0.283	0.433	202.090075	-8.567627	2430.54	-1840.64
7	GUIDE	726800992	9.58	5030	-0.037	0.113	0.123	0.200	202.715522	-8.788144	2336.65	520.77

2.4 Star Slots

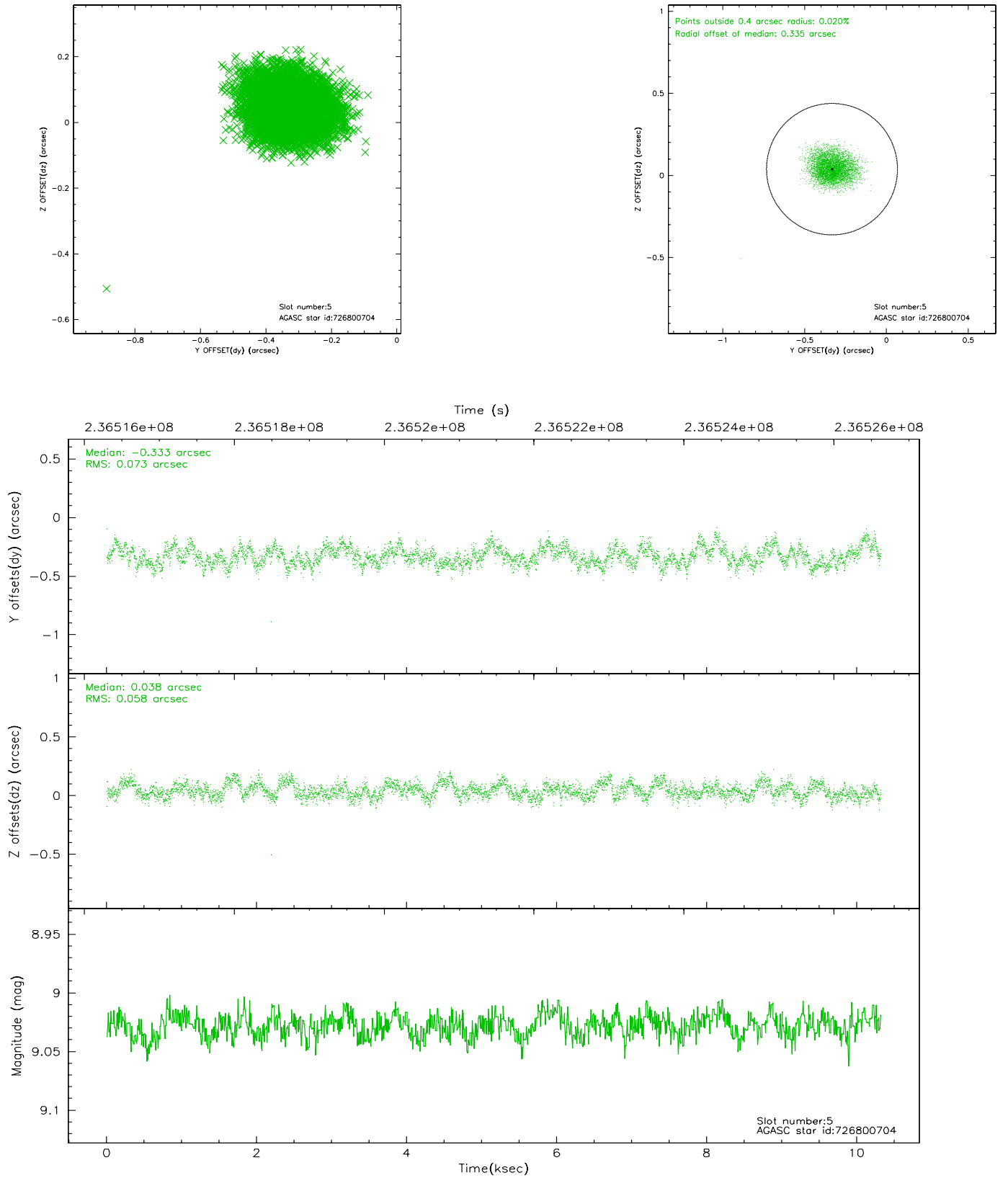
2.4.1 Slot 3



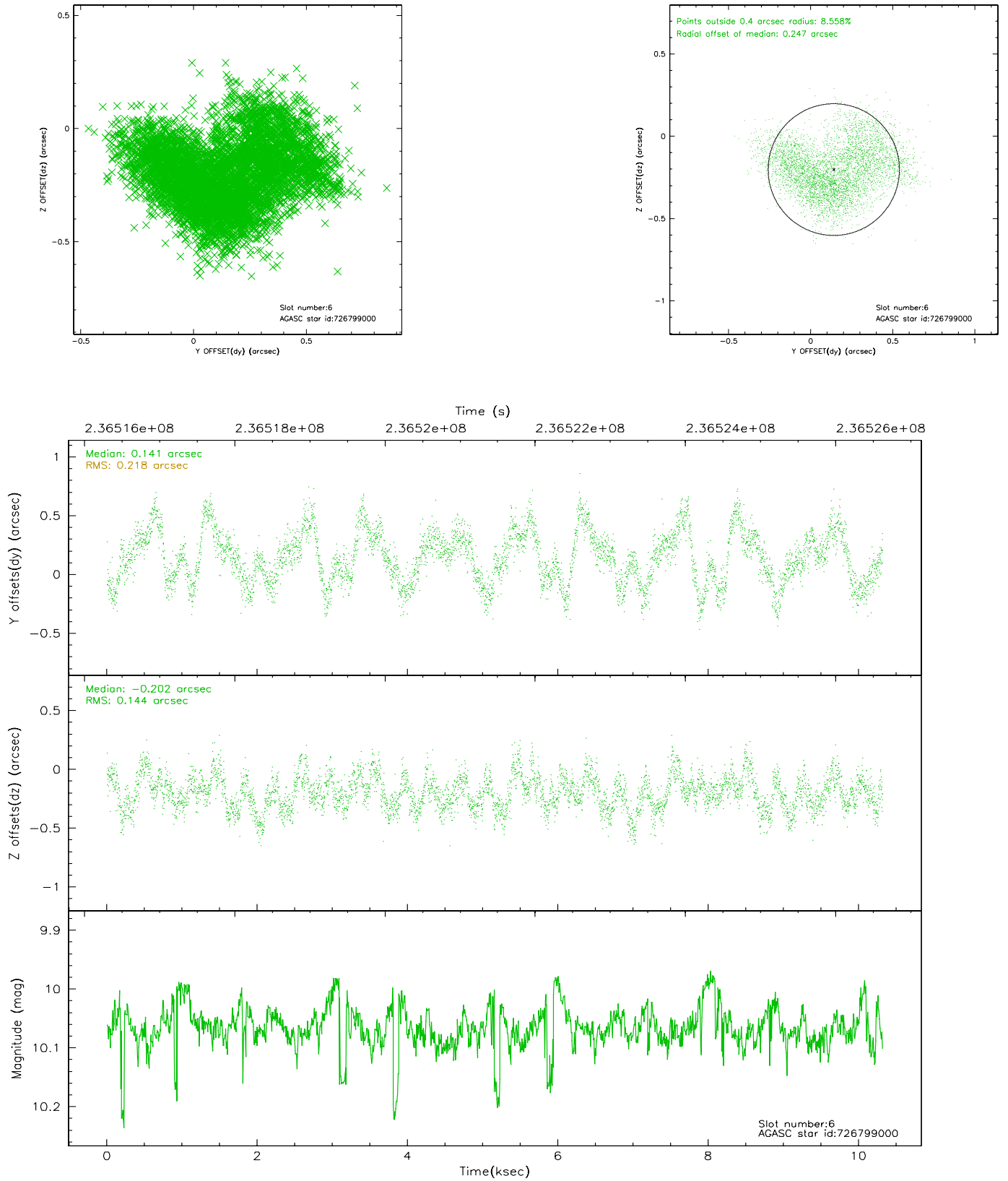
2.4.2 Slot 4



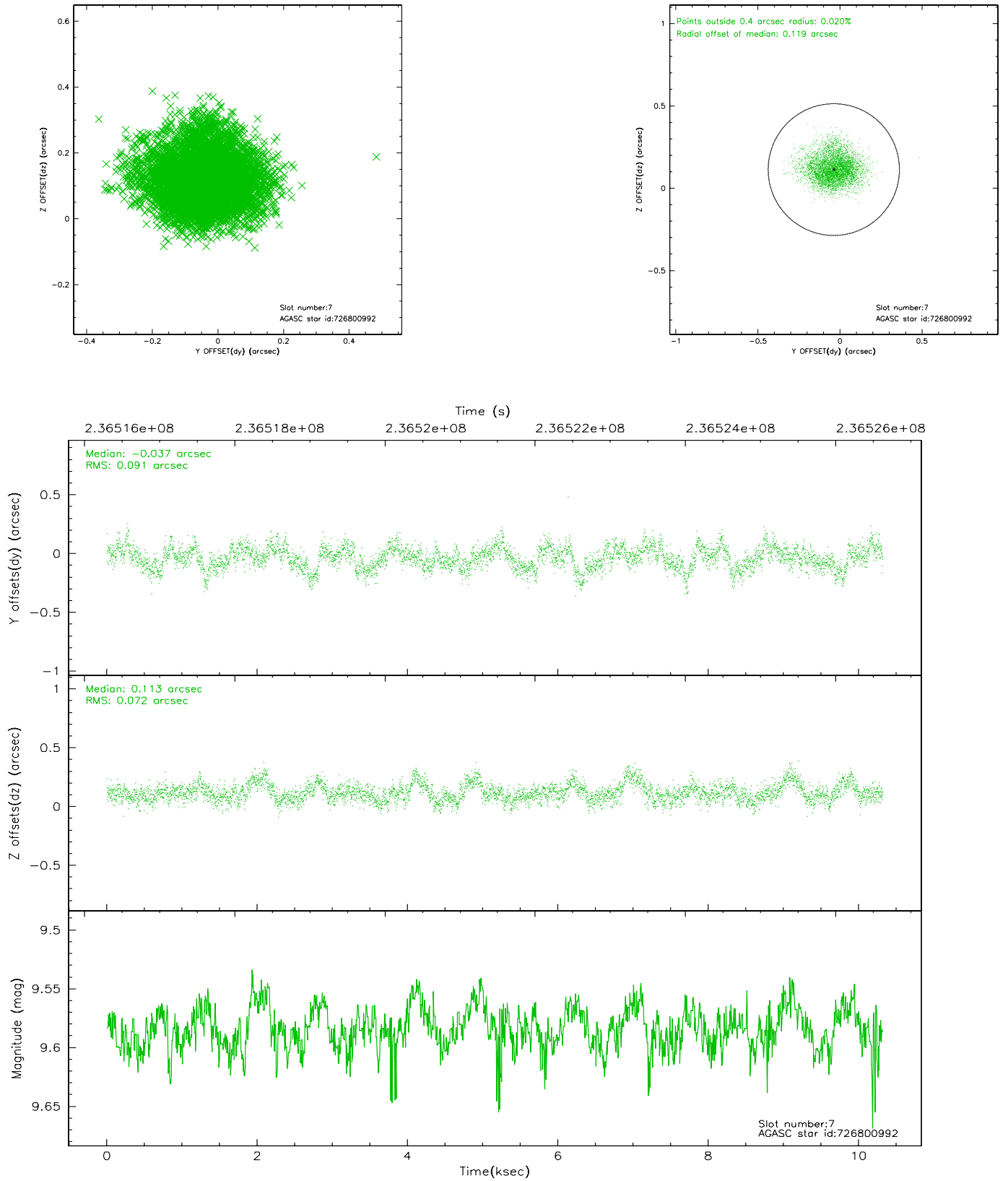
2.4.3 Slot 5



2.4.4 Slot 6

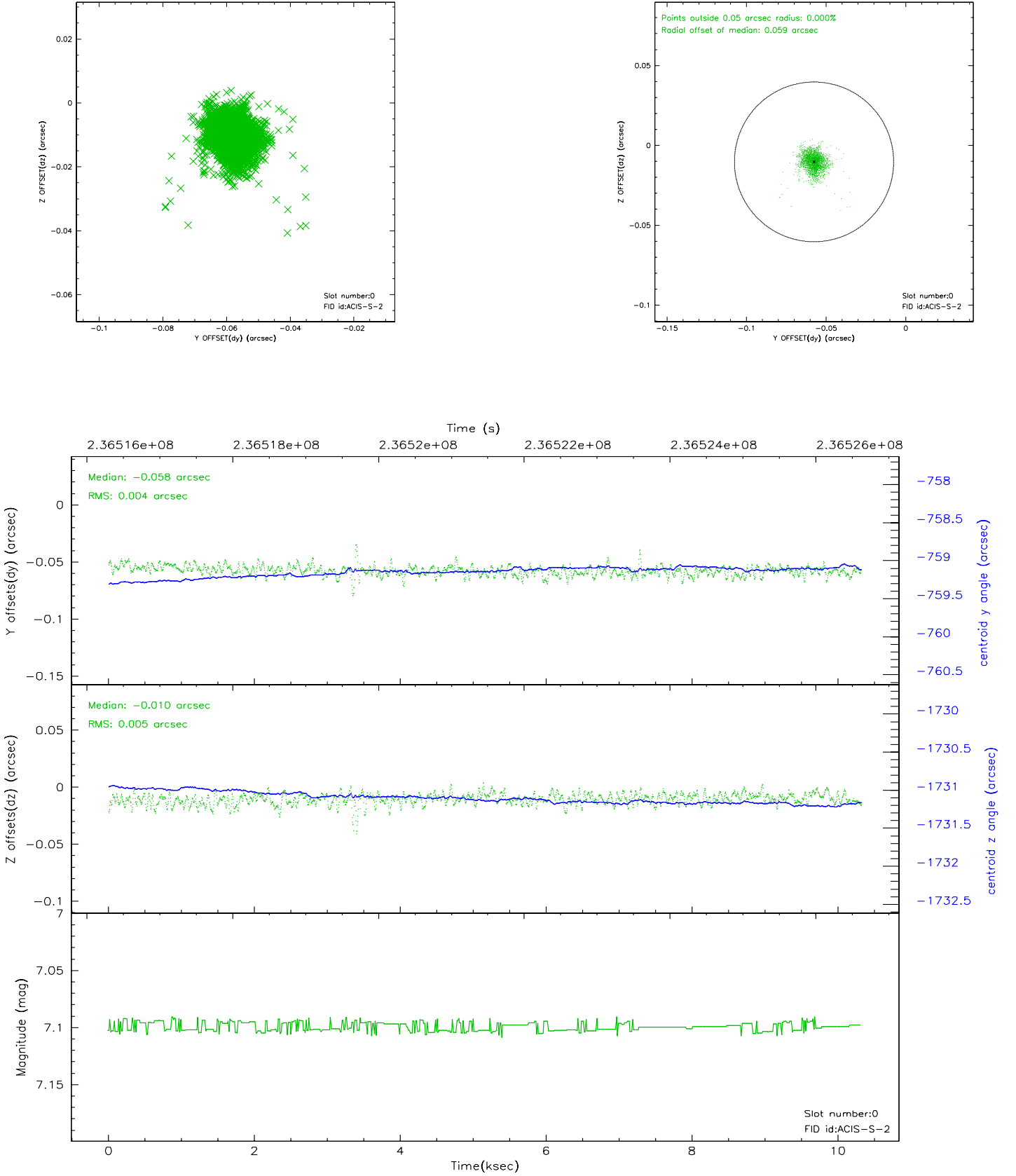


2.4.5 Slot 7

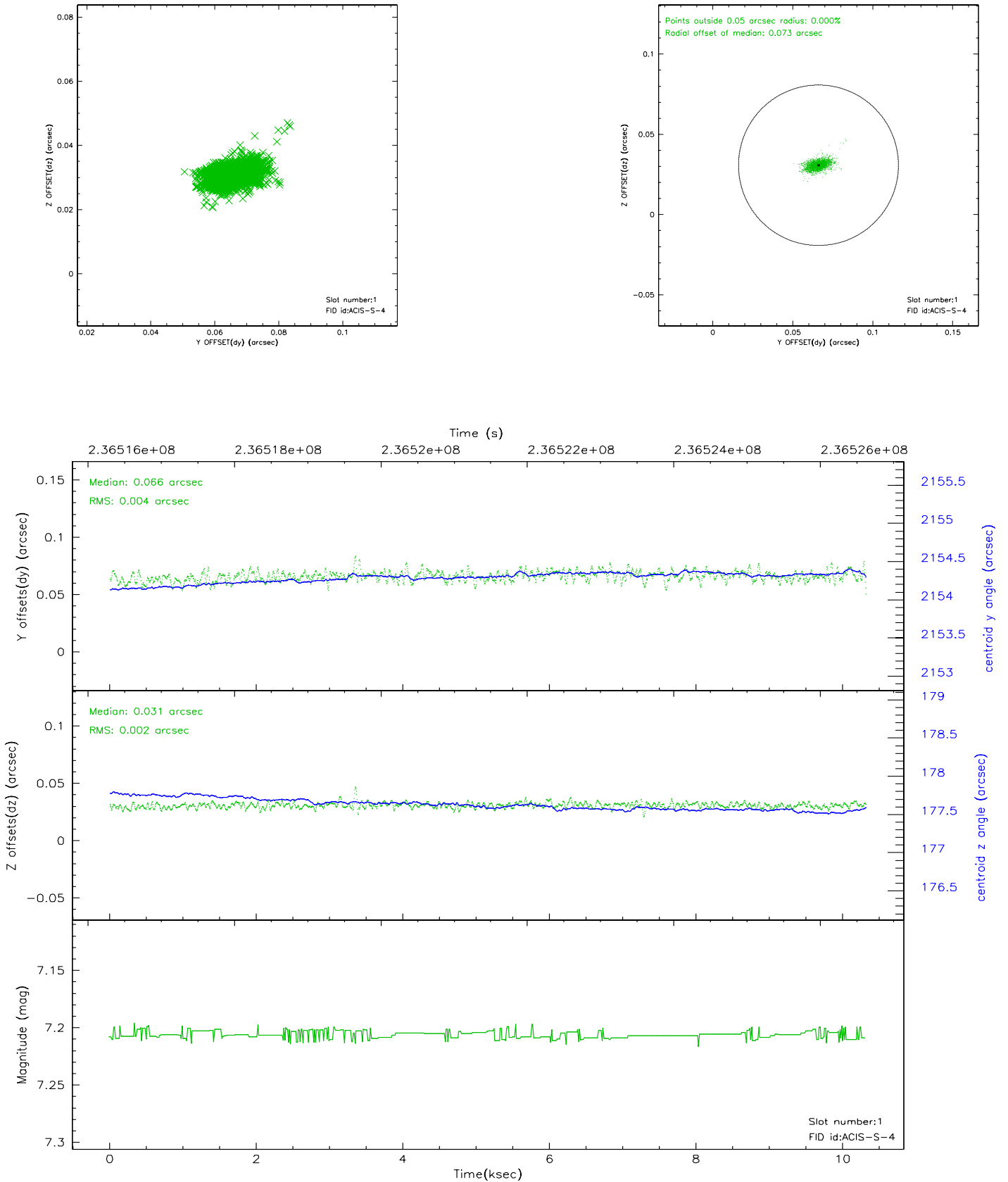


2.5 FID Slots

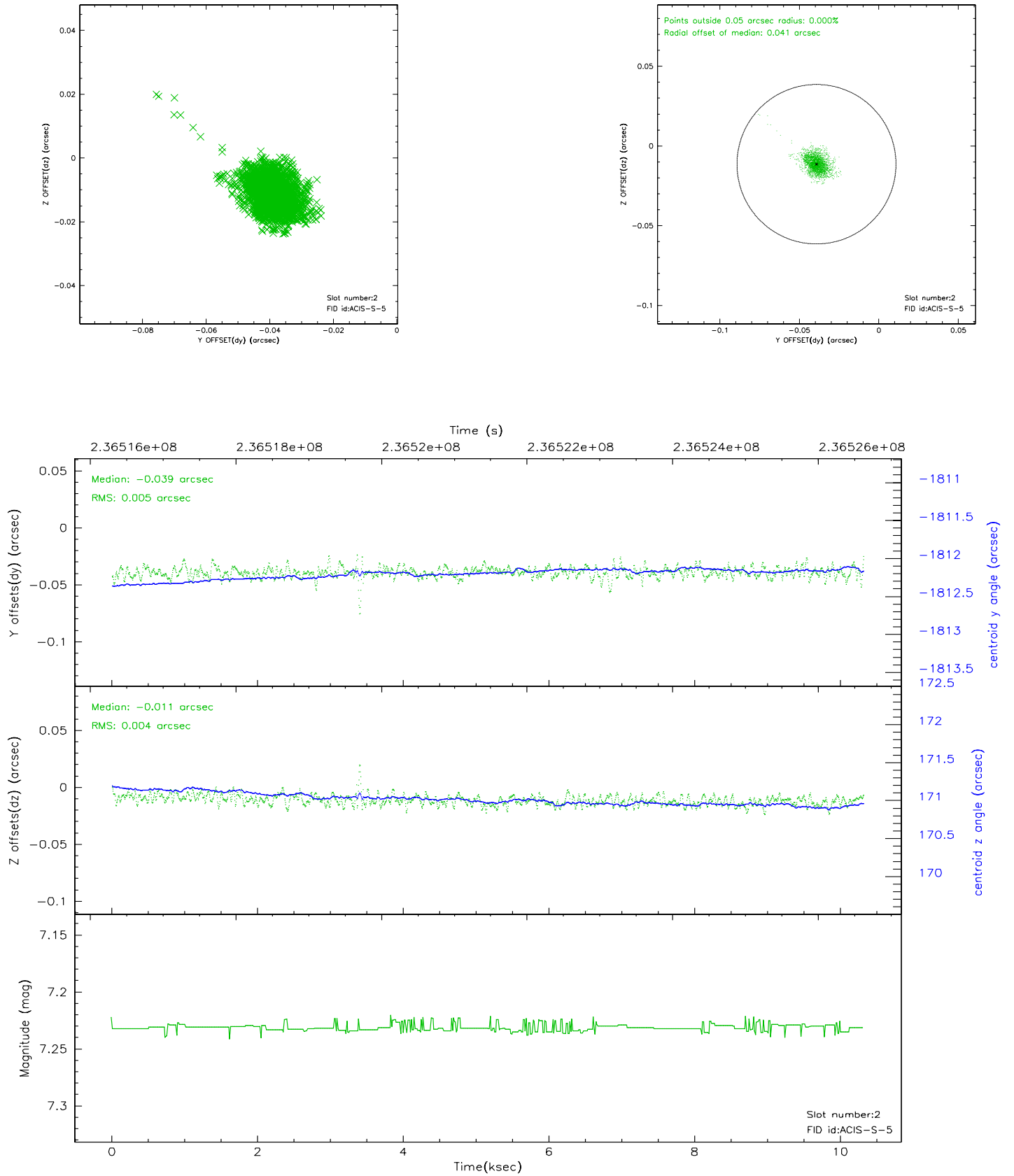
2.5.1 Slot 0



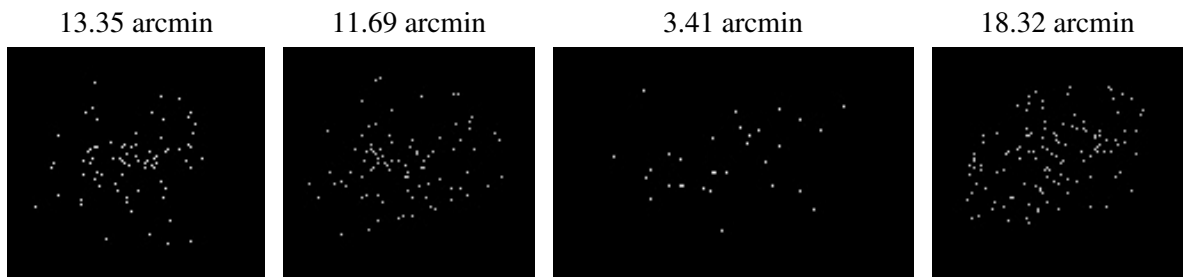
2.5.2 Slot 1



2.5.3 Slot 2



3 Point Sources



A Summary

A.1 Status

V&V Scientist	Beth Sundheim
V&V Date (YYYY-MM-DD)	2006.03.13
V&V Edition	1
V&V Disposition and Status	OK
V&V Charge Time	9.961599

A.2 Comments

Comments for Obi 0

Star in slot 6 has an RMS deviation > 0.200000 arcsec (but is within spec.)

Focal plane temperature is elevated during entire observation.
Calibration may be affected.