

V&V Reference Report

L2 ASCDS Version : 7.6.7.1

Observation 5024 - L2 Version 001
Chandra X-Ray Center

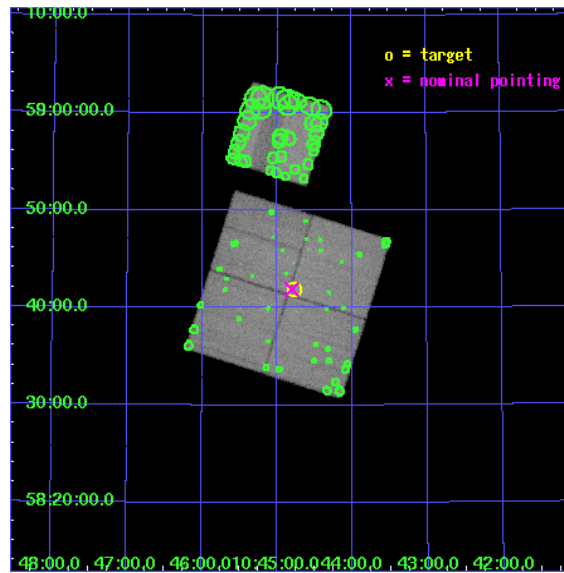
L2 Processing Date : Apr 17 2006

Contents

1	Front	2
2	OBI	3
2.1	OBI	3
2.1.1	Images	3
2.1.2	Bias	3
2.1.3	Parameters	4
2.1.4	Events	4
2.2	Compared Parameters	5
2.3	Aspect	6
2.4	Star Slots	9
2.4.1	Slot 3	9
2.4.2	Slot 4	10
2.4.3	Slot 5	11
2.4.4	Slot 6	12
2.4.5	Slot 7	13
2.5	FID Slots	14
2.5.1	Slot 0	14
2.5.2	Slot 1	15
2.5.3	Slot 2	16
3	Point Sources	17
A	Summary	18
A.1	Status	18
A.2	Comments	18

1 Front

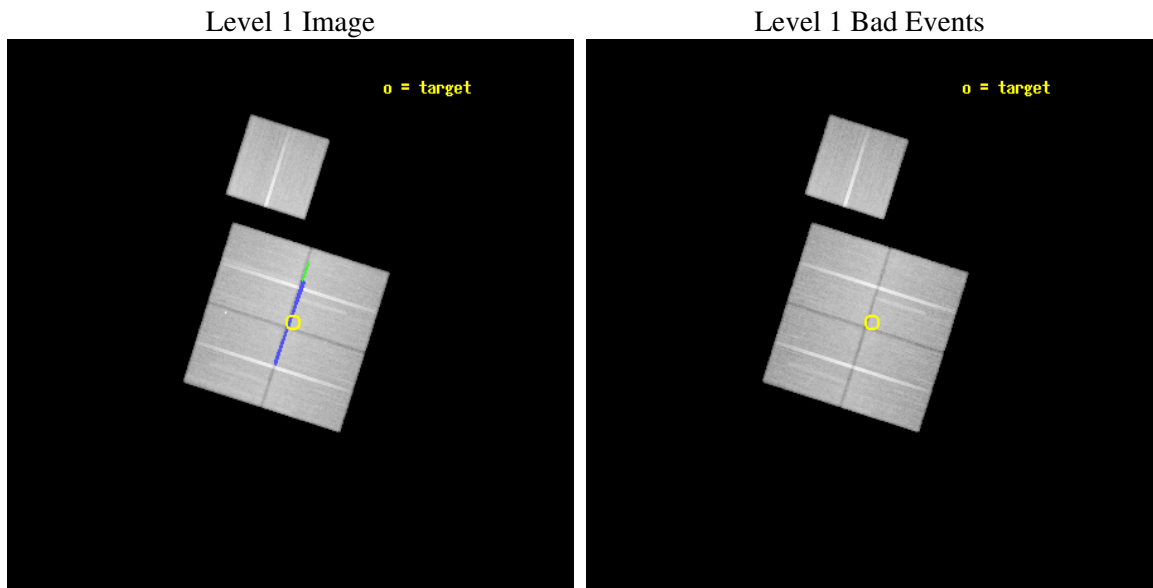
seq_num	900331
obs_id	5024
title	The Balance of Power between Starbursts and AGN: a Chandra/SIRTf Survey.
observer	Dr. BELINDA WILKES
object	SWIRE LOCKMAN 1
dtcycle	0
cycle	P
ra_targ	161.192292
dec_targ	58.698737
ra_nom	161.20114034396
dec_nom	58.698301016129
roll_nom	17.60112392331
revision	2
ontime	67175.592436373
livetime	66297.89386724
ontime0	67181.874566466
ontime1	67169.310555756
ontime2	67147.323843807
ontime3	67175.592436373
ontime6	67188.15664652
l2events	403734



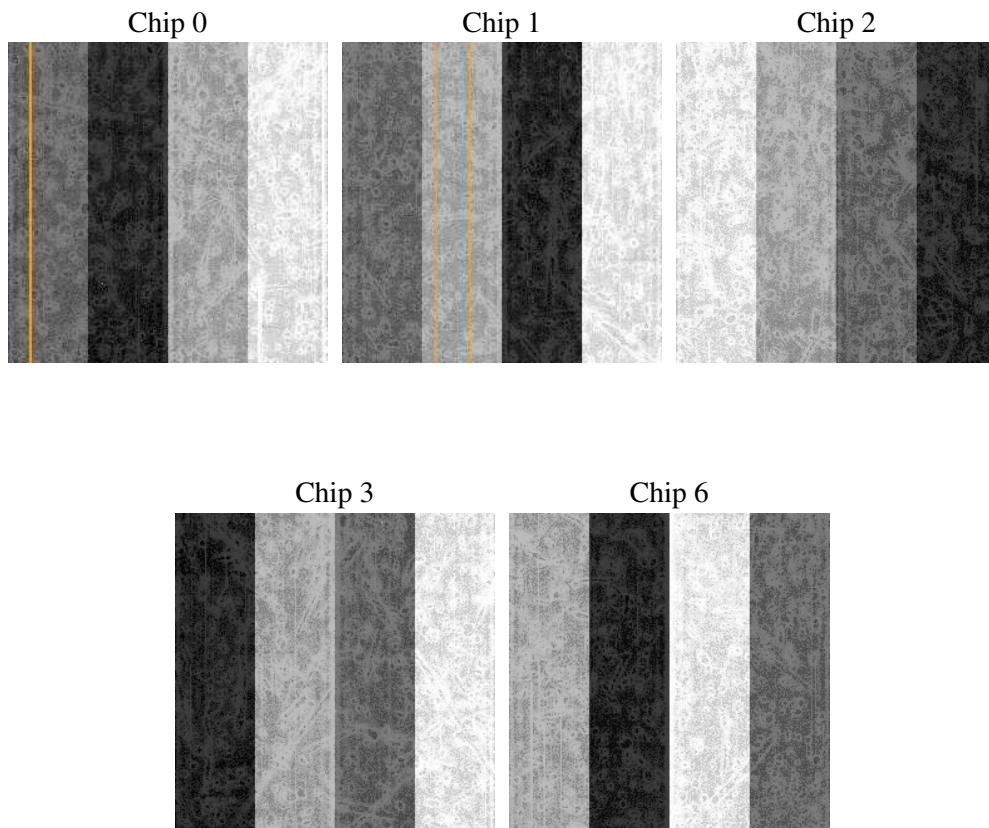
2 OBI

2.1 OBI

2.1.1 Images



2.1.2 Bias



2.1.3 Parameters

obi_num	1
ascdsver	7.6.7.1
caldsver	3.2.1
date	2006-04-17T18:00:11
revision	2

sched_exp_time	67381.115000
ontime	67562.965898812
ontime0	67572.389048964
ontime1	67556.684018195
ontime2	67534.697306246
ontime3	67562.965898812
ontime6	67575.530108958
l1events	2733842

2.1.4 Events

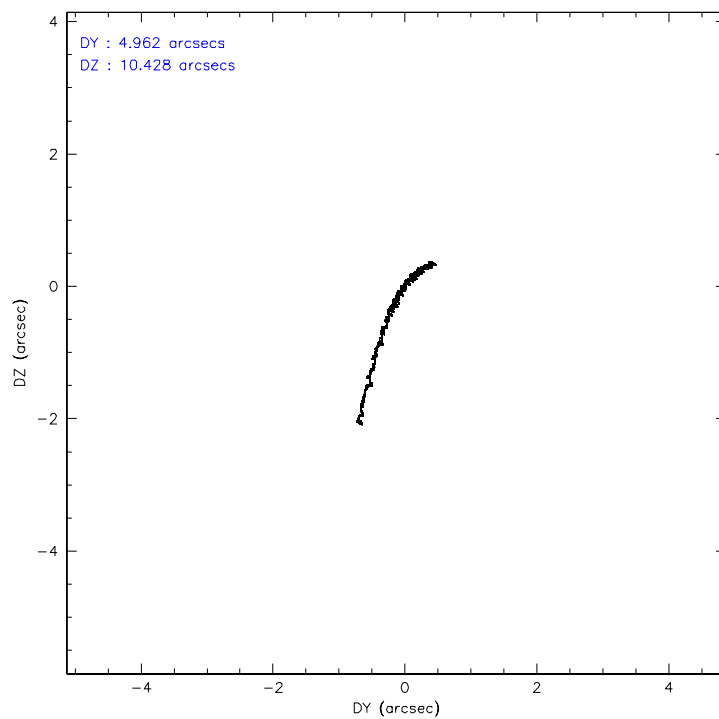
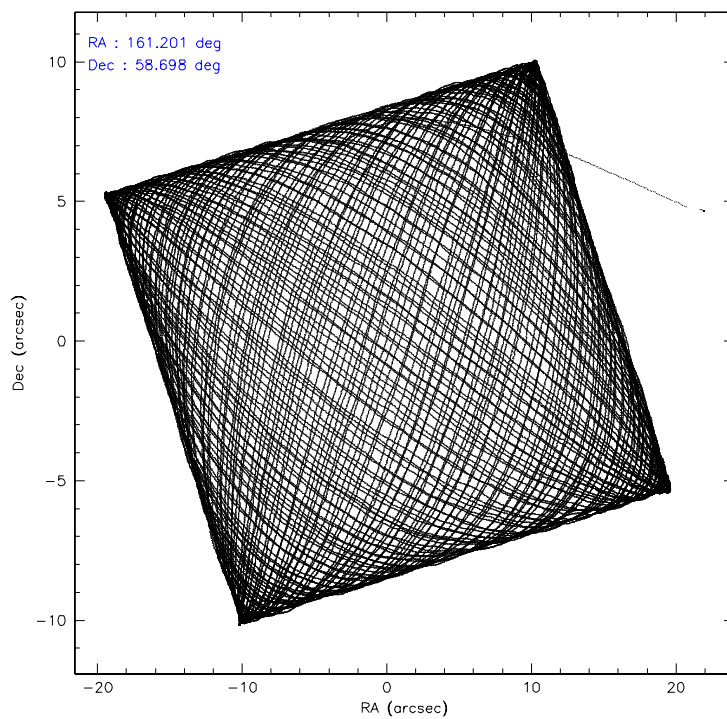
	ccd 0	ccd 1	ccd 2	ccd 3	ccd 6
level 1 events	511727	518902	577532	559707	565974
rejected events	417130	425092	480871	469827	469349
rejected %	81%	81%	83%	83%	82%

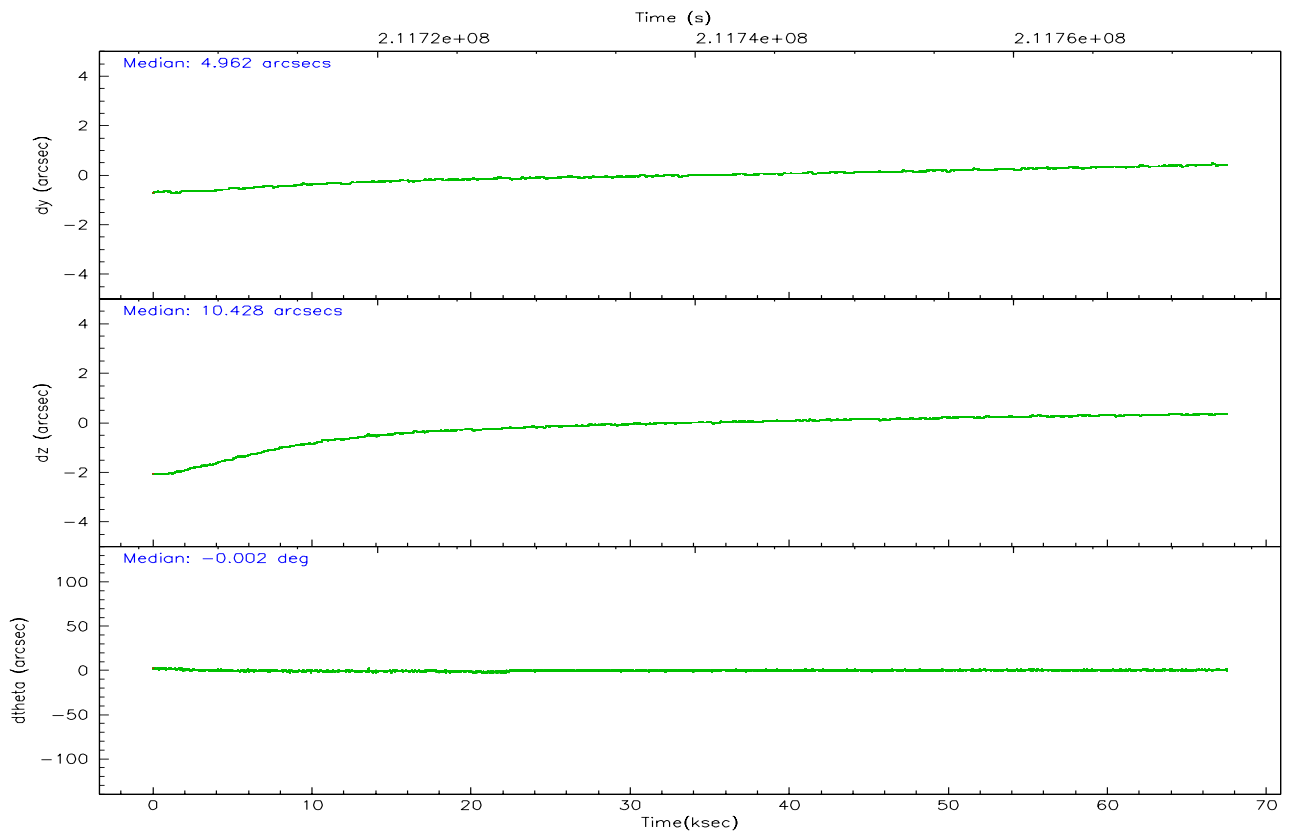
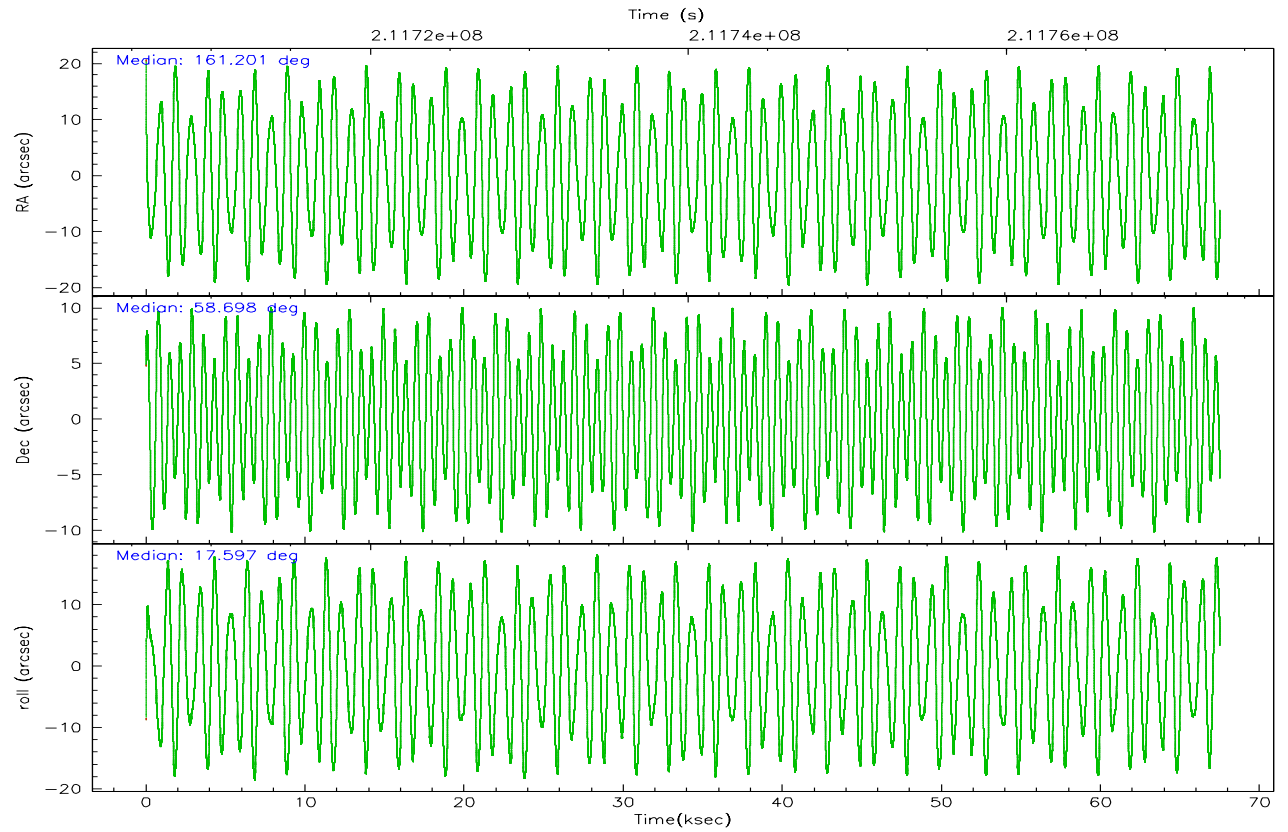
	ccd 0	ccd 1	ccd 2	ccd 3	ccd 6
grade 0 events	43684	38566	46981	41108	44055
	8%	7%	8%	7%	7%
grade 1 events	354	286	431	396	349
	0%	0%	0%	0%	0%
grade 2 events	23356	25152	21778	21113	24280
	4%	4%	3%	3%	4%
grade 3 events	6283	6541	6091	6209	6194
	1%	1%	1%	1%	1%
grade 4 events	6106	6467	7168	6236	6201
	1%	1%	1%	1%	1%
grade 5 events	19670	20271	18983	21753	21734
	3%	3%	3%	3%	3%
grade 6 events	15861	17723	15298	15834	16516
	3%	3%	2%	2%	2%
grade 7 events	396413	403896	460802	447058	446645
	77%	77%	79%	79%	78%

2.2 Compared Parameters

Parameter	Planned	Actual	Parameter	Planned	Actual
Instrument	ACIS	ACIS	Obspar format version number	6	6
Detector	ACIS-01236	ACIS-01236	Obspar file type	PREDICTED	ACTUAL
Grating	NONE	NONE	Obspar update status	NONE	UPDATED
Data mode	VFAINT	VFAINT	On-chip summing requested	N	N
Observation mode	POINTING	POINTING	Subarray requested	NONE	NONE
Pointing RA	161.165811	161.2011403439647	Alternating exposures requested	N	N
Pointing Dec	58.678005	58.69830101612916	Primary exposure time	0.000000	3.1
Pointing Roll	17.422620	17.60112392330993			
Roll angle	19.200000	19.200000			
Roll tolerance	1.800000	1.800000			
Roll constraint allows 180D rotation	Y	Y			
SIM focus pos (mm)	-0.782348	-0.7809083437167272			
SIM defocus (mm)	0	0.001439871863259334			
SIM translation stage pos (mm)	-233.592463	-233.5874344608287			
SIM translation stage offset (mm)	0	-0.005018542100998502			
Observation start time	211706056.184000	211704890.86097			
Observation start date	2004-09-16T07:13:12	2004-09-16T06:54:50			
Observation end time	211773437.184000	211773672.97654			
Observation end date	2004-09-17T01:56:13	2004-09-17T02:01:12			
Read mode	TIMED	TIMED			

2.3 Aspect



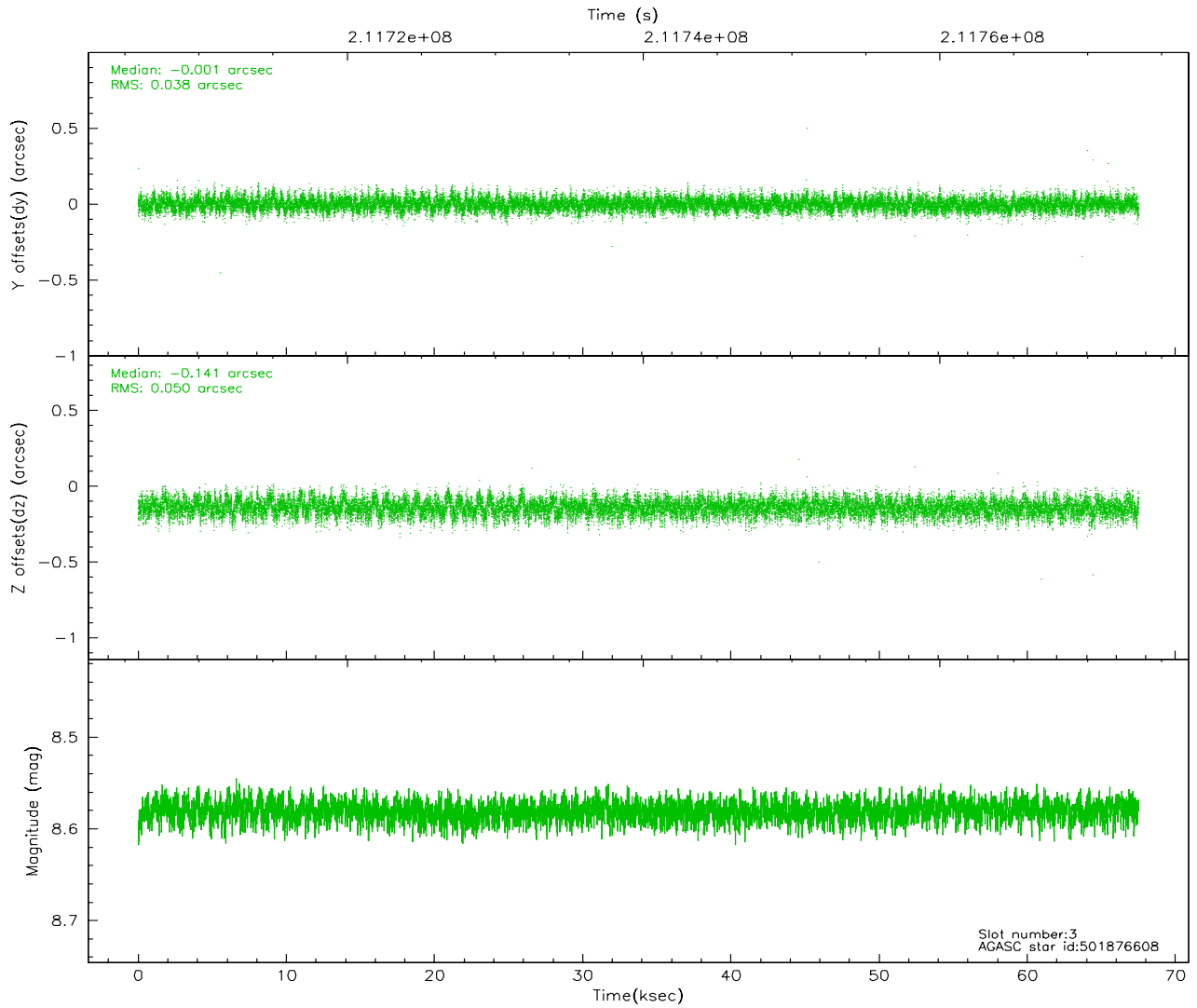
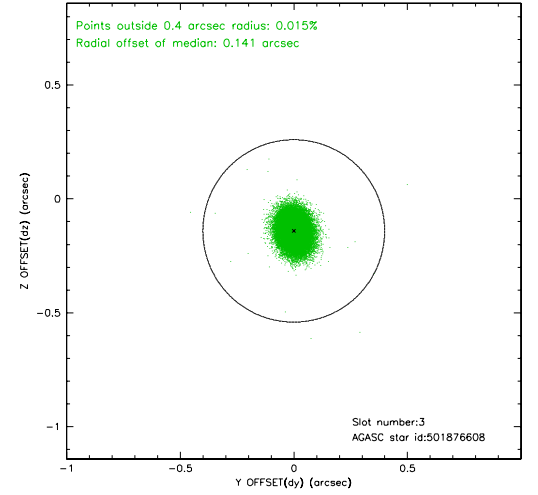
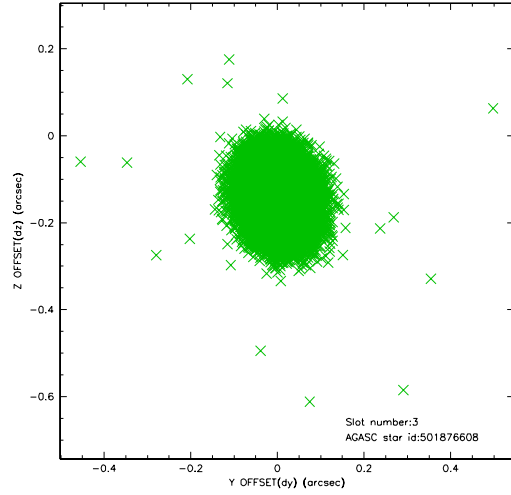


Slot Statistics

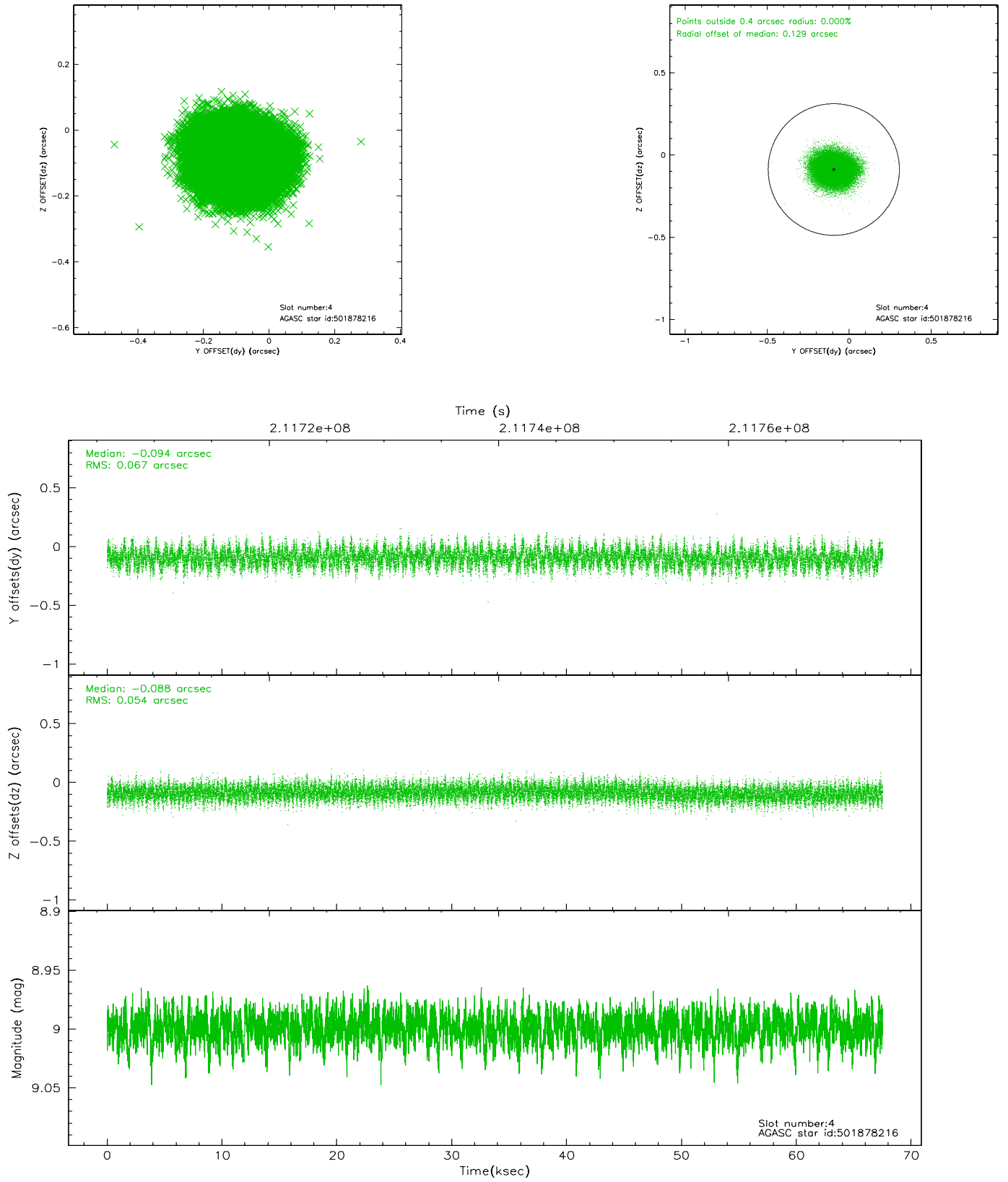
slot	status	id	mag	n_pts	med_dy	med_dz	dr1	dr2	ra	dec	mean_y	mean_z
0	FID	ACIS-I-1	7.24	16471	-0.008	-0.004	0.019	0.054	0.000000	0.000000	934.81	-833.68
1	FID	ACIS-I-4	7.18	16471	0.050	0.029	0.034	0.055	0.000000	0.000000	2154.87	1066.18
2	FID	ACIS-I-5	7.22	16471	-0.143	0.045	0.031	0.042	0.000000	0.000000	-1813.40	1063.96
3	GUIDE	501876608	8.58	32930	-0.001	-0.141	0.066	0.108	161.204341	58.717464	111.29	113.91
4	GUIDE	501878216	9.00	32923	-0.094	-0.088	0.092	0.147	161.663048	59.249982	1490.90	1693.99
5	GUIDE	501882776	8.23	32933	0.072	0.186	0.075	0.115	160.771087	57.955821	-1496.62	-2252.72
6	GUIDE	501882320	9.08	32926	0.125	0.117	0.097	0.154	160.706735	57.955502	-1614.23	-2216.29
7	GUIDE	501878576	7.83	32930	-0.101	-0.078	0.055	0.087	161.532118	59.060873	1060.18	1113.89

2.4 Star Slots

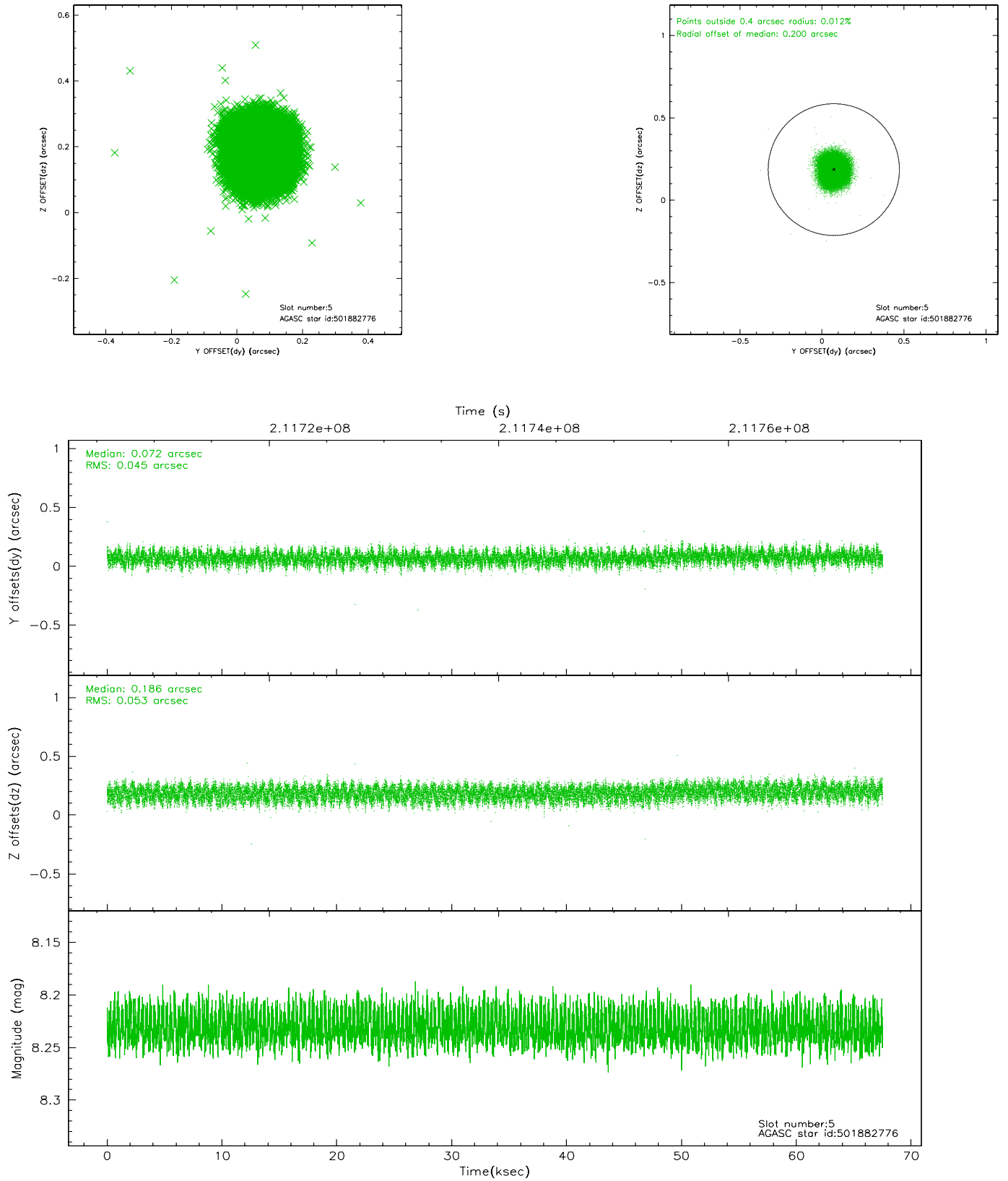
2.4.1 Slot 3



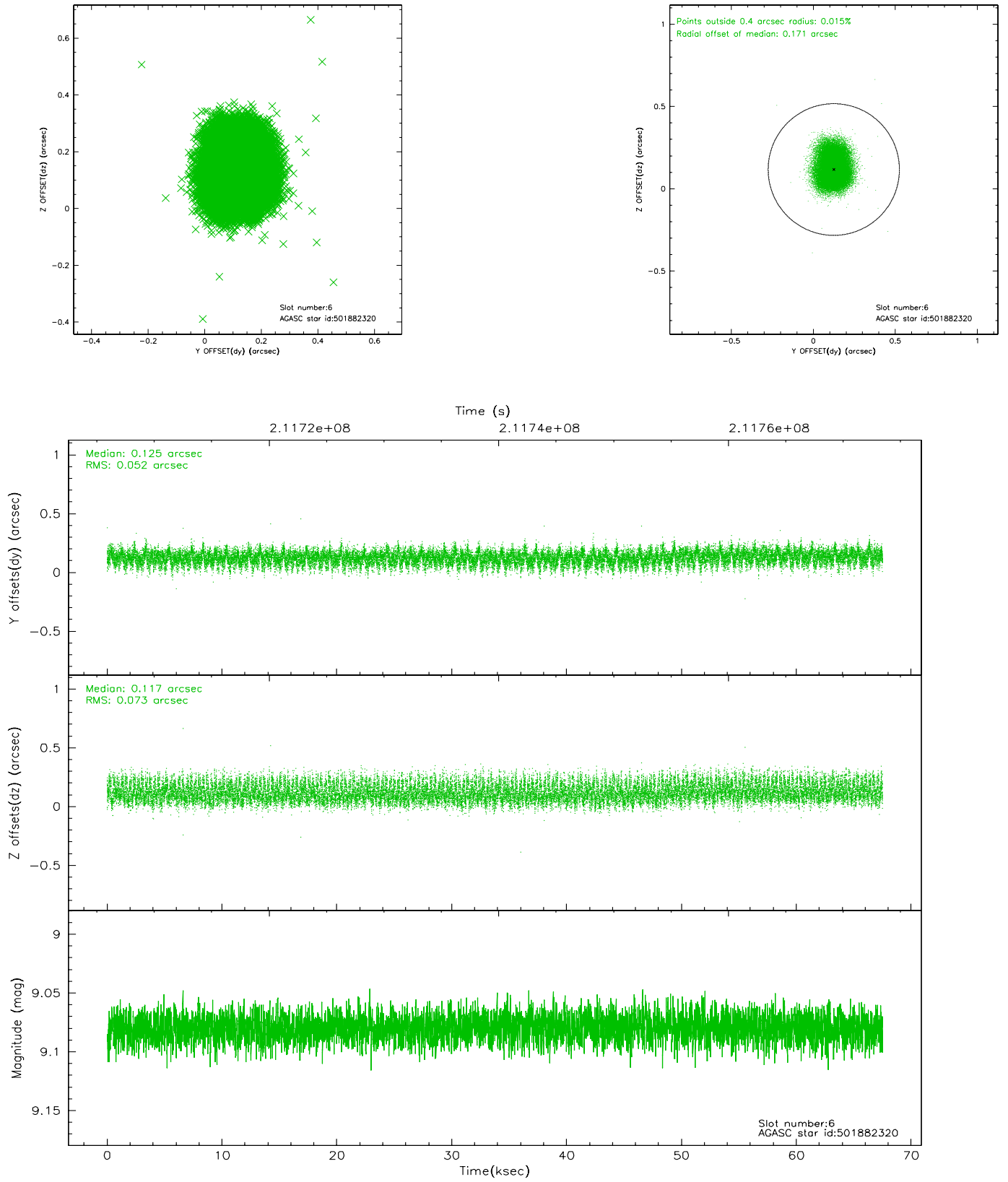
2.4.2 Slot 4



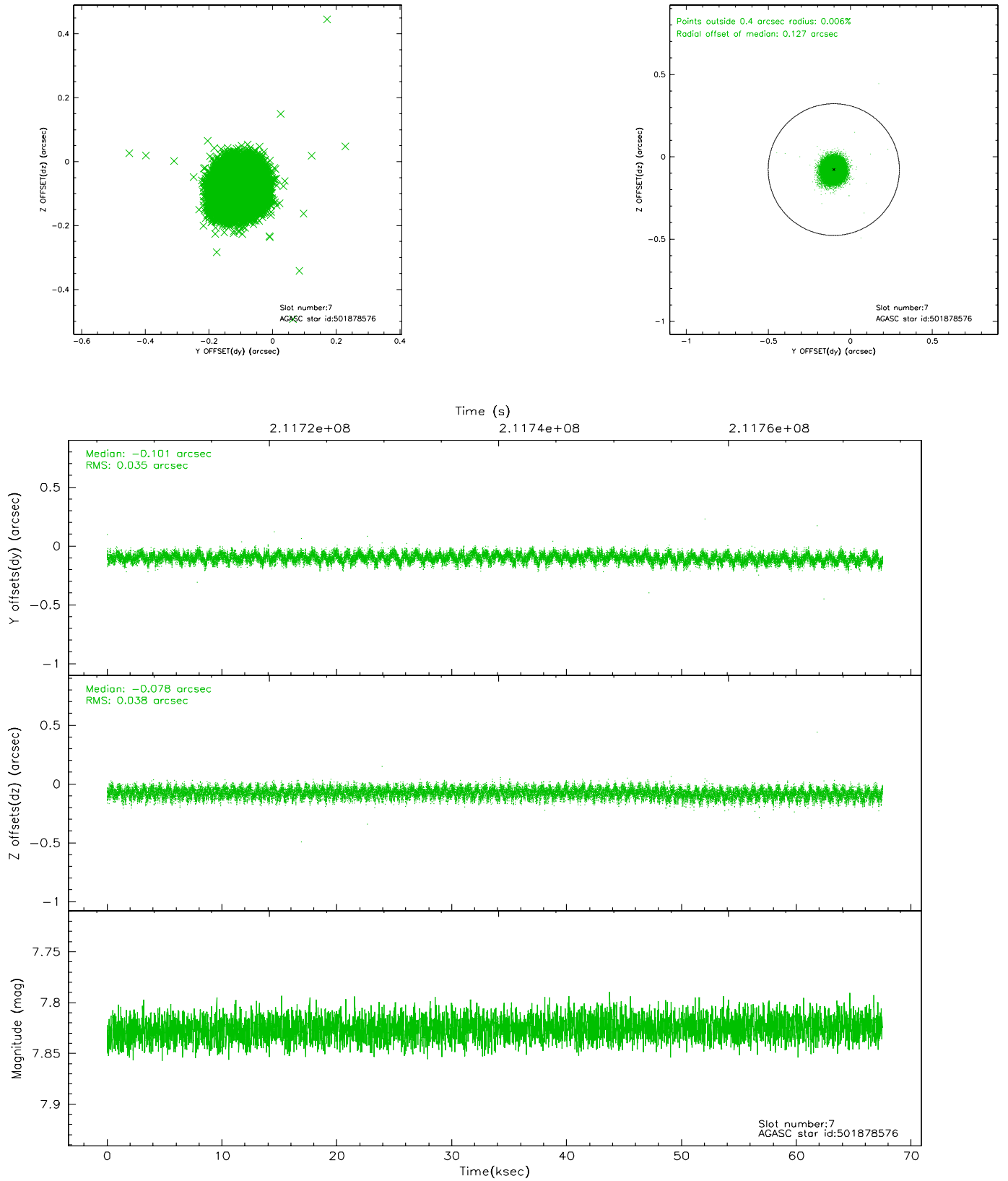
2.4.3 Slot 5



2.4.4 Slot 6

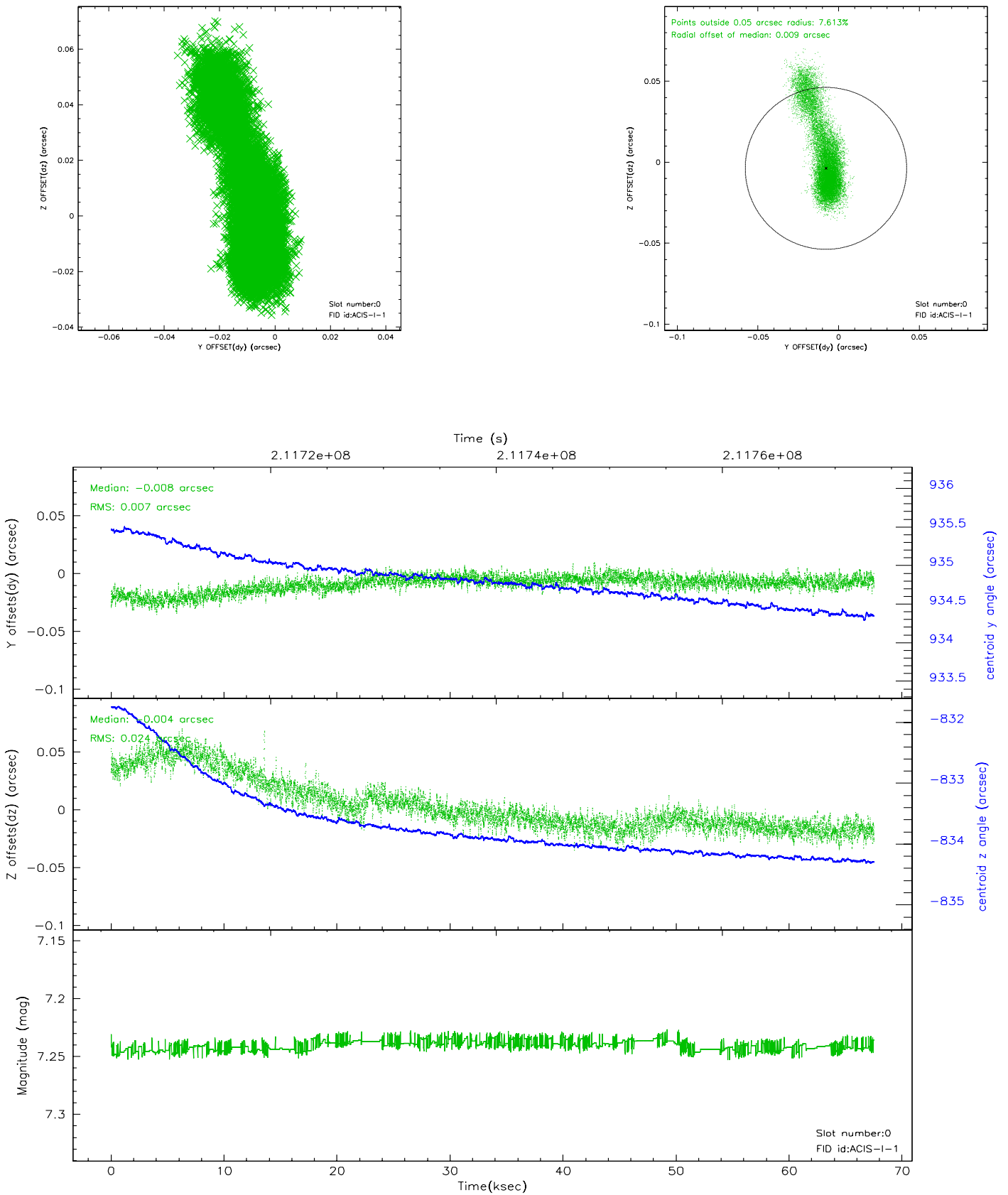


2.4.5 Slot 7

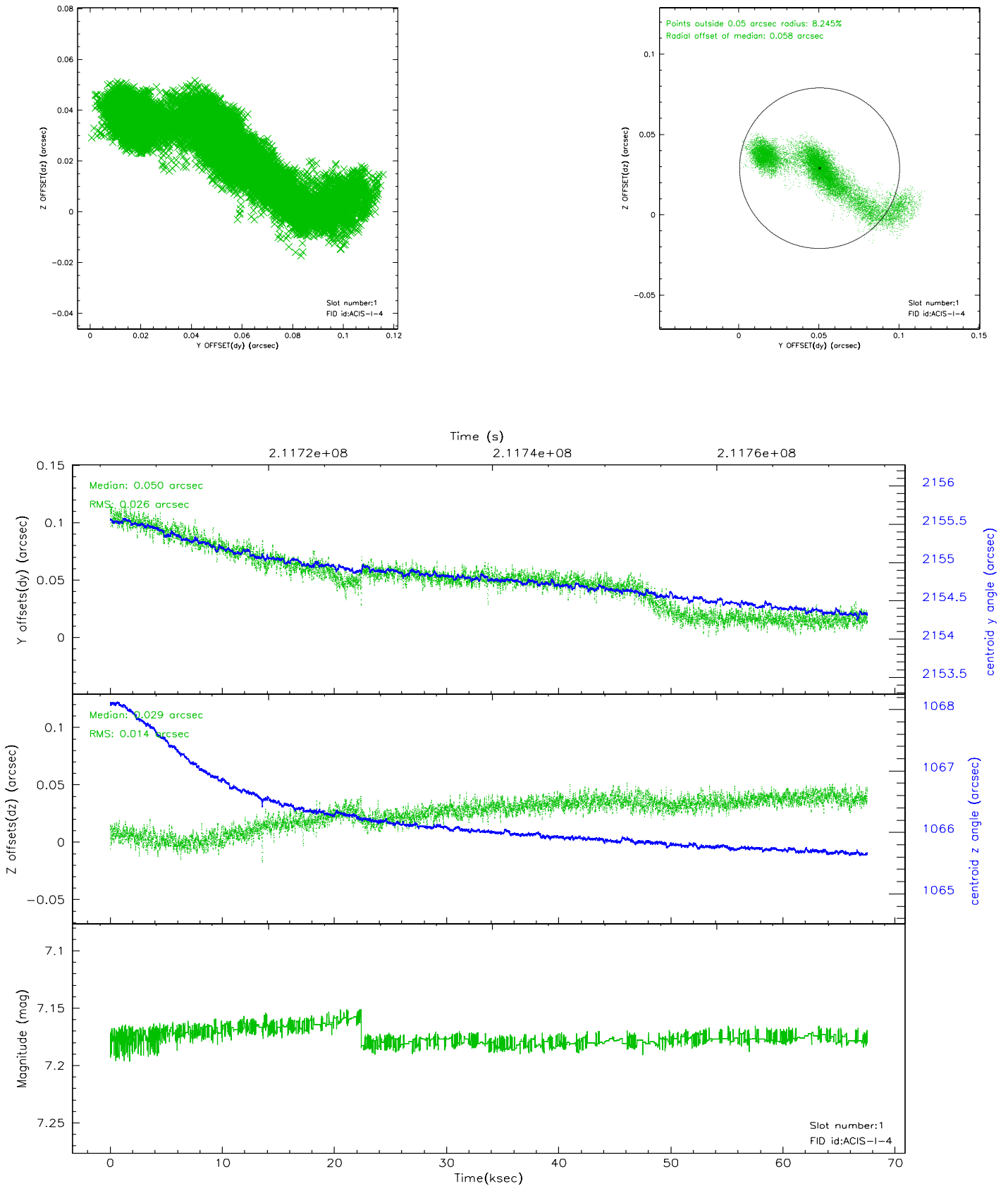


2.5 FID Slots

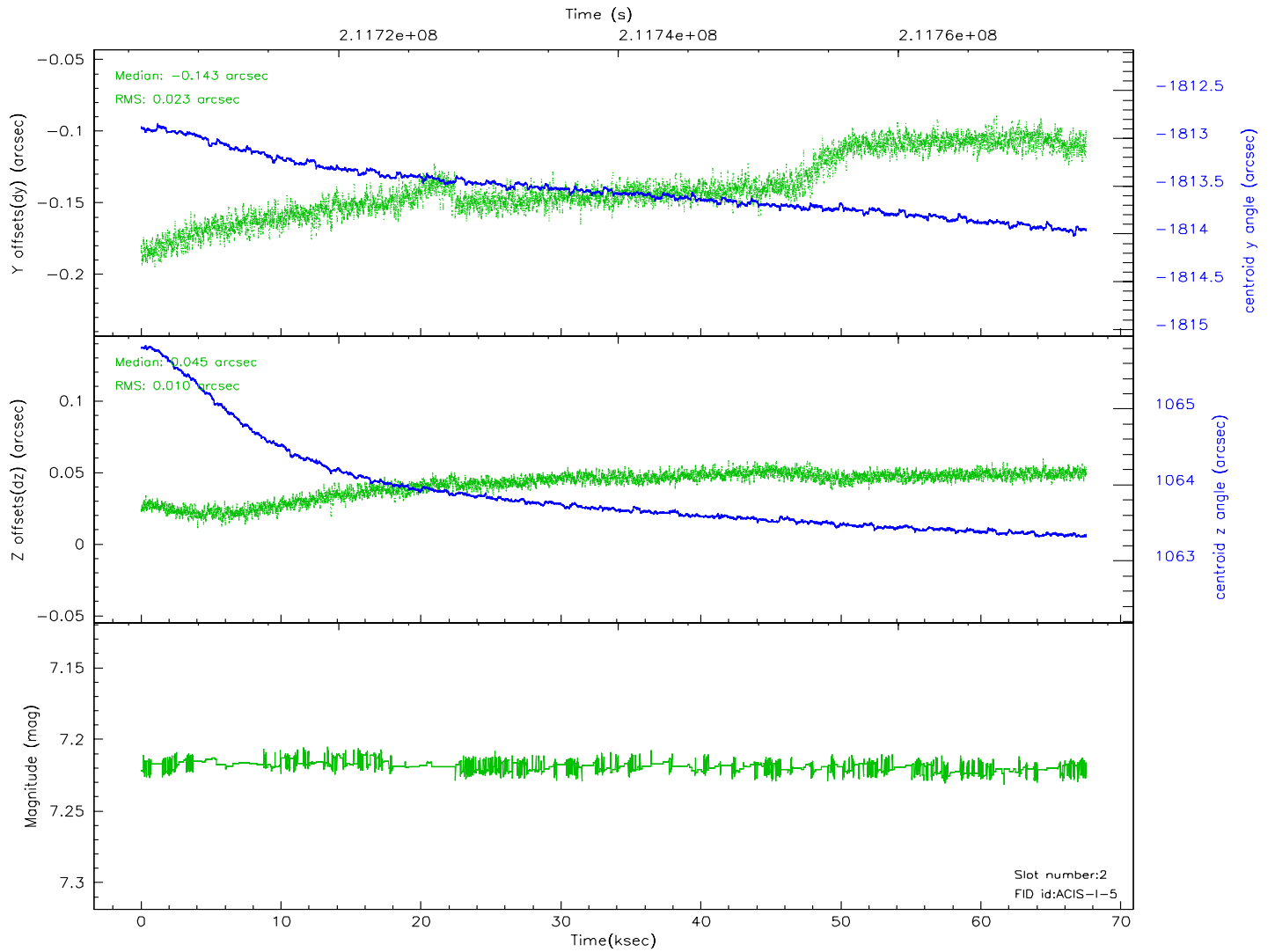
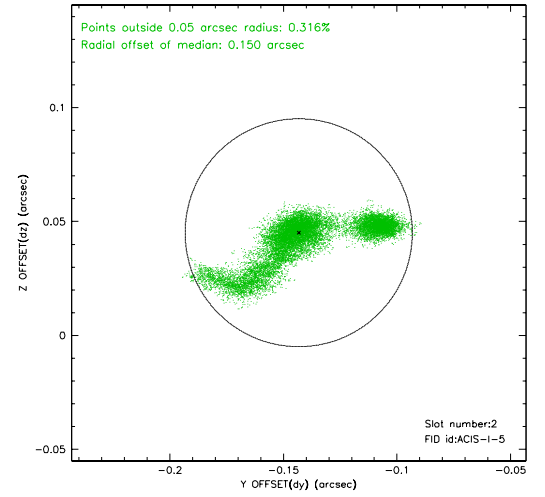
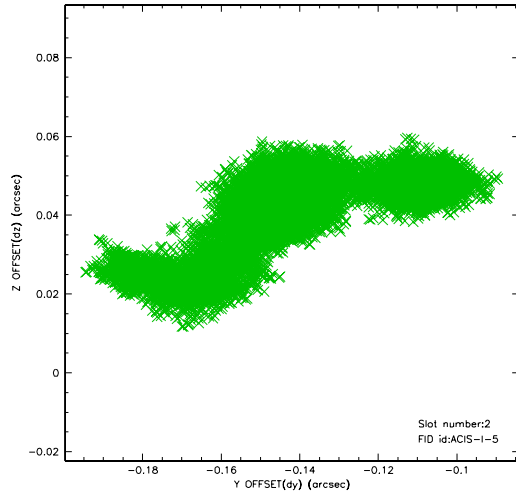
2.5.1 Slot 0



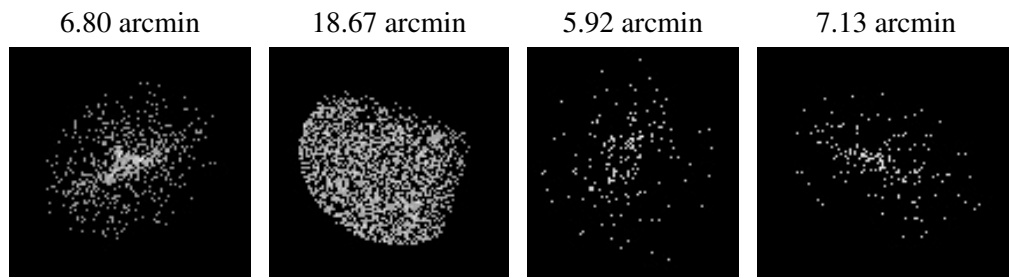
2.5.2 Slot 1



2.5.3 Slot 2



3 Point Sources



A Summary

A.1 Status

V&V Scientist	Jen Lauer
V&V Date (YYYY-MM-DD)	2006.04.18
V&V Edition	1
V&V Disposition and Status	OK
V&V Charge Time	67.175

A.2 Comments

Roll constraint met.