

V&V Reference Report

L2 ASCDS Version : 7.6.7.1

Observation 6145 - L2 Version 001
Chandra X-Ray Center

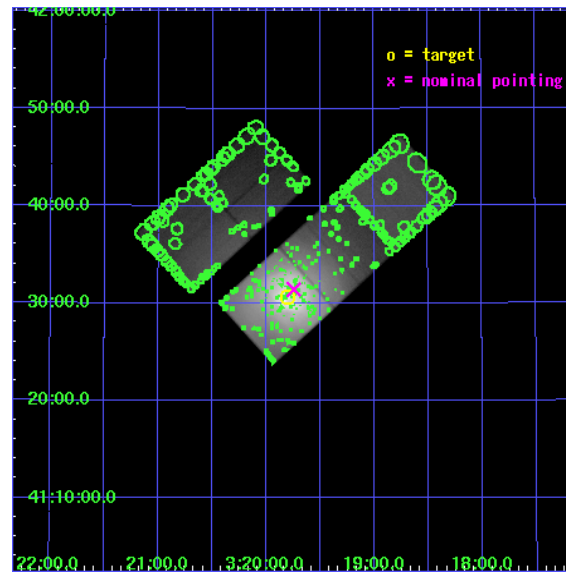
L2 Processing Date : Apr 15 2006

Contents

1	Front	2
2	OBI	3
2.1	OBI	3
2.1.1	Images	3
2.1.2	Bias	3
2.1.3	Parameters	4
2.1.4	Events	4
2.2	Compared Parameters	5
2.3	Aspect	6
2.4	Star Slots	9
2.4.1	Slot 3	9
2.4.2	Slot 4	10
2.4.3	Slot 5	11
2.4.4	Slot 6	12
2.4.5	Slot 7	13
2.5	FID Slots	14
2.5.1	Slot 0	14
2.5.2	Slot 1	15
2.5.3	Slot 2	16
3	Point Sources	17
A	Summary	18
A.1	Status	18
A.2	Comments	18

1 Front

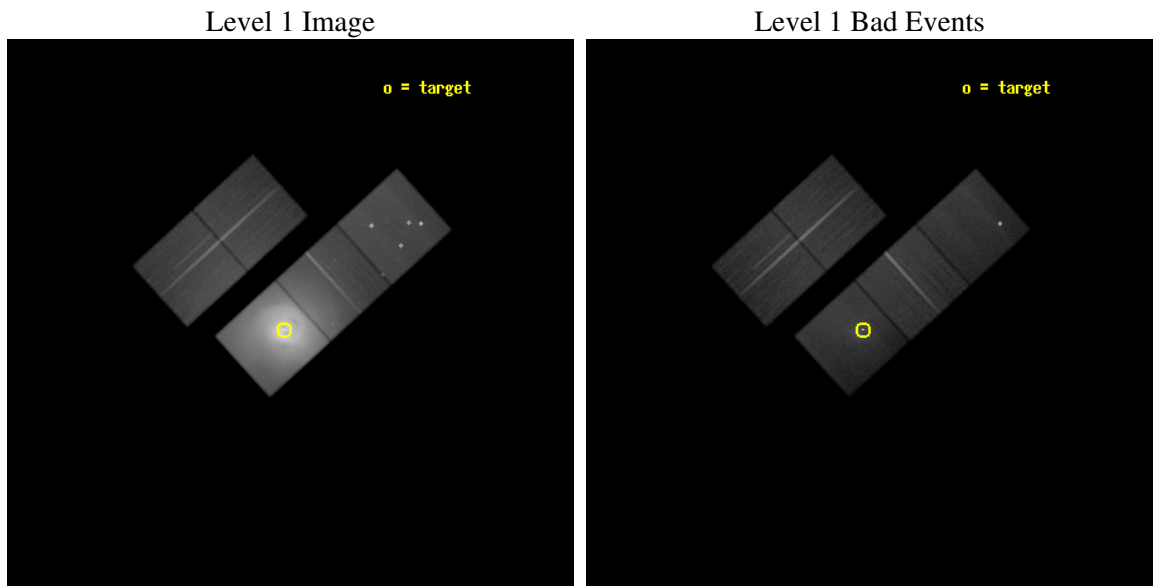
seq_num	800397
obs_id	6145
title	A Megasecond Image of the Core of the Perseus Cluster
observer	Prof Andrew Fabian
object	Abell 426
dtcycle	0
cycle	P
ra_targ	49.950833
dec_targ	41.511722
ra_nom	49.936069864021
dec_nom	41.524091546431
roll_nom	137.69794464366
revision	2
ontime	86127.2998344
livetime	85001.983256068
ontime2	86124.158844143
ontime3	86121.017854005
ontime5	86127.2998344
ontime6	86127.2998344
ontime7	86127.2998344
l2events	8428095



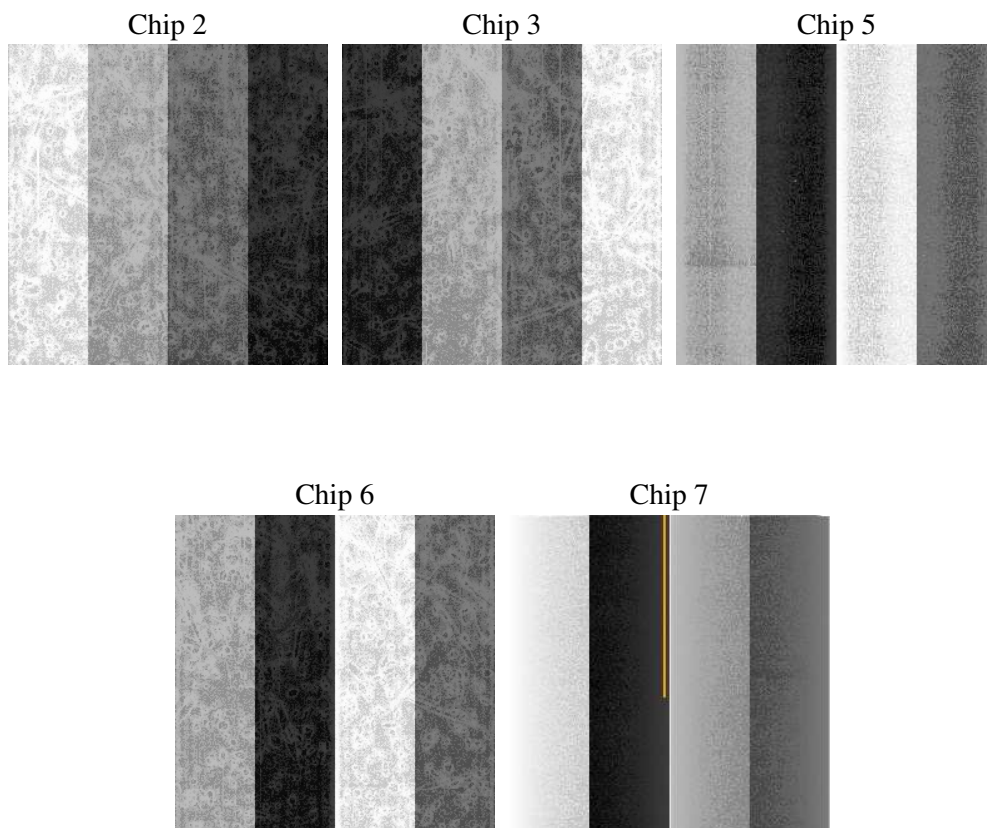
2 OBI

2.1 OBI

2.1.1 Images



2.1.2 Bias



2.1.3 Parameters

obi_num	0
ascdsver	7.6.7.1
caldbver	3.2.1
date	2006-04-15T12:20:26
revision	2

sched_exp_time	86000.000000
ontime	86657.392358452
ontime2	86654.251368195
ontime3	86651.110378057
ontime5	86657.392358452
ontime6	86657.392358452
ontime7	86657.392358452
l1events	11218421

2.1.4 Events

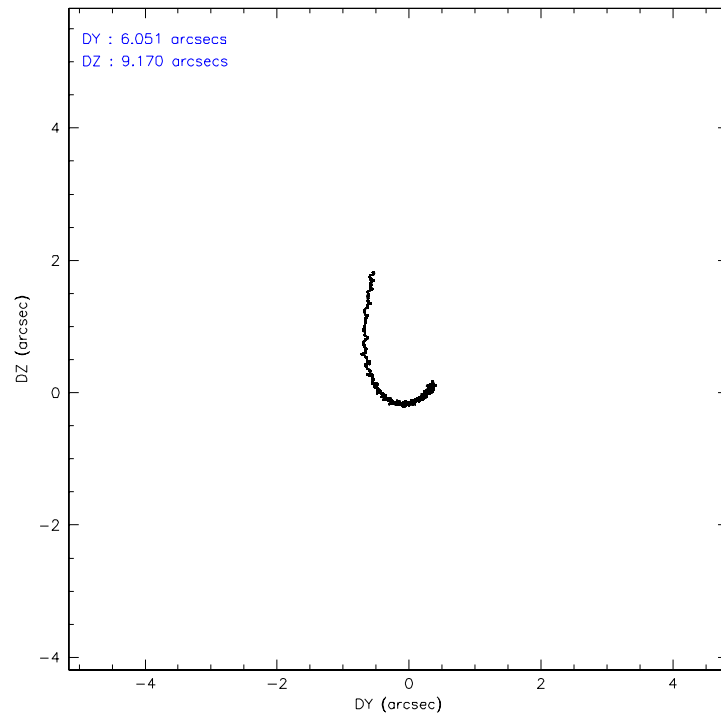
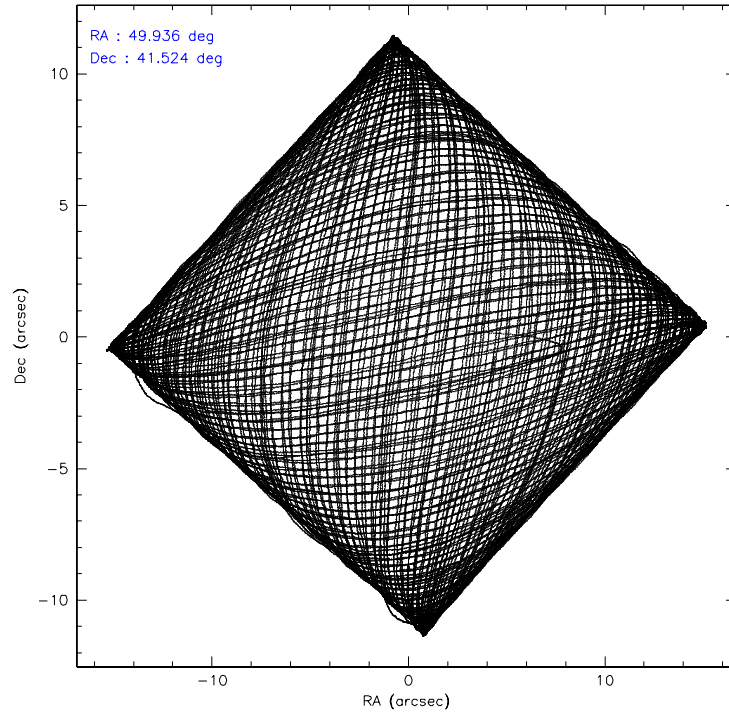
	ccd 2	ccd 3	ccd 5	ccd 6	ccd 7
level 1 events	781947	891171	976947	1472051	7096305
rejected events	554093	530799	435173	559567	499269
rejected %	70%	59%	44%	38%	7%

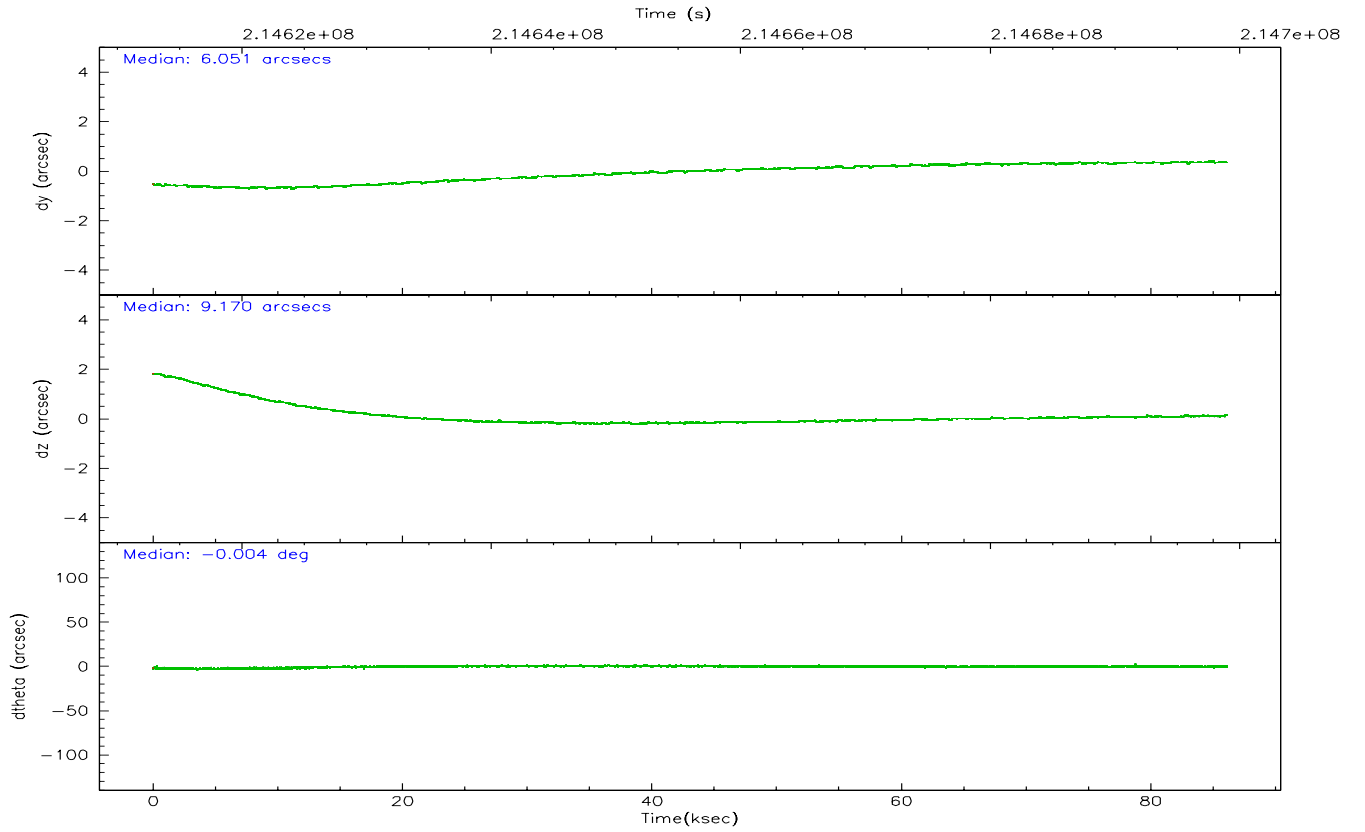
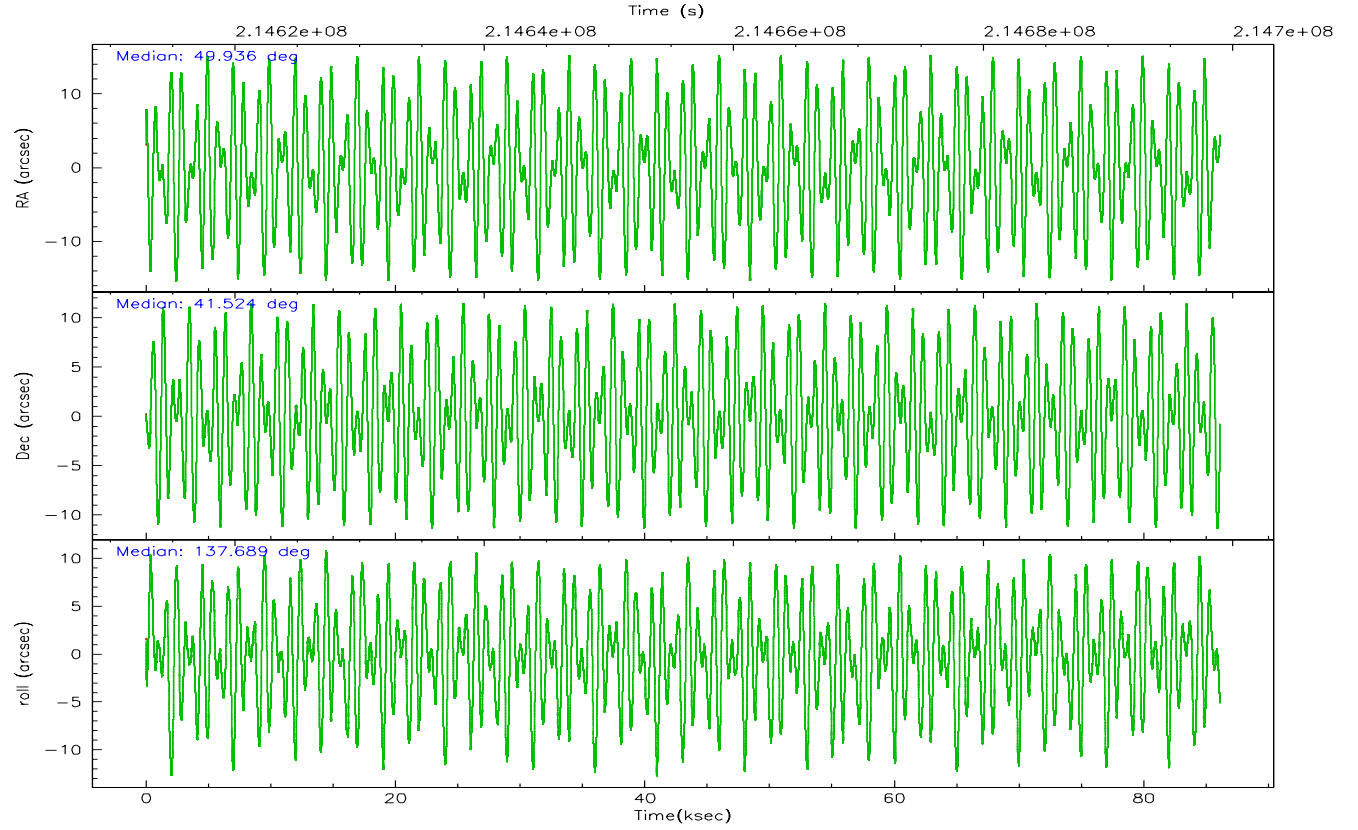
	ccd 2	ccd 3	ccd 5	ccd 6	ccd 7
grade 0 events	160260	267583	101247	709007	1635025
	20%	30%	10%	48%	23%
grade 1 events	1023	1669	340	3243	4044
	0%	0%	0%	0%	0%
grade 2 events	29961	42819	170518	101476	1896029
	3%	4%	17%	6%	26%
grade 3 events	11835	16278	18904	33258	712880
	1%	1%	1%	2%	10%
grade 4 events	11912	16147	17285	33368	697866
	1%	1%	1%	2%	9%
grade 5 events	19163	23401	43880	26041	98412
	2%	2%	4%	1%	1%
grade 6 events	14602	18584	236549	37749	1671424
	1%	2%	24%	2%	23%
grade 7 events	533191	504690	388224	527909	380625
	68%	56%	39%	35%	5%

2.2 Compared Parameters

Parameter	Planned	Actual	Parameter	Planned	Actual
Instrument	ACIS	ACIS	Obspar format version number	6	6
Detector	ACIS-23567	ACIS-23567	Obspar file type	PREDICTED	ACTUAL
Grating	NONE	NONE	Obspar update status	NONE	UPDATED
Data mode	FAINT	FAINT	On-chip summing requested	N	N
Observation mode	POINTING	POINTING	Subarray requested	NONE	NONE
Pointing RA	49.971694	49.93606986402119	Alternating exposures requested	N	N
Pointing Dec	41.518664	41.52409154643122	Primary exposure time	0.000000	3.1
Pointing Roll	137.517700	137.6979446436615			
SIM focus pos (mm)	-0.684267	-0.6828225247311905			
SIM defocus (mm)	0	0.001444936568705701			
SIM translation stage pos (mm)	-190.132523	-190.1425803651734			
SIM translation stage offset (mm)	0	0.01005778216563158			
Observation start time	214613012.184000	214611776.1284			
Observation start date	2004-10-19T22:42:28	2004-10-19T22:22:56			
Observation end time	214699012.184000	214699150.71981			
Observation end date	2004-10-20T22:35:48	2004-10-20T22:39:10			
Read mode	TIMED	TIMED			

2.3 Aspect



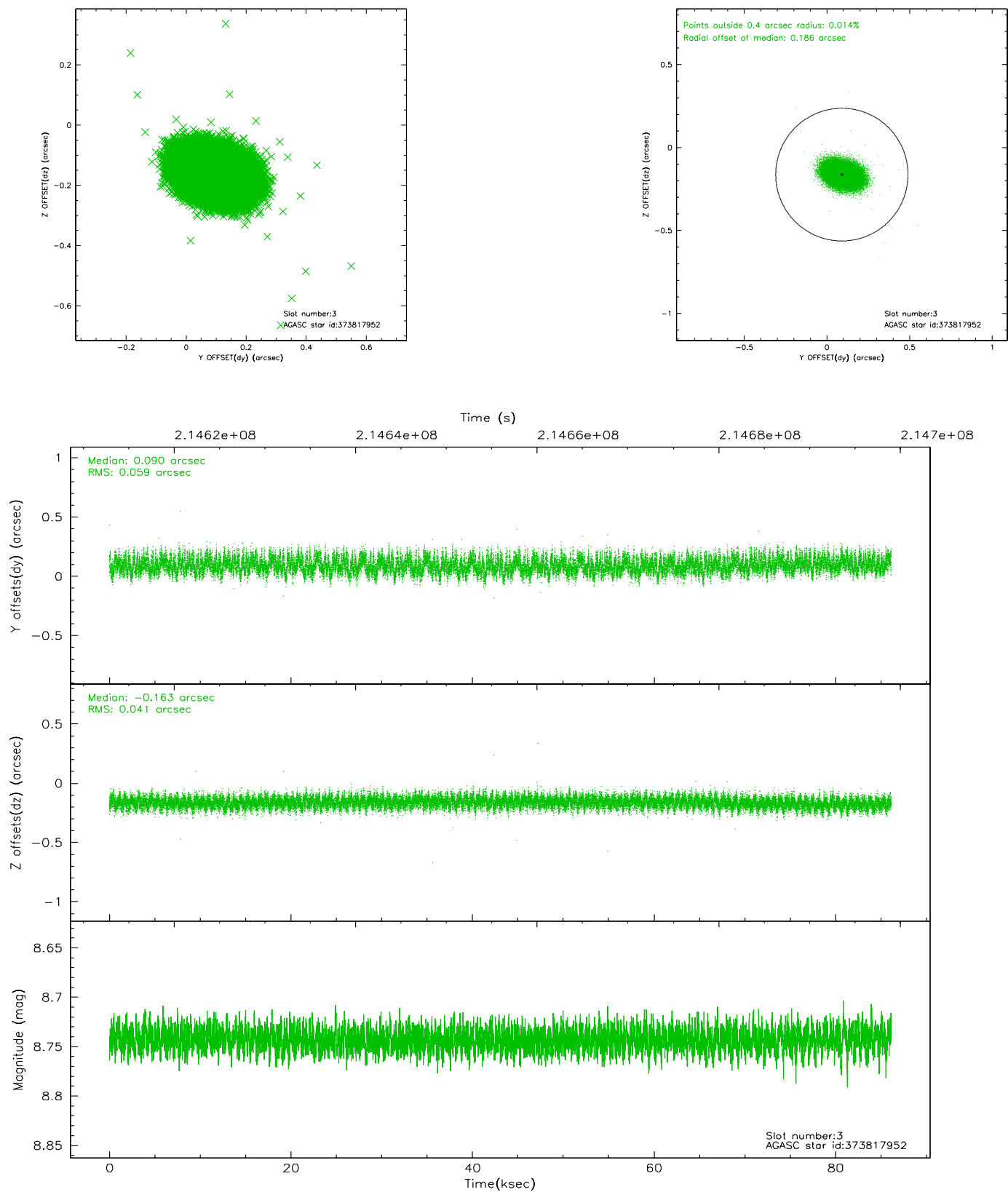


Slot Statistics

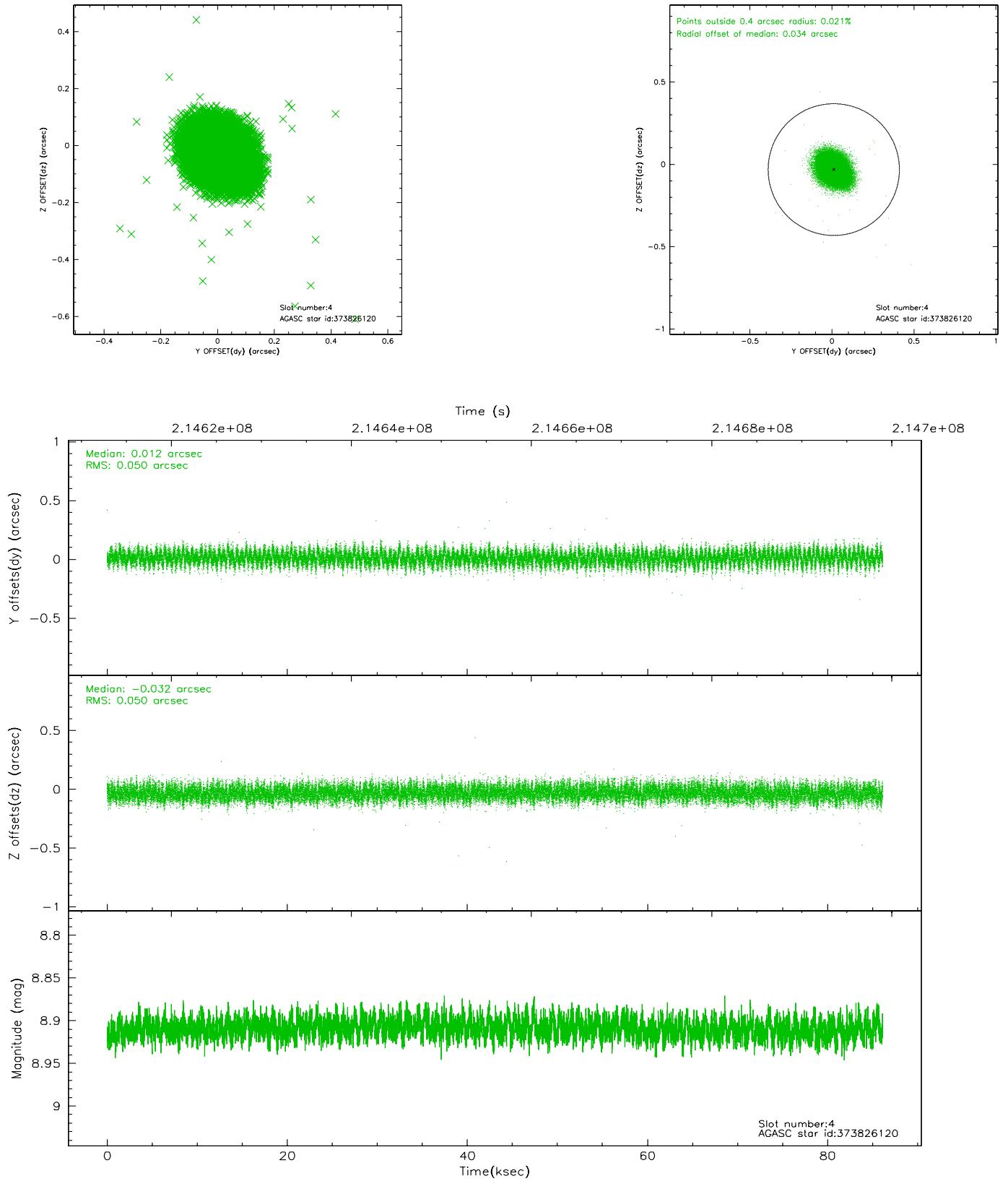
slot	status	id	mag	n_pts	med_dy	med_dz	dr1	dr2	ra	dec	mean_y	mean_z
0	FID	ACIS-S-2	7.10	21008	-0.045	-0.025	0.013	0.025	0.000000	0.000000	-758.72	-1730.52
1	FID	ACIS-S-4	7.21	21008	0.059	0.029	0.009	0.027	0.000000	0.000000	2154.68	178.11
2	FID	ACIS-S-5	7.23	21008	-0.043	0.005	0.014	0.023	0.000000	0.000000	-1811.67	171.64
3	GUIDE	373817952	8.74	41774	0.090	-0.163	0.076	0.124	49.913424	40.978510	-1196.45	1540.81
4	GUIDE	373826120	8.91	41998	0.012	-0.032	0.075	0.121	49.738165	41.186341	-340.78	1309.03
5	GUIDE	374357808	8.68	42002	-0.150	0.089	0.071	0.118	49.921429	42.176083	1697.58	-1654.46
6	GUIDE	376057824	8.36	42003	0.046	0.105	0.081	0.130	50.665569	41.926280	-374.08	-2342.69
7	GUIDE	374352576	9.71	41983	0.006	0.001	0.104	0.172	48.746850	41.454001	2295.75	2386.79

2.4 Star Slots

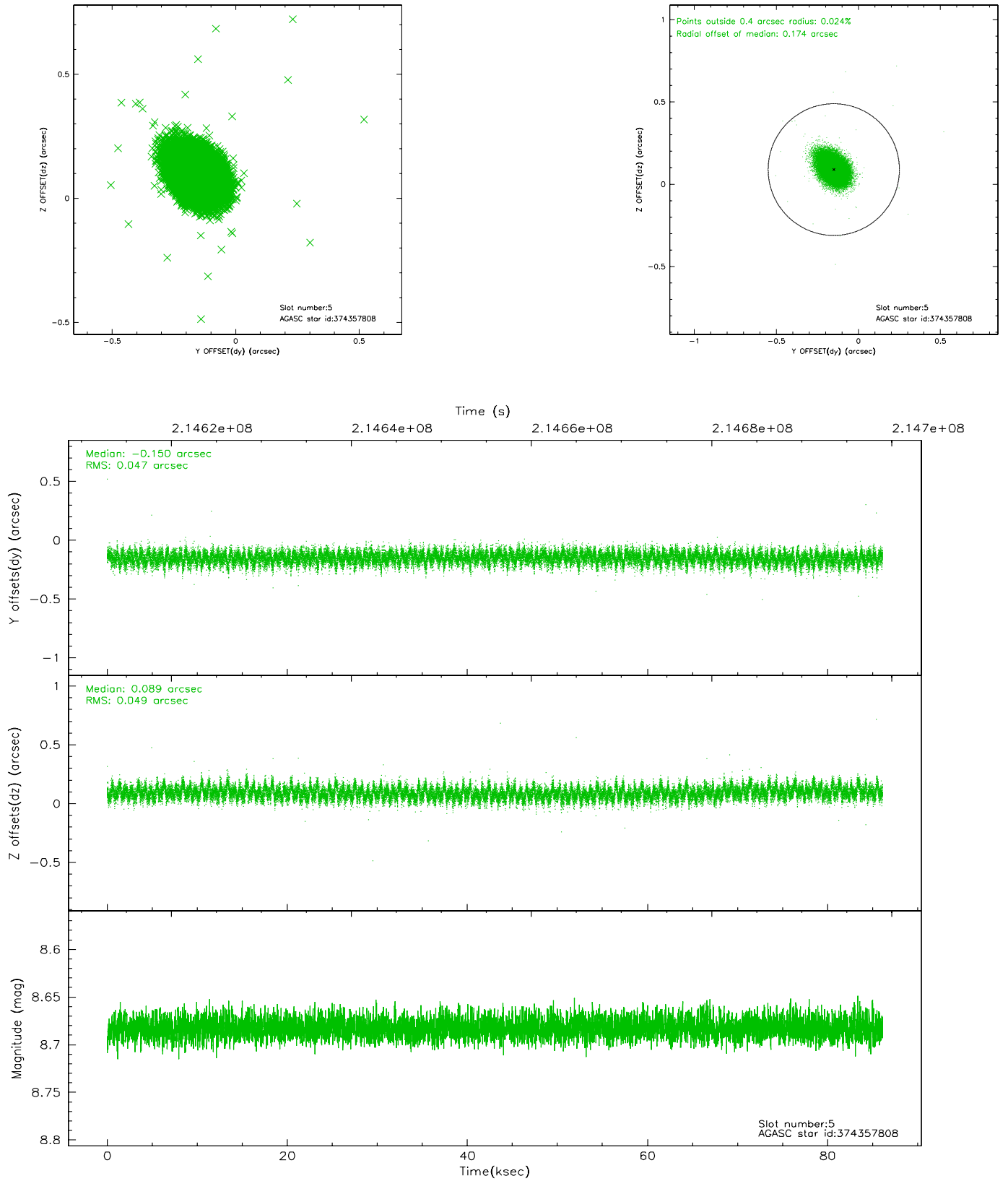
2.4.1 Slot 3



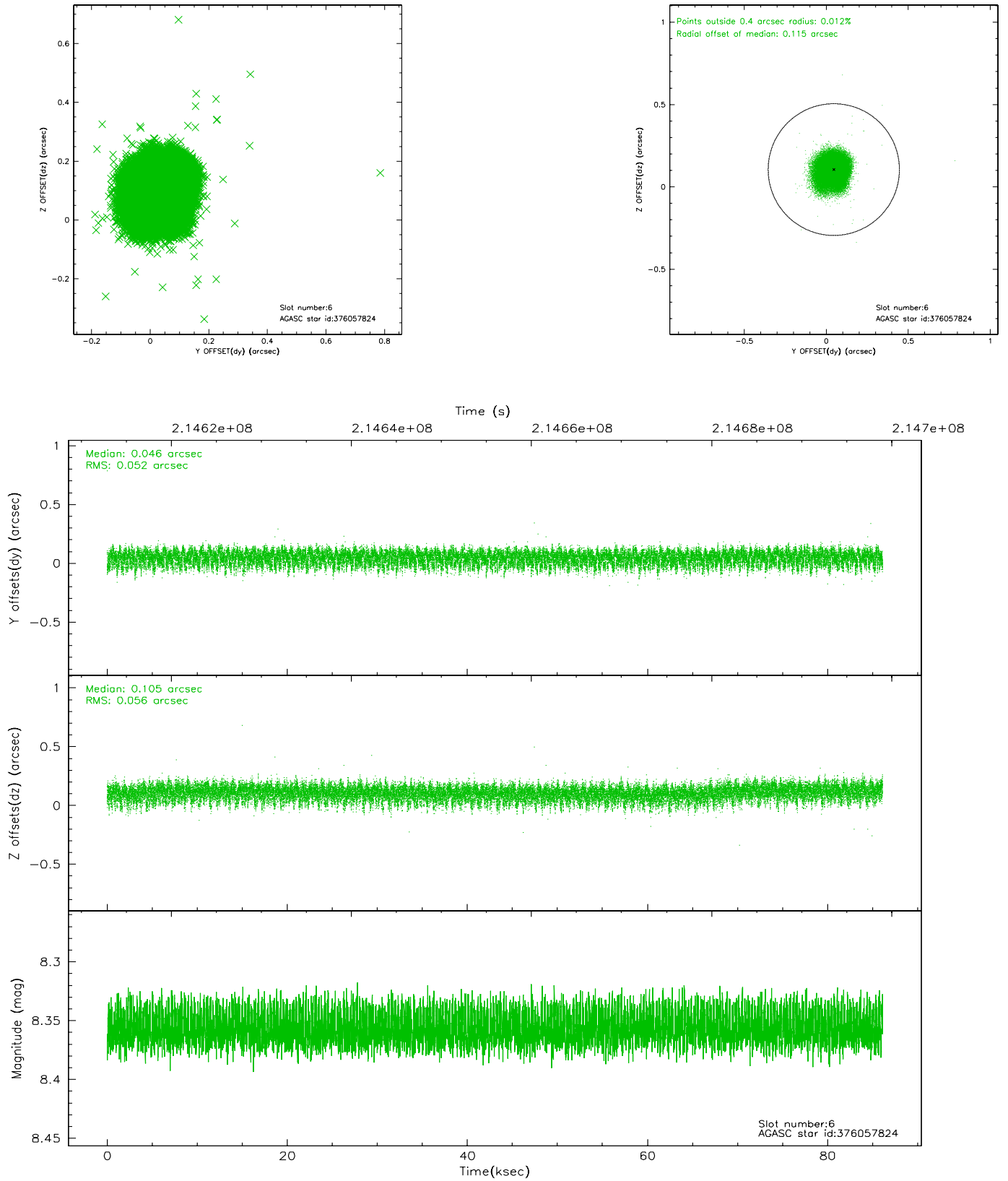
2.4.2 Slot 4



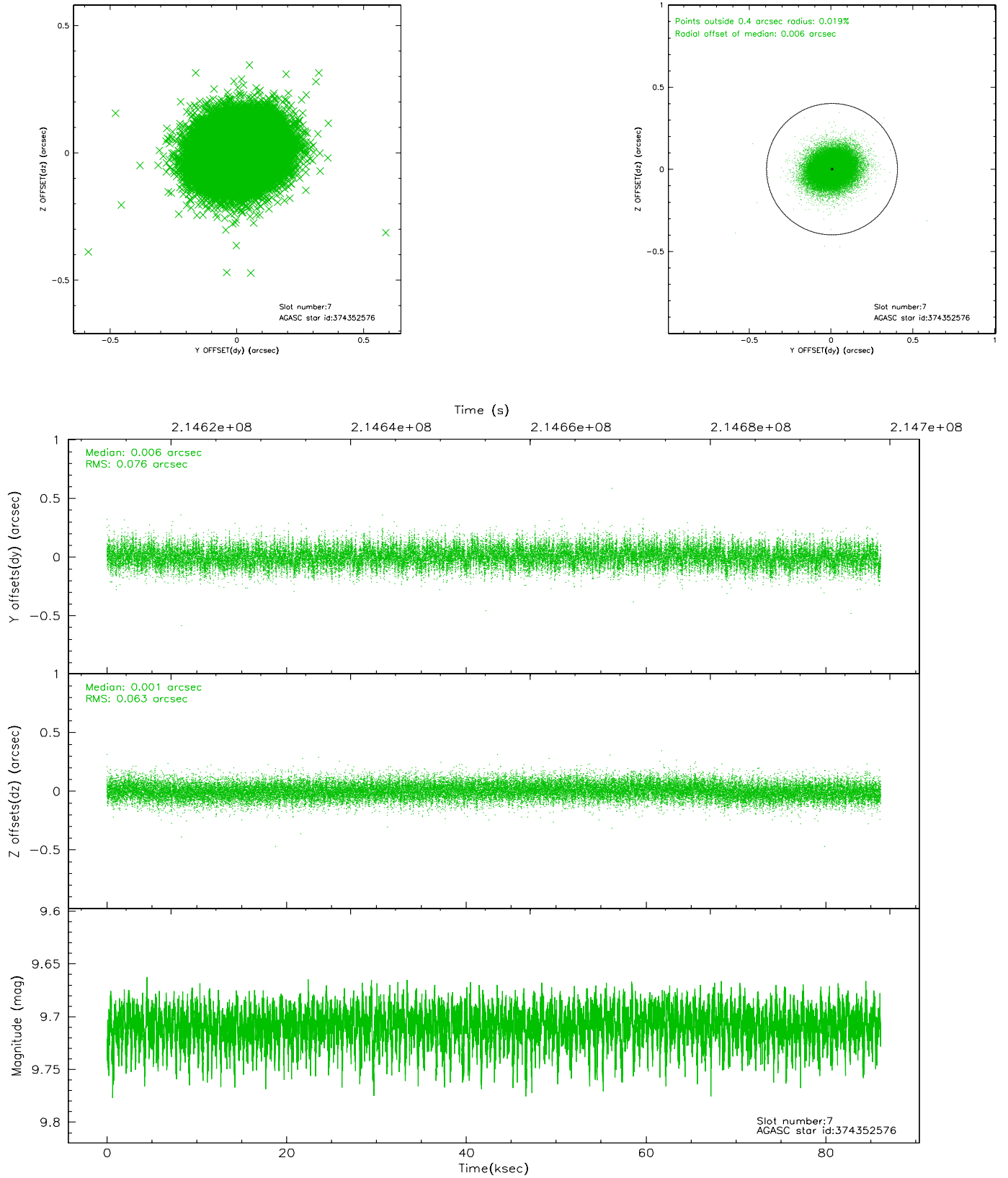
2.4.3 Slot 5



2.4.4 Slot 6

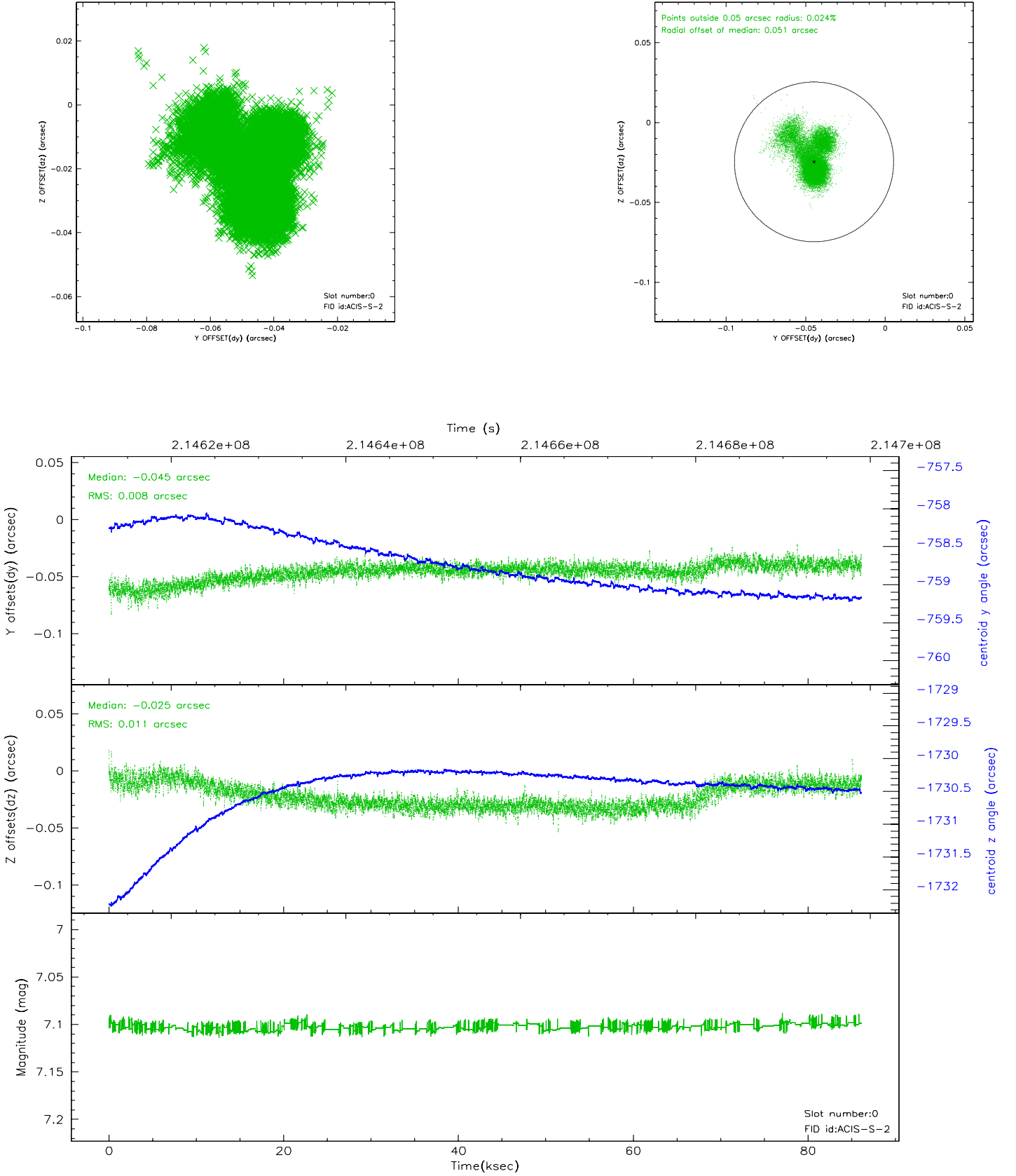


2.4.5 Slot 7

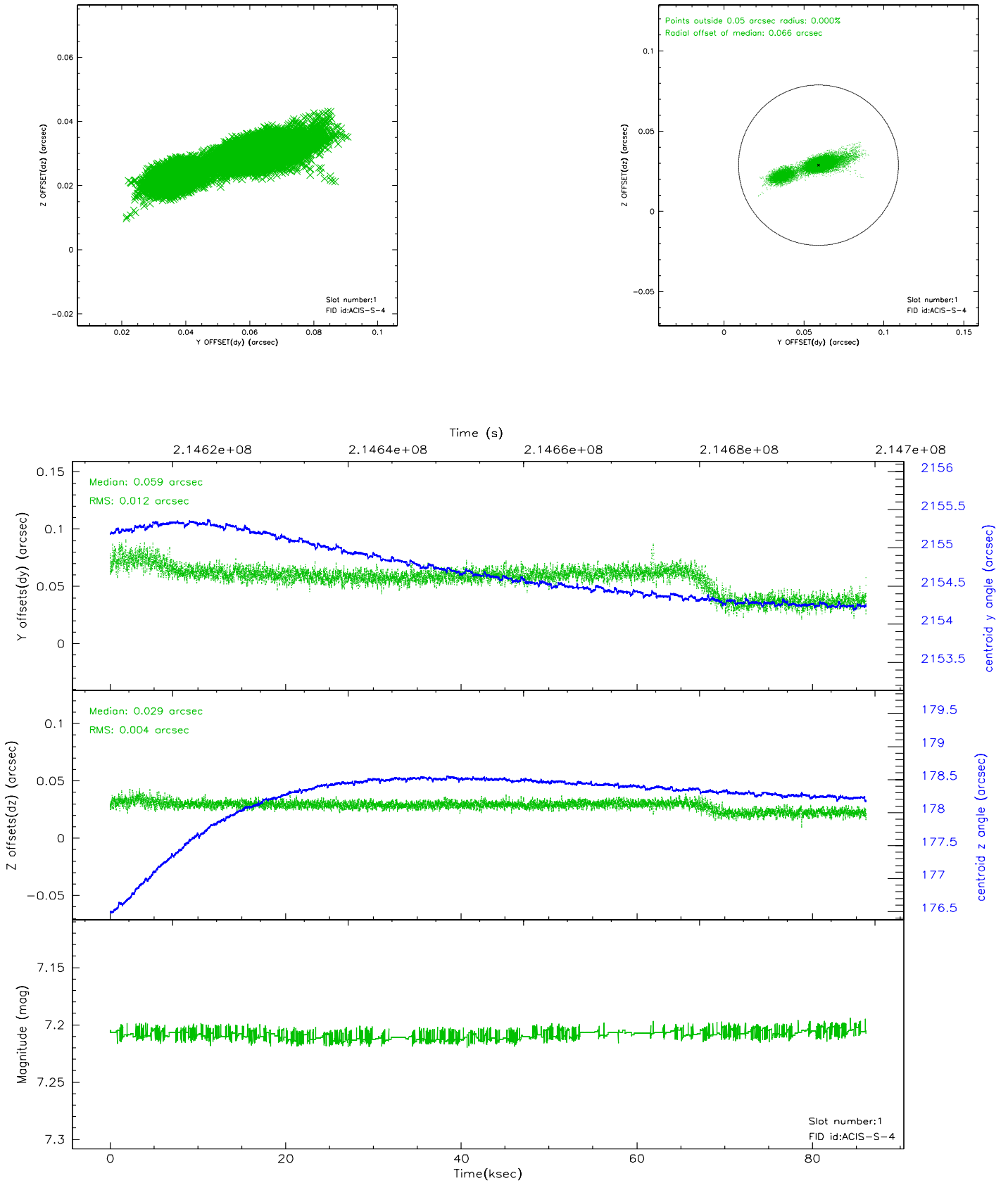


2.5 FID Slots

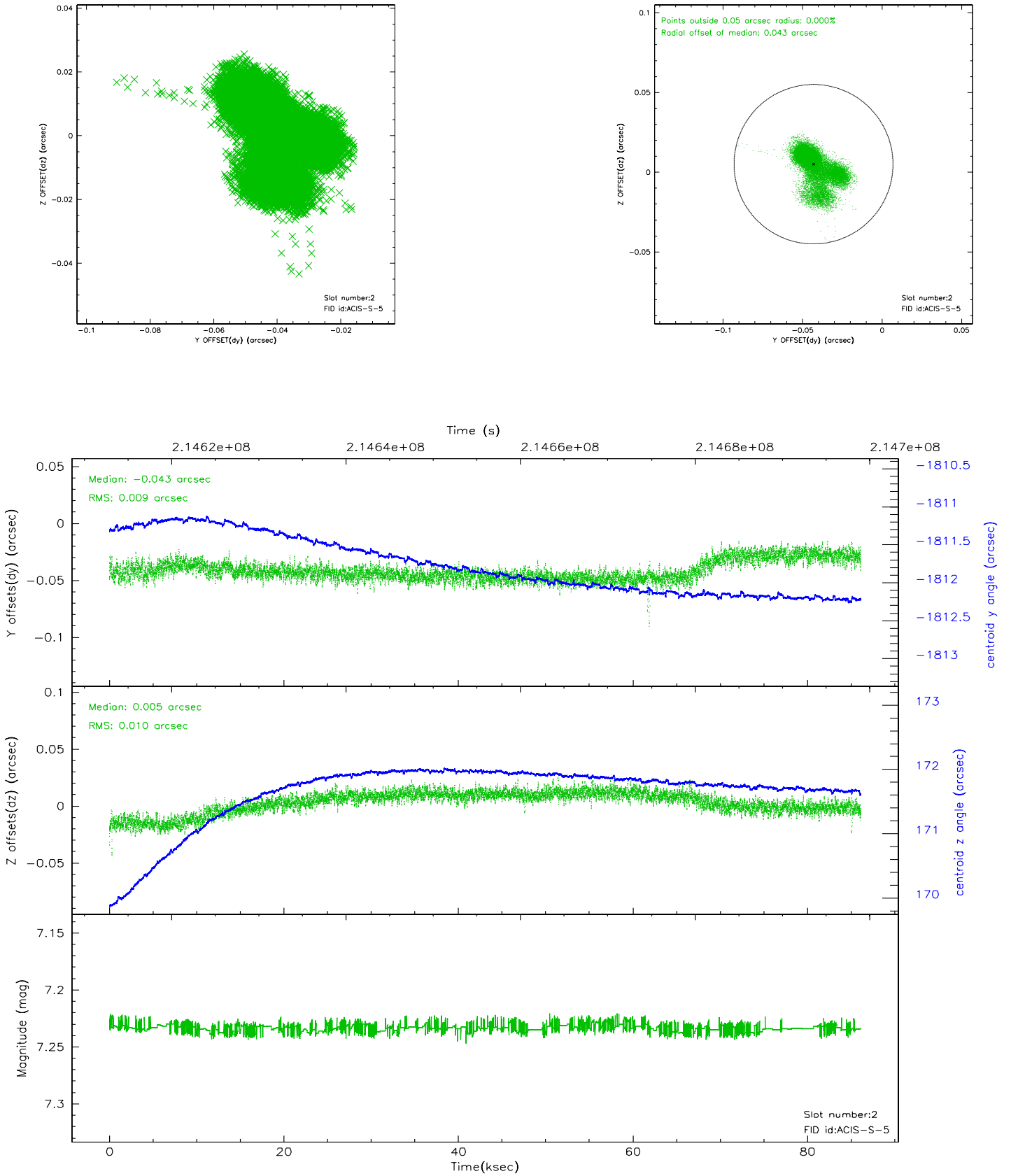
2.5.1 Slot 0



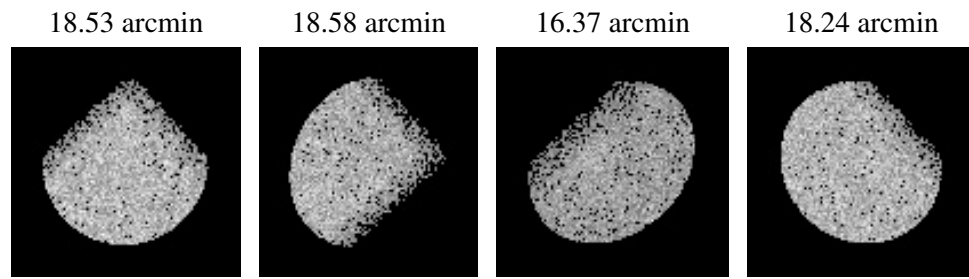
2.5.2 Slot 1



2.5.3 Slot 2



3 Point Sources



A Summary

A.1 Status

V&V Scientist	Beth Sundheim
V&V Date (YYYY-MM-DD)	2006.04.16
V&V Edition	1
V&V Disposition and Status	OK
V&V Charge Time	86.127

A.2 Comments