

V&V Reference Report

L2 ASCDS Version : 7.6.7

Observation 6112 - L2 Version 003
Chandra X-Ray Center

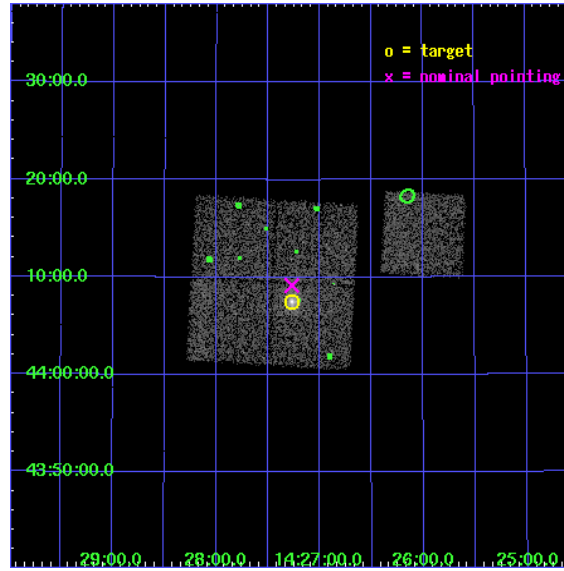
L2 Processing Date: Feb 22 2006

Contents

1	Front	2
2	OBI	3
2.1	OBI	3
2.1.1	Images	3
2.1.2	Bias	3
2.1.3	Parameters	4
2.1.4	Events	4
2.2	Compared Parameters	5
2.3	Aspect	6
2.4	Star Slots	9
2.4.1	Slot 3	9
2.4.2	Slot 4	10
2.4.3	Slot 5	11
2.4.4	Slot 6	12
2.4.5	Slot 7	13
2.5	FID Slots	14
2.5.1	Slot 0	14
2.5.2	Slot 1	15
2.5.3	Slot 2	16
3	Point Sources	17
A	Summary	18
A.1	Status	18
A.2	Comments	18

1 Front

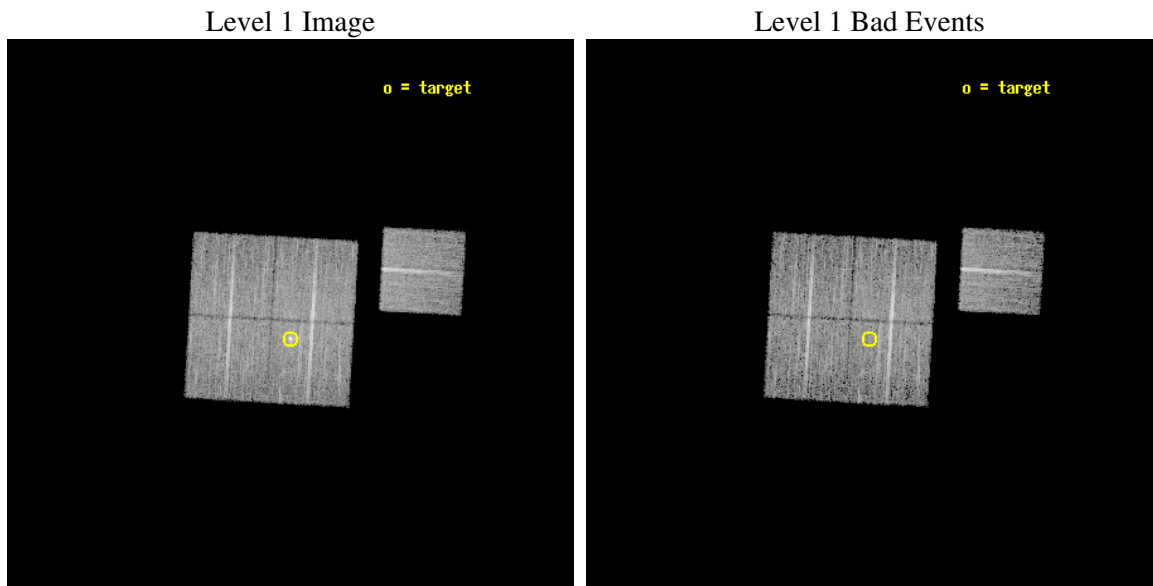
seq_num	800560
obs_id	6112
title	Probing dark energy using the X-ray gas mass fraction in dynamically relaxed galaxy clusters
observer	Dr Steven Allen
object	MACS1427.2+4407
dtcycle	0
cycle	P
ra_targ	216.817083
dec_targ	44.125278
ra_nom	216.81749118219
dec_nom	44.152903810734
roll_nom	93.256561546212
revision	3
ontime	9510.7999817133
livetime	9386.5343782031
ontime0	9510.7999817133
ontime1	9510.7999817133
ontime2	9510.7999817133
ontime3	9510.7999817133
ontime6	9507.6546306312
l2events	26620



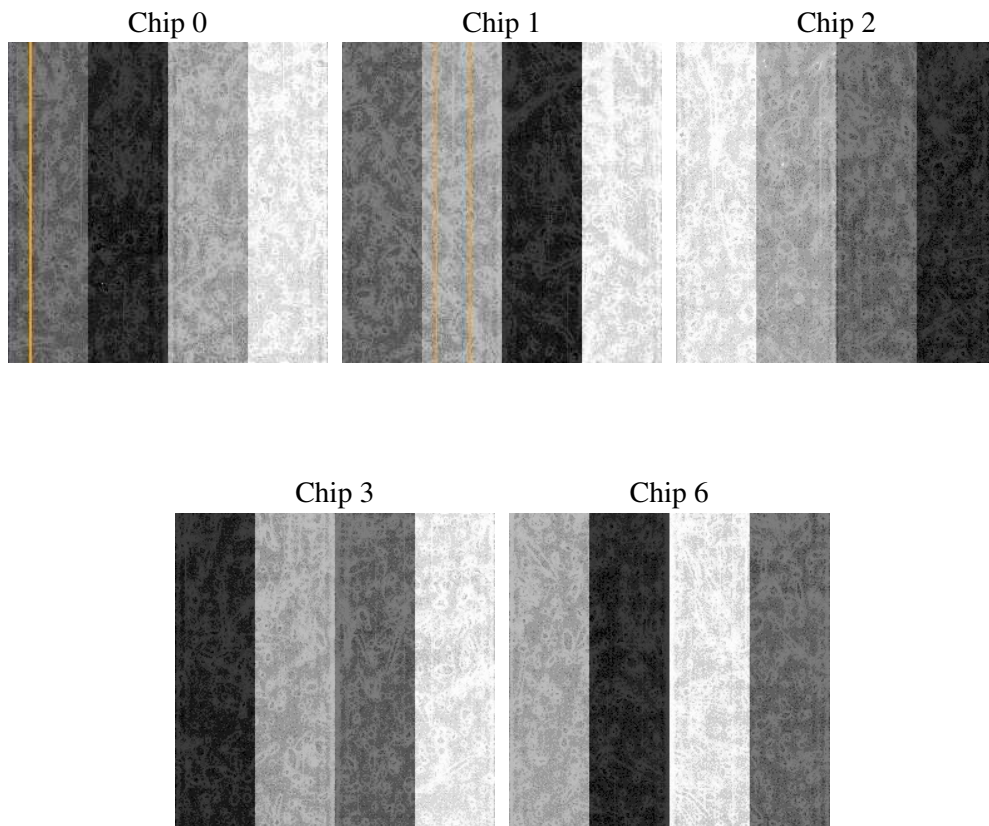
2 OBI

2.1 OBI

2.1.1 Images



2.1.2 Bias



2.1.3 Parameters

obi_num	2
ascdsver	7.6.7
caldsver	3.2.1
date	2006-02-23T00:11:16
revision	3

sched_exp_time	9455.116000
ontime	9514.1232907176
ontime0	9514.1233106256
ontime1	9514.1233106256
ontime2	9514.1233106256
ontime3	9514.1232907176
ontime6	9510.9823203683
l1events	284266

2.1.4 Events

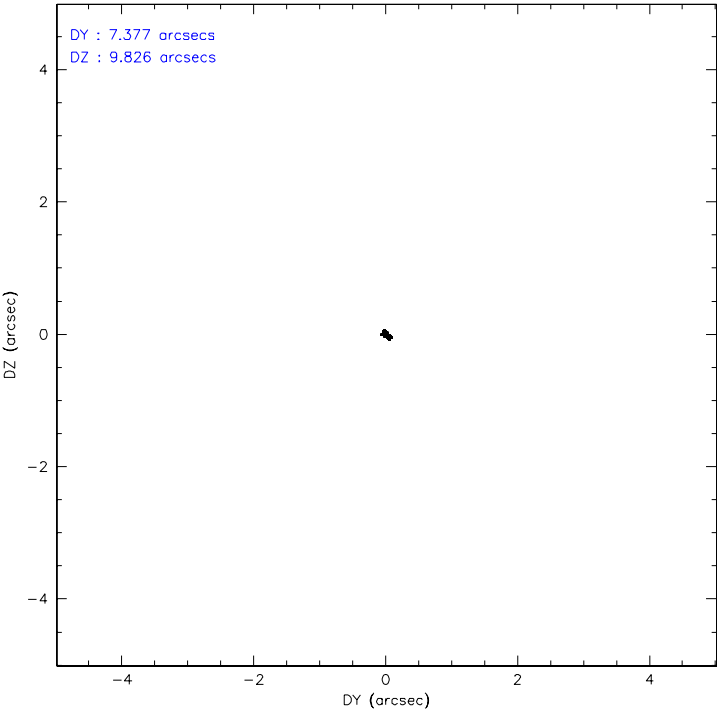
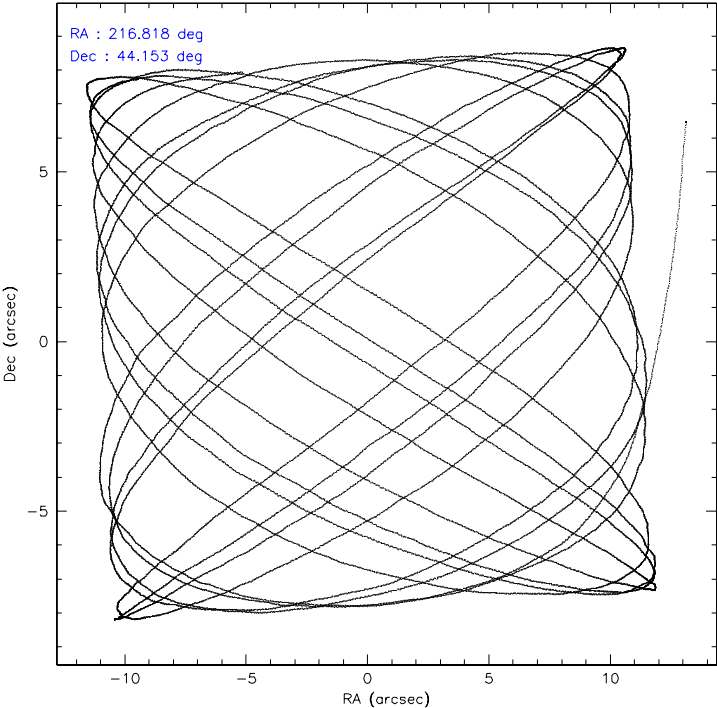
	ccd 0	ccd 1	ccd 2	ccd 3	ccd 6
level 1 events	53898	53883	59845	59328	57312
rejected events	48190	47599	53903	51620	51531
rejected %	89%	88%	90%	87%	89%

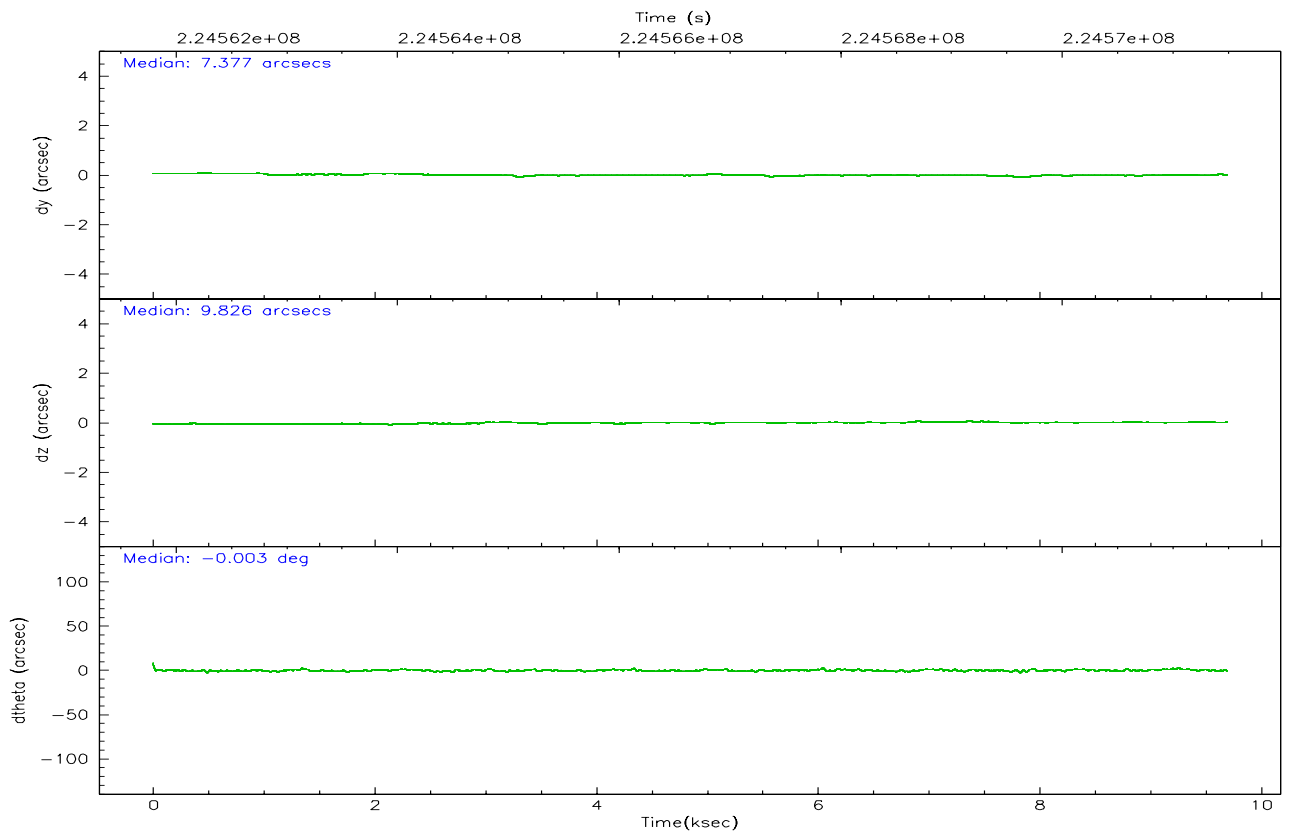
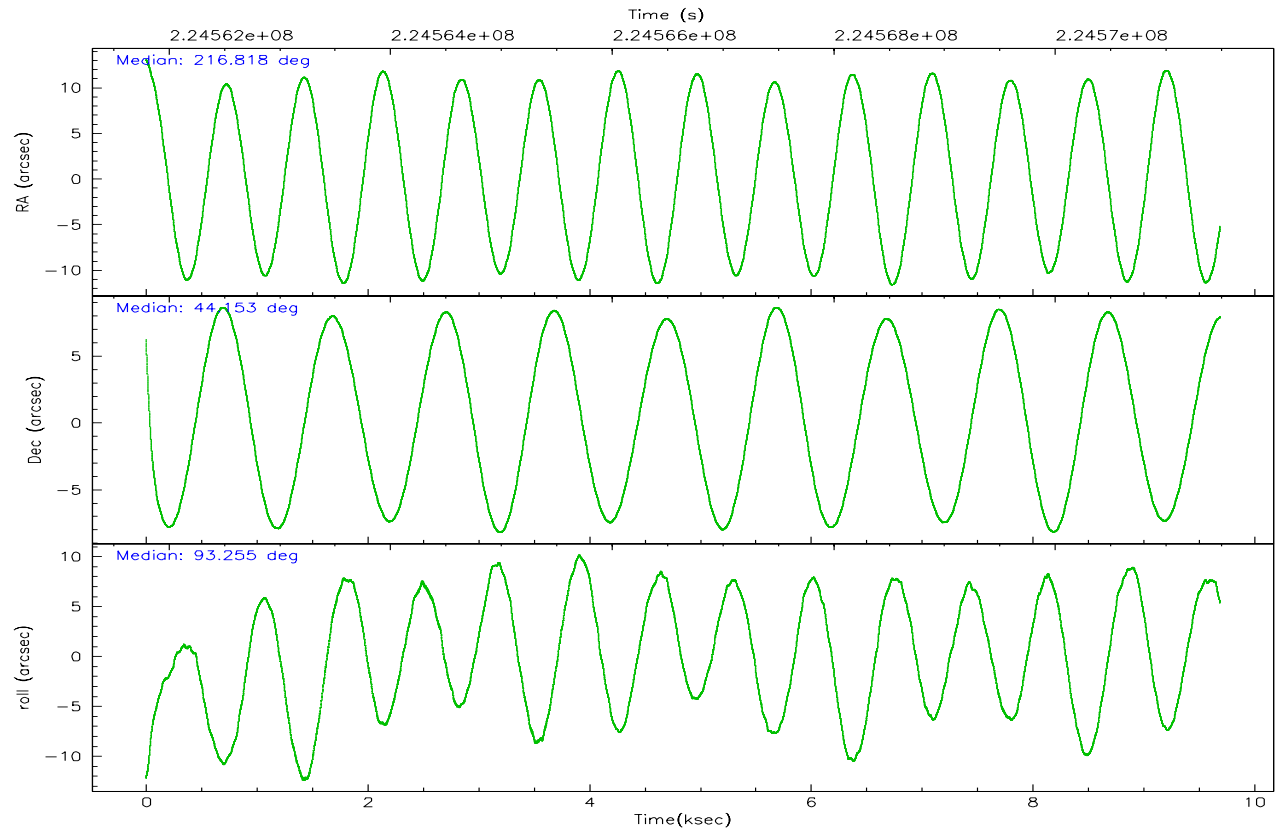
	ccd 0	ccd 1	ccd 2	ccd 3	ccd 6
grade 0 events	2025	2257	2272	3843	2025
	3%	4%	3%	6%	3%
grade 1 events	25	30	36	49	23
	0%	0%	0%	0%	0%
grade 2 events	1259	1294	1294	1374	1171
	2%	2%	2%	2%	2%
grade 3 events	687	671	667	665	640
	1%	1%	1%	1%	1%
grade 4 events	590	725	605	669	658
	1%	1%	1%	1%	1%
grade 5 events	2043	2160	1908	2221	2309
	3%	4%	3%	3%	4%
grade 6 events	1154	1339	1105	1162	1287
	2%	2%	1%	1%	2%
grade 7 events	46115	45407	51958	49345	49199
	85%	84%	86%	83%	85%

2.2 Compared Parameters

Parameter	Planned	Actual	Parameter	Planned	Actual
Instrument	ACIS	ACIS	Obspar format version number	6	6
Detector	ACIS-01236	ACIS-01236	Obspar file type	PREDICTED	ACTUAL
Grating	NONE	NONE	Obspar update status	NONE	UPDATED
Data mode	VFAINT	VFAINT	On-chip summing requested	N	N
Observation mode	POINTING	POINTING	Subarray requested	NONE	NONE
Pointing RA	216.838585	216.8174911821868	Alternating exposures requested	N	N
Pointing Dec	44.130107	44.15290381073389	Primary exposure time	0.000000	3.1
Pointing Roll	93.033189	93.25656154621231			
SIM focus pos (mm)	-0.782348	-0.7809083437167272			
SIM defocus (mm)	0	0.001439871863259334			
SIM translation stage pos (mm)	-229.442463	-229.4438428438578			
SIM translation stage offset (mm)	-4.15	-4.148610159071865			
Observation start time	224562027.184000	224561067.20117			
Observation start date	2005-02-12T02:19:23	2005-02-12T02:04:27			
Observation end time	224571483.184000	224571719.51415			
Observation end date	2005-02-12T04:56:59	2005-02-12T05:01:59			
Read mode	TIMED	TIMED			

2.3 Aspect



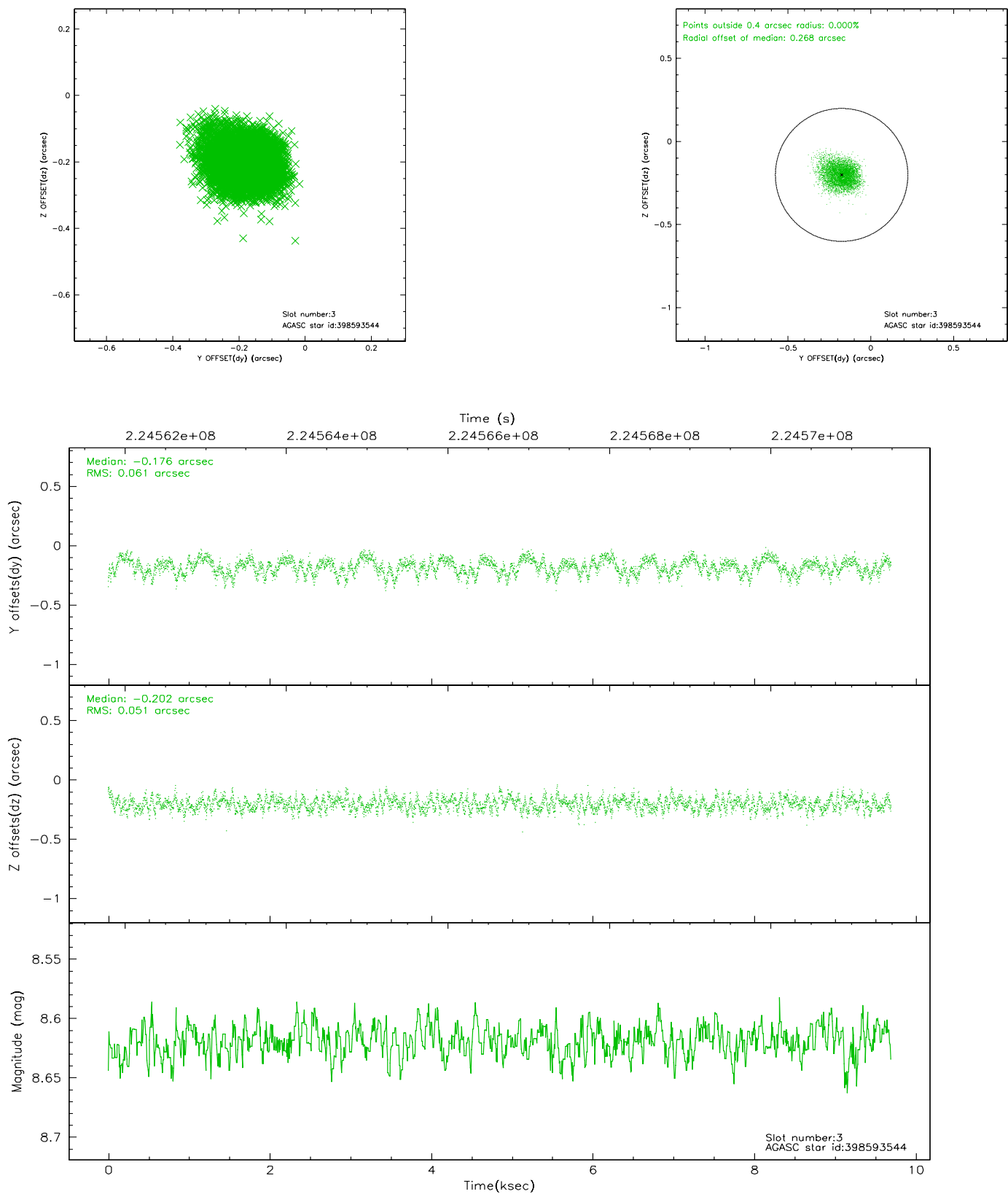


Slot Statistics

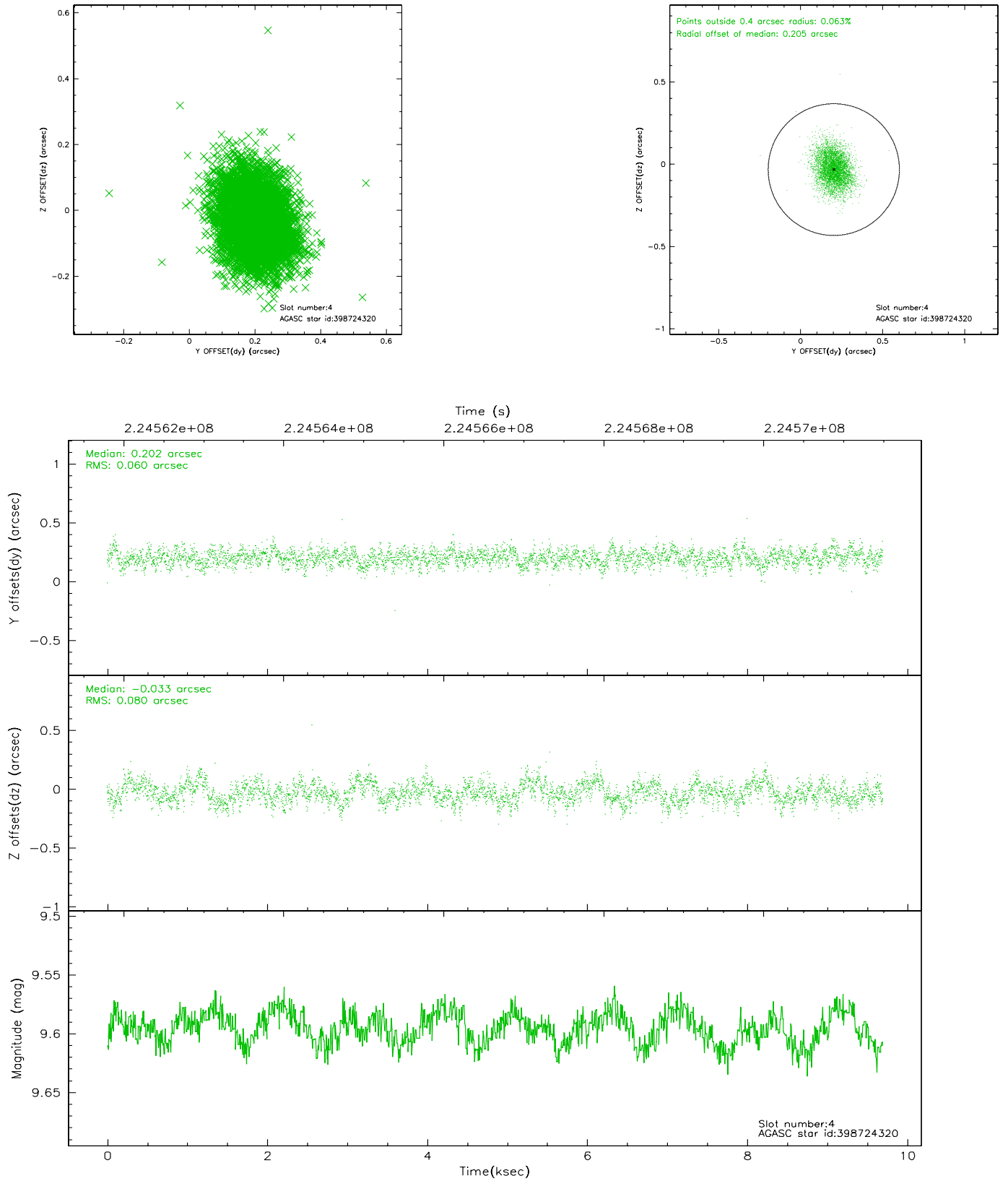
slot	status	id	mag	n_pts	med_dy	med_dz	dr1	dr2	ra	dec	mean_y	mean_z
0	FID	ACIS-I-2	7.16	2364	-0.065	-0.069	0.019	0.036	0.000000	0.000000	-762.23	-924.29
1	FID	ACIS-I-4	7.15	2365	0.090	0.061	0.008	0.014	0.000000	0.000000	2151.69	981.71
2	FID	ACIS-I-5	7.22	2365	-0.126	0.077	0.016	0.028	0.000000	0.000000	-1815.22	979.62
3	GUIDE	398593544	8.62	4731	-0.176	-0.202	0.086	0.136	216.095119	44.392456	1053.04	1859.28
4	GUIDE	398724320	9.60	4729	0.202	-0.033	0.106	0.173	217.327713	43.656759	-1764.44	-1181.95
5	GUIDE	398726944	9.56	4726	0.059	0.103	0.107	0.175	216.859138	44.488148	1284.46	-121.05
6	GUIDE	398727024	9.59	4726	0.057	-0.046	0.097	0.163	217.158424	44.398345	924.32	-872.09
7	GUIDE	398723112	8.80	4727	-0.139	0.179	0.080	0.130	217.784921	43.791453	-1332.99	-2392.09

2.4 Star Slots

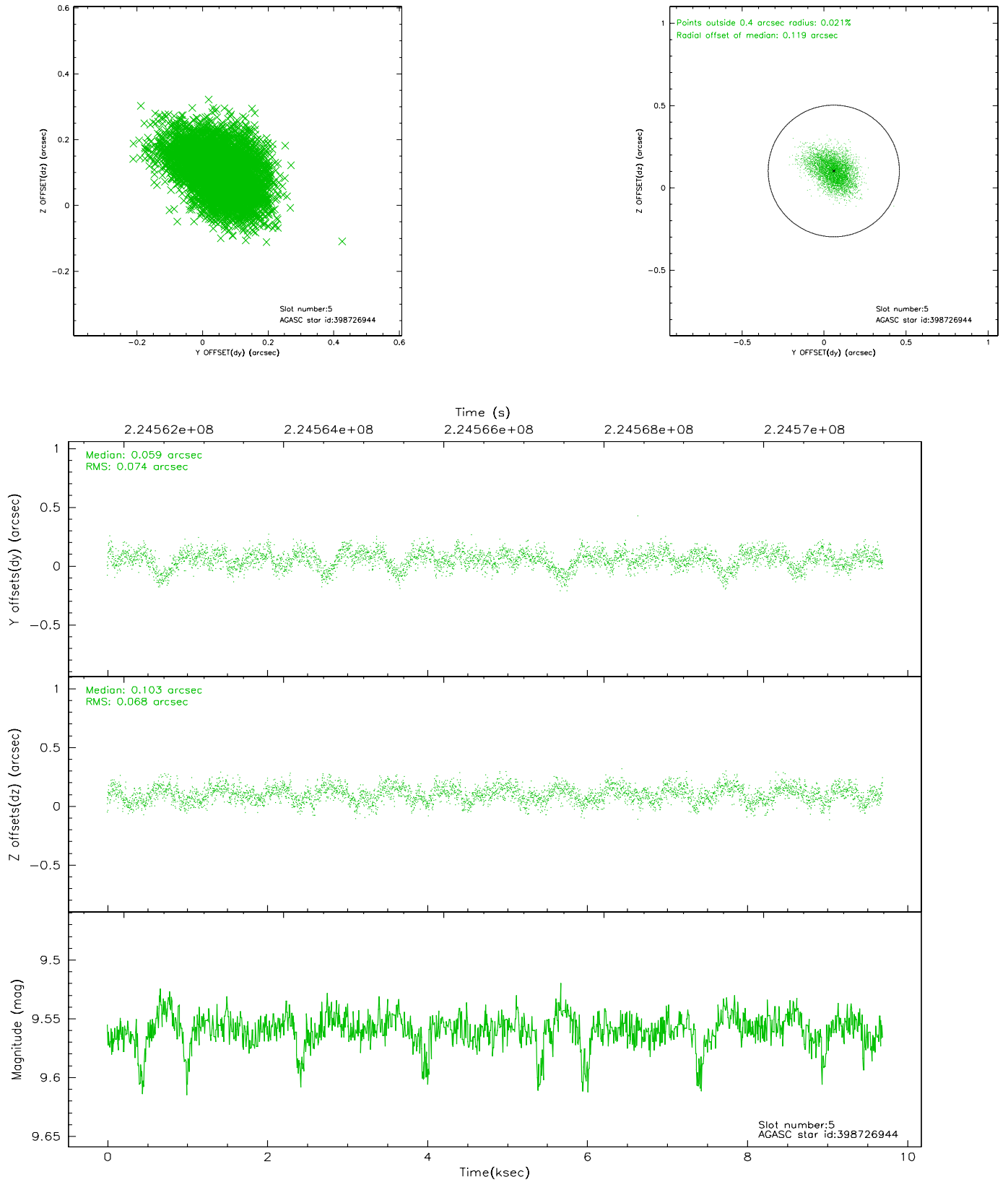
2.4.1 Slot 3



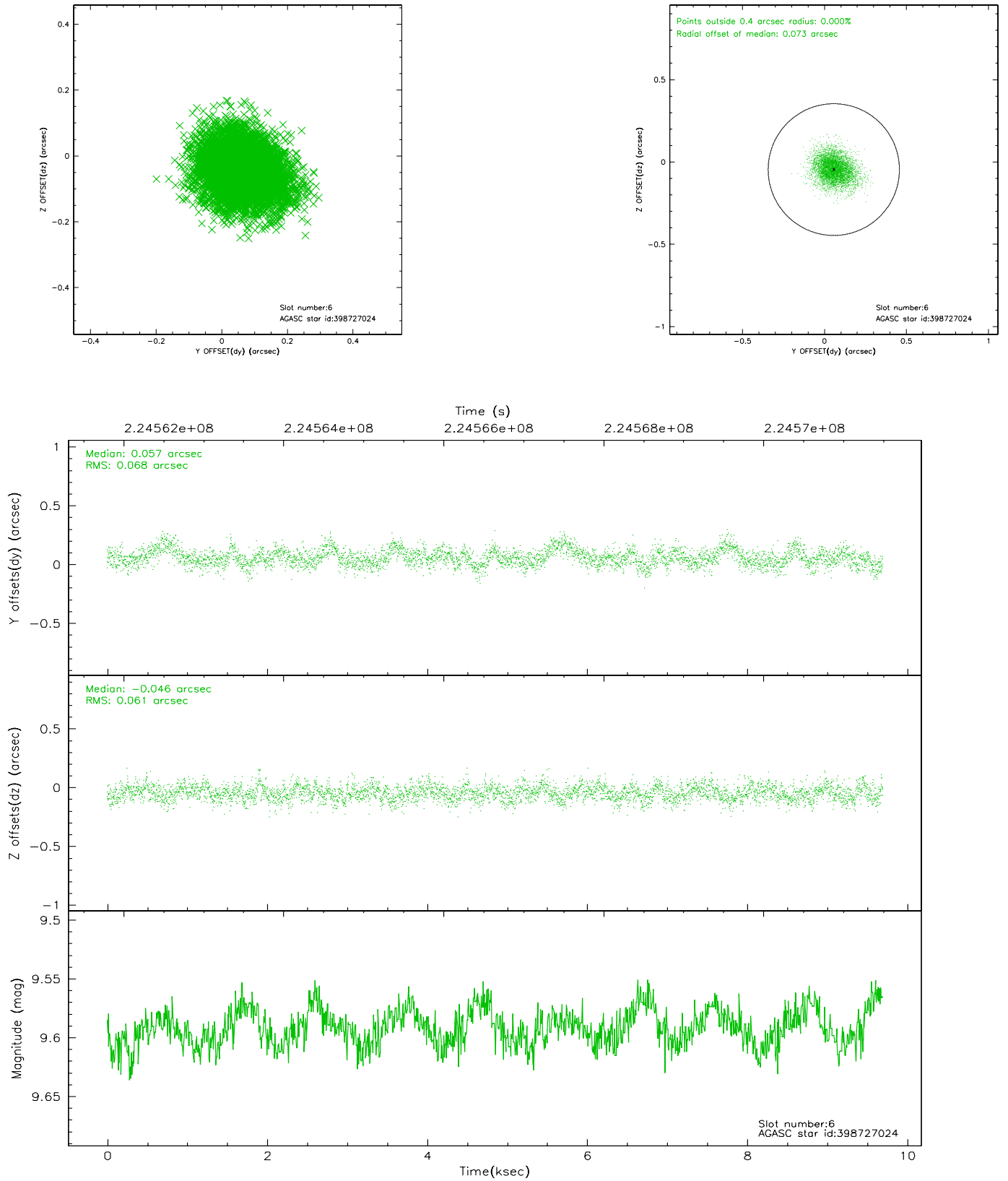
2.4.2 Slot 4



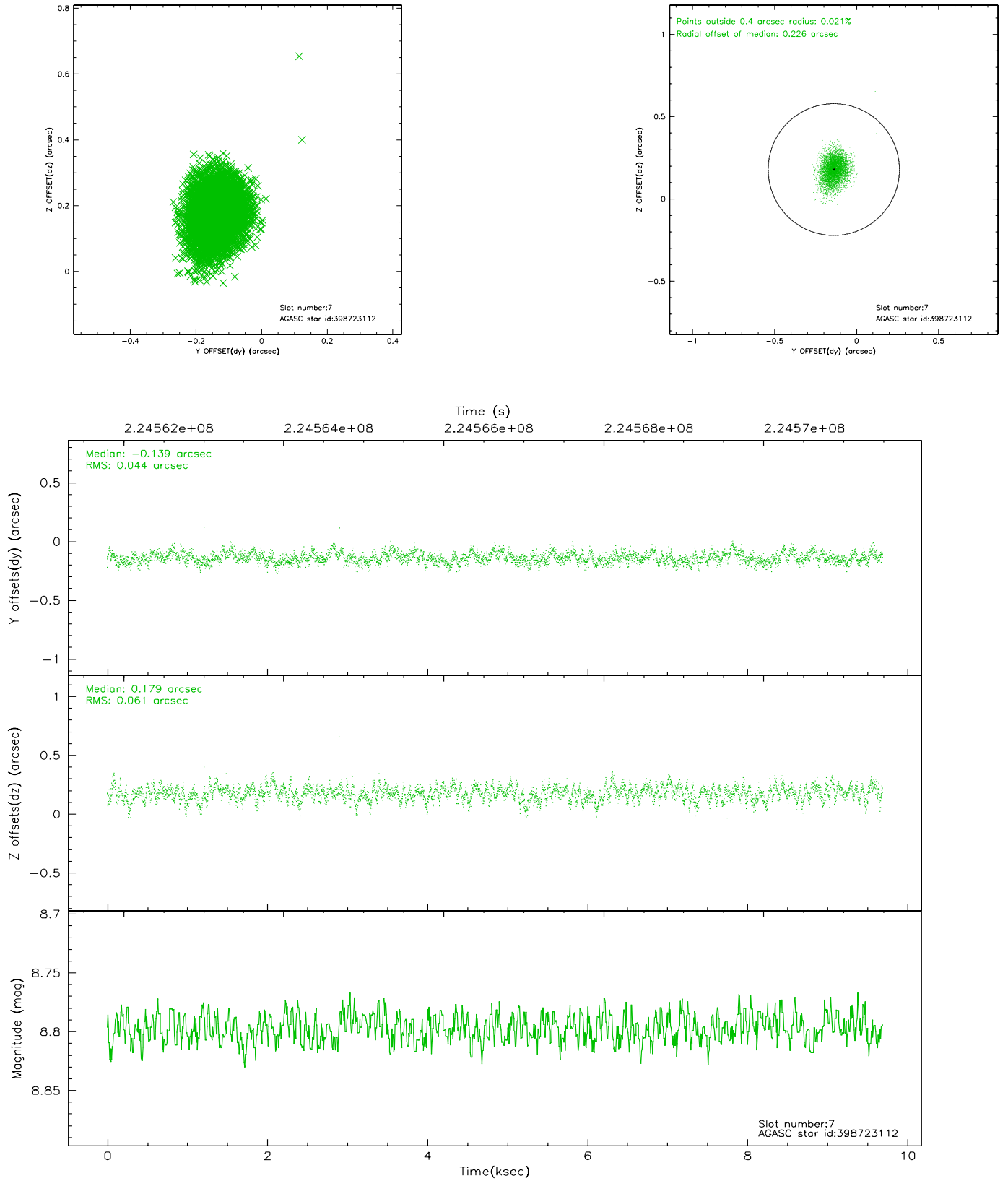
2.4.3 Slot 5



2.4.4 Slot 6

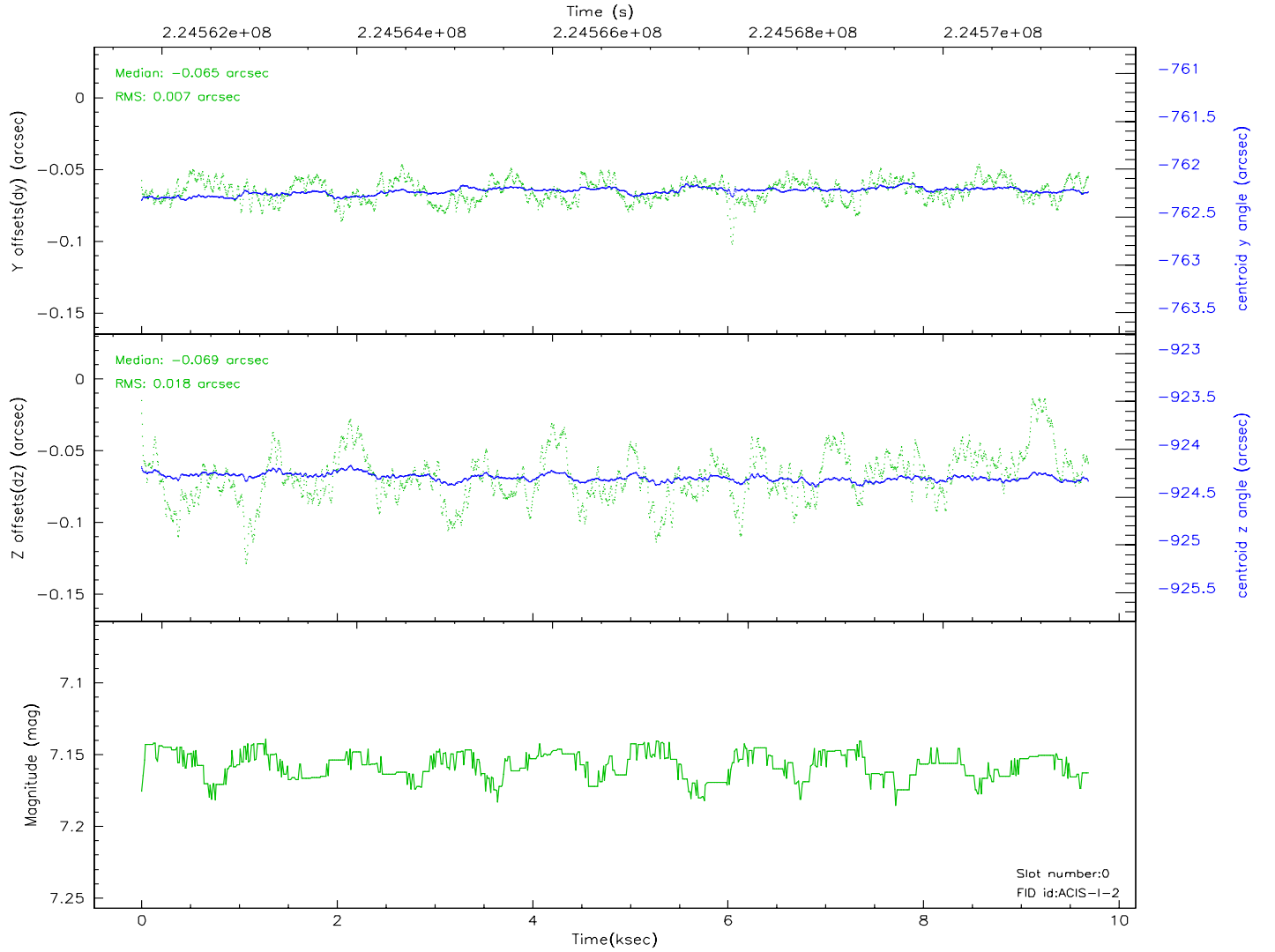
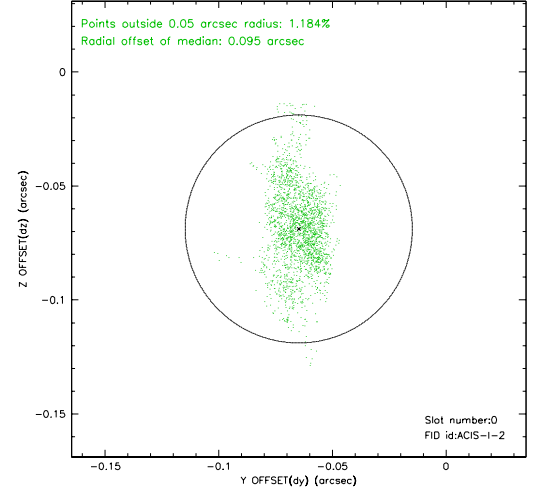
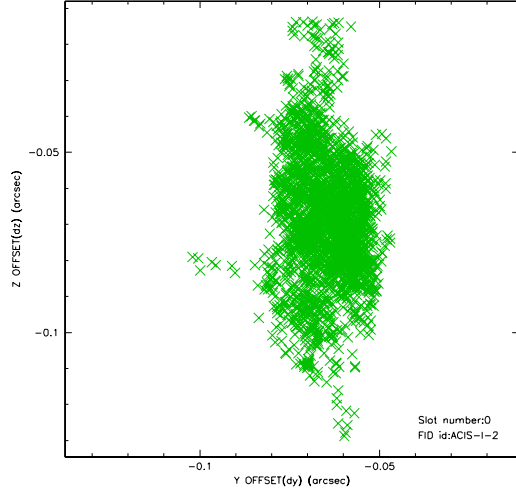


2.4.5 Slot 7

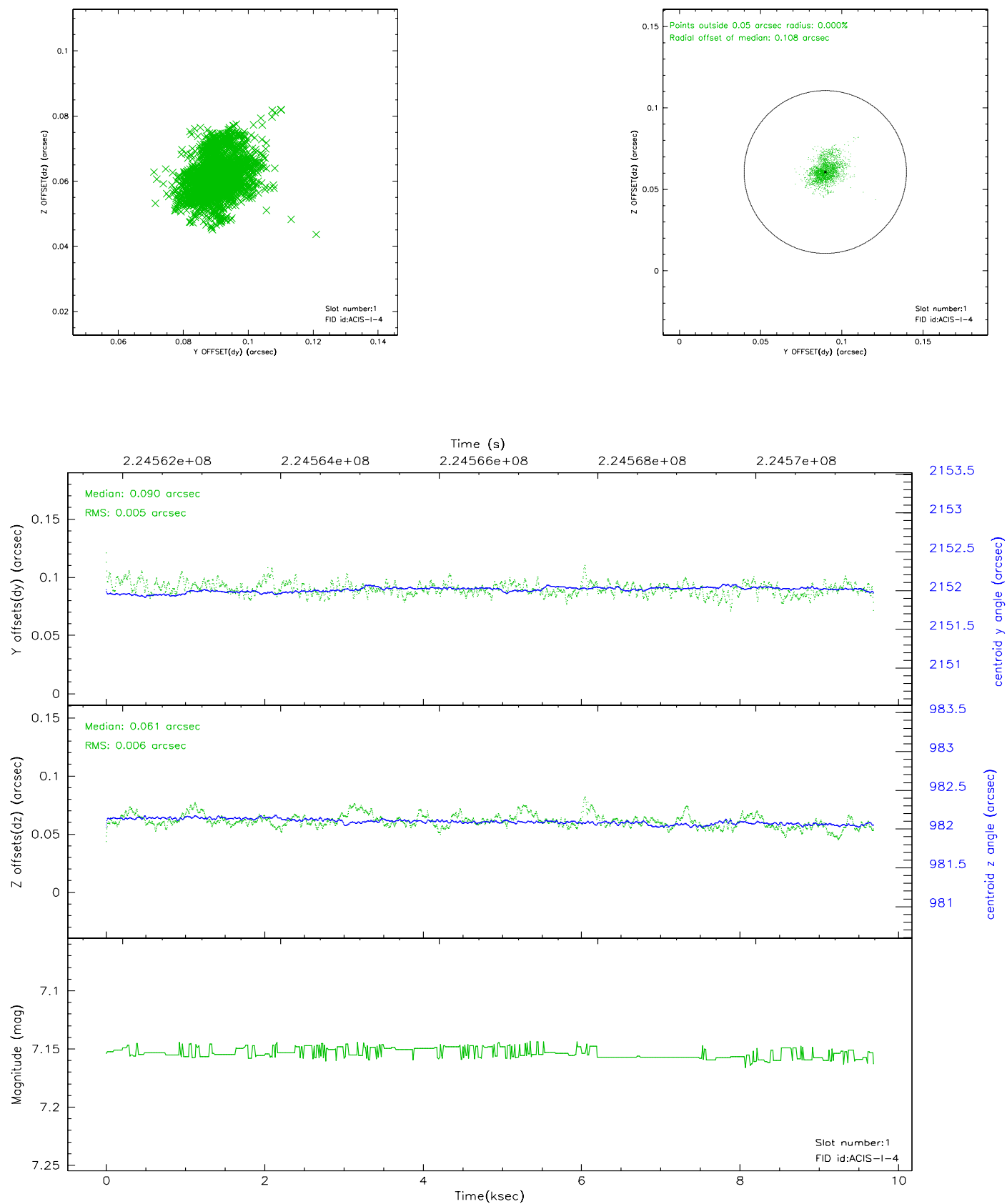


2.5 FID Slots

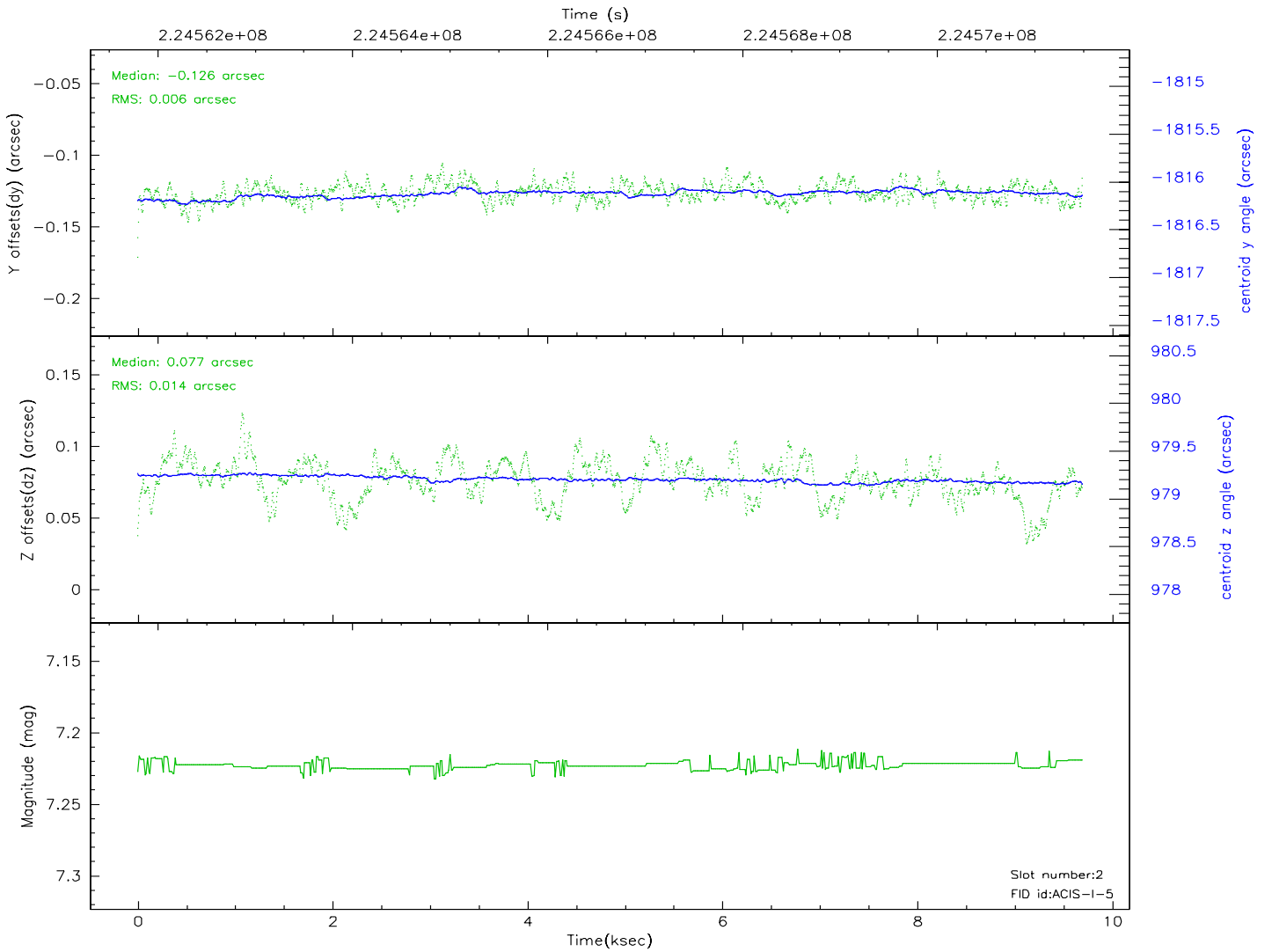
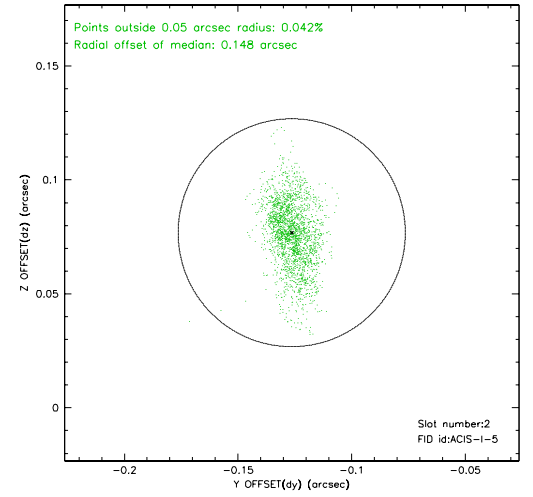
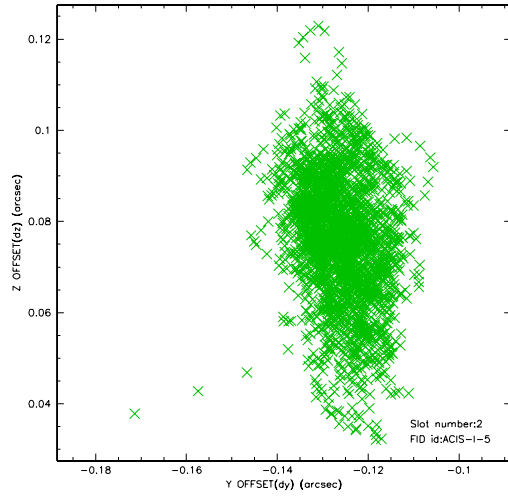
2.5.1 Slot 0



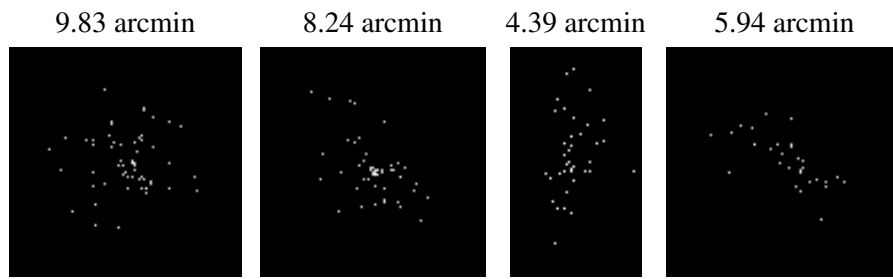
2.5.2 Slot 1



2.5.3 Slot 2



3 Point Sources



A Summary

A.1 Status

V&V Scientist	Beth Sundheim
V&V Date (YYYY-MM-DD)	2006.02.23
V&V Edition	1
V&V Disposition and Status	OK
V&V Charge Time	9.510799

A.2 Comments

Focal plane temperature is elevated. Calibration may be affected.