

V&V Reference Report

L2 ASCDS Version : 7.6.7

Observation 6110 - L2 Version 002
Chandra X-Ray Center

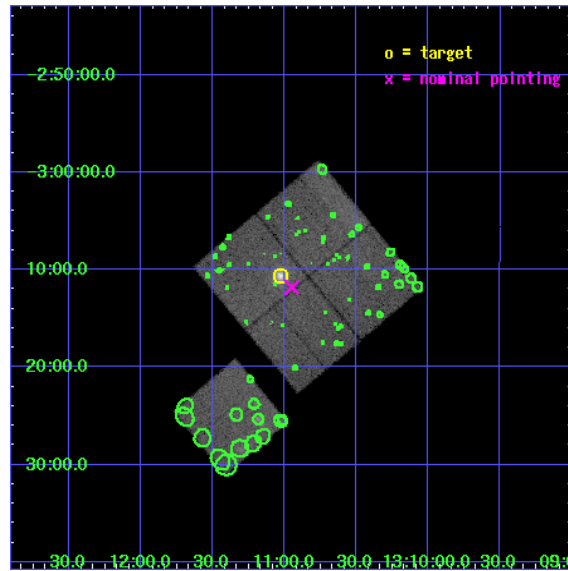
L2 Processing Date: Mar 2 2006

Contents

1	Front	2
2	OBI	3
2.1	OBI	3
2.1.1	Images	3
2.1.2	Bias	3
2.1.3	Parameters	4
2.1.4	Events	4
2.2	Compared Parameters	5
2.3	Aspect	6
2.4	Star Slots	9
2.4.1	Slot 3	9
2.4.2	Slot 4	10
2.4.3	Slot 5	11
2.4.4	Slot 6	12
2.4.5	Slot 7	13
2.5	FID Slots	14
2.5.1	Slot 0	14
2.5.2	Slot 1	15
2.5.3	Slot 2	16
3	Point Sources	17
A	Summary	18
A.1	Status	18
A.2	Comments	18

1 Front

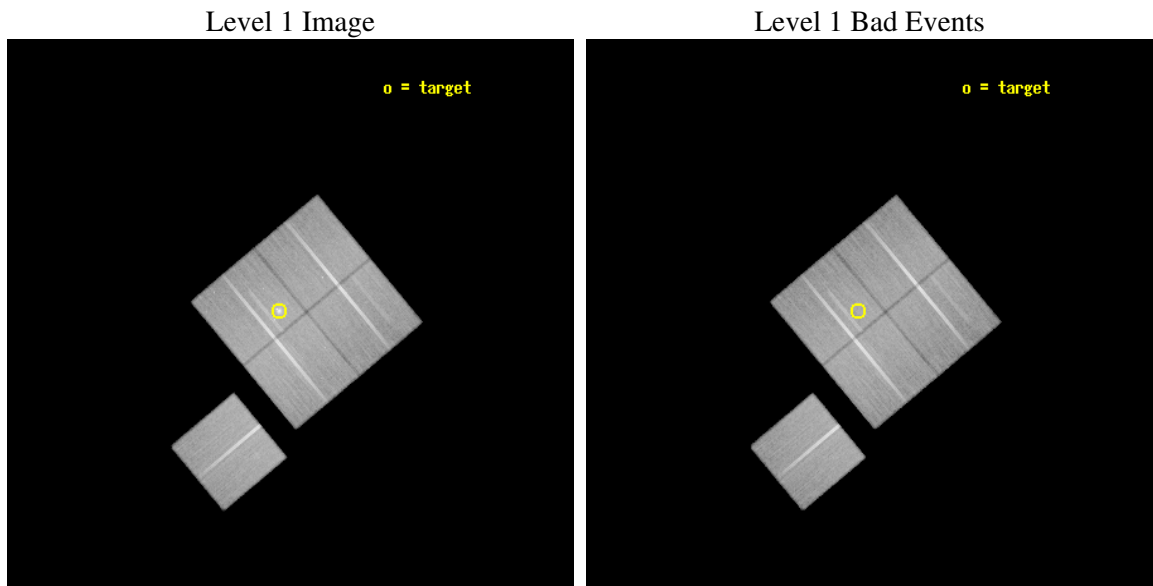
seq_num	800558
obs_id	6110
title	Probing dark energy using the X-ray gas mass fraction in dynamically relaxed galaxy clusters
observer	Dr Steven Allen
object	MACS1311.0-0311
dtcycle	0
cycle	P
ra_targ	197.756667
dec_targ	-3.177222
ra_nom	197.73749852586
dec_nom	-3.1971849195288
roll_nom	230.13344128828
revision	2
ontime	64042.817876518
livetime	63206.051313324
ontime0	64049.099876851
ontime1	64039.676916182
ontime2	64045.958896607
ontime3	64042.817876518
ontime6	64042.817896366
l2events	184049



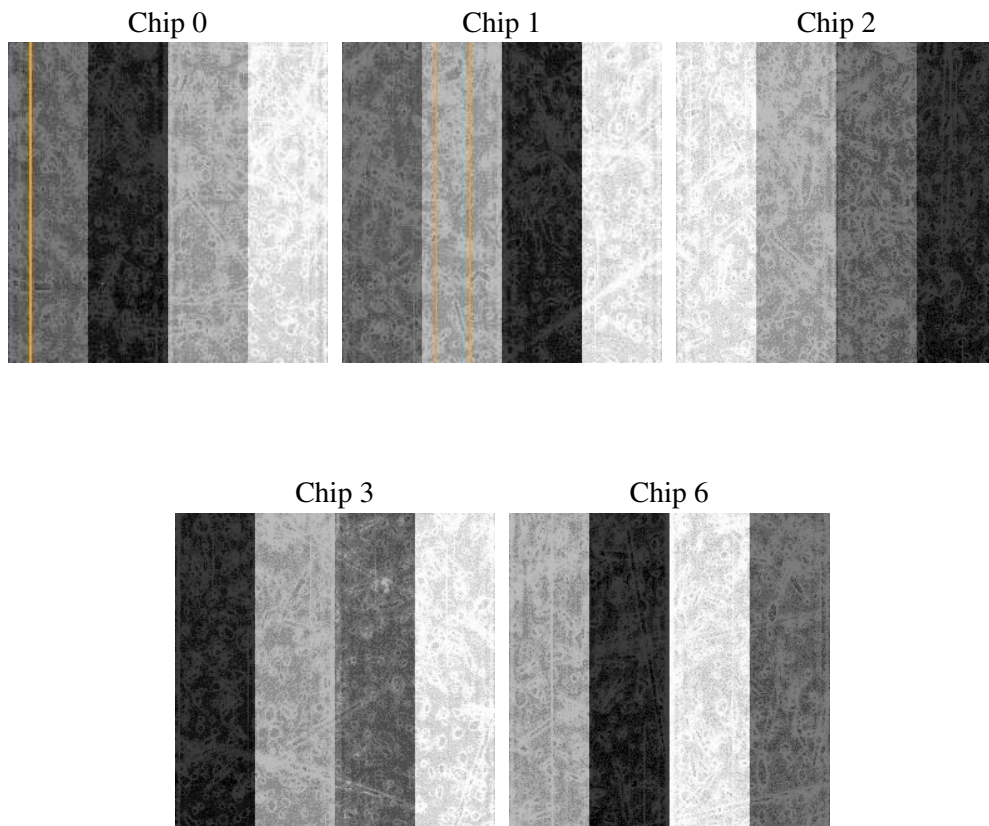
2 OBI

2.1 OBI

2.1.1 Images



2.1.2 Bias



2.1.3 Parameters

obi_num	0
ascdsver	7.6.7
caldbver	3.2.1
date	2006-03-02T06:09:45
revision	2

sched_exp_time	64000.000000
ontime	64048.359052271
ontime0	64054.641052604
ontime1	64045.218091935
ontime2	64051.50007236
ontime3	64048.359052271
ontime6	64048.359072119
l1events	2063581

2.1.4 Events

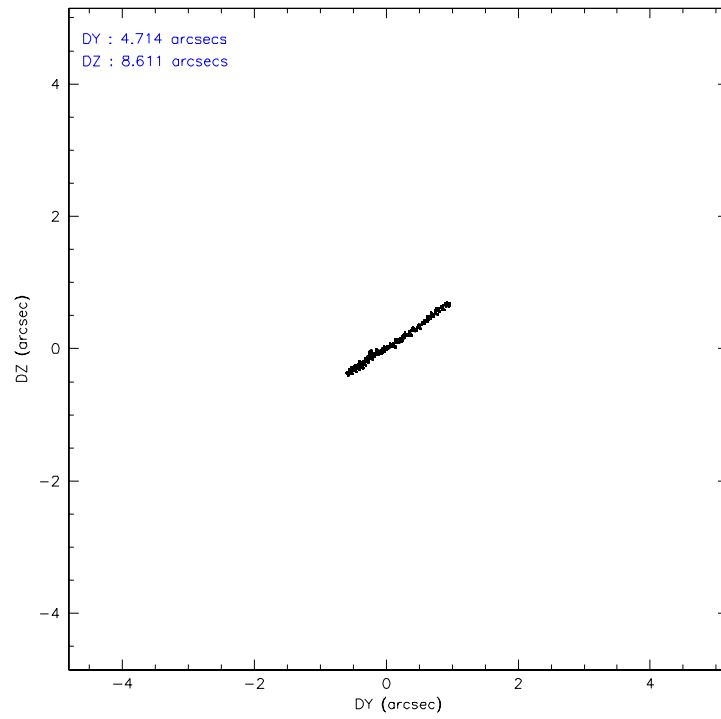
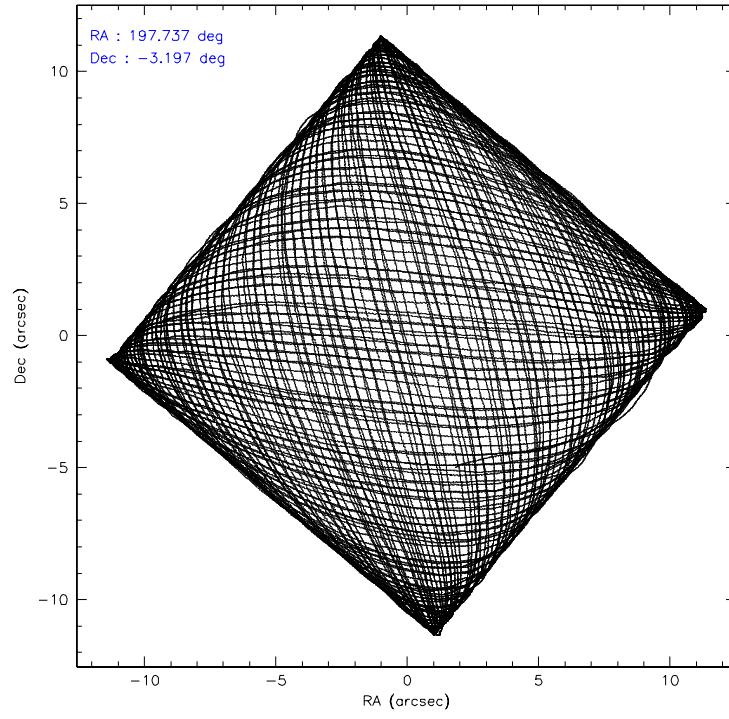
	ccd 0	ccd 1	ccd 2	ccd 3	ccd 6
level 1 events	386042	392384	439300	420656	425199
rejected events	344907	346190	399254	372074	382628
rejected %	89%	88%	90%	88%	89%

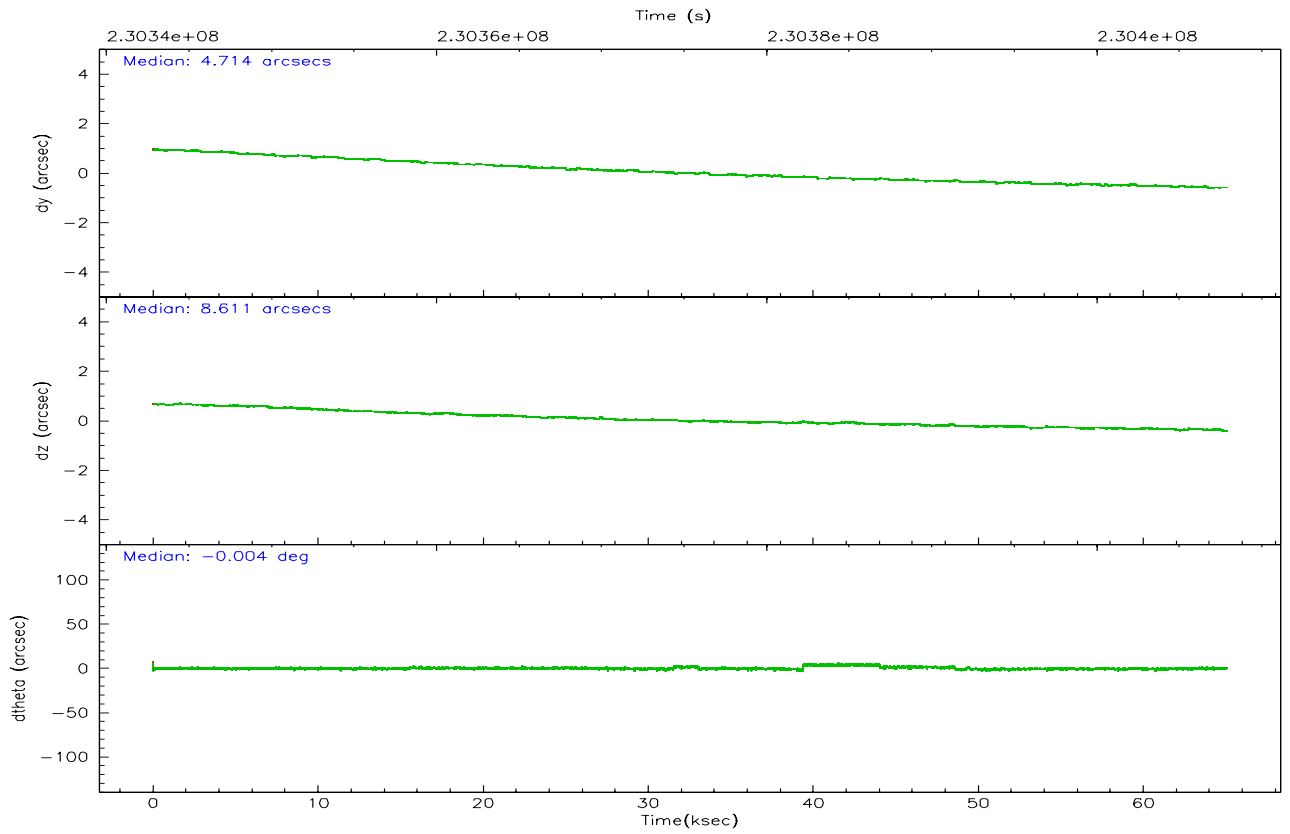
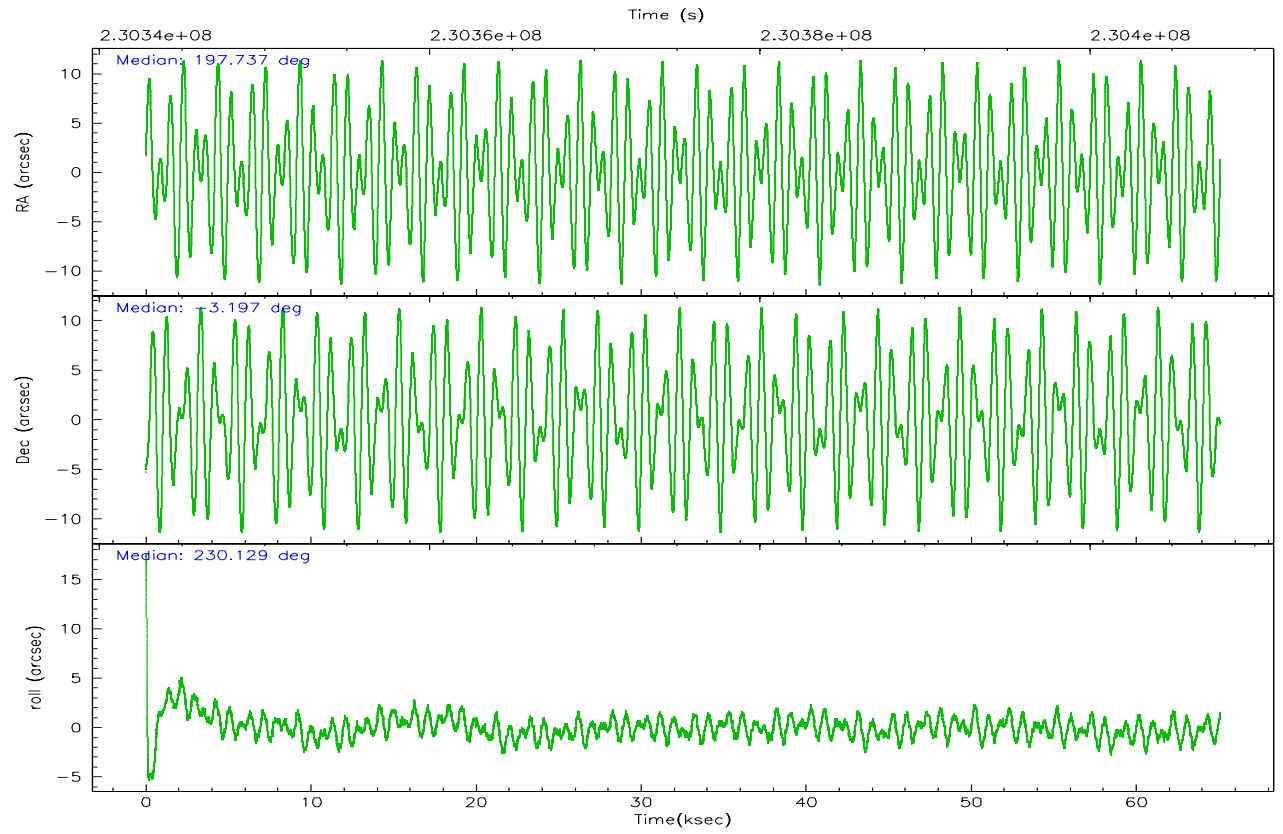
	ccd 0	ccd 1	ccd 2	ccd 3	ccd 6
grade 0 events	14279	16815	14544	22029	15153
	3%	4%	3%	5%	3%
grade 1 events	181	197	219	263	160
	0%	0%	0%	0%	0%
grade 2 events	9594	9866	9231	9230	9142
	2%	2%	2%	2%	2%
grade 3 events	4939	5108	4428	4779	4702
	1%	1%	1%	1%	1%
grade 4 events	4438	4995	4516	4632	4692
	1%	1%	1%	1%	1%
grade 5 events	14430	15397	13779	16695	16181
	3%	3%	3%	3%	3%
grade 6 events	7886	9414	7331	7917	8885
	2%	2%	1%	1%	2%
grade 7 events	330295	330592	385252	355111	366284
	85%	84%	87%	84%	86%

2.2 Compared Parameters

Parameter	Planned	Actual	Parameter	Planned	Actual
Instrument	ACIS	ACIS	Obspar format version number	6	6
Detector	ACIS-01236	ACIS-01236	Obspar file type	PREDICTED	ACTUAL
Grating	NONE	NONE	Obspar update status	NONE	UPDATED
Data mode	VFAINT	VFAINT	On-chip summing requested	N	N
Observation mode	POINTING	POINTING	Subarray requested	NONE	NONE
Pointing RA	197.742080	197.7374985258585	Alternating exposures requested	N	N
Pointing Dec	-3.170192	-3.197184919528809	Primary exposure time	0.000000	3.1
Pointing Roll	229.925002	230.133441288277			
SIM focus pos (mm)	-0.782348	-0.7809083437167272			
SIM defocus (mm)	0	0.001439871863259334			
SIM translation stage pos (mm)	-229.442463	-229.4438428438578			
SIM translation stage offset (mm)	-4.15	-4.148610159071865			
Observation start time	230343900.184000	230342524.61337			
Observation start date	2005-04-20T00:23:56	2005-04-20T00:02:04			
Observation end time	230407900.184000	230408999.4539			
Observation end date	2005-04-20T18:10:36	2005-04-20T18:29:59			
Read mode	TIMED	TIMED			

2.3 Aspect



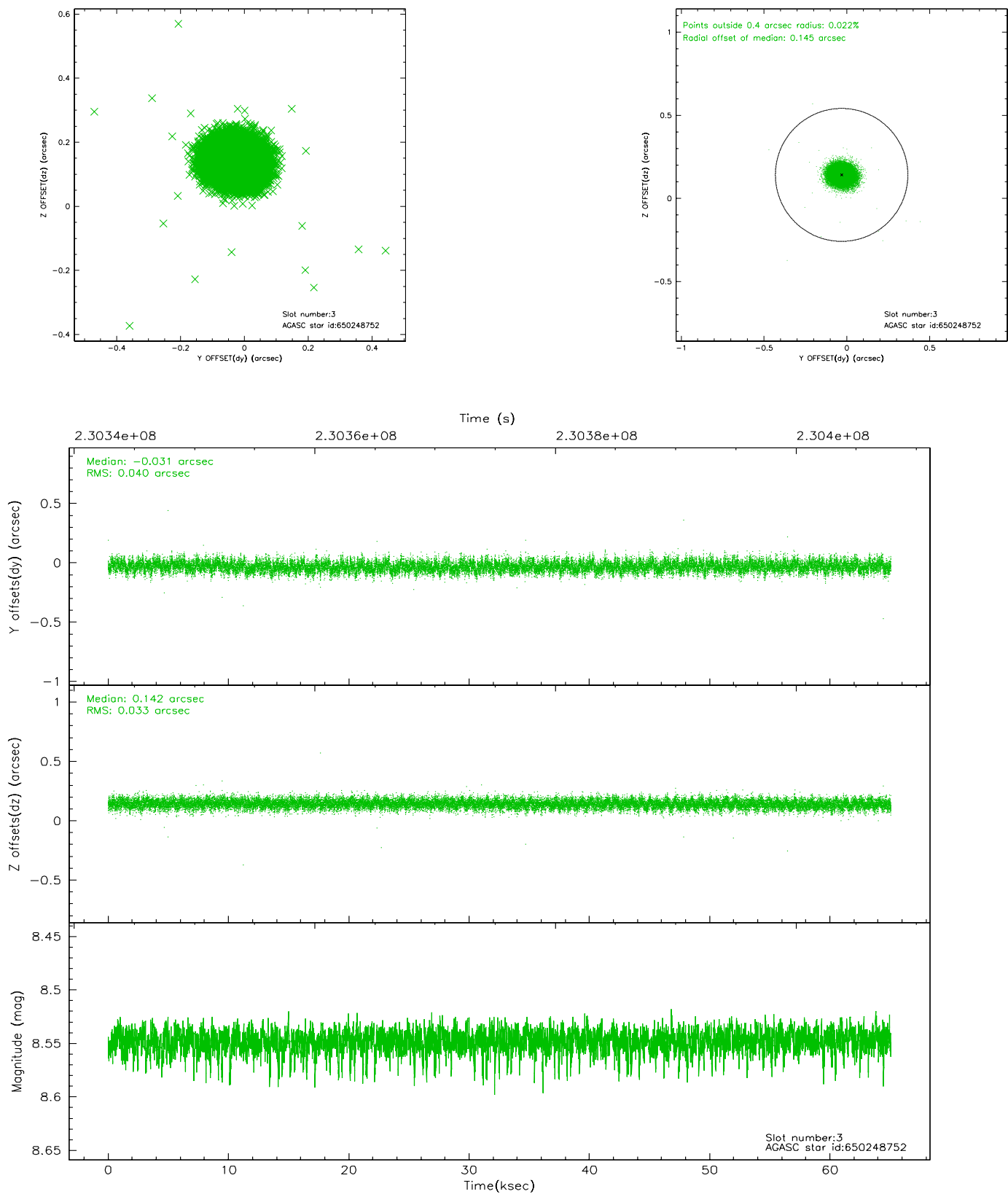


Slot Statistics

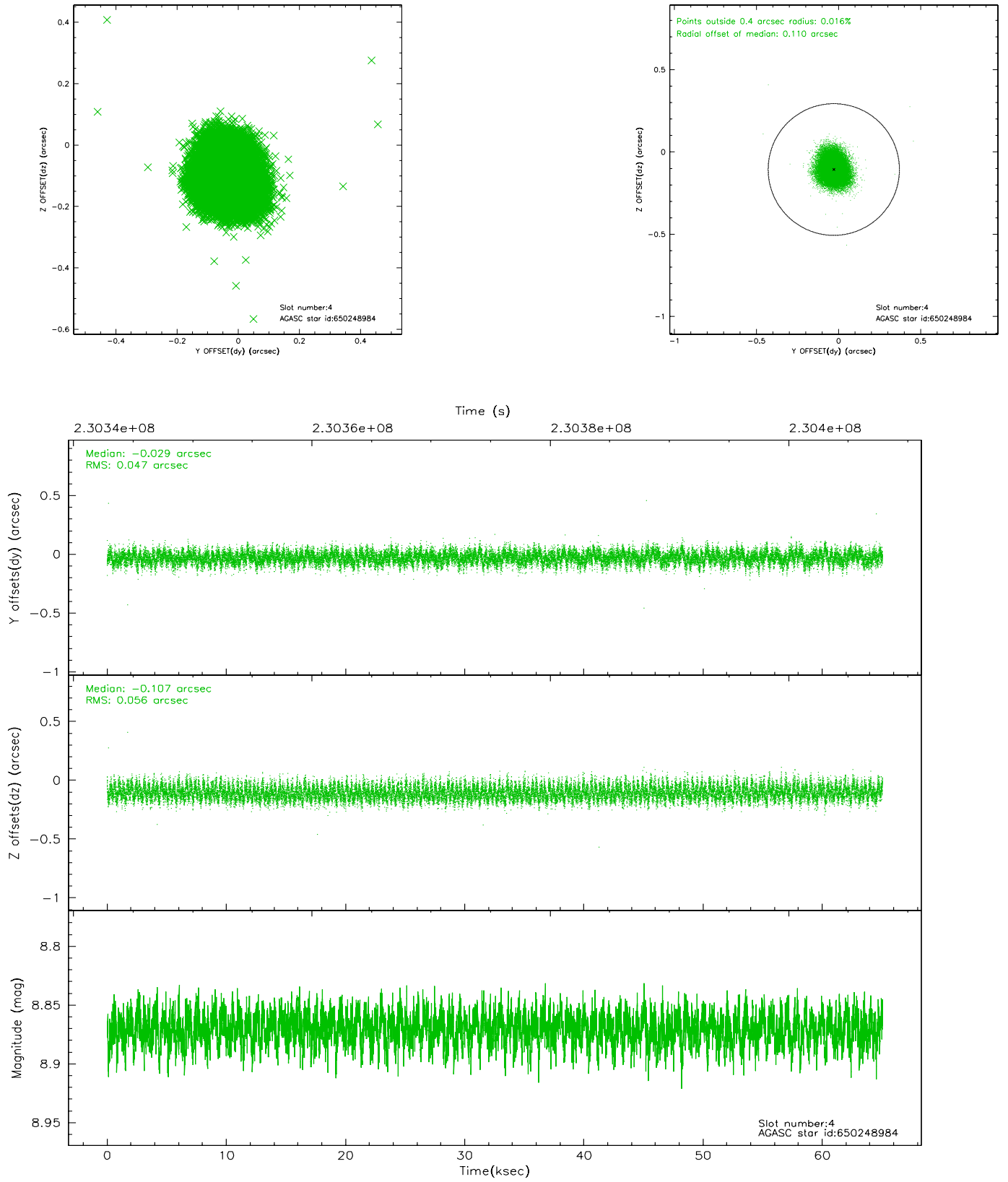
slot	status	id	mag	n_pts	med_dy	med_dz	dr1	dr2	ra	dec	mean_y	mean_z
0	FID	ACIS-I-2	7.15	15874	-0.055	-0.085	0.020	0.031	0.000000	0.000000	-759.54	-923.15
1	FID	ACIS-I-4	7.17	15871	0.096	0.061	0.014	0.052	0.000000	0.000000	2154.62	983.24
2	FID	ACIS-I-5	7.22	15874	-0.138	0.093	0.017	0.037	0.000000	0.000000	-1813.34	980.43
3	GUIDE	650248752	8.55	31734	-0.031	0.142	0.054	0.089	198.299876	-3.058510	-1598.16	1275.98
4	GUIDE	650248984	8.87	31732	-0.029	-0.107	0.078	0.125	197.683115	-3.291898	471.66	120.59
5	GUIDE	650249040	9.32	31718	0.070	0.056	0.086	0.141	197.994714	-3.007393	-1032.87	317.71
6	GUIDE	650251064	8.36	31741	-0.015	0.109	0.062	0.098	197.822546	-3.915433	1866.91	1948.66
7	GUIDE	650254416	6.89	31745	0.007	-0.200	0.053	0.086	198.338645	-3.494561	-486.06	2392.49

2.4 Star Slots

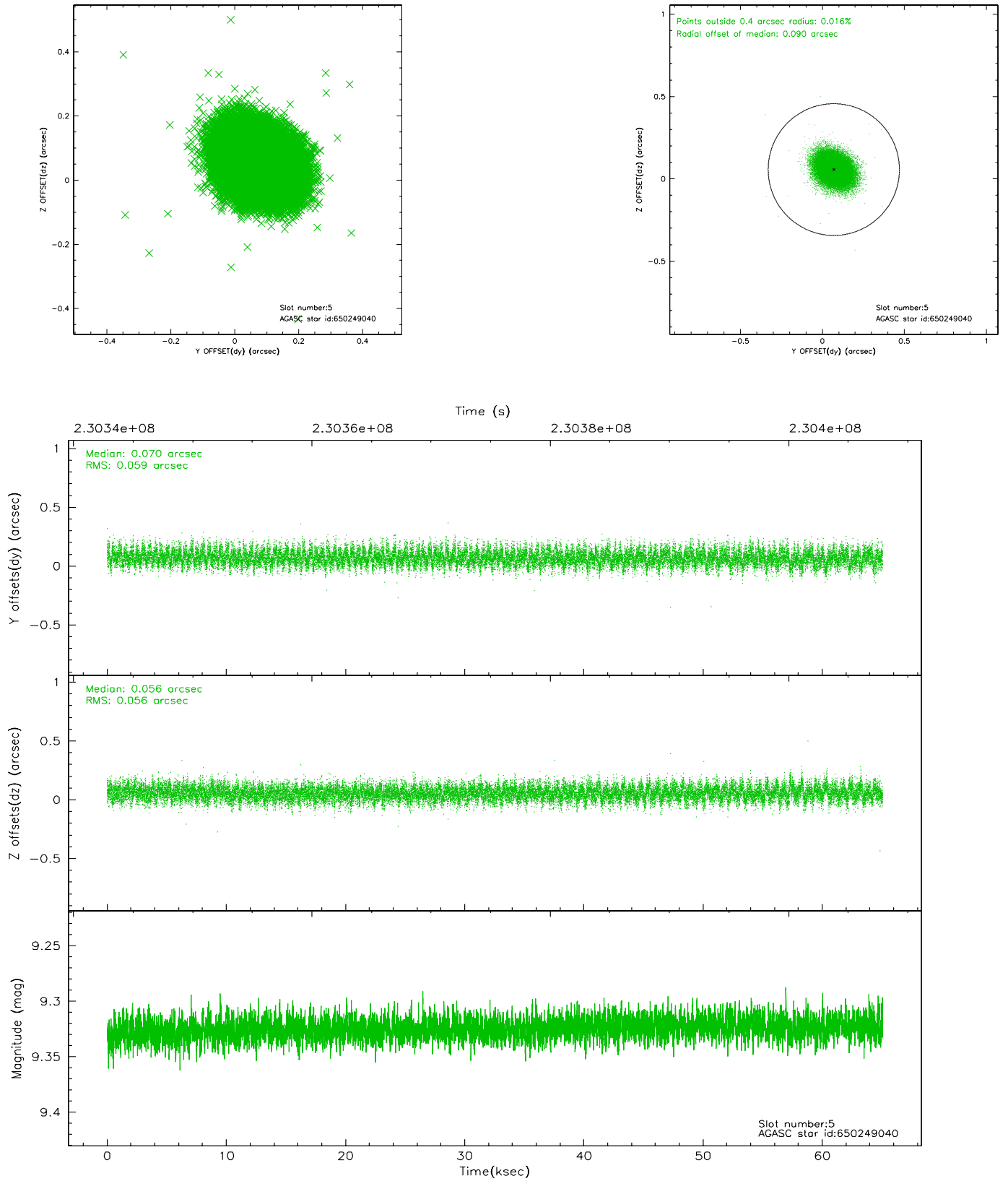
2.4.1 Slot 3



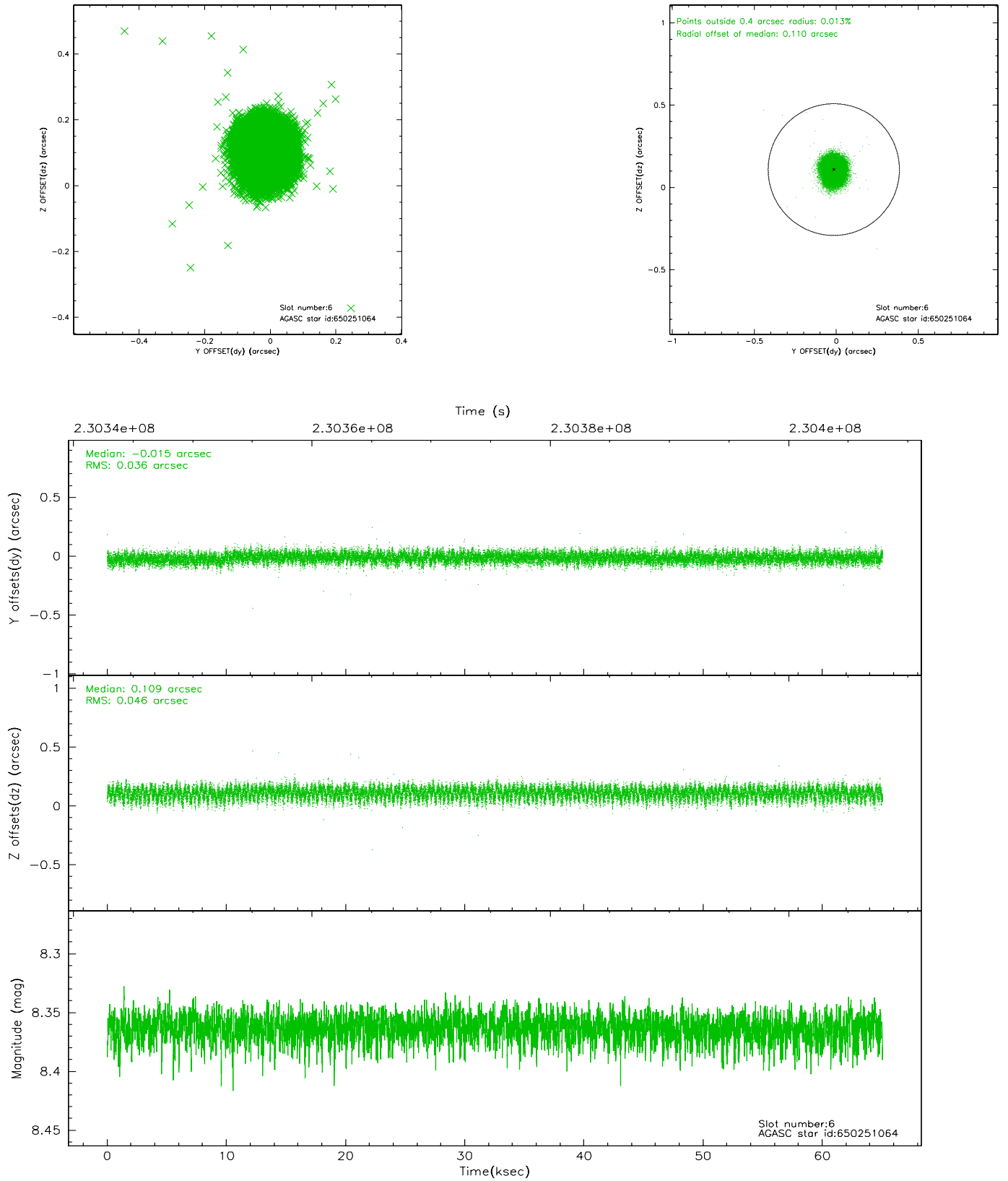
2.4.2 Slot 4



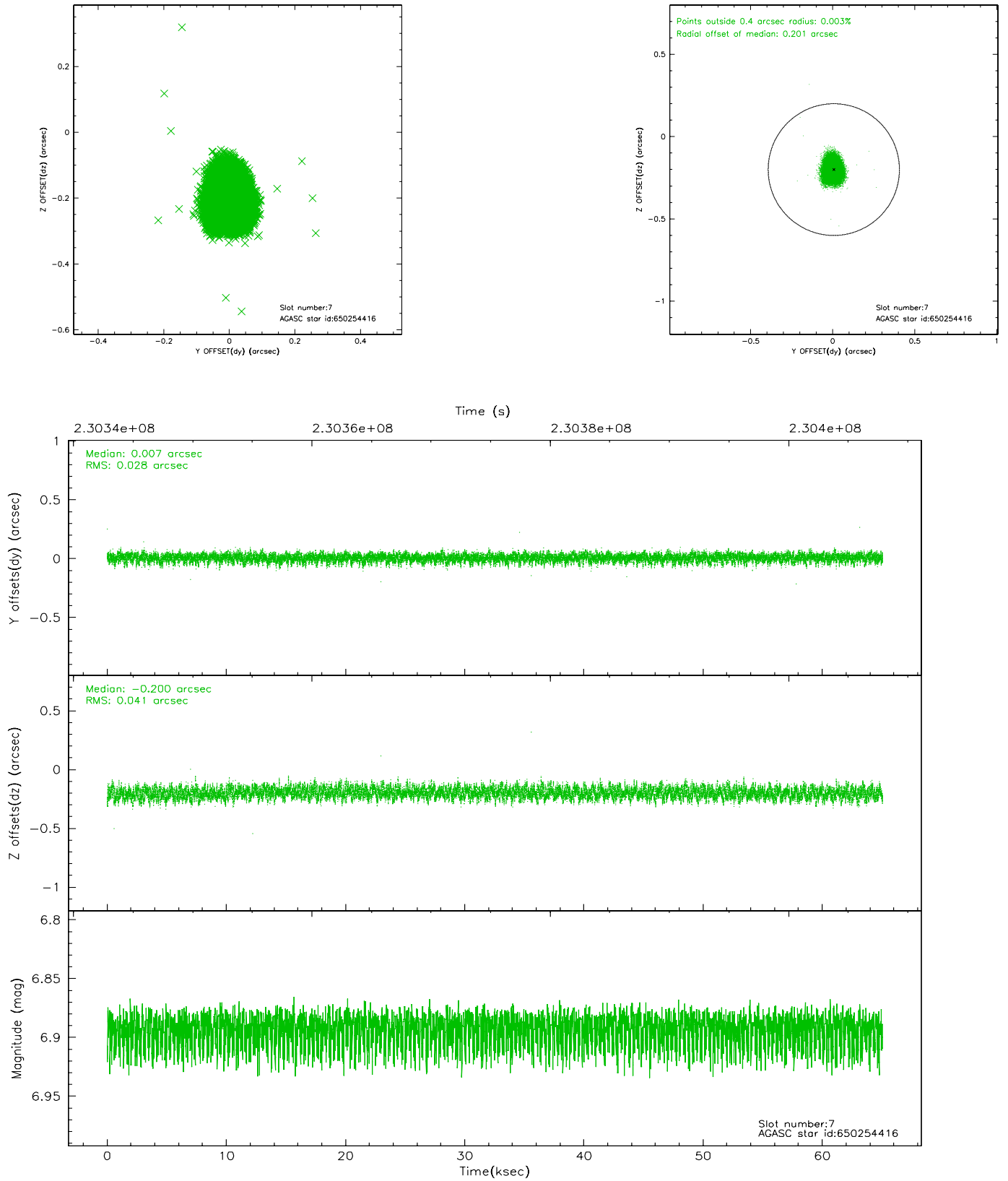
2.4.3 Slot 5



2.4.4 Slot 6

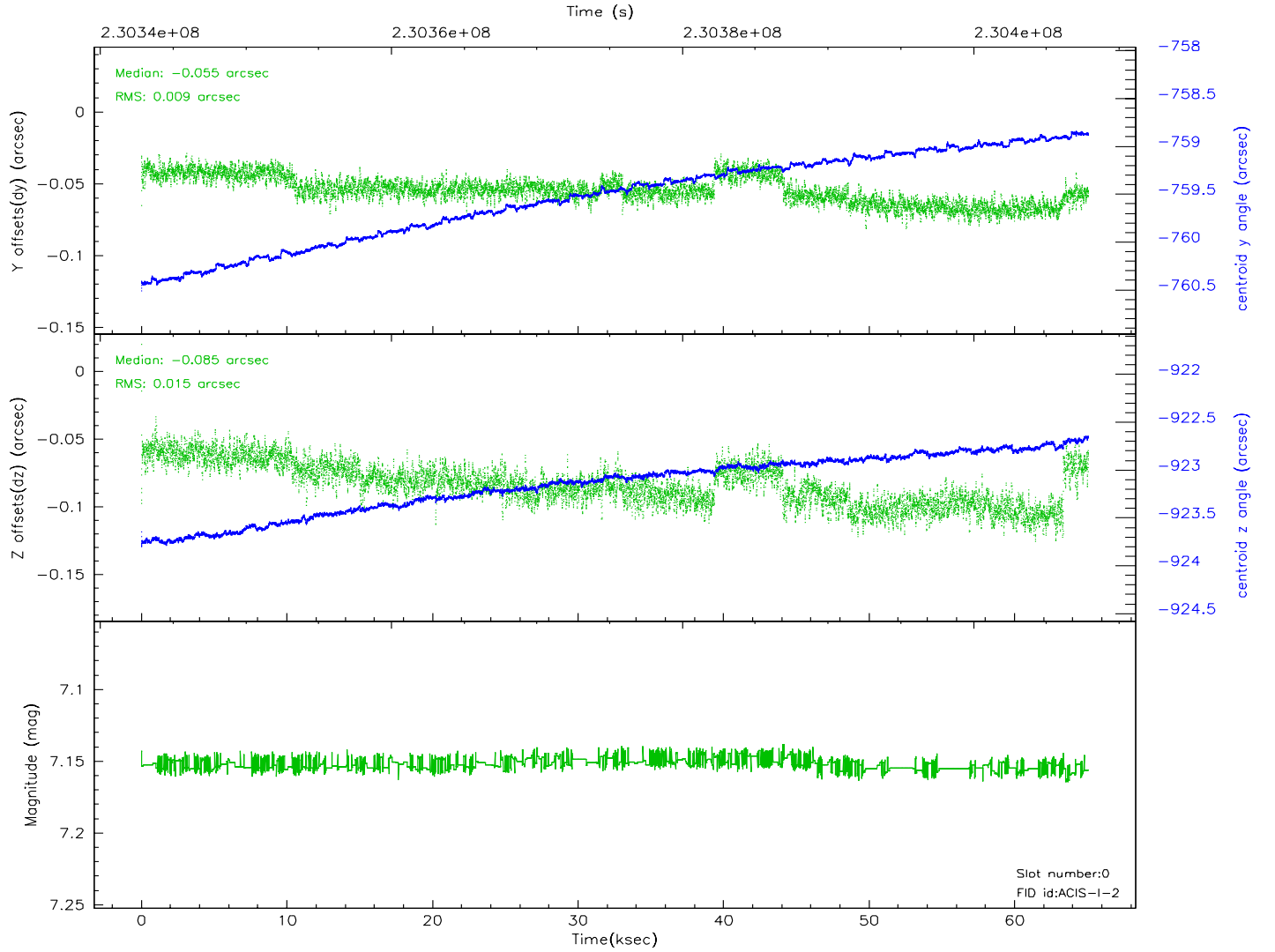
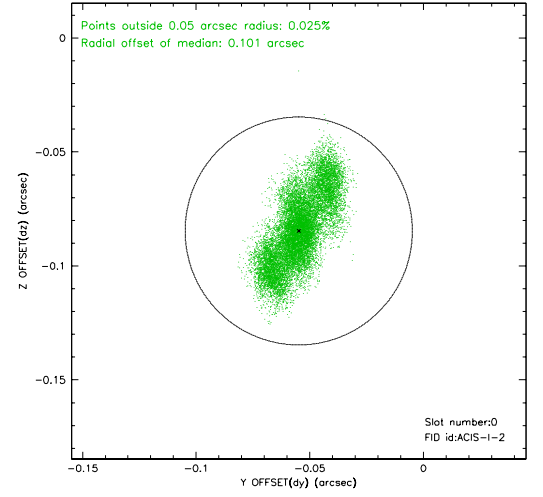
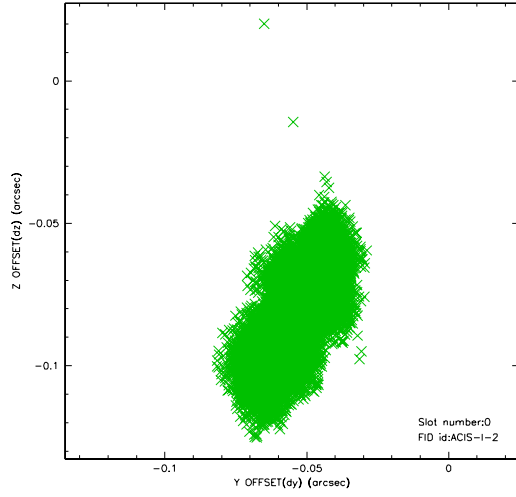


2.4.5 Slot 7

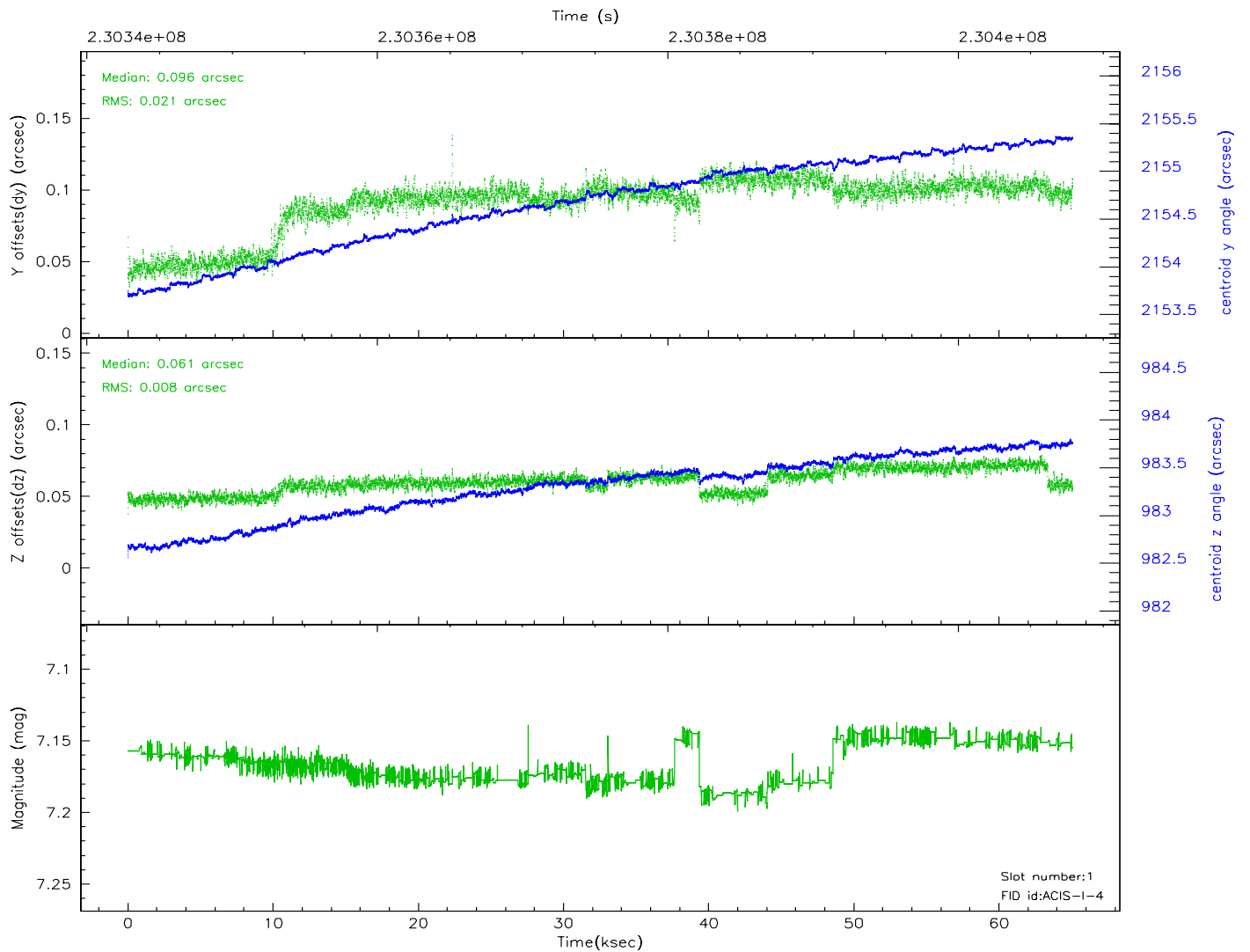
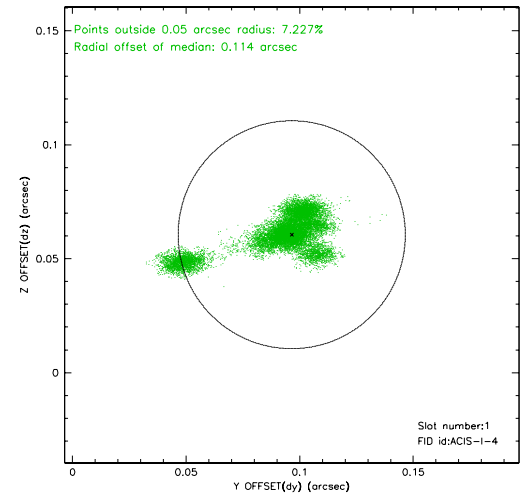
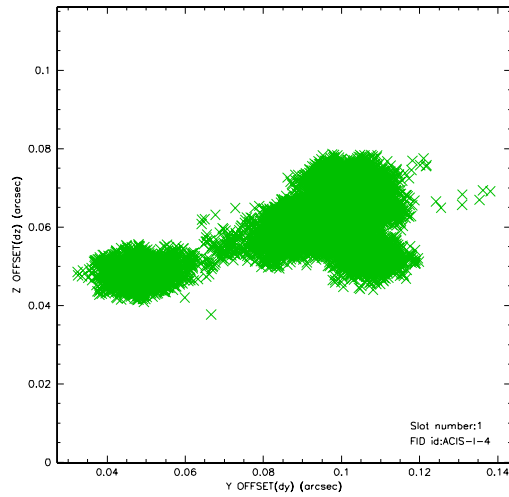


2.5 FID Slots

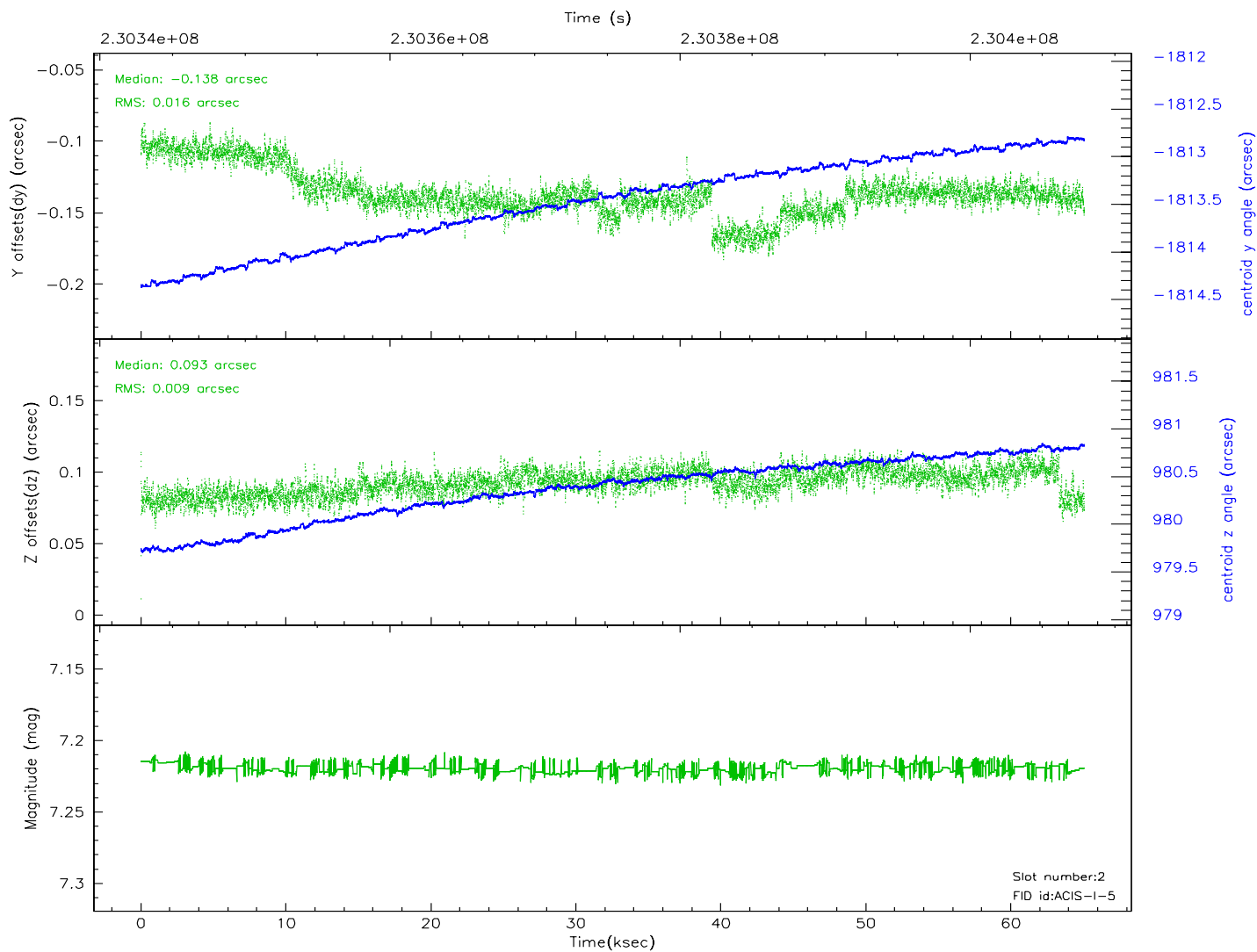
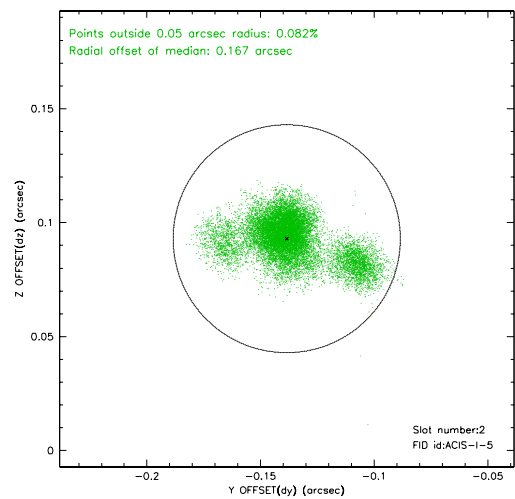
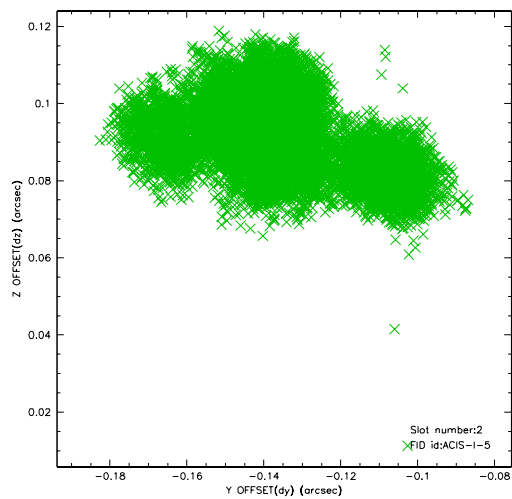
2.5.1 Slot 0



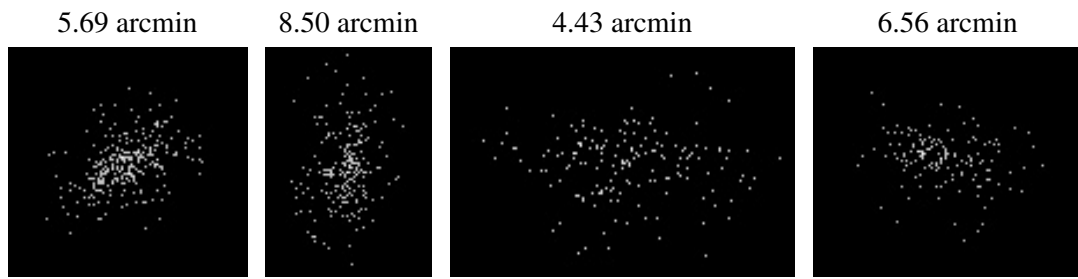
2.5.2 Slot 1



2.5.3 Slot 2



3 Point Sources



A Summary

A.1 Status

V&V Scientist	Jen Lauer
V&V Date (YYYY-MM-DD)	2006.03.02
V&V Edition	1
V&V Disposition and Status	OK
V&V Charge Time	64.04281

A.2 Comments

The ACIS focal plane temperature is above the calibration limits for the first 6ksec of the observation.