

V&V Reference Report

L2 ASCDS Version : 7.6.7.1

Observation 6108 - L2 Version 002
Chandra X-Ray Center

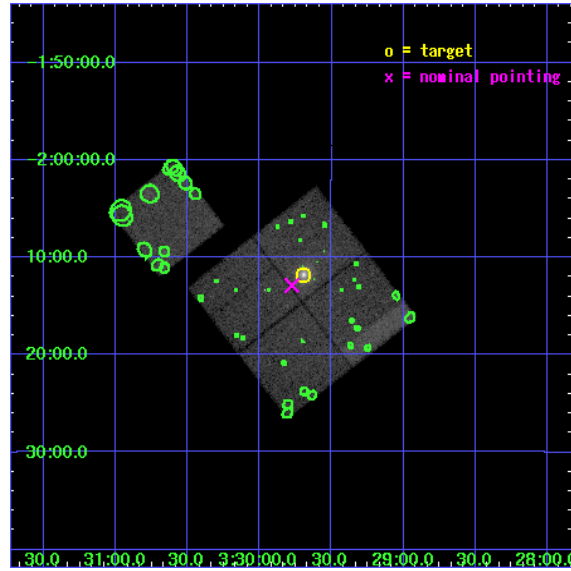
L2 Processing Date : Apr 8 2006

Contents

1	Front	2
2	OBI	3
2.1	OBI	3
2.1.1	Images	3
2.1.2	Bias	3
2.1.3	Parameters	4
2.1.4	Events	4
2.2	Compared Parameters	5
2.3	Aspect	6
2.4	Star Slots	9
2.4.1	Slot 3	9
2.4.2	Slot 4	10
2.4.3	Slot 5	11
2.4.4	Slot 6	12
2.4.5	Slot 7	13
2.5	FID Slots	14
2.5.1	Slot 0	14
2.5.2	Slot 1	15
2.5.3	Slot 2	16
3	Point Sources	17
A	Summary	18
A.1	Status	18
A.2	Comments	18

1 Front

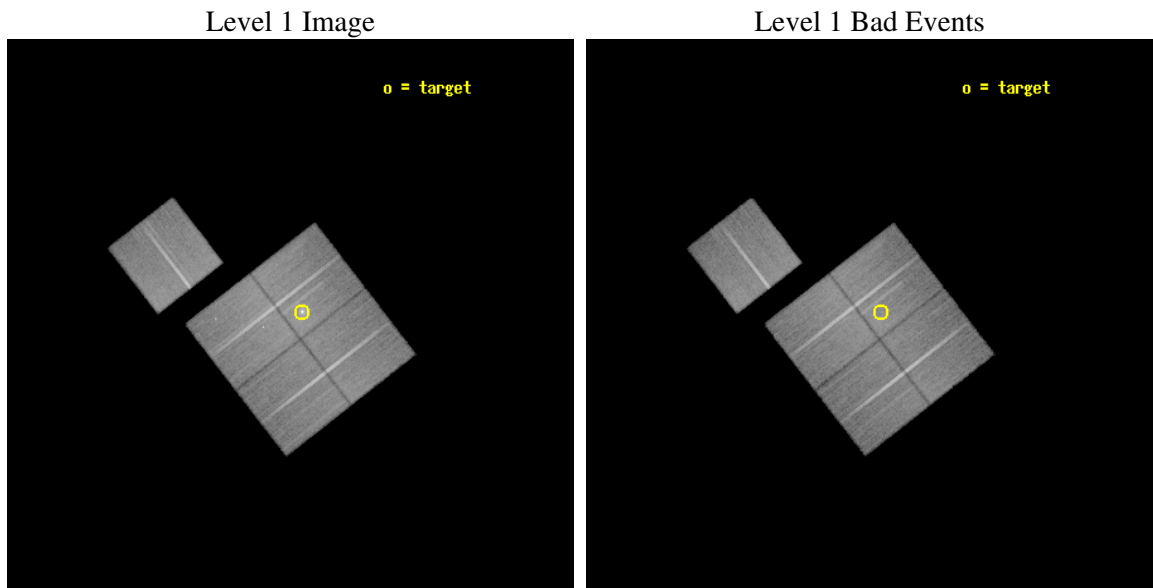
seq_num	800556
obs_id	6108
title	Probing dark energy using the X-ray gas mass fraction in dynamically relaxed galaxy clusters
observer	Dr Steven Allen
object	MACS0329.7-0212
dtcycle	0
cycle	P
ra_targ	52.423333
dec_targ	-2.196389
ra_nom	52.443984293767
dec_nom	-2.2147927956586
roll_nom	322.18129441222
revision	2
ontime	40169.758912623
livetime	39644.911439883
ontime0	40166.618001968
ontime1	40166.61793232
ontime2	40160.335981637
ontime3	40169.758912623
ontime6	40169.759002149
l2events	145529



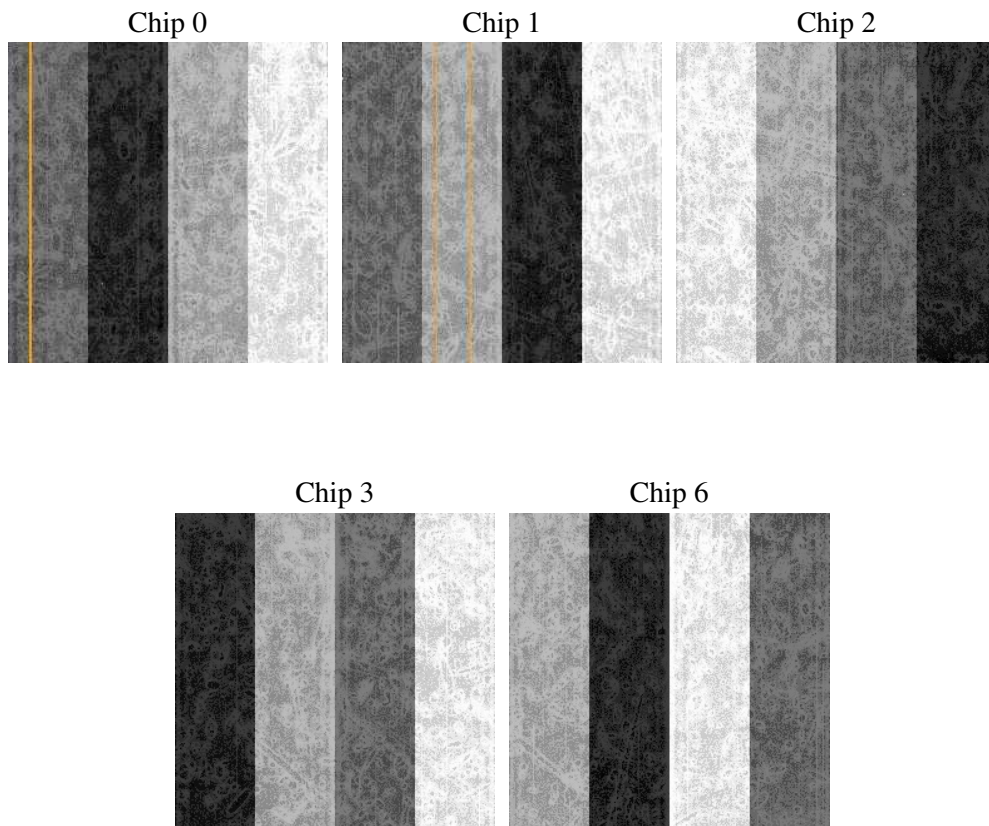
2 OBI

2.1 OBI

2.1.1 Images



2.1.2 Bias



2.1.3 Parameters

obi_num	0
ascdsver	7.6.7.1
caldbver	3.2.1
date	2006-04-08T13:54:52
revision	2

sched_exp_time	40000.000000
ontime	41684.391804844
ontime0	41681.250894189
ontime1	41678.109824359
ontime2	41674.968873858
ontime3	41684.391804844
ontime6	41684.391874433
l1events	1472327

2.1.4 Events

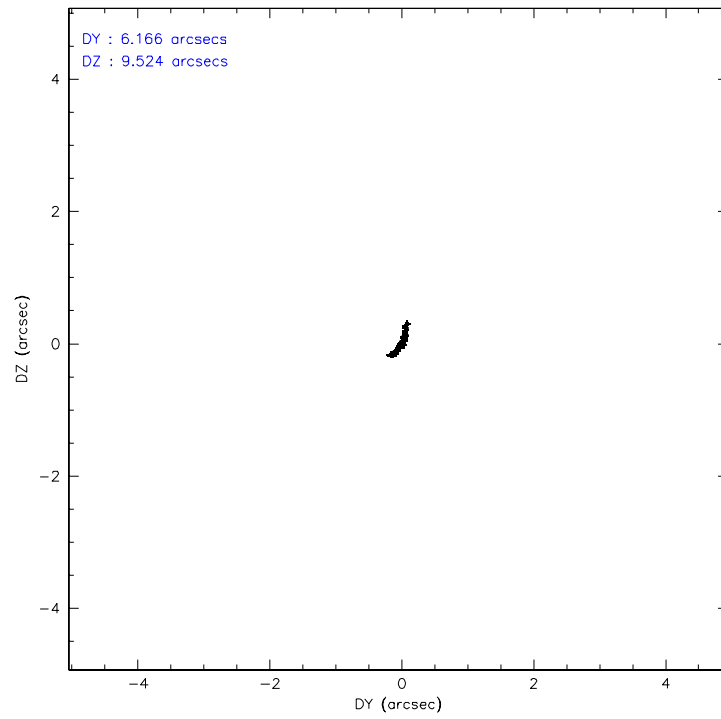
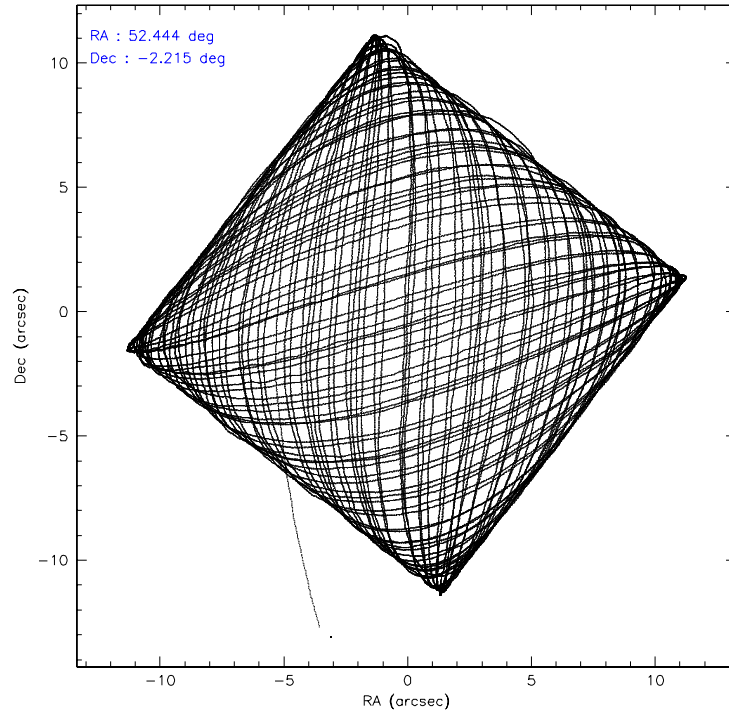
	ccd 0	ccd 1	ccd 2	ccd 3	ccd 6
level 1 events	265213	276429	321209	308803	300673
rejected events	232339	239338	283148	268758	264246
rejected %	87%	86%	88%	87%	87%

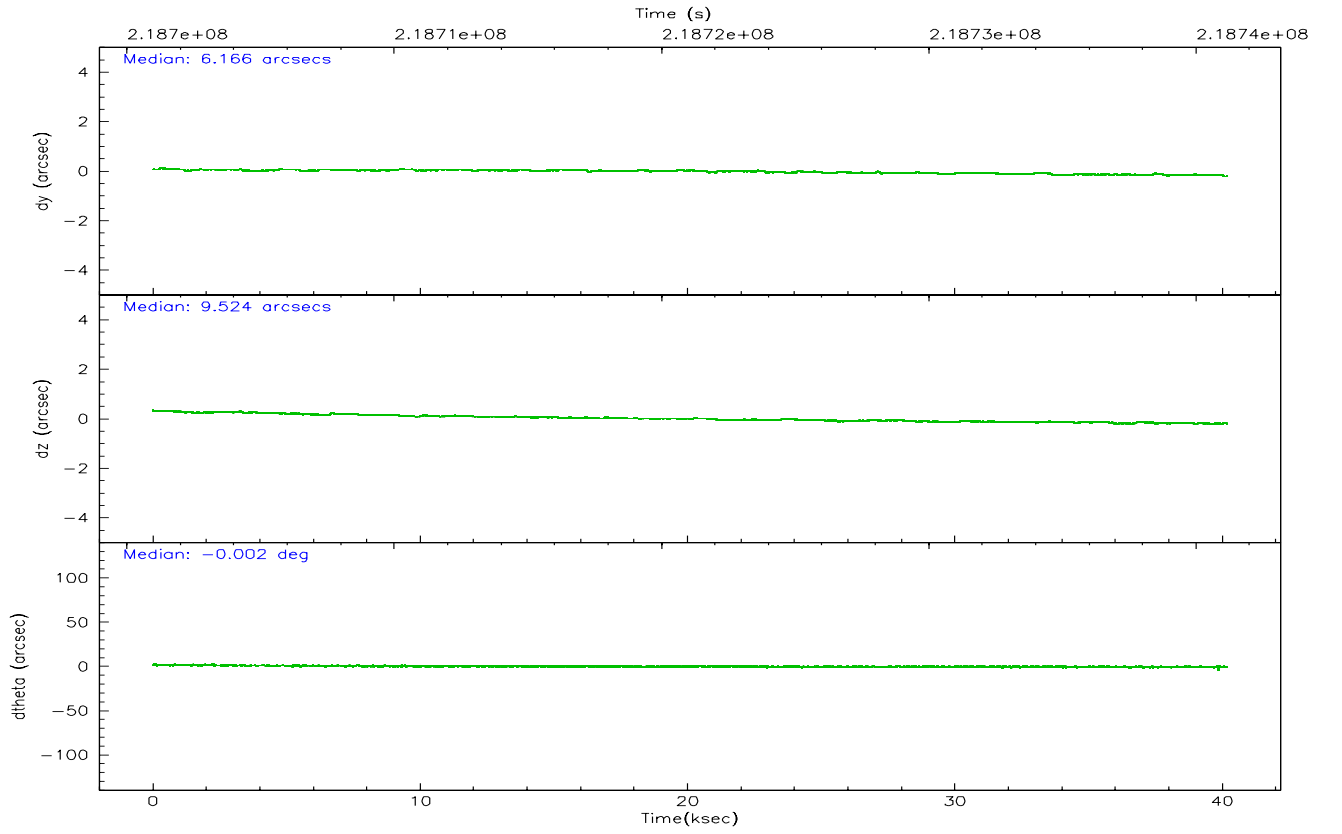
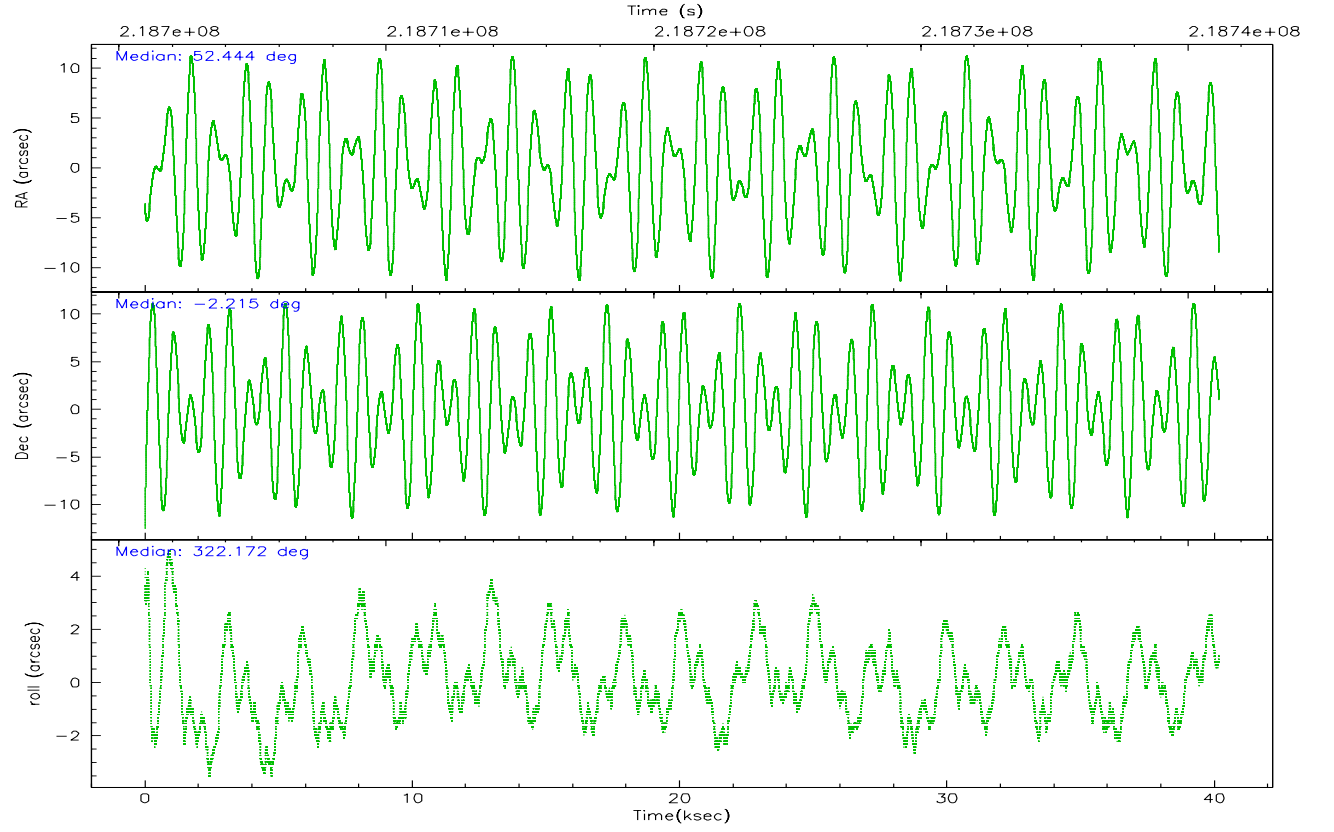
	ccd 0	ccd 1	ccd 2	ccd 3	ccd 6
grade 0 events	15249	16138	19026	22158	18205
	5%	5%	5%	7%	6%
grade 1 events	205	151	261	211	171
	0%	0%	0%	0%	0%
grade 2 events	7881	8652	8298	7284	7631
	2%	3%	2%	2%	2%
grade 3 events	3049	3656	3000	3341	3119
	1%	1%	0%	1%	1%
grade 4 events	2845	3357	4106	3329	3095
	1%	1%	1%	1%	1%
grade 5 events	8864	9615	8658	10338	9994
	3%	3%	2%	3%	3%
grade 6 events	5005	6694	5041	5103	5732
	1%	2%	1%	1%	1%
grade 7 events	222115	228166	272819	257039	252726
	83%	82%	84%	83%	84%

2.2 Compared Parameters

Parameter	Planned	Actual	Parameter	Planned	Actual
Instrument	ACIS	ACIS	Obspar format version number	6	6
Detector	ACIS-01236	ACIS-01236	Obspar file type	PREDICTED	ACTUAL
Grating	NONE	NONE	Obspar update status	NONE	UPDATED
Data mode	VFAINT	VFAINT	On-chip summing requested	N	N
Observation mode	POINTING	POINTING	Subarray requested	NONE	NONE
Pointing RA	52.416832	52.4439842937668	Alternating exposures requested	N	N
Pointing Dec	-2.211197	-2.214792795658625	Primary exposure time	0.000000	3.1
Pointing Roll	321.971556	322.1812944122248			
SIM focus pos (mm)	-0.782348	-0.7809083437167272			
SIM defocus (mm)	0	0.001439871863259334			
SIM translation stage pos (mm)	-229.442463	-229.4438428438578			
SIM translation stage offset (mm)	-4.15	-4.148610159071865			
Observation start time	218701163.184000	218699417.88681			
Observation start date	2004-12-06T06:18:19	2004-12-06T05:50:17			
Observation end time	218741163.184000	218742090.17623			
Observation end date	2004-12-06T17:24:59	2004-12-06T17:41:30			
Read mode	TIMED	TIMED			

2.3 Aspect



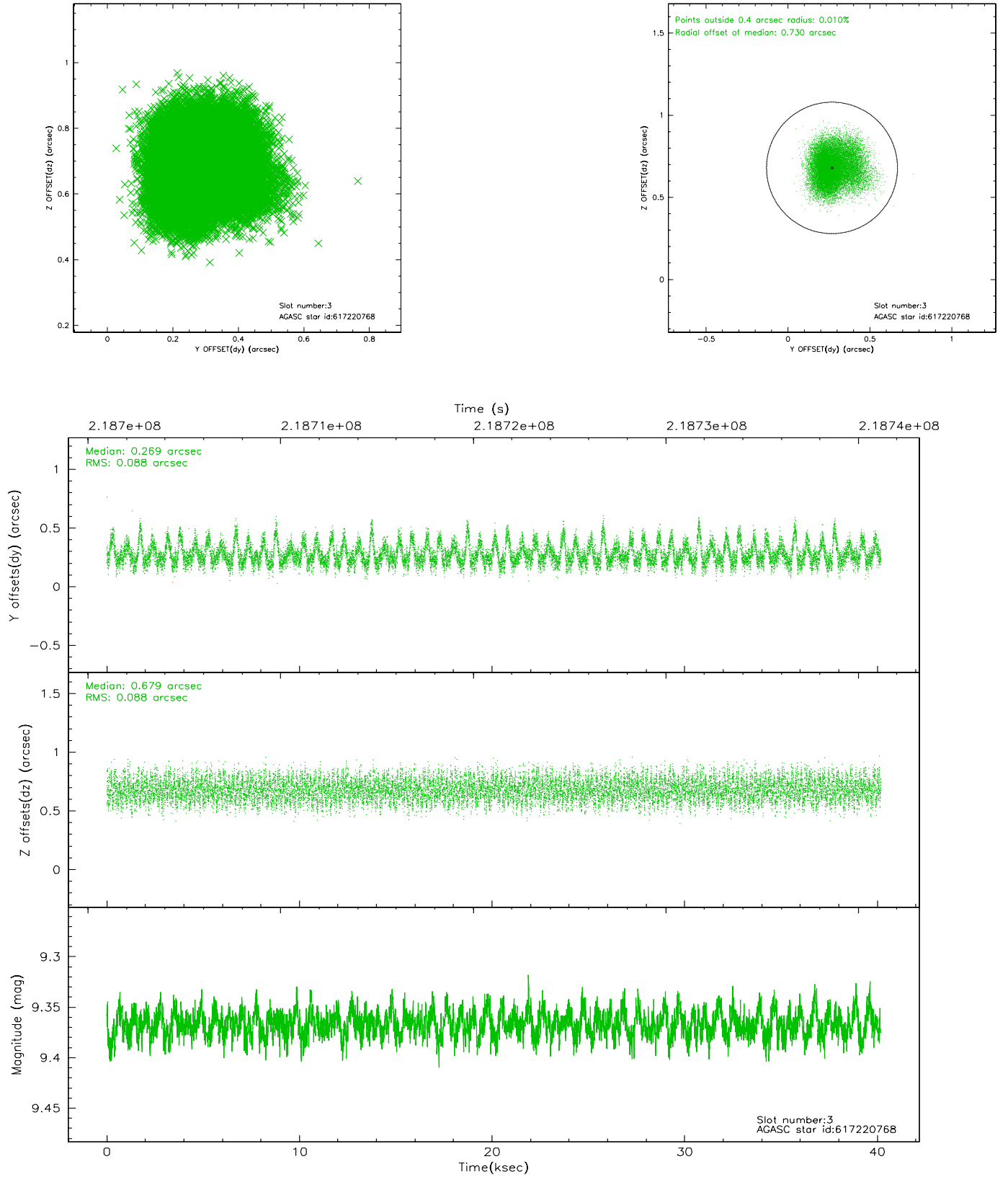


Slot Statistics

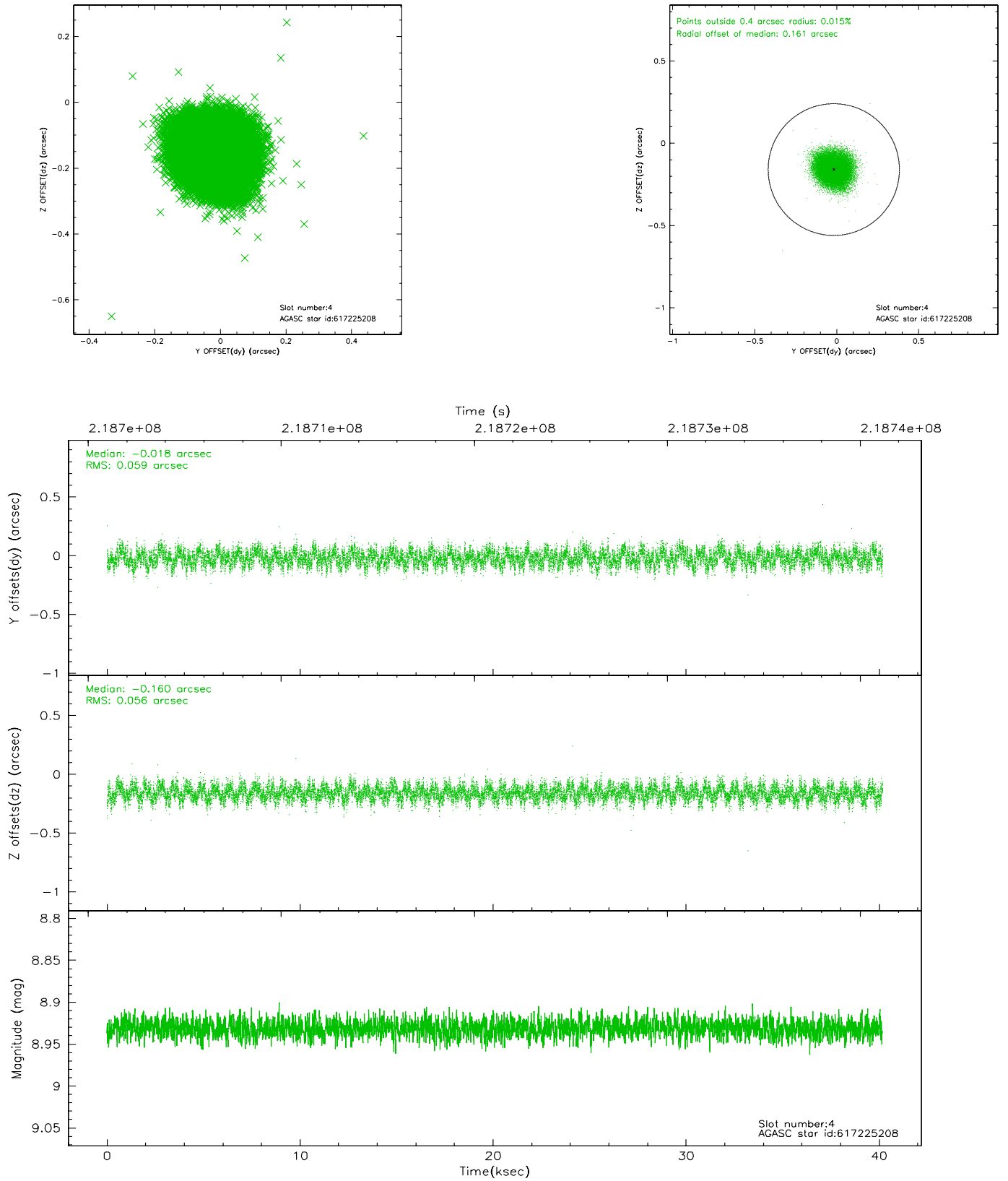
slot	status	id	mag	n_pts	med_dy	med_dz	dr1	dr2	ra	dec	mean_y	mean_z
0	FID	ACIS-I-1	7.24	9799	0.031	0.011	0.008	0.015	0.000000	0.000000	933.51	-918.11
1	FID	ACIS-I-5	7.23	9800	-0.175	0.050	0.006	0.011	0.000000	0.000000	-1814.79	979.41
2	FID	ACIS-I-6	7.25	9800	0.052	0.010	0.008	0.013	0.000000	0.000000	399.07	1623.89
3	GUIDE	617220768	9.37	19584	0.269	0.679	0.135	0.212	52.153820	-2.297712	-552.66	-827.75
4	GUIDE	617225208	8.93	19584	-0.018	-0.160	0.088	0.136	52.402007	-1.748912	-1066.95	1277.60
5	GUIDE	618135616	9.41	19585	0.028	-0.093	0.128	0.218	52.691139	-1.780604	-177.45	1828.60
6	GUIDE	618137256	6.99	19599	-0.329	-0.174	0.047	0.075	52.673789	-1.938766	123.85	1342.02
7	GUIDE	618529600	9.55	19593	0.042	-0.250	0.120	0.190	52.561469	-2.979434	2114.16	-1858.26

2.4 Star Slots

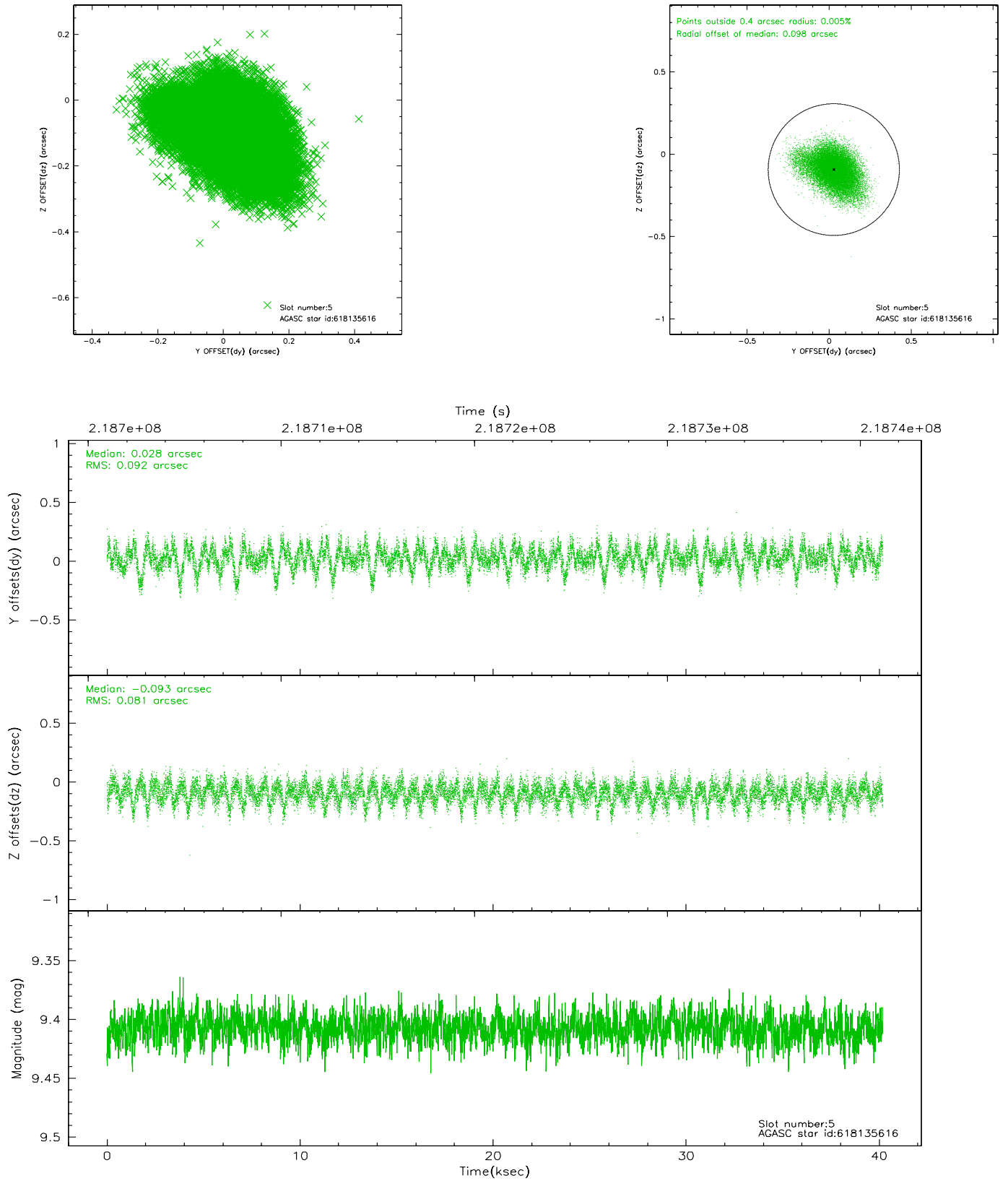
2.4.1 Slot 3



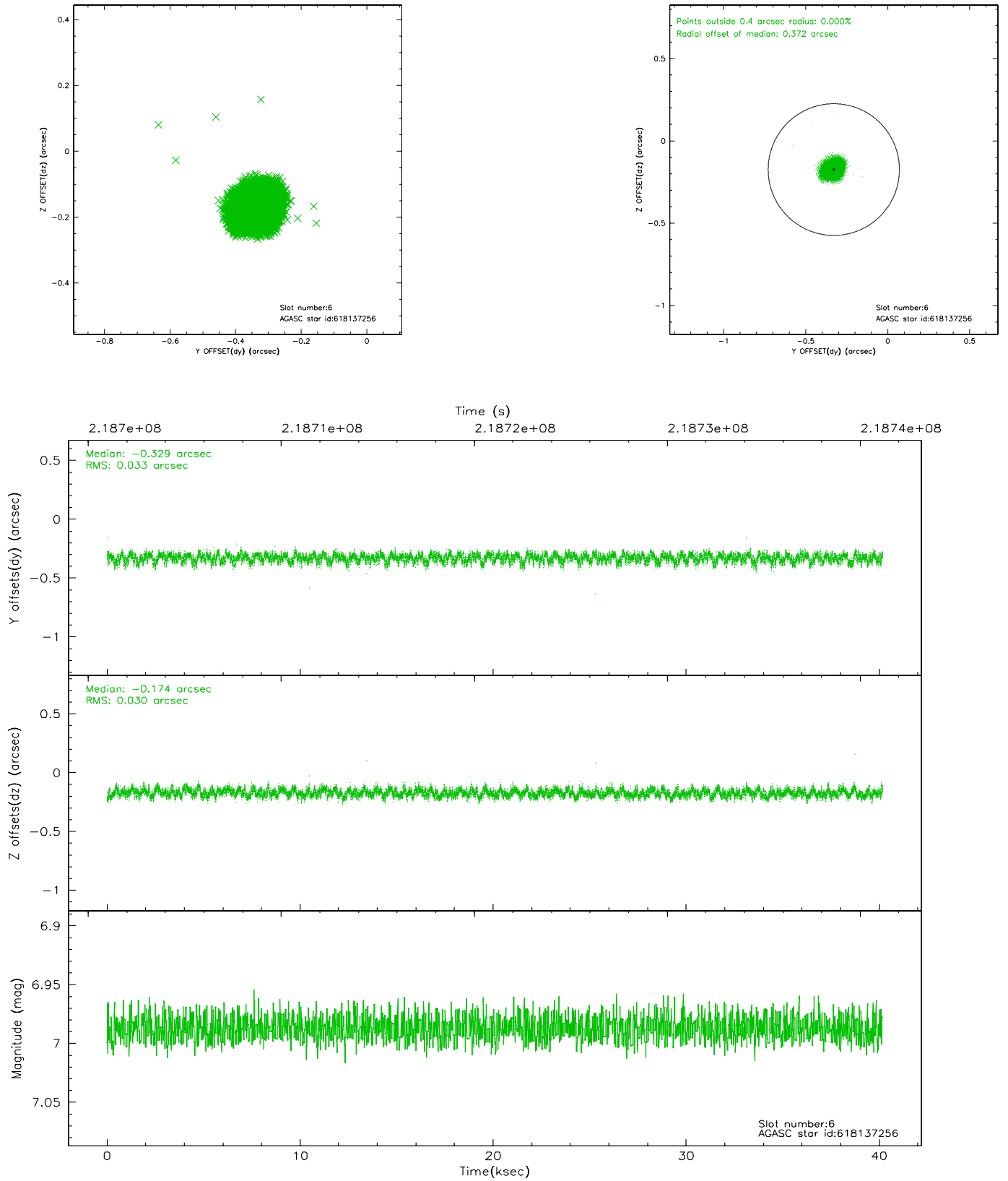
2.4.2 Slot 4



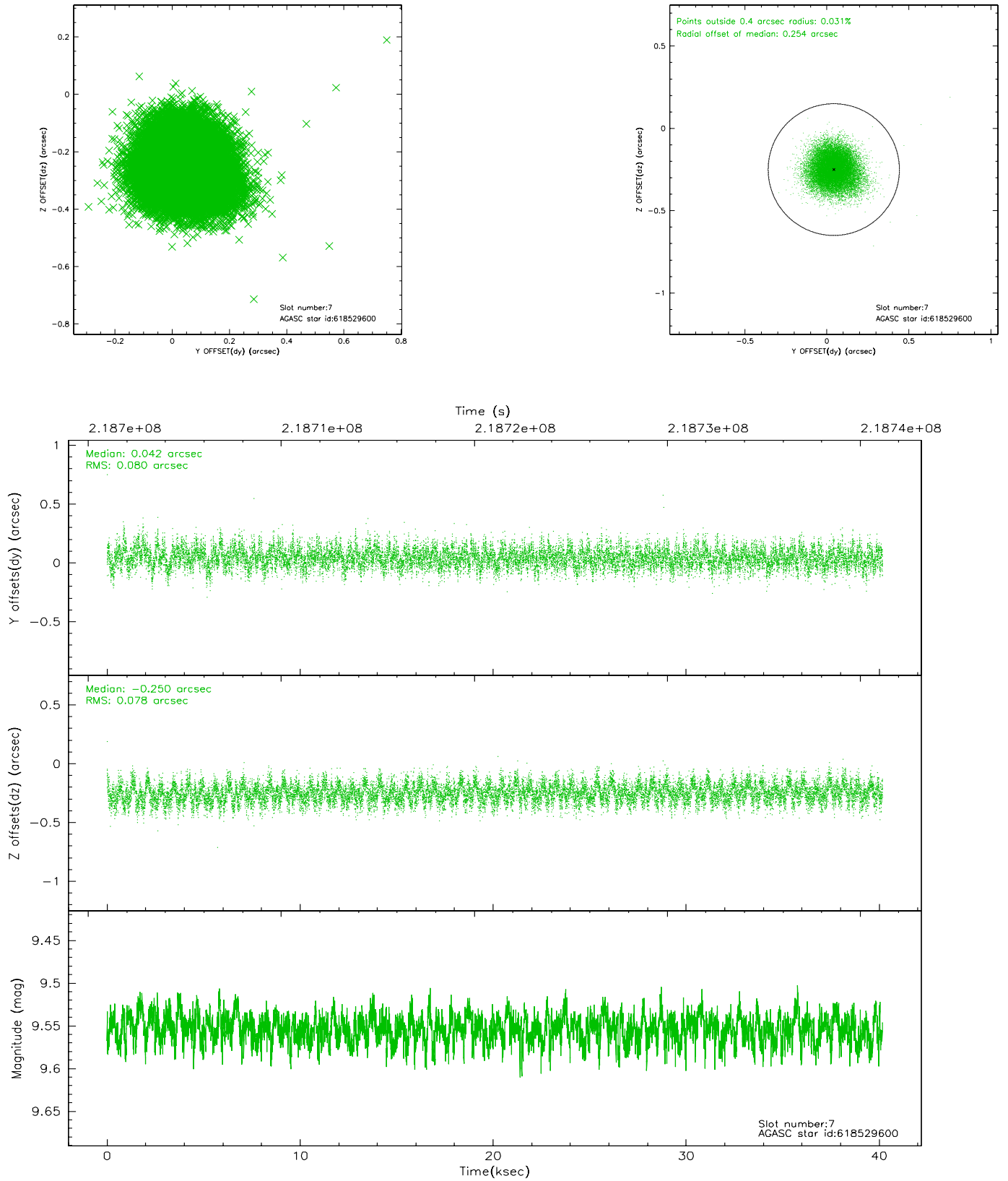
2.4.3 Slot 5



2.4.4 Slot 6

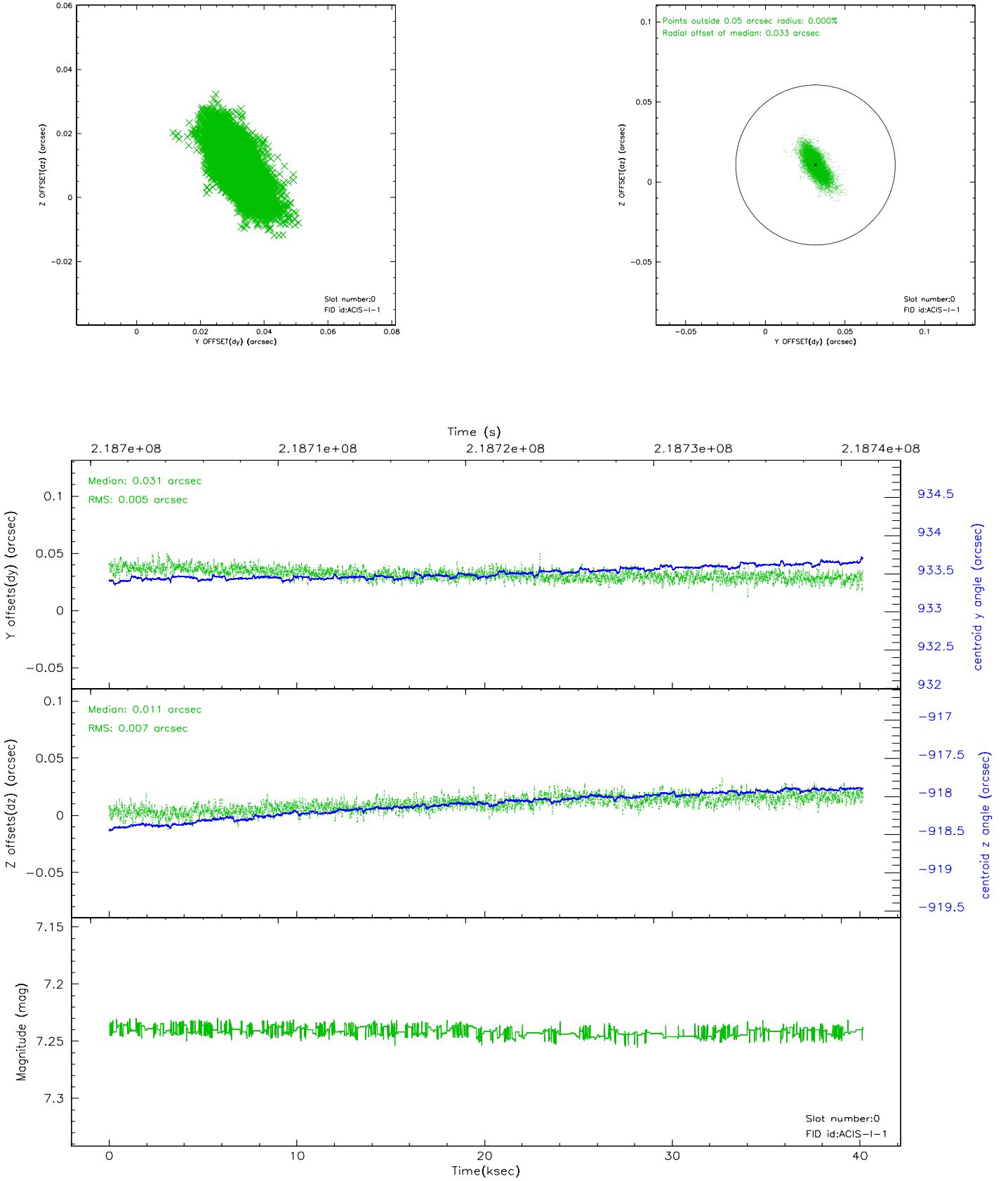


2.4.5 Slot 7

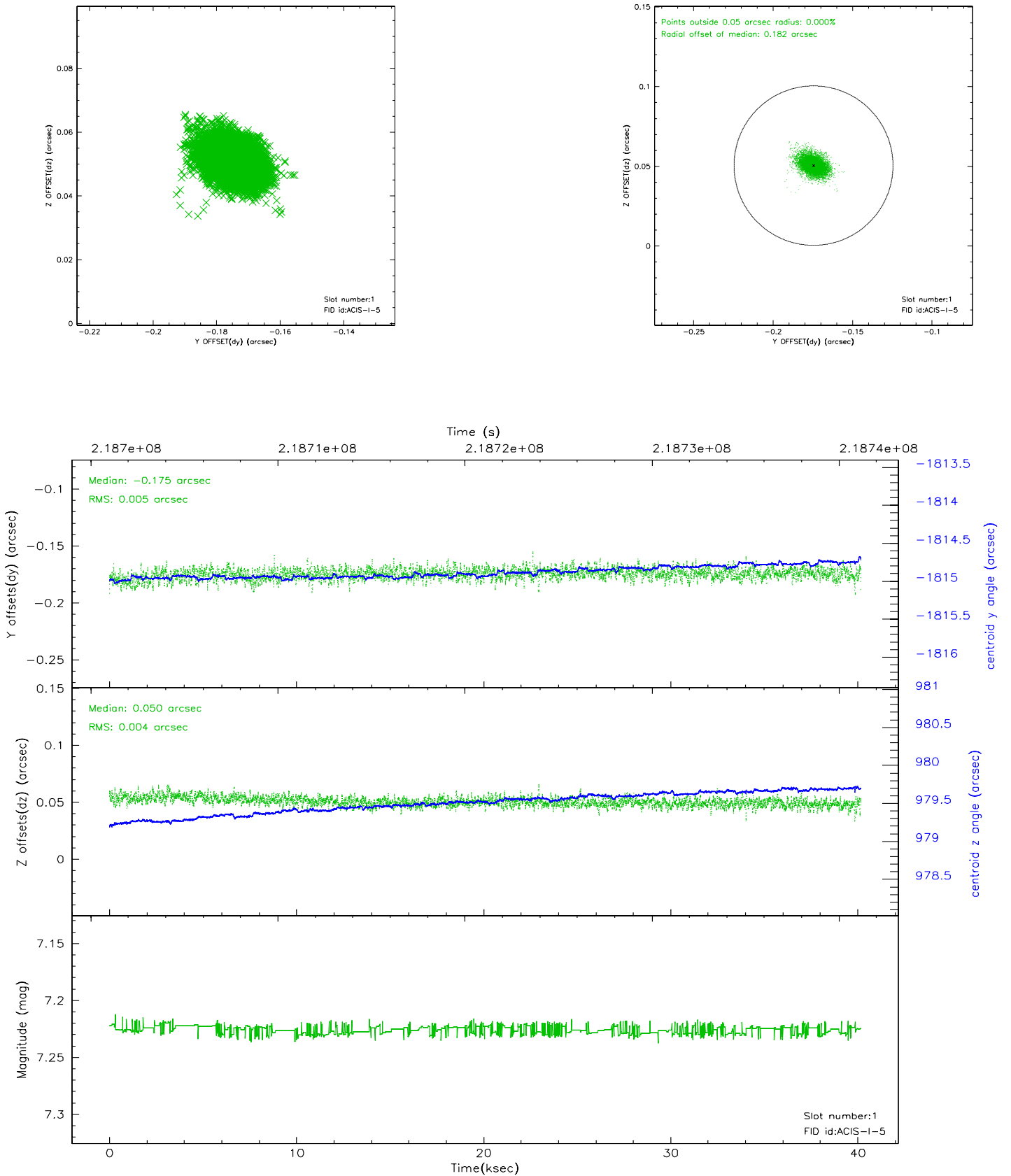


2.5 FID Slots

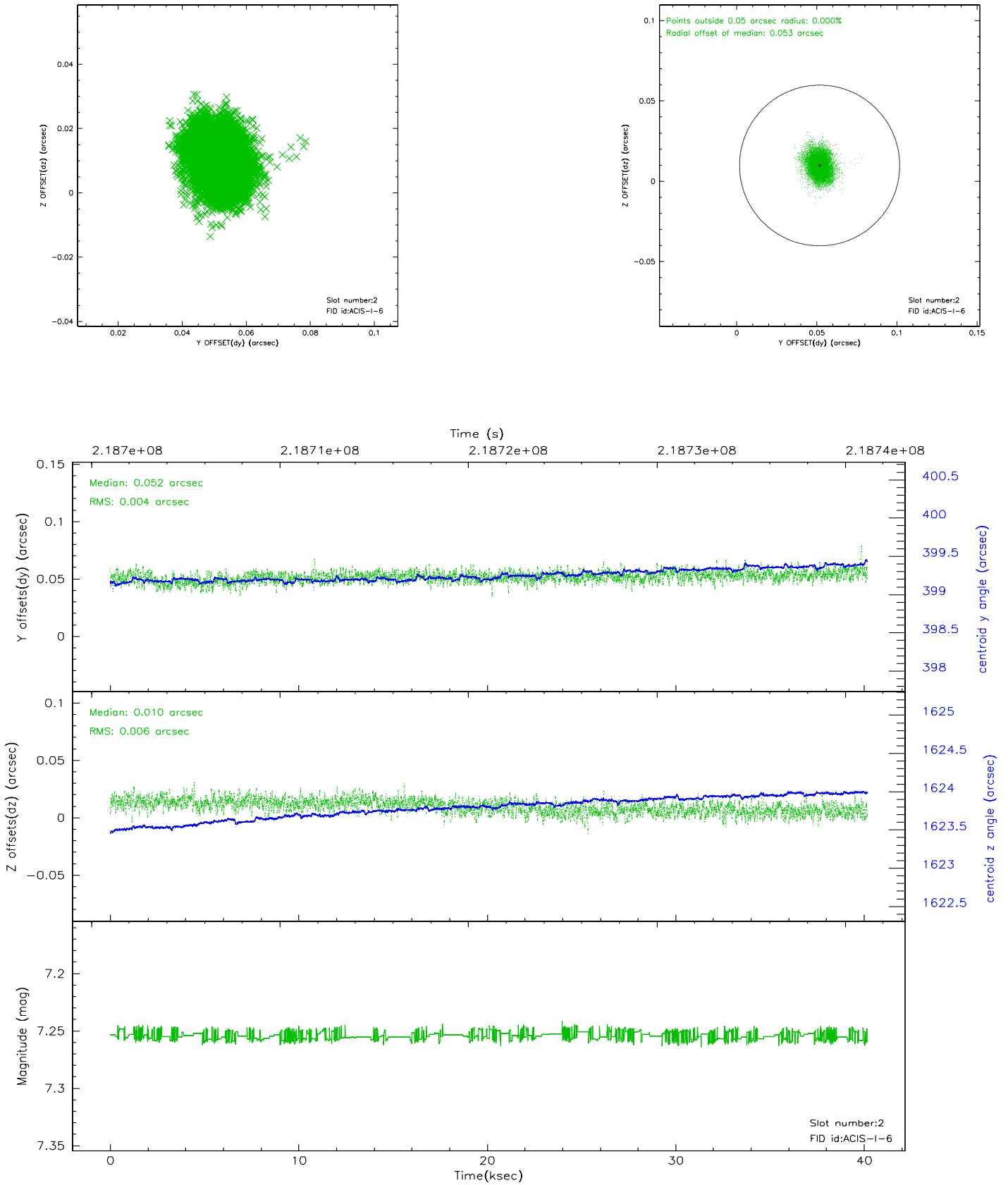
2.5.1 Slot 0



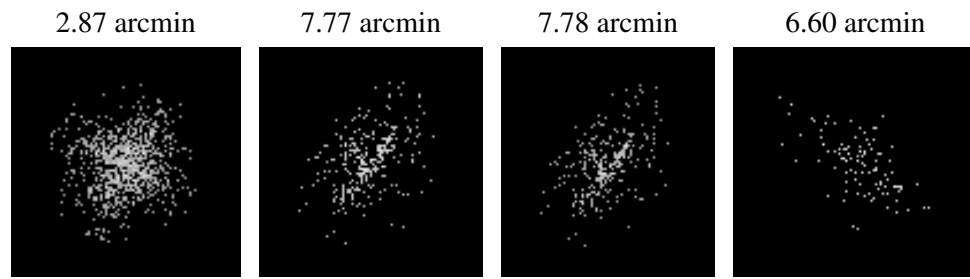
2.5.2 Slot 1



2.5.3 Slot 2



3 Point Sources



A Summary

A.1 Status

V&V Scientist	Beth Sundheim
V&V Date (YYYY-MM-DD)	2006.04.10
V&V Edition	1
V&V Disposition and Status	OK
V&V Charge Time	40.16975

A.2 Comments