

V&V Reference Report

L2 ASCDS Version : 7.6.7.1

Observation 6104 - L2 Version 001
Chandra X-Ray Center

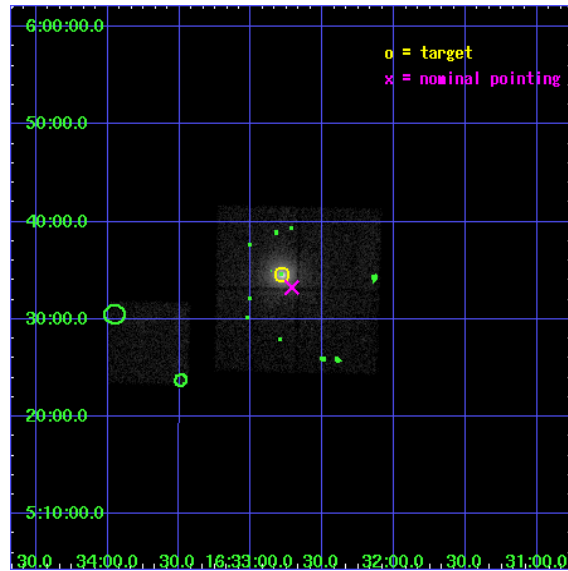
L2 Processing Date : Apr 17 2006

Contents

1	Front	2
2	OBI	3
2.1	OBI	3
2.1.1	Images	3
2.1.2	Bias	3
2.1.3	Parameters	4
2.1.4	Events	4
2.2	Compared Parameters	5
2.3	Aspect	6
2.4	Star Slots	9
2.4.1	Slot 3	9
2.4.2	Slot 4	10
2.4.3	Slot 5	11
2.4.4	Slot 6	12
2.4.5	Slot 7	13
2.5	FID Slots	14
2.5.1	Slot 0	14
2.5.2	Slot 1	15
2.5.3	Slot 2	16
3	Point Sources	17
A	Summary	18
A.1	Status	18
A.2	Comments	18

1 Front

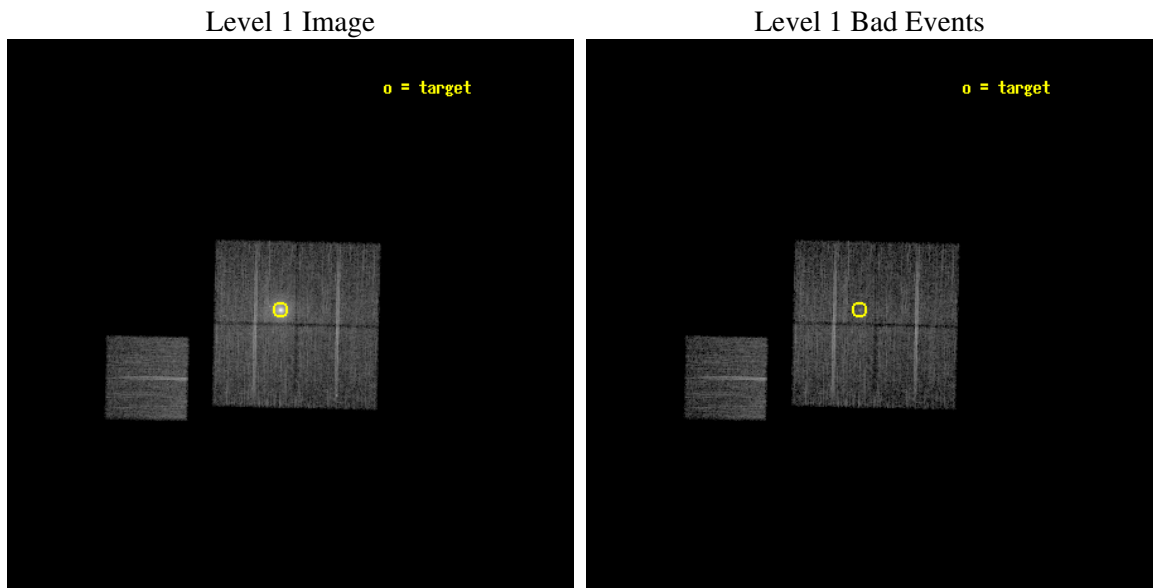
seq_num	800552
obs_id	6104
title	Probing dark energy using the X-ray gas mass fraction in dynamically relaxed galaxy clusters
observer	Dr Steven Allen
object	Abell 2204
dtcycle	0
cycle	P
ra_targ	248.196667
dec_targ	5.575583
ra_nom	248.17850683065
dec_nom	5.5543621712642
roll_nom	271.29407498123
revision	2
ontime	9737.0999812782
livetime	9609.8776016741
ontime0	9737.0999812782
ontime1	9737.0999812782
ontime2	9737.0999812782
ontime3	9737.0999812782
ontime6	9730.8180009723
l2events	67058



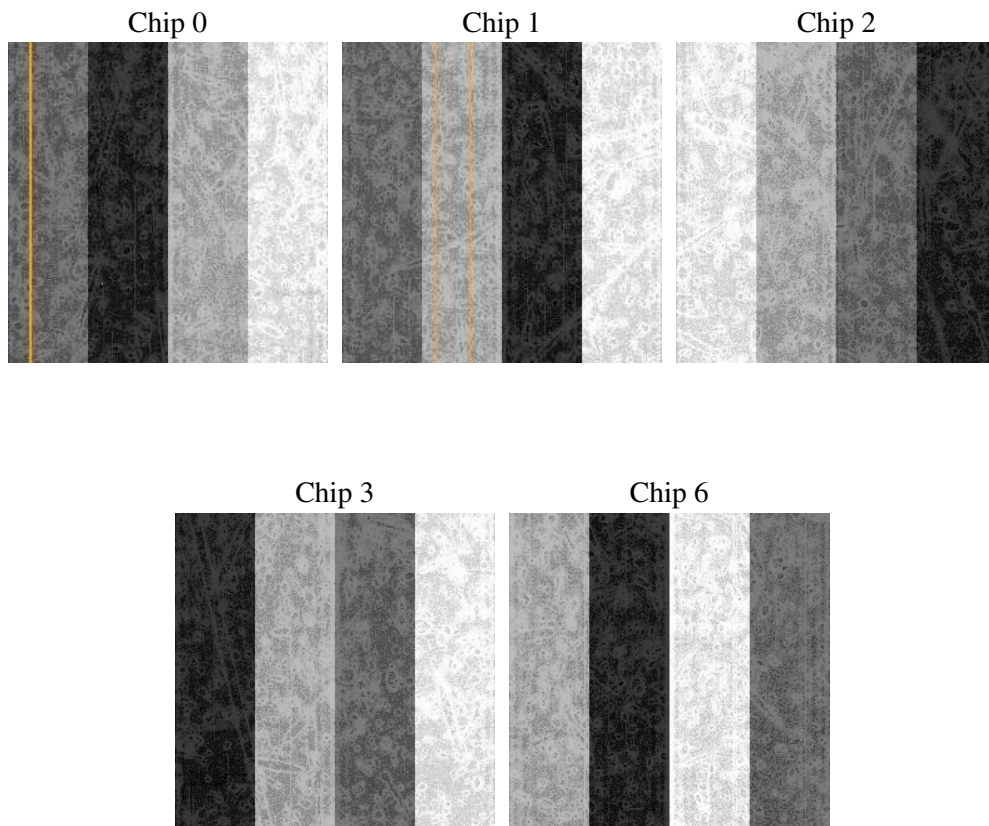
2 OBI

2.1 OBI

2.1.1 Images



2.1.2 Bias



2.1.3 Parameters

obi_num	0
ascdsver	7.6.7.1
caldbver	3.2.1
date	2006-04-17T17:28:27
revision	2

sched_exp_time	9685.000000
ontime	9740.246855557
ontime0	9740.246855557
ontime1	9740.246855557
ontime2	9740.246855557
ontime3	9740.246855557
ontime6	9733.9648752511
l1events	358524

2.1.4 Events

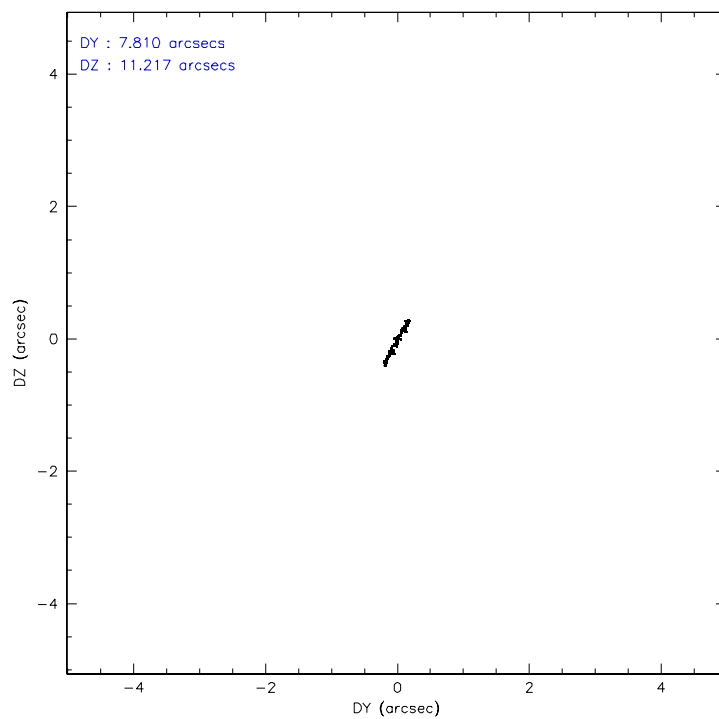
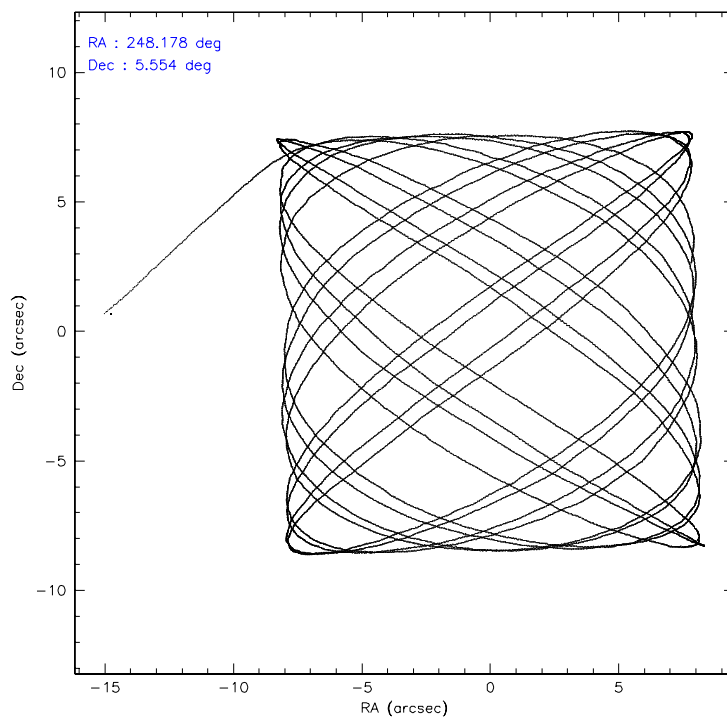
	ccd 0	ccd 1	ccd 2	ccd 3	ccd 6
level 1 events	59543	62709	71954	99179	65139
rejected events	51695	52985	62403	59029	57786
rejected %	86%	84%	86%	59%	88%

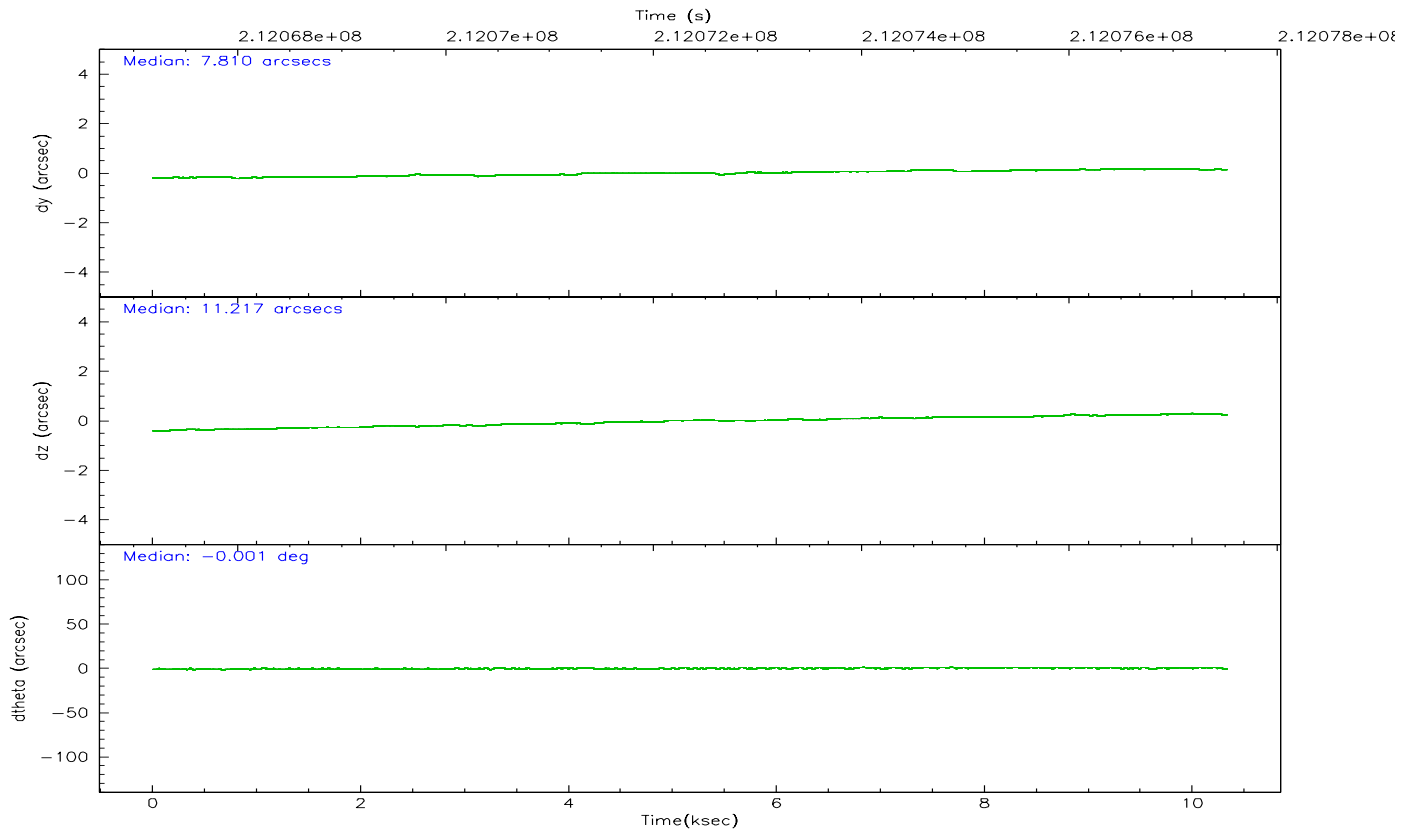
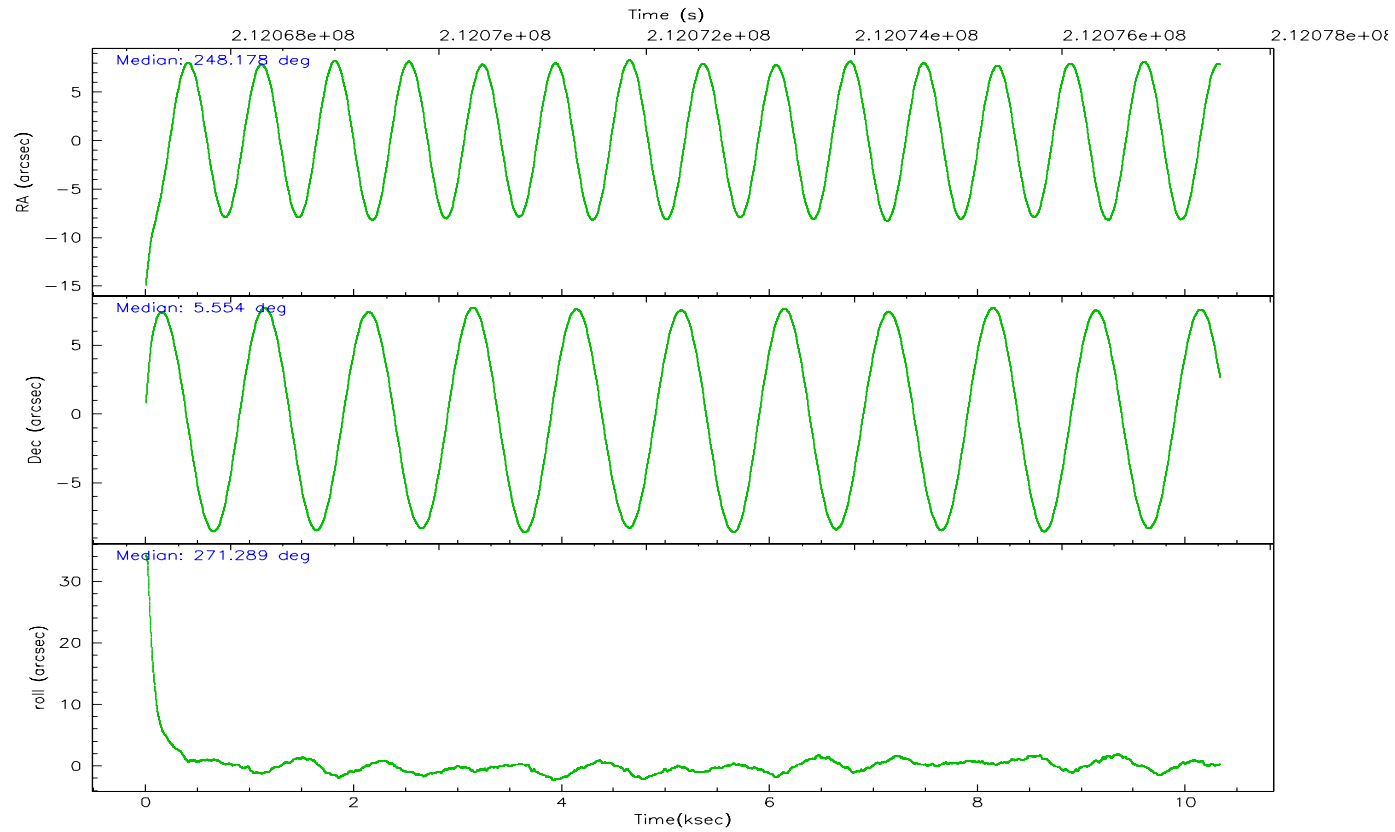
	ccd 0	ccd 1	ccd 2	ccd 3	ccd 6
grade 0 events	3509	4811	4822	30186	3028
	5%	7%	6%	30%	4%
grade 1 events	37	28	38	225	27
	0%	0%	0%	0%	0%
grade 2 events	1790	1798	1998	4579	1557
	3%	2%	2%	4%	2%
grade 3 events	744	831	741	1664	690
	1%	1%	1%	1%	1%
grade 4 events	657	782	752	1699	694
	1%	1%	1%	1%	1%
grade 5 events	1983	2238	1957	2436	2276
	3%	3%	2%	2%	3%
grade 6 events	1148	1505	1238	2032	1384
	1%	2%	1%	2%	2%
grade 7 events	49675	50716	60408	56358	55483
	83%	80%	83%	56%	85%

2.2 Compared Parameters

Parameter	Planned	Actual	Parameter	Planned	Actual
Instrument	ACIS	ACIS	Obspar format version number	6	6
Detector	ACIS-01236	ACIS-01236	Obspar file type	PREDICTED	ACTUAL
Grating	NONE	NONE	Obspar update status	NONE	UPDATED
Data mode	VFAINT	VFAINT	On-chip summing requested	N	N
Observation mode	POINTING	POINTING	Subarray requested	NONE	NONE
Pointing RA	248.164137	248.1785068306459	Alternating exposures requested	N	N
Pointing Dec	5.577641	5.554362171264216	Primary exposure time	0.000000	3.1
Pointing Roll	271.086756	271.2940749812295			
SIM focus pos (mm)	-0.782348	-0.7809083437167272			
SIM defocus (mm)	0	0.001439871863259334			
SIM translation stage pos (mm)	-233.592463	-233.5874344608287			
SIM translation stage offset (mm)	0	-0.005018542100998502			
Observation start time	212067836.184000	212066672.82713			
Observation start date	2004-09-20T11:42:52	2004-09-20T11:24:32			
Observation end time	212077521.184000	212078498.76516			
Observation end date	2004-09-20T14:24:17	2004-09-20T14:41:38			
Read mode	TIMED	TIMED			

2.3 Aspect



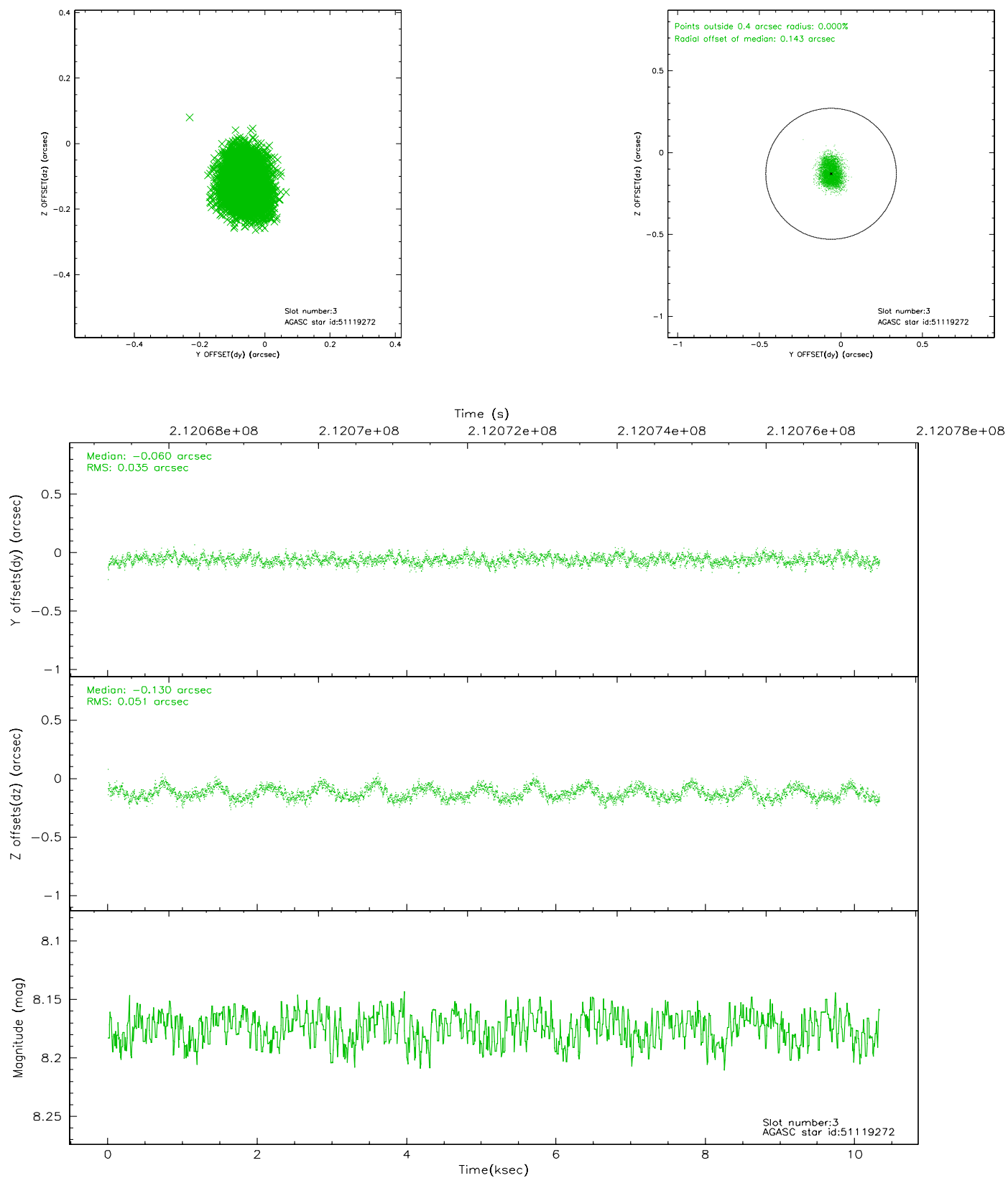


Slot Statistics

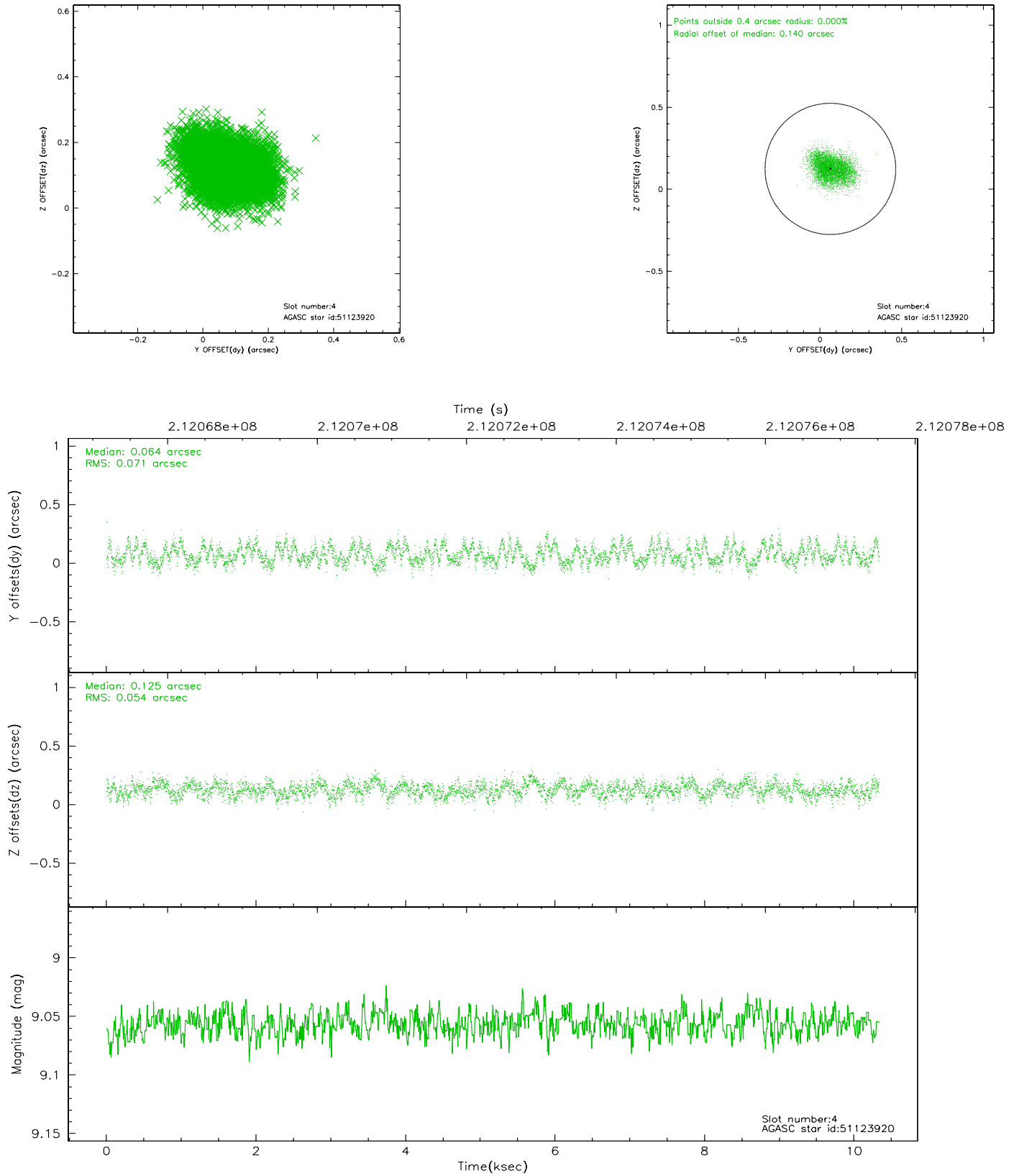
slot	status	id	mag	n_pts	med_dy	med_dz	dr1	dr2	ra	dec	mean_y	mean_z
0	FID	ACIS-I-1	7.24	2521	0.012	0.017	0.011	0.019	0.000000	0.000000	931.85	-834.69
1	FID	ACIS-I-5	7.23	2521	-0.138	0.040	0.010	0.017	0.000000	0.000000	-1816.09	1062.63
2	FID	ACIS-I-6	7.25	2521	0.035	0.013	0.007	0.012	0.000000	0.000000	396.91	1707.63
3	GUIDE	51119272	8.17	5041	-0.060	-0.130	0.066	0.106	247.573996	5.444578	438.28	-2123.48
4	GUIDE	51123920	9.06	5041	0.064	0.125	0.096	0.152	248.739818	5.153526	1565.01	2034.94
5	GUIDE	51645232	9.42	5041	-0.070	-0.037	0.082	0.132	248.578272	6.115031	-1906.23	1519.33
6	GUIDE	51653824	9.04	5037	-0.022	-0.019	0.085	0.137	248.663501	6.113421	-1895.57	1824.19
7	GUIDE	51124904	9.12	5034	0.089	0.058	0.091	0.149	248.832815	5.226203	1309.24	2372.64

2.4 Star Slots

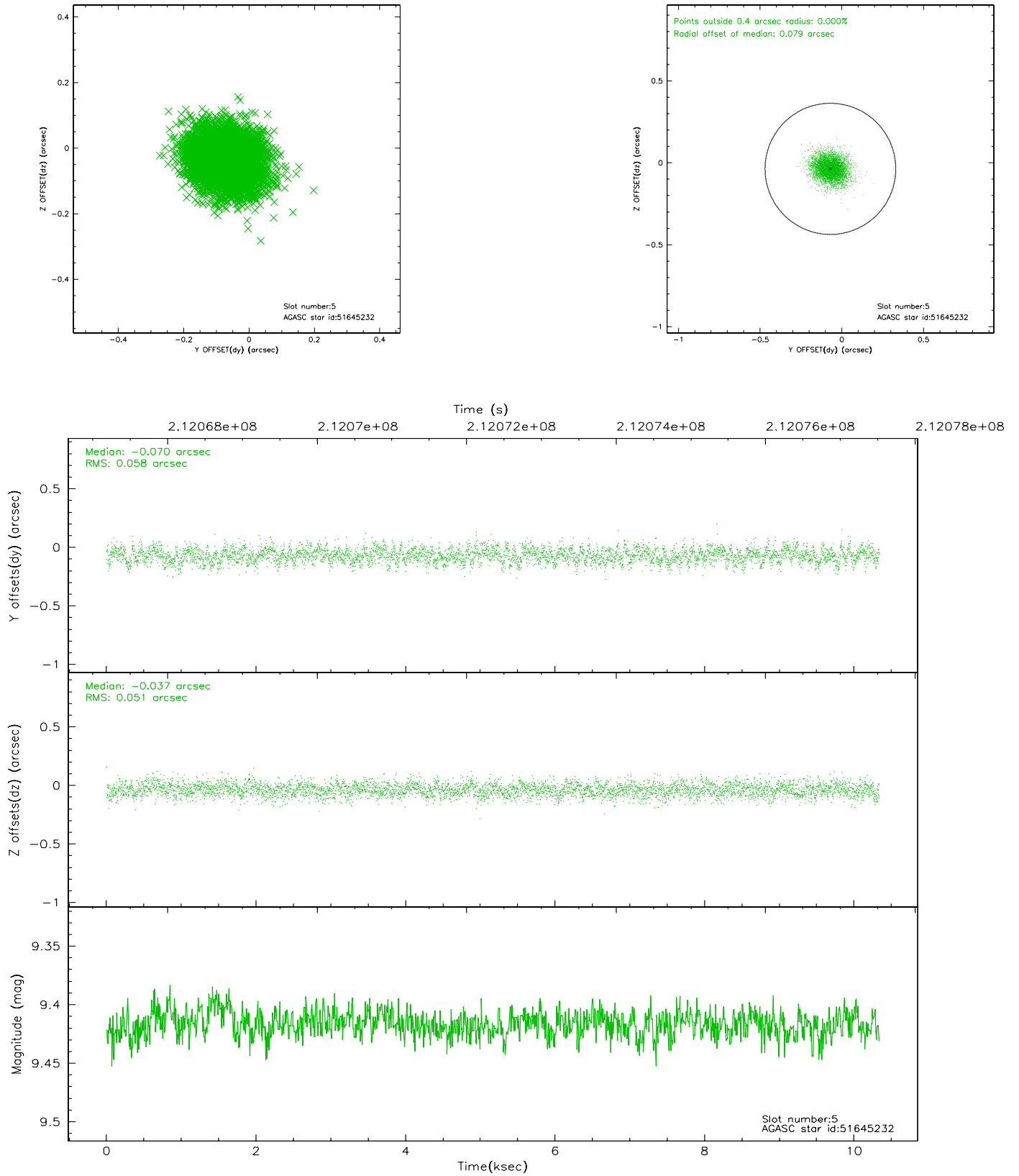
2.4.1 Slot 3



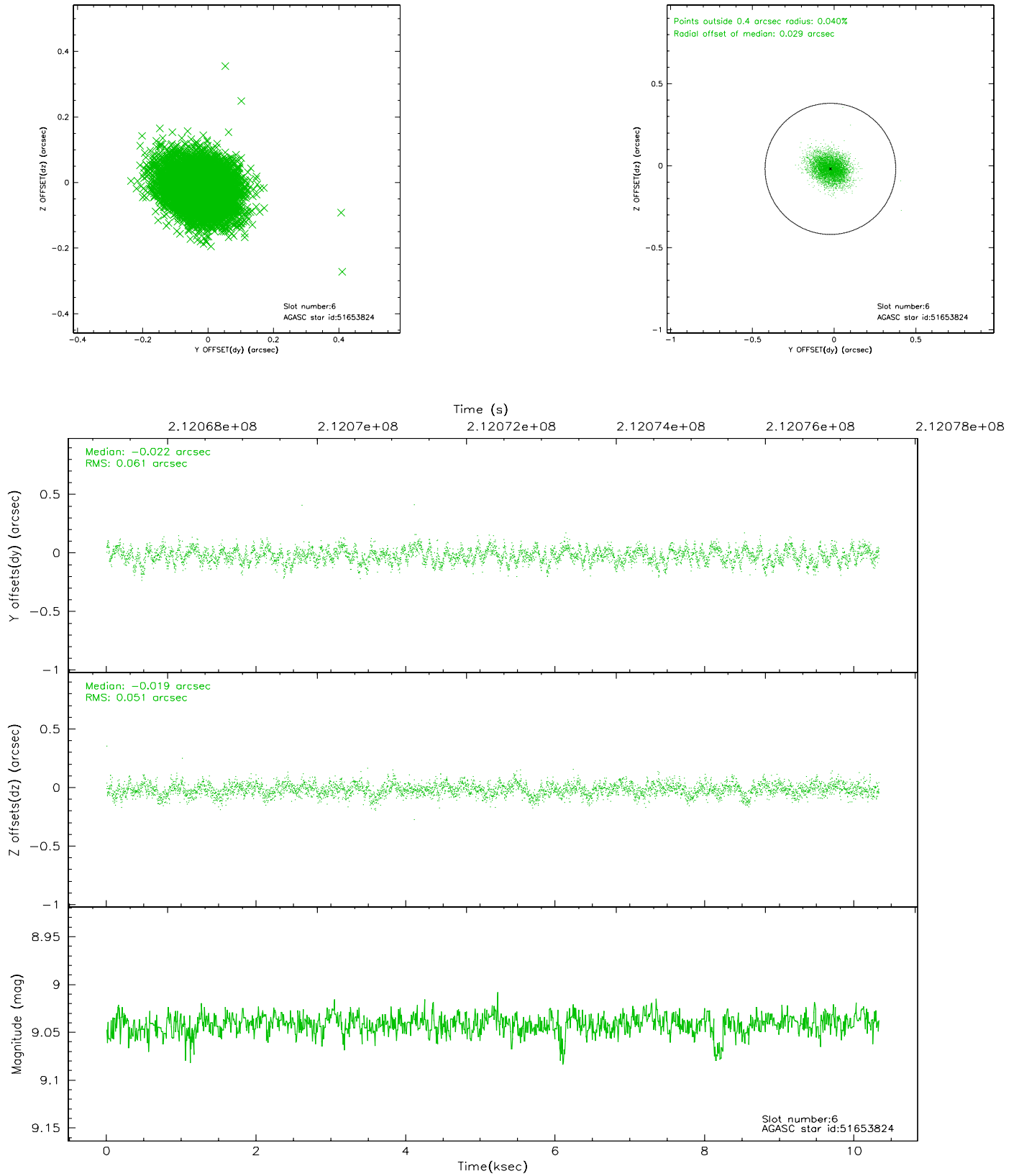
2.4.2 Slot 4



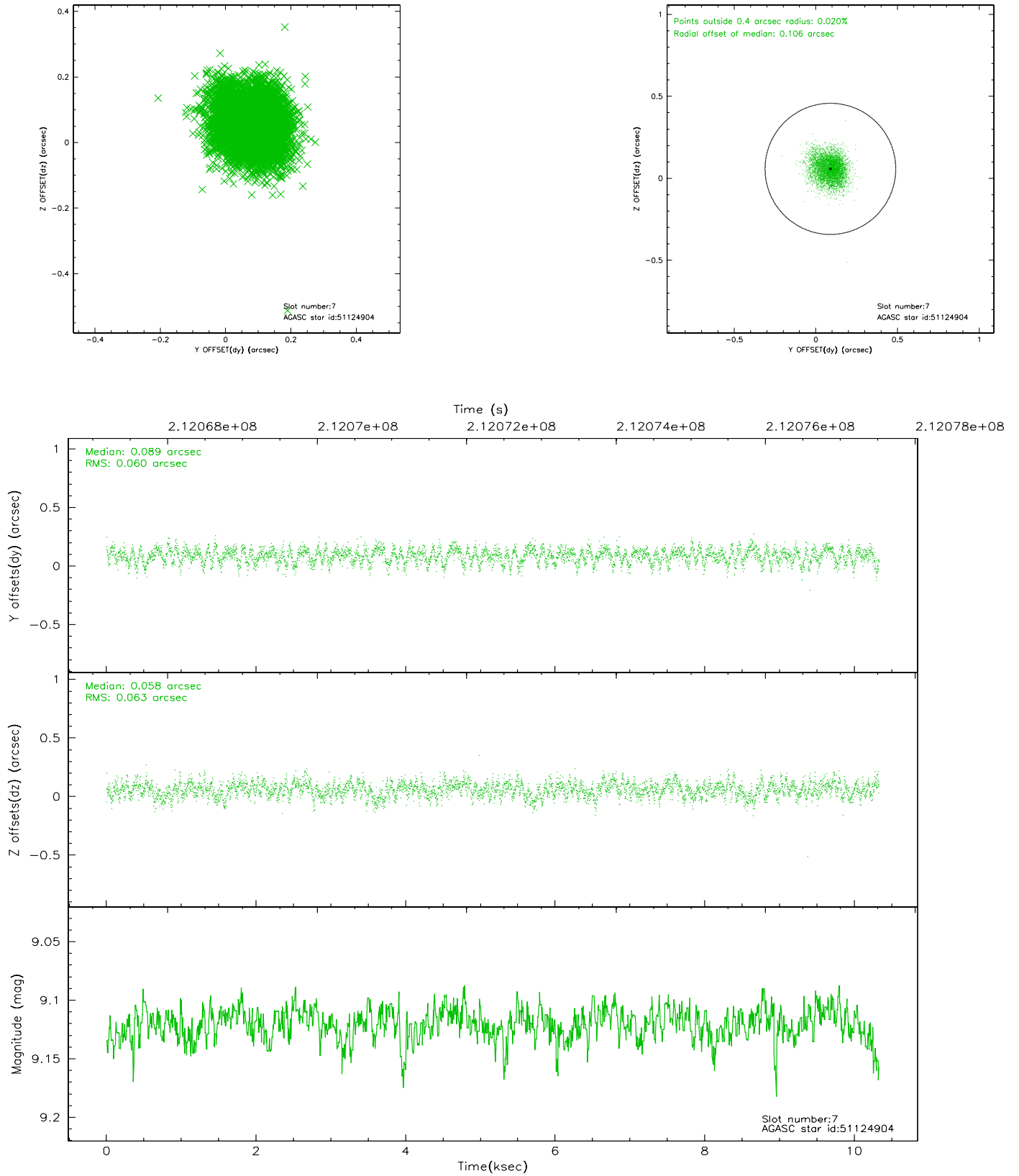
2.4.3 Slot 5



2.4.4 Slot 6

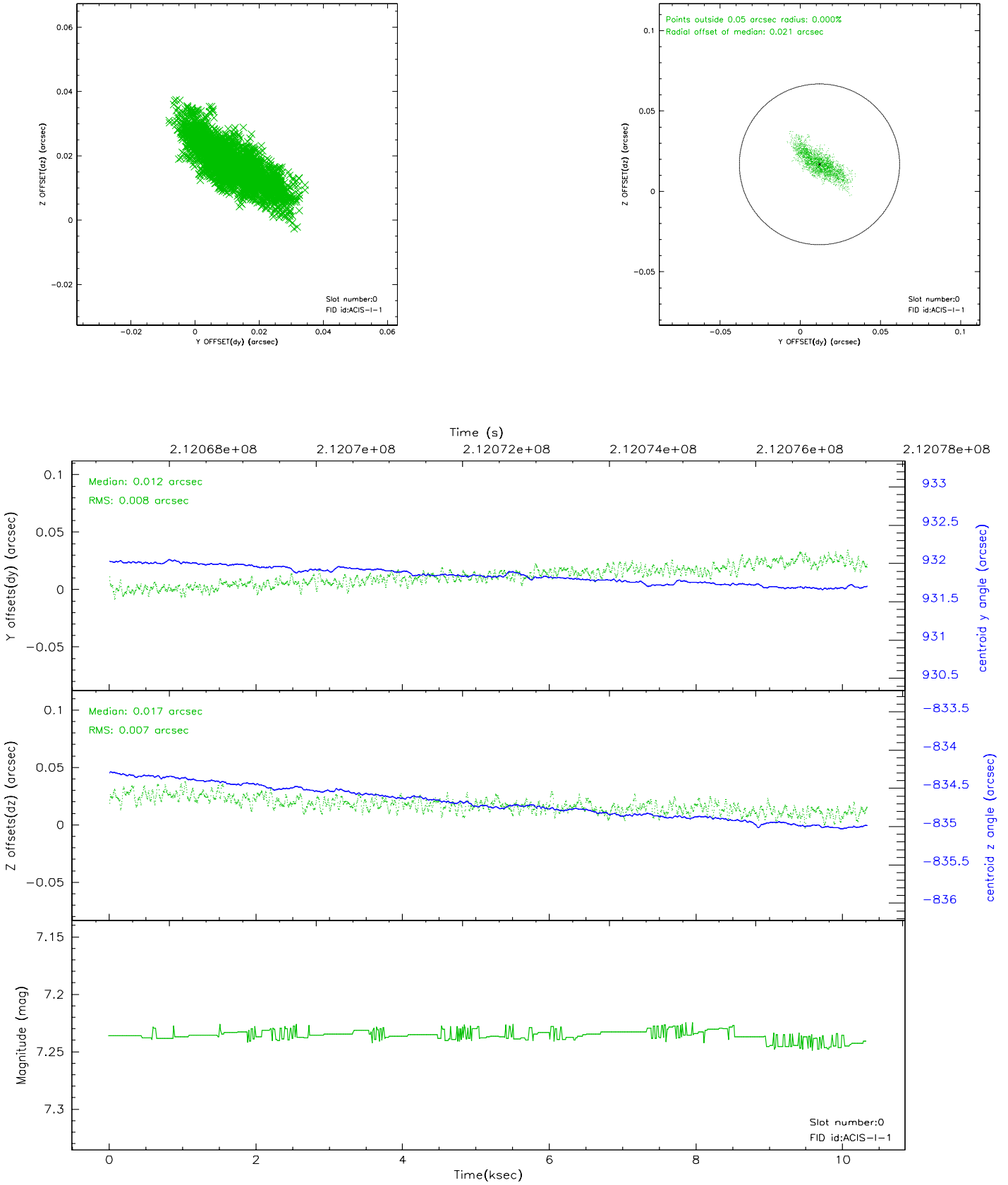


2.4.5 Slot 7

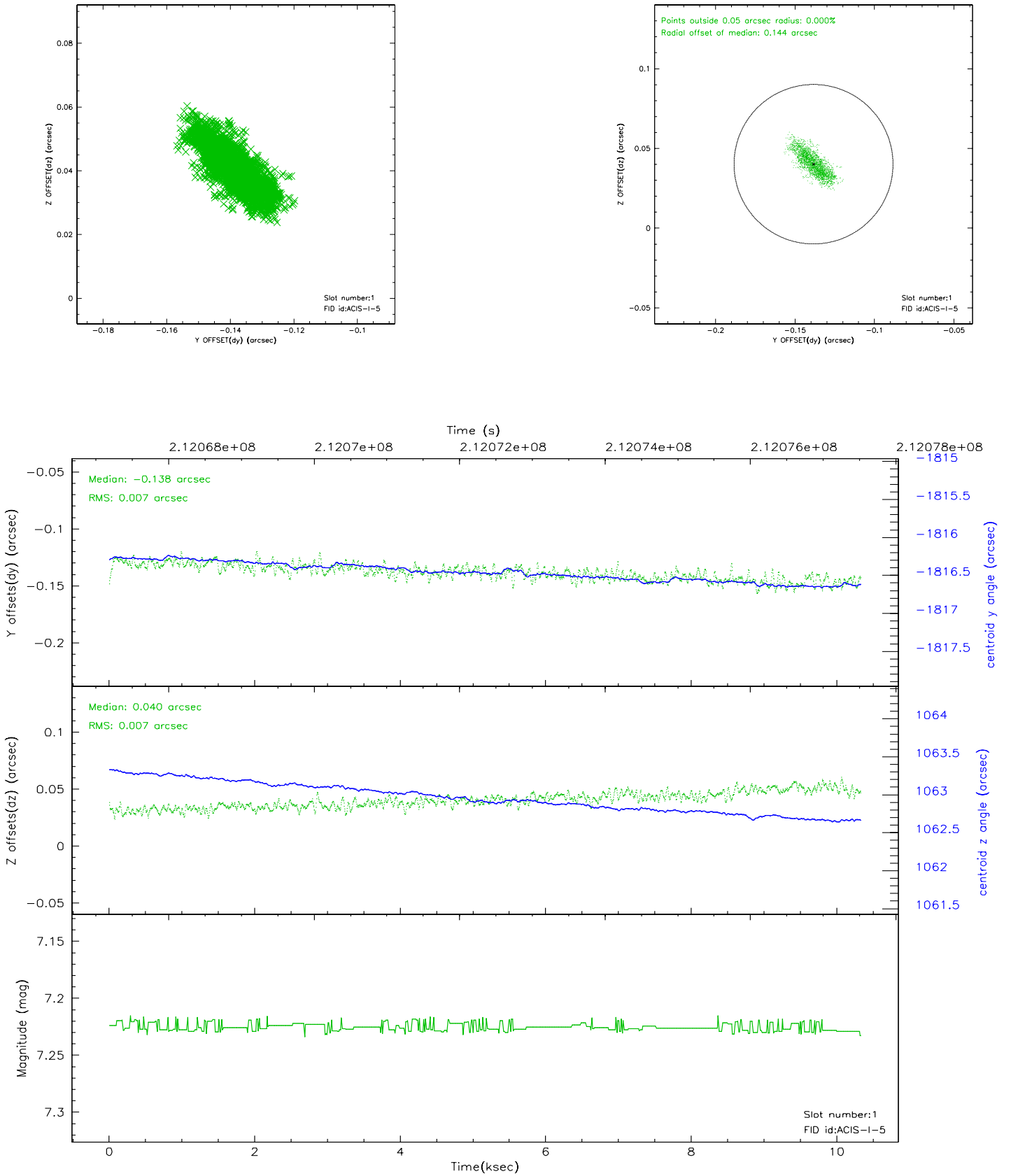


2.5 FID Slots

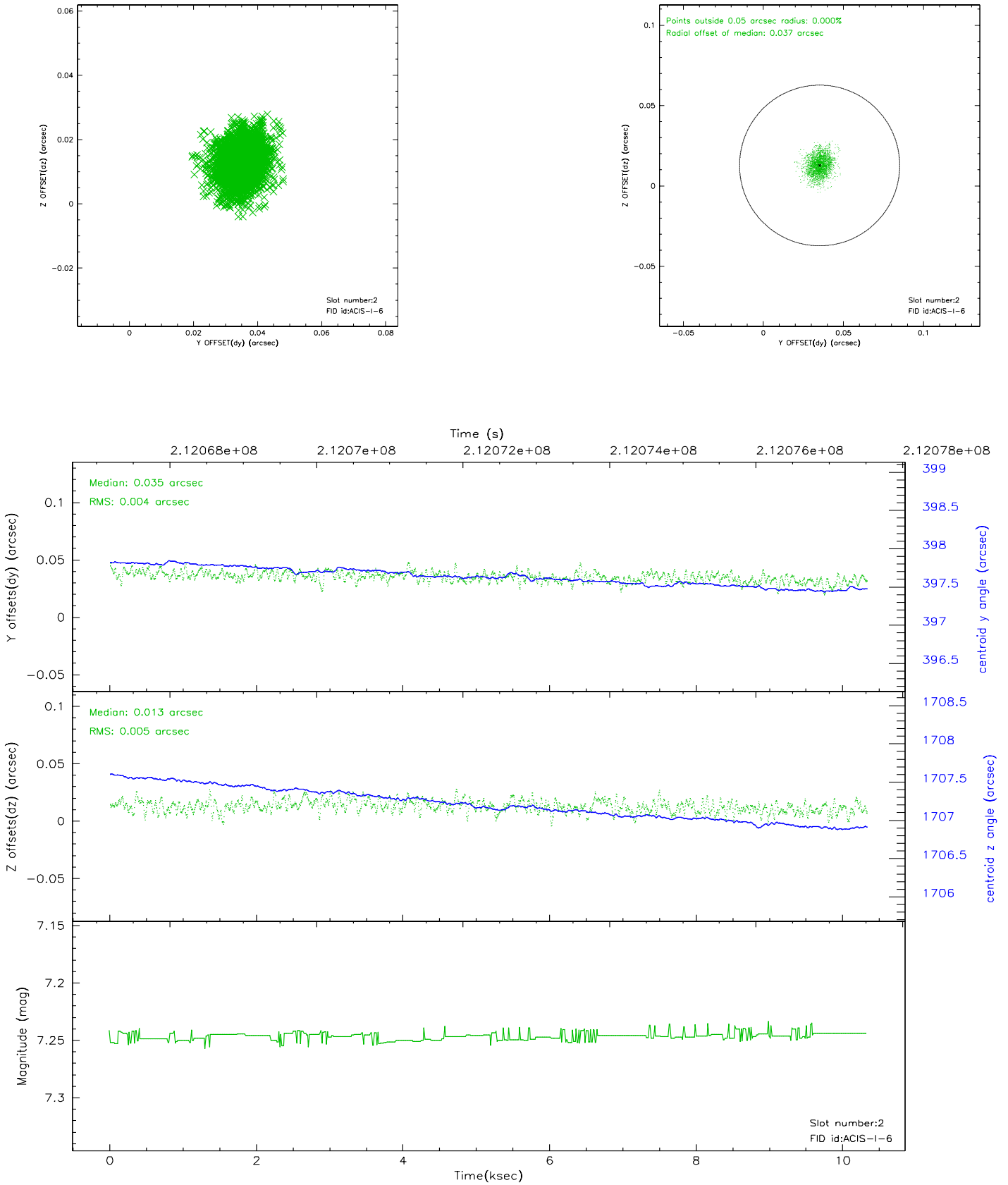
2.5.1 Slot 0



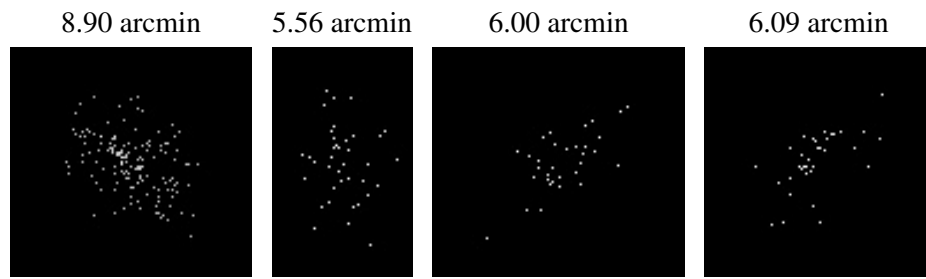
2.5.2 Slot 1



2.5.3 Slot 2



3 Point Sources



A Summary

A.1 Status

V&V Scientist	Beth Sundheim
V&V Date (YYYY-MM-DD)	2006.04.17
V&V Edition	1
V&V Disposition and Status	OK
V&V Charge Time	9.737

A.2 Comments