

# V&V Reference Report

## L2 ASCDS Version : 7.6.8

Observation 5250 - L2 Version 001  
Chandra X-Ray Center

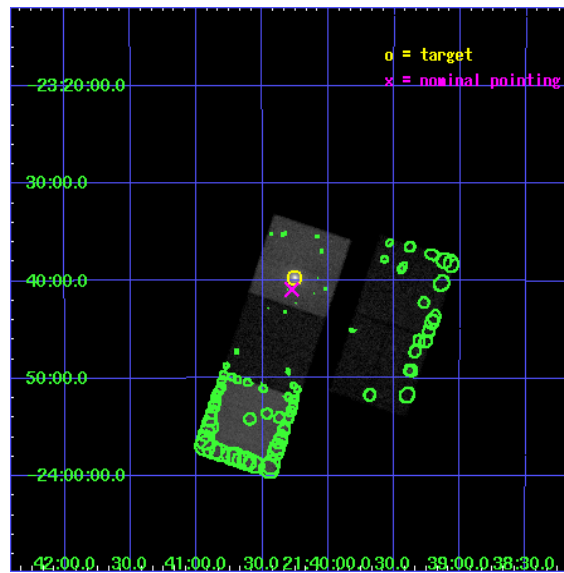
L2 Processing Date : Jun 28 2006

## Contents

<b>1</b>	<b>Front</b>	<b>2</b>
<b>2</b>	<b>OBI</b>	<b>3</b>
2.1	OBI . . . . .	3
2.1.1	Images . . . . .	3
2.1.2	Bias . . . . .	3
2.1.3	Parameters . . . . .	4
2.1.4	Events . . . . .	4
2.2	Compared Parameters . . . . .	5
2.3	Aspect . . . . .	6
2.4	Star Slots . . . . .	9
2.4.1	Slot 3 . . . . .	9
2.4.2	Slot 4 . . . . .	10
2.4.3	Slot 5 . . . . .	11
2.4.4	Slot 6 . . . . .	12
2.4.5	Slot 7 . . . . .	13
2.5	FID Slots . . . . .	14
2.5.1	Slot 0 . . . . .	14
2.5.2	Slot 1 . . . . .	15
2.5.3	Slot 2 . . . . .	16
<b>3</b>	<b>Point Sources</b>	<b>17</b>
<b>A</b>	<b>Summary</b>	<b>18</b>
A.1	Status . . . . .	18
A.2	Comments . . . . .	18

# 1 Front

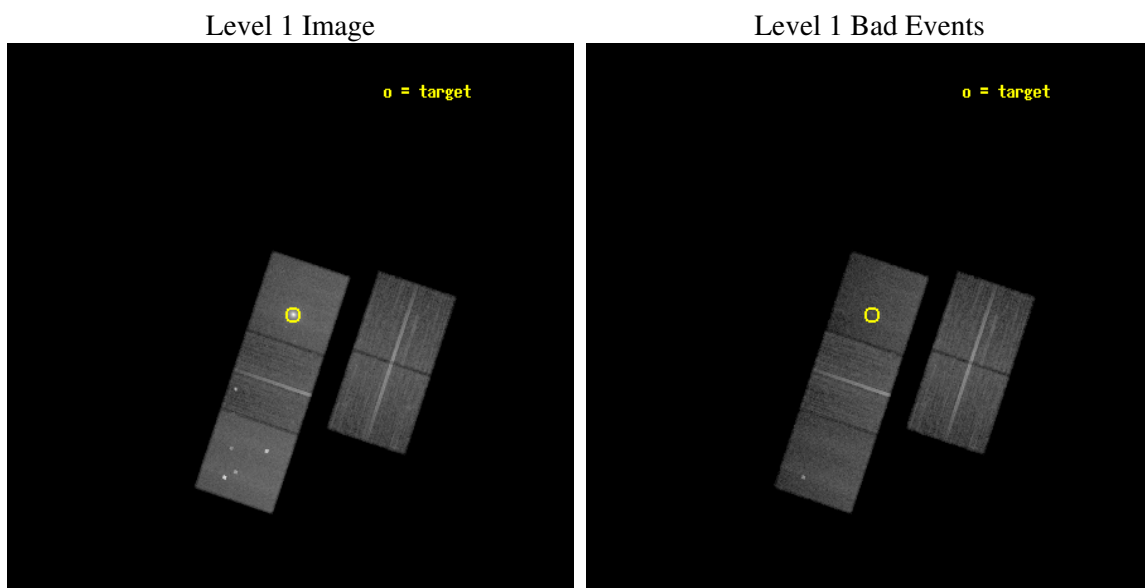
seq_num	800419
obs_id	5250
title	A detailed Chandra study of the luminous lensing cluster MS2137.3-2353
observer	Dr Steven Allen
object	MS2137.3-2353
dtcycle	0
cycle	P
ra_targ	325.06375
dec_targ	-23.661389
ra_nom	325.06909515791
dec_nom	-23.681547985172
roll_nom	288.42631954482
revision	2
ontime	41084.299921006
livetime	40547.503296716
ontime2	41078.018000543
ontime3	41081.158950746
ontime5	41084.299921006
ontime6	41081.158950746
ontime7	41084.299921006
l2events	288634



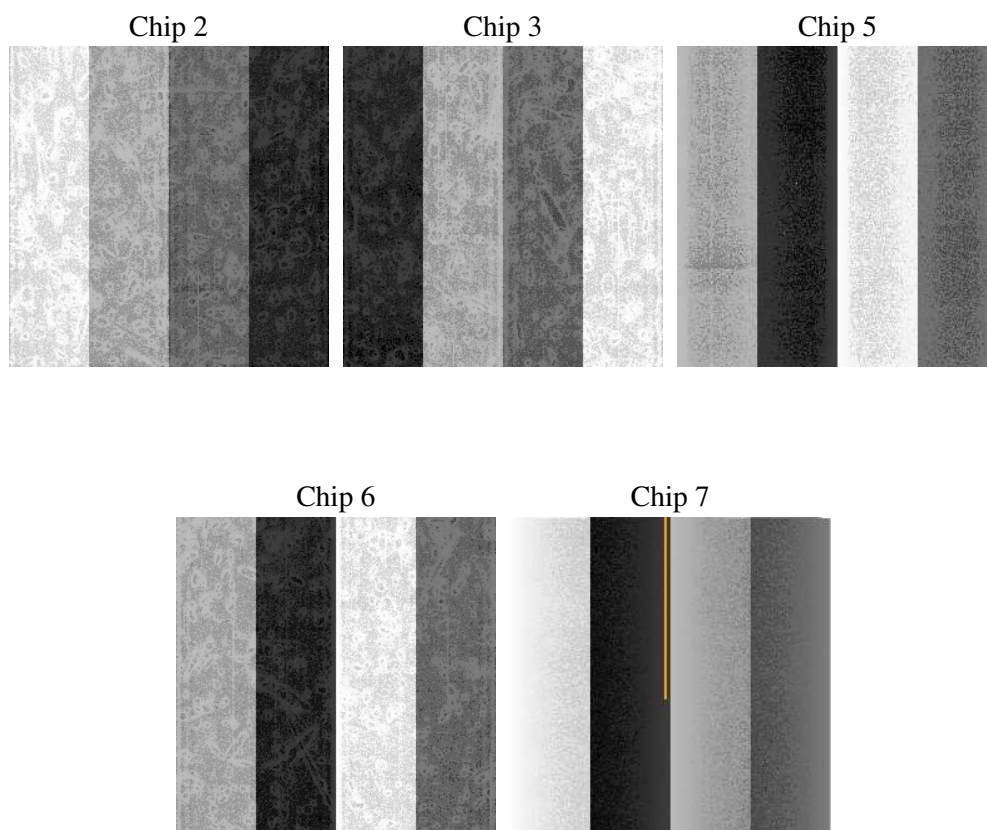
## 2 OBI

### 2.1 OBI

#### 2.1.1 Images



#### 2.1.2 Bias



### 2.1.3 Parameters

obi_num	0
ascdsver	7.6.8
caldbver	3.2.2
date	2006-06-28T04:53:59
revision	2

sched_exp_time	40954.045000
ontime	41090.591411114
ontime2	41084.309490651
ontime3	41087.450440854
ontime5	41090.591411114
ontime6	41087.450440854
ontime7	41090.591411114
l1events	1049130

### 2.1.4 Events

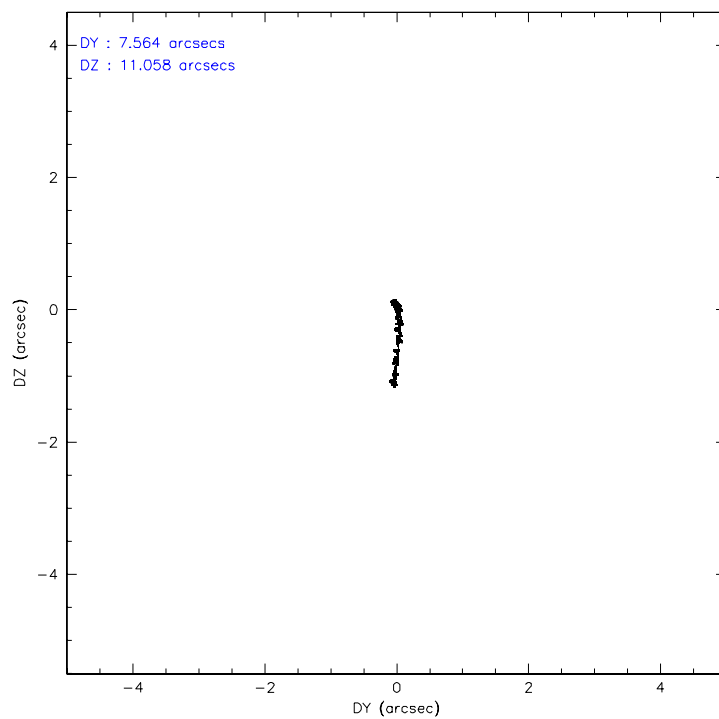
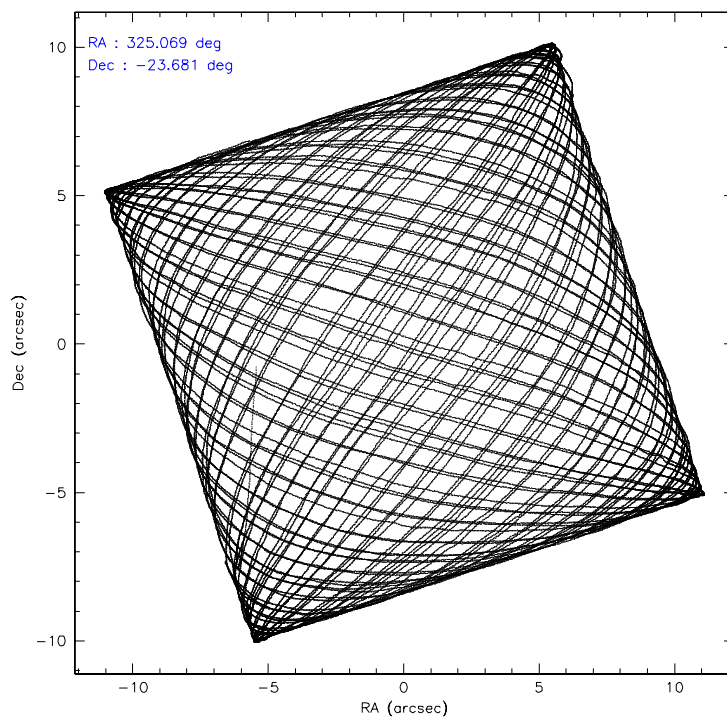
	ccd 2	ccd 3	ccd 5	ccd 6	ccd 7
level 1 events	180714	173982	266753	183971	243710
rejected events	160110	155967	131401	160611	117381
rejected %	88%	89%	49%	87%	48%

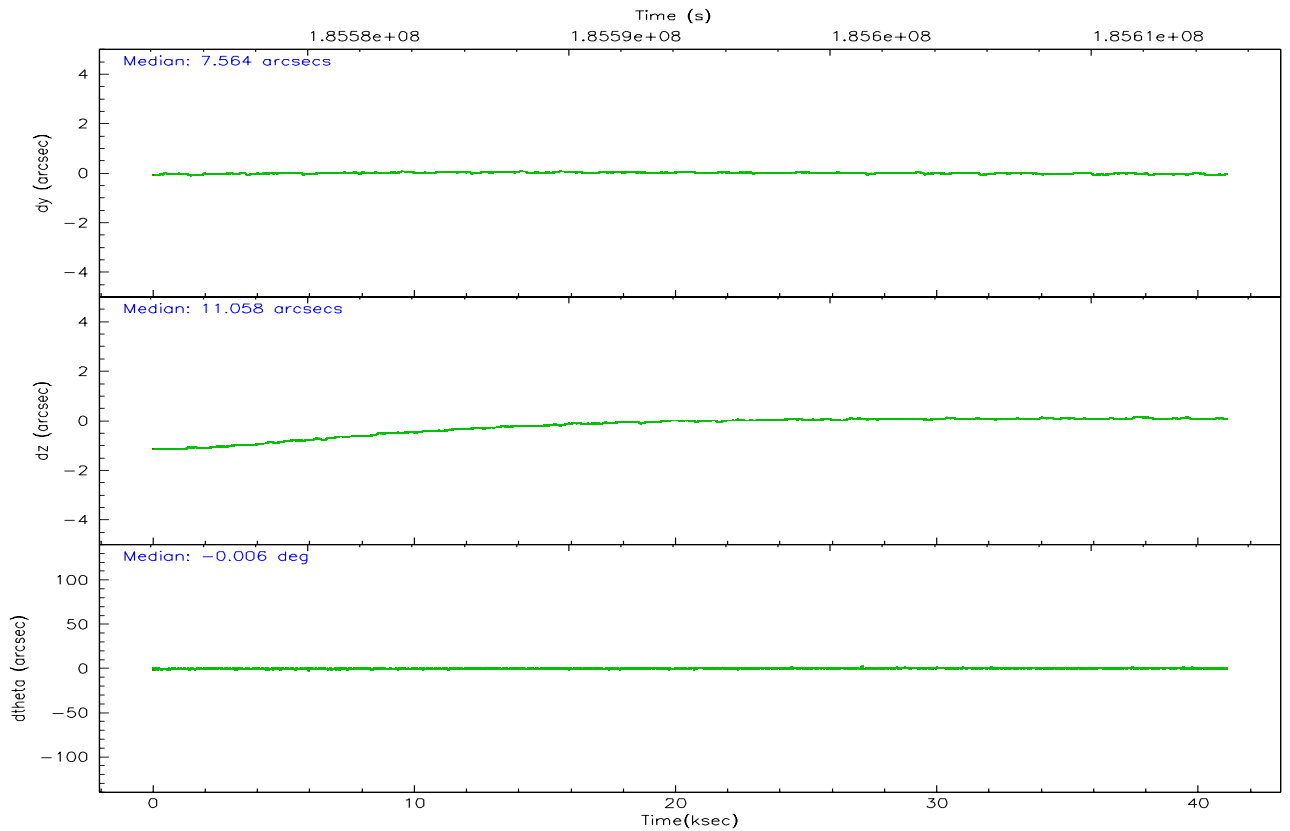
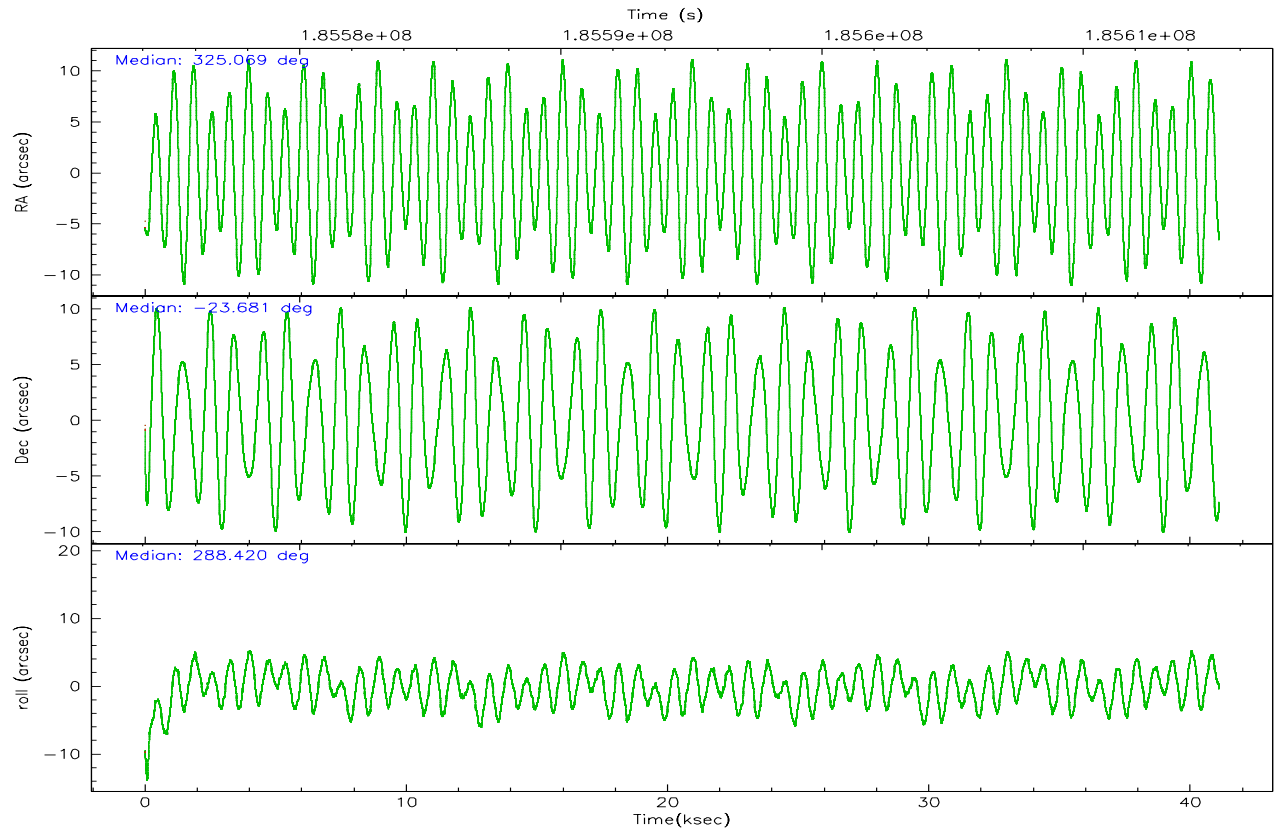
	ccd 2	ccd 3	ccd 5	ccd 6	ccd 7
grade 0 events	8552	6933	18019	10189	17048
	4%	3%	6%	5%	6%
grade 1 events	94	94	674	94	121
	0%	0%	0%	0%	0%
grade 2 events	4576	3656	43321	4673	32136
	2%	2%	16%	2%	13%
grade 3 events	2031	2081	3660	2208	9445
	1%	1%	1%	1%	3%
grade 4 events	2152	1979	3506	2153	9232
	1%	1%	1%	1%	3%
grade 5 events	5951	6845	13101	7231	15389
	3%	3%	4%	3%	6%
grade 6 events	3297	3369	66872	4142	58492
	1%	1%	25%	2%	24%
grade 7 events	154061	149025	117600	153281	101847
	85%	85%	44%	83%	41%

## 2.2 Compared Parameters

Parameter	Planned	Actual	Parameter	Planned	Actual
Instrument	ACIS	ACIS	Obspar format version number	6	6
Detector	ACIS-23567	ACIS-23567	Obspar file type	PREDICTED	ACTUAL
Grating	NONE	NONE	Obspar update status	NONE	UPDATED
Data mode	VFAINT	VFAINT	On-chip summing requested	N	N
Observation mode	POINTING	POINTING	Subarray requested	NONE	NONE
Pointing RA	325.046594	325.0690951579127	Alternating exposures requested	N	N
Pointing Dec	-23.663766	-23.68154798517248	Primary exposure time	0.000000	3.1
Pointing Roll	288.260659	288.4263195448218			
SIM focus pos (mm)	-0.684267	-0.6828225247311905			
SIM defocus (mm)	0	0.001444936568705701			
SIM translation stage pos (mm)	-190.132523	-190.1400660498719			
SIM translation stage offset (mm)	0	0.00754346686406393			
Observation start time	185574240.184000	185573267.06109			
Observation start date	2003-11-18T20:22:56	2003-11-18T20:07:47			
Observation end time	185615194.184000	185615507.82542			
Observation end date	2003-11-19T07:45:30	2003-11-19T07:51:47			
Read mode	TIMED	TIMED			

## 2.3 Aspect





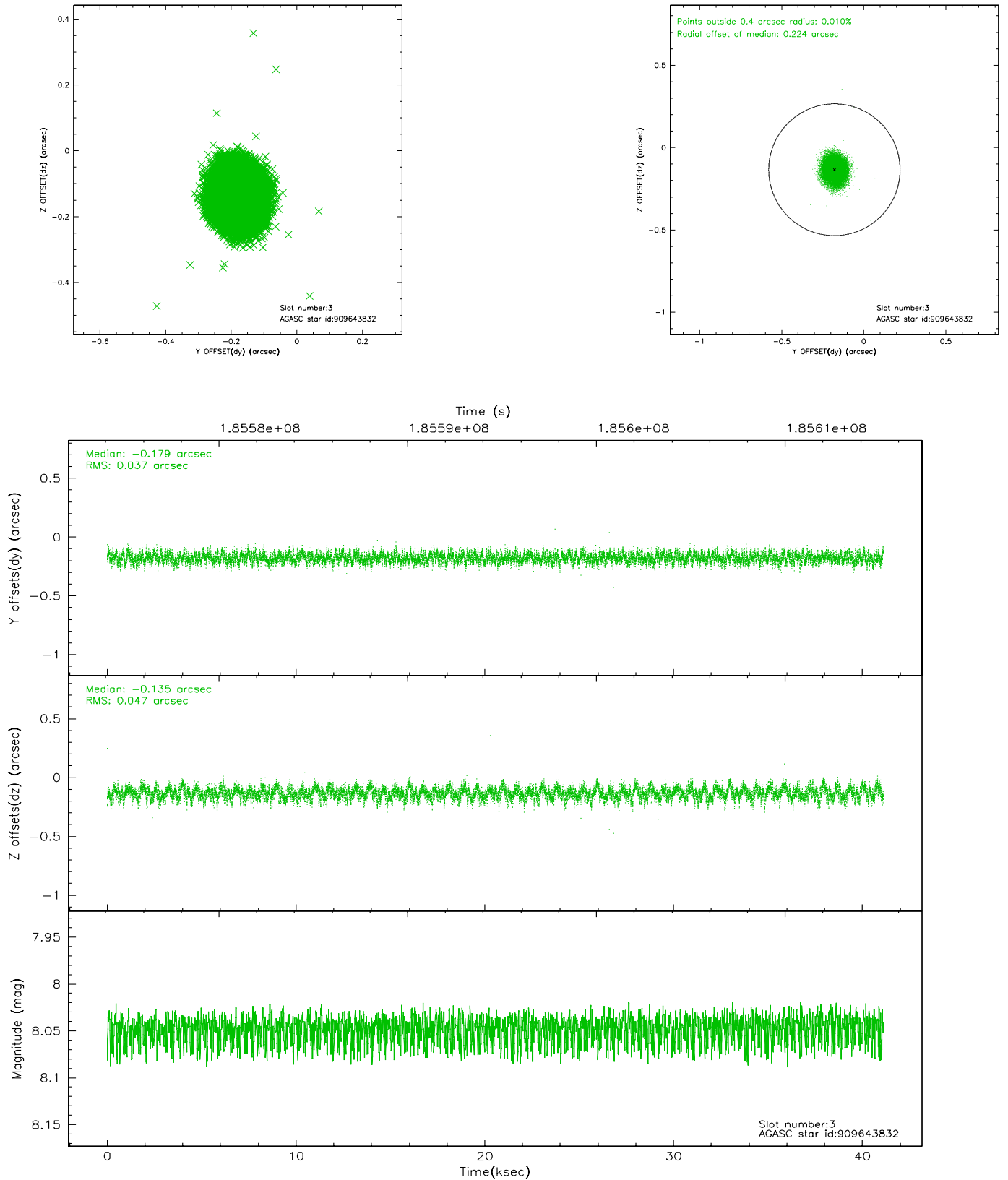
### Slot Statistics

slot	status	id	mag	n_pts	med_dy	med_dz	dr1	dr2	ra	dec	mean_y	mean_z
0	FID	ACIS-S-1	7.18	10027	-0.009	-0.051	0.012	0.055	0.000000	0.000000	935.70	-1727.78
1	FID	ACIS-S-4	7.20	10027	0.020	0.013	0.008	0.014	0.000000	0.000000	2153.13	176.43
2	FID	ACIS-S-6	7.34	10028	-0.035	0.048	0.011	0.042	0.000000	0.000000	401.61	813.82
3	GUIDE	909643832	8.05	20056	-0.179	-0.135	0.064	0.101	324.425965	-23.695091	-529.34	-1979.56
4	GUIDE	909645848	9.42	20046	0.203	0.124	0.084	0.140	325.032563	-24.266321	2046.12	-723.07
5	GUIDE	909647192	8.99	20050	-0.180	0.081	0.068	0.110	324.987552	-23.199068	-1649.63	338.68
6	GUIDE	910169400	7.33	20056	0.144	-0.135	0.050	0.084	324.740991	-24.449844	2375.36	-1837.98
7	GUIDE	909647840	10.07	20027	0.015	0.066	0.129	0.204	325.780043	-23.638011	676.12	2324.44

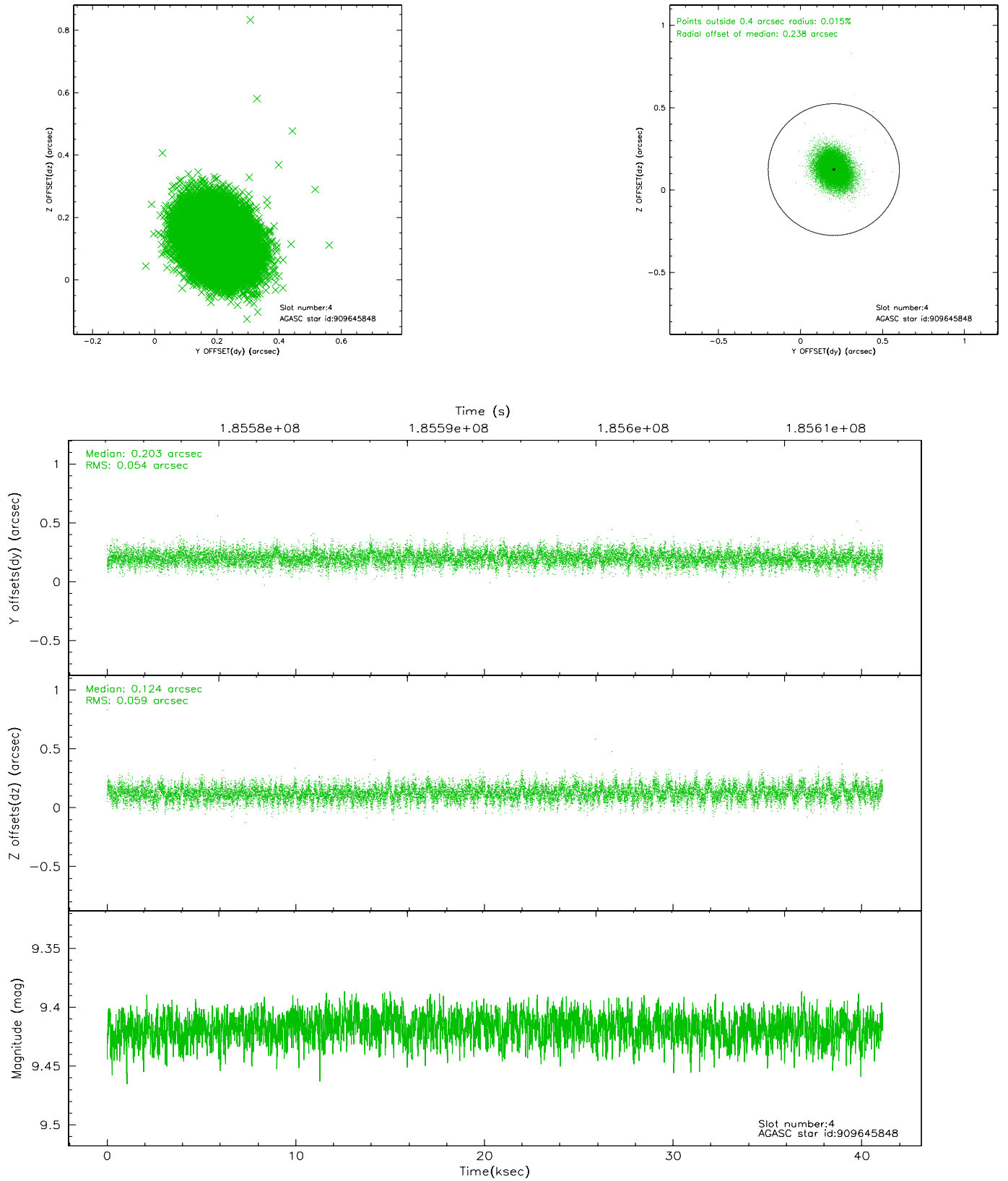


## 2.4 Star Slots

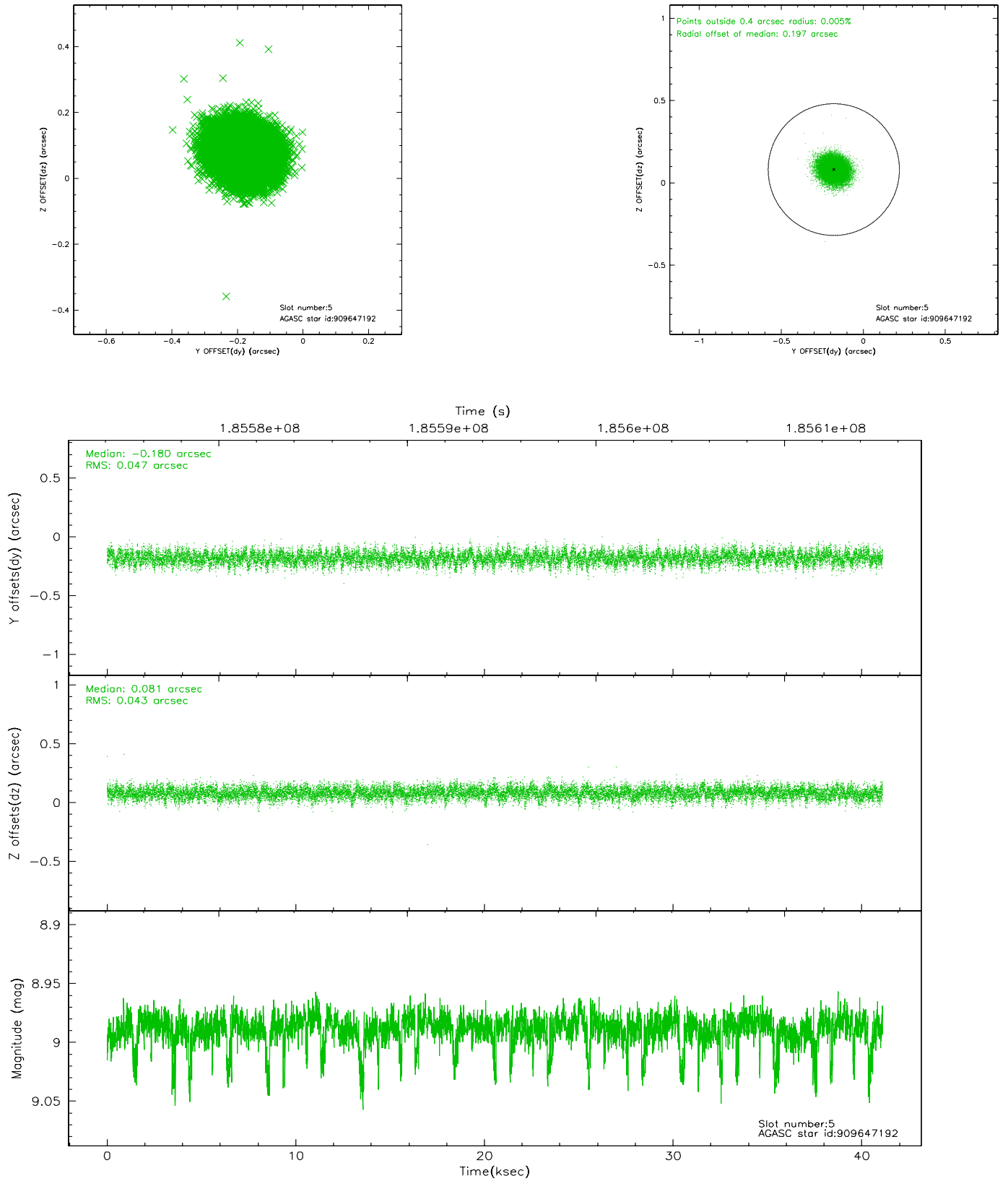
### 2.4.1 Slot 3



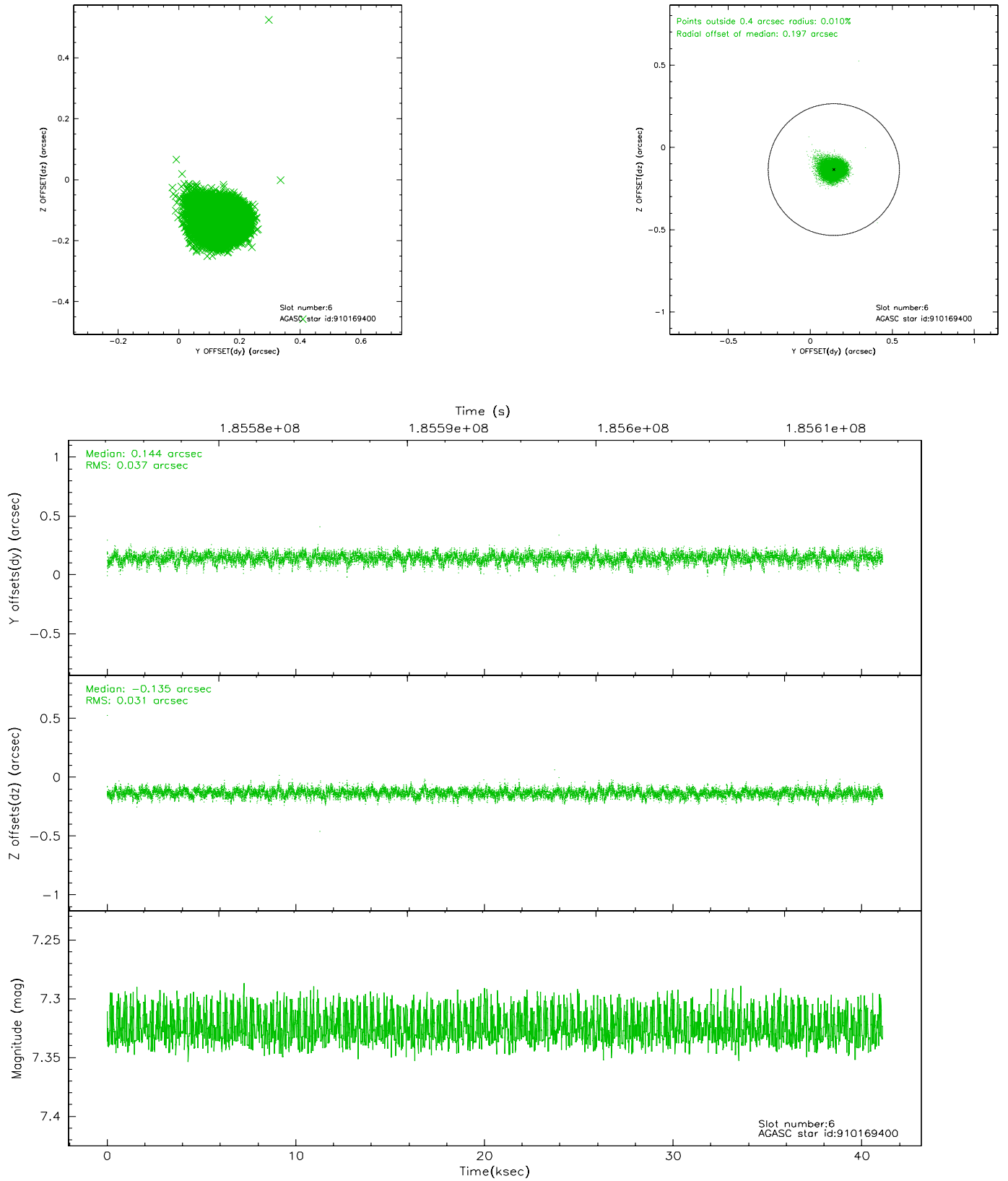
## 2.4.2 Slot 4



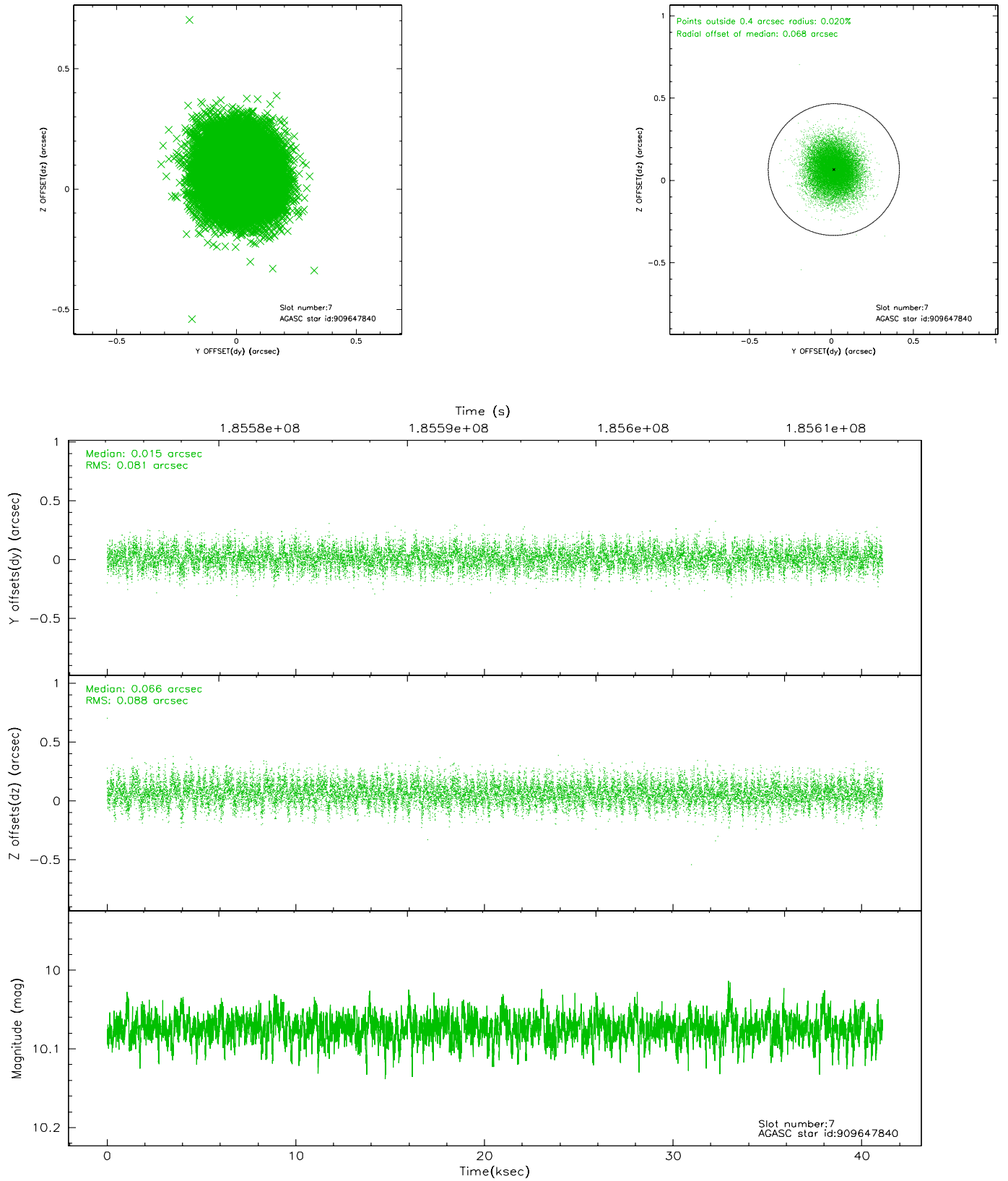
### 2.4.3 Slot 5



## 2.4.4 Slot 6

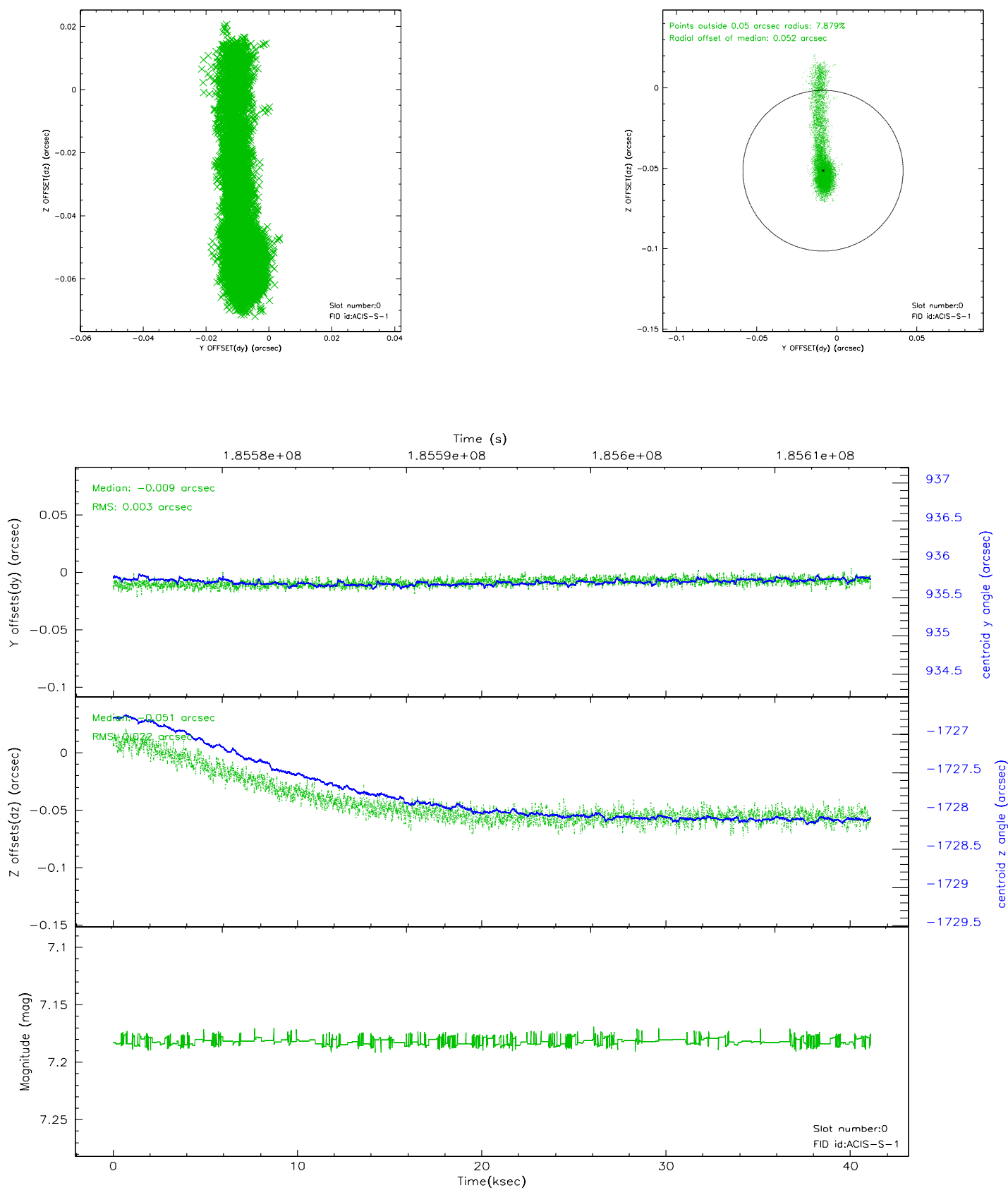


## 2.4.5 Slot 7

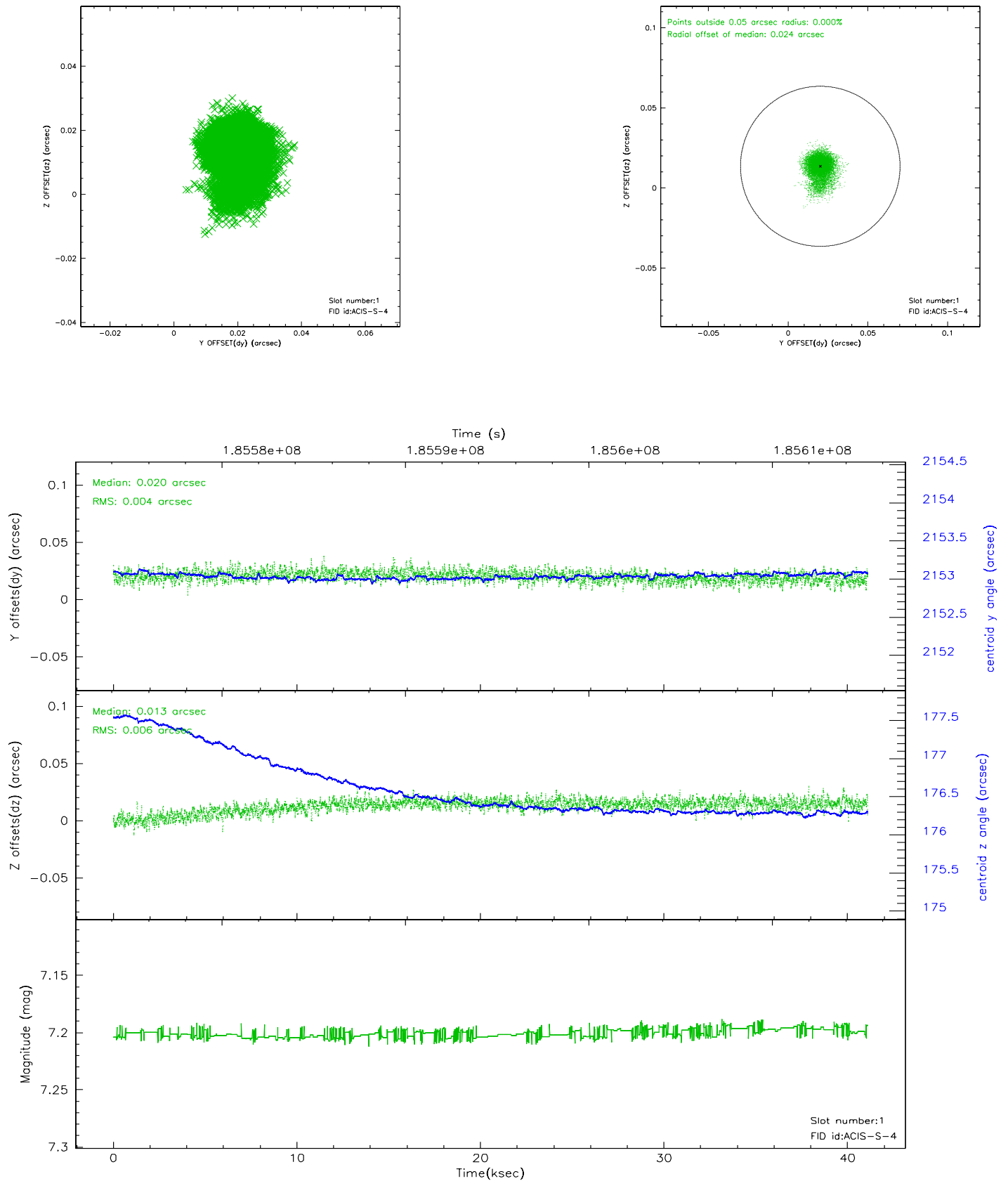


## 2.5 FID Slots

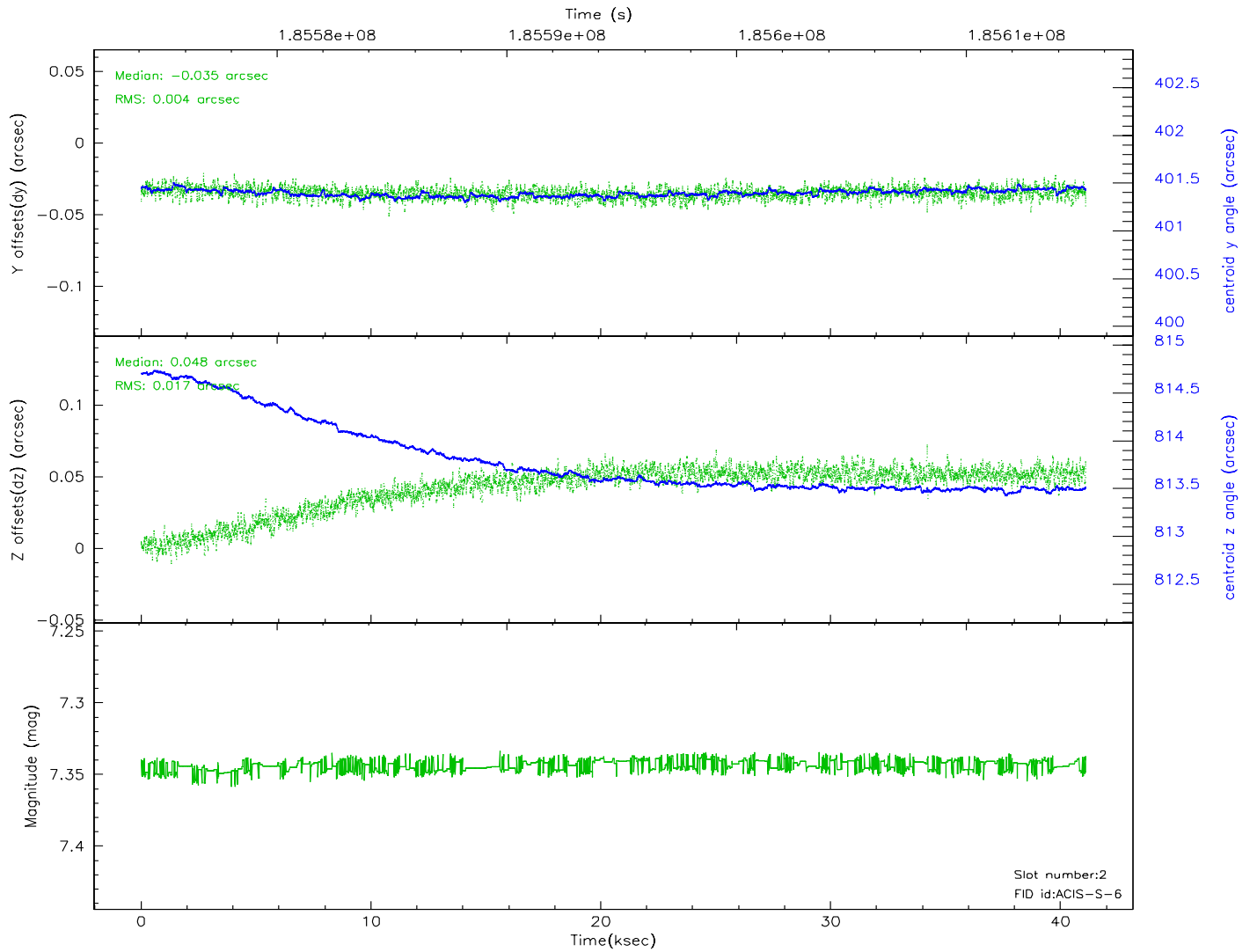
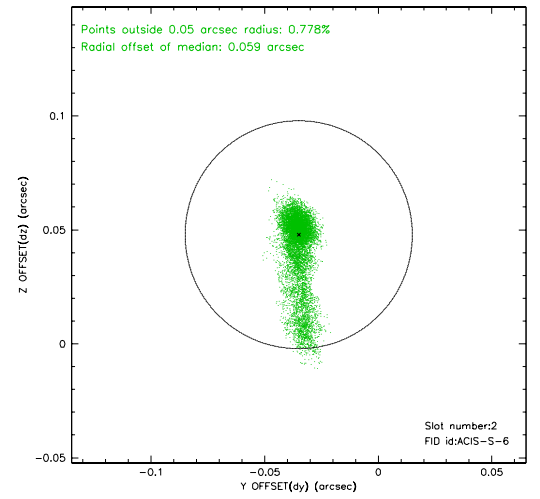
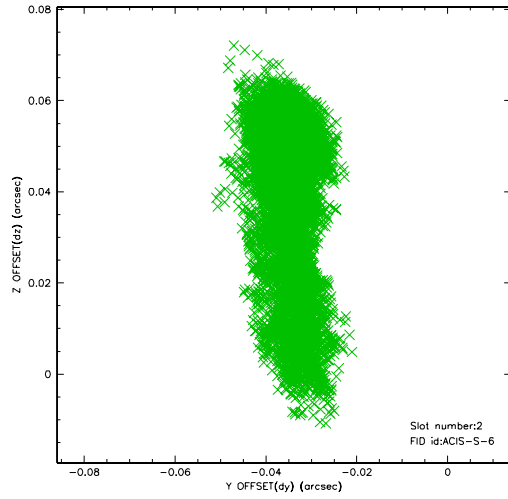
### 2.5.1 Slot 0



## 2.5.2 Slot 1

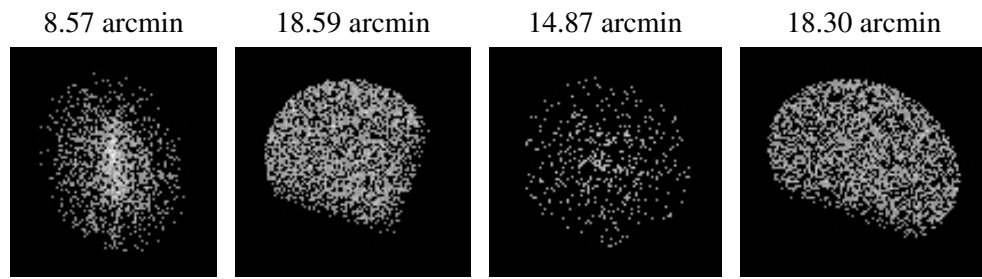


### 2.5.3 Slot 2





### 3 Point Sources



## A Summary

### A.1 Status

V&V Scientist	Beth Sundheim
V&V Date (YYYY-MM-DD)	2006.06.28
V&V Edition	1
V&V Disposition and Status	OK
V&V Charge Time	41.087

### A.2 Comments