

# V&V Reference Report

## L2 ASCDS Version : 7.6.7.2

Observation 5012 - L2 Version 001  
Chandra X-Ray Center

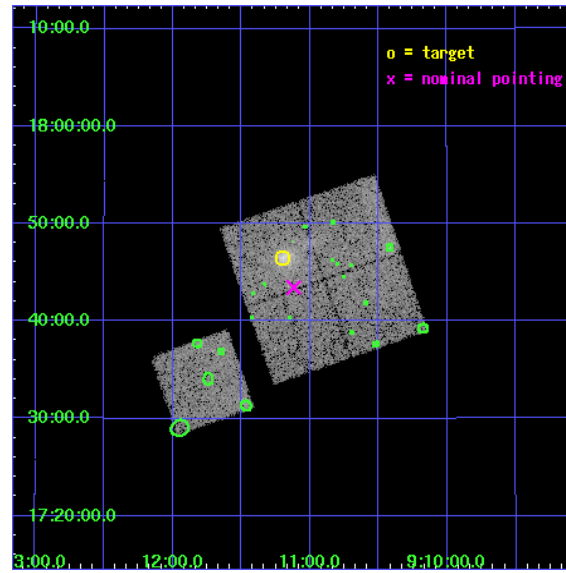
L2 Processing Date : May 31 2006

## Contents

<b>1</b>	<b>Front</b>	<b>2</b>
<b>2</b>	<b>OBI</b>	<b>3</b>
2.1	OBI . . . . .	3
2.1.1	Images . . . . .	3
2.1.2	Bias . . . . .	3
2.1.3	Parameters . . . . .	4
2.1.4	Events . . . . .	4
2.2	Compared Parameters . . . . .	5
2.3	Aspect . . . . .	6
2.4	Star Slots . . . . .	9
2.4.1	Slot 3 . . . . .	9
2.4.2	Slot 4 . . . . .	10
2.4.3	Slot 5 . . . . .	11
2.4.4	Slot 6 . . . . .	12
2.4.5	Slot 7 . . . . .	13
2.5	FID Slots . . . . .	14
2.5.1	Slot 0 . . . . .	14
2.5.2	Slot 1 . . . . .	15
2.5.3	Slot 2 . . . . .	16
<b>3</b>	<b>Point Sources</b>	<b>17</b>
<b>A</b>	<b>Summary</b>	<b>18</b>
A.1	Status . . . . .	18
A.2	Comments . . . . .	18

# 1 Front

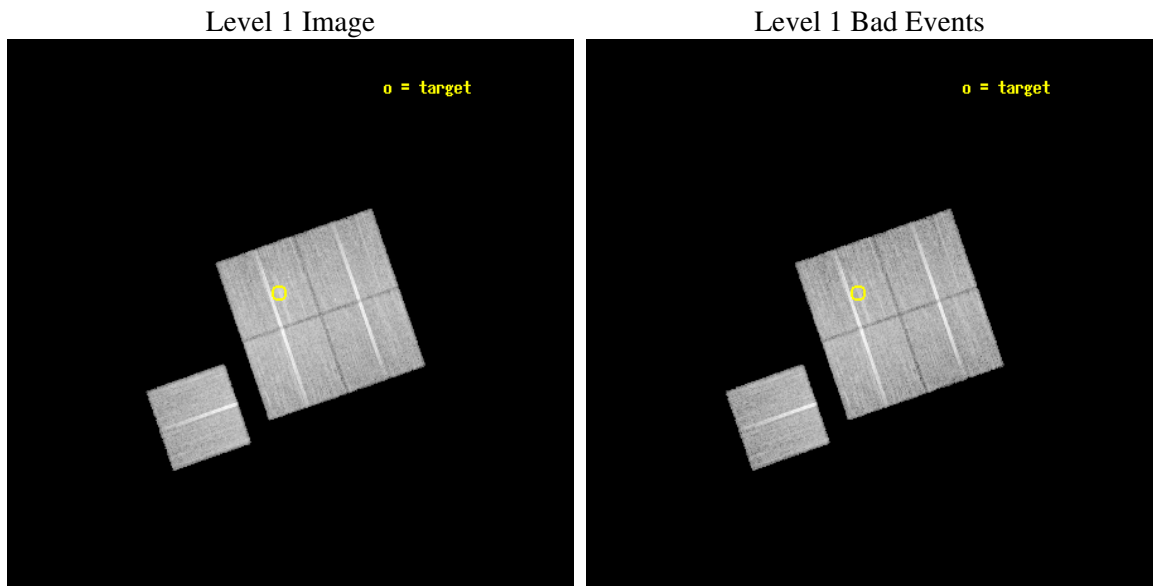
seq_num	800455
obs_id	5012
title	Cluster studies: Determination of H0/q0
observer	DR. LEON VANSPEYBROECK
object	MACS911.2+1746
dtcycle	0
cycle	P
ra_targ	137.8
dec_targ	17.775
ra_nom	137.77939776887
dec_nom	17.724349541579
roll_nom	250.92490418581
revision	2
ontime	24108.577002943
livetime	23793.580695923
ontime0	24114.8589634
ontime1	24117.999953628
ontime2	24108.577092558
ontime3	24108.577002943
ontime6	24111.718072772
l2events	60610



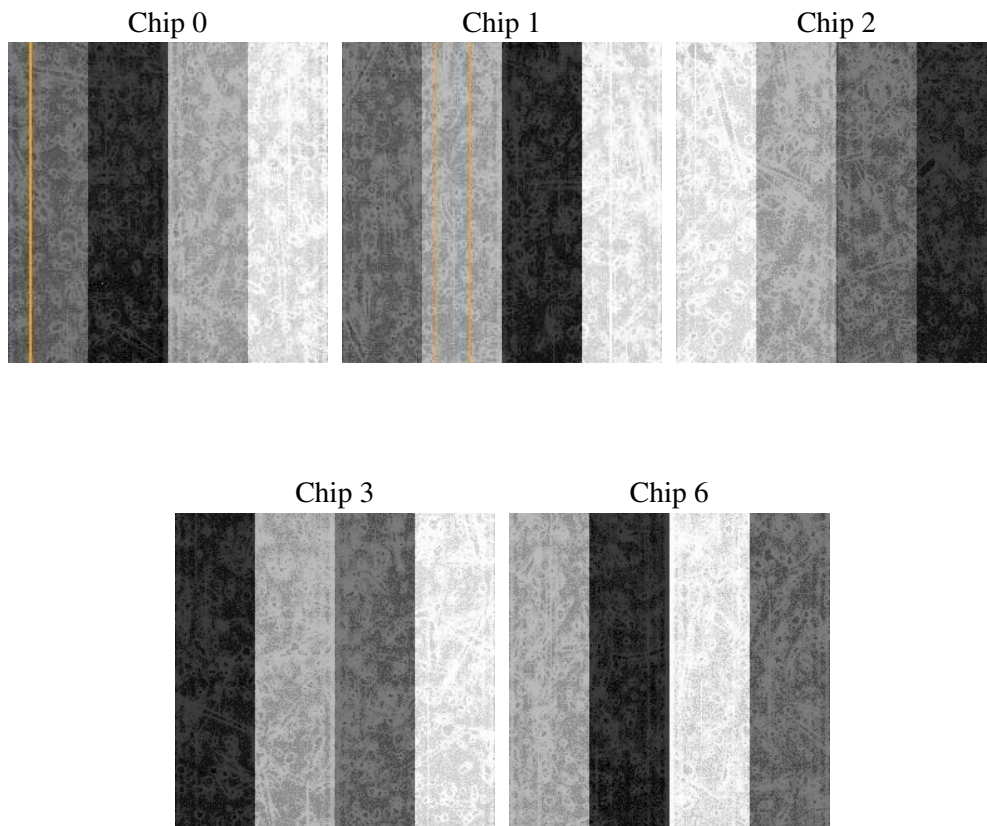
## 2 OBI

### 2.1 OBI

#### 2.1.1 Images



#### 2.1.2 Bias



### 2.1.3 Parameters

obi_num	1
ascdsver	7.6.7.2
caldbver	3.2.2
date	2006-05-31T15:01:50
revision	2

sched_exp_time	24000.000000
ontime	24113.542197526
ontime0	24119.824157983
ontime1	24122.965148211
ontime2	24113.542287141
ontime3	24113.542197526
ontime6	24116.683247447
l1events	678273

### 2.1.4 Events

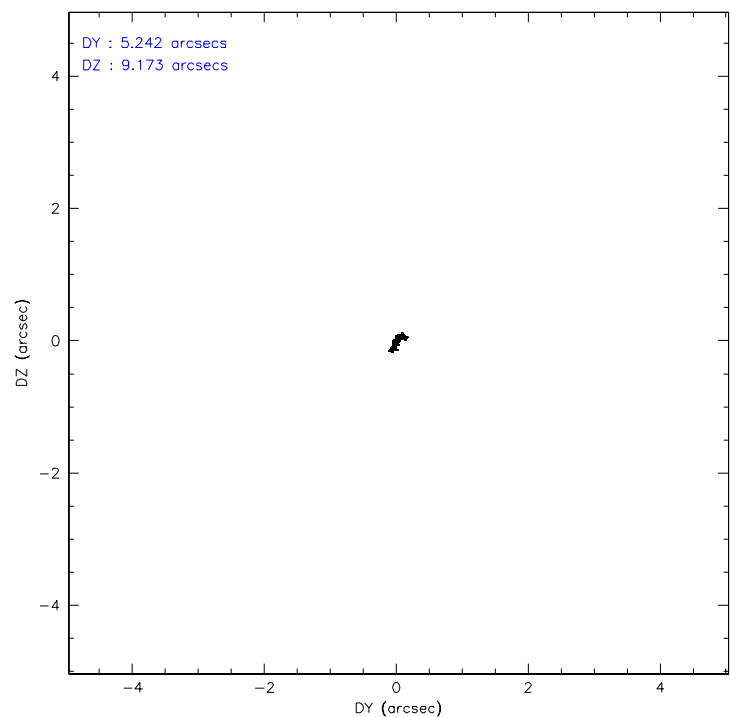
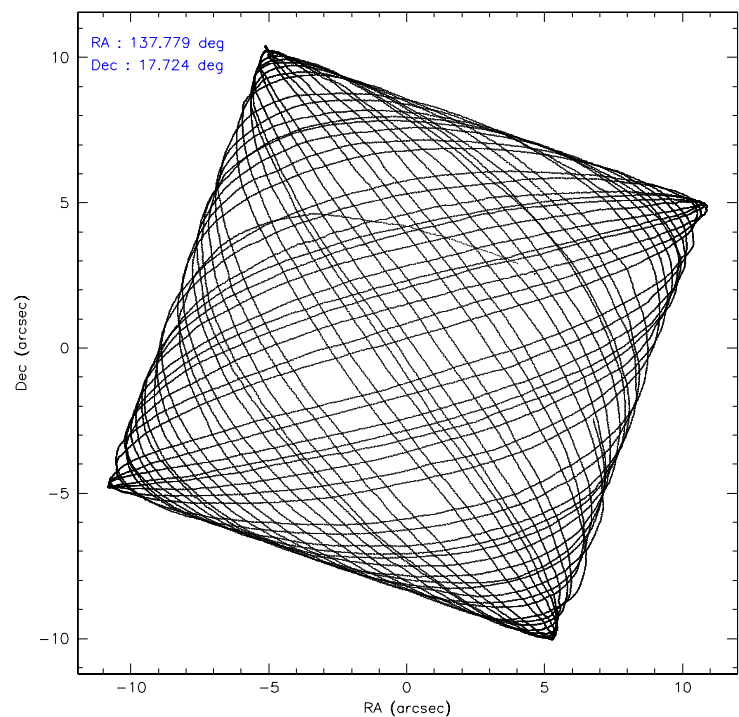
	ccd 0	ccd 1	ccd 2	ccd 3	ccd 6
level 1 events	128252	128550	146152	141259	134060
rejected events	114475	113011	132994	125203	120177
rejected %	89%	87%	90%	88%	89%

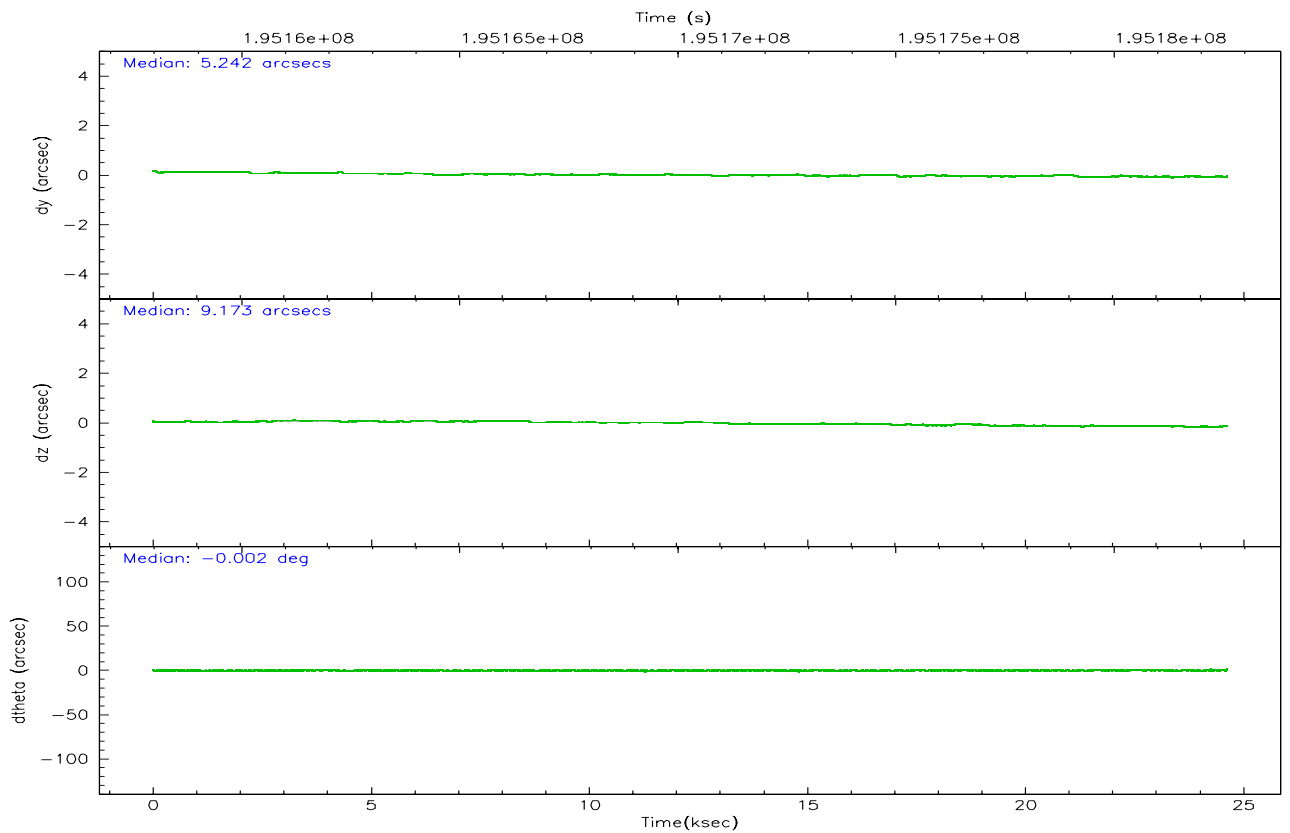
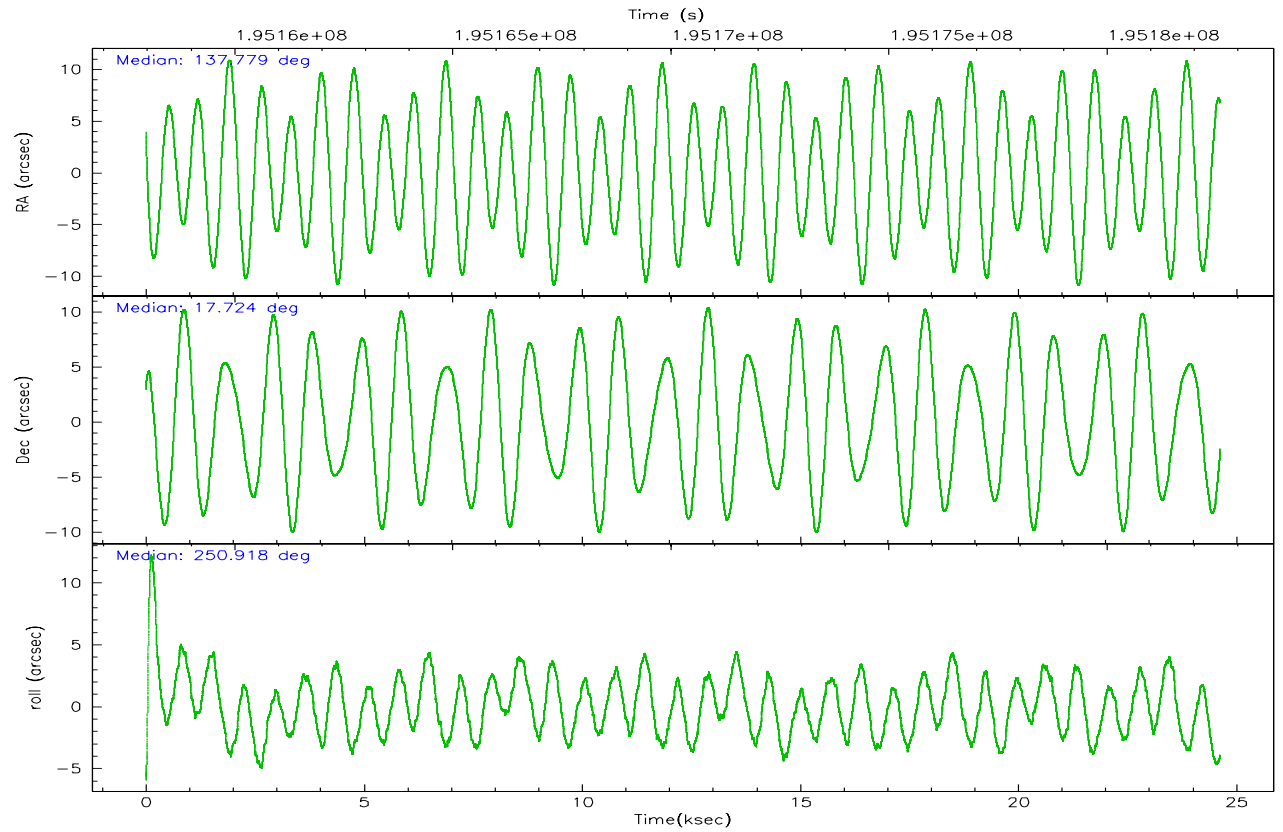
	ccd 0	ccd 1	ccd 2	ccd 3	ccd 6
grade 0 events	4731	5747	4695	7017	4695
	3%	4%	3%	4%	3%
grade 1 events	67	50	49	82	49
	0%	0%	0%	0%	0%
grade 2 events	3335	3224	3038	3058	2930
	2%	2%	2%	2%	2%
grade 3 events	1606	1704	1480	1606	1637
	1%	1%	1%	1%	1%
grade 4 events	1489	1789	1554	1652	1588
	1%	1%	1%	1%	1%
grade 5 events	4814	5242	4659	5488	5444
	3%	4%	3%	3%	4%
grade 6 events	2619	3078	2395	2727	3039
	2%	2%	1%	1%	2%
grade 7 events	109591	107716	128282	119629	114678
	85%	83%	87%	84%	85%

## 2.2 Compared Parameters

Parameter	Planned	Actual	Parameter	Planned	Actual
Instrument	ACIS	ACIS	Obspar format version number	6	6
Detector	ACIS-01236	ACIS-01236	Obspar file type	PREDICTED	ACTUAL
Grating	NONE	NONE	Obspar update status	NONE	UPDATED
Data mode	VFAINT	VFAINT	On-chip summing requested	N	N
Observation mode	POINTING	POINTING	Subarray requested	NONE	NONE
Pointing RA	137.773832	137.7793977688713	Alternating exposures requested	N	N
Pointing Dec	17.751231	17.72434954157866	Primary exposure time	0.000000	3.1
Pointing Roll	250.717915	250.9249041858064			
SIM focus pos (mm)	-0.782348	-0.7809083437167272			
SIM defocus (mm)	0	0.001439871863259334			
SIM translation stage pos (mm)	-225.840463	-225.8433433320239			
SIM translation stage offset (mm)	-7.752	-7.749109670905796			
Observation start time	195158591.184000	195157409.54124			
Observation start date	2004-03-08T18:42:07	2004-03-08T18:23:29			
Observation end time	195182591.184000	195184127.19242			
Observation end date	2004-03-09T01:22:07	2004-03-09T01:48:47			
Read mode	TIMED	TIMED			

## 2.3 Aspect





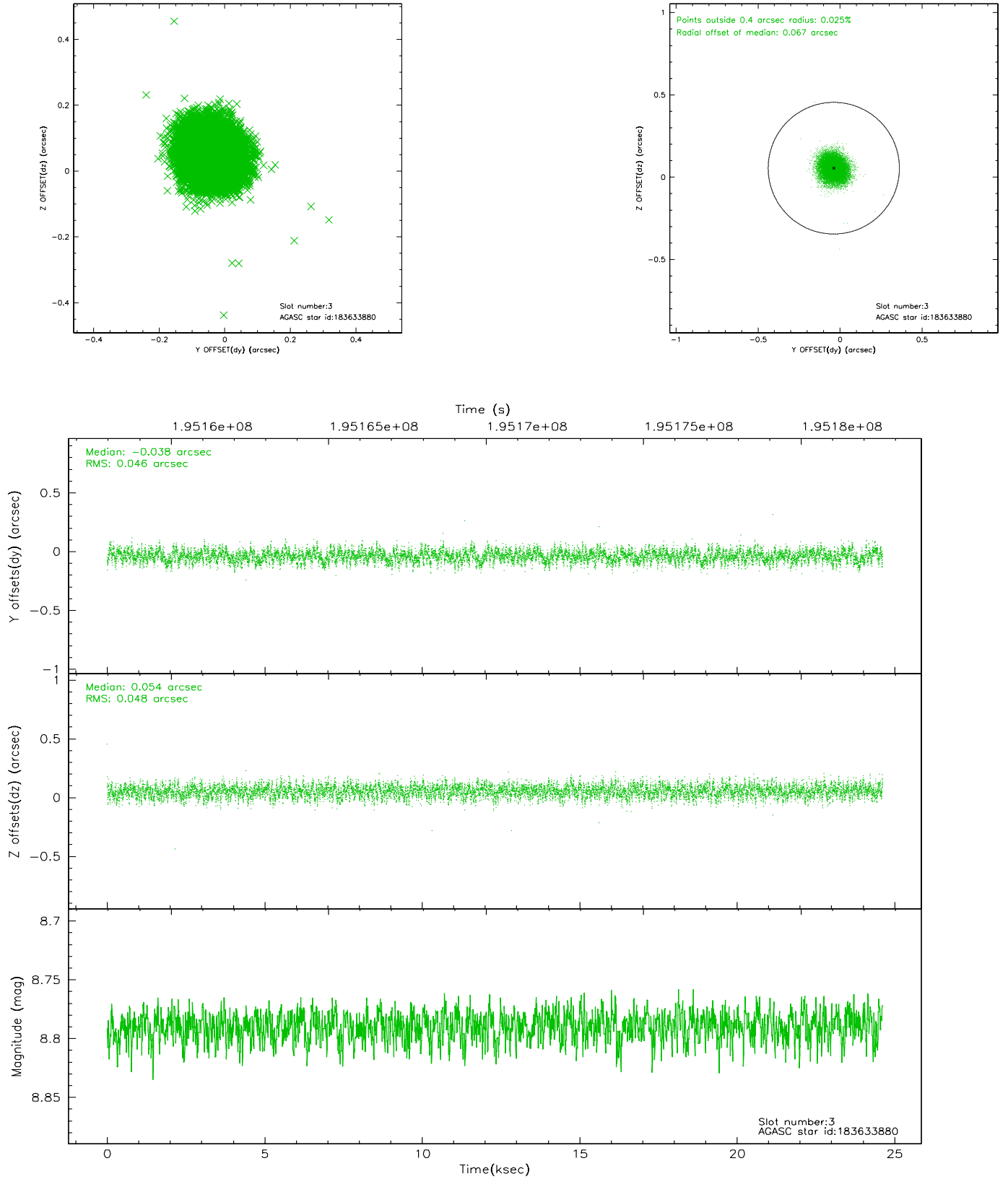
### Slot Statistics

slot	status	id	mag	n_pts	med_dy	med_dz	dr1	dr2	ra	dec	mean_y	mean_z
0	FID	ACIS-I-1	7.23	6007	0.065	-0.039	0.006	0.010	0.000000	0.000000	934.40	-991.72
1	FID	ACIS-I-5	7.22	6007	-0.222	0.063	0.006	0.010	0.000000	0.000000	-1813.93	905.78
2	FID	ACIS-I-6	7.25	6006	0.066	0.047	0.007	0.011	0.000000	0.000000	399.80	1550.42
3	GUIDE	183633880	8.79	12012	-0.038	0.054	0.072	0.114	138.226741	17.476605	418.23	1794.19
4	GUIDE	183634944	7.00	12015	-0.060	-0.068	0.056	0.086	137.259634	17.469649	1538.18	-1332.58
5	GUIDE	183636632	9.49	12000	0.173	0.139	0.111	0.184	138.222453	17.249521	1194.09	2051.93
6	GUIDE	184039496	7.31	12015	-0.190	-0.112	0.070	0.108	137.987126	18.044113	-1236.50	340.66
7	GUIDE	183635568	8.60	12005	0.113	-0.017	0.086	0.139	137.226478	17.234255	2376.26	-1162.68

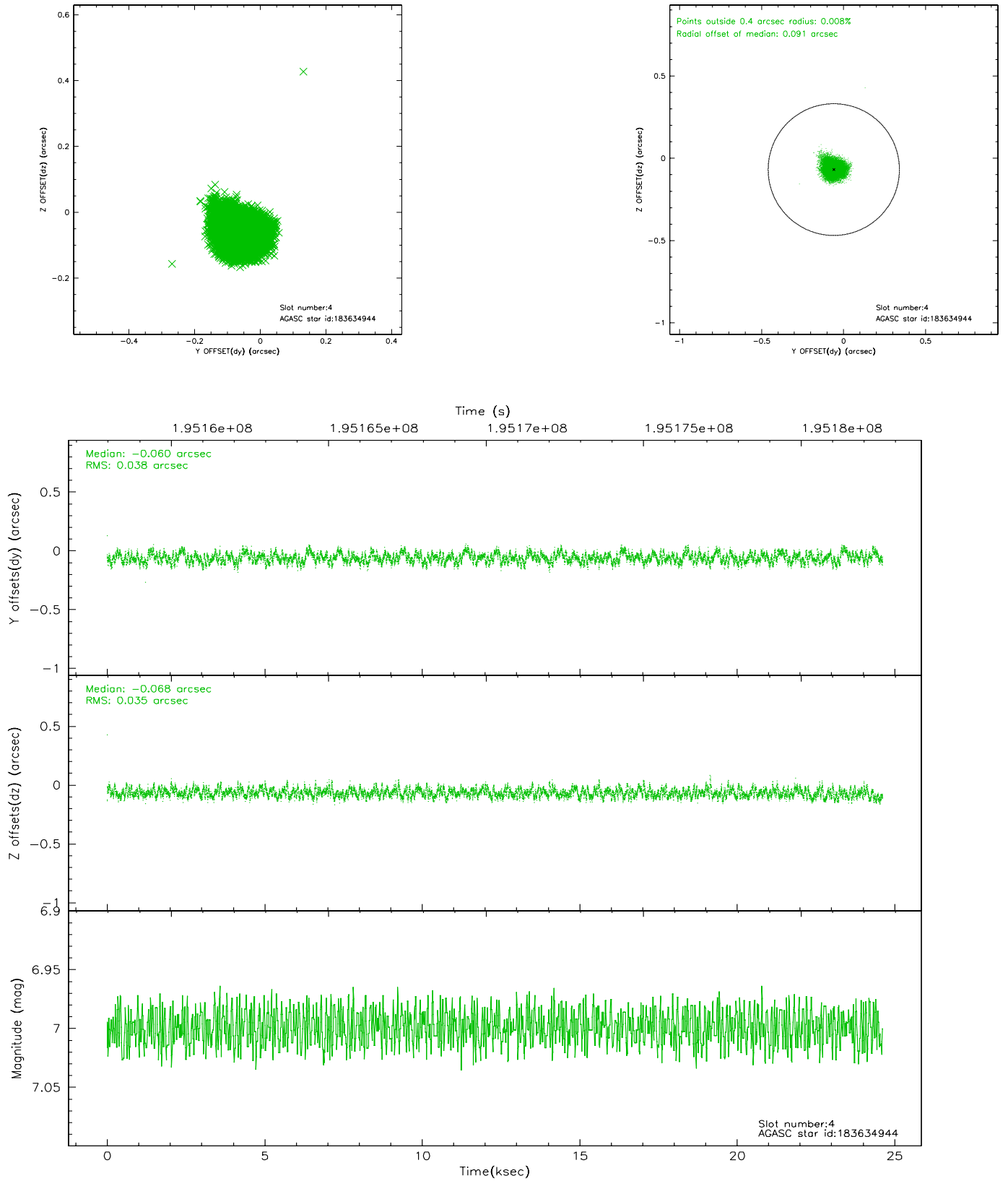


## 2.4 Star Slots

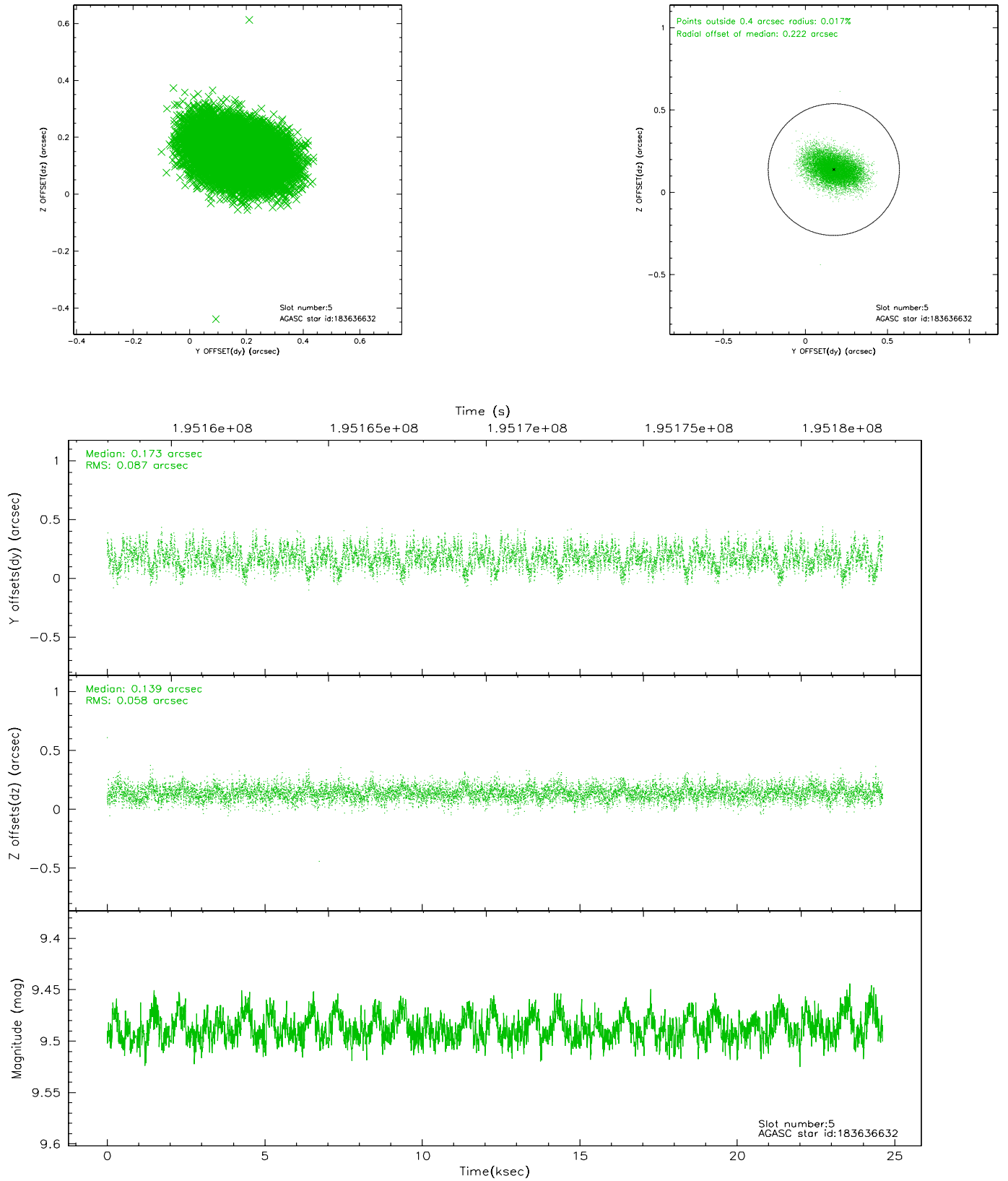
### 2.4.1 Slot 3



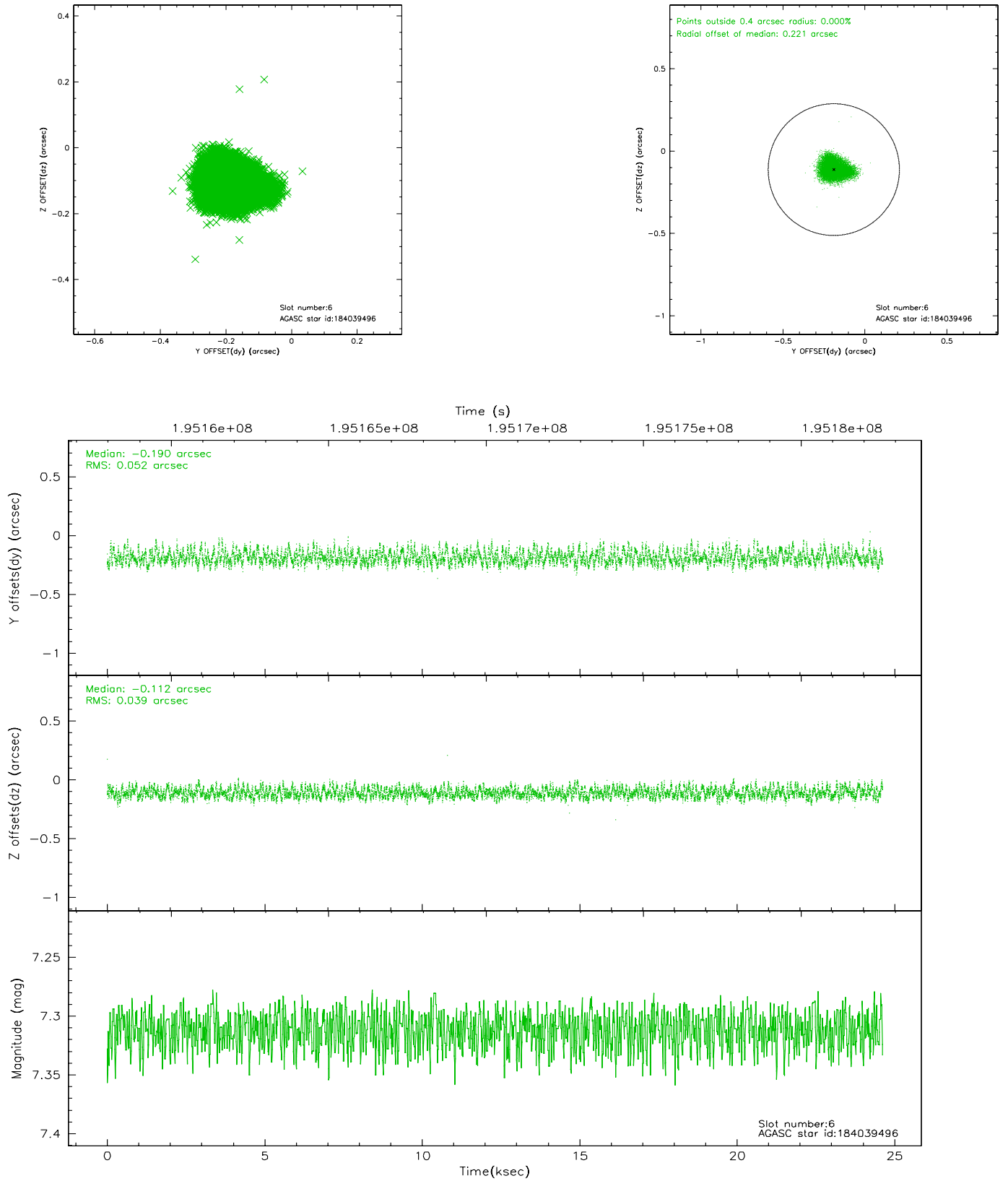
## 2.4.2 Slot 4



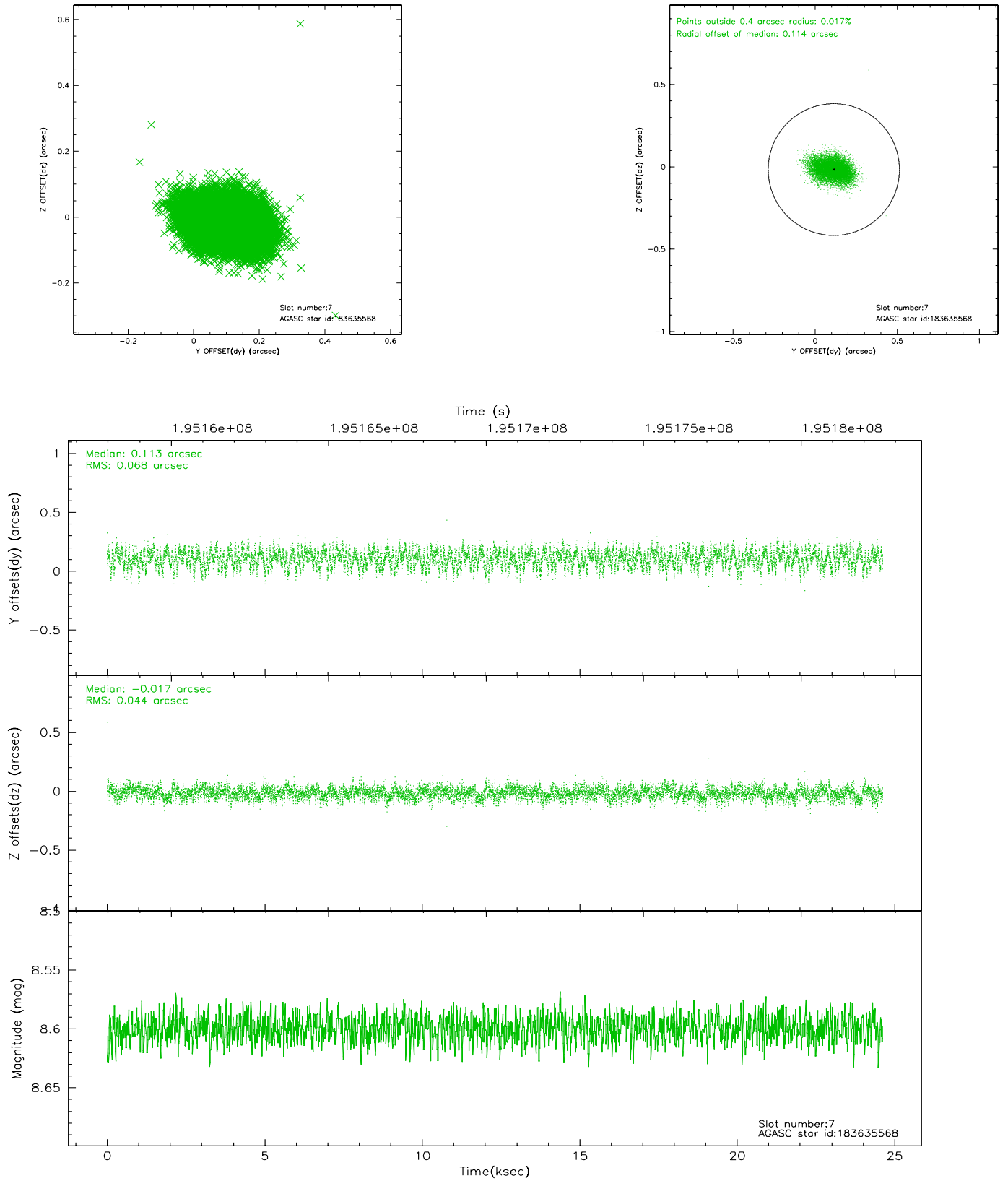
### 2.4.3 Slot 5



## 2.4.4 Slot 6

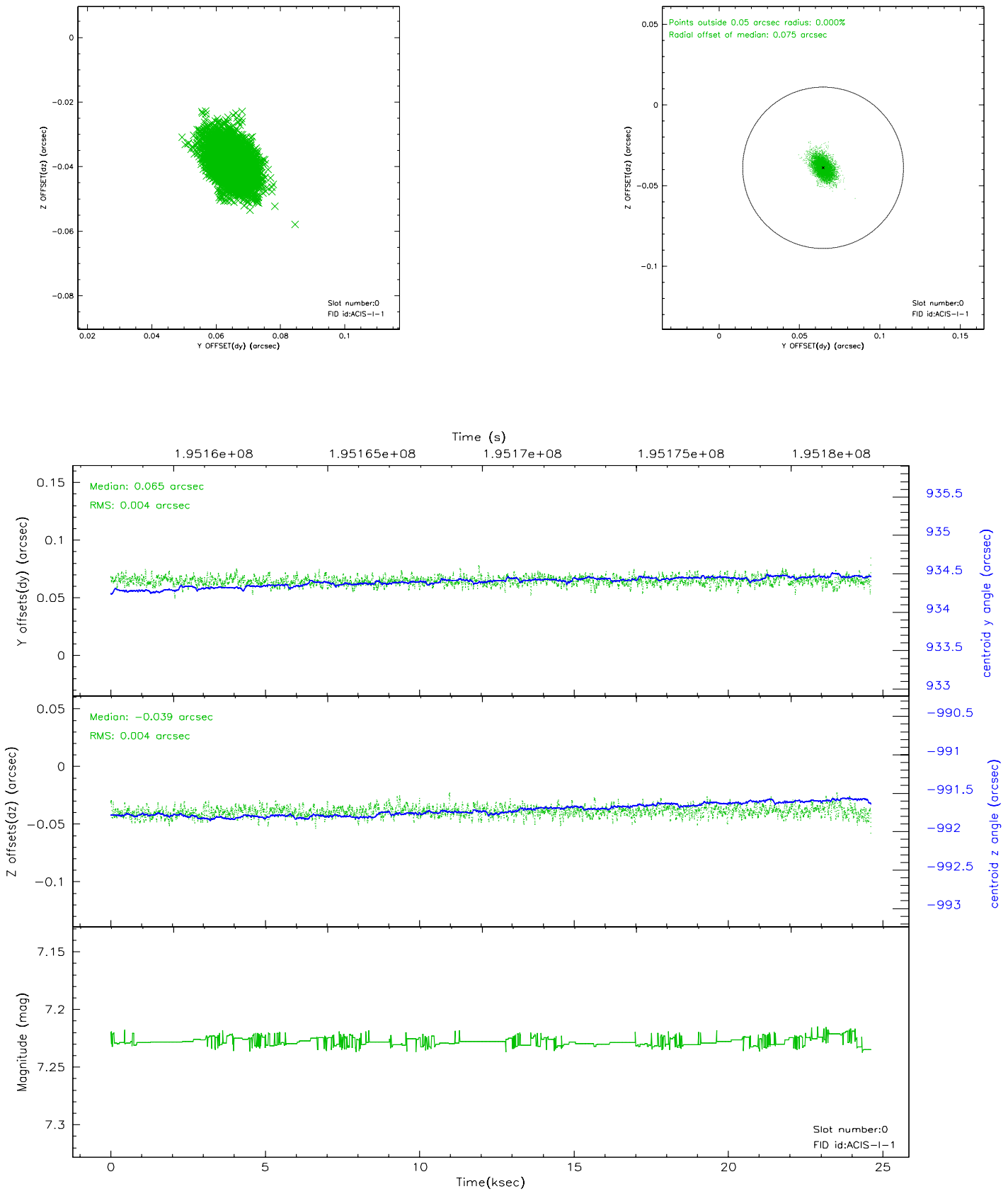


## 2.4.5 Slot 7

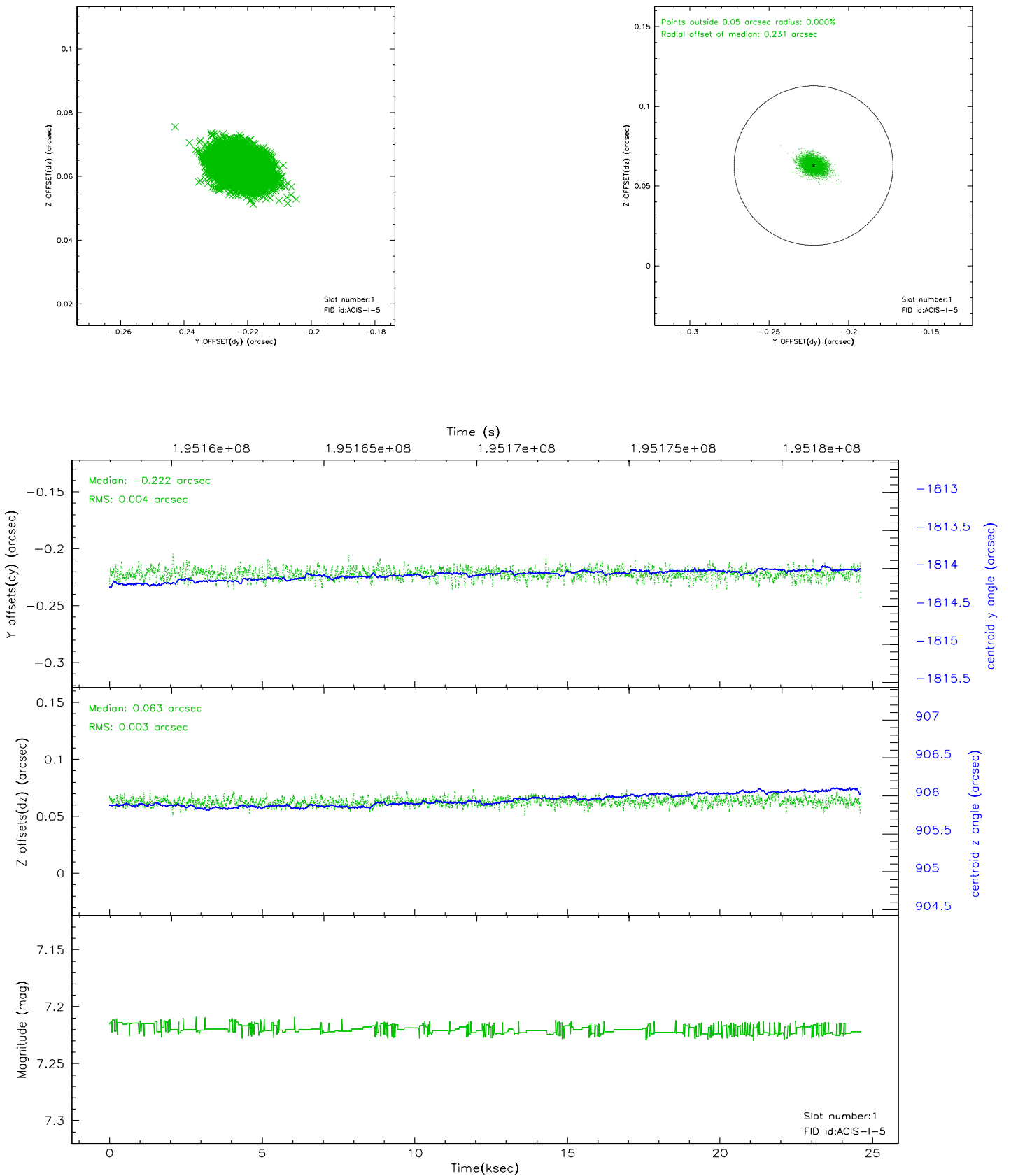


## 2.5 FID Slots

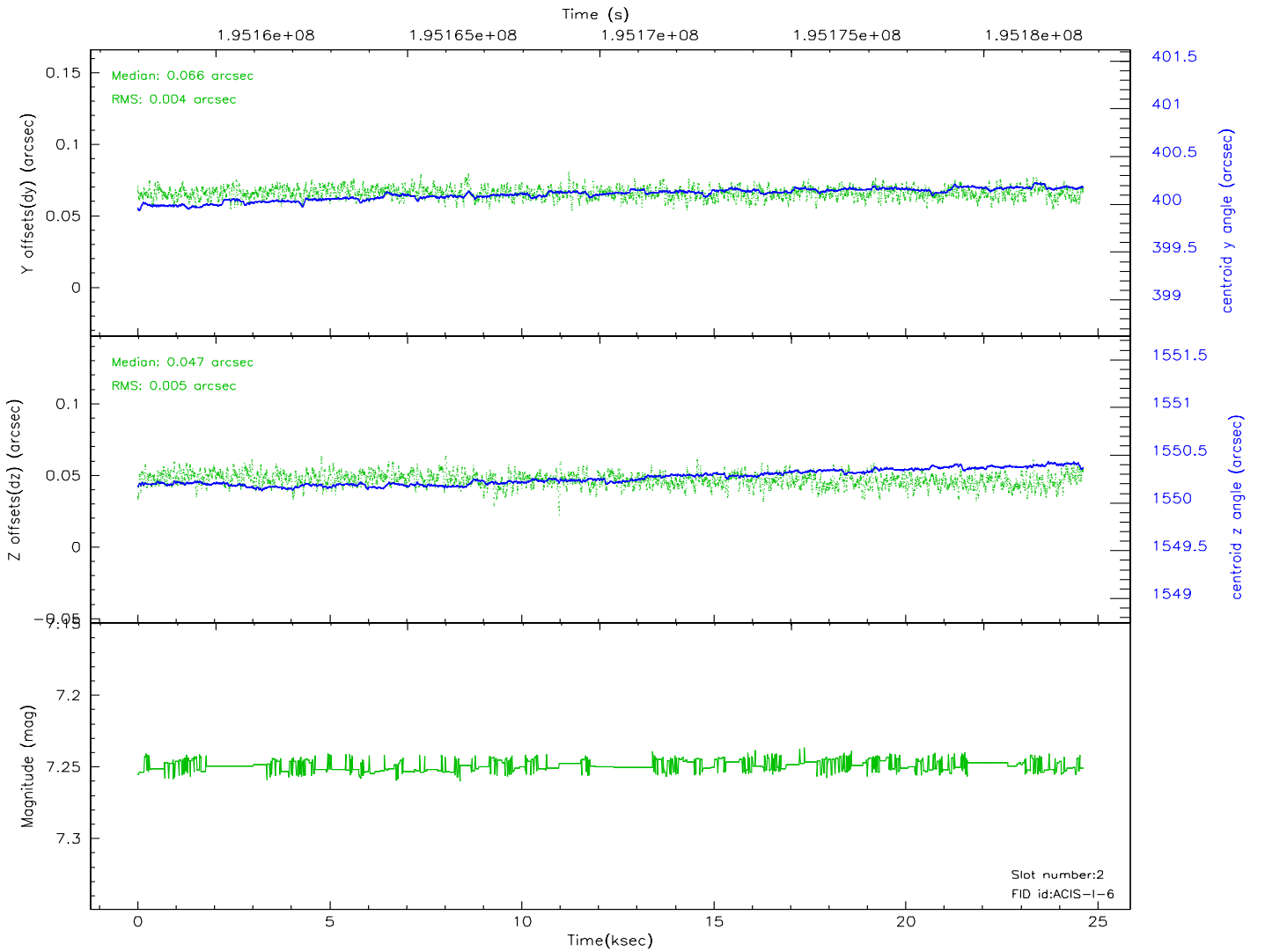
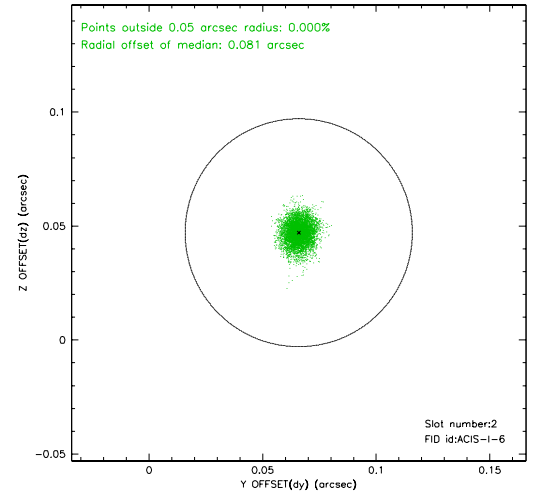
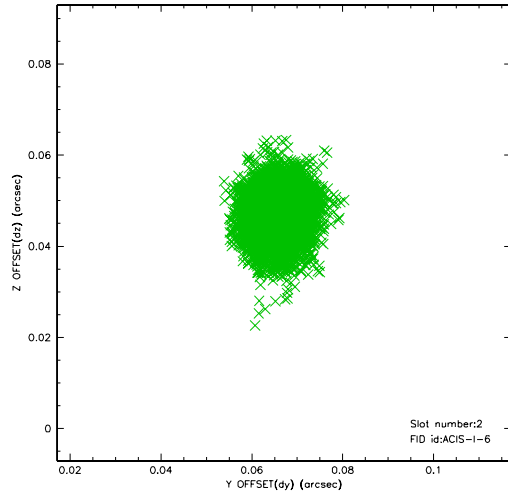
### 2.5.1 Slot 0



## 2.5.2 Slot 1

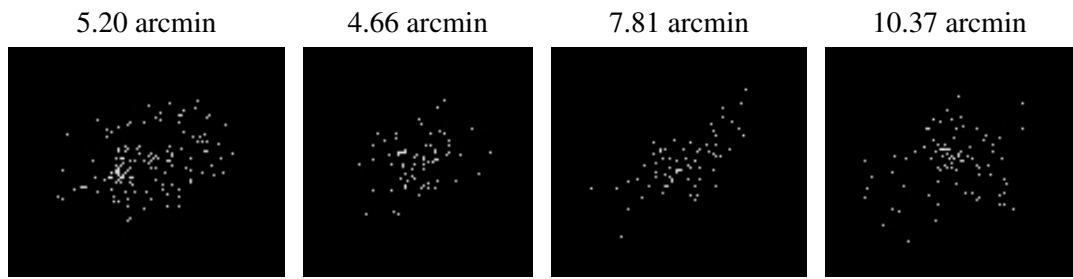


### 2.5.3 Slot 2





### 3 Point Sources



## A Summary

### A.1 Status

V&V Scientist	Jen Lauer
V&V Date (YYYY-MM-DD)	2006.05.31
V&V Edition	1
V&V Disposition and Status	OK
V&V Charge Time	24.111

### A.2 Comments